

# GV-DVR SYSTEM

## GV-1480S/1240S/1120S



- Recovery DVD in case of failure
- Operates on Windows XP Professional (Embedded Systems)
- GV-Keyboard and IR remote control included
- Latest surveillance software preinstalled and upgradeable
- User-friendly software interface
- Built-in I/O Inputs and 4 Outputs
- Available in 14 languages
- Compatible with GeoVision optional products

The GV-DVR is a 4U rackmount DVR system equipped with GeoVision's video capture card, Windows XP Pro and surveillance S/W within the robust chassis. It is well equipped with HDD of a maximum size 1600GB with 4 silent CPU cooling fans. The mighty networking enables remote access and control of the system, while Geo MPEG 4 allows superior transmission and video quality. The GV-DVR features 16 audio and video channels with max. 480 FPS (NTSC) / 400 FPS (PAL) display rate. Max. Resolutions are D1 when the GV-Hybrid DVR Card is installed. Flexible combinations of specifications and accessories are provided to meet any installation need, or even budget!

### Package

- GV-DVR unit x 1
- D-Type Video Cables x 2 (1-8 Cams Black Cable x 1, 9-16 Cams Blue Cable x 1)
- D-Type Audio Cables x 2 (1-8 Channels Red Cable x 1, 9-16 Channels Red Cable x 1)
- AC Power Cord x 1
- Self-Stick Rubber Pad x 4
- RJ-11 to DB-9 Cable x 1
- Lock Key x 2
- GV-Keyboard Package x 1
- IR Remote Control Package x 1
- Recovery DVD x 1 (S/W, Windows OS included)
- Nero Express V6.0 x 1
- GV-DVR System User's Manual x 1
- GV-DVR Quick Start Guide x 1
- Surveillance System New Feature Guide x 1
- Surveillance System Installation Guide x 1



GV-Keyboard



GV-IR Remote Control

### Models

GV-1480S	<ul style="list-style-type: none"> <li>• Sixteen-channel digital video recorder</li> <li>• Records up to 480 (NTSC) / 400 (PAL) fps at the 320 x 240 resolution</li> <li>• 900 GB / 1200 GB / 1600 GB storage</li> </ul>
GV-1240S	<ul style="list-style-type: none"> <li>• Eight-channel or Sixteen-channel digital video recorder</li> <li>• Records up to 240 (NTSC) / 200 (PAL) fps at the 320 x 240 resolution</li> <li>• 600 GB / 1200 GB / 1600 GB storage</li> </ul>
GV-1120S	<ul style="list-style-type: none"> <li>• Sixteen-channel digital video recorder</li> <li>• Records up to 120 (NTSC) / 100 (PAL) fps at the 320 x 240 resolution</li> <li>• 300 GB / 600 GB / 1200 GB storage</li> </ul>

## Front View

Front View



- |   |                             |   |                            |
|---|-----------------------------|---|----------------------------|
| 1 | 5.25" Hard Disk Compartment | 5 | Power Switch               |
| 2 | Power LED                   | 6 | Reset Button               |
| 3 | Hard Drive Activity LED     | 7 | Key Lock (2 Keys Supplied) |
| 4 | DVD (±) RW Drive            | 8 | USB Port x 2               |

## Rear View

Rear View



- |   |                   |   |               |
|---|-------------------|---|---------------|
| 1 | I/O               | 6 | RJ-11         |
| 2 | D-Type Audio Port | 7 | Ethernet Port |
| 3 | RCA TV Output     | 8 | USB Port      |
| 4 | Video Port        | 9 | PS/2 Input    |
| 5 | RS-485            |   |               |

## Specifications

Model	GV-1480S	GV-1240S	GV-1120S
Mother Board	Intel 945G Chipset		
CPU	Intel Pentium 4 3.0 GHz, 800MHz FSB		
RAM	512 MB (256MB x 2) Dual Channel		
VGA	Intel GMA 950		
DVD± RW	16 X		
Power	450 W, 110-230V, 60-50Hz		
Fan	Middle: 2 Fans, Rear: 2 Fans		
OS	Windows XP Pro Embedded		
DirectX	9.0C		

## Video

Codec	Wavelet / Mpeg-4 / Geo MPEG4 / Geo Mpeg4 (ASP) / Geo H264		
Video Input	16 Channels	8 / 16 Channels	16 Channels
Video Loop Output (Opt.)	16 Channels		
Input Level	1.0 Vp-p (± 10%) Composite , 75 Ω		
Video Standard	NTSC / PAL		
Main TV Output	1.0 Vp-p Composite		
Display Frame (Max)	NTSC: 480 FPS; PAL : 400 FPS		
Display Resolution	NTSC: D1, Half D1, CIF Resolution		
Camera Name	Max. 32 Characters		
Screen Split Control	1 x 1 / 2 x 2 / 1+ 5 / 1+ 7 / 3 x 3 / 2 + 8 / 1 + 12 / 4 x 4 / 1 + 16 / 1 + 8		
Screen Rotate Control	1 ~ 10 Sec		
Image Control	Contrast, Brightness, Saturation, Hue		

## Audio

Compression	ADPCM / G.723		
Audio Input	16 Channels	8 / 16 Channels	16 Channels
Input Level	0.5 ~ 1 Vp-p Composite		

## Display / Recording

Model	GV-1480S	GV-1240S	GV-1120S
Recording Frames (320 x 240)	480 (NTSC) / 400 (PAL)	240 (NTSC) / 200 (PAL)	120 (NTSC) / 100 (PAL)
Display Frames (Max)	480 (NTSC) / 400 (PAL)		
Image Compression	NTSC: D1, Half D1, CIF Resolution		
Dimensions	Round the clock / Motion Detection / Sensor Detection / Pre & Post Recording / Schedule Recording		
Recording Mode	96 Groups Per Day by 15 Min		
Scheduling	10 sec. / 30 sec. / 1 min. / 5 min.		
Instant Playback	1-90 Sec (1 FPS)		
Pre-Rec	Support		
Water Marking			

## Searching and Playback

Search Method	Date / Time
Date / Time / Event Search	Selectable on Tree list and Calendar
Log search	Through the log data to find the video event / time
Backup Type	DVD+R (DL) / DVD-R (DL) / DVD+R / DVD+RW / DVD-R / DVD-RW / CD-R / CD-RW

## Remote Client Software

Monitoring Environment	WebCam / Twin Server / CenterV2 / Remote Playback Server / Remote View / IP Multicast / Control Center / VSM / GView for PDA / MSView for Microsoft Smartphone / SSView for Symbian Smartphone / GView for 3G Mobile Phone
WebCam Live View	Max. 16 Channels Transmission (Max. 200 Channels Accessible)
Remote Search	WebCam's Remote Playback / Remote Playback Server

## System Monitoring and Recovery

Power Restore	Power restored after AC power loss
Monitoring	Two independent Watchdogs (Hardware + Software)
Recovery DVD	Automatic system rebuild

## Alarm

Sensor Input	Standard	4 Inputs
	GV-IO 12-In Card (Option)	16 Inputs
	GV-IO Box (Option)	8~72 Inputs
Alarm Output	Standard	4 Outputs
	GV-IO 12-Out Card (Option)	16 Inputs
	GV-IO Box (Option)	16~144 Inputs
Motion Detection	16 Channels	

## Connector

Video Input	BNC 16 Ports
Video Loop Output (Option)	BNC 16 Ports
Audio Input (mono)	RCA 16 Ports
Audio Microphone In	Mini Stereo Jack
Audio Speaker Out	Mini Stereo Jack
TV Output	RCA
PTZ Control (RS-485)	2-Pin Terminal
Ethernet	RJ-45, 10/100/1000 Mbps
USB 2.0	Front: 2 Ports, Rear: 4 Ports
VGA Output	Standard 15-Pin D Sub
Remote Access	TCP / IP

## Environment

Operating Temp.	0 ~ 50 °C (32~104 F)
Humidity	0 ~ 80% RH (non-condensing)

## Physical

Model	GV-1480S	GV-1240S	GV-1120S
IPC Case	4U Rackmount		
Color	Silver		
Weight	18.2 Kg	17.6 Kg	17 Kg
	18.8 Kg	18.8 Kg	17.6 Kg
	18.8 Kg	18.8 Kg	18.8 Kg
Dimensions (W x H x D)	483 x 178 x 528 (mm); 19 x 7 x 21 (inch)		

## Warranty

1 Year

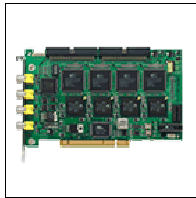
## PTZ Support

	PTZ Manufacturer & Model	GV-System PTZ Option
1	Ademco (Juptier)	Ademco (Juptier)
2	Bosch (TC700/8560)	Bosch (TC700/8560)
3	Canon VC-C3	VCC3
4	Canon VC-C4	VCC4
5	CBC GANZ (ZC-S120 Series)	CBC GANZ (ZC-S120 Series)
6	Chiper (V9KRV)	Chiper (V9KRV)
7	D-Max Version Protocol	D-Max Dome
8	DiGi Dome (DOH-240)	DongYang Dome (DOH-240) / D-Max Dome
9	Direct Perception (PTU-D46)	Direct Perception (PTU Series)
10	DynaColor D-7720	DynaColor (D-7720/D7722) / DynaColor Dome
11	DynaColor D-7722	DynaColor Dome
12	DynaColor Version Protocol	DynaColor Dome
13	Elbex (Matrix/1000)	ELBEX (Matrix/1000)
14	Elitar (EL-PT830)	Pelco Dome
15	GKB (SPD-221)	GKB (SPD-221)
16	Hi-Sharp (HS-CC600)	Pelco Dome
17	JEC Version Protocol	JEC Dome
18	JEC (ETXK8000)	Pelco Dome / JEC Dome
19	JVC (TK-S576B/S655)	JVC (TK-S5768B/S655)
20	Kalatel Cyber Dome with KTD-312	Kalatel Cyber Dome
21	Kampro 230X CCd Zoom Camera (GE Security)	Pelco Dome

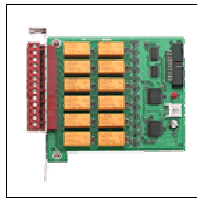
22	Kampro Technology (K-ZC23)	Kampro Technology (K-ZC23)
23	Kenko (DMP23-H1)	Kenko (DMP23-H1)
24	LiLin PIH-7000 (17X)	Lilin (PIH)
25	LiLin PIH-7600 (22X)	Lilin (PIH)
26	LiLin PIH-7600PL	Lilin (PIH)
27	LiLin PIH-7625 (25X)	Lilin (PIH)
28	MESSOA (SDS600 Series)	MESSOS (SDS600 Series)
29	Minking Version Protocol	Minking Dome
30	Mintron (54G2AHN/P)	Mintron (54G2SHN/P)
31	MZC (IR6018DN)	Pelco Dome
32	Panasonic WV-CS850	Panasonic (WV-CS850)
33	Panasonic WV-CS854	Panasonic (WV-CS850)
34	PTZ in I/O	PTZ in I/O
35	Pelco/P-version Protocol	Pelco Dome
36	Pelco/D-version Protocol	Pelco Dome
37	Pelco (Spectra III)	Pelco (Spectra III)
38	SAE (DR-E588)	SAE (DR-E588)
39	Samsung (SPD-1600)	Samsung (SPD-1600)
40	Samsung (SCC-641)	Samsung (SCC-641/643)
41	Samsung (SCC-643)	Samsung (SCC-641/643)
42	Sensormatic (Ultra IV)	Sensormatic (Ultra IV)
43	Sony EVI-D100	Sony (EVI-D100)
44	Sony EVI-D100T	Sony (EVI-D100)
45	TOA (CC551)	TOA (CC551)
46	YAAN Version Protocol	YAAN Dome
47	Yoko (YK-2E00)	Pelco Dome

**Note:** This list is limited for the original models from the company mentioned above. Any third-party camera models, even claiming of the same protocol compatibility, may or may not work properly with GV-System. GeoVision takes no responsibility of such incompatibility.

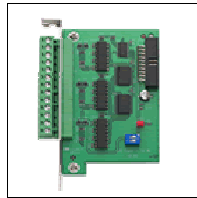
## Optional Product



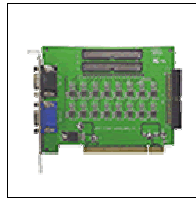
GV-Hybrid DVR Card



GV-IO 12-out Card



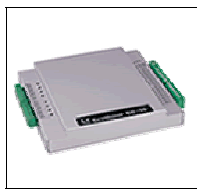
GV-IO 12-in Card



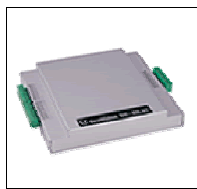
GV-Loop Through Card



GV-COM



GV-IO



GV-RELAY



GV-Data Capture

## Language

English / Arabic / French / Germany / Hebrew / Hungarian / Japanese / Polish / Portuguese (Brazil) / Russian / Spanish / Simplified Chinese / Traditional Chinese

## Ordering Information

Model	Camera Input	HDD	Hybrid DVR Card	Input / Output	
GV	1480S	16	900 GB / 1200 GB / 1600 GB	N/A	4 in / out
	1240S	8	600 GB / 1200 GB / 1600 GB	N/A	4 in / out
		16	600 GB / 1200 GB / 1600 GB	N/A	4 in / out
	1120S	16	300 GB / 600 GB / 1200 GB	N/A	4 in / out

### Note:

\* All specifications are subjected to change without notice.

\* All brand names are registered trademarks referred are the properties to their respective owners.