



<http://www.yachtworld.com/anchoryachtsalesofflorida>

Anchor Yacht Sales International Inc. - Ed
Chapdelaine
3541 W State Rd 84 , on Marina Mile
Fort Lauderdale, FL 33312, United States

Toll-free: 888-221-1320
Tel: 954-646-1609
Tel: (954) 797-0030
Ed@QualityYachtsforsale.com



2007 Hampton 630 PH

Hampton Yachts 630PH(freshwater)– Lovely Lady

- Year: 2007
- Price: \$ 1,275,000
- Location: Erie, PA, United States
- Hull Material: Fiberglass
- Fuel Type: Diesel
- YachtWorld ID: 2687146
- Condition: Used

2007 Hampton Yachts 630 Pilothouse Motoryacht with 800HP Caterpillar C-15 ACERT motors (850 hours). **One knowledgeable owner. Freshwater-only and stored inside/heated since new.** Equipped with stabilizers, bow & stern thrusters, a comprehensive Raymarine electronics package, and 13kw & 20kw generators.

Many custom features including:

- Hard aft door to bridge
- Stainless steel ladder to access flying bridge hardtop
- Folding stainless steel ladder to access PH hardtop
- Fresh & saltwater washdowns on bridge deck & foredeck

Please see the specifications and photos for complete information about this fine Hampton 630PH.

This yacht can be delivered to the Great Lakes or to East Coast ports via the historic Erie Canal and Hudson River.

This is a US Documented vessel home-ported in Erie, PA. It can be shown by appointment.

Dimensions

Cruising Speed: 18.5 kn

Cruising Speed RPM: 2030

Max Speed: 23 kn

Max Speed RPM: 2340
Beam: 18 ft
Dry Weight: 75000 lb
Electrical Circuit: 220V
Number of Cabins: 3

LOA: 63 ft 8 in
Max Bridge Clearance: 20 ft
Trim Tabs: Yes
Number of single berths: 2
Number of Heads: 2

Length on Deck: 62 ft 10 in
Max Draft: 4 ft 10 in
Windlass: Electric Windlass
Number of double berths: 2

Engines

Engine #1

Engine Make: Caterpillar
Drive Type: Direct Drive
Hours: 850

Engine Model: C-15 ACERT
Location: Port
Power: 800 hp

Primary Engines: Inboard
Engine Year: 2007
Propeller Type: 4 Blade

Engine #2

Engine Make: Caterpillar
Drive Type: Direct Drive
Hours: 850

Engine Model: C-15 ACERT
Location: Starboard
Power: 800 hp

Primary Engines: Inboard
Engine Year: 2007
Propeller Type: 4 Blade

Tankage

Fuel Tanks Capacity: 1500
gal

Fresh Water Tanks
Capacity: 300 gal

Holding Tank Capacity: 100
gal

Key Features

- One owner yacht
- Freshwater Great Lakes yacht, stored inside, heated winters
- Bow & Stern Thrusters
- 1000 lb. Davit
- Hardtop with Strataglass enclosure
- Hard aft bridge door
- Air-conditioned bridge
- Comprehensive Raymarine electronics package
- 1500 gallon fuel capacity
- Custom ladders to access PH and bridge hardtops

Electronics

Electronics (Bridge)

- Raymarine ST 60 Graphic Displays (depth/speed/temp/GPS)
- Raymarine ST60 for wind direction & speed

Four Raymarine E120s for dedicated full screen display:

- Raymarine E120 Radar/Raychart display with DSM 300 Module
- Raymarine E120 for Sirius weather
- Raymarine E120 for depth and camera display
- Raymarine E120W for chart display

- Raymarine “Pathfinder” 72 Mile, 48” open array radar scanner-4kw
- Raymarine ST8001 Autopilot with Remote Control
- Raymarine Ray 240 VHF radio with handset, cradle, speaker & foghorn/hailer
- Raymarine VHF 48 Radio (redundant)
- Jabsco Searchlight Remote Control
- Azimuth 1000 Digital Compass

Electronics (Pilothouse)

- Raymarine ST 60 Graphic Displays (Depth/Speed/Temp/GPS)
- Raymarine E120 Radar/Raychart Display with DSM 300 Module
- Raymarine E120 chart plotter/ depth sounder with DSM 300 and GPS completely independent of existing nav system. Has its own power switch.
- Raymarine ST8001 Autopilot with Remote Control
- Raymarine Ray 240 VHF radio with handset, cradle, speaker & foghorn/hailer
- Jabsco Searchlight Remote Control
- Azimuth 1000 Digital Compass

TV Cameras

- Remote TV Cameras with imaging of engine room, aft deck and port and starboard side deck areas

Television

- Trackvision C3 Satellite TV with 2 Channels. Digital TV antenna for local stations

Salon LCD TV displays information from Raymarine navigation systems and remote cameras.

Detailed Specifications

Hull, Superstructure, and Deck

- Hand-laid solid fiberglass hull molded in one piece
- Vinylester resin for first 3 layers of hull lay-up
- Hand-laid fiberglass deck, deckhouse, and flybridge, cored with high strength Divinycell foam.
- Hull/deck joint through-bolted every 6”, sealed with 3M 5200 sealant, and glass over with 3 layers of fiberglass
- Longitudinal and transverse stringer system
- Molded F.R.P. rub rails capped with solid stainless steel trim rails
- Molded non-skid F.R.P. decks
- Interior structural components all properly bonded to the hull
- Additional cleats for stern lines

Flybridge

- F.R.P. molded helm console
- Two Stidd helm chairs
- Stairway from cockpit to flybridge
- Complete engine instrumentation
- Hydraulic power steering (dual hydraulic pumps)
- Hydraulic engine controls
- Custom Edson wheel
- Cabinet with 7-8" drawers and storage below, wired for future refrigerator installation
- Chart cabinet on starboard side of dash for easy access
- Flybridge seating with storage
- Flybridge wet bar with sink
- F.R.P. hardtop and radar arch
- Flybridge F.R.P. table with folding extension
- Plexiglass venturi with stainless steel frame
- Air horn
- Search light
- Fresh/sea water washdown faucet
- Floodlights (2) for aft bridge area
- Switches for bridge overhead and courtesy lights

Cockpit

- Third station hydraulic engine controls (Transmission only) with bow & stern thruster controls
- Cockpit hatch with electric lifter
- Transom doors
- Enlarged transom storage area
- Stainless steel swim ladder
- Hot and cold shower unit
- Swim platform safety rails

Interior Finish

- Cherry wood (Makore) interior
- High gloss
- Burl wood inlay in selected areas
- Burl wood table top and counter top in selected areas
- Burl wood inlays in lower deck doors

- Carpet and pad throughout the yacht
- Removable padded soft vinyl headliners throughout
- Halogen lights throughout
- Rope lighting in selected areas
- Push/Release type latches for cabinets and drawers
- Hunter Douglas mini blinds in salon and galley

Pilothouse

- Stainless steel aircraft style pilothouse doors at port and starboard side
- Stidd helm chair with stainless steel pedestal
- Hydraulic engine controls
- Hydraulic power steering (dual hydraulic pumps)
- Frameless windows in pilothouse (S/S)
- Hardwood floor
- Custom steering wheel
- 10-CD stereo system with speakers for salon, pilothouse, and flybridge
- Water and fuel tank gauges
- Compass
- 3 windshield wipers with washers
- Complete engine instrumentation
- Interior stairway with stainless steel hatch leading to flybridge
- Built in dinette settee
- Large dinette table with granite table top and 8 inch extension leaf
- Storage cabinets

Salon

- Hidden Sharp 37" LCD TV with movable (electric powered) lift & cherry cover panel in port side cabinet
- Decorative burl columns on forward bulkhead with lighted area for artwork
- Electrical (110V) outlet for picture light
- Bose surround sound system
- Two port side free-standing chairs with TV cabinet
- Starboard side upholstered L-shaped settee
- Starboard side table with burl top
- Salon overhead decorative redwood burl ceiling treatment
- Stainless steel aft sliding door
- Frameless windows in salon (S/S)
- Cabinet for entertainment system
- Danby DWC-282BL-30 bottle dual-zone wine cooler

Galley

- Granite counter top with large dual sinks
- GE Reformatory model PSH23 refrigerator-built-in, side by side, wood clad, with ice maker
- GE Profile 968BFBB range (black)
- GE Profile JVM1490BH microwave with vent (black)
- Trash compactor with integrated wood panel
- Fisher Paykel DS6031 single drawer dishwasher with integrated wood panel, drawer below
- Grohe single lever faucet
- Galley exhaust blower
- Corian floor
- Overhead variable intensity halogen lights
- GFI outlets

Owners Stateroom

- Queen size bed with storage under
- Overhead decorative redwood burl ceiling treatment
- Built in Sharp 20" LCD TV
- Am/Fm radio, DVD/CD player, and surround sound system (12 volt system)
- Cedar lined hanging lockers
- Bureau and vanity cabinet
- Decorative sliding Japanese Shoji privacy screens
- Halogen overhead lighting with dimmer controls
- Opening S/S port lights
- Rope lighting

Owners Head

- Stall shower with Corian base
- ITT Quiet Flush toilet
- Grohe faucets
- Corian counter top
- Corian floor
- Halogen overhead lighting
- GFI outlet
- Exhaust fan
- Opening S/S port lights

Forward VIP Stateroom

- Island queen size berth with hinged top with storage under

- Decorative sliding Japanese Shoji privacy screens
- Cedar lined hanging locker
- Built in Sharp 20" LCD TV
- AM/FM Radio and DVD/CD player (12 volt system)
- Halogen overhead lighting with dimmer control
- Opening S/S port lights

Forward VIP Head

- FRP stall shower with Corian base
- "Tecma" silent flush toilet or "ITT Quiet Flush" toilet
- Grohe faucets
- Corian counter top
- Corian floor
- Halogen overhead lighting
- GFI outlet
- Exhaust fan
- Opening S/S port lights

Mid Guest Stateroom/Office

- Sofa that converts to upper and lower bunks (Pullman)
- Desk with two 8.5 x 11 in. file drawers on the right side of the desk, and storage areas above the desk for books, envelopes and file folders.
- Cedar lined hanging locker
- Halogen overhead lighting with dimmer control
- Opening S/S port lights
- Electrical outlet for desk lamp
- AM/FM Radio and DVD/CD player (12 volt system)

Engine Room

- Twin 800HP Caterpillar C-15 ACERT
- Under water exhaust system with bypass to transom
- Dripless packing gland
- Engine room lead foam sound insulation
- Engine room bulkhead insulated with extra sound insulation
- Engine room blowers
- Aquamet #22 stainless steel shafts and precision propellers
- Stainless steel water tanks

- Racor Dual 1000FG fuel filters for each engine
- S/S rudders and rudder posts
- FRP fuel tanks
- Color coded copper fuel lines
- Color coded copper water lines
- Color coded hydraulic fluid lines
- Pressured fresh water system
- Seacocks and sea strainers on engine raw water intakes
- Automatic bilge pumps
- One hand bilge pump
- (2) 20 gallon water heater with heat exchanger
- FRP diamond plate floors
- Holding tank with macerator pump plumbed for deck side or overboard discharge
- Engine room AC and DC lights
- Engine oil changing system
- Engine shut down
- Engine room fire extinguisher
- High water bilge alarm
- Work bench
- Fresh water outlet
- White PU painted bilge
- 12V lighting in forward bilge area

Electrical System

- Complete AC/DC breaker/distribution panel
- Kohler 20 KW/60 HZ generator with sound shield
- Kohler 13.5 KW/60 HZ generator with sound shield
- Trace SW series inverter charger, 4000 watt, 24 volt (SW4024MC2)
- 75' Cable Master
- 3 x 50 Amp battery charger
- 2nd 50 Amp shore power service and connector
- Battery selection switch
- Shore power selection switch
- Six 200 Amp heavy duty marine batteries w/box for house system
- Two 200 Amp heavy duty marine batteries w/box for engine starting
- Two 200 Amp heavy duty marine batteries w/box for windlass and bow thruster
- One 120 Amp heavy duty marine battery w/box for generator starting
- Quality AC and DC lighting throughout
- 120V outlets throughout
- Navigation lights
- Bonded electrical system

- Color coded wiring system

General Equipment and Other Features

- Wesmar RS600 stabilizer system
- Reverse cycle air conditioning system for whole boat (2X16K BTU for salon, 24K BTU for pilothouse, 12K BTU for Master S/R, 9K BTU for fwd VIP S/R, and 7k BTU for mid guest S/R, 2X16K BTU for bridge)
- Chilled water air-conditioning
- Side Power 15.7 HP bow thruster
- Maxwell VWC 3500 lbs windlass with 3 station controls
- 80 lbs C.Q.R. anchor and 275' anchor chain
- Ship indicator panel for pilothouse and flybridge
- Washer / Dryer stack combo
- Central vacuum system
- Seven station intercom system
- Hynautic Hydraulic Trim tabs
- Deck wash down at fwd, aft, and bridge decks (raw and fresh water)
- Dockside water pressure connection
- #316 grade stainless steel for mooring cleats, chocks, anchor roller, handrails, and stanchions
- TV, phone, and water inlets
- Stainless steel portholes
- Coast Guard safety package

Optional Equipment Included

- Upgrade to twin 800HP Caterpillar C-15 ACERT engines
- Chilled water air-conditioning
- Flybridge hardtop with three ventilation hatches
- Side Power 15.7 HP stern thruster
- Low profile 1000 lb. electric davit
- Canvas package
- Teak decks in cockpit, and on swim platform and stairs
- Corian table in cockpit

Disclaimer

The Company offers the details of this vessel in good faith but cannot guarantee or warrant the accuracy of this information nor warrant the condition of the vessel. A buyer should instruct his agents,

or his surveyors, to investigate such details as the buyer desires validated. This vessel is offered subject to prior sale, price change, or withdrawal without notice.



2007 Hampton 630 PH



Starboard side deck



Starboard bow deck



Starboard bow storage with fresh & seawater washdowns



Fresh & seawater washdowns



Foredeck



Custom ladder to PH hardtop (stowed)



Forward hatch



Port bow deck



Port bow storage



Custom ladder to PH hardtop (up)



Bow pulpit and windlass



Bow pulpit and windlass II



Aft deck seating



Aft deck seating II



Aft deck control station



Frameless windows



Platform with rails



Platform with rails II



Platform with rails III



Aft deck seating (covered)



Teak deck



Bow



Pulpit & stainless steel anchor



Upper helm



Upper helm seating



Hardtop hatches (3)



Clear Strataglass



Stidd seating



Chart storage



Chart storage II



Wet bar



Wet bar II



Wet bar III



Bridge settee (table folded)



Bridge settee (table open)



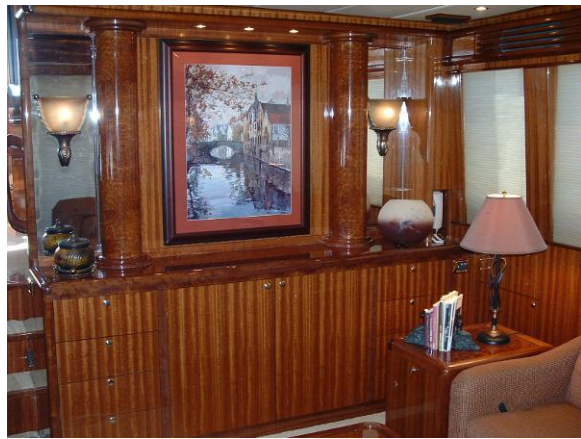
Rear door to bridge



Custom ladder to flying bridge hardtop



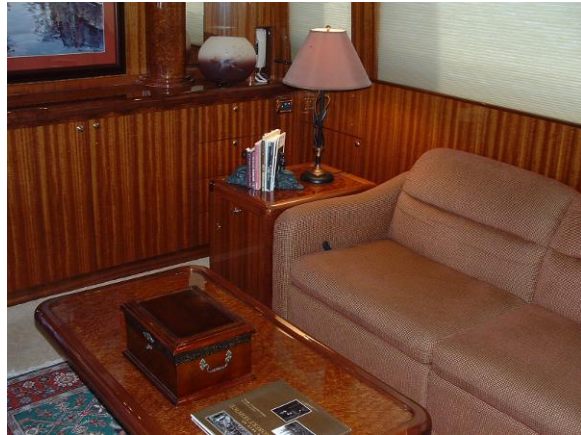
Fresh & seawater washdowns



Salon forward



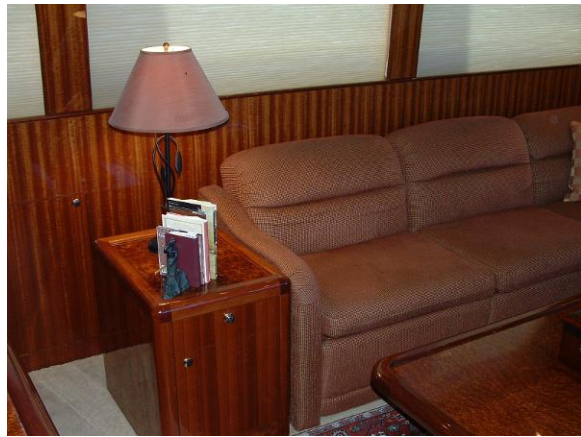
Salon forward II



Salon sofa, end table, and coffee table



Salon coffee table



Salon sofa and end table



Salon sofa



Rope accent lighting



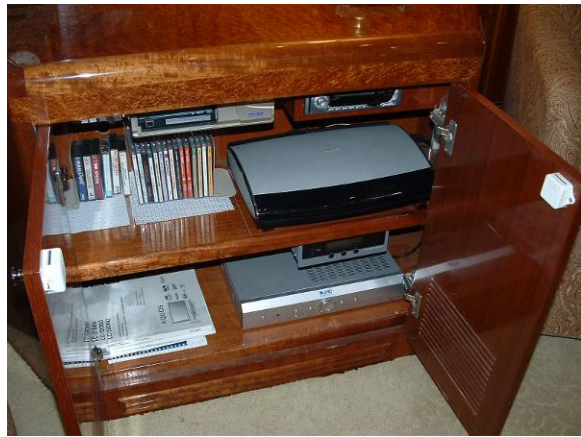
TV cabinet



TV cabinet (closed) & side chairs



TV cabinet (open)



TV cabinet storage



Wine cooler



Overhead decor



Aircraft-type pilothouse door (port)



Galley liquor storage



Galley cabinets



Galley



Galley-sink & microwave



Galley-stove/oven



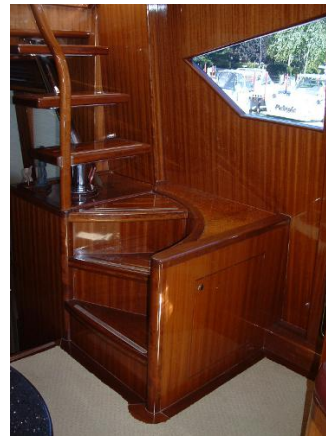
Galley-refrigerator



Galley-trash compactor (dishwasher hidden)



Galley-sinks



PH stairs to flying bridge



Aircraft-type pilothouse door (starboard)



Dinette



Dinette II



Skylight to office/3rd stateroom



Lower station



Lower station II



Lower station III



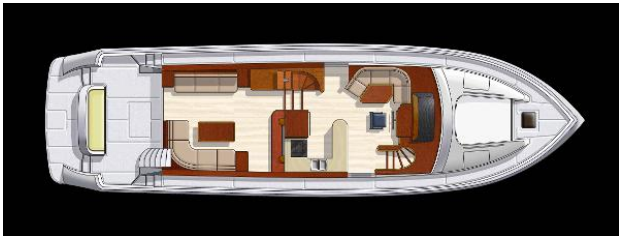
Stidd helm chair



Wheel



Power panel



Layout (TV/chairs in place of port settee)



Lower deck layout



Niche' in lower passageway



Dryer cabinet



Bosch dryer



Washer cabinet



Bosch washer



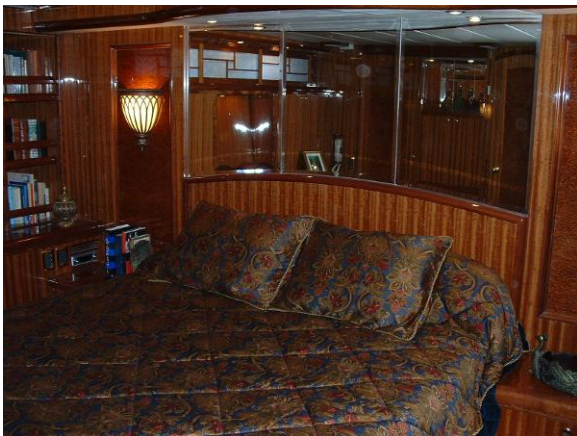
Master stateroom



Master stateroom starboard



Master stateroom vanity



Master stateroom II



Accent lighting



Inlaid doors



TV



Master head



Master head II



Master head sink



Accent lighting/mirrored overhead



Master shower



Master shower II



VIP Stateroom



VIP TV



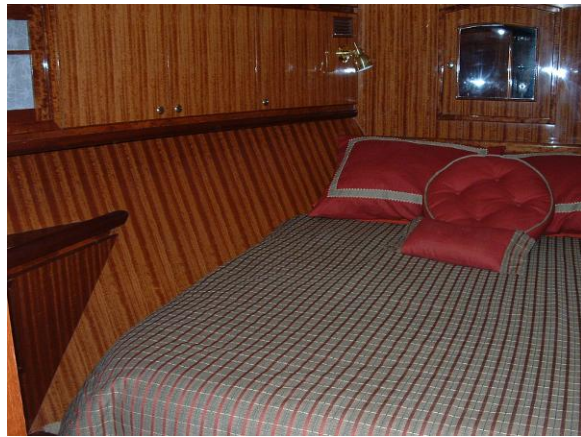
VIP cedar closet (port)



VIP shoji screens



VIP radio & intercom



VIP port storage



VIP queen berth



VIP starboard storage



VIP storage



VIP cedar closet (starboard)



Inlaid doors



VIP head



VIP head sink



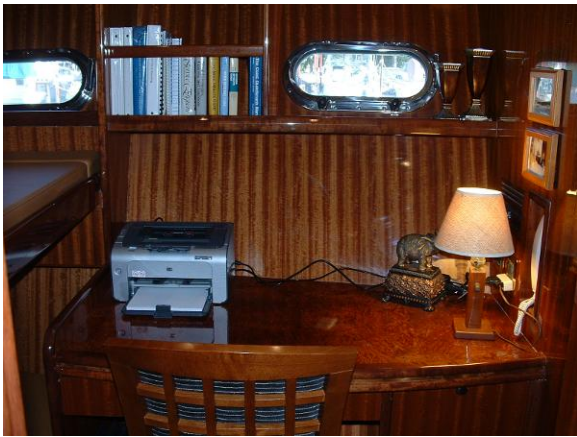
VIP shower



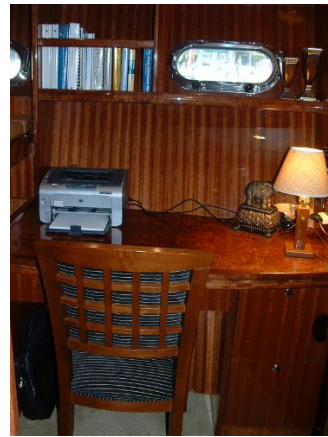
VIP shower II



Office/3rd stateroom (Pullman upper berth)



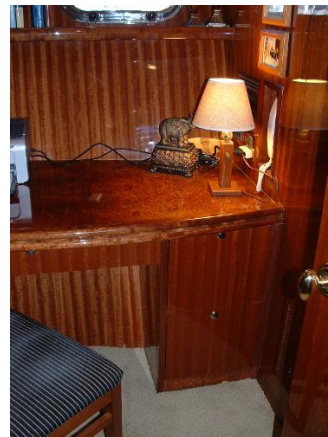
Office desk



Office desk/chair



Office desk/chair II



Office storage cabinet



Lazarette starboard



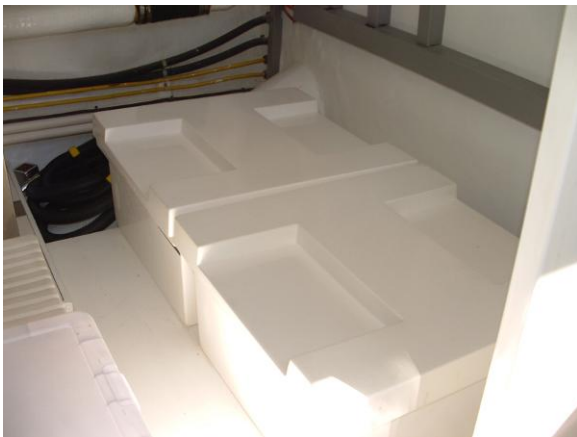
Steering gear



Steering gear II



Lazarette port



Battery boxes



Engine room



Port CAT C-15 ACERT



Sea strainer



Starboard CAT C-15 ACERT



Sea strainer



13 kw generator



20 kw generator



Westbound on the Erie Canal



Heated winter storage every year since new



Launch 5/12/14



Launch 5/12/14



Launch 5/12/14



Bound for Erie 5/19/14



Bound for Erie 5/19/14



Just detailed and waxed 05/19/15



Shine 05/19/15



Crossing Lake Erie 05/19/15