

HARMONY® 700 Remote



Setup Guide

Thank you!

The Harmony 700 Remote Control is your answer to effortless home entertainment. The Activities buttons enable control of all your devices in one convenient remote. You can go from watching TV to watching a DVD to listening to music with the touch of an Activity button. You no longer need to type in codes to get your remote working with your entertainment system. The guided online setup walks you through the step-by-step configuration of your Harmony 700 with your entertainment system and then you'll be ready to sit back and enjoy!

Package contents

- Logitech Harmony 700 Remote Control
- USB cable
- 2 AA rechargeable batteries
- User documentation

Getting to know your Harmony 700

- A** The Activity buttons allow you to start your Activities. If an Activity does not start as expected, press the Help button and answer simple questions to get your Activity working the way you expect.
- B** The buttons around the screen control the functions that appear on the screen such as favorite channels. It also gives you access to other commands and remote functions.
- C** The menu area controls your TV-screen guides and menu.
- D** The color-coded buttons perform cable and satellite functions or you can customize them with your favorite commands.
- E** The channel area puts the most popular buttons at your fingertips. You can control the volume or change channels from one location.
- F** The play area puts your play, pause, skip, and other buttons in one area for quick access.
- G** The number pad.



What to expect

Set aside at least 45 minutes to set up your Harmony remote.

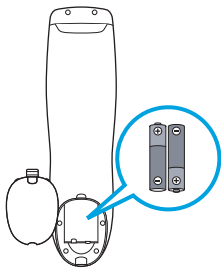
1. Collect your manufacturer and model numbers of all the devices in your entertainment system.
2. Visit setup.myharmony.com on your computer and download the MyHarmony desktop software, create your account, and set up your devices and Activities.
3. Test your remote.

Charging your remote

Charge the batteries before using the remote.

1. Insert the batteries into the remote.
2. Insert the USB cable into the top of the remote.
3. Plug the USB cable into an AC adapter (not included).
4. Plug the AC adapter into an outlet and charge.

Note: Connecting your remote to your PC will not charge the remote's batteries.

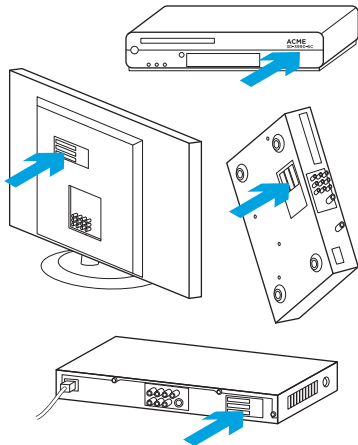


1 Get details about your system

You will need to collect your devices' manufacturer and model numbers before you start.

1. Find the model numbers on the front, back or bottom of each device in your entertainment system.
2. Write down the information in the table provided on the next page (Device type, Manufacturer, Model number).
3. Take note of how your devices are connected together. For example, your DVD player is plugged into Video 1 on your TV etc. For more help, see What are Inputs... on the next page.

MANUFACTURER
MODEL NO: 3D-3990-SC
120V AC - 60HZ 13W
SN: MC110D00001234



Device	Manufacturer	Model number
TV		
Cable/Satellite		
DVD		

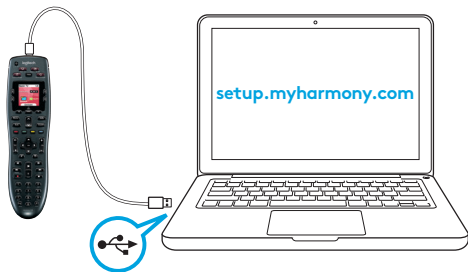
What are inputs... and why do I need to know about them?

Inputs are how your devices are connected. For example, if your DVD player is connected to your TV using Video 1 input, you would need to select Video 1 when setting up your Watch a DVD Activity in the Harmony Remote software. Once you set up Activities on your remote, one touch of an Activity button will power on and set the inputs on all the devices needed for that Activity.

2 Setup

Create an account in the MyHarmony desktop software so that you can set up your Harmony 700 to control your home entertainment system.

1. Visit setup.myharmony.com to download the MyHarmony desktop software.
2. After installing the software, connect your remote to your computer using the supplied USB cable.
3. Follow the on-screen instructions to create a new account or sign in to a current Harmony account, and then set up your devices and Activities
4. Update or sync your remote before you disconnect it from your computer.



3 Test your remote

Test your remote to make sure everything is working.

1. Disconnect your remote from your computer and go to your entertainment system.
2. Go through the tutorial provided on the remote to get to know your remote better.
3. Try your remote to see that it works. If you want to make changes, launch the MyHarmony desktop software from your computer and login to your Harmony account.



We're here to help

Visit support.myharmony.com/700 to find additional support including:

- Set up tutorials
- Support articles
- Troubleshooting guides
- User forums

Important Battery Information

Use only NiMH replacement batteries, size AA R6 with a minimum of 1800 mA.

Caution: Risk of explosion if the battery is replaced with an incorrect type.
Use and replace only with same type and rating as the battery provided.
Charge only with the AC adapter provided with your remote.



www.logitech.com

© 2015 Logitech. All rights reserved. Logitech, the Logitech logo, Harmony, the Harmony logo, and other Logitech marks are owned by Logitech and may be registered. All other trademarks are the property of their respective owners. Logitech assumes no responsibility for any errors that may appear in this manual. Information contained herein is subject to change without notice.

620-007103.002