

HARVARD UNIVERSITY
FACT BOOK
2007-08



ORGANIZATION	Pages
Central Administration	2
Faculties and Allied Institutions	3
Research and Academic Centers	4 – 5
PEOPLE	Pages
Degree Student Enrollment	6 – 9
Degrees Conferred	10 – 14
International Students	15 – 16
Summer School and Non-Degree Students	17
Faculty	18 – 19
Staff	20 – 21
RESOURCES	Pages
Tuition, Fees, and Financial Aid	23 – 26
Sponsored Programs	27 – 31
Library	32 – 33
Physical Plant	34 – 35
Environmental Performance	36 – 39
FY2007 Income and Expenses	41 – 43
Endowment	44 – 45

The Harvard University Fact Book is published annually by:
The Office of Institutional Research
Holyoke Center 780
Cambridge, MA 02138

The address for the electronic version is:

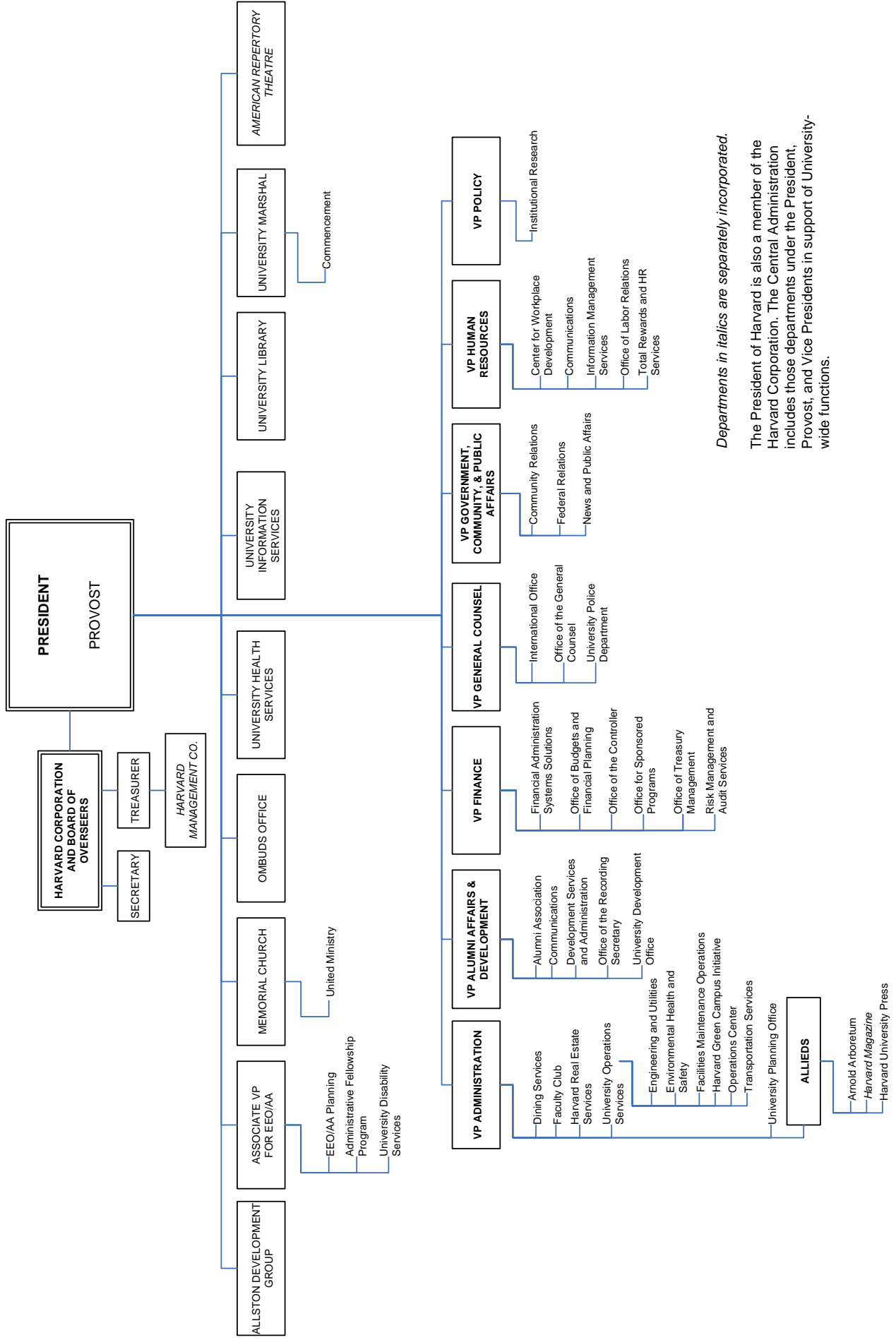
http://www.provost.harvard.edu/institutional_research/factbook.php

If you would like more information about data contained in the Fact Book, contact:

Jason DeWitt, Senior Data Resource Specialist
(617) 495-0591, E-mail: jason_dewitt@harvard.edu
Darrick Yee, Data Resource Specialist
(617) 496-5165, E-mail: darrick_yee@harvard.edu

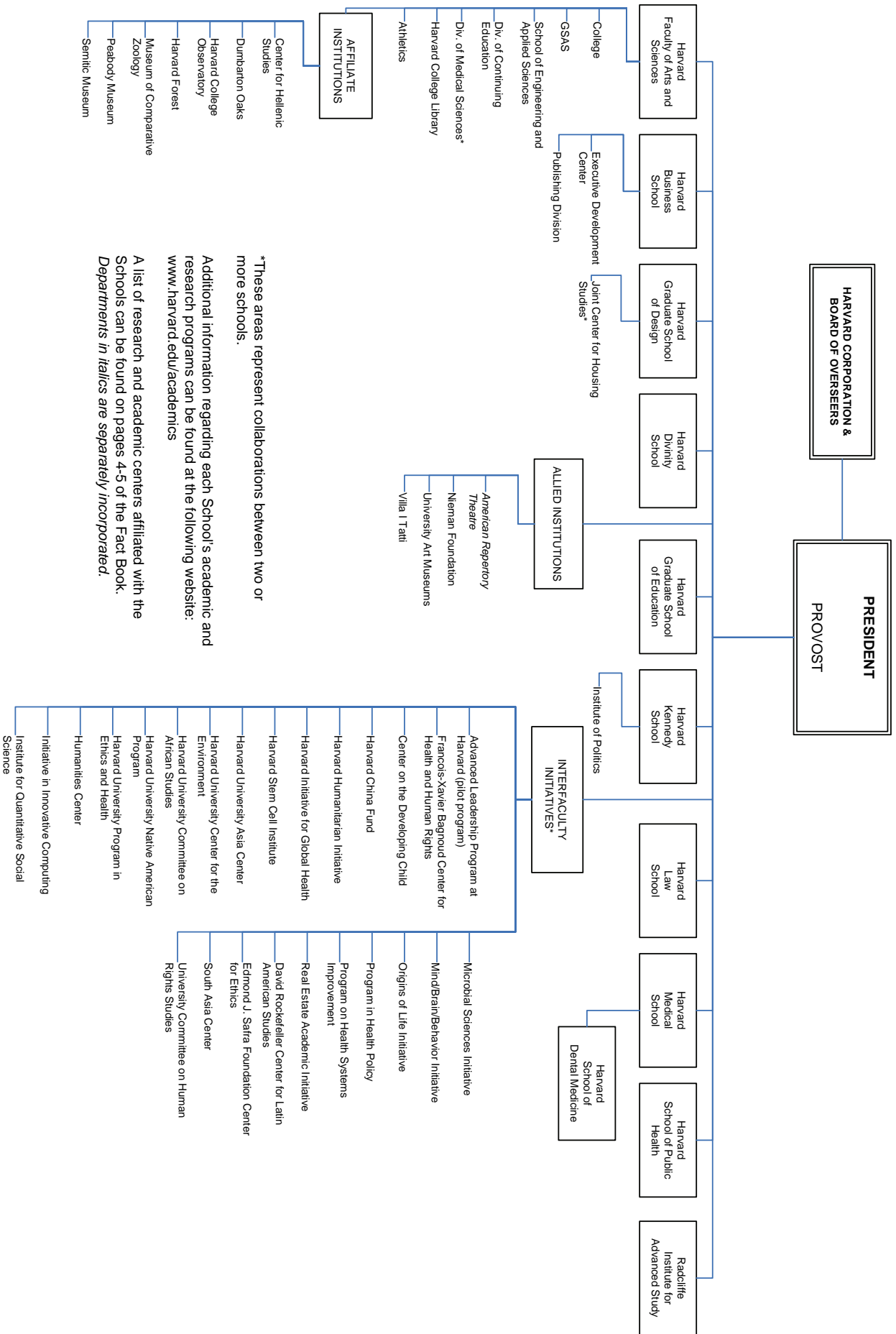
Changes to content after publication are reflected on the web version of the Fact Book.

Copyright 2008 by the President and Fellows of Harvard College



Departments in italics are separately incorporated.

The President of Harvard is also a member of the Harvard Corporation. The Central Administration includes those departments under the President, Provost, and Vice Presidents in support of University-wide functions.



*These areas represent collaborations between two or more schools.

Additional information regarding each School's academic and research programs can be found at the following website: www.harvard.edu/academics

A list of research and academic centers affiliated with the Schools can be found on pages 4-5 of the Fact Book. *Departments in italics are separately incorporated.*

Harvard University Research and Academic Centers

FACULTY of ARTS and SCIENCES

Aga Khan Program for Islamic Architecture⁽¹⁾
 Carpenter Center
 Center for American Political Studies
 Center for Brain Science*
 Center for Hellenic Studies
 Center for Jewish Studies
 Center for Middle Eastern Studies
 Center for Nanoscale Systems
 Center for Systems Biology
 Davis Center for Russian and Eurasian Studies
 W.E.B. DuBois Institute for African and African-American
 Research
 Dumbarton Oaks
 Fairbank Center for East Asian Research
 Film Study Center
 Minda de Gunzburg Center for European Studies
 Harvard University Asia Center***
 Harvard College Observatory
 Harvard Forest
 Harvard Smithsonian Center for Astrophysics
 Harvard University Center for the Environment***
 Harvard University Committee on African Studies***
 Harvard-Yenching Institute
 Humanities Center***
 Institute for Quantitative Social Science***
 Center for Geographic Analysis⁽²⁾
 Harvard-MIT Data Center⁽²⁾
 Institute for Theory and Computation
 Korea Institute
 Laboratory for Particle Physics and Cosmology
 Program for Evolutionary Dynamics
 Edwin O. Reischauer Institute of Japanese Studies
 David Rockefeller Center for Latin American Studies***
 Society of Fellows
 South Asia Initiative at Harvard***
 Prince Alwaleed Bin Talal Islamic Studies Program***
 Ukrainian Research Institute
 Charles Warren Center for Studies in American History
 Weatherhead Center for International Affairs
 Harvard Academy for International and Area Studies⁽³⁾
 Program on U.S. - Japan Relations⁽³⁾

BUSINESS

California Research Center
 C. Roland Christensen Center for Teaching and Learning
 Global Initiative
 Asia-Pacific Research Center
 Europe Research Center
 India Research Center
 Japan Research Office
 Latin America Research Center

BUSINESS (cont.)

Health Care Initiative
 Institute for Strategy and Competitiveness*
 Leadership Initiative
 Arthur M. Rock Center for Entrepreneurship
 Social Enterprise Initiative

DESIGN

Aga Khan Program at the Graduate School of Design
 Center for Technology and Environment
 Joint Center for Housing Studies*
 Real Estate Academic Initiative***

DIVINITY

Center for the Study of World Religions
 Summer Leadership Institute
 Women's Studies in Religion Program

EDUCATION

Achievement Gap Initiative*
 Change Leadership Group
 Collaborative Group on Academic Careers in Higher
 Education
 Executive Leadership Program for Educators at Harvard
 University (ExEL)*
 Harvard Family Research Project
 Principals' Center
 Project for Policy Innovation in Education
 Project Zero
 Public Education Leadership Project*
 WIDE World⁽⁴⁾

ENGINEERING AND APPLIED SCIENCES

Center for Research on Computation and Society
 Harvard Institute for Biologically Inspired Engineering
 Institute for Quantum Science and Engineering
 Kavli Institute for Bionano Science and Engineering
 Materials Research Science and Engineering Center
 Nanoscale Science and Engineering Center⁽⁵⁾
 Rowland Institute

GOVERNMENT

Roy and Lila Ash Institute for Democratic Governance
 and Innovation
 Robert and Renee Belfer Center for Science and
 International Affairs
 Carr Center for Human Rights Policy
 Center for International Development **
 Center for Public Leadership
 Harvard Environmental Economics Program**
 Hauser Center for Nonprofit Organizations**
 Institute of Politics
 Joint Center for Housing Studies*

(1) The Aga Khan Program for Islamic Architecture is a joint program with M.I.T.

(2) These Programs are housed and administered within the Institute for Quantitative Social Science

(3) These Programs are housed and administered within the Weatherhead Center.

(4) WIDE is the Wide-scale Interactive Development for Educators.

(5) The Nanoscale Science and Engineering Center is a joint program with M.I.T., U.C.S.B., and the Boston Museum of Science.

* These Programs represent collaborations between two or more Schools.

** These Programs are housed in particular Schools and report to a dean, but have been granted University-Wide Status.

*** These initiatives have a joint reporting structure to the Provost and to the dean of their home School.

SOURCE: SCHOOLS, OFFICE OF THE PROVOST

Harvard University Research and Academic Centers

GOVERNMENT (cont.)

Mossavar-Rahmani Center for Business and Government
 Joan Shorenstein Center on the Press, Politics and Public Policy
 A. Alfred Taubman Center for State and Local Government⁽¹⁾
 Malcolm Wiener Center for Social Policy
 Women and Public Policy Program

MEDICINE

Center for Biomedical Informatics
 Center for Craniofacial Tissue Engineering
 Center for Excellence in Women's Health*
 Center for Genetics and Genomics, Harvard Medical School-Partners Healthcare*
 Center for Health and the Global Environment
 Center for Hereditary Deafness*
 Center for Immunodeficiency
 Center for Integration of Medicine and Innovative Technology
 Center for Magnetic Resonance*
 Center for Mental Health and Media*
 Center for Neurofibromatosis and Allied Disorders*
 Center for Palliative Care
 Dana Farber/Harvard Cancer Center*
 Division for Research and Education in Complementary and Integrative Medical Therapies
 Division of AIDS*
 Division of Emergency Medicine
 Division of Health Policy Research and Education*
 Division of Health Sciences and Technology
 Division of Medical Ethics*
 Division of Nutrition*
 Division on Primary Care*
 Division of Service Learning
 Division of Sleep Medicine
 Harvard Clinical Research Institute
 Harvard-Mahoney Neuroscience Institute*
 Harvard NeuroDiscovery Center
 Harvard Skin Disease Research Center
 Institute of Chemistry and Cell Biology and Initiative for Chemical Genetics*
 Institute of Proteomics
 JDRF Center for Immunological Tolerance at Harvard⁽²⁾
 New England Primate Research Center
 New England Regional Center of Excellence for Biodefense and Emerging Infectious Diseases*

LAW

Berkman Center for Internet and Society***
 Child Advocacy Program
 East Asian Legal Studies Program
 Environmental Law and Policy Program
 European Law Research Center
 Fund for Tax and Fiscal Policy Research
 Charles Hamilton Houston Institute for Race and Justice
 Human Rights Program

LAW (cont.)

Islamic Legal Studies Program
 Labor and Worklife Program
 Legal History Program
 John M. Olin Center for Law, Economics and Business
 Petrie-Flom Center for Health Law Policy, Biotechnology, and Ethics*
 Program on Corporate Governance
 Program on International Financial Systems
 Program on Negotiation
 Program on the Legal Profession

PUBLIC HEALTH

Francois-Xavier Bagnoud Center for Health and Human Rights***
 Center for Health Communication
 Harvard Center for Population and Development Studies
 Harvard Center for Society and Health
 Harvard Injury Control Center
 Harvard School of Public Health AIDS Initiative

RADCLIFFE INSTITUTE FOR ADVANCED STUDY

Radcliffe Institute Fellowship Program
 Arthur and Elizabeth Schlesinger Library on the History of Women in America

UNIVERSITY INTERFACULTY INITIATIVES⁽³⁾

Advanced Leadership Program at Harvard (pilot program)
 Francois-Xavier Bagnoud Center for Health and Human Rights***
 Berkman Center for Internet and Society***
 Center on the Developing Child
 Harvard China Fund
 Harvard Humanitarian Initiative
 Harvard Initiative for Global Health
 Harvard Stem Cell Institute
 Harvard University Asia Center***
 Harvard University Center for the Environment***
 Harvard University Committee on African Studies***
 Harvard University Committee on Human Rights Studies
 Harvard University Native American Program
 Harvard University Program in Ethics and Health Humanities Center***
 Initiative in Innovative Computing
 Institute for Quantitative Social Science***
 Microbial Sciences Initiative
 Mind/Brain/Behavior Initiative
 Origins of Life Initiative
 Program in Health Policy
 Program on Health Systems Improvement
 Real Estate Academic Initiative***
 David Rockefeller Center for Latin American Studies***
 Edmond J. Safra Foundation Center for Ethics
 South Asia Initiative at Harvard***
 Prince Alwaleed Bin Talal Islamic Studies Program***

(1) The Taubman Center includes the Rappaport Institute for Greater Boston.

(2) JDRF is the Juvenile Diabetes Research Foundation.

(3) These Initiatives report to the Provost.

* These Programs represent collaborations between two or more Schools.

** These Programs are housed in particular Schools and report to a dean, but have been granted University-Wide Status.

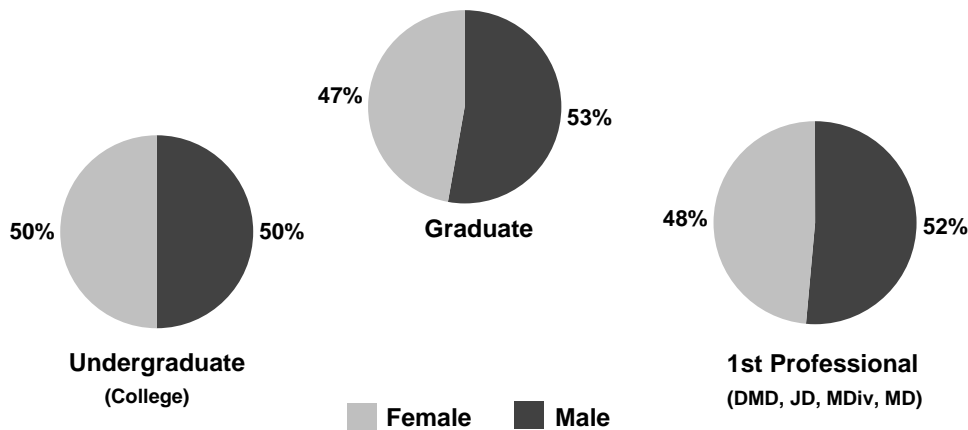
*** These initiatives have a joint reporting structure to the Provost and to the dean of their home School.

SOURCE: SCHOOLS, OFFICE OF THE PROVOST

Degree Student Head Count: Fall 2007

Counts taken as of October 15, 2007

	Male	Female	Total	Full-Time	Part-Time	Total
College ^(1,4)						
Freshmen	834	846	1,680	1,680	-	1,680
Sophomores	808	887	1,695	1,694	1	1,695
Juniors ⁽²⁾	852	808	1,660	1,658	2	1,660
Seniors	826	787	1,613	1,609	4	1,613
Subtotal	3,320	3,328	6,648	6,641	7	6,648
GSAS ^(3,4)						
Division of Med. Sci.	244	297	541	541	-	541
All Other	1,783	1,358	3,141	3,122	19	3,141
Subtotal	2,027	1,655	3,682	3,663	19	3,682
Business	1,205	649	1,854	1,854	-	1,854
Dental	124	126	250	250	-	250
Design	311	291	602	600	2	602
Divinity	218	235	453	433	20	453
Education	230	675	905	806	99	905
Government	538	392	930	880	50	930
Law	1,064	902	1,966	1,966	-	1,966
Medical	403	406	809	809	-	809
Public Health	289	508	797	598	199	797
Extension						
Undergraduate	223	210	433	196	237	433
Graduate	379	321	700	147	553	700
Subtotal, All Degree Students	10,331	9,698	20,029	18,843	1,186	20,029
Adj. for Joint Degree Students	(50)	(24)	(74)	(74)	-	(74)
TOTAL	10,281	9,674	19,955	18,769	1,186	19,955



(1) Students in the Advanced Standing Program are counted as Juniors in their second year and Seniors in their third and fourth year. College total excludes students who are studying abroad.

(2) Counts for Juniors include 27 undergraduates unclassified by year.

(3) Candidates for the Ph.D. are enrolled in GSAS but may cross register for courses in other faculties.

(4) GSAS and Harvard College include engineering students.

SOURCE: REGISTRAR OFFICES

Historical Enrollments: Fall 2002 - 2007 ⁽¹⁾

Degree Student Head Count by School

Counts taken as of October 15

	2002	2003	2004	2005	2006	2007
College ^(2,4)	6,649	6,597	6,562	6,613	6,715	6,648
GSAS ^(3,4)	3,357	3,510	3,638	3,753	3,750	3,682
Business	1,836	1,832	1,823	1,851	1,855	1,854
Dental	247	247	243	240	243	250
Design	556	595	619	579	618	602
Divinity	443	455	428	423	439	453
Education	1,057	1,080	1,069	975	971	905
Government	896	924	956	944	1,029	930
Law	1,915	1,899	1,921	1,948	1,966	1,966
Medical	787	780	766	784	818	809
Public Health	825	737	825	787	771	797
Extension						
Undergraduate	401	403	385	389	385	433
Graduate	671	676	592	599	590	700
Subtotal, All Degree Students	19,640	19,735	19,827	19,885	20,150	20,029
Adj. for Joint Degree Students	(64)	(52)	(58)	(65)	(72)	(74)
TOTAL	19,576	19,683	19,769	19,820	20,078	19,955
Enrollment Level ⁽⁵⁾	2002	2003	2004	2005	2006	2007
Undergraduates						
Full-Time	6,822	6,767	6,722	6,792	6,880	6,837
Part-Time	228	233	225	210	220	244
Subtotal	7,050	7,000	6,947	7,002	7,100	7,081
Graduate Students						
Full-Time	8,858	9,038	9,120	9,112	9,274	9,224
Part-Time	992	1,004	1,059	1,026	963	935
Subtotal	9,850	10,042	10,179	10,138	10,237	10,159
1st Professional Degree ⁽⁶⁾						
Full-Time	2,722	2,668	2,680	2,728	2,796	2,782
Part-Time	18	25	21	17	17	7
Subtotal	2,740	2,693	2,701	2,745	2,813	2,789
TOTAL	19,640	19,735	19,827	19,885	20,150	20,029

(1) Several Harvard schools enrolled students displaced by Hurricane Katrina during Fall 2005. These students are included in the counts for non-degree students on page 17.

(2) College totals exclude students who were studying abroad at the time data was compiled.

(3) Candidates for the Ph.D. are enrolled in GSAS but may cross register for courses in other faculties.

(4) Counts for GSAS and Harvard College include engineering students.

(5) Includes degree candidates from the Extension School. Not adjusted for joint degree students.

(6) 1st Professional degrees include DMD, JD, MDiv, and MD.

SOURCE: REGISTRAR OFFICES

Student Enrollment by Degree: Fall 2007
 Counts taken as of October 15, 2007

		Male		Female		Total
		Full-Time	Part-Time	Full-Time	Part-Time	
College ^(1,2)	A.B., S.B.	3,316	4	3,325	3	6,648
GSAS ⁽²⁾	A.M., S.M., M.E.	88	14	65	5	172
	Ph.D.	1,925	-	1,585	-	3,510
Business	M.B.A.	1,179	-	634	-	1,813
	D.B.A.	26	-	15	-	41
Dental	D.M.D.	63	-	84	-	147
	M.M.Sc.	25	-	16	-	41
	D.M.Sc.	13	-	7	-	20
	Cert.	23	-	19	-	42
Design	M.Arch.	183	-	145	2	330
	M.A.U.D., M.L.A.U.D.	21	-	19	-	40
	M.Des.	44	-	15	-	59
	M.L.A.	25	-	62	-	87
	M.U.P.	21	-	33	-	54
	D.Des.	17	-	15	-	32
Divinity	M.Div.	64	2	87	5	158
	M.T.S.	115	3	112	9	239
	Th.M.	4	1	1	-	6
	Th.D.	29	-	21	-	50
Education	Ed.M.	118	16	379	54	567
	Ed.D.	88	8	206	21	323
	C.A.S.	-	-	15	-	15
Government	M.P.A. ⁽³⁾	189	20	122	7	338
	M.P.A.I.D.	76	3	62	3	144
	M.P.P.	222	10	185	6	423
	M.U.P.	6	-	5	-	11
	Ph.D.	11	1	2	-	14
Law	J.D.	926	-	800	-	1,726
	LL.M.	95	-	77	-	172
	S.J.D.	43	-	25	-	68
Medical	M.D.	382	-	376	-	758
	M.M.Sc.	21	-	30	-	51
Public Health	M.P.H., M.O.H.	79	43	105	62	289
	M.S.	42	41	135	16	234
	D.P.H.	3	3	5	3	14
	D.S.	68	10	161	21	260
Extension	A.A., A.L.B.	109	114	87	123	433
	A.L.M., Grad. Cert.	70	309	77	244	700
	TOTAL ⁽⁴⁾	9,729	602	9,114	584	20,029

(1) College total excludes students who are studying abroad.

(2) Harvard College and GSAS include engineering students.

(3) M.P.A. Program includes the two-year M.P.A. program and the one-year M.P.A. Mid-Career program.

(4) Not adjusted for joint degree students.

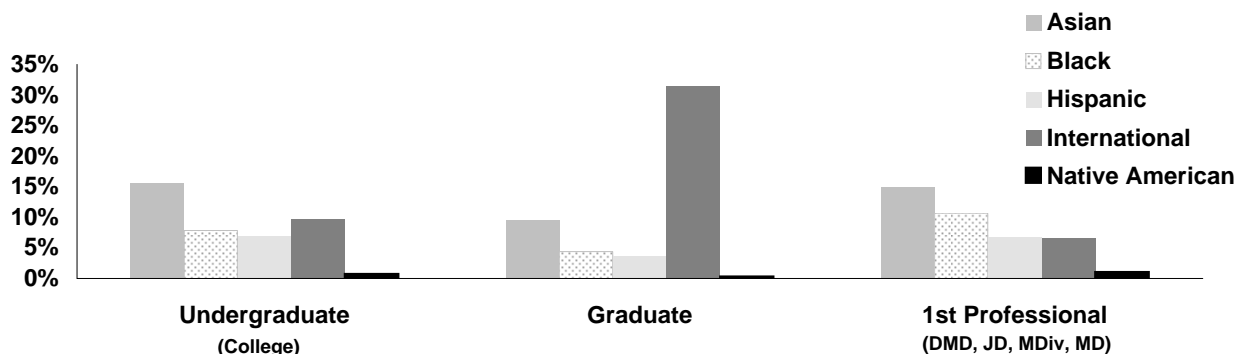
SOURCE: REGISTRAR OFFICES

Degree Student Enrollment by Ethnicity: Fall 2007

Counts taken as of October 15, 2007

	College	GSAS	Business	Dental	Design	Divinity	Education	Government	Law	Medical	Public Health	Extension	Total
Asian/Pacific Islander													
Male	442	146	106	20	31	13	18	36	84	97	27	68	1,088
Female	591	176	94	40	51	13	71	38	91	115	46	49	1,375
Subtotal	1,033	322	200	60	82	26	89	74	175	212	73	117	2,463
Percent	16%	9%	11%	24%	14%	6%	10%	8%	9%	26%	9%	10%	12.3%
Black/Non-Hispanic													
Male	230	32	53	7	5	12	31	25	83	45	16	34	573
Female	290	77	50	4	4	10	52	27	109	44	30	23	720
Subtotal	520	109	103	11	9	22	83	52	192	89	46	57	1,293
Percent	8%	3%	6%	4%	1%	5%	9%	6%	10%	11%	6%	5%	6.5%
Hispanic													
Male	213	67	32	5	14	6	16	32	60	32	1	34	512
Female	252	46	18	6	12	10	34	27	56	31	19	29	540
Subtotal	465	113	50	11	26	16	50	59	116	63	20	63	1,052
Percent	7%	3%	3%	4%	4%	4%	6%	6%	6%	8%	3%	6%	5.3%
International Students													
Male	383	713	428	28	116	28	27	229	178	29	120	74	2,353
Female	262	457	195	23	82	17	84	156	153	29	132	90	1,680
Subtotal	645	1,170	623	51	198	45	111	385	331	58	252	164	4,033
Percent	10%	32%	34%	20%	33%	10%	12%	41%	17%	7%	32%	14%	20.1%
Native American													
Male	25	3	3	-	2	3	1	3	8	5	-	3	56
Female	24	2	-	-	-	1	2	5	6	7	6	4	57
Subtotal	49	5	3	-	2	4	3	8	14	12	6	7	113
Percent	1%	0%	0%	0%	0%	1%	0%	1%	1%	1%	1%	1%	0.6%
White/Non-Hispanic													
Male	1,572	837	427	62	119	137	95	166	503	175	89	345	4,527
Female	1,409	690	226	45	113	168	317	102	387	165	194	320	4,136
Subtotal	2,981	1,527	653	107	232	305	412	268	890	340	283	665	8,663
Percent	45%	41%	35%	43%	39%	67%	46%	29%	45%	42%	36%	59%	43.3%
Unknown/Other													
Male	455	229	156	2	24	19	42	47	148	20	36	44	1,222
Female	500	207	66	8	29	16	115	37	100	15	81	16	1,190
Subtotal	955	436	222	10	53	35	157	84	248	35	117	60	2,412
Percent	14%	12%	12%	4%	9%	8%	17%	9%	13%	4%	15%	5%	12.0%
TOTAL ⁽¹⁾	6,648	3,682	1,854	250	602	453	905	930	1,966	809	797	1,133	20,029

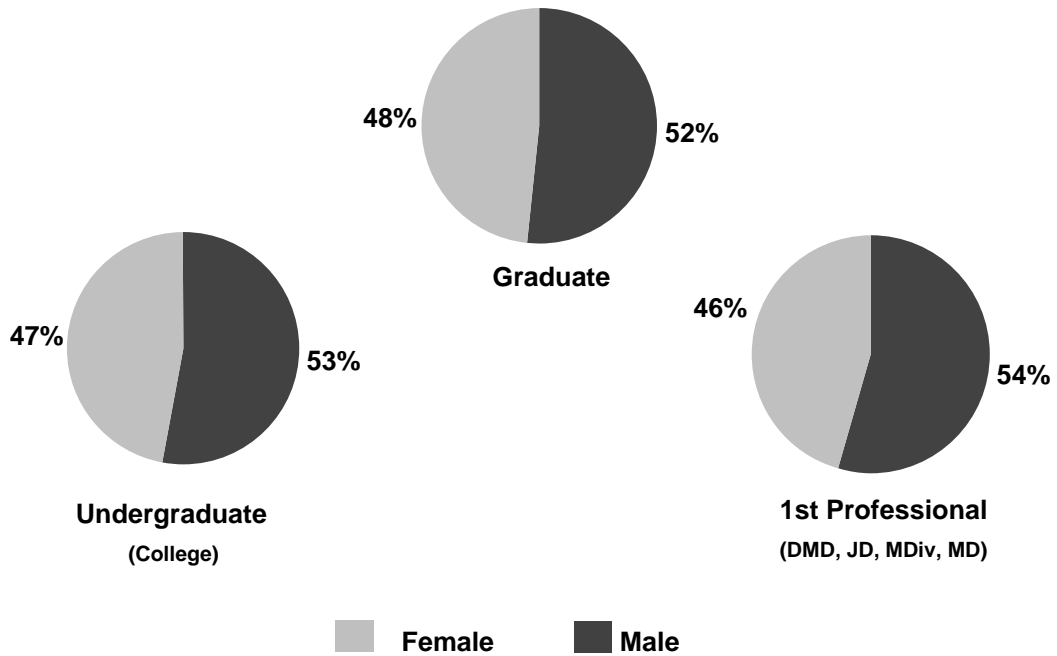
Percentage of Minority and International Students by Enrollment Level



(1) Not adjusted for joint degree students. Harvard College and GSAS include engineering students.

Degrees Conferred by School ⁽¹⁾ Academic Year 2006-2007

	Male	Female	Total
College	893	803	1,696
GSAS	560	383	943
Business	557	349	906
Dental	32	39	71
Design	110	95	205
Divinity	72	76	148
Education	152	511	663
Government	352	240	592
Law	418	324	742
Medical	116	96	212
Public Health	181	216	397
Extension			
Undergraduate	56	59	115
Graduate	152	150	302
TOTAL	3,651	3,341	6,992



(1) Not adjusted for joint degree students.
SOURCE: REGISTRAR OFFICES

Degrees Conferred by Program: Academic Year 2006-2007 ⁽¹⁾

		Male	Female	Total
College	A.B.	877	794	1,671
	S.B.	16	9	25
GSAS	A.M.	191	151	342
	M.F.S.	1	-	1
	S.M.	48	11	59
	Ph.D.	320	221	541
Business	M.B.A.	554	347	901
	D.B.A.	3	2	5
Dental	D.M.D.	13	17	30
	M.M.Sc.	7	6	13
	D.M.Sc.	3	5	8
	Certificate	9	11	20
Design	M.Arch.	54	46	100
	M.A.U.D., M.L.A.U.D.	18	6	24
	M.Des.	8	3	11
	M.L.A.	13	24	37
	M.U.P.	11	13	24
	D.Des.	6	3	9
Divinity	M.Div.	21	26	47
	M.T.S.	46	50	96
	Th.M.	4	-	4
	Th.D.	1	-	1
Education	Ed.M.	135	456	591
	Ed.D.	12	41	53
	C.A.S.	5	14	19
Government	M.P.A. (1 YEAR)	135	72	207
	M.P.A. (2 YEAR)	65	37	102
	M.P.A.I.D.	45	26	71
	M.P.P.	104	101	205
	M.U.P.	3	4	7
Law	J.D.	323	251	574
	LL.M.	91	63	154
	S.J.D.	4	10	14
Medical	M.D.	100	89	189
	M.M.Sc.	16	7	23
Public Health	M.O.H.	2	-	2
	M.P.H.	117	103	220
	M.S.	47	76	123
	D.P.H.	-	5	5
	D.S.	15	32	47
Extension	A.A.	4	5	9
	A.L.B.	52	54	106
	A.L.M.	96	93	189
	Graduate Certificates	56	57	113
TOTAL		3,651	3,341	6,992

(1) Not adjusted for joint degree students.

SOURCE: REGISTRAR OFFICES

Harvard College Undergraduate Degrees Conferred by Concentration ⁽¹⁾ Academic Year 2006-2007

	Concentration	Male	Female	Total
Humanities	English and American Literature and Language	39	49	88
	History and Literature	20	32	52
	Visual and Environmental Studies	15	22	37
	Philosophy	21	9	30
	Romance Languages and Literatures	4	15	19
	Literature	11	8	19
	History of Art and Architecture	3	15	18
	Near Eastern Languages and Civilizations	8	6	14
	Classics	9	4	13
	Music	6	3	9
	Linguistics	3	6	9
	Comparative Study of Religion	2	6	8
	East Asian Studies	3	4	7
	Slavic Languages and Literature	1	4	5
	Sanskrit and Indian Studies	3	-	3
	Classical Archeology	1	2	3
	German	2	1	3
	Folklore and Mythology	1	1	2
	Classics (Greek)	1	1	2
	Classics (Latin)	-	1	1
	Humanities Subtotal	153	189	342
Natural Sciences	Biochemical Sciences	43	47	90
	Biology	33	47	80
	Applied Mathematics	35	8	43
	Computer Science	30	4	34
	Engineering Sciences (S.B. and A.B.)	23	11	34
	Mathematics	45	5	50
	Physics	35	10	45
	Chemistry	19	6	25
	Neurobiology	5	17	22
	Human Evolutionary Biology	3	16	19
	Environmental Science and Public Policy	8	11	19
	Chemistry and Physics	13	5	18
	Earth and Planetary Sciences	8	5	13
	Astronomy and Astrophysics	4	2	6
	Organismic and Evolutionary Biology	1	3	4
	Statistics	1	-	1
		Natural Sciences Subtotal	306	197
Social Sciences	Economics	190	72	262
	Government	126	85	211
	Psychology	23	107	130
	Social Studies	43	50	93
	History	46	28	74
	Anthropology	13	39	52
	Sociology	14	25	39
	History of Science	9	26	35
	African and African American Studies	6	6	12
	Studies of Women, Gender and Sexuality	1	8	9
	Social Sciences Subtotal	471	446	917
	Special Concentrations Subtotal	6	4	10
	Grand Total ⁽¹⁾	936	836	1,772
	Joint Concentrators	43	33	76
	Unduplicated Student Count	893	803	1,696

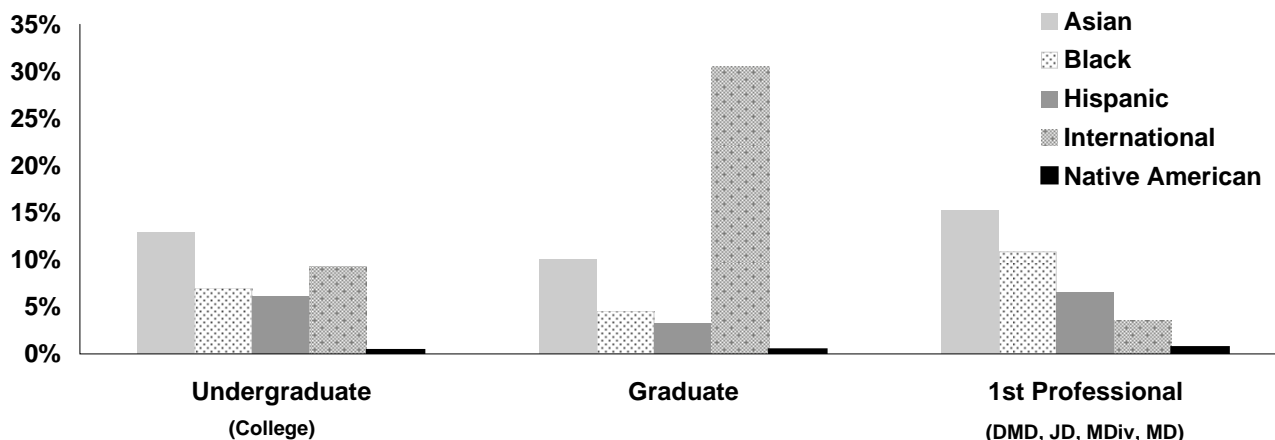
(1) Both concentrations for joint concentrators are included. An adjustment is provided to obtain the total unduplicated student count.

SOURCE: REGISTRAR OFFICES

Degrees Conferred by Student Ethnicity: Academic Year 2006-2007⁽¹⁾

	College	GSAS	Business	Dental	Design	Divinity	Education	Government	Law	Medical	Public Health	Extension	Total
Asian/Pacific Islander													
Male	98	47	53	9	12	2	13	22	35	29	24	21	365
Female	121	27	60	15	25	6	46	20	35	20	30	15	420
Subtotal	219	74	113	24	37	8	59	42	70	49	54	36	785
Percent	13%	8%	12%	34%	18%	5%	9%	7%	9%	23%	14%	9%	11.2%
Black/Non-Hispanic													
Male	49	9	28	1	1	4	15	15	23	12	6	7	170
Female	70	17	21	-	-	5	42	16	33	17	13	8	242
Subtotal	119	26	49	1	1	9	57	31	56	29	19	15	412
Percent	7%	3%	5%	1%	0%	6%	9%	5%	8%	14%	5%	4%	5.9%
Hispanic													
Male	51	13	10	2	2	4	4	10	17	10	8	7	138
Female	52	15	10	2	3	3	21	16	17	9	8	10	166
Subtotal	103	28	20	4	5	7	25	26	34	19	16	17	304
Percent	6%	3%	2%	6%	2%	5%	4%	4%	5%	9%	4%	4%	4.3%
International Students													
Male	95	187	196	-	48	-	17	160	108	-	65	31	907
Female	62	103	105	-	26	-	59	79	82	-	53	36	605
Subtotal	157	290	301	0	74	0	76	239	190	0	118	67	1,512
Percent	9%	31%	33%	0%	36%	0%	11%	40%	26%	0%	30%	16%	21.6%
Native American													
Male	3	-	2	-	-	1	1	3	3	2	1	-	16
Female	4	2	1	-	2	-	3	3	1	-	1	1	18
Subtotal	7	2	3	-	2	1	4	6	4	2	2	1	34
Percent	0%	0%	0%	0%	1%	1%	1%	1%	1%	1%	1%	0%	0.5%
White/Non-Hispanic													
Male	471	233	210	14	41	49	70	111	180	61	59	125	1,624
Female	373	179	114	17	32	52	249	80	119	50	84	130	1,479
Subtotal	844	412	324	31	73	101	319	191	299	111	143	255	3,103
Percent	50%	44%	36%	44%	36%	68%	48%	32%	40%	52%	36%	61%	44.4%
Unknown/Other													
Male	126	71	58	7	6	12	32	31	52	2	18	17	432
Female	121	40	38	4	7	10	91	26	37	-	27	9	410
Subtotal	247	111	96	11	13	22	123	57	89	2	45	26	842
Percent	15%	12%	11%	15%	6%	15%	19%	10%	12%	1%	11%	6%	12.0%
TOTAL	1,696	943	906	71	205	148	663	592	742	212	397	417	6,992

Percentage of Degrees Conferred to Minority and International Students



(1) Not adjusted for joint degree students.
SOURCE: REGISTRAR OFFICES

Degrees Conferred: Academic Year 2002-2007⁽¹⁾

	Academic Year	2002	2003	2004	2005	2006	2007
College	A.B.	1,656	1,686	1,658	1,672	1,629	1,671
	S.B.	9	5	13	17	11	25
	Subtotal	1,665	1,691	1,671	1,689	1,640	1,696
GSAS	A.M.	325	363	349	331	402	342
	M.E.	-	1	1	-	-	-
	M.F.S.	3	-	-	-	4	1
	S.M.	65	58	60	66	56	59
	Ph.D.	383	392	444	413	473	541
	Subtotal	776	814	854	810	935	943
Business	M.B.A.	916	887	894	884	903	901
	D.B.A.	4	3	4	6	3	5
	Subtotal	920	890	898	890	906	906
Dental	D.M.D.	32	36	33	34	32	30
	M.M.Sc.	14	15	12	12	9	13
	D.M.S.	10	3	3	11	4	8
	Cert.	18	20	19	12	36	20
	Subtotal	74	74	67	69	81	71
Design	M. Arch.	98	91	95	87	81	100
	M.A.U.D., M.L.A.U.D.	24	25	20	28	23	24
	M.Des.	51	51	67	55	45	11
	M.L.A.	24	27	29	47	25	37
	M.U.P.	14	15	17	32	21	24
	D.Des.	11	8	8	7	12	9
	Subtotal	222	217	236	256	207	205
Divinity	M.Div.	38	50	44	58	42	47
	M.T.S.	102	83	102	94	97	96
	Th.M.	4	7	5	4	9	4
	Th.D.	8	3	6	10	9	1
	Subtotal	152	143	157	166	157	148
Education	Ed.M.	603	589	617	643	580	591
	Ed.D.	78	59	60	53	70	53
	C.A.S.	3	4	4	3	11	19
	Subtotal	684	652	681	699	661	663
Government	M.P.A. (1 Year)	202	209	225	208	172	207
	M.P.A. (2 Year)	84	86	89	90	103	102
	M.P.A.I.D.	56	77	63	64	63	71
	M.P.P.	158	163	138	194	175	205
	M.U.P.	5	7	10	6	5	7
	Subtotal	505	542	525	562	518	592
Law	J.D.	554	575	551	547	582	574
	LL.M.	144	130	157	161	159	154
	S.J.D.	7	14	8	3	7	14
	Subtotal	705	719	716	711	748	742
Medicine	M.D.	157	165	177	147	152	189
	M.M.Sc.	13	24	24	26	22	23
	Subtotal	170	189	201	173	174	212
Public Health	M.P.H.	214	211	209	213	214	220
	M.S., M.O.H.	134	152	137	162	164	125
	D.P.H., D.S.	42	65	39	54	49	52
	Subtotal	390	428	385	429	427	397
Extension	A.A.	16	20	13	20	15	9
	A.L.B.	134	113	120	118	108	106
	A.L.M.	84	82	91	112	140	189
	Grad. Cert.	312	245	233	184	202	113
	Subtotal	546	460	457	434	465	417
	TOTAL	6,809	6,819	6,848	6,888	6,919	6,992

(1) Not adjusted for joint degree students.

SOURCE: REGISTRAR OFFICES

International Enrollment: Fall 2007 ⁽¹⁾

	Africa	Asia	Europe	Latin America	Middle East	North America	Oceania	Stateless	Total
College	47	153	196	27	41	125	15	1	605
GSAS	15	549	428	63	94	144	32	-	1,325
Business	22	172	179	75	38	94	18	-	598
Dental	-	15	5	1	9	14	-	-	44
Design	2	118	40	7	8	22	1	-	198
Divinity	7	23	6	-	-	7	-	-	43
Education	3	49	15	8	4	16	1	-	96
Government	28	160	87	43	22	35	7	-	382
Law	23	82	73	20	18	57	8	-	281
Medical	5	9	9	3	1	20	2	-	49
Public Health	22	107	26	11	13	31	6	-	216
Extension	3	27	16	19	3	7	1	-	76
TOTAL	177	1,464	1,080	277	251	572	91	1	3,913

(1) Counts include full-time degree and non-degree students only, which include transfer and special students, visiting undergraduates, and Extension School enrollees. Counts exclude executive education and professional development programs.

SOURCE: INTERNATIONAL OFFICE

Historical Enrollment of International Students: Fall 2002 - 2007⁽¹⁾

	Fall					
	2002	2003	2004	2005	2006	2007
Africa						
Ghana	15	19	17	17	25	24
Kenya	14	22	23	18	21	17
Nigeria	22	24	20	25	22	27
South Africa	30	23	23	22	22	21
Tanzania	7	4	7	10	7	12
Other	60	62	58	70	66	76
Subtotal	148	154	148	162	163	177
Asia						
China	337	354	361	378	403	400
India	112	133	167	189	193	216
Japan	134	127	137	135	130	127
South Korea	207	191	218	244	269	297
Taiwan	86	82	103	113	113	117
Other	285	279	281	298	313	307
Subtotal	1,161	1,166	1,267	1,357	1,421	1,464
Europe						
Bulgaria	41	42	48	51	54	52
France	83	78	68	76	82	81
Germany	124	132	137	159	149	158
Italy	51	54	46	53	53	67
Spain	55	53	51	44	52	52
United Kingdom	174	180	191	177	194	201
Other	451	473	477	462	468	469
Subtotal	979	1,012	1,018	1,022	1,052	1,080
Latin America						
Argentina	60	55	48	35	44	42
Brazil	68	63	63	64	61	71
Chile	26	26	33	32	33	32
Colombia	50	31	43	40	50	35
Peru	18	20	22	20	28	24
Other	86	65	60	58	72	73
Subtotal	308	260	269	249	288	277
Middle East						
Cyprus	6	11	15	18	16	15
Iran	3	5	9	8	13	11
Israel	75	71	76	71	81	77
Lebanon	8	12	15	13	16	22
Turkey	79	71	74	71	80	90
Other	28	34	32	34	31	36
Subtotal	199	204	221	215	237	251
North America						
Canada	492	444	467	481	471	489
Mexico	85	71	74	78	98	83
Subtotal	577	515	541	559	569	572
Oceania						
Australia	66	70	67	82	68	67
Fiji	-	-	-	1	-	-
New Zealand	19	21	15	20	21	24
Subtotal	85	91	82	103	89	91
Stateless	2	-	-	2	2	1
TOTAL	3,459	3,402	3,546	3,669	3,821	3,913

Africa Other: Algeria, Benin, Botswana, Burkina Faso, Cameroon, Camoros, Côte d'Ivoire, Egypt, Equatorial Guinea, Eritrea, Ethiopia, Lesotho, Liberia, Malawi, Mauritius, Morocco, Niger, Rwanda, Senegal, Sierra Leone, Sudan, Swaziland, Togo, Tunisia, Uganda, Zambia, Zimbabwe.

Asia Other: Afghanistan, Bangladesh, Bhutan, Brunei, Burma (Myanmar), Hong Kong, Indonesia, Kazakhstan, Malaysia, Mongolia, Nepal, Pakistan, Philippines, Singapore, Sri Lanka, Thailand, Uzbekistan, Vietnam.

Europe Other: Albania, Armenia, Austria, Azerbaijan, Belarus, Belgium, Bosnia and Herzegovina, Croatia, Czech Republic, Denmark, Estonia, Finland, Georgia, Greece, Hungary, Iceland, Ireland, Jersey, Latvia, Liechtenstein, Lithuania, Luxembourg, Macedonia, Moldova, Montenegro, Netherlands, Norway, Poland, Portugal, Romania, Russia, Slovakia, Slovenia, Sweden, Switzerland, Ukraine.

Latin America Other: The Bahamas, Barbados, Bermuda, Bolivia, Costa Rica, Dominica, Dominican Republic, Ecuador, El Salvador, Guatemala, Guyana, Haiti, Honduras, Jamaica, Panama, Paraguay, Trinidad and Tobago, Uruguay, Venezuela.

Middle East Other: Bahrain, Iraq, Jordan, Kuwait, Qatar, Saudi Arabia, Syria, United Arab Emirates, West Bank.

(1) Counts include full-time degree and non-degree students only, which includes transfer and special students, visiting undergraduates, and Extension School enrollees. Counts exclude executive education and professional development programs. Countries listed are for Fall 2007. Information on countries for enrollments in prior years can be obtained from the International Office.

SOURCE: INTERNATIONAL OFFICE

Summer School Enrollment: Summer 2002 - 2007

Harvard Students by School ⁽¹⁾

	2002	2003	2004	2005	2006	2007
College	322	348	334	435	497	594
GSAS	61	56	55	76	57	77
Education	5	8	10	10	3	5
Extension	298	307	365	354	339	387
Other Harvard Schools	17	10	21	11	16	14
Subtotal	703	729	785	886	912	1,077

Other Students by Educational Level ⁽²⁾

Secondary School	1,320	1,130	1,020	1,156	1,444	1,409
Graduate	1,522	1,748	1,593	1,656	1,831	2,002
Undergraduate	1,050	965	1,122	1,109	1,286	1,362
Unknown	299	72	89	71	67	70
Subtotal	4,191	3,915	3,824	3,992	4,628	4,843
TOTAL	4,894	4,644	4,609	4,878	5,540	5,920

Non-Degree Headcount: Fall 2002 - 2007 ⁽³⁾

	2002	2003	2004	2005	2006	2007		
						Male	Female	Total
College	-	-	-	36	-	-	-	-
GSAS	204	197	188	220	184	85	75	160
Design	3	3	2	6	2	3	-	3
Divinity	18	11	16	7	8	8	6	14
Education	103	84	95	89	104	22	85	107
Government	8	9	10	8	11	18	3	21
Law	47	54	40	68	49	26	22	48
Medical	-	-	-	1	-	-	-	-
Public Health	1	-	-	22	5	6	2	8
Extension ⁽⁴⁾	4,945	4,758	4,470	4,675	5,265	2,432	2,868	5,300
TOTAL	5,329	5,116	4,821	5,132	5,628	2,600	3,061	5,661

(1) Counts include matriculating Harvard students enrolled in Harvard courses during the summer session.

(2) Beginning with 2004, high school students are counted as undergraduates instead of Secondary School students.

(3) Non-degree enrollments include all students enrolled on October 15 in at least one class that is creditable toward a degree or formal award.

2005 counts include 58 graduate students and 36 College students displaced by Hurricane Katrina.

(4) Counts are for the first semester only. This significantly undercounts yearly enrollment in the Extension School as approximately the same number of new students might be enrolled in the second semester.

SOURCE: HARVARD UNIVERSITY EXTENSION SCHOOL AND REGISTRAR OFFICES

University Faculty: Fall 2007

	Head Count			Full-time	Head Count			Full-time	Head Count			Full-time
	Men	Women	Total	Equivalent	Men	Women	Total	Equivalent	Men	Women	Total	Equivalent
Arts and Sciences												
Professor, Tenured ⁽¹⁾	363	99	462	444.3	73	16	89	87.1	22	6	28	22.0
Associate Professor, Tenure Track	36	25	61	61.0	28	6	34	32.0	11	4	15	13.6
Assistant Professor, Tenure Track ⁽²⁾	75	48	123	122.0	37	19	56	52.5	6	4	10	10.0
Total Ladder Faculty	474	172	646	627.3	138	41	179	171.6	39	14	53	45.6
Professor of Practice, Non-Ladder ⁽³⁾	10	8	18	14.5	13	2	15	14.5	-	-	-	-
Other Instructional Faculty, Non-Ladder ⁽⁴⁾	135	161	296	218.5	23	3	26	21.3	27	7	34	10.0
Total Non-Ladder Faculty	145	169	314	233.0	36	5	41	35.8	27	7	34	10.0
TOTAL REGULAR FACULTY	619	341	960	860.3	174	46	220	207.4	66	21	87	55.5
Adjunct and Other Affiliated Faculty ⁽⁵⁾	-	-	-	-	2	-	2	2.0	31	24	55	15.4
Visiting Faculty	39	11	50	37.9	-	-	-	-	2	1	3	1.3
Research and Academic Support ⁽⁶⁾	61	25	86	81.6	4	6	10	9.5	1	1	2	1.5
TOTAL FACULTY	719	377	1,096	979.9	180	52	232	218.9	100	47	147	73.7
Divinity												
Professor, Tenured ⁽¹⁾	16	8	24	17.8	14	9	23	22.3	49	5	54	41.8
Associate Professor, Tenure Track	1	-	1	1.0	1	6	7	7.0	10	-	10	10.0
Assistant Professor, Tenure Track ⁽²⁾	3	2	5	4.5	5	5	10	10.0	9	3	12	11.0
Total Ladder Faculty	20	10	30	23.3	20	20	40	39.3	68	8	76	62.8
Professor of Practice, Non-Ladder ⁽³⁾	2	4	6	4.8	5	-	5	4.6	2	-	2	1.0
Other Instructional Faculty, Non-Ladder ⁽⁴⁾	6	6	12	5.4	10	20	30	22.4	5	2	7	4.8
Total Non-Ladder Faculty	8	10	18	10.2	15	20	35	27.0	7	2	9	5.8
TOTAL REGULAR FACULTY	28	20	48	33.5	35	40	75	66.3	75	10	85	68.5
Adjunct and Other Affiliated Faculty ⁽⁵⁾	12	9	21	9.3	-	-	-	-	-	-	-	-
Visiting Faculty	9	5	14	10.5	1	2	3	2.3	-	1	1	0.5
Research and Academic Support ⁽⁶⁾	6	10	16	3.0	-	-	-	-	14	1	15	13.9
TOTAL FACULTY	55	44	99	56.3	36	42	78	68.6	89	12	101	83.0
Education												
Professor, Tenured ⁽¹⁾	14	9	23	22.3	14	9	23	22.3	49	5	54	41.8
Associate Professor, Tenure Track	1	6	7	7.0	1	6	7	7.0	10	-	10	10.0
Assistant Professor, Tenure Track ⁽²⁾	5	5	10	10.0	5	5	10	10.0	9	3	12	11.0
Total Ladder Faculty	20	20	40	39.3	20	20	40	39.3	68	8	76	62.8
Professor of Practice, Non-Ladder ⁽³⁾	5	-	5	4.6	5	-	5	4.6	2	-	2	1.0
Other Instructional Faculty, Non-Ladder ⁽⁴⁾	10	20	30	22.4	10	20	30	22.4	5	2	7	4.8
Total Non-Ladder Faculty	15	20	35	27.0	15	20	35	27.0	7	2	9	5.8
TOTAL REGULAR FACULTY	35	40	75	66.3	35	40	75	66.3	75	10	85	68.5
Adjunct and Other Affiliated Faculty ⁽⁵⁾	-	-	-	-	-	-	-	-	-	-	-	-
Visiting Faculty	1	2	3	2.3	1	2	3	2.3	-	1	1	0.5
Research and Academic Support ⁽⁶⁾	-	-	-	-	-	-	-	-	14	1	15	13.9
TOTAL FACULTY	36	42	78	68.6	36	42	78	68.6	89	12	101	83.0
Engineering												
Professor, Tenured ⁽¹⁾	55	16	71	68.3	63	13	76	74.0	55	16	71	68.3
Associate Professor, Tenure Track	20	14	34	31.0	-	-	-	-	20	14	34	31.0
Assistant Professor, Tenure Track ⁽²⁾	23	16	39	29.7	3	4	7	7.0	23	16	39	29.7
Total Ladder Faculty	98	46	144	129.0	66	17	83	81.0	98	46	144	129.0
Professor of Practice, Non-Ladder ⁽³⁾	-	-	-	-	-	-	-	-	-	-	-	-
Other Instructional Faculty, Non-Ladder ⁽⁴⁾	35	19	54	42.7	45	27	72	22.4	35	19	54	42.7
Total Non-Ladder Faculty	35	19	54	42.7	45	27	72	22.4	35	19	54	42.7
TOTAL REGULAR FACULTY	133	65	198	171.7	111	44	155	103.4	133	65	198	171.7
Adjunct and Other Affiliated Faculty ⁽⁵⁾	7	5	12	3.8	1	-	1	0.0	7	5	12	3.8
Visiting Faculty	1	-	1	1.0	37	12	49	6.7	1	-	1	1.0
Research and Academic Support ⁽⁶⁾	80	67	147	134.0	10	10	20	19.0	80	67	147	134.0
TOTAL FACULTY	221	137	358	310.5	159	66	225	129.1	221	137	358	310.5
Government												
Professor, Tenured ⁽¹⁾	38	10	48	40.8	63	13	76	74.0	55	16	71	68.3
Associate Professor, Tenure Track	9	5	14	14.0	-	-	-	-	20	14	34	31.0
Assistant Professor, Tenure Track ⁽²⁾	5	2	7	7.0	3	4	7	7.0	23	16	39	29.7
Total Ladder Faculty	52	17	69	61.8	66	17	83	81.0	98	46	144	129.0
Professor of Practice, Non-Ladder ⁽³⁾	7	1	8	7.2	-	-	-	-	-	-	-	-
Other Instructional Faculty, Non-Ladder ⁽⁴⁾	28	14	42	38.9	45	27	72	22.4	35	19	54	42.7
Total Non-Ladder Faculty	35	15	50	46.1	45	27	72	22.4	35	19	54	42.7
TOTAL REGULAR FACULTY	87	32	119	107.9	111	44	155	103.4	133	65	198	171.7
Adjunct and Other Affiliated Faculty ⁽⁵⁾	11	4	15	10.8	1	-	1	0.0	7	5	12	3.8
Visiting Faculty	3	-	3	3.0	37	12	49	6.7	1	-	1	1.0
Research and Academic Support ⁽⁶⁾	-	-	-	-	10	10	20	19.0	80	67	147	134.0
TOTAL FACULTY	101	36	137	121.7	159	66	225	129.1	221	137	358	310.5
Law												
Professor, Tenured ⁽¹⁾	63	13	76	74.0	63	13	76	74.0	55	16	71	68.3
Associate Professor, Tenure Track	-	-	-	-	-	-	-	-	20	14	34	31.0
Assistant Professor, Tenure Track ⁽²⁾	3	4	7	7.0	3	4	7	7.0	23	16	39	29.7
Total Ladder Faculty	66	17	83	81.0	66	17	83	81.0	98	46	144	129.0
Professor of Practice, Non-Ladder ⁽³⁾	-	-	-	-	-	-	-	-	-	-	-	-
Other Instructional Faculty, Non-Ladder ⁽⁴⁾	45	27	72	22.4	45	27	72	22.4	35	19	54	42.7
Total Non-Ladder Faculty	45	27	72	22.4	45	27	72	22.4	35	19	54	42.7
TOTAL REGULAR FACULTY	111	44	155	103.4	111	44	155	103.4	133	65	198	171.7
Adjunct and Other Affiliated Faculty ⁽⁵⁾	1	-	1	0.0	1	-	1	0.0	7	5	12	3.8
Visiting Faculty	37	12	49	6.7	37	12	49	6.7	1	-	1	1.0
Research and Academic Support ⁽⁶⁾	10	10	20	19.0	10	10	20	19.0	80	67	147	134.0
TOTAL FACULTY	159	66	225	129.1	159	66	225	129.1	221	137	358	310.5
Public Health												
Professor, Tenured ⁽¹⁾	55	16	71	68.3	63	13	76	74.0	55	16	71	68.3
Associate Professor, Tenure Track	20	14	34	31.0	-	-	-	-	20	14	34	31.0
Assistant Professor, Tenure Track ⁽²⁾	23	16	39	29.7	3	4	7	7.0	23	16	39	29.7
Total Ladder Faculty	98	46	144	129.0	66	17	83	81.0	98	46	144	129.0
Professor of Practice, Non-Ladder ⁽³⁾	-	-	-	-	-	-	-	-	-	-	-	-
Other Instructional Faculty, Non-Ladder ⁽⁴⁾	35	19	54	42.7	45	27	72	22.4	35	19	54	42.7
Total Non-Ladder Faculty	35	19	54	42.7	45	27	72	22.4	35	19	54	42.7
TOTAL REGULAR FACULTY	133	65	198	171.7	111	44	155	103.4	133	65	198	171.7
Adjunct and Other Affiliated Faculty ⁽⁵⁾	7	5	12	3.8	1	-	1	0.0	7	5	12	3.8
Visiting Faculty	1	-	1	1.0	37	12	49	6.7	1	-	1	1.0
Research and Academic Support ⁽⁶⁾	80	67	147	134.0	10	10	20	19.0	80	67	147	134.0
TOTAL FACULTY	221	137	358	310.5	159	66	225	129.1	221	137	358	310.5

See facing page for notes on inclusion criteria and University totals.

SOURCE: HARVARD DATA WAREHOUSE AND INTERNAL SURVEY OF EACH FACULTY

University Faculty: Fall 2007

	Head Count			Full-time Equivalent	Head Count			Full-time Equivalent	Head Count			Full-time Equivalent
	Men	Women	Total		Men	Women	Total		Men	Women	Total	
Medical (Quad-based)												
Professor, Tenured ⁽¹⁾	94	17	111	96.6	6	1	7	7.0	2	1	3	2.5
Associate Professor, Tenure Track	17	4	21	18.0	4	1	5	5.0	-	-	-	-
Assistant Professor, Tenure Track ⁽²⁾	22	13	35	28.8	6	3	9	9.0	-	-	-	-
Total Ladder Faculty	133	34	167	143.4	16	5	21	21.0	2	1	3	2.5
Dental (Quad-based)												
Professor of Practice, Non-Ladder ⁽³⁾	-	-	-	-	-	-	-	-	-	-	-	-
Other Instructional Faculty, Non-Ladder ⁽⁴⁾	54	44	98	57.5	24	17	41	38.3	7	3	10	7.7
Total Non-Ladder Faculty	54	44	98	57.5	24	17	41	38.3	7	3	10	7.7
TOTAL REGULAR FACULTY	187	78	265	200.9	40	22	62	59.3	9	4	13	10.2
Other Units⁽⁷⁾												
Adjunct and Other Affiliated Faculty ⁽⁵⁾	-	-	-	-	-	-	-	-	-	-	-	-
Visiting Faculty ⁽⁸⁾	-	-	-	-	-	-	-	-	-	-	-	-
Research and Academic Support ⁽⁶⁾	11	6	17	11.0	-	-	-	-	2	1	3	2.5
TOTAL FACULTY	198	84	282	211.9	40	22	62	59.3	11	5	16	12.7

University Totals⁽⁹⁾

Professor, Tenured ⁽¹⁾	795	201	996	924.3
Associate Professor, Tenure Track	137	65	202	192.6
Assistant Professor, Tenure Track ⁽²⁾	194	119	313	291.5
Total Ladder Faculty	1,126	385	1,511	1,408.4
Professor of Practice, Non-Ladder ⁽³⁾	39	15	54	46.6
Other Instructional Faculty, Non-Ladder ⁽⁴⁾	399	323	722	489.8
Total Non-Ladder Faculty	438	338	776	536.4
TOTAL REGULAR FACULTY	1,564	723	2,287	1,945
Adjunct and Other Affiliated Faculty ⁽⁵⁾	64	42	106	41.3
Visiting Faculty	92	32	124	63.1
Research and Academic Support ⁽⁶⁾	189	127	316	276.1
TOTAL FACULTY	1,909	924	2,833	2,325.3

Medical Faculty in Hospitals/Affiliates⁽¹⁰⁾ (excluded from University totals above)

Medical (Affiliates)

	Full Time		Part Time		Total
	Men	Women	Men	Women	
Professor	601	86	71	4	762
Associate Professor	842	273	127	30	1,272
Assistant Professor	1,040	592	252	109	1,993
Instructor	1,947	1,845	944	765	5,501
Other Instructional Faculty ⁽⁴⁾	140	59	201	103	503
Research and Academic Support ⁽⁶⁾	20	4	6	-	30
TOTAL FACULTY	4,590	2,859	1,601	1,011	10,061

Dental (Affiliates)

	Full Time		Part Time		Total
	Men	Women	Men	Women	
Professor	4	-	4	0	8
Associate Professor	6	4	4	0	14
Assistant Professor	4	2	17	5	28
Instructor	12	7	130	48	197
Other Instructional Faculty ⁽⁴⁾	5	2	21	9	37
Research and Academic Support ⁽⁶⁾	4	6	-	0	10
TOTAL FACULTY	35	21	-	62	294

(1) University Professors are included in the totals of the Schools in which they were originally appointed: Arts & Sciences (16), Business (two), Government (one), Law (two). Non-tenured Professors are included in the non-ladder counts as follows: Arts & Sciences (four), Business (nine), Design (one), Engineering (one), Government (one), Law (eight), Public Health (13).

(2) Assistant Professor counts for Business, Design and Government each include one Convertible Instructor.

(3) Professors of Practice are included in the tenured total for the Design School, but in the non-ladder totals for all other Schools.

(4) "Other instructional faculty" category includes non-tenured Professors, Benjamin Pierce Assistant Professors in the Faculty of Arts and Sciences (ten), Lecturers, Instructors, Preceptors, and other non-tenure track appointments that emphasize teaching.

(5) Adjunct Associate Professors at the Design School (four) are counted as tenure track faculty in this exhibit. Design Critics are included in the adjunct category.

(6) "Research and academic support" category includes Research Associates, Research Fellows, and other faculty with limited or no teaching responsibilities. Excludes Postdocs. Internal Postdocs are included in totals on Staff pages.

(7) Other units include Radcliffe Institute for Advanced Study, Memorial Church and University Health Services.

(8) Breakouts for visiting and adjunct faculty at Medical School not available at time of publication.

(9) University total excludes hospitals and other affiliated medical institutions. Faculty members are counted once at each school in which they hold an appointment. Sixty-nine faculty have appointments at more than one school and all of them belong to the "regular faculty" category. Counts include all faculty appointed as of October 31, 2007.

(10) At the medical affiliates, only full-time faculty are considered to be ladder faculty. Full-time Instructors are considered tenure-track in the affiliates.

SOURCE: HARVARD DATA WAREHOUSE AND INTERNAL SURVEY OF EACH FACULTY

Non-Faculty Staff in the Schools ⁽¹⁾

Counts are Full-Time Equivalent Figures as of October 31, 2007

University-Wide Totals	University Funding			Sponsored Funding			Non-Faculty Academic Staff ⁽²⁾			Grand Total
	Administrative & Professional	Clerical & Technical	Service & Trades	Administrative & Professional	Clerical & Technical	Subtotal	University Funding	Sponsored Funding	Subtotal	
	Faculties	3,560.9	3,066.2	68.5	362.9	490.6	7,549.2	478.9	780.5	
Allieds	279.9	173.3	53.2	5.5	0.2	512.2	19.2	3.0	22.2	534.4
Central Administration ⁽³⁾	646.6	383.1	56.0	2.5	1.0	1,089.1	-	-	-	1,089.1
Service Departments ⁽³⁾	717.1	374.2	849.5	-	-	1,940.8	8.5	-	8.5	1,949.3
Non-Departmental & Special ⁽⁴⁾	42.1	45.6	-	-	-	87.8	-	-	-	87.8
TOTAL	5,246.7	4,042.5	1,027.2	370.9	491.8	11,179.0	506.6	783.5	1,290.1	12,469.1

Faculties	University Funding			Sponsored Funding			Non-Faculty Academic Staff ⁽²⁾			Grand Total
	Administrative & Professional	Clerical & Technical	Service & Trades	Administrative & Professional	Clerical & Technical	Subtotal	University Funding	Sponsored Funding	Subtotal	
	Faculty of Arts and Sciences ⁽⁵⁾	685.9	698.5	0.2	65.1	81.5	1,531.2	269.5	204.3	
Athletics	115.2	25.3	-	-	-	140.5	18.0	-	18.0	158.5
College Library	247.9	259.8	-	-	-	507.7	-	-	-	507.7
Division of Continuing Education	72.9	65.7	-	-	-	138.6	-	-	-	138.6
GSAS	23.5	22.7	-	-	-	46.2	-	-	-	46.2
College Life & Student Dorms	118.4	67.3	-	-	-	185.7	-	-	-	185.7
Museums ⁽⁶⁾	69.1	85.2	-	-	8.0	162.3	4.1	13.2	17.3	179.6
Yenching	6.0	2.0	-	-	-	8.0	-	-	-	8.0
Subtotal	1,338.9	1,226.5	0.2	65.1	89.5	2,720.2	291.6	217.5	509.0	3,229.2
SEAS ⁽⁷⁾	52.3	55.6	9.8	28.0	7.2	152.9	30.2	63.7	93.9	246.8
Business	477.4	282.8	-	-	-	760.2	-	-	-	760.2
Publishing Division	273.9	14.0	-	-	-	287.9	-	-	-	287.9
Subtotal	751.3	296.8	-	-	-	1,048.1	-	-	-	1,048.1
Dental	26.1	64.4	-	1.3	2.0	93.8	2.0	6.3	8.3	102.1
Design	49.5	53.6	-	-	-	103.1	0.5	0.8	1.3	104.4
Divinity	56.3	46.4	-	-	0.2	102.9	0.2	2.5	2.7	105.6
Education	147.3	113.1	-	19.4	11.9	291.7	6.0	2.0	8.0	299.7
Government	226.5	187.1	-	22.8	12.7	449.1	24.8	11.5	36.3	485.5
Law	242.4	240.0	-	6.1	5.6	494.0	16.1	5.2	21.3	515.3
Medical	455.3	547.0	58.5	78.5	196.3	1,335.7	80.4	369.2	449.5	1,785.3
Public Health	166.4	206.0	-	141.6	165.1	679.1	26.1	101.9	128.0	807.1
Radcliffe Institute for Advanced Study	48.8	29.6	-	-	-	78.4	1.0	-	1.0	79.4
Subtotal Faculties	3,560.9	3,066.2	68.5	362.9	490.6	7,549.2	478.9	780.5	1,259.4	8,808.5

(1) Figures do not include temporary employees (except limited regular guards and custodians), LHT's (less-than-half-time), students or teaching fellows. Counts include only filled positions.

(2) Counts include Academic Clinical Fellows, Academic Department/Program Fellows, Coaching Assistants, Internal Post Docs, Teaching Assistants and Visiting Fellows.

(3) Core departments provide central functions of the University (accounts payable, HR benefits, etc.) and are supported through funds from the President, Faculties, and departments. Service departments derive their revenue on a fee-for-service basis from internal customers.

(4) Non-Departmental and Special include Signet Society, Credit Union, Harvard Student Agencies, and LASPAU.

(5) The Faculty of Arts and Sciences includes FTEs for Dumbarton Oaks. In addition Dumbarton Oaks has additional personnel on local data systems who are not reflected in the counts above.

(6) Museums include Museum of Comparative Zoology, Peabody Museum and Semitic Museum.

(7) SEAS refers to the School of Engineering and Applied Sciences.

Non-Faculty Staff in the Allied Institutions, Central Administration and Service Departments ⁽¹⁾

Counts are Full-Time Equivalent Figures as of October 31, 2007

	University Funding			Sponsored Funding			Non-Faculty Academic Staff ⁽²⁾			Grand Total
	Administrative & Professional	Clerical & Technical	Service & Trades	Administrative & Professional	Clerical & Technical	Subtotal	University Funding	Sponsored Funding	Subtotal	
Allied Institutions										
American Repertory Theatre	45.0	17.2	-	-	-	62.2	1.2	-	1.2	63.4
Arnold Arboretum	28.0	23.9	18.0	1.5	-	71.4	6.0	3.0	9.0	80.4
Art Museums	90.0	67.3	35.2	2.0	-	194.5	-	-	-	194.5
Harvard Magazine	16.9	2.8	-	-	-	19.6	-	-	-	19.6
Inter-Faculty Initiatives	9.0	6.4	-	-	-	15.4	5.0	-	5.0	20.4
Institute of Politics	7.2	10.0	-	-	-	17.2	7.0	-	7.0	24.2
Joint Center for Housing Studies	6.1	8.0	-	2.0	-	16.1	-	-	-	16.1
Memorial Church	6.6	8.4	-	-	-	15.0	-	-	-	15.0
Nieman Foundation	9.4	6.5	-	-	0.2	16.1	-	-	-	16.1
University Press	57.2	22.8	-	-	-	80.0	-	-	-	80.0
Villa I Tatti ⁽³⁾	4.6	-	-	-	-	4.6	-	-	-	4.6
Subtotal	279.9	173.3	53.2	5.5	0.2	512.2	19.2	3.0	22.2	534.4
Central Administration - Core and Service Departments ⁽⁴⁾										
<i>Core departments in bold, service departments in italics</i>										
President & Provost	79.3	53.3	1.0	-	-	133.7	-	-	-	133.7
<i>University Information Services</i>	217.3	88.5	-	-	-	305.8	-	-	-	305.8
<i>University Health Services</i>	146.7	120.8	-	-	-	267.5	8.5	-	8.5	276.0
VP Administration	21.0	10.0	-	-	-	31.0	-	-	-	31.0
<i>Dining Services</i>	77.5	21.9	356.2	-	-	455.5	-	-	-	455.5
<i>Faculty Club</i>	14.0	3.1	40.4	-	-	57.5	-	-	-	57.5
<i>Harvard Real Estate Services</i>	67.3	51.1	-	-	-	118.4	-	-	-	118.4
<i>University Operations Services</i>	128.3	52.9	452.9	-	-	634.1	-	-	-	634.1
Allston Development Group	21.7	6.6	-	-	-	28.3	-	-	-	28.3
VP Development & Alumni Affairs	100.6	72.1	-	-	-	172.7	-	-	-	172.7
<i>Fund Raising Campaigns</i>	66.1	35.9	-	-	-	101.9	-	-	-	101.9
VP Finance	177.9	104.1	-	-	-	282.0	-	-	-	282.0
VP General Counsel	52.7	30.5	55.0	-	-	138.2	-	-	-	138.2
VP Government, Community and Public Affairs	24.8	19.9	-	-	-	44.7	-	-	-	44.7
VP Human Resources	91.9	40.3	-	-	-	132.2	-	-	-	132.2
University Library	76.7	46.2	-	2.5	1.0	126.4	-	-	-	126.4
Subtotal	1,363.7	757.2	905.5	2.5	1.0	3,029.9	8.5	-	8.5	3,038.4
Non-Departmental & Special ⁽⁵⁾	42.1	45.6	-	-	-	87.8	-	-	-	87.8

(1) Figures do not include temporary employees (except limited regular guards and custodians), LHT's (less-than-half-time), students or teaching fellows. Counts include only filled positions.

(2) Counts include Academic Clinical Fellows, Academic Department/Program Fellows, Coaching Assistants, Internal Post Docs, Teaching Assistants and Visiting Fellows.

(3) Additional personnel on local data systems are not included in this count.

(4) Core departments provide central functions of the University (accounts payable, HR benefits etc.) and are supported through funds from the President, Faculties, and departments. Service departments derive their revenue on a fee-for-service basis from internal customers.

(5) Non-Departmental and Special include Signet Society, Credit Union, Harvard Student Agencies, and LASPAU.

SOURCE: HUMAN RESOURCE PERSONNEL/PAYROLL DATABASE

Tuition Charges: FY1988 - FY2008 ⁽¹⁾

Fiscal Year	College	GSAS	Business	Design	Divinity	Education	Government ⁽²⁾	Law	Medical/Dental ⁽³⁾	Public Health ⁽⁴⁾
1988	11,645	11,645	13,300	11,500	7,600	10,752	11,075	11,400	14,850	10,575
1989	12,310	12,310	14,250	12,250	8,100	11,440	11,800	12,307	15,750	11,470
1990	13,085	13,085	15,350	13,110	8,630	12,232	12,570	13,400	16,850	12,515
1991	13,960	13,960	16,400	14,300	9,200	13,152	13,390	14,475	18,030	13,570
1992	14,860	14,860	17,500	15,450	9,940	14,192	14,662	15,560	19,110	14,790
1993	15,870	15,870	18,550	16,650	10,540	15,044	15,690	16,730	20,257	15,675
1994	16,856	16,856	19,750	17,483	11,070	15,796	16,631	17,750	21,260	16,775
1995	17,851	17,851	21,000	18,360	11,630	16,664	17,710	19,080	22,300	17,770
1996	18,838	18,838	22,700	19,276	12,220	17,581	18,650	20,500	23,192	18,840
1997	19,770	19,770	23,840	20,240	12,830	18,460	19,770	21,700	24,150	19,800
1998	20,600	20,600	25,000	21,252	13,480	19,476	20,720	22,800	25,200	20,890
1999	21,342	21,342	26,260	22,208	14,160	20,430	21,656	23,900	26,000	21,895
2000	22,054	22,054	27,250	23,163	14,870	21,410	22,520	25,000	27,000	22,950
2001	22,694	22,694	28,500	24,159	15,620	22,600	23,400	26,000	28,000	23,980
2002	23,457	23,370	30,050	25,195	16,400	23,720	24,320	27,500	29,000	25,050
2003	24,630	24,630	31,800	26,330	17,220	25,144	26,488	29,500	30,500	26,300
2004	26,066	26,066	33,650	27,910	18,080	26,628	28,580	31,250	32,000	27,670
2005	27,448	27,448	35,600	29,500	18,984	28,092	30,272	33,120	34,250	29,300
2006	28,752	28,752	37,500	30,916	19,920	29,360	31,752	35,100	35,800	30,620
2007	30,275	30,275	39,600	32,152	20,712	30,544	33,276	37,100	37,200	31,800
2008	\$31,456	\$31,456	\$41,900	\$33,438	\$21,544	\$31,696	\$34,807	\$39,325	\$38,600	\$34,085

Average Annual Growth Rates

	College	GSAS	Business	Design	Divinity	Education	Government	Law	Medical/Dental	Public Health
20 YEAR	5.1%	5.1%	5.9%	5.5%	5.3%	5.6%	5.9%	6.4%	4.9%	6.0%
10 YEAR	4.3%	4.3%	5.3%	4.6%	4.8%	5.0%	5.3%	5.6%	4.4%	5.0%
5 YEAR	5.0%	5.0%	5.7%	4.9%	4.6%	4.7%	5.6%	5.9%	4.8%	5.3%
1 YEAR	3.9%	3.9%	5.8%	4.0%	4.0%	3.8%	4.6%	6.0%	3.8%	7.2%

(1) All amounts exclude the University Health Service fee.

(2) For FY03 and FY04, the School of Government implemented two tuition rate increases: one for first-year students (shown above) and one for returning students (FY03 is \$25,440 and FY04 is \$27,704).

(3) Dental School tuition is \$35,790 for FY06 and \$26,050 for FY99.

(4) Beginning in FY08, HSPH implemented different full-time tuition amounts for one-year programs (MPH, MS 1-year) and multiple-year programs (MS 2-year and DS). Amount shown in table is for one-year programs. Amount charged for multiple-year programs was \$32,080 in FY08.

SOURCE: ANNUAL TUITION PROPOSALS APPROVED BY THE CORPORATION.

Comparison of Undergraduate Tuition and Fees at Harvard and Peer Institutions⁽¹⁾

Ranked in descending order for FY2008

Institution	Actual		Change FY2007 - 2008		Notes	
	FY2007	FY2008	Percent	Nominal	FY2007	FY2008
Columbia Total	\$44,812	\$47,161	5.2%	\$2,349		
Tuition	34,376	36,290	5.6%	\$1,914		
Mandatory Fees	788	934	18.5%	\$146	Student Life Fee: \$788	Student Life Fee: \$934
Room & Board	9,648	9,937	3.0%	\$289		
Chicago Total	\$44,613	\$47,007	5.4%	\$2,394		
Tuition	33,819	35,673	5.5%	\$1,854		
Mandatory Fees	186	195	4.8%	\$9	Activity Fee: \$186	Activity Fee: \$195
Room & Board	10,608	11,139	5.0%	\$531		
UPenn Total	\$44,212	\$46,450	5.1%	\$2,238		
Tuition	30,850	32,486	5.3%	\$1,636	General Fee: \$2,766	General Fee: \$2,932
Mandatory Fees	3,558	3,756	5.6%	\$198	Tech Fee: \$560	Tech Fee: \$582
Room & Board	9,804	10,208	4.1%	\$404	Rec Fee: \$232	Rec Fee: \$242
Cornell Total	\$43,757	\$45,971	5.1%	\$2,214		
Tuition	32,800	34,600	5.5%	\$1,800		
Mandatory Fees	181	181	0.0%	\$0	Activity Fee: \$181	Activity Fee: \$181
Room & Board	10,776	11,190	3.8%	\$414		
Brown Total	\$43,754	\$45,948	5.0%	\$2,194		
Tuition	34,474	36,196	5.0%	\$1,722		
Mandatory Fees	146	146	0.0%	\$0	Activity Fee: \$146	Activity Fee: \$146
Room & Board	9,134	9,606	5.2%	\$472		
Stanford Total	\$43,631	\$45,897	5.2%	\$2,266		
Tuition	32,994	34,800	5.5%	\$1,806	Associated Students of Stanford Univ. \$270	Associated Students of Stanford Univ. \$289
Mandatory Fees	270	289	7.0%	\$19		
Room & Board	10,367	10,808	4.3%	\$441		
Harvard Total	\$43,655	\$45,620	4.5%	\$1,965		
Tuition	31,665	32,882	3.8%	\$1,217	Student Services Fee: \$2,044	Student Services Fee: \$2,116
Mandatory Fees	2,044	2,116	3.5%	\$72		
Room & Board	9,946	10,622	6.8%	\$676		
Dartmouth Total	\$43,341	\$45,483	4.9%	\$2,142		
Tuition	33,297	34,965	5.0%	\$1,668		
Mandatory Fees	204	213	4.4%	\$9	Activity Fee: \$204	Activity Fee: \$213
Room & Board	9,840	10,305	4.7%	\$465		
MIT Total	\$43,550	\$45,386	4.2%	\$1,836		
Tuition	33,400	34,750	4.0%	\$1,350		
Mandatory Fees	200	236	18.0%	\$36	Activity Fee: \$200	Activity Fee: \$236
Room & Board	9,950	10,400	4.5%	\$450		
Yale Total	\$43,050	\$45,000	4.5%	\$1,950		
Tuition	33,030	34,530	4.5%	\$1,500		
Room & Board	10,020	10,470	4.5%	\$450		
Princeton Total⁽²⁾	\$42,870	\$44,675	4.2%	\$1,805	Res. College Fee: \$570	Res. College Fee: \$595
Tuition	33,000	33,000	0.0%	\$0	(Fresh, Soph & some Jr.)	(Fresh, Soph & some Jr.)
Mandatory Fees	670	695	3.7%	\$25	Class Dues: \$40	Class Dues: \$40
Room & Board	9,200	10,980	19.3%	\$1,780	Activity Fee: \$60	Activity Fee: \$60

(1) For comparative purposes, the health services fee is included in the tuition amounts shown for all schools, with the following exception:

Cornell's health fee (\$1,500 in FY07 and \$1,434 in FY08), is optional and excluded.

(2) Princeton does not include its mandatory fees as part of its announced package. The mandatory fees have been included in the FY07 and FY08 totals for consistent comparison.

SOURCE: INTERNAL SURVEY

Undergraduate Tuition Over Time: FY1988 - FY2008

Fiscal Year	Undergraduate Package						Economic Indicators ⁽¹⁾					
	Health Services			Student Services			U.S. CPI-U	Boston CPI-U	GDP IP Deflator (2000=100)	HEPI (1983=100)	Disposable Personal Income	Median Family Income Ages 45-54
	Tuition	Fee	Room	Board	Fee	Total						
1988	11,645	370	2,065	2,145	875	17,100	115.8	120.2	73.2	126.2	14,241	41,413
1989	12,310	405	2,400	2,145	950	18,210	121.2	127.8	75.7	132.8	15,297	42,192
1990	13,085	460	2,560	2,275	1,015	19,395	127.0	134.3	78.6	140.8	16,257	46,101
1991	13,960	490	2,700	2,425	1,080	20,655	133.9	142.3	81.6	148.1	17,131	47,164
1992	14,860	550	2,900	2,620	1,150	22,080	138.2	146.6	84.4	153.4	17,609	49,606
1993	15,870	584	3,075	2,765	1,220	23,514	142.5	151.1	86.4	157.9	18,494	50,079
1994	16,856	614	3,225	2,910	1,275	24,880	146.2	153.5	88.4	163.3	18,872	52,034
1995	17,851	634	3,370	3,040	1,335	26,230	150.4	156.7	90.3	168.3	19,555	54,379
1996	18,838	634	3,510	3,200	1,393	27,575	154.5	160.6	92.1	173.3	20,287	55,029
1997	19,770	654	3,659	3,336	1,477	28,896	158.9	165.7	93.9	178.6	21,091	57,161
1998	20,600	666	3,808	3,470	1,536	30,080	161.7	169.6	95.4	184.9	21,940	59,959
1999	21,342	686	3,940	3,574	1,590	31,132	164.5	173.2	96.5	189.1	23,161	61,833
2000	22,054	711	4,072	3,685	1,642	32,164	169.3	179.3	97.9	196.9	23,968	65,303
2001	22,694	745	4,190	3,792	1,689	33,110	175.1	187.6	100.0	206.5	25,472	68,082
2002	23,457	816	4,331	3,919	1,746	34,269	178.2	193.3	102.4	215.0	26,235	68,114
2003	24,630	1,020	4,461	4,041	1,798	35,950	182.1	200.0	104.2	221.2	27,167	69,180
2004	26,066	1,142	4,706	4,162	1,852	37,928	186.1	207.0	106.4	231.5	28,053	70,149
2005	27,448	1,264	4,974	4,286	1,908	39,880	191.7	211.8	109.5	239.8	29,563	71,002
2006	28,752	1,370	5,148	4,430	1,975	41,675	199.0	220.1	113.0	251.8	30,677	72,881
2007	30,275	1,390	5,328	4,618	2,044	43,655	204.1	225.0	116.6	260.3	32,183	75,692
2008	\$31,456	\$1,426	\$5,856	\$4,766	\$2,116	\$45,620	210.1	232.2	119.7	270.8	\$33,689	\$77,864

Average Annual Growth Rates

	Undergraduate Package						Economic Indicators ⁽¹⁾					
	Health Services			Student Services			U.S. CPI-U	Boston CPI-U	GDP IP Deflator (1996=100)	HEPI (1983=100)	Disposable Personal Income	Median Family Income Ages 45-54
	Tuition	Fee	Room	Board	Fee	Total						
20 YEAR	5.1%	7.0%	5.3%	4.1%	4.5%	5.0%	3.0%	3.3%	2.5%	3.9%	4.4%	3.2%
10 YEAR	4.3%	7.9%	4.4%	3.2%	3.3%	4.3%	2.7%	3.2%	2.3%	3.9%	4.4%	2.6%
5 YEAR	5.0%	6.9%	5.6%	3.4%	3.3%	4.9%	2.9%	3.0%	2.8%	4.1%	4.4%	2.4%
1 YEAR	3.9%	2.6%	9.9%	3.2%	3.5%	4.5%	2.9%	3.2%	2.7%	4.0%	4.7%	2.9%

(1) Economic indicators are averages of all index figures for a given year. CPI-U, Boston CPI-U and HEPI are based on the fiscal year. All other indices are based on the most recent calendar year.

CY08 MFI is projected at 2.9% over the prior year based on the MFI compounded annual growth rate for the previous ten years.

FY08 HEPI projection is based on CPI-U forecasts plus 5-year average spread between CPI-U and HEPI.

FY08 Boston CPI-U projection is based on CPI-U forecasts plus 5-year average spread between CPI-U and CPI-Boston.

FY08 CPI-U projection is average of forecasts from the Survey of Professional Forecasters (SPF) and the Congressional Budget Office (CBO).

SOURCE: BUREAU OF LABOR STATISTICS, BUREAU OF ECONOMIC ANALYSIS AND ECONOMIC INDICATORS PUBLICATION.

Degree Student Financial Assistance: FY2007⁽¹⁾

Expressed in thousands of dollars

GRANTS

	Other			Total	% of Total Aid for School
	Institutional	Federal	Outside		
College	\$92,015	\$6,621	\$10,297	\$108,933	79.7%
GSAS	81,412	16,809	11,654	109,874	75.0%
Business	18,594	42	2,325	20,961	29.3%
Dental	825	57	91	973	11.4%
Design	5,560	-	623	6,182	39.3%
Divinity	6,751	21	169	6,942	57.5%
Education	9,685	311	2,212	12,207	50.8%
Government	12,427	1,411	7,108	20,946	55.7%
Law	14,647	207	2,316	17,170	24.4%
Medical	9,896	2,181	2,788	14,866	49.6%
Public Health	6,383	2,901	2,731	12,015	62.8%
Extension	521	152	75	748	19.4%
TOTAL	\$258,715	\$30,713	\$42,389	\$331,817	57.6%

Grants

Institutional grants are from University unrestricted and restricted monies.

Federal grants include all Federal programs in each school including programs such as the Pell grant, SEOG or graduate training grants.

Outside grants include state and private support of students. In some schools, these numbers may include corporate sponsorship or other sponsored billing.

LOANS

	Other			Total	% of Total Aid for School
	Institutional	Federal	Outside		
College ⁽²⁾	\$3,840	\$9,865	\$7,571	\$21,277	15.6%
GSAS	30	1,832	330	2,192	1.5%
Business	1,664	20,839	28,110	50,614	70.7%
Dental	156	7,149	247	7,552	88.5%
Design	-	7,658	1,332	8,990	57.1%
Divinity	-	4,294	91	4,385	36.3%
Education	54	10,031	1,158	11,243	46.8%
Government	223	11,569	3,585	15,377	40.9%
Law	4,724	35,115	13,283	53,122	75.5%
Medical	3,252	11,355	470	15,077	50.3%
Public Health	28	5,432	1,613	7,072	36.9%
Extension	-	2,622	493	3,115	80.6%
TOTAL	\$13,971	\$127,762	\$58,283	\$200,016	34.7%

Loans

Institutional loans are made to students from University capital without Federal guarantee.

Federal loan programs may involve capital from Harvard, or other private or Federal sources, loaned under Federal sponsorship such as Perkins, Direct Loans and FFEL programs.

Outside loans include private capital loaned to students or parents. It excludes personal loans.

EMPLOYMENT

	Other		Total	% of Total Aid for School	TOTAL Grant, Loans & Employment
	Work-Study (CWSP)	Term			
College	\$2,832	\$3,719	\$6,551	4.8%	\$136,760
GSAS	396	33,989	34,385	23.5%	146,451
Business	-	-	-	0.0%	71,575
Dental	10	-	10	0.1%	8,535
Design	389	184	573	3.6%	15,745
Divinity	753	-	753	6.2%	12,079
Education	595	-	595	2.5%	24,045
Government	219	1,059	1,278	3.4%	37,601
Law	-	112	112	0.2%	70,404
Medical	43	-	43	0.1%	29,985
Public Health	59	-	59	0.3%	19,146
Extension	-	-	-	0.0%	3,863
TOTAL	\$5,295	\$39,062	\$44,357	7.7%	\$576,190

Employment

Work-Study is a Federally-sponsored partnership with colleges and universities to provide students with the opportunity to work while in school.

Other term earnings reflect on-campus earnings by students who are not part of the work-study program. Jobs include casual employment (to the extent known), teaching fellowships, research assistantships and resident tutors.

(1) Amounts do not include the Business School, Law School, Medical School or the School of Government funding for graduates in the Low Income Protection Plan/Loan Repayment Assistance Programs.

(2) College total for loans includes \$14,225,085 in PLUS Loans and other Parental Loans.

SOURCE: INTERNAL SURVEY

Federal Sponsored Research: FY2006- FY2007

Expressed in thousands of dollars

	FY2006			FY2007			Change in Total Exp. 2006/2007	FY2007 Eff. Indirect Cost Rate ⁽²⁾
	Direct	Indirect	Total	Direct	Indirect	Total		
	Costs	Costs	Costs	Costs	Costs	Costs		
ACADEMIC DEPARTMENTS⁽¹⁾								
FAS								
Arts & Sciences	\$71,663	\$30,189	\$101,852	\$61,102	\$25,381	\$86,483	(15.1%)	41.5%
Division of Engineering and Applied Sciences	22,281	9,847	32,128	22,269	10,260	32,529	1.2%	46.1%
FAS - Academic Support	200	36	236	177	31	208	(11.9%)	17.5%
FAS Subtotal	\$94,144	\$40,072	\$134,216	\$83,548	\$35,672	\$119,221	(11.2%)	42.7%
School of Dental Medicine	4,891	1,703	6,595	4,781	1,839	6,620	0.00	38.5%
School of Design	61	14	75	66	12	78	0.04	18.7%
Divinity School	27	-	27	13	-	13	(0.50)	0.0%
Graduate School of Education	4,781	988	5,770	3,523	872	4,395	(0.24)	24.8%
JFK School of Government	9,598	2,159	11,757	7,590	1,757	9,347	(0.20)	23.1%
Law School	198	35	234	252	77	329	0.41	30.5%
Medical School	138,603	58,374	196,977	135,495	58,132	193,627	(0.02)	42.9%
School of Public Health	120,629	35,962	156,591	137,101	39,844	176,945	0.13	29.1%
Other Faculties Subtotal	\$278,788	\$99,235	\$378,026	\$288,820	\$102,533	\$391,353	3.5%	35.5%
Other Academic Departments⁽³⁾	\$400	\$128	\$528	\$354	\$125	\$478	(9.4%)	35.2%
Service and Other Departments⁽⁴⁾	\$833	\$90	\$923	\$178	\$26	\$203	(78.0%)	14.4%
GRAND TOTAL ⁽⁵⁾	\$374,166	\$139,526	\$513,692	\$372,900	\$138,355	\$511,255	(0.5%)	37.1%

(1) The following Academic Departments had zero FY2006 and FY2007 federal sponsored research expenditures and are therefore excluded from the table above: College Life, Athletics, GSAS; and Business School.

(2) The effective rate is the indirect costs as a percentage of total direct costs.

(3) Includes Arnold Arboretum, Harvard University Art Museums, and Joint Center for Housing Studies.

(4) Includes Central Administration, University Library and University Health Services.

(5) Totals include both Federal and Federal Once-Removed (Federal Once-Removed total cost for FY2006 is \$60,414 and for FY2007 is \$59,403). Totals exclude financial aid and agency funds.

SOURCE: OFFICE FOR SPONSORED PROGRAMS - ANNUAL REPORT

Federal Research by Agency: FY2006 - FY2007

Expressed in thousands of dollars

	FY2006	FY2007	% Change	FY2007 Total as % of Federal Total
Department of Health & Human Services				
National Institutes of Health	\$362,878	\$344,832	(5.0%)	67.4%
Other DHHS	41,560	66,529	60.1%	13.0%
Subtotal	\$404,438	\$411,361	1.7%	80.5%
Department of Defense				
Defense Advanced Research Projects Agency ⁽¹⁾	6,210	7,178	15.6%	1.4%
Department of the Army	5,907	5,810	(1.7%)	1.1%
Department of the Navy	5,905	3,436	(41.8%)	0.7%
Department of the Air Force ⁽²⁾	5,037	3,028	(39.9%)	0.6%
Subtotal	\$23,059	\$19,451	(15.6%)	3.8%
National Science Foundation	38,162	35,886	(6.0%)	7.0%
Department of Energy	11,747	12,037	2.5%	2.4%
Nat'l. Aeronautics & Space Administration	9,324	10,170	9.1%	2.0%
Agency for International Development	7,598	5,963	(21.5%)	1.2%
Department of Education	6,242	4,157	(33.4%)	0.8%
Environmental Protection Agency	5,983	5,011	(16.2%)	1.0%
Department of State	1,796	1,658	(7.7%)	0.3%
Department of Commerce	1,164	1,258	8.1%	0.2%
Nat'l. Endowment for the Humanities	727	420	(42.2%)	0.1%
Department of Veterans Affairs	561	974	73.6%	0.2%
Department of Transportation	423	669	58.0%	0.1%
Federal Emergency Management Agency	414	-	(100.0%)	0.0%
Department of Interior	395	466	18.1%	0.1%
Department of Justice	334	89	(73.3%)	0.0%
Smithsonian Institution	321	242	(24.5%)	0.0%
Department of Housing and Urban Development	207	136	(34.1%)	0.0%
Department of Agriculture	166	99	(40.2%)	0.0%
Neighborhood Reinvestment Corporation	162	362	123.7%	0.1%
Library of Congress	80	249	210.6%	0.0%
Department of the Treasury	70	14	(79.4%)	0.0%
National Endowment for the Arts	60	-	(100.0%)	0.0%
Department of Homeland Security	49	21	(57.3%)	0.0%
General Services Administration	28	38	35.4%	0.0%
Fermi National Accelerator Laboratory	24	149	522.5%	0.0%
Medicare Payment Advisory Commission	6	146	2326.7%	0.0%
Central Intelligence Agency	-	142	-	0.0%
Other Federal Agencies	152	88	(42.1%)	0.0%
GRAND TOTAL⁽³⁾	\$513,692	\$511,255	(0.5%)	100.0%

(1) Includes Other - Department of Defense.

(2) Includes Air Force Office of Scientific Research

(3) Totals include both Federal and Federal Once-Removed (Federal Once-Removed total cost for FY2006 is \$60,414 and for FY2007 is \$59,403). Totals exclude financial aid and agency funds.

SOURCE: OFFICE FOR SPONSORED PROGRAMS - ANNUAL REPORT

Non-Federal Sponsored Research: FY2006 - FY2007

Expressed in thousands of dollars

	FY2006			FY2007			Change in Total Exp. 2006/2007	FY2007 Eff. Indirect Cost Rate ⁽²⁾
	Direct Costs	Indirect Costs	Total Costs	Direct Costs	Indirect Costs	Total Costs		
ACADEMIC DEPARTMENTS ⁽¹⁾								
FAS								
Arts & Sciences	\$16,987	\$1,442	\$18,429	\$17,933	\$1,829	\$19,762	7.2%	10.2%
Division of Engineering and Applied Sciences	2,644	277	2,922	3,389	454	3,843	31.5%	13.4%
FAS Subtotal	\$19,631	\$1,719	\$21,351	\$21,322	\$2,283	\$23,605	10.6%	10.7%
School of Dental Medicine	286	65	351	541	106	647	84.3%	19.5%
School of Design	341	57	398	234	29	263	(33.8%)	12.4%
Divinity School	483	45	527	407	63	469	(10.9%)	15.5%
Graduate School of Education	5,966	559	6,525	6,597	718	7,314	12.1%	10.9%
JFK School of Government	12,536	1,817	14,354	15,946	2,144	18,091	26.0%	13.4%
Law School	3,589	175	3,764	3,197	226	3,423	(9.1%)	7.1%
Medical School	25,727	3,454	29,181	28,412	3,560	31,972	9.6%	12.5%
School of Public Health	27,637	3,283	30,920	26,882	3,559	30,440	(1.6%)	13.2%
Radcliffe Institute for Advanced Study	486	3	489	103	1	104	(78.7%)	0.9%
Other Faculties Subtotal	\$77,051	\$9,458	\$86,509	\$82,318	\$10,406	\$92,724	7.2%	12.6%
Other Academic Departments ⁽³⁾	\$1,233	\$85	\$1,318	\$1,829	\$137	\$1,966	49.2%	7.5%
Service and Other Departments ⁽⁴⁾	\$1,086	\$1	\$1,087	\$580	\$3	\$583	(46.4%)	0.6%
GRAND TOTAL ⁽⁵⁾	\$99,000	\$11,264	\$110,265	\$106,049	\$12,829	\$118,878	7.8%	12.1%

(1) The following Academic Departments had zero FY2006 and FY2007 non-federal sponsored research expenditures and are therefore excluded from the table above: College Library; College Life, Athletics, GSAS; and Business School.

(2) The effective rate is the indirect costs as a percentage of total direct costs.

(3) Includes Arnold Arboretum, Harvard University Art Museums, Joint Center for Housing Studies, Nieman Foundation, and Villa I Tatti.

(4) Includes Central Administration, Memorial Church, President's Initiatives, University Library, University Health Services, and University Operations Services.

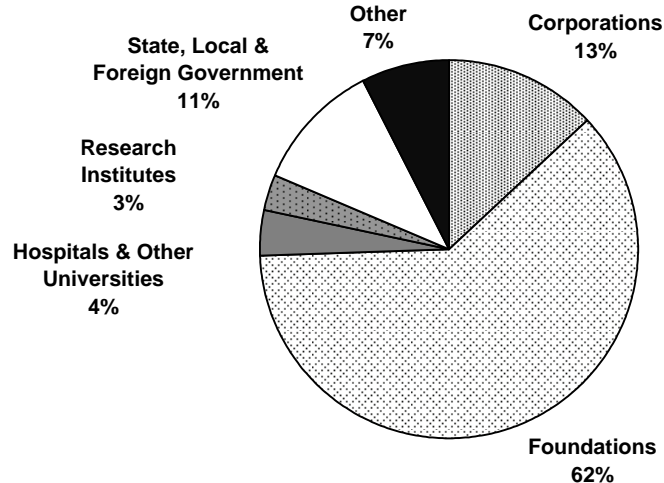
(5) Total excludes financial aid expenditures and agency funds.

SOURCE: OFFICE FOR SPONSORED PROGRAMS - ANNUAL REPORT

Expenditures under Non-Federal Sponsored Research by Sponsor Source: FY2007

Expressed in thousands of dollars

	Corporations	Foundations	Hospitals & Other Universities	Research Institutes	State, Local, & Foreign Government	Other Sources	Total
FAS							
Faculty of Arts & Sciences	\$2,822	\$14,034	\$379	\$1,045	\$365	\$1,117	\$19,762
Division of Engineering and Applied Sciences	1,038	2,386	152	41	-	228	3,843
FAS Subtotal	\$3,860	\$16,420	\$531	\$1,086	\$365	\$1,345	\$23,605
School of Dental Medicine	206	350	23	-	1	67	647
School of Design	35	72	-	-	82	75	263
Divinity School	-	469	-	-	-	-	469
Graduate School of Education	157	6,196	35	-	107	819	7,314
JFK School of Government	1,205	9,544	187	386	4,583	2,185	18,091
Law School	-	3,263	40	20	-	99	3,423
Medical School	8,699	15,938	1,216	1,581	1,929	2,608	31,972
School of Public Health	1,426	18,009	2,505	751	6,067	1,681	30,440
Radcliffe Institute for Advanced Study	-	104	-	-	-	-	104
Other Faculties Subtotal	11,728	\$53,945	\$4,007	\$2,739	\$12,770	\$7,534	92,724
Other Academic Departments ⁽¹⁾	-	\$1,959	-	-	\$7	-	\$1,966
Service and Other Departments ⁽²⁾	-	\$583	-	-	-	-	\$583
GRAND TOTAL ⁽³⁾	\$15,588	\$72,906	\$4,537	\$3,825	\$13,142	\$8,879	\$118,878



(1) Includes Arnold Arboretum, Harvard University Art Museums, Joint Center for Housing Studies, Nieman Foundation, and Villa I Tatti.

(2) Includes Central Administration, Memorial Church, President's Initiatives, University Health Services, University Library and University Operations Services.

(3) Total excludes financial aid expenditures and agency funds.

SOURCE: OFFICE FOR SPONSORED PROGRAMS - ANNUAL REPORT

Historical Funding of Research by Sponsor

Expressed in thousands of dollars

Federal (Prime and Once-Removed)

	Fiscal Year				
	2003	2004	2005	2006	2007
National Institutes of Health	\$297,035	\$343,248	\$354,996	\$362,878	\$344,832
Other DHHS	22,714	24,621	46,193	41,560	66,529
National Science Foundation	30,437	37,525	38,157	38,162	35,886
Department of Defense	19,060	18,222	21,911	23,059	19,451
Department of Energy	10,701	12,897	12,901	11,747	12,037
Nat'l. Aeronautics & Space Administration	9,402	10,429	8,367	9,324	10,170
Agency for International Development	4,153	3,684	5,578	7,598	5,963
Environmental Protection Agency	4,077	4,513	5,972	5,983	5,011
Department of Education	6,096	5,393	6,890	6,242	4,157
Department of State	1,705	1,797	1,610	1,796	1,658
Department of Commerce	979	1,371	1,674	1,164	1,258
Other ⁽¹⁾	6,305	4,613	3,617	4,178	4,305
Federal Total	\$412,664	\$468,312	\$507,865	\$513,692	\$511,255

Non-Federal

	2003	2004	2005	2006	2007
Foundations	\$89,251	\$86,359	\$78,119	\$74,129	\$72,906
State, Local & Foreign Government	10,629	10,439	12,797	12,154	13,142
Corporations	9,916	10,084	11,058	9,147	15,588
Research Institutes	5,347	5,415	4,677	6,773	3,825
Other Sources	8,886	7,429	6,763	5,195	8,879
Hospitals & Other Universities	2,254	2,555	2,061	2,868	4,537
Non-Federal Total	\$126,284	\$122,281	\$115,475	\$110,266	\$118,878
GRAND TOTAL ⁽²⁾	\$538,948	\$590,593	\$623,340	\$623,958	\$630,133

Growth in Sponsored Projects

Expressed in millions of dollars

Fiscal Year	Expenditure Actual \$	% Change	Expressed	
			as FY07 \$	% Change in FY07 \$
2003	538.9	3.2%	604.1	1.0%
2004	590.6	9.6%	647.9	7.2%
2005	623.3	5.5%	663.9	2.5%
2006	624.0	0.1%	640.1	(3.6%)
2007	\$630.1	1.0%	\$630.1	(1.6%)

(1) Agencies listed on this exhibit are based on FY2007 expenditures. Information on agencies in prior years can be obtained from the Office for Sponsored Programs.

(2) Total excludes financial aid expenditures and agency funds.

SOURCE: OFFICE FOR SPONSORED PROGRAMS - ANNUAL REPORT

The Harvard University Library System

The Harvard University Library, founded in 1638, is the largest academic library in the world. Harvard's extensive collections serve as invaluable resources for students, faculty, and researchers. Holdings include over 15.9 million volumes, approximately 7.5 million photographs, and millions of manuscript pages, as well as recordings, maps, ephemera, and an exploding number of digital resources, all under the management of the 1,200 full-time-equivalent staff members in more than 80 individual libraries. Most libraries require a Harvard ID for admittance.

To locate books or other library materials, to find information on specific Harvard libraries, or to access the library catalogs, visit the Harvard Libraries web site at <http://lib.harvard.edu>.

Digital Collections at Harvard

Harvard University provides open, online access to a rich array of digital materials, including photographic collections, documents, musical scores, prints, drawings, historical maps, books, legal transcripts, diaries, manuscripts, and more. You can also find a growing number of subject-specific collections available online at <http://digitalcollections.harvard.edu>

Locating Digital Materials at Harvard

Visitors can use thousands of digital materials from the Harvard collections. While access to many licensed e-resources, such as journals, requires a Harvard ID and PIN, many other digital materials are open to all Internet users. Here are some places to start:

- **E-Research @ Harvard Libraries** is the University's online system for searching and finding e-resources of many kinds. <http://e-research.lib.harvard.edu>
- Use the **HOLLIS catalog** to locate not only digital collections, but some individual digital objects as well. Look for "Internet Links" in HOLLIS records or choose "Digital Resources" when you begin your HOLLIS search. <http://holliscatalog.harvard.edu>
- **VIA**, Harvard's Visual Information Access catalog, provides links to more than 270,000 individual images. <http://via.harvard.edu>

The Harvard University Library System

The many libraries at Harvard University comprise the largest academic library in the world, which is known broadly as the Harvard University Library. The Harvard University Library (HUL) is also a specific unit of Harvard's Central Administration.

<http://hul.harvard.edu>

HUL's mission is to collaborate with and coordinate the many independent parts of the Harvard library system to provide users with the best possible collections in all media, to make them as accessible as possible, and to preserve them for the future. HUL programs include:

- The **Harvard Depository** (HD), a high-density, offsite storage facility shared by the Harvard libraries. Research libraries and consortia worldwide have emulated its innovative design. <http://hul.harvard.edu/hd>
- The **Harvard-Google Project**, through which the University Library and Google are collaborating to bring a large number of Harvard's out-of-copyright library books to Internet users everywhere. <http://hul.harvard.edu/hgproject>
- The **Harvard University Archives** preserves and provides access to Harvard's historical records; gathers an accurate, authentic, and complete record of the life of the University; and promotes the highest standards of management for Harvard's current records. The collections are used by scholars of American social, intellectual, and academic history; by historians of Harvard, including University departments studying their own history; by students learning the methods of historical research; and by the general public. <http://hul.harvard.edu/huarc>
- HUL's **Office for Information Systems** (OIS) develops, implements, and maintains innovative and stable systems and services that support the academic and research mission of the University by providing integrated and coherent access to research materials and resources. <http://hul.harvard.edu/ois>
- Harvard's **Open Collections Program** (OCP) advances teaching and learning on historical topics by providing online access to selected, subject-specific historical resources. <http://ocp.hul.harvard.edu>
- The **Weissman Preservation Center** specializes in the conservation of the rarest of books, manuscripts, art on paper, photographs, and other flat objects, which are among the University's special collections. <http://preserve.harvard.edu>

Summary of Growth and Expenditures of the Harvard University Library, 2006-2007

	Collections			Expenditures (in \$000's) ⁽²⁾					
	Increase		Volumes & Pamphlets	Salaries & Wages	Cost of Retirement and Health Programs	Books and Other Library Materials	Binding	Other Library Costs	Total Expenditures
	Gross	Net ⁽¹⁾							
University Library (HUL) ⁽³⁾	\$3,427	\$3,427	\$123,023	\$7,310	\$2,425	\$7	\$1	\$8,700	\$18,443
Faculty of Arts & Sciences									
Central Collections	253,261	(25,526)	9,888,732	30,273	10,377	16,218	557	22,824	80,249
House Libraries	9,030	9,030	207,660	102	-	6	-	2	110
Departmental & Divisional Libraries	4,341	(11,328)	356,359	858	251	2,356	36	187	3,688
Special & Research Libraries	21,597	15,087	1,144,819	3,304	1,040	1,737	47	1,472	7,600
Graduate/Profess. School Libraries	55,393	31,907	4,245,082	19,168	6,301	9,353	405	9,196	44,423
Less Duplication	-	-	-	-	-	-	-	(7,118)	(7,118)
University Library Totals	\$347,049	\$22,597	\$15,965,675	\$61,015	\$20,394	\$29,677	\$1,046	\$35,263	\$147,395

(1) Net increase refers to the increase in volumes after accounting for replacement of previously owned volumes. Revised count of FY06 is 15,943,078.

(2) Slight difference in tables reported in the Annual Report due to rounding.

(3) Expenditures for Harvard Depository reflect operations but exclude the interest and amortization for the Depository of \$1,924,217.

SOURCE: HARVARD UNIVERSITY LIBRARY ANNUAL REPORT 2006-2007

Library Collections: FY2007

	Increase FY2007		Volumes & Pamphlets FY2007 ⁽¹⁾
	Gross	Net	
UNIVERSITY LIBRARY			
Harvard University Archives	3,316	3,316	122,216
Weissman Preservation Center	111	111	807
LIBRARIES OF THE FACULTY OF ARTS AND SCIENCES			
<i>HARVARD COLLEGE LIBRARY</i>			
Cabot, Godfrey Lowell, Science Library	5,609	2,293	276,838
Fine Arts Library	7,423	7,335	344,663
Fung Library	6,125	6,101	60,448
Harvard–Yenching Library	36,828	36,828	1,190,123
Houghton Library	3,577	3,577	490,902
Lamont Library	3,671	3,541	187,010
Littauer Library	0	(223,755)	209,661
Loeb, Eda Kuhn, Music Library	7,228	7,111	268,063
Quad Library	520	518	26,146
Social Sciences Program	23,748	(27,548)	145,241
Tozzer Library	4,622	4,563	255,500
Widener, Harry Elkins, Memorial Library	153,910	153,910	6,434,137
<i>HOUSE LIBRARIES ⁽²⁾</i>	9,030	9,030	207,660
<i>DEPARTMENTAL AND SPECIAL LIBRARIES ⁽³⁾</i>	4,341	(11,328)	356,359
SPECIAL, OFFICE, AND OTHER RESEARCH LIBRARIES			
Biblioteca Berenson	3,436	3,436	150,485
Botany Libraries (six total)	2,903	2,869	291,744
Career Reference Library	148	(23)	5,111
Development Office Library	12	16	5,331
Dumbarton Oaks Research Library	5,090	4,660	207,188
European Studies, Center for, Library	113	113	13,598
Gibb, Hamilton A. R., Islamic Seminar Library	12	12	7,668
Grossman Library for University Extension	274	65	5,396
Harvard Forest Library	0	(7,000)	13,000
Harvard University Property Information Resource Center	2	2	1,215
Hellenic Studies, Center for, Library	1,210	1,210	58,288
Mayr, Ernst, Library of the Museum of Comparative Zoology	6,544	6,544	304,072
Nieman Foundation/Kovach Collection (Journalism)	432	432	3,729
Parry, Milman, Collection of Oral Literature	0	0	0
Ukrainian Research Institute Reference Library	5	1,505	1,505
Wolbach, John G., Library (Astrophysics)	1,416	1,246	76,489
LIBRARIES OF THE OTHER GRADUATE AND PROFESSIONAL FACULTIES			
Harvard Business School: Baker Library	3,120	2,811	644,387
Harvard Design School: Frances Loeb Library	4,495	4,445	295,565
Harvard Divinity School: Andover– Harvard Theological Library	7,113	6,995	492,041
Harvard Graduate School of Education: Monroe C. Gutman Library	2,722	2,355	208,896
Harvard Law School Library	25,709	21,466	1,765,543
John F. Kennedy School of Government Library	2,356	(726)	57,852
Belfer Center for Science and International Affairs	50	50	5,050
Radcliffe Institute for Advanced Study: Arthur and Elizabeth Schlesinger Library on the History of Women in America	4,159	4,159	89,196
Schools of Medicine, Public Health, and Dental Medicine Francis A. Countway Library of Medicine	5,548	(9,686)	671,971
Henry Coe Meadow Library (New England Primate Research Center)	121	38	14,581
TOTAL UNIVERSITY COLLECTION	347,049	22,597	15,965,675

(1) Volumes and pamphlets for individual libraries include volumes transferred to the Depository. Totals reflect corrections in count.

(2) Includes Adams, Cabot, Currier, Dudley, Dunster, Eliot, Kirkland, Leverett, Lowell, Mather, Pforzheimer, Quincy, Winthrop.

(3) Includes Biological Laboratories Library; Birkhoff, George David, Mathematical Library; Chemistry and Chemical Biology Library; Child Memorial Library (English Department); History Departmental Library; History of Science Library; Life Sciences Student Affairs Library; Linguistics Library; McKay, Gordon, Library of Engineering and Applied Sciences and Blue Hill Meteorological Observatory Library; Medieval Studies Library; Near Eastern Languages and Civilizations Library; Paleography Library; Physics Research Library; Psychology Research Library; Raines, Franklin D. and Wendy F., Library in African American Studies; Robbins, Library of Philosophy; Robinson, Fred N., Celtic Seminar Library; Sanskrit Library; Smyth, Herbert Weir, Classical Library; and Social Relations/Sociology Library; Statistics Library.

Physical Plant: FY2007

The University owns and operates more than six hundred buildings of varying sizes and characteristics, spread over a wide geographic area. They encompass approximately 24.5 million gross square feet of space. The physical plant provides living space for students and faculty, research facilities to advance our base of knowledge, classroom and library spaces for the dissemination of knowledge, and space for administrative and support services.

Location ⁽¹⁾	Acres	Gross Square Footage ⁽²⁾ of Buildings (in 000's)	Principal Activity on Site
Cambridge, MA	225	13,951	Main Campus
Boston, MA	21	3,342	Medical & Dental Schools; School of Public Health
Boston (Allston)	360	5,278	Business School; University Publisher; Athletics, Other
Boston (Jamaica Plain)	233	54	Arnold Arboretum
Watertown MA	29	1,160	Arsenal Buildings
Weston, MA	69	11	Case Estates (Arnold Arboretum)
Somerville, MA	2	28	Affiliated Housing
Medford, MA	1		
Bedford, MA	79	11	Concord Field Station
Carlisle, MA	69		Concord Field Station
Concord, MA	605		Field Station (Museum of Comparative Zoology)
Marlborough, MA	43		Animal Research Center (NERPC)
Southborough, MA	87	226	Harvard Depository
Petersham, MA	2704	71	Harvard Forest (Forestry, Botany)
Hamilton, MA	99		Harvard Forest
Phillipston, MA	205		Harvard Forest
Royalston, MA	57		Harvard Forest
Harvard, MA	37	19	Agassiz Cottage (Observatory)
Shrewsbury, MA	6	16	Artemas Ward Homestead (Museum)
Kittery Point & Sutton Island, ME	n/a	12	Howells Memorial & Kendall Houses
Ledyard, CT	n/a	21	Red Top Crew Quarters
Washington, DC	16	198	Dumbarton Oaks & Center for Hellenic Studies
Florence, Italy	n/a	94	Villa I Tatti (Center for Italian Renaissance Studies)
Sardis, Turkey	n/a	8	HUAM Archaeological Site
TOTAL	4,947	24,501	

(1) In addition to locations listed above, Harvard has numerous smaller holdings.

(2) As of FY2007, square footage figures are reported according to National Center for Education Statistics Postsecondary Education Facilities Inventory and Classification Manual (FICM) standards. Therefore, values may differ from previous years.

SOURCE: HARVARD REAL ESTATE SERVICES

Physical Plant: FY2007

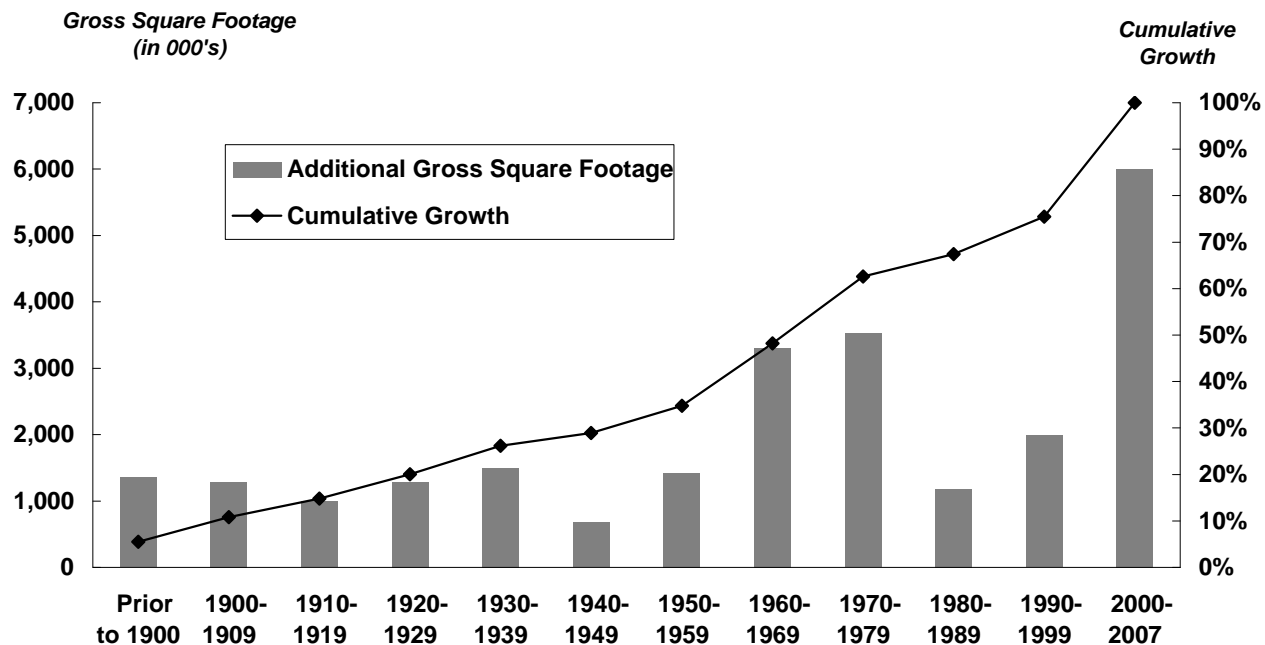
Building Ownership

	Number of Buildings	Gross Square Footage ⁽¹⁾	
		of Buildings (in 000's)	As a % of Total
FAS	255	8,723	35.6%
Engineering	5	337	1.4%
Business	33	1,478	6.0%
Dental	2	101	0.4%
Design	2	180	0.7%
Divinity	7	189	0.8%
Education	6	212	0.9%
Government	4	264	1.1%
Law	21	917	3.7%
Medical	28	2,690	11.0%
Radcliffe	15	294	1.2%
Public Health	7	589	2.4%
Real Estate	207	6,837	27.9%
Central Administration	54	1,690	6.9%
TOTAL	646	24,501	100.0%

Primary Uses

	Gross Square Footage	
	of Buildings (in 000's)	As a % of Total
Residential/Dormitory	6,955	28.4%
Office/Classroom	5,141	21.0%
Lab/Studio	4,758	19.4%
Library	1,538	6.3%
Assembly/Museum	1,136	4.6%
Support	2,072	8.5%
Commercial	1,911	7.8%
Athletic	871	3.6%
Health Care	120	0.5%
TOTAL	24,501	100.0%

Additions to the Physical Plant



(1) As of FY2007, square footage figures are reported according to National Center for Education Statistics Postsecondary Education Facilities Inventory and Classification Manual (FICM) standards. Therefore, values may differ from previous years.

SOURCE: HARVARD REAL ESTATE SERVICES

Summary of Environmental Performance at Harvard

Greenhouse Gas Emissions from Building Energy Use by Location: FY2007

	Total Emissions (MTCDE) ⁽¹⁾	MTCDE/ 1000 sq. ft.	% Change FY06-07
FAS	87,742	12.3	0%
Business	19,326	13.3	-4%
Design	1,772	9.9	-5%
Divinity	1,327	8.0	-1%
Education	2,152	10.1	3%
Government	2,416	10.9	-5%
Law	8,162	10.2	-7%
Radcliffe	1,921	6.8	9%
Other	67,412	13.1	-5%
TOTAL (Cambridge/Allston)	192,230	13.0	-2%

	Total Energy Use (MMBTU)	MMBTU/sq. ft.	% Change FY06-07
Longwood			
Medical	764,635	0.33	2%
Public Health	178,321	0.31	-13%
Dental	34,937	0.35	3%

The Harvard University Greenhouse Gas Inventory is coordinated by the Harvard Green Campus Initiative (HGCI) using established protocol. Since FY2006, the Greenhouse Gas Inventory has undergone changes based on new developments and the emergence of best practices for GHG measurements; changes have been applied retroactively. For additional information, contact the HGCI or visit the following URL: <http://www.greencampus.harvard.edu/ggi/>

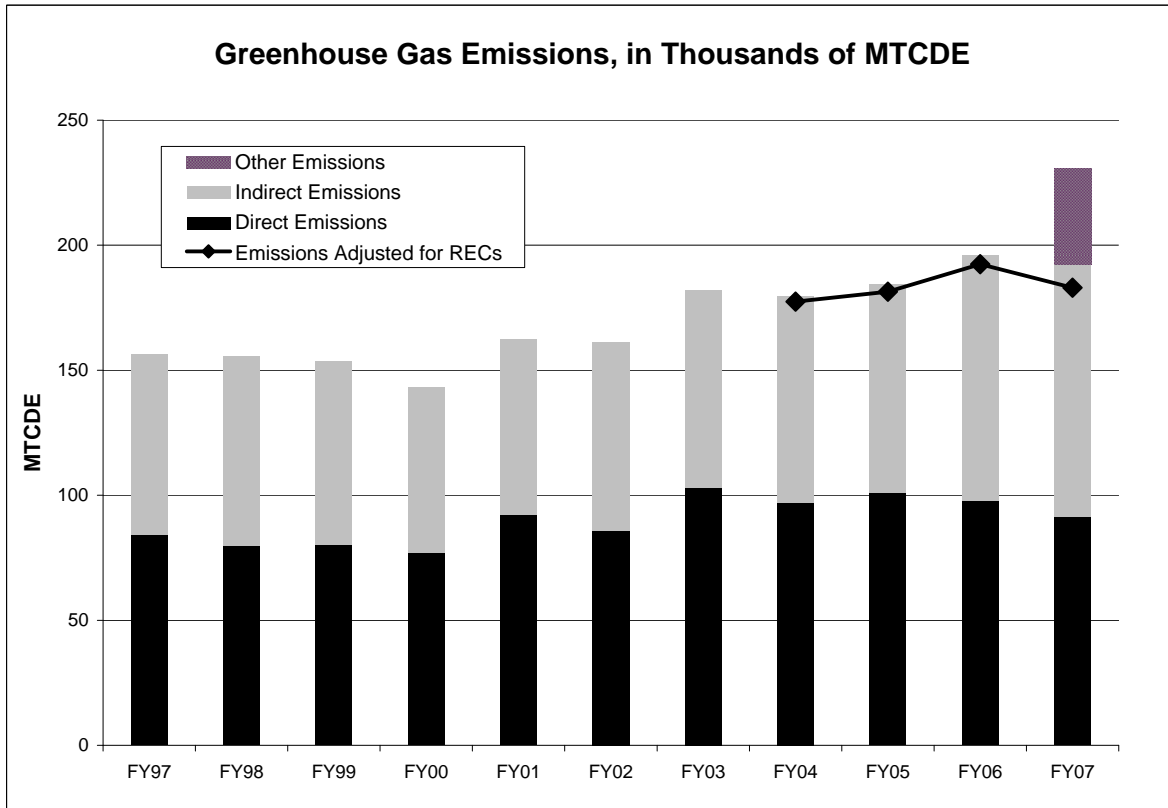
The three types of emissions represented in the graph below are:

- Direct Emissions - Sources owned by the institution
- Indirect Emissions - Purchased energy
- Other Emissions (new calculation as of FY2007) - Related to the institution but not caused by sources owned by the institution.

Renewable energy certificates (RECs) are shown as an "adjusted emissions reduction" as opposed to being deducted directly from the emissions total.

Cambridge/Allston Campus Greenhouse Gas Emissions: FY1997 - FY2007 ⁽²⁾

Expressed in thousands of MTCDE

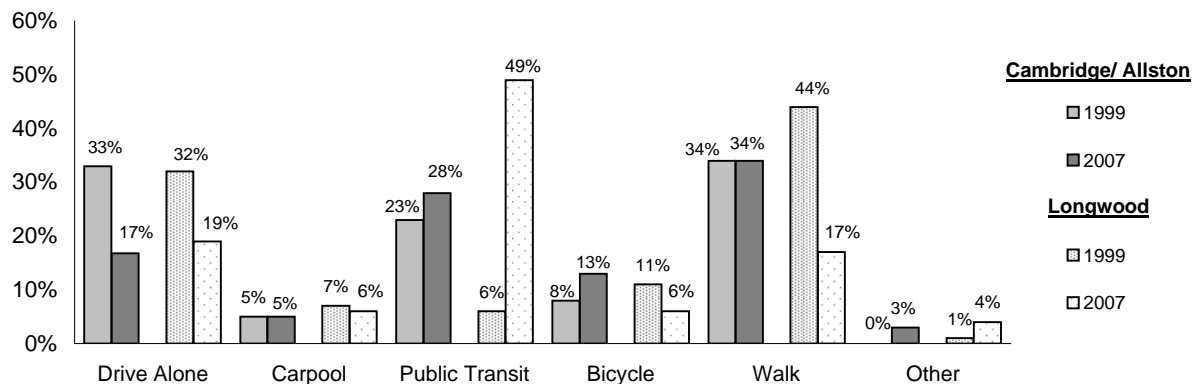


(1) MTCDE: Metric Tons of Carbon Dioxide Equivalent

(2) As of FY2007, Longwood campus data is no longer available. It has been excluded for all years from the graph.

SOURCE: HARVARD GREEN CAMPUS INITIATIVE

Commute Trends: FY1999-FY2007



Cambridge Commute Type data is from UOS, Transportation Services Department, "Summary Commute Data Form 4".
 Longwood Commute Data is from the Harvard Medical School Parking Office.

Green Campus Loan Fund: FY2003 - FY2007

The Green Campus Loan Fund is a \$12 million fund that provides capital for high performance campus design, operations, maintenance and occupant behavior projects. Basic project eligibility guidelines state that projects must reduce the University's environmental impacts and meet specific payback requirements.

Annual Green Campus Loan Fund Estimated Performance for FY07 Approved Projects

Environmental

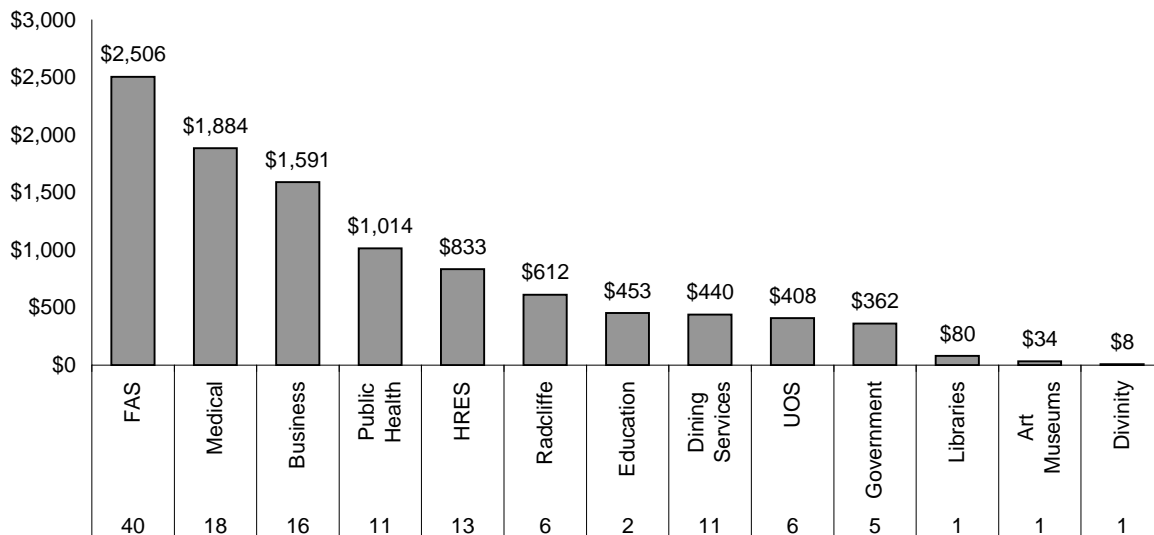
GHG Savings (MTCDE) (per year)	3,011
Estimated Water Savings (gallons) (per year)	2,487,600
Estimated Waste Recycled (lbs) (per year)	0

Financial

Estimated Annual \$ Savings from FY07 Approved Projects	\$625,224
Estimated Average Return on Investment (ROI) for FY07 Approved Projects	35%
Estimated \$ Amount Promised for FY07 Approved Projects	\$2,592,992

Total Amount Loaned per Faculty: FY2003 - FY2007

Expressed in thousands of dollars

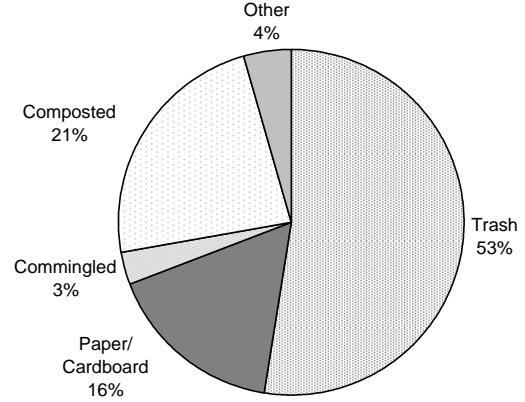


SOURCE: HARVARD GREEN CAMPUS INITIATIVE

Waste and Recycling: FY2007

	Recycling Rate	Trash (lbs. in 000's)	% Change Trash FY06-07
FAS	40%	11,186	12%
Business	39%	1,923	21%
Design	51%	227	56%
Divinity	43%	190	14%
Education	41%	165	15%
Government	36%	551	6%
Law	31%	1,363	33%
Radcliffe	70%	351	-55%
Medical	41%	2,516	-1%
Public Health & Dental	35%	814	24%
TOTAL	47%	17,164	-15%

Harvard University Refuse: FY2007

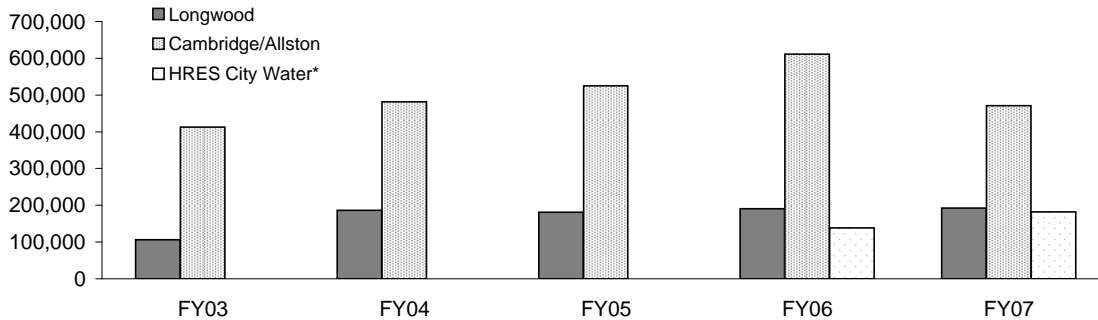


Solid Waste and Recycling data for Cambridge and Allston was reported by UOS, Solid Waste and Recycling Department.
Solid Waste and Recycling data for the Longwood campus was reported by the HMS and HSPH Operations Departments.

Water Use in Cubic Feet (CCF): FY2007

		Per 1,000 Sq Ft	% Change FY06-07
FAS	245,662	35	-33%
Business	46,840	32	-7%
Design	2,114	12	8%
Divinity	4,050	24	-11%
Education	4,881	23	1%
Government	13,238	60	104%
Law	24,034	30	2%
Medical	168,480	68	0%
Dental	2,800	28	-6%
Public Health	20,850	36	11%
HRES	181,971	24	31%
TOTAL	844,732	52	-9%

Total Water Use at Harvard FY2003-FY2007



Cambridge & Allston data is from the UOS Utility Reports. Harvard Medical School and Dental School data is reported by HMS Facilities Operations. Harvard School of Public Health data is reported by HSPH Facilities Operations.

* HRES city water data is not available prior to FY06.

SOURCE: HARVARD GREEN CAMPUS INITIATIVE

Leadership in Energy and Environmental Design (LEED) Projects as of FY2007

LEED is a rating system for green buildings and provides a nationally accepted third-party verification that a building project meets the highest performance standards.

LEED Certified: The project has been third-party certified to meet the US Green Building Council LEED Standards.

LEED Registered: The project has registered for LEED Certification, but is not yet verified.

As of June 2007, Harvard has 7 projects certified and 16 projects registered. Visit the HGCI website for an up to date list of LEED projects at Harvard: www.greencampus.harvard.edu/theresource.

Registered LEED Projects

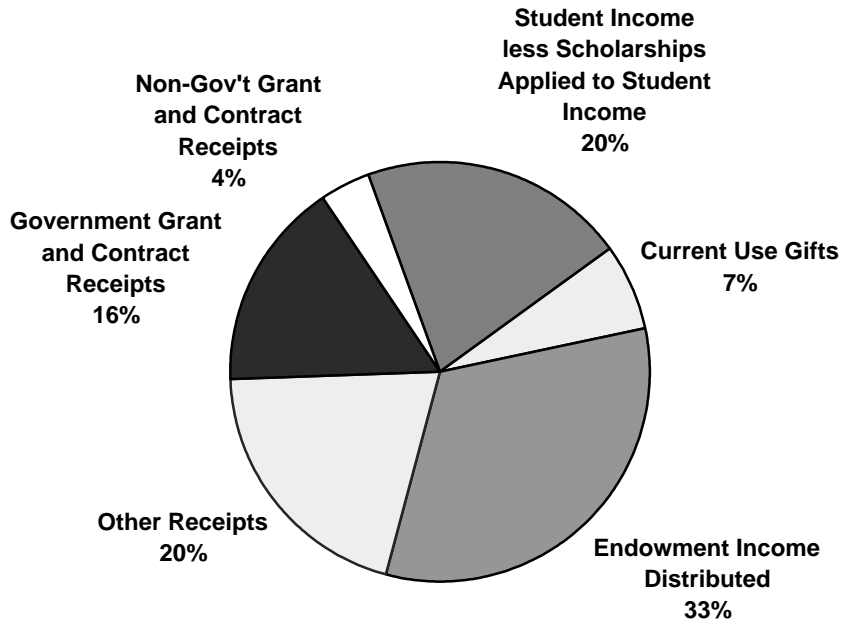
Project Name	Bldg. Type	Gross Sq Ft
FAS		
38 Oxford Street	Office	40,000
Business		
Gallatin Hall	Dormitory	100,000
McCollum Hall	Classrooms	100,000
Wyss Hall	Offices	5,000
Aldrich Hall	Academic	114,414
Hamilton Hall	Dormitory	48,000
500 Beacon Street	Office	118,000
Divinity		
Rockefeller Hall	Mixed use	26,715
Education		
Larsen Hall	Classroom	1,000
Longfellow Hall	Classroom	12,000
Allston		
Allston Science Center	Laboratory	695,000
Radcliffe		
Byerly Hall	Offices	42,000
Arnold Arboretum		
Weld Hill	Labs/Offices	45,000
Library		
90 Mount Auburn Street	Library	30,405
Harvard Real Estate Services		
5 Cowperthwaite Street	Housing	208,343
10 Akron Street	Housing	180,000

Certified LEED Projects

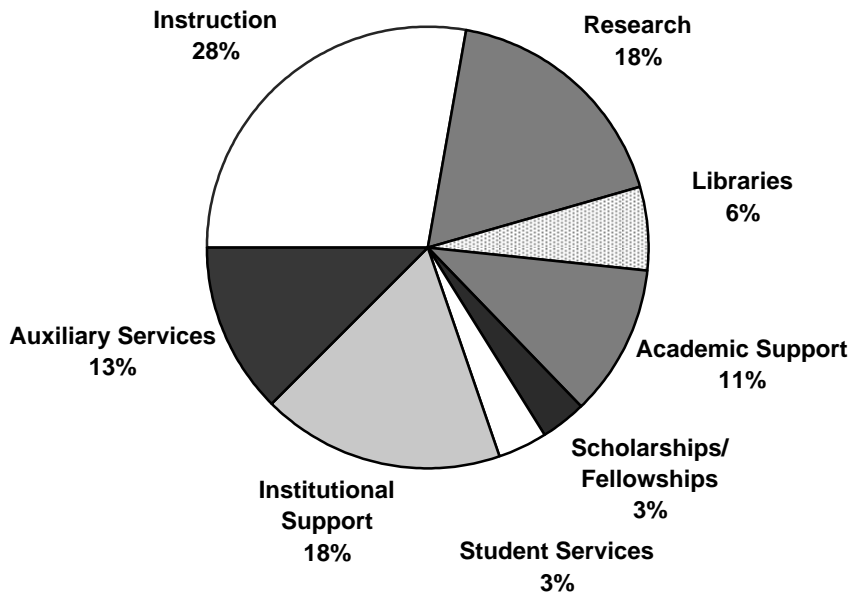
Project Name	Bldg. Type	Level	Gross Sq Ft
Public Health			
Landmark Center	Office	Certified	42,000
Harvard Real Estate Services/University Information Systems			
60 Oxford Street	IT	Certified	93,923
Harvard Real Estate Services			
One Western Avenue	Housing	Silver	229,000
Schlesinger Library	Library	Certified	24,000
Dining Services			
Mather Dunster	Kitchen/ Servery	Silver	15,870
University Operations Services			
Blackstone South	Office	Platinum	40,000
Outside Developer			
Two Arrow Street	Theater/Office	Certified	36,080

Total University Income and Expenses for Fiscal Year Ended June 30, 2007
Expressed in thousands of dollars

Total Income - \$3,210,506



Total Expenses - \$3,170,650



Departmental Operating Expenses Year Ended June 30, 2007

Expressed in thousands of dollars

	Salaries and Wages	Employee Benefits	Scholarships/ Student Awards
Faculty of Arts & Sciences			
Faculty of Arts & Sciences	\$320,892	\$82,098	\$173,386
Applied Sciences & Engineering	\$33,376	\$7,222	\$5,204
Division of Continuing Education	20,990	4,325	7,109
FAS Museums	11,331	3,522	1,294
Total Faculty of Arts & Sciences	\$386,589	\$97,167	\$186,993
School of Business Administration	141,875	36,645	20,167
School of Dental Medicine	12,360	3,654	1,762
Graduate School of Design	15,039	3,896	6,347
Divinity School	13,509	3,707	6,831
Graduate School of Education	31,190	8,472	10,512
School of Government	54,932	15,536	16,643
Law School	60,621	16,828	18,344
Medical School	158,240	46,106	50,136
Radcliffe Institute for Advanced Study	6,509	1,979	2,837
School of Public Health	84,116	24,077	13,924
Allston Initiatives	3,110	1,289	-
Other Faculties Subtotal	\$581,501	\$162,189	\$147,503
Total Faculties	\$968,090	\$259,356	\$334,496
Arnold Arboretum	4,886	1,856	60
Harvard University Art Museums	11,421	3,801	35
Joint Center for Housing Studies	1,114	336	23
Nieman Foundation	1,259	382	1,639
Villa I Tatti	2,649	693	923
Other Academic Departments Subtotal	\$21,329	\$7,068	\$2,680
Service Departments	\$116,193	\$39,220	\$803
Memorial Church	\$1,106	\$330	-
Central Administration ⁽²⁾	\$96,491	\$35,988	\$1,171
TOTAL UNIVERSITY EXPENSES	\$1,203,209	\$341,962	\$339,150

(1) Includes expense credits and transfers.

(2) Includes Harvard University Library and other University funds.

SOURCE: UNIVERSITY ACCOUNTING SERVICES

Less: Financial Aid Applied against Income	Equipment and Supplies	Space and Occupancy	Depreciation	Other Expenses ⁽¹⁾	Total Expenses
(\$130,079)	\$54,475	\$137,531	\$74,080	\$133,560	\$845,943
(\$3,589)	\$5,753	\$7,165	\$5,130	\$12,730	72,991
(6,854)	1,385	2,470	671	15,053	45,149
(15)	2,095	3,501	1,086	4,333	27,147
(\$140,537)	\$63,708	\$150,667	\$80,967	\$165,676	\$991,230
(17,879)	10,448	31,539	20,839	132,154	375,788
(1,307)	2,432	3,828	1,849	6,338	30,916
(5,481)	1,693	3,053	655	6,931	32,133
(5,809)	1,382	2,346	1,197	4,430	27,593
(7,833)	2,610	5,201	640	14,117	64,909
(10,784)	6,642	12,456	2,309	29,773	127,507
(14,135)	6,361	16,797	5,567	36,021	146,404
(19,563)	41,666	84,657	43,676	144,844	549,762
(14)	650	1,794	1,243	3,198	18,196
(7,180)	22,013	28,488	6,945	98,889	271,272
-	177	639	1	7,678	12,894
(\$89,985)	\$96,074	\$190,798	\$84,921	\$484,373	\$1,657,374
(\$230,522)	\$159,782	\$341,465	\$165,888	\$650,049	\$2,648,604
-	429	1,417	242	2,415	11,305
-	6,726	967	1,502	1,158	25,610
-	41	163	-	592	2,269
-	119	299	35	1,246	4,979
-	695	1,221	198	1,780	8,159
-	\$8,010	\$4,067	\$1,977	\$7,191	\$52,322
(\$10)	\$44,492	(\$1,451)	\$35,776	\$45,701	\$280,724
-	\$102	\$774	\$79	\$619	\$3,010
(\$30)	\$4,163	\$60,301	\$10,598	(\$22,692)	\$185,990
(\$230,562)	\$216,549	\$405,156	\$214,318	\$680,868	\$3,170,650

Market Value of Endowment Funds as of June 30, 2007

Expressed in thousands of dollars

Individual Unit Value: \$1,982.64 ⁽¹⁾

	Endowment Market Value ⁽¹⁾	Participating Units	Market Value % of Total
Arts and Sciences ⁽²⁾	\$14,976,211	7,445,083	42.9%
Business	2,824,408	1,330,072	8.1%
Dental	214,972	108,427	0.6%
Design	425,513	214,306	1.2%
Divinity	619,601	311,256	1.8%
Education	540,065	271,882	1.5%
Engineering and Applied Sciences	998,913	490,880	2.9%
Government ⁽³⁾	1,069,095	531,934	3.1%
Law	1,777,483	873,480	5.1%
Medical	4,079,527	2,048,325	11.7%
Radcliffe Institute for Advanced Study	587,305	293,233	1.7%
Public Health	1,225,682	592,770	3.5%
President's Initiatives	3,475,714	1,735,675	10.0%
Auxiliary Departments ⁽⁴⁾	362,970	173,869	1.0%
Central Administration	327,929	160,614	0.9%
Other Academic Departments ⁽⁵⁾	1,406,678	694,000	4.0%
Total Endowment	\$34,912,068	17,275,807	100.0%

(1) Market value includes endowment funds that are not unitized. Therefore, unit price times number of units may not equal market value.

(2) Arts and Sciences includes: Continuing Education, College Library, FAS Museums, GSAS, Athletics, College Life and Student Services, and Dumbarton Oaks.

(3) Government includes Institute of Politics.

(4) Auxiliary Departments include: Faculty Club, Health Services, Memorial Church, Operations, Real Estate Services, University Library, and University Press.

(5) Other Academic Departments include: Arnold Arboretum, Harvard University Art Museums, Interfaculty Initiatives, Nieman Foundation, and Villa I Tatti.

NOTE: Starting in FY07, Pledge Balances and Interests in Perpetual Trusts held by Others have been included in school totals. Therefore, line items may not be comparable to prior years.

SOURCE: HARVARD UNIVERSITY FINANCIAL REPORT / INTERNAL REPORTING

Historical Endowment Performance: FY1987 - FY2007

Fiscal Year	Unit Value at Beginning of the Year ⁽¹⁾	Dollar Value and Percentage Beginning Value Per Unit						Actual Distribution Per Unit ⁽³⁾	Spending Rate ⁽⁴⁾
		Income		Capital Gain		Total Return ⁽²⁾			
1987	\$224.75	\$11.16	5.0%	\$32.03	14.3%	\$43.19	19.2%	\$8.09	3.6%
1988	256.78	10.41	4.1%	3.57	1.4%	13.98	5.4%	8.49	3.3%
1989	260.35	13.94	5.4%	18.27	7.0%	32.21	12.4%	10.16	3.9%
1990	278.62	14.57	5.2%	6.04	2.2%	20.61	7.4%	10.65	3.8%
1991	284.66	12.75	4.5%	(9.72)	(3.4%)	3.03	1.1%	11.96	4.2%
1992	274.94	11.87	4.3%	20.26	7.4%	32.13	11.7%	12.44	4.5%
1993	295.20	11.70	4.0%	36.68	12.4%	48.38	16.4%	14.08	4.8%
1994	331.88	13.19	4.0%	19.05	5.7%	32.24	9.7%	15.01	4.5%
1995	350.93	11.90	3.4%	45.87	13.1%	57.77	16.5%	16.07	4.6%
1996	396.80	15.23	3.8%	86.03	21.7%	101.26	25.5%	17.20	4.3%
1997 ⁽⁵⁾	482.83	14.60	3.0%	106.53	22.1%	121.13	25.1%	19.84	4.1%
1998	589.36	10.64	1.8%	108.45	18.4%	119.09	20.2%	21.90	3.7%
1999	697.81	21.57	3.1%	60.94	8.7%	82.51	11.8%	23.14	3.3%
2000	758.75	14.42	1.9%	227.20	29.9%	241.62	31.8%	30.15	4.0%
2001	985.95	19.10	1.9%	(45.75)	(4.6%)	(26.65)	(2.7%)	32.92	3.3%
2002	940.20	20.63	2.2%	(25.42)	(2.7%)	(4.79)	(0.5%)	45.32	4.8%
2003	914.78	13.88	1.5%	98.73	10.8%	112.61	12.3%	47.11	5.2%
2004	1013.51	10.39	1.0%	202.17	19.9%	212.56	21.0%	49.70	4.9%
2005	1215.68	21.16	1.7%	210.00	17.3%	231.16	19.0%	54.17	4.5%
2006	1425.68	27.27	1.9%	209.36	14.7%	236.63	16.6%	60.99	4.3%
2007	\$1,635.04	26.12	1.6%	347.60	21.3%	373.72	22.9%	\$69.73	4.3%

Average Annual Growth Rates

20 YEAR	10.4%	-	-	-	-	-	-	11.4%	-
10 YEAR	13.0%	-	-	-	-	-	-	13.4%	-
5 YEAR	11.7%	-	-	-	-	-	-	9.0%	-
1 YEAR	14.7%	-	-	-	-	-	-	14.3%	-

(1) Harvard's endowment comprises approximately 11,100 separate funds. Each fund has been unitized and the separate funds hold "units of the endowment" as their value. Column one shows the value of units as of July 1.

(2) The total return percentage reported by the Harvard Management Company is slightly higher than the one listed above as it is calculated based on reinvestment of all earnings on a monthly basis.

(3) As of July 1, from income earned the previous fiscal year.

(4) This data is based upon the per unit distribution rate established by the Corporation for each fiscal year. The aggregate spending rate for FY07 was 4.6%. Aggregate spending rate percentage is based upon actual endowment distributions in combination with approved decapitalizations of endowment principal made during the fiscal year.

(5) Net of the \$1.28 per unit fringe supplement, the FY97 payout is \$18.56, and the spending rate is 3.84%.

* Value not available at time of publication.

SOURCE: INTERNAL ENDOWMENT REPORTS



On the Cover:

Detail of the outer gate of the courtyard at Winthrop House at Harvard University.

Harvard College is the oldest institution of higher learning in the United States. It was established in 1636 by vote of the Great and General Court of the Massachusetts Bay Colony and was named for its first benefactor, John Harvard of Charlestown, Massachusetts. Upon his death in 1638, the young minister left his library and half his estate to the new College. Founded 16 years after the arrival of the Pilgrims at Plymouth, the College has grown from nine students with a single master to an enrollment of more than 20,000 degree candidates, including undergraduate and graduate students in 10 graduate and professional schools.

Photo by Phoebe Sexton / Harvard University News Office

