



HAYLE



2011

# HAYLE IN BLOOM 2011

## Contents

WELCOME TO HAYLE .....	1
INTRODUCTION .....	2
ACHIEVEMENTS .....	8
COMMUNITY INVOLVEMENT AND PROJECTS .....	14
REGENERATION .....	16
CONSERVATION, RECYCLING AND SUSTAINABILITY .....	18
CORNWALL COUNCIL – PARKS AND GARDENS.....	21
ENVIRONMENT .....	23
CORPORATE SPONSORS .....	25
MARKETING AND PUBLICITY .....	25
CONCLUSION AND FUTURE DEVELOPMENTS.....	27
APPENDICES .....	A1

## HAYLE IN BLOOM COMMITTEE

### Chairman

Margaret Tanner  
6 Trevarno Close, Connor Downs, Hayle, TR27 5EN  
01736-756772  
chair@hayleinbloom.org.uk

### Secretary

Ingrid Kemp  
16 St. John's St., Hayle, TR27 4LL  
01736-756257  
secretary@hayleinbloom.org.uk

### Treasurer

Mike Meadows  
8 Market Place, Hayle  
treasurer@hayleinbloom.org.uk

## CORNWALL COUNCIL TEAM

St. Clare, Penzance  
TR18 4LZ  
01736-362341

### Open Spaces Manager

Jackie Mace

### Hayle Head Gardener

Michael Kemp

### Hayle Gardener

John Drew

## Front Cover:

Top: The Loggans Roundabout. Logo photographed 1 July 2011.  
Centre: Children from Bodriggy Academy work on the 'Beast Mansion'.  
Bottom: View across Copperhouse Pool.  
Small images: (Clockwise from top left) Melvin Osborne works on the boat by Jewsons. Dick Horwell and Mary Coad work on the Swimming Pool garden. The Hayle Flower Club works on the touch and scent garden for the visually impaired. A bench on Penpol Terrace gets a coat of paint.

## Symbols:

	Horticultural Achievement		Environmental Responsibility		Community Participation
---	---------------------------	---	------------------------------	---	-------------------------



## Welcome to Hayle



Hayle, looking towards Godrevy Lighthouse  
© Peter Channon, Over Cornwall

Hayle (or Heyl, meaning estuary in the ancient Cornish language) has a long and remarkable history. A site of settlement since the Bronze Age, Irish and Breton sailors called here as early as 1500BC to collect Cornish tin. In Roman times, large ships sailed up the estuary to St. Erth, and by 500AD early Christian missionaries from Ireland were landing in the Heyl estuary.

In the Middle Ages, six great manors covered the area of the town, but Hayle is really a product of the 18th and 19th centuries, when the town was at the forefront of the Industrial Revolution.

The port fed the mines of West Cornwall with coal and timber, and iron foundries at either end of the town developed communities around them. In the west, Harvey and Co. of Hayle worked with Richard Trevithick and built pumping engines and mining equipment which they sold worldwide; at the eastern end, the Cornish Copper Company also made iron goods, including chains for Brunel's Clifton suspension bridge, and later specialised in beaten copper. Quays and wharves were built, the Steam Packet ran to Bristol and an early railway carried goods inland. The historic importance of our harbour has been recognised as part of the Devon and Cornwall Mining World Heritage Site. The estuary is now a protected reserve managed by the RSPB and attracts birds and their watchers in large numbers. This includes Copperhouse Pool, bordered by the subtropical King George V Memorial Walk with its astonishing display of flowers and plants.

The Towans (Cornish for sand dunes) that were once the site for mines, and early in the 20th century an explosives works, now provide a huge variety of recreational opportunities. One of the finest stretches of beach in the country, swimming, surfing, sand yachting, kite surfing (and kite flying) are all available – as are most water activities.

Although proud of its past, Hayle is a forward-looking town. With a proposed redevelopment of the harbour area and regeneration of the town centre, and with the support of Hayle in Bloom and the town's many organisations, Hayle will become an even better place to live, work and visit.



## Introduction

### History

Hayle's Britain in Bloom Group was formed in January 2000 with the aim to enter the Britain in Bloom Competitions and to enhance and beautify our town of Hayle here in Cornwall. We received strong support from the town council then and continue to do so now. The first meeting of the group was not held until January 2001, when a 'working party' was set up and our first entry, which was judged on 26 July, gained a [Highly Commended Award](#).

Our second year of entry was in July 2002. At the Awards Presentation at the Bath & West Show Showground in Somerset, on 06 September, Hayle won a [Silver Gilt Award](#) and also the [Sargent Trophy](#) for outstanding effort and dedication from a competition entry.

In 2003 we achieved the coveted [Gold Award](#) and also the [London & Manchester Trophy](#) for Outstanding Contribution to Environmental Initiative for Small Towns/Villages. In 2004 and 2005 we received [Silver-Gilt](#) awards and also grants from B&Q for £2,500 enabling us to enhance the area around the town's open-air swimming pool. We also received a grant from the Liveability Fund for £2,040 towards purchasing various items of tools, planters and other horticultural equipment.

Our banner year was 2006 when we achieved not only a [Gold Award](#) but also the [Abbiss Cup](#) for the best municipal planting of a roundabout. Our roundabout at Loggans was voted the best in the whole of the South West. We also received a [Neighbourhood Award](#) for our Adopt-a-Plot scheme, and our entry from the Schools' Painting Competition by Victoria Emberson from Hayle Community School won [first prize](#).

In 2007 we were entered in the National Competition for the first time and achieved a respectable [Silver-Gilt](#). In the SWTA competition we again achieved [Gold](#). And Marjorie Roberts, our Chair, was awarded the [Shredded Wheat Community Champion](#) prize.

At the 2008 South West in Bloom awards presentations we were again awarded a [Gold](#) in our category and then received the astounding news that we have taken the [SWTA Cup](#)! The judges praised Hayle's work and gave honourable mentions to our web site and portfolio.

2009 saw another [Silver-Gilt](#) in the National Competition – just 3 points off Gold and the section winner. However, we topped the scoreboard again in the SWTA competition with both [Gold](#) and the [SWTA Cup](#). [Neighbourhood Awards](#) were achieved for our [Library Wildlife Garden](#), the [Adopt-a-Plot scheme](#) and the [Millpond](#). Emma Coster from Hayle Community School won [first prize](#) for her painting in the 12-16 year old category.

In 2010 we made it a hat-trick with both [Gold](#) and the [SWTA Cup](#) again. A new [Neighbourhood Award \(Outstanding\)](#) was received for the King George V Memorial Walk.



EMMA COSTER

## Major Projects/Successes Through The Years (2010/11: new this year)

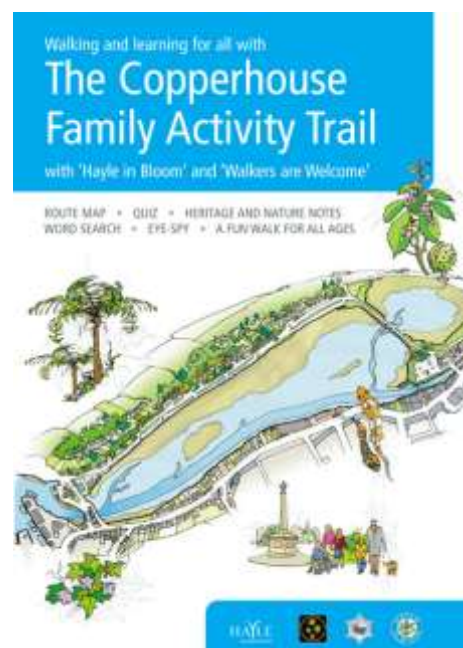
Some of the major projects that have helped to brighten up the town over recent years are highlighted below. More details of some of these are included later in this portfolio.

- ❁ Adopt-a-Plot scheme, which has encouraged over 30 volunteer gardeners to give their time to beautifying Hayle.
- ❁ Town branding: standardised logo, colour, flags, banners and documents give a consistent image of the town.
- ❁ Streetscape: improvement of the street furniture at Copperhouse and complete renovation of Foundry Square.
- ❁ Hayle Townscape Heritage Initiative: restoration and renovation of important historical buildings throughout the town with an emphasis on traditional shop fronts.
- ❁ Millpond: restoration and on-going maintenance of this historic pond, now an important nature reserve and recreational area.
- ❁ 51 Blue Plaques installed around the town celebrating our heritage, many related to the World Heritage Site. (2010/11)
- ❁ Harvey's Foundry Trust: restoration of the historical heart of Foundry providing employment space and live/work units while preserving Hayle's history.
- ❁ Harbour Development and Regeneration of World Heritage Site: Hayle Harbour is now part of the Cornwall and West Devon Mining Landscape World Heritage Site in recognition of the major role it played during the industrial revolution. The planned harbour development will restore many of the important historical features of the harbour.
- ❁ Breathing Spaces: design and implementation of a butterfly and wildlife garden at Hayle Library providing a habitat for wildflowers and a host of insects.
- ❁ Swimming Pool: landscaping, decorating and planting of the open-air swimming pool and surrounding area.
- ❁ Grants: We have received substantial grants from Hayle Town Council, Hayle Area Plan Partnership, Cornwall Council and the Hayle and District Chamber of Commerce.
- ❁ Foundry Trees: Following the Foundry Square refurbishment we supported the installation of eight large tubs planted with hardy trees to provide greenery in the area.
- ❁ Town becomes first *Walkers are Welcome* town in Cornwall. (2010/11)
- ❁ Release of Discover Hayle map with an emphasis on discovering the area without the use of a car. (2010/11)
- ❁ Beast Mansion installed on King George V Memorial Walk and maintained by Bodriggy Academy. (2010/11)





- ✿ Schools: excellent involvement of local schools including adopt-a-plot and the painting competitions. Bodriggy Academy is continuing its successful adopt-a-plot on the King George V Memorial Walk.
- ✿ The Copperhouse Family Activity Trail issued with help from Hayle in Bloom & Walkers are Welcome. (2010/11)
- ✿ Creation of 40 allotments on Lethlean Lane – all were immediately snapped up and a friendly Allotment Association now works with Hayle in Bloom. (2010/11)
- ✿ ‘Blooming Hayle’ summer celebration created by Hayle in Bloom and attended by over 3,000 people. (2010/11)
- ✿ Hayle Oral History Project records hundreds of hours of local history and issues a book: *Churks, Clidgy and Doodle-Dashers* which has 800 queuing for a copy when it is printed. (2010/11)



### Number of Volunteers

We have over 30 adopt-a-plotters and at least 60 other active supporters plus several classes of schoolchildren and the disabled people at Heather Lane Nurseries. The numbers continue to grow every year as do the number of corporate sponsors. Corporate sponsors include Wyevale Garden Centre and the Haven Holiday Park. We are also supported by dozens of small businesses throughout the town.

### Key Community Partnerships

- ✿ Hayle Rose and Cabbage Horticultural Society: active members
- ✿ Hayle Flower Club: adopting the Touch and Scent Garden
- ✿ Chamber of Commerce: supporting with posters, donations and publicity
- ✿ Day Care Centre: support and elder involvement
- ✿ Probation Service: young offender involvement
- ✿ Hayle Youth Project: youth projects
- ✿ Walkers are Welcome: town walks and maps
- ✿ Paradise Park: gardening support, adopt-a-plot
- ✿ Haven Holiday Park: green weekends, beach clean-ups, recycling, car-free days
- ✿ Wyevale Garden Centre: adopt-a-plot, plants and support
- ✿ Hayle Lions: Financial and organisational support

### Fund Raising and Support

- ✿ Chamber of Commerce
- ✿ Hayle Town Council
- ✿ Cornwall Council
- ✿ Hayle Area Plan Partnership
- ✿ The Cooperative Group
- ✿ Local corporate sponsors, large and small
- ✿ Strawberry Leisure



**The Year in Pictures**

*SEPTEMBER/OCTOBER 2010*



New boat on Carnsew Meadow



Working at the Swimming Pool

*NOVEMBER/DECEMBER 2010*



The Lions' Boat gets planted



A mild winter – so far

*JANUARY/FEBRUARY 2011*



By the Millpond



Spring is coming



MARCH 2011



'Beast Mansion' under construction



40 Allotments opened



Working on the 'Touch and Scent' garden



Allotment work gets under way

APRIL 2011



Blossoms at the harbour



At the Library

*The cold temperatures in January triggered many of our exotics to flower – some, like the furcraea, as their final act before dying off.*



MAY 2011



Melville Osborne at his boat



May is beautiful in Hayle

JUNE 2011



Time to spruce up the benches



Royal British Legion's 90th



John Passmore Edwards' Centenary



Painting the Cycle Trail marker

*Hayle Estuary provides the first resting place for many migratory birds. In the winter you can see Widgeon, Teal, Shelduck, Dunlin and Curlew*





'Blooming Hayle' attracts 5,000 visitors



Clog Dancers prove popular

## Achievements

### What's New for 2011?

### Banners and Flags Around Town [●]



Hayle continues its branding project by adding colourful banners in Foundry Square, the Recreation Ground, the Commercial Road car park and at the swimming pool.





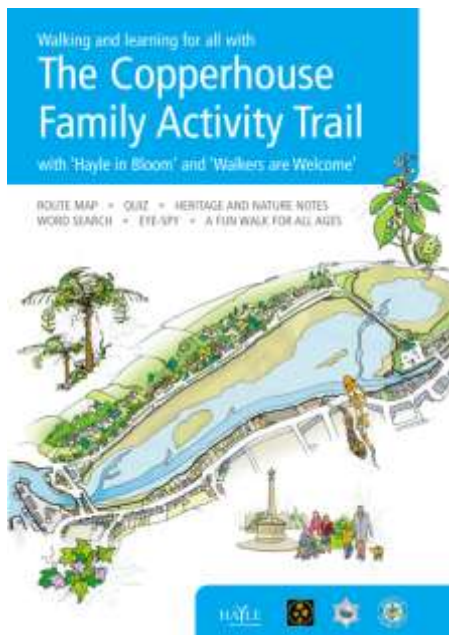
## DISCOVER HAYLE MAP [● ●]

To encourage the discovery of Hayle and the surrounding area without the use of a car, we created and launched the Discover Hayle map. You can find out about the flora, fauna and heritage of the area and it is available FREE from Hayle Tourist Information Centre, accommodation providers and retail outlets throughout Hayle, Gwinear-Gwithian and St. Erth.

Visit the website at [www.haylemap.org.uk](http://www.haylemap.org.uk).



## THE COPPERHOUSE FAMILY ACTIVITY TRAIL [● ●]



Following on from the recent launch of the Discover Hayle map, we have now released the Copperhouse Family Activity Trail.

With the support of Hayle in Bloom and Walkers are Welcome, we now have a map full of information and fun things to do.

Everyone can join in the fun by downloading a copy or picking one up from the Council office or the library/Tourist Information Centre.

## HAYLE IS FIRST WALKERS ARE WELCOME AREA IN CORNWALL [● ●]

Hayle is the first town in Cornwall to be awarded *Walkers Are Welcome* status. Thanks to the work of the Hayle Area Plan team and the Walkers are Welcome Steering Group, including Hayle in Bloom, we have achieved accreditation and are now listed on the Walkers are Welcome web site. We will be ensuring that the needs of walkers are met by ensuring that footpaths and facilities are maintained in good condition - benefitting both local people and visitors.



Hayle in Bloom 2011



## BLUE PLAQUES [● ●]



Ten years ago, the town erected 25 blue plaques identifying interesting heritage sites throughout the town. Some of these were missing or damaged and a lot of important sites were unmarked.

We have created 51 new blue plaques and, since a lot of Hayle is in a World Heritage Site, we have also received permission to use the WHS logo on most of the plaques. All of the plaques are shown on the new *Discover Hayle* map.

*In Roman times, large ships sailed up the estuary to St Erth and by 500AD early Christian missionaries from Ireland were landing in the Heyl estuary.*

## Wharves Branch Line [● ● ●]

Once planned for development as 70 dwellings, the Wharves Branch Line is now being brought into public ownership thanks to a volunteer team. By clearing the site and making it pleasant for walkers, the owners have agreed a plan to turn it into a public footpath.



Here's a picture before the clean-up.

And below is a picture after – landscaping to follow!



*Copperhouse is named after the Cornish Copper Company which ran a copper smelter and other works between 1758 and about 1860*

*The distinctive black blocks used for walls and buildings around Copperhouse are called 'scoria' (from the Latin for rust) and are made of slag from the Cornish Copper Company's furnaces.*



## Blooming Hayle [●]

We love the King George V Memorial Walk so much that Hayle in Bloom decided to have a celebration day. By closing the Walk to traffic we could let families enjoy it to its full potential while enjoying locally-provided entertainment.

Local charities, organisations and businesses had stalls so that people could become acquainted with them.

Between 3,000 and 5,000 people packed the Memorial Walk and everyone reported having a great time.

We are already planning for next year.



## Churks, Clidgy and Doodle-Dashers and Hayle Archive[●]



Hayle has been running an Oral History Project for two years and it culminated in the production of a book.

It is now in its second printing and has received tremendous praise. It has been nominated for the *Holyer an Gof* prize awarded by the Cornish Gorsedd.

Hayle has also established an official Archive, housed in the old Brewery Office that was saved from dereliction. The *Churks, Clidgy and Doodle-Dashers* book provides income to support the Hayle Archive.

*The King George V Memorial Walk was created in 1935 to commemorate the Silver Jubilee of King George V and Queen Mary.*

*The King George V Arboretum, which is laid out parallel to the Memorial Walk, comprises a very fine collection of specimen trees planted in 1952.*

*It was the gift of the Harvey family to the people of Hayle.*



## Prior and On-going Achievements

### Hayle in Bloom Logo [●]

Last year the Hayle in Bloom committee looked at a number of designs for a logo. The final choice was designed by Ingrid Kemp, wife of head gardener, Mike Kemp.

The colour of the outer ring was chosen to be the same as the Hayle town logo to help give a consistent feel to signs around the town.

### Corporate Sponsors with Strong Environmental Credentials [● ●]

We are delighted to count Wyevale Garden Centre and the Haven Holiday Park among our corporate sponsors.



Wyevale has also taken on an Adopt-a-Plot at Foundry Square and supports us with plants and supplies.



The Haven Holiday Park is an exemplar of how to run a business in an environmentally friendly way. They not only manage their business with regard to the environment but they also encourage their visitors to recycle, respect the environment and to have car-free days. Manager June Donnery also helped Hayle in Bloom to have David Bellamy visit our projects, especially the Wildlife Garden.

### Harbour Development and Regeneration of WHS [●]

ING Real Estate, UK Ltd. has received outline planning permission for a £210 million development at Hayle Harbour.

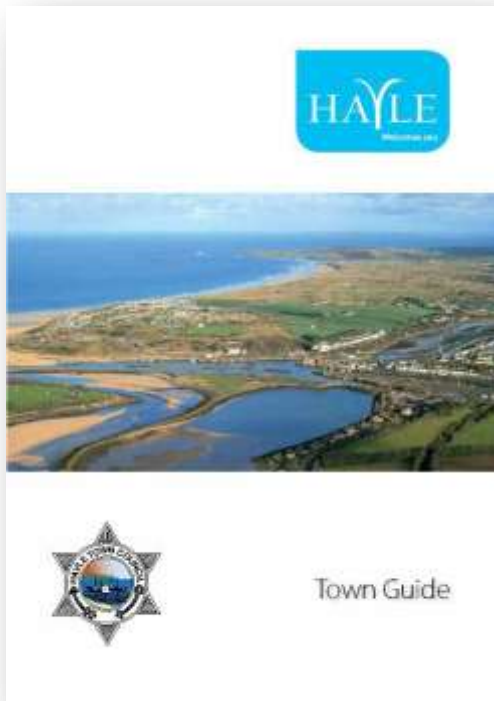
The project will redevelop the harbour area and renovate the damaged harbour walls. There will be over a thousand new dwellings as well as industrial, office and retail developments.





## Town Guide [●]

Hayle Town Council has produced a Town Guide that includes a page on Hayle in Bloom. The colourful guide presents Hayle as an excellent place to live in and to visit and encourages businesses to relocate here. The Town Guide was updated and reissued in 2010.



## Town Logo [●]

The Hayle Area Plan Partnership, which is responsible for the Hayle and district plan for the period 2006-2026, has endorsed the town logo produced with the help of Nixon Design of Hayle. The copyright in the logo now resides with the Hayle Town Council which will ensure that it is used appropriately.



And here is the Town Logo at the Carwin Rise roundabout soon after planting in 2010.



## Community Involvement and Projects

### ADOPT-A-PLOT [●●●]

The Hayle in Bloom Adopt-a-Plot scheme continues to grow from year to year. We now have over 30 members tending plots around the town from Copperhouse to Foundry and all along the King George V Memorial Walk. Under the guidance of head gardener Mike Kemp, the adopt-a-plotters weed, plant and tend the plots to give the gardeners an opportunity to use their skills elsewhere. The Adopt-a-Plot scheme is managed by Ann Foreman who, even in her ninth decade, still sets us a fine example. Volunteers have recorded over 1,000 hours of work over the year.

### CARNSEW MEADOWS BOAT [●●]

This small field at Carnsew Meadows was a wasteland until adopted by Bob Lloyd. Bob has lovingly turned the area into a pleasant meadow with a floral boat. It is planted with a variety of plants and wild flowers that pop up at different times of the year. We have already had a fine show of poppies.

Bob has also adopted a lot of the 'western approaches' to Hayle and has tidied up the grass on the Plantation and some of the verges.



This is a fine example of how Adopt-a-Plotting works in the hands of a keen and public-spirited volunteer.

We are hopeful that this land might be gifted to the public domain in due course.

### WILDLIFE GARDEN [●●●]

Thanks to a Big Lottery Fund grant we have been able to design and build a wildlife garden with a special emphasis on attracting butterflies. The garden has been created behind the Hayle Library adjacent to Copperhouse Pool and combines stone walls, hedges, paths, seats and a shelter to provide an ideal place for wildlife and a calm, relaxing environment for humans to watch them.

The project was supported by Hayle and district schools.

*Copperhouse Pool has been a Site of Special Scientific Interest since 1951 and was sold to the RSPB for £1 in the 1980's.*





## HAYLE DIAL-A-RIDE [●]

The Hayle area Dial-A-Ride scheme was launched in March 2005 as a flexible, innovative solution to transport difficulties facing residents in the area. The project is operated using a 12-seater minibus, with a part-time paid co-ordinator and driver, supplemented by additional volunteer drivers and office workers.

The project was supported by both capital and revenue funding from the County Council, along with financial contributions from the Countryside Agency, Jobcentre Plus and Surestart.



## BUSINESSES AND ORGANISATIONS

### HAYLE ROSE AND CABBAGE HORTICULTURAL SOCIETY [● ● ●]

President:  
Ruth Atterbury-Thomas

Chairman:  
Jackie Aglin

**HAYLE ROSE & CABBAGE  
Gardening Club**

**39th SUMMER SHOW**  
at Hayle Day Care Centre on  
**SATURDAY 23 JULY 2011**  
from 11am to 6pm

Presentation of prizes at 5.30pm by  
Hayle Citizens of the Year

**Admission: Adults £1.50 Children up to 14 Free**

The entry form can be found in the centre of this schedule

Good Luck to all exhibitors

Thanks go to all the judges for their time, expertise and  
dedication in judging the Show entries.

A very big "thank you" to all the visitors

Hayle in Bloom works closely with the Hayle Rose & Cabbage Horticultural Society and we share many members.

The Rose & Cabbage Society puts on a programme of lectures and activities throughout the year, runs an annual Summer Show (now in its 39th year) during *Heylfest* week and sponsors a host of prizes for flowers, fruit, gardens, hanging baskets and much more.



One of the Rose & Cabbage Society's Prize-Winning Gardens

### PARADISE PARK [● ● ●]

Paradise Park has always been a strong supporter of Hayle in Bloom and is itself an exemplar of conservation, good management and skilled gardening. Hayle in Bloom is proud to be associated with Paradise Park.

For more on Paradise Park, please see [www.paradisepark.org.uk](http://www.paradisepark.org.uk).



## SWIMMING POOL PROJECT [●●●]

The Hayle Swimming Pool was looking very tired when Hayle in Bloom sought a community grant from B&Q. The grant was received and included plants and materials. This year Jewsons donated the paint to give a second coat.

The before and after pictures are shown on the next page. Hayle in Bloom members John Coombe and Dick Horwell did most of the painting and restoration of the swimming pool. Jeff and Sarah Turk did a lot of the original planting and adopt-a-plotter Mary Coad and Lyn Pollack (bottom picture) have kept the area in good shape.

The Hayle Town Swimming Pool definitely in need of attention



Painting and planting have made the whole area look much more inviting

## Regeneration

### STREETSCAPE [●●●]

The Streetscape project is an off-shoot of the £4.1 million Hayle Townscape project funded by EU Objective One, HLF, English Heritage, Regional Development Agency, Guinness Trust and our local councils. Streetscape, now nearing completion, allowed for the much-needed improvement to the public realm in both Copperhouse and Foundry.

The Foundry Square project involved the complete reworking of the junction with an eye to improving the square for pedestrians. A large amount of Cornish granite was used to repave the area and new lampposts, a beautiful bus shelter and renewed street furniture were installed.

We have installed Italian Oak trees in giant tubs to add a final touch to the project.







Copperhouse Flowerbeds



Copperhouse Town Noticeboard



New Bus Shelter at Foundry



Granite Pavements at Foundry

### **FOUNDRY SQUARE** [●●●]

This project is covered in Community Projects above. Following a £350,000 grant, Foundry Square has been completely redesigned with pedestrians in mind and now boasts large pavements made of Cornish granite, stylish lampposts and a brand new bus shelter. With the eight trees, the effect is stunning.

### **HAYLE AREA PLAN PARTNERSHIP** [●]

Hayle has completed a 20-year plan for the period 2005-2025 and the plan implementation is under the guidance of 'delivery groups' comprising residents of Hayle and district. The whole process is supported strongly by the town and county councils.



*Installing a number of signposts to the King George V Memorial Walk resulted in an increase in visitors, including some town residents who 'didn't know it was there!'*



## Conservation, Recycling and Sustainability

### OUR SUSTAINABLE GARDENING STRATEGIES: [●●]

Avoidance of monoculture by planting a diversity of plant material and employing crop rotation.

Our flower beds display a wide variety of species and are rarely planted with a single species. The contents of each bed are recycled throughout the year and differ from year to year.

Selection of disease resistant plant varieties and those suited to the garden's natural environment.

We are fortunate in not being plagued by many pests. No sprays or insecticides of any kind are used in our flower beds.

Maintenance of soil to a high degree of fertility with organic matter and fertilisers.

The soil is fertilised with organic matter, both manure and seaweed. Disease, weed and pest control uses benign properties or plant derivative pesticides and herbicides.

Use of chemicals only where alternative methods are not viable and then only with the greatest discretion.

Mulching with wood chips is used for weed control. Close planting is also used to reduce the light available to weeds. Chemical spraying is not used on flower beds at all.

Employment of less water-hungry plants and alternative lawns.

Where watering is necessary we have installed reservoir watering systems that apply the water directly to the roots, thus minimising evaporation. In our climate we are able to focus on drought-resistant plants such as the succulents. Plants that we use that are tolerant of dry conditions include: agapanthus, agave, aloe, puya, aeonium, aloe, gravilia and Southern Hemisphere plants such as phormium.

Low maintenance in design and planting.

We use reservoir watering schemes, close planting for weed control (such as African marigolds) and succulents.

Plantings of trees and shrubs.

King George V Memorial Walk has an arboretum and there are trees planted throughout the town. Our trees include plane, Acer Platinoïdes, Tulip Tree, walnut, paulownia, beech and eucalypts. We have a huge variety of shrubs.





## Recycling & Green Waste [●]

In 2003 Penwith Council introduced household recycling where glass, paper, cans and textiles, are collected from the kerbside in a free, recycled plastic, 55-litre box with a lid. Plastics, textiles and books can also be taken to the Recycling Centres situated around the town.

In 2005/2006 the Council's recycling rate was 17.3% and our current rate is 36.2%. Cornwall Council is one of the few councils that recycles beach cleaning waste. This figure was achieved by a combination of Recycling Banks throughout the district, including mini recycling centres in predominantly rural areas, supermarket points and voluntary group collections alongside a multi-material kerbside recycling scheme and the green waste kerbside collection scheme. Both these schemes were introduced and funded wholly by the Council. At the end of 2007 the recycling rate had jumped to 29% and we are now closer to 36%. With the introduction of card collection the rates will go even higher.



Over the last three years over 90% of green waste produced throughout the district has been recycled. Leaves collected from the roads during the Autumn are taken to the Green Waste Company Recycling Farm at Splattenridden. The Council last year were reimbursed over £23,000, which was put towards the purchase of a new street-cleansing vehicle. Splattenridden Farm was granted £160,000 from 'European Objective One' to purchase equipment for converting green and wood waste into a quality compost to fertilise farm land. The project provides substantial local environmental benefits by reducing the amount of green and wood waste entering Cornish landfill sites by more than 15,000 tonnes in the next four years.

Green waste recycling has been boosted by the work of a giant shredding machine that munches its way through garden and woodland cuttings to produce useful compost. Kerb-side collections of green waste are taken to Downs Farm, where the waste is loaded into the high-capacity shredder. The compost that emerges is formed into open rows which are turned regularly as part of the process. Downs Farm recently received full accreditation from the Composting Association and it is hoped that the compost can be packaged and sold locally. This scheme is contributing to the Council achieving its recycling targets and also benefits the environment.



### **GOLDEN SUCCESS FOR BEING GREEN**

The Recycling Service was awarded the Green Apple Award for its achievements in recycling/waste awareness initiatives. The Green Apple Award was presented to Mike Toms, the Council's Recycling and Refuse Manager, and Karen Clowes, Sustainability Officer, at the House of Commons by the Green Organisation and Chartered Institute of Waste Management.





The Touch and Scented Garden focuses on aromas and bright colours – particularly yellow, which is one of the easiest for the visually impaired to see

The gardens of Bon Aer nursing home in Foundry have been created for the elderly residents to enjoy. Features include a rockery and a pool



The Bon Aer residents are encouraged to help with the garden. Some are experienced gardeners and have a few suggestions of their own

*The foundry, after which the western part of Hayle is named, was established by John Harvey in 1779 and finally closed in 1903. Hayle was a major part of the Industrial Revolution when it led the world in the design and supply of high-pressure steam engines.*





## Cornwall Council – Parks and Gardens

### ESSENTIAL SUPPORT

Underpinning the attractiveness of Hayle's open spaces is the support of Cornwall Council's dedicated team of workers.

### STREET CLEANSING [●]

Much co-operation is given by the residents of Hayle who report problems and regular inspections ensure good cleanliness standards are maintained. The Street Cleansing team follow a programme of scheduled routes which are designed to keep the area free of litter and debris. The street cleansing team undertakes the removal of weeds from streets which are removed mechanically by a street cleansing machine or manually with a hoe.



### DOG AND LITTER AWARENESS [●]

In 2010 Cornwall Council enacted Dog Control Orders permitting fixed penalty tickets to be issued to those who do not clean up after their dogs. Previously, CC officers had to make a court appearance for every violation – a slow and expensive process. Dog wardens regularly patrol Hayle and a number of tickets have already been issued.

### ABANDONED VEHICLES [●]

The Council joined forces with the DVLA and the Police in an initiative to crack down on untaxed vehicles in the Penwith area. The partnership targets unlicensed and abandoned vehicles as part of the campaign to rid the area of abandoned vehicles. The Council aims to



A 'CUSTOMER' WAITS ANXIOUSLY FOR A NEW DOG BIN TO BE INSTALLED.

demonstrate what can be achieved in dealing with the ever-increasing environmental problem caused by abandoned vehicles, and in doing so improve the quality of life for local people.

### FLY TIPPING [●]

Although the Council runs a bulky waste collection service and provides a Recycling Centre nearby with skips at designated sites, fly tipping does sometimes occur. All fly tipping is recorded and collated monthly to submit to the Environmental Agency, which has set up a national database recording system known as 'Fly-capture'. It is the Council's aim to collect all fly tipping within one day of it being reported.



## SCHOOL PROJECTS [●●●]

Hayle in Bloom maintains close contacts with schools in the area through the adopt-a-plot scheme, supporting the South West in Bloom painting competitions and through projects such as the nesting boxes, butterfly garden and school talks on protecting our environment.

## BEAST MANSION [●●]



With the help of the Head Gardener from Morrab Gardens, the children of Bodriggy Academy primary school constructed a 'Beast Mansion' on the King George V Memorial Walk. Designed to provide a habitat for a wide range of 'creepy crawlies', the children loved this project and are monitoring throughout the school year – whenever they come down to attend their adopt-a-plot

## WILDLIFE AND BUTTERFLY GARDEN [●●●]

Thanks to the Big Lottery Fund's Breathing Spaces project, Hayle in Bloom working with the Hayle Library in 2009 created a beautiful Wildlife and Butterfly garden overlooking the Copperhouse Pool. The Wildlife Garden won a Neighbourhood Award in 2010.



Designed to encourage a wide variety of wildlife, the area has seats and a shelter to allow quiet enjoyment of nature. Working with the Young Offenders Project we were also able to offer an opportunity for a useful community project.



# Environment

## RSPB ESTUARY CLEAN UPS [●●]

The screenshot shows the RSPB website's 'Volunteering' section. At the top, there is a navigation menu with links: HOME, ABOUT, ADVICE, BIRDS & WILDLIFE, JOIN, OUR WORK, RESERVES, SUPPORT US, SHOP, THINGS TO DO, and a search bar. Below the menu is a banner image with three photos: a hand typing on a keyboard, two people working outdoors, and a close-up of a person's face wearing glasses. The main heading is 'Volunteering' in a green box. On the left is a sidebar with 'Opportunities' and a list of categories: All opportunities, Campaigning and advocacy, Career in conservation, Community groups, From home, Office, retail and catering, Practical conservation and surveying, Publicity and promotions, Residential on a reserve, Team challenges and employee volunteering, and Youth and education. The main content area features a 'Rubbish Busters, Hayle Estuary' opportunity. It includes a 'PRINT' button, the location 'Hayle & Marazion', and sections for 'Why we want you', 'What's in it for you?', 'The skills you need', 'Your time', 'Who to contact', and 'Notes'. The 'Notes' section states: 'Bring water to drink, wear sturdy footwear, appropriate clothing, to protect against the weather and sun block when it is hot. Expenses will be re-imbursed where necessary.'

## RSPB NOTICE BOARDS [●●]

The screenshot shows a notice board for the RSPB Hayle Estuary nature reserve, specifically for Copperhouse Creek. The header includes the RSPB logo and the slogan 'for birds for people for ever'. The title is 'RSPB Hayle Estuary nature reserve Copperhouse Creek'. The main text describes the creek's history, stating that over the last 200 years, the tidal creek has been subject to dramatic changes. It mentions that the creek was once a vital waterway for the fishing industry but has since been reclaimed for development. The notice board also includes a map of the area, showing the creek's location relative to the town of Hayle and the surrounding residential areas. Below the map, there are three photographs of birds: a Redshank, a Shelduck, and a Golden Plover. The notice board is divided into several sections: 'Reserve fact file', 'Conservation management', and 'Notes'. The 'Reserve fact file' section lists key facts about the reserve, including its designation as a Site of Special Scientific Interest (SSSI) in 1984 and the fact that over 270 bird species have been recorded there. The 'Conservation management' section provides guidelines for visitors, such as not digging and staying on the paths. The 'Notes' section provides contact information for the RSPB.



## KEEP CORNWALL CLEAN WEEK [●●]



**CLEAN CORNWALL** do your bit don't drop it!

Home | Log in | Site Map Search Enter a Keyword

You are here: [Welcome to the Clean Cornwall Website/Clean Cornwall Week - Now a Bi-Annual Event!](#) Sunday 15th June 2008

**Welcome to the Clean Cornwall Website:**

About Us

**Clean Cornwall Week - Now a Bi-Annual Event!**

- Clean Cornwall Week - 12th to 20th April 2008
- Clean Cornwall Week - Gallery of Events

News and Events

Facts and Figures

Buy It

Let's Chat

Am I Bothered???

Contacts and Links

Nationwide - The bigger picture

**Clean Cornwall Week - Now a Bi-Annual Event!**

Fueled by an anti-litter passion and equipped with rubber gloves and high-utz vests the Clean Cornwall army of litter-picking volunteers is once again descending on Cornwall to rid it of unsightly rubbish.

Hundreds of willing volunteers were recruited to the campaign in its introductory year in 2007 and it is set to get bigger and better for its second year with not one, but two Clean Cornwall Weeks. The first week kicks off in April with a countywide spring clean from **12<sup>th</sup> to 20<sup>th</sup> April** and this will be followed by an end of season spruce up from 20<sup>th</sup> - 28<sup>th</sup> September.

During the two Clean Cornwall Weeks no discarded crisp packet or washed up piece of fishing net will be safe from the Clean Cornwall volunteers who will be collecting tons of rubbish at litter-picks across the county. Beaches, towns, countryside and roads are all on the hit-list and it is hoped that the weeks will result in Cornwall becoming one of the cleanest counties in the country.

A group of private and public sector business with a shared love of Cornwall and a drive to maintain its beauty are the inspiration behind Clean Cornwall Week and they are keen to get as many people involved as possible.

Teresa Timms, of VisitCornwall, a key Clean Cornwall partner calls for your help: "Cornwall is a special place and we want to keep it that way, if everyone spared a few hours to join a litter-pick think of the difference that we could make. Join an event taking place in your area or why not arrange your own - pull together a group of friends, get out there and make a difference!"

Take a look at the page to the left for the week in April to find out what **events** are already planned and for advice on organising your own.

**We now have certificates available for all who take part in your event, which are available to the right of this page!!**

**We have a target of 100 litter-pick events so if you are planning your own please let us know!**

**Documents/Downloads**

- Calendar of Events - April 2008 [610kb]
- Clean Cornwall Certificate [38kb]
- Blank Clean Cornwall Week Event Poster [88kb]
- North Hill Community Litter - Project Press Release [28kb]
- Waste Collection Details [30kb]
- Hints on organising a litter clean up [34kb]
- Litter Pick Approval and Consent Form [45kb]
- Litter Pick Risk Assessment [159kb]

**Get Acrobat Reader**

**Contacts:**

Clean Cornwall Group  
info@cleancornwall.org  
Full details for Clean Cornwall Group

## VOLUNTEER LITTER PICKERS [●●]

A number of Hayle in Bloom's members are also diligent litter pickers all year round. Mary Coad and Lyn Pollack, who have adopted the plot adjacent to the swimming pool, also take home several bags of rubbish every week. Ann Foreman, the adopt-a-plot coordinator, has also arranged litter picking days and now supports the Clean Cornwall initiative.

## WORKING WITH SCHOOLS [●●]

Ann Foreman has also given talks to children at local schools encouraging them to not throw litter in the first place and to be part of the solution by helping to pick up litter when they can. Naturally, Ann stresses safety and hygiene in her talks.





## Corporate Sponsors

### Copperhouse

Aspire Estate Agents  
Angove Sports  
Animal Veterinary Services  
Blushh  
Bradley's Estate Agents  
Copperhouse Alliance Pharmacy  
Copperhouse Post Office  
Cornwall Chiropractic  
Cornwall Hospice  
Dune Dress Shop  
Hayle Vets  
HQ Hairdressers

Marshall's Estate Agents

Mathews Estate Agents

Newell's Travel

Salt Gallery

Wharf

### Foundry

Biggleston's

Mr. B's Ice Cream

Footsteps

Foundry Chemist

Hayle Art Gallery

Murt's TV

### Other Partners and Sponsors

B&Q

Greenfield Plants

Hayle Town Council

Hayle Rose and Cabbage

Hayle Chamber of Commerce

Hotplants Plants Centre

Jewsons

Paradise Park

Cornwall Council

Wyevale Garden Centre

Haven Holiday Park

HAPP

Thanks to our corporate sponsors we have received over £2,000 in donations, and a lot more in supplies and services, during the year - and a large addition to our public flower displays.

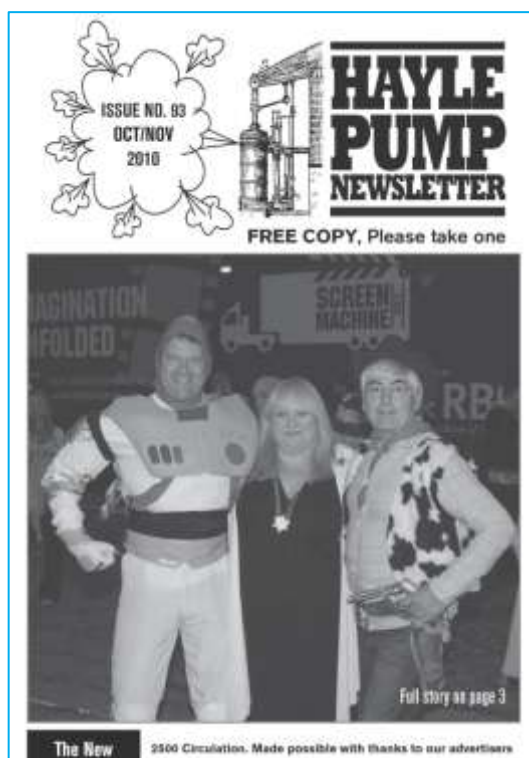
## Marketing and Publicity

### THE PRESS [●]

Hayle in Bloom maintains a good relationship with our local reporters and we have regular coverage of our activities and successes in The Cornishman, West Briton and the Hayle Times. Some of the clips relating to our activities are shown below in the Appendix.

### HAYLE PUMP [●]

Hayle is fortunate to have a community newsletter that has been run by volunteers since 1994. The circulation is now 2,500 and it is entirely funded by advertising. It provides a wonderful service to Hayle residents and is a favoured choice for advertising by local businesses. In fact, there is frequently not enough space for all those who would like to place an ad. In January of 2010 there was a fire in the premises where the Pump had its office and the team who had produced it for 15 years decided to retire. After a hiatus of three issues, the Pump is back with a new team!

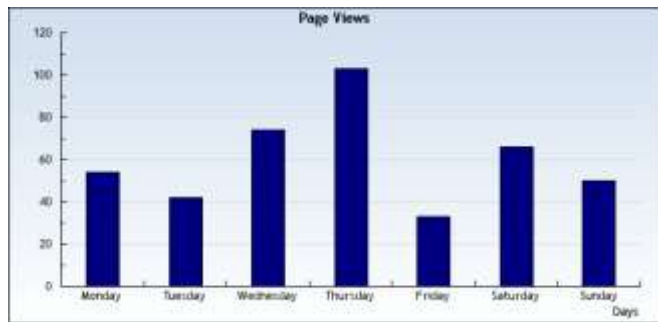


Hayle in Bloom has a regular entry in the Hayle pump



## OUR WEB SITE [●]

The Hayle in Bloom web site ([www.hayleinbloom.org.uk](http://www.hayleinbloom.org.uk)) has been in operation for almost five years and is a good way of communicating with members and friends. We have links from the Hayle Town Council web site and from other town and district sites. The site regularly gets 30-40 visits per day.



www.hayleinbloom.org.uk

# Hayle in Bloom

2010 GOLD AWARD & SWTA CUP WINNER  
2009 BRITAIN IN BLOOM FINALIST

2 July 2011 [www.hayleinbloom.org.uk](http://www.hayleinbloom.org.uk)

- safety first
- the committee
- friends of hayle in bloom
- our history
- articles
- photo gallery
- our awards
- community projects
- wildlife garden
- weed of the month
- sponsors
- contact us
- news archive
- 2011 competition
- 2010 competition
- 2009 competitions
- 2008 competition
- 2007 competitions
- interesting links



The Hayle in Bloom Flog.

The 2011 South West in Bloom Judging Date is Thursday, 14 July.

**12 days to go**

**WELCOME**

26 June 2011. Hayle in Bloom's 'Blooming Hayle' event was a huge success with thousands of people enjoying the stalls and entertainment along King George V Memorial Walk - in a car-free environment.



Hayle Town Band, Hayle Samba, Praise Hayle Male Choir, Hayle St. Piran Singers, Hayle Gig Racing Team, Hayle Surf Life Saving Club and the Camkie Clog Dancers provided entertainment all afternoon long. And the place was spotless at the end of the event!



**CHAIRMAN'S MESSAGE**  
Margaret thanks everyone for their support. Contact Margaret at [chairman@hayleinbloom.org.uk](mailto:chairman@hayleinbloom.org.uk)

**OUR HISTORY**  
Hayle's 'Britain in Bloom' Group was formed in January 2000. Read how we got started

**LATEST ADDITIONS**

- 2011 route
- our south west in bloom awards
- pictures added to the gallery

**MEETING DATES**  
Normally the last Monday of the month (except August), 7-00pm at Hayle Rugby Club.  
**Next meeting 11 July**

**HOW TO HELP**

- Give an hour when you can
- Adopt-a-Plot
- Help the gardeners
- Sponsor us
- Fund-raising
- Publicity
- Ideas

[Become a Friend!](#)  
[contact@hayleinbloom.org.uk](mailto:contact@hayleinbloom.org.uk)







## Conclusion and Future Developments

The goal of the Britain in Bloom campaign is to “*create lasting improvements to local environments for the benefit of local residents, workers and visitors, now and for future generations.*” Hayle in Bloom was formed in 2000 because we shared this goal and wanted to use the Britain in Bloom competition as a way of bringing the community together to achieve a worthy objective.

Now in our 11<sup>th</sup> year, there is no doubt that Hayle in Bloom has been very successful in making Hayle a nicer place to live in and to visit. We also feel that we have now reached sustainability with depth and breadth of membership, a large number of commercial sponsors and with a management team that changes and evolves as people come and go.

When I talk to visitors who are admiring our flowers, parks and gardens I often ask them how many professional gardeners they think we have. They are always amazed to hear that we have only two full-time gardeners and one additional helper during the summer months. This says two things: we have a wonderful team of gardeners, well-supported by the Cornwall Council Parks and Gardens Department; and we have a large number of enthusiastic volunteers at all levels of experience from primary school pupils to nonagenarians. Above all we have a great feeling of community.

What is a community? It is a place where people can feel joy and happiness in being with others of every capability, race, ability or disability. The Hayle in Bloom community has always welcomed members from the mentally and physically challenged, the probation service, youth services and schools and from all races and faiths – and we will continue to do so. I am proud of what we have achieved over the last ten years and look forward with enthusiasm to the next ten.

Our meetings are always full of ideas for new projects and these are some that have been short-listed for next year:

### WESTERN APPROACHES

Although the western approach to Hayle has some interesting features, such as the planned new EcoLodge, the historic listed Plantation and the restored Crimean Cannon, it needs some attention. We will look at planting, fence work and wall repairs and have already added a flower garden and floral boat.

### LADYSMITH GARDENS

There is a triangular area of land adjacent to the Hayle Railway Station that has been owned by the Town Council since 1940. Although it has a bench it is not very attractive and is one of the first green areas seen by train travellers on leaving the station. We are considering giving it a complete revamp.

### THE OLD HAWKINS MOTORS SITE ON HAYLE TERRACE

This site has been an eyesore and the source of much controversy since Hawkins moved to a new site on the outskirts of town. The plan was to build over 26 dwellings on the site but this was keenly resisted by town residents and also by the Town Council who did not want the view of Copperhouse Pool obliterated by high-rise dwellings. After six years of stop/start negotiations it has finally been agreed that six houses will be built on part of the site and



about 40 per cent will be given to the town. Hayle in Bloom will take on the responsibility of designing the area. Issues include dealing with the heavy pollution that dates back to mining in the 18<sup>th</sup> century and, more-recently, to the Second World War. It is likely that we will use tubs and raised beds to avoid disturbing the soil.



Most of the hard-topped surface on the old Hawkins Motors site will be given to the Town Council for the benefit of the people of Hayle. Hayle in Bloom will be responsible for landscaping the area.

In addition to specific projects we will continue to grow our community by reaching out to other groups, continuing our work with schools and by inviting anyone and everyone to join us.

We hope to spread the joy that we get from helping Hayle to bloom.

## Margaret Tanner

Chair, Hayle in Bloom, 2011



The landlord of the Royal Standard expresses some joy as he receives his delivery of hanging baskets!





# Appendices

## PRESS CLIPPINGS

# The Hayle Times

No. 4088

Friday, October 1st, 2010

Price 72p



**HAYLE** Mayor, Councillor John Bennett (seated centre) joined Hayle in Bloom Committee Members this week to congratulate the group on their success in this year's South West in Bloom competition. The town scooped six awards at a presentation event in Bath on September 16th including four Neighbourhood Awards. Hayle also took Gold in their category and the South West Travel Association Cup for Best in Group, winning the

SWTA Cup for the fourth time and for the third year in succession. Margaret Tanner, Chairman of the Hayle in Bloom committee, comments: "We are really very delighted to see how our work is appreciated. We are very lucky in Hayle to have such a dedicated and enthusiastic group of committee members, volunteers and gardeners who make it all possible." Pictured Cllr Bennett with the Hayle in Bloom committee members and their awards.

14 Thursday September 30, 2010 The Cornishman

CORNISH

visit our website [www.thisiscornwall.co.uk](http://www.thisiscornwall.co.uk)

## OUR CORNWALL

Send details of your community events to: [comishman@icdm.co.uk](mailto:comishman@icdm.co.uk)

# Flying start for Bloom initiative

COMMITTEES across Cornwall have been working tirelessly to get gardens and open spaces in tip-top shape for this year's first ever Cornwall in Bloom. The pioneering initiative is the first of its kind in the UK.

Cornwall in Bloom was created to encourage groups of local people to take pride in their communities.

The event is not only about flowers and gardens, but also about generally improving the environment through events such as group litter picks.

Judges were amazed by the level of entries after their assessments of more than 30 groups taking part in the inaugural event.

The awards ceremony will be held on October 6.

The initiative has been or-



ganised by Cornwall Council in partnership with Truro City Council and South West in Bloom (SWIB) and can act as a stepping stone for communities who may wish to enter the South West in Bloom awards in the future.

Jillian German, Cornwall Council Cabinet member for waste management, climate change and the historic environment, said: "It's fantastic to see what can be achieved by people right across Cornwall getting together and working

for the good of their communities. The results of the work carried out have been outstanding and I'm very much looking forward to the awards ceremony."

Richard Ridge, parks manager for Truro City Council and one of the people who came up with the concept of Cornwall in Bloom, said: "The high quality of the entries and the standards set this year have far surpassed our expectations and can only be beneficial to the environment in which we live, work and play."

There are five categories in which groups are assessed: a clean and tidy place, grow your own, good first impressions (flowers), my garden to great specs, local heroes. The best group in each category will be awarded £200.

## Garden expert Bob impressed by Phoenix's work



Phoenix Wilson, aged four, of St Just Primary School, collects her prize from the Royal Horticultural Society's South West in Bloom art competition BBC Gardeners' Question Time expert Bob Flowerdew.

A TALENTED school pupil from Cape Cornwall has won the St Just in Bloom art competition for the under-sixes.

Phoenix Wilson, aged four, was a pupil at St Just Nursery when she entered the contest.

Her cherry painting shows where food comes from and portrays a tomato plant and a pizza.

The painting was offered to

BBC's South West in Bloom competition, beating many youngsters across the region.

Phoenix attended the judging ceremony in Bath last week with her mum Tara and was presented with an RHS certificate and her painting in a frame by the BBC Gardeners' Question Time's Bob Flowerdew.

Her mum Tara Phyeck says her daughter is delighted to

have received this early recognition of her talent. She said: "She is constantly painting, drawing and making things at home. It is hard to get her to stop at times. Her father Mark enjoys painting and she often accompanies him outside to paint scenes at Cape Cornwall where we live, and she also enjoys recreating the artworks of artists we have hanging at home."

Are you a charity looking to recruit new volunteers?

Advertise for free\* in your local

**Cornishman**

Just log onto

[www.thisishookonline.co.uk](http://www.thisishookonline.co.uk)

\*size depending on display



Community involvement tree planting in St Just.





Cornishman 7.01.10



Hayle Mayor John Bennett (seated centre) joined Hayle in Bloom Committee Members to congratulate the group on their success.

HAYLE's famous floral displays and hours of hard work have been rewarded after the town scooped six awards in the 2010 South West in Bloom competition.

The team were delighted to hear that they had not only won gold but

they were also the South West Tourism Association Cup winners for the second year in a row. Additionally they won Neighbourhood awards for Adopt-a-Plotters, Library Wildlife Garden, Millpond and King George V Memorial Walk.

Cornishman 14.1.10



Richard Kemp, 12, was given a special Young Citizen award for his work with Hayle in Bloom.



# Transformed wasteland is a winner in first bloom awards

A NEGLECTED piece of wasteland in St Ives has won a trophy in the first Cornwall in Bloom awards.

The contest encouraged community groups and gardeners throughout the county to work together to spruce up their neighbourhoods and get gardens and open spaces into top shape.

Among them were Carnellis Community Corner Garden in West Cornwall which won the Grot Spots award.

The site had been an abandoned piece of ground for about 30 years and although the housing association owned land was trimmed on a regular basis it had not been cleared of litter or weeds within memory.

Miranda Phillips, who started the project in 2009 said: "The soil was full of broken glass, rusted metal and plastic bags. More than five sacks of these dangerous materials were dug out after the surface rubbish had been cleared."

"As soon as a rubbish bin was provided and gardening started the

By **KATRI IVONEN-GRAY**  
kivonen@c-dm.co.uk



amount of litter left on the site dropped dramatically.

"I did it because I just wanted to make a difference. I am going to use part of the prize money to start up a gardening club because there has not been one for 30 years.

"But I could have not done this without the support and encouragement of the people who live around the area."

The initiative was organised by Cornwall Council in partnership with Truro City Council and South West in Bloom (SWIB) and was designed to act as a starting point

for communities who may wish to enter the South West in Bloom awards.

The awards ceremony, hosted by BBC Radio Cornwall presenter Tracy Wilson, was at New County Hall last Wednesday. A special Young Citizen award was given to 12-year-old Richard Kemp for the hard work he has put in for Hayle in Bloom.

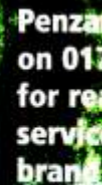
Julian German, Cornwall Council Cabinet member, presented the winning groups with cheques for £300, sponsored by local businesses.

He said: "I have been amazed by the work that has been done by so many people right across Cornwall. It just goes to show what can be achieved by people working together to improve the appearance of their neigh-

bourhood. I am very glad that we are able to recognise their hard work in this way."

Cornwall in Bloom is sponsored by the Seafood Restaurant, Padstow, St Austell Brewery, the Clean Cornwall Partnership, Visit Cornwall and Cornwall Council.

The scheme is also supported by Britain in Bloom South West, Britain in Bloom and the Royal Horticultural Society.



Cornishman 14.1.10

# Town narrowly misses gold in Bloom contest

CAMBORNE has struck silver again in the annual Britain in Bloom competition.

The presentation, along with community awards for Pengegon and Enys Road allotments, was made at the Assembly Rooms in Bath.

It is the fourth time the town has entered and the fourth that it has just missed out on gold, receiving a silver gilt award.

Orchid grower Kit Lindsay, who is a committee member of Camborne in Bloom, said: "We go for gold every year and will be trying again next year."

By **DAVID GREEN**  
e-mail: dgreen@c-dm.co.uk  
01209 215161

She attended the ceremony for South West winners with her husband Ron and fellow committee member Malcolm Richens.

Mrs Lindsay said: "It is a struggle because our budget is much smaller than many other towns. We are looking for more sponsors to help us but money is tight."

She added that the judges praised Camborne's entry. "It

was a bit like a school report, good but could do better, though it was only our fourth year."

Town councillor Jeff Collins, who is chairman of Camborne in Bloom, said he was delighted with the result.

"It's the fourth consecutive year that we have been awarded silver. We have had a few problems this year with the transition in local authorities.

"We are not getting the same service from Cornwall Council as we did from Kerrier council and we have to remember that

other towns can afford to spend much more than Camborne."

Hayle was awarded the South West Tourism Association Cup for a third year.

The town swept the board, receiving a gold for its overall entry, a neighbourhood award for the King George memorial walk and recognition also for Millpond Garden, Hayle, Adopt A Plotters project and the library wildlife garden.

● See page 46 for coverage of the Cornwall in Bloom celebrations as part of the West Briton's Our Cornwall campaign.

West Briton 14.10.10

West Briton 6.16.11

# Come celebrate the memorial walk

THE WHOLE of Hayle has been invited to celebrate the King George V Memorial Walk this weekend.

The special Sunday afternoon treat with music, stalls and demonstrations has been organised to take place between 2pm and 5pm by the Hayle in Bloom committee.

The Walk will be closed to traffic for the afternoon from about 2pm when the mayor of Hayle, John Bennett, officially opens the family event.

"This is a lovely part of Hayle and it is a rare opportunity to enjoy it without traffic and with lots of activities taking place," he said.

"I hope it will be enjoyed by visitors and locals alike."

There will be a string of stalls stretching along the walk from the open-air swimming pool, showcasing Hayle-based clubs, organisations and businesses.

Along the walk visitors will also find many stalls selling tasty food and refreshments.

Throughout the afternoon music will be provided by Hayle Town Band, Hayle Samba Band, Heyl St Piran Singers and Praise-Hayle Male Choir.

Parades along the walk with the bands are scheduled.

There will be activities on the water too, with Cornwall Jet Ski Club doing a demonstration, Hayle Gig and Rowing Club showing what their sport is all about, and a rescue demonstration by the Hayle

Surf Life Saving Club.

A History walk and a bird-watching session are also planned as part of the day's activities.

"We want everyone to come and join in, and help celebrate the wonderful King George V Memorial Walk," added Margaret Tanner, chairman of Hayle in Bloom.

And it is not too late to get involved either.

To book a stall space, ring Shirley Olds on 01209 715645.

Hayle in Bloom 2011





*Hayle Times & Echo 5.11.10*

**HAYLE in Bloom**, in conjunction with the Hayle branch of Rotary International, planted crocus bulbs outside Hayle Library on Saturday (30th Oct.). The planting is to help highlight Rotary International's campaign to eradicate childhood polio through vaccination. The crocus was chosen by the charity club as it's purple flower is symbolic of the 'purple pinkie', the dab of

purple dye applied to a vaccinated child. In total, throughout the UK, Rotary International Clubs will plant 5 million bulbs. Pictured on Saturday are volunteers of Hayle in Bloom and Chairman Margaret Tanner and Hayle Rotary Club President, David Raymer and Secretary, David Jones together with Hayle Library Assistants, Sue Whitehead and Vivian Heale.



**PLANTS ON THE TOWANS  
No 27 - COMMON  
BUTTERBUR**

So here we are in that quiet time of the annual cycle which is of course just as important as the spring, summer and autumn. We seem to live our lives independent of this cycle and no politician is elected without promising perpetual growth (SPRING). However we are beginning to see that this constant clamour for growth has its pay back time.

Meanwhile there is one plant flowering now on the Towans: the fabulously fragrant Common Butterbur (*Petasites hybridus*).

You can find her up behind the old power station and around the cricket club at this end.

Culpepper wrote "It is under the dominion of the Sun and therefore a great strengthener of the heart and cheers the vital spirit."

During the middle ages Butterbur was used to treat plague and fever. In the 17th century its use was noted in treating coughs, asthma and skin wounds.

The common name of Butterbur is attributed to a time when the large leaves, which come after the flower were used to wrap butter in warm weather. These days Butterbur is effectively used in the treatment of

migraine and hayfever. The root of the plant is used but it should be noted that there is a complex extraction process to remove dangerous alkaloids and on no account should it be taken by pregnant or breastfeeding mothers or those with liver or kidney problems.

**Go and smell those lovely flowers!**

*Hayle Pump Feb/Mar 11*







*Hayle Times & Echo 10.6.11*

**HAYLE in Bloom** volunteers took part in **The Big Weed on Sunday (June 5)**, an afternoon of weeding along the **King George V Memorial Walk, Hayle**. **Hayle in Bloom** Chairman, **Margaret Tanner** comments: **“The Walk runs along the length of the Copperhouse Pool and is a place very close to the hearts of Hayle residents, many of whom volunteer to help maintain the walk. It is a haven for sub-tropical plant species and many, many visitors and locals enjoy its beauty.”** **The Big**

**Weed** will also help to prepare the **Walk** as on the **26th June** the swimming pool end of the **Walk** will be the venue for a special community celebration featuring live music, dancing and stalls throughout the afternoon. **Margaret** says: **“It will be a chance to celebrate the success of Hayle in Bloom in the South West in Bloom competition but also for the people of Hayle to celebrate who they are.”** Pictured are volunteers during **Sunday’s Big Weed**.



**PLANTS ON THE TOWANS  
NO 29 - RIBWORT  
PLANTAIN**

Not to be confused with the large cooking banana, this little plant is the one you can make a kind of toy gun with. If you fold the stem over itself just behind the bud and pull, if you're lucky the bud will fly off up to ten foot away. I'm not sure if its included in next year's Olympic Games as a new sport.

Seriously, this little plant is the one to use for snake bites, bee and wasp stings, poisonous spiders' bites and stinging nettle rash. Place the bruised leaves over the bite and they will draw

out the poison. A poultice on all skin ailments and burns works well and a leaf placed on a cut stops bleeding quickly.

An ointment or lotion can be used to treat haemorrhoids and external ulcers. Taken internally it is diuretic, expectorant and decongestant and is commonly used for gastritis, peptic ulcers, diarrhoea, dysentery, irritable bowel syndrome, respiratory congestions, loss of voice and urinary tract bleeding (Chevalier 250-1). I recently read a report by a herbalist who found that Plantain was efficacious for menopause: a handful of leaves in a pot of hot water, leave to stand for 30 minutes.- Drink 3 or 4 cups when needed.

Psyllium husks are the dried seeds that come from plantain and they can be used as roughage in food for a healthy bowel.

Ribwort Plantain and his big brother, Greater Ribwort are the scourge of gardeners and their lawns, but are highly respected in folk medicine from Oregon to Vietnam...

Michael Locke.

Hayle Decorative Lights are hopefully arranging a raft race to raise funds.  
**Sunday 14th August**  
Details To Follow...

*Hayle Pump Jun/Jul 11*







*Hayle Times & Echo 10.6.11*

**THE** roundabout at the Loggans Moor end of Hayle now boasts a unique flower display to celebrate the Centenary Year of John Passmore Edwards. This year marks the 100th anniversary of the death of the philanthropist who was responsible for building many public libraries and buildings through the UK including Hayle's and St Ives' Passmore Edwards Institutes. Hayle's Institute recently re-opened after a series of extensive refurbishments.

Photograph: John Bennett

*John Passmore Edwards was a philanthropist, born in Cornwall, who died in 1911. A life-long champion of the working classes, Passmore Edwards is remembered as a generous benefactor. Over the space of 14 years, 70 major buildings were established as a direct result of his bequests. These included hospitals, 11 drinking fountains, 32 marble busts, 23 libraries, schools, convalescence homes and art galleries and the Passmore Edwards Institute in Hayle.*

## **Bloomin' heck, it's GOLD again!!**

On the morning of Thursday 16 September at the unearthly hour of 5.15 am, a small but intrepid band of Hayle in Bloom members gathered at the Commercial Road Car Park for the trip to Bath for the presentation ceremony of South West in Bloom 2010.

It was a long journey, but we eventually arrived in time for the 'In Your Neighbourhood' prize giving. This is a scheme whereby groups of people are rewarded for their hard work and dedication in making a small patch of their environment a better place. Hayle won four times -

for the King George V Memorial Walk, deemed outstanding, Millpond Gardens, Library Wildlife Garden and the Adopt-a-Plot Scheme. We were pleased that Camborne, Truro, St Just and St Ives also won awards.

After lunch, and a stroll around the beautiful city Bath, (and it really is lovely) we gathered once more in the Assembly Rooms.

I am delighted to report that Hayle won Gold, and in a very close finish, winning by only 2 points, we also won the SWTA cup. "Our Mayor, Cllr. John Bennett and chairman, Margaret Tanner, were there to receive the cup." The judge said, tongue in cheek, that it was the delicious lunch they were served that clinched it! Thank

Hayle in Bloom 2011

Hayle Pump Oct/Nov 10



you Paradise Park, I know he was joking but it WAS a delicious buffet, you did us proud again.

So we came home, whaked out but happy, I would just like to say "thank you" to everyone who contributed to our success.

*Sarah Turk*

As a child, the wicked magician always wanted to saw people in half.

Was he an only child?

No, he had lots of half brothers and sisters!



## Railway Siding and Historic Sand Drag Restoration Project

The weather gods smiled on Sunday, 9th of January and the Hayle Harbour Trust's project to clear up the footpath from Hayle Terrace to the railway station and uncover the historic sand drag got off to a great start. Geoff Henwood did an amazing amount of clearing using his tractor and flail and Chris Lello sent along a JCB, driven by Ian, and accomplished feats that a dozen volunteers would have been unable to do. On top of this, a good turnout of helpers enabled us to clear the footpath near the station where machinery could not go and we uncovered and cleared a lot of the sand drag by hand. We completely filled a huge skip provided by the Green Waste Company and were able to fill another skip provided by Jago Skip Hire with refrigerators, tyres and some other unidentified, but unrecyclable items.

ING RED UK (Hayle Harbour) Ltd. gave us a licence to do the work,

our risk assessor, Clive Polkinghorne, to ensure we had everything under control.

The pathway is now wide but very muddy. We hope to fix the path soon and to continue to clear up the area. In removing some of the young wood growth we will have removed some wildlife habitat. We deliberately left a lot, though, and we will plan to provide sustainable planting in the future that will support a wide range of animal habitats.

Keep an eye on [www.hayleharbourtrust.org.uk](http://www.hayleharbourtrust.org.uk) for future plans and make sure you let your Cornwall Councillors know that you want this land brought into public ownership in accordance with the planning agreement between ING and the Council.

**On behalf of the Hayle Harbour Trust, thank you to all of our volunteers, supporters and corporate donors.**

*John Bennett, Chairman, Hayle Harbour Trust, Ltd.*

## Calling All Gardeners

Hayle in Bloom would very much like a few more people to "Adopt a Plot". It does not involve heavy work. You would be allotted a flower bed in the town – convenient to you – and simply "dead head" and weed as you can manage. The judging is in July but we all help during the year to help our very hard-pressed professional gardeners.

On judging days – if you wish – you will meet the RHS judges and have a superb lunch at Paradise Park. If you are interested please contact Ann Foreman, 84 Hayle Terrace. Telephone **01736 754452**. Looking forward to hearing from you!

Hayle Pump Dec/Jan 11

Hayle Pump Feb/Mar 11

## Railway Siding & Historic Sand Drag Renovation & Restoration Project

Hayle Harbour Trust & ING RED UK (Hayle Harbour) Ltd

ING RED UK

'Working together for Hayle'





*Hayle Times & Echo 8.10.10*



**HAYLE** Mayor John Bennett and the Town Clerk, Eleanor Giggall, celebrate the progress that has been made in securing allotments for Hayle.

### Hayle get allotments – at last!

IN September, after six years of persistence with negotiations, legal delays, highways access and planning issues, the Mayor of Hayle, Cllr John Bennett was finally able to sign a long-term lease agreement for land to provide 40 allotments and to buy land for a cemetery extension. The clerk wasted no time in instructing the winning tenderer, C. J. Lello of Hayle, to go ahead with preparing the site on Lethleann Lane and work is already well underway.

Those on the allotment waiting list will be written to soon to ask them to select their plots: "It has taken a long time and

the Clerk has expended a huge amount of effort to get us to this point. But we will soon have one of the best allotment sites anywhere, with south-facing, good quality agricultural land. I can't wait to get my turnips in!", said the Mayor.

**THERE'S ALWAYS LOTS TO DO AT PARADISE PARK!**

**THE BIRD IN HAND YOUR LOCAL PUB WITH ITS OWN REAL ALE BREWERY** for quality beers

We're open every day - make a visit to Paradise Park a regular event with a great value Season Ticket or Return Ticket.

- Wonderful wildlife - rare tropical birds, choughs, red squirrels & farmyard friends
- JungleBarn indoor play and Paradise Island outdoor play
- Themed birthday party rooms, great fun and we clean up!
- New events timetable starts 1st April 2011
- Easter Egg Trail 9th - 25th April

Open every day at 10am Intolline: 01736 751020 [www.paradisepark.org.uk](http://www.paradisepark.org.uk)  
**Join us as a facebook friend!**

*The Official Allotment opening ceremony on 1 March 2011*

Hayle in Bloom 2011





# Chance to enjoy 'a lovely part of Hayle'

HAYLE in Bloom committee is hoping local people will join a special event on Sunday.

It will take place on the King George V Memorial Walk, which will be closed to traffic for the afternoon.

Mayor John Bennett said: "This is a lovely part of Hayle and it is a rare opportunity to enjoy it without traffic and with lots of activities taking place."

There will be a string of stalls stretching along the walk, showcasing Hayle clubs, organisations and businesses.

Music will be provided by the town band and Hayle Samba Band, with singing from Heyl St Piran Singers and Praise Hayle Male Choir.

There will be activities on the water with demonstrations by Cornwall Jet Ski Club, Hayle Gig and Rowing Club and a rescue demonstration by Hayle Surf Life Saving Club.

"We want everyone to come and join in, and help celebrate the wonderful King George V Memorial Walk," said Margaret Tanner, chairman of Hayle in Bloom.

● To book a stall space, ring Shirley Olds on 01209 715645.

West Briton 23.6.11



Hayle Times & Echo 17.6.11

THE King George V Memorial Walk, the setting for the forthcoming Hayle in Bloom event.

## Hayle in Bloom set for afternoon of fun, music and celebration

WITH signs and leaflets appearing all over the town, the people of Hayle are looking forward to a lovely Sunday afternoon treat, organised by the Hayle in Bloom committee, on 26th June.

The event will take place on the King George V Memorial Walk and will be opened by the mayor at 2 p.m. when the Walk will be closed to traffic for the afternoon - making it ideal for

families. Town Mayor, John Bennett, comments: "This is a lovely part of Hayle and it is a rare opportunity to enjoy it without traffic and with lots of activities taking place. I hope it will be enjoyed by visitors and locals alike."

There will be a string of stalls stretching along the Walk from the Swimming Pool end, showcasing Hayle clubs, organisations and businesses - and there will be plenty of food and refreshments. Throughout the

afternoon music will be provided by various local bands, choirs and singers.

There will also be activities on the water with demonstrations from the Cornwall Jet Ski Club, Hayle Gig and Rowing Club and Hayle Surf Life Saving Club.

Margaret Tanner, Chairman of Hayle in Bloom, adds: "We want everyone to come and join in, and help celebrate the wonderful King George V Memorial Walk. It's not too late to get involved either." To book a stall space, ring Shirley Olds on 01209 715645.

ED4-S2

West Briton Thursday June 30, 2011 9

## 'Feast for soul' at first Blooming event



The Carnkie Cloggers with mayor John Bennett, Councillor Anne-Marie Rante and Margaret Tanner, chairman of Hayle in Bloom. To buy the photograph or others taken on the day please visit [www.thiscornwall.co.uk/buyphoto](http://www.thiscornwall.co.uk/buyphoto)

"A FEAST for the heart and soul" was how one person described the first Blooming Hayle event on Sunday.

The people of Hayle turned out in their thousands to enjoy the event, organised by the Hayle in Bloom committee.

Activities all took place on or around the King George V Memorial Walk. At times the whole half-mile of the walk was full and buzzing with people.

Entertainment included music from Hayle Town Band and Heyl St Piran Singers.

Sylvia Turk and her over-60s' fitness group gave a demonstration of some of their routines and the Carnkie Cloggers performed further along the walk.

On the water, the Cornwall Jetskier Club gave impressive performances while Hayle Pilot and Gig Rowing Club

offered people the chance to have a go at rowing a gig. Hayle Surf Life Saving Club carried out a simulated rescue.

Mayor John Bennett described it as a great day "I do hope we can do this again next year."

"Hayle in Bloom had a great idea and thousands came and had a marvellous time. It was a great event and everyone I spoke to thoroughly enjoyed it."

## Everyone urged to join in special day on Memorial Walk

THE WHOLE of Hayle has been invited to celebrate the King George V Memorial Walk.

The event with music, stalls and demonstrations, has been organised by the Hayle in Bloom committee and is on Sunday, June 26 between 2pm and 5pm.

The walk will be closed to traffic for the afternoon from about 2pm when the mayor of Hayle, John Bennett, officially opens the family event.

"This is a lovely part of Hayle and it is a rare opportunity to enjoy it without traffic and with lots of activities taking place," he said. "I hope it will be enjoyed by visitors and locals alike."

There will be a string of stalls stretching along the walk from the open air swimming pool showcasing Hayle-based clubs, organisations and businesses.

Along the walk visitors will also find many stalls selling food and refreshments.

Throughout the afternoon music will be provided by Hayle Town Band, Hayle Samba Band, Heyl St Piran Singers and Praise Hayle Male Choir.

Parades along the walk with the bands are scheduled. There will be activities on the water, too, with Cornwall Jet Ski Club giving a demonstration, Hayle Gig and Rowing Club showing what their sport is all about, and a rescue demonstration by the Hayle Surf Life Saving Club.

### Birdwatching

A history walk and birdwatching sessions are also planned.

"We want everyone to come along and join in, and help celebrate the wonderful King George V Memorial Walk," said Margaret Tanner, chairman of Hayle in Bloom.

It is not too late to get involved. To book a stall space, ring Shirley Olds on 01209 715645.

West Briton 16.6.11

201  
Hayle in





# Hayle

Sheila Shields, Trelesick Road, Hayle

## HAYLE NEWS:

Hayle correspondent Sheila Shields asks that any Hayle news be sent direct to *The Cornishman* for the time being, as she is indisposed. Contributions can either be emailed direct to yournews@cornishman.co.uk; or posted or delivered to Buriton House, Alverton Street, Penzance TR18 2QP, to arrive no later than Tuesday morning on the week of publication. *The Cornishman* regrets that we are unable to accept copy for Down Your Way over the telephone, due to time constraints.

## CELEBRATION DAY:

Hayle in Bloom will be holding a celebration day at the King George V Memorial Walk this Sunday. The event will start at 2pm with the Hayle Town Band; Praise Hayle choir will be singing; and there will be stalls, food and entertainment through the afternoon until the event ends at 5pm with a fund-raising balloon launch.

Hayle Allotment Society will be running a stall, selling allotment produce and cakes to raise money and awareness of the Society, and to support Hayle in Bloom. Please let Aimee know if you can help or donate allotment produce and/or cakes; drop stuff off at Aimee's house on the morning (13 Caroline Row) or bring along on the day.

Shirley Olds leads the team of volunteers; if you would like to help, contact Shirley at shirley@haylein-bloom.org.uk



STALLS, all manned by local charities, groups and organisations, lined Hayle King George V Memorial Walk on Sunday (June 26) for the first ever 'Blooming Hayle' event organised by the Hayle in Bloom committee to celebrate their achievements in the Britain in Bloom competition and the town and people of Hayle. Pictured: left and right, Therese Jones and Sue Hill of the Carnick Cloggers, one of the event's entertainments and (centre left) Phyllis Blissett of the Hayle Branch RNLI, a volunteer for over fifty years, and (centre right) fellow RNLI volunteer and Chairman of the Hayle in Bloom committee, Margaret Tanner.

# 'Blooming Hayle'

- a feast for the heart and soul

A FEAST for the heart and soul' was how one person described the first 'Blooming Hayle' event on Sunday (June 26). The event was blessed with good weather and the people of Hayle turned out, literally, in their thousands to enjoy this new event organised by the Hayle in Bloom committee.

Events all took place along or around the setting of King George V Memorial Walk, across the water of Copperhouse Pool and at times the whole half-mile of the walk was full and buzzing with people.

The organised entertainment proved very popular and many people sat and enjoyed the music of Hayle Town Band as they launched the afternoon, as the Hayle Mayor, Cllr John Bennett, cut the ceremonial ribbon. After a seated concert, the band marched off down the Memorial Walk giving everyone the opportunity to enjoy and follow the music.

## RANG OUT

Hayle St Piran Singers then took over and their dulcet tones rang out across an appreciative crowd and of note was the hauntingly beautiful piece from 'Les Misérables' 'Bring Him Home'.

Next it was all change with Sylvia Turk and her Over 60s Fitness Group who gave a demo of some of their routines. One of the aims of the event was to showcase all the opportunities available in Hayle, and Sylvia and her team showed that the group is open for everyone to come and have fun and be a little more mobile. Meanwhile, the Carnick Cloggers were performing further along the Memorial Walk with lots of audience appreciation and participation.

## COME ALIVE

Over on the water, off the Harbour slip, there were activities all afternoon. "The harbour's really come alive this afternoon," said Peter Haddock, Harbour Master, who was overseeing events in the water. The Cornwall Jet-ski Club gave impressive performances of their craft, creating a backdrop for all the other activities. Highly popular all afternoon was the offer of Hayle Pilot and Gig Rowing Club to have a go at rowing a gig and people queued most of the afternoon

to do just that. "I can't believe how popular this has been" said Karen of the Gig Club. "We've had a fantastic time out on the water".

The Hayle Surf Life Saving Club gave a demo mid-afternoon of how they perform their rescues and, on such a warm day, so-one seemed to hesitate to dive in to take part in this.

Back on the Memorial Walk, it was time for the Hayle Samba Community Band to strike up and they blazed a trail along the Memorial Walk in the delight of stallholders and public. Back at the arena, Praise Hayle Male Choir assembled for the final performance of the afternoon and treated the gathered crowd to some beautiful singing.

## DELIGHTED

Commenting on the event, Margaret Tanner, Chairman of the Hayle in Bloom committee, said: "The Blooming Hayle event went really well. We're delighted by the attendance, and that people turned out and enjoyed a very happy afternoon in the sunshine."

Hayle's Mayor Councillor Bennett, commented: "What a great day! We had thousands of people filling the Memorial Walk and enjoying the entertainment and a wide variety of stalls. I do hope we can do this again next year. Hayle in Bloom had a great idea: 'Let's celebrate our beautiful King George V Memorial Walk and invite everyone along'. And thousands came and had a marvellous time. Congratulations to Margaret Tanner, Shirley Olds and her whole team."

"Before I even got to do the official opening, the King George V Memorial Walk was swarming with people enjoying the stalls. Once the band struck up, the clog dancing started, the choirs began singing and the surf lifesaving and gig rowing got going, we had thousands of happy people having a great afternoon out. There's nothing like the local event for bringing the smiles to people's faces. Well done to Hayle in Bloom for organising this great afternoon."

He finished: "We had thousands of people filling the King George V Memorial Walk from end to end. It was a great event and everyone I spoke to thoroughly enjoyed it. I'm sure we will be doing this again."



THE water around the Hayle slip was also busy for Blooming Hayle on Sunday, with demonstrations from the Cornwall Jet-ski Club, Hayle Pilot Gig Club who offered people the chance for a rowing try-out (pictured above), and Hayle Surf Life Saving Club (pictured below).



Hayle Times & Echo 1.7.11



## HAYLE ROSE & CABBAGE GARDENING CLUB

We had a very successful Plant Sale at Phillack Church Hall on Saturday 8th May.

Many thanks to everyone who donated plants, cakes and bric-a-brac, and who gave their time, and to everyone who came and supported us. Also thanks to the very helpful members of Hayle Allotment Society who assisted.

**Schedules and entry forms are available now.** You can pick one up at Bigglestons in Foundry, the Post Office in Copperhouse, the Post Office in Connor Downs or Hayle Library.

Our Annual Show this year is being held at Hayle Day Care Centre on Saturday 23rd July.

If you are unable to get to any of these places, please ring me on **01736 752319** and I will be happy to send you a copy.

Sarah Turk,  
Show Secretary



Hayle Pump Jun/Jul 11

