

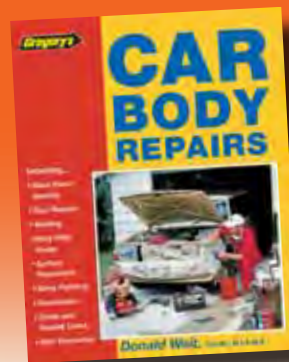
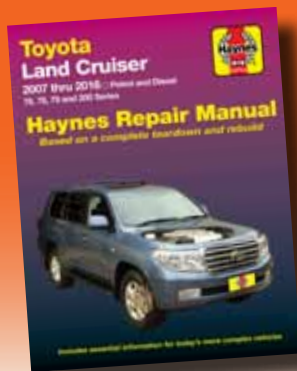
# Haynes



## Automotive Repair Manuals

# 2017

Including Haynes & Gregory's



**Every manual based on a complete teardown and rebuild!**



## Contents

- Automotive repair manuals, **3**
- V-Twin motorcycle engine model, **2**
- Manuals online, **29**
- Techbook series, **32**

## New titles from Haynes

Announcing the latest additions to the Haynes line of automotive repair manuals for the do-it-yourselfer:

- Toyota Land Cruiser, 2007 - 2016
- Toyota Kluger, 2003 - 2014 (NEW)
- Subaru Impreza, 2002 - 2011 (NEW)
- Subaru Impreza WRX, 2002 - 2014 (NEW)
- Subaru Impreza WRX STI 2004 - 2014 (NEW)
- Ford Falcon BA/BF/FG 2002 - 2014 (UPDATED)
- Toyota Hi-Lux, petrol & diesel, 2005 - 2015 (UPDATED)

## Manuals online

- 1 year subscriptions
- Full colour photographs
- Enlarge photos to see details
- Videos highlighting common jobs
- Easy search function
- Hyperlinks to instantly access other chapters



## Build your own working model

- Fully functional model
- Motorised
- Illuminating spark plugs
- Comes with a Haynes manual



Haynes V-Twin model engine

Part No: **HMV22**

## Haynes Australia

8/17 Willfox St  
Condell Park NSW 2200  
Australia

Phone: (02) 8713 1400

Fax: (02) 9708 3070

Email: [sales@haynes.com.au](mailto:sales@haynes.com.au)

Web: [www.haynes.com.au](http://www.haynes.com.au)





## Automotive Repair Manuals

Haynes offers the best coverage for cars, trucks, vans and SUVs on the market today.

Each manual is written and photographed from "hands-on" experience gained by a complete teardown and rebuild of the vehicle.

The first Haynes manual was written this way over 50 years ago, and we continue to produce all manuals this way, making Haynes the world leader in automotive repair information.



### ALFA ROMEO

#### Alfasud & Sprint Veloce 1974-1988 (UK)

Sedan, Hatchback, Sprint Coupe  
4 cyl SOHC carburettor engines.  
1186cc (301.00, 301.02, 301.04)  
1286cc (301.80, 301.84)  
1351cc (301.60, 301.64, 301.68)  
1490cc (301.24, 301.28, 301.46)  
ISBN: 978-1-85010-445-2

Book No: **292**

#### Alfetta & GTV (4cyl) 1973-1987 (UK)

Carburettor & Motronic Fuel Injected  
1570cc, 1779cc, 1962cc 4cyl DOHC  
Does not Cover 2.5l GTV6  
ISBN: 978-1-85010-448-3

Book No: **531**

### AUDI

#### 80 1972-1979 (UK)

Sedan & Wagon  
4 cyl SOHC  
1297cc (ZA ZF)  
1471cc (ZB ZC ZD ZE XW XV XY XZ)  
1588cc (XX YN YP YS YG YK YH) both carb & fuel inj included  
ISBN: 0-85696-207-4

Book No: **207**

#### 80, 90 & Coupe 1979-1988 (UK)

4 cyl petrol  
Coupe 1981-88 -1595,1781 & 1984cc Sedan  
90 1988-90 - 1984, 2226, & 2309cc Sedan  
90 1987-90 - 1194, 2226 & 2309cc  
Does not cover Quattro models  
ISBN: 978-1-85010-518-3

Book No: **605**

#### 80, 90 & Coupe 10/1986-1990 (UK)

Sedan 90 6/1987-90  
Coupe 11/1988-90  
4 cyl: 1595cc (RN)  
1781cc ((RU, DC, NE, PM, JN)  
1984cc (3A)  
5 cyl: 1994cc (PS)  
2226cc ((KV)  
2309cc (NG, 7A)  
Does not cover Quattro or diesel models  
ISBN: 978-1-85960-177-8

Book No: **1491**

#### 100 1969-1976 (UK)

Sedan & Coupe  
Petrol: 1760cc (ZX, ZU, ZV, ZZ, ZS, ZY, ZT)  
1782cc (ZM)  
1871cc (ZL, ZW, ZJ, ZK, ZN, ZP)  
ISBN: 0-85696-500-6

Book No: **162**

#### 100 & 200 1982-1990 (UK)

100 Sedan & Wagon (1982-90)  
200 (Inc Turbo) Feb 1984-89  
1781, 1921, 1994, 2144, 2226 & 2309cc petrol  
Does not cover Quattro models  
ISBN: 978-1-85960-172-3

Book No: **907**

#### A3 1996-2003 (UK)

Petrol: 1.6L 4cyl SOHC 1.8L 4cyl DOHC 16v non-turbo and turbo.  
Diesel: 1.9L 4cyl SOHC D.I. turbocharged  
Does not cover Quattro, S3 or models with Tiptronic transmission  
ISBN: 978-1-84425-253-4

Book No: **4253**

#### A3 2003-2008 (UK)

Petrol: 1.6L SOHC (BGU, BSE, BSF)  
1.6L DOHC (BAG, BLF, BLP)  
2.0L non-turbo (AXW, BHD, BLR, BLX, BLY, BMB, BVY, BVZ)  
2.0L turbo (AXX, BPY, BWA, CAWB, CBFA, CCTA)  
Diesel: 1.9L (BKC, BLS, BXE)  
2.0L SOHC (BMM, BRA)  
2.0L DOHC (AZV, BKD, BKQ, BMN, BUY)

Does not cover Cariolet, Quattro, S3, 1.4 litre, 1.8 litre or 3.2 litre engines

ISBN: 978-0-85733-994-2

Book No: **4884**



**AUDI (CONTINUED)**

**A4 1995-2000 (UK)**

1.6 & 1.8 inc turbo petrol (Not V6) & 1.9 litre turbo diesel  
Petrol: 1595cc SOHC (ADP & AHL), 1781cc DOHC (ADR, APT, APW, AFY), 1781cc DOHC EFI Turbo (AEB AJL)  
Diesel: 1896cc (1Z, AFN, AFF, AHU, AHH)  
*Does not cover S4, V6 petrol or Quattro(4X4)*  
ISBN: 978-1-84425-743-0

Book No: 3575

**A4 1996-2001 (US)**

1.8 litre inc turbo, 2.8 litre V6 & Quattro  
4 Cyl: 1.8 litre DOHC (AEB, ATW)  
V6: 2.8 litre SOHC 12v (AFC), 2.8 litre V6 DOHC 30v (AHA, ACK, ALG, APR, ATQ, AQD)  
*Does not cover diesel engine or S4 model*  
ISBN: 978-1-56392-703-4

Book No: 96023

**A4 B6 2001-2004 (UK)**

Sedan & Wagon (Avant). Also covers major mechanical features of Cabriolet.  
Petrol: 1.8 litre (AVJ, AMB, BFB, BKB, BEX), 2.0 litre (ALT, AWA)  
Diesel: 1.9 litre (AVB, BKE, BRB, AVF, AWW)  
*Does not cover Quattro or S4 models, 1.6 litre or 6 cyl or V8 petrol engines or 6-cyl diesel engines*  
ISBN: 978-1-84425-609-9

Book No: 4609

**A4 B7 2005-2008 (UK)**

Sedan & Wagon (Avant)  
Petrol: 1.8 litre (AVJ, BFB, AMB, BEX), 2.0 litre (ALT, BPJ, BYK, BGB, BPG, BWE, BWT)  
Diesel: 1.9 litre (AVB, BKE, BRB, AVF, AWW), 2.0 litre (BVG, BVF, BNA, BRC, BRF, BLB, BPW, BRE, BVA, BRD)  
*Does not cover Quattro, RS4, S4 or Cabriolet, Tiptronic transmission. 1.6 litre or 6 cyl or V8 engines*  
ISBN: 978-1-84425-885-7

Book No: 4885

**100 & A6 1991-1997**

Sedan and wagon  
Petrol: 1.8 litre (1781cc), 2.0 litre (1984cc) and 2.3 litre (2309cc)  
Turbo-Diesel: 1.9 litre (1896cc) and 2.5 litre (2460cc)  
*Does not cover V6 engine Quattro, S4 or S6*  
ISBN: 978-1-85960-504-2

Book No: 3504

**BMW**

**1500, 1502, 1600, 1602, 2000 & 2002 1959-1977 (US)**

2 & 3 door versions, wagons  
Petrol: 1499cc, 1573cc, 1990cc.  
*Does not cover 2002 Turbo.*  
ISBN: 978-085696-240-0

Book No: 18050

**316, 320 & 320i E21 1975-1983 (UK)**

Petrol: 1.6L (1573cc), 1.8L (1766cc), 2.0L (1990cc)  
*Does not cover 318 models*  
ISBN: 978-1-85010-401-8

Book No: 276

**1 Series E81/E82/E87 2004-2011 (UK)**

116i, 118i, 120i, 118d & 120d  
Petrol: 1.6 litre (N45 B16, N45T B16, N43 B16), 2.0 litre (N43 B20, N46 B20, N46T B20)  
Diesel: 1.9 litre (M47 D20, N47 D20T2)  
*Does not cover 125i, 130i or 135i 6cyl, 123d diesel or convertible models*  
ISBN: 978-1-84425-918-2

Book No: 4918

**3 & 5 Series E28/E30/E34 1981-1991 (UK)**

3 Series: (E30) 316, 316i, 318i, 320i, 325i; Sedan, Touring and Convertible, (83-91)  
5 Series: (E28) 518, 518i, 525i, 528i, 535i, M535i; Sedan, (81-88)  
5 Series: (E34) 518i, 520i, 525i, 530i, 535i; Sedan and Touring, (88-91)  
1.6 litre (1596cc), 1.8 litre (1766 and 1795cc), 2.0 litre (1990cc), 2.5 litre (2494cc), 2.8 litre (2788cc), 3.0 litre (2986cc) and 3.5 litre (3430cc) SOHC  
*Does not cover models with DOHC, V8 or diesel engines, or 4x4*  
ISBN: 978-1-85960-236-2

Book No: 1948

**3 & 5 Series E28/E30/E34 1984-1992 (US)**

3 Series (E30) 318i (84-85); 325, 325e, 325es (84-88), 325i, 325is, 325iC (87-91)  
5 Series (E28) 528e (82-88); 533i (83-84); 535i, 535is (85-92)  
5 Series (E34) 525i (89-90); 535i, 535is (85-92)  
4 cyl: 1.8 litre  
6 cyl: 2.5 litre, 2.7 litre, 3.4 litre, 3.5 litre  
ISBN: 978-1-56392-020-2

Book No: 18020

**3 Series E36 1991-1999 (UK)**

Sedan & Coupe; 316e, 316i, 318i, 320i, 323i, 325i & 328i.  
4 cyl: 1.6 litre (1596cc), 1.8 litre (1796cc) & 1.9 litre (1895cc), inc. 16-valve.  
6 cyl: 2.0 litre (1991cc), 2.5 litre (2494cc) & 2.8 litre (2793cc).  
*Does not cover features specific to Convertible, Touring (Wagon), Compact, M3 or Diesel models*  
ISBN: 978-1-84425-602-0

Book No: 3210

**3 Series E46 1998-2006 (UK)**

316i 318i 320i 323i 325i 328i 330i  
Salon, Coupe & Touring  
4 cyl: 1.8, 1.9 & 2.0 litre incl. Valvetronic  
6 cyl: 2.2, 2.5, 2.8 & 3.0 litre  
*Does not cover 1.6 litre petrol engine, diesel engines, Compact, Convertible or M3*  
ISBN: 978-1-85733-949-2

Book No: 4067

**3 Series E90/E91 2005- 2008 (UK)**

Sedan (E90) & Touring (E91)  
318i, 320i, 325i & 330i petrol and 318d, 320d, 325d & 330d diesel.  
Petrol: 2.0 litre (1995cc), 2.5 litre (2497cc), 3.0 litre (2996cc).  
Diesel: 2.0 litre (1995cc), 3.0 litre (2993cc)  
*Does not cover 320Si, 335i, 335d, M3, Coupe, Convertible or models with xDrive*  
ISBN: 978-1-84425-782-9

Book No: 4782

**525, 528 & 528i E12 1973-1981 (UK)**

Petrol engines SOHC  
2494cc  
2788cc  
2986cc  
ISBN: 978-1-85010-430-8

Book No: 632

**520i, 525e E28 1981-1988 (UK)**

1990cc B20 6 cyl SOHC injected  
2693cc B27 6 cyl SOHC FI  
*Does not cover 525i*  
ISBN: 978-1-85010-560-2

Book No: 1560

**5 Series E39 1996-2003 (UK)**

520i, 523i, 525i, 528i, 530i, 6 cylinder  
1991cc (M25 B20, M52TU B20), 2171cc (M54 B22), 2494cc (M52 B25, M52TU B25, M54 B25), 2793cc (M52TU B28), 2979cc (M54 B30)  
*Does not cover 535i, 540i, M5 with V8 petrol engines, diesel models*  
ISBN: 978-1-84425-151-3

Book No: 4151



**5 Series E60/E61 2003-2010 (UK)**

520d, 525d & 530d

Diesel: 2.0 litre (N47 D20, M47 D20) 4cyl

2.5 litre (M57 D25) 6cyl

3.0 litre (M57 D30) 6cyl

*Does not cover 525d twin turbo 3.0 litre or xDrive transmission*

ISBN: 978-1-84425-901-4

Book No: **4901**

**Z3 E36/E37 1996-1998 (US)**

Z3 Sports

4 cyl: 1.8 litre (M42)

1.9 litre (M43)

V6: 2.5 litre (M50)

2.8 litre (M52)

ISBN: 978-1-56392-376-0

Book No: **18021**

**Z4 E46 2003-2005 (US)**

2494cc (M25TU B25, M54 B25)

2793cc (M25TU B28)

2979cc (M54 B30, M56 B25)

ISBN: 978-156392-966-3

Book No: **18022**

**CHEVROLET**

**Camaro Z28 1970-1981 (US)**

Covers Camaro, Z28, Type LT, Rally Sport, & Berlinetta.

V8 engines: 267ci, 305ci, 307ci, 350ci, 402ci

ISBN: 978-0-85696-881-5

Book No: **24015**

**Camaro & Z28 1982-1992 (US)**

All petrol engines: 2.5L 4cyl OHV (Code L4)

2.8L & 3.1L V6 OHV 5.0L & 5.7L V8 OHV

ISBN: 978-1-56392-060-8

Book No: **24016**

**Chevrolet Camaro & Pontiac Firebird 1993-2002 (US)**

Petrol engines: 3.4L V6, 3.8L V6, 5.7L V8 GEN 1, 5.7L V8 GEN 2.

ISBN: 978-1-56392-556-6

Book No: **24017**

**Corvette 1968-1982 (US)**

All V8 OHV petrol engines:

Small-block 305ci, 327ci, 350ci

Big-block 427ci, 454ci.

ISBN: 978-1-85010-723-1

Book No: **24040**

**Corvette 1984-1996 (US)**

5.7L (350ci) V8 OHV petrol eng. LT1 & LT4 introduced in 1996. Covers 4 speed & 6 speed manual and auto gearboxes.

*Does not contain information on ZR-1 model*

ISBN: 978-1-56392-226-8

Book No: **24041**

**Chevrolet Full Size Sedans 1969-1990 (US)**

Impala, Caprice, Biscayne Bel Air, Sedans & Wagons.

6cyl: 3.8L & 4.3L V6 OHV;

V8: 4.4L, 5.0L, 5.4L, 5.7L, 6.5L, 6.6L, 7.0L, 7.4L

229/231/262/267/305/307/327/350/396/400/402/427/454 C.I.

*Does not cover diesel engines or front-wheel-drive models*

ISBN: 978-1-85010-636-4

Book No: **24045**

**Chevrolet Impala SS, Caprice & Buick Roadmaster 1991-1996 (US)**

V8 engines

*Does not cover V6 models*

ISBN: 978-1-56392-249-7

Book No: **24046**

**Lumina 1995-2001 Monte Carlo 1995-2005 Impala (FWD) 2000-2005 (US)**

*Does not cover rear wheel drive Impala or super charged models*

ISBN: 978-1-56392-632-7

Book No: **24048**

**Chevrolet & GMC Pick-ups 1967-1987 (US)**

Blazer, Suburban, Jimmy 2WD & 4WD.

Inline 6cyl: 230, 250, 292 Ci

V6: 262 Ci.

V8: 283, 305, 307, 327, 350, 396, 402, 454 Ci

*Does not cover diesels or GMC 305ci petrol engine*

ISBN: 978-1-85010-764-4

Book No: **24064**

**Chevrolet & GMC Pick-ups 1988-2000 (US)**

2WD and 4WD

All models 1988-98. C/K Classic 1999-00.

Suburban (1992-99), full size Blazer & Jimmy (1992-94), Tahoe & Yukon (1995-99).

4.3L V6 OHV; 5.0L, 5.7L, 7.4L V8 OHV.

*Does not cover 1999-00 OHV, 1999-00 Silverado or Sierra, diesel engines or C3HD heavy duty*

ISBN: 978-1-56392-426-2

Book No: **24065**

**Chevrolet Silverado & GMC Sierra Pick-ups 1999-2007 (US)**

2WD and 4WD

Chevrolet Silverado and GMC Sierra 1999-06; Chevrolet Silverado Classic and GMC Sierra Classic 2007;

Chevrolet Suburban and Tahoe, GMC Yukon, Yukon XL, Sierra Denali and Yukon Denali 2000-06;

Chevrolet Avalanche 2002-06.

4.3L V6 OHV; 4.8L, 5.3L, 6.0L V8 OHV.

*Does not cover 1999 and 2000 C/K Classic, 1999 and 2000 Sierra Classic, diesel, 8.1L engine, CNG, hybrids, models equipped with rear-wheel steering or heavy-duty model information*

ISBN: 978-1-56392-681-5

Book No: **24066**

**Chevrolet Silverado & GMC Sierra Pick-ups 2007-2012 (US)**

Petrol models

Silverado, GMC Sierra and Sierra Denali, Suburban, Tahoe, GMC Yukon, Yukon XL, Yukon Denali, and Avalanche

*Does not include 2007 Silverado Classic or Sierra Classic, diesel models, CNG models, hybrids or models equipped with rear-wheel steering*

ISBN: 9 7815639 2972-4

Book No: **24067**

**S-10 & GMC S-15 Pick-ups & Olds Bravada 1982-1993 (US)**

S-10, GMC S-15 & Sonoma pick-ups 1982-93;

S-10 Blazer & S-15 Jimmy 1983-94;

Olds Bravada 1991-94

*Does not include Typhoon and Syclone models or diesel engine information*

ISBN: 9 7815639 2116-2

Book No: **24070**

**S-10 & GMC Sonoma Pick-ups 1994-2004 (US)**

S-10 and Sonoma pick-ups 1994-04;

Chevrolet Blazer & GMC Jimmy 1995-04;

GMC Envoy 1998-01;

Olds Bravada & Isuzu Hombre 1996-01

ISBN: 978-1-56392-173-1

Book No: **24071**

**TrailBlazer & GMC Envoy 2002-2009 (US)**

TrailBlazer, TrailBlazer EXT, GMC Envoy, GMC Envoy XL, Oldsmobile Bravada and Buick Rainier

2WD and 4WD models

4.2L in-line 6-cylinder,

5.3L & 6.0L V8 engines

ISBN: 978-1-56392-961-8

Book No: **24072**





**CHEVROLET (CONTINUED)**

**Chevrolet & GMC Vans 1968-1996 (US)**

V6 – 262CI; STRT6 – 230, 250, 292 CI;  
V8 – 283, 305, 307, 350, 400 CI  
ISBN: 978-1-56392-197-1

Book No: **24080**

**Chevrolet Express & GMC Savana 1996-2010 (US)**

Chevrolet Express and GMC Savana full-size vans.

*Does not cover all wheel drive, diesel or 8.1L engine models*

ISBN: 9 781 563 92887-1

Book No: **24081**

**CHRYSLER**

**New Yorker 1988-1993 (US)**

Imperial, Fifth Avenue, LeBaron, Landau & Sedan 1990-93

Dodge Dynasty 1988-93

ISBN: 978-1-56392-058-5

Book No: **25020**

**LHS, Concorde, New Yorker, Dodge Intrepid & Eagle Vision 1993-1997 (US)**

“LH” platform models

ISBN: 978-1-56392-316-6

Book No: **25025**

**LHS, Concorde, 300M & Dodge Intrepid 1998-2003 (US)**

“LH” platform models

ISBN: 978-1-56392-493-4

Book No: **25026**

**300 and Dodge Charger & Magnum 2005-2010 (US)**

Chrysler 300 (2005 thru 2009),  
Dodge Charger (2006 thru 2009) and  
Magnum (2005 thru 2008)

*Does not cover SRT8, diesel engine or AWD models*

ISBN: 978-1-56392-855-0

Book No: **25027**

**Chrysler Mid-Size Front-Wheel Drive 1982-1995 (US)**

LeBaron Sedan 1982-89

LeBaron coupe & convertible, LeBaron GTS,  
E Class, New Yorker (4-cyl), Dodge 400 &  
600, Lancer and Plymouth Caravelle

2.2, 2.5 and 2.6 litre

ISBN: 978-1-56392-476-7

Book No: **25030**

**Sebring and Dodge Stratus & Avenger 1995-2002 (US)**

Sebring convertible, coupe & sedan 1995-05

Stratus coupe & sedan 2001-05

Avenger 1995-00

*Does not cover Flexible Fuel Vehicles*

ISBN: 978-1-56392-461-3

Book No: **25040**

**Neon 1995-1999 (US)**

Dodge & Plymouth Neon models 1995-99

ISBN: 978-1-56392-245-2

Book No: **30034**

**Neon 2000-2005 (US)**

2.0 SOHC 16v engines

*Does not cover SRT-4 models*

ISBN: 978-1-56392-596-2

Book No: **30036**

**PT Cruiser 2001-2010 (US)**

2.0, 2.4 & 2.4 turbo Petrol engines

ISBN: 978 1 56392 963-2

Book No: **25035**

**Voyager 1996-2002 (US)**

Chrysler Town & Country Mini-Vans, Dodge  
Caravan, Grand Caravan, Plymouth Voyager

*Does not cover all-wheel drive or alternative fuel models*

ISBN: 978-1-56392-469-9

Book No: **30011**

**Voyager 2003-2007 (US)**

Town & Country, Country Mini-Vans

Dodge Caravan, Chrysler Voyager

*Does not cover all-wheel drive or diesel engine models*

ISBN: 978 1 56392 850-5

Book No: **30013**

**Pick-ups 1974-1993 (US)**

Full-size pick-ups, Ramcharger & Trailduster.

*Does not include diesel engines*

ISBN: 978-1-56392-202-2

Book No: **30040**

**Pick-ups 1994-1996 (US)**

All full-size pick-ups, gasoline and Cummins  
turbo-diesel engines

ISBN: 978-1-56392-171-5

Book No: **30041**

**Pick-ups 2002-2008 (US)**

Full-size pick-ups, V6, V8 and V10 petrol and  
Cummins turbo-diesel engines, 2WD & 4WD

*Does not include SRT-10 models*

ISBN: 978-1-56392-742-3

Book No: **30042**

**Ram 50/D50 Pick-up & Raider and Plymouth Arrow Pick-ups 1979-1993 (US)**

Dodge & Plymouth models

*Does not include diesel engines*

ISBN: 978-1-56392-085-1

Book No: **30045**

**CITROËN**

**2CV 1967-1990 (UK)**

2CV, 2CV4 & 2CV6; Ami 6 & 8, Sedan &  
Wagon; Dyane 4 & 6

Petrol: 425cc, 435cc & 602cc.

*Does not cover Visa or Ami Super. Does not fully cover 2CV Van, Fourgonette or Acadiane*

ISBN: 978-1-85010-693-7

Book No: **196**

**AX 1987-1997 (UK)**

Hatchback

Petrol: 1.0 litre (954cc)

1.1 litre (1124cc)

1.4 litre (1360cc).

Diesel: 1.4 litre (1360cc). Also covers most features of 1.5 litre (1527cc) Diesel.

*Does not cover features specific to Van*

ISBN: 978-1-85960-594-3

Book No: **3014**

**Berlingo & Partner 1996-2010 (UK)**

Citroën Berlingo Multispace & Van and  
Peugeot Partner Combi & Van

Petrol: 1.4 litre (1360cc)

1.6 litre (1587cc)

Diesel: 1.8 litre (1769cc)

1.9 litre (1868cc & 1905cc)

2.0 litre (1997cc), including turbo

*Does not cover 1.8 litre (1761cc) petrol*

ISBN: 978-1-84425-882-6

Book No: **4281**

**BX 1983-1994 (UK)**

Hatchback, Wagon, GTI

Petrol: 1.4 litre (1360cc)

1.6 litre (1580cc)

1.9 litre (1905cc)

*Does not cover 4WD*

ISBN: 978-1-85010-445-2

Book No: **908**

**C1 2005-2011 (UK)**

Hatchback

Petrol: 1.0 litre (998cc)

ISBN: 978-1-84425-922-9

Book No: **4922**



**C3 2002-2009 (UK)**

Hatchback, including XTR  
 Petrol: 1.1 litre (HFX/TU1JP)  
 1.4 litre SOHC 8V (KFV/TU3JP)  
 1.4 litre DOHC 16V (KFU/ET3J4/  
 ET3JA)  
 1.6 litre (NFU/TU5JP4)  
 Diesel: 1.4 litre SOHC 8V (8HX/8HZ/DV4TD)  
 1.4 litre DOHC 16V (8HY/DV4TED4)  
 1.6 litre turbo (9HY/9HZ/DV6TED4)  
 1.6 litre turbo/intercooler (9HX/  
 DV6ATED4)

ISBN: 978-1-84425-890-1

Book No: **4890**

**C4 Petrol & Diesel 2004-2010 (UK)**

Hatchback & Coupé  
 Petrol: 1.4 litre (1360cc)  
 1.6 litre (1587cc)  
 2.0 litre (1997cc)  
 Diesel: 1.6 litre (1560cc)  
 2.0 litre (1997cc).

*Does not cover BioFlex models, C4 Picasso or Grand Picasso*

978-085733-576-0

Book No: **5576**

**C5 2001-2008 (UK)**

Petrol & Diesel. Hatchback & Wagon  
 Petrol: 1.8 litre (1749cc)  
 2.0 litre (1997cc).  
 Diesel: 1.6 litre (1560cc)  
 2.0 litre (1997cc)

*Does not cover models with 3.0 litre V6 petrol engine or 2.2 litre diesel engine*

ISBN: 978-1-84425-745-4

Book No: **4745**

**C15 Van 1989-1998 (UK)**

Van, including Champ  
 Petrol: 1.0 litre (954cc)  
 1.1 litre (1124cc).  
 Diesel: 1.7 litre (1769cc)

*Does not cover features specific to Pick-Up & Chassis Cab*

ISBN: 978-1-85960-509-7

Book No: **3509**

**CX 1975-1988 (UK)**

CX 2000, CX 2200, CX 2400, CX 25  
 Sedan & Wagon  
 Petrol: 2.0 litre (1985cc)  
 2.2 litre (2175cc)  
 2.3 litre (2347cc)  
 2.5 litre (2500cc) OHV, inc. Turbo.

*Does not cover 2.0 litre (1995cc) or 2.2 litre (2165cc) OHC engines fitted to CX 20 & CX 22, Athena & some Reflex models*

ISBN: 978-1-85010-449-0

Book No: **528**

**Saxo 1996-2004 (UK)**

Hatchback, including VTR, VTS  
 Petrol: 1.0 litre (954cc)  
 1.1 litre (1124cc)  
 1.4 litre (1360cc)  
 1.6 litre (1587cc), inc. 16v.  
 Diesel: 1.5 litre (1527cc)

ISBN: 978-1-84425-280-0

Book No: **3506**

**Xantia 1993-2001 (UK)**

Hatchback and Wagon  
 Petrol: 1.6 litre (1580cc)  
 1.8 litre (1761cc)  
 2.0 litre (1998cc)  
 Diesel: 1.9 litre (1905cc)  
 2.0 litre (1997cc) HDi  
 2.1 litre (2088cc) inc. turbo versions

*Does not cover 3.0 litre V6, turbo or 2.0 litre VSX 16-valve (150 bhp) petrol models*

ISBN: 978-1-84425-181-0

Book No: **3082**

**Xsara 1997-2000 (UK)**

Hatchback, Wagon & Coupe  
 Petrol: 1.4 litre (1360cc)  
 1.6 litre (1587cc)  
 1.8 litre (1761cc)  
 2.0 litre (1998cc)  
 Diesel: 1.9 litre (1868 & 1905cc)  
 2.0 litre (1997cc) inc. turbo

*Does not cover 2.0i 16-valve VTS Coupe, Picasso*

ISBN: 978-1-85960-751-0

Book No: **3751**

**Xsara Picasso 2000-2002 (UK)**

MPV models. For coverage of Xsara Hatchback, Wagon & Coupe, see Manual No. 3751

Petrol: 1.6 litre (1587cc)  
 1.8 litre (1749cc).

Diesel: 2.0 litre (1997cc)

ISBN: 978-1-85960-944-6

Book No: **3944**

**Xsara Picasso 2004-2008 (UK)**

Xsara Picasso MPV models.

Petrol: 1.6 litre (1587cc)  
 1.8 litre (1749cc)  
 2.0 litre (1997cc).

Diesel: 1.6 litre (1560cc)  
 2.0 litre (1997cc)

*Does not cover C4 Picasso range*

ISBN: 978-1-84425-784-3

Book No: **4784**

**XM 1989-2000 (UK)**

Hatchback & Wagon  
 Petrol: 2.0 litre (1998cc)  
 Diesel: 2.1 litre (2088 & 2138cc)  
 2.5 litre (2445cc) inc. turbo

*Does not cover 16-valve DOHC, carburettor, singlepoint fuel injection or V6 petrol engines*

ISBN: 978-1-85960-936-1

Book No: **3451**

**ZX Petrol 1991-1998 (UK)**

Hatchback & Wagon  
 Petrol: 1.1 litre (1124cc)  
 1.4 litre (1360cc)  
 1.6 litre (1580cc)  
 1.8 litre (1761cc)  
 1.9 litre (1905cc)  
 2.0 litre (1998cc)

*Does not cover 1998cc XU10J4RS 16-valve engine introduced in 1997*

ISBN: 978-1-85960-750-3

Book No: **1881**

**ZX Diesel 1991-1998 (UK)**

Hatchback & Wagon, inc. Volcane  
 Diesel: 1.8 litre (1769cc)  
 1.9 litre (1905cc)

ISBN: 978-1-85960-701-5

Book No: **1922**

**DAIHATSU**

**Charade G10, G11, G100, G102 1980-1993 (Gregory's)**

1.0 Litre (3 cyl), 1.0 litre Turbo (3 cyl),  
 1.3 litre (4 cyl) (Petrol)

Hatchback, sedan

ISBN: 0-85566-685-4

Book No: **04254**

**FIAT**

**124 Sports 1968-1978 (UK)**

(US models) Coupe & Spider  
 1438,1608,1592,1756cc engines  
 ISBN: 978-0-90055-094-2

Book No: **34010**

**126 1973-1987 (UK)**

Sedan  
 Petrol: 594 & 652cc (air-cooled)  
 ISBN: 978-1-85010-164-2

Book No: **305**



**FIAT (CONTINUED)**

**500 1957-1973 (UK)**

Sedan & Wagon.  
Petrol: 0.5 litre (479cc & 499cc) & 0.6 litre (594cc)  
ISBN: 978-0-90055-090-4

Book No: **090**

**Fiat 500 & Panda 2004-2012 UK**

500 & Panda Hatchbacks. Also covers most mechanical features of Convertible.  
Petrol: 1.1 litre (1108cc) & 1.2 litre (1242cc).  
Turbo-diesel: 1.3 litre (1248cc) 'MultiJet'  
Does not cover models with 0.9 litre 2-cyl 'TwinAir' or 1.4 litre petrol engines, semi-automatic transmission, Abarth or 4x4.  
ISBN: 978-0-85733-558-6

Book No: **5558**

**X1/9 all models 1974-1989 (UK)**

Coupe, including Bertone  
Petrol: 1.3 litre (1290cc) & 1.5 litre (1498cc)  
ISBN: 978-1-85010-634-0

Book No: **273**

**Cinquecento 1993-1998 (UK)**

Hatchback  
Petrol: 0.9 litre (899cc) & 1.1 litre (1108cc)  
ISBN: 978-1-85960-501-1

Book No: **3501**

**Punto 1994-1999 (UK)**

Hatchback, inc. Speedgear models  
Petrol: 1.2 litre (1242cc).  
Does not cover 1.8 litre (1747cc)  
ISBN: 978-1-85960-561-5

Book No: **3251**

**Punto 1999-2003 (UK)**

Hatchback, inc. Speedgear models  
Petrol: 1.2 litre (1242cc).  
Does not cover 1.8 litre (1747cc)  
ISBN: 978-1-84425-066-0

Book No: **4066**

**Punto 2003-2007 (UK)**

Hatchback, inc. CVT/automatic models  
Petrol: 1.2 litre (1242cc)  
Does not cover 1.4 litre (1368cc) or 1.8 litre (1747cc) petrol engines, diesel models or Grande Punto  
ISBN: 978-1-84425-746-1

Book No: **4746**

**Uno 1983-1995 (UK)**

Hatchback, with manual transmission, inc. Turbo  
Petrol: 1.0 litre (903 & 999cc),  
1.1 litre (1108 & 1116cc)  
1.3 litre (1299 & 1301cc)  
1.4 litre (1372cc)

Does not cover Selecta (automatic) transmission or Fiorino type vans  
ISBN: 978-1-85960-089-4

Book No: **923**

**FORD**

**Capri II & III 4cyl 1974-1987 (UK)**

Petrol: 1.6 litre (1593cc) & 2.0 litre (1993cc)  
ISBN: 978-1-85010-313-4

Book No: **283**

**Capri II & III 2.8 & 3.0 V6 1974-1987 (UK)**

Ford Capri II (& III) 2.8 & 3.0 V6 (74-87) 2.8 injection, Injection Special & 280 (81- 87), 3.0 GT, S & Ghia (74-81)  
Petrol: 2.8 litre (2792cc), 3.0 litre (2994cc)  
Does not cover 2.8 Turbo conversions  
ISBN: 978-1-85010-309-7

Book No: **1309**

**Corsair UA 1989-1992 (Gregory's)**

2.0 litre, 2.4 litre (4 cyl) (Petrol)  
Sedan, hatchback  
ISBN: 0-85566-715-X

Book No: **06600**

**Cortina TE 1977-1980 (Gregory's)**

3.3 litre, 4.1 litre (6 cyl) (Petrol)  
Sedan, wagon  
ISBN: 0-85566-448-7

Book No: **04180**

**Escort Mk I 1100 & 1300 1968-1974 (UK)**

Sedan, Wagon & Van. Does not cover Escort Twin Cam, RS1600, Mexico or RS2000.  
Petrol: 1.1 litre (1097cc) & 1.3 litre (1297cc)  
ISBN: 978-0-85696-171-7

Book No: **171**

**Escort Mk I Mexico 1970-1974 (UK)**

RS 1600 & RS 2000  
Petrol: 1.6 litre (1598cc) OHV, 1.6 litre (1601cc) DOHC & 2.0 litre (1993cc) OHC.  
Sedan - Does not cover engines with light alloy block or Ford Escort Twin Cam with Lotus engine  
ISBN: 978-0-85696-926-3

Book No: **139**

**Escort MK II 1975-1980 (UK)**

Sedan, Wagon & Van  
Petrol: 1.1 litre (1097cc), 1.3 litre (1297cc) & 1.6 litre (1598cc)  
Does not cover RS Mexico or RS 1800/2000  
ISBN: 978-0-85696-553-1

Book No: **280**

**Escort Mk2 1975-1980 (UK)**

Mexico, RS1800, RS2000  
Petrol: 1.6 litre (1593cc), 1.8 litre (1834) & 2.0 litre (1993cc) SOHC & DOHC  
ISBN: 978-0-85696-735-1

Book No: **735**

**Escort BC 1977-1981 (Gregory's)**

1.6 litre, 2.0 litre (4 cyl) (Petrol)  
Sedan, van  
ISBN: 0-85566-450-9

Book No: **04125**

**Escape 2001-2012 (US)**

Petrol: 2.0 litre 4cyl DOHC 16v Zetec, 3.0 litre V6 DOHC 24v duratec.  
Does not cover hybrid models  
ISBN: 978-1-62092-075-6

Book No: **36022**

**Explorer 1991-2001 (US)**

Ford Explorer, Mazda Navajo 1991-2001  
Mercury Mountaineer 1997-2001  
Explorer Sport 2000-2003  
Explorer Sport Trac 2001-2005  
ISBN: 978-1-56392-591-7

Book No: **36024**

**Explorer 2002-2010 (US)**

Explorer & Mercury Mountaineer  
See Ford Explorer manual #36024 for Explorer Sport and Sport Trac models  
ISBN: 978-1-56392-811-6

Book No: **36025**

**Falcon XK/XL/XM/XP/XR/XT/XW 1960-1970 (Gregory's)**

144 ci, 170 ci, 188 ci, 200 ci, 221 ci (6 cyl) (Petrol)  
Sedan, wagon, utility  
ISBN: 0-85566-030-9

Book No: **04062**

**Falcon/Fairlane XR/XT/XW/XY/ZD 1966-1972 (Gregory's)**

289 ci, 203 ci, 351 ci (8 cyl) (Petrol)  
Sedan, wagon, van, utility  
ISBN: 0-85566-178-X

Book No: **04154**





**Falcon/Fairlane XY/XA/XB/ZD/ZF/ZG**

**1970-1976** (Gregory's)

200 ci, 250 ci (6 cyl) (Petrol)  
Sedan, wagon, van, utility, hardtop  
ISBN: 0-85566-185-2

Book No: **04155**

**Falcon/Fairlane XA/XB/ZF/ZG**

**1972-1976** (Gregory's)

302 CI, 351 CI (8 cyl) (Petrol)  
Sedan, wagon, van, utility, hardtop  
ISBN: 0-85566-187-9

Book No: **04156**

**Falcon XC 1976-1979** (Gregory's)

4.9 litre, 5.8 litre (8 cyl) (Petrol)  
Sedan, wagon, van, utility, hardtop  
ISBN: 0-85566-457-6

Book No: **04179**

**Falcon XD/XE/XF 6cyl 1979-1987**

Fairlane ZJ/ZK/ZL  
3.3 litre, 4.1 litre  
ISBN: 978-1-56392-261-9

Book No: **36730**

**Falcon EA/EB/ED 6cyl 1988-1993**

Fairlane NA/NC/NC2, LTD DA/DC/DC2  
3.2 litre, 3.9 litre, 4.0 litre  
ISBN: 978-1-56392-262-6

Book No: **36731**

**Falcon EF/EL 6cyl 1994-1998**

Fairlane NF/NL, LTD DF/DL  
4.0 litre  
ISBN: 978-1-56392-366-1

Book No: **36732**

**Falcon AU 6cyl 1998-2002**

Fairlane & LTD  
4.0 litre  
ISBN: 978-1-56392-549-8

Book No: **36733**

**Falcon/Fairmont BA/BF/FG 2002-2014**

4.0 litre six cylinder engine incl turbo  
*Does not cover LPG models or wiring diagrams for Falcon FG Series II models*  
ISBN: 978-1-62092-023-7

Book No: **36734**

**Festiva WA/WB 1991-1996**

Petrol: 1.1, 1.3, 1.5 litre 4cyl SOHC 8 valve.  
Includes carburettor and multi point fuel injected models (MPFI)  
ISBN: 978-1-56392-306-7

Book No: **36736**

**Fiesta 1995-2002** (UK)

Hatchback, Van, Courier & Combi models  
Petrol: 1.25 litre (1242cc)  
1.3 litre (1298cc)  
1.4 litre (1388cc)  
1.6 litre (1596cc)  
Diesel: 1.8 litre (1753cc) inc. turbo  
*Does not cover Classic models*  
ISBN: 978-1-84425-258-9

Book No: **3397**

**Fiesta 2002-2008** (UK)

Hatchback and Van (also most features of Fusion range)  
Petrol: 1.25 litre (1242cc)  
1.3 litre (1297cc)  
1.4 litre (1388cc)  
1.6 litre (1596cc) Duratec  
Diesel: 1.4 litre (1398cc)  
1.6 litre (1560cc) TDCi Duratorq  
*Does not cover Fiesta ST*  
ISBN: 978-1-84425-781-2

Book No: **4170**

**Fiesta 2008-2011** (UK)

Hatchback and Van  
Petrol: 1.25 litre (SNJA/SNJB/STJA/STJB Duratec)  
1.4 litre (SPJA Duratec)  
1.6 litre (HXJA, HXJB Duratec)  
Diesel: 1.4 litre (F6JD Duratorq)  
1.6 litre (HHJD, HHJE Duratorq)  
ISBN: 978-1-84425-907-6

Book No: **4907**

**Focus 1998-2001** (UK)

Hatchback, Sedan & Wagon  
Petrol: 1.4 litre (1388cc)  
1.6 litre (1596cc)  
1.8 litre (1796cc)  
2.0 (1989cc).  
Diesel: 1.8 litre (1753cc) Endura-Di.  
*Does not cover ST or RS models*  
ISBN: 978-1-85960-759-6

Book No: **3759**

**Focus 2001-2005** (UK)

Hatchback, Sedan & Wagon  
Petrol: 1.4 litre (1388cc)  
1.6 litre (1596cc)  
1.8 litre (1796cc)  
2.0 litre (1989cc).  
Diesel: 1.8 litre (1753cc) TDDi & TDCi  
*Does not cover 1.8 litre dual-fuel engines, RS, ST170 or C-Max*  
ISBN: 978-1-84425-741-6

Book No: **4167**

**Focus Petrol 2005-2011** (UK)

Hatchback, Sedan and Wagon  
Petrol: 1.4 litre (1388 cc)  
1.6 litre (1596 cc)  
1.8 litre (1798 cc)  
2.0 litre (1999 cc)  
*Does not cover C-Max or CC (Convertible) models, 2.5 litre 5-cylinder engine, Flexfuel models, CVT or Powershift transmission*  
ISBN: 978-1-85733-870-9

Book No: **4785**

**Focus Diesel 2005-2011** (UK)

Hatchback, Sedan and Wagon  
Diesel: 1.6 litre (1560 cc), 1.8 litre (1753 cc) & 2.0 litre (1997 cc)  
*Does not cover C-Max or CC (Convertible) models, CVT, Powershift or automatic transmission*  
ISBN: 978-0-85733-700-9

Book No: **4807**

**Focus LW 2011-2014** (UK)

Hatchback and Wagon  
Petrol: 1.0 litre (999 cc)  
1.6 litre (1596 cc)  
Diesel: 1.6 litre (1560 cc)  
*Does not cover 2.0 litre petrol, 2.0 litre diesel or CC, C-Max or ST models*  
ISBN: 978-0-85733-632-3

Book No: **5632**

**F-Series & Bronco 1973-1979** (US)

All full-size pick-ups F-100 to F-350 & Bronco 240 & 300 CI 6cyl.  
302, 351W, 351M, 360, 390, 400, 460 CI V8  
ISBN: 978-0-85696-788-7

Book No: **36054**

**F100 to F350 & Bronco 1980-1996** (US)

All full-size pick-ups F-100 thru F-350 & Bronco. 2WD & 4WD  
300 CI 6cyl & 232 CI V6  
255,302,351,400,460 CI V8.  
*For diesel engine, see Diesel Repair Manual 10330*  
ISBN: 978-1-56392-213-8

Book No: **36058**

**F-Series 1997-1998 Expedition 1997-1998** (US)

2WD & 4WD petrol models.  
F-150 97-03, F-250 97-99, Expedition 97-09, Lincoln Navigator 98-09  
*Does not include diesel engine, F-250 HD, Super Duty, F-350 or information specific to Lightning models.*  
*For diesel engine, see Diesel Repair Manual 10330*  
ISBN: 978-1-56392-637-2

Book No: **36059**



**FORD (CONTINUED)**

**Super Duty F-Series & Excursion  
1999-2010 (US)**

F250 & F350 2WD & 4WD  
Petrol: 5.4 litre V8 (329ci) 6.8 litre V10 (415ci)  
Diesel: 7.3 litre (444ci) V8 OHV 16 valve Di  
Turbo 1999-2003  
6.0 litre (365ci) 2003-2007  
6.4 litre (390ci) 2008 & later  
*Does not include F450 & F550 or 4.2 litre Diesel*  
ISBN: 978-1-56392-856-7

Book No: 36060

**F-Series 2004-2012 (US)**

F-150 2WD and 4WD pick-ups with gasoline  
engines for 2004 thru 2012 (does not include  
F-250, super Duty or diesel models.  
*Does not cover F-150 Heritage, Lightning or  
Raptor models*  
ISBN: 978-1-56392-991-5

Book No: 36061

**Ka 1996-2002 (UK)**

Hatchback  
Petrol: 1.3 litre (1299cc)  
ISBN: 978-1-85960-928-6

Book No: 3570

**Ka 2003-2008 (UK)**

Hatchback & Van  
Petrol: 1.3 litre (1297cc) Duratec petrol  
*Does not cover SportKa or StreetKa models*  
ISBN: 978-1-84425-786-7

Book No: 4786

**Laser KA/KB/KC/KE 1981-1989**

1.1 litre (E1)  
1.3 litre (E3, B3)  
1.5 litre (1500S twin carb)  
1.5 litre (E5, B5)  
1.6 litre (B6)  
*Does not cover diesel Turbo or 4WD*  
ISBN: 978-1-56392-264-0

Book No: 36750

**Laser KF/KH/KJ 1990-96**

1.3 litre SOHC 16v (B3)  
1.3 litre DOHC 16v (Z5)  
1.6 litre SOHC & DOHC 16v (B6)  
1.8 litre SOHC & DOHC 16v (BP)  
*Does not cover turbo, V6 engine or 4WD*  
ISBN: 978-1-56392-265-7

Book No: 36751

**Maverick 1988-1994**

Petrol: 3.0 litre 6 cyl SOHC Carb & EFI (RB30S)  
4.2 litre 6 cyl OHV Carb & EFI (TB42)  
Diesel: 4.2 litre 6cyl OHV (TD42)  
ISBN: 978-1-56392-383-8

Book No: 72760

**Mondeo 1993-2000 (UK)**

Sedan, Hatchback & Wagon  
4 cyl: 1.6 litre (1597cc), 1.8 litre (1796cc) &  
2.0 litre (1988cc)  
V6: 2.5 litre (2544cc) V6.  
*Does not cover four-wheel-drive or ST200*  
ISBN: 978-1-84425-069-1

Book No: 1923

**Mondeo 2000- 2003 (UK)**

Hatchback, Sedan & Wagon  
Petrol:  
4 cyl: 1.8 litre (1798cc) & 2.0 litre (1999cc)  
V6: 2.5 litre 2495 /2499/ 2544cc) V6.  
Diesel: 2.0 litre (1998cc)  
*Does not cover 3.0 litre V6 petrol engine*  
ISBN: 978-1-85960-990-3

Book No: 3990

**Mondeo 2003-2007 (UK)**

Hatchback, Sedan & Wagon  
Petrol:  
4 cyl: 1.8 litre (1798cc) & 2.0 litre (1999cc)  
V6: 2.5 litre (2499cc also listed as 2495cc  
or 2544cc) & 3.0 litre (2967cc) V6, inc.  
ST220.  
Diesel: 2.0 litre (1998cc) & 2.2 litre (2198cc)  
TDCi.  
*Does not cover 1.8 litre. SCI direct injection engine*  
ISBN: 978-1-84425-619-8

Book No: 4619

**Mondeo 2007-2012**

Hatchback, Sedan & Wagon  
Petrol: 2.0 litre (1998cc).  
Diesel: 1.8 litre (1753cc) and 2.0 litre  
(1998cc).  
*Does not cover 2.2 litre diesel engine  
Does not cover 1.6, 2.3 or 2.5 litre petrol engines,  
or 2.0 litre FFV (flexfuel) or 'Ecoboost'*  
ISBN: 9 780857 33548-7

Book No: 5548

**Mustang V8 1964½ -1973 (US)**

All Mustang, Mach I, GT, Shelby & Boss V8  
models  
260,289,305,351,390 CI engines  
ISBN: 978-0-85696-357-5

Book No: 36048

**Mustang II 4 & 6cyl & V8  
1974-1978 (US)**

All Mustang II models  
4-cylinder, V6 & V8 engines  
ISBN: 978-0-85696-629-3

Book No: 36049

**Mustang 1979-1993 (US)**

Ford Mustang (79-83), Ghia & Cobra,  
Mercury Capri (79-86), Ghia & RS  
In-line 4-cyl & 6-cyl, V6 & V8 engines  
including Turbo  
ISBN: 9 781563 92130-8

Book No: 36050

**Mustang 1994-2004 (US)**

*Does not cover independent rear suspension/  
driveaxles on 1999 and later Cobra models or  
information on the 2003 and 2004 Cobra models*  
ISBN: 978-1-56392-676-1

Book No: 36051

**Mustang 2005-2007 (US)**

V6: 4.0 litre (244ci)  
V8: 4.6 litre (281cc)  
*Does not cover Shelby GT500 Cobra models*  
ISBN: 978-1-56392-661-7

Book No: 36052

**Probe 1989-1992 (US)**

4 cyl: 2.2 litre including turbo  
V6: 3.0 litre  
ISBN: 978-1-56392-089-9

Book No: 36066

**Probe 1993-2001 (US)**

4 cyl: 2.0 litre DOHC 16 valve (FS)  
V6: 2.5 litre DOHC 24 valve (KL)  
*Does not cover 4 wheel steering*  
ISBN: 978-1-56392-440-8

Book No: 61042

**Telstar AR/AS/AT 1983-1990**

2.0 litre SOHC 8v & 12v (FE)  
2.2 litre SOHC 12v (F2) incl turbo  
Includes EFI models.  
*Does not cover diesel engines*  
ISBN: 978-1-56392-277-0

Book No: 36780

**Territory SX/SY 2004-2011**

2WD & AWD  
4.0 litre six cylinder engine incl turbo  
*Does not cover Territory SZ models*  
ISBN: 978-1-62092-023-7

Book No: 36734

**Transit Mk2 1978-1986 (UK)**

Petrol: 1.6 litre (1593cc and 1599cc) and 2.0  
litre (1993cc).  
*Does not cover diesel or V6 petrol models, non-  
standard bodywork and fittings*  
ISBN: 978-1-85010-176-5

Book No: 719



**Transit Mk3 1986-1989 (UK)**

Petrol: 1.6 litre (1593cc) and 2.0 litre (1993cc)  
 Does not cover Diesel or V6 petrol models,  
 4-speed (A4LD) automatic transmission, Transit  
 4x4 or specialist bodywork and conversions  
 ISBN: 978-1-85010-468-1

Book No: **1468**

**Transit 1986-1999 (UK)**

Van, Chassis Cab, Bus etc, inc. Tourneo,  
 Diesel: 2.5 litre (2496cc) normally-aspirated  
 and turbocharged engines  
 Does not cover petrol models, Transit 4x4 or  
 specialist bodywork/conversions  
 ISBN: 978-1-85960-586-8

Book No: **3019**

**Transit 2000-2006 (UK)**

Van, Chassis Cab, Bus etc, inc. Tourneo,  
 Diesel: 2.0 litre (1998cc), 2.4 litre (2402cc)  
 Does not cover petrol models, auto-shift manual  
 transmission or specialist bodywork/conversions  
 ISBN: 978-1-84425-775-1

Book No: **4775**

**Transit 2006-2013 (UK)**

Diesel: 2.2 litre (2198cc)  
 2.4 litre (2402cc)  
 Does not cover 2.3 litre petrol or 3.2 litre 5-cyl  
 diesel or AWD  
 ISBN: 9 780857 33629-3

Book No: **5629**

**HOLDEN**

**Apollo JK/JL 1989-1993**

4 cyl: 2.0 litre SOHC 8v (2S-E)  
 2.0 litre DOHC 16v (3S-F)  
 2.0 litre DOHC 16v (3S-FE)  
 V6: 2.5 litre DOHC 24v (2VZ-FE)  
 Does not cover 3.0L V6  
 ISBN: 978-1-56392-252-7

Book No: **92705**

**Apollo JM/JP 1993-1996**

4 cyl: 2.2 litre DOHC 16v (5S-FE)  
 V6: 3.0 litre DOHC 24v (3VZ-FE)  
 3.0 litre DOHC 24v (1MZ-FE)  
 ISBN: 978-1-56392-257-2

Book No: **92706**

**Astra LB/LC 1982-1987**

Sedan, hatch, coupe, wagon  
 1.3 litre 4cyl SOHC carb (E13)  
 1.5 litre 4cyl SOHC carb (E15)  
 1.6 litre 4cyl SOHC carb (E16)  
 ISBN: 978-1-56392-270-1

Book No: **72770**

**Astra LD 1987-1991**

Sedan, Hatch, Wagon  
 1.6 litre 4cyl SOHC (16LE)  
 1.8 litre 4cyl SOHC (18LE)  
 ISBN: 978-1-56392-271-8

Book No: **72771**

**Astra 1991-1998 (UK)**

Sedan, Hatch  
 1.4 litre SOHC (C14NV, C14SE, C14NZ,  
 X14NZ)  
 1.4 litre DOHC (Z14XE)  
 1.6 litre SOHC (C16NZ, C16SE, X16SZ,  
 X16SZR)  
 1.6 litre DOHC (X16XEL)  
 1.8 litre SOHC (C18NZ)  
 1.8 litre DOHC (C18XE, C18XEL, X18XE)  
 2.0 litre SOHC (C20NE)  
 2.0 litre DOHC (C20XE, X20XEV)  
 Does not cover 1.8 litre (C18SEL)  
 ISBN: 978-1-85960-710-7

Book No: **3156**

**Astra TS 1998-2005**

Sedan, Hatch  
 1.4 litre DOHC (X14XE, Z14XE)  
 1.6 litre SOHC (X16SZR, X16SE)  
 1.6 litre DOHC (X16XEL, X16X3)  
 1.8 litre DOHC (X18XE1, Z18XE, X18XEL)  
 2.0 litre DOHC (X20XEV)  
 2.2 litre DOHC (X22SE)  
 Does not cover 2.0 litre turbo Coupe or Carbio  
 ISBN: 978-1-56392-771-3

Book No: **41710**

**Astra Petrol 2004-2008 (UK)**

Sedan, Hatch, Wagon  
 1.4 litre (1364cc) DOHC (Z14XEP, Z14XEL)  
 1.6 litre (1598cc) DOHC (Z16XEP)  
 1.8 litre (1796cc) DOHC (Z18XE, 18XER)  
 Does not cover 1.6 litre turbo, 2.0 litre turbo, 1.6  
 litre VVT, dual fuel models or Twin Top models  
 ISBN: 978-1-84425-732-4

Book No: **4732**

**Astra Diesel 2004-2008 (UK)**

Sedan, Hatch, Wagon  
 1.3 litre (1248cc)  
 1.7 litre (1686cc)  
 Does not cover Twin Top models or Easytronic  
 transmission  
 ISBN: 978-1-84425-733-1

Book No: **4733**

**Astra 2006-2010 (UK)**

Hatch, Van  
 Petrol: 1.0 litre (Z10XEP)  
 1.2 litre (Z12XEP)  
 1.4 litre (Z14XEP)  
 Diesel: 1.3 litre (Z13DTH/Z13DTi/Z13DTJ/  
 Z13DTR)  
 Does not cover 1.6 litre petrol, 1.7 litre diesel or van  
 ISBN: 978-1-84425-886-4

Book No: **4886**

**Barina MB/ML/MF/MH 1985-1993**

1.3L 4cyl SOHC carburettor  
 Does not cover EFI engine  
 ISBN: 978-1-56392-278-7

Book No: **41725**

**Barina SB 1994-1997**

Covers GSi 16v  
 1.2 litre SOHC 8v (12NZ)  
 1.2 litre SOHC 8v (C12NZ)  
 1.4 litre SOHC 8v (C14NZ)  
 1.4 litre SOHC 8v (C14SE)  
 1.6 litre DOHC 16v (C16XE)  
 Does not cover diesel engines  
 ISBN: 978-1-56392-307-4

Book No: **41726**

**Barina 1997-2000 (UK)**

Hatchback, Combo Van  
 1.0 litre DOHC 12v 3 cyl (X10XE)  
 1.2 litre DOHC 16v 4 cyl (X12XE)  
 1.2 litre SOHC 8v 4 cyl (X12SZ)  
 1.4 litre SOHC 8v 4 cyl (C14NZ, C14SE)  
 1.4 litre DOHC 16v 4 cyl (X14XE)  
 1.6 litre DOHC 16v 4 cyl (X16XE)  
 Does not cover diesel engines  
 ISBN: 978-1-85960-921-7

Book No: **3921**

**Barina 2000-2006 (UK)**

Hatchback, Combo Van  
 Petrol: 1.0 litre (Z10XE, Z10XEP)  
 1.2 litre (Z12XE, Z12XEP)  
 1.4 litre (Z14XE, Z14XEP)  
 Diesel: 1.3 litre (Z13DT)  
 1.7 litre DOHC 16v 4 cyl (Y17DTi, Y17DTL)  
 Does not cover 1.6 litre and 1.8 litre petrol engines  
 ISBN: 9 780857 33577-7

Book No: **5577**

**Camira JB/JD/JE 1982-1989**

1.6 litre carb (16JH)  
 1.8 litre TBI (18JC)  
 1.8 litre MPI (18JU)  
 2.0 litre MPI (20JD)  
 ISBN: 978-1-56392-308-1

Book No: **41730**





**HOLDEN (CONTINUED)**

**Combo 1994-1999**

- 1.2 litre SOHC 8v (12NZ)
- 1.2 litre SOHC 8v (C12NZ)
- 1.4 litre SOHC 8v (C14NZ)
- 1.4 litre SOHC 8v (C14SE)
- 1.6 litre DOHC 16v (C16XE)

*Does not cover diesel engines*  
 ISBN: 978-1-56392-307-4

Book No: **41726**

**Commercials WB 1980-1985 (Gregory's)**

- 3.3 litre (6 cyl) (Petrol)
- Van, utility, 1 tonner

ISBN: 0-85566-545-9

Book No: **04201**

**Commodore VB/VC/VH/VK 1978-1985**

- Sedan & Wagon
- 2.85 litre 6 cyl OHV Carburettor
- 3.3 litre 6 cyl OHV Carburettor
- 3.3 litre 6 cyl OHV EFI

ISBN: 978-1-56392-258-9

Book No: **41740**

**Commodore VH/VK 1981-1985 (Gregory's)**

- 4.2 litre, 5.0 litre (8 cyl) (Petrol)
- Sedan, wagon

ISBN: 0-85566-620-X

Book No: **04209**

**Commodore VL 1986-1988**

- Sedan & Wagon
- 3.0 litre 6cyl SOHC 12v (RB30) incl turbo
- 2.0 litre 6 cyl SOHC 12V

ISBN: 978-1-56392-266-4

Book No: **41741**

**Commodore VN/VP/VR/VS 1988-1996**

- Sedan & Wagon
- V6: 3.8 litre V6 OHV
- V8: 5.0 litre V8 OHV

*Does not cover LPG engines, V6 supercharged engines or HSV or stroker engines*  
 ISBN: 978-1-56392-633-4

Book No: **41742**

**Commodore VT/VX/VY/VZ 1997-2006**

- Sedan 1997 - 2006
- Wagon & Utility 1997-2007
- V6: 3.6 litre incl supercharged models
- 3.8 litre incl supercharged models
- V8: 5.0 litre
- 5.7 litre Gen III
- 6.0 litre Gen IV

*Does not cover LPG models or 1 Tonne Ute*  
 ISBN: 978-1-56392-743-0

Book No: **41743**

**Commodore VE 2006-2012**  
*VF update due mid 2017*

- V6: 3.0 litre SIDI (LF1, LFW)
- 3.6 litre Alloytech (LE0, LY7)
- 3.6 litre SIDI (LLT, LFX)
- V8: 6.0 litre Gen IV (L98, LS2, L76, L77)
- 6.2 litre Gen IV (LS3)

*Does not cover LPG models.*  
 ISBN: 978-1-56392-942-7

Book No: **41744**

**Gemini TC/TD 1977-1979 (Gregory's)**

- 1.6 litre (4 cyl) (Petrol)
- Wagon, coupe, van

ISBN: 0-85566-449-5

Book No: **04118**

**Gemini TE 1979-1982 (Gregory's)**

- 1.6 litre (4 cyl) (Petrol)
- Sedan, wagon, van

ISBN: 0-85566-512-2

Book No: **04190**

**Gemini TF/TG 1982-1985 (Gregory's)**

- 1.6 litre (4 cyl) (Petrol)
- Sedan, wagon, van

ISBN: 0-85566-573-4

Book No: **04214**

**Holden FX/FJ/FE/FC/FB/EK/EJ/EH/HD/HR 1948-1968 (Gregory's)**

- 132 ci, 138 ci, 149 ci, 161 ci, 179 ci, 186 ci (6 cyl)
- Sedan, wagon, van

ISBN: 0-85566-388-X

Book No: **04067**

**Holden HK/HT/HG 1968-1971 (Gregory's)**

- 161 ci, 186 ci (6 cyl) (Petrol)
- Sedan, wagon, van, utility, hardtop

ISBN: 0-85566-037-6

Book No: **04086**

**Holden HK/HT/HG 1968-1971 (Gregory's)**

- 253 ci, 307 ci, 308 ci, 327 ci, 350 ci (8 cyl) (Petrol)
- Sedan, wagon, van, utility, hardtop

ISBN: 0-85566-035-X

Book No: **04085**

**Holden HQ/HJ 1971-1976 (Gregory's)**

- 173 ci, 202 ci (6 cyl) (Petrol)
- Sedan, wagon, van, utility, hardtop, 1 tonner

ISBN: 0-85566-168-2

Book No: **04146**

**Holden HQ/HJ 1971-1976 (Gregory's)**

- 253 ci, 308 ci, 350 ci (8 cyl) (Petrol)
- Sedan, wagon, van, utility, hardtop, 1 tonner

ISBN: 0-85566-176-3

Book No: **04147**

**Holden HX/HZ 1976-1980 (Gregory's)**

- 3.3 litre (6 cyl) (Petrol)
- Sedan, wagon, van, utility, 1 tonner

ISBN: 0-85566-390-1

Book No: **04177**

**Holden HX/HZ 1976-1980 (Gregory's)**

- 4.2 litre, 5.0 litre (8 cyl) (Petrol)
- Sedan, wagon, van, utility, hardtop, 1 tonner

ISBN: 0-85566-389-8

Book No: **04178**

**Jackaroo 1981-1993 (US)**

- Isuzu Trooper Petrol, 2WD & 4WD
- 4 cyl: 1.8 litre SOHC (G180Z)
- 2.0 litre SOHC (G200Z)
- 2.3 litre SOHC (4ZD1)
- 2.6 litre SOHC (4ZE1)

- V6: 2.8 litre OHV
- 3.1 litre OHV

*Does not cover diesel engines*  
 ISBN: 978-1-56392-033-2

Book No: **47020**

**Jackaroo 1991-1997**

- 4 cyl: 2.2 litre DOHC MPI (X22SE)
- 2.3 litre SOHC carb (4ZD1)
- 2.6 litre SOHC carb & MPI (4ZE1)
- V6: 3.1 litre SOHC TBI
- 3.2 litre SOHC & DOHC MPI (6VD1)

*Does not cover 2.2 litre C22NE engine as fitted in Australia or diesel engines*  
 ISBN: 978-1-56392-645-7

Book No: **41753**

**Nova LE/LF 1985-1992**

- Sedan, Hatchback
- 1.3 litre SOHC 8v (2A-C)
- 1.6 litre SOHC 8v (4A-C)
- 1.4 litre DOHC 16v (6A-F)
- 1.6 litre DOHC 16v (4A-F)
- 1.6 litre DOHC 16v (4A-FE)
- 1.6 litre DOHC 16v (4A-GE)

ISBN: 978-1-56392-260-2

Book No: **92726**

**Nova LG 1993-1996**

- Sedan, Hatchback
- 1.6 litre DOHC 16v (4A-FE)
- 1.8 litre DOHC 16v (7A-FE)

ISBN: 978-1-56392-668-6

Book No: **92727**



**Rodeo KB/TF 1985-1996 (Gregory's)**

2WD & 4WD  
2.6 litre petrol (4 cyl) (Petrol)  
Pickup, space cab, crew cab, cab chassis  
ISBN: 0-85566-792-3

Book No: **06602**

**Rodeo 1991-2002**

4 cyl: 2.2 litre DOHC MPI (X22SE)  
2.3 litre SOHC carb (4ZD1)  
2.6 litre SOHC carb & MPI (4ZE1)  
*Does not cover 2.2 litre C22NE engine as fitted in Australia or diesel engines*  
ISBN: 978-1-56392-645-7

Book No: **41753**

**Torana HB 1967-1969 (Gregory's)**

Sedan  
70 ci (4 cyl) including 70.7 HP Brabham  
ISBN: 0-85566-169-0

Book No: **04072**

**Torana LC/LJ 1971-1975 (Gregory's)**

1599cc, 1760cc (4 cyl)  
Sedan, hatchback  
ISBN: 0-85566-169-0

Book No: **04145**

**Torana LC/LJ 1969-1974 (Gregory's)**

130 ci, 138 ci, 161 ci, 173 ci, 202 ci (6 cyl) (Petrol)  
Sedan  
ISBN: 0-85566-050-3

Book No: **04084**

**Torana LH/LX 1974-1978 (Gregory's)**

2850cc, 3300cc (6 cyl) (Petrol)  
Sedan, hatchback  
ISBN: 0-85566-210-7

Book No: **04058**

**Vectra 1988-1995 (UK)**

Sedan & Hatchback  
Petrol: 1.4 litre (1389cc), 1.6 litre (1598cc), 1.8 litre (1796cc) 2.0 litre (1998cc)  
*Does not cover diesel engines, V6 petrol engines, air conditioning or 4WD models*  
ISBN: 978-1-85960-343-7

Book No: **3158**

**Vectra 1995-1999 (UK)**

Sedan & Hatchback  
Petrol: 1.6 litre (X16SZR, X16XEL)  
1.8 litre (X18XE, X18XE1)  
2.0 litre (X20XEV)  
Diesel: 1.7 litre (X17DT)  
2.0 litre (X20DT)  
*Does not cover 2.0 litre (C20SEL) or 2.5 litre V6 (X25XE)*  
ISBN: 978-1-85960-948-0

Book No: **3396**

**Vectra 1995-2002 (UK)**

Sedan & Hatchback  
Petrol: 1.6 litre SOHC (X16SZR)  
1.6 litre DOHC (X16XEL, Z16XE)  
1.8 litre DOHC (X18XE, Z18XE)  
2.0 litre (X20XEV)  
2.2 litre (Z22SE)  
Diesel: 1.7 litre SOHC (X17DT)  
2.0 litre SOHC (X20DT)  
*Does not cover 2.2 litre (C22SEL) or 2.5 litre V6 (X25XE)*  
ISBN: 978-1-85960-930-9

Book No: **3930**

**Vectra 2002-2006 (UK)**

Sedan & Hatchback  
Petrol: 1.8 litre (Z18XE, Z18XEL)  
2.2 litre (Z22SE, Z22YH)  
2.2 litre (Z22SE)  
Diesel: 1.9 litre SOHC (Z19DT)  
1.9 litre DOHC (Z19DTH)  
2.0 litre (Y20DTH)  
2.2 litre (Y22DTR)  
*Does not cover 1.6 or 2.0 litre turbo, 3.0 litre V6 diesel, CVTronic transmission, dual fuel*  
ISBN: 978-1-84425-618-1

Book No: **4618**

**Zafira TT 1998-2005 (UK)**

Wagon  
1.4 litre DOHC (X14XE, Z14XE)  
1.6 litre SOHC (X16SZR, X16SE)  
1.6 litre DOHC (X16XEL, X16X3)  
1.8 litre DOHC (X18XE1, Z18XE, Z18XEL)  
2.0 litre DOHC (X20XEV)  
2.2 litre DOHC (X22SE)  
ISBN: 978-1-56392-771-3

Book No: **41710**

**HILLMAN**

**Imp 1963-1976 (UK)**

Sedan, Coupe & Wagon, inc. Sunbeam & Singer variants, Husky & Van  
Petrol: 0.9 litre (875cc) & 1.0 litre (998cc)  
ISBN: 9 780900 55022-5

Book No: **022**

**HONDA**

**Accord 1976-1983 (US)**

Petrol: 1600cc, 1602cc, 1750cc 4 cyl SOHC  
ISBN: 978-1-85010-150-5

Book No: **42010**

**Accord 1984-1989 (US)**

1.8 litre carburettor  
2.0 litre carburettor & EFI (A20A4)  
ISBN: 978-1-85010-615-9

Book No: **42011**

**Accord 1990-1993 (US)**

2.2 litre 4 cyl SOHC 16v (F22A5)  
ISBN: 978-1-56392-067-7  
Book No: **42012**

**Accord 1994-1997 (US)**

2.2 litre 4cyl (F22B1, VTEC & F22B2)  
2.7 litre V6 (C27A4)  
ISBN: 978-1-56392-323-4  
Book No: **42013**

**Accord 1998-2002 (US)**

2.3 litre 4 cyl (F23A1, F23A4, F23A5)  
3.0 litre V6 (J30A1)  
ISBN: 978-1-56392-538-2  
Book No: **42014**

**Accord 2003-2007 (US)**

Covers 2 door coupe & 4 door sedan  
2.4 litre 4cyl DOHC 16v VTEC (K24A4)  
3.0 litre V6 SOHC 24v VTEC (J30A4)  
*Does not include information specific to Hybrid models, or Accord Euro models 2.4 litre (K24A3) VTEC & Lift*  
ISBN: 978-1-56392-989-2  
Book No: **42015**

**Civic 1200 1973-1979 (US)**

1169cc SOHC Carb (EB1)  
1238cc SOHC Carb (EB2)  
ISBN: 978-0-85696-584-5  
Book No: **42020**

**Civic 1300 & 1500 1980-1983 (US)**

Sedan, Hatch, Wagon  
1335cc 4cyl SOHC carburettor  
1488cc 4cyl SOHC carburettor  
Manual & Automatic Transmission (Hondamatic)  
ISBN: 978-1-85010-074-4  
Book No: **42021**

**Civic 1975-1979 (US)**

1488cc 4cyl SOHC Carb  
ISBN: 978-0-85696-586-9  
Book No: **42022**

**Civic 1984-1987 (UK)**

Hatch, Shuttle, CRX incl. CRX 1.6i-16  
1.3 litre (1342cc) SOHC  
1.5 litre (1488cc) SOHC  
1.6 litre (1590cc) DOHC  
*Does not cover Shuttle 4x4*  
ISBN: 978-1-85010-620-3  
Book No: **1226**



**HONDA (CONTINUED)**

**Civic & CRX 1984-1991 (US)**

- 1500cc Carb (EW1)
- 1300cc Carb (EV1)
- 1500cc Carb (D15A2) CRX models
- 1500cc Fi (EW3)
- 1500cc Fi (D15A3)
- 1500cc DPFI (D15B1)
- 1500cc DPFI (D15B2)
- 1500cc MPFI (D15B6)
- 1600cc MPFI (D16A6)

ISBN: 978-1-56392-024-0

Book No: 42023

**Civic 1992-1995 (US)**

- Sedan, Hatch, Wagon, Del Sol Roadster
- 1.5 litre SOHC 8 valve (D15B8)
- 1.5 litre SOHC 16 valve (D15B7)
- 1.5 litre SOHC 16 valve Vtec (D15Z1)
- 1.6 litre SOHC 16 valve Vtec (D16Z6)

Does not cover DOHC engines

ISBN: 978-1-56392-118-6

Book No: 42024

**Civic 1991-1996 (UK)**

- Hatchback, Sedan & Coupe with SOHC engines
- 1.3 litre (1343cc) 8 valve (D13B2)
- 1.5 litre (1493cc) 16 valve VTECE (D15Z1)
- 1.5 litre (1493cc) 16 valve (D15B2)
- 1.5 litre (1493cc) 16 valve VTEC (D15B7)
- 1.6 litre (1595cc) 16 valve VTEC (D16Z6)

Does not cover CRX, UK-built 5-door, revised range introduced from March 1995, or DOHC

ISBN: 978-1-85960-199-0

Book No: 3199

**Civic, Integra, CR-V 1994-2001 (US)**

- Civic 1996-2000
- CR-V 1997-2001
- Integra 1994-2000
- 1.6 litre SOHC 16v (D16Y7)
- 1.6 litre SOHC 16v VTEC (D16Y8)
- 1.6 litre SOHC VTEC-E (D16Y5)
- 1.6 litre DOHC 16v VTEC (B16A2)
- 2.0 litre DOHC 16v (B20B4 & B20Z2)
- 1.8 litre DOHC 16v (B18B1)
- 1.8 litre DOHC 16v VTEC (B18C1)
- 1.8 DOHC 16v VTEC (B18C5)

ISBN: 978-1-56392-582-5

Book No: 42025

**Civic 3/1995-2000 (UK)**

- Hatch, Sedan, Wagon, Coupe
- 1.4 litre (1396cc)
- 1.5 litre (1493cc)
- 1.6 litre (1590cc)
- 1.6 litre (1595cc) SOHC
- 1.8 litre (1797cc) DOHC VTEC (B16A2 & B18C4)

ISBN: 978-1-84425-050-9

Book No: 4050

**Civic & CR-V 2001-2010 (US)**

- Civic 2001-2010
- CR-V 2002-2009
- 1.7 litre SOHC 16v VTEC (D17A2)
- 1.7 litre SOHC 16v VTEC (D17A6)
- 1.7 litre SOHC 16v Non VTEC (D17A1)
- 2.0 litre DOHC 16v i-VTEC (K20A3)
- 2.4 litre DOHC 16v i-VTEC (K24A1)

Does not cover Hybrid models

ISBN: 978-1-56392-849-9

Book No: 42026

**Civic 2001-2005 (UK)**

- Hatch
- Petrol: 1396cc SOHC 16v VTEC (D14Z5/D14Z6)
- 1590cc SOHC 16v VTEC (D16V1/D16W7)
- Diesel: 1686cc DOHC 16v CTDi (4EE2)

Does not cover Type R, Type S 2.0 litre Petrol, 2 door Coupe or 1.3 litre Electric Hybrid

ISBN: 9 781844 2611-2

Book No: 4611

**Integra & Legend 1986-1990 (US)**

- Integra 1986-1989
- Legend 1986-1990
- 1.6 litre (4 cyl)
- 2.7 litre (V6)

ISBN: 978-1-85010-776-7

Book No: 12020

**Integra & Legend 1990-1995 (US)**

- Integra 1990-1993
- Legend 1991-1995
- 1.7 litre (4 cyl)
- 1.8 litre (4 cyl)
- 3.2 litre (V6)

ISBN: 978-1-56392-335-7

Book No: 12021

**Jazz 2002-2008 (UK)**

- 1.2 litre (1246cc) SOHC i-DSi (L12A)
- 1.3 litre (1339cc) SOHC i-DSi (L13A)

Does not cover L15A 1.5 litre engine

ISBN: 978-1-84425-735-5

Book No: 4735

**MDX 2001-2007 (US)**

- MDX 2001-2007, Pilot 2003-2007

ISBN: 978-1-56392-690-7

Book No: 42037

**Odyssey 1999-2010 (US)**

- 3.5 litre V6 DOHC 24v VTEC (J35A1)

ISBN: 978-1-56932-923-6

Book No: 42035

**Prelude 1979-1989 (US)**

- 1.8 litre SOHC Carb from 1979-1982
- 1.8 litre SOHC Carb & EFI 1983-1987
- 2.0 litre DOHC 16v EFI from 1986 on

Does not cover 4 Wheel Steering

ISBN: 978-1-85010-629-6

Book No: 42040

**HYUNDAI**

**Accent 2000-2009**

- Sedan, Hatch
- 1.5 (G4ECX)
- 1.6 (G4ED)
- 1.6 (G4ED5)

ISBN: 978-1-56392-804-8

Book No: 43015

**Excel 1986-2000**

- Sedan, Hatch
- 1.5 (1468cc) SOHC 8v (G4AJ)
- 1.5 (1495cc) SOHC 12v (G4AK)
- 1.5 (1495cc) DOHC 16v (G4AK - Alpha 3)

ISBN: 978-1-56392-419-4

Book No: 43725

**Elantra 1996-2013 (US)**

- Sedan, Hatch, Wagon
- 1.8 litre MFI DOHC (G4GM)
- 2.0 litre MFI (G4GF)
- 2.0 litre MFI (G4GC Beta)

Does not cover Lantra

ISBN: 978-1-62092-108-1

Book No: 43010

**Santa Fe 2001-2009 (US)**

- Petrol:
- 4 cyl: 2.4 litre
- V6: 2.7 litre
- 3.3 litre
- 3.5 litre

Does not cover diesel engines or 2.0 litre petrol

ISBN: 978-1-62092-041-1

Book No: 43050

**Sonata 1999-2008 (US)**

- 4 cyl: 2.4 litre (G4JS - Sirius II, G4KC - Theta)
- V6: 2.5 litre (G6BW)
- 2.7 litre (G6BA)
- 3.3 litre (G6DB)

ISBN: 978-1-56392-736-2

Book No: 43055





**JAGUAR**

**Jaguar E-Type 1961-1972 (UK)**

Roadster, Coupe, Coupe 2+2, Series 1, 2, 3,  
3.8 litre (3781cc), 4.2 litre (4235cc)

*Does not cover V12 models*

ISBN: 978-0-85696-140-3

Book No: **140**

**Jaguar Mk1 & 2 1955-1969 (UK)**

MK1 & MKII 1955-1969 240 & 340 Sedan

2.4 litre (2483cc), 3.4 litre (3442cc)  
3.8 litre (3781cc) DOHC 6cyl engines

ISBN: 9 780900 55098-0

Book No: **098**

**Jaguar XJ6 Ser 1, 2 & 3  
1968-1986 (UK)**

Daimler Sovereign Series 1 2 3,  
2.8 litre (2792cc), 3.4 litre (3442cc), 4.2 litre  
(4235cc).

*Does not cover XJS or 3.6 litre*

ISBN: 978-1-85010-178-9

Book No: **242**

**Jaguar XJ12 & XJS 1972-1988 (UK)**

XJS Sovereign Daimler Double Six incl.  
Vanden Plas. Series 1 2 3

Petrol: 5.3 litre (5343) V12

*Does not cover E-Type or XJS Convertible*

ISBN: 978-1-85010-437-7

Book No: **478**

**Jaguar XJ6 1986-1994 XJ40 (UK)**

XJ6 & Daimler Sovereign

3.2 litre (3239cc)

3.6 litre (3590cc)

4.0 litre (3980cc)

*Does not cover XJR models*

ISBN: 978-1-85960-261-4

Book No: **3261**

**Jaguar X Type 2001-2011 (UK)**

Petrol: 2.1 litre (2099cc)

2.5 litre (2495cc)

3.0 litre (2967cc)

Diesel: 2.0 litre (1998cc)

2.2 litre (2198cc)

ISBN: 978-0-85733-631-6

Book No: **5631**

**JEEP**

**CJ Series 1949-1986 (US)**

4 & 6cyl in line, V6 & V8 OHV engines

ISBN: 978-1-56392-221-3

Book No: **50020**

**Cherokee, Wagoneer, Pick-up  
1972-1991 (US)**

Grand Wagoneer 1984-1991

Cherokee 1972-1983

J Series Pick up 1972-1988

4.2 litre 6 cyl in-line OHV

5.0 litre (304ci), 5.9 litre (360ci), 6.6 litre

(401ci) V8 OHV

*Does not cover diesel engines, or 1984 on  
Comanche pick-up*

ISBN: 978-1-56392-242-8

Book No: **50029**

**Cherokee 1984-2001 (US)**

Petrol: 2.5 litre 4cyl OHV

2.8 litre V6 OHV

4.0 litre in-line 6 cyl OHV

*Does not cover Grand Wagoneer*

ISBN: 978-1-56392-540-5

Book No: **50010**

**Cherokee 2002-2012 (US)**

Petrol: 2.4 litre 4 cyl

3.7 litre V6

*Does not cover diesel engines*

ISBN: 978-1-62092-102-2

Book No: **50035**

**Grand Cherokee 1993-2004 (US)**

2WD & 4WD

Petrol: 4.0 litre 6 cyl

5.2 & 5.9 litre V8

*Does not cover diesel engine*

ISBN: 978-1-56392-554-2

Book No: **50025**

**Grand Cherokee 2005-2014 (US)**

2WD & 4WD

V6: 3.6 litre

3.7 litre

V8: 4.7 litre

5.7 litre

6.1 litre

6.4 litre

*Does not cover diesel engine*

ISBN: 978-1-62092-107-4

Book No: **50026**

**Wrangler 1987-2011 (US)**

Petrol: 2.4 litre DOHC 4 cyl

2.5 litre OHV 4 cyl

4.0 litre OHV 6 cyl

4.2 litre OHV 6 cyl

*Does not cover diesel engine*

ISBN: 978-1-56392-983-0

Book No: **50030**

**KIA**

**Kia Optima 2001-2010 (US)**

Petrol 4 cyl: G4JS (Sirius II)

2.4 litre DOHC 16 valve; G4KC (Theta)

2.4 litre; Petrol V6 : G6BW (Delta)

2.7 litre DOHC; G6BA (Delta)

2.7 litre DOHC; G6EA (Mu)

2.7 litre DOHC;

ISBN: 978-1-56392-924-3

Book No: **54050**

**Kia Sorento Petrol 2003-2013 (US)**

4-cyl: 2.4 litre (2359cc)

V6: 3.3 litre (3341cc)

3.5 litre (3470cc)

3.8 litre (3778cc)

*Does not cover 3.3 litre Sigma engine from 03-06*

ISBN: 978-1-92092-046-6

Book No: **54077**

**LADA**

**1200/1300/1500/1600 1974-1991 (UK)**

1.2 litre (1198cc), 1.3 litre (1294cc),

1.5 litre (1452cc), 1.6 litre (1570cc)

*Does not cover Niva or Samara hatchback.*

ISBN: 978-1-85010-756-9

Book No: **413**

**Samara 1987-1991 (UK)**

1.1 litre, 1.3 litre & 1.5 litre engines

ISBN: 978-1-85010-610-4

Book No: **1610**

**LAND ROVER**

**Series 2/2A/3 1958-1985 (UK)**

Petrol: 2 1/4 (2286cc)

Diesel: 2 1/4 (2286cc)

*Does not cover petrol engines, 2.5 litre diesel  
engine, 24v electrical systems or forward control  
models*

ISBN: 978-0-857-33-568-5

Book No: **5568**

**Defender 1983-2007 (UK)**

90 & 110 models

Diesel: 2.25 litre, 2.5 litre non turbo

2.5 litre turbo (200TDi, 300TDi, TD5)

ISBN: 978-1-84425-603-7

Book No: **3017**

**Discovery 1989-1998 (UK)**

Petrol: 3.5 & 3.9 litre V8

Diesel: 2.5 litre (200 Tdi & 300 Tdi)

ISBN: 978-1-85960-708-4

Book No: **3016**



LAND ROVER (CONTINUED)

Discovery Diesel 1998-2004 (UK)

Series 2 models
Diesel: 2.5 litre (2495cc) 5 cyl (TD5)
ISBN: 978-1-84425-606-8

Book No: 4606

Discovery Diesel 2004-2009 (UK)

Series 3 models
Diesel: 2.7 litre (2720cc) V6 turbo.
Does not cover petrol engines.
Does not cover 'Series 4' models introduced in May 2009
ISBN: 978-0-85733-562-3

Book No: 5562

Freelander 1997-2006 (UK)

Petrol: 1.8 litre (K16)
Diesel: 2.0 litre SOHC (L)
2.0 litre DOHC (Td4)
Does not cover 2.5 litre V6 petrol engine
ISBN: 978-0-85733-571-5

Book No: 5571

Freelander 2006-2014 (UK)

Diesel: 2.2 litre (2179cc)
Does not cover petrol engine
ISBN: 978-0-85733-636-1

Book No: 5636

MASSEY FERGUSON

TE-20, TE-A20, TE-F20, TE-H20, TE-D20 & FE-35

Petrol & diesel
ISBN: 978-1-56392-965-6

Book No: 60775

MAZDA

B1600, B1800, B2000 & B2600 1972-1993 (US)

2WD & 4WD
1.6, 1.8, 2.0 & 2.6 litre 4cyl carb & EFI
ISBN: 978-1-56392-084-4

Book No: 61030

RX7 Series 1, 2 & 3 1979-1985 (US)

12A & 13B rotary engines
Does not cover turbocharged engines
ISBN: 978-1-85010-050-8

Book No: 61035

RX7 Series 4 & 5 1986-1991 (US)

13B & 13B turbo rotary engines
ISBN: 978-1-56392-007-3

Book No: 61036

121 1987-1990

Petrol: 1.1, 1.3, 1.5 litre 4cyl SOHC 8 valve.
Includes carburettor and multi point fuel injected models (MPFI)
ISBN: 978-1-56392-306-7

Book No: 36736

323 RWD 1977-1985 (Gregory's)

1.3 litre, 1.4, litre, 1.5 litre (4 cyl) (Petrol)
Sedan (1977-80), wagon (1978-85), van (1981-85)
ISBN: 0-85566-611-0

Book No: 04182

323 BF-BW FWD 1981-1989

1.1 litre (E1)
1.3 litre (E3, B3)
1.5 litre (1500S twin carb)
1.5 litre (E5, B5)
1.6 litre (B6)
Does not cover diesel Turbo or 4WD
ISBN: 978-1-56392-264-0

Book No: 36750

323 BG-BA 1990-1996

Astina, Protege
1.3 litre SOHC 16v (B3)
1.3 litre DOHC 16v (Z5)
1.6 litre SOHC & DOHC 16v (B6)
1.8 litre SOHC & DOHC 16v (BP)
Does not cover turbo, V6 engine or 4WD
ISBN: 978-1-56392-265-7

Book No: 36751

323 1990-2003 (US)

1.5 litre DOHC (Z5)
1.6 litre DOHC (ZM)
1.6 litre SOHC (B6)
1.8 litre SOHC & DOHC (BP)
1.8 litre DOHC (FP)
Does not 1.8 litre (ZM) engine or 4WD
ISBN: 978-1-56392-443-9

Book No: 61015

Mazda3 2004-2012

2.0 litre (LF)
2.3 litre (L3)
2.5 litre (L5)
Does not turbo or diesel models
ISBN: 978-1-62092-011-4

Book No: 61712

MX5 1990- 2009 (US)

1.6 litre DOHC 16v MPi (B6)
1.8 litre DOHC 16v MPI (BP)
2.0 litre 4cyl DOHC 16v (MP)i
ISBN: 978-1-56392-851-2

Book No: 61016

626 RWD 1979-1982 (US)

1.6 litre 4cyl SOHC 8v,
2.0 litre 4cyl SOHC 8v
ISBN: 978-0-85696-996-6

Book No: 61040

626 GC GD FWD 1983-1990 (US)

2.0 litre SOHC 8v & 12v (FE)
2.2 litre SOHC 12v (F2) incl turbo
Includes EFI models
Does not cover diesel engines
ISBN: 978-1-56392-277-0

Book No: 36780

626/MX6 1983-1992 (US)

Front wheel drive - 4cyl & V6
1.6 litre SOHC 8v (F6)
2.0 litre SOHC 8v & 12v (FE)
2.2 litre SOHC 12v (F2)incl turbo
ISBN: 978-1-56392-373-9

Book No: 61041

626/MX6 GE/GF 1993-2001 (US)

4 cyl: 2.0 litre DOHC 16 valve (FS)
V6: 2.5 litre DOHC 24 valve (KL)
Does not cover 4 wheel steering
ISBN: 978-1-56392-440-8

Book No: 61042

Mazda6 2002-2012

2.3 litre DOHC 4 cyl
2.5 litre DOHC 4 cyl
3.0 litre DOHC V6
3.7 litre DOHC V6
Does not cover diesel, AWD or turbo models
ISBN 978-1-62092-012-1

Book No: 61743

MPV 1989-1998 (US)

4 cyl: 2.6 litre
V6: 3.0 litre SOHC (JE)
ISBN: 978-1-56392-142-1

Book No: 61020

Tribute 2001-2011 (US)

2WD & 4WD
2.0 litre 4cyl DOHC 16v Zetec (B)
2.3 litre 4cyl DOHC 16v (Z)
2.5 litre 4 cyl DOHC 16 valve
3.0 litre V6 SOHC 24v (Duratec)
ISBN: 978-1-56392-954-0

Book No: 36022



**MERCEDES-BENZ**

**190, 190D & 190E W201 1983-1993 (UK)**

Also covers 180E engine & running gear  
 Petrol: 1.8 litre, 2.0 litre, 2.3 litre 4cyl SOHC Fi & Carb (M102), 2.6 litre 6cyl SOHC (M103)  
 Diesel: 2.0 litre 4cyl SOHC Fi (M601), 2.5 litre 5cyl SOHC Fi Non-Turbo & Turbo (M602)  
 Does not cover 2.1 & 2.5 16v & Evo models  
 ISBN: 978-1-85960-450-2

Book No: **3450**

**190 1984-1988 (US)**

W201 Series  
 2.3 litre SOHC 8v (102.961, 102.985)  
 2.3 litre DOHC 16v (102.983)  
 Does not cover 2.6 litre 6 cyl petrol, or diesel engines. See Part No. 677 for petrol engines  
 ISBN: 978-1-85010-643-2

Book No: **63015**

**350 & 450 V8 W107/W108 1971-1980 (US)**

350SL & 450SL Roadster, 450SLC Coupe, 450SE, 450SEL Sedan  
 Petrol: 3.5 litre V8 SOHC (M116)  
 4.5 litre V8 SOHC (M117)  
 ISBN: 978-0-85696-698-9

Book No: **63030**

**250 & 280 6 Cyl W108/W111/W113/W114 1968-1972 (US)**

6 cylinder, carburettor & fuel injection.  
 Petrol: 2292cc (M180)  
 2496cc (M114)  
 2778cc (M130, M130V, M130E)  
 ISBN: 978-0-85696-346-8

Book No: **63020**

**250 & 280 6 Cyl W123 1976-1984 (UK)**

Sedan, Wagon, Coupe, short & long wheelbase  
 Petrol: 2525cc 6cyl SOHC Carb & Fi  
 2746cc 6cyl DOHC Carb & Fi Incl Turbo engines.  
 Does not cover S Class or Roadster  
 ISBN: 978-0-85696-677-4

Book No: **677**

**W123 Series Diesel 1976-1985 (UK)**

200D, 240D, 240TD, 300D, 300TD  
 1988cc & 2197cc 4cyl SOHC (Series 615)  
 2404cc & 2399cc 4cyl SOHC (Series 616)  
 2998cc 5cyl SOHC (Series 617)  
 3005cc 5cyl SOHC Turbo (Series 617)  
 Does not cover Petrol engines.  
 See Part No. 677 for petrol engines  
 ISBN: 978-1-85010-114-7

Book No: **1114**

**W124 Series 1985-1993 (UK)**

200, 230, 250, 260, 280, 300, 320  
 Sedan, Wagon, Coupe  
 Petrol: 2.0, 2.3 litre SOHC Carb & Fi (M102)  
 2.6, 3.0 litre SOHC 12v Fi (M103)  
 2.8, 3.0, 3.2 litre DOHC 24v Fi (M104)  
 Diesel: 2.0 litre SOHC (601)  
 2.5 litre SOHC 5cyl  
 3.0 litre 6cyl incl Turbo (603)  
 Does not cover Convertible, Limousine, 4x4, or E-Class range introduced August 1993. Does not cover 4-cyl 16-valve or V8 engines  
 ISBN: 978-1-85960-253-9

Book No: **3253**

**A Class W168 1998-2004 (UK)**

A140, A160, A170, A190 & A210  
 Hatchback (W168 series) Also covers major mechanical features of Vaneo.  
 Petrol: 1.4 litre (1397cc), 1.6 litre (1598cc), 1.9 litre (1898cc) & 2.1 litre (2084cc)  
 Diesel: 1.7 litre (1689cc).  
 Does not cover new A-Class range (W169 series) introduced 2005  
 ISBN: 978-1-84425-748-5

Book No: **4748**

**C Class W202 1993-2000 (UK)**

C180, C200, C220, C230, C250  
 Sedan and Wagon  
 Petrol: 1.8 litre 1797 & 1799cc, 2.0 litre 1998cc), 2.2 litre (2199cc), 2.3 litre (2295cc)  
 Diesel: 2.2 litre (2155cc), 2.5 litre (2497cc)  
 Does not cover supercharged (Kompressor) or 6-cyl petrol, C200 or CDI 220 Diesel, or AMG versions. Does not cover new C-Class range introduced September 2000  
 ISBN: 978-1-85960-511-0

Book No: **3511**

**C Class W203 2000-2007 (UK)**

C160, C180, C200, C220, C230 & C270  
 Sedan, Wagon & Coupe  
 Includes Kompressor models  
 Petrol: 1.8 litre (1796cc), 2.0 litre (1998cc) & 2.3 litre (2295cc)  
 Diesel: 2.2 litre (2148cc) & 2.7 litre (2685cc)  
 For V6 engines use manual number 63040.  
 Does not cover AMG models  
 ISBN: 978-1-84425-780-5

Book No: **4780**

**C Class W203 2001-2007 (US)**

C240, C320, C230, C280, C350  
 Sedan, Wagon & Coupe  
 Petrol:  
 4 cyl: 1.8 litre & 2.3 litre DOHC  
 V6: 2.6 litre, 3.0 litre, 3.2 litre, 3.5 litre  
 Does not cover AMG models  
 ISBN: 978-1-84425-780-5

Book No: **63040**

**Sprinter 1995-2006 (UK)**

Diesel: 2.2 litre (2148cc) 5-cyl  
 Does not cover petrol engines, 2.3 litre or 2.7 litre diesel, 4x4, automatic transmission  
 ISBN: 978-1-84425-902-1

Book No: **4902**

**MG**

**MGA 1955-1962 (UK)**

Tourer, Two-Seater, Coupe  
 Petrol: 1.5 litre (1489cc)  
 1.6 litre (1588cc, 1622cc)  
 ISBN: 978-0-85696-475-6

Book No: **475**

**MGB & GT (1800) 1962-1980 (US)**

Roadster & GT Coupe  
 Petrol: 1.8 litre (1798cc) (UK models)  
 B series engine  
 Does not cover MGB GT V8  
 ISBN: 978-0-85696-623-1

Book No: **66010**

**MG ZT 1996-2006 (UK)**

Petrol: 1796cc 4 cyl (K16, K18)  
 1997cc, 2497cc V6 (KV6)  
 Diesel: 1950cc 4 cyl (M47R)  
 Does not cover 4.6 litre V8 RWD  
 ISBN: 978-1-84425-292-3

Book No: **4292**

**MG ZS 1999-2006 (UK)**

Sedan, Hatch  
 Petrol:  
 4 cyl: 1.4 litre (1396cc), 1.6 litre (1588cc)  
 1.8 litre (1796cc) 4-cyl  
 V6: 2.0 litre (1997cc), 2.5 litre (2497cc)  
 Diesel: 2.0 litre (1994cc)  
 ISBN: 978-1-84425-384-5

Book No: **4384**

**Midget & Sprite 1958-1980 (UK)**

Midget 1500 Roadster 1974-1980  
 Austin Healey Sprite 1958-1972  
 MG Midget 1961-1979  
 Petrol: 948cc OHV (9CG)  
 1098cc OHV (10CG & 10CC)  
 1275cc OHV (12)  
 1493cc OHV (PE94J)  
 ISBN: 978-0-85696-588-3

Book No: **66015**



**MORRIS / MINI****Morris Minor 1956-1971 (UK)**

Sedan, Convertible & Wagon models  
948 & 1098cc engines  
ISBN: 9 780900 55024-9

Book No: **024****Mini 1959-1969 (UK)**

Sedan Mk I and II, Countryman/Traveller Mk I and II. Van and Pick-up Mk I and II. Cooper and Cooper S Mk I and II, Riley Elf Mk I, II and III. Wolseley Hornet Mk I, II and III.  
Petrol: 848cc, 970cc, 998cc, 1071cc, 1275cc  
ISBN: 978-0-85696-527-2

Book No: **527****Mini 1971-1978 (Gregory's)**

850cc, 1000cc, 1100cc, 1275cc (4 cyl) (Petrol)  
Sedan, wagon, van  
ISBN: 0-85566-336-7

Book No: **04002****Moke 1971-1982 (Gregory's)**

850cc, 1000cc, 1100cc, 1275cc (4 cyl) (Petrol)  
Sedan, wagon, van  
ISBN: 0-85566-336-7

Book No: **04002****Mini 1969-2001 (UK)**

Sedan, Wagon, Van and Pick-up, inc. Clubman, Cooper S MkIII, 1275GT, 1.3i, Cooper  
Petrol: 0.9 litre (848cc), 1.0 litre (998cc), 1.1 litre (1098cc) and 1.3 litre (1275cc)  
*Does not cover ERA Mini Turbo, or features specific to Cabriolet*  
ISBN: 978-1-85960-923-1

Book No: **646****Mini 2001-2006 (UK)**

Including Cooper and Cooper S. Covers major mechanical features of Cabriolet.  
Petrol: 1.6 litre (1598cc) including supercharged engine (W10B16AA, W10B16BA, W11B16AA)  
*Does not cover diesel models*  
ISBN: 978-1-84425-804-8

Book No: **4273****MITSUBISHI****Colt RB/RC/RD/RE 1982-1990**

1.4 litre SOHC (4G33)  
1.6 litre SOHC (4G32 Saturn)  
ISBN: 978-1-56392-279-4

Book No: **68720****Express L300 SA/SB/SC/SD/SE 1980-1985 (Gregory's)**

1.6 litre, 1.8 litre, 2.0 litre petrol (4 cyl) (Petrol)  
Wagon, van – except 4WD  
ISBN: 0-85566-612-9

Book No: **04213****Express SF/SG/SH 1987-1994 (Gregory's)**

2.0 litre, 2.4 litre petrol (4 cyl) (Petrol)  
Van, 2WD & 4WD  
ISBN: 0-85566-725-7

Book No: **06604****Galant/Cordia/Mirage 1983-1993 (US)**

1.5 litre SOHC (G15B, G4DJ, 4G15)  
1.6 litre SOHC (G32B)  
1.6 litre DOHC 16v (4G61)  
1.8 litre SOHC incl turbo (G62B)  
2.0 litre SOHC (G63B, 4G63)  
2.0 litre DOHC 16v (4G32)  
2.4 litre SOHC (G64B)  
*Does not cover V6 engines or 4WD*  
ISBN: 978-1-56392-091-2

Book No: **68020****Galant HG, HH 1990-1994 (US)**

US Eclipse model  
GSR, VR4, 2WD & 4WD  
1.8 litre SOHC (4G37)  
2.0 litre DOHC turbo & non turbo (4G63)  
ISBN: 978-1-56392-097-4

Book No: **68030****Galant 1994-2002 (US)**

Sedan  
2.4 litre SOHC & DOHC 4 cyl (4G64)  
3.0 litre SOHC V6 (6G72)  
ISBN: 978-1-56392-485-9

Book No: **68035****Lancer CB/CC 1990-1996**

Carburettor & EFI  
1.3 litre SOHC (4G13)  
1.5 litre SOHC (4G15)  
1.6 litre SOHC (4G92)  
1.8 litre SOHC (4G93)  
*Does not cover 4WD DOHC engine or turbocharged model*  
ISBN: 978-1-56392-280-0

Book No: **68750****Lancer/Mirage CE/CG/CH 1996-2007**

Coupe Sedan Hatch  
GLi GLXi MR VR-X  
1.5 litre SOHC 12 valve (4G15)  
1.8 litre SOHC 16 valve (4G93)  
2.0 litre SOHC 16 valve (4G94)  
2.4 litre SOHC 16 valve (4G69)  
ISBN: 978-1-56392-940-3

Book No: **68751****Magna TM/TN/TP 1985-1991**

2.6 litre carburettor (Astron II - V571, V572)  
2.6 litre EFI (Astron II - V511, V512)  
ISBN: 978-1-56392-268-8

Book No: **68755****Magna TR/TS 1991-1996**

4 cyl: 2.6 litre carburettor (W591, W592)  
2.6 litre EFI (W532)  
V6: 3.0 litre V6 SOHC MPI (6G72)  
ISBN: 978-1-56392-269-5

Book No: **68756****Magna TE/TF/TH/TJ/TL/TW, Verada KE/KF/KH/KJ/KL/KW 1996-2005**

3.0 litre V6 SOHC (6G72)  
3.5 litre V6 SOHC (6G74)  
*Does not cover 2.4 litre 4 cyl engine*  
ISBN: 978-1-56392-938-0

Book No: **68757****Pajero NA/NB/NC/ND/NF/NG/NH/NJ 1983-1997**

Petrol: 2.6 litre 4cyl SOHC (4G54)  
3.0 litre V6 SOHC (6G72)  
3.5 litre V6 DOHC (6G74)  
Diesel: 2.5 litre 4 cyl (4D56)  
2.5 litre 4 cyl turbo (4D56T)  
2.8 litre 4 cyl (4M40)  
2.8 litre 4 cyl turbo (4M40T)

ISBN: 978-1-56392-382-1

Book No: **68765****Pajero NL/NM/NP/NS/NT 1997-2014**

Petrol: 3.0 litre V6 SOHC 12v (6G72)  
3.5 litre V6 SOHC & DOHC 24v (6G74)  
3.8 litre V6 SOHC 8v (6G75)  
Diesel: 2.8 litre 4 cyl (4M40)  
2.8 litre 4 cyl turbo (4M40T)  
3.2 litre 4 cyl turbo (4M41)

ISBN: 978-1-62092-139-1

Book No: **68766****Sigma GE 1978-1980 (Gregory's)**

1600 cc, 1850 cc, 2000 cc, 2600 cc (4 cyl) (Petrol)  
Sedan, wagon  
ISBN: 0-85566-442-8

Book No: **04116****Sigma GH/GJ 1980-1983 (Gregory's)**

1.6 litre, 2.0 litre, 2.6 litre (4 cyl) (Petrol)  
Sedan, wagon  
ISBN: 0-85566-632-3

Book No: **04189****Sigma GK/GN 1984-1987 (Gregory's)**

1.6 litre, 2.0 litre, 2.6 litre (4 cyl) (Petrol)  
Sedan, wagon  
ISBN: 0-85566-653-6

Book No: **04225**



**Triton (L200) 1983-1994 (UK)**

Petrol: 2.0 litre 4 cyl (4G63)  
2.4 litre 4 cyl (4G64)  
2.6 litre 4 cyl (4G54)  
3.0 litre V6 (6G72)

ISBN: 978-0-85763-652-1

Book No: **1944**

**Valiant R/S/AP5/AP6/VC/VE/VF  
1962-1970 (Gregory's)**

225 ci (6 cyl) (Petrol)  
Sedan, wagon, hardtop, utility

ISBN: 0-85566-024-4

Book No: **04078**

**Valiant VG/VH 1970-1973 (Gregory's)**

215 ci, 245 ci, 265 ci (6 cyl) (Petrol)  
Sedan, wagon, hardtop, utility

ISBN: 0-85566-052-X

Book No: **04052**

**NISSAN**

**120Y B210 1974-1979 (Gregory's)**

1171cc (4 cyl) (Petrol)  
Sedan, wagon, coupe

ISBN: 0-85566-177-1

Book No: **04111**

**200B 810 Series 1977-1981 (Gregory's)**

2.0 litre (4 cyl) (Petrol)  
Sedan, wagon

ISBN: 0-85566-456-8

Book No: **04175**

**300ZX Z31 1984-1989 (US)**

3.0 litre VG30E  
3.0 litre turbo VG30ET

ISBN: 978-1-85010-563-3

Book No: **72010**

**350Z, Infiniti G35 2003-2008 (US)**

350Z 2003 to 2006  
Infiniti G35 2003 to 2007 except 2007 Sedan  
3.5 litre V6 DOHC

ISBN: 978-1-56392-723-2

Book No: **72011**

**Bluebird Series 1, 2 & 3 1981-1986**

2.0 litre 4cyl SOHC 8v (L20B, CA20S)

ISBN: 978-1-56392-283-1

Book No: **72720**

**Bluebird U13 1993-2006 (US)**

Petrol: 2.4 litre 4cyl DOHC 16v (KA24DE)  
2.5 litre 4cyl DOHC 16v (QR25DE)  
3.5 litre V6 DOHC 24v (VQ35DE)

Covers US Altima, which is known as Bluebird in Australia

ISBN: 978-1-56392-566-5

Book No: **72015**

**Datsun 120Y B210 1973-1979 (US)**

Sedan, Hatch, Wagon  
1171cc OHV (A12)  
1288cc OHV (A13)  
1397cc OHV (A14)

ISBN: 978-0-85696-228-8

Book No: **28007**

**Datsun 240Z/260Z/280Z 1970-1978 (US)**

2.4 litre 6 cyl SOHC (L24)  
2.6 litre 6 cyl SOHC (L26)  
2.8 litre 6 cyl SOHC (L28)

ISBN: 978-0-85696-206-6

Book No: **28012**

**Datsun 280ZX 1979-1983 (US)**

2.8 litre 6 cyl (L28)

ISBN: 978-1-85010-124-6

Book No: **28014**

**Dualis 2007-2012 (UK)**

Petrol: 1.6 litre (HR16DE)  
2.0 litre (MR20DE)  
Diesel: 1.5 litre (K9K)  
2.0 litre (M9R)

Does not cover 1.6 litre diesel engine

ISBN: 978-1-85010-124-6

Book No: **5610**

**Maxima J30 1985-1992 (US)**

3.0 litre V6 SOHC (VG30E)

Does not cover VG30DE DOHC engine

ISBN: 978-1-56392-365-4

Book No: **72020**

**Maxima A32/A33 1993-2004 (US)**

3.0 litre V6 SOHC (VG30E)  
3.0 litre V6 DOHC (VQ30DE)  
3.5 litre V6 DOHC (VQ35DE)

Does not cover VG30DE 3.0 litre DOHC engine

ISBN: 978-1-56392-594-8

Book No: **72021**

**Micra K11 1993-2002 (UK)**

Hatchback including auto transmission (N-CVT) models

Petrol: 1.0 litre (998cc), 1.3 litre (1275cc) & 1.4 litre (1348cc)

ISBN: 978-1-84425-155-1

Book No: **3254**

**Micra 2002-2010 (UK)**

Petrol: 1.0 litre (CR10DE)  
1.2 litre (CR12DE)  
1.4 litre (CD14DE)

Does not cover 1.6 litre petrol engines, diesel models, C+C Coupe Convertible

ISBN: 978-0-85733-570-8

Book No: **4734**

**Navara, 720, Pathfinder D21  
1980-1996**

2WD & 4WD

4 cyl: 2.0 litre SOHC (L20B) 1980 on  
2.0 litre SOHC (Z20) 1984-1985  
2.2 litre SOHC (Z22) 1981-1983  
2.4 litre SOHC (Z24) 1986 on  
2.4 litre SOHC 8 plug (Z24i)  
2.4 litre SOHC (KA24E)

V6: 3.0 litre SOHC (VG30E)

ISBN: 978-1-56392-644-0

Book No: **72730**

**Navara D22, Pathfinder R50  
1996-2004 (US)**

2WD & 4WD

4 cyl: 2.4 litre DOHC (KA24DE)

V6: 3.3 litre SOHC (VG33E)  
3.5 litre DOHC (VQ35DE)

ISBN: 978-1-56392-610-5

Book No: **72031**

**Navara D40, Pathfinder R51  
2005-2013**

2WD & 4WD

Petrol: 4.0 litre petrol (VQ40DE)

Diesel: 2.5 litre diesel (YD25DDTI)

Does not cover 3.0 litre V6 diesel (V9X)

ISBN: 978-1-62092-067-1

Book No: **72732**

**Patrol MQ 1980-1987 (Gregory's)**

Wagon, hardtop, utility

3.3 litre diesel (SD33)  
3.3 litre diesel turbo (SD33T)

ISBN: 0-85566-610-2

Book No: **05500**

**Patrol GQ 1988-1997**

Petrol: 3.0 litre 6 cyl SOHC Carb and EFI (RB30S)  
4.2 litre 6 cyl OHV Carb & EFI (TB42)

Diesel: 4.2 litre 6cyl OHV (TD42)

Does not cover 2.8 litre diesel

ISBN: 978-1-56392-383-8

Book No: **72760**



**NISSAN (CONTINUED)**

**Patrol Y61/GU 1998-2014**

Petrol: 4.5 litre 6 cyl (TB45E)  
4.8 litre 6 cyl (TB48DE)  
Diesel:  
2.8 litre 4 cyl SOHC turbo (RD28ETI)  
3.0 litre 4 cyl DOHC turbo (ZD30DDTI)  
4.2 litre 6 cyl OHV (TD42)  
4.2 litre 6 cyl OHV turbo (TD42T, TD42Ti)

*Does not cover Y62 models*  
ISBN: 978-1-62092-114-2

Book No: **72761**

**Pintara R31 1986-1989 (Gregory's)**

2.0 litre (4 cyl) (Petrol)  
Sedan, wagon  
ISBN: 0-85566-634-X

Book No: **04240**

**Pintara U12 1989-1993 (Gregory's)**

2.0 litre, 2.4 litre (4 cyl) (Petrol)  
Sedan, hatchback  
ISBN: 0-85566-715-X

Book No: **06600**

**Primera 1990-8/1999 (UK)**

Sedan, hatch, wagon  
1.6 litre (1597cc), 2.0 litre (1998cc)  
ISBN: 978-1-85960-700-8

Book No: **1851**

**Pulsar N12 1982-1987**

Sedan, hatch, coupe, wagon  
1.3 litre 4cyl SOHC carb (E13)  
1.5 litre 4cyl SOHC carb (E15)  
1.6 litre 4cyl SOHC carb (E16)  
ISBN: 978-1-56392-270-1

Book No: **72770**

**Pulsar N13 1987-1991**

Sedan, hatch  
1.6 litre 4cyl SOHC MPI (16LE)  
1.8 litre 4cyl SOHC MPI (18LE)  
ISBN: 978-1-56392-271-8

Book No: **72771**

**Pulsar N14 1991-1995**

Sedan, hatch  
1.6 litre 4cyl DOHC 16v MPI (GA16DE)  
2.0 litre 4cyl DOHC 16v MPI (SR20DE)  
ISBN: 978-1-56392-272-5

Book No: **72772**

**Pulsar N15 1995-2000**

Sedan, hatch  
1.4 litre 4cyl DOHC 16v MPI (GA14DE)  
1.6 litre 4cyl DOHC 16v MPI (GA16DE)  
*Does not cover 2.0 litre SSS models or diesel engines*

ISBN: 978-1-56392-635-8

Book No: **72773**

**Pulsar N16 2000-2005**

Sedan, hatch  
1597cc DOHC 16v MPI (QG16DE)  
1769cc DOHC 16v MPI (QG18DE)  
ISBN: 978-1-56392-790-4

Book No: **72774**

**Sentra 1982-1994 (US)**

1.5L 4cyl SOHC(E15)  
1.6L 4cyl SOHC(E16)  
1.6L 4cyl SOHC (GA16i)  
1.6L 4cyl DOHC(GA16DE)  
2.0L 4cyl DOHC (SR20DE)  
*Doesn't cover diesel,4WD or Pulsar*

ISBN: 978-1-56392-150-6

Book No: **72050**

**Skyline R31 1986-1991 (Gregory's)**

3.0 litre (6 cyl) (Petrol)  
Sedan, wagon  
ISBN: 0-85566-739-7

Book No: **04242**

**PEUGEOT**

**205 1983-1997 (UK)**

Hatchback, Cabriolet, GTi and special / limited editions.  
Petrol: 1.0 litre (954cc), 1.1 litre (1124cc), 1.4 litre (1360cc), 1.6 litre (1580cc), 1.9 litre (1905cc).  
*For information on Diesel engines see Manual No. 0950.*  
*Does not cover T16 or features specific to Van*  
ISBN: 978-1-85960-769-5

Book No: **932**

**206 1998-2001 (UK)**

Hatchback  
Petrol: 1.1 litre (1124cc), 1.4 litre (1360cc), 1.6 litre (1587cc)  
Diesel: 1.9 litre (1868cc), 2.0 litre (1997cc) inc. turbo.  
*Does not cover models with 16-valve petrol engines (XSi, GTi, Grand Tourisme etc) or Cabriolet. Does not cover features specific to Van*  
ISBN: 978-1-85960-757-2

Book No: **3757**

**206 2002-2009 (UK)**

Hatch, Wagon, Coupe, Cabriolet  
Petrol: 1.1 litre SOHC (TU1), 1.4 litre SOHC 8v (TU3), 1.4 litre DOHC 16v (ET3), 1.6 litre SOHC 8v (TU5), 2.0 litre DOHC 16v (EW)  
Diesel: 1.4 litre SOHC 8v (DV4TD), 2.0 litre SOHC 8v HDI (DW10TD)  
*Does not cover 1.6L HDi, 1.9L Dsl, 1.6L 16v Pet, GTi/180*  
ISBN: 978-0-85733-559-3

Book No: **4613**

**207 2006-2009 (UK)**

Hatch, Wagon. Also covers major mechanical features of CC (Coupe Cabriolet) and Van.  
Petrol: 1.4 litre (1360cc & 1397cc) 1.6 litre (1587cc & 1598cc),  
Diesel: 1.4 litre (1398cc), 1.6 litre (1560cc)  
*Does not cover 1.6 litre turbo petrol engines*  
ISBN: 978-1-84425-787-4

Book No: **4787**

**306 1993-2002 (UK)**

Petrol: 1.1 litre (TU1), 1.4 litre (TU3), 1.6 litre (TU5), 1.8 litre (XU7), 2.0 litre (XU10)  
Diesel: 1.8 litre (XUD7), 1.9 litre turbo & non-turbo (XUD9), 1.9 litre incl. EFI (DW8), 2.0 litre HDi incl. turbo (DW10)  
*Does not cover Cabriolet & Roadster. Does not cover GTi-6 model*  
ISBN: 978-1-84425-180-3

Book No: **3073**

**307 2001-2008 (UK)**

Hatchback & Wagon  
Petrol: 1.4 litre (1360cc) SOHC, 1.6 litre (1587cc) & 2.0 litre (1997cc)  
Diesel: 1.4 litre SOHC (1398cc), 1.6 litre (1560cc) & 2.0 litre (1997cc)  
*Does not cover 307CC or Coupe*  
ISBN: 978-1-84425-800-0

Book No: **4147**

**308 Petrol & Diesel 2007-2012 (UK)**

308 Hatchback & Wagon  
*Does not cover 2.0 litre petrol or 2.0 litre diesel engines*  
Petrol: 1.3 litre (1397cc) & 1.6 litre (1598cc)  
Diesel: 1.6 litre (1560cc) & 2.0 litre (1997cc)  
ISBN: 978-0-85733-561-6

Book No: **5561**

**405 Petrol 1988-1997 (UK)**

Sedan and Wagon, inc. Mi-16  
Petrol: 1.4 litre (1360cc) (TU3), 1.6 litre (1580cc) (XU5), 1.8 litre (1761cc) (XU7), 1.9 litre (1905cc) (XU9), 2.0 litre (1998cc) (XU1)  
*Does not cover four-wheel-drive models*  
ISBN: 978-1-85960-786-2

Book No: **1559**





**405 Diesel 1988-1997 (UK)**

Sedan, Wagon  
Diesel: 1.8 (1769cc) turbo and 1.9 (1905cc) turbo and non-turbo  
ISBN: 978-1-85960-771-8

Book No: **3198**

**406 1996-1999 (UK)**

Sedan, Wagon  
Petrol 4 cyl: 1.6 litre (1580cc), 1.8 litre (1761cc) 2.0 litre (1998cc)  
Diesel: 1.9 litre (1905cc), 2.1 litre (2088cc).  
*Does not cover Coupe, 2.0 litre Turbo or 3.0 litre V6 engines, or 2.0 litre HDi turbo-diesel engine*  
ISBN: 978-1-85960-983-5

Book No: **3394**

**406 1999-2002 (UK)**

Sedan, Wagon  
Petrol 4 cyl: 1.8 litre (1749 and 1761cc) and 2.0 litre (1997cc)  
Diesel: 2.0 litre (1997cc) and 2.2 litre (2179cc).  
*Does not cover Coupe, 2.0 litre Turbo, 2.0 litre direct injection (HPi), 2.2 litre (4 cyl) or 3.0 litre (V6) engines*  
ISBN: 978-1-85960-982-8

Book No: **3982**

**407 2004-2011 (UK)**

Sedan, Wagon incl most features of Coupe  
Diesel: 1.6 litre (DV6TED4)  
2.0 litre (DW10BTE4, DW10CTED4)  
*Does not cover petrol or bioflex engines, or 2.2 litre, 2.7 litre or 3.0 litre diesel engines*  
ISBN: 978-0-85733-550-0

Book No: **5550**

**505 1979-1989 (UK)**

Sedan Wagon  
Petrol 4 cyl: 1.8 litre (1796cc), 2.0 litre (1971 & 1995cc), 2.2 litre (2165cc)  
*Does not cover diesel or V6 engines*  
ISBN: 978-0-85696-762-7

Book No: **762**

**PORSCHE**

**911 1965-1989 (US)**

Coupe, Targa & Cabriolet  
Petrol: 2.0 litre, 2.2 litre, 2.4 litre, 2.7 litre, 3.0 litre, 3.2 litre  
4 & 5 speed manual gearboxes and Sportomatic covered.  
*Does not cover Turbo or Carrera 4*  
ISBN: 978-1-85010-698-2

Book No: **80020**

**914 1969-1976 (US)**

Petrol: 1.7 litre, 1.8 litre, 2.0 litre OHV  
5 Speed manual gearbox  
*Does not cover 914/6 6cyl engine*  
ISBN: 978-0-85696-239-4

Book No: **80025**

**924 1976-1982 (US)**

Petrol: 2.0 litre 4cyl SOHC Fi turbo & non-turbo  
4 & 5 speed transmissions  
ISBN: 978-1-85010-073-7

Book No: **80030**

**944 1983-1989 (US)**

Petrol: 2.5, 2.7, 3.0 litre incl turbo models  
*Does not contain information specific to 944S models*  
ISBN: 978-1-85010-657-9

Book No: **80035**

**RANGE ROVER**

**Range Rover 1970-10/1992 (UK)**

3.5 & 3.9 litre V8 Petrol models  
*Does not cover 4.2 litre & diesel*  
ISBN: 978-1-85960-274-4

Book No: **606**

**RENAULT**

**Renault 4 1961-1986 (UK)**

Sedan, Wagon & Van (Classic Reprint)  
Petrol: 0.7 litre (747cc), 0.8 litre (845cc), 1.1 litre (1108cc)  
ISBN: 978-1-85010-299-1

Book No: **072**

**Renault 18 1979-1986 (UK)**

Sedan and Wagon, Deauville and Turbo  
Petrol: 1.4 litre (1397cc), 1.6 litre (1565cc & 1647cc), 2.0 litre (1995cc)  
ISBN: 978-1-85010-281-6

Book No: **598**

**Renault 19 Petrol 1989-1996 (UK)**

Hatchback, Sedan/Chamade and Cabriolet, incl 16-valve  
Petrol: 1.2 litre (1237cc), 1.4 litre (1390 & 1397cc), 1.7 litre (1721cc) & 1.8 litre (1764 & 1794cc)  
ISBN: 978-1-85960-932-3

Book No: **1646**

**Renault 19 Diesel 1989-1995 (UK)**

Hatchback, Sedan/Chamade  
Diesel: 1.9 litre (1870cc)  
ISBN: 978-1-85960-935-4

Book No: **1946**

**Renault 21 1986-1994 (UK)**

Sedan Hatch Wagon incl. Turbo  
Petrol: 1.7 litre (1721cc), 2.0 litre (1965cc & 1995cc), 2.2 litre (2165cc) incl. 12 valve  
ISBN: 978-1-85960-275-1

Book No: **1397**

**Clio Petrol 1991-1998 (UK)**

Hatchback, inc. 16-valve  
Petrol: 1.1 litre (1108cc), 1.2 litre (1149 and 1171cc), 1.4 litre (1390cc), 1.8 litre (1764cc, 1783cc, 1794cc)  
*For coverage of Diesel models, see Manual No. 3031.*  
*Does not cover 'Williams' models*  
ISBN: 978-1-85960-459-5

Book No: **1853**

**Clio 1998-2001 (UK)**

Hatchback (plus most features of Kangoo Van)  
Petrol: 1.2 litre (1149cc), 1.4 litre (1390cc), 1.6 litre (1598cc)  
Diesel: 1.9 litre (1870cc) normally aspirated  
*Does not cover 1.2 litre 16v, 2.0 litre 16v or 3.0 litre V6 petrol, or 1.9 litre turbo-diesel*  
ISBN: 978-1-85960-906-4

Book No: **3906**

**Clio 2001-2005 (UK)**

Hatchback (plus most features of Kangoo Van), also covers Campus & Campus Sport models to 2007  
Petrol: 1.2 litre (1149cc), 1.4 litre (1390cc) & 1.6 litre (1598cc)  
Diesel: 1.5 litre (1461cc) turbo  
*Does not cover 1.9 litre turbo-diesel or Renaultsport 172, 182 or V6 models*  
ISBN: 978-1-84425-744-7

Book No: **4168**

**Clio 2005-2009 (UK)**

Hatchback  
Petrol: 1.2 litre (1149cc)  
1.4 litre (K4J780)  
1.6 litre (K4M800/801)  
Diesel: 1.5 litre (K9K764/K9K766/K9K768)  
*Does not cover wagon, Sport Tourer, Campus, Renaultsport 197, semi-automatic transmission*  
ISBN: 978-1-84425-788-1

Book No: **4788**

**Megane, Scenic 1996-1999 (UK)**

Hatchback, Sedan (Classic) & Coupe (96-Mar 99) and Scenic (97-July 99)  
Petrol: 1.4 litre (1390cc), 1.6 litre (1598cc) & 2.0 litre (1998cc)  
Diesel: 1.9 litre (1870cc), inc. turbo  
*Does not cover Cabriolet models*  
ISBN: 978-1-84425-591-7

Book No: **3395**



**RENAULT (CONTINUED)**

**Megane, Scenic 1999-2002 (UK)**

Petrol & Diesel. Megane Hatchback, Sedan (Classic) and Coupe (not Cabriolet), Scenic MPV (not RX4)

Petrol: 1.4 litre (1390cc), 1.6 litre (1598cc) and 2.0 litre (1998cc)

Diesel: 1.9 litre (1870cc) incl turbo

*Does not cover 2.0 litre IDE (Injection Direct Essence) or 1.8 litre engines*

ISBN: 978-1-85960-916-3

Book No: **3916**

**Megane Petrol & Diesel 2002-2005 (UK)**

Petrol engines: 1.4 litre (1390cc), 1.6 litre (1598cc)

Diesel: 1.5 litre (1461cc), 1.9 litre (1870cc)

*Does not cover 2.0 litre (1998cc) petrol models or features specific to Coupé Cabriolet models*

*For coverage of Renault Scenic range, refer to book number 4297*

ISBN: 978-1-84425-284-8

Book No: **4284**

**Laguna 1994-2000 (UK)**

Hatchback and Wagon

Petrol: 1.6 litre (1598cc), 1.8 litre (1783 and 1794cc), 2.0 litre (1948 and 1998cc)

Diesel: 1.9 litre (1870cc), 2.2 litre (2188cc) incl turbo.

*Does not cover 3.0 litre V6 or 2.0 litre 16-valve VT engines, or 1.9 litre 'common rail' (dCi) diesel engine*

ISBN: 978-1-85960-599-8

Book No: **3252**

**Laguna 2001-2005 (UK)**

Hatchback & Sport Tourer (Wagon). Does not cover 'Phase 2' model range introduced Feb 2005.

Petrol: 1.6 litre (1598cc) DOHC (K4M), 1.8 litre (1783cc) DOHC (F4P), 2.0 litre (1998cc) DOHC (F4R)

Diesel: 1.9 litre (1870cc) SOHC 8 valve (F9Q), 2.2 litre (2188cc) DOHC 16 valve (G9T)

*Does not cover models with 2.0 litre iDE or 3.0 litre V6 engines*

ISBN: 978-1-84425-283-1

Book No: **4283**

**Scenic 2003-2006 (UK)**

Renault Scenic and Grand Scenic

Petrol: 1390 cc (1.4 litre) 1598 cc (1.6 litre)

Diesel: 1461 cc (1.5 litre) 1870 cc (1.9 litre) dCi

*Does not cover 2.0 litre petrol models*

ISBN: 978-1-84425-297-8

Book No: **4297**

**Traffic 2001-2011 (UK)**

Van

Diesel: 1.9 litre (F9Q760, F9Q762) 2.0 litre (M9R630)

*Does not cover petrol engines, 2.5 litre diesel engine or Quickshift auto transmission*

ISBN: 978-0-85733-551-7

Book No: **5551**

**ROVER**

**820, 825, 827 1986-1995 (UK)**

Sedan, Fastback and Coupe incl Turbo, Vitesse, Sterling

Petrol: 2.0 litre (1994cc), 2.5 litre (2494cc), 2.7 litre (2675cc)

*Does not cover Diesel models. Does not cover 8-valve carburettor engine*

ISBN: 978-1-85960-273-7

Book No: **1380**

**3500 SD1 1976-1987 (UK)**

Hatchback, incl Vanden Plas & Vitesse

Petrol: 3.5 litre V8 (3528cc)

ISBN: 978-1-85010-363-9

Book No: **365**

**75 1996-2006 (UK)**

Petrol: 1796cc 4 cyl (K16, K18) 1997cc, 2497cc V6 (KV6)

Diesel: 1950cc 4 cyl (M47R)

ISBN: 978-1-84425-292-3

Book No: **4292**

**SAAB**

**Saab 90, 99 & 900 & Turbo 1979-1993 (UK)**

Sedan, Hatchback & Coupe inc. Turbo

Petrol: 2.0 litre (1985cc) 8v & 16v

*Does not cover features specific to Cabriolet.*

ISBN: 978-1-85960-064-1

Book No: **765**

**Saab 900 10/1993-1998 (UK)**

Hatchback & Coupe

Petrol: 2.0 litre (1985cc) & 2.3 litre (2290cc) 4-cyl, inc. Turbo.

*Does not cover Cabriolet or 'Sensonic' clutchless transmission, or 2.5 litre V6*

ISBN: 978-1-85960-512-7

Book No: **3512**

**Saab 9000 (4 Cyl) 1985-1998 (UK)**

Hatchback & Sedan, inc. Turbo

Petrol: 2.0 litre (1985cc) & 2.3 litre (2290cc) 4-cyl.

*Does not cover V6*

ISBN: 978-1-85960-764-0

Book No: **1686**

**Saab 9-3 1998-8/2002 (UK)**

Coupe, Hatchback & Convertible. Also covers Convertible models to August 2003.

Petrol: 2.0 litre (1985cc) & 2.3 litre (2290cc), incl turbo.

Diesel: 2.2 litre (2171cc).

ISBN: 978-1-84425-614-3

Book No: **4614**

**Saab 9-3 9/2002-9/2007 (UK)**

Sedan & Wagon/SportWagon (from Sept 2002) & Convertible (from Sept 2003)

Petrol: 2.0 litre (1998cc) turbo

Diesel: 1.9 litre (1910cc)

*Does not cover models with 1.8 litre or 2.8 litre petrol engines, or 2.2 litre diesel engine*

ISBN: 978-1-84425-749-2

Book No: **4749**

**SAAB 9-3 Petrol & Diesel 2007-2011 (UK)**

SAAB 9-3 Sedan, Wagon & Convertible.

Petrol: 2.0 litre (1998cc)

Diesel: 1.9 litre (1910cc)

*Does not cover 1.8 litre or 2.8 litre engines*

ISBN: 978-0-85733-569-2

Book No: **5569**

**Saab 9-5 1997-2005 (UK)**

Sedan & Wagon

Petrol: 2.0 litre (1985cc) & 2.3 litre (2290cc)

*Does not cover 3.0 litre V6*

ISBN: 978-1-84425-805-5

Book No: **4156**

**Saab 9-5 2005-2010 (UK)**

Sedan & Wagon

Petrol: 2.0 litre (B205)

2.3 litre (B235)

Diesel: 1.9 litre (Z19DTH)

*Does not cover Biopower models*

ISBN: 978-1-84425-891-8

Book No: **4891**



**SEAT**

**Ibiza, Cordoba 1993-1999 (UK)**

Ibiza Hatchback & Cordoba Sedan, Wagon (Vario) & Coupe

Petrol: 1.0 litre (999 & 1043cc), 1.3 litre (1272cc), 1.4 litre (1390cc SOHC & 1391cc), 1.6 litre (1595 & 1598cc) & 2.0 litre (1984cc)

Diesel: 1.9 litre (1896cc), incl turbo

*Does not cover 1390cc DOHC or 1781cc petrol engines*

ISBN: 978-1-85960-571-4

Book No: **3571**

**Ibiza, Malaga 1985-1992 (UK)**

Ibiza Hatchback & Malaga Sedan & Hatchback

Petrol: 0.9 litre (903cc), 1.2 litre (1193cc) & 1.5 litre (1461cc)

ISBN: 978-1-85010-609-8

Book No: **1609**

**SKODA**

**Felicia 1995-2001 (UK)**

Hatchback & Wagon

Petrol: 1.3 litre (1289cc) & 1.6 litre (1598cc).

Diesel: 1.9 litre (1896cc).

*Does not cover features specific to Van, Pick-Up & 'Fun'*

ISBN: 978-1-85960-937-8

Book No: **3505**

**Octavia 1998-2004 (UK)**

Hatchback & Wagon, including VRS

Petrol: 1.4 litre 16v (1390cc), 1.6 litre (1595cc & 1598cc), 1.8 litre (1781cc) & 2.0 litre (1984cc), incl turbo

Diesel: 1.9 litre (1896cc) SDi and TDi.

*Does not cover FSi or 4x4 models or models with Tiptronic transmission, or 1.4 litre (1397cc) 8-valve engines*

ISBN: 978-1-84425-285-5

Book No: **4285**

**Octavia 2004-2011 (UK)**

Hatchback & Wagon

Diesel: 1.9 litre (BJB, BKC, BLS, BXE)  
2.0 litre SOHC 8v (BMM)  
2.0 litre DOHC 16v(BKD, BMN)  
2.0 litre common rail (CBBB, CBDB, CEGA)

*Does not cover 1.6 litre engine, 4x4, vRS, Tour or Scout models*

ISBN: 978-0-85733-549-4

Book No: **5549**

**Fabia 2000-2006 (UK)**

Hatchback, Sedan & Wagon, inc. vRS

Petrol: 1.2 litre (1198cc) 3-cyl, 1.4 litre (1390cc & 1397cc) 4-cyl

Diesel: 1.4 litre (1422cc) 3-cyl, 1.9 litre (1896cc) 4-cyl, incl turbo

*Does not cover 1.0 litre (997cc) or 2.0 litre (1984cc) petrol engines*

ISBN: 978-1-84425-376-0

Book No: **4376**

**SUBARU**

**1600 & 1800 1979-1994**

1600 & 1800, DL, GL, Leone, Brumby, 2WD & 4WD, incl air suspension.

1600cc & 1800cc 4cyl OHV

1800cc 4cyl OHC carburettor, EFI, turbo

ISBN: 1-56392-285-1

Book No: **89703**

**Impreza 2002-2011**

**WRX 2002-2014**

**Impreza WRX STI 2004-2014**

Sedan, hatchback

2.0 SOHC (EJ20), 2.0 DOHC, 2.0 DOHC turbo, 2.5 SOHC, 2.5 DOHC turbo

*Does not cover 2.0 litre (FB20) engine*

ISBN: 978-1-62092-192-0

Book No: **89780**

**Liberty 1989-1998**

Wagon, Sedan

2.0, 2.2 litre SOHC 16v turbo & non turbo  
2.5 litre DOHC 16v EFI

*Does not cover RS Turbo with 2.0 litre 4Cam turbo (as WRX).*

*Does not cover Forester model as released in Australia*

ISBN: 978-1-56392-338-8

Book No: **89706**

**Liberty, Forester 2000-2009 (US)**

Manual lists "Legacy" on the cover which is the American name of Liberty sedan.

Outback wagon is also covered

2.5 litre 16v SOHC MPI (EJ25, EJ251)  
2.5 litre 16v DOHC MPI turbo, inlet VVT (EJ25D)

*Forester is covered with a 2.5 litre engine only to 2008. Also covers Baja sedan ute.*

*Does not cover Outback 6 cylinder engines*

ISBN: 978-1-56392-619-8

Book No: **89101**

**SUZUKI**

**Sierra, Vitara 1982-1997 (UK)**

SJ410, SJ413 and Vitara incl Santana, Samurai

Petrol: 1.0 litre (970cc)

1.3 litre (1298 & 1324cc)

1.6 litre (1590cc) SOHC Carb & Fi

*Does not cover V6 & Diesel engines*

ISBN: 978-1-85960-280-5

Book No: **1942**

**Supercarry 1986-10/1994 (UK)**

1.0 litre (970cc)

*Does not cover Suzuki ST80 and 90 series Vans, specialist body conversions*

ISBN: 978-1-85960-171-6

Book No: **3015**

**Swift 1990-1993 (US)**

1.3 litre 4 cyl SOHC carburettor

*Does not cover EFI engine or 1.0L 3cyl engine*

ISBN: 978-1-56392-278-7

Book No: **41725**

**TOYOTA**

**Aurion GSV40R/GSV50R 2006-2013**

3.5 litre (2GR-FE)

ISBN: 978-1-56392-944-1

Book No: **92709**

**Avalon MCX10 2000-2006**

V6: 3.0 litre (1MZ-FE)

ISBN: 978-1-56392-704-1

Book No: **92708**

**Avensis 1998-1/2003 (UK)**

Sedan Hatch Wagon

Petrol: 1.6 litre (4A-FE, 3ZZ-FE)

1.8 litre (7A-FE, 1ZZ-FE)

2.0 litre (3S-FE)

2.0 litre (1AZ-FSE)

*Not the same Australian Avensis models. Does not cover Verso or Diesel*

ISBN: 978-1-84425-264-0

Book No: **4264**

**Camry SV11/SV20/SV21/SV22 1983-1992**

4 cyl: 2.0 litre SOHC 8v (2S-E)

2.0 litre DOHC 16v (3S-F)

2.0 litre DOHC 16v (3S-FE)

V6: 2.5 litre DOHC 24v (2VZ-FE)

ISBN: 978-1-56392-252-7

Book No: **92705**



**TOYOTA (CONTINUED)****Camry SDV10/VDV10 1993-1996**

4 cyl: 2.2 litre DOHC 16v (5S-FE)  
 V6: 3.0 litre DOHC 24v (3VZ-FE)  
 3.0 litre DOHC 24v (1MZ-FE)  
 ISBN: 978-1-56392-257-2

Book No: **92706****Camry SXV20/MCV20 1997-2002**

4 cyl: 2.2 litre (5S-FE)  
 V6: 3.0 litre V6 (1MZ-FE)  
 ISBN: 978-1-56392-715-7

Book No: **92707****Camry ACV36R/MCV36R 2002-2006**

4 cyl: 2.4 litre (2AZ-FE)  
 V6: 3.0 litre (1MZ-FE)  
 ISBN: 978-1-56392-704-1

Book No: **92708****Camry ACV40R/ASV50R 2006-2013**

2.4 litre (2AZ-FE)  
 2.5 litre (2AR-FE)  
 ISBN: 978-1-56392-944-1

Book No: **92709****Celica 1971-1985 (US)**

Rear wheel drive models  
 2.0 litre SOHC Carb (18R-C)  
 2.2 litre SOHC Cross-flow carb (20R)  
 2.4 litre SOHC Carb (22R)  
 2.4 litre SOHC EFI (22R-E)  
 ISBN: 978-1-56392-045-5

Book No: **92015****Celica 1986-1999 (US)**

Front wheel drive models  
 1.6 litre DOHC 16v EFI (4A-FE)  
 1.8 litre DOHC 16v EFI (7A-FE)  
 2.0 litre SOHC 8v EFI (2S-E)  
 2.0 litre DOHC 16v EFI (3S-FE)  
 2.2 litre DOHC 16v EFI (5S-FE)  
 2.0 litre DOHC 16v EFI (3S-GE)  
 Does not cover All-Trac 4WD  
 ISBN: 978-1-56392-397-5

Book No: **92020****Corolla 1200 1970-1978 (Gregory's)**

1166cc (4 cyl) (Petrol)  
 Sedan, wagon, coupe  
 ISBN: 0-85566-211-5

Book No: **04122****Corolla KE55 1978-1981 (Gregory's)**

1.3 litre (4 cyl) (Petrol)  
 Hardtop, wagon  
 ISBN: 0-85566-514-9

Book No: **04184****Corolla KE70 1981-1984**

RWD models  
 1300cc (4K-C)  
 ISBN: 978-1-56392-273-2

Book No: **92725****Corolla AE80/82/90/92 1985-1992**

Sedan, Hatchback  
 1.3 litre SOHC 8v (2A-C)  
 1.6 litre SOHC 8v (4A-C)  
 1.4 litre DOHC 16v (6A-F)  
 1.6 litre DOHC 16v (4A-F)  
 1.6 litre DOHC 16v (4A-FE)  
 1.6 litre DOHC 16v (4A-GE)  
 Does not cover 4WD information  
 ISBN: 978-1-56392-260-2

Book No: **92726****Corolla AE101/102 1993-1996**

Sedan, Hatchback  
 1.6 litre DOHC 16v (4A-FE)  
 1.8 litre DOHC 16v (7A-FE)  
 Does not cover 4WD  
 ISBN: 978-1-56392-254-1

Book No: **92727****Corolla AE101/102/112, ZZE122R 1997-2006**

1.6 litre DOHC 16v (4A-FE)  
 1.8 litre DOHC 16v (7A-FE)  
 1.8 litre DOHC 16v VVT (1ZZ-FE)  
 Does not cover information on Sportivo model or turbocharged engine  
 ISBN: 978-1-56392-668-6

Book No: **92728****Corolla ZRE152R/ZRE182R 2007-2015**

1.8 litre (2ZR-FE)  
 Sedan, hatchback  
 Does not cover 2.0 litre (3ZR-FE) engine  
 ISBN: 9 781620 92068-8

Book No: **92729****Corona XT130 1981-1983 (Gregory's)**

1.9 litre (4 cyl) (Petrol)  
 Sedan, wagon  
 ISBN: 0-85566-601-3

Book No: **04233****Corona ST141 1983-1987 (Gregory's)**

2.0 litre (4 cyl) (Petrol)  
 Sedan, wagon  
 ISBN: 0-85566-657-9

Book No: **04223****Echo, Yaris NCP10/12, NCP90/91/93 1999-2011**

1.3 litre DOHC 16v (2NZ-FE)  
 1.5 litre DOHC 16v (1NZ-FE)  
 ISBN: 978-1-62092-136-4

Book No: **92732****Hi Ace RH 1977-1983 (Gregory's)**

2.0 litre petrol (4 cyl) (Petrol)  
 Van, bus  
 ISBN: 0-85566-564-5

Book No: **04203****Hi Ace YH 1983-1989 (Gregory's)**

1.8 litre, 2.0 litre, 2.2 litre petrol (4 cyl) (Petrol)  
 Van, bus  
 ISBN: 0-85566-664-1

Book No: **04248****Hi Ace LH 1983-1989 (Gregory's)**

2.2 litre, 2.4 litre diesel (4 cyl) (Diesel)  
 Van, bus  
 ISBN: 0-85566-696-X

Book No: **04255****Hi-Lux, 4 Runner RN/YN/VZN Petrol 1979-1997**

2WD & 4WD  
 4 cyl: 1.6 litre OHV carb (1Y)  
 1.8 litre SOHC (2Y)  
 2.0 litre SOHC (3Y)  
 2.2 litre SOHC (4Y)  
 2.2 litre OHC EFI (4YE)  
 2.0 litre (18R)  
 2.2 litre (20R)  
 2.4 litre (22R)  
 V6: 3.0 litre SOHC (3VZ-FE)  
 ISBN: 978-1-56392-952-6

Book No: **92735****Hi-Lux & 4 Runner LN Diesel 1979-1997**

2WD & 4WD  
 2.2 litre (L)  
 2.4 litre (2L)  
 2.8 litre (3L)  
 ISBN: 978-1-56392-936-6

Book No: **92736****Hi-Lux 1997- 2005**

2WD & 4WD  
 Petrol: 2.0L 4cyl SOHC 8v (1RZ-E)  
 2.7L 4cyl DOHC 16V (3RZ-FE)  
 3.4L V6 DOHC 24v (5VZ-FE)  
 Diesel: 3.0L 4cyl SOHC 8v (5L)  
 3.0L 4cyl SOHC 8v (5L-E)  
 3.0L 4cyl SOHC 8v turbo (1KZ-TE)  
 ISBN: 978-1-56392-672-3

Book No: **92737****Hi-Lux TGN16, GGN15/25, KUN 16/26 2005-2015**

2WD & 4WD  
 Petrol: 2.7 litre 4 cyl (2TR-FE)  
 4.0 litre 6 cyl (1GR-FE)  
 Diesel 3.0 litre 4 cyl (1KD-FTV)  
 ISBN: 978-1-62092-179-1

Book No: **92738**



**Kluger MCU28R, GSU40R, GSU45R  
2003-2014**

Petrol: 3.3 (3MZ-FE)  
3.5 (2GR-FE)

ISBN: 978-1-62092-191-3

Book No: **92795**

**Land Cruiser FJ40/FJ45/FJ55/FJ60  
1975-1984 (Gregory's)**

4.2 litre petrol (2F) (6 cyl) (Petrol)  
Hardtop, wagon, utility, cab chassis, troop  
carrier

ISBN: 0-85566-642-0

Book No: **05511**

**Land Cruiser Petrol  
FJ60/FJ62/FJ70/FJ73/FJ75/FZJ75/  
FJ80/FZJ80 1980-1998**

Petrol: 4.2 litre 6cyl OHV carb (2F)  
4.0 litre 6cyl OHV EFI (3F)  
4.5 litre 6cyl DOHC 24v EFI (1FZ-FE)

ISBN: 978-1-56392-459-0

Book No: **92750**

**Land Cruiser Diesel HJ60/61/HZJ80/  
HDJ80 1980-1998**

Diesel: 4.0 litre 6cyl OHV (2H)  
4.0 litre 6cyl OHV turbo (12H-T)  
4.2 litre 6cyl SOHC 12v (1HZ)  
4.2 litre 6cyl SOHC 12v turbo (1HD-T)  
4.2 litre 6cyl SOHC 24v turbo (1HD-FT)

ISBN: 978-1-56392-372-2

Book No: **92751**

**Land Cruiser 78/79/100/105 1998-2007**

Wagon, Hardtop, Cab Chassis, Troop Carrier

Petrol: 4.5 litre 6 cyl (1FZ-FE)  
4.7 litre V8 (2UZ-FE)

Diesel: 4.2 litre 6cyl SOHC (1HZ)  
4.2 litre 6cyl SOHC turbo (1HD-FTE)

ISBN: 978-1-56392-882-6

Book No: **92752**

**Land Cruiser 76/78/79/200 2007-2016**

Wagon, Cab Chassis, Troop Carrier

Petrol: 4.7 litre V8 (2UZ-FE)  
4.6 litre V8 (1UR-FE)

Diesel: 4.5 litre V8 (1VD-FTV)

ISBN: 978-1-62092-069-5

Book No: **92753**

**Lexcen VN/VP/VR/VS/T4/T5  
1989-1996**

Sedan & Wagon

3.8 litre V6 OHV

Does not cover LPG engines

ISBN: 978-1-56392-633-4

Book No: **41742**

**MR2 1985-1987 (US)**

1.6 litre DOHC 16v (4A-GE)

ISBN: 978-1-85010-339-4

Book No: **92065**

**Prado 95/120 1996-2009**

Petrol: 2.7 litre 4 cylinder (3RZ-FE)  
3.4 litre V6 (5VZ-FE)  
4.0 litre V6 (1GR-FE)

Diesel: 3.0 litre (1KZ-TE, 1KD-FTV)

ISBN: 978-1-56392-821-5

Book No: **92760**

**Prius NHW11R/NHW20R  
2001-2008 (US)**

1.5 litre DOHC 16v (1NZ-FXE) with electric  
motor

ISBN: 978-1-56392-680-8

Book No: **92081**

**RAV4 SXA10/SXA11/ACA20R/  
ACA21R/ACA33/GSA33  
1994-2012**

2.0 litre (3S-FE, 1AZ-FE)  
2.4 litre (2AZ-FE)  
2.5 litre (2AR-FE)  
3.5 litre (2GR-FE)

ISBN: 978-1-62092-105-0

Book No: **92782**

**Supra 1979-1992 (US)**

2.6 litre SOHC (4M-E)  
2.8 litre SOHC (5M-E)  
2.8 litre DOHC (5M-GE)  
3.0 litre DOHC (7M-GE)  
3.0 litre DOHC turbo (7M-GTE)

ISBN: 978-1-56392-043-1

Book No: **92025**

**Tarago YR20/YR21/YR22 1983-1990**

(Gregory's)

1.8 litre, 2.0 litre, 2.2 litre (4 cyl) (Petrol)

Wagon

ISBN: 0-85566-721-4

Book No: **04241**

**Tarago 1991-1995 (US)**

Same as Previa in USA

2.4 litre DOHC 16v EFI (2TZ-FE)

Does not cover All Wheel Drive. Does not cover  
supercharged engines

ISBN: 978-1-56392-211-4

Book No: **92080**

**TR2, TR3, TR4 1952-1967 (UK)**

TR2, TR3, TR3A, TR4, TR4A

Petrol: 2.0 litre (1991cc), 2.1 litre (2138cc)

ISBN: 978-0-90055-028-7

Book No: **028**

**TR5, TR6 1967-1975 (UK)**

Petrol: 2.5 litre (2498cc)

ISBN: 978-0-90055-031-7

Book No: **031**

**TR7 1975-1982 (UK)**

Classis reprint

2.0 litre

ISBN: 978-0-85696-848-8

Book No: **322**

**Spitfire 1962-1981 (US)**

Mk I, II, III, IV, 1500

Petrol: 1.1 litre (1147cc), 1.3 litre (1296cc),  
1.5 litre (1493cc)

ISBN: 978-1-85010-022-5

Book No: **94007**

**Stag 1970-1978 (UK)**

Hardtop, Soft-top

3.0 litre V8 (2997cc)

ISBN: 978-0-85696-441-1

Book No: **441**

**TR7 1975-1981 (US)**

2.0 litre SOHC

ISBN: 978-0-85696-846-6

Book No: **94010**

**VOLKSWAGEN**

**Beetle 1954-1979 (US)**

Beetle, Super Bug, Karmann Ghia 1956-1975

Petrol: 1200cc, 1300cc, 1500cc, 1600cc

Engine codes: 1, 2, 3, 5, 6, 7, 8, 9, FO, HO,  
H5, B, AE, AH, AK, AF, AJ, AS

Does not cover diesel engines

ISBN: 978-1-85010-729-3

Book No: **96008**

**Beetle Petrol & Diesel 1999-2007 (UK)**

Petrol: 1.4 litre, 1.6 litre, 1.8 litre turbo, 2.0 litre

Diesel: 1.9 litre turbo

ISBN: 978-1-84425-760-7

Book No: **3798**

**Golf Mk1 1978-1984 (US)**

Diesel: 1.5 litre, 1.6 litre SOHC

ISBN: 978-0-85696-993-5

Book No: **96020**

**Golf, Jetta 1974-1984 (UK)**

Hatchback and Jetta Sedan (Mk 1)

Petrol: 1.1 litre (1093cc), 1.3 litre (1272cc)

Does not cover diesel models or 'Mk 2' range

ISBN: 978-1-85960-152-5

Book No: **716**

**TRIUMPH**

**TR2, TR3, TR4 1952-1967 (UK)**

TR2, TR3, TR3A, TR4, TR4A

Petrol: 2.0 litre (1991cc), 2.1 litre (2138cc)

ISBN: 978-0-90055-028-7

Book No: **028**

**VOLKSWAGEN (CONTINUED)**
**Golf 1975-1992 (US)**

Golf Hatchback Jetta Sedan, Rabbit  
 Petrol: 1.5 litre, 1.6 litre, 1.7 litre, 1.8 litre,  
 2.0 litre

ISBN: 978-1-56392-061-5

Book No: **96016**

**Golf, Jetta 1984-1992 (UK)**

Petrol: 1043cc (GN)  
 1272cc (HK)  
 1595cc (EZ, RF)  
 1781cc (GU, RH)  
 1781cc GTi (RP, EV, PB, PF)

Does not cover diesel, convertible, Rallye, Caddy  
 or 4WD models

ISBN: 978-1-85960-282-9

Book No: **1081**

**Golf, Vento 1992-1998 (UK)**

Hatchback, Wagon, Sedan  
 Petrol: 1.4 litre (1390, 1391 and 1398cc)  
 1.6 litre (1595 and 1598cc)  
 1.8 litre (1781cc)  
 2.0 litre (1984cc) 8v & 16v

Diesel: 1.9 litre (1896cc) inc. turbo

Does not cover 2.8 litre VR6 engine, Ecomatic or  
 4WD (Syncro) systems, or feature specific to  
 Cabriolet and van

ISBN: 978-1-85960-762-6

Book No: **3097**

**Golf, Bora 1998-2000 (UK)**

Hatch, Wagon, Sedan  
 Petrol: 1.4 litre (1390cc), 1.6 litre (1595cc), 1.8  
 litre (1781cc) and 2.0 litre (1984cc) incl turbo  
 Diesel: 1.9 litre (1896cc) inc. turbo

Does not cover 4-Motion (4x4), Cabriolet, 2.3 litre  
 V5 engine or 1.9 litre 'PD' engine

ISBN: 978-1-85960-727-5

Book No: **3727**

**Golf, Jetta 1993-1998 (US)**

Incl. GTi & Cabrio.  
 Petrol: 1.8 litre SOHC (ACC)  
 2.0 litre SOHC (ABA)  
 Diesel: 1.9 litre SOHC turbo (AAZ)

Does not cover 2.8 litre VR6 petrol engine

ISBN: 978-1-56392-433-0

Book No: **96017**

**Golf, Bora 2001- 2003 (UK)**

Hatch, Wagon, Bora Sedan  
 Petrol: 1.6 litre SOHC 8v (AEH, AKL)  
 1.6 litre SOHC 8 valve (roller rocker  
 fingers)(AVU, BFQ)  
 2.0 litre SOHC 8v (APK, AQY, AZH, AZJ)  
 1.4 litre DOHC (AHW, AXP, BCA)  
 1.6 litre DOHC (AZD, BCB)  
 1.8 litre DOHC 16v (AUM, AUQ)

Diesel: 1.9 litre SOHC 8v (AGP, AQM)  
 1.9 litre 8v Di Turbo (AGR, AHF, ALH, ASV)  
 1.9 litre Di Turbo (AJM, ARL, ASZ,  
 ATD, AUY, AXR)

Does not cover Cabrio model. Does not cover  
 2.3 litre V5 & 2.8 litre V6 (4WD) or 3.2 litre V6 R32

ISBN: 978-1-84425-169-8

Book No: **4169**

**Golf, Jetta 1999-2002 (US)**

Incl. GTi & Cabrio.  
 Petrol: 1.8 litre DOHC (AWD, AWW, AWP)  
 2.0 litre SOHC (AEG, APH, AZG)  
 Diesel: 1.9 litre SOHC turbo (ALH)

ISBN: 978-1-56392-475-0

Book No: **96018**

**Golf, Jetta 2004-2009 (UK)**

Petrol: 1.4 litre DOHC (BCA, BUD)  
 1.4 litre DOHC (BKG, BLN)  
 1.6 litre SOHC (BGU, BSE, BSF)  
 1.6 litre DOHC FSi (BAG, BLP, BLF)  
 2.0 litre DOHC (AXW, BLX, BLY, BLR,  
 BVX, BZY, BVZ)  
 2.0 litre DOHC turbo (AXX, BPY, BWA)

Diesel: 1.9 litre 8v SOHC turbo (BJB, BKC,  
 BRU, BLS, BXE, BXF)  
 2.0 litre SOHC 8v (BDK, BMM)  
 2.0 litre DOHC 16v turbo (AZV/BKD/BMN)

Does not cover 1.6 TDi engine

ISBN: 978-0-85733-976-8

Book No: **4610**

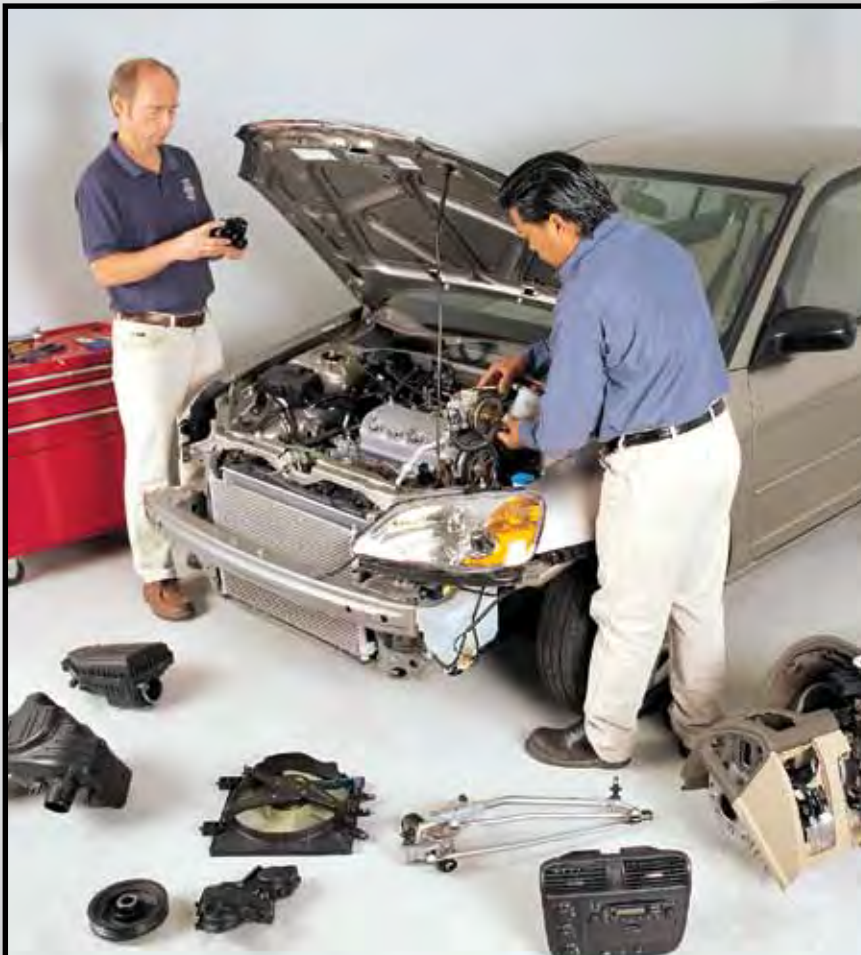
**Golf 2009-2012 (UK)**

Petrol: 1.4 litre  
 Diesel: 1.6 litre  
 2.0 litre

Does not cover 1.2, 1.6, 1.8 or 2.0 litre petrol  
 engines

ISBN: 978-0-85733-633-0

Book No: **5633**







**VOLVO**

**Passat 1988-1996 (UK)**

Sedan and Wagon  
 Petrol: 1.8 litre SOHC (1781cc)  
 2.0 litre SOHC (1984cc)  
 Diesel: 1.9 litre (1896cc).  
*Does not cover 1.6 Diesel engine, or 16-valve DOHC or 2.8 litre VR6 engines*  
 ISBN: 978-1-85960-498-4

Book No: **3498**

**Passat 1996-2000 (UK)**

Sedan and Wagon  
 Petrol: 1.6 litre (1595cc)  
 1.8 litre (1781cc) 4-cyl (inc. turbo).  
 Diesel: 1.9 litre (1896cc) 4-cyl  
*Does not cover V5 or V6 engines, Syncro/4-Motion*  
 ISBN: 978-1-85960-917-0

Book No: **3917**

**Passat 1996-2001 (US)**

4 Cyl: 1.8 litre DOHC (AEB, ATW)  
 V6: 2.8 litre SOHC 12v (AFC)  
 2.8 litre V6 DOHC 30v (AHA, ACK, ALG, APR, ATQ, AQD)  
*Does not cover diesel engine*  
 ISBN: 978-1-56392-703-4

Book No: **96023**

**Passat 2000-2005 (UK)**

Petrol: 1.8 litre (AWT)  
 2.0 litre SOHC (AZM)  
 2.0 litre DOHC (ALT)  
 Diesel: 1.9 litre (AVB, AVF, AWX)  
*Does not cover petrol V5, V6 or W8 engines or Diesel V6 or Tiptronic transmission or 4WD*  
 ISBN: 978-1-84425-279-4

Book No: **4279**

**Passat 2005-2010 (UK)**

Diesel: 1.9 litre (BKC, BLS, BXE)  
 2.0 litre (BKP/BMA/BMR/BUZ/BVE/BWV)  
*Does not cover petrol V5, V6 or W8 engines or Diesel V6 or Tiptronic transmission or 4WD*  
 ISBN: 978-1-84425-888-8

Book No: **4888**

**Polo 1994-1999 (UK)**

Petrol: 1.0 litre (AER, ALL, AEV)  
 1.3 litre (ADX)  
 1.4 litre (ADX, AEX, AKV, ANX, APQ)  
 1.6 litre (AEA, AEE)  
 Diesel: 1.7 litre (AHG, AKU)  
 1.9 litre (AEF, AGD)  
*Does not cover 1.4 litre 16 valve engine, sedan, wagon or Caddy*  
 ISBN: 978-1-85960-598-1

Book No: **3500**

**Polo 2000-2002 (UK)**

Petrol: 1.0 litre SOHC 8v (AUC, ALD)  
 1.4 litre SOHC 8v (AKP, AKK, ANW, AUD)  
 1.4 litre DOHC 16v (AHW, APE, AUA, AFH, AFK, AQQ, AUB)  
*Does not cover GTi, sedan, wagon or Caddy*  
 ISBN: 978-1-84425-150-6

Book No: **4150**

**Polo 2002-2005 (UK)**

Petrol: 1.2 litre (1198cc) 3 cyl (AWY, BMD)  
 1.4 litre (1390cc) 4 cyl (AZQ, BME)  
 Diesel: 1.4 litre (1422cc) 3 cyl  
 1.9 litre (1896cc) 4 cyl incl turbo  
*Does not cover 1.4 litre FSi petrol engine or Dune models*  
 ISBN: 978-1-84425-608-2

Book No: **4608**

**Transporter 1600 1968-1979 (UK)**

Petrol: 1.6 litre (1584cc)  
 ISBN: 978-0-85696-660-6

Book No: **082**

**Transporter 1600 1968-1979 (US)**

Petrol: 1.6 litre OHV Carb (B, AD, AE, AF, AS)  
 ISBN: 978-0-85696-614-9

Book No: **96030**

**Transporter 1700, 1800 & 2000 1972-1979 (US)**

ISBN: 0-85696-614-2

Book No: **96035**

**Transporter 1600 & 2000 1979-1982 (UK)**

Transporter with air cooled flat-four engines  
 Petrol: 1.6 litre (1584cc) and 2.0 litre (1970cc)  
*Does not cover alternative body or camper conversions produced by specialist manufacturers, water-cooled or diesel engines*  
 ISBN: 978-0-85696-638-5

Book No: **638**

**Transporter 1982-1990 (UK)**

Van, Pickup and Minibus (Caravelle) with water-cooled engines.  
 Petrol: 1.9 litre (1913cc) and 2.1 litre (2109cc)  
*Does not cover Diesel models, Syncro or features specific to specialist bodywork/camper conversions.*  
*For coverage of models with air-cooled engines, see Manual No. 0638*  
 ISBN: 978-1-85960-452-6

Book No: **3452**

**Type 3 1500 & 1600 1963-1973 (US)**

Fastback & Squareback  
 ISBN: 978-0-90055-084-3

Book No: **96040**

**120/130 Series 1961-1973 (US)**

Models 121, 122, 123GT, 131, 132, 133  
 Wagons 221, 222, 223.  
 Sports Coupe P1800, P1800S, P1800E, P1800ES.  
 Petrol: 1.8 litre 4cyl OHV (B18A, B18B), B  
 2.0 litre 4cyl OHV (20A, B20B, B20E, B20F).  
 Carburettor & Fuel injection  
 ISBN: 978-0-85696-203-5

Book No: **97010**

**140 Series 1966-1974 (UK)**

Sedan & Wagon  
 Petrol: 1.8 litre (1778cc) & 2.0 litre (1986cc)  
 ISBN: 978-0-85696-129-8

Book No: **129**

**240 Series 1974-1993 (UK)**

240, 242, 244 and 245  
 Petrol: 2.0 litre (1986cc), 2.1 litre (2127cc) and 2.3 litre (2316cc) OHC  
*Does not cover OHV engines or diesel engines*  
 ISBN: 978-1-85960-267-6

Book No: **270**

**260 Series 1975-1985 (UK)**

Sedan, Coupe & Wagon  
 Petrol: 2.7 litre (2664cc) & 2.8 litre (2849cc)  
 ISBN: 978-1-85010-206-9

Book No: **400**

**340 & 360 Series 1976-1991 (UK)**

340, 343, 345, 360. Sedan & Hatch  
 Petrol: 1.4 litre (1397cc) 1.7 litre (1721cc)  
 2.0 litre (1986cc)  
 ISBN: 978-1-85960-231-7

Book No: **715**

**440/460/480 1987-1997 (UK)**

Hatchback, Sedan and Coupe, incl turbo  
 Petrol: 1.6 litre (1596cc), 1.7 litre (1721cc), 1.8 litre (1794cc), 2.0 litre (1998cc)  
*Does not cover diesel models*  
 ISBN: 978-1-85960-565-3

Book No: **1691**

**740/760 Series 1982-1991 (UK)**

Sedan and Wagon, incl turbo models  
 Petrol: 2.0 litre (1986cc), 2.3 litre (2316cc) and 2.8 litre (2849cc)  
*Does not cover diesel models*  
 ISBN: 978-1-85960-081-8

Book No: **1258**

**VOLVO (CONTINUED)**
**850 Series 1992-1996 (UK)**

Sedan and Wagon, incl T5 versions

Petrol: 2.0 litre (1984cc), 2.3 litre (2319cc) 2.5 litre (2435cc)

*Does not cover diesel models*

ISBN: 978-1-85960-260-7

Book No: **3260**

**940 Series 1990-1998 (UK)**

Sedan and Wagon, inc. T5

Petrol: 2.0 litre (1986cc) and 2.3 litre (2316cc) 8-valve.

*Does not cover diesel models, or 16v (B204/B234) engines*

ISBN: 978-1-84425-739-3

Book No: **3249**

**S40, V40 1996-2004 (UK)**

S40 Sedan & V40 Wagon, inc. T4

Petrol: 1.6 litre (1588cc), 1.8 litre (1731, 1783 & 1834cc), 1.9 litre (1855cc) & 2.0 litre (1948cc), inc. GDI & Turbo.

*Does not cover diesel or bi-fuel models*

ISBN: 978-1-84425-076-9

Book No: **3569**

**S40, V50 2004-2007 (UK)**

Petrol: 1.8 litre (1798cc), 2.0 litre (1999cc), 2.4 litre (2435cc)

Diesel: 2.0 litre (1998cc)

*Does not cover 1.6 litre & 2.5 litre petrol, 1.6 litre & 2.4 litre diesel, T5 or AWD models*

ISBN: 978-1-64425-731-7

Book No: **4731**

**S40, V50 2007-2013 (UK)**

Diesel: 1.6 litre (1560cc)  
2.0 litre (1984cc, 1998cc)  
2.4 litre (2400cc)

*Does not cover 2.4 litre T9 engine or Powershift transmission*

ISBN: 978-0-85733-684-2

Book No: **5684**

**S60 2000-2008 (UK)**

Petrol: 2.0 litre (1984cc), 2.4 litre (2401cc, 2435cc), 2.5 litre (2521cc)

Diesel: 2.4 litre (2401cc), 2.5 litre

*Does not cover S60R, bi-fuel or AWD models*

ISBN: 978-1-84425-793-5

Book No: **4793**

**S70, C70, V70 1996-1999 (UK)**

Sedan, Wagon, Coupe incl. Turbo & T5 versions. 5 cylinder models only.

Petrol: 2.0 litre 10v (B5202S)  
2.0 litre 20v turbo & non turbo (B5204S & B5204T)  
2.3 litre 20v turbo & non turbo (B5234S & B5234T)  
2.5 litre 10v (5252S, B5242S)  
2.5 litre 20v (5254S, B5244S)  
2.5 20v turbo (B5254T, B5244T)

*Does not cover AWD, bi-fuel or diesel engines*

ISBN: 978-1-85960-573-6

Book No: **3573**

**V70, S80 1998-2007 (UK)**

V70 2000-2007  
S80 1998-2006

Sedan, Wagon  
5 cylinder models only

Petrol: 2.0 litre turbo (B5204T)  
2.3 litre turbo (B5234T)  
2.4 litre non turbo (B5244S)  
2.4 litre (B5244T)  
2.5 litre turbo (B5254T)

Diesel: 2.4 turbo (B5244T)

*Does not cover V70R, AWD or 6 cyl petrol engines*

ISBN: 978-1-84425-878-9

Book No: **4263**

**V70 2007-2012 (UK)**

Wagon

Diesel: 1.6 litre (D4164T) 4-cyl  
2.0 litre (D4204T2) 4-cyl  
2.0 litre (D5204T2) 5-cyl  
2.4 litre (D5244T4/T5/T10/T16/T19)

*Does not cover 2.4 litre twin-turbo diesel engine, petrol engines or FlexiFuel models*

ISBN: 9 780857 335579

Book No: **5557**

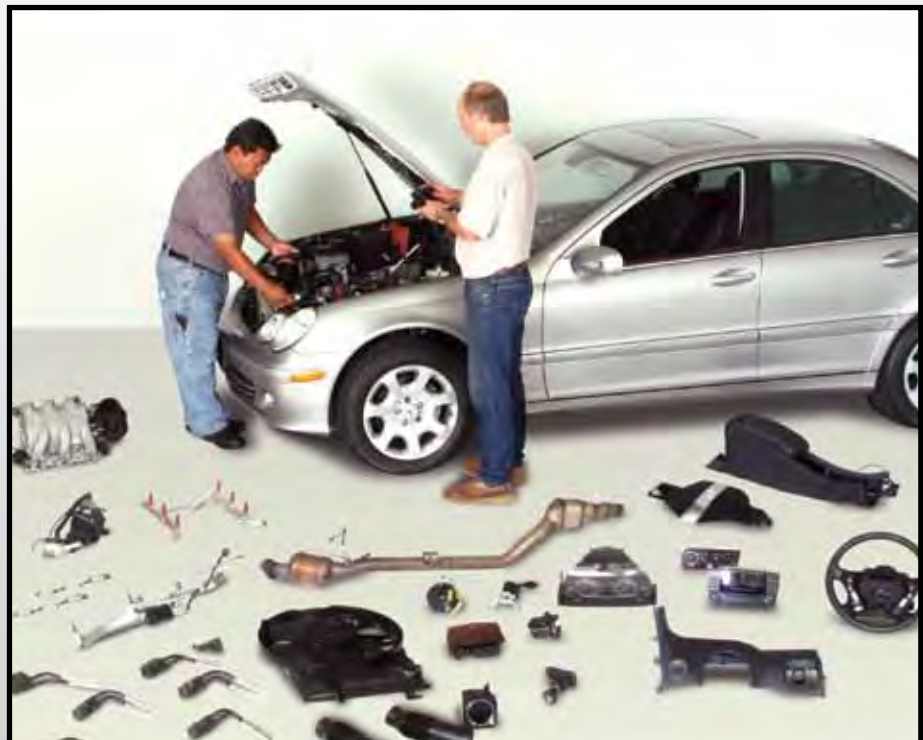
**XC60, XC90 2003-2012 (UK)**

Diesel: 2.0 litre (D5204T2/T3)  
2.4 litre (D5244T/T4/T5/T10/  
T11/T14/T15/T16/T18)

*Does not cover petrol engine*

ISBN: 9 780857 336309

Book No: **5630**





# Haynes Manuals online

## Yearly & lifetime subscriptions

### AUDI

**A4** 1.8 litre 4-cyl petrol, 2.8 litre V6 1996-01 (UK)  
E96023Y

### BMW

**3-Series** E36, 1.6, 1.8, 1.9 litre 4-cyl petrol,  
2.0 litre V6 1991-99 (UK)  
E3210Y

**3-Series** E46, 1.8, 1.9, 2.0 litre 4-cyl petrol,  
2.2, 2.5, 2.8, 3.0 litre V6 1998-06 (UK)  
E4067Y

**3-Series** E90, 2.0 4-cyl, 2.5, 3.0 litre V6 petrol,  
2.0, 3.0 litre diesel 2005-08 (UK)  
E4782Y

### CHRYSLER

**PT Cruiser** 2.0, 2.4 litre petrol 2001-10 (US)  
E25035Y

### CITROËN

**C5** 1.8, 2.0 litre petrol,  
1.6, 2.0 litre diesel 2001-08 (UK)  
E4745Y

### FORD

**Escape** ZA, ZB, 2.0, 2.3, 2.5 litre 4-cyl,  
3.0 litre V6 2001-12 (US)  
E36022Y

**Explorer** 4.0 litre V6, 5.0 litre V8 1991-01 (US)  
E36024Y

**Explorer** 4.0 litre V6, 4.8 litre V8 2002-10 (US)  
E36025Y

**F Series** - F-100, F-150, F-250, F-350, Bronco,  
3.9, 4.9 litre 6-cyl petrol, 5.0, 5.8, 6.6, 7.5 litre  
V8 petrol 1980-97 (US)  
E36058Y

**F Series** - F-250, F-350, 5.4 litre V8, 6.8 litre V10  
petrol, 6.0, 6.4, 7.3 litre V8 diesel 1999-10 (US)  
E36060Y

**Falcon/Fairlane** XD/XE/XF, ZJ/ZK/ZL,  
3.3, 4.1 litre 6-cyl 1979-87  
E36730Y

**Falcon/Fairlane/LTD** EA/EB/ED, NA/NC,  
DA/DC, 3.2, 3.9, 4.0 litre 6-cyl 1988-93  
E36731Y

**Falcon/Fairlane/LTD** EF/EL, NF/NL, DF/DL,  
4.0 litre 6-cyl 1994-98  
E36732Y

**Falcon/Fairlane/LTD** AU,  
4.0 litre 6-cyl 1998-02  
E36733Y

**Falcon** BA, BF, FG 4.0 litre 6-cyl 2002-14  
E36734Y

**Festiva** WA, WB, WD, 1.3 litre, 1.5 litre 1991-97  
E36736Y

**Fiesta** 1.2, 1.4, 1.6 litre petrol,  
1.4, 1.6 litre diesel 2008-11 (UK)  
E4907Y

**Fiesta** 1.25, 1.3, 1.4, 1.6 litre petrol,  
1.4, 1.6 litre diesel 2002-08 (UK)  
E4170Y

**Focus** LR, 1.4, 1.6, 1.8, 2.0 litre petrol,  
1.8 litre diesel 2001-05 (UK)  
E4167Y

**Focus** LS, LT, 1.6, 1.8, 2.0 litre petrol  
2005-09 (UK)  
E4785Y

**Ka** 1.3 litre 1996-02 (UK)  
E3570Y

**Laser** KA, KB, KC, KE, 1.1, 1.3 litre,  
1.5 litre, 1.6 litre 1981-89  
E36750Y

**Laser** KF, KH & KJ, 1.3, 1.5, 1.6 litre 1990-96  
E36751Y

**Maverick** DA, 3.0 & 4.2 litre petrol,  
4.2 litre diesel 1988-94  
E72760Y

**Mondeo** 2.0 litre petrol,  
1.8, 2.0 litre diesel 2007-12 (UK)  
E5548Y

**Territory** SX, SY, 4.0 litre 6-cyl 2004-11  
E36734Y

**Transit** 2.0, 2.4 litre diesel 2000-06 (UK)  
E4775Y

### HOLDEN

**Apollo** JK, JL, 2.0 litre 4-cyl 1989-93  
E92705Y

**Apollo** JM, JP, 2.2 litre 4-cyl, 3.0 litre V6 1993-96  
E92706Y

**Astra** TS, 1.8, 2.2 litre 1998-05  
E41710Y

**Astra** 1.3, 1.7, 1.9 litre diesel 2004-08 (UK)  
E4733Y

**Astra** 1.4, 1.6, 1.8 litre petrol 2004-08 (UK)  
E4732Y

**Barina** MB, ML, MF, MH, 1.3 litre 1985-93  
E41725Y

**Barina** SB, 1.2, 1.4, 1.6 litre 1994-97  
E41726Y

**Barina** (Corsa) SB, 1.0, 1.4, 1.6 litre  
1997-00 (UK)  
E3921Y

**Barina** (Corsa) 1.0, 1.2, 1.4 litre petrol,  
1.3 litre diesel 2003-06 (UK)  
E4617Y

**Commodore** VB, VC, VH, VK,  
2.8, 3.3 litre 6-cyl 1978-85  
E41740Y

**Commodore** VL, 3.0 litre, 3.0 litre turbo 6-cyl  
1986-88  
E41741Y

**Commodore** VN, VP, VQ, VR, VS, 3.8 litre V6,  
5.0 litre V8 1988-96  
E41742Y

**Commodore** VT, VX, VY, VZ, 3.6, 3.8 litre V6,  
5.0, 5.7, 6.0 litre V8 1997-06  
E41743Y

**Commodore** VE, 3.0, 3.6 litre V6  
6.0 litre, 6.2 litre V8 2006-12  
Not covered: LPG  
E41744Y

**Jackaroo** UBS, 3.2 litre 1991-97  
E41753Y

**Nova** LE, LF, 1.3, 1.4, 1.6 litre 1985-92  
E92726Y

**Nova** LG, 1.6 litre, 1.8 litre 1994-97  
E92727Y

**Rodeo** TF, 2.3, 2.6 litre petrol 1991-02  
E41753Y

**Vectra** 1.6, 1.8, 2.0 litre 4-cyl petrol,  
2.0, 2.2 litre diesel 1999-02 (UK)  
Not covered: 2.2 litre (C22SEL) petrol engine  
E3930Y

**Vectra** 1.8, 2.2 litre 4-cyl petrol,  
1.9, 2.0, 2.2 litre diesel 2002-06 (UK)  
E4618Y

**Zafira** TT, 2.2 litre petrol 2001-05  
E41710Y





### HONDA

- Accord** 2.2 litre 4-cyl, 2.7 litre V6 1994-97 (US) E42013Y
- Civic** 1.6, 1.8, 2.0 litre petrol 1996-00 (US) E42025Y
- Civic** 1.7, 2.0, 2.4 litre petrol 2001-10 (US) E42026Y  
Not covered: Hybrid models
- Civic** 1.8, 2.4 litre petrol 2012-15 (US) E42027Y
- CR-V** 1.6, 1.8, 2.0 litre petrol 1994-00 (US) E42025Y
- CR-V** 1.7, 2.0, 2.4 litre petrol 2002-09 (US) E42026Y
- CR-V** 1.8, 2.4 litre petrol 2012-16 (US) E42027Y
- Integra** 1.6, 1.8, 2.0 litre petrol 1997-01 (US) E42025Y

### HYUNDAI

- Elantra** 1.8, 2.0 litre 1996-10 (US) E43010Y
- Excel** 1.5 litre 4-cyl 1986-00 (US) E43725Y
- Santa Fe** 2.4 litre 4-cyl, petrol 2.7, 3.5 litre V6 petrol 2001-06 (US) E43050Y
- Sonata** 2.4 litre 4-cyl, 2.5, 2.7, 3.3 litre V6 petrol 1999-08 (US) E43055Y

### JEEP

- Cherokee** 2.5 litre 4-cyl, 2.8 litre V6 petrol, 4.0 litre 6-cyl petrol 1984-01 (US) E50010Y
- Cherokee** (Liberty) 2.4 litre 4-cyl, petrol 3.7 litre V6 petrol 2002-07 (US) E50035Y
- Grand Cherokee** 4.0 litre 6-cyl petrol, 4.7, 5.2, 5.9 litre V8 petrol 1993-05 (US) E50025Y

- Grand Cherokee** 4.0 litre V6, petrol 4.7, 5.7, 6.1 litre V8 petrol 2005-10 (US) E50026Y

- Wrangler** 2.4, 2.5 litre 4-cyl, 3.8 litre V6, petrol 4.0, 4.2 litre 6-cyl petrol 1987-11 (US) E50030Y

### LAND ROVER

- Defender** 90/110, 2.3, 2.5 litre diesel 1983-07 (UK) E3017Y
- Discovery** 3.5 litre petrol, 2.5 litre diesel 1989-98 (UK) E3016Y
- Discovery** Series 2, 2.5 litre diesel 1999-04 (UK) E4606Y
- Freelander** 1.8 litre petrol 4-cyl, 2.0 litre diesel 1997-03 (UK) E3929Y

### MAZDA

- 121** Front wheel drive models, 1.3, 1.5 litre 1987-90 E36736Y
- 323** Front wheel drive models, 1.1, 1.3, 1.5, 1.6 litre 1981-89 E36750Y
- 323** Astina, Protege, 1.3, 1.5, 1.6 litre 4-cyl 1990-96 E36751Y
- Mazda3** BK, BL, 2.0, 2.3, 2.5 litre petrol 2004-12 E61712Y
- Mazda6** GG/GY, GH, 2.3 litre, 2.5 litre 4-cyl petrol, 3.0, 3.7 litre V6 petrol 2002-12 E61743Y
- Tribute** 2.0, 2.3, 2.5 litre 4-cyl, 3.0 litre V6 petrol 2001-12 E36022Y

### MERCEDES-BENZ

- A Class** W168, 1.4, 1.6, 1.9, 2.1 litre petrol, 1.7 litre diesel 1998-04 (UK) E4748Y

- C Class** W202, 1.8, 2.0, 2.2, 2.3 litre 4-cyl petrol, 2.2, 2.5 litre diesel 4-cyl 1993-00 (UK) E3511Y

- C Class** W203, 1.8, 2.0, 2.3 litre petrol, 2.2 litre 4-cyl, 2.7 litre 5-cyl diesel 2000-07 (UK) E4780Y

- Sprinter** 2.1 litre 4-cyl, 2.5 litre 5-cyl diesel 1995-06 (UK) E4902Y

### MINI

- Mini** 0.9, 1.0, 1.1, 1.3 litre 1969-01 (UK) E646YLifetime - E646L

### MITSUBISHI

- Lancer** CB, CC, 1.3, 1.5, 1.6, 1.8 litre 1990-96 E68750Y
- Lancer** CE, CG, CH, 1.5, 1.8, 2.0, 2.4 litre 1996-07 E68751Y
- Magna** TR, TS, 2.6 litre 4-cyl, 3.0 litre V6 1991-96 E68756Y

- Magna/Verada**, TE/TF/TH/TJ/TL/TW, KE/KF/KH/KJ/KL/KW, 3.0 litre, 3.5 litre V6 1996-05 Not covered: 2.4 litre 4-cyl petrol E68757Y

- Pajero** NA/NB/NC/ND/NE/NF/NG/NH/NJ/NK, 2.6 litre 4-cyl petrol, 3.0, 3.5 litre V6 petrol, 2.5, 2.8 litre diesel 1983-97 E68765Y

- Pajero** NL, NM, NP, NS, NT, 3.0, 3.5, 3.8 litre V6 petrol, 2.8, 3.2 litre diesel 1997-09 E68766Y

### NISSAN

- Maxima** 3.0, 3.5 litre V6 1993-04 (US) Not covered: 3.0 litre DOHC (VG30DE) V6 E72021Y

- Navara** D21, 2.0, 2.4 litre 4-cyl, 3.0 litre V6 petrol 1986-96 E72730Y

- Navara** D22, 2.4 litre 4-cyl, 3.3, 3.5 litre V6 petrol 1997-05 (US) E72031Y

- Pathfinder** 2.0 litre, 2.4 litre 4-cyl, 3.0 litre V6 petrol 1987-95 E72730Y

- Pathfinder** 2.4 litre 4-cyl, 3.3, 3.5 litre V6 petrol 1995-05 (US) E72031Y

- Patrol** GQ, 3.0 litre 4-cyl, 4.2 litre 6-cyl petrol, 4.2 litre diesel 6-cyl 1988-97 Not covered: 2.8 litre 4-cyl diesel turbo E72760Y





**Patrol** GU, 4.5, 4.8 litre petrol,  
2.8, 3.0, 4.2 litre diesel 1998-14

E72761Y

**Pulsar** N14, 1.6, 2.0 litre 1991-95

E72772Y

**Pulsar** N15, 1.6 litre 1995-00  
Not covered: 2.0 litre SSS model

E72773Y

**Pulsar** N16, 1.6, 1.8 litre 2000-05

E72774Y

## PEUGEOT

**206** 1.1, 1.4, 1.6, 2.0 litre petrol,  
1.4, 2.0 litre diesel 2001-06 (UK)  
Not covered: 1.6 litre 16V petrol

E4613Y

**306** 1.1, 1.4, 1.6, 1.8, 2.0 litre petrol,  
1.8, 1.9, 2.0 litre diesel 1993-02 (UK)  
Not covered: Cabriolet & Roadster models

E3073Y

**307** 1.4, 1.6, 2.0 litre petrol,  
1.4, 2.0 litre diesel 2001-08 (UK)

E4147Y

**407** 1.6, 2.0 litre diesel 2004-11 (UK)

E5550Y

## ROVER

**75/MG ZT** 1.8 litre 4-cyl, 2.0, 2.5 litre V6 petrol,  
2.0 litre diesel 1999-06 (UK)

E4292Y

## SAAB

**9-3** 2.0, 2.3 litre petrol including turbo,  
2.2 litre diesel 1998-02 (UK)

E4614Y

**9-3** 2.0 litre petrol, 1.9 litre diesel 2002-07 (UK)

E4749Y

## SUBARU

**Impreza** 2.2, 2.5 litre 2002-11  
WRX 2.5 litre 2002-14  
WRX STI 2.5 litre 2004-14

E89780Y

**Liberty/Outback** 2.2, 2.5 litre 1989-98

E89706Y

**Liberty/Forester** 2.5 litre 1998-06 (US)

E89101Y

## SUZUKI

**Swift** SF, 1.3 litre 1985-93  
Not covered: EFI models

E41725Y

## TOYOTA

**Aurion** GSV40R, GSV50R, 3.5 litre V6 2006-13

E92709Y

**Avalon** MCX10, 3.0 litre 2000-06

E92708Y

**Camry** SV11, SV21, SV22, 2.0 litre 4-cyl,  
3.0 litre V6 1983-92

E92705Y

**Camry** SDV10, VDV10, 2.2 litre 4-cyl,  
3.0 litre V6 1993-96

E92706Y

**Camry** SXV20, MCV20, 2.2 litre 4-cyl,  
3.0 litre V6 1997-02

E92707Y

**Camry** ACV36R, MCV36R, 2.4 litre 4-cyl,  
3.0 litre V6 2002-06

E92708Y

**Camry** ACV40R, ASV50R,  
2.4 litre, 2.5 litre 4-cyl 2006-13

E92709Y

**Corolla** AE80, AE82, AE90, AE92,  
1.3, 1.4, 1.6 litre 1985-92

E92726Y

**Corolla** AE101, AE102, 1.6 litre, 1.8 litre 1993-96

E92727Y

**Corolla** AE101, AE102, AE112, ZZE122,  
1.6 litre, 1.8 litre 1997-06  
Not covered: Sportivo turbo models

E92728Y

**Corolla** ZRE-152, ZRE-182,  
1.8 litre (2ZR-FE) 2007-15  
Not covered: 2.0 litre (3ZR-FE)

E92729Y

**Echo/Yaris** NCP10/12, NCP90/91/93,  
1.3, 1.5 litre 1999-09

E92732Y

**Hi-Lux** 2WD & 4WD/4 Runner, LN,  
2.2, 2.4, 2.8 litre diesel 1979-97

E92736Y

**Hi-Lux** 2WD & 4WD/4 Runner, RN, YN, VZN,  
1.6, 1.8, 2.0, 2.2, 2.4 litre 4-cyl petrol,  
3.0 litre V6 petrol 1979-97

E92735Y

**Hi-Lux** 2WD & 4WD, RZN, VZN, LN, KZN,  
2.0, 2.7 4-cyl, 3.4 litre V6 petrol,  
3.0 litre diesel 1997-05

E92737Y

**Hi-Lux** 2WD & 4WD, TGN16, GGN15, GGN25,  
KUN16, KUN26, 2.7 litre 4-cyl, 4.0 litre V6  
petrol, 3.0 diesel turbo 2005-15

E92738Y

**Land Cruiser** FJ60, FJ62, FJ70, FJ73, FJ75,  
FJ80, FZJ80,  
4.0, 4.2, 4.5 litre petrol 1980-98

E92750Y

**Land Cruiser** HJ60, HJ61, HJ70, HJ75, HZJ80,  
HDJ80, 4.0, 4.2 litre diesel 1980-98

E92751Y

**Land Cruiser** 78, 79, 100, 105, 4.5 litre 6-cyl,  
4.7 litre V8 petrol, 4.2 litre diesel 1998-07

E92752Y

**Land Cruiser** 76, 78, 79, 200, 4.6 litre & 4.7  
litre petrol, 4.5 litre diesel 2007-16

E92753Y

**Lexcen** VN, VP, VR, VS, 3.8 litre (V6) 1989-97

E41742Y

**Prado** 95, 120, 2.7 litre 4-cyl petrol,  
3.4, 4.0 litre V6 petrol,  
3.0 litre diesel 1996-09

E92760Y

**RAV4** 2.0, 2.4, 2.5 litre 4-cyl petrol,  
3.5 litre V6 petrol 1994-12

E92782Y

## VOLKSWAGEN

**Golf/Bora** 1.4, 1.6, 1.8 litre petrol,  
1.9 litre diesel 1998-00 (UK)

E3727Y

**Golf/Bora** 1.4, 1.6, 1.8, 2.0 litre petrol,  
1.9 litre diesel 2001-03 (UK)  
Not covered: 4WD & Cabriolet models

E4169Y

**Golf/Jetta** 1.4, 1.6, 2.0 litre petrol,  
1.9, 2.0 litre diesel 2004-07 (UK)

E4610Y

**Passat** 1.8 litre 4-cyl, 2.8 litre V6 petrol  
1998-05 (US)

E96023Y

## VOLVO

**S40/V40** 1.6, 1.8, 1.9, 2.0, 2.3 petrol  
1996-04 (UK)

E3569Y



**TECHBOOK SERIES**

**4WD Mechanic (Gregory's)**

4WD Mechanic provides a wealth of information on the workings of the modern off-road vehicle, together with trouble shooting, service, repair and testing procedures for most vehicle components. Written in an easy to follow format, 4WD Mechanic has over 900 photos and illustrations covering many different makes & models. Both petrol & Diesel engines are covered.

ISBN: 0-85566-730-3

Book No: **07428**

**ACL Engine Manual (Gregory's)**

A completely revised update of the original highly regarded Repco Engine Service Manual, written by senior technical engineers of Automotive Components Limited.

Comprehensive coverage includes current reconditioning and rebuilding practice, fault diagnosis and the design, manufacture and testing of principle replacement engine componentry. Hundreds up to date and informative illustrations are used to simplify the text material. Engineers, students, engine reconditioners, mechanics and all those interested in engines will find this invaluable.

ISBN: 0-85566-680-3

Book No: **07413**



**ATV Basics**

A guide to maintaining, buying and riding ATVs. Includes tips on finding the right ATV for you, how to select trailers, plows and other accessories, and how to operate your ATV safely.

ISBN: 978-1-56392-1476

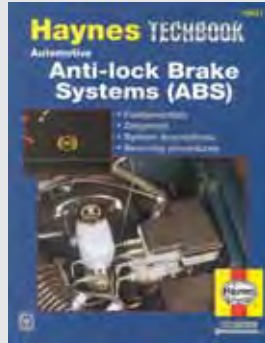
Book No: **10450**

**Automotive Anti-lock Brake Systems**

(ABS) Manual - Covers most anti-lock braking systems in current use. Includes ABS theory, troubleshooting and a thorough description of how each system works. In-depth descriptions of Bendix, Bosch, Delphi Chassis (Delco Moraine), Kelsey-Hayes (Lucas Varity), Nippondenso, Nissin, Sumitomo, Teves and Toyota systems.

ISBN: 1-56392-349-1

Book No: **10411**



**Automotive Bodywork Repair Manual**

A complete photographic guide showing car care and detailing, rust prevention as well as body repair and painting - from minor dents to major structural damage.

ISBN: 978-1-85010-479-7

Book No: **10405**



**Automotive Brake Manual**

Covers principles of operation, troubleshooting, maintenance and repair of the modern braking system. Over 500 illustrations.

ISBN: 1-56392-112-X

Book No: **10410**

**Automotive Detailing Manual**

Covers cleaning, waxing and repair of minor damage to the body, interior, engine compartment and wheels. Many professional tips. Full color throughout with over 350 photographs.

ISBN: 978-1-56392-113-1

Book No: **10415**



**Automotive Electrical Manual**

Covers basic electrical fundamentals, troubleshooting and repair for both domestic and foreign vehicles. Includes engine starting and charging systems, lights, gauges and accessories.

ISBN: 978-1-85010-654-8

Book No: **10420**

**Automotive Electrics and Electronics (Gregory's)**

Provides the reader with an understanding of the fundamentals of the various electrical and electronic systems and componentry used in the modern car.

Commencing with simple electron theory, the book progresses to cover principles of operation, construction details and service procedures for the various automotive systems.

Bridging the gap between the most elementary and the more advanced publications on this subject, this book will help to make this intricate subject easier to understand.

ISBN: 0-85566-669-2

Book No: **07415**







**Automotive Emission**

Control Manual - A simple, do-it-yourself approach to automotive emissions controls. Basic information, diagnosis and repair for all Domestic & Import models, including computer-controlled vehicles.

ISBN: 978-1-56392-234-3

Book No: **10210**

**Automotive Heating & Air Conditioning Manual**

Covers theory and operation of all domestic and import automotive heating and air conditioning systems in use today. Step-by-step procedures are provided for diagnosis, maintenance and repair. Now includes expanded R134a information.

ISBN: 978-1-56392-784-3

Book No: **10425**

**Automotive Mechanics Fundamentals (Gregory's)**

This book is used by year one Automotive Mechanics students in Australia and New Zealand. It covers the fundamentals of design, construction and operation of modern automotive systems and units.

The text is complemented by hundreds of up to date and informative illustrations. This book can also be a valuable guide to car owners or anyone interested in the fundamental workings of the modern motor car.

ISBN: 0-85566-626-9

Book No: **07407**



**Automotive Reference Manual & Illustrated Dictionary**

Includes a comprehensive dictionary (many words are illustrated), how to decode Vehicle Identification Numbers (VINs), useful automotive maths, and tool and fastener guides. Basic information for all car owners and drivers.

ISBN: 978-1-56392-109-4

Book No: **10430**

**Automotive Tools Manual**

A guide to buying and using automotive tools. Covers common hand tools and power tools, including specialized tools, meters and precision measuring tools. Information on selecting tools, using tools and setting up a workshop. Over 500 tools illustrated and in use.

ISBN: 1-56392-107-3

Book No: **10435**

**Automotive Wiring Diagrams (Gregory's)**

The Automotive Wiring Diagrams series contains comprehensive wiring diagrams for all popular vehicle models on the Australian market, and is essential information for auto electricians and mechanics.

**Volume 1**

Covers late 1970's to early 1990's models

ISBN: 0-85566-731-1

Book No: **07429**

**Volume 2**

Covers late 1980's to late 1990's models

ISBN: 0-85566-769-9

Book No: **07430**

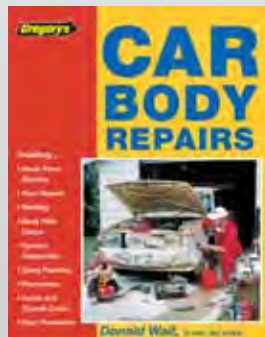


**Car Body Repairs (Gregory's)**

This manual deals with many aspects of body maintenance and elementary panel repairs. Written in an easy-to-follow and well illustrated format, the book contains sections explaining panel beating, paint refinishing, rust repairs, plastic body filler, vehicle maintenance, rust prevention, welding and repair of plastic parts

ISBN: 0-85566-733-8

Book No: **07401**



**Chevrolet Engine Overhaul Manual**

Complete step-by-step procedures lead the reader from engine removal through the entire rebuild process. Hundreds of hands-on photographs make it easy to follow. Covers 262, 265, 267, 283, 302, 305, 307, 327, 350, 396, 400, 402, 427, & 454 cu in V8 engines.

ISBN: 978-1-85010-762-0

Book No: **10305**

**Chrysler Engine Overhaul Manual**

Covers small-block (LA Series) V8 engines from 1964 through 1994, and big-block (B and RB) V8 engines from 1958 through 1978. Also covers the 3.9L V6 engine. Includes modifications and parts interchange information.

ISBN: 978-1-56392-114-8

Book No: **10310**

**EFI & Engine Management (Gregory's)**

Containing specifications and test procedures on electronic fuel injection and engine management systems for all popular vehicles on the Australian market.

Comprehensive wiring diagrams are provided in an easy-to-read format. All procedures described in the manuals have been verified at our research centre and can be performed using test equipment found in most workshops.

**Volume 1**

Covers 1980's models

ISBN: 0-85566-672-2

Book No: **07451**

**Volume 2**

Covers early 1990's models

ISBN: 0-85566-698-6

Book No: **07452**

**Volume 3**

Covers mid 1990's models

ISBN: 0-85566-753-2

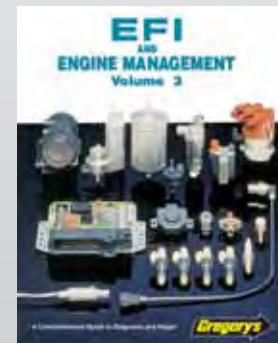
Book No: **07453**

**Volume 4**

Covers mid to late 1990's models

ISBN: 0-85566-776-1

Book No: **07454**





### Ford Automatic Transmission Overhaul Manual

In-depth coverage of popular Ford transmissions with complete overhaul photo sequences. Also covered are theory of operation, in-vehicle repairs and modifications. Covers C3, C4, C5, C6 & AOD transmissions, and ATX/FLC & AXOD transaxles.

ISBN: 978-1-56392-424-8

Book No: **10355**



### Ford Engine Overhaul Manual

Written to the same style as the Chevrolet manual described above. Covers 255, 260, 289, 302, 351, 360, 390, 400, 428, 429 & 460 cu in V8 engines.

ISBN: 1-85010-763-7

Book No: **10320**

### GM & Ford Diesel Engine Repair

As fitted to light trucks, vans & passenger cars. Covers routine maintenance, repairs, overhaul, cooling system, fuel system and electrical system.

GM: 350ci (5.7 litre)  
379ci (6.2 litre)  
397ci (6.5 litre)

Ford: 420ci (6.9 litre)  
445ci (7.3 litre)  
445ci (7.3 litre) Powerstroke

ISBN: 978-1-56392-188-9

Book No: **10330**



### GM, Ford and Chrysler Engine Performance

Everything you need to know to put more muscle under your hood! Project planning and choosing a speed shop; fuel, exhaust and ignition system modifications; induction systems, cylinder head mods and camshafts to make your engine breathe better; turbocharging, supercharging and nitrous oxide; building the bottom end to last; aftermarket gauge installation; computer chips to crate motors.

ISBN: 978-1-56392-693-8

Book No: **10333**

### GM Automatic Transmission

Overhaul Manual - Written to the same style as the Ford manual described above. Covers THM 200-4R, THM350, THM400 & THM700-R4 and THM 125/125C, THM3T40, THM440-T4 & THM4T60 transaxles.

ISBN: 978-1-56392-423-1

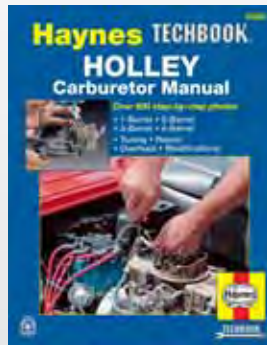
Book No: **10360**

### Holley Carburettor Manual

Covering models from the mid-1960's through the late 1980's. Includes one, two, three and four barrel carburetors. Complete photo sequence overhaul chapters along with chapters explaining design, operation, modification, troubleshooting and tuning.

ISBN: 978-1-56392-069-1

Book No: **10225**



### Inside Your Car (Gregory's)

This book is an easy guide to car maintenance, assisting the owner in understanding their car, maintaining it in good condition and locating problems which may occur.

Written in simple terminology and with many illustrations, there is something for every car owner or driver, whether beginner or long term motorist.

ISBN: 0-85566-665-X

Book No: **07414**

### Motor Vehicle Log Book (Gregory's)

Gregory's Motor Vehicle Log Book is specifically designed to assist the owner/driver in keeping a permanent record of the day to day running costs of their vehicles.

ISBN: 0-85566-580-7

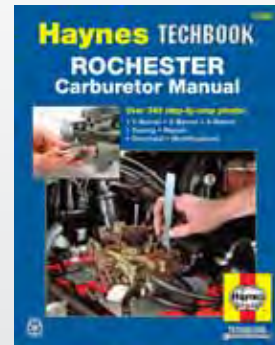
Book No: **01417**

### Rochester Carburettor Manual

Covers all electronic and computer-command-control (CCC) carburetors as well as all earlier conventional models from the mid-1960's through the late 1980's. Complete photo sequence overhaul chapters cover Monojet, Dualjet, Varajet and Quadrajets as well as 2G and 4G carburetors.

ISBN: 978-1-56392-068-4

Book No: **10230**



### Home Mechanic (Gregory's)

Home Mechanic enlightens the car owner in the basic workings of the modern automobile and provides a generalised repair and testing procedures for the majority of the vehicle's components.

The repair methods, although generalised to cover may different makes & models of motor vehicles, have been proved in practice over the years in our research centre.

ISBN: 0-85566-651-X

Book No: **07405**

### Rover Mowers (Gregory's)

This manual covers Rover mowers powered by the Suzuki 2 stroke engine and the Briggs & Stratton 4 stroke engines to 1992

The relevant chassis assembled are also comprehensively covered and include the chain and belt self-propelled types.

ISBN: 0-85566-691-9

Book No: **07422**





**Small Engines – Series 2 (Gregory's)**

- Briggs & Stratton 4 Stroke
  - Honda GX110 GX140 Horizontal Shaft
  - Honda GXV120 GXV160 Vertical Shaft
  - McCulloch Mac 60/80 Eager Beaver Brush Cutters
  - McCulloch 160S Eager Beaver Chain Saws
  - Stihl 009 010 011 2 Stroke
  - Stihl FS81 FS86 2 Stroke
  - Suzuki 2 Stroke
  - Victa Power Torque 2 Stroke
- ISBN: 0-85566-701-X

Book No: **07426**



**Small Engine Repair Manual, 5.5 thru 20 Horsepower**

Maintenance, tuning, single and twin-cylinder engines typically used in lawn tractors, generators, rototillers, snow blowers, log splitters and industrial equipment.

Briggs & Stratton L-head & OHV Vanguard  
 Tecumseh/Craftsman L-head & OHV  
 Kohler K series  
 Magnum  
 Command  
 Honda OHV single cylinder & V-twin  
 Robin/Wisconsin Robin L-head & OHV

ISBN: 1-56392-298-3

Book No: **10341**



**Suspension, Steering & Driveline Manual**

Covers troubleshooting, maintenance and repair procedures for most foreign and domestic suspension, steering and driveline systems. Includes rear differential overhaul procedures and modifications for improving your vehicle's handling.

ISBN: 978-1-56392-293-0

Book No: **10345**



**Small Engine Repair Manual, 5 Horsepower and Less**

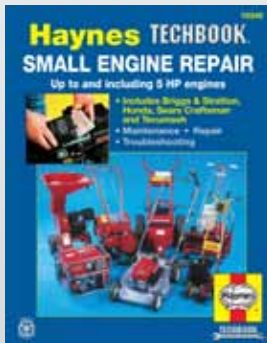
Covers maintenance, troubleshooting and repair procedures for popular small engines used on mowers, garden tillers, generators, pumps and similar equipment.

Briggs & Stratton side-valve 4 stroke  
 Tecumseh side-valve 2 & 4 stroke  
 Sears Craftsman side-valve 2 & 4 stroke  
 Honda 4 stroke (GV150, GX110, GX140, GXV120, GXV160)

Does not cover small hand-held engines used on weed-eaters, blowers, etc.

ISBN: 1-85010-666-5

Book No: **10340**



**Spray Painting (Gregory's)**

Spray Painting is a step-by-step guide to assist the home handyman, hobbyist car restorer or apprentice who undertakes spray painting work. This book is presented in two parts – Part 1 Automotive Spray Painting, which deals with the various aspects of painting vehicles, and Part 2 Domestic Spray Painting, which covers general painting around the home.

0-85566-692-7

Book No: **07419**



**Weber/Zenith Stromberg/SU Carburettor Manual**

Covers most Weber carburetors ranging from the DGV series to the DCOE and IDF series. Part three covers the complete line of Stromberg CD carburetors from the 1960s to 1970s. Part four includes SU carburetors Type H, HD and HIF through 1988. Illustrated with complete photo sequences and component explanation chapters.

ISBN: 978-1-56392-157-5

Book No: **10240**

**Welding Manual**

Covers gas (oxy-acetylene), arc, MIG and TIG welding. Soldering and flame cutting are also covered. Techniques are discussed as they relate to automotive and workshop repairs. Information on selecting equipment is also included.

ISBN: 978-1-84425-176-6

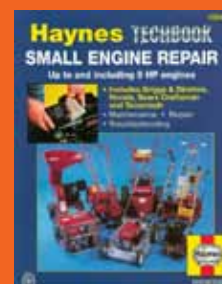
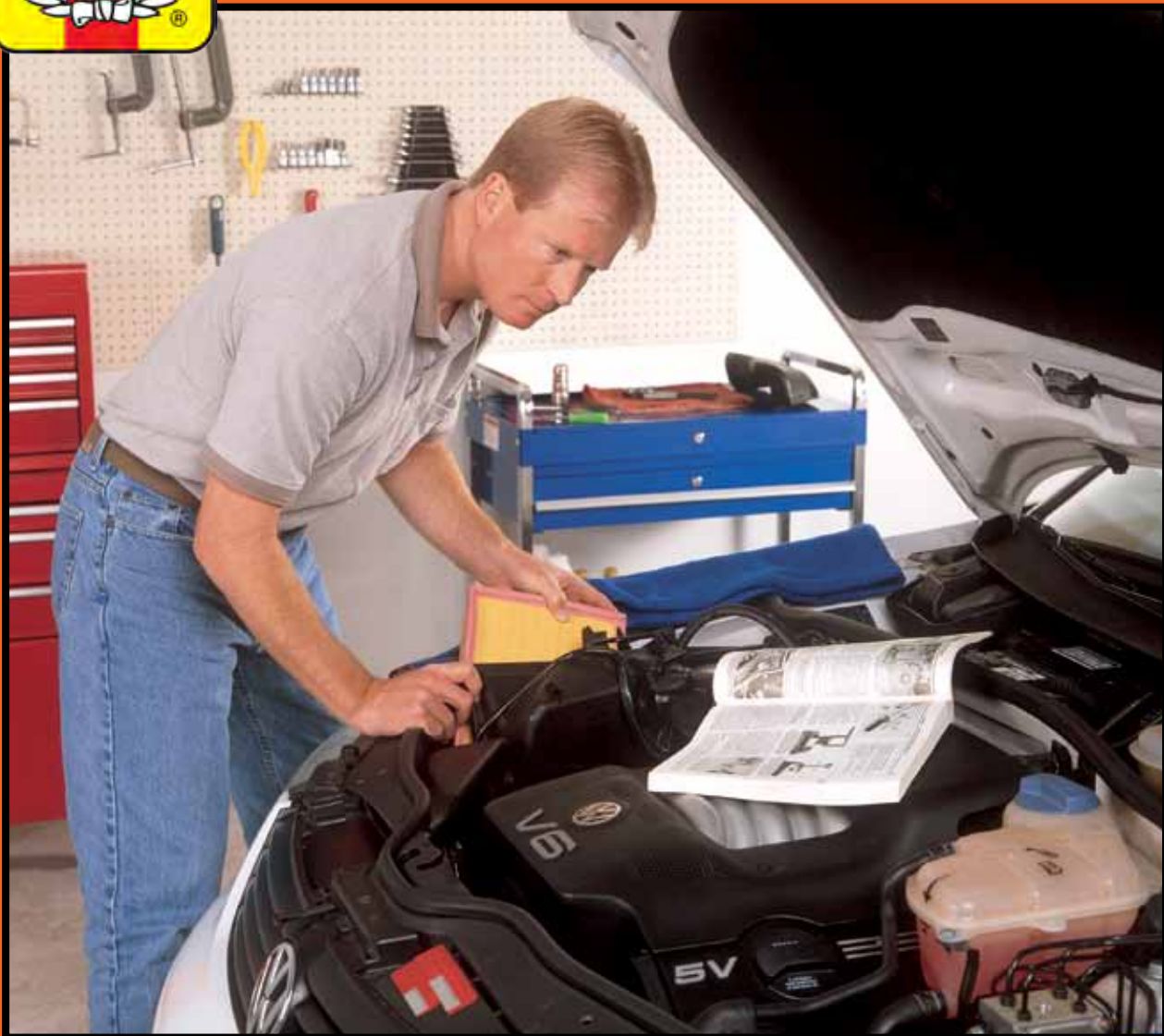
Book No: **4176**







**The worldwide leader in  
automotive repair information  
for over 50 years**



**Haynes Australia Pty Limited**

**Phone (02) 8713 1400 • Fax (02) 9708 3070 • sales@haynes.com.au**

**www.haynes.com.au**