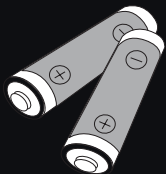
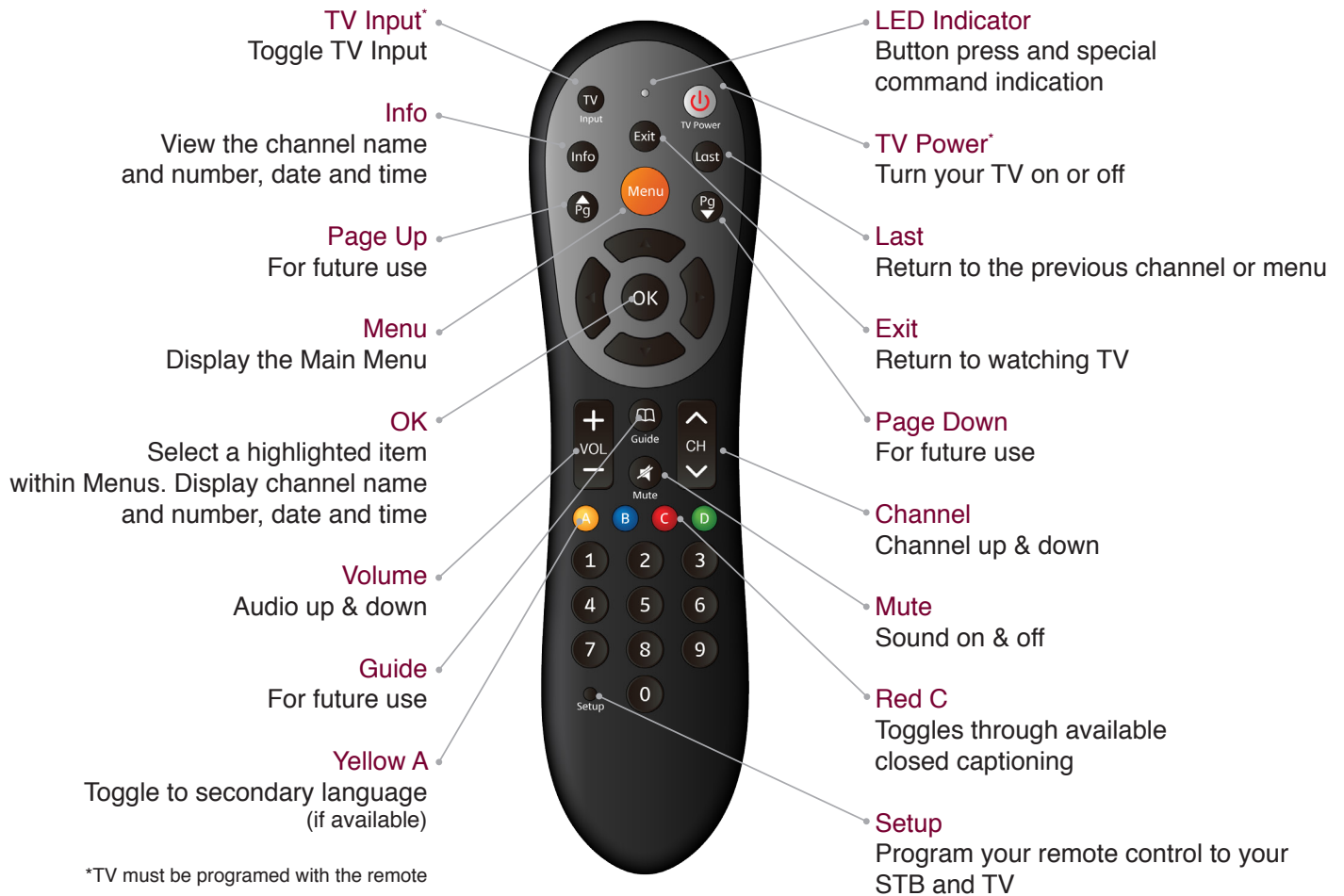


# HD uDTA Remote Control

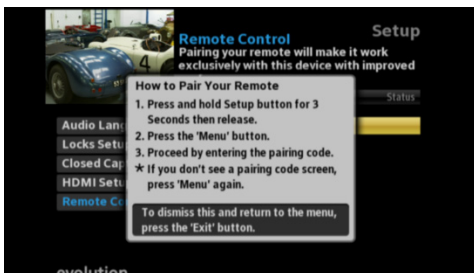


## NOTE

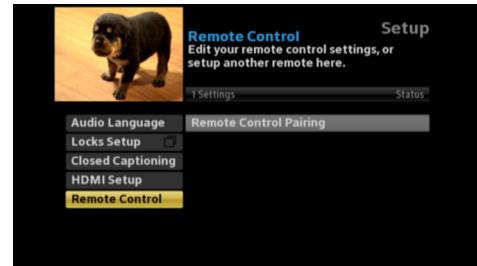
- When inserting batteries, make sure that the polarity (+/-) is correct.
- The LED on the top of the remote is a visual indicator that confirms the remote has power when a button is pressed.
- Your remote may vary slightly from the one pictured here. However, basic functions should remain the same.

## Pair your remote control with your HD STB to install it out of sight

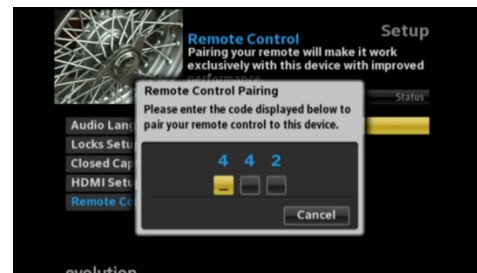
Your remote control can be paired directly with your HD STB, allowing you to place the device out of sight (in an entertainment center or behind your TV, for example). Once your remote is paired to a specific HD STB, it will not control any other set-top box in your home.



3. Press and hold **Setup** button until the LED Indicator turns green.
4. Press the **Menu** button.  
Please allow a few seconds for the menu to display



1. Press the **Menu** button.
2. Select Remote Control and then select **Remote Control Pairing**.



5. Proceed by entering the pairing code displayed in blue on the pairing code pop-up screen.

**Note:** If you don't see a pairing code screen, repeat steps 1 and 2.

## To force remote control to send volume control commands to the TV

1. Press and hold **Setup** button until the LED Indicator turns green.
2. Press the **volume up** button

## To force remote control to send volume control commands to the HD STB

1. Press and hold **Setup** button until the LED Indicator turns green.
2. Press the **volume down** button

**Note:** Refer to the Remote Control Programming and Operating instructions, provided with your remote control, to program your remote to work on your TV and for more detailed information regarding pairing your remote.

### RESET REMOTE PAIRING



### REMOVE REMOTE CONTROL PAIRING

If you would like to use your remote control for a different set-top box, you must first un-pair the remote control from the current device. Follow the steps below to remove the pairing.

- 1 Press and hold the Setup button until the LED Indicator turns green.
- 2 Enter 9-8-7 on the remote control.
- 3 The LED Indicator will blink green twice. the same.

# HD uDTA Remote Control

## Instructions for Programming Remote to Turn TV On & Off

The Evolution HD uDTA remote control will operate your Set Top Box. Additionally it may be programmed to turn your TV on and off.

### TV Code Programming

**Note:** The remote control operates a Sony TV by default. If you have a Sony TV, point the remote control at the TV and press the power button. If the TV operates, there is no need to program the remote control.

#### Program by Device Brand Code

1. Manually turn on the TV.
2. At the end of this page, find the brand name and code number for your TV.
3. Press and hold the **SET** button. Then press (tap) the **POWER** button at the same time. The LED will turn on solid, indicating the remote is in program mode. Release both buttons.
4. Enter the 3-digit device code (for example: code 005 under Panasonic TV). If the LED turns off, the code has been accepted by the remote control.
5. If the LED flashes twice, it means the code entered is incorrect, and the remote control remains in program mode with a solid LED. Re-enter the correct number again. The remote control will exit the program mode if the code is not entered within 8-10 seconds, at this point the LED will turn off.
6. Point the remote control to the TV and press the **POWER** button. If the TV turns off, the remote is now programmed to operate the TV.
7. If the TV fails to operate, go back to step 2 and enter the next code listed under the TV brand. Please be certain to try all codes listed per your TV's manufacturer.

#### Program by Auto Search

1. Manually turn on the TV.
2. Press and hold the **SET** button. Then press the **POWER** button simultaneously and hold them down for 3 seconds, The LED will begin flashing indicating the remote is in Auto Search mode. If the LED is not flashing, Wait till the LED turns off and then re-press both the **SET** and **POWER** buttons again.
3. Release both buttons and point the Remote Control to the TV. The POWER signal for TV is automatically transmitted to the device from the remote control (code scan). Once the

TV switches off, immediately press any button (except SET button) to stop the Auto Search.

4. Switch on the TV again by pressing the **POWER** button. If the TV operates, the Remote Control is programmed.

### **Program by Manual Search**

1. Manually turn on the TV.
2. Press and hold **SET** button, then press (tap) the **POWER** button. The LED turns on solid indicating the Remote Control is in program mode.
3. Point the Remote Control to the TV and press the **POWER** button once every 2 seconds until the TV turns off. The LED will flash each time.
4. Once the TV turns off, do not press any keys and wait till the LED on Remote Control turns off. The Remote Control is now programmed.

## **Brand Code List**

<b>Brand</b>	<b>TV Codes</b>
Abex	011, 286
Accurian	140, 452
Accuscan	005, 014
Acme	156
Action	002, 006, 010, 042
ADA	167
ADC	152, 154
Admiral	003, 004, 005, 014, 015, 018, 025, 035, 040, 041, 055, 165, 308, 455
Advantz	049
Advent	030, 080, 087, 094, 101, 238, 326, 456, 457
Adventura	279
Adventuri	001
Adyson	011
Agna	030
Aiko	024
Aiwa	011, 295, 296, 309
Akai	010, 012, 020, 021, 028, 031, 064, 071, 149, 211, 230, 361, 362, 372, 373, 410, 442
Alaron	037, 040
Alba	011, 012, 045
Albatron	002
Alfide	064
Alleron	010, 037, 193
Amark	002, 007, 011, 013, 014, 018, 035, 165
Ambassador	030, 039
America Action	041
American High	001, 021
Ampro	079

Amstrad	013, 038, 039
Amtron	001, 041, 062
Anam	041
Anamnational	019, 062, 150, 169, 184, 293
AOC	002, 006, 010, 011, 012, 013, 041, 042, 151, 152, 155, 159, 264, 280, 288, 341, 429, 439, 461, 476
Aomni	399
Apex	078, 081, 113, 321, 367, 423
Apex Digital	033, 042, 078, 081, 083, 113
Archer	002, 165
Aspect	198
Astar	472
Asuka	045
Audinac	041
Audio-Technica	006
Audiovox	002, 024, 040, 041, 054, 061, 062, 074, 090, 112, 140, 147, 348, 436, 457
AUVIO	451, 489
Aventura	038
Axion	147, 281, 454
Bang&Olufsen	291
Basicline	045
Baycrest	011, 043
Baysonic	041
Beaumark	004, 006, 010, 040
Belcor	006, 010, 151
Bell&Howell	003, 018, 025, 032, 040, 133, 191
BenQ	139, 215, 226, 383, 462
Bluesky	258, 386
Boxlight	118
Bradford	041, 062
Brick	013
Brockwood	006, 010, 020
Broksonic	002, 013, 039, 041, 046, 055, 142, 253, 315, 320, 458, 459
Brokwood	151
Candle	010, 013, 020, 043, 151, 155, 279
Capehart	002, 004, 006, 010, 011, 024, 280
Carnivale	010
Carver	018, 037
CCE	122
Celea	081
Celebrity	001, 149
Celera	081
Centrios	274
Centurion	155
Cetronic	184
Changhong	033, 081, 083, 087, 321
Cinego	016
Cineral	024, 054, 258
Citek	011, 014
Citizen	001, 002, 003, 006, 007, 010, 011, 013, 018, 020, 021, 024, 038, 041, 043, 048, 049, 054, 055, 062, 127, 151, 155, 184, 230, 253

Civet	042
Clairtone	042, 159
Clarion	041
Classic	006, 010, 020, 024, 081, 184, 321
COBY	359, 364, 463, 464
Color voice	156
Coloryme	004, 005, 006, 010, 011, 014, 018, 021, 151, 155, 156
Colt	006
Commercial solutions	014, 133
Concerto	020, 151, 155
Conic	006
Concierge	235
Contec	041, 042, 052, 159, 184, 062
Cornea	192
Craig	038, 040, 041, 049, 184, 062
Crosley	001, 010, 018, 026, 038, 041, 044
Crown	013, 020, 025, 041, 062, 064, 184
Crownmustang	064
CTX	165
Curtis Mathes	001, 003, 005, 006, 010, 011, 012, 013, 014, 015, 018, 020, 021, 025, 028, 032, 036, 040, 041, 054, 056, 071, 077, 124, 127, 131, 133, 151, 155, 160, 191, 230, 249, 318, 460
CXC	041, 184, 062
Cybervision	258
Daewoo	006, 007, 013, 024, 054, 061, 064, 064, 138, 139, 151, 152, 155, 156, 162, 163, 164, 181, 184, 185, 213, 225, 246, 247, 249, 256, 324
Dayton	024, 151, 155
Daytron	006, 010, 011, 013, 020, 024
Dell	006, 122, 134, 172, 251, 390
Denon	012, 019, 028, 060
Denstar	062
Diamond Vision	220, 304, 331
Digimate	346
Digistar	078, 087, 238, 251, 270, 272, 348, 384, 385
Digital Lifestyles	479
Digital Stream	453
Dimensia	133
Disney	253, 265
Dukane	198, 066
Dumont	003, 004, 006, 011, 041, 151, 235
Durabrand	002, 006, 038, 041, 055, 120, 253, 262, 290, 307, 370
Dwin	025, 077, 085
Dynasty	184
Dynex	421
Eaton	021
Electroband	001, 042, 149, 159
Electrograph	138
Electrohome	001, 006, 010, 011, 013, 020, 030, 031, 032, 042, 052, 150, 151, 155, 167
Elektra	003, 004, 061
Elite	045
Elite Video	297

Emerald	006, 039
Emerson	006, 011, 012, 013, 014, 029, 030, 032, 037, 038, 039, 040, 041, 042, 046, 048, 049, 054, 055, 061, 062, 141, 142, 155, 166, 168, 169, 171, 174, 175, 176, 177, 179, 181, 182, 183, 184, 186, 187, 191, 193, 249, 253, 282, 290, 304, 309, 310, 313, 315, 325
Envision	006, 010, 011, 013, 092, 151, 155, 341
Epson	097, 100
ESA	038, 071, 290
Fisher	001, 018, 032, 034, 052, 191, 234, 034
Flex Vision	074
Fortress	025
Fujitsu	040, 043, 067, 091, 105, 193, 297, 338
Funai	001, 013, 038, 040, 041, 062, 141, 184, 193, 290, 309, 325
Futuretec	184, 062
Futuretech	041
Gateway	138, 139, 188
GE	001, 005, 006, 008, 010, 012, 014, 015, 019, 021, 049, 054, 077, 124, 131, 133, 144, 150, 151, 155, 160, 167, 186, 194, 218, 232, 245, 190, 317
Gemini	014
Gibraltar	001, 004, 006, 010, 151, 235
Go Video	116
Go Vision	147
Gold Star	005, 006, 010, 011, 013, 014, 018, 020, 052, 106, 151, 152, 155, 197, 213, 264, 309, 316
Goodmans	050
GPX	040
Gradiente	017, 020, 037, 151, 238, 262, 344, 389
Grandtec	480
Granprix	040
Granada	011
Grundig	064, 067, 072
Grundy	040, 041, 062, 193
Grunpy	040, 041
Guestvision	299
Gvision	337
Haier	078, 120, 139, 307, 380, 409, 432
Hallmark	006, 040, 041, 044, 046, 151, 155
Hannspree	132
Harley-Davidson	001, 006, 010, 021, 040, 041, 141
Harman/Kardon	018
Harvard	041, 062
Hauppauge	403
Havermy	025
Heathkit	004
Helios	110
Hellokitty	054
Hewlett-Packard	336, 465, 481
Hikone	045
Himitsu	041, 062, 086
Hisense	078, 209, 284, 345

Hitachi	001, 003, 004, 005, 011, 012, 013, 014, 015, 018, 019, 020, 028, 031, 040, 042, 052, 066, 123, 141, 151, 155, 198, 199, 200, 254, 255, 257, 282, 309, 334, 437, 448, 482
Hyundai	103, 110, 369, 466, 467
ILO	259, 290, 298, 351, 357, 362, 408, 413
IMA	006, 040, 041, 046, 062
InFocus	133
Infinity	018, 314
Initial	259, 357, 357
Insignia	038, 173, 228, 238, 252, 253, 272, 290, 307, 325, 381, 417, 420, 477
Integra	283
Inteq	004, 028, 235
Janeil	279
JBL	018
JC Penney	008, 043, 052, 127, 133, 151, 152, 155, 160, 167, 174, 194, 218, 230, 232
JCB	001, 149
Jensen	030, 080, 094, 151, 155, 252
JIL	006, 010
Jutan	006, 010
JVC	010, 017, 018, 019, 052, 076, 170, 199, 203, 204, 206, 257, 266, 297, 311, 327, 434, 449
Kamp	004, 006, 041, 042
Kawasho	006, 010, 042, 149, 151, 155
Kaypani	280
KEC	021, 041
KEC0041	062
Kenmore	029
Kenwood	006, 010, 041, 151, 155
KLH	033, 041, 081, 083
Kloss	009, 010
Kloss Novabeam	205, 279
KMC	002, 011
Kogi	337
Konka	041, 045, 062, 073, 157, 161, 173, 189, 228, 322
KTV	010, 013, 041, 042, 048, 055, 062, 159, 166, 184, 207
Kurazai	003
Lark	032
Lasonic	304, 331
Legend	238
LG	002, 006, 010, 018, 020, 021, 052, 106, 107, 128, 151, 152, 155, 192, 197, 213, 251, 263, 264, 309, 316, 392, 483
Liquidvideo	273, 281
Lloyd's	010, 011, 013, 020, 040, 041, 046, 141
Lodgenet	003, 133, 300
Loewe	027, 018, 305, 485
Logik	003, 020, 040, 041, 046, 133
Luce	195
Luxman	020, 151, 155
Lxi	001, 003, 004, 005, 006, 007, 008, 009, 010, 011, 012, 013, 014, 015, 017, 018, 019, 020, 021, 025, 026, 029, 032, 033, 034, 035, 036, 038, 040, 048, 077, 127, 133, 151, 155, 160, 191, 232, 309



Macy	013, 043
Magnasonic	001, 002, 006, 010, 018, 020, 024, 025, 033, 040, 141, 193
Magnavox	001, 006, 007, 009, 010, 014, 015, 018, 021, 024, 026, 032, 038, 040, 041, 043, 044, 047, 049, 051, 072, 090, 101, 134, 138, 141, 151, 155, 205, 210, 257, 285, 308, 314, 325, 368, 411
Majestic	003, 004, 133
Marantz	010, 018, 031, 106, 134, 151, 155, 283
Matsui	013, 020, 039
Matsushita	015, 047, 063
Maxent	138, 139, 188
Medion	265, 277, 298
Megapower	002
Megatron	002, 006, 014, 020, 028, 031, 151, 155, 198
Mei	42159
Memorex	003, 006, 010, 011, 013, 020, 030, 032, 035, 040, 041, 055, 133, 142, 143, 145, 146, 151, 155, 191, 193, 253, 315, 339, 468
MGA	006, 010, 030, 034, 052, 151, 152, 155, 167, 193, 257
MGN Technology	006
Microgenius	030
Midland	004, 005, 006, 011, 013, 014, 015, 020, 077, 133, 160, 194, 232, 235
Mintek	259
Minutz	008
Mitsubishi	006, 010, 025, 030, 032, 034, 099, 111, 126, 151, 152, 155, 167, 193, 257, 261, 415, 418, 426
Monivision	002, 178
Montgomery Ward	003, 133
Moteva	191, 344
Motorola	015, 018, 019, 025, 030, 150, 165
MTC	006, 010, 011, 013, 020, 021, 024, 041, 042, 049, 127, 151, 152, 155, 159, 230
Multitech	040, 041, 062
Multivision	216
Myron&Davis	306
NAD	006, 020, 033, 036, 127, 151, 155, 286
NEC	003, 006, 010, 014, 020, 031, 035, 037, 059, 114, 137, 150, 151, 152, 155, 156, 257, 283, 474
Net TV	138, 188, 244
Newtech	020
Nexxtech	272, 356
Nikei	184
Nikko	010, 006, 024, 151, 155
Nikkodo	006, 010, 024
Niko	376
Nishi	005, 010
Norcent	078, 095, 185, 196
Noshi	005
NTC	024,
Nyon	001
Olevia	130, 353, 374, 375, 387
Oncommand	299
Onking	184
Onwa	041, 062, 184

Optimus	003, 006, 010, 011, 013, 020, 025, 030, 032, 035, 036, 041, 047, 063, 141, 145, 146, 275, 286
Optoma	132, 354
Optonica	025, 035, 165
Orion	004, 006, 039, 040, 041, 046, 055, 142, 177, 235, 253, 441
Pace	006, 024
Palsonic	086
Panasonic (National)	001, 005, 009, 010, 015, 018, 019, 033, 046, 047, 063, 129, 145, 146, 150, 194, 207, 275, 276, 323, 332, 405, 475
Panda	072
Pausa	040
Paxonic	006, 010, 011, 013, 021
PCE	021, 033, 040
Penney	001, 002, 003, 005, 006, 008, 010, 011, 012, 013, 014, 015, 020, 021, 033, 034, 047, 077, 131
Philco	006, 007, 009, 010, 012, 018, 026, 028, 040, 043, 044, 055, 088, 119, 150, 151, 152, 155, 157, 205, 210, 257, 285
Philips	010, 018, 020, 026, 038, 043, 044, 070, 101, 106, 134, 139, 150, 151, 205, 210, 217, 218, 257, 267, 285, 290, 302, 303, 314, 325, 382, 396, 400, 419, 444, 445
Philips Magnavox	018, 134, 285, 303, 308, 314
Pilot	006, 010, 013, 015, 020, 021, 151
Pioneer	012, 019, 036, 066, 151, 155, 219, 282, 283, 286, 424, 487
PIVA	358
Planar	339
Polaroid	081, 110, 173, 252, 278, 284, 348, 371, 468
Portland	002, 006, 011, 013, 024, 054, 151, 152, 155, 249,
Precision	039, 041, 042, 046, 049, 271
Price Club	230
Prima	030, 080, 087, 094, 238, 270, 272, 348
Princeton	002, 075
Princeton Graphics	075, 165
Prism	015, 019, 047, 194
Proscan	005, 014, 056, 077, 131, 133, 144, 160, 232, 268, 269, 425
Proton	002, 006, 013, 054, 056, 151, 155, 221, 280, 287, 342
Protron	346, 388
Proview	352, 353
Pulsar	003, 004, 006, 024, 151, 235
Pulser	006, 024
Quartz	006, 030
Quasar	003, 009, 015, 018, 019, 035, 047, 063, 145, 146, 150, 194, 207, 275, 276
Rabbit	014
Radio Shack	006, 010, 011, 013, 014, 020, 030, 032, 035, 041, 052, 062, 077, 133, 141, 143, 151, 155, 183, 184, 190, 191, 275, 309, 317
RCA	001, 005, 006, 008, 012, 014, 015, 018, 023, 025, 035, 066, 077, 085, 121, 124, 131, 133, 135, 144, 148, 150, 151, 152, 155, 160, 167, 190, 194, 222, 223, 225, 227, 232, 236, 245, 248, 268, 269, 282, 288, 289, 317, 431, 486
Realistic	002, 003, 006, 010, 011, 013, 014, 020, 030, 032, 035, 041, 052, 062, 133, 151, 155, 183, 184, 190, 191, 275, 309
Replay TV	484
Rhapsody	042, 159

Road Authority	049
Runco	003, 004, 010, 021, 059, 235, 283
Sampo	010, 011, 013, 014, 052, 138, 139, 151, 155, 188, 244, 280
Samsung	004, 006, 010, 011, 013, 014, 018, 019, 020, 021, 032, 052, 056, 071, 082, 093, 127, 151, 152, 154, 155, 160, 211, 213, 229, 230, 231, 277, 318, 329, 393, 395, 401, 402, 404, 414, 416
Samsux	012, 013, 155
Samtron	230
Sanky	006, 010, 012, 013, 021, 048
Sansui	006, 010, 021, 035, 055, 141, 142, 253, 315, 441, 443, 492
Santeca	294
Sanyo	001, 014, 018, 022, 029, 032, 034, 038, 052, 055, 089, 118, 138, 151, 191, 224, 233, 234, 407, 412, 430
Saville	021
Sceptre	260, 367
Scimitsu	006
Scotch	006, 151, 155
Scott	006, 010, 013, 039, 040, 041, 046, 062, 151, 155, 168, 177, 184, 193
Sears	001, 003, 004, 005, 006, 007, 008, 009, 010, 011, 012, 013, 014, 015, 017, 018, 019, 020, 021, 025, 026, 029, 032, 033, 034, 035, 036, 038, 040, 048, 052, 077, 109, 127, 133, 141, 151, 155, 160, 191, 193, 201, 230, 232, 234, 290, 320, 325
Seimitsu	006
Selectron	078, 349, 350, 490, 491, 492
Semp	333
Sharp	006, 011, 013, 018, 025, 035, 040, 041, 051, 058, 068, 069, 104, 151, 153, 155, 165, 201, 242, 243, 308, 406, 438, 478
Shengchia	025
Shivaki	006
Shogun	006, 151
Siemens	011, 028
Signature	003, 010, 014, 025, 035, 039, 040, 044, 133
Silver	006
Simpson	010, 006, 043, 044
Singer	021, 024
Solardrape	001, 011
Sole	092
Sonic	159
Sony	001, 004, 017, 030, 032, 098, 141, 149, 158, 208, 319, 391, 394, 397, 446, 447, 471
Soundesign	006, 020, 040, 041, 043, 062, 151, 155, 184, 193
Sova	335, 360
Soyo	365, 366, 433
Spectra	304
Spectravisio	006, 033, 034, 040, 043, 301
Spectricon	002, 011
Squareview	038, 290
SR1740	032, 038
SSS	006, 041, 062, 151, 184
Standard Components	045
Star Sight	202

Starlite	006, 041, 046, 062
Sunbrite	427
Superscan	025, 109, 201, 325
Supersonic	330
Supra	151, 214
Supremacy	013, 043, 279
Supreme	001, 149
SV1740	018
SVA	078, 110, 306
Sylvania	001, 006, 007, 009, 010, 014, 015, 018, 020, 024, 026, 032, 034, 038, 040, 043, 044, 141, 151, 155, 205, 210, 253, 257, 267, 285, 290, 309, 325, 435
Symphonic	001, 006, 038, 040, 041, 062, 141, 168, 290, 309, 325
Syntax	130, 353, 374, 375
Tandy	013, 025, 035, 045, 165
Tatung	001, 002, 012, 015, 019, 139, 150, 298
Teac	029, 032, 034, 049, 069, 072
Technics	015, 018, 019, 047, 194
Technisat	488
Technol Ace	040
Technovox	010
Techwood	002, 015, 019, 020, 021, 047, 151, 155, 194
Teknika	003, 006, 011, 013, 018, 020, 021, 024, 030, 040, 041, 043, 052, 055, 062, 127, 133, 151, 152, 155, 184, 193, 230, 275, 279
Telecaption	239
Telecolor	004
Telefunken	020, 071
Telerent	133, 003
Teleton	043
Tera	151, 287
Tevion	298
Thomas	006, 013, 014, 020, 141
Thomson	014, 133
TMK	006, 020, 039, 041, 046, 151, 155
Tnci	004
Tocom	033
Tomashi	049
Toshiba	021, 028, 030, 032, 033, 035, 036, 052, 063, 096, 102, 123, 125, 127, 128, 136, 137, 191, 230, 239, 241, 257, 275, 283, 312, 318, 320, 328, 422, 440, 473
Tosonic	042
Totevision	013, 015
Toyomenka	006
Truetone	015, 019, 047
Trutech	355, 363, 378
TVS	055
Uher	006
Ultra	006, 013, 024
Unitech	013
Universal	008, 014, 218
Universum	011, 029, 037, 039
V	109, 115, 138, 139

Vidtech	151, 152, 155
View Sonic	066, 108, 109, 115, 138, 188, 342, 377, 469
Viking	279
Viore	347, 428, 442
Vivtor	199
Visio	109, 115, 138, 139
Vizio	109, 115, 139, 343, 450
Vector Research	010
Victor	017
Vidikron	018
Vidtech	006
Viking	021
Wards	001, 003, 004, 005, 006, 007, 008, 010, 012, 013, 014, 015, 018, 020, 025, 026, 031, 032, 035, 036, 040, 043, 044, 046, 125, 133, 151, 152, 155, 168, 193, 205, 210, 218, 240
Waycon	033
Welton	006
Westinghouse	001, 054, 115, 117, 237, 379
White-Westinghouse	040, 046, 054, 055, 061, 117, 213, 225, 249, 309, 340, 470
World	041, 046, 054, 055
XR 0680	003, 026, 032, 038, 040, 041
Yamaha	006, 010, 084, 097, 151, 152, 155, 275
Yorx	010
Zenith	001, 003, 004, 006, 010, 013, 014, 024, 025, 028, 029, 038, 039, 055, 071, 123, 128, 141, 142, 151, 155, 180, 181, 192, 198, 202, 212, 235, 249, 250, 253, 262, 308, 309, 311, 314, 315, 316, 318, 398
Zonda	002, 086