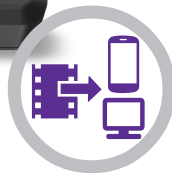
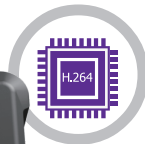




HDML CLONER WAND

Powerful mini video capture tool

Enrich your video collection



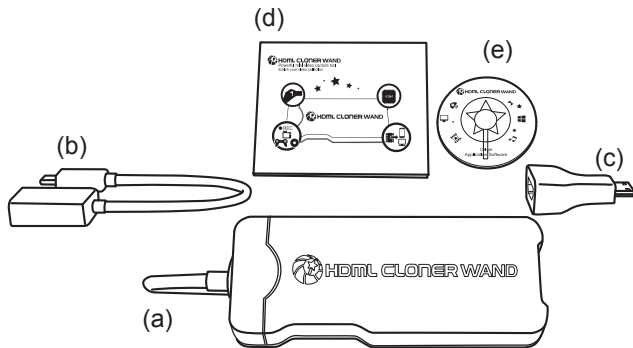
SAFETY PRECAUTIONS

Before using HDML-Cloner Wand, please ensure that you read and understand the safety precautions below:

1. Do not attempt to open the case of HDML-Cloner Wand or modify it in any way, as this will void the warranty.
2. Keep HDML-Cloner Wand away from water and other liquids, as this may cause the unit to malfunction.
3. HDML-Cloner Wand may become warm during use. This does not indicate malfunction.
4. Do not place heavy objects on HDML-Cloner Wand, as this may cause the unit to overheat and malfunction.
5. If the exterior of HDML-Cloner Wand requires cleaning, wipe it with a soft dry cloth.
6. Do not dispose of the unit via conventional domestic waste.

Box Contents	1
How to use HDML-Cloner Wand under Windows OS	2
Obtain HDML-Cloner Wand Helper	2
Install	2
Register	7
Record/Capture	8
Troubleshooting	14
How to use HDML-Cloner Wand under Android OS	16
Obtain HDML-Cloner Wand Helper Mobile	16
Install	17
Register	18
Record/Capture	20
Troubleshooting	24
Supported Resolutions	24
Product Specifications	25
Contact Us	26

BOX CONTENTS



- a. HDML-Cloner Wand
- c. HDMI to mini-HDMI connector
- e. Installation CD

- b. OTG Cable
- d. User Manual

How to use HDML-Cloner Wand under Windows OS

1. Obtain HDML-Cloner Wand Helper

There are two methods to obtain HDML-Cloner Wand Helper. One is to install it from the installation CD, while the other is to download from

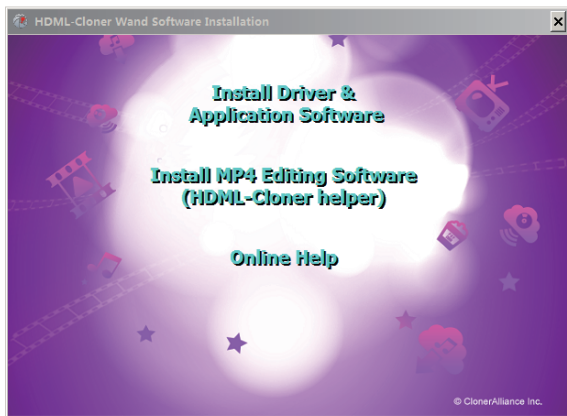
<http://www.cloner-alliance.com/download.html>

Note: Before installation, please make sure you are using Windows Vista or later versions and your PC is equipped with USB 2.0 or 3.0 port.

2. Install

(1) Install HDML-Cloner Wand Helper

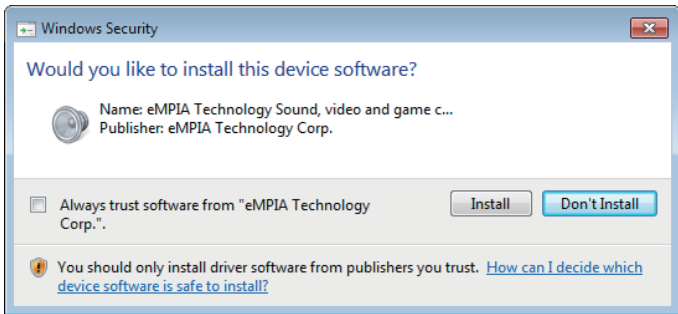
1. Put the installation CD into the PC drive and the setup window will pop up as below:



2. Click "Install Driver & Application Software" and follow the instructions of installation wizard. Click Next – Next – Next – Install – Install – Restart the computer.



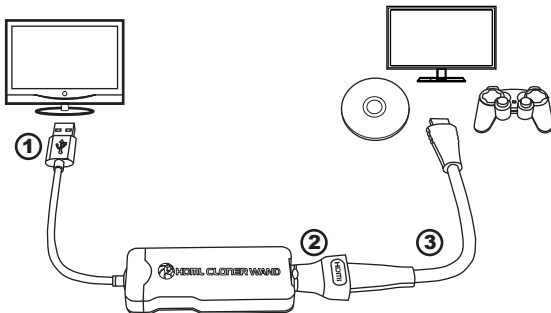
Note: During the software installation, a driver needs to be installed as well. When there is a prompt popped up as below, please click "Install".



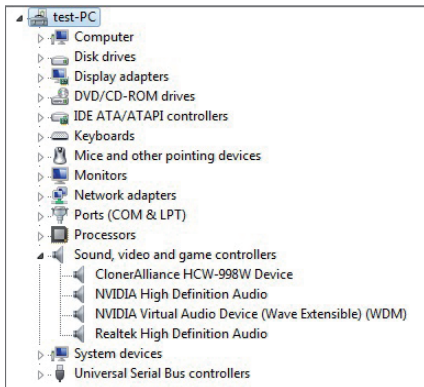
(2) Connect HDML-Cloner Wand device

1. Plug the USB cable on HDML-Cloner Wand into the USB port of PC.
2. Plug the mini connector end to the HDMI port of HDML-Cloner Wand.
3. Connect an HDMI cable between the HDMI to mini-HDMI connector and HDMI input device.

Note: Please connect devices strictly in the order of 1-2-3, otherwise the problem "USB Device Not Recognized" may occur.



After installing HDML-Cloner Wand Helper and HDML-Cloner Wand device has been connected to the USB port of PC, the system will prompt "Found a new hardware" and install the driver automatically. Please make sure "ClonerAlliance HCW-998W Device" appears in the Device Manager (Right click on My Computer – Manage – System Tools – Device Manager). If "ClonerAlliance HCW-998W Device" is not in the list, please reinstall HDML-Cloner Wand Helper and try again.





3. Register

Please register HDML-Cloner Wand Helper first before using.

Note: The trial version can only record 10 minutes of video.

Run HDML-Cloner Wand Helper. Click  on the main interface to open the "About" window. Then click on the "Register" button to open the "Register" window.

 **Register (AF54C63C)**

 Make sure your computer is connected to the Internet. Then enter your registration code, name and Email. The code can be found in the label on the enclosure of HDML-Cloner Wand. Please fill in your real name and proper Email address, which will be used for after-sales service.

Email:

Name:

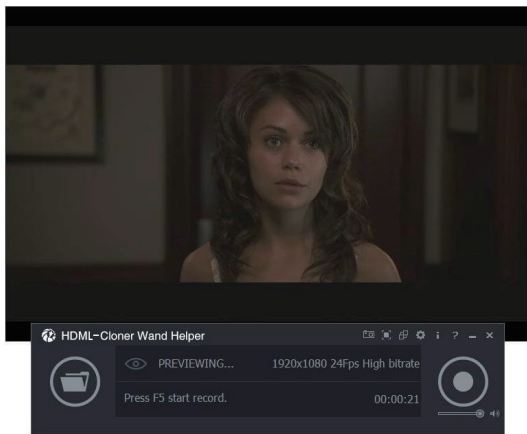
Code:


(eg: DA0XXX-XXXXXX-XXXXXX-XXXXXX-XXXXXX)

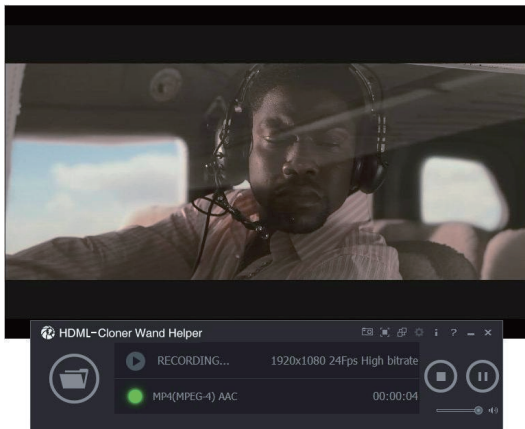
Fill in your proper Email address, real name and code. The registration code is labeled on the back of HDML-Cloner Wand. Then click on "OK" to finish the registration.




4. Record/Capture

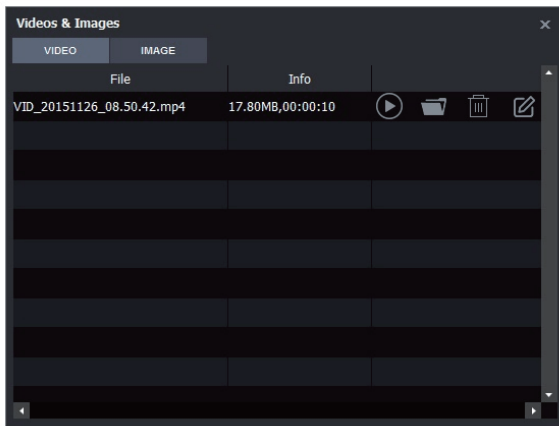
After HDML-Cloner Wand Helper installed and HDML-Cloner Wand connected properly, run HDML-Cloner Wand Helper.

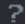


Click on  to start recording. Or press the hotkey according to the interface prompt to start recording.



Click on  to stop recording. Then you can click on  to open the "Videos & Images" window in which the recorded videos are displayed. You can click on  to play the output video directly.



To get more information about recording, please click  to view the help file.

Please make sure there is enough disk space when recording. Different bitrates need different disk space. See below:

Note: The followings are estimated values. The actual values may float.

Bitrate	Resolution	Video size of recording 90 minutes in 720p (GB)	Video size of recording 90 minutes in 1080p (GB)
	High	3.4GB	6.6GB
	Mid	3.1GB	4.8GB
	Low	2.6GB	3.4GB

If the following interface appears, please contact our support team: support@cloner-alliance.com



Sorry,can not play this content.

(For more information,please contect our support)

5. Troubleshooting

1> Why is there a prompt "Not found HDML-Cloner Wand device" when running HDML-Cloner Wand Helper?

Please check whether the USB cable on HDML-Cloner Wand has been plugged into the USB port of PC. If not, please plug it and run HDML-Cloner Wand Helper again. If yes, please disconnect the HDMI cable on HDML-Cloner Wand and unplug the device from the USB port. Then plug in the device again. Wait 3 seconds, plug the HDMI cable and run HDML-Cloner Wand Helper. If the problem still exists, please change another USB port and try again. If it still doesn't work, please make sure the device has been plugged into the USB port and then reinstall HDML-Cloner Wand Helper. If it prompts you to restart the computer, please do it and then try again.

2> Why is there a prompt "USB Device Not Recognized"?

This may occur due to insufficient power supply of the USB port. Please try another USB port. If the problem still exists, please check whether the USB cable on HDML-Cloner Wand has been plugged into the USB port of PC. If not, please plug it and run HDML-Cloner Wand Helper again. If yes, please disconnect the HDMI cable on HDML-Cloner Wand and unplug the device from the USB port. Then plug in the device again. Wait 3 seconds, plug the HDMI cable and run HDML-Cloner Wand Helper. If it still doesn't work, please make sure the device has been

plugged into the USB port and then reinstall HDML-Cloner Wand Helper. If it prompts you to restart the computer, please do it and then try again.

3> Why are there no images, only showing "Loading animation..." all the time on the playback window and "Reviewing..." is shown on the interface after running HDML-Cloner Wand Helper?

Unplug the device from the USB port, close HDML-Cloner Wand Helper and disconnect the HDMI cable. Then plug the device, plug the HDMI cable and run HDML-Cloner Wand Helper. If this problem still exists, please turn off the device power. Wait 3 seconds and turn on the power again.

How to use HDML-Cloner Wand under Android OS

1. Obtain HDML-Cloner Wand Helper Mobile

Please download the latest version of HDML-Cloner Wand Helper Mobile from the official site: <http://www.cloner-alliance.com/download.html> or scan the following QR code to download from Google play.



2. Install

(1) Install HDML-Cloner Wand Helper Mobile

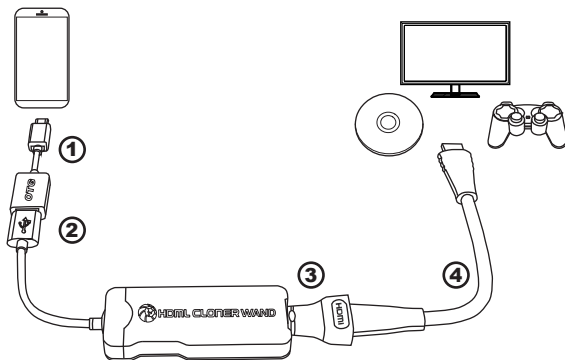
Please tap on the "Install" button to install HDML-Cloner Wand Helper Mobile from the corresponding application page on Google play. If there is a prompt "Unsupported device", it indicates that your phone is not supported, please change other phones to install. You can also download the APK installation package through the browser and install.

Note: Before the installation, please make sure you are using a mobile phone with Android 4.1 or above supporting OTG.

(2) Connect HDML-Cloner Wand device


1. Plug the OTG cable into the USB port of Android phone.
2. Plug the USB cable on HDML-Cloner Wand into the other end of the OTG cable.
3. Plug the mini connector end to the HDMI port of HDML-Cloner Wand.
4. Connect an HDMI cable between the HDMI to mini-HDMI connector and HDMI input device.

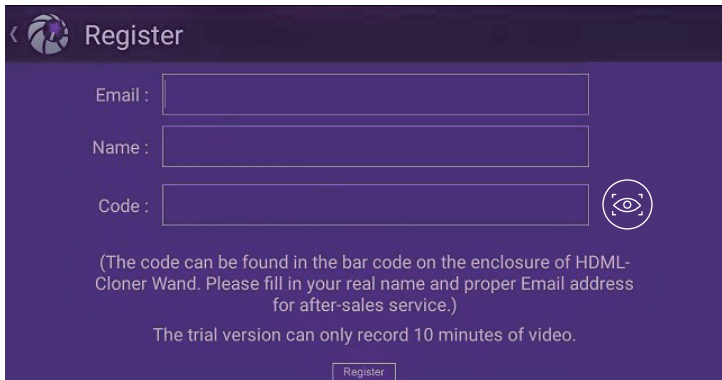
Note: Please connect devices strictly in the order of 1-2-3-4, otherwise the problem "Not found HDML-Cloner Wand device" may occur.




3. Register

Please register HDML-Cloner Wand Helper Mobile first before using, otherwise it can only record 10 minutes of video.


Run HDML-Cloner Wand Helper Mobile. Tap on  and select the "About" option in the drop-down bar to open the "About" window. Then tap on the "Register" button to open the "Register" window.



<  Register

Email :

Name :

Code : 

(The code can be found in the bar code on the enclosure of HDML-Cloner Wand. Please fill in your real name and proper Email address for after-sales service.)

The trial version can only record 10 minutes of video.

Fill in your proper Email address, real name and code. You can scan the QR code in the label on the back of HDML-Cloner Wand directly using the QR code scanning tool and the code will be identified automatically. Then tap on "Register" to finish the registration.

4. Record/Capture

Run HDML-Cloner Wand Helper Mobile. Tap on the preview window to show the tool bar.





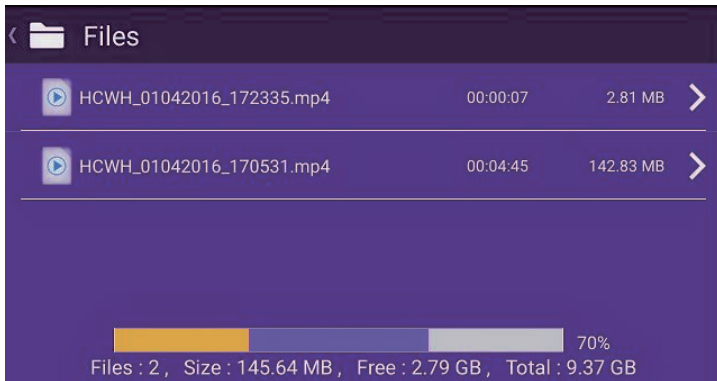
Tap on



to start recording.



Tap on  to stop recording. Then you can tap on  to open the "Files" window in which the recorded videos are displayed. If you want to play the video, simply tap on the video to start playing.



To get more information about recording, please refer to "Online Help" on the "About" window.

Please make sure there is enough disk space when recording. Different bitrates need different disk space. See below:

Note: The followings are estimated values. The actual values may float.

Bitrate	Resolution	Video size of recording 90 minutes in 720p (GB)	Video size of recording 90 minutes in 1080p (GB)
	High	3.1GB	6GB
	Mid	2.67GB	3.26GB
	Low	1.55GB	1.56GB

5. Troubleshooting

1> Why is there always a prompt "Not found HDML-Cloner Wand device" when connecting the Android phone? And why is there sometimes a charging tip on the mobile phone?

Please connect the OTG cable to the mobile phone first, then connect HDML-Cloner Wand device and finally connect the HDMI cable. If this problem still exists, please reboot your phone and try again.

Supported Resolutions

Input/Output	1920x1080 (50p), 1920x1080 (60p) 1920x1080 (24p), 1920x1080 (25p), 1920x1080 (30p) 1920x1080 (50i), 1920x1080 (60i), 1280x1024 (60p) 1280x720 (60p), 1280x768 (60p), 1280x800 (60p) 720x480 (60i), 720x480 (50i) 640x480 (60p), 720x480 (60p), 720x576 (50p)
Recording	1920x1080 (24p), 1920x1080 (25p), 1920x1080 (30p) 1280x720 (50p), 1280x720 (60p) 640x480 (60p), 720x480 (60p), 720x576 (50p)

PRODUCT SPECIFICATIONS

Recorded format	MP4 (H.264)
Video format (input)	NTSC, PAL, PAL-60
Input signals	HDMI
Output signals	USB data
Bitrate	High: about 18Mbps (PC) 15Mbps (Android phone) Mid: about 12Mbps (PC) 8Mbps (Android phone) Low: about 8Mbps (PC) 3Mbps (Android phone)
Output resolution	1080p/720p/480p (PC) 1080p/720p (Android phone)
Weight	1.0 oz
Dimensions	3.2 x 1.3 x 0.4 inches

CONTACT US

- If you encounter problems about using and upgrading hardware and software, or retrieving your lost registration code, please contact our support team: support@cloner-alliance.com
- If you have questions about batch purchase, affiliate program, commercial cooperation or advertisements, please send an Email to: market@cloner-alliance.com