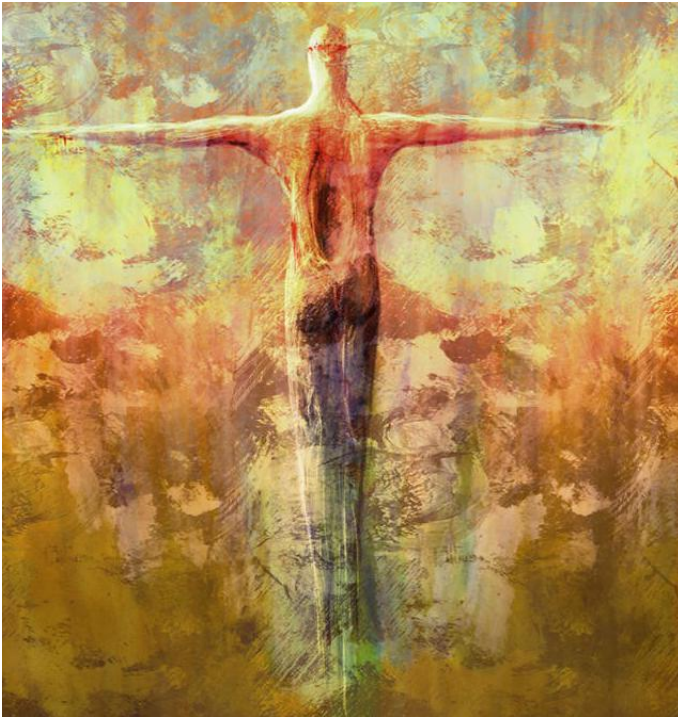




April
2021

Betley



**He is risen!
He is risen indeed!**

PARISH NEWS

All profits go towards the maintenance of the churchyard

60p

St Margaret's Church***Celebrating, sharing and growing in God's love*****Officers of the Parish Church of St Margaret's, Betley****VICAR OF BETLEY AND OF MADELEY**

Revd. Tim Watson
The Vicarage, Vicarage Lane, Madeley, CW3 9PQ 01782 750205

ASSISTANT PRIEST

Revd. Pamela Lane 01270 820258

ORDAINED LOCAL MINISTER

Revd. Alan Bailey 01270 820043

CURATE

Revd. John Beswick Pallister (johnbpallister@gmail.com) 07428 342801

CHURCH WARDENS

Mrs. Jennifer Walton, 01270 820051
6 Court Walk, Betley, CW3 9DP

Mr. Kevin Hamer, 01270 820704
Shade House, Main Road. Betley, CW3 9AA

READERS

Mr. Kevin Hamer, 01270 820704
Mrs. Jennifer Walton 01270 820051
Mrs. Jean Ainsworth 01270 820532

READER EMERITUS

Mr. Michael Darlington 01270 820582

CHOIRMASTER

Mr. Kevin Hamer 01270 820704

ORGANIST

Mrs Alison Hendricken (alisonhendricken@sky.com) 01270 820078

CAPTAIN OF THE BELFRY

Mr. Robert Bailey 01270 820522

CHURCH CLERK

Mr. Bernard Swift 01270 821760

PCC TREASURER

Mr. Graham Holton 01270 821457
Hall Lodge, Chamberlain Court, Betley, CW3 9GB

SAFEGUARDING COORDINATOR

Mrs. Jennifer Walton 01270 820051

MAGAZINE DISTRIBUTION QUERIES

Mrs. Sue Cheetham 01270 820463

MAGAZINE EDITORS

Sadie & Ken Blankley 01270 829128

Please email all items by the 15th of the
preceding month to **BetleyParishMag@gmail.com**



A MESSAGE FROM THE VICAR



This month we are celebrating Easter, the most important Christian festival there is. At Easter we remember Jesus' sacrifice on the cross on Good Friday. His dying for our failings – God's son, hung up on a cross, alone and dying for each of us. We also celebrate Jesus' rising from the dead and a message of hope that has been proclaimed every year for 2000 years. I often call Easter

Sunday, 'Resurrection Day', because for me, this is the day that reminds me that as a Christian, I am called to live every day in the light of Jesus' resurrection. A resurrection that is such hopeful good news it should be shouted from the rooftops and whispered in private conversations.

This year, I have found it particularly helpful to reflect on the day between Good Friday and Easter Sunday – what is known as 'Holy Saturday'. We remember the Saturday of that first Easter as a time when Jesus' body lay silent, still and dead in the tomb. He had died on Friday and was not resurrected until Sunday. Saturday, was quite literally, a dead space. An in-between time. Before his death Jesus had said that he would rise again, but would he actually rise again? His disciples and the people had to wait to find out. Wait for hope to bring new life.

As I write this in the midst of lockdown, I'm sure there are people for whom this place of waiting might feel particularly relevant. And just like the first disciples, we wait, in hope, for what is to come.

Blessings,

Rev Tim

IN THIS MONTH'S BETLEY PARISH NEWS ...

The days are getting warmer at last, and there is the prospect of fewer restrictions on daily life and a return to familiar village activities. Children at Betley School returned to their classes eagerly at the beginning of the month – see what they've been up to on page 12.

For now church worship remains online but there is a good series of events planned for Holy Week including a virtual Passion Play by the Yorkshire theatre company Riding Lights. Full details on page 6.

On the other side of Easter and also online there's this year's Alpha course. Through a series of evening sessions led by our clergy team, it's the place to go for some answers to life's big questions, see page 10.

At the end of February work began to clean up the pavements heading out towards Madeley and make it much safer to walk and run along that busy road. There's an update on progress on page 8.

During the Covid restrictions, police surgeries in the village have been suspended, see page 22 for alternative ways to contact Staffordshire Police other than in an emergency when the advice is always to ring 999.

And then do you know your Eggs Benedict from your Eggs Florentine? Take a look at the cracking Easter Quiz on page 20.

The Editors

Give Thanks appeal



Have you had your Covid-19 vaccination? Let's not take for granted that within a few miles of our homes, and for free, we can have the vaccinations that will get us out of the global pandemic.

When you've had your vaccination please consider making a donation to the Christian Aid 'Give Thanks' appeal via the Diocese of Lichfield website here: <https://giving.tapsimple.org/online/christian-aid/diolichfield>

'None Safe Until Everyone's Safe'

Sadie Blankley

**ST MARGARET'S BETLEY...SERVICES IN APRIL**

As the national lockdown continues the following services will be on Zoom, serving both Betley and Madeley.

Everyone is welcome and you will need login details to join. Please sign up to our mailing list at www.tiny.cc/weeklymail to receive this, or contact John or one of the churchwardens.

Sunday 4th April Easter Day	6:30am	SonRise prayers
	11:00am	Holy Communion Mark 16:1-8
	6:30pm	<i>Living Streams</i> Praise!
Tuesday 6 th April	9:15am	Morning Prayers
Sunday 11th April Second Sunday of Easter	11:00am	Service of the Word John 20:19-31
	Tuesday 13 th April	9:15am
Sunday 18th April Third Sunday of Easter	11:00am	Holy Communion Luke 24:36-48
	Tuesday 20 th April	9:15am
Sunday 25th April Fourth Sunday of Easter	11:00am	Holy Communion John 10:11-18
	Tuesday 27 th April	9:15am



St. Margaret's continues to be open for individual private prayer between 9.00am and 5.00pm daily
You are welcome to enter but please follow the guidelines posted on the church door and close the door when you leave.



Holy Week and Easter at St. Margaret's

on Zoom via
www.tiny.cc/BetleyMadeley

Palm Sunday 28th March

11.00 am Holy Communion Service

Tuesday 30th March

9.15 am Holy Week Prayers

7.30 pm 'Breaking Day'

Online Theatre by Riding Lights
Theatre Company with reflections

Access only via Church e-mail



Maundy Thursday – 1st April

7.30 pm Memorial of the Last Supper

Good Friday – 2nd April

4.00 pm Family Worship

Holy Saturday – 3rd April

7.30 pm An alternative reflection in words, music and art

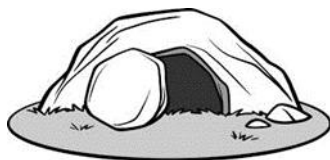
Easter Day

6.30 am Easter SonRise

11.00 am Easter Family Communion

6.30 pm Living Streams Easter Praise

All are welcome at www.tiny.cc/BetleyMadeley





ST MARGARET'S ANNUAL PAROCHIAL CHURCH MEETING

The Annual Parochial Church Meeting normally takes place before the end of April. However, the Church of England has extended this deadline to the end of May this year. The PCC will set the date at the March PCC meeting. As usual there will be an election of two Church Wardens, ten PCC members and one Deanery Synod Representative. The extended timeline will allow us to put all the paperwork together and collect nominations. It is expected that the meeting will be on Zoom, but it may be possible to hold it in Church by then, as Covid guidelines are due to change again in May.

It isn't too early to think about how you might be able to contribute to the work of the PCC. If you want any further information at this time please call me, or Kevin Hamer.

Please pray for guidance, are you being called to serve God in this way?

Jennifer Walton

PCC Chair 2020/2021

CHURCH FOR CHILDREN AND YOUNG PEOPLE

Praise and Play

The toddler group is online-only which is certainly better than *not* meeting! Please see our Facebook page for news.

Early Birds/Kids' Church

On Sunday mornings there's *Kids' Church* which you can join online and do at home.

School assemblies

School assemblies will be recorded videos until it is safe to meet again.

Youth Group

Our youth group will continue on Zoom for the time being. Please pass on the message about this group, and let John know of anyone who might like to join. **The Youth Group will be meeting on 11th and 25th April.**

For information about any of these activities, contact John, as below.

Revd. John Beswick Pallister
johnbpallister@gmail.com (07428 342808)

FROM THE PARISH REGISTERS ...

Funeral:

On Monday 22nd February James Pagan who died 27th January, aged 73yrs. Followed by burial in the churchyard.

May He Rest In Peace

BETLEY, BALTERLEY & WRINEHILL PARISH COUNCIL

Pavement works

Many residents will have noticed the excellent work done to improve the pavement between Wrinehill and Madeley by a combination of Borough and County Council staff along with local volunteers. It has really made a difference and that stretch is easier and safer to use; we have already noticed the increased use being made of it.

It is an excellent example of co-operative working between the various councils and we thank Paul Northcott, our local County Councillor, Gary and Simon White, our Borough Councillors, and Madeley Parish Council. Thanks also to local landowners who assisted by cutting back their hedges where necessary and Parish Council Chairman Robert Bettley-Smith who has coordinated it all and turned out with other local volunteers to carry out part of the work.

The Parish Council will now turn its attention to the A531 pavement between Betley and Balterley where volunteers will be clearing the necessary sections, and the B5500 pavement from Balterley toward Audley where contractors will be used. Again, our thanks to all who have been involved with this project.

Going forward, bearing in mind the pressure on resources at every level of Local Government, if we are to keep these pavements in their present condition there is a need to carry out some work on a voluntary basis. The key thing will be to prevent the build-up of decayed vegetative matter (mainly leaves) and soil as this causes the verges to creep on to the pavement: once grass is established it traps dust and debris and compounds the issue with ever increasing growth (known as 'exponential degradation').

Covid 19

As this issue goes to print vaccination is progressing well and there is still a steady improvement in infection rates and hospitalisations. The figures at 16th March show that the civil parish is now in the lowest category for case rates, along with areas such as Madeley, Weston, Loggerheads, Baldwins Gate, Shavington and Nantwich. However if we are to continue to make progress *it remains vital that we all still follow Government health guidelines.*

If you have symptoms you should arrange a test as soon as possible either via the website www.gov.uk/get-coronavirus-test or by phone on 119. While you are awaiting your test appointment or results *you must self-isolate, and clearly if you have a positive test result you and your household must self-isolate for the necessary period.*

As we go to print this testing is also available for Staffordshire residents without symptoms at www.staffordshire.zipporah.co.uk/TrackAndTrace but please note this must not be used if you have any symptoms.

Neighbourhood Plan

The Betley, Balterley & Wrinehill Neighbourhood Plan has now been approved by the Parish Council for submission to the Borough Council. The Council wishes to express its gratitude to members of the Working Group who have done an immense amount of work in putting together an excellent document to protect our area from inappropriate development in the future.

The Borough Council now takes over the process and they will arrange the



following:

- A further period of consultation;
- The appointment of an independent planning inspector who will examine the Neighbourhood Plan and make any changes felt necessary;
- A local referendum.

If residents support the Plan it will become part of official planning policy for our area. *We cannot emphasise enough how important the Neighbourhood Plan could be to the future of Betley, Balterley and Wrinehill, particularly since there is no current Newcastle Borough Local Plan. We have seen elsewhere, for example in Cheshire East, that areas without a Local Plan can be open to all sorts of inappropriate development as there is then no local planning framework. Getting a Neighbourhood Plan in place can help to control development so that it meets local needs rather than the business interests of developers.*

And the work goes on . . .

Covid has meant that ordinary physical meetings of the Council have not been possible for the past year. However members have met via Zoom and the general work of the Council has continued.

The Council continues to assess and comment on planning applications before they are considered by Newcastle Borough Council’s planning department and committee. The Parish Council is a consultee on planning, the actual decisions as to whether to permit are entirely in the hands of the Borough Council. Generally there is a good relationship between the two councils and most planning decisions reflect the views of the Parish Council. However from time to time the Borough Council makes decisions contrary to the views of the Parish Council (e.g. over the Blue Bell site) so if you see a development that doesn’t look appropriate please don’t assume the Parish Council is somehow to blame - it may be that we objected, but that the Borough Council took a different view!

Next Meeting

The Parish Council will next meet (on Zoom) on Thursday 22nd April. For details of how to view the meeting, how to raise any matters during the Public Participation section, or on any other matter relating to the Council please contact the Clerk. We are uncertain when normal meetings will resume. Under the present statutory requirements, the current arrangements are valid until May but the National Association of Local Councils (NALC) is seeking an extension, bearing in mind that Covid rules restrict certain activities indoors until 21st June. Details of all meetings are posted on the local noticeboards and on the Council’s website at www.betley-balterley-wrinehill.org.uk .

Gwyn Griffiths

Clerk

griffiths725@btinternet.com

01270 663832

BOROUGH COUNCILLORS

Cllr Simon White
 Simon.white@newcastle-staffs.gov.uk
 Tel 07561 340 899

Cllr Gary White
 Gary.white@newcastle-staffs.gov.uk
 Tel 07834 090 747

TRY ALPHA ONLINE



WHO: St. Margaret's Betley and All Saints' Madeley will be running Alpha Online via Zoom

WHAT: Alpha Online is a great opportunity to gather with others online to explore the Christian faith. Each session will include a talk and discussion

WHEN: Starting on Tuesday 13th April and running through until 6th July. We'll meet online from 7:30-8:45pm (Bring your own refreshments!) There will be a special online 'away day' on Saturday 5th June

HOW: Contact Rev Tim Watson:
revtimwatson@hotmail.com/01782 750 205 to register your interest and in due course you will be emailed a Zoom link

WHY: Exploring faith is always a good thing to do, but the last year might have prompted you to ask yourself some big questions – why not take the time to explore them?



ALPHA AND ME

“The Alpha course is used around the world to help people explore the Christian faith. Alpha is a great place to ask questions, in a safe and friendly environment, about faith and the difference faith can make .

Way back in 1999 I attended an Alpha course in a church in Yorkshire. I was a student at the time and had arrived at university with a whole bunch of questions about the meaning of life, I wanted to know more about what the point of all ‘this’ was, why do we exist? How should I live my life? Is there a God?

Alpha was a safe place to explore those questions and more. Alpha provided an opportunity to speak to others who had similar questions and who were on similar journeys. Ultimately Alpha helped me to articulate some of those things I was struggling to say. The whole thing was profoundly moving and ultimately life-changing.

If you’ve got questions that need answering, if you feel like there is something missing, if you want to know if there is more to life than ‘this’, I encourage you to sign up, and together we can explore some of those difficult questions.”

Rev Tim

In 2020 the Alpha course in Betley and Madeley was run by Rev. Peter and Rev. John. The meetings began in person before the lockdown, but continued online via (then unfamiliar!) Zoom technology. Iain was one of last year’s group:

“Alpha course here has been really important for me to galvanise and understand my faith.

I found the meetings to be extremely beneficial, I was able to talk to fellow Christians from all backgrounds and learn from their experiences which helped me to understand my own faith...

...Alpha course has increased my understanding of Christianity, allowed me to learn from fellow Christians’ views and experiences and made me feel welcome within the church, which I am new to. I now feel part of a very friendly community and cannot thank the course members enough.”

Iain

BETLEY PRIMARY SCHOOL

Heroic Hedgehogs (Year 3/4)

As in schools up and down the country, there was much excitement on Monday 8th March as all children finally returned to the classroom for the first time since January 4th. The last couple of months have been challenging, but it has been truly amazing to see the amount of determination, perseverance and resilience our children have stored inside. Well done to you all.

To kick-start our return to school, every class at Betley Primary school has taken part in Science Week. This was a whole week dedicated to exciting experiments and investigations with the intention of developing further a love of science.

In Heroic Hedgehogs, we've investigated how to prevent apple pieces from turning brown once cut. We discovered that apple pieces placed in lemonade or lemon juice turn brown much more slowly than those placed in other liquids or left out in the open. This is because citric fruits, such as lemon, contain ascorbic acid, otherwise known as Vitamin C, and this slows down the process of oxidation (which is what causes the apple pieces to go brown).

As well as this, we've created our own self-inflating balloons. We mixed bicarbonate of soda with white vinegar; when these two chemicals mix, carbon dioxide is produced. We used a balloon to capture the carbon dioxide, inflating the balloon in the process.

We've also witnessed water 'walking' and changing colour. We investigated the process of capillary action, the process used by plants to suck up water from the ground. Having placed absorbent kitchen roll in water coloured with dye, we watched the water 'walk' up the paper and drip down into an empty cup below. Even more amazingly, when different colours of water were mixed in the empty cups, new colours were created!

Now that Science Week has drawn to a close, next week we're going to be starting our new class topic: European Adventure!

Nursery Admissions

If your child's fourth birthday is between 1 September 2021 and 31 August 2022 it's time to apply for Nursery. Applications are now open! We would love you to join our school. We have also created a Betley Tour video. Have a look at what we offer:

<https://betley-ce-primary-school.primarysite.media/playlist/nursery-tour>

More information on our Admissions page:

<https://www.betley.staffs.sch.uk/admissions/>



Science Fun across the school



Sam Ray
 Executive Headteacher
www.betley.staffs.sch.uk

READING ZOOM TASTERS

Short Talks For Everyone

Just enter the Zoom Meeting ID: 899 2027 8608 (no passcode required)

HIDDEN ITALY



Presented by Pam Clarke
Saturday 17th April at 11.00am

GARDENING AFTER THE FIRE

The Reopening of Betley Court Gardens



Presented by Su Hurrell
Saturday 15th May at 11.00am

www.tiny.cc/ReadingRoomTasters



SIMPLE CONVERSATIONS ON FOOD

... on April Fool's Day...

It's a seasoning, a symbol, a currency, a habit. It's good and bad but only in the right amount – it's better or worse as you get older and it's 'more' or 'less' too...

What is it?It's **SALT!!**

Come and join us for a fun Zoom conversation on

Thursday 1st April at 2pm

Email me or message for a link to the session

Jo Thomas

Thomas.Johanne@gmail.com

BETLEY AND WRINEHILL W.I.



Dear Members,

I hope you are all staying safe and well. Let's hope our cherry trees will blossom at Betley Court . Perhaps a bit optimistic!

The good news is we might be able to meet in July or August.

The bad news is we need either a President or Treasurer. We cannot function without both. Can you help to keep this branch going?

Best wishes,

Pam Clarke

(01270 820039)

ST. MARGARET'S CHURCH - HOW TO ARRANGE...

Baptisms - Please contact the Parish Office 01782 431455.

Confirmations - Adults and young people who would like to prepare to begin receiving communion are encouraged to speak to one of the clergy about being confirmed.

Weddings - Please contact the Parish Office 01782 431455.

Funerals - Arrangements are made through the funeral director

Visiting - Please let the clergy know of anyone who is ill and who would appreciate a call.

BETLEY TENNIS NEWS

If Covid rules allow the court is expected to re-open on Monday 29th March.

Subscriptions for 2021 are now available

Subscriptions are for 6 or 12 months starting from 1st April. Subscriptions give unlimited use of the court including the use of floodlights to play in the evening. To request a subscription form, email Judy Bettley-Smith judy.bs@btinternet.com .

Subscription Rates

Full Adult	12 months £35	6 months £30
Adult concession*	12 months £25	6 months £20
Junior**	12 months £20	6 months £15

* Adult concessions 17/18 years in full time education

** Junior 10-16 years

Hourly booking

You may book the court on a pay as you go basis for the following fees.

Adults £1.50 per person per hour (Adult concession £1.25 per person per hour)

Junior £0.50 per person per hour (Children up to 10 free if playing with an adult)

Bookings can be made one week ahead. The reservation book is kept in a tin at Beech Wood, Main Rd, Betley (between the Swan and Pool Farm Vets on the other side of the road)

Karen Hardwick





BETLEY READING ZOOM

Why not Zoom into the Reading Room for a chat on Monday, Thursday or Saturday between 11.00 and 11.40am (bring your own coffee)

Just enter the Meeting ID:
775 211 3022 and Passcode: coffee



Thank you Betley for 57kg of food in March despite the lockdown

*Much appreciated at the warehouse
Keep up the good work!*

Current shortages are

Sponge puddings, Small sugar, Long life milk, Washing powder/gel/tablets, Washing up liquid
But any non-perishable food is welcome!

Collection boxes in the porches of the Reading Room and the Church are frequently monitored.

Your contributions are secured and safely transferred to the warehouse.

More information is available from

www.newcastlestaffs.foodbank.org.uk

Kevin Hamer

820704

u3a

Madeley and District u3a is part of a national network whose aim is to bring like minded people together by sharing ideas, interests, adventures and activities. It's a great way to make new friends and any adults are welcome. Most meetings take place during the day and there are more than 30 different interest groups. Some groups have continued to meet successfully via Zoom this last year, but as soon as possible real life activities will resume, beginning with outdoor events.

See the website for more information:

madeleydistrictu3a.Wordpress.com

Chris Hawksley
07771 755307

COUNTRY FOOTPATH WALKS

Please join us for one of our walks – Try one for free and then you can decide to pay our annual subscription of £5.00 (normally due annually in November after the AGM).

Walks are usually on the first Sunday of each month starting at 10:00am and finishing around 12:00 /12:30

Distance around 4 to 5 miles.

For more information, please contact our Chair, Jon, on 07976 814023.

**We hope to begin walks again in May so
look out for more news next month.**

DO YOU NEED PRAYER?



Would you, or someone you know, appreciate a private conversation with clergy and the chance for some personal prayer for yourself or someone you know?

Clergy from St Margaret's and All Saints' churches will be available by phone after the online Sunday services.

Please phone or send a message to Revd. Tim Watson, Revd. John Beswick Pallister or Revd. Pamela Lane to find out who is on duty on a particular Sunday.



BETLEY LOCAL HISTORY SOCIETY

Hello everyone! This Society is for us all, members and non-members alike. As well as listening to Speakers when we are allowed to meet again, we are engaged in keeping alive some of the past history of our village. Our Facebook "Betley Local History Society" page has become very active with old photographs and various queries and comments. We have a new member from Congleton - welcome Pauline, we look forward to meeting you in person.

We hope that you are all enjoying the frequent wonderful articles by Su Hurrell giving us updates of work in the gardens of Betley Court, but also allowing sneak previews of scaffolding and the huge roof job. Recently she showed us the horrific state of the whole of the interior walls, rooms and staircase. How *can* Su, Nigel and Prof Brown have such optimism?! These articles can be seen on Facebook without going through the BLHS page.

Like the Court, we hope to rise again. We hope that we *might* be able to aim for a September Speaker Meeting on the THIRD THURSDAY of September which will be 15th September. We will confirm this later. We hope that the Speaker will be our good friend Laurence Bennion from Old Hall Farm.

We thank Roger and Jenny Johnson who have given us some lighter notice boards which we hope to use for our notices and dates at future meetings. As Spring returns, it is onwards and upwards.

Rhoda Farrington (Sec 01270 820022)

Mavis E Smith (Chair elect)
and Committee members



@BetleyHistory

www.blhs.co.uk

Sanctus, St Mark's Supporting Asylum Seekers and Refugees



Sanitary products and toiletries can be deemed a luxury that is unaffordable for many. Sanctus relies on the generosity of supporters to collect these items for them, through collection boxes in local churches.

St Margaret's is one such church. If you would like to donate, please leave your contribution in the church porch.

www.sanctusstmarks.co.uk

An Easter Egghead Quiz



1. Which British chocolate egg is only supposed to be sold between December and Easter? 500 million are produced each year.
2. How is a hollowed out hard-boiled egg that is then refilled with a mixture made of the yolk and other ingredients such as mayonnaise and mustard known?
3. If you order eggs 'revueltos' how have they been cooked?
4. Which vegetable is part of Eggs Florentine?
5. If you add a fried or poached egg to a Croque Monsieur sandwich, what does it become?
6. Which St Petersburg jewellery house is famous for its valuable designer eggs?
7. What is the Japanese word for 'loveable egg' that gave its name to a toy craze?
8. What type of bird lays the smallest eggs? It is also the smallest bird.
9. Who wrote the children's book *Green Eggs and Ham*?
10. How many marzipan 'eggs' sit on top of a traditional Simnel cake?

Answers on page 22



BETLEY METHODIST CHURCH

We have plenty of choice of prayers, services and events during Holy Week as we Rope Lane Methodists (or any of you) can phone in to Evening prayers at 7pm any evening Monday-Thursday, in addition to St Margaret's programme (see page 6). If it is fine, there will be an outside 8am Service on Easter Day as well as the usual 9.45am and 6pm Services on the phone. Ring me for the contact number if you would like it.

Our Chapels remain closed until 17th May at least.

God bless,

Rhoda Farrington
and Betley Methodists
01270 820022



Betley and District Village Hall Bowling Club

Why not try crown green bowling this year?

We are a club which positively welcomes new members of all ages and abilities. We hope to open to members in April which will be following the British Crown Green Bowling Association guidance and safety measures. If you are interested in becoming a member then please get in touch and we can talk through how this can happen safely. The fee for new members in 2021 is £20.

Wondering where we are?

We are tucked away behind the village hall, the tennis court, and the children's play area. In its lovely village setting, it is now well established with a wide cross section of members. During normal times we have social activities, regular friendly events with other clubs, and opportunities to play in local leagues.

For more information contact -

Rachel Alcock 01270 820136 or email paulrach121@gmail.com

Tony Turner 07721 939501 or email arturner.uk@gmail.com



Community News



Staffordshire Police Contacts

Our neighbourhood policing team (NPT) is a group of local police officers dedicated to serving our community. The team is made up of officers based in our area, supported by additional officers from the wider area.

They work closely with local authorities, community leaders and residents to decide policing priorities for the area. This helps them to find useful, long-term solutions to local problems, while maintaining a wider focus on reducing crime across Staffordshire.

The Police surgeries that were previously held in the Betley Tea Rooms had to be cancelled during the Covid-19 pandemic but you can still contact local police to report crimes, antisocial behaviour or neighbourhood concerns online at <https://www.staffordshire.police.uk/a/your-area/local-policing-team-contact/contact-your-local-policing-team/> or you can contact the control room by phone on 101. For any emergency, continue to use 999.

As the timing of the return of the surgeries is currently uncertain, if you have a general enquiry one of our PCSOs has kindly offered his number and email as a temporary contact, but please remember he isn't always on duty.

PCSO Colin Hodgkinson 07970 635189

Colin.Hodgkinson@staffordshire.pnn.police.uk

Report suspicious emails: If you have received an email which you're not quite sure about, you can report it to the Suspicious Email Reporting Service by forwarding the email to - report@phishing.gov.uk.



Quiz Answers

1. Cadbury's Creme Eggs
2. Devilled Eggs
3. Scrambled
4. Spinach
5. Croque Madame
6. Faberge
7. Tamagotchi
8. Hummingbird
9. Dr Seuss
10. Eleven.




Heat Source

Mechanical Services Limited

*Domestic and Commercial Engineers with 30 Years of Trade Experience
for all your Heating and Plumbing needs*

Including:

- Central Heating Installations*
- All Gas & Oil Works Undertaken*
- Bathroom Installations*
- Boiler Servicing*
- Landlord Certificates*

Plus all emergency call outs

Call Des on **07506 549560**

Email. **heatsource.msl@outlook.com**

*Company Premises: Unit G6 Mucklestone Business Centre, Eccleshell Road,
Mucklestone, Shropshire TF9 4FB*

Going on Holiday?

Let us look after your cat



Laurels Boarding Cattery

*Brookhouse Farm,
Madeley, Nr. Crewe,
Cheshire. CW3 9JJ*

Tel: 01782 751279

Telephone for a brochure



Betley Tea Room

Betley Court Farm, Betley,
CW3 9BH

Closed Mondays

Tuesdays – Fridays & Sundays

Open 10am-4pm

Saturdays

Open 9am-4pm

Please call 01270 820229 for
booking enquires.

Private events catered for also.

OsteopathyWORKS.co.uk

For

- Pain & Injury Management
- Hands on Treatment
- Rehabilitation



Call us on: 01270 886288

Phoenix
Handyman
Services

07957371910
phoenixjohn51@yahoo.co.uk

PHOENIX

KITCHENS
BATHROOMS

JOHN

07957371910



Doddlespool Hall

Elegant • Supported • Living



At home from home...

Caring for our local community

Doddlespool Hall,
Main Road, Crewe. CW3 9AE
Phone: 01270 820700

Email: care@doddlespoolhall.care
Website: www.doddlespoolhall.care



Ben Pointon

Door Specialist

Garage Doors, Industrial Doors and Patio Awnings

17 New Road, Madeley

Nr. Crewe

CW3 9EX

07714 990824

01782 705407

76benpointon@gmail.com



KeeleSU Print & Copy Shop

Your fast, friendly, local print service

Printing | Copying | Binding | Posters
Flyers | Business Cards | Letterheads
Photo Books | Gifts | Paper Banners
Brochures | Wedding Invites & more!

Graphic Design Service

Professional, high quality
and affordable design
custom made for you.



T: 01782 733713 E: su.print@keele.ac.uk

W: keelesu.com/printshop

f keelesuprintshop

Students' Union building, Keele University ST5 5BJ

Open to the public. Registered Charity No. 1137380

C. W. Mottram Funeral Services Ltd

Our Family Helping Yours



Traditional, Green and Eco-Friendly Funerals

Floral Tributes / Catering Arranged

Personal Home Visits – 24 Hour Service

Arranging A Funeral and Funeral Planning Guide brochures available

Contact Conrad Mottram

Tel Audley 01782 720057

07900492692 24Hour

www.cwmottramfunerals.co.uk

e-mail cmottramfunerals@aol.com

Glyn Edwards **GE**

Electrical and Security

Call **GLYN**, your local electrician
 01782 751737 Mobile: 07765 224093
 3 Pastoral Close, Madeley, Crewe CW3 9PU

No call out charges
 100% Reliable Family Business
 Free Estimates and Advice
 Competitive hourly rate

All work carried out to 18th edition
 NIEC Regulations and certified

Call **Glyn** for a
 safe, reliable service



ENVIRO SKIP HIRE

MINI – MIDI – MAXI SKIPS
 Fast, friendly and Reliable Service

01270 820 426

www.enviroskiphire.co.uk



BROOKSIDE PET FOOD

Church Lane, Betley, CW3 9AY

www.brooksidepetfood.co.uk

Tel 01270 260060 or 07973 412217

Animal feeds store for
 all your animal needs.
 Dog, Cat, Horse, Poultry,
 Wild and Caged birds,
 Agricultural Animals and many more
Local deliveries free of charge

Betley Stable Interiors

at

Betley Court Farm CW3 9BH

Bespoke Leather Furniture now offers
 the same high quality in fabric options

*Also made to measure curtains, roman
 blinds, roller blinds, venetian and verticals*

Fabrics, cushions and designer
 wallpaper available

Full Design service on request

Contact Jayne or Mandy on
 01270 820479 or email:
 stableinteriors@btconnect.com

www.stableinteriors.com



Follow us on Facebook!



AlphaDerma

Skin Care
CACI - non surgical
Beauty Therapy

Ruth Walton

Brampton Trees, 10 Queen Street
Newcastle-under-Lyme ST5 1ED

01782 717743
07435 961220

ruthalphaderma@gmail.com



dermalogica[®]
expert

MES Mark Elwell Services Ltd. Heating & Plumbing



Oil Boiler Service Engineer
Oil Boiler Maintenance
Central Heating &
Bathrooms Installed
Worcester Appointed Engineer
Warmflow Appointed Engineer

Mobile:
07767 844037

Email:
elwell.mark56@gmail.com



INSURANCE THAT'S ON YOUR DOORSTEP

Call our office in
Betley on
01270 820121



NFU Mutual
INSURANCE | PENSIONS | INVESTMENTS

Agent of The National Farmers Union Mutual
Insurance Society Limited.

AR Decorating

Private & Commercial

Interior Work
Insurance Work
Free Estimates

Nelson House, Main Rd, Winehill

Call Andy

07967 552931
01270 820123

BLITZ
OVEN CLEANING

Your Local Independent
Professional Oven
Cleaner

All makes and models professionally cleaned
Doors removed and all glass cleaned and
polished

All shelves, racks, fan cover, fan, wall and
roof liners removed and cleaned in my van
mounted purpose made 'heat and treat' dip
tank

Oven cavities scraped, scoured and polished
ALL ovens left in a showroom condition - view
website to see examples.

**We clean Singles, Doubles, Range
Cookers and Aga's**

Call or message today for a fixed quotation
07387 948177

www.blitzovencleaning.co.uk

We clean ovens, so you don't have to

Rooster's Day Nursery

Den Lane, Wrinehill
Nr. Crewe. CW3 8BT

We provide a warm, caring and educational
environment for your child with funded
places for 3 & 4 year olds...

Ofsted registered

Our opening times are:

7.30 a.m. - 6 p.m. Monday to Friday
51 weeks of the year

We run before and after school clubs
for Betley, John Offley and
Meadows primary schools.

You are welcome to visit anytime
at your convenience

For more details phone 01270 820848
And ask for Ruth and Lisa



Grounds Maintenance Solutions

Services available -

Hedge cutting
Ploughing
Combination drilling
Rear discharge spreading
Topping (flail or rotary)
Digger work (1 & 3 tonne)
Compact tractor with flail topper
Post & rail fencing
Farm gates installed
Tractor and driver

Call Brian 07825566677

SWIMMING LESSONS

Thought about swimming lessons?
Classes ranging from Duckling to Bronze,
Silver and Gold based on the ASA National Plan.

Free Taster Sessions available for all levels.

Classes at Wrinehill Mill Farm, Betley on
THURSDAYS and FRIDAYS
from 4pm onwards,
and **SATURDAYS from 9am**
From September **SUNDAYS from 9am.**

Maximum 6 per class so make your booking early.

Children's Parties and Private Hire also available.

To enrol call Jane on **07903 371486**

Our lessons incorporate fun, games and
most importantly your children will learn a life skill.




Board of IRONING
Iron out your time.

Wash, dry or just iron.
Call Denise
07557 967939
Quote over the phone for collection and delivery service to suit.

Based in Wrinehill



Goldmark
Dog Training

Want to have a brilliant family dog?



Learn new skills and have fun with your dog

◆

Daytime classes at Betley Village Hall or have private tuition

◆

Kennel Club Good Citizen Dog Scheme Training

For info or bookings contact Dena Swift

07710 228262
goldmarkdogs@btinternet.com
www.goldmarkdogtraining.co.uk

ROBERT SC FERGUSON
G · A · R · D · E · N · E · R
AND ASSOCIATES
0 7 9 2 6 4 9 8 9 8 1
0 1 2 7 0 6 6 4 7 1 5
robertscferguson@gmail.com



Tell us the date of your Garden Party and we will plan and work with you towards the day and outdoor event

Joseph Edwards & Sons

Funeral Directors

Family Run Undertaker – Established in 1882
Complete Funeral Service - 24 hours

144-146 Crewe Road, Alsager
3 King Street, Kidsgrove

Tel: (01270) 882097
Tel: (01782) 775333

**Less than a 20 minutes
drive from Betley!**



Ranworth Lodge Kennels

Luxury Boarding

Rock Lane, Muckleston. TF9 4DU

T: **01630 672333** | W: ranworthlodgekennels.co.uk



mobile chiropody service



Miss L J Davenport
B.Sc (Hons), M.Ch.S

Home Visits
07989 440083



FLOWERS BY ALISON MOTTRAM

Flowers for all occasions
Local Florist

Weddings - Funerals
Flowers for any occasion

No order too small

Contact Alison
01782 720057
www.cwmottramfunerals.co.uk





Haycock Upholstery



Members of the Association of Master Upholsterers



- ◇ Re-Upholstery ◇
- ◇ Soft Furnishings ◇
- ◇ Repairs ◇
- ◇ Antique Upholstery ◇
- ◇ Replacement Cushions ◇

treverhaycockupholstery.com
 haycockupholstery@yahoo.com
 01782 712155
 Monument Lodge, Manor Rd,
 Madeley, Crewe. CW3 9PS



Levey's Electrics

For all your domestic electrical requirements

- New sockets installed**
- Moving existing sockets**
- Light fitting installation**
- Moving switches / light fittings**
- Electrical safety testing**
- Periodic inspections**
- New consumer unit installation**
- Full and partial house rewires**
- Emergency call outs**
- Competitive prices**

Phone or email Chris for a no obligation quote

**Telephone: 07765480252
01782752205**

email: levey.electrics@gmail.com

Qualified to 18th Edition Electrical Regulations (BS7671)
Part P Building Regulations



L.R.G

LUKE RIMMER GROUNDCARE

- Garden Maintenance
- Tree Surgery
- Hedge Cutting
- Landscaping
- Weed Control
- Clearance Work

- Domestic and Commercial Undertaken
- Fully Insured, Experienced and Local

M: 07712347346 lrinqueries@gmail.com





DOC MARTIN TREE SURGERY

**Professional Local
Tree Specialist**

**Trees of all sizes pruned,
felled or dismantled**

**Hedge trimming and
leaf clearance**

Fully qualified and insured

Call Martin on:

07894 143984

Email:

enquiries@docmartintrees.co.uk

NWPlumbing

SERVICES LTD

38 Northwood Lane
Clayton, Newcastle ST5 4BN

**FOR ALL YOUR PLUMBING NEEDS
INCLUDING:**

- *CENTRAL HEATING INSTALLATIONS
- * BATHROOM INSTALLATIONS
- * ALL GAS WORK UNDERTAKEN
- * EMERGENCY CALL OUTS
- * LANDLORD CERTIFICATES

FOR YOUR LOCAL CORGI REGISTERED
PLUMBING AND HEATING ENGINEER
CALL NICK ON

TEL: 01782 629834

MOBILE: 07834 340992

GAS SAFE NO. 220588

www.nwplumbingservices.co.uk

THE 1:1 DIET

by Cambridge Weight Plan

Want the weight gone?

This is the one.

- **Medical composition scales**
- **No contract or joining fee**
- **Private Consultations**
- **Appointments available**

Angela Grocott

Independent 1:1 Diet Consultant

07899 953090

Find me on facebook: 1:1 Diet with Angela

CARPETS RUGS UPHOLSTERY



CLEANINGSPECIALISTS
CARPET & UPHOLSTERY

Commercial and Domestic
Latest technology
All areas covered
Reliable, Local Business
Fully Insured (NCCA Member)

For a **FREE** quote and quality service
Call Martin on

07834 982097

Or visit our website @

www.h2ocleaning.co.uk

8a Highway Lane, Keele, ST5 5AN





Follow us on Facebook!



Need any building work undertaking?

Just contact Paul, your local builder.

Estimates are not free – they cost a cup of tea!

All building undertaken with a smile.

Contact Paul anytime on 07990 572670.

Local Testimonials Readily Available.

Sandbach Mowers and Repairs

YOUR LOCAL LAWNMOWER SERVICING AND REPAIR SPECIALISTS

- WE SERVICE ALL LAWN MOWERS
- SPARES & REPAIRS FOR ALL MAJOR MAKES
- WE PROVIDE A PICK UP AND DROP OFF SERVICE
- WE ARE BASED IN SANDBACH AND SERVICE THE SURROUNDING AREAS

SANDBACH MOWERS AND REPAIRS

Unit 10, Color Me House Lodge Road, Sandbach, CW11 3HD

✉ sandbachmowersandrepairs@btinternet.com

📞 For A Free Quote & Friendly Advise Please Contact Paul

01270 761408

or 07725 559740  



Absolutely Fabulous hat studio

Ladies Designer Hats and Fascinators to Hire or Buy for all occasions

By appointment only, including weekends and evenings

Contact Debbie Bloor

Ambleside Lodge, Aston, Pipegate, Market Drayton, Shropshire
Tel: 01630 647672
Mobile: 07860 333950



Chartered Health & Safety Practitioners CMIOSH & Acoustic Consultants MIOA

Free initial consultation
Health and Safety Law – requirements

Environmental Noise Assessments (Planning / Industrial).
Sound Insulation Testing Part E. Noise at Work. Health and Safety Policies. Risk Assessments.
On line Safety Training e.g. Fire Safety.

www.sbmsafetysolutions.co.uk
Tel / Fax: 01270 820 533
2 Betley Hall Gardens, Betley, Crewe, CW39BB

HORNE BROTHERS

— Dennis Cartledge —

When caring and understanding is most needed

Local family owned
independent Funeral Director



R. Horne - M. Horne

Contact on the following number:
01782 720719

Golden Charter
Funeral Plans 

Floral tributes and catering - 24 hour personal service

Audley Funeral Home, Ravens Lane, Audley

Telephone: 01782 720719

Email: office@hornebrothers.co.uk www.hornebrothers.co.uk

HAVING A PARTY?

BETLEY VILLAGE HALL
is a GREAT VENUE

Visit our website
www.betleyvillagehall.org.uk
to see the great range of facilities:

A lovely hall with party ambient
lighting, audio, stage, bar
facilities, catering, kitchen,
separate 'break-out' room.
Large car park and play area.

Email:
booking@betleyvillagehall.org.uk
to arrange a visit or booking

Paul Brayford Heating & Plumbing For Quality Workmanship

Gas Safe Registered Engineer

Boiler Change / Services / Repairs
General Plumbing Works
Bathroom Refurbishments

Telephone
07770 820583
01630 673743



534134

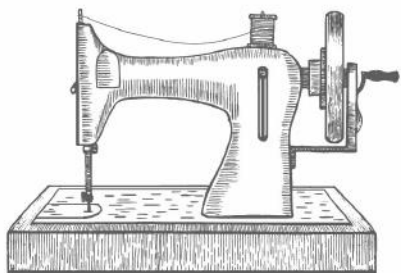
CLARECUTS



On The Move

MOBILE HAIRDRESSER

Tel. 07771624495



Elisabete Barbosa

Experienced dressmaker

All kinds of commisions and alterations undertaken, as well as soft furnishings.

07800 857690

PAINTING

INTERIOR & EXTERIOR

- 25 Years Experience
- Locally Based
- Quality Work
- Good Rates

Call Tony **01270 626365**
 Mobile **07507 205 492**

' Crewe's Liners ' Line-Dance New Classes

Betley Village Hall

Tuesday 1:30pm - 2:45pm

Wednesday 7.15pm - 8.30pm

Pre-bookings only due to Covid

All levels catered for - all genres of music

For more details and to book call Sue on 07761 350527 or email suzyqbell@gmail.com

www.staffordshiretreeservices.co.uk

specialists in tree surgery

surveys • inspections • reports

Domestic, commercial & authority contractors

Felling of Dangerous Trees

- Treework To BS3998 • Consultancy Work
- Surveys & Reports To BS5837
- Stump Removal



ststrees08@gmail.com

www.staffordshiretreesurgeons.co.uk

fully qualified fully insured free estimates



Office: 01782 751369

Mobile: 07752 160139

3 Beck Rd, Madeley, Crewe CW3 9JF



Betley Tots Group

Betley Village Hall
Every Tuesday 9:45 - 11:45

Songs, activities
and a good chat.

Call Katie 07508 150392



The Swan Inn

Main Road,
Betley,
Crewe.
CW3 9AB

01270 820322



A traditional Country Pub, with 4 cask ales.
Graham Ecclestone
and his Staff offer a warm welcome to all.

Function Room with wi-fi and projector
available for Meetings or Parties.

Beyond wealth management.

As your local True Potential Wealth Management Partner I can provide professional advice on areas including:

- Investments
- Retirement Planning
- Protection & Insurance
- Tax Planning
- Mortgages

Contact me today:

Lee Spragg DipFA, CeMAP
Partner

T 07738 120 735

E leespragg@tpllp.com W leespragg.tpllp.com

 **true potential
wealth management** www.tpllp.com

Investments can fluctuate in value and investors may not get the amount back they invest. Tax rules can change at any time. Your home may be repossessed if you do not keep up repayments on a mortgage or any other debt secured on it. Authorised and regulated by the Financial Conduct Authority. FSR number 529810. Registered in England and Wales as a Limited Liability Partnership No OC356611. Lee Spragg is a restricted adviser with True Potential Wealth Management.



Retirement Livery at Balterley Stables

*When the time comes to treat
your horse to a quieter life,
ensure you find the best,
because it's important they
enjoy their retirement years.*

**Full Livery and Grass Retirement
Available**

Call 07771 623922
Email stables@retirementlivery.com

(Line art by tNienjaa)



Follow us on Facebook!



Dog Training and behaviour
Introduction to working dog
training
One to one
or
Group sessions available

Contact: Hannah
Tel: 07760 999 694
hannah@bliashdogtraining.co.uk

AJS GUTTER CLEANING & MAINTENANCE SERVICES

Helping to protect your most important investment... Your home!

Blocked gutters is the most common cause of damp
We offer an annual cleaning service at competitive prices from as little as £40
All rubbish removed from guttering
Downspouts unblocked & flushed
Soffits, fascias & cladding cleaned
Repairs • Gutter erecting
Don't leave it until its to late, ring for your FREE quote

Call James on:
01270 416212 / 07792 978896
www.ajsguttercleaning.uk

Chimney Sweeping 01630 658947

petethesweep@mail.com

Member of
the National
Association
of Chimney
Sweeps



Peter Buckley BSc. Env. (Hons)
14 Derwent Drive
Loggerheads

Shires accountants

- Self-Assessments Tax Returns
- Limited Company Accounts
- Sole Traders
- Construction Industry Scheme CIS
- VAT & Personal Tax
- Capital Gains & Corporation Tax
- Local Accountants
- Family Business Specialists

We do not charge for meetings or general advice & we offer Free Consultations & Fixed Prices

Checkley Lane
Wrinehill
Nr Crewes
CW3 9DA

We work harder for you!

01270 820273

Info@cheshireaccountants.net

Fast
Friendly
Affordable



Covering Cheshire
and Staffordshire

M. J. F.

Carpet and Upholstery Cleaning Service

A family Business with over 30 years experience
Domestic and Commercial

Plus

* Caravans * Fully Insured *

We use the latest equipment

* removal of Dog and Cat hair * * Perfume and Deodorising *
* Carpet and Fabric Protectors * Mattress Cleaning *
Clean carpets last longer and look so much better!

Tel: 01782 638837 / 07950 667202

4 Brackenberrv, Newcastle ST5 9PS

Email: cfinnerty@live.com



NEWCASTLE PLUMBING & HEATING SUPPLIES LTD

Suppling Staffordshire and Cheshire's trade
and DIY for over 30 years.

If you are looking for bathroom inspiration, then visit our showroom @
Alsager. We have quality bathrooms, en-suits and cloakrooms on display
Contact a member of the team who will share their expertise on helping
your dreams become reality.

1A Linley lane, Alsager, Stoke on Trent ST7 2QP

01270 878550 · www.nphsupplies.co.uk



SUPERB CLEANING

Cheshire Areas

Tim Shaw recommended & used by leading
home furnishing retailers since 1997.

www.shawclean.co.uk

Free advice, quotes & fully insured.

07976 559 072

0800 612 8817

- CARPETS
- UPHOLSTERY
- LEATHER
- RUGS
- CURTAINS
- MATTRESSES
- STAIN REMOVAL & PROTECTION
- STONE
- TILE & GROUT
- WOOD
- DRIVEWAY
- PATIOS
- DECKING



Painter
and
Decorator

A.N. HIGGINSON

4 Primrose Dell,
Madeley
Nr. Crewe CW3 9ES

Telephone:
01782 750375



Owens Memorials

Traditional ~ Modern
Individual

for Cemetery and Churchyard
covering all districts

Tel: 01630 654135

for help and advice
Quote Ref. P.M. 10

21 Queen Street, Market Drayton



Your local shop for local produce

Fresh meat
Dairy and eggs
Fruit and vegetables
Groceries
Wines and spirits
Beers and cider

Freshly made sandwiches
Bread and baked goods
Sweets and snacks
Newspapers and
magazines
Soft drinks
Cards and stationery
& much, much more

Opening Hours

Mon - Fri
8:00am to 6:00pm
Sat
8:00am to 5:00pm
Sun
8:00am to 12:00
noon

Caroline and Paul Beardsmore

Tel: 01270 820544

Main Road, Betley, CW3 9AB

ELMSIDE NURSERIES

Landscape Gardeners
Planting Schemes with own grown
quality plants and shrubs
and garden maintenance

Hand Made Flower and Holly Wreaths

Pet Food and Wild Bird Food

Coal, Smokeless Coal, Logs and Sticks

Phone: 01270 820352

Let us know your requirements



Move Home Faster

- Excellent value property conveyancing
- Instant Home Valuations
- EPCs and Floorplans
- Mortgages

Get an instant quote NOW

For your Free Conveyancing
Quote, contact us on

www.movehomefaster.co.uk
Telephone - 01270 263 263

Move Home Faster Limited,
Lea House, 5 Middlewich Road,
Sandbach, Cheshire. CW11 1XR.



small pets



01270 820007 | Main Road, Betley



horses

Your animal's health is our priority

**Digital x-ray, ultrasound & endoscopy, same day results
for blood tests from our in house lab**

Friendly and professional service
Vaccinations & boosters
Microchipping & health checks
Fully equipped operating theatre & hospitalisation facilities
Laparoscopic / keyhole surgery
Airway surgery
Advanced soft tissue and orthopaedic surgery
Fully equipped mobile service for horses
Acupuncture

*Modern Diagnostics
Full Surgical Facilities
Keyhole Surgery*



poolfarmvets.co.uk

RCVS accredited small animal
and equine practice



01270 820007

Main Road, Betley, Nr Crewe, Cheshire CW3 9AB

