

Headlight Removal & Installation: BMW E90 (3 Series)

DISCLAIMER

Buyer assumes any and all risk and liability from the installation and use of this product. Seller, author, or any of their affiliates assume no liability for injury, loss, incidental or consequential damages deriving from installation and/or use of this product.

Tools Required:

- 8mm or 5/16" socket
- 3/8" or 1/4" socket extension (6" length)
- 3/8" or 1/4" drive socket wrench
- Flathead Screwdriver
- Phillips Screwdriver
- Star-shaped driver



Step 1: Remove *two torx screws* that are mounted on top of your headlight's housing using a Star-shaped torx driver.



Step 2: Next, unclip *four torx screws* on top of the Bumper (above the front kidney grille)



Step 3: You must also *unclip* and *unscrew* two “*clip #1 in the photo / torx screw #2 in the photo*” from each tire wells and a clip remover. The clip and screw are found near the outer-edge of each front-side tire wells.

Step 4: After you have removed the two screws from *Step 3*, then you must carefully pull back the Mud-guard (shown as *Figure 1* below; between fender and bumper) to reveal the *two torx screws* attached to the Bumper (shown as *Figure 2* below). Locate these screws and unscrew them.

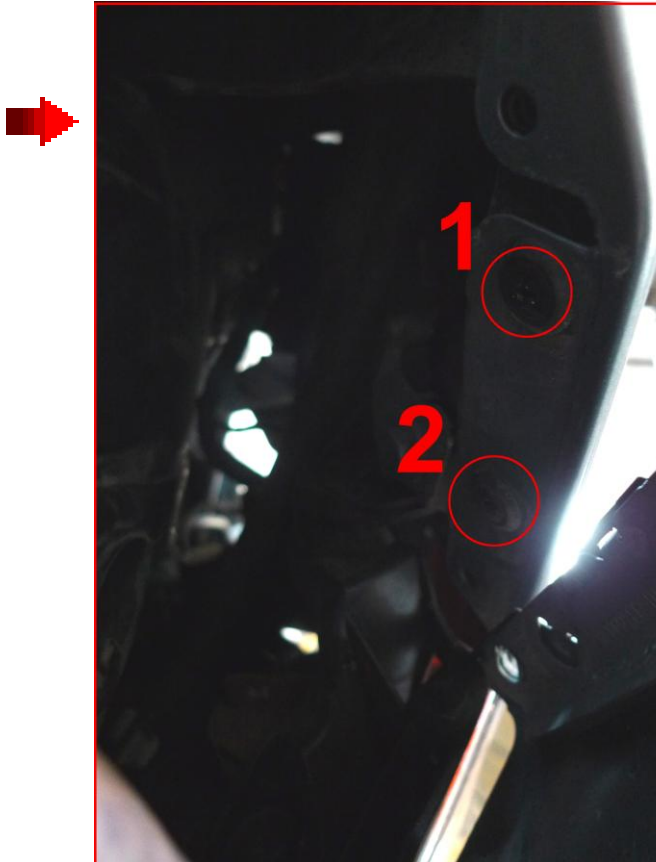
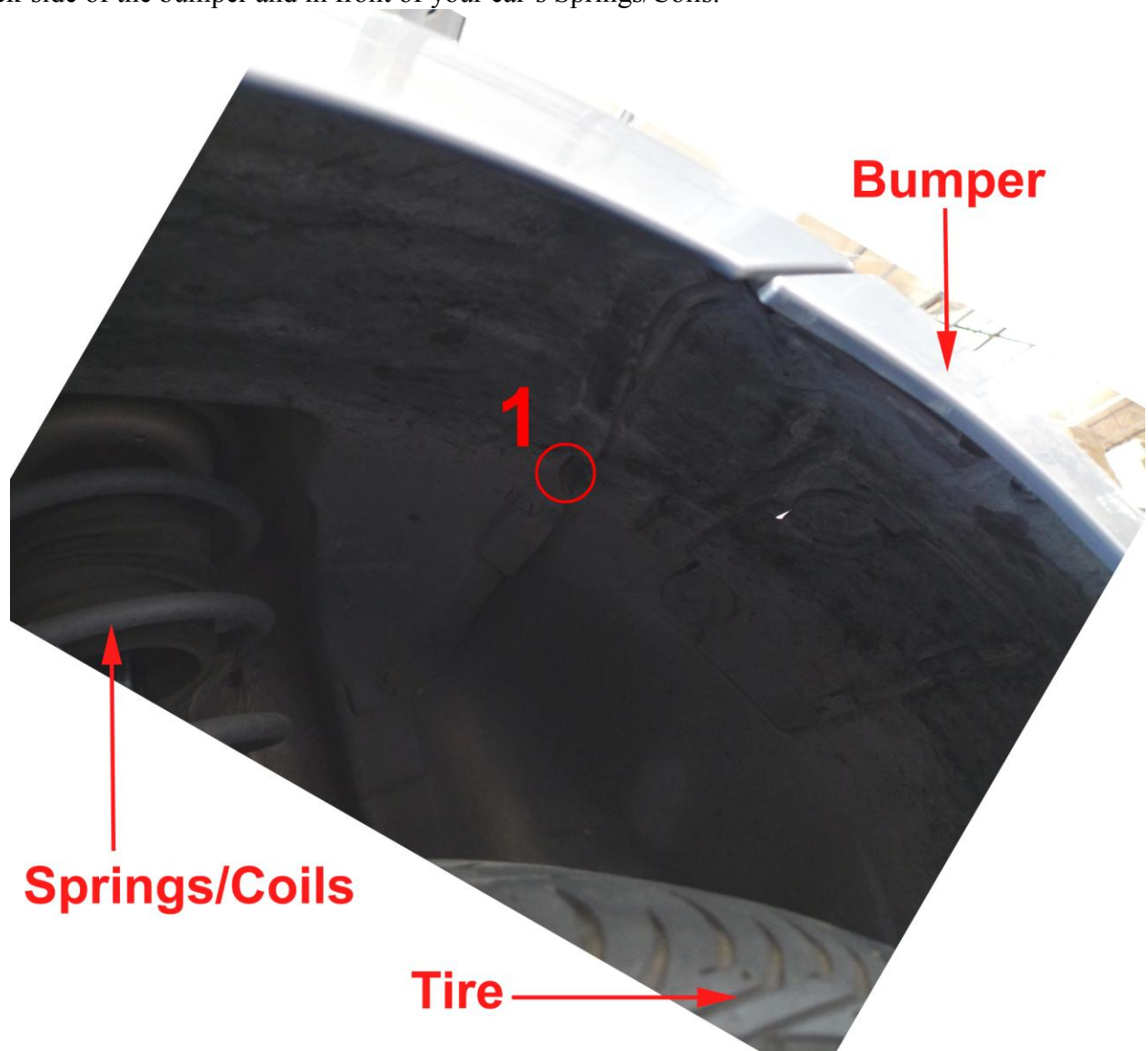


Figure 2

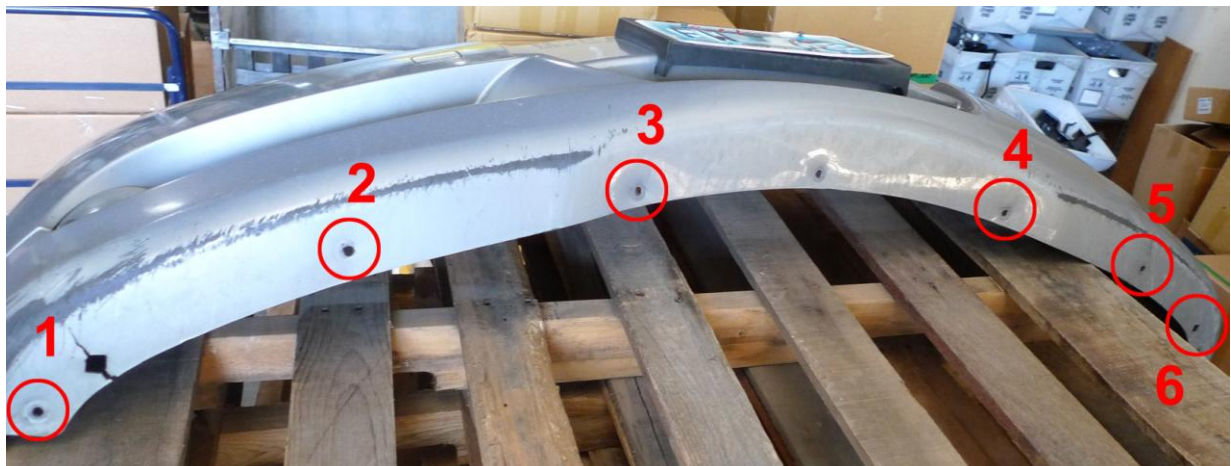


Figure 1

Step 5: There is an additional 8mm *screw on each side* (numbered 1 in the picture below) you need to *unscrew* before moving on to the next step. The screw can be found deeper inside the tire well. It should be situated on the back-side of the bumper and in front of your car's Springs/Coils.



Step 6: There are *six 8mm screws* you must *unscrew* before moving on to the next step. The six screws are situated underneath the Bumper. The photo to the left shows where the screws would have been after bumper removal. **Please do not forget to remove screws under the bumper, before continuing on to the next step.*



Step 7: Next, you must *pull-out and unclip* the **Headlight washer caps**. As shown below, there are *two* **Headlight washer caps** under each Headlight on your car's front Bumper. Very carefully using your *Flathead Screwdriver*, pry open the square-like cap and carefully pull-out the plastic hinge. Once you have pulled-out the plastic hinge (just enough so that you may unclip it) go ahead and unclip the **Headlight washer caps**. Be careful not to mix the **Headlight washer caps**, know which washer belongs to which side.



Step 8: After you have unclipped the **Headlight washer caps**, you may then remove the Bumper. Starting from one side of your tire-well, carefully work your way around your bumper to the opposite tire-well side by gently pulling your bumper away from your car frame.

**Please make sure you have taken off all of the necessary screws before removing the Bumper.*

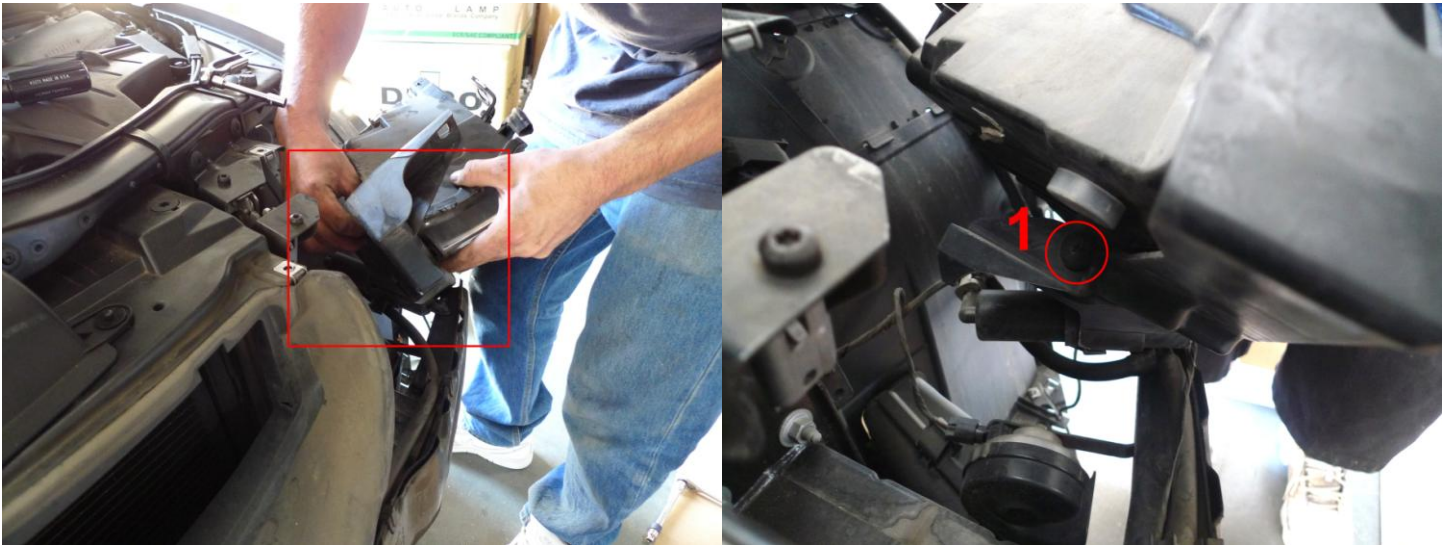
**Make sure to place the bumper somewhere safe and away from your work-space.*

Step 9: Once the Bumper has been removed and placed somewhere safe, you must unscrew *two screws* (numbered 1 and 2 in **Figure 3** below) from the front-side grille using a Phillips screwdriver.



Figure 3

Step 10: After you have removed the screws from *Step 9*, you must try and see if the Headlight housing can be moved. Please note that there is *one more screw* (numbered 1 in the example below) that needs to be unscrewed before fully detaching the Headlight housing from the car. The torx screw can be found at the base of the Headlight's housing.



Step 11: Once you have unscrewed the screw on the base of the Headlight's housing, you must *un-plug* the Headlight's *wiring adapter*. The wiring adapter can be found situated in the back of the Headlight's housing. After you have unplugged the wiring adapter, you will be able to remove the Headlight and its housing.



Step 12: After you have successfully removed your old Headlights, you may install your newly purchased Headlights. Please follow from **Step 11** to **Step 1** (backwards) to ensure you have fitted and screwed-on the correct amount of screws needed for the installation.



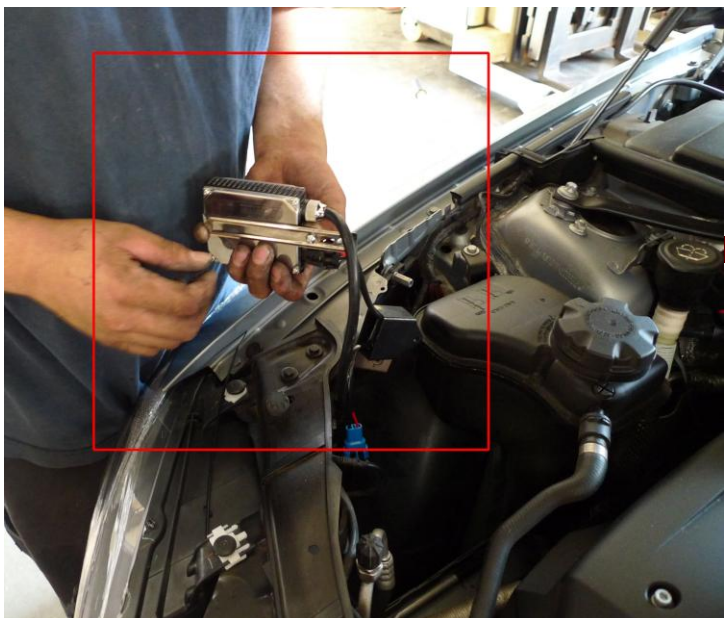
Example 4

****Step 13 & 14 applies only for “HID” Headlights. This is an optional upgrade, if you do not have HID Headlights then please skip to step 15. ****

Your newly purchased Headlights will have the option to come with a “HID Ballast” (numbered 1 in example 4 above). Make sure to pull the HID Ballast through the Headlight’s mounting bracket, before you mount your new Headlights (numbered 2 in example 4 above).

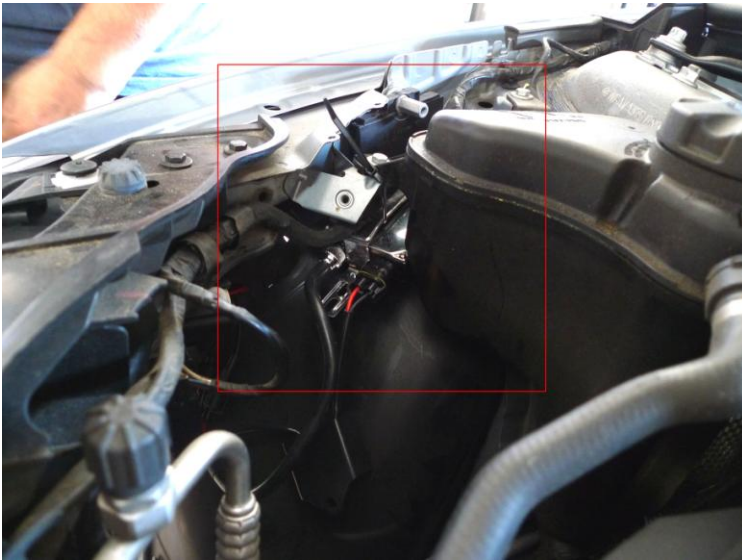
Step 13: Once you have secured your newly purchased Headlights onto its mounting bracket, you must prep to secure your HID Ballast also (shown in the example to the right).

- You must locate the *HID Ballast mounting bracket* (as shown in the example below), which was originally found from your recently purchased Headlight box.
- After you have located the *HID Ballast mounting bracket* you must secure it by screwing in all the necessary screws on it.



Step 14: After you secure by screwing in all the necessary screws on the *HID Ballast mounting bracket*, you must loop a “Zip-Tie” through the *HID Ballast mounting bracket* so that you may secure it to your car. The *HID Ballast* must be seated on a metal surface not plastic. This is because the *HID Ballast* will get hot whenever the Headlights are in use.

- The *HID Ballast mounting bracket* should be seated on the tire-well’s inward metal frame.
- Once you have correctly seated the *HID Ballast mounting bracket*, you must “Zip-Tie” the *HID Ballast mounting bracket* to the nearest metal hinge (be careful not to zip-tie the mounting bracket to any wiring or hosing of the engine compartment).
- After you have completed securing your *HID Ballast mounting bracket*, you may cut any excess Zip-Tie that is protruding out of the engine compartment.
- Repeat **Step 14** for both sets of *HID Ballast mounting bracket* on each side.



=====END of HID Installation=====

Step 15: Once you have properly secured your newly purchased “Headlights & *HID Ballast mounting bracket*” to your car, you may now test your Headlights.

- If you have set the Headlight dial to any other setting than “Position 0” (between Auto & Parking lights), switch it to “Position 0.” Your headlights should be off.
- Next, switch it to “Position 1,” also known as Parking lights, to see if your “day-time running lights” should be visible (it is the light nearest to the car’s grille).
- Lastly, switch the dial to “Position 2” to see if your “low beam light” is functioning.

Step 16: Enjoy your new Headlights!



