



# Health Net for CalPERS

2021 Open Enrollment

Health Net of California, Inc. (Health Net)

A large decorative graphic at the bottom of the page, consisting of a teal-to-green gradient shape that curves upwards from left to right, resembling a stylized wave or a rising curve.

*Coverage for  
every stage of life™*

# Explore Your 2021 Health Net Choices!



Whether you're new to Health Net, or coming back to us for 2021, we're here to provide useful information about Health Net open enrollment.

- **Choose** the right Health Net plan for you and your family.
- **Find** local doctors in the SmartCare HMO and Salud HMO y Más networks.
- **Access** wellness and specialty programs, exclusively for CalPERS members.
- **Use** our custom website and social media tools to help manage your health.
- **Earn** rewards for improving your health!



# Why Choose Health Net?



During this year's open enrollment, please consider this:

- In creating our plan choices for CalPERS for 2021, we began with our greatest strength – **delivering affordable HMO plans throughout California.**
- We believe you deserve reliable health coverage from a local company that understands your needs.
- For over 40 years, Health Net has supported Californians through various stages of life, and that's what we continue to do.
- We work to make a positive difference in the lives of the people we serve.



# Health Care for the Way You Live



## Two Health Net plan options

**1 SmartCare HMO:** SmartCare gives you access to an established, local provider network that connects you to respected, high-quality doctors, provider groups and hospitals.

**2 Salud HMO y Más:** A community-centered, Latino-focused and budget-friendly plan. (Includes cross-border physician access to SIMNSA in Mexico.)



# SmartCare HMO and Salud HMO y Más Network



### SUMMARY OF BENEFITS FOR EACH PLAN

Benefits <sup>2</sup>	Salud HMO y Más	SmartCare HMO
Preventive care office visits, including well-woman exams	\$0	\$0
Doctor office visits	\$15 (when using either the Health Net or SIMNSA networks)	\$15
Specialist office visits	\$15 (when using either the Health Net or SIMNSA networks)	\$15
Vision exam for refractive eye exam	\$0	\$0
X-ray / Laboratory procedures	\$0	\$0
MinuteClinic visits	\$15	\$15
Prenatal and postnatal office visits	\$0	\$0
Hospitalization	\$0	\$0
Urgent care	\$15	\$15
Emergency care	\$50	\$50
Chiropractic / Acupuncture <sup>3</sup>	\$15 / 20 visits max.	\$15 / 20 visits max.



<sup>2</sup>This chart is a summary of benefits only. All benefits are subject to the definitions, limitations and exclusions set forth in the Evidence of Coverage (EOC) document. Basic members are encouraged to review this document before making their final decision.

<sup>3</sup>Combined maximum of 20 visits per calendar year. Services administered by American Specialty Health Plans, Inc. (ASH).

# Health and Wellness with Heart and Soul



## **A bridge to healthy actions**

The Decision Power<sup>®</sup>: Health & Wellness program gives you personalized tools along with the support and confidence to take action for positive, lasting health changes. Highlights include:

- Health Coaching program
- Quit For Life tobacco cessation
- Health Risk Questionnaire (HRQ)

# More Ways to Access Care



- **Welvie (surgery decision support)** – Welvie helps you decide on, prepare for and recover from surgery. Complete the first 3 modules of the program and a brief survey, and you'll receive a **\$25 gift card**.



- **Omada** (proactive diabetes prevention) – Through Omada, you'll gain access to all you need to lose weight and reduce your odds of developing type 2 diabetes and heart disease.



- **MinuteClinic** – Convenient walk-in medical service in select locations (generally located inside CVS/pharmacy stores).



- **Nurse Advice Line** – Our toll-free 24/7 nurse line gives you immediate access to clinical support for everyday health issues and questions.



- **Health Net Mobile** – Connect to your HealthNet.com account on the go.



# We Reward Preventive Health



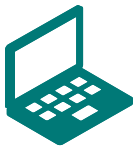
When you take action to improve your health – We love it! That’s why we reward you for taking preventive steps to make healthy choices and changes to your lifestyle.

Reward incentives	Programs	Join Salud HMO y Más or SmartCare HMO, then:
	1. Smoking/Tobacco cessation <b>OR</b> 2. Health Coaching	Choose one program option 1. Complete 4 live calls with your Quit Coach in the Quit For Life tobacco cessation program, or 2. Complete 1 live call per month during the 6-month Health Coaching program as well as an evaluation call. You can enroll in both programs; only one \$100 gift card is available per calendar year.
	Health Risk Questionnaire (HRQ)	Take the HRQ and review the report with your doctor. Then complete the PCP form online – It really is just that easy! One \$50 gift card is awarded in a calendar year.
	Welvie (decide on or prepare for surgery)	If you’re trying to decide on surgery, you can register and log in to <a href="http://www.healthnet.com/calpers">www.healthnet.com/calpers</a> , then go to the Welvie website. Get help and support while making your surgical decision. Complete the first 3 modules of the Welvie surgery decision support program and a brief survey, and Welvie will send you a \$25 gift card.

# Get More Done Online at HealthNet.com/calpers



As a registered member of the website, you'll have 24/7 access to the user-friendly tools and health information you need most. Here's just a sample of all you can do:



## What you can do online

**Get your benefit details** and copayments, *Evidence of Coverage* (EOC) or *Summary of Benefits and Coverage* (SBC).

**Find a doctor**, get ID cards and forms, manage your account details, and view medical treatment policies.

**Get valuable discounts** on health-related services and products. Plus, use our provider comparison tools and treatment cost estimator.

**Decision Power:** Fill out a Health Risk Questionnaire (HRQ), participate in health promotion programs, track your health, and get guidance and support 24 hours a day.

# Nurse Advice Line



- Available 24/7
- Licensed registered clinicians
- Immediate triage
- Timely intervention
- Telephonic access
- Provides triage support based on clinical guidelines

## Benefits

- Prevent unnecessary office/ER visits
- Reinforce treatment plans
- Empower participants
- Ability to immediately address clinical questions
- Directs members to appropriate level of care

# How to Reach Us



**Dedicated Customer Contact Center  
for CalPERS:**

- **1-888-926-4921**
- **TTY: 711**

**Dedicated website:**

**[www.healthnet.com/calpers](http://www.healthnet.com/calpers)**

# Q&A



Thank you

