

HEAVY HAUL TRAILER PARTS GUIDE

ATRO

POLYURETHANE • SOLUTIONS

POLYURETHANE PARTS | SOLUTIONS FOR HEAVY TRAILERS



ATRO PARTS

(800) 325-6114

ENGINEERED | DURABLE | RELIABLE

ATROBUSHING.COM

MANUFACTURED IN ST. CLAIR, MISSOURI | U.S.A.

ATRO DOMESTIC WARRANTY POLICY

ATRO products are covered by a **3-YEAR PARTS WARRANTY** with the following exceptions:

Small eye torque rods (2" ID)		2 year
LP50 series for Hendrickson HN/Haulmaax		1 year
Equalizer beams		1 year
Installation tools		no warranty

ATRO will replace defective product at no charge. Failure modes include polyurethane to metal debonding, loose fit of internal components or obvious signs of wear that will lead to premature failure under normal use.

Warranty is void if product condition indicates overloading or improper application. In addition, **MIXING ATRO PRODUCTS WITH RUBBER OR COMPETITIVE POLYURETHANE PRODUCTS WITHIN THE SAME APPLICATION VOIDS ALL WARRANTY.**

ATRO also offers a 1 year labor warranty provided the product is installed entirely onto the vehicle by an authorized ATRO installer, and that all ATRO products are used throughout the entire vehicle application. ATRO will reimburse labor charges to authorized distributors or installers at 75% of their published labor rates.

To file a warranty claim:

- 1) Please call ATRO customer service (800-325-6114) for approval and to obtain an RMA#.
- 2) Return product within 30 days along with a copy of the invoice or work order of the original installation to confirm the date of installation and ATRO products installed. Please reference the RMA#. The RMA will expire in 30 days.
- 3) The product, invoice/work order and RMA# should be returned to ATRO, 6 Bolte Lane, St. Clair MO 63077, ATTN: Warranty, freight prepaid, for inspection.

Table of Contents

Categorized Listing

Benson Trailer	1	Hutchens	16	Silver Eagle	29
Binkley	1	Hyster	19	Simplex	30
Cambria	1	James King	19	Spicer	30
Chalmers	1	Jost International	20	Stoughton	31
Columbia	4	Kentucky Trailer	20	Thermo King	32
Cozad Trailer	4	McNeilus	21	Trailmobile	33
Cush	4	Meritor	21	Transpro	34
Dana	5	Neway	22	Utility Trailer	35
Fontaine	5	Page	24	Van Raden	36
Fruehauf	7	Peerless	24	Vanguard National	37
General Trailer	8	Premier	25	Wabash	37
Great Dane	9	Reliance	27	Watson & Chalin	37
Heil	11	Reyco	27	Western Unit	39
Hendrickson Trailer	11	Ridewell	29	Miscellaneous	39
Holland	13	Rockwell	29		

For fleet owners and long haul truckers, your trailer is your life blood. And keeping it on the road is critical. Whether it's maintaining your trailer's suspension system, fifth wheel or bumpers, ATRO features a long list of polyurethane parts that exceed the performance and life of OE rubber or other polyurethane replacement parts. This includes wear pads, spring axle pads, spring end pads, cast equalizer beams and bushings, trunnion bushings, severe duty bushings, pivot bushings, drawbar eye bushings, eye bushings, spring end bushings, hinge bushings, Air Ride bushings, trailing arm bushings, walking beam bushings, pivot arm bushings, shock bushings, drop axle bushings, control arm bushings, spring pads, spring end boots, reach cradles, vibration mounts, bump stops, axle wrappers and axle pads.

ATRO's trailer bumpers feature long-life, shock-absorbing polyurethane that significantly outperform and outlast OE rubber and other generic polyurethane bumpers. For example, in testing of ATRO's polyurethane bumper, it was still functioning after 250,000 cycles where the OE rubber bumper failed at just 16, 520 cycles. The same results we see in our test labs are realized in the field every day, resulting in less downtime and a reduction in cost.

Full kits with hardware and multiple parts to completely service your trailer suspensions are also available. And with ATRO's industry-leading Three Year Warranty, you can count on that part like you count on your trailer.

Benson Trailer

Other

BP99-65182 Bumper

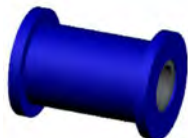


OEM Part#	Length	Height	Width	Misc# Dimensions	Qty per Vehicle
B52641	6 1/4"	3 1/2"	2 1/2"	Bolt Hole: 1/2" Bolt Holes: 3 3/4" c-c	2

Binkley

Torque Rod

PL1118 Torque Rod Bushing



OEM Part#	Application	ID	Large OD	Small OD	Length
09729-01	Duralite 9000 Series Trailer Four Spring	7/8"	2 5/16"	1 3/4"	3 1/8"

UB30000 Torque Rod Bushing



OEM Part#	Application	ID	OD	Length
09729-01	Duralite 9000 Series Trailer Four Spring	7/8"	1 3/4"	3"

Cambria

Suspension

PL1050 Spring Eye Bushing (set of 2)



OEM Part#	Application	ID	OD	Length
R1011-AC	TSA Spring Suspension	7/8"	1 1/2"	2 3/4"

Chalmers

Suspension

HW19-29200 Bolt Kit Type "0" Joint



OEM Part#	Application	OD	Length	Qty per Vehicle
K880230	300, 500, 700 Series	5/8" Bolt	3 1/2" Bolt	16

HW19-29201 Bolt Kit Type "1" Joint



OEM Part#	Application	OD	Length	Qty per Vehicle
HDW379 locknut	300, 500, 700 Series	5/8" Bolt	5" Bolt	16
HDW381 bolt	300, 500, 700 Series	5/8" Bolt	5" Bolt	16
K880640	300, 500, 700 Series	5/8" Bolt	5" Bolt	16

Chalmers

Suspension

HW19-29202 Bolt Kit Type "2" Joint



OEM Part#	Application	OD	Length	Qty per Vehicle
HDW379 locknut	300, 500, 700 Series	5/8" Bolt	5 1/2" Bolt	16
HDW382 bolt	300, 500, 700 Series	5/8" Bolt	5 1/2" Bolt	16
K880231	300, 500, 700 Series	5/8" Bolt	5 1/2" Bolt	16

LP19-24002 Load Spring



OEM Part#	Application	ID	OD	Height	Qty per Vehicle
15002	300, 500, 700 Series	2"	9 1/2"	8"	2

LP19-24015 Load Spring



OEM Part#	Application	ID	OD	Height	Qty per Vehicle
15015	300, 500, 700 Series	2"	8 1/2"	8"	2

LP19-24026 Load Spring



OEM Part#	Application	ID	OD	Height	Qty per Vehicle
15026	300, 500, 700 Series	2"	10 3/4"	8"	2

MS19-29002 Spigot Cap, Type 0



OEM Part#	Application	ID	OD	Qty per Vehicle
260002	300, 500, 700 Series	5/8" Bolt	3 3/4"	16

MS19-29028 Restrictor Can, Standard



OEM Part#	Application	OD	Height	Qty per Vehicle
373020	300, 500, 700 Series	12 5/8"	4 7/16"	2
373028	300, 500, 700 Series	12 5/8"	4 7/16"	2

MS19-29029 Restrictor Can, High Stability



OEM Part#	Application	OD	Height	Qty per Vehicle
373021	300, 500, 700 Series	11 5/8"	5 3/16"	2
373029	300, 500, 700 Series	11 5/8"	5 3/16"	2

Chalmers

Suspension

MS19-29055 Spigot Cap, Type 2



OEM Part#	Application	ID	OD	Qty per Vehicle
800055	300, 500, 700 Series	5/8" Bolt	4 1/2"	16

MS19-29201 Spigot Cap, Type 1



OEM Part#	Application	ID	OD	Qty per Vehicle
800201	300, 500, 700 Series	5/8" Bolt	4"	16

Torque Rod

PL1046 Torque Rod Bushing



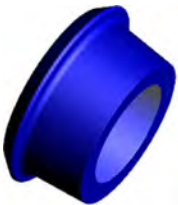
OEM Part#	Application	ID	Large OD	Small OD	Length	Qty per Vehicle
800010	300, 500, 700 Series	2 9/16"	4 5/16"	3 9/16"	2 1/8"	32

PL1047 Torque Rod Bushing



OEM Part#	Application	ID	Large OD	Small OD	Length
22128	300, 500, 700 Series	2 7/16"	3 5/8"	3 1/4"	1 15/16"

PL1049 Torque Rod Bushing



OEM Part#	Application	ID	Large OD	Small OD	Length
800009	300, 500, 700 Series	2 1/2"	4 9/16"	3 5/8"	2 1/8"

TH19-22010 Torque Rod Bushing



OEM Part#	Application	ID	Large OD	Small OD	Length
800010	300, 500, 700 Series	2 9/16"	4 1/4"	3 9/16"	4 1/8"

TH19-22128 Torque Rod Bushing



OEM Part#	Application	ID	Large OD	Small OD	Length
22128	300, 500, 700 Series	2 3/8"	3 11/16"	3 1/8"	3 3/4"

Chalmers

Torque Rod

TH19-22129 Torque Rod Bushing-Oversized



OEM Part#	Application	ID	Large OD	Small OD	Length
22129	300, 500, 700 Series	2 3/8"	3 11/16"	3 3/16"	3 3/4"

Columbia

Suspension

PL1100 Air Ride Bushing



OEM Part#	ID	OD	Length
COLLB1	4"	5 1/4"	10 3/4"

Cozad Trailer

Suspension

PL1178 Trunnion Bushing



OEM Part#	ID	OD	Length
	4"	5"	14"

TN99-31490 Trunnion Bushing



OEM Part#	ID	OD	Length	Qty per Vehicle
30490	3 1/2"	4 1/2"	5.7"	40

Cush

Suspension

PB50-36364 Pivot Bushing, Narrow



OEM Part#	Application	ID	OD	Width	Install Tool	Qty per Vehicle
C3511-70	AAT23K, -25K, -30K, AANT23K, AAEDT30K, AAL23K, -25K, -30K, AANLS20K	1 1/4"	5 1/2"	3 5/8"	PT50-59736	2/axle

Dana

Suspension

PL1095 Spring End Pad



OEM Part#	Application	Length	Height	Width
L1337	26/36 Series Suspensions	5 1/2"	3/4"	1 3/4"

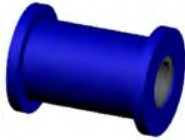
Torque Rod

PL1115 Torque Rod Bushing



OEM Part#	Application	ID	Large OD	Small OD	Length	Misc# Dimensions
L1132	26/36/55 Series Suspensions	1 1/16"	2 5/16"	1 13/16"	2 11/16"	For 1" bolt

PL1118 Torque Rod Bushing



OEM Part#	Application	ID	Large OD	Small OD	Length
L1032	62/68 Series	7/8"	2 5/16"	1 3/4"	3 1/8"

TH83-22302 Torque Rod Bushing Kit



OEM Part#
L1032 bushing

UB30000 Torque Rod Bushing



OEM Part#	Application	ID	OD	Length
L1032	62/68 Series	7/8"	1 3/4"	3"

Fontaine

Other

BP99-34408 Trailer Bumper



OEM Part#	Length	Height	Width	Misc# Dimensions	Qty per Vehicle
50407007	12"	2"	2"	Bolt Hole: 1/2" Bolt Holes: 4 1/2" c-c (3)	2

BP99-36040 Trailer Bumper



OEM Part#	Length	Height	Width	Misc# Dimensions	Qty per Vehicle
B552641	7"	1 3/4"	1 15/16"	Bolt Hole: 3/8" Bolt Holes: 4 1/2" c-c	2 or 4

FW99-32109 5th Wheel Bushing (set of 2)



OEM Part#	Application	ID	Length	Qty per Vehicle
BSH-109-L	ATB; MTB; LWS Series Fifth Wheel	1 1/4"	2 3/4"	1
BSH-LWS-L	ATB; MTB; LWS Series Fifth Wheel	1 1/4"	2 3/4"	1

FW99-32172 5th Wheel Bushing (set of 2)



OEM Part#	Application	ID	Length	Qty per Vehicle
BSH-172-U	ATB; MTB; LWS Series Fifth Wheel	1 1/4"	2 3/8"	1

FW99-32175 5th Wheel Bushing Kit



OEM Part#	Application	Bushing A	Bushing B
BSH-109-L	ATB, MTB, LWS Series Fifth Wheel	FW99-32109	FW99-32172
BSH-172-U		FW99-32109	FW99-32172
BSH-LWS-L		FW99-32109	FW99-32172

FW99-32191 Foot Pin Repair Kit



OEM Part#	Application	Bushing A	Bushing B	Qty per Vehicle
KITPIN191	6000/7000/7000CC/H50 92/X5092/3000 Fifth Wheels	PL1002	PL1002	1

FW99-32300 5th Wheel Bushing Kit



OEM Part#	Application	Bushing A	Qty per Vehicle
BSH-3000 bushing only	3000 Series	FW99-32301	1
KIT-PIN-3000	3000 Series	FW99-32301	1

FW99-32301 5th Wheel Bushing



OEM Part#	Application	ID	OD	Length	Qty per Vehicle
BSH-3000	3000 Series	1 9/32"	2 1/8" x 2 3/8" Oval	3 5/8"	2

Fontaine

Other

FW99-32LLB Foot Pin Repair Kit



OEM Part#	Application	Bushing A	Bushing B	Qty per Vehicle
KITPINLLB	TPL6000, TPL7000< TPL7000C Series	FW99-32109	FW99-32172	1

PL1002 5th Wheel Bushing (set of 2)



OEM Part#	ID	OD	Length
BSH-150	1 1/4"	3 15/16"	2 1/4"

Fruehauf

Suspension

EQ47-35900 Equalizer Bushing Kit



OEM Part#	Application	Length	Misc# Dimensions
UXA-000004-900	F Series and J2 Series Trailer Suspension	8.79"	Bolt OD: 2"

PB57-21139 Pivot Bushing



OEM Part#	ID	OD	Length
MNW900081395	1 1/8"	3 1/2"	5 1/4"

PL1004 Trunnion Bushing



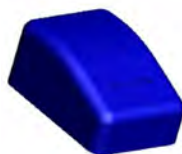
OEM Part#	Application	ID	OD	Length
UXA-000160	M-2 Trailer Single Point; D-2	3 15/16"	4 15/16"	8 3/8"
UXA-000160SP1	M-2 Trailer Single Point; D-2	3 15/16"	4 15/16"	8 3/8"
UXA-0160	M-2 Trailer Single Point; D-2	3 15/16"	4 15/16"	8 3/8"

PL1005 Spring Pad



OEM Part#	Application	Length	Height	Width	Qty per Vehicle
UCD-005635001	M-2 Trailer Single Point; D-2	7 9/16"	1"	4 5/8"	4
UCD-5635-001	M-2 Trailer Single Point; D-2	7 9/16"	1"	4 5/8"	4

PL1043 Spring End Pad



OEM Part#	Application	Length	Height	Width	Misc# Dimensions
365123	TRA3612 / TRA3613 RR55 Tandem	5 1/2"	2 11/16"	4 1/16"	Short Length: 1 9/16"

Fruehauf

Suspension

PL1085 Equalizer Bushing



OEM Part#	Application	ID	Large OD	Small OD	Length
UXA-000004	T-1 Cargo Care; F / J Series	2"	3 1/2"	2 11/16"	4 3/8"

Torque Rod

PL1084 Torque Rod Bushing



OEM Part#	Application	ID	Large OD	Small OD	Length
UXA-000011	NT-2 / NT-2W; Pro Trac; F-2 Trailer Four Spring; NF-2 Pro-Trac Trailer Spring; J / W Series	1 1/4"	2 1/4"	1 13/16"	2 5/16"

TH47-37900 Torque Rod Bushing Kit



OEM Part#	Application	Length	Misc# Dimensions
UXA-000011900	F Series; J2 Series; NF2 Series; NT-2/NT-2W Pro-Trac Trailer Suspensions	4 1/2"	Bolt: 1.24"

TR47-41026 Torque Rod



OEM Part#	Application	Length	Bushing A	Bushing B
FCF-008248004	NT Trailer Suspension	32 1/2" c-c	TH47-33026	TH47-33026

TR47-41028 Torque Rod



OEM Part#	Application	Length	Bushing A	Bushing B	Qty per Vehicle
FCF-008248006	NT; NT-2/NT-2W Pro Trac Air Ride Trailer Suspension	35 1/2" c-c	TH47-33026	TH47-33026	typically 2

General Trailer

Suspension

PL1042 Spring End Pad

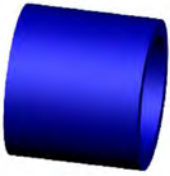


OEM Part#	Length	Height	Width
	4 1/4"	4"	1/2"

General Trailer

Suspension

PL1056 Trunnion Bushing



OEM Part#	Application	ID	OD	Length
70-0103	Single Point Suspension	3 1/2"	4 1/2"	4"

PL1057 Spring End Pad



OEM Part#	Length	Height	Width
	6 5/8"	1/2"	4"

PL1058 Spring End Pad



OEM Part#	Length	Height	Width
	4"	1/2"	3 1/2"

PL1059 Trunnion Bushing



OEM Part#	Application	ID	OD	Length
70-0703	Single Point Suspension	4"	4 7/8"	7 7/8"

Great Dane

Suspension

EQ53-35250 Equalizer Beam w/Bushing



OEM Part#	Application	Length	Misc# Dimensions	Bushing A	Qty per Vehicle
750-03	Model H; Four Spring (49" axle spacing)	16 1/2"	Bolt Hole 3/4"; Bolt Holes: 1 3/8" c-c	EQ53-35234	2

EQ83-35000 Equalizer Beam w/Bushing



OEM Part#	Application	Length	Misc# Dimensions	Bushing A
0650-00 no hardware	Model R Four Spring	16 1/2"	Bolt Hole: 1"	EQ83-35902

EQ83-35902 Equalizer Bushing



OEM Part#	Application	ID	OD	Length
0649-02	Model R Four Spring	1"	3 5/16"	4"

Great Dane

Suspension

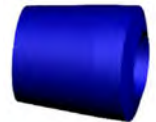
EQ83-35904 Equalizer Bushing Kit



OEM Part#	Application	ID	OD	Length	Bushing A
K0649-04	Model R Four Spring	1"	3 5/16"	4"	EQ83-35902

Torque Rod

PL1084 Torque Rod Bushing



OEM Part#	Application	ID	Large OD	Small OD	Length
GDH7620-00	Model H; Four Spring Suspension	1 1/4"	2 1/4"	1 13/16"	2 5/16"

TH53-37637 Torque Rod Bushing Kit



OEM Part#	Length	Misc# Dimensions
GDH7620-00 bushing	6 1/6" (shaft)	Bolt: 1 1/4"

Other

BP99-34303 Trailer Bumper



OEM Part#	Length	Height	Width	Misc# Dimensions	Qty per Vehicle
SL3000W	5 9/16"	3 3/8"	2 3/4"	Bolt Hole: 1/2"; Bolt Holes: 2 1/2" c-c	2

BP99-34863 Trailer Door Bumper



OEM Part#	ID	OD	Length	Qty per Vehicle
42500863	.38"	1.7"	1.12"	2

BP99-65182 Bumper



OEM Part#	Length	Height	Width	Misc# Dimensions	Qty per Vehicle
035-25182	6 1/4"	3 1/2"	2 1/2"	Bolt Hole: 1/2" Bolt Holes: 3 3/4" c-c	2

BP99-65304 Bumper



OEM Part#	Length	Height	Width	Misc# Dimensions	Qty per Vehicle
41700301	5 5/8"	3 1/2"	2 3/4"	Bolt Hole: 1/2" Bolt Holes: 2 3/4" c-c	2
41700304	5 5/8"	3 1/2"	2 3/4"	Bolt Hole: 1/2" Bolt Holes: 2 3/4" c-c	2

Great Dane

Other

MS99-34008 Trailer/Dock Bumper Pad



OEM Part#	Length	Height	Width	Misc# Dimensions	Qty per Vehicle
30036	8"	3 5/8"	5 1/2"	Bolt Holes: .775" Bolt Hole Pattern: 3.4" c-c x 5.5" c-c	2
41700322	8"	3 5/8"	5 1/2"	Bolt Holes: .775" Bolt Hole Pattern: 3.4" c-c x 5.5" c-c	2

Heil

Other

BP99-65535 Bumper/Arm Stop



OEM Part#	Application	Length	Height	Width	Misc# Dimensions	Qty per Vehicle
01411535	Half Pack®	9 7/8"	2 13/16"	4 1/2"	Bolt Hole: 5/8"; Bolt Holes 5" c-c	2

Hendrickson Trailer

Suspension

MS50-39613 Wear Washer



OEM Part#	Application	ID	OD	Misc# Dimensions	Qty per Vehicle
B11613	Intraax®/Vantraax®	2.27"	7"	Thickness: .35"	4/axle
B-11613	Intraax®/Vantraax®	2.27"	7"	Thickness: .35"	4/axle
S11613	Intraax®/Vantraax®	2.27"	7"	Thickness: .35"	4/axle
S-11613	Intraax®/Vantraax®	2.27"	7"	Thickness: .35"	4/axle

PB00-36314 Flange Bushing



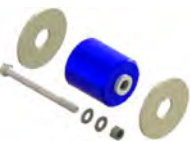
OEM Part#	Application	ID	Large OD	Small OD	Misc# Dimensions
004931	Trailer suspensions & lift axles	1 1/2"	3"	2 1/4"	Barrel Length: 1 1/4"; Flange Thickness: 3/16"

PB50-36000 Pivot Bushing Kit



OEM Part#	Application	ID	Large OD	Length	Misc# Dimensions	Install Tool	Qty per Vehicle
S-24691	Quick Align; Intraax; Vantraax; HT Series; HLM Series	1 1/8"	5 7/8"	6 3/4"	Bolt: 7/8"	PT50-59307	4

PB50-36000-EI Pivot Bushing Kit

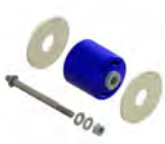


OEM Part#	Application	ID	Large OD	Length	Misc# Dimensions	Install Tool
S-24691	Quick Align; Intraax; Vantraax; HT Series; HLM Series	1 1/8"	5 1/2"	6 3/4"	Bolt: 7/8"	PT50-59307

Hendrickson Trailer

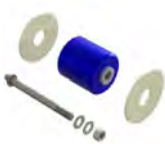
Suspension

PB50-36001 Pivot Bushing Kit w/Hdwr



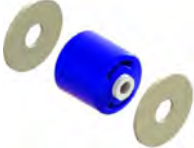
OEM Part#	Application	ID	Large OD	Length	Misc# Dimensions	Install Tool	Bushing A	Qty per Vehicle
S-24691	Quick Align; Intraax; Vantraax; HT Series; HLM Series	1 1/8"	5 7/8"	6 3/4"	Bolt: 7/8"	PT50-59307	HW50-26679	2/axle

PB50-36001-EI Pivot Bushing Kit w/Hdwr



OEM Part#	Application	ID	Large OD	Length	Misc# Dimensions	Install Tool	Bushing A	Qty per Vehicle
S-24691	Quick Align; Intraax; Vantraax; HT Series; HLM Series	1 1/8"	5 1/2"	6 3/4"	Bolt: 7/8"	PT50-59307	HW50-26679	2/axle

PB50-36100 Pivot Bushing Kit



OEM Part#	Application	ID	OD	Length	Install Tool
S-24691	Intraax; Vantraax; HT; HLM	1 1/8"	5 7/8"	6 3/4"	PT50-59307

PB50-36100-EI Pivot Bushing Kit



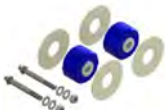
OEM Part#	Application	ID	Large OD	Length	Install Tool
S-24691	Intraax; Vantraax; HT; HLM	1 1/8"	5 1/2"	6 3/4"	PT50-59307

PB50-36321 Pivot Bushing Kit (set of 2)



OEM Part#	Application	Misc# Dimensions	Install Tool	Qty per Vehicle
S-26321	Intraax AANT 23K; Vantraax HKA 180	Bushing ID: 1 1/4"; Bushing OD: 5 1/2"; Bushing Length: 3 5/8"	PT50-59736	2

PB50-36322 Pivot Bushing Kit w/Hdwr, Narrow



OEM Part#	Application	Misc# Dimensions	Install Tool	Bushing A	Qty per Vehicle
S-26321	Intraax AAT23K, 25K, 30K, AANT23K, AAEDT30K	Bushing ID: 1 1/4"; Bushing OD: 5 1/2"; Bushing Length: 3 5/8"	PT50-59736	HW50-26705	1/axle

PB50-36914 Pivot Bushing Kit



OEM Part#	Application	ID	OD	Length	Misc# Dimensions	Install Tool
A-6914	HLM; HT; T; TDC; TMB Series	1 1/8"	5 7/8"	6 3/4"	Bolt: 1 1/8"	PT50-59307

Hendrickson Trailer

Suspension

PB50-36914-EI Pivot Bushing Kit



OEM Part#	Application	ID	OD	Length	Misc# Dimensions	Install Tool
A-6914	HLM; HT; T; TDC; TMB Series	1 1/8"	5 1/2"	6 3/4"	Bolt: 1 1/8"	PT50-59307

Torque Rod

PL1118 Torque Rod Bushing



OEM Part#	Application	ID	Large OD	Small OD	Length
A1712	Q-TR; QS; QT; QU; Turner HLQ-AH/SR; Q-TRU Leaf Spring Lift Axle	7/8"	2 5/16"	1 3/4"	3 1/8"

TH83-22302 Torque Rod Bushing Kit



OEM Part#
A1712 bushing

UB30000 Torque Rod Bushing

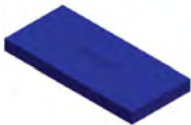


OEM Part#	Application	ID	OD	Length
A1712	Q-TR; QS; QT; QU; Turner HLQ-AH/SR; Q-TRU Leaf Spring Lift Axle	7/8"	1 3/4"	3"

Holland

Suspension

AW51-34010 Axle Wrap



OEM Part#	Application	Length	Height	Width	Qty per Vehicle
91028010	RTS-536, RTS-544, RTS-754-HD, RTS-940	8 3/4"	3/4"	4"	2 per axle

AW51-34036 Axle/Trunnion Kit



OEM Part#	Application	Bushing A	Bushing B	Bushing C	Qty per Vehicle
48100033	RTS Series	PL1094	PL1095	AW51-34010	1 per axle
SRK36	RTS Series	PL1094	PL1095	AW51-34010	1 per axle
SRK-36	RTS Series	PL1094	PL1095	AW51-34010	1 per axle

PB57-21139 Pivot Bushing



OEM Part#	ID	OD	Length
90008139	1 1/8"	3 1/2"	5 1/4"

Holland

Suspension

PB57-21149 Pivot Bushing



OEM Part#	ID	OD	Length
90008149	1 1/8"	2 13/16"	5"

PB57-26279 Pivot Bushing, Front



OEM Part#	Application	ID	OD	Length	Qty per Vehicle
90008266	ADZ-123, ADZ-126	1 1/8"	3 3/16"	3 7/8"	2 per axle

PB57-36200 Pivot Bushing Kit (set of 2)



OEM Part#	Application
48100202	AR; ARU; ART; RL; RLU Series
SRK145	AR; ARU; ART; RL; RLU Series

PB57-36300 Axle Connection Kit



OEM Part#	Application
48100206	AR90/92/93; ARU92/93; RL196/228
SRK-149	AR90/92/93; ARU92/93; RL196/228

Torque Rod

TR57-44645 V-Rod Rebush Kit



OEM Part#	Application	Bushing A	Bushing B	Qty per Vehicle
SRK-645	ADZ Series	TS59-22400	TH57-22264	1/axle

TR57-44992 V-Rod Assembly



OEM Part#	Application	Length	Bushing A	Bushing B	Bushing C	Qty per Vehicle
90045702	ADZ-123; ADZ-126	20 1/2" c-c (H/S); 20 1/4" c-c (S/S)	TS59-22400	TS59-22400	TH57-22264	1
90548900	ADZ-123; ADZ-126	20 1/2" c-c (H/S); 20 1/4" c-c (S/S)	TS59-22400	TS59-22400	TH57-22264	1
90549992	ADZ-123; ADZ-126	20 1/2" c-c (H/S); 20 1/4" c-c (S/S)	TS59-22400	TS59-22400	TH57-22264	1

Other

FW51-32011 5th Wheel Bushing



OEM Part#	ID	OD	Length
XB-0011	1 1/8"	2"	4 1/4"

Holland

Other

FW51-32413 Foot Pin Repair Kit



OEM Part#	Application	Misc# Dimensions	Bushing A	Qty per Vehicle
RK004413	FW2500, FW35, FW8, FW3500, FW33, FW2535 Series	Pivot Pin: Length 7", Diameter 1 1/8" Roll Pin: 3/8" x 2 3/4"	PL1006	1 per 5th Wheel

FW51-32606 Rebuild Kit



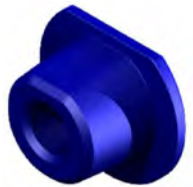
OEM Part#	Application	Qty per Vehicle
RK-10605	FW35 Series	1

FW51-32736 5th Wheel Rebuild Kit



OEM Part#	Application	Bushing A	Qty per Vehicle
RK-11736	FW35 Series	FW99-32604	1

FW99-32605 5th Wheel Bushing



OEM Part#	ID	Large OD	Small OD	Length
XB10605	1 3/16"	3 7/8"	2 7/16"	2 1/16"
XB-10605	FW17 Series	1 3/16"	3 7/8"	2 7/16"

PL1006 5th Wheel Bushing



OEM Part#	ID	OD	Length	Qty per Vehicle
XB-0011-2	1 1/8"	2 1/4"	4 1/4"	2

PL1032 5th Wheel Bushing



OEM Part#	ID	OD	Length
XB-0012-3	1 1/2"	2 5/8"	4 5/16"

PL1036 5th Wheel Bushing



OEM Part#	ID	OD	Length
XA-1604-9	1 1/2"	2 1/2"	4 1/4"

PL1037 5th Wheel Bushing

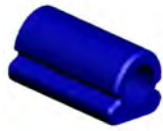


OEM Part#	ID	OD	Length
XB-1604-5	1 1/8"	2 3/4"	4 1/4"

Holland

Other

PL1060 5th Wheel Bushing



OEM Part#	ID	Length	Height
XB-0012-2	1 7/16"	4 1/4"	2 1/4"

Hutchens

Suspension

EQ53-35001 Cast Equalizer Beam w/Bushing



OEM Part#	Application	Length	Misc# Dimensions	Bushing A
16290-01	H9700; H9600 Trailer Four Spring (42 1/2"-49" axle spacing)	16 1/2"	Bolt Hole: 1 1/8"	EQ53-35146
17784-01 no hardware	H9700; H9600 Trailer Four Spring (42 1/2"-49" axle spacing)	16 1/2"	Bolt Hole: 1 1/8"	EQ53-35146

EQ53-35002 Cast Equalizer Beam w/Bushing



OEM Part#	Application	Length	Misc# Dimensions	Qty per Vehicle
16290-01 w/hardware	H9700; H9600 Trailer Four Spring (42 1/2"-49" axle spacing)	16 1/2"	Bolt Hole: 1 1/8"	2
17784-01	H9700; H9600 Trailer Four Spring (42 1/2"-49" axle spacing)	16 1/2"	Bolt Hole: 1 1/8"	2

EQ53-35118 Equalizer Bushing Kit



OEM Part#	Application	ID	OD	Length
16146-01	H/CH 9600-49; 9600/9700 Widespread 61	1 1/8" (bushing)	3 5/16" (bushing)	3 7/8" (bushing)

EQ53-35158 Equalizer Beam w/Bushing



OEM Part#	Application	Length	Misc# Dimensions	Bushing A	Qty per Vehicle
16158-01	H9700; H9600 Trailer Four Spring (42 1/2"-49" axle spacing)	16 1/2"	Bolt Hole: 1 1/8"	EQ53-35146	2

EQ53-35158-NH Equalizer Beam



OEM Part#	Application	Length	Misc# Dimensions	Bushing A
16158-01	H9700; H9600 Trailer Four Spring (42 1/2"-49" axle spacing)	16 1/2"	Bolt Hole: 1 1/8"	EQ53-35146

EQ53-35234 Equalizer Bushing Kit



OEM Part#	Application	OD	Length
7010-00	H/CH 7600/7650 49" to 54.5" Axle Spacing; H/CH 770	3 5/16" (bushing)	2 7/8" (bushing)

Hutchens

Suspension

EQ53-35250 Equalizer Beam w/Bushing



OEM Part#	Application	Length	Misc# Dimensions	Bushing A	Qty per Vehicle
750-03	H7600; H7650; H7700 Trailer Four Spring (49" axle	16 1/2"	Bolt Hole 3/4"; Bolt Holes: 1 3/8" c-c	EQ53-35234	2

EQ53-35701 Cast Equalizer Beam w/Bushing



OEM Part#	Application	Length	Misc# Dimensions
19137-01	H7600; H7650; H7700 Trailer Four Spring (49" axle spacing)	16 1/2"	Bolt Hole: 3/4"; Bolt Holes: 1 3/8" c-c
704-01 no hardware	H7600; H7650; H7700 Trailer Four Spring (49" axle spacing)	16 1/2"	Bolt Hole: 3/4"; Bolt Holes: 1 3/8" c-c

HU10000 Trunnion Bushing



OEM Part#	Application	ID	OD	Length	Qty per Vehicle
11357-00	H900 Trailer Single Point Over/Under Slung	4"	5"	9 1/8"	2
890-00	H900 Trailer Single Point Over/Under Slung	4"	5"	9 1/8"	2
T5711	H900 Trailer Single Point Over/Under Slung	4"	5"	9 1/8"	2

HU10065 Trunnion Bushing (Severe Duty)



OEM Part#	Application	ID	OD	Length
11357-00	H900 Trailer Single Point Over/Under Slung	4"	5"	9 1/8"
890-00	H900 Trailer Single Point Over/Under Slung	4"	5"	9 1/8"
T5711	H900 Trailer Single Point Over/Under Slung	4"	5"	9 1/8"

HW53-37149 Bolt Kit



OEM Part#	Application	Misc# Dimensions
NL1448 bushing & hardware	7700/9700 Trailer Four Spring; 7700 Widespread	Bolt: 1"-14x5"; Nut: 1"-14

HW53-39100 Bolt Assembly, Rebound



OEM Part#	Application	Misc# Dimensions
074100	H/CH 7700/9700	Bolt: 5/8"-18x4 1/2"; Nut: 5/8"x18

Hutchens

Suspension

PL1007 Spring Pad



OEM Part#	Application	Length	Height	Width
814-00	H800A; H900 Trailer Single Point	5"	13/16"	2 7/8"

PL1030 Trunnion Bushing



OEM Part#	Application	ID	OD	Length	Qty per Vehicle
11442-00	H-11455-00 Trailer Tri-Axle Suspension	3 7/16"	4 9/16"	5 3/4"	4

Torque Rod

PL1084 Torque Rod Bushing



OEM Part#	Application	ID	Large OD	Small OD	Length
7620-00	7600 / 7650 / 9600 Trailer Four Spring Suspension; 7600 / 9600 Widespread	1 1/4"	2 1/4"	1 13/16"	2 5/16"

PL1119 Torque Rod Bushing



OEM Part#	Application	ID	Large OD	Small OD	Length
722-00	7700 / 9700 Trailer Four Spring Suspension; 7700 Widespread	1"	2"	1 3/4"	3 1/8"

TH53-37149 Torque Rod Bushing Kit



OEM Part#	Application	Bushing A
722-00 bushing	7700/9700 Trailer Four Spring; 7700 Widespread	PL1119
NL1448	7700/9700 Trailer Four spring; 7700 Widespread	PL1119

TH53-37637 Torque Rod Bushing Kit



OEM Part#	Length	Misc# Dimensions
7620-00 bushing	6 1/6" (shaft)	Bolt: 1 1/4"

TR53-41500 Torque Rod; Fixed Length



OEM Part#	Application	Length	Misc# Dimensions	Bushing A	Bushing B	Qty per Vehicle
715-00	H/CH 7700/9700 Four Spring Trailer	19 1/4" c-c	Bolt Size: 1"	TH53-33100	TH53-33100	typically 2

Hutchens

Torque Rod

TR53-45305 Torque Rod, Adjustable



OEM Part#	Application	Length	Misc# Dimensions	Bushing A	Bushing B	Qty per Vehicle
16398-04	H/CH 7700/9700 Four Spring Trailer	19 1/4" c-c (Adjustable 18 1/2"-21"c-c)	Bolt Size: 1"	TH53-33100	TH53-33100	typically 2
713-05	H/CH 7700/9700 Four Spring Trailer	19 1/4" c-c (Adjustable 18 1/2"-21"c-c)	Bolt Size: 1"	TH53-33100	TH53-33100	typically 2

Hyster

Suspension

PL1061 Suspension Bushing



OEM Part#	Application	ID	Large OD	Small OD	Length
400329	Heavy Duty Trailer Suspension	3"	5 5/8"	4 3/8"	2 13/16"

James King

Other

BP99-34303 Trailer Bumper



OEM Part#	Length	Height	Width	Misc# Dimensions	Qty per Vehicle
3044	5 9/16"	3 3/8"	2 3/4"	Bolt Hole: 1/2"; Bolt Holes: 2 1/2" c-c	2

BP99-36038 Trailer Bumper



OEM Part#	Length	Height	Width	Misc# Dimensions	Qty per Vehicle
3043	6.1"	3.2"	4"	Bolt Hole: 1/2"; Bolt Holes: 2.4" c-c	2

BP99-36040 Trailer Bumper



OEM Part#	Length	Height	Width	Misc# Dimensions	Qty per Vehicle
3042	7"	1 3/4"	1 15/16"	Bolt Hole: 3/8" Bolt Holes: 4 1/2" c-c	2 or 4

BP99-65020 Trailer Bumper



OEM Part#	Length	Height	Width	Misc# Dimensions	Qty per Vehicle
3035	4 5/8"	3 1/2"	2 5/8"	Bolt Hole: 7/16"; Bolt Holes: 2 3/8" c-c	2

James King

Other

BP99-65040 Trailer/Dock Bumper



OEM Part#	Length	Height	Width	Misc# Dimensions	Qty per Vehicle
3630	5 3/4"	3 3/4"	3"	Bolt Holes: 3 1/2" c-c Bolt Size: 1/2"	2
3781	5 3/4"	3 3/4"	3"	Bolt Holes: 3 1/2" c-c Bolt Size: 1/2"	2

BP99-650B1 Bumper



OEM Part#	ID	OD	Height	Qty per Vehicle
3050	.45"	2 1/2"	1"	2

Jost International

Other

FW99-32401 5th Wheel Bushing Kit



OEM Part#	Application	Bushing A
JSK3105-95 collar only	JSK37U, JSK37UA, JSK37US, JSK37UW	FW99-32594
JSK70202-15 bolts only	JSK37U, JSK37UA, JSK37US, JSK37UW	FW99-32594
JSK73104-47 tab washer only	JSK37U, JSK37UA, JSK37US, JSK37UW	FW99-32594
JSK790111-03 bracket pin only	JSK37U, JSK37UA, JSK37US, JSK37UW	FW99-32594
SK2905-94 bushing only	JSK37U, JSK37UA, JSK37US, JSK37UW	FW99-32594
SK2905-95 bushing only	JSK37U, JSK37UA, JSK37US, JSK37UW	FW99-32594
SK75014-01	JSK37U, JSK37UA, JSK37US, JSK37UW	FW99-32594

FW99-32594 5th Wheel Bushing



OEM Part#	Application	ID	OD	Length	Qty per Vehicle
SK2905-94 bushing	JSK37U, JSK37UA, JSK37US, JSK37UW	2"	2 3/4"	4"	2
SK2905-95	JSK37U, JSK37UA, JSK37US, JSK37UW	2"	2 3/4"	4"	2

Kentucky Trailer

Other

BP99-65040 Trailer/Dock Bumper



OEM Part#	Length	Height	Width	Misc# Dimensions	Qty per Vehicle
T-9000	5 3/4"	3 3/4"	3"	Bolt Holes: 3 1/2" c-c Bolt Size: 1/2"	2

DOMED STYLE TRAILER BUMPERS

FEATURES:

- Unique "Dome" shape minimizes damage from contacting docks at varying angles
- ATRO's proprietary polyurethane material has proven to outlast rubber by at least 15 times
- Three Year Warranty (Limited to Material Failure)



BP89-65100

Stoughton:
04-86997-001-00

Length: 5 7/8"
Width: 2 15/16"
Height: 3 1/8"
Bolt Hole: 1/2"
Bolt Holes: 3" c-c

Quantity Per Trailer: 2

UPC Code: 751354037845

BP99-65040

James King: 3630
James King: 3781
Kentucky Trailer: T-9000
Utility Trailer: RDB-003
Wabash: WAB21400098

Length: 5 3/4"
Width: 3"
Height: 3 3/4"
Bolt Hole: 1/2"
Bolt Holes: 3 1/2" c-c

Quantity Per Trailer: 2

UPC Code: 751354037548

BP99-65182

Benson Trailer: B52641
Great Dane: 035-25182

Length: 6 1/4"
Width: 2 1/2"
Height: 3 1/2"
Bolt Hole: 1/2"
Bolt Holes: 3 3/4" c-c

Quantity Per Trailer: 2

UPC Code: 751354037852

BP99-65304

Great Dane: 41700301
Great Dane: 41700304

Length: 5 5/8"
Width: 2 3/4"
Height: 3 1/2"
Bolt Hole: 1/2"
Bolt Holes: 2 3/4" c-c

Quantity Per Trailer: 2

UPC Code: 751354037869

ATRO Saves Time & Dollars

- Reduces Trailer Damage
- Eliminates Downtime
- Functioning Bumpers Save Lights
- Avg. Light Cost = \$234

Trailer Bumper Installation Headaches

Changing out a simple trailer bumper can present a technician with unexpected problems. Many of today's bumpers are mounted into a sealed bumper frame that contains the stop/tail/turn lamps. Often, a lamp will need to be removed to gain access to the rusted nuts on the inside of the trailer bumper frame. This is further complicated when the lamp is secured with a riveted lock ring, common with the newer LED powered stop/tail/turn lamps. The bumper removal process usually takes a minimum of 20 minutes and as much as 45 minutes to complete and often the lamp gets damaged in the process.

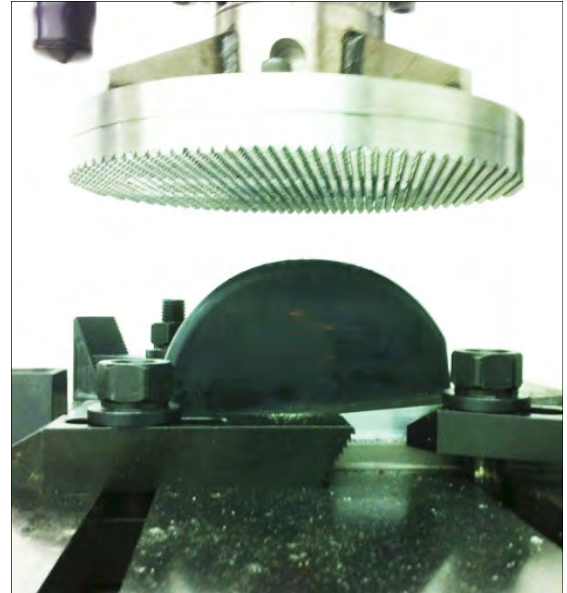
Today's typical rubber trailer bumpers do not last very long and may be worn out in six to twelve months. ATRO's polyurethane bumpers have proven to outlast rubber bumpers by as much as 15 times. Consider the cost of the labor and downtime and trailer damage the next time you purchase trailer bumpers.



Trailer Bumper Test

Set-up and Procedures

1. Each bumper was bolted to a base plate which had a 5° angle machined on it.
 - Angle simulates a trailer bumper contacting a dock.
2. Bumpers impacted by a hardened steel plate which had a rough texture machined in it to accelerate wear.
3. Each impact reached a maximum load of 5,000lbs, which was determined based on the load deflection test results.
4. Testing continued until failure or 250,000 cycles was reached.



Set-Up

Conclusion

ATRO polyurethane bumper far outperformed the rubber bumper by a sizable margin. ATRO bumpers offer superior performance to the OEM rubber bumper based on results of the cycle test and success in the field. The protection of lights and the longevity of parts result in reduction in cost over the life of the trailer.



OEM Bumper @ 16,520 cycles

The ATRO Difference

- One of ATRO's 11 Proprietary Polyurethane is applied to bumpers
 - Engineered ATRO Polyurethanes are specific to the function of the bumper
 - High Tensile Strength and Die C Tear Strength and Reduced Compression Set
- Physical characteristics of rubber are weaker than ATRO polyurethanes



ATRO Bumper @ 250,000 cycles

McNeilus

Other

MS99-65038 Trailer Bumper



OEM Part#	Length	Height	Width	Misc# Dimensions	Qty per Vehicle
0120500	6"; 3" c-c	3 1/2"	3"	Accepts 1/2" Bolt	2

Meritor

Suspension

AW51-34036 Axle/Trunnion Kit



OEM Part#	Bushing A	Bushing B	Bushing C	Qty per Vehicle
R304385	PL1094	PL1095	AW51-34010	1 per axle

EQ83-35000 Equalizer Beam w/Bushing



OEM Part#	Length	Misc# Dimensions	Bushing A
R304813 no hardware	16 1/2"	Bolt Hole: 1"	EQ83-35902

EQ83-35850 Cast Equalizer Beam w/Bushing



OEM Part#	Length	Misc# Dimensions	Bushing A	Qty per Vehicle
R3010250	16 1/2"	Bolt Hole: 1"	EQ83-35902	2

EQ83-35855 Cast Equalizer Beam w/Bushing



OEM Part#	Length	Misc# Dimensions	Bushing A	Qty per Vehicle
R3010250 beam w/bushing	16 1/2"	Bolt Hole: 1"	EQ83-35902	2
R304835 rebound bolt assembly	16 1/2"	Bolt Hole: 1"	EQ83-35902	2

HW53-39100 Bolt Assembly, Rebound



OEM Part#	Misc# Dimensions
R303527	Bolt: 5/8"-18x4 1/2"; Nut: 5/8"x18

MS50-39613 Wear Washer

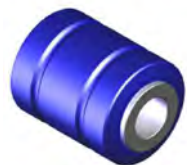


OEM Part#	ID	OD	Misc# Dimensions	Qty per Vehicle
R306122	2.27"	7"	Thickness: .35"	4/axle

Meritor

Suspension

SU99-39113 Pivot Bushing



OEM Part#	Application	ID	OD	Length	Qty per Vehicle
A1225-G-1437	RHP11/MPA Series Tandem Trailer Air Suspensions	.89"	2.27"	3"	8

SU99-39114 Upper Control Arm Bushing & Bolt Kit



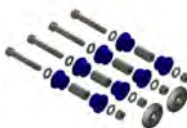
OEM Part#	Application	Bushing A	Qty per Vehicle
FRK0510030	RHP11/MPA Series Tandem Trailer Air Suspensions	SU99-39113	2
KIT11300	RHP11/MPA Series Tandem Trailer Air Suspensions	SU99-39113	2

SU99-39115 Control Arm Bushing Kit



OEM Part#	Application	Bushing A	Bushing B
KIT11126	RHP11	PB00-36314	PB00-36314

SU99-39116 Control Arm Bushing Kit



OEM Part#	Application	Bushing A	Qty per Vehicle
1225-R-1370 bushing only	RHP11	PB00-36314	1/axle
A-1225-L-1416 bushing only	RHP11	PB00-36314	1/axle
KIT11126 2 bushings & sleeve	RHP11	PB00-36314	1/axle

Torque Rod

TH99-37102 Torque Rod Bushing Kit



OEM Part#	Application
KIT11102	RHP11 Trailer Suspension

Neway

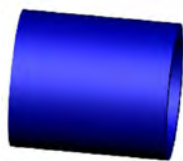
Suspension

PL1041 Spring/Axle Pad



OEM Part#	Application	Length	Height	Width	Qty per Vehicle
910 28 089	Spring Pad: TS; US; USR; Trailer Single Point Axle Pad: T-8540; TR-8750/8900	5 1/4"	7/8"	4 5/8"	4
91028089	Spring Pad: TS; US; USR; Trailer Single Point Axle Pad: T-8540; TR-8750/8900	5 1/4"	7/8"	4 5/8"	4

PL1094 Trunnion Bushing



OEM Part#	Application	ID	OD	Length
910 08 014	RTS-536-1/2/3/4; RTS-544-1/2/3/4	4"	5"	5 3/4"
91008014	RTS-536-1/2/3/4; RTS-544-1/2/3/4	4"	5"	5 3/4"

PL1095 Spring End Pad



OEM Part#	Application	Length	Height	Width
910 28 023	RTS-536-1/2/3/4; RTS-544-1/2/3/4; TA-800-B5; TA-800-C5	5 1/2"	3/4"	1 3/4"
91028023	RTS-536-1/2/3/4; RTS-544-1/2/3/4; TA-800-B5; TA-800-C5	5 1/2"	3/4"	1 3/4"

PL1096 Axle Wrapper



OEM Part#	Application	Length	Height	Width
900 28 007	AR; ART500/551 Series	7 1/8"	3/8"	7 1/8"
90028007	AR; ART500/551 Series	7 1/8"	3/8"	7 1/8"

PL1097 Axle Pad



OEM Part#	Application	Length	Height	Width
900 28 075	All AR/ART Series (except AR90)	7"	7/16"	5 5/8"
90028075	All AR/ART Series (except AR90)	7"	7/16"	5 5/8"

PL1098 Axle Wrapper



OEM Part#	Application	Length	Height	Width
900 28 047	All AR/ART Series (except AR90 & AR95HD)	8"	1/2"	7 1/4"
90028047	All AR/ART Series (except AR90 & AR95HD)	8"	1/2"	7 1/4"

PL1125 Spring End Pad



OEM Part#	Application	Length	Height	Width
910 28 152	Two Spring Tandem Trailer; TS-426A/432/436/442/5 36/542	6 1/2"	11/16"	4 5/8"
91028152	Two Spring Tandem Trailer; TS-426A/432/436/442/5 36/542	6 1/2"	11/16"	4 5/8"

PL1154 Center Bushing



OEM Part#	Application	ID	OD	Length
900 08 131	ARD 125/244 (1981-); T/TR-8540/8600/8750/89 00 Trailer Tri-Axle New Style; RC Series	1 1/8"	2 3/8"	5"
90008131	ARD 125/244 (1981-); T/TR-8540/8600/8750/89 00 Trailer Tri-Axle New Style; RC Series	1 1/8"	2 3/8"	5"

AW51-34036 Axle/Trunnion Kit



OEM Part#	Application	Bushing A	Bushing B	Bushing C	Qty per Vehicle
48100033	RTS Series	PL1094	PL1095	AW51-34010	1 per axle
SRK36	RTS Series	PL1094	PL1095	AW51-34010	1 per axle
SRK-36	RTS Series	PL1094	PL1095	AW51-34010	1 per axle

AW57-10000 Axle Wrap (set of 4)



OEM Part#	Application	Length	Height	Width	Qty per Vehicle
910 28 039	T-8750/8900 Series Tri-Axle Spring (20" wheel; 5" round cent	8 15/16"	13/16"	5"	1
91028039	T-8750/8900 Series Tri-Axle Spring (20" wheel; 5" round cent	8 15/16"	13/16"	5"	1

AW57-12000 Axle Wrap (set of 4)



OEM Part#	Application	Length	Height	Width	Misc# Dimensions	Qty per Vehicle
910 28 051	T-8540/8750/8900 (20" wheel; 5" round center axle); TR-8540/	9"	3/4"	5"	Small Width: 3"	1
91028051	T-8540/8750/8900 (20" wheel; 5" round center axle); TR-8540/	9"	3/4"	5"	Small Width: 3"	1

AW57-14000 Axle Pads (set of 4)



OEM Part#	Application	Length	Height	Width	Qty per Vehicle
91028075	TR8450/8600 Tri-Axle Trailer	3"	15/16"	5 1/2"	4

PL1154 Center Bushing



OEM Part#	Application	ID	OD	Length
1090237	LM-2000/3000 Lift Axle Suspension; Trailmaster Air Spring	1 1/8"	2 3/8"	5"

PL1078 Spring Pad



OEM Part#	Application	Length	Height	Width
31-12	Logger Single Point Trailer	6 1/4"	5/8"	4 1/2"

Peerless

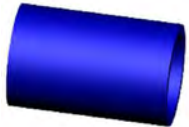
Suspension

PL1092 Reach Cradle



OEM Part#	Length
20623	11 3/4"; 6 1/2" c-c holes

PL1101 Trunnion Bushing



OEM Part#	Application	ID	OD	Length
36-10	Trailer Walking Beam; Logger Single Point Trailer	4"	4 15/16"	7 13/16"

PL1103 Trailing Arm Bushing



OEM Part#	Application	ID	OD	Length
36-15	Trailer Air Suspension	3 1/2"	4 1/2"	10 9/16"

PL1121 Walking Beam Bushing



OEM Part#	Application	ID	OD	Length
36-22	Trailer Walking Beam	3 1/2"	4 1/2"	7 9/16"

PL1123 Pivot Arm Bushing



OEM Part#	ID	OD	Length
36-21	2 1/2"	3 1/2"	7"
36-521	2 1/2"	3 1/2"	7"

PL1124 Trunnion Bushing



OEM Part#	ID	OD	Length
36-500	4"	5"	10 3/8"

Premier

Suspension

PL1019 Hinge Bushing



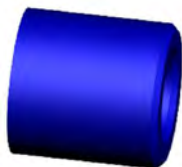
OEM Part#	Application	OD	Length	Misc# Dimensions
344	320-330 Hinge Assembly	3 1/2"	4 1/2"	ID is tapered from 1 9/16" to 1 7/8"
344A	320-330 Hinge Assembly	3 1/2"	4 1/2"	ID is tapered from 1 9/16" to 1 7/8"

PL1020 Hinge Bushing



OEM Part#	Application	ID	OD	Length
448	440-450 Hinge Assembly	2"	3 7/16"	1 13/16"
448A	440-450 Hinge Assembly	2"	3 7/16"	1 13/16"

PL1021 Drawbar Eye Bushing



OEM Part#	Application	ID	OD	Length
348	340S/340SA & 640S/640SA Front End Assemblies	2"	3 1/2"	3 5/8"
348A	340S/340SA & 640S/640SA Front End Assemblies	2"	3 1/2"	3 5/8"

PL1079 Drawbar Eye Bushing



OEM Part#	Application	ID	OD	Length
437	435 Front End Assembly; 536 Housing w/207S; 307S; 405S & 410S Swivel Eyes	2"	4 1/4"	4 1/2"
437A	435 Front End Assembly; 536 Housing w/207S; 307S; 405S & 410S Swivel Eyes	2"	4 1/4"	4 1/2"

PL1080 Drawbar Eye Bushing



OEM Part#	Application	ID	OD	Length
P205	546 Housing w/207SE; 307SE; 405SE; 407SE & 410SE Swivel Eyes	2 1/16"	4 3/4"	5 3/16"
P205A	546 Housing w/207SE; 307SE; 405SE; 407SE & 410SE Swivel Eyes	2 1/16"	4 3/4"	5 3/16"

PL1081 Hinge Bushing



OEM Part#	Application	ID	OD	Length
434	430 Hinge Assembly	2 1/2"	4 1/4"	5"
434B	430 Hinge Assembly	2 1/2"	4 1/4"	5"

SC99-36437 Hinge Bushing (set of 2)



OEM Part#	Application	ID	OD	Length
437AK	536 Housing w/207K & 307K Swivel Eyes	2 1/4"	4 1/4"	4 1/2"

Reliance

Other

PL1182 Dock Bumper



OEM Part#	Length	Height	Width	Misc# Dimensions	Qty per Vehicle
360A	5"	2 5/8"	3 1/2"	Small Width: 2 5/8"	2

Reyco

Suspension

EQ83-11000 Equalizer Bushing



OEM Part#	Application	ID	Large OD	Small OD	Length
T-5524	21B Trailer Suspension	1 5/8"	3 1/2"	2 3/4"	4 3/8"

EQ83-35000 Equalizer Beam w/Bushing



OEM Part#	Application	Length	Misc# Dimensions	Bushing A
0650-00 no hardware	Model 86/88/89 Four Spring	16 1/2"	Bolt Hole: 1"	EQ83-35902

EQ83-35850 Cast Equalizer Beam w/Bushing



OEM Part#	Length	Misc# Dimensions	Bushing A	Qty per Vehicle
0850-00	16 1/2"	Bolt Hole: 1"	EQ83-35902	2

EQ83-35855 Cast Equalizer Beam w/Bushing



OEM Part#	Length	Misc# Dimensions	Bushing A	Qty per Vehicle
0741-00 rebound bolt assembly	16 1/2"	Bolt Hole: 1"	EQ83-35902	2
0850-00 beam w/bushing	16 1/2"	Bolt Hole: 1"	EQ83-35902	2

EQ83-35902 Equalizer Bushing



OEM Part#	Application	ID	OD	Length
0649-02	Model 86/88/89 Four Spring	1"	3 5/16"	4"

EQ83-35904 Equalizer Bushing Kit



OEM Part#	Application	ID	OD	Length	Bushing A
K0649-04	Model 86/88/89 Four Spring	1"	3 5/16"	4"	EQ83-35902

Suspension

SK83-31000 Equalizer Bushing Kit



OEM Part#	Application	ID	OD	Length
T-5524	21B Trailer Suspension	1 1/2"	3 1/8"	4 7/16"
TK18998	21B Trailer Suspension	1 1/2"	3 1/8"	4 7/16"

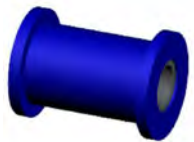
Torque Rod

PL1115 Torque Rod Bushing



OEM Part#	Application	ID	Large OD	Small OD	Length	Misc# Dimensions
T-2242	102CC Single Axle; Model 102 Tractor Four Spring	1 1/16"	2 5/16"	1 13/16"	2 11/16"	For 1" bolt

PL1118 Torque Rod Bushing



OEM Part#	Application	ID	Large OD	Small OD	Length
09729-01	Multiple applications	7/8"	2 5/16"	1 3/4"	3 1/8"

TH83-22302 Torque Rod Bushing Kit



OEM Part#	Application
TK7302	31/41; Model 45; 79KB; 83; 101A; 102W; 102AR; 102CC; 201; 240AR

TH83-37022 Torque Rod Bushing Kit



OEM Part#	Application
0022-01	Model 86/88 Heavy Weight/Super Heavy Weight Trailer Suspension

TH83-37997 Torque Rod Bushing Kit



OEM Part#	Application
TK18997	21/B/21B-FAB; 21AR; Model 45; Trailer Suspension

TR83-41520 Torque Rod, Fixed Length



OEM Part#	Application	Length	Misc# Dimensions	Bushing A	Bushing B
0075-20	86/88/89 Four Spring	19 7/8" c-c	Bushing ID: 7/8" Bushing Length: 3"	TH83-13000	TH83-13000

Reyco

Torque Rod

TR83-45520 Torque Rod, Adjustable



OEM Part#	Application	Length	Misc# Dimensions	Bushing A	Bushing B
1035-20	Model 86/88/89; 86AR	19 7/8" c-c (Adjustable 18 1/4"-21 1/2" c-c)	Bolt Size: 7/8"	TH83-13000	TH83-13000

UB30000 Torque Rod Bushing



OEM Part#	Application	ID	OD	Length
09729-01	Multiple applications	7/8"	1 3/4"	3"

Ridewell

Suspension

PB85-36029 Mono-Pivot Bushing Kit



OEM Part#	Application	Bushing A	Qty per Vehicle
6040029	RAR240 Overslung/RAR240 Underslung	PB85-360B0	2/axle

Rockwell

Suspension

PL1005 Spring Pad



OEM Part#	Length	Height	Width	Qty per Vehicle
303582	7 9/16"	1"	4 5/8"	4

Silver Eagle

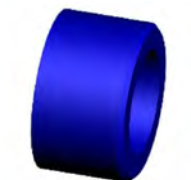
Suspension

PL1022 Eye Bushing



OEM Part#	ID	OD	Length
R-205	2 1/2"	4 3/4"	5 3/16"

PL1023 Hinge Bushing



OEM Part#	ID	OD	Length
R-213	2 1/2"	3 3/4"	2 3/16"

Silver Eagle

Suspension

PL1082 Spring End Boot (Left)



OEM Part#	Application	ID
G-34	Trailer Dolly Suspension; Low Profile Trailer	1"

PL1083 Spring End Boot (Right)



OEM Part#	Application	ID
G-35	Trailer Dolly Suspension; Low Profile Trailer	1"

PL1129 Shock Bushing



OEM Part#	ID	Length	Height	Width
12170	2 1/2"	4 7/16"	4 15/16"	4 1/4"

Simplex

Other

PL1130 5th Wheel Bushing



OEM Part#	Length	Height	Width
ASF-0329-47	10"	5/16"	3 5/8"

PL1144 5th Wheel Pad

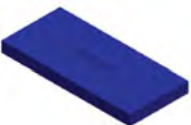


OEM Part#	Length	Height	Width
4100358	10 5/16"	5/8"	3 5/8"
ASF-0358-07	10 5/16"	5/8"	3 5/8"

Spicer

Suspension

AW51-34010 Axle Wrap



OEM Part#	Length	Height	Width	Qty per Vehicle
L1138	8 3/4"	3/4"	4"	2 per axle
L1338	8 3/4"	3/4"	4"	2 per axle

Stoughton

Suspension

EQ53-35001 Cast Equalizer Beam w/Bushing



OEM Part#	Length	Misc# Dimensions	Bushing A
H16290-01	16 1/2"	Bolt Hole: 1 1/8"	EQ53-35146
H17784-01 no hardware	16 1/2"	Bolt Hole: 1 1/8"	EQ53-35146

EQ53-35002 Cast Equalizer Beam w/Bushing



OEM Part#	Length	Misc# Dimensions	Qty per Vehicle
16290-01 w/hardware	16 1/2"	Bolt Hole: 1 1/8"	2
17784-01	16 1/2"	Bolt Hole: 1 1/8"	2

EQ53-35701 Cast Equalizer Beam w/Bushing



OEM Part#	Length	Misc# Dimensions
H19137-01 no hardware	16 1/2"	Bolt Hole: 3/4"; Bolt Holes: 1 3/8" c-c

PB57-21139 Pivot Bushing



OEM Part#	ID	OD	Length
NW900-08-139	1 1/8"	3 1/2"	5 1/4"

PB57-21149 Pivot Bushing



OEM Part#	ID	OD	Length
NW900-08-149	1 1/8"	2 13/16"	5"

PB85-36029 Mono-Pivot Bushing Kit



OEM Part#	Bushing A	Qty per Vehicle
RI6040029	PB85-360B0	2/axle

PB99-36201 Pivot Bushing Kit



OEM Part#	Qty per Vehicle
RWKIT11201	2 per axle

SU99-39115 Control Arm Bushing Kit



OEM Part#	Bushing A	Bushing B
RWKIT1126	PB00-36314	PB00-36314

Stoughton

Other

BP89-65100 Bumper



OEM Part#	Length	Height	Width	Misc# Dimensions	Qty per Vehicle
04-86997-001-00	5 7/8"	3 1/8"	2 15/16"	Bolt Hole: 1/2" Bolt Holes: 3" c-c	2

BP89-65300 Trailer/Dock Bumper



OEM Part#	Length	Height	Width	Misc# Dimensions	Qty per Vehicle
	7 1/2"	3.725"	5 1/2"	Bolt Hole Length: 5 3/8" c-c; Bolt Hole Width: 3" c-c	2

FW51-32011 5th Wheel Bushing



OEM Part#	ID	OD	Length
HHXB-0011	1 1/8"	2"	4 1/4"

MS99-65038 Trailer Bumper



OEM Part#	Application	Length	Height	Width	Misc# Dimensions	Qty per Vehicle
04-85104-PLY-00	multiple applications	6"; 3" c-c	3 1/2"	3"	Accepts 1/2" Bolt	2

MS99-65341 Dock Bumper



OEM Part#	Application	Length	Height	Width	Misc# Dimensions	Qty per Vehicle
04-85341-000-00	Loading docks; multiple applications	7 3/8"	3 7/8"	5 1/2"	Hole Pattern: 3" x 5 1/4"	2
04-85341-PLY-00	Loading docks; multiple applications	7 3/8"	3 7/8"	5 1/2"	Hole Pattern: 3" x 5 1/4"	2

Thermo King

Other

MS99-39159 Vibration Mount



OEM Part#	ID	OD	Misc# Dimensions
91-2618	5/8"	2 1/4"	Short Length: 1"; Long Length: 1 1/2"
91-4159	5/8"	2 1/4"	Short Length: 1"; Long Length: 1 1/2"

MS99-39709 Vibration Mount



OEM Part#	OD	Length	Misc# Dimensions
91-1404	2 1/2"	2.1"	Bolt ID: 5/8"
91-2578	2 1/2"	2.1"	Bolt ID: 5/8"
91-7709	2 1/2"	2.1"	Bolt ID: 5/8"

Trailmobile

Suspension

EQ53-35001 Cast Equalizer Beam w/Bushing



OEM Part#	Length	Misc# Dimensions	Bushing A
HU1629001	16 1/2"	Bolt Hole: 1 1/8"	EQ53-35146
HU1778401 no hardware	16 1/2"	Bolt Hole: 1 1/8"	EQ53-35146

EQ53-35002 Cast Equalizer Beam w/Bushing



OEM Part#	Length	Misc# Dimensions	Qty per Vehicle
HU1629001 w/hardware	16 1/2"	Bolt Hole: 1 1/8"	2
HU1778401	16 1/2"	Bolt Hole: 1 1/8"	2

EQ53-35701 Cast Equalizer Beam w/Bushing



OEM Part#	Length	Misc# Dimensions
HU-19137-01 no hardware	16 1/2"	Bolt Hole: 3/4"; Bolt Holes: 1 3/8" c-c

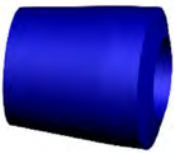
PB57-36300 Axle Connection Kit



OEM Part#
NE-48100206

Torque Rod

PL1084 Torque Rod Bushing



OEM Part#	Application	ID	Large OD	Small OD	Length
7620-00	International Fabricated; Trailer Four Spring	1 1/4"	2 1/4"	1 13/16"	2 5/16"

PL1119 Torque Rod Bushing



OEM Part#	Application	ID	Large OD	Small OD	Length
3-12-35.	Standard Fabricated; Trailer Four Spring	1"	2"	1 3/4"	3 1/8"

TH53-37149 Torque Rod Bushing Kit



OEM Part#	Application	Bushing A
700-7-149	Standard Fabricated Four Spring	PL1119

Trailmobile

Torque Rod

TH53-37637 Torque Rod Bushing Kit



OEM Part#	Application	Length	Misc# Dimensions
3-69-2	"International" 4 Spring Trailer Suspension	6 1/6" (shaft)	Bolt: 1 1/4"
7637-00	"International" 4 Spring Trailer Suspension	6 1/6" (shaft)	Bolt: 1 1/4"

Other

MS99-65341 Dock Bumper

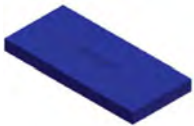


OEM Part#	Application	Length	Height	Width	Misc# Dimensions	Qty per Vehicle
700-99-484	Loading docks; multiple applications	7 3/8"	3 7/8"	5 1/2"	Hole Pattern: 3" x 5 1/4"	2

Transpro

Suspension

AW51-34010 Axle Wrap



OEM Part#	Length	Height	Width	Qty per Vehicle
0921-00	8 3/4"	3/4"	4"	2 per axle

EQ83-35000 Equalizer Beam w/Bushing



OEM Part#	Application	Length	Misc# Dimensions	Bushing A
0650-00 no hardware	Model 86/88/89 Four Spring	16 1/2"	Bolt Hole: 1"	EQ83-35902

EQ83-35902 Equalizer Bushing



OEM Part#	Application	ID	OD	Length
0649-02	Model 86/88/89 Four Spring	1"	3 5/16"	4"

EQ83-35904 Equalizer Bushing Kit

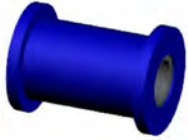


OEM Part#	Application	ID	OD	Length	Bushing A
K0649-04	Model 86/88/89 Four Spring	1"	3 5/16"	4"	EQ83-35902

Transpro

Torque Rod

PL1118 Torque Rod Bushing



OEM Part#	Application	ID	Large OD	Small OD	Length
0022-00	HLQ-AH/SR	7/8"	2 5/16"	1 3/4"	3 1/8"
A-1712	HLQ-AH/SR	7/8"	2 5/16"	1 3/4"	3 1/8"

TR83-45520 Torque Rod, Adjustable



OEM Part#	Application	Length	Misc# Dimensions	Bushing A	Bushing B
1035-20	Model 86/88/89	19 7/8" c-c (Adjustable 18 1/4"-21 1/2" c-c)	Bolt Size: 7/8"	TH83-13000	TH83-13000

UB30000 Torque Rod Bushing

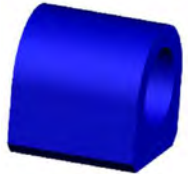


OEM Part#	ID	OD	Length
0022-00	7/8"	1 3/4"	3"
A-1712	7/8"	1 3/4"	3"

Utility Trailer

Suspension

PL1024 Hinge Bushing



OEM Part#	ID	Length	Width
3-1306	1 7/8"	2 7/8"	2 7/8"

PL1040 Wear Pad



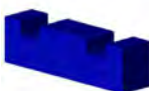
OEM Part#	Length	Height	Width	Misc# Dimensions
	4"	11/16"	3 5/8"	Groove: 1 1/8"

PL1045 Wear Pad



OEM Part#	Length	Height	Width
	6"	1 1/4"	3 5/16"

PL1089 Wear Pad



OEM Part#	Length	Height	Width
	5 3/8"	1 1/4"	1 1/2"

Utility Trailer

Suspension

SC99-34101 Spring Pad



OEM Part#	Length	Height	Width
3-5851-01	3 1/2"	1 3/8"	1 3/8"

Other

BP99-65000 Trailer Door Bumper



OEM Part#	OD	Length	Misc# Dimensions	Qty per Vehicle
3-1250-25	1 7/8"	1 5/8"	Bolt: 1/2"	2

BP99-65020 Trailer Bumper



OEM Part#	Length	Height	Width	Misc# Dimensions	Qty per Vehicle
03-1250-0-214	4 5/8"	3 1/2"	2 5/8"	Bolt Hole: 7/16"; Bolt Holes: 2 3/8" c-c	2

BP99-65040 Trailer/Dock Bumper



OEM Part#	Length	Height	Width	Misc# Dimensions	Qty per Vehicle
RDB-003	5 3/4"	3 3/4"	3"	Bolt Holes: 3 1/2" c-c Bolt Size: 1/2"	2

Van Raden

Suspension

PL1187 Trailing Arm Bushing



OEM Part#	ID	OD	Length
3049271	1 1/4"	2"	5 1/2"

PL1188 Drop Axle Bushing



OEM Part#	ID	OD	Length
3049270	1"	4 1/8"	4"

Vanguard National

Other

BP91-34046 Trailer Door Bumper



OEM Part#	OD	Height	Misc# Dimensions	Qty per Vehicle
RDB00004	1 11/16"	3/8"	Hole ID: 3/8" Counterbore ID: 3/4" Counterbore Depth: 9/16"	2

BP99-36040 Trailer Bumper



OEM Part#	Length	Height	Width	Misc# Dimensions	Qty per Vehicle
RDB00002	7"	1 3/4"	1 15/16"	Bolt Hole: 3/8" Bolt Holes: 4 1/2" c-c	2 or 4

Wabash

Other

BP99-34312 Trailer/Dock Bumper



OEM Part#	Length	Height	Width	Misc# Dimensions	Qty per Vehicle
	6"	3 1/4"	2 1/2"	Holes: 2.63" c-c	2

BP99-65040 Trailer/Dock Bumper



OEM Part#	Length	Height	Width	Misc# Dimensions	Qty per Vehicle
WAB21400098	5 3/4"	3 3/4"	3"	Bolt Holes: 3 1/2" c-c Bolt Size: 1/2"	2

Watson & Chalin

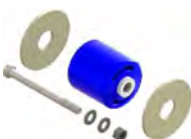
Suspension

PB00-36314 Flange Bushing



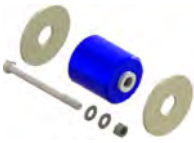
OEM Part#	Application	ID	Large OD	Small OD	Misc# Dimensions
19204	Trailer suspensions & lift axles	1 1/2"	3"	2 1/4"	Barrel Length: 1 1/4"; Flange Thickness: 3/16"
19682	Trailer suspensions & lift axles	1 1/2"	3"	2 1/4"	Barrel Length: 1 1/4"; Flange Thickness: 3/16"

PB50-36000 Pivot Bushing Kit



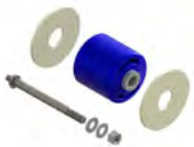
OEM Part#	ID	Large OD	Length	Misc# Dimensions	Install Tool	Qty per Vehicle
17993-112 bushing only	1 1/8"	5 7/8"	6 3/4"	Bolt: 7/8"	PT50-59307	4

PB50-36000-EI Pivot Bushing Kit



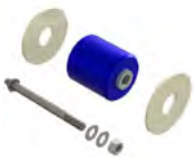
OEM Part#	ID	Large OD	Length	Misc# Dimensions	Install Tool
17993-112 bushing only	1 1/8"	5 1/2"	6 3/4"	Bolt: 7/8"	PT50-59307

PB50-36001 Pivot Bushing Kit w/Hdwr



OEM Part#	ID	Large OD	Length	Misc# Dimensions	Install Tool	Bushing A	Qty per Vehicle
17993-112 bushing only	1 1/8"	5 7/8"	6 3/4"	Bolt: 7/8"	PT50-59307	HW50-26679	2/axle

PB50-36001-EI Pivot Bushing Kit w/Hdwr



OEM Part#	ID	Large OD	Length	Misc# Dimensions	Install Tool	Bushing A	Qty per Vehicle
17993-112 bushing only	1 1/8"	5 1/2"	6 3/4"	Bolt: 7/8"	PT50-59307	HW50-26679	2/axle

PL1005 Spring Pad



OEM Part#	Application	Length	Height	Width	Qty per Vehicle
SP-0039	Straddlemount Trailer; Single Point; PP; Pedestal Mount; Single Point PP	7 9/16"	1"	4 5/8"	4

PL1041 Spring/Axle Pad



OEM Part#	Length	Height	Width	Qty per Vehicle	
SP-0040	5 1/4"	7/8"	4 5/8"	4	
SP-0193	Straddle mount Trailer; Single Point; HD/LW; Pedestal Mount HD/LW	5 1/4"	7/8"	4 5/8"	4

Torque Rod

PL1119 Torque Rod Bushing



OEM Part#	Application	ID	Large OD	Small OD	Length
17012	SL-1100-LP/LR/LW/RO/SR/SRR/Auxiliary Truck Suspension	1"	2"	1 3/4"	3 1/8"

TR53-41500 Torque Rod; Fixed Length

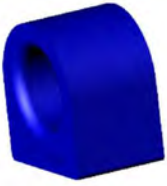


OEM Part#	Application	Length	Misc# Dimensions	Bushing A	Bushing B	Qty per Vehicle
12954	SL Series	19 1/4" c-c	Bolt Size: 1"	TH53-33100	TH53-33100	typically 2

Western Unit

Suspension

PL1027 Hinge Bushing



OEM Part#	Application	ID	Length	Width
102308	Dolly	1 3/4"	2 15/16"	2 1/8"

PL1099 Eye Bushing



OEM Part#	Application	ID	Length	Width
102309	Dolly	1 3/4"	3 5/16"	3 1/8"

Miscellaneous

Other

BP99-36037 Trailer Bumper



OEM Part#	Length	Height	Width	Misc# Dimensions	Qty per Vehicle
Various	6"	3.3"	3"	Bolt Hole: 1/2"; Bolt Holes: 2 1/2" c-c	2



Can't find what you need ...

Call us ... 1.800.325.6114

Part Number Index

ATRO Part Number	Page	ATRO Part Number	Page
A		HW53-37149	17
AW51-34010	13, 32, 36	HW53-39100	17, 23
AW51-34036	13, 23, 26	L	
AW57-10000	26	LP19-24002	2
AW57-12000	26	LP19-24015	2
AW57-14000	26	LP19-24026	2
B		M	
BP89-65100	34	MS19-29002	2
BP89-65300	34	MS19-29028	2
BP91-34046	39	MS19-29029	2
BP99-34303	10, 19	MS19-29055	3
BP99-34312	39	MS19-29201	3
BP99-34408	5	MS50-39613	11, 23
BP99-34863	10	MS99-34008	11
BP99-36037	41	MS99-39159	34
BP99-36038	19	MS99-39709	34
BP99-36040	6, 19, 39	MS99-65038	23, 34
BP99-65000	38	MS99-65341	32, 34
BP99-65020	19, 38	P	
BP99-65040	20, 38, 39	PB00-36314	11, 39
BP99-650B1	20	PB50-36000	11, 39
BP99-65182	1, 10	PB50-36000-EI	11, 40
BP99-65304	10	PB50-36001	12, 40
BP99-65535	11	PB50-36001-EI	12, 40
E		PB50-36100	12
EQ47-35900	7	PB50-36100-EI	12
EQ53-35001	16, 33, 35	PB50-36321	12
EQ53-35002	16, 33, 35	PB50-36322	12
EQ53-35118	16	PB50-36364	4
EQ53-35158	16	PB50-36914	12
EQ53-35158-NH	16	PB50-36914-EI	13
EQ53-35234	16	PB57-21139	7, 13, 33
EQ53-35250	9, 17	PB57-21149	14, 33
EQ53-35701	17, 33, 35	PB57-26279	14
EQ83-11000	29	PB57-36200	14
EQ83-35000	9, 23, 29, 36	PB57-36300	14, 35
EQ83-35850	23, 29	PB85-36029	31, 33
EQ83-35855	23, 29	PB99-36201	33
EQ83-35902	9, 29, 36	PL1002	7
EQ83-35904	10, 29, 36	PL1004	7
F		PL1005	7, 31, 40
FW51-32011	14, 34	PL1006	15
FW51-32413	15	PL1007	18
FW51-32606	15	PL1019	27
FW51-32736	15	PL1020	28
FW99-32109	6	PL1021	28
FW99-32172	6	PL1022	31
FW99-32175	6	PL1023	31
FW99-32191	6	PL1024	37
FW99-32300	6	PL1027	41
FW99-32301	6	PL1030	18
FW99-32401	20	PL1032	15
FW99-32594	20	PL1036	15
FW99-32605	15	PL1037	15
FW99-32LLB	7	PL1040	37
H		PL1041	24, 40
HU10000	17	PL1042	8
HU10065	17	PL1043	7
HW19-29200	1	PL1045	37
HW19-29201	1	PL1046	3
HW19-29202	2	PL1047	3
		PL1049	3

Part Number Index

ATRO Part Number	Page	ATRO Part Number	Page
PL1050	1	PL1154	25, 26
PL1056	9	PL1178	4
PL1057	9	PL1182	29
PL1058	9	PL1187	38
PL1059	9	PL1188	38
PL1060	16	S	
PL1061	19	SC99-34101	38
PL1078	26	SC99-36437	28
PL1079	28	SK83-31000	30
PL1080	28	SU99-39113	24
PL1081	28	SU99-39114	24
PL1082	32	SU99-39115	24, 33
PL1083	32	SU99-39116	24
PL1084	8, 10, 18, 35	T	
PL1085	8	TH19-22010	3
PL1089	37	TH19-22128	3
PL1092	27	TH19-22129	4
PL1094	25	TH47-37900	8
PL1095	5, 25	TH53-37149	18, 35
PL1096	25	TH53-37637	10, 18, 36
PL1097	25	TH83-22302	5, 13, 30
PL1098	25	TH83-37022	30
PL1099	41	TH83-37997	30
PL1100	4	TH99-37102	24
PL1101	27	TN99-31490	4
PL1103	27	TR47-41026	8
PL1115	5, 30	TR47-41028	8
PL1118	1, 5, 13, 30, 37	TR53-41500	18, 40
PL1119	18, 35, 40	TR53-45305	19
PL1121	27	TR57-44645	14
PL1123	27	TR57-44992	14
PL1124	27	TR83-41520	30
PL1125	25	TR83-45520	31, 37
PL1129	32	U	
PL1130	32	UB30000	1, 5, 13, 31, 37
PL1144	32		

ATRO

POLYURETHANE PARTS | SOLUTIONS FOR HEAVY TRUCKS AND TRAILERS

COMMITTED TO
QUALITY



SUPERIOR
CUSTOMER SERVICE

ENGINEERED | DURABLE | RELIABLE

KEY FEATURES: *The ATRO Difference*

ATRO maintains 11 proprietary formulations, ATRO Polys, each having unique physical properties to optimize performance. Whether absorbing a shock or transferring energy, ATRO is engineered to function based on the demands of the part. ATRO provides polyurethane parts and solutions for heavy trucks.

WHAT MAKES **ATRO PARTS** DIFFERENT ...

The Material

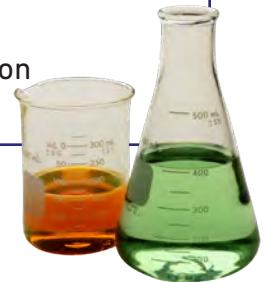


11 PROPRIETARY ATRO POLY FORMULAS

Upon evaluation of the application and the purpose/function of the part, ATRO will determine which specifically formulated poly. ATRO meets or exceeds OE specs, matches or improves ride performance.

POLYURETHANES ARE DIFFERENT

- Ranging Durometer
- Tensile Strength
- Tear Strength
- Compression Set
- Ultimate Elongation
- Rebound



ATRO Polyurethane is better than Rubber

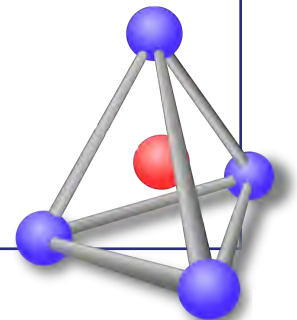


STRONGER MATERIAL

- ATRO Polys are specifically engineered to the function of the part providing added durability and reliability to the suspension.
- ATRO Polys absorb energy, some deflect energy. Some maintain higher rebound or greater compression. Each part engineered for purpose and functionality.
- Rubber primarily maintains one set of properties.
- ATRO Polys maintains at least 2x or greater tensile and tear strength and 2x the elongation vs. rubber.

CHEMICALLY RESISTANT

- ATRO Polys are impervious to oil, grease, brine, cleaning solvents, hydraulic fluids and diesel fuel.
- Rubber deteriorates in similar conditions.



ATRO

POLYURETHANE • SOLUTIONS

6 Bolte Lane

St. Clair, Missouri 63077 | U.S.A.

(800) 325-6114 | Fax (866) 920-2005

ATROBUSHING.COM

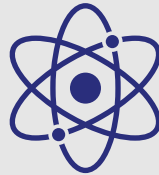


ATRO'S POLYURETHANE IS BETTER THAN RUBBER



CHEMICALLY RESISTANT

Impervious to Oil, Grease, Brine,
Cleaning Solvents, Hydraulic
Fluids and Diesel Fuel
Rubber Deteriorates



11 PROPRIETY FORMULAS

Engineered to Function
Absorbs Shock or Transfers Energy
Exceeds OE Specs
Longer Lasting Parts



STRONGER MATERIAL

2-5 Times Stronger
Rebound & Compression
Tensile & Tear Strength
Elongation Properties
Ranging Durometer