

**HI-MACS® ENHANCES  
EVERY KITCHEN.**



**THE NEW GENERATION.**  
Inspired by Architecture.

THE KITCHEN IS THE ROOM WHERE IT ALL COMES TOGETHER: THE HIGHEST LEVEL OF FUNCTIONALITY, COMFORT AND AESTHETICS. THE PERFECT KITCHEN LEAVES NO SPACE FOR WORRIES ABOUT HYGIENE OR DURABILITY: THE PARTNER OF CHOICE FOR THE ACCOMPLISHED COOK.

What is your concept when you hear the term "work in the kitchen"? Do you see yourself sponging, scrubbing and polishing? HI-MACS® wants to help you enjoy your time in the kitchen: cooking, preparing and having a great time with your friends and family. The material provides everything to make your day easier. What is that? Take a minute and we will show you.



# OUTSTANDING FEATURES ABOUND. THE COMPELLING MATERIAL FOR THE KITCHEN.

As in cooking the recipe of a material is essential. HI-MACS® is a sophisticated composition of acrylic, natural minerals and pigments that come together to provide a smooth, non porous and visually seamless surface which meets the highest standards for all aspects that make a kitchen a great kitchen: aesthetics, functionality and hygiene. Thanks in large part to its flexibility, HI-MACS® offers manifold advantages over conventional materials like laminate, granite, steel or wood.



### Outstanding features for the kitchen

HI-MACS® is a highly technical composition of acrylic, natural minerals and pigments that come together to provide a smooth, non porous and visually seamless surface which meets the highest standards for all aspects that make a kitchen a great kitchen: aesthetics, functionality and hygiene.

### Seamless perfection for 100% hygiene

HI-MACS® allows for visually seamless processing. This smooth integration enables you to create large areas without joints as well as flush mounting of sinks. The fabrication and its non porous nature make the material extremely hygienic, easy-to-clean: ideally suited for kitchens.

### Unlimited colour spectrum

HI-MACS® offers a virtually limitless range of colours in all conceivable shades, more are being added every year. No matter what colour you choose, the consistency of HI-MACS® remains 100% homogeneous. And this is what counts for a strong performance in your kitchen.

### Design options with no end in sight

Ever dreamt of a circular kitchen island with large radii or a worktop that smoothly merges with the wall cladding? Due to its ingenious composition HI-MACS® can be shaped into any three-dimensional design by a high-class thermo-forming technology. Exactly how it should be.

### Easy to maintain

Thanks to its non-porous, dirt repellent surface, HI-MACS® is ideal for working with food and even common chemicals cannot harm the material. You can simply clean it with soapy water or a domestic all purpose cleaner. This is why HI-MACS® is offered with the unique 15 years warranty when fabricated by a Quality Club Member.

# IN THE KITCHEN THE WORDS 'QUALITY' AND 'DETAIL' DEFINE THEIR MEANING.



Highly functional and ultra-elegant: HI-MACS® in the kitchen. HI-MACS® offers a wide selection of colours to combine with other materials.

Cupboard doors in place of countertops. HI-MACS® is known for its outstanding performance as a kitchen countertop. Unlike conventional designs, this simple yet elegant classic kitchen utilises HI-MACS® for all doors and cupboard panels. Its perfect ease of care, above all its pleasing warm feel make HI-MACS® the material of choice.



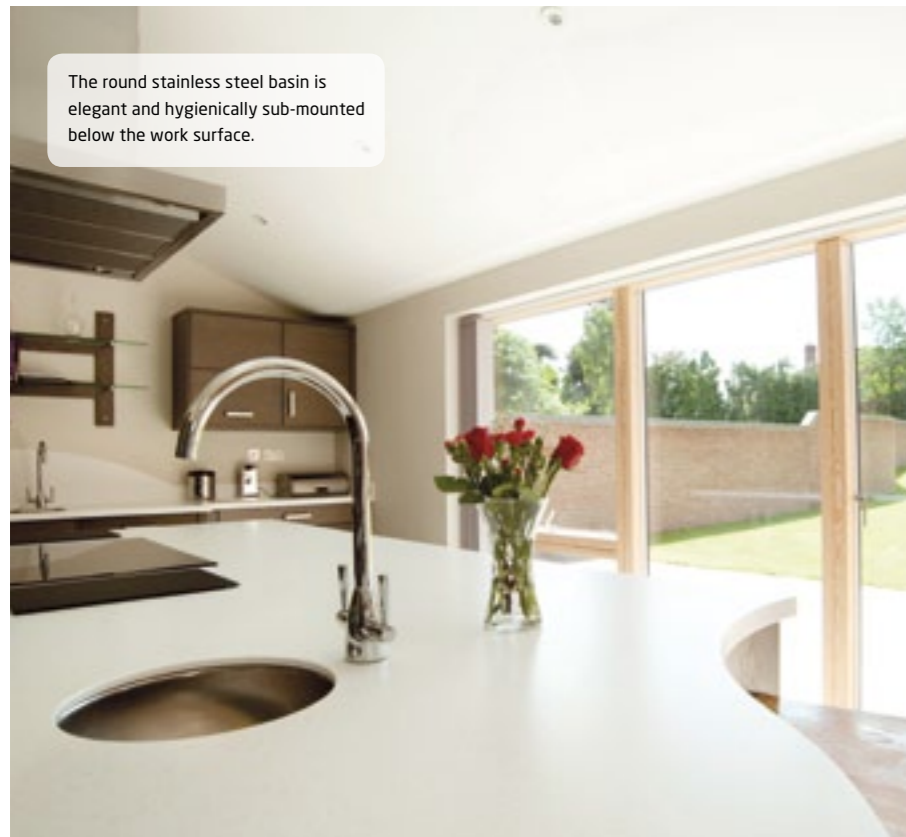
As if machined from a block: the flush-mounted sink is seamlessly installed in the worktop.

## A strong material for a stunning kitchen.

In the kitchen HI-MACS® can be almost anywhere. Work surface, sink, kitchen island, cabinets, drawer units and door fronts can be all made from the solid surface material. Highest level of function: even in the smallest detail.

**A HI-MACS® specialty:  
keeping ahead of the times.**

The curving contours of the island unit in the middle of this kitchen gives a distinct elegance to the installation. Where many traditional materials reach their limits; HI-MACS® finds features such as circles, curves and spectacular forms mere child's-play.



The round stainless steel basin is elegant and hygienically sub-mounted below the work surface.



The run-off grooves alongside the main sink can be milled into custom designs.

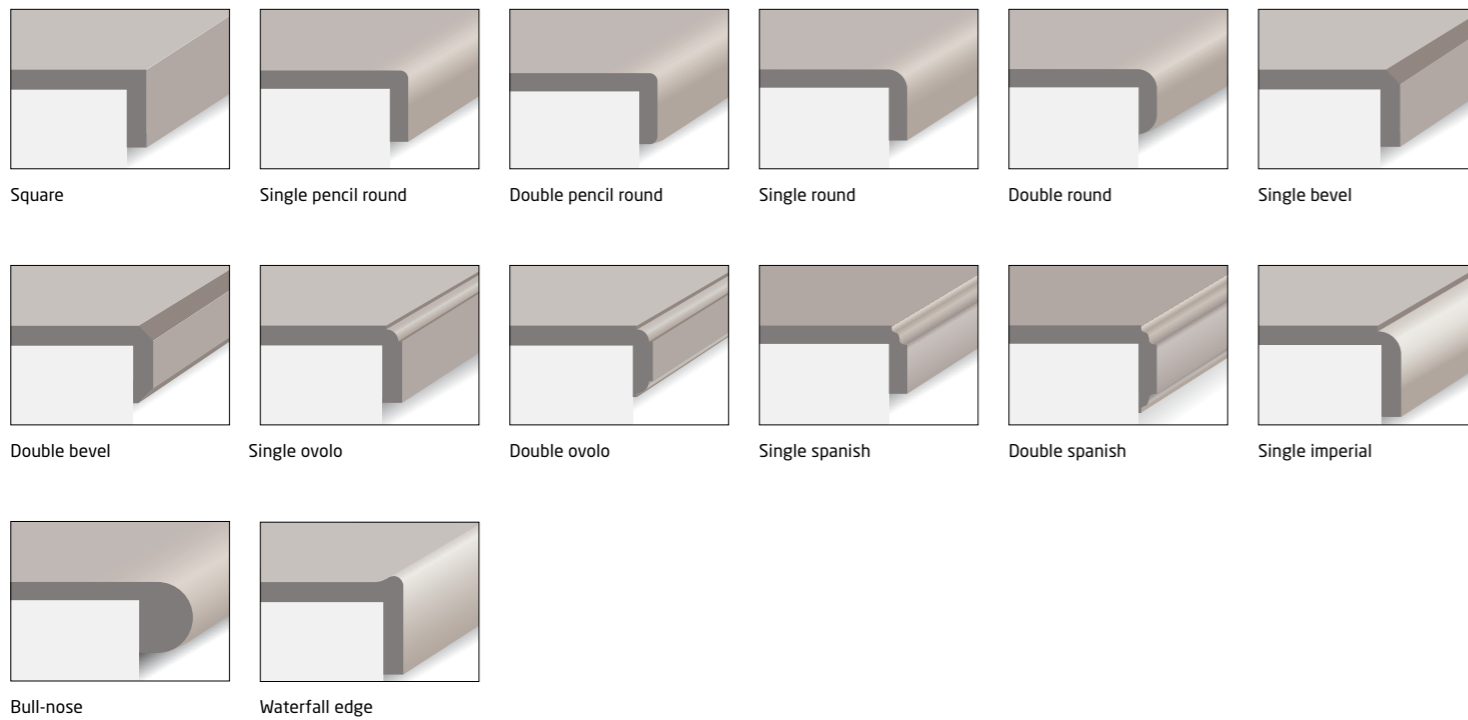


The White HI-MACS® work surface perfectly complements the dark wood.

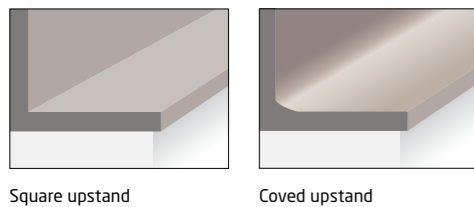
# STRAIGHT, CURVED, RECTANGULAR, BAROQUE ... ANYTHING SOLID YOU CAN IMAGINE.

Due to the highly flexible manufacturing options of HI-MACS® your dealer can offer a wide range of attractive and functional edge-treatments and hygienic splashbacks for your kitchen. Here you can see a small selection of the various possibilities.

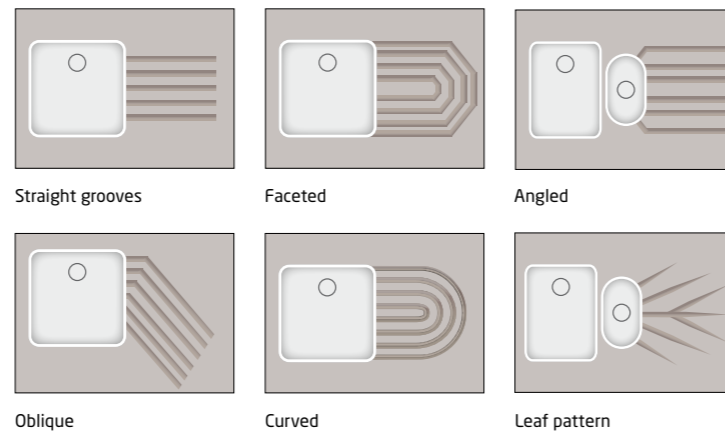
## Edge profile examples



## Splashbacks

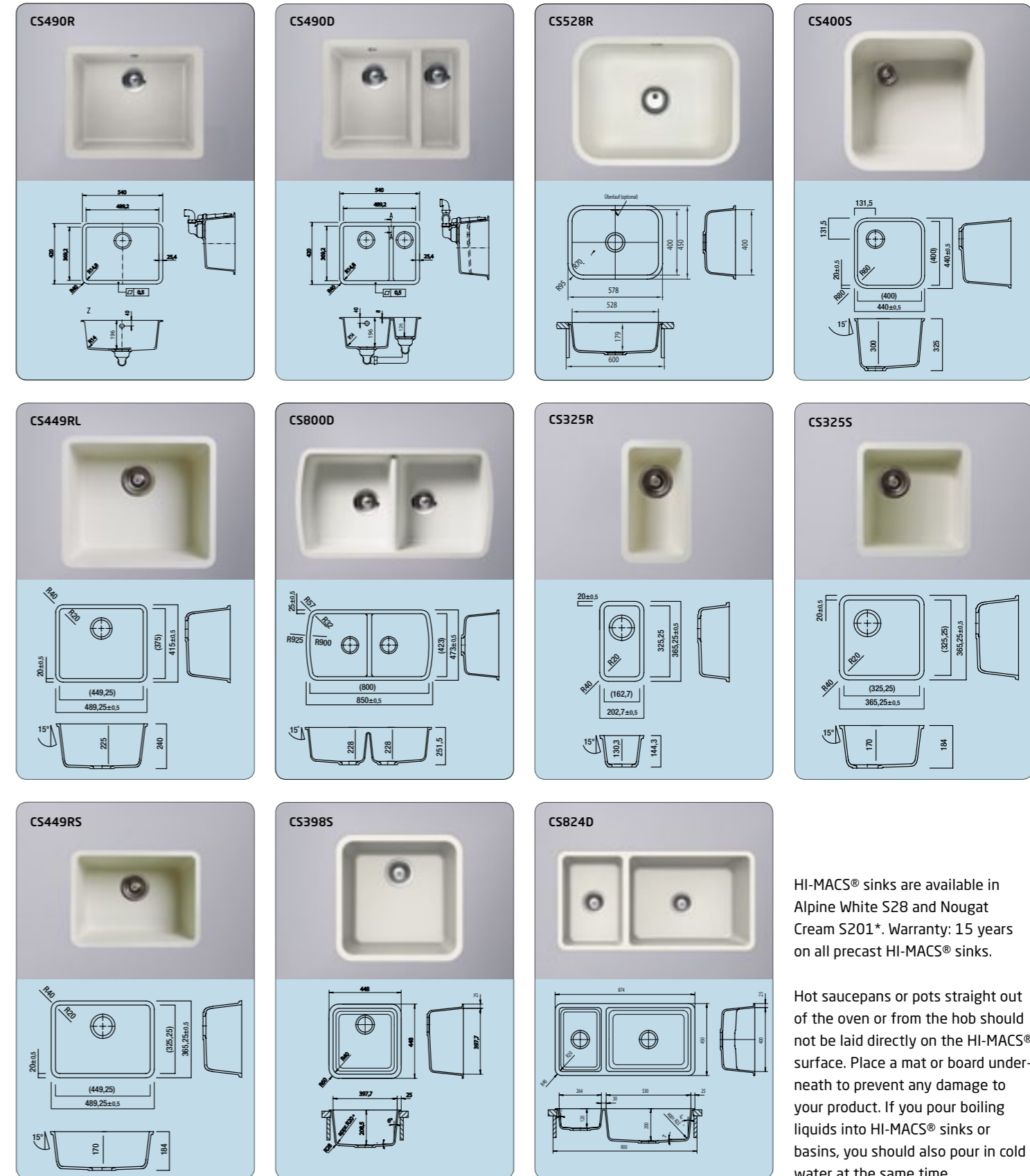


## Drainer groove examples



# SINKS. SPACIOUS AND ELEGANT.

Perfectly coordinated and ideal for mixing and matching your kitchen worktop, the spacious sinks provide high-level functionality, guarantee a modern appearance, and are easy to look after.



HI-MACS® sinks are available in Alpine White S28 and Nougat Cream S201\*. Warranty: 15 years on all precast HI-MACS® sinks.

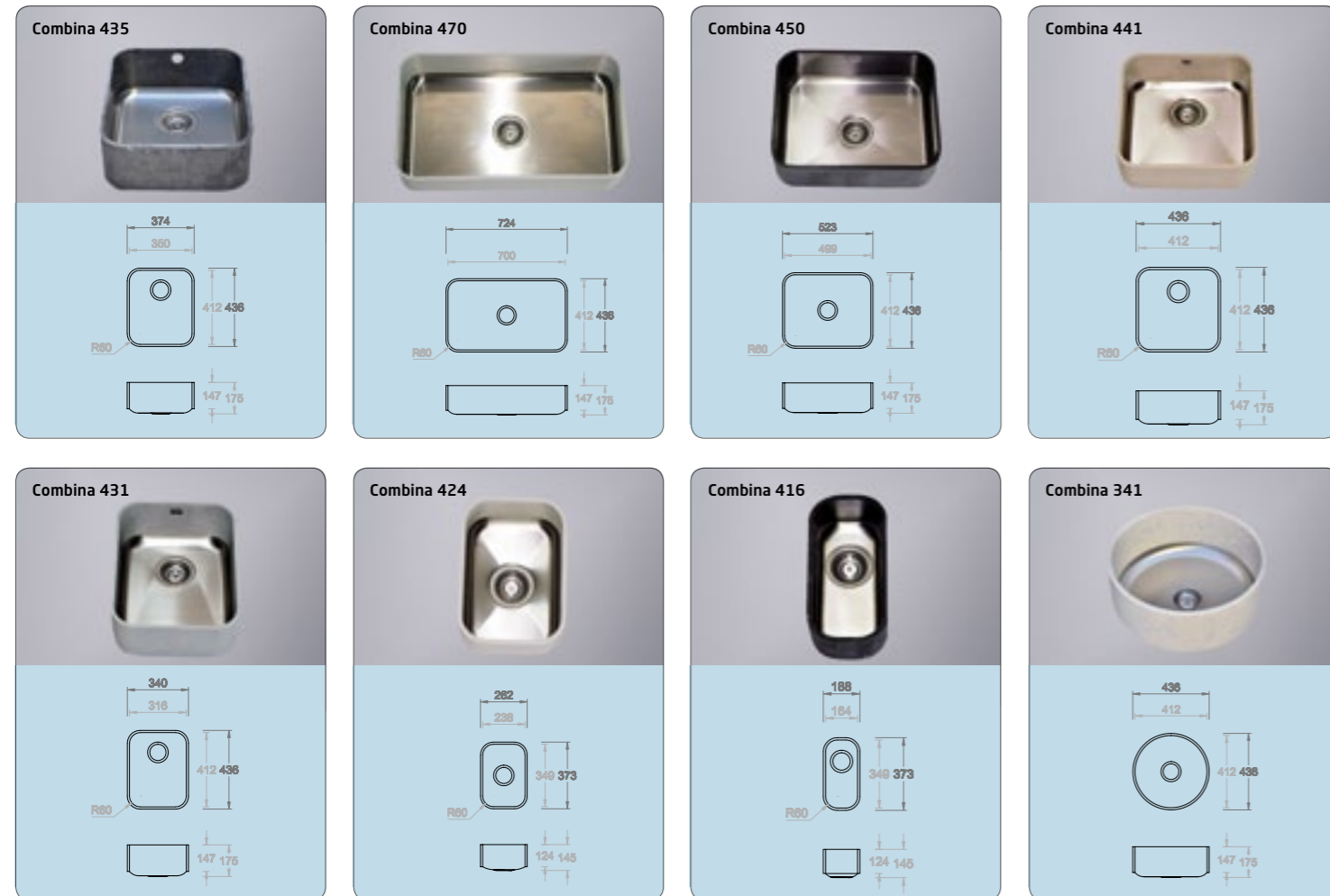
Hot saucepans or pots straight out of the oven or from the hob should not be laid directly on the HI-MACS® surface. Place a mat or board underneath to prevent any damage to your product. If you pour boiling liquids into HI-MACS® sinks or basins, you should also pour in cold water at the same time.

## Stainless Steel Based Sinks utilising HI-MACS®

HI-MACS® has found the perfect synergy for hardwearing sinks - stainless steel. The HI-MACS® sided sinks are smooth, aesthetic, non porous and available in a multitude of colours to compliment any worktop. They are married to stainless steel, giving a highly robust and durable base that can withstand the rigours of a typical working kitchen.

All Combina sinks are available in the colours (except Bologna and Eden) from the residential colour range.

**Warranty** Peace of mind comes with the fact that these sinks come with a 10 year limited warranty.

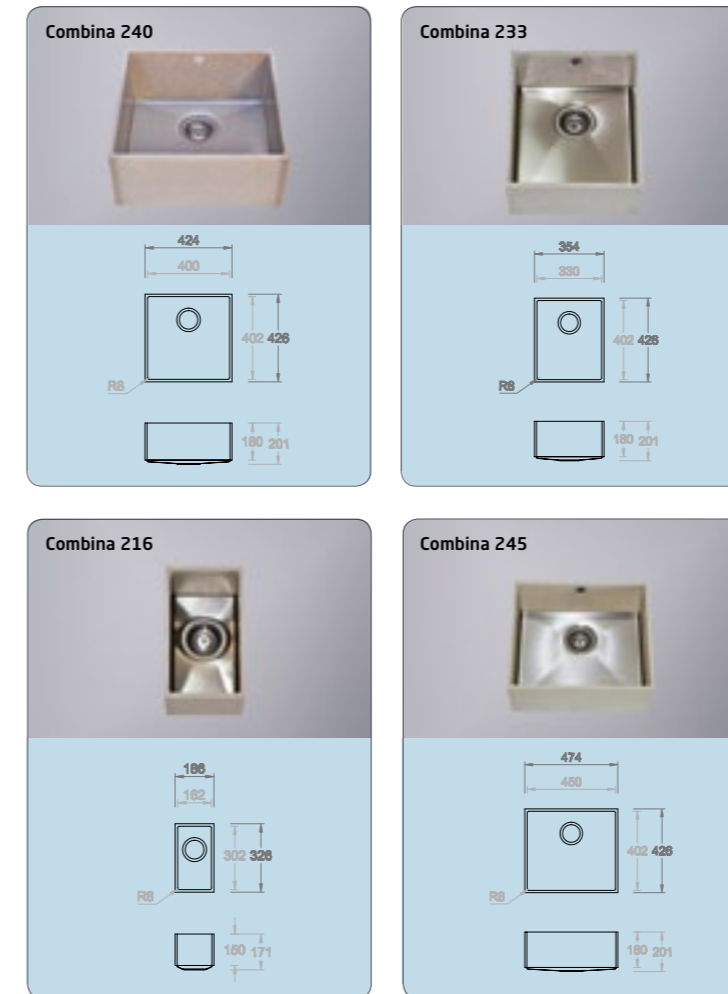


## Stainless Steel Based Sinks utilising HI-MACS®

The sinks when under mounted, will seamlessly integrate in to your HI-MACS® worktop. Because the join between the worktop and sink is seamless you do not get water ingress and as such there is no hiding place for bacteria. With a wide range of colours, shapes and sizes available you can be sure to find your perfect solution.

All Combina sinks are available in the colours (except Bologna and Eden) from the residential colour range.

**Warranty** Peace of mind comes with the fact that these sinks come with a 10 year limited warranty.



# THE COLOURS FOR COOKING.

Colours are key in design: elegant Cream, hot Allspice Quartz or delicious Mocha Granite ...

We have whatever you want – it's your choice.

## Solids

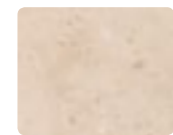
From elegant to extravagant, classic to ultra-contemporary - this is a limitless collection.



**19 mm:** S28 Alpine White available in stock. All other solid colours on special order only.  
**3 mm:** S28 Alpine White available in stock. S06 Arctic White, S09 Cream and S201 Nougat Cream on special order only.

## Marmo

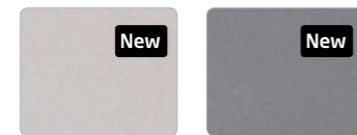
You will be captivated by its sophisticated texture, reminiscent of marble.



Bologna M103 [12 mm]

## Sparkle New

These stunning new colours – exclusively designed by star-designer Karim Rashid – enthralls with its sparkling-effect caused by restrained use of metallic particles.



Kreemy Grey P101 [12 mm] Kold Silver P102 [12 mm]



## Eden

A one-of-a-kind palette with warm natural shades and various grain sizes. What makes the collection unique: it consists of up to 41% recycled materials.



Cocoa G501R [12 mm] 12% Recycled Content Sugar Maple G510R [12 mm] 40% Recycled Content Poplar G511R [12 mm] 40% Recycled Content Birch Bark G514R [12 mm] 40% Recycled Content Pecan G515R [12 mm] 41% Recycled Content Hickory G516R [12 mm] 40% Recycled Content Mountain Ash G517R [12 mm] 40% Recycled Content Ripe Cotton G518R [12 mm] 12% Recycled Content

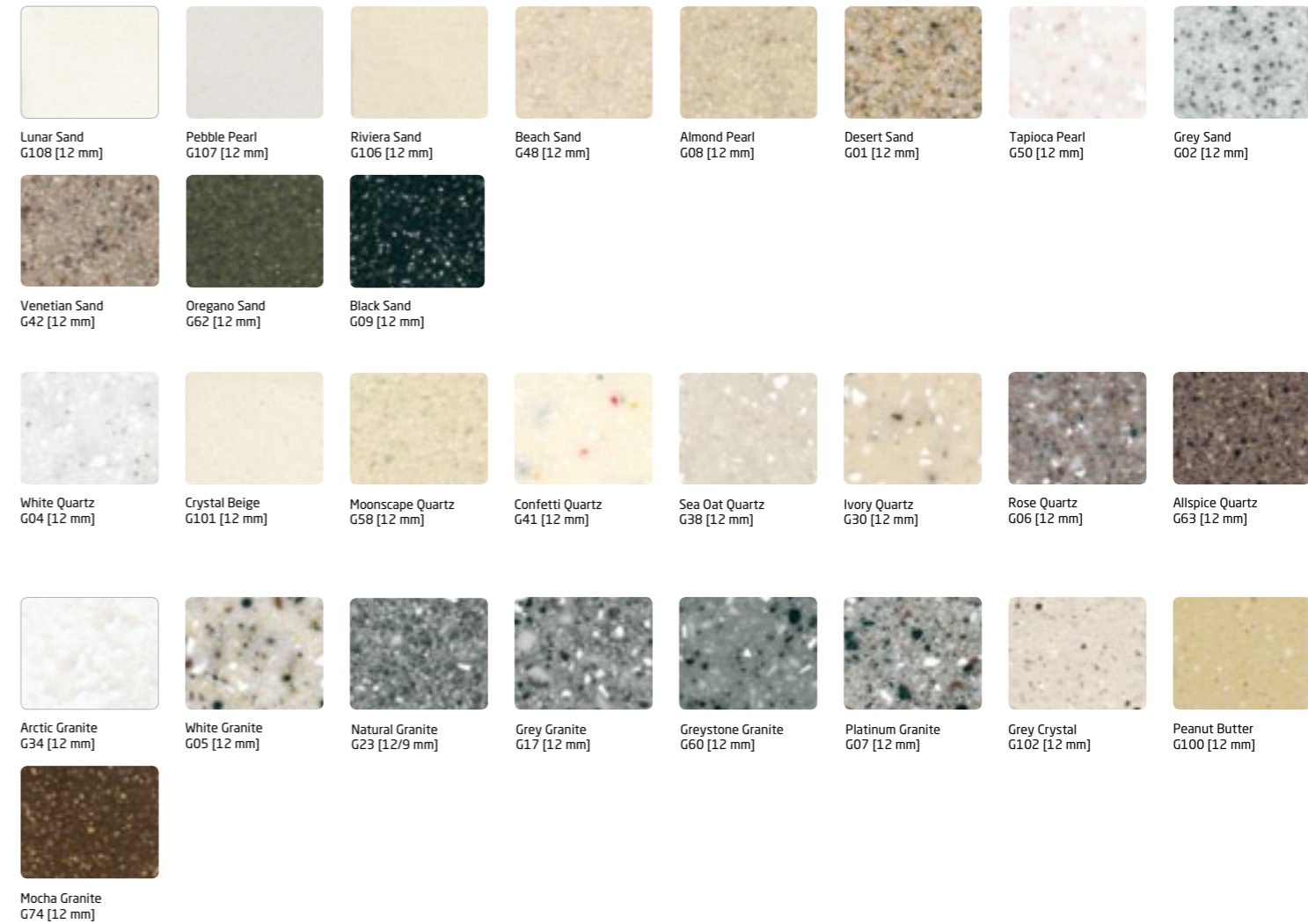
## Scoring eco-credits across the board.

The LEED (Leadership in Energy and Environmental Design) seal is a proven classification system for ecological, resource-saving and sustainable construction. The credit-based certification process rates buildings on a number of different criteria. Opting for HI-MACS® Eden in new construction and renovation projects may provide up to 2 credits in the following LEED categories:

- Indoor Environmental Quality (IEQ)**  
**LEED IEQ 4.1:** low-emission materials, adhesives and sealants (1 credit)
- Materials & Resources (MR)**  
**LEED MR 4.1:** materials with more than 10% recycled content (1 credit)  
**LEED MR 4.2:** materials with more than 20% recycled content (2 credits)

## Sand & Pearl, Quartz, Granite

A huge selection of textures and colours. Natural, elegant and perfect to combine.



## Galaxy

With transparent grains and mother of pearl shimmer, as if from another world.



## Volcanics

Full of depth and mysticism, akin to a precious natural stone but with all of the advantages of "Natural Acrylic Stone".



The basic HI-MACS® material is identical for every colour, although darker hues have a higher percentage of natural pigments. There may be some slight variation in colour between the illustrated and actual colours due to printing techniques. The recommended finish for kitchen worktops is semi-matt. Due to specific characteristics and properties of the Marmo colours, which have a veined effect, special consideration has to be taken into account with jointing and the use of covered up-stands. Veining may vary from sheet to sheet.



## Resistant for your benefit.

HI-MACS® is extremely hardwearing and durable and transforms your kitchen throughout the day into a universal function room.

Test substance	Application time	Evaluation of G02 changes	Evaluation of S06 changes
Acetic acid	16h	no change	no change
Citric acid	16h	no change	no change
White wine, red wine	16h	no change	no change
Beer	16h	not tested	not tested
Cola drinks	16h	no change	no change
Instant coffee	16h	no change	no change
Black Tea	16h	no change	no change
Blackcurrant juice	16h	no change	no change
Cream	16h	no change	no change
Water	16h	no change	no change
Butter	16h	no change	no change
Olive Oil	16h	no change	no change
Mustard	16h	no change	no change
Salt	16h	no change	no change
Onions	16h	no change	no change
Disinfectant	16h	no change	no change
Cleaning agent	16h	no change	no change
Cleaning solution	16h	no change	no change

# WE WOULD BE PLEASED TO PROVIDE YOU WITH DETAILS AND INFORMATION.

HI-MACS®. The New Generation.

E-Mail: [ukoffice@himacs.eu](mailto:ukoffice@himacs.eu)

To see more kitchen styles and models,  
visit our website:

[www.himacs.eu](http://www.himacs.eu)

HI-MACS® and Natural Acrylic Stone™ are registered trademarks of LG Hausys Europe GmbH. All other trademarks and product names are trademarks or registered trademarks of their respective rights owners. The information contained in this brochure is intended to be for information only and can be amended at any time without prior notification. ©2014. LG Hausys Europe GmbH. All rights reserved.