



Advanced Heating
& Hot Water Systems

HIGH EFFICIENCY Crossover



Water Heater

RGH-75F, RGH-76F & RGH-100F

Fighting the High Cost of Water Heating!

Fully Condensing
Achieves up to
96% Efficiency

Half the Storage &
Twice the Btuh Result
in a Recovery Rate
that is 4 Times Faster
than Traditional
Storage Units!



To place an order contact
your local representative
www.htproducts.com/rep



www.htproducts.com



The Crossover



incorporates the best of both worlds in one unit with its tank and tankless components. The result is one appliance that exceeds all of your hot water needs



We are excited to introduce the new high efficiency Crossover models: RGH-75F, RGH-76F & RGH-100F. This revolutionary product was designed to be the most highly efficient affordable residential tank type product in the industry.

High Performance

The Crossover Residential/Commercial Floor model combines the flow capacity of a 50 gallon tank type water heater with the continuous flow feature found in tankless water heaters. It has dual activation by flow or thermostat sensing which guarantees hot water delivery even with low flow fixtures. It's built in fire tube heat exchanger is surrounded by a stainless steel tank that holds a full 20 gallons of up to 167 degree hot water and then mixes the delivered temperature down through a **ASSE 1017 mixing valve** and can thus fill a 40 gallon tub at the same rate as a traditional 50 gallon tank type water heater. The RGH 75, 76 & 100 can also produce more first hour delivery than conventional 50 gallon water heaters. These two new models will change the way people view residential water heating and it is only available through HTP and our agent partners.

Fantastic Features

Extra thick insulation combined with small water volume storage result in very low standby loss

High altitude compliant – certified up to 10,000 ft. above sea level

All stainless steel tank construction with integrated fire tube heat exchanger design

Endless hot water - advanced temperature control - compatible with recirculation systems

Preset for natural gas ships with a liquid propane conversion kit

Eco-friendly and low NOx combustion system leave almost no carbon footprint

Air handler application:
Combination heating & DHW

Includes an ASSE 1017 domestic rated thermostatic valve (prepped) increasing 1st draw capacity & temperature control

A Closer Look

Super Durable All Stainless Steel Fire Tube Heat Exchanger

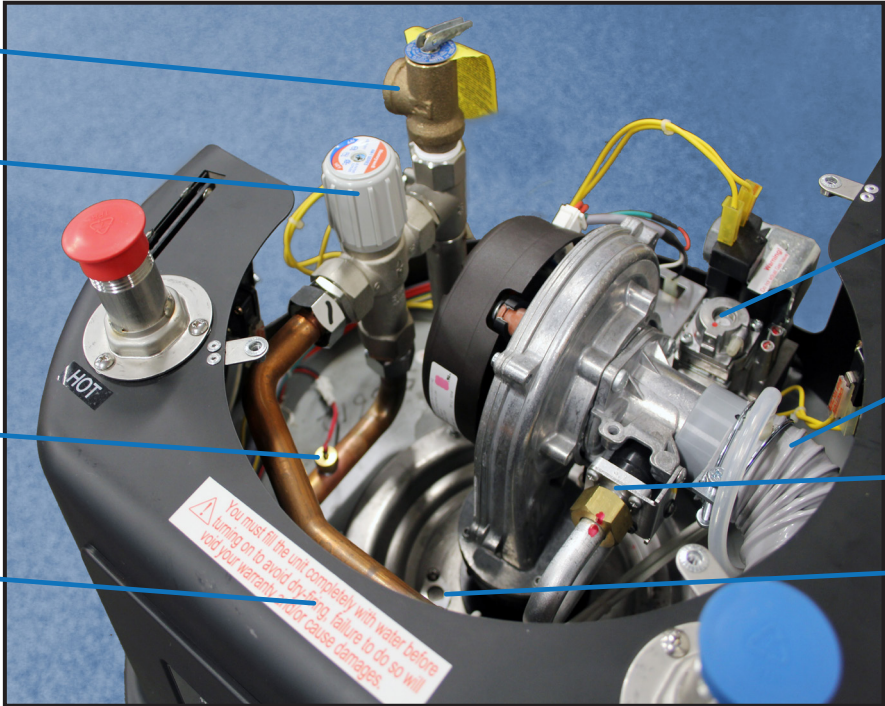


T&P Valve
and Direct
Tank Outlet

1017 ASSE
Mixing Valve

Mixed Outlet
Temperature
Sensor

Dry Firing
Warning
Label



Gas Offset
Adjustment

Direct Air
Inlet Connection

Gas Orifice
for NG/LP

Combustion
Viewing Port

HIGH EFFICIENCY **Crossover**

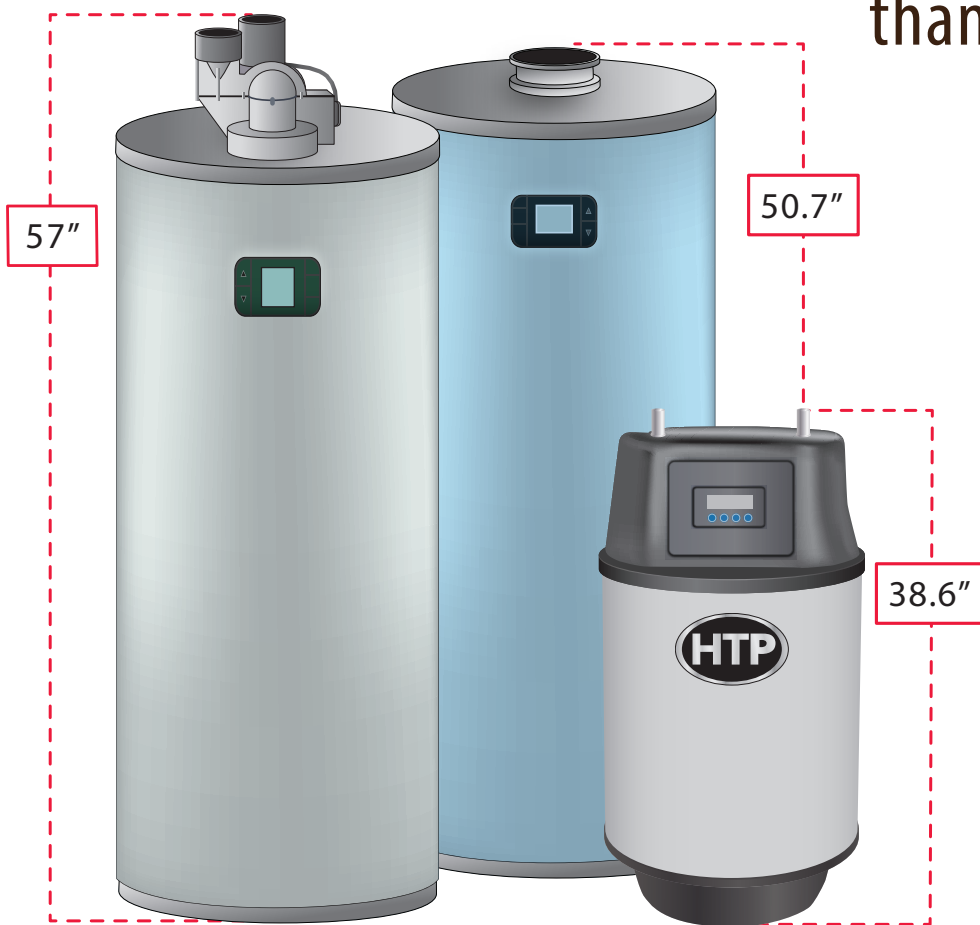


RGH-75F, RGH-76F & RGH-100F

Produce More
Hot Water than a
Standard Tank with

40%

Less Space Required
than a Standard Tank



Powerful Downward
Firing Stainless Steel
Fire Tube Heat Exchanger

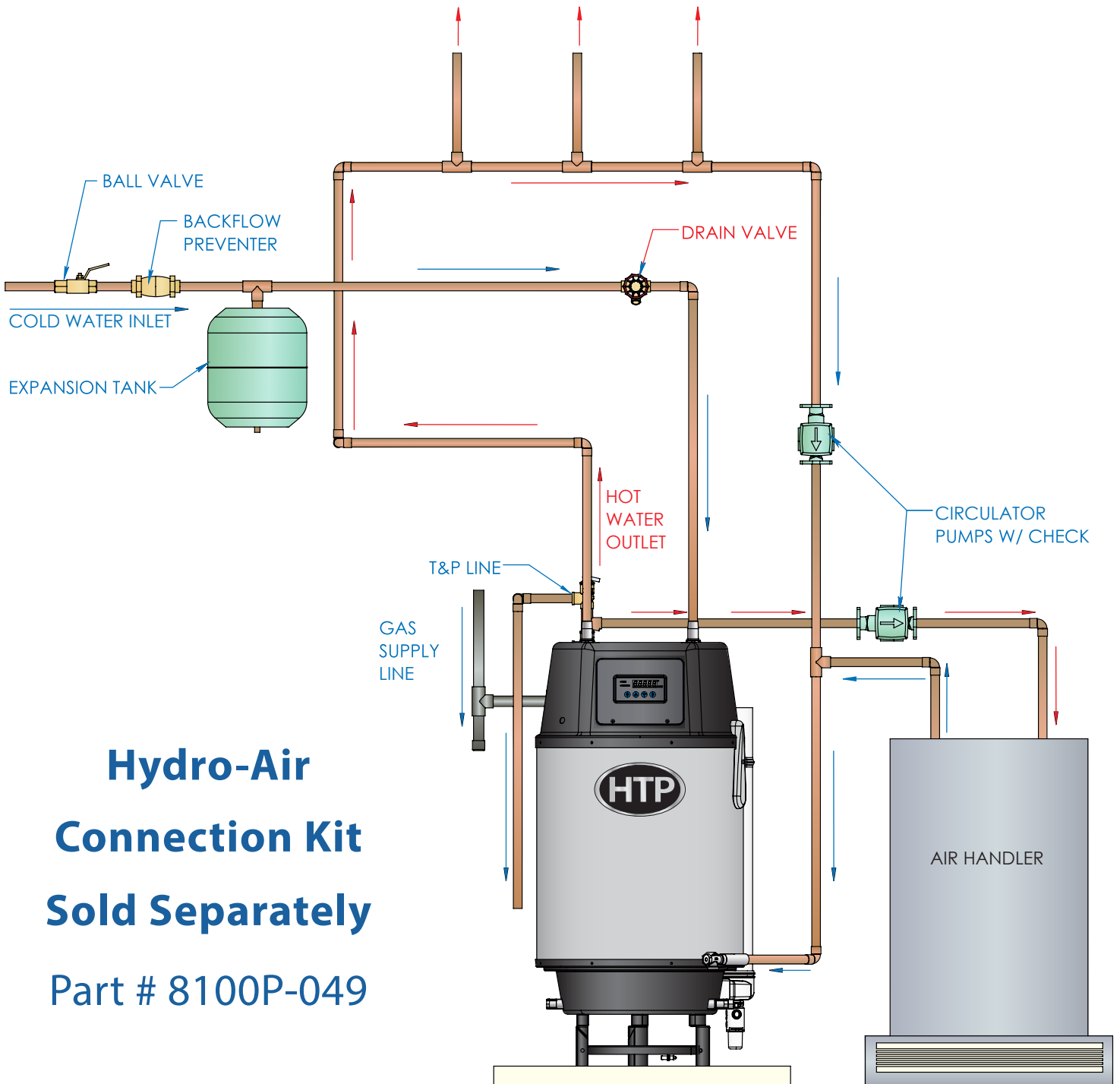
Compare the RGH with the Competition

		Crossover			Tank Type		Tankless	
		RGH-75	RGH-76	RGH-100	50 Gal. Atmospheric	50 Gal. Power Vent	199K Btuh	199 Btuh (Non Condensing)
Features	Efficiency	EF.83 UEF.88	96% TE	95% TE	.60 EF	.70 EF	.95 EF	.82 EF
	Ultra Lo NOx Complaint	YES	YES	YES	NO	NO	Varies by Model	Varies by Model
Performance	Btuh	75,000	76,000	100,000	40,000	40,000	199,000	199,000
	First Hour Rating @ 90°F Rise	107	107	130	88	90	NO	NO
	30 Gal. Dump Capabilities	YES	YES	YES	YES	YES	NO	NO
	Zero Flow Activation	YES	YES	YES	YES	YES	NO	NO
	Optional Two-Temperature Delivery Capability (with kit)	YES	YES	YES	NO	NO	NO	NO
Savings	Annual Operating Energy Cost (NG)	\$196	N/A - TE Classification	N/A - TE Classification	\$272	\$233	\$172	\$199
Materials	Tank	Stainless Steel	Stainless Steel	Stainless Steel	Glass Lined Carbon Steel	Glass Lined Carbon Steel	Stainless Steel / Copper	Copper
	Heat Exchanger	Stainless Steel	Stainless Steel	Stainless Steel	Glass Lined Carbon Steel	Glass Lined Carbon Steel	Stainless Steel / Copper	Copper
	Annual HX Anti-Scale Maintenance Required	NO	NO	NO	NO	NO	YES	YES
Installation	Venting	PVC	PVC	PVC	B-Vent	PVC	PVC	Stainless Steel Category III
	Vent Length	2" at 50'	2" at 50'	2" at 50'	3" at 50'	3" at 100'	2" at 50'	3" at 50'
	Space Saving Low Profile Vent Capability	YES	YES	YES	NO	NO	NO	NO
	Anti-Draft Direct Vent Capable	YES	YES	YES	NO	NO	YES	YES
	Field Convertible	YES	YES	YES	NO	NO	Varies	Varies
	Anti-Scald Mixer (ASSE 1017)	YES	YES	YES	NO	NO	NO	NO
Display	Digital with Error Codes	YES	YES	YES	NO	NO	Varies by Model	Varies by Model
Dimensions	Height	38.6"	38.6"	38.6"	57"	50 3/4"	23 5/8"	20 1/2"
	Diameter	21"	21"	21"	22"	24"	N/A	N/A
	Width	21"	21"	21"	22"	24"	17 3/4"	13 3/4"
	Depth	21"	21"	21"	22"	24"	11 1/4"	10 1/2"
	Weight	110 lbs.	110 lbs.	110 lbs.	165 lbs.	198 lbs.	63 lbs.	51 lbs.

THE CROSSOVER WITH AN AIR HANDLER (HYDRO AIR): DOMESTIC HOT WATER & SPACE HEATING COMBINATION

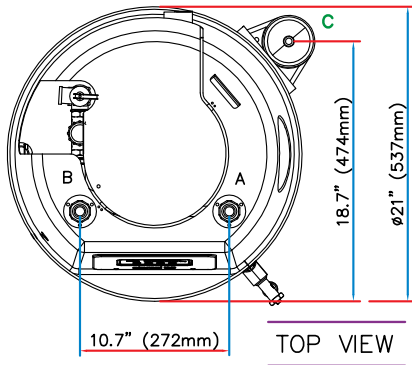
HTP's Crossover Hydro-Air System:

HTP's Crossover Water Heating technology features the best of both worlds – a tank and tankless water heater combined into one superior unit! Now add an Airhandler to the Crossover to create a complete comfort solution for domestic hot water and space heating.

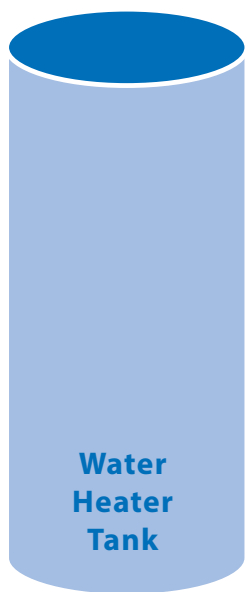
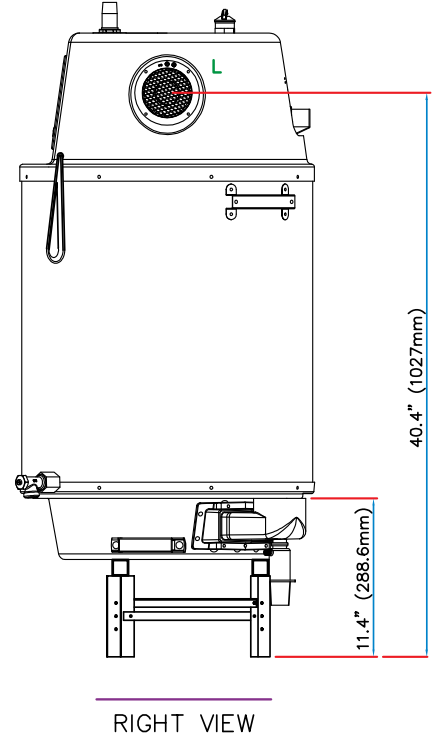
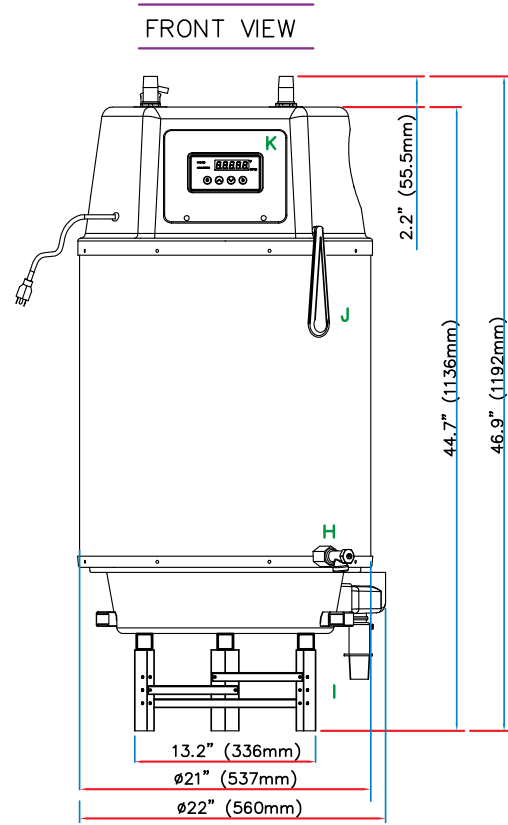
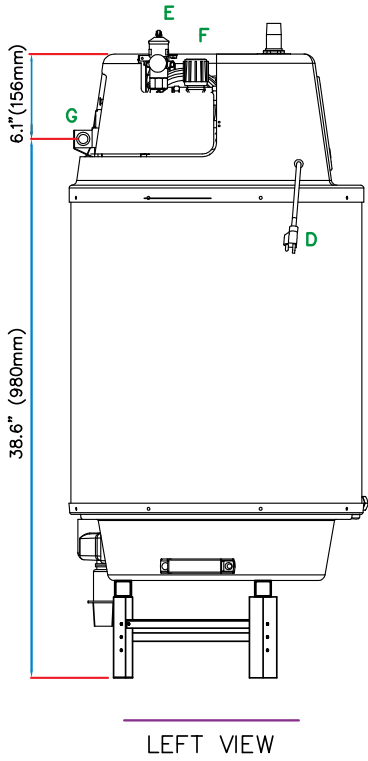


**Hydro-Air
Connection Kit
Sold Separately
Part # 8100P-049**

RGH-75F, RGH-76F & RGH-100F



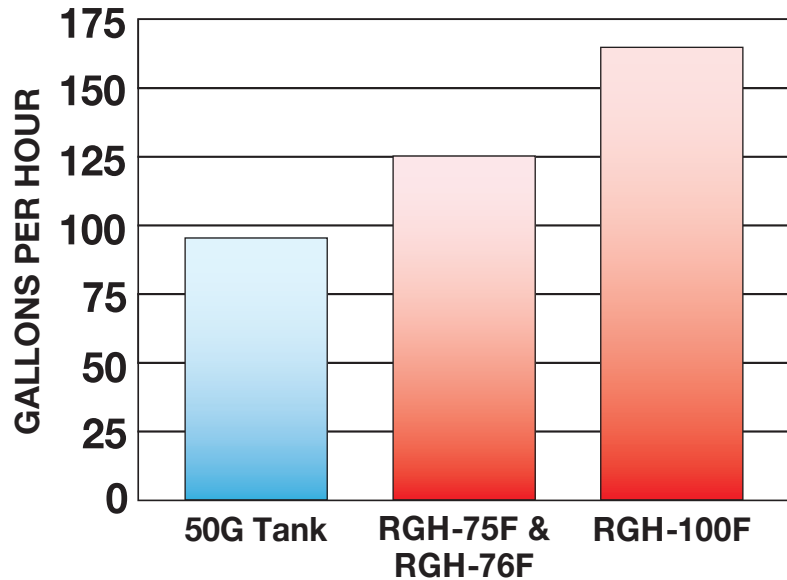
- A – Cold Water Inlet 3/4" Male NPT
- B – Hot Water Outlet 3/4" Male NPT
- C – 3" Exhaust
- D – Electric Cord
- E – T & P Valve
- F – Thermostatic Mixing Valve
- G – Gas Connection 1/2" or 3/4" Female NPT
- H – Drain Valve
- I – Condensate System 1/2" Male NPT
- J – Tank Sensor
- K – Display Control
- L – 3" Air Intake





HIGH EFFICIENCY Crossover

RGH-75F, RGH-76F & RGH-100F



Model	RGH-75F	RGH-76F	RGH-100F	
Efficiency	EF .83 (Energy Factor) • UEF .88 (U. Energy Factor)	TE 96% (Thermal Efficiency)	TE 95% (Thermal Efficiency)	
Installation	Indoor / Floor Standing			
Vent Run	3" PVC or Polypropylene	Up to 100ft, 6 Elbows Max (3" pipe) [3ft Deduction Per 45° Elbow] [5ft Deduction Per 90° Elbow]		
	2" PVC or Polypropylene	Up to 50ft, 6 Elbows Max (2" pipe) [5ft Deduction Per 45° Elbow] [8ft Deduction Per 90° Elbow]		
Condensate Discharge	2 GPH			
Condensate pH Level	4 pH			
Gas Type	Preset for NG / LP Conversion Kit Included			
Unit Connections	Gas	1/2" or 3/4" Female NPT (3/4" by 1/2" Bushing Adapter Included)		
	Water	3/4" Male NPT		
	Electricity	Dedicated 120VAC, 60Hz w/3 Pronged 5 1/2 ft. Power Cord		
	Condensate	1/2" Male NPT Connection		
Gas Input Rate	Hourly	Max: 75,000 Btuh – Min: 37,500 Btuh	Max: 76,000 Btuh – Min: 38,000 Btuh	Max: 100,000 Btuh – Min: 50,000 Btuh
Gas Supply Pressure	NG / LP	3.5" WC to 14" WC / 3.5" WC to 14" WC		
Ignition System	Spark Ignition, No Pilot			
Burner System	Single Orifice Premixed Fuel Injection Metal Fiber Infrared			
Gas Valve System	Air Ratio Negative Pressure			
First Hour Output @ 77°F / 90°F	126 Gallons / 108 Gallons	126 Gallons / 108 Gallons	160 Gallons / 130 Gallons	
Reserve Tank	20 Gallons			
Tank Material	Stainless Steel			
Temperature Sensing	Inner Tank and Hot Outlet Discharge Pipe Sensors			
Domestic Temperature Control	Thermostatic Mixing Valve - ASSE 1017 Rated			
Domestic Temperature Settings Range	120°F Factory Preset / Adjust Knob 70°F to 145°F			
Tank Storage Temperature Settings	Normal 127°F / Hotter 147°F / High Output 165°F			
Unit Dimensions (D x H)	21" x 47"			
Unit Weight	110 lbs			
Safety Devices	T&P Valve, Vent Blockage APS, Flame Rod, Fan RPM Check, Eco Burner Plate (305°F), Eco Water Limit (194°F)			
Optional Accessories	3" or 2" Horizontal Terminal, Concentric Venting Kit, Condensate Neutralizer Kit			