

High School Graduation & College Admissions



CHAIN OF LAKES

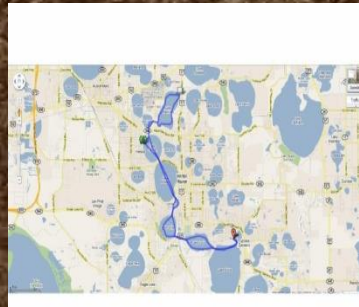
COLLEGIATE HIGH SCHOOL

Dr Peter Preston - Guidance Counselor, and Ms Josefina Mendoza - College & Career Advisor

Academic Requirements For High School Graduation & College Admission

Florida High School:

- English (4)
- Mathematics (4)
- Social Sciences (3)
- Science (3)
- PE (1.0)
 - Personal Fitness (.5)
 - Other PE (.5)
- Fine Arts (1)
- Electives (8.5)



College AA

- Communications
- Mathematics
- Humanities
- Social Sciences
- Natural Sciences
- Specific Degree Courses
- Electives
- Foreign Language (AA transfer)
 - 2 credits in same language
 - Shouldn't mix HS and College for AA transfer purposes



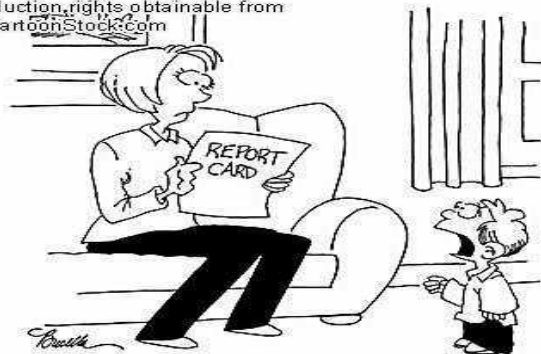
Testing

- **Test Scores are Critical!**
 - College Admissions
 - Bright Futures
 - Scholarships



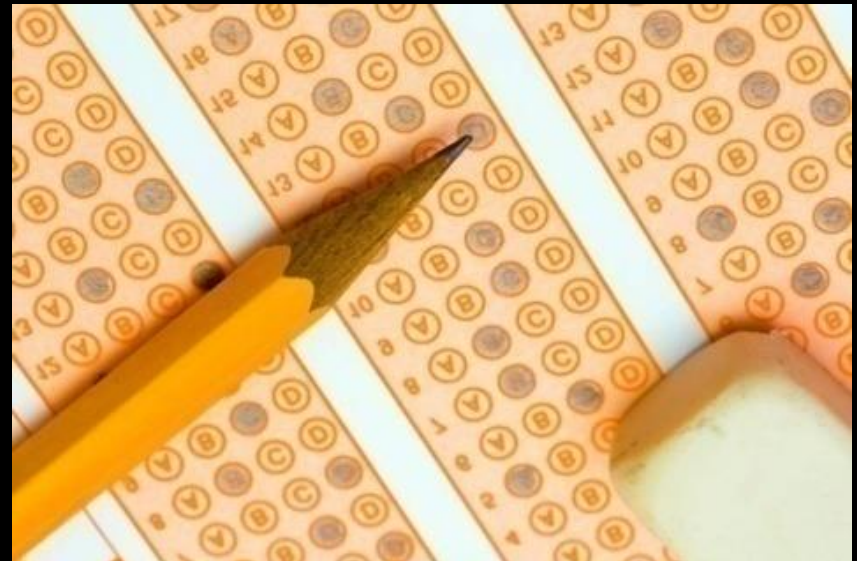
TESTING
I FIND YOUR LACK OF TESTS DISTURBING.

© Original Artist
Reproduction rights obtainable from
www.CartoonStock.com



search ID: mben732

"I'm just trying to keep pace with the plummeting test scores of my fellow students."



Practice ACT & PSAT

○ Practice ACT

- All Juniors take the Practice ACT as part of the Executive Internship class

○ PSAT (Practice SAT)

- For National Merit potentials and first-time takers
- PSAT will be offered on COL.
- Limited to 50
- Provides estimated SAT or ACT scores
- Use as diagnostic tool to identify weak areas
- Post-test meeting with Ms. Mendoza



High School Code

- It is important to include your High School Code on all testing.
- Polk State College -



Chain of Lakes Collegiate High School

HS School Code: 102075

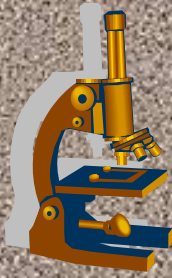


SAT / ACT Benchmarks

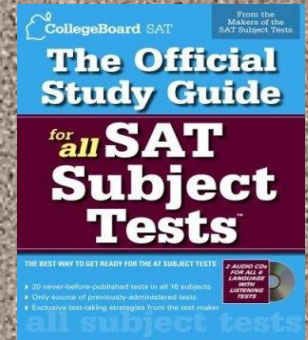


- **SAT College Readiness Benchmarks**
 - **1550** combined score – College Board Research
 - **Minimum 500 or above** on each section for major universities and competitive colleges
 - These are **MINIMUMS** only – the higher the better
 - **Goal: 600 or above** on each section for competitive schools
- **ACT College Readiness Benchmarks**
 - English – 18, Reading – 22, Math – 22, Science – 23
 - **21 composite**
 - These are **MINIMUMS** only – the higher the better
 - Most colleges will require higher scores for admission
 - **Goal: composite of 24** or above for competitive schools
- **Check SUS Matrix for specifics**
- **Colleges and universities are scrutinizing benchmark scores closely!**

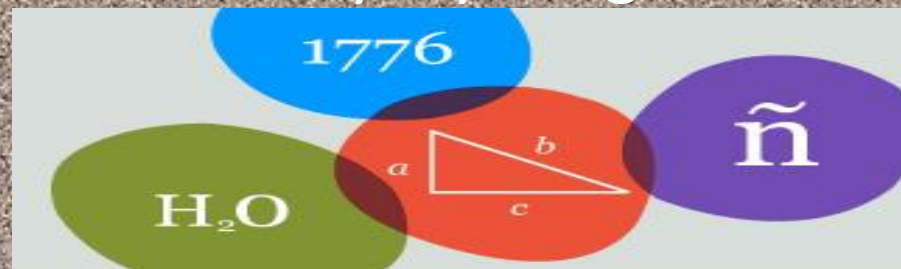
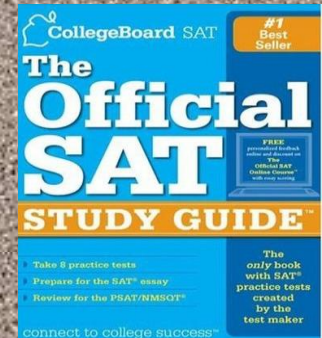




SAT Subject Area Tests



- Students encouraged to take subject area tests only if applying to highly competitive, non-Florida schools
 - Florida State universities do not consider subject area tests
 - Required for Ivy League or out of state competitive Schools
- Choose 1 or more tests in strong subjects to showcase strengths
- Can be used to showcase skills of students with native language other than English
- Required for consideration to any Ivy League school
- Fee waivers apply



SCORE REPORTS & FEE WAIVERS

- See Ms. Mendoza – College & Career Advisor
- Use Original Free Score Reports



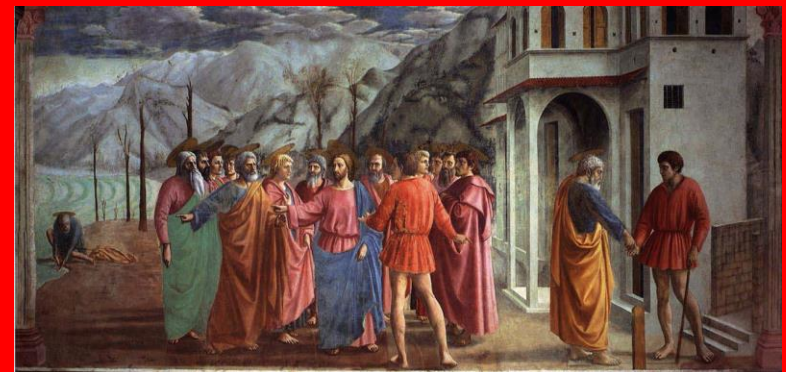
- Should send score report to any school under consideration for application
- Additional score reports after initial testing will require a fee

- **ACT & SAT Test Fee Waivers Available**

- Free & Reduced Lunch Recipients Only
- Limit 2 ACT & 2 SAT

- **College Application Fee Waivers Available**

- Free & Reduced Lunch Recipients Only
- Send with paper copy or mail for online application
- Colleges are not required to honor application fee waivers



Preparing for the ACT or SAT

Practice Tests:

www.collegeboard.com

<http://www.actstudent.org/sampletest>

www.PrincetonReview.com

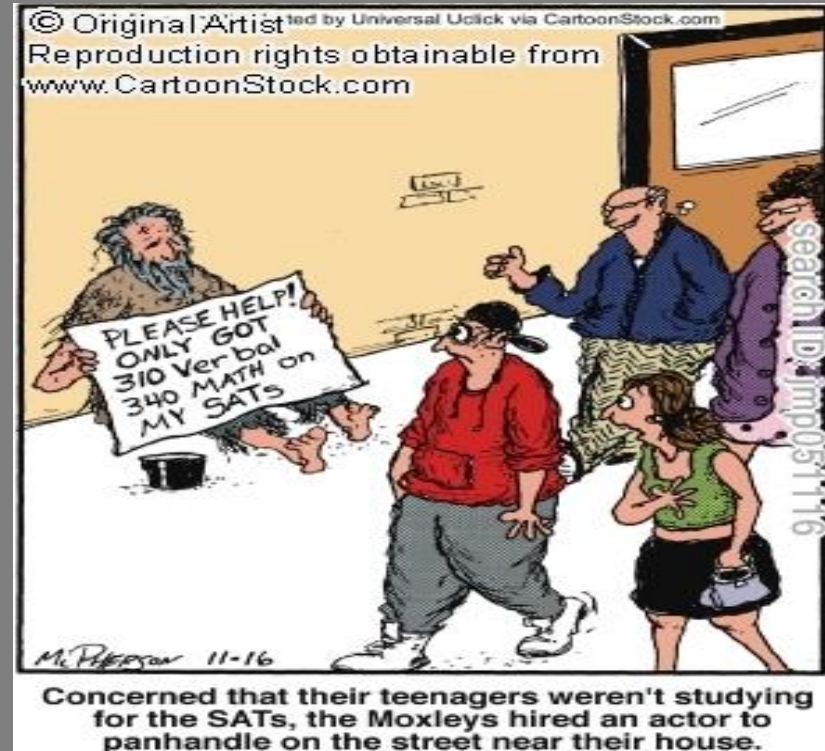
Other Sources:

Private Tutors (LRC, Kaplan, Sylvan)

Chain of Lakes CHS Lab

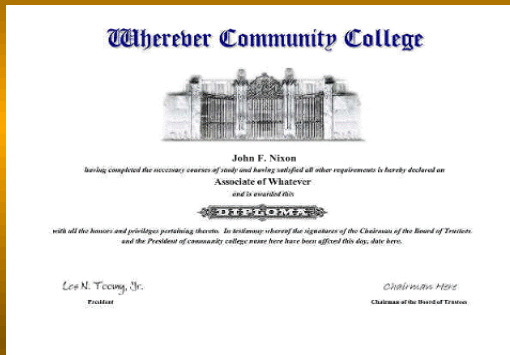
Public Library

Study Guides and CDs (most bookstores)

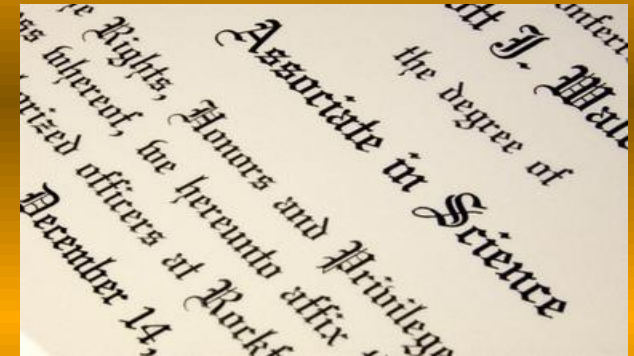


College Degree Programs





A.A. to Bachelors

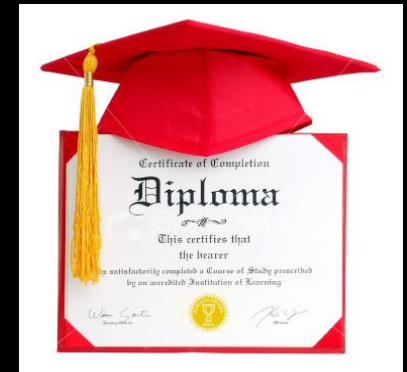


- A.A. (Associate in Arts) leads to;
- BA and BS -
 - Degree Audit:
<https://passport.polk.edu/Genesis/navigate/student2.jsp>
 - 60 Credit Hours minimum (36 Core Hours)
 - NOT A TRANSFER STUDENT: Freshman or First Time in College (FTIC) student!
 - Polk State College offers Nursing (RN to BSN), Bachelor of Applied Science (BAS), Bachelor of Science (BS): Criminal Justice:
<http://www.polk.edu/academics/degrees-and-certificates/>

High School Diploma + College Degree



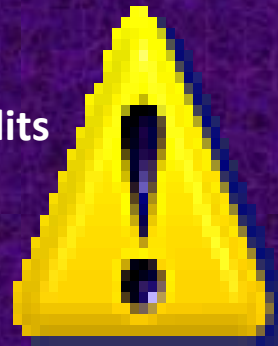
- ❑ **Finishing HS Diploma and AA**
 - ❑ Requires very rigorous college schedule including summers
 - ❑ Largely depends on degree choice, prerequisites, remaining HS credits
- ❑ **Completing “Liberal Arts” AA will rarely meet all prerequisite requirements for *specific* university degree programs**
- ❑ **Some Universities may require completion of degree-specific pre-requisites before admission to specific programs of study**
- ❑ **Most universities require meeting program GPA minimum before admission**
- ❑ **Follow individual university and college stated transfer requirements**
- ❑ **Requirements vary per school, so you must do your research!**



Withdrawing from College Courses

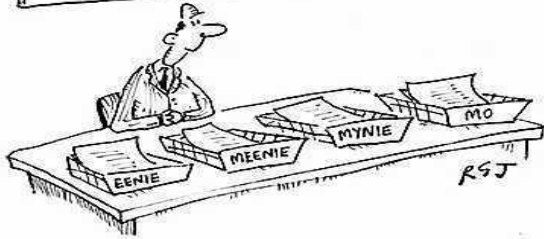


- ALL withdrawals must be completed through the COL Guidance Counselor to avoid conflicts with HS graduation requirements
- Consider taking HS course if in doubt of college-level abilities for certain credits
- Parent notification form will be required
- Students should seek tutoring/intervention at the first sign of academic trouble to avoid a withdrawal - See the Guidance Counselor or Lab Instructor!
- Number of allowed withdrawals is very limited
- College may impose out-of-state fees for duplicate college course attempts
- Student should not withdraw prematurely
- Excessive withdrawals will affect admissions decisions to colleges/universities
- Students will be required to replace missing class with a high school course/lab class



Choosing A College

© Original Artist
Reproduction rights obtainable from
www.CartoonStock.com FOR
DECISIVE THINKING



Search ID: r100788



FLORIDA ATLANTIC UNIVERSITY



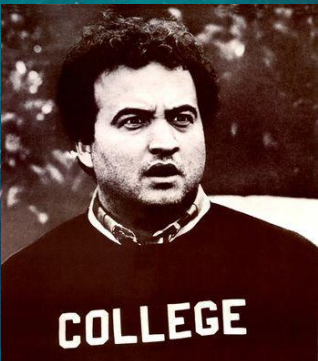
FLORIDA
POLYTECHNIC
UNIVERSITY



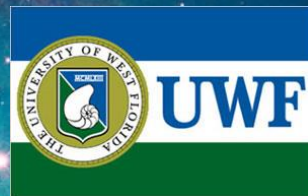
FLORIDA
GULF COAST
UNIVERSITY



New College
of Florida



USF UNIVERSITY OF
SOUTH FLORIDA



My FIU

The Average Recent College Graduate:

started college at 18.7 years old (2008)

has \$24,854 in student loans (2010-2011)

has a starting salary of \$44,455 (2013)

went to a 4-year college (71%) (2008)

is white (58%) (2011)

entered the job market at a 8.8% unemployment rate & a 18.3% underemployment rate (2013)

graduated in a nationwide class of 10,416,331, 77% of her freshman class (2010-2011)

is a woman (60%) (2013)

has four or more credit cards and over \$4,100 in credit card debt (2009)

did not have a job before graduation (74.5%) (2013)



Resident Undergraduate, Full-Time Student, two semesters (30 credit hours):

Tuition and required Fees: 2012-2013

<u>University</u>	<u>30 hours</u>	<u>Per Hour</u>
UF – Gators	\$6,142.80	\$204.76
FSU -Seminoles	\$6,402.70	\$213.42
FAMU-Rattlers	\$5,774.80	\$192.49
USF – Bulls	\$6,334.40	\$211.14
FAU – Owls	\$6,140.00	\$204.66
UWF-Argonauts	\$6,238.50	\$207.95

Resident Undergraduate, Full-Time Student, two semesters (30 credit hours):

Tuition and required Fees: 2012-2013

<u>University</u>	<u>30 hours</u>	<u>Per Hour</u>
UCF – Knights	\$6,246.90	\$207.95
FIU – Panthers	\$6,414.06	\$213.80
UNF – Ospreys	\$6,234.90	\$207.83
FGCU – Eagles	\$6,068.40	\$202.28
NCF – []	\$5,652.60	\$188.42
SUS - AVG	\$6,069.00	\$202.00

PUBLIC UNIVERSITIES OF FLORIDA: 1 of 2

Average tuition and required fees: 2006-2013

<u>YEAR</u>	<u>30 hrs</u>	<u>Per Hr</u>	<u>Increase</u>
2012-13	\$6,069.00	\$207.00	12.5%
2011-12	\$5,531.00	\$184.00	11.5%
2010-11	\$4,936.00	\$165.00	13.8%
2009-10	\$4,350.80	\$145.03	15.1%
2008-09	\$3,808.07	\$126.94	8.1%
2007-08	\$3,523.03	\$117.43	5.1%
2006-07	\$3,350.43	\$111.68	3.5%

PUBLIC UNIVERSITIES OF FLORIDA: 2 of 2

Average tuition and required fees: 2000-2006

<u>YEAR</u>	<u>30 hrs</u>	<u>Per Hr</u>	<u>Increase</u>
2005-06	\$3,238.40	\$107.95	5.3%
2004-05	\$3,074.56	\$102.49	6.5%
2003-04	\$2,887.34	\$96.42	7.3%
2002-03	\$2690.75	\$89.69	5.1%
2001-02	\$2,559.18	\$85.31	8.3%
2000-01	\$2,364.06	\$78.80	N/A

TOTAL 2000 to 2013 change: 162.7%

College Choice Considerations

- **Size**

- Consider smaller state universities as a good option

- **Public vs. Private**

- **LOCATION**

- **Distance from home**

- **Costs and Scholarships and Financial Aid**

- Don't rule out private colleges - many have money to give

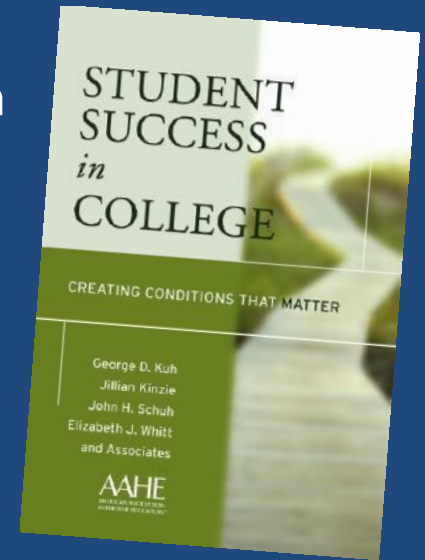
- **Student Population**

- **Majors and Requirements**

- **Athletics and Events**

- **Current educational climate in Florida requires students and parents to be pro-active!**

- **Research, Research, Research!**





College Visits

- **COL College Rep Visits**
 - Check College Visit Calendar
 - Contact Ms. Mendoza
- **College Tours**
 - Schedule online on college websites
 - Important part of choosing a college
- **Preview Weekends**
 - Check on college websites for dates
 - Excused HS absence

COLLEGE VISITSSM

www.college-visits.com

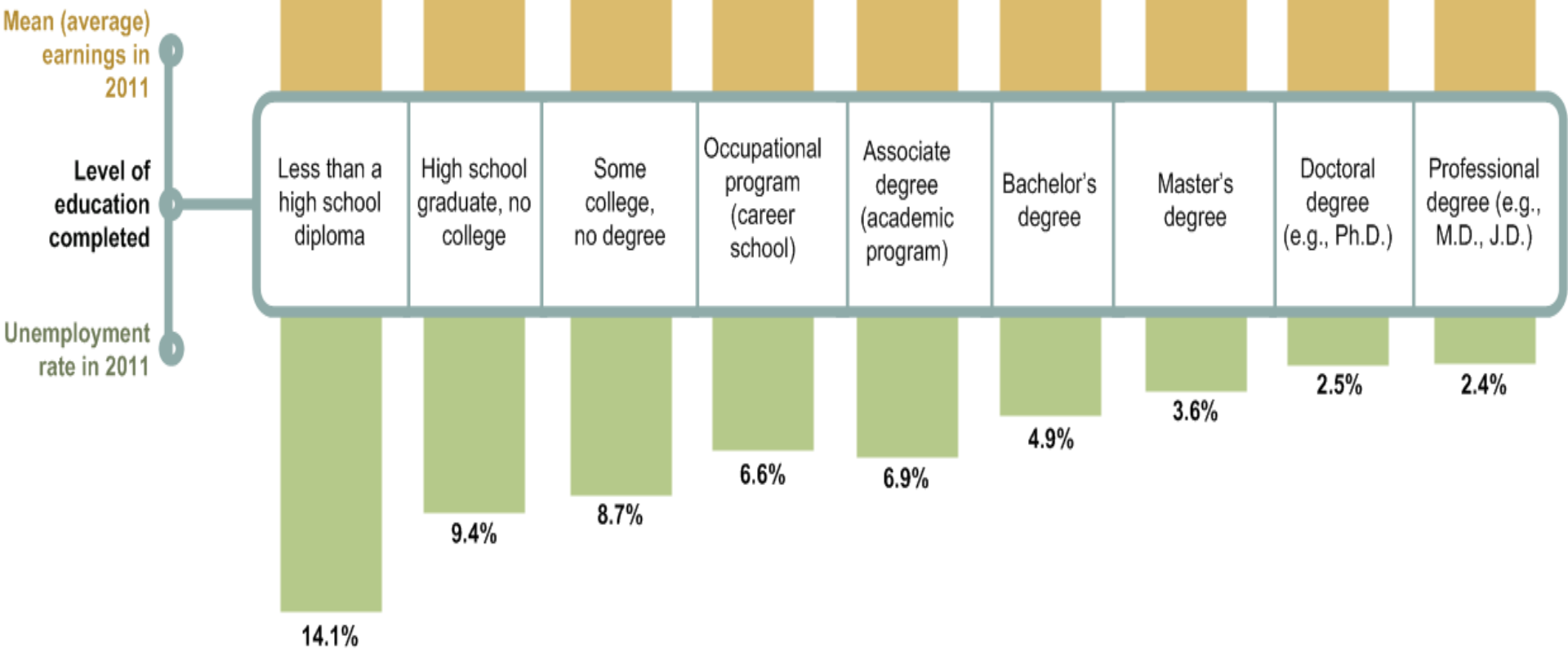




Why go to college?

Can't I get a good job now?

Yes, maybe you could, but a college degree will make your chances even better. Check out the earnings and unemployment rates for people 25 years and older with different levels of education:



College Admission Criteria

- **Grade Point Average (GPA): Weighted vs. Unweighted vs. ???**
- **Standardized Test Scores (SAT, ACT, etceteras ad nauseum)**
- **“Rigorous” curriculum including AP, IB, Dual Enrollment, etc.**
- **Higher level math & science courses are a plus!**

○ **College Admissions Essay**

○ **Extracurricular Activities**

○ **Community Service**

**SEE SUS
MATRIX**

○ **Most look at students “holistically” but you must meet GPA and Testing minimums**

○ **State Universities are very competitive due to funding issues & enrollment caps**

○ **Apply as a “Freshmen” in most cases**

○ **Apply to more than one College &/or University!**



"I want to show my colleges I'm well-rounded, so I wrote a poem in Spanish about how chess club has made me a better quarterback."

Sample College Resume

Amanda Student

123 College Street, State College, PA 12345
555-555-555 e: amandastudent@school.edu

EDUCATION: Bachelor of Arts, Advertising Degree
anticipated May 2016

State University, Philadelphia, Pennsylvania
Current GPA 3.53

EXPERIENCE:

Summer Intern, June 2012 to August 2012
ABC Communications, New York, New York

Partnered with design intern to create and execute two sell sheets, one print ad, and one postcard
Created and presented collaborative intern campaign to entire agency and founders of organization
Awarded best campaign of competing teams
Wrote radio script submitted with campaign proposal and assisted in other writing assignments

Shift Supervisor / Trained Barista, September 2011 to present
Coffee Shop, State College, PA

Trained new employees, opened and closed store, handled total sales, built satisfied customer relationships

Server, Hostess, Expeditor, Busser, May 2010 to September 2011
Generic Restaurant, Washington, D.C.

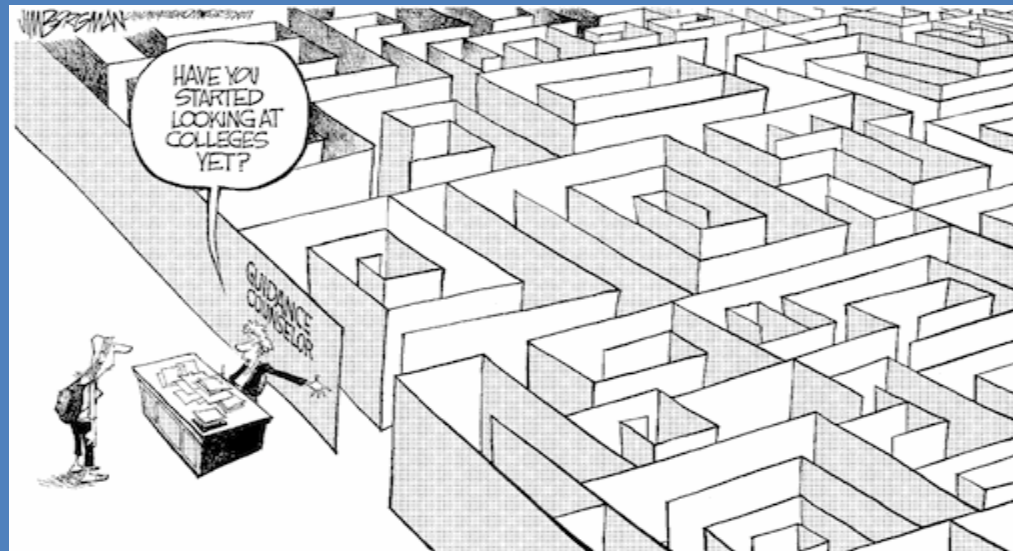
Created customer base and close relationships with patrons of restaurant
Provided prompt service while taking orders, serving food and closing the check

AWARDS AND ACHIEVEMENTS

Dean's List - Fall 2011, Spring 2011

Awarded best advertising campaign proposal for A Foundation, ABC Communications, Summer 2011

Awarded best advertising campaign proposal for Health & Wellness Committee, State University, Spring 2010



© Original Artist
Reproduction rights obtainable from
www.CartoonStock.com



search ID: aban423

"I read your college application essay. First of all the word 'COLLEGE' has two 'L's.'"

SAMPLE ESSAY STEMS FROM UF:

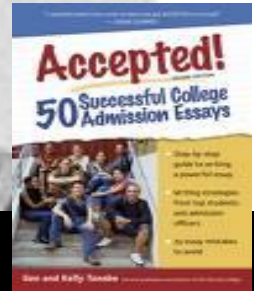
Describe an activity, interest, experience, or achievement in your life (this could be a book, movie or an activity or experience at work, home or school) that has been particularly meaningful to you.

On November 18, 2011, a group of my friends and I returned home from my birthday dinner at a local steakhouse. Upon our arrival, it was suggested that we watch the movie Fight Club. As if it were meant to be, we discovered that Fight Club was to be aired in a matter of minutes on one of the multitude of Home Box Office channels. We proceeded to...

What qualities or unique characteristics do you possess that would allow you to contribute to the university community?

In order to contribute to a community of any size or structure, some aspect of said community must be made better. This can be something as simple as cleaning up refuse or as profound as changing the way people live their lives. Regardless of the magnitude by which one seeks to better their community, certain attentiveness to detail must be present...

Types of Admissions

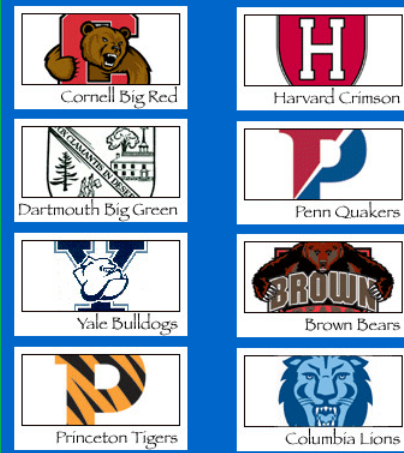


- **Early Decision**
 - Varies by university and may involve set commitment to attend
 - Rarely used
- **Rolling Admissions**
 - Per year/semester
- **Summer Admission**
 - For students who may not meet expected criteria of fall applicants
- **Fall Admission**
 - Most Competitive
- **First Time in College (FTIC) or Transfer**
 - Students with AA degree but don't meet freshmen admissions standards
 - Students with 12 credit hrs or more beyond HS graduation
- **Communicate with admissions office throughout the admissions process!**



IVY LEAGUE SCHOOLS

- See guidance/career staff if you are interested.
- Samples of actual applications available from guidance office.
- Requires:
 - Near-Perfect GPA
 - Extremely high test scores
 - Multiple subject area tests with high scores
 - Local interview – if application moves forward



Important Timelines

- **Admissions**
 - Apply Early!
 - Slim chance of admissions if deadlines are missed
 - Admissions Deposits
 - Check SUS Matrix
- **Scholarships/Financial Aid**
 - Apply Early!
 - Check FAFSA Deadlines
- **Housing**
 - Apply Early!
 - Housing Deposits
 - Check SUS Matrix

“Senioritis”



- Final transcript review occurs in Spring of Senior year
 - Final HS transcripts must be requested from COL office week before graduation
- Offers of Admission may be rescinded if student earns poor grades or “Ws” during last semester!
- Student should not change course plan without consulting admissions office!
- Parents and Students - Be Vigilant!



The System

www.systemcomic.com

KNOW YOUR WORDS:
Senioritis



SENIORITIS: Slacking off when nearing the end of a position or term.



Symptoms include: Blank stares, lax attire and reading comics during work.



Often confused with SENORITIS: The urge to call everyone names *en Español*.



MONEY FOR COLLEGE



**NEVER PAY FOR
FINANCIAL AID /
SCHOLARSHIP
SEARCHES!**

Net Price Calculators

- All universities and colleges must have in place by 2011
- Allows families to calculate estimated cost to attend a particular school
- Provides direct comparison of costs from one school to another
- Available on college websites



FINANCIAL AID OPTIONS

- Federal Grants (FAFSA)
 - www.FAFSA.ed.gov ONLY!!
- Bright Futures (State Aid)
- Florida Pre-Paid (Varies by Plan)
- Scholarships (Private/Public)
- Private Grants
 - Parent or student employer benefits?
- Work Study
- Loans



Bright Futures

get yours!

- **Eligibility**

- See Official Bright Futures Website

- <http://www.floridastudentfinancialaid.org/SSFAD/bf/>

- Florida Universities and Colleges only

- Set up Account at: www.flvc.org

- All Seniors MUST register online after Dec 1st of Senior Year at: www.floridastudentfinancialaid.org

- Help Line: 1-888-827-2004

**Bright
Futures
Funding
HAS
CHANGED**

- **Programs/Awards**

- Florida Academic Scholars (FAS) Set \$ Amount

- Florida Medallion Scholars (FMS) Set \$ Amount

- Florida Gold Seal (GSV) Set \$ Amount





**Florida Bright Futures Program
 SAT / ACT Score Requirements**

High School Graduation Year	SAT	ACT
Florida Academic Scholars (FAS)		
2012-13	1280	28
2013-14 and thereafter	1290	29
Florida Medallion Scholars (FMS)		
2012-13	1020	22
2013-14 and thereafter	1170	26

NEW

ADDITIONAL BRIGHT FUTURES REQUIREMENTS

- **Community Service Hours**

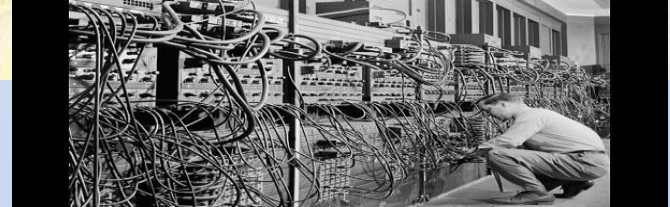
- FAS – 100 hours
- FMS – 75 hours
- GSV – 30 hours

- **FAFSA Requirement**

- Students are no longer required to submit a complete, error-free FAFSA, for Bright Futures and renewal eligibility any time prior to disbursement.



Log on to Learn More



- www.flvc.org (Academic Advising)
- <http://www.floridastudentfinancialaid.org/SSFAD/bf/>
(Florida Bright Futures)
- www.collegeboard.com (SAT)
- www.act.org (ACT)
- www.florida.access.bridges.com (Career inventory)
- www.bls.gov (Career Info.)
- www.fastweb.com (Scholarships)
- Individual University/College Websites!



COL CHS Website

- Check It Out!
 - www.colpsc.com
 - Updated Regularly
 - Important Announcements
 - Helpful Links
 - Scholarship Information
 - Teacher Pages
 - College & Career Page
 - Scholarship Lists
 - Admissions Information
 - etc.
 - Guidance Page
 - etc.

CHAIN OF LAKES
BUILDING

CONTACTS



Dr Peter Preston – Guidance Counselor

Phone: 298-6800 ext. 2846

Email: ppreston@polk.edu

Office WCL-132



Ms Josefina Mendoza – College/Career Advisor

Phone: 297-6800 ext. 5232

Email: jmendoza@polk.edu

Office WCL-133



© MARK ANDERSON

WWW.ANDERTOONS.COM



"OK, I'll take one more question and then I'll begin backpedaling."

