



**Hilco**<sup>TM</sup> Industrial



Prefer click-to-bid? Register and bid on



# WEBCAST/ONSITE AUCTION

*Former assets of Brown-Minneapolis Tank (BMT) – NW*



## Major Large-Plate Fabricator of Tanks & Structures



**Tuesday, October 7<sup>th</sup>  
10:00 am Local Time  
Elma, Washington**



**Hilco**<sup>TM</sup>  
Industrial

31555 West Fourteen Mile Road, Suite 301  
Farmington Hills, Michigan 48334 USA  
Ph 248-254-9999 • Fx 248-254-9995

**[www.hilcoind.com](http://www.hilcoind.com)**



A Hilco Global Company  
Vested in Your Success

Former assets of Brown-Minneapolis Tank (BMT) – NW



## **AUCTION DATE**

**TUESDAY, OCTOBER 7<sup>TH</sup>**  
**BEGINNING AT 10AM LOCAL TIME**

## **PREVIEW DATE**

**MONDAY, OCTOBER 6<sup>TH</sup>**  
**8AM TO 4PM LOCAL TIME**

FOR EARLIER INSPECTION, PLEASE CONTACT  
MARK REYNOLDS AT 205-595-5999 OR EMAIL  
MREYNOLDS@HILCOGLOBAL.COM

## **AUCTION & PREVIEW LOCATION**

**100 TOWER BLVD, SUITE 101**  
**ELMA, WA 98541**

Bid Onsite or  
Bid remotely with HilCast

Prefer click-to-bid?  
Register and bid on



## **DIRECTIONS**

**FROM SEATTLE-TACOMA AIRPORT:** EXIT AIRPORT TO I-5 S (57 MILES) TO STATE RTE 8 W (21 MILES). CONTINUE ONTO US-12 W. TAKE THE 3RD ST EXIT TOWARD SATSOP DEVELOPMENT PARK AND TURN LEFT ONTO 3RD ST. CONTINUE ONTO TO WAKEFIELD RD, THEN TURN RIGHT ONTO LAMBERT RD. TURN LEFT ONTO OLYMPIC VIEW RD, THEN LEFT ONTO TOWER RD. FOLLOW SIGNS TO AUCTION SITE.

## **FURTHER INFORMATION**

- AN 18% BUYER'S PREMIUM WILL BE CHARGED ON ALL ASSETS. THE BUYER'S PREMIUM WILL BE REDUCED TO 16% FOR PAYMENTS MADE BY MEANS OF CASH, CASHIER'S CHECK, COMPANY CHECK (WITH BANK LETTER OF GUARANTEE) OR WIRE TRANSFER WITHIN 48 HOURS OF SALE CLOSE. AUCTION WILL BE CONDUCTED IN ENGLISH, ACCEPTING U.S. CURRENCY ONLY.
- REMOVAL DEADLINE IS FRIDAY, NOVEMBER 7<sup>TH</sup> WITH HOURS OF REMOVAL BETWEEN 8AM TO 4PM MONDAY THRU FRIDAY. BUYERS WITH ITEMS LEFT ON SITE AFTER DEADLINE ARE SUBJECT TO FINES OF \$500 PER DAY.

## **MACHINERY & EQUIPMENT**

MARK REYNOLDS 205-595-5999 • MREYNOLDS@HILCOGLOBAL.COM

## **PAYMENT INFORMATION**

LESIA JOSEPH 616-328-6892 • LJOSEPH@HILCOGLOBAL.COM  
HILCO ACCOUNTS RECEIVABLE AT AR-GR@HILCOGLOBAL.COM

## **CUSTOMER SERVICE**

+1 877-37-HILCO • +1 616-732-1800 • INFO@HILCOIND.COM  
SANDI NEELY AT 248-254-9999 X16 • SNEELY@HILCOGLOBAL.COM

*Information contained herein deemed to be accurate at time of printing and subject to change.  
For updated information, please visit our website at [www.hilcoind.com](http://www.hilcoind.com) for any changes to date, sale process, terms and conditions and list of available assets.*

## **PLATE BENDING & ANGLE ROLLS**



## **PLATE BENDING & ANGLE ROLLS**

- 1 – KLING MODEL NO. 6, 20'-2" X 1/2" PYRAMID TYPE PLATE BENDING ROLL, S/N 2355, 17" Top Roll Diameter, 12" Bottom Roll Diameter, 21" Max Clearance Between Housings, 40-HP Mechanical Geared Drive, Custom Manual Adjustable Backrest Stand
- 1 – PULLMAX MODEL PV7H 10' X 1" PYRAMID TYPE HYDRAULIC PLATE BENDING ROLL, S/N 4462 (1981), Roll Diameter 14-3/4", Roll Bending Capacity 10' x 74" OD x 1", Cone Bending Capacity 10' x 1/2", Hydraulic Top Roll Adjustment
- 1 – WEBB MODEL 6L-54 10' X 3/8" INITIAL TYPE PLATE BENDING ROLL, 10" Roll Diameter, 10-HP Mechanical Geared Drive, Reversing, Air Drop End, Hydraulic Adjustable Backrest & Front Feed Tables
- 1 – 6' PYRAMID TYPE PLATE BENDING ROLL, S/N N/A, 8" Roll Diameter, Manual Top Roll Adjustment
- 1 – ROUND MODEL R5S 5" X 5" X 1/2" ANGLE BENDING ROLL, S/N 884355 (1988), Reversing, Pendant Control
- 1 – 48" PYRAMID TYPE POWER SLIPFORM MACHINE, S/N N/A, 5" Top Roll Diameter, 3" Bottom Roll Diameter, Manual Top Roll Adjustment, AC Motorized Drive w/ Pendant Control







## SHEARS

- 1 – **AMERICAN HERCULES 12' X 12" HYDRAULIC POWER SQUARING SHEAR**, S/N 5001440675176, 40-HP Hydraulic Power Unit, Holddowns, No Back Gauge
- 1 – **CINCINNATI MODEL 2510 10' X 3/8" MECHANICAL POWER SQUARING SHEAR**, S/N 40710, Front Operated Power Back Gauge, 105" Squaring Arm, 26" Table, 20" Throat, Holddowns

## PRESS BRAKE

- 1 – **PACIFIC MODEL K300-14 300 TON X 14' HYDRAULIC PRESS BRAKE**, S/N 6921, Rating 5/16" x 14', 150" Between Housings, Max Ram Die Wt. 1.5 Tons

## IRONWORKERS

- 1 – **GEKA MODEL HYDRACROP 110/A HYDRAULIC IRONWORKER**, S/N 15691 (1995), 110 Ton, Angle Capacity 6"x 6" x 9/16", Flats – 24" x 5/8", Rounds – 2", Squares – 2", Punch 1" – 1/2" x 3/4"
- 1 – **MUBEA MODEL KBLH500 HYDRAULIC IRONWORKER**, S/N 0156184906215, 55 Ton, Angle Capacity 5" x 5" x 1/2", Rounds 1-3/8", Squares 1-1/4", Flats 7" x 13/16" – 16" x 1/2", Cope 2-3/4" x 1-9/16" x 1/2", Punch 1-1/4" x 17/32" – 1-1/8" x 9/16"

## FLANGERS

- 1 – **RELIABLE WELDING WORKS C-FRAME HEAD FLANGER**, S/N N/A, Throat Depth Adjustable to 72" Max
- 1 – **WEBB MODEL M5 1/2" OFFSET FLANGER**, S/N 8072, Mechanical Geared Drive, Reversing, w/ Adjustable Tank Cradle / Infeed Carrier
- 1 – **BLUE VALLEY MODEL FLANGER 4 3/8" HEAD FLANGER**, S/N 1289, Throat Depth Adjustable to 72" Max

## CNC PLASMA CUTTER

- 1 – **TORCHMATE CNC SINGLE TORCH PLASMA CUTTING TABLE**, 11' x 42' Water Type Cutting Table, 2-Axis Servo Drive w/ Torchmate Optiflex 320 CNC Cutting System PC Control, Hypertherm Powermax 1650 Plasma Cutting Power Supply, S/N 1650-008636



## SHOT BLAST SYSTEM

- 1 – **TOP HAND MODEL 266025-B AIR BLAST SHOT BLAST SYSTEM**, S/N 266025-B (2009), Booth Dimensions 26' High x 60' Long x 25' Wide, Drive-Thru w/ Double End Manual Swing Doors, Shot Reclaim System w/ Open Floor Grating, (2) Main Collector Screw Conveyors, & (1) Cross-Over / Elevator Feed Screw Conveyor, Reclaim Elevator, (2) Axiom 6.5CF Blast Pots, S/N's 24L-5427 & 24L-5428, (2) Blast Guns & Hoods, Breathing Air Filter w/ Marco Carbon Monoxide Tester, Baghouse System w/ New York Blower Size 44PLR 75-HP Blower, 40,000 CFM, Pneumatic Pulse-Jet Type
- 1 – **MODEL SHOP BUILT 15' X 30' BLAST BOOTH CART**, Non-Motorized, Manual Travel, Track Riding Casters



2009



## PAINT BOOTH & PAINT SUPPORT EQUIPMENT

- 1 – **TOP HAND MODEL 266025-P PAINT BOOTH**, S/N 266025-P (2009), Booth Dimensions 26' High x 60' Long x 25' Wide, Drive Thru w/ Double End Manual Swing Doors, (4) Side Access Walk-In Doors, Fire Suppression System, Exhaust Ventilation System w/ (3) 20-HP Blowers & Ductwork, w/ ICE Model BMA-236 HRS Industrial Air Make-Up Unit, S/N 03097336A, Propane Gas Burner, 7,040.0 MBH Max – 282.0 MBH Min Firing Rate, Air Velocity 1500 FPM Min. – 4250 FPM Max, 50-HP Blower
- 1 – **GRACO MODEL XTREME MIX ELECTRONIC PROPORTIONER 2-PART PAINT MIXING & PUMPING SYSTEM**, S/N A462, (2) King Series 68:1 Pumps, Max Air WPR .7MPa, 7 Bar, 100 PSI, Max Fluid WPR 46.9 MPa 469 Bar, 6800 PSI, est. 50' Delivery Hose & Gun
- 1 – **GRACO MODEL REACTOR E-30 PLURAL COMPONENT PROPORTIONER MIXING SYSTEM**, S/N A1560, Part No. 259058, Series L12F, Max Outlet Fluid WPG 13.8 MPa, 138 Bar, 2000 PSI, w/ (2) T2 2:1 Transfer Pumps, Microprocessor Control Pads, Est. 50' Delivery Hose w/ Gun
- 2 – **GRACO MODEL 243283 AIRLESS PAINT SPRAY GUNS**, Sold with Assorted Gun Repair Kits and (2) 14"X 50' Airless Hose

## WELDING

- 1 – **DIGITAL WELDING SYSTEMS AUTOMATIC TRAVELING HEAD PLATE SEAM WELDER**, S/N N/A, w/ (2) Fronius Type Trans Pulse Synergic 5000 Welding Power Supplies, Each w/ Type VR7000-4R Automatic Wire Feed Heads, S/N's 18374337 & 18353478, Type RCU-4000 Microprocessor Control Pendants, Welding Guns Mounted On Single Travelling Carriage, 30' Head Travel, w/ Arc Products Model 0600-0201 Seam Tracking Microprocessor Advanced Programming Controller, S/N 07080056, Overhead Lifting Framework, Full Length Operator's Catwalk, w/ (2) 32' Long Custom Air Actuated Back-Up I-Beam Bars
- 2 – **LINCOLN MODEL NA-3N TRAVELING HEAD AUTOMATIC WIRE FEED SEAM WELDERS**, Mounted On Fabricated Steel Structure w/ Manual Swing-Out & Chain Hoist Rail Elevation, w/ Lincoln Electric Model DC-1000 Variable Voltage / Constant Voltage DC Welding Power Supply, S/N AC822209, AC557623
- 1 – **CART MOUNTED EXTENDED BOOM SUBMERGED ARC WELDING SYSTEM**, 4' x 9' Cart Base w/ AC Electric Mechanical Power Drive, V-Groove Steel Casters, 16' Boom Length, Flux System, Lincoln LN-9 Wire Feeder, Note – Welding Power Supply Sold Separately
- 1 – **WALL MOUNTED TRAVELING SUBMERGED ARC SEAM WELDER**, S/N N/A, Estimated 110' Travel, Riding Operator's Platform w/ Lincoln NA-5 Arc Welder, Lincoln LN-25 Wire Feeder, Lincoln LN-7 Wire Feeder, Invincible Flux System, Floor Located Lincoln Idealarc DC1000 Constant Voltage / Constant Current Welding Power Supply, S/N U1010776782

**HUGE QUANTITY OF WELDERS AND WELDING SUPPLIES, Including:** Welders and Power Sources: Lincoln, Red-D-Arc, Miller, Omark, Airco; Acorn Weld Tables, Wire Feeders, Flux Hoppers, Welding Guns, Weld Wire, Welding Rod, Etc.



2009



## PLASMA CUTTERS

- 1 – **KOIKE ARONSON NO. 108 TORCH CUTTING RADIOGRAPH TORCH CUTTING SYSTEM**, S/N 7472, Speed 4/50 IPM, 110 AC Volts, 50/60 HZ, .5 Amps
- 1 – **BERNARD MODEL 3500-SS PLASMA CUTTER**, S/N 9110
- 1 – **ESAB MODEL PCM-1125 PLASMA CUTTER**, S/N PF-J227076
- 2 – **HYPERTHERM PLASMA CUTTERS**, Model Powermax 1250 S/N 1250-122400, Model Powermax 1650 S/N 1650-026905
- 1 – **BUG-O-SYSTEMS MODEL MPD-1000 STRAIGHT MODULAR DRIVE PROGRAMMABLE PLASMA CUTTING SYSTEM**, S/N 00112038007-A, w/ Controller, Stand, and (3) 93" Tracks

**QUANTITY OF** Cutting Torches, Torch Cutting Radiographs, Etc.

## TANK TURNING ROLLS

- 1 – **TANK FIT-UP / ASSEMBLY TURNING ROLL**, S/N N/A, Estimated 95' Overall Length, 12-1/2" Diameter Steel Rolls On 5-1/2' Horizontal Center Spacing, (4) 17' Long Roll Sections + (1) 21' Long Roll Section, Independent End AC Mechanical Roll Drives w/ Pendant Control, Hydraulic End Compression Rams, 2) Manual Traveling Fit-Up Carriages w/ Hydraulic Clamping, Hydraulic Power Unit, Gardner Denver Pneumatic Winch, (1) Portable Hydraulic Power Unit w/ Woods E-Trac AC Inverter
- 4 – **TANK TURNING ROLLS**, Set-Up Consists of (1) Power Turning Roll, To 20" Wide Roll Face x 22" Diameter, Rubber Coated Rolls, AC Mechanical Drive, Pendant Control, Stationary Base, (3) Idler Turning Rolls, To 13" Wide Roll Face x 22" Diameter, Rubber Coated Rolls, (3) with Steel V-Groove Caster Base, (1) with Stationary Base, \*Note – Roll Set-Up May Be Offered As A Set, or in Individual Pieces
- 2 – **TANK TURNING ROLLS**, S/N N/A, (1) Pair Turning Rolls Including (1) Power Roll (1) Idler Roll, 14" Roll Face x 12" Diameter, Rubber Coated Rolls, (1) with AC Motor Drive w/ Pendant Control, (1) with AC Mechanical Drive, Stationary Base
- 1 – **RUBBER TIRED TANK FIT-UP TURNING ROLL**, S/N N/A, Estimated 45' Overall Length, Independent AC Mechanical Drive On Each End, Reversible, (1) Drive Roll Shaft, (1) Idler Roll Shaft On 5' Horizontal Center Spacing, (8 Sets) 6.00-9 Solid Rubber Tires
- 4 – **RUBBER TIRED TANK FIT-UP TURNING ROLLS**, To 30' Overall Length, Single End AC Mechanical Drive, (1) Drive Roll Shaft, (1) Idler Roll Shaft On 6' / 7' Horizontal Center Spacing, (2) with 7.00-14 Foam Filled Tires, (2) with Solid Rubber Tires







## CRANES & HOISTS

- 2 – JLG MODEL 1500P PANAVIEW 15 TON CAPACITY PEDESTAL MOUNT HYDRAULIC CRANES, 15 Ton Maximum Capacity, 10' – 66' Telescopic Boom, 32' Lattice Frame Tower Structure, 50-HP AC Electric
- 1 – EDERER 10 TON CAPACITY X EST. 38' SPAN TOP RIDING DOUBLE GIRDER BRIDGE CRANE, Pendant Control
- 1 – ROBBINS & MYERS 10 TON CAPACITY X EST. 42' SPAN TOP RIDING DOUBLE GIRDER BRIDGE CRANE
- 1 – NORTHWESTERN 10 TON CAPACITY X EST. 45' SPAN TOP RIDING DOUBLE GIRDER BRIDGE CRANE, Robbins & Myers Hoist
- 1 – OUTDOOR CRANEWAY STRUCTURE, Estimated 80' Long x 35' Span x 38' Height
- 1 – YALE MODEL FEW20-18G10S4 20 TON CAPACITY ELECTRIC CABLE HOIST, S/N AZ220031, Speed 10 FPM, w/ Manual Trolley
- 3 – YALE 15 TON CAPACITY ELECTRIC CABLE HOISTS, S/Ns AZ220085, AZ220099, AZ220057, Speed 10 / 15 FPM, w/ Manual Trolley
- 5 – YALE 10 TON CAPACITY ELECTRIC CABLE HOISTS, S/Ns AZ220052, AZ220096, AZ220088, AZ220087, AZ220092, Speed 10 FPM, w/ Manual Trolley

**LARGE QUANTITY OF** Spreader Bars, Manual & Electric Chain Hoists 1/2 to 3 Ton, Chain, Cable, Plate Grabbers, & Beam Clamp Lifting Devices to 17', Chain Tensioners, C-Hooks, Etc.



2002



## MOBILE, TOWER & MARINE CRANES

- 1 – GCI MODEL 5400 30 TON CAPACITY TOWER CRANE, S/N 1276, AC Electric, Capacity: 32' Boom @ 10' Radius 60,000 Lbs, 80' Boom @ 75' Radius 4,000 Lbs, 4 Stage Telescopic Tower, 1st Working Height Hook Height 0-Degree -60' / 75-Degree 133', 2nd Working Height Hook Height 0-Degree 82' / Degree 156', 3rd Working Height Hook Height 0-Degree 109' / 75-Degree 183', 4th Working Height Hook Height 0-Degree 136' / 75-Degree 211', Radius 10' Min – 75.3' Max, Boom 32' to 80'
- 1 – GROVE MODEL RT65S 35 TON RUBBER TIRED HYDRAULIC CRANE, S/N 30410, 34' – 136' Main Boom, 32' Lattice Swing-Away Jib, 3208 CAT Diesel, Auxiliary Winch, 29.5-25 Pneumatic Tires, 35-Ton 3-Sheave Block, Ball, 3982 Hours Indicated
- 1 – MANTIS MODEL 3612 SPAN DECK 18 TON TELESCOPIC BOOM HYDRAULIC CRAWLER CRANE, S/N 36137 (2002), 28' – 70' 4-Stage Telescopic Boom, 15' Fold-Under Jib, 36,000 Lb. Lift Capacity, Deutz Diesel, 28' Wide Rubber Crawler Tracks, Johnson 15-Ton 3-Sheave Block, PAT DS150 LMI, 4812 Hours Indicated
- 1 – DROTT MODEL 500A1 TRAVELIFT 50,000 LB. MOBILE GANTRY CRANE, S/N 2074, Cummins 4BT 110-2500 Diesel (Reconditioned 2006), 49x17 Rubber Tires, 25' Inside Clear Width, 33' Overall Outside Width, 25' Inside Clear Height, 24' Wheelbase Center-to-Center, 29' Overall Length, 23' Hook Travel, Hook Block 10'
- 1 – DROTT MODEL 500A1 TRAVELIFT 30,000 LB. MOBILE GANTRY CRANE, S/N 2218, 4-53 Detroit Diesel Power Unit, Note – Disassembled

## MARINE HOISTS

- 1 – MARINE TRAVELIFT MODEL 35BFM 70,000 LB. MOBILE BOAT HOIST, S/N 2318 589, Ford Industrial 6-Cylinder Gas Engine, 46x16 Rubber Tires, 18'-6" Clear Inside Width, 23'-5" Overall Outside Width, 20' Clear Inside Height, 21'-10" Overall Outside Height, 18'-7" Wheelbase Center-to-Center, 27" Overall Length, Hoist Travel 18'
- 1 – MARINE TRAVELIFT MODEL 30AMO 60,000 LB. MOBILE BOAT HOIST, S/N 1640480, Ford Industrial 6-Cylinder Gas Engine, 46x16 Foam Filled Tires, 17' Clear Inside Width, 23'-4" Overall Outside Width, 18' Clear Inside Height, 20' Overall Outside Height, 15'-2" Wheelbase Center-to-Center, 22'-8" Overall Length





# TRACTORS & TRUCKS • TRAILERS • FORKLIFTS & ROLLING STOCK



## TRACTORS & TRUCKS

- 1 – **MACK MODEL CH613 TANDEM AXLE DAY CAB SEMI TRACTOR**, S/N 1M2AA18Y2TW062823 (1996), E7-427 Mack Diesel, Maxtorque T2130 13-Speed, Mack 10-Leaf Camelback Springs, PTO, Headache Rack, Tulsa Hydraulic Winch, 741,906 Miles Indicated
- 1 – **INTERNATIONAL MODEL S2600 TANDEM AXLE SEMI TRACTOR**, S/N N/A, Cummins NTC-400, 10 Speed, Hendrickson Springs, Full Double Frame, Dual Hydraulic Power Steering, PTO / Wet Kit
- 1 – **FORD MODEL F800 SINGLE AXLE BOOM TRUCK**, VIN 1FDPF82K1FVA57616 (1985), V-8 Gas, 5x2 Transmission, PTO, 11' Steel Deck Flatbed, w/ Pittman HydraLift Model HL-170 Hydraulic Crane, 8-Ton Capacity, 37'-4" Max.
- 1 – **GMC MODEL 7000 FORWARD SINGLE CABOVER FLATBED TRUCK**, VIN J8DM7A1N5E3100807 (1984), Isuzu Diesel, 5x2, Dual Rear Wheels, 28' Wood Deck Flatbed, 29,760 GVWR, 181,859 Miles Indicated
- 1 – **FORD MODEL F450 SUPER DUTY TIRE SERVICE TRUCK**, VIN 2FDLF47G2PCA96234 (1993), V-8 Gas, 5-Speed, Dual Rear Wheels, PTO, 10' Steel Flatbed, w/ Collins Behind-Cab Mounted Knuckleboom Crane, Wisconsin Gas Engine Air Compressor, Air Tank
- 1 – **FORD MODEL F450 SUPER DUTY TILT BED FLATBED TRUCK**, VIN 1FDLF47F0SEA17301 (1995), Power Stroke Diesel, 5-Speed, Dual Rear Wheels, A/C, PTO, 12' Tilt Bed Flatbed w/ Winch
- 1 – **FORD MODEL F250 WELDING TRUCK**, VIN 1FTTT25G6FPA15645 (1985), Gas, 4-Speed, Single Rear Wheel, Custom 8' Steel Bed w/ Lincoln SA-200 Gas Powered Arc Welder, S/N A916749
- 1 – **MODEL SIERRA 2500 SLE 4X4 EXTENDED CAB PICKUP TRUCK**, VIN 2GTFK29K551551844 (1995), 5.7L V-8, PW, PL, AC, 194461 Miles Indicated
- 1 – **YARD SPOTTER**, S/N N/A, 3208 CAT Diesel, Hydraulic 5th Wheel w/ Air Pin Release

## TRAILERS

- 1 – **P & J TANDEM AXLE 5TH WHEEL GOOSENECK FLATBED TRAILER**, VIN 108790, 28' Flat Wood Deck, Dual 235/80R16 Tires, Electric Brakes, Stow-Away Ramps
- 2 – **UTILITY 45' TANDEM AXLE SINGLE DROP DECK FLATBED TRAILERS**, VINs 1UYFS2455JA878901 (1987), N/A
- 1 – **HOBBS 45' TANDEM AXLE FLATBED TRAILER**, VIN 1H5P04525GM022301
- 1 – **AZTECH 44' TANDEM AXLE FLATBED TRAILER**, VIN 1AZ2M2A11H1018646 (1987), Spring Slider, Wood Deck, 11R22.5 Tires, Steel Budd Wheels
- 1 – **44' TANDEM AXLE SINGLE DROP DECK FLATBED TRAILER**
- 1 – **32' TANDEM AXLE 5TH WHEEL GOOSENECK FLATBED TRAILER**
- 2 – **32' TANDEM AXLE DROP DECK FLATBED TRAILERS**
- 1 – **TRANSCRAFT MODEL DTX-19-42 42' TANDEM AXLE SINGLE DROP FLATBED TRAILER**, VIN 1TTE42209B1018131 (1981)
- 1 – **TANDEM AXLE DROP DECK CHASSIS TRAILER**
- 1 – **OFFICE TRAILER**, Est. 10' x 40', w/ AC Electrical Panel Box & Air Conditioner, Note – No Axles Included

## FORKLIFTS & ROLLING STOCK

- 1 – **HYSTER MODEL H210XL 18,850 LB. CAPACITY DIESEL FORKLIFT TRUCK**, S/N E007D04636Y (2001), 147.6" Lift, 158" Mast Height, Monotrol Shift Transmission, 10.00-20 Solid Tires, 8' Forks, Hydraulic Fork Positioning, Truck Weight 30,260 Lbs., 5422 Hours Indicated
- 1 – **KOMATSU MODEL FG45T-8 7,432 LB. CAPACITY LPG FORKLIFT TRUCK**, S/N 135677A, 185" Lift, 3-Stage Mast, Solid Cushion Tires – 300-15 F / 7.00-12 R, 60" Forks, Side Shift, 3,408 Hours
- 1 – **CLARK 8,000 LB. CAPACITY LPG FORKLIFT TRUCK**, Solid Tires, 2-Stage Mast, 48" Forks
- 1 – **DAEWOO MODEL G25S-2 5,000 LB. CAPACITY LPG FORKLIFT TRUCK**, S/N 12-04749, 188" Lift, 3-Stage Mast, Solid Tires – Dual Fronts, Side Shift, 42" Forks
- 1 – **HYSTER MODEL H50XL 4,550 LB. CAPACITY LPG FORKLIFT TRUCK**, S/N B177B1890L, 187" Lift, 3-Stage Mast, Solid Cushion Tires, Monotrol Shift Transmission, 46" Forks, Note – Not Running
- 1 – **CLARK MODEL CGC30 2,700 LB. CAPACITY LPG FORKLIFT TRUCK**, S/N C365LI-0290-9484FB (1997), 4-Stage Mast, 294" Lift, Solid Tires, Side Shift, 42" Forks
- 1 – **SNORKEL LIFT MODEL TB-A80RD TELESCOPIC BOOM AERIAL LIFT**, S/N 9001170490, 80' Maximum Platform Height, 500 Lb. Maximum Capacity, 2WD, Deutz Diesel – Type F41912-491, 30" x 92" Platform Size, 15x22.5 Foam Filled Tires, 0755.9 Hours Indicated
- 1 – **JLG MODEL 2646-E ELECTRIC SCISSOR LIFT**, S/N 0200038937 (1998), 26' Maximum Platform Height, 750 Lb. Capacity, 24 Volt

**QUANTITY OF MATERIAL HANDLING EQUIPMENT, Including:** 800-lb Capacity Man Basket, 36" x 28", Spare Forks & Fork Extensions, Spare Parts, Etc.





## TOOL ROOM & FABRICATING

- 1 - KALAMAZOO MODEL VTH-21 TILT FRAME VERTICAL BAND SAW, S/N 80-47-2, 21" Maximum Height Under Guide, Hydraulic Head Infeed, Power Clamping, Manual Tilt, Coolant, Gravity Roller Conveyor Table
- 1 - JET MODEL JBG-8A 8" DOUBLE END, PEDESTAL GRINDER, S/N 12020219, 1 HP
- 1 - PULLMAX MODEL X91 PLATE BEVELER, S/N N/A, Capacities: Mild Steel 1", Stainless Steel 5/8", Beveling Angle 25-55 Degrees
- 1 - VOGEL MODEL 25CSP HYDRAULIC CAGE-STYLE POWER UNIT, Pipe Notcher, S/N CSP254118 (1995), With Table
- 1 - CARLTON 4' ARM X 11" COLUMN RADIAL ARM DRILL, S/N 1A2158
- 1 - ROTAB MODEL 36 UNIVERSAL ROTARY TABLE, S/N 4811, Tilting, Variable Speed, Reversing, Pendant Control

**HUGE QUANTITY OF TOOL ROOM EQUIPMENT, Including:** Double End Pedestal Grinders, Drills, Belt & Disc Sanders, Saws, Punches, Nibblers, Rotary Tables, Nailers, Angle Grinders, Drills, Power Tools, Hand Tools, Etc.

**QUANTITY OF FABRICATING EQUIPMENT, Including:** Plate Bevelers, Arbor Press, Pipe Threaders: Ridgid, Oster, Toledo, Northern Industrial Electric, Tubing Benders, Hose Repair Equipment, Bracket Benders, Etc.



## AIR HANDLING

- 1 - ROGERS MODEL QNW-V-150F 150-HP ROTARY SCREW AIR COMPRESSOR, S/N 0906514363 (2006), Toshiba H9 Variable Speed Drive, Air Cooled, Open Skid Base, Microprocessor Control
- 1 - ROGERS MODEL QNW-G-503F 125-HP ROTARY SCREW AIR COMPRESSOR, S/N 0906514366 (2008), Air Cooled, Open Skid Base, Microprocessor Control
- 1 - INGERSOLL RAND MODEL SSR350H-AAF13S 97-HP ROTARY SCREW AIR COMPRESSOR, S/N 21503078A, 350 CFM, 125 PSIG, 460/60/3, Not Under Power
- 1 - SULLAIR MODEL 16-60H 60-HP ROTARY SCREW AIR COMPRESSOR, S/N 46951-EG1, 115/125 PSIG, 460/60/3, Not Under Power
- 1 - KOBALT MODEL K7060HFV VERTICAL TANK MOUNTED AIR COMPRESSOR, S/N 144845, 3.5-HP, 13.3 SCFM @ 90 PSI, 60-Gallon Tank
- 1 - INGERSOLL RAND MODEL 160 PORTABLE DIESEL POWERED AIR COMPRESSOR, S/N 143728-U84-179, John Deere Diesel
- 1 - 5-HP HORIZONTAL TANK MOUNTED AIR COMPRESSOR, S/N N/A
- 1 - ZEKS MODEL 1000HSFA400 REFRIGERATED COMPRESSED AIR DRYER, S/N 322519
- 2 - COMPRESSED AIR RECEIVERS, S/Ns 15602, 15603, Volume Capacity 2900 Gallons, MAWP 250 PSI @ 150° F



## PLANT SUPPORT

- 1 - STRONG MANUFACTURING FILLERMATE CONCRETE TANK FILLING SYSTEM, S/N N/A, Twin Shaft Mixer w/ 18" Diameter x 48" Long Ribbon Paddle Blade Mixers, Discharge Hopper w/ Est. 20-HP Screw Type Pump, Est. 30'-2-1/2" Discharge Hose, Operator's Platform
- 1 - ELECTRODE STABILIZING OVEN, 5' X 5' X 3'
- 1 - KEEN MODEL K-450 ELECTRODE STABILIZING OVEN, S/N 707314, 120 Volt, Single Phase
- 2 - MODEL LRO-10-110/220 ELECTRODE STABILIZING OVENS
- 1 - FIREGUARD 2-PART YARD FUEL TANK, S/N 781, Overall Size 48' x 47' High x 102', 2) Fill-Rite Model FR700V 115 Volt AC Fuel Transfer Pumps, Vents
- 1 - CARGOCAIRE MODEL HC-1125-EA HONEYCOMBE DEHUMIDIFIER, S/N 1616 (1992), w/ Desitech Microprocessor Control System
- 2 - EZ-GO 2-PASSENGER ELECTRIC GOLF CARTS, S/Ns 578825, 703613, (1) w/ 2-Passenger Rear Seat, Soft Side Enclosures
- 1 - TENNANT MODEL 95 POWER FLOOR SWEEPER, S/N HD3214, Gasoline Engine, Rider Type
- 1 - MODEL 27 KLEEN PUSH TYPE FLOOR SWEEPER, Pulley Driven
- 1 - WEDGE GAS POWERED WALK-BEHIND CONCRETE SAW, S/N N/A, Wisconsin V-4 Gas Engine

**QUANTITY OF PLANT SUPPORT EQUIPMENT, Including:** Portable Sandblasters, Pneumatic Winches, Fuel Dispensers, Oil / Water Separators, Pumps, Hydraulic Power Units, Ladders, Jacks, Toolboxes, Pallet Jacks, Carts, Jobboxes, Pallet Racking, Cantilever Racking, Adjustable Shelving, Cabinets, Spare Parts, Etc.



## BULK METAL SCRAP

**LARGE QUANTITY OF CARBON & STAINLESS STEEL:**

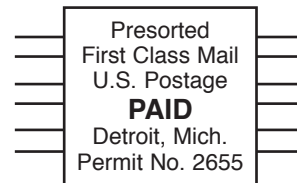
**Plate • Structural Pipe  
Out-of-Service Equipment • Flanges, Etc.**

To Make an Offer to Purchase Scrap Metal Now,  
Contact Mark Reynolds at 205-595-5999  
or Email [mreynolds@hilcoglobal.com](mailto:mreynolds@hilcoglobal.com)





31555 W. Fourteen Mile Road, Suite 301  
Farmington Hills, MI 48334  
Ph: 248-254-9999  
Fx: 248-254-9995  
www.hilcoind.com



Forwarding Service Requested

# Hilco Industrial **WEBCAST/ONSITE AUCTION**

Former assets of Brown-Minneapolis Tank (BMT) – NW



## Major Large-Plate Fabricator of Tanks & Structures



**Tuesday, October 7<sup>th</sup>**  
**10:00 am Local Time**  
**Elma, Washington**



### Terms of Sale

An 18% buyer's premium will be charged on all assets. The buyer's premium will be reduced to 16% for all onsite and Hilco Webcast buyers for payments made by means of cash, cashier's check, company check (with bank letter of guarantee) or wire transfer within 48 hours of sale close. An 18% buyer's premium will be charged for all BidSpotter purchases with no discount for prompt payment. Everything will be sold to the highest bidder for cash, in accordance with the Auctioneer's customary "Terms of Sale", copies of which will be posted on the premises of the sale and subject to additional terms announced the day of sale. All items will be sold "as is, where-is" without any warranties, expressed or implied. Although obtained from sources deemed reliable, the Auctioneer makes no warranty or guarantee to the accuracy of the information herein contained. Bidders are encouraged to thoroughly inspect the items on which they intend to bid prior to sale. Absolutely no items will be removed until the day after the conclusion of the sale and payment is made in full. Subject to additions, deletions and prior sale. For updated information, please visit our website at [www.hilcoind.com](http://www.hilcoind.com) for any changes to date, sale process, terms and conditions and list of available assets.

**Payment:** INVOICES WILL BE EMAILED WITHIN 24 HOURS AFTER THE AUCTION CLOSES. Payment is to be made to Hilco Industrial, LLC. Payment Options: VISA, Mastercard or Discover accepted – if invoice total is \$2,000 or less; Wire Transfer; Certified Check; or Company Check (with Bank letter of guarantee – see sample letter below). All sales are subject to sales tax. Purchasers claiming exemptions from taxes must provide proof satisfactory to the Auctioneer of their entitlement to claim such exemptions. Please see complete terms and conditions on our website, [www.hilcoind.com](http://www.hilcoind.com).

### Sample Bank Letter

(Bank Name) unconditionally guarantees payment to Hilco Industrial from (Company Name). This guarantee will be valid for purchases made at the Auction of Brown-Minneapolis Tank on October 7, 2014.



HILCO Industrial is a division of Hilco Global • Headquarters 5 Revere Drive, Ste. 206 • Northbrook, IL 60062 • All rights reserved  
Hilco Industrial, LLC Washington Auctioneer & License: Tim Pfister License #2923 • WA License #2382 • IL License #444.000215  
Printed in USA • BMT2822 • Please visit our website at [www.hilcoind.com](http://www.hilcoind.com) to review our complete terms and conditions.

A Hilco Global Company  
Vested in Your Success