

WEBCAST/ONSITE AUCTION



Complete Polystyrene Processing Facility

Pelletizing Lines, Bulk Material Storage and Transfer, Chemical Processing, Plant & Production Support, Rolling Stock, Lab Equipment



Thursday, October 8th • 10:00 am Local Time
Springfield (Indian Orchard), MA

Sale Offered in Partnership with



www.redstonemoore.com



Hilco™ Industrial

Phone +1 248-254-9999

www.hilcoind.com



A Hilco Global Company
Vested in Your Success



AUCTION DATE

THURSDAY, OCTOBER 8TH
BEGINNING AT 10AM LOCAL TIME

PREVIEW DATE

TUESDAY & WEDNESDAY, OCTOBER 6TH & 7TH
9AM TO 4PM LOCAL & MORNING OF SALE

FOR EARLIER INSPECTION, PLEASE CONTACT
JOHN MAGNUSON AT +1 847-504-3204 OR
EMAIL JMAGNUSON@HILCOGLOBAL.COM

AUCTION LOCATION

SHERATON SPRINGFIELD HOTEL
ONE MONARCH PLACE
SPRINGFIELD, MA 01144

ASSET & PREVIEW LOCATION

950 WORCESTER ST
INDIAN ORCHARD, MA 01151

FURTHER INFORMATION

- A 16% BUYER'S PREMIUM WILL BE CHARGED ON ALL ASSETS WHEN PAYMENT IS MADE BY MEANS OF CASH, CASHIER'S CHECK, COMPANY CHECK (WITH BANK LETTER OF GUARANTEE) OR WIRE TRANSFER WITHIN 48 HOURS OF SALE CLOSE. AN 18% BUYER'S PREMIUM WILL BE CHARGED ON ALL ASSETS WHEN PAYMENT IS MADE BY CREDIT CARD (ACCEPTED FOR INVOICES OF \$2000 OR LESS), OR WHEN PAYMENT IS RECEIVED AFTER 48 HOURS OF SALE CLOSE. AN 18% BUYER'S PREMIUM WILL BE CHARGED FOR ALL BIDSPOTTER PURCHASES WITH NO DISCOUNT FOR PROMPT PAYMENT. AUCTION WILL BE CONDUCTED IN ENGLISH, ACCEPTING U.S. CURRENCY ONLY.
- REMOVAL DEADLINE IS FRIDAY, NOVEMBER 6TH WITH HOURS OF REMOVAL BETWEEN 8AM TO 4PM MONDAY THRU FRIDAY. BUYERS WITH ITEMS LEFT ON SITE AFTER DEADLINE ARE SUBJECT TO FINES OF \$500 PER DAY.

MACHINERY & EQUIPMENT

JOHN MAGNUSON +1 847-504-3204 • JMAGNUSON@HILCOGLOBAL.COM

PAYMENT INFORMATION

LESIA JOSEPH 616-328-6892 • LJOSEPH@HILCOGLOBAL.COM
HILCO ACCOUNTS RECEIVABLE AT AR-GR@HILCOGLOBAL.COM

CUSTOMER SERVICE

+1 877-37-HILCO • +1 616-732-1800 • INFO@HILCOIND.COM

*Information contained herein deemed to be accurate at time of printing and subject to change.
For updated information, please visit our website at www.hilcoind.com for any changes to
date, sale process, terms and conditions and list of available assets.*

BULK LOAD/UNLOAD SYSTEMS



BULK LOAD/UNLOAD SYSTEMS

1 – CARBIS TANKER TRUCK LOAD/UNLOAD SYSTEM, 4' x 24' x 10'6" SAF-T Operator Platform, 4' x 6' x 2'9" SAF-T Cage, Gangway Capacity: 500-Lb., Max. Truck Clearance: 13'6", Galvanized Steel Construction, 114" Loading Arm with 3" Stainless Steel Flex Hose, (4) Scully Grounding Units with (2) Sculon Junction Box Plug & Cable Units, (4) Blackmer Pumps, Allen Bradley PanelView Plus 600 PLC, Emergency Eyewash/Shower Station

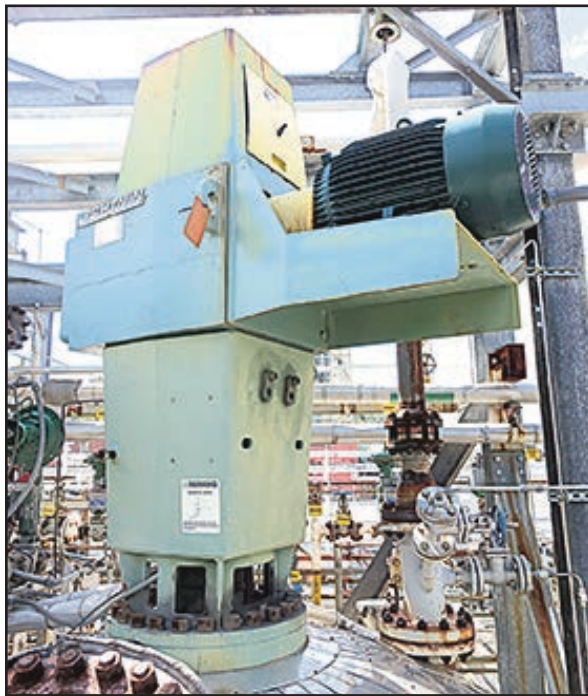
1 – CARBIS RAIL CAR LOAD/UNLOAD SYSTEM, 8'6" x 20' x 13' Operator Platform, 22" x 70" (Approx.) Gangway, Galvanized Steel Construction, (3) Scully Grounding Units, (2) 40-HP Durco Pumps, Allen Bradley PanelView Plus 600 PLC, MSA Chillgard RT Refrigerant Monitor, Emergency Shower Station

VESSELS • MIXERS / AGITATORS



VESSELS

- 1 – STEEL-PRO 28,858-GALLON HORIZONTAL CARBON STEEL VESSEL, S/N 18302 (2008), NB#1405, Diameter: 12', MAWP: 50-PSI (Int.), 6.5-PSI (Ext.), Temp: 650°F, MDMT: -20°F, Wall Thickness: 5/8", (7) Top Flanges, (2) End Flanges
- 1 – STEEL-PRO 24,900-GALLON HORIZONTAL CARBON STEEL VESSEL, S/N 18303 (2008), NB#1402, Diameter: 12'6", MAWP: 50-PSI (Int.), Temp: 300°F, MDMT: -20°F, Wall Thickness: 5/8", (6) Top Flanges, (5) End Flanges, Heaters
- 1 – STEEL-PRO 17,700-GALLON HORIZONTAL CARBON STEEL VESSEL, S/N 18304 (2008), NB#1404, Diameter: 11'2", MAWP: 50-PSI (Int.), Temp: 300°F, MDMT: -20°F, Wall Thickness: 5/8", (6) Top Flanges, (4) End Flanges, with Heaters
- 1 – STEEL-PRO 17,292-GALLON HORIZONTAL CARBON STEEL VESSEL, S/N 18301 (2008), NB#1400, Diameter: 10', MAWP: 50-PSI (Int.), 7.5-PSI (Ext.), Temp: 650°F, MDMT: -20°F, Wall Thickness: 5/8", (8) Top Flanges, End Flange
- 1 – 8,425-GALLON HORIZONTAL CARBON STEEL VESSEL, S/N B7100, NB#5577, Diameter: 10', MAWP: 45-PSI (Int.), 150°F, MDMT: -20°F, (8) Top Flanges, Bottom Flange



MIXERS / AGITATORS

- 1 – PHILADELPHIA MODEL 3815-S 125-HP MIXER, S/N 92D0L0128, 38.4:1-Ratio, 45-RPM, 1780-RPM
- 2 – LIGHTNIN MODEL 87S40 40-HP TOP MOUNTED MIXERS, S/N's 1000002461058, 25E2982401, CW Rotation, 38.1:1-Ratio, 70-RPM, 1770-RPM
- 1 – CHEMINEER MODEL 4HTA-20 20-HP AGITATOR, S/N 527784-1, Right Angle Design, 84-RPM, 1750-RPM
- 1 – CHEMINEER 20-HP AGITATOR, 1750-RPM
- 1 – CHEMINEER MODEL HTA-15 15-HP AGITATOR, S/N 1-7111-2, 84-RPM, 1750-RPM
- 1 – CHEMINEER MODEL 3CTN-2 2-HP AGITATOR, S/N 1-98927-1, 100-RPM
- 1 – CHEMINEER 1.5-HP AGITATOR, S/N 549961-1, 1750-RPM
- 1 – CHEMINEER MODEL VHA-7 3/4-HP AGITATOR, S/N 1-93670-1, 1750-RPM



FLOW METERS • CONTROL VALVES • PROCESSING EQUIPMENT BULK MATERIAL DELIVERY EQUIPMENT



BULK MATERIAL DELIVERY EQUIPMENT

- 2 – PELLETRON MODEL P600 DEDUSTERS, S/N's 6021-0794, 6022-0794, Capacity: 40,000 – 65,000 Lbs./Hr., Stainless Steel Construction, 7.5-HP Blower with Silencer
 - 1 – PELLETRON MODEL P400 DEDUSTER, S/N 5015-0992, Capacity: 20,000 – 45,000 Lbs./Hr., Stainless Steel Construction, 7.5-HP Blower with Silencer
 - 3 – ACRISON MODEL BDF1 STAINLESS STEEL VOLUMETRIC FEEDERS, S/N's 96384-03, NA, 20" x 25", Breaker Bar, Power Augers
 - 4 – TUTHILL 1215-19T2 200-HP POSITIVE DISPLACEMENT BLOWERS, with Silencers
 - 1 – MD PNEUMATICS MODEL 17-12015 200-HP POSITIVE DISPLACEMENT BLOWER, with Silencers
 - 2 – ROOTS MODEL 616 100-HP POSITIVE DISPLACEMENT BLOWERS, with Silencers
 - 1 – MODEL RVT100 100-HP POSITIVE DISPLACEMENT BLOWER, with Silencer
 - 1 – FULLER 816V-4500 75-HP POSITIVE DISPLACEMENT BLOWER, with Silencer
 - 1 – ROOTS 75-HP POSITIVE DISPLACEMENT BLOWER, with Silencer
 - 1 – SPENCER MODEL 2020-H 20-HP CENTRIFUGAL BLOWER
 - 2 – 15-HP CENTRIFUGAL BLOWERS
 - 10 – TOP MOUNTED SILO BIN VENTS
- LARGE QUANTITY OF** Coperion and Waeschle 2-Way Diverter Valves with Pneumatic Actuators - up to 8"; Waeschle and Sprout Bauer Rotary Valves



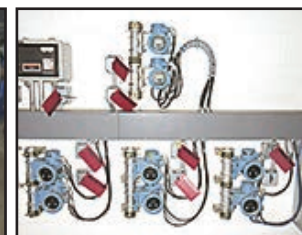
FLOW METERS & CONTROL VALVES

LARGE QUANTITY OF MICRO MOTION FLOW METERS & TRANSMITTERS, Including But Not Limited To: Flow Meter Models DS150S141, DS065S241SU & DS300S155SU; Transmitter Models RF29712, RF29739 E1SU, 1700R12ABUEZZZ, 1700R11ABUEZZZ, 1700R11BBUEZZZ

LARGE QUANTITY OF FISHER CONTROL VALVES, Including But Not Limited To: Models 667-ES, 667-BF, 667-EC & V150

PROCESSING EQUIPMENT

- 1 – RIETZ MODEL PB-15-H228 PRE-BREAKER, S/N P-711257, Carbon Steel Construction, 15" Screw Diameter, 15" x 21" Feed Opening, Falk Gear Box with 38.03:1-Ratio, 50-HP Drive Motor, 20-HP Fly Knife Cutter
- 4 – CONAIR/JETRO MODEL 3024 24" STRAND PELLETIZERS, S/N's 12-240-283, N/A, Rotary Helical Blade, 40-HP Drive, Feed Rolls
- 2 – CONAIR/JETRO MODEL 3012 30" STRAND PELLETIZERS, S/N's 12-320-778, 12-320-870, 12" Rotary Helical Blade, 50-HP Drive, Feed Rolls
- 2 – ROTEX MODEL 422PS AL/SS 2-DECK SCREENERS, S/N's R291280, R301280, Decks Approx. 36" x 60", (2) Outlets, 2-HP
- 2 – ROTEX 2-DECK SCREENERS, Models 3422PS AL/SS, and 202A, Decks Up to 34" x 60", (2) Outlets, 2-HP
- 5 – STAINLESS STEEL WATER BATHS, Up to 32'6"L x 36"W, Mounted On Casters with Air Curtain & Surge Tank
- 5 – STRAND DIE HEADS, To 30" Wide
- 1 – ENGEL MODEL ES200-60TL 60-TON INJECTION MOLDING MACHINE, S/N 70235/060/99 (1999), EC100 Control
- 3 – ADVANTAGE MODEL SENTRA 2000LE TEMPERATURE CONTROLLERS
- 1 – BERINGER MODEL 2448 JET CLEANER ELECTRIC OVEN, S/N J24-040, 24" x 48" Chamber



4 To schedule an auction, please call Hilco Industrial at 1-877-37-HILCO (44526)



SILOS

- 3 – MONSANTO 6478-CU.FT. ALUMINUM SILOS, 12' Diameter x 60' High (Approx.), Cone Bottom, 12" Outlet
- 1 – PEABODY 2800-CU.FT. ALUMINUM SILO, 12' Diameter x 33' High, Center Fill & Discharge, Cone Bottom with Pneumatic Gate Valve, Mounted On 4-Legs with Load Cells
- 4 – ALLOY FABRICATORS 1729-CU.FT. ALUMINUM SILOS, 9' Diameter x 31'9" High, Center Fill & Discharge, Cone Bottom
- 15 – 1624-CU.FT. ALUMINUM SILOS, 8' Diameter x 35' High (Approx.), Cone Bottom, 8" Outlet
- 10 – 5791-CU.FT. CARBON STEEL SILOS, 12' Diameter x 60' High (Approx.), Oblique Cone Bottom, 12" Outlet



PLANT SUPPORT

- 1 – TEMPEST LTWC25X3 75-TON PORTABLE CHILLER, S/N 2143-1202 (2012), with (3) 25 Ton, 100-HP, R-134 Refrigerant, Allen Bradley PanelView Plus 1000 PLC, Copper Evaporator SST Plates, Copper Condenser Tubes, All Mounted in 30' Container, 72" Man Door, Heaters
- 1 – YORK MODEL YCAL0022EE46 18.7-TON CHILLER, S/N 2LYMO17955 (2012), Air Cooled, R-410A Refrigerant, Flow: 44.8-GPM
- 1 – CARRIER MODEL 07HY120DM601JF02 50-TON CHILLER, S/N 5299F01526, 100-HP, R-22 Refrigerant, with Chil-Con Heat Exchanger
- 1 – YORK MODEL YCUL0026EC46 20-TON CONDENSER, S/N RARM013487 (2006), Air Cooled, R-22 Refrigerant
- 1 – YORK MODEL YCUL0026EC46 20-TON CONDENSER, S/N RARM013487 (2006), Air Cooled, R-22 Refrigerant
- 1 – EVAPCO MODEL AT 24-618B COOLING TOWER, S/N 950306, with (2) 40-HP Gorman-Rupp Model T8A3B Centrifugal Pumps
- 1 – BLUE MARBLE CONTINUOUS EMISSIONS MONITORING SYSTEM, Project #BMTS-1304-WT (2013), with M&C Products Model SP2000-H Heated Gas Sample Probe, O'Brien Heated Teflon Sample Umbilical, M&C Products Model ECM-2G Sample Conditioner, Teledyne-API T300M Gas Filter Correlation CO Analyzer, Teledyne-API Oxygen Analyzer (Internal Cell on T300M), DRDAS Adam 5000 Control Interface, Advantech 510 Industrial Computer, All Components Mounted on Common Rack, All Housed in ETKO Model 888 512-Cu.Ft. Shelter, with Air Conditioning, O2 and CO Monitors, Temperature Gauges, Lifting Lugs, Mounting Brackets, Lights
- 1 – ANGUIL MODEL 388 500-SCFM CATALYTIC RECUPERATIVE OXIDIZER SYSTEM, S/N CNM5-388 (1999), 3-HP Blower with Silencer, Logical Display PLC, Honeywell Chart Recorder & Digital Temperature Controller, Electric Heater, Surge Tank, All Mounted On Common Skid
- 1 – ENVIRONMENTAL SYSTEMS AIR STRIPPER / SCRUBBER
- 1 – SAFETY STORAGE MODEL 2410 FSE HAZARDOUS MATERIAL STORAGE BUILDING, S/N 20373 (2005), Occupancy Classification: H-3, Construction Classification: II-N, 2-Hour Fire Rating, (3) Explosion Relief Vents, (3) 72"W x 95"H Dual Man Doors with Key Pad Locks, Steel Grate Floor, Climate Controlled with Refrigeration Unit & Fan Forced Heater, Exhaust Fan, Explosion Proof Lighting, Sprinklers, Exterior Lights
- 1 – KELLY KLOSURE SYSTEMS 16' X 22' X 12'6" SOUND ENCLOSURE, 9' x 10' High Roller Door, Man Door, Wired For Lighting, Exhaust Fan
- 1 – KOCH 17'6" X 12'7" X 13' paneled sound enclosure, (3) Man Doors, Wired For Lighting
- 1 – DEMARCO MODEL MAXVAC PORTABLE VACUUM SYSTEM, Job #970903, LP Fuel, Sutorbuilt Vacuum Blower, Self-Dumping Hopper, Mounted On Tandem Axle Trailer
- 1 – CECO INDUSTRIES MODEL CMC-6400 5000-ACFM MIST COLLECTOR, Job #H3772-4 (2006), 30-HP Blower, (2) Honeywell ST 3000 Smart Pressure Transmitters, (1) Honeywell STT 3000 Temperature Transmitter
- 1 – TORIT DONALDSON MODEL DF02-4 DUST COLLECTOR, S/N 2448196-1, with 3-HP Blower, Rotary Valve, Work Platform
- 1 – YORK MODEL XT1-102X081-FAKA046A AIR HANDLING UNIT, S/N CARMXT0062 (2006), 10-HP Blower, Max. Water Temp: 200°F, Max. Pressure: 50-PSI
- 2 – SOLAR MODEL T-35IN-28 250-KVA GAS TURBINE GENERATOR SETS, S/N's S409674, S409673

2012



Partial Listing Only,
Please Visit Our Website
hilcoind.com/Styrolution
For Complete Lot Catalog

2012



2013



ROLLING STOCK • SCALES • LAB & QUALITY CONTROL EQUIPMENT

ROLLING STOCK

- 1 – **TRACKMOBILE MODEL 4300TM RAIL CAR MOVER**, S/N LGN 968390596 (1996), 145-HP Detroit Diesel Engine with Block Heater, 4-Speed Power Shift Transmission, Heated Wide View Enclosed Cab with 2-Way Adjustable Seat & Dual Rail Controls, Air Brakes, Hydraulic AAR Couplers, Max Tran Automatic Coupler, Weight Transfer Control System, Track Light, (8) Air Operated Sanders, Foam Filled Tires, with Rail Snow Plow, 638 Hours Indicated
- 1 – **MADVAC MODEL CN100 COMPACT STREET SWEEPER**, S/N 30036, Diesel, Joystick Control, Enclosed Cab with Air/Heat/Defrost, Back Up Camera, Lights, AM/FM/CD Stereo, Built In Power Washer
- 1 – **GMC MODEL SIERRA C1500 PICKUP TRUCK**, VIN: 1GTN1TEX6CZ224481 (2012), 1750-Miles, 4.3L 6-Cylinder, Auto, Air, Sprayed Bed Liner, Ladder Rack
- 1 – **FORD MODEL F250 PICKUP TRUCK**, VIN: 2FTRF27W9XCB02573 (1999), 27,700-Miles, 4.6L Triton V8, Auto, Air, Bed Liner
- 2 – **KUBOTA MODEL RTV900XT DIESEL 4X4 UTILITY TRUCKS**, S/N's C9033, D8122, Windshield, Roll Bar, Front & Rear Hitch, 52"W x 46"L Bed, Side Rack, Work Lights, As Low as 176-Hours
- 2 – **MITSUBISHI MODEL FG30N 5200-LB. LPG FORKLIFT TRUCKS**, S/N's AF13F10368, AF13F10367, 2-Stage Mast, Side Shift, 42" Forks, Solid Tires, Work Lights
- 1 – **TOYOTA MODEL 42-4FGC25 5000-LB. LPG FORKLIFT TRUCK**, S/N 404FGC25-20747, 2-Stage Mast, Fork Rotation, 42" Forks, Solid Tires, Work Lights, 4144-Hours
- 1 – **MITSUBISHI MODEL FG30N 4200-LB. LPG FORKLIFT TRUCK**, S/N AF13F1B408, 4-Stage Mast, Side Shift, 42" Forks, Solid Tires, Work Lights
- 1 – **SNORKEL LIFT MODEL TP A50R 50' BOOM LIFT**, S/N 861300686, 550-Lb. Capacity, LP Fuel
- 1 – **SIMON MODEL FALCON 2034 ELECTRIC PLATFORM LIFT**, S/N EDB01154



SCALES

- 1 – **AVERY WEIGH-TRONIX MODEL RLP-26-26 400,000-LB. TRAIN RAIL SCALE**, S/N 00B-72110 (2000), (2) 26' Platform Modules with (6) Double End Load Cells, WI-130 Digital Indicator, WP-250 Ticket Printer
- 1 – **METTLER TOLEDO MODEL 7560SD 200,000-LB. TRUCK SCALE** (2009), 70' x 11' Deck Area Made Up Of (4) 17.5' x 11' Steel Deck Modules, (10) 50,000-Lb. MTX Load Cells, IND310 Digital Terminal

LABORATORY & QUALITY CONTROL EQUIPMENT

- 1 – **WABASH MODEL GENESIS G30H15 30-TON 4-POST HYDRAULIC HEATED PLATEN LAMINATION PRESS**, S/N 9276 (1994), 15" x 15" Platen, 6" Stroke, 12" Open Height
 - 4 – **HORIBA LASER SCATTERING PARTICLE SIZE & DISTRIBUTION ANALYZERS**, Models LA 930, LA 920, LA900 (To 2005)
 - 2 – **TINIUS OLSEN EXTRUSION PLASTOMETERS**
 - 2 – **TINIUS OLSEN AND TMI SPECIMEN NOTCHERS**
 - 2 – **TMI MODEL 43-02 IMPACT TESTERS**, S/N 43446
 - 1 – **OPTICAL CONTROL SYSTEMS PS-25C GRANULATE INSPECTION SYSTEM**, S/N 1003188
 - 1 – **WATERS MODEL ALLIANCE 2695 SEPARATIONS MODULE**, S/N L05SM7 568M, with 2996 Photodiode Array Detector, 2414 Refractive Index Detector
 - 1 – **AGILENT MODEL 6890N NETWORK GAS CHROMATOGRAPH**, S/N CN10644019, with 7683 Auto Sampler, 7683B Injector
 - 1 – **THERMO SCIENTIFIC MODEL NICOLET IS10 SPECTROMETER**
 - 1 – **THERMO SCIENTIFIC MODEL NEAR-IR INTEGRATING SPHERE**, S/N 1202006
 - 1 – **PERKIN ELMER MODEL LAMBDA 20 SPECTROMETER**, S/N 101N8030422
 - 4 – **HUNTER LAB SPECTROPHOTOMETERS**, Models UltraScan Pro D65, ColorFlex 45/0
 - 1 – **CEAST MODEL HDT VICAT HV6 6-STATION THERMO-MECHANICAL TESTER**, S/N 16361
 - 1 – **WS TYLER MODEL RX-812 SIEVE SHAKER**, S/N 2311 (2004)
 - 1 – **AMSCOPE BINOCULAR MICROSCOPE**, S/N 1109182
 - 1 – **MATHESON GAS PRODUCTS MODEL CHRYSALIS II HYDROGEN GAS GENERATOR**, S/N TNM070615834
 - 1 – **WHATMAN MODEL 76-803 ZERO AIR GENERATOR**
- MISCELLANEOUS Including** Vacuum Pumps, Vacuum Oven, Balances, Microscopes, Starrett Gauges, Standards, Viscometers, Sieves, and More

6 To schedule an auction, please call Hilco Industrial at 1-877-37-HILCO (44526)

MAINTENANCE & SUPPORT • ELECTRICAL • PUMPS • GEAR REDUCERS



2000-KVA, 2-Available



MAINTENANCE & SUPPORT EQUIPMENT

- 1 - SPM MODEL MAC-5 MACHINERY ALIGNMENT ANALYZER, S/N 213004
- 1 - IRD MODEL FAST TRACK DATA COLLECTION SYSTEM, S/N 9204288
- 1 - ENTEK MODEL DATA PAC 1500 DATA COLLECTION SYSTEM, S/N 9512255
- 1 - NATIONAL MODEL U69614 8' X 14-GA. BOX & PAN BRAKE, S/N 566-0800
- 1 - TENNSMITH MODEL SR36 3' X 22-GA. BENDING ROLL, S/N 19681
- 1 - OTC 55-TON HYDRAULIC H-FRAME SHOP PRESS, (No Hydraulic Pump)
- 1 - ECON-O-LINE MODEL 60X48 CB BLAST CABINET, with Dust Collector
- 1 - KALAMAZOO MODEL 9AW 9" X 13" HORIZONTAL BAND SAW, S/N 1593
- 1 - JET JDP-20VS-3 2-HP VERTICAL DRILL PRESS
- 1 - SPANCO 1/2-TON X 12' FREE STANDING BRIDGE CRANE, 20' Runway, Electric Hoist

LARGE QUANTITY OF SPARE PARTS Including, But Not Limited to: Motors, Expansion Joints, Blowers, Pumps, Valves, Regulators, Gauges, Monitors, Thermometers, Bearings, Pillow Blocks, Seals, Ball Valves, Solenoid Valves, Sprockets, Bushings, Filters, Fans, Etc.

QUANTITY OF SHOP AND MAINTENANCE SUPPORT EQUIPMENT, Including: (75+) Vidmar Cabinets, Gang Boxes, Power & Hand Tools, Welders, Ladders, Work Benches, Cabinets, Shelving, Rapid Roll-Up Doors, Industrial Manipulator, Pallet Racking, Pallet Jacks, Die Carts, Dump Hoppers, Rigging & Safety Equipment, Lights, Floor Cleaners, Conveyor, Shop Fans, Flammable Material Storage Cabinets, Storage Racks & Cages, Oxy Fuel Carts, Hose, Wire, DVIT Smart Board 800, Ricoh Aticio MPC2051 Color Copiers, Etc.

ELECTRICAL

- 2 - 2000-KVA SUBSTATIONS
- 6 - ALLEN BRADLEY MODEL CENTERLINE 2100 3-, 5-, 7-, 9- & 11-BANK 600-VOLT MOTOR CONTROL CENTERS, Buss Rating To 800A Horiz./600A Vert.
- 1 - ALLEN BRADLEY MODEL CENTERLINE 2100 TRANSFER SWITCH, S/N EJC2B3C

LARGE QUANTITY OF Dry Type Transformers, Dry Type Isolation Transformers

HUGE QUANTITY OF Adjustable Speed Drives, Transistor Inverters, Electric Motors Up to 200-HP

LARGE QUANTITY OF WIRE SPOOLS, Including: 14/9C VNTC N/S E2 600V TC-ER Tray, 14/5C VNTC N/X E2 600V TC-ER Tray, 14/7C VNTC N/S E2 600V TC-ER Tray, 8/3C VNTC N/S E2 600V TC-ER Tray, WYR 12/3 ER-E10K-BED Tray Power Cable

PUMPS

- 1 - TEIKOKU BA42-717J4EM-1215U1V-GT HIGH TEMP. CANNED MOTOR PUMP (2012), 900-GPM, 344-Ft. Head
- 4 - TEIKOKU CANNED MOTOR PUMP (2012), Models FA42-517X4M-0608T1V-AV, F41-517X4M-0608T1V-AV, FA42-517X4M-0810T1V-AV, to 250-GPM, to 250-Ft. Head
- 2 - GOULDS 150-HP VERTICAL TURBINE PUMPS, 3125-GPM
- 1 - DEAN R454 125-HP HIGH TEMP. CENTRIFUGAL PUMP, 900-GPM, Size 4x6x10
- 2 - VIKING INTERNAL GEAR PUMPS, Models N4323A & OR124A, 50 & 20-HP, to 350-GPM, Universal Seal
- 3 - KONTRO SEALLESS CENTRIFUGAL PUMPS, Models HS2EL, HS3FL, HS2DL, to 25-HP, to 400-GPM
- 4 - BLACKMER CENTRIFUGAL PUMPS, Models FRS & FRA, 10/15 HP

GEAR REDUCERS

- 1 - FALK 2130Y3-L, PARALLEL, 1750 / 24.3-RPM, Ratio: 71.94, HP Rating 80
- 1 - FALK 2125Y3-LD, PARALLEL, 1750 / 20.2-RPM, Ratio: 86.81, HP Rating 116
- 1 - FALK 48584-C. PARALLEL, 1750 / 10.3-RPM, Ratio: 170.7, HP Rating 100
- 1 - FALK 2130FC3A, PARALLEL, 1750 / 37-RPM, Ratio: 47.26, HP Rating 125, w/ 75-HP Motor
- 1 - FALK 1130FC3A, PARALLEL, 1750 / 36.9-RPM, Ratio: 47.44, HP Rating 125, w/ 75-HP Motor
- 1 - FALK 130FC3A, PARALLEL, 1750 / 24.46-RPM, Ratio: 71.56, HP Rating 78.3, w/ 75 HP Motor
- 1 - FALK 130FC3A, PARALLEL, Ratio: 47.1



Large Quantity of Toshiba Drives



75+ Vidmars





31555 W. Fourteen Mile Road, Suite 301
Farmington Hills, MI 48334
Ph: 248-254-9999
Fx: 248-254-9995
www.hilcoind.com



Forwarding Service Requested

Hilco Industrial **WEBCAST/ONSITE AUCTION**



Complete Polystyrene Processing Facility

Pelletizing Lines, Bulk Material Storage and Transfer, Chemical Processing, Plant & Production Support, Rolling Stock, Lab Equipment



**Thursday, October 8th • 10:00 am Local Time
Springfield (Indian Orchard), MA**

HILCO Industrial is a division of Hilco Global • Headquarters 5 Revere Drive, Ste. 206 • Northbrook, IL 60062 • All rights reserved
Hilco Industrial, LLC Massachusetts Auctioneer & License: Tim Pfister License #AU3142 • IL License #444.000215
Printed in USA • STY2863 • Please visit our website at www.hilcoind.com to review our complete terms and conditions.

Terms of Sale

A 16% buyer's premium will be charged on all assets when payment is made by means of cash, cashier's check, company check (with bank letter of guarantee) or wire transfer within 48 hours of sale close. An 18% buyer's premium will be charged on all assets when payment is made by credit card (accepted for invoices of \$2000 or less), or when payment is received after 48 hours of sale close. An 18% buyer's premium will be charged for all BidSpotter purchases with no discount for prompt payment. Everything will be sold to the highest bidder for cash, in accordance with the Auctioneer's customary "Terms of Sale", copies of which will be posted on the premises of the sale and subject to additional terms announced the day of sale. All items will be sold "as is, where-is" without any warranties, expressed or implied. Although obtained from sources deemed reliable, the Auctioneer makes no warranty or guarantee to the accuracy of the information herein contained. Bidders are encouraged to thoroughly inspect the items on which they intend to bid prior to sale. Absolutely no items will be removed until the day after the conclusion of the sale and payment is made in full. Subject to additions, deletions and prior sale. For updated information, please visit our website at www.hilcoind.com for any changes to date, sale process, terms and conditions and list of available assets.

Payment: INVOICES WILL BE EMAILED WITHIN 24 HOURS AFTER THE AUCTION CLOSES. Payment is to be made to Hilco Industrial, LLC. Payment Options: VISA, Mastercard Discover accepted – if invoice total is \$2,000 or less; Wire Transfer; Certified Check; or Company Check (with Bank letter of guarantee – see sample letter below). All sales are subject to sales tax. Purchasers claiming exemptions from taxes must provide proof satisfactory to the Auctioneer of their entitlement to claim such exemptions. Please see complete terms and conditions on our website, www.hilcoind.com.

Sample Bank Letter

(Bank Name) unconditionally guarantees payment to Hilco Industrial from (Company Name). This guarantee will be valid for purchases made at the Auction of Styrolution America on October 8, 2015.



A Hilco Global Company
Vested in Your Success