

W.E.S.S.

WELDING EQUIPMENT SALES & SERVICE

HIRE EQUIPMENT

Welder & Power Engine Drives



Welding Power Supplies



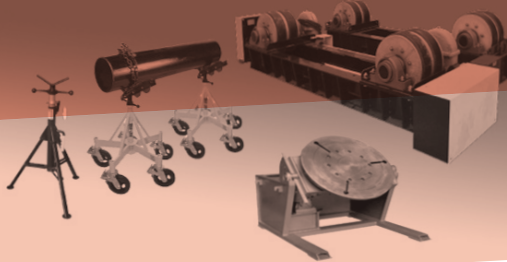
Stud Welders



Plasma Cutting & Specialty Heating



Handling Equipment



**Other Specialty
Welding Equipment**



Dependable. Trusted.
Proven Performance.

W.E.S.S.

WELDING EQUIPMENT SALES & SERVICE

In HIRE EQUIPMENT, we specialise in construction and shut down projects, offering the largest fleet of welding industry related equipment in southern Australia with over 1,000 products in stock. An extensive line up of engine driven welder/generators, cutting and welding power supplies, positioning and rotating equipment and hundreds of other products. The fleet is up to date and modern with the latest of today's technologies.

No job is too big or small, hire from as little as a day to years. If we don't have it in stock, we can usually get it very quickly from our extensive national and international network.

- ✓ Over 1,000 products available ex stock
- ✓ Hire for small jobs or major long-term projects
- ✓ Hire from as little as a day to years
- ✓ All products fully backed up and supported locally, onsite or in-shop
- ✓ Discounted bundle packages available with equipment & consumables for the complete job
- ✓ If we don't have it, we can get it
- ✓ Consider the TAX benefits of hire vs purchase

W.E.S.S. is Your One Stop Welding Shop
Superior Range ➤ Sell/Hire/Service/Repair ➤ Expert Advice



TABLE OF CONTENTS

WELDER / POWER ENGINE DRIVES	4
INDUSTRIAL POWER GENERATORS	5
HEAVY DUTY PIPE & TANK ROLLS	6
WELDING POWER SUPPLIES	7
■ Arc Welders & Battery Power	7
■ MIG Welders	8
■ Multi Process Welders	9
■ MIG / FCAW Wire Feeders	10
■ TIG Welders & Battery Power	11
■ Stud Welders	12
■ Sub-Arc Systems	13
■ Carbon Arc Gougers	14
WELDING EQUIPMENT OTHER	15
■ Weld Postclean	15
■ Welding Fume Extractors	15
■ Welding Automation	16
CUTTING & HEATING EQUIPMENT	17
■ Plasma Cutters	17
■ Induction Heating	17
■ Electrode Ovens	17
■ Gas Heating	18
■ Gas Pipe Cutting	19
■ Gas Plate Cutting Tractors	19
■ Exothermic Lances & Slice Kits	20
HANDLING EQUIPMENT	21
■ Pipe Stands, Rolls & Clamps	21
■ Positioners & Manipulators	22
WELDING ACCESSORIES	23
OTHER SPECIALTY EQUIPMENT	23
WELDING CONSUMABLES	24
GUN & TORCH CONSUMABLE PARTS	25



AIR PAKS / POWER ENGINE DRIVES

PRODUCT CODE: **EDWG-L**

- **Model/Size: 500 Amps**
- High Output up to 500 Amps
- 240V Auxiliary Power options available
- VRD options available
- Silenced
- Air for gouging
- Up to 14.5 KvA



DUAL OPERATOR (MIG/FCAW MANUAL ARC WELDING)

PRODUCT CODE: **EDWG-DOM**

- **Model/Size: Dual MIG/FCAW versions (twin operator)**
- High Output up to 480 Amps
- 240V & 415V (3-phase) Auxiliary Power options available
- VRD options available
- Silenced
- Up to 18 KvA



SMALL PORTABLE WELDER / POWER ENGINE DRIVES

PRODUCT CODE: **EDWG-S**

- **Model/Size: 200 Amps**
- High Output up to 200 Amps
- 240V & 415V (3-phase) Auxiliary Power options available
- VRD options available
- Silenced
- Up to 4.8 KvA

COMPATIBLE ACCESSORIES



ARC WELDING ACCESSORIES

PRODUCT CODE: **AW-ACC**



MIG/FCAW WIRE FEEDERS

PRODUCT CODE: **MWF-VS**

INDUSTRIAL POWER GENERATORS



LARGE INDUSTRIAL POWER GENERATORS 240V/415V

PRODUCT CODE: **EDWG-DOA**

- **Model/Size: 240V / 415V**
- Large Industrial Generator 240V & 415V
- Up to 100 Kva

COMPATIBLE ACCESSORIES



PORTABLE MULTI JUNCTION BOXES

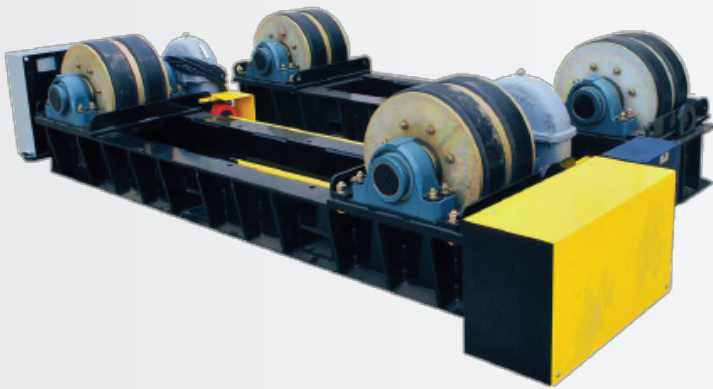
PRODUCT CODE: **EDPG-ACC**



EXTENSION LEADS

PRODUCT CODE: **EDPG-AAC**

HEAVY DUTY PIPE & TANK ROLLS



LARGE INDUSTRIAL PIPE & TANK ROLLS

PRODUCT CODE: **PTR-L**

- Large 415v Industrial rollers
- Up to 180,000 kg's (180 ton)



LARGE INDUSTRIAL PIPE & TANK ROLLS

PRODUCT CODE: **PTR-L**

- Large 415v Industrial Set DUMA 60 Ton Rollers with 2 idler rolls
- Additional idlers available



SMALL PIPE & TANK ROLLS

PRODUCT CODE: **PTR-S**

- **Model/Size: 240V**
- Small 240V portable - 37 mm to 400 mm pipe
- Additional idlers available
- Foot pedal
- 680 kg

WELDING POWER SUPPLIES

Arc Welders & Battery Power



ARC (MMAW) DC-240V PORTABLE INVERTERS

PRODUCT CODE: **AW-240**

- **Model/Size: 240V, 160-180 Amps**
- Premium Lorch & Fronius brands
- ARC (Stick) & Lift TIG Processes
- Small 240V DC portable inverters Capable of 2.0 mm to 4.0 mm electrodes
- 240V - 10A & 15A Input units available
- Various lead kit lengths
- Integrated VRD



ARC (MMAW) DC BATTERY POWERED

PRODUCT CODE: **AW-B**

- **Model/Size: 160-180 Amps**
- Premium Lorch brand
- ARC (Stick) & Lift TIG Processes
- Small portable battery powered, 240V, 10A charging
- Capable of 2.0 mm to 4.0 mm electrodes
- Various lead kit lengths
- Integrated VRD



ARC (MMAW) DC-415V INDUSTRIAL PORTABLE INVERTERS

PRODUCT CODE: **AW-415**

- **Model/Size: 415V, 350-400 Amps**
- Capable of 2.0 mm to 5.0 mm electrodes
- Capable of air carbon arc gouging to 8 mm carbons
- Various lead kit lengths
- Integrated VRD

COMPATIBLE ACCESSORIES



ARC WELDING ACCESSORIES

PRODUCT CODE: **AW-ACC**



MIG/FCAW WIRE FEEDERS

PRODUCT CODE: **MWF-VS**

WELDING POWER SUPPLIES

MIG Welders



MIG (GMAW) / FCAW 240V PORTABLE INVERTERS

PRODUCT CODE: **MW-240**

- **Model/Size: 240V, 30 - 250A**
- MIG & Gasless Wire operation
- Also, Stick & Lift Tig capable
- 240v - 10A & 15A Input units available
- Integrated VRD (stick)
- Small & portable



MIG (GMAW) / FCAW OLDER CONVENTIONAL MACHINES

PRODUCT CODE: **MWC-415**

- **Model/Size: 415V, 60 - 1000A**
- Compact or remote setups, (Supplied with or without portable feeder)
- Old faithful WIA Fabricator & Cigweld 400 4x4.
- MIG & Flux Cored, setup for shop use.



MIG (GMAW) / FCAW ADVANCED DIGITAL INVERTER MACHINES

PRODUCT CODE: **EDWG-DOM**

- **Model/Size: 415V, 60 - 500A**
- Premium Lorch brand
- Compact or remote setups, (Supplied with or without portable feeder)
- Advanced digital high speed processes for Solid MIG and Flux Cored welding processes.
- Industry 4.0 compatible with optional cloud connection and big data management.



MIG PULSE (GMAWP) ADVANCED DIGITAL INVERTER PULSE MACHINES

PRODUCT CODE: **MWP-415**

- **Model/Size: 415v, 60 - 500A**
- Premium Lorch & Fronius brands
- Compact or remote setups
- Pulse welding
- Standard or push pull gun setups
- Other advanced digital high speed processes for Solid MIG and Flux Cored welding processes.
- Industry 4.0 compatible with optional cloud connection and big data management.



INDUSTRIAL – MULTI PROCESS

PRODUCT CODE: **MPW-415**

- **Model/Size: 415V, 60 - 450A**
- MIG & Flux Cored, setup for shop or site use.
- Also, Stick, Lift Tig and gouging processes
- VRD available

WELDING POWER SUPPLIES

Multi Process Welders



MIG (GMAW) / FCAW 240V PORTABLE INVERTERS

PRODUCT CODE: **MW-240**

- **Model/Size: 240V, 30 - 250A**
- MIG & Gasless Wire operation
- Also, Stick & Lift Tig capable
- 240v - 10A & 15A Input units available
- Integrated VRD (stick)
- Small & portable



INDUSTRIAL – MULTI PROCESS

PRODUCT CODE: **MPW-415**

- **Model/Size: 415V, 60 - 450A**
- MIG & Flux Cored, setup for shop or site use.
- Also, Stick, Lift Tig and gouging processes
- VRD available

COMPATIBLE ACCESSORIES



MIG WELDING ACCESSORIES

PRODUCT CODE: **MW-ACC**



WELDING FUME EXTRACTORS

PRODUCT CODE: **WFE**

WELDING POWER SUPPLIES

MIG / FCAW Wire Feeders



MIG (GMAW) / FCAW VOLTAGE SENSING CCCV WIRE FEEDERS

PRODUCT CODE: **MWF-CCCV**

- Lincoln & Miller CC/CV feeders set up as required
- For use on welder generators & CC/CV power sources
- Gas or Gasless (innershield) Flux cored wire use
- Typically used on site but also can be used in shop for MIG solid wire

COMPATIBLE ACCESSORIES



MIG WELDING ACCESSORIES

PRODUCT CODE: **MW-ACC**



TIG WELDING ACCESSORIES

PRODUCT CODE: **TW-ACC**



WELDING POWER SUPPLIES

TIG Welders & Battery Power



TIG (GTAW) DC - 240V PORTABLE INVERTERS

PRODUCT CODE: **TW-240**

- **Model/Size: 240V, 200 amps**
- Premium Lorch & Fronius brands
- DC, HF, Pulse TIG also Lift TIG & Stick processes
- Small 240V DC, highly portable inverters
- Smart Torch control up to 16 meters
- Foot controller
- Integrated VRD



TIG (GTAW) DC – BATTERY POWERED PORTABLE INVERTERS

PRODUCT CODE: **TW-B**

- **Model/Size: 240V, 200 amps**
- Premium Lorch brand
- DC, HF, Pulse TIG also Lift TIG & Stick processes
- Small 240V DC, highly portable inverters
- Smart Torch control up to 16 meters
- Foot controller
- Integrated VRD



TIG (GTAW) - DC OR ACDC - 415V PORTABLE INVERTERS

PRODUCT CODE: **TWDCHF-415**

- **Model/Size: 415V, 250-300 amps**
- Premium Lorch & Fronius brands
- DC, HF, Pulse TIG also Lift TIG & Stick processes
- Air cooled or water cooled setups
- Portable or complete shop systems
- Smart Torch control up to 16 meters
- Foot controller
- Integrated VRD



TIG (GTAW) - DC OR ACDC - 415V HEAVY DUTY INVERTERS

PRODUCT CODE: **TWACDC-415**

- **Model/Size: 415V, 400-500 amps**
- Premium Lorch brand
- Heavy Duty ACDC, HF, Pulse TIG also Lift TIG & Stick processes
- Integrated water cooled
- Smart Torch control up to 16 meters
- Foot controller

WELDING POWER SUPPLIES

Stud Welders



STUD WELDER - THREADED

PRODUCT CODE: **SWT**

- System for threaded & part threaded studs in metric & imperial
- Studs in mild steel & stainless
- M3, M4, M5, M8, etc.
- 8 – 50mm long



STUD WELDER - SHEAR

PRODUCT CODE: **SWS**

- System for shear studs in 12.7, 16, 19 & 22
- Clean beam or through deck
- 50 – 198 mm long

COMPATIBLE ACCESSORIES



PIN/STUD WELDER TORCH

PRODUCT CODE: **SW-ACC**

STUD WELDING CONSUMABLES

PRODUCT CODE: **SW-CON**

WELDING POWER SUPPLIES

Sub-Arc Column & Boom Systems



SUBMERGED ARC POWER SOURCES 415V

PRODUCT CODE: **SAPS**

- Heavy duty Sub-arc power sources up to 1000 amps
- Paralleling kits available



SUBMERGED ARC CONTROL & BOOM SYSTEMS

PRODUCT CODE: **SAB**

- Subarc NA3 systems & Booms Note: Booms are only available for long term hire



COMPATIBLE ACCESSORIES

SUB-ARC TRACTORS

PRODUCT CODE: **SA-ACC**



SUB-ARC CONSUMABLES

PRODUCT CODE: **SA-CON**

WELDING POWER SUPPLIES

Carbon Arc Gougers



AIR CARBON ARC GOUGING POWER SOURCES 415V

PRODUCT CODE: **GPS-415**

- Heavy Duty gouging power sources for 4.8 mm carbons up to 19 mm
- Up to 1000 amps
- Pointed, jointed, flat DC & AC carbons



AUTOMATED AIR CARBON ARC GOUGING SYSTEM

PRODUCT CODE: **SWS**

- Tractor or fixed mount, any length 10 mm to 16 mm jointed carbons

COMPATIBLE ACCESSORIES



GOUGING ACCESSORIES

PRODUCT CODE: **G-ACC**



GOUGING CONSUMABLES

PRODUCT CODE: **G-CON**

WELDING EQUIPMENT OTHER

Sub-Arc Systems



WELD POST CLEAN SYSTEM

PRODUCT CODE: **WPC**

- System used for cleaning, polishing & passivating stainless steels
- Eliminates toxic / dangerous pickling pastes
- Fast & efficient
- Clean weld & gets rid of scale
- Predominately used on stainless welds

WELDING EQUIPMENT OTHER

Weld Fume Extractors



WELDING FUME EXTRACTORS

PRODUCT CODE: **WFE**

- 240V portable wheel around fume extraction
- Internal Filter systems
- 4 mtr flexi-able over head moving arms



WELDING FUME EXTRACTORS

PRODUCT CODE: **WFB**

- 240V fan extractors
- 5 mtr inlets, 5 mtr outlets ...but extendable
- Extraction to exterior venting



WELDING FUME GUN SYSTEM

PRODUCT CODE: **WFGE**

- Fume MIG/Flux Cored Gun with 240V extraction system
- Complete self contained and mobile unit
- Fits any MIG machine with a Euro gun connection

WELDING EQUIPMENT OTHER

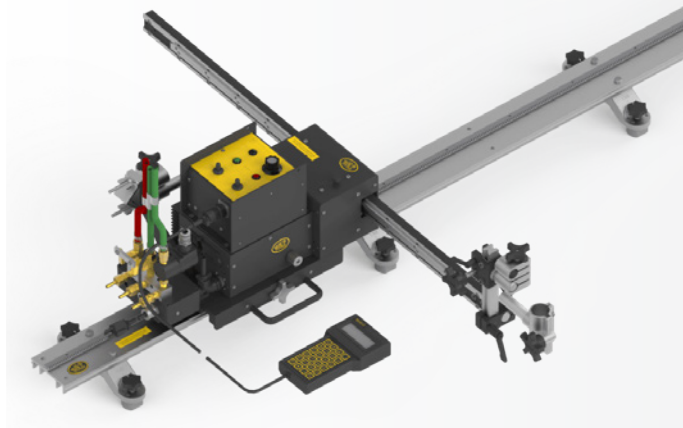
Welding Automation



WELDING TRACTORS

PRODUCT CODE: **WTR-KAT**

- Gullco KAT's
- Variable speeds
- Track (horizontal & vertical)



WELDING TRACTORS

PRODUCT CODE: **WTR-BO**

- Bug-0'S & weavers
- Variable speeds
- Magnetic base for verticals



WELDING TRACTORS

PRODUCT CODE: **WTR**

- Variable speeds
- Trackless (horizontal & vertical)
- Stitch function
- Magnetic base for verticals
- Often used with MIG guns fitted

CUTTING & HEATING EQUIPMENT

Plasma Cutters



PLASMA CUTTER - 240V PORTABLE SYSTEMS

PRODUCT CODE: **PC-240**

- Premium Hypertherm brand
- 240V portable Plasma cutters
- Up to 16 mm severance



PLASMA CUTTER - 415V INDUSTRIAL SYSTEMS

PRODUCT CODE: **WTR-BO**

- Premium Hypertherm brand
- Heavy Duty 415V mobile Plasma cutters
- Up to 45 mm severance
- Autoline sensors input current ...240V, 415V, Generators. etc.

COMPATIBLE ACCESSORIES

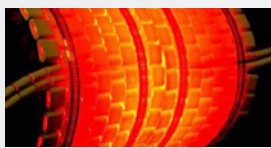


PLASMA TORCH CONSUMABLES

PRODUCT CODE: **PC-CONP**

HEATING EQUIPMENT

Induction Heating & Electrode Ovens



INDUSTRIAL INDUCTION HEATING SYSTEMS

PRODUCT CODE: **IHS**

- Heavy Duty induction heating systems
- For pre-heating and post weld heat treatment of pipe & plate

HEATING EQUIPMENT

Induction Heating & Electrode Ovens



PORTABLE ELECTRODE OVENS

PRODUCT CODE: **EHB**

- Small portable electrode hot boxes (5 kg & 14 kg versions)
- Variable temperature up to 180c



BENCHTOP ELECTRODE OVENS

PRODUCT CODE: **EBO**

- Benchtop electrode baking and holding ovens
- 130 KG capacities
- Variable temperatures 30c -400c

CUTTING & HEATING EQUIPMENT

Gas Heating



GAS HEATING EQUIPMENT

PRODUCT CODE: **GHE**

- LPG / Propane Burners / heating torches
- Various size torches & hose lengths
- 5 mm & 10 mm hoses

CUTTING & HEATING EQUIPMENT

Gas Pipe Cutting



PIPE CUTTER

PRODUCT CODE: **P-CUT**

- Pickle pipe (gas) cutters
- Joinable link chains for various size pipes

CUTTING & HEATING EQUIPMENT

Gas Plate Cutting Tractors



PLATE CUTTER

PRODUCT CODE: **P-CUT**

- IK12 Beetle
- Oxy Fuel Plate Cutting

COMPATIBLE ACCESSORIES



OXY FUEL CONSUMABLES

PRODUCT CODE: **OF-CON**

CUTTING & HEATING EQUIPMENT

Exothermic Lances & Slice Kits



EXOTHERMIC LANCE HOLDERS

PRODUCT CODE: **ELH**

- Thermic lance holders
- For 16 mm & 19 mm ... 3 mtr lances



SLICE ROD KITS

PRODUCT CODE: **SRK**

- Complete slice rod kit
- For 6.3 mm & 10 mm rods

COMPATIBLE ACCESSORIES



LANCES & SLICE RODS

PRODUCT CODE: **LSR**

HANDLING EQUIPMENT

Pipe Stands, Rolls & Clamps

PIPE STANDS

PRODUCT CODE: **P-S**

- Extendable, foldable
- V head, Roller heads (steel, rubber, stainless), Bar stock heads
- High ones, low ones, heavy duty ones, lockable wheel ones



PIPE ROLLS

PRODUCT CODE: **PTR-S**

- Small 240V portable - 37 mm to 400 mm pipe
- Additional idlers available
- Foot pedal
- 680 kg



PIPE CLAMPS

PRODUCT CODE: **P-C**

- Sumner & JA
- Various sizes



HANDLING EQUIPMENT

Positioners & Manipulators



LARGE INDUSTRIAL 415V POSITIONERS

PRODUCT CODE: **P-L**

- Heavy Duty 415V Input
- Up to 10,000 kgs (10 ton)
- Foot pedal operation



SMALL 240V POSITIONER

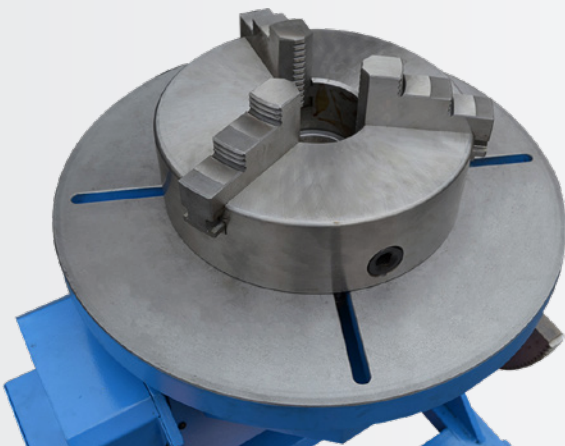
PRODUCT CODE: **P-S**

- Small 240V portable positioners
- Up to 200kg's
- Foot pedal operation

POSITIONER CHUCKS

PRODUCT CODE: **P-C**

- Various size chucks
- Internal or external clamping



WELDING ACCESSORIES



LEADS & REMOTE CONTROLS

PRODUCT CODE: **ALK**

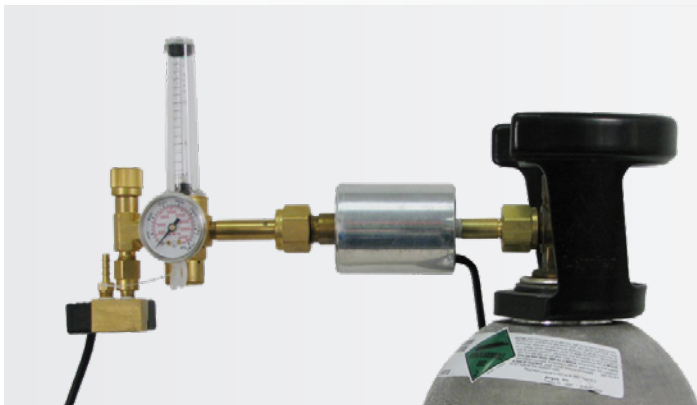
- Full line of all accessories for welding
- Different amperage size cables available
- Different lengths available
- Different connections available (Dinse, Mech, Lugs)
- Remote control pendants & foot controllers



MIG GUNS & TIG TORCHES

PRODUCT CODE: **ALK**

- Full line of MIG guns, standard, Smart controlled
- Push pull also available for aluminium
- Air cooled and water cooled



REGULATORS & HEATERS

PRODUCT CODE: **CO2GH**

- CO₂ MIG / FCAW gas heaters to prevent freezing

OTHER SPECIALTY EQUIPMENT



WELDING CURTAINS

PRODUCT CODE: **WC**

- 2 mtrs high x various lengths
- On lockable castors
- Small portable aluminum frame site kits available

WELDING CONSUMABLES



ARC, MIG, FLUX CORED WELDING CONSUMABLES

PRODUCT CODE: **M/FC-CON**

- Full line of general welding consumables for all processes
- All major brands available



TIG WELDING CONSUMABLES

PRODUCT CODE: **T-CON**

- Full line of general welding consumables for all processes
- All major brands available



SUBMERGED ARC WELDING CONSUMABLES

PRODUCT CODE: **SA-CON**

- Full line of Sub-arc consumables & fluxes
- All major brands available



AIR CARBON ARC & EXOTHERMIC CONSUMABLES

PRODUCT CODE: **LSGR**

- Full line of Air Carbon Arc carbons and Exothermic lances & Slice rods available

GUN & TORCH CONSUMABLE PARTS



MIG GUN CONSUMABLE PARTS

PRODUCT CODE: **MG-CONP**

- Full line of MIG consumables
- All major styles: Binzel, Tweco, Burnard



TIG TORCH CONSUMABLE PARTS

PRODUCT CODE: **TT-CONP**

- Full line of TIG torch consumable parts



PLASMA CUTTING CONSUMABLE PARTS

PRODUCT CODE: **PC-CONP**

- Full line of Plasma Cutting consumable parts



OXY FUEL CUTTING NOZZLES

PRODUCT CODE: **OF-CONP**

- Full line of Oxy Fuel cutting nozzles



W.E.S.S. by Global Welding Technologies Group Pty. Ltd.
107 Cormack Road Wingfield 5013, South Australia, Australia.
Ph: +61 8 8243 2200
wess.com.au A.B.N. 67 634 066 452

GET CONNECTED

