



## Architecture for Religious & Educational Facilities Statement of Qualifications and Experience

### Historic Saint Mary's Church

119 South Prince Street

Lancaster, PA 17603

Attn: Tina Skubon

22 June 2012

June 22, 2012

Tina Skubon, Parish Manager  
Assumption of the Blessed Virgin Mary  
119 South Prince Street  
Lancaster, PA 17603

RE: Request for Qualifications / Proposal - Statement of Qualifications for Architectural Services

Dear Tina:

Thank you for the opportunity to tour your facilities to gain a better understanding of your buildings in terms of your present conditions and programming requirements. MM architects, inc. is pleased to submit our proposal to provide architectural services for your "Legacy Project". We are especially excited since it is just a block from our office. Working on this project would be meaningful to our professional staff that live and participate in the city, sitting on various boards, commissions and committees.

MM architects' professional staff is intimately familiar with the regulatory review process within the City, not only in relation to building code but the review process for new construction within the Historic District of Lancaster. Most recently, we developed the master plans and building designs for the new Stockyards development in the City (Heritage Conservation District), the East King Street Parking Garage (HARB district), Renovations to Saint James Episcopal Church (HARB District), and design of the façade and integration of the Lancaster General Parking Garage into the Heritage Conservation District. Our firm is privileged to have completed renovations at Grace Lutheran Church and currently renovating the Fulton Elementary School, both early 1900 historic buildings originally designed by C. Emlen Urban.

MM architects pride ourselves in developing successful client relationships. A key ingredient in building these relationships is listening to our client's needs and attending to project requirements, allowing us to provide creative, responsive and sensitive project solutions. We believe that our history of receiving repeat and referral work indicates that our solutions to each client's challenges have been successful.

Our proposed team is uniquely qualified for this project because of our extensive local knowledge, national expertise and prior experience working together as a team. Thank you for the opportunity to submit our proposal for this exciting project.

MM architects, inc. looks forward to an opportunity to further share our experience and qualifications with your Development and Preservation Committee.

Respectfully Submitted,  
MM architects, inc.

Maryann Marotta, RA, AIA  
President

A. Donald Main, II, RA, AIA  
Vice President

Theresa Werhel  
Office Manager & Project Assistant



table of contents		page #
1	general summary of the firm	4
2	<b>past experience</b>	
	a. community hall/fellowship hall facilities	5
	b. commercial kitchens experience	6
	c. education/religious education facilities	7
	d. catholic facilities	8
	e. historic structures	12
	f. projects on confined urban sites	14
	g. construction during occupancy	15
	h. design-build	16
	i. sustainable design	18
	j. accessibility	19
3	<b>relevant project case studies 1 - 5</b>	
	1 – St. James Episcopal Church	20
	2 – Fulton Elementary School	22
	3 – Marcus Hook Elementary School	24
	4 – West Nottingham Presbyterian Church	26
	5 – Terrace Residence Halls at Mount Saint Mary's University	28
4	<b>principal architectural staff and resumes</b>	30
5	<b>consultants utilized and resumes</b>	38
	a. experience with principal consultants	50
6	<b>reference letters</b>	51
	a. client and business associate comments	54
7	<b>design build method - project completion data</b>	55
8	<b>additional information</b>	
	a. corporate structure, litigation, insurance	56
	b. technical capabilities - building information modeling (BIM)	57
	c. collaboration	59
	d. giving back to the community	60
	e. distinguishing characteristics	61



## company description:

MM architects is a full-service architectural design firm providing architectural and interior design to educational markets in Pennsylvania, with projects both large and small, simple and complex.

What sets us apart is *listening and dedication to our clients..* Our experience and collaborative design process encourages an open exchange of ideas. We set up charrette style workshop meetings with all stakeholders, which is the first step to understand our clients needs and goals and gives everyone a sense of contribution to the final design solution.

A principal architect is involved in every phase of a project, from planning through final close out. MM architects project team members work closely with our consultants and specialists, who are all dedicated to finding the most innovative, flexible and cost-effective solutions.

We practice the same principals in everything that we do.

Open communication. Good design. Dedicated team. Sustainable strategy. Excellent service.

## professional services

- Architecture
- Interior Design
- Master Planning
- Renovation + Reuse
- Sustainability
- Historic Renovation/Restoration/Infill

## market sectors

- Civic
- Corporate
- Education**
- Healthcare
- Leisure + Cultural
- Real Estate + Strategy
- Religious**
- Transportation + Urban Design

## principals:

Maryann Marotta, A.I.A.

A. Donald Main, A.I.A.

## location:

103 South Duke Street, Lancaster, PA 17602

p | 717.393.3211

f | 717.393.3212

e | mm@mmaia.net

## history

Since its formation in 2001, MM architects has grown and diversified the firm's market sectors and geographic reach to serve clients throughout central Pennsylvania, Maryland and New York. Combining over 50 years of experience, the principals of MM architects are committed to their collaborative design process, truly partnering with their clients and consultants to form professional design teams.

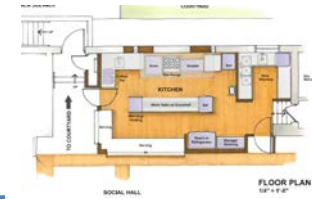
## firm memberships

AIA	American Institute of Architects
AIA - CAE	Council on Architecture for Education
CEFPI	Council of Educational Facility Planners, International
DVASBO	Delaware Valley Association of School Business Officials
CSI	Construction Specifications Institute
ICC	International Code Council
LCC	Lancaster Chamber of Commerce
NTHP	National Trust for Historic Preservation
PASBO	Pennsylvania Association of School Business Officials
PSBA	Pennsylvania School Board Association (Service Associate Member)
USGBC	US Green Building Council

## 2 | a. community hall/fellowship hall facilities



Zion Evangelical Lutheran Church - Sunbury, PA  
Kitchen & Fellowship Hall



Trinity Episcopal Church - Elkton, MD  
Parish House & ADA Accessibility



West Nottingham Presbyterian Church - Colora, MD  
ADA Accessibility



Terraces - Mount Saint Mary's University - Emmitsburg, MD  
Student Lounge



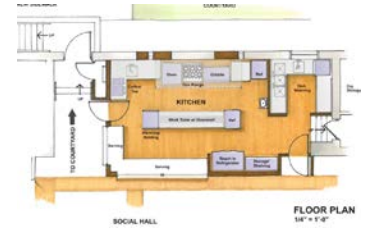
Lancaster Stockyards - CoreSource - Lancaster, PA  
Cafeteria



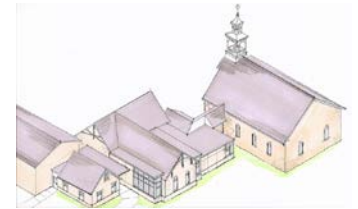
## 2 | b. commercial kitchens



Zion Evangelical Church – Sunbury, PA  
Kitchen & Fellowship Hall



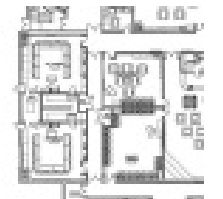
West Nottingham Presbyterian Church – Coloma, MD  
Fellowship Hall & ADA Accessibility



Marcus Hook Elementary School – Marcus Hook, PA  
Commercial Kitchen



Garnet Valley Elementary School – Glen Mills, PA  
Commercial Kitchen



Unionville High School – Kennett Square, PA  
Commercial Kitchen



## 2 | c. education/religious education facilities



Concord Elementary School – Glen Mills, PA  
New Construction of K-2 Educational Facility



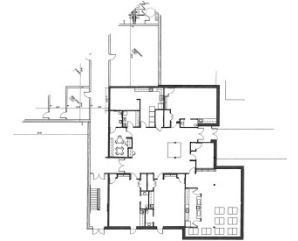
Garnet Valley Middle School – Glen Mills, PA  
Additions & Renovations



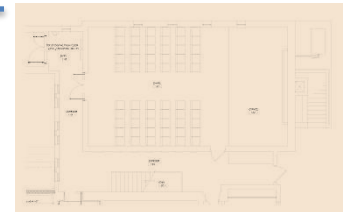
Unionville High School – Kennett Square, PA  
Additions & Renovations



Messiah Village - Mechanicsburg, PA  
Upgrades & Expansion to Children's Family Center



Saint James Episcopal Church – Lancaster, PA  
Multi-Purpose Room /Gathering Space/Children's Chapel



### Mount Saint Mary's University – Emmitsburg, MD

National Shrine - Grotto of Our Lady of Lourdes - Visitor Center

*MM architects has designed this project consisting of a new 4,300 s.f. facility, to include site development and utilities of a one-story steel and heavy timber framed structure. It is currently out to bid with contractors, with construction scheduled to start August 2012, with a March 2013 completion.*

### Mount Saint Mary's University – Emmitsburg, MD

Bradley Hall Faculty Offices

Bradley Hall Archives

Columbarium

Deans' Office Renovations

Horning Lounge Upgrades

Kane Chapel at DuBois Hall

Renovations to President's House

Sheridan Hall Interior Upgrades

Renovations to The Terrace Residence Halls

Mount Village Residences

Renderings and Initial Planning for Delaplaine Fine Arts Center, Veteran's Plaza, Memorial Path



### Immaculata University – Immaculata, PA

Immaculata College, Villa Maria, Lourdes, Nazareth and the Great Hall Renovations

Feasibility and Space Planning, Administrative Offices, Music Department, Classrooms, Dining Center, Book Store, and re-use of original Library for residential spaces.

*(Maryann Marotta, Project Architect, and Carl Kowalski were on original project team while employed at a previous firm)*

### St. Leo the Great – Lancaster, PA

Design and New Construction

*(Maryann Marotta, Project Architect, and Carl Kowalski were on original project team that brought this project to completion, while employed at a previous firm)*

### St. John Neumann – Lancaster, PA

Library Design and Construction Documents

*(Maryann Marotta provided these services as an individual and parish member pro bono effort)*





### Snyder Secary & Associates, LLC (Site/Civil Engineering)

#### Holy Name of Jesus

Worship and Educational Facility (Harrisburg Diocese)



#### Good Shepherd Church (Harrisburg Diocese)



#### St. Joseph's Academy

(Altoona/Johnstown Diocese)



### Providence Engineering Corporation (Structural Engineering)

**St. John Neumann Blessed John XXIII, Lancaster, PA (Harrisburg Diocese):** (Current project) PEC provided structural engineering necessary in the design of a new approximately 18,161sf one story (*phase I only*) educational facility. The phase I portion of construction will include a multi-purpose room, pre-school classrooms, restrooms, and kitchen. We will consider the future effect of phase II and III in our design of phase I.

**St. Mary's Church, Lancaster, PA (Harrisburg Diocese):** Structural report for Saint Mary's Catholic Church  
Providence was retained to address three specific areas of concern:

- Apparent forward sag (toward the congregation) of the floor framing of the raised platform in the area of the Pulpit and the Baptistry. Confirmation of floor load capacity was requested.
- General review of the church's foundations to confirm that no on-going problems exist unattended.
- Concern regarding cracking of exterior walls of the rear school addition.
- Providence visited the site, performed structural review and calculations and prepared a narrative report for the church's use regarding the three concerns above.



**Saint Joseph Church, Dallastown, PA:** Original church steeple fell from top of tower due to rusted connections and overall neglect. Providence Engineering Corporation provided on-site review and structural design/detailing for new steeple to be situated on top of existing steeple tower in the same location as the original.

**St. Ignatius Parish, Forest Hill, MD:** Stair and railing design

**St. Anne's Retirement Community, Columbia, PA:** Size roof framing, garage beams and front porch beams.

**St. Louis Catholic Church, Columbia, MD:** Structural stability review for erection sequence for **Chancel**.

## 2 | d. catholic facilities - consultants

### Moore Engineering Company (Mechanical, Plumbing & Electrical Engineering)

#### **St. Mary's Roman Catholic Church (Harrisburg Diocese)**

Renovations  
Mt. Joy, PA

#### **St. Peter's Catholic Church (Harrisburg Diocese)**

Renovations and Addition  
Columbia, PA

#### **St. Mary's Catholic Church (Harrisburg Diocese)**

New Sanctuary Air Conditioning System  
Lebanon, P A

#### **St. Joan of Arc Church (Harrisburg Diocese)**

Lighting Renovation  
Hershey, PA

#### **St. Joan of Arc Church (Harrisburg Diocese)**

HVAC Renovation  
Hershey, PA

#### **St. Joan of Arc Catholic School (Harrisburg Diocese)**

Feasibility Study  
Hershey, PA

#### **St. Catherine of Sienna (Harrisburg Diocese)**

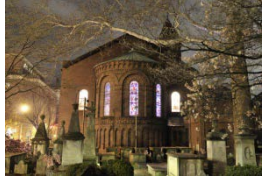
Renovations  
Quarryville, PA

#### **St. Anne Catholic Church (Harrisburg Diocese)**

Kitchen Renovations and Feasibility Study  
Lancaster, PA



## 2 | e. historic structures



Saint James Episcopal Church – Lancaster, PA

Additions & Renovations



Lutheran Theological at Gettysburg – Gettysburg, PA

Renovations & Additions to Valentine Hall



Seminary Ridge Historic Preservation Foundation – Gettysburg, PA

Historic Pathways on the Ridge



Lancaster Theological Seminary – Lancaster, PA

Lark Hall – Connector Addition to Mayer Center



Lancaster Theological Seminary – Lancaster, PA

Richards Hall – Re-Use

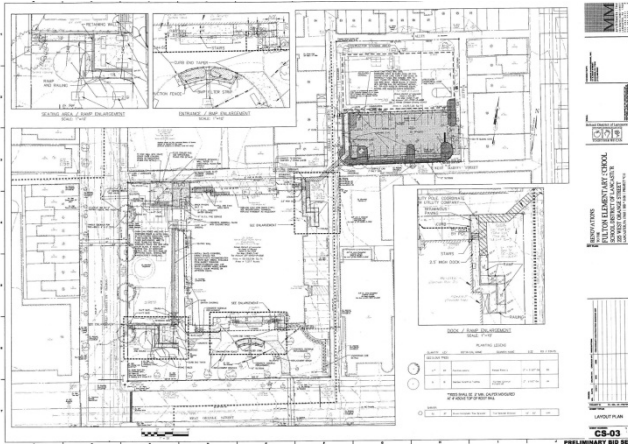


MM architects, inc. - Lancaster, PA

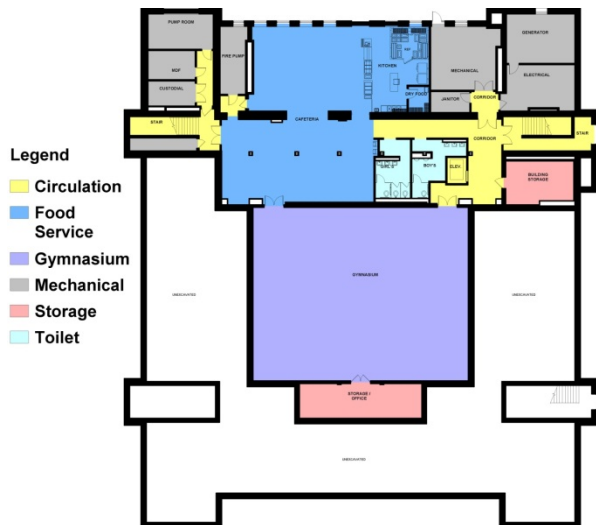
Renovations to Office at  
103 South Duke Street, Lancaster



### HARB submission



Proposed Site Plan



Ground Floor Plan

Our approach to the Historic and Governmental Review Processes includes:

- informing local officials of the project scope and goals at project start – soliciting input from the beginning
- establishing the review process schedule with local officials at project start
- soliciting input early in the design process from governing boards and local officials on design concepts
- presenting sketch plans to the HARB Board, early in the process to provide adequate number of reviews to identify issues early in the design process

The Project Schedule allows for early design input and presentation to the HARB Board, allowing for identification of any issues early in the process, to avoid project scheduling delays.

## 2 | f. projects on confined urban sites – Lancaster, PA



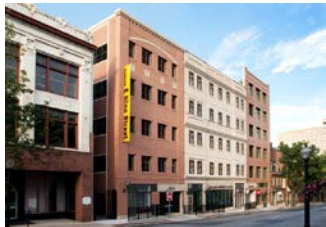
Saint James Episcopal Church  
Renovations & Additions



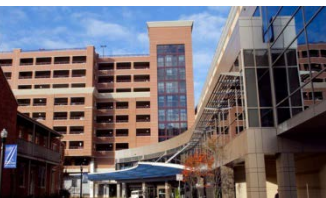
Grace Lutheran Church  
Narthex & Church Entry Renovations



Fulton Elementary School  
Renovations



Lancaster Parking Authority – East King Street Parking Garage  
New Construction



Lancaster General Hospital – Parking Garage  
New Construction





A selected listing of recent design-build projects completed by MM architects follows:

### Religious

#### Mount Saint Mary's University

- National Shrine – Grotto of Our Lady of Lourdes – New Visitor Center
- Bradley Hall Faculty Offices
- Bradley Hall Archives
- Dean's Office Renovations
- Horning Lounge Upgrades
- Mount Village Residences
- President's Office Renovations
- Renovations to President's House
- Sheridan Hall Interior Upgrades
- Renovations to The Terrace Residence Halls

#### Presbytery of Donegal

- Trinity Episcopal Church
- West Nottingham Presbyterian Church

### Education

- Fermanagh Elementary School
- Ferrell Elementary School
- Highland Park Elementary School
- Mount Carmel Area School District
- Tamaqua High School
- West Branch Area School District

### Commercial

- Cargas Systems at Lancaster Stockyards
- CoreSource at Lancaster Stockyards
- McClure Corporate Office Renovation
- National Bank of Rising Sun
- Pennsylvania Renaissance Faire

### Private

- Private Residences in Millersville, Lancaster and Devon, PA
- Private Residences in Manhattan, New York City, NY

MM architects has worked with the following contractors on numerous design-build projects.

ARA Construction Corporation – Curtis Bay, MD

Ebersole Brothers Construction, Inc. – Mount Joy, PA

Grubb Contractors, Inc. – Rising Sun, MD

High Construction Company – Lancaster, PA

McCoy Brothers, Inc. – Carlisle, PA

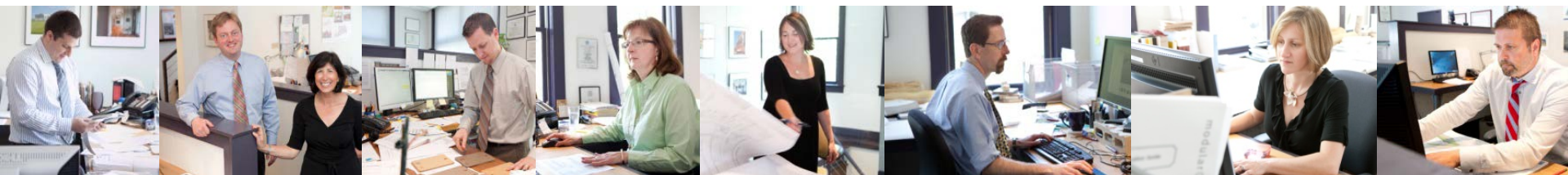
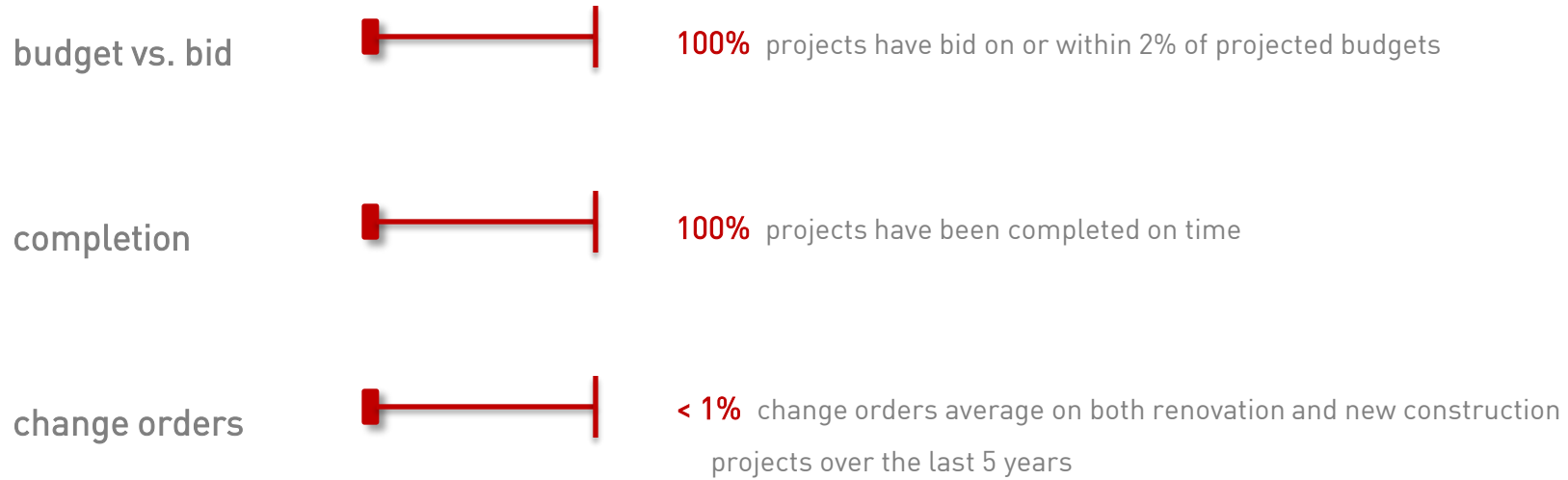
McClure Company – Harrisburg, PA

Wohlsen Construction Company – Lancaster, PA

Our firm takes a collaborative approach on all projects, including capitalizing on the value of the contractor during construction.



### MM architects track record for completing projects on time and on budget



### MM architects, inc. sustainable projects

- utilize USGBC rating system as a design guide even if the building is not a candidate for LEED certification
- has been utilizing principles of integrated design prior to the creation of LEED



Garnet Valley School District  
Garnet Valley Elementary School - incorporated LEED design elements

---

---



Lancaster Stockyards  
Cargas Corporate Offices - LEED Silver Certification  
Stockyard Building #3 - initial planning for LEED Gold or Platinum

---

---



Mount Saint Mary's University  
Welcome Center at Grotto - currently in design for LEED Silver Certification  
Mount Village

---

---



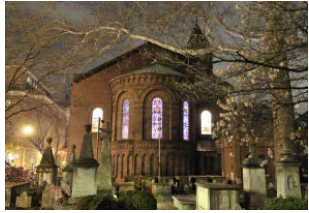
School District of Lancaster  
Rockland Center - currently in design for LEED Silver Certification  
Fulton Elementary School - currently in design for LEED Silver Certification

---

---



Unionville-Chadds Ford Area School District Unionville High School - designed to LEED Silver standards



Saint James Episcopal Church – Lancaster, PA  
Additions & Renovations



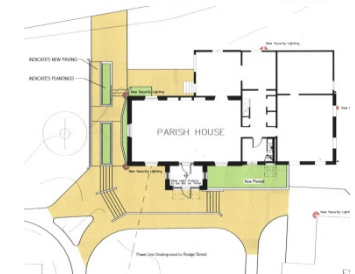
The Terrace Residences at Mt. St. Mary's University – Emmitsburg MD  
Renovations



Valentine Hall at Lutheran Theological Seminary at Gettysburg  
Additions & Renovations



Trinity Episcopal Church – Elkton, MD  
Renovations & ADA Accessibility

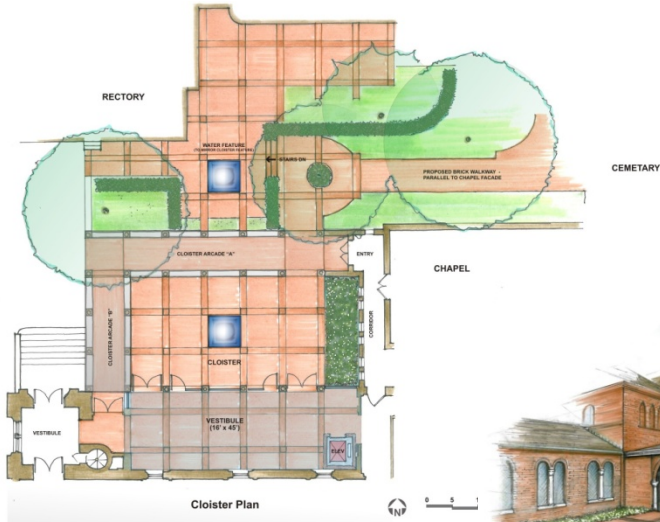


Marcus Hook Elementary School – Marcus Hook, PA  
Additions & Renovations



## 1 | St. James Episcopal Church

name of the project	St. James Episcopal Church Renovations and Addition – 119 North Duke Street, Lancaster, PA 17602
method of delivery	private bid
project cost	1,119,900
date of completion	fall 2012
project square footage	total building = 10,200 sq. ft. / addition = 1,500 sq. ft.
cost of change orders	15,167 to date
general contractor	general   Warfel Construction Company – Guy Kingree, Project Engineer; Dave Sunderland, Project Superintendent
major consultants and principal staff members who worked on the project <u>and</u> will work on Historic St. Mary's	architect   MM architects, inc. – Donald Main, Connie King, Marlin Bert
greatest design challenge	<u>Developing a design solution that provides for expected modern amenities in a highly historic structure.</u> It is important in today's religious communities to provide a more open and transparent approach to a building, areas to gather before and after worship, a high level of accessibility, and adequate restroom facilities which were not a part of original historic buildings. In order to accomplish these goals, a small addition was designed to complete the fourth side of the church's cloister. In order to construction this addition, it necessitated underpinning more than 5' below the original early 1700's church foundation walls.
project description	<p>In 2009 MM architects began working with Saint James Episcopal Church. The church, established in 1744, is a historically significant presence in the city of Lancaster. The project scope includes redevelopment of an existing cloister, general accessibility and the addition of a Narthex, an elevator and ADA toilet facilities.</p> <p>As part of the capital campaign St James added new illumination to both the interior and exterior of the church. The lighting project, which shines light from inside the church out through it's stained glass windows, was the first portion of the renovation project to be completed. The discussion of the exterior lighting began several years ago as a safety concern. Church members wanted more lighting around the building which evolved into a way to highlight the beauty of the red brick building, much of which dates to 1820. Windows overlooking the churchyard to the east and the cloister to the north are also illuminated. Lights are on timers and will shine from dusk until late in the evening. "When the building is not in use, it will look like there is activity there, which is what we want downtown," said Tom Gemmill, of the church's building committee.</p>



cloister addition and ADA upgrades

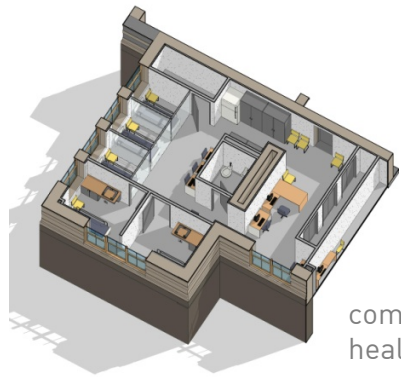
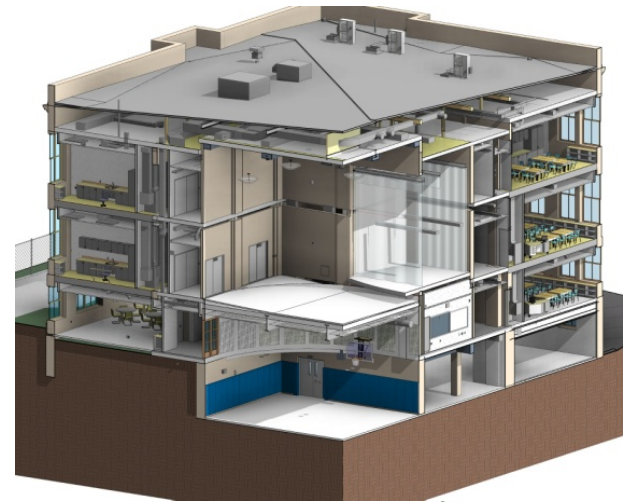
existing cloister



## 2 | Fulton Elementary School

School District of Lancaster

name of the project	Fulton Elementary School Renovations
method of delivery	public bid – School Board awarded contracts on June 19, 2012
project cost	10,783,000
date of completion	Fall 2012
project square footage	78,045 sq. ft.
cost of change orders	N/A at this time
general contractor	general   Lobar, Inc. – Brian Cramer
major consultants and principal staff members who worked on the project <u>and</u> will work on Historic St. Mary's	architect   MM architects, inc. – Donald Main, Connie King, Carl Kowalski, James Parrish structural   Providence Engineering Corporation – Lancaster, PA
greatest design challenge	<u>Take the building constructed in the first decade of the 20<sup>th</sup> century and bring it up to 21<sup>st</sup> century standards</u> in terms of educational space needs, technology and mechanical, electrical and plumbing. The elementary school had been renovated haphazardly over its lifetime. In researching C. Emlen Urban's original design for the interior of the building, the original design principles were used to inform the current space planning.
project description	This project includes interior renovations, which will bring classrooms up to district standards while preserving the historical integrity of the building. All Mechanical, Plumbing, and Electrical systems will be replaced as well.



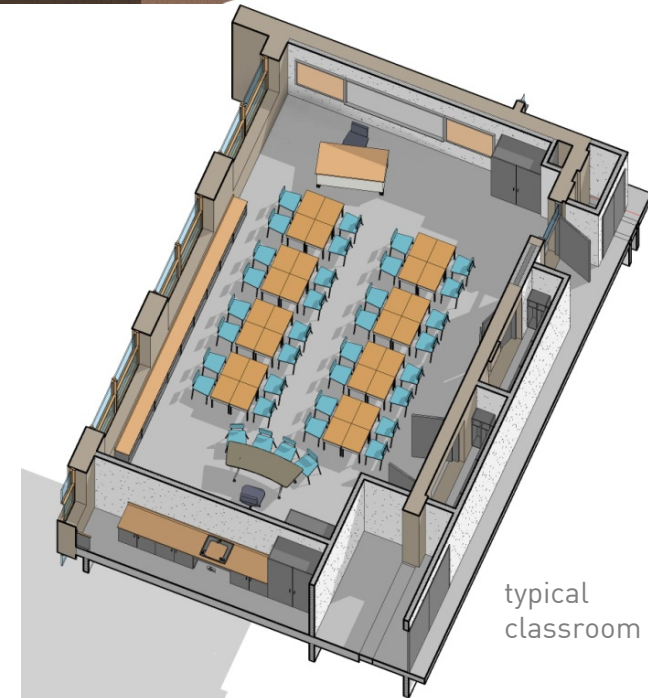
community  
health clinic



administration



classroom



typical  
classroom

## 3 | Marcus Hook Elementary School Chichester School District

name of the project	Marcus Hook Elementary School Renovation and Addition, Including Furnishings
method of delivery	public bid
project cost	11,586,725
date of completion	2009
project square footage	existing renovation = 47,247 / 3 additions total = 9,338
cost of change orders	+ .0039% (due to existing conditions)
general contractor	general   TNT Construction, Inc. – Timothy Donohue
major consultants and principal staff members who worked on the project <u>and</u> will work on Historic St. Mary's	architect   MM architects, inc. – Donald Main, Carl Kowalski
greatest design challenge	<u>Creating a modern addition</u> onto a building to create a new focal point in terms of entry and accessibility. Our solution was to create a new entry that complimented and highlighted the historic structure with the goal of providing a central point of entry.
project description	<p>Marcus Hook Elementary School, built in 1925, was completely transformed for education in the 21st century. This kindergarten to fourth-grade school is located in the center of the Borough of Marcus Hook. The school district was committed to keeping their neighborhood elementary schools within easy walking distance for the students and providing state-of-the-art technology. Classrooms were designed for flexibility and multiple uses allowing for spaces to serve constantly shifting educational paradigms.</p> <p>The architectural elements of the original building were incorporated into the design, most notably, the historical significance of the building pediment – MARCUS HOOK GRAMMAR SCHOOL – which was enclosed within a glass vestibule, visible from the street. The addition provides ADA access to all floor levels. Additional space was situated to complement the existing streetscape and included a new main office, library, kindergarten, media center and computer classroom. Students and the public are now welcomed by the new illuminated clock tower.</p>





new street elevation

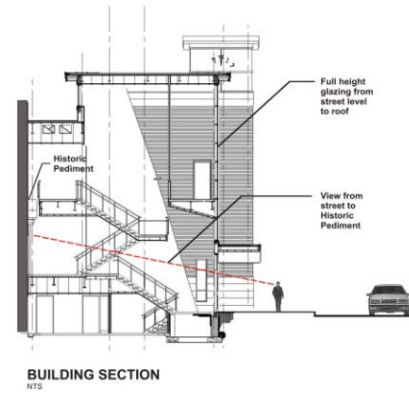


new classroom

media center



before renovation



historic pediment on new main entry vestibule

## 4 | West Nottingham Presbyterian Church

name of the project	West Nottingham Presbyterian Church Renovation
method of delivery	design build
project cost	\$1,200,00
date of completion	Dec 2005
project square footage	3,467 sq. ft. addition
cost of change orders	N/A
general contractor	general   Grubb Contractors, Inc. – Rising Sun, MD – Eric Grubb
major consultants and principal staff members who worked on the project <u>and</u> will work on Historic St. Mary's	architect   MM architects, inc. – Donald Main
greatest design challenge	MM architects were challenged <u>to design a Parish Hall for the West Nottingham Church, that would reflect the historical significance of the church.</u>
project description	<p>West Nottingham Presbyterian Church was founded in the early 1700s and built in 1803. Dr. Finley, pastor of the second Nottingham Church, was an able scholar and he established a school, later known as the West Nottingham Academy. Many men of importance during the colonial and revolutionary period were educated at the Academy, two of which were Richard Stockton and Dr. Benjamin Rush, both signers of the Declaration of Independence.</p> <p>The original chapel is small, therefore the architects created a series of small connected buildings that complement the scale of the historical church chapel. Further preserving the church's history, the chapel walls were left exposed in the new parish building. The new buildings include a fellowship hall, music area, offices and small meeting area.</p>

isometric model of addition and original chapel



Narthex renovations



chapel with addition in background



kitchenette



fellowship hall with exterior chapel wall

## 5 | Mount St. Mary's University - Terrace Residence Halls

name of the project	Terrace Residence Hall Renovations
method of delivery	design build
project cost	18,096,000
date of completion	2011
project square footage	107,230 sq. ft.
cost of change orders	+.014%
general contractor	general   McCoy Brothers, Inc. – Carlisle, PA – Cameron Rembold
major consultants and principal staff members who worked on the project <u>and</u> will work on Historic St. Mary's	architect   MM architects, inc. – Maryann Marotta, Matthew Girolamo
greatest design challenge	<u>Project Phasing</u> : 75% student occupancy was maintained in these residence halls throughout the entire renovation. Action items were to separate construction, maintain noise limits, allow specific hours for noise during construction, working around testing schedules, and maintaining site safety and security so that students were not able to gain access to construction areas.
project description	<p>These phased renovations included more than 100,000 sq. ft. in DuBois (1825), Brute (1848) and McCaffrey Residence Halls (1858) making it the second oldest building on campus. MM architects completed extensive renovations while preserving the historical characteristics of the building. The exteriors of the buildings received general repairs including new roofs, paving, signage and updated furniture.</p> <p>Phasing over a 2-year period was coordinated with the University to provide safe occupancy of 75% of the rooms during the exterior and interior renovations. In the programming and planning of The Terrace, MM architects worked with the University President, Vice President of Finance and Administration, Dean of Student Life, Facilities Staff and Student Representatives to develop a residential community that includes upgrades to residence rooms, introduction of natural light into shared lounge space and study rooms, student reflection space, activities room, game room, living room, fitness room, entry gallery and various ADA upgrades.</p>

clock tower



main entrance



exterior of Terrace



student lounge



dorm room

# 4 | principal architectural staff



Maryann Marotta, AIA:  
Principal Architect

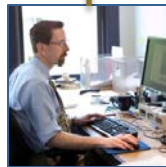
Donald Main, AIA:  
Principal Architect



Christopher Peters, AIA:  
Architect,  
LEED Coordinator



Connie King, AIA:  
Architect,  
Interior Designer



Carl Kowalski:  
Project Manager  
Revit Technician



James Parish:  
Project Manager,  
BIM Coordinator  
Revit Technician



Marlin Bert:  
Designer



Theresa Werhel:  
Office Manager,  
Project Assistant



**Maryann Marotta**  
Principal Architect

Maryann has more than 34 years of professional architectural design experience, starting her own firm in 2001. Her extensive experience in both master planning and building design has enhanced the firm's portfolio of distinguished projects and grown the firm to its current size and market standing.

Her design process begins with *charrette* style workshop meetings, which foster collaboration and ensure a unique design. Maryann approaches each project individually to provide clients with creative solutions unique to their requirements, always including her *best practices* expertise.

She has provided facility planning, master planning and design services for numerous k-12 school and higher education facilities, religious, commercial and historic projects. Specializing in programming, planning, renovations, restorations and new construction, Maryann's *hands-on approach* to design has earned her a reputation for working with her clients in a well coordinated team environment.

As the principal in charge, she manages the firm and is actively involved with her projects from pre-design through construction, and coordinates all specialty consultants.

## RELIGIOUS EXPERIENCE:

- \* **Immaculata College** (Catholic)
  - Great Hall Renovations
  - Lourdes Renovations
  - Nazareth Renovations
  - Villa Maria Renovations
- Lancaster Bible College**
  - New Chapel
- \* **Lancaster Theological Seminary**
  - Chapel Renovations
  - Philip Schaff Library Renovations
  - Richards Hall Renovations
- Mount St. Mary's University - Emmitsburg, MD** (Catholic)
  - Kane Chapel @ DuBois Hall
  - Visitors Center @ Grotto of Lourdes, National Shrine
- St. John Newmann's Catholic Church**
  - Parish Library
- St. Leo's Catholic Church**
  - New Construction
- \* **Trinity Episcopal Church - Elkton, MD**
  - Renovations to Parish House

## \* HISTORICAL EXPERIENCE

## ADDITIONAL HISTORICAL EXPERIENCE:

- East King Street Parking Garage** (HARB District)
- Gettysburg College**
  - White House Renovations
- Lancaster General Hospital Parking Garage** (Heritage Conservation District)
- Mount St. Mary's University - Emmitsburg, MD** (Catholic)
  - Terrace Residence Halls Renovation, including DuBois, Brute and McCaffrey Residence Halls

## RELEVANT K-12 PROJECT EXPERIENCE:

- Garnet Valley School District**
  - District-Wide Feasibility Study / Ed Specs / Plan Con
  - New Garnet Valley Elementary School
  - Renovations & Additions to Garnet Valley High School
  - Renovations & Additions to Garnet Valley Middle School
  - New Administrative Offices
  - New Bethel Springs Elementary School
  - New Concord Elementary School

## RELEVANT K-12 PROJECT EXPERIENCE:

- School District of Lancaster**
  - Renovations to Scheffey Administrative Services Center
  - Code Review & Initiation of Compliance at J.P. McCaskey, East High School
  - Development of Small Learning Communities
  - Renovations to Dauphin Duke Facility for Autistic Center
  - Renovations to Rockland Center for K-5

## Unionville Chadds-Ford School District

- Unionville High School Additions & Renovations & HS, MS Athletic Fields

## EDUCATION:

- Bachelor of Architecture, 1978
- Virginia Polytechnic Institute of Technology & State University

## REGISTRATIONS:

- Pennsylvania, Delaware, Maryland, Washington DC
- NCARB Certified:

## MEMBERSHIPS:

- AIA American Institute of Architects
- AIA - CAE Council on Architecture for Education
- CEFPI Council of Educational Facility Planners, International
- CSI Construction Specifications Institute
- ICC International Code Council
- NTHP National Trust for Historic Preservation
- PSBA Pennsylvania School Board Association

## VOLUNTEER – LOCAL SERVICES:

- Chairperson Manheim Township Code Review Board
- President Lancaster Penn Square Rotary Club
- Advisory Member Historic Preservation Trust of Lancaster County
- Advisory Board Member Thaddeus Stevens College of Technology



**A. Donald Main**  
Principal Architect

Donald began his professional architectural career in 1994 working with other firms in Lewisburg and Lancaster, before joining MM architect as a partner in 2001. His success working across diverse architectural markets in both the public and private sectors, has contributed to the firm's excellent reputation and growth over the past 11 years.

His design approach begins with *charrette* style workshop meetings, which foster collaboration and ensure a unique design. As an architectural planner and designer, Donald specializes in all phases of design through construction administration in k-12 and higher education, corporate, religious, residential and historic preservation.

Donald has a talent for listening to his client's needs and attention to detail, with a track record for completing projects *on-budget* and on-time. Experience on projects of varying size and complexity gives him a broad range of expertise and *problem solving* skills which are essential in today's environment.

As a principal in the firm, Donald is actively involved with his projects from pre-design through construction, including strategic facilities planning, master planning, programming and coordination of specialty consultants.

## RELIGIOUS EXPERIENCE:

- Good Shepherd Lutheran Church
- \* Grace Lutheran Church (Heritage Conservation District –originally designed by C. Emlen Urban)
- Lancaster Bible College  
New Chapel
- \* Lancaster Theological Seminary  
Lark Hall Feasibility Study  
Meyers Hall Feasibility Study
- \* Lutheran Theological Seminary at Gettysburg  
Valentine Hall Renovations & Additions
- \* Rock Presbyterian Church Concepts  
St. James Episcopal Church (HARB District)
- \* West Nottingham Presbyterian Church - *West Nottingham, MD*  
Addition to Historic Church Parish Center

## \* HISTORICAL EXPERIENCE

## RELEVANT K-12 PROJECT EXPERIENCE:

- Chichester School District  
PlanCon  
District-Wide Feasibility Study Update  
Chichester High School Auditorium Renovations  
Marcus Hook Elementary School Renovations  
Replacement of Hilltop Elementary School  
District Administrative Offices Renovations  
Transportation Facility Renovations  
Chichester High School + Middle School Roofing Replacement  
Chichester High School Main Office Renovations + Security Upgrades
- East Lycoming School District  
Renn Elementary School Renovations & Mechanical Upgrades
- School District of Lancaster  
Fulton Elementary School Renovations  
Wheatland Middle School – Capital Projects  
Wheatland Middle School – Summer Roofing 2012
- West Branch Area District of Lancaster  
Architectural Support for MPE Upgrades

## ADDITIONAL HISTORICAL EXPERIENCE:

- Chichester School District  
Marcus Hook Elementary School Renovations
- Erie County Courthouse
- Robert Nix Courthouse
- School District of Lancaster  
Fulton Elementary School Renovations (originally designed by C. Emlen Urban)
- Stockyards Development (Heritage Conservation District)

## EDUCATION:

- Bachelor of Fine Arts, 1994  
Rhode Island School of Design
- Bachelor of Architecture, 1995  
Rhode Island School of Design

## REGISTRATIONS:

- Pennsylvania, Maryland, New Jersey and New York  
NCARB Certified

## MEMBERSHIPS:

- AIA American Institute of Architects
- AIA – CAE Council on Architecture for Education
- CEFPI Council of Educational Facility Planners, International
- CSI Construction Specifications Institute
- ICC International Code Council
- NTHP National Trust for Historic Preservation
- PSBA Pennsylvania School Board Association
- USGBC US Green Building Council

## VOLUNTEER – LOCAL SERVICES:

- Board Member Lancaster HARB
- Board Member LHANDS (Lancaster Housing and Neighborhood Development)
- Advisory Member Historic Preservation Trust of Lancaster County





**Christopher R. Peters**  
Registered Architect  
LEED Coordinator

Christopher Peters has been in the professional practice of architecture since 2002, including a broad and varied cross section of project types. He has been immersed in both public and private grade school design projects, as well as being involved with a wide range of higher education experience. His background also includes various corporate and institutional projects.

His penchant for detail, proves to be a valuable asset in the efficient coordination of projects for both colleges and schools. Christopher's design expertise also extends to public institutions, municipal work, commercial office buildings, and religious institutions with a focus on historic preservation.

Christopher serves as the LEED coordinator on MM architects projects.

Christopher practiced in Raleigh, North Carolina prior to joining MM architects. He was afforded the opportunity to be involved with all aspects of design and construction from concept sketches and client programming to document coordination and construction administration.

## RELEVANT PROJECT EXPERIENCE

### K-12 EDUCATION

- Chichester School District
  - \* Marcus Hook Elementary School Renovations & Additions
- School District of Lancaster
  - Rockland Center Renovations
  - \* Fulton Elementary School Renovations
- Unionville-Chadds Ford School District
  - Unionville High School Renovations & Additions
- Ravenscroft School, Raleigh, NC
  - Stadium Gateway
  - Upper School Renovation
  - College Counseling Center Renovation
- Wake County Public Schools, Raleigh, NC

### HIGHER ED

- Albright College
  - Student Center Renovations
  - Dining Hall Renovations
- \* Lutheran Theological Seminary at Gettysburg
  - Historic Pathways
- East Carolina University, Greenville, NC
  - Scott Dorm Feasibility Study

### MUNICIPAL

- Bucks Mont Katrina Animal Shelter (Mississippi)

### RESIDENTIAL

- Manhattan (New York) Residence

### COMMERCIAL

- Commercial Space at 24 E. King St., Lancaster
  - housing Tellus 360 Shop
- Cargas - Lancaster Stockyards
- CoreSource - Lancaster Stockyards
- Mount Hope Winery, Intercourse, PA
- Nissley Wine Shop
- PA Arts Experience - Artisans Gallery & Wine Bar
- Pennsylvania Renaissance Faire

### HISTORICAL

- Seminary Ridge Historic Preservation Foundation
  - Historic Pathways

### RELIGIOUS

- Camp Mount Luther
  - Master Plan
  - Signage
- Mount Saint Mary's University
  - Visitor/Welcome Center at the Grotto
- St. James Episcopal Church (HARB District)
- Zion Evangelical Lutheran Church
  - Kitchen Renovation
  - Signage

### \* HISTORICAL EXPERIENCE

### EDUCATION

- Pennsylvania State University, 2002
  - Bachelor of Architecture,
  - with Honors in Architecture
  - Thesis emphasis: Affordable Housing

- Sede di Roma, 2000
  - Rome, Italy
  - Fall Semester architectural study

### REGISTRATIONS

- Pennsylvania
- North Carolina
- NCARB Certified

### MEMBERSHIPS

- American Institute of Architects



## Connie King

### Registered Architect Interior Designer

Connie King has been in the professional practice of architecture since 1994, including a broad and varied cross section of project types. Her repertoire includes both private and public educational design, and a wide range of healthcare, residential, religious, non-profit and commercial projects.

She has extensive experience working with various entities in the construction industry, including municipalities, code review agencies and the PA Department Labor & Industry.

Connie practiced with an architecture firm in Lancaster, worked as a sole proprietor, and spent many years working with her family construction company on design-build type projects prior to joining MM architects. She is involved with all aspects of design and construction from concept sketches and client programming to document coordination and construction administration.

## RELEVANT PROJECT EXPERIENCE

### K-12 EDUCATION

Avon Grove School District

Avon Grove High School Renovations & Additions

School District of Lancaster

Rockland Center Renovations

\* Fulton Elementary School Renovations

### HIGHER ED

Albright College

Dining Center

Delaware Valley Community College

Barclay Square Branch Campus

Exton Branch Campus

Messiah College

New Science Building

\* Lutheran Theological Seminary at Gettysburg

Chapel Renovations

\* Gettysburg College

White House Renovation

### SENIOR LIVING

Landis Homes Retirement Community

Assisted Living Renovations

Cottage Renovations

Hildebrandt Daycare Center / Landis Homes

Renovations & Additions

\* HISTORICAL EXPERIENCE

## RELIGIOUS

Bethany United Church of Christ

Chapel Addition

Evangelical United Methodist Church

Church Renovations

Trinity Lutheran Church, New Holland, PA

Addition and Renovations

St. James Episcopal Church, Lancaster, PA

Addition and Renovations

## COMMERCIAL

\* Stirling Mansion

Renovation of Historic Bed & Breakfast

## HEALTHCARE

Lancaster General Health Campus

Pharmacy Renovations

Family Eye Group

Office Renovations

Dr. Richard Albright, DDS (orthodontist)

Multiple location office renovations

Dr. Jose Perez, DDS

New Dental Office

## EDUCATION

North Carolina State University, 1994

Master in Architecture

Drexel University

Bachelor of Science in Interior Design

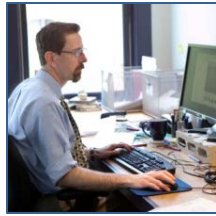
Prague Institute, Prague Czech Republic

Summer Semester architectural study

Thesis emphasis: Holistic Design

## REGISTRATIONS

Pennsylvania



**Carl Kowalski**  
Project Manager

Carl Kowalski has been working in the architectural and construction industry since 1986.

His experience as a design professional and project manager has primarily focused on educational and commercial projects, having produced design and construction documents and performed project coordination and supervision for over 15 different school districts and college clients.

In his role as Clerk of the Works for a Public School District, Carl successfully managed a \$52 million, 6-building, district-wide construction project. In addition to project management, Carl has a strong background in CADD knowledge management and was responsible for establishing in-house best practices for coordination of drafting standards and detail libraries, as well as managing and reviewing drafting teams.

## RELEVANT PROJECT EXPERIENCE

### SCHOOL FACILITIES MANAGEMENT

Clerk of Works for Marple Newtown School District

### DRAFTING & DESIGN

#### K-12 EDUCATION

- \* Chichester School District
- East Lycoming School District
- Garnet Valley School District
- Marple Newtown School District
- Mount Carmel Area School District
- School District of Lancaster
- Unionville Chadds Ford School District
- West Chester Area School District

#### HIGHER EDUCATION

- Delaware County Community College
- Gettysburg College
- Immaculata College
- Thaddeus Stevens College of Technology
- Franklin & Marshall College
- Lancaster Theological Seminary
- Lutheran Theological Seminary at Gettysburg
- \* Mount Saint Mary's University

## RELIGIOUS EXPERIENCE:

- \* **Grace Lutheran Church** (Heritage Conservation District –originally designed by C. Emlen Urban)
- \* **Immaculata College** (Catholic)
  - Great Hall Renovations
  - Lourdes Renovations
  - Nazareth Renovations
  - Villa Maria Renovations
- Lancaster Bible College**
  - New Chapel
- \* **Lancaster Theological Seminary**
  - Chapel Renovations
  - Philip Schaff Library Renovations
  - Richards Hall Renovations
- Lutheran Church of the Good Shepherd**
- \* **Lutheran Theological Seminary at Gettysburg**
  - Valentine Hall Renovations & Additions
- Mount St. Mary's University - Emmitsburg, MD** (Catholic)
  - Kane Chapel @ DuBois Hall
  - Visitors Center @ Grotto of Lourdes, National Shrine
- St. James Episcopal Church** (HARB District)
- St. Leo's Catholic Church**
  - New Construction
- \* **Trinity Episcopal Church - Elkton, MD**
  - Renovations to Parish House
- \* **West Nottingham Presbyterian Church - West Nottingham, MD**
  - Addition to Historic Church Parish Center

## \* HISTORICAL EXPERIENCE

### EDUCATION

- Assoc. Architecture Degree,
- Assoc. Computer Drafting Degree
- Pittsburgh Technical Institute, 1986



**James Parrish**  
Project Manager  
BIM Coordinator

Jim Parrish has over 30 years experience in the architectural design arena ranging from board drafting to current integrated design processes.

He is a seasoned architectural CADD/BIM professional able to utilize, manage and maintain AutoCAD and Revit (3D design software) which drives increased efficiency in design and documentation processes.

Over his career he has completed a broad range of projects including: education, government, corporate, retail, historic, religious, institutional, and residential.

His participation as a part of the design team includes valuable input on incorporation of green building technology, latest trends/training on BIM (building information modeling), review of designs for compliance with building codes and ADA regulations and monitoring documentation from a quality assurance viewpoint to prevent change orders.

## RELEVANT PROJECT EXPERIENCE:

## DRAFTING & DESIGN EXPERIENCE:

### K-12 EDUCATION

School District of Lancaster

Rockland Center

\*Fulton Elementary School

## PREVIOUS FIRM EXPERIENCE:

Upper Dublin High School

\$120 million addition/renovation

Council Rock High School

\$100 million new high school

Radnor High School

\$60 million addition/renovation

Radnor Elementary School

first green elementary school in PA (1997)

Radnor District Office

Reading School District – Millmont

Elementary / Magnet School

Delaware State University

athletic buildings

Milton Hershey School

Springboard Academy

## COMMERCIAL:

Lancaster Laboratories

Major Addition/Renovation

Boys and Girls Club of Lancaster –

Dauphin Street Facility and

Camp Snyder

Federal Mogul

Offices and Manufacturing Facilities

Alcoa Alumax Mill Products

Manufacturing Facilities

Dodge-Regupol

Offices

## \* HISTORICAL EXPERIENCE

## EDUCATION:

Associate Degree in Architectural Drafting

Thaddeus Stevens College of Technology, 1981



**Marlin Bert**  
Designer

Marlin Bert has over 25 years experience in the architectural and construction industry. His experience as a design professional has primarily focused on educational, historic and commercial projects.

In addition to interior design, Marlin has extensive experience in producing detailed architectural renderings, isometrics, and models.

His abilities enable MM architects to provide timely sketches and renderings allowing clients to clearly visualize their projects.

## RENDERING & DESIGN EXPERIENCE:

### K-12 EDUCATION

- Chichester School District
- Garnet Valley School District
- School District of Lancaster
- Unionville Chadds-Ford School District

### HIGHER EDUCATION

- Delaware County Community College
- Gettysburg College
- Immaculata College
- Lancaster Theological Seminary
- Lutheran Theological Seminary at Gettysburg
- Mount Saint Mary's University

### COMMERCIAL

- National Bank of Rising Sun
- Pennsylvania Renaissance Faire
- Lancaster Stockyards

### HISTORICAL

- Seminary Ridge Historic Preservation Foundation
- Gettysburg College
- White House Renovations

### OTHER

- Private Manhattan, NY Residence

## RELIGIOUS EXPERIENCE:

- Grace Lutheran Church (Heritage Conservation District –originally designed by C. Emlen Urban)
- \* Lancaster Theological Seminary
  - Chapel Renovations
  - Philip Schaff Library Renovations
  - Richards Hall Renovations
- \* Mount St. Mary's University - *Emmitsburg, MD* (Catholic)
  - Kane Chapel @ DuBois Hall
  - Visitors Center @ Grotto of Lourdes, National Shrine
- \* Rock Presbyterian Church Concepts
- St. James Episcopal Church (HARB District)
- St. Leo's Catholic Church
  - New Construction
- \* Trinity Episcopal Church - *Elkton, MD*
  - Renovations to Parish House
- \* West Nottingham Presbyterian Church - *West Nottingham, MD*
  - Addition to Historic Church Parish Center

## \* HISTORICAL EXPERIENCE

## EDUCATION:

- Pennsylvania College of Art & Design
- Millersville University

## TEACHING:

- Adjunct Instructor,
- PA College of Art & Design

## MEMBERSHIP:

- Member of The PA Arts Experience

## Snyder, Secary & Associates, LLC

Snyder, Secary & Associates, LLC was established with the vision of providing our valued clients with expert consulting engineering services throughout Pennsylvania. Our mission is to exceed our clients' expectations by providing a high quality, cost-effective approach to design and engineering solutions while offering personalized attention to detail and committing to a timely delivery on each and every project. These core principles serve as the foundation for guiding the success and growth of our firm.

At Snyder, Secary & Associates, LLC our value driven approach to professional service focuses on providing creative designs for complex engineering issues while understanding the need for practical, constructible and common sense solutions. We recognize that in this changing and challenging environment, the need for affordable and innovative engineering solutions is paramount and, as such, we work hard to eliminate unnecessary costs and steps in the planning and design process.



address | 2000 Linglestown Road, # 304  
Harrisburg, PA 17110  
telephone | 717.651.1010  
fax | 717.651.1022  
primary contact | Ronald M. Secary, P.E.  
e-mail | rsecary@snydersecary.com



## 5 | consultants utilized and resumes – site/civil engineering

Ronald M. Secary, P.E.  
Principal / Partner

**EDUCATION:** Mining Engineering - Pennsylvania State University

**REGISTRATION:** Professional Engineer, PA: PE-050619-E, 03/13/1996

**AFFILIATIONS:** American Society of Professional Engineers  
Greater Harrisburg Association of Realtors  
West Shore Chamber of Commerce  
Harrisburg Chamber of Commerce  
Chambersburg Chamber of Commerce

**EMPLOYMENT:** Snyder, Secary & Associates, LLC  
Harrisburg, Pennsylvania. Principal / Partner

**EXPERIENCE:** Mr. Secary has over 25 years of progressive civil engineering and land development consulting experience representing a broad spectrum of clients in both the public and private sectors. That experience has included a wide variety of development projects of varying size and complexity spanning the commercial, residential, institutional and industrial markets throughout Pennsylvania and the Mid-Atlantic Region. Mr. Secary has also provided consulting services to a diverse group of local municipalities as their municipal engineer and currently serves in that capacity for Lower Windsor Township, York County.

Currently Mr. Secary serves as a principal and partner for the firm and is involved in the management of its corporate functions. In addition he serves as principal level contact and project manager for the many of the firm's key clients. Typically, Mr. Secary's project related duties involve site selection related services, feasibility studies and conceptual planning, due diligence activities, site design, zoning and land use entitlements, obtaining environmental, access and other regulatory permits, utility and infrastructure design, construction administration, property and right-of-way acquisition, development of project budgets and schedules, value engineering analysis and other miscellaneous project related activities.



**RELIGIOUS/ EDUCATIONAL PROJECT EXPERIENCE:** The following represent a few of the more significant religious and educational land development projects that Mr. Secary has been involved with from site concept/feasibility through entitlement and construction.

**Holy Name of Jesus Worship and Educational Facility, Lower Paxton Township, Dauphin County** – Provided site and civil engineering services for the design of a new 26,000 square foot church, expansion of the existing school and related site improvements. The project involved a full range of services including site engineering, municipal approvals and construction phase services. The project also required a high level of coordination with church committees, Diocesan officials, project architects and other team members in a design-build environment.

**St. Joseph's Academy, Harris Township, Centre County** – Provided conceptual planning and engineering services for a proposed multi-purpose facility at the Catholic Academy located in Boalsburg, PA. The project involves the addition of a gymnasium as well as outdoor tennis courts and a multi-purpose athletic field on the existing campus.

**Good Shepherd Church Addition, Camp Hill Borough, Cumberland County** – Site engineering, entitlements, permitting and construction phase services for a proposed addition to the Good Shepherd Church facility in Camp Hill.

**Hershey Medical Center Expansion, Derry Township, Dauphin County** – Provided site master planning, site design and engineering services, entitlement and permitting as well as bid and construction phase services on a wide variety of projects in the recent expansion to the educational/ medical campus. This included new campus housing, on-site parking garage, cancer center, medical offices, research facilities, etc.

**Christ Community Church Addition, Lower Allen Township, Cumberland County** – Provided feasibility analysis, site engineering, municipal approvals and associated permitting for a 30,000 square foot expansion of the church and classroom facilities as well as related site and infrastructure improvements.

## Providence Engineering Corporation

PROVIDENCE ENGINEERING CORPORATION provides structural engineering design and analysis services to the building industry. We provide the benefit of thirteen registered engineers with over 275 years of successive collective experience in the structural design of new buildings; renovations, remodeling and additions to existing buildings; as well as shop drawing review and connection design.

Established in Pennsylvania in 1992, we commit to the direct involvement of the firm's engineers in all phases of the project from conceptual planning and structural system studies through the construction of the project. We believe this level of involvement ensures timely decision making during a project which is essential to maintaining schedules and budgets.

Our structural engineering services for existing buildings and facilities include:

- Feasibility Studies, Reports and Construction Cost Comparisons.
- Rehabilitation, Renovation and Loading Capacity Evaluation.
- Expansion Potential, both Horizontal and Vertical.
- Structural Bracing Retrofit for Seismic and Wind Loads.
- Expert Witness Testimony.

We also offer the following additional qualifications:

- Active Registration as Professional Engineers in 43 states plus Nova Scotia.
- Current experience with the International Building Code and the International Existing Building code.
- Current liability insurance policy limit of \$1,000,000.00 annually.
- Complete CAD facilities utilizing AutoCAD Release 2010 along with Revit Release 2010 with in-house plotting capabilities and the ability to email files to remote computers and/or plotters.

The individual experience of our Structural Engineering staff is supplemented by the firm's digital capabilities. We operate several analysis and design programs, which provide accurate, rapid results for the evaluation or design of all the major structural materials for buildings: reinforced concrete, structural steel, wood and masonry. This capability permits the comparison of several viable framing options during the conceptual or schematic phases of the project; helping to ensure an economical choice of framing system(s) for design development and final design. Cost comparisons are made on an installed material quantity basis with extension by unit cost data. This construction cost data is obtained through published data from R.S. Means and from our numerous contacts in the local construction industry. This data can be used as a basis for establishing construction budgets for structural work as well as for structural system selection.

PROVIDENCE  
ENGINEERING  
CORPORATION

*Structural Engineers*

address		10 Eisenhower Boulevard Lancaster, PA 17603
telephone		717.509.7000
fax		717.509.7810
primary contact		David W. Bernhardt, PE
e-mail		dwb@proveng.com



# 5 | consultants utilized and resumes – structural engineering

**David W. Bernhardt, P.E.**  
Vice President of Operations

**Education:**

Bachelor of Architectural Engineering - Structural Option  
The Pennsylvania State University, 1992

**Professional Licenses:**

Maryland      New Hampshire      New York  
Pennsylvania      New Jersey      Michigan  
Vermont

**Professional Organizations:**

American Institute of Steel Construction  
American Society of Civil Engineers  
Pennsylvania Society of Professional Engineers  
Concrete Reinforcing Steel Institute  
American Institute of Architects

**Representative Projects:**

- First Quality Tissue - Lock Haven, Pennsylvania
- Quarryville Retirement Community - Thompson Building Addition  
Quarryville, Pennsylvania
- Shirk Stadium - Albright College  
Reading, Pennsylvania
- Hampton Inn - Ephrata, Pennsylvania
- Rio Sport and Health - Rockville, Maryland
- Hersheypark Music Box Theatre  
Foundation and Structural Coordination  
Hershey, Pennsylvania
- MCI WorldCom - Columbia, Maryland
- Muncy State Correctional Institution  
Muncy, Pennsylvania
- White Marsh Elementary School Addition  
St. Mary's County, MD
- Riverside Elementary School Addition  
Fairfax County, VA

**Engineering Experience:**

Structural Engineer – 1992 to Present  
Providence Engineering Corporation –  
August 2003 to Present

Mr. Bernhardt's structural engineering experience spans a wide variety of structures, including corporate office campuses, schools, churches, hospitals, assisted living facilities, mission-critical internet facilities and theatres. Structural framing systems for these facilities have utilized structural steel, cast-in-place concrete, masonry, light gauge metal and wood. He has designed various foundation systems including shallow spread footings, caissons, auger cast piles and geo-piers. Beyond traditional building design, he has been involved in feasibility studies, construction cost comparisons, forensic investigations, rehabilitation, renovation, structural due-diligence reports and load capacity evaluation.

David's project experience has included projects in locations throughout the United States including the West Coast and South Florida. In addition to engineering design, David has also been a guest lecturer for the AIA as well as speaking to secondary and college aged students about structural engineering.

**PROVIDENCE  
ENGINEERING  
CORPORATION**

*Structural Engineers*



# 5 | consultants utilized and resumes – structural engineering

**Jeffrey L. Schnupp, P.E.**  
Senior Project Engineer

**Education:**

Bachelor of Science  
Structural Design & Construction Engineering Technology  
The Pennsylvania State University, 1989

**Professional Licenses:**

Pennsylvania      Indiana                  New Jersey

**Professional Organizations:**

American Institute of Steel Construction  
Light Gauge Structural Engineers Association

**Representative Projects:**

Turkey Hill Dairy Office Building & Renovations  
Conestoga, Pennsylvania

Sunset Harbor Marina Boat Storage Facility  
Essex, Maryland

Calvary Full Gospel Church  
Fairless Hills, Pennsylvania

Halifax United Methodist Church Addition & Renovations  
Halifax, Pennsylvania

Adhesive Research Office Addition and Laboratory  
Glen Rock, Pennsylvania

Direct Wire & Cable Warehouse Addition  
Denver, Pennsylvania

Dutch-Way Farm Market  
Myerstown, Pennsylvania

Shady Maple Smorgasbord  
East Earl, Pennsylvania

Windsor Commons Strip Mall  
York, Pennsylvania

**Engineering Experience:**

Structural Engineer – 1989 to Present  
Providence Engineering Corporation -  
November 1998 to Present

Mr. Schnupp has experience in a wide range of multi-story structures, which include manufacturing facilities, churches, storage facilities and office buildings. Structural framing systems for these facilities have utilized structural steel, pre-cast concrete plank, cast-in-place concrete, masonry, light gauge metal and wood. His foundation design experience includes shallow spread footings, grade beams and mat slabs.

Jeff has gained special knowledge of cold-formed light gauge metal design at Providence Engineering Corporation with numerous projects involving panelized light gauge wall systems. His specialized engineering experience of light gauge metal is a valuable asset to the firm and its clients.

PROVIDENCE  
ENGINEERING  
CORPORATION

*Structural Engineers*



## **Edward H. Starr, E.I.T.**

Engineer-In-Training

### **Education:**

Bachelor of Science, Civil Engineering  
Structural Option  
The University of Delaware, 2001

### **Professional Licenses:**

Engineer-In-Training

### **Professional Organizations:**

BIA of Lancaster County  
American Institute of Steel Construction

### **Representative Projects:**

Lancaster Bible College Chapel  
Lancaster, Pennsylvania

Nissley Vineyards  
Stone Mill Renovations  
Bainbridge, Pennsylvania

Lancaster Ultragraphics  
Offices & Warehouse  
Landisville, Pennsylvania

Huffaker Engineering – Infineon Raceway  
Shop Renovations  
San Francisco, California

Franklin & Marshall College Row  
Steel Connection Design  
Lancaster, Pennsylvania

First Quality Tissue  
New Tissue Manufacturing Building  
Lock Haven, Pennsylvania

Effie Ophelia's Bistro  
Structural Modifications to Existing Building  
Lancaster, Pennsylvania

### **Engineering Experience:**

Structural Engineer – 1998 to Present  
Providence Engineering Corporation–  
March 2006 to Present

Mr. Starr has experience in the construction industry, working for architectural firms prior to joining Providence Engineering Corporation. He has designed structures consisting of a variety of materials including steel, wood and concrete; including structural design for projects on the west coast. Ed has contributed to the structural design of commercial, residential and industrial projects; ranging from small structural renovations of historic buildings to the design of structural steel connections and the design of a new, multi-acre, manufacturing facility.

Ed is currently engaged in the process of obtaining his professional license and is planning to sit for the Professional Engineering exam in the fall of 2011.

PROVIDENCE  
ENGINEERING  
CORPORATION

*Structural Engineers*



## 5 | consultants utilized and resumes – structural engineering

**Gretchen L. Berkheimer**  
CAD Operator

**Education:**

Associates Degree in the Applied Science of  
Architectural Technology, 1995  
Thaddeus Stevens College of Technology

**Representative Projects:**

Lebanon Valley Cold Storage  
Freezer, dock, process and office areas  
Lebanon, Pennsylvania

Mother Parkers  
Coffee roasting plant  
Ashland, Virginia

Hauck Logistics  
Metal building with mezzanine  
York, Pennsylvania

Conestoga Wood Specialties, Inc.  
Metal building wood shop and truck shop  
East Earl, Pennsylvania

Turkey Hill Dairy  
Conestoga, Pennsylvania

Pilgrim's Pride  
Pittsburg, Texas

Amy's Kitchen  
White City, Oregon

**Drafting Experience:**

CAD Operator – 1995 to Present  
Providence Engineering Corporation -  
July 2004 to Present

Mrs. Berkheimer has spent her career building upon her initial training as a CAD operator. She is proficient in the most recent versions of AutoCAD and Revit, and readily assists in cross-office coordination to help when different office's need to view, modify, plot and transmit other office's documents. Her expertise ranges from a firm grasp of PaperSpace/ModelSpace drawing creation, E-Transmissions, Layer Management and Control; and PDF, Tiff, DXF, DWG file management.

Gretchen is in charge of Providence Engineering Corporation's (PEC) CAD department. She manages the workload, scheduling and quality standards that are essential to the running of the department and the production of PEC's documents. In addition to traditional drawing creation, the CAD department at PEC also offers the capability to scan drawings to file and quickly create large sets of documents with a state of the art digital copy/scan/plot large format plotter.

Most recently, Gretchen has added 3-Dimensional Building Information Modeling (BIM), using AutoDesk's Revit, to her resume of drafting capabilities.

**PROVIDENCE  
ENGINEERING  
CORPORATION**

*Structural Engineers*



## Moore Engineering Company

Moore Engineering Company was founded in 1961 as a Professional Engineering firm dedicated to the application of the latest design methods consistent with sound engineering practice. Our firm maintains a full staff of Mechanical Engineers, Electrical Engineers, LEED Accredited Professionals, Designers, Draftsmen and other Technicians for a total of 18 employees at our office in Lancaster, Pennsylvania.

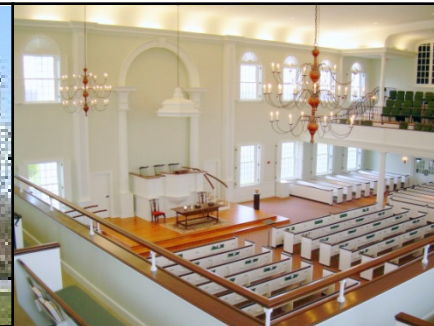
Our projects include Places of Worship, Educational Buildings, Historical Facilities, Corporate Headquarters, Banks, Municipal Offices, Retail Centers, High Rises, Theatres, Fire Stations, Medical Facilities, Industrial Buildings, Hotels, Condominiums, and Elderly Housing Complexes. Moore Engineering continues to be a key player in the revitalization of the City of Lancaster. Our work has included the renovation of Central Market, Lancaster City Hall, Southern Market, the Lancaster Fire Stations, School District of Lancaster Buildings, the Lancaster Library, and several of the Parking Garages. We have also been involved in many Green Building Design Projects including more than 20 LEED projects.



address | 3637 Columbia Avenue  
Lancaster, PA 17603

telephone | 717.285.3141  
fax | 717.285.2443

primary contact | Kenneth L. Kauffman, PE, LEED AP, Vice President  
e-mail | [kenk@mooreengineering.com](mailto:kenk@mooreengineering.com)



## 5 | consultants utilized and resumes – MPE engineering

**KENNETH L. KAUFFMAN, P.E., LEED AP**  
VICE PRESIDENT  
MECHANICAL ENGINEER

### PROFESSIONAL TRAINING AND EXPERIENCE:

2010 - Present National Council of Examiners for Engineering and Surveying  
2009 - Present Certified as a LEED Accredited Professional  
2004 - Present Vice President of Moore Engineering Company, Lancaster, PA  
1985 - Present Employed with Moore Engineering Company, Lancaster, PA  
1996 Licensed as a Professional Engineer in PA  
1994 Bachelors Degree in Structural Design and Construction  
Engineering from Penn State University

### PROFESSIONAL ACTIVITIES AND SERVICES:

2012 F&M Science Fair Judge  
2012 Future Cities Competition Judge  
2011 Guest Geothermal Heat Pump Presenter/Lecturer at West Point Military Academy  
2010-Present Planning Commission - Warwick Township, Lancaster Co.  
2010-Present Alternative Energy Ordinance Committee - Warwick Township, Lancaster Co.  
2010-Present Transportation and Infrastructure Committee - Warwick Township, Lancaster Co.  
2003-2010 Zoning Hearing Board - Warwick Township, Lancaster Co.  
2004-Present Lancaster-Lebanon Science & Technology Alliance Student Education Program  
1989-Present American Society of Heating, Refrigeration and Air Conditioning Engineers Member

### DUTIES AND ACTIVITIES:

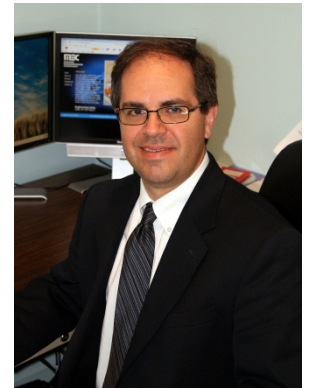
Mr. Kauffman is Vice President of Moore Engineering Company. In addition to his executive responsibilities, he serves as a Mechanical Project Manager. These responsibilities include the design and specification of HVAC, Plumbing, and Fire Protection systems. Specific tasks include mechanical system design and selection, specification preparation, construction administration, energy life cycle cost analysis, feasibility studies, and overall project coordination.

He has prepared numerous feasibility studies and system life cycle cost analysis for various facility types. The studies include an existing conditions outline, code review, life expectancy of the systems, efficiency of the systems, comparisons of potential system replacement or modification options, advantages and disadvantages of the options, as well as the related first costs, operational costs, and life cycle-costs. These studies are then utilized by the client to plan for the future maintenance and replacement needs of the building systems.

Mr. Kauffman plays an active role in the development and implementation of "Green Design Concepts" in various types of facilities. Many of his projects are LEED certified or are in the process of being certified. Even when LEED is not a desired direction, Mr. Kauffman provides the client with options for applying energy smart solutions to basic designs.

Mr. Kauffman holds Professional Engineering licenses in Pennsylvania, Maryland, and Virginia and is registered with the National Council of Examiners for Engineering and Surveying (NCEES).

**MEC**  
**MOORE**  
**ENGINEERING**  
**COMPANY**



# 5 | consultants utilized and resumes – MPE engineering

**JOHN E. HUDACEK, P.E.**  
ELECTRICAL ENGINEER

## **PROFESSIONAL TRAINING AND EXPERIENCE:**

2011 National Council of Examiners for Engineering and Surveying  
2006 - 2009 Master of Engineering in Fire Protection Engineering,  
University of Maryland  
2005 - Present Electrical Engineer at Moore Engineering Co., Lancaster PA  
1998 - 2005 Electrical Engineering experience as Electrical Engineer for  
JDB Engineering, Inc., York PA  
1992 - 1997 Bachelor of Science in Electrical Engineering Technology,  
Pennsylvania State University

## **PROFESSIONAL ACTIVITIES AND SERVICES:**

Member National Fire Protection Association

## **DUTIES AND ACTIVITIES:**

Mr. Hudacek is an Electrical Project Engineer for Moore Engineering Company and is responsible for the electrical systems design of assigned projects. Duties include specification preparation, design and coordination with architectural and other engineering disciplines, and selection of equipment and systems.

Mr. Hudacek has extensive experience with institutional, commercial, industrial and educational buildings and their electrical power and lighting requirements, as well as design experience in communications, sound systems, specialty systems, and computer network infrastructures for customized installations.

## **EXPERIENCE AND QUALIFICATIONS:**

Work experience includes design and construction observation for Educational, Institutional, Commercial, Residential, Government, and Industrial facilities. Specialized experience includes fire alarm system design.

Routine duties include design of interior and exterior lighting systems, medium and low voltage power distribution, fire alarm and security systems, sound, video, data, and telecommunications systems.

Mr. Hudacek regularly surveys existing electrical systems including lighting and power distribution to evaluate the age reliability, suitability, safety and maintenance requirements and costs of those systems. He prepares evaluations related to potential energy reduction through electrical lighting upgrades and modernization.

Mr. Hudacek holds a Professional Engineering licenses in Pennsylvania and is registered with the National Council of Examiners for Engineering and Surveying (NCEES). He also holds a certificate from the National Institute for Certification in Engineering Technologies (NICET) in Fire Protection Engineering Technology Fire Alarm Systems.

**MEC**  
**MOORE**  
**ENGINEERING**  
**COMPANY**



## Clark Food Service Equipment

Clark Food offers food service equipment solution for a variety of operators all over the east coast. It has three main departments: account sales department, bid/spec and design/build. Their designers are Certified Food Service Professionals who know how to make your experience run smoothly. From purchasing food service equipment and supplies to designing and installing food service operation, Clark Food is your source for reliability and quality.

Clark Food designers can help you with:

- Equipment options based on budget constraints
- Equipment layout
- Overall facility layout
- Utility considerations and options
- Food safety and health concerns



address | 2209 Old Philadelphia Pike  
Lancaster, PA 17602

telephone | 717.392.7363

fax | 717.392.8133

primary contact | Rick Reardon, Senior Design and Equipment Specialist

e-mail | rreardon@cfse.biz





## Richard Reardon II



**Objective** Commercial Food Service Design

**Functional Summary** I started commercial kitchen design in 1969, with Parr Equipment, until my present employment with Clark Food Service Equipment. I have attended many factory schools, as they have become available, during my tenure. I also spent two years doing design and spec work for Culinary Design, located in Blue Bell, PA. while employed by Clark Food Service.

**Employment** 1986 – Present Clark Food Service Equipment, Lancaster, PA 17602

**Equipment Specialist**

- Design Commercial Kitchens for Schools, Healthcare, Restaurants, Churches & Fire Companies
- Written Specifications

**School & Healthcare Design References**

Unionville Chadds Ford School District  
 Chadd's Ford Elementary (2003)  
 Marple Newtown School District  
 Paxton Hollow Middle School (2001)  
 Marple Newtown High School (2000)  
 Garnet Valley School District  
 Bethel Springs Elementary (2001)  
 Garnet Valley Middle School (1997)  
 Garnet Valley High School (2000)  
 Garnet Valley Elementary (2004)  
 Lancaster Bible College (2000)  
 Conestoga Valley School District  
 Conestoga Valley High School (1989)  
 Leola Elementary (1990)  
 Smoketown Elementary (1990)  
 Lancaster Mennonite High School (1997)  
 Blue Mountain School District (1992)  
 Avon Grove High School (1991)  
 Immaculata College (2002)  
 Penn Delco School District  
 Parkside Elementary (2002)  
 Sacred Heart University (2003)  
 Daniel Boone Area School District  
 Daniel Boone High School (1998)  
 Masonic Village – Elizabethtown  
 Masonic Village – Lafayette Hill  
 Ashlar Village – Wallingford, Connecticut  
 The Hill at Whitmarsh – Philadelphia  
 Westrum Harleysville Sr. Campus – Philadelphia  
 Shannondell at Valley Forge – Community Building 1

Shannondell at Valley Forge – Community Building 2  
 Meadows at Shannondell – Healthcare Building  
 Zion United Home - Lititz  
 Moravian Manor – Lititz  
 Club at Shannondell – Country Club  
 Dallas Country Club  
 Luther Acres – Lititz  
 Linden Hall – Lititz  
 University of South Florida – Redesign  
 Stone Ridge Village  
 University of Hawaii  
 Martin Elementary  
 Wharton Elementary  
 Edward Hand Middle School  
 Washington Elementary  
 Lafayette Elementary  
 Nazareth Academy High School  
 Mahanoy Middle School  
 Ross Elementary  
 Rockland Elementary

**Manufacturers School**

Frymaster  
 Hobart  
 Groen  
 Servolift Eastern  
 Harford Duracool

**Accreditations**

CFSP Certification (Certified Food Service Professional)  
 ServSafe Certification

## 5 | a. experience with principal consultants

			# of Projects Completed Together	Construction Value of Projects Completed Together
site design & civil engineers	<b>Snyder Secary &amp; Associates, LLC</b>	Ronald M. Secary, PE - Lead	2	7,562,168
structural engineers	<b>Providence Engineering Corporation</b>	David W. Bernhardt, PE – Lead Jeffrey L. Scnhupp PE, Sr. Project Engineer Edward H. Starr, EIT Gretchen L. Berkheimer, CAD Operator	3	15,358,922
mechanical , electrical & plumbing engineers	<b>Moore Engineering Company</b>	Kenneth L. Kauffman, PE, LEED AP – Lead John E. Hudacek, PE	3	15,964,521
kitchen design	<b>Clark Food Service Equipment</b>	Rick Reardon, Senior Designer & Equipment Specialist		<i>the principal architect has worked with Rick Reardon at Clark Food Service Equipment to provide kitchen design and equipment since the 1980's, utilizing them on numerous higher ed, K-12 and religious projects</i>

# saintJames

episcopal church | lancaster

June 21, 2012

## Commendation of M+M Architects

While Saint James Episcopal Church is one of the finest churches and historic church campuses in Pennsylvania, it had very little capital investment in the last 50 years. We needed to become fully accessible; more attractive as a campus; and able to incorporate new technologies for multi-media worship in more flexible worship and meeting spaces. M+M architects listened carefully and guided us wisely in creating a realistic campus plan, which had a clear understanding of what was possible and most urgent from both ministry and fundraising perspectives. They blended innovative design and new materials as well as matching the arts and crafts design and Romanesque revival architecture with salvaged materials and local artisan products. Their architectural and engineering experience in building in and around historic structures meant we had total confidence in their plans and the complex underpinning required.

The effect of the project is an outstanding and cost effective blending of architectural styles that sensitively creates holy space that both historic and contemporary. M+M's care and skill in guiding us through the challenges of managing both the design and building phases has been remarkable. They were equally adept at working with anxious clergy and parishioners; and addressing the proper concerns of city planners and a rigorous historic architectural review processes. They understand as a team the tensions of offering a 21st century ministry from a historic campus and the importance of keeping all the stakeholders apprised of process and decision making timetables. I could not have hoped for a more professional, creative or effective firm of architects with which to work.



The Rev. David W. Peck+  
Rector

119 North Duke Street  
Lancaster, PA 17602  
717-397-4858  
717-397-7548 fax  
office@stjameslanpa.org  
www.stjameslanpa.org

founded 1744

## Saint James Episcopal Church Renovations Case Study #1


 a PPL company 

4101 North Sixth Street  
P. O. Box 1579  
Harrisburg, PA 17105-1579  
717.232.9743 T • 717.236.5239 F  
www.mcclureco.com

June 21, 2012

To Whom It May Concern,

I highly recommend MM Architects for your upcoming renovation project.

I have worked closely with MM Architects in various capacities for about ten years. We have partnered with them on design – build projects on many occasions, including two delicate renovations to aging church facilities.

In one case their team was charged with integrating the many trades associated with installing a new pipe organ within an existing choir loft, while simultaneously providing a new HVAC system for the Sanctuary. In the other they creatively altered the gothic façade of a 100-year old building to enhance the street-front appearance and congregational activities within the Narthex. This second project also included a very difficult HVAC upgrade. In both cases MM Architects successfully integrated new mechanical and structural systems into aging facilities while respecting the visual and acoustical aesthetics of the worship space.

From a design – build perspective MM Architects is entirely unique. They are skilled at developing projects within stated budgetary and scheduling constraints. They respect the opinions of all project stake holders, exuding a spirit of servant leadership. They will not walk away from any difficulties (which are inevitable on any renovation project) and will see your project through to final completion. It is truly a pleasure to work with them.

Please feel free to call or e-mail me if you have any further questions regarding my experiences with MM Architects. My telephone number is (717) 232-9743, and my e-mail address is [dankerr@mcclureco.com](mailto:dankerr@mcclureco.com).

Most Sincerely,



Daniel P. Kerr, P.E.  
Director, Design – Build Services

Lutheran Church of the Good Shepherd  
– Lancaster, PA  
Nave Renovations  
Project Cost: \$869,561

Grace Lutheran Church – Lancaster, PA  
Narthex Renovations  
6,000 Sq. Ft  
Project Cost: \$700,000

**TIMOTHY C. HARRISON,  
DEVELOPER  
900 SOUTH AVENUE, SUITE 300  
STATEN ISLAND, NY 10314**

January 31, 2012

To Whom It May Concern:

It is with pleasure that I write to describe my experience as a client of MM Architects, Inc. ("MM"). I engaged Maryann Marotta and Donald Main, and their team, to provide architectural and construction supervision services in connection with the development of two first-class office buildings – one consisting of 47,250 SF, the other consisting of 11,500 SF – as part of the redevelopment of the Lancaster Stockyards property in the City of Lancaster, Pennsylvania. The buildings opened, on time and on budget, in the summer of 2010.

I worked closely with MM on those buildings for more than two years. During that time, MM skillfully quarterbacked the design and entitlements process -- coordinating the efforts of engineers, contractors, landscape architects and other professionals to provide both the tenants and the City of Lancaster with work product that was functional, consistent and professional. MM proved to be adept at understanding both the tenants' and the City's goals for the project, and harmonizing those goals with the design, function and budgets of the buildings. I was impressed with MM's creativity, and with their collaborative – and diplomatic – approach to design, budgeting and construction supervision. They also effectively managed the City approval process, particularly that of the Heritage Conservation District Historical Commission, and clearly have cordial and constructive working relationships with City planning and zoning personnel. Their fees were fair, reasonable and well within my architectural services budget. Their conceptual design and construction drawings were impeccably accurate, and always on time. MM

**TELEPHONE ~ (718) 568-3507/FACSIMILE ~ (718) 568-3552  
E-MAIL ~ TCH@TCHDEV.COM**

-2-

also taught me (and my tenants) a great deal about green building construction. Both of the buildings incorporate a number of green elements. One has achieved LEED Silver certification, thanks in part to the solar panels, Trombe walls and renewable materials that MM incorporated in the design.

Throughout the project, I was impressed with MM's people. MM architects are knowledgeable, creative, astute, practical and effective. They are good listeners. They think well on their feet in public hearings and meetings. They are ethical and honest. They demonstrate great attention to detail. They are problem-solvers. They make projects happen.

I would recommend MM without hesitation for all facets of design and construction supervision. MM's architects are truly first-rate.

Should you have any questions, please feel free to contact me at (718) 568-3507. Thank you for your consideration.

Very truly yours,

Timothy C. Harrison

**Lancaster Stockyards  
(These two projects were design/build with Wohlsen Construction.)**

**Cargas Systems – 11,500 sq. ft. New Construction: \$2,023,126**

**CoreSource – 45,000 sq. ft. New Construction : \$5,539,042**

**TELEPHONE ~ (718) 568-3507/FACSIMILE ~ (718) 568-3552  
E-MAIL ~ TCH@TCHDEV.COM**

## 6 a. | client and business associate comments

“... MM skillfully quarterbacked the design and entitlements process -- coordinating the efforts of engineers, contractors, landscape architects and other professionals to provide both the tenants and the City of Lancaster with work product that was functional, consistent and professional.... I was impressed with MM’s creativity, and with their **collaborative** – and diplomatic – approach to design, budgeting and construction supervision.... Their fees were fair, reasonable and well within my architectural services budget. Their conceptual design and construction drawings were impeccably accurate, and always on time...”

Timothy Harrison, Stockyard Developer

“...MM architects... brought a confident **enthusiasm** to work making the project seem simple. They work tirelessly together as a team. They are well organized, very responsive, available and extremely thorough. Their attention to detail and ability to present issues concisely and clearly, to the public, as well as the various Historical Boards / Non-Profits (HARB, HPT, etc) seemed to be a very easy task for them to execute.... MM architects are local, and their knowledge of the local building codes, experience within the **community** and their ability to work through the paperwork give them the label that they “will get it done”, whatever it may be.”

Mark Vergenes, Chairman, Lancaster City Parking Authority

“Having worked with other firms, what truly distinguishes this team is their willingness to **listen** to the needs of the client and respond accordingly... take the time to not only meet with you but to create a synergy during the planning process... **patiently** explain and guide all parties through the process to include costing and estimating, zoning and code compliance, change orders, etc.... They possess the ability to work with all knowledge levels of construction and design.... I recommend MM architects... without hesitation.”

Thomas P. Matthews, Executive Director, Lancaster City Parking Authority

“Credit this success to 1) your willingness to spend time with owners, listening and understanding their needs 2) thorough planning during the design and development to insure that the needs of the owner are met... 3) the **quality** of the construction documents that are reflected in close competitive bidding and an absolute minimum of change orders....”

William D. Wilkinson, President, Garnet Valley Board of School Directors

“...[O]n each of our project teams they assembled a very competent team of professionals who worked together very well and who were very thorough in their design... very responsive to our needs and they maintain open communications... demonstrate such a high level of expertise and **professionalism**”

Rick Hostetler, Supervisor of Buildings and Grounds ,  
Unionville-Chadds Ford School District

“...MM architects was outstanding in providing a design that worked for us from an operating standpoint as well as pushing the envelope to “go **green**.” Their innovative ideas helped to create a building which is both functional and economical.... All parties involved in the project showed foresight and vision to realize a building which will minimize the effect on the environment and positively affect the community in which it is located.”

Susan Eberly, Executive Assistant, Cargas Systems

“...provided **excellent** design, bid specifications and project management. They always respond to our questions and concerns in a timely manner and make themselves available for meetings, often with little notice. I highly recommend this firm to anyone needing architectural services for either large or small building projects.”

Janice Miller Lion, Business Administrator, Chichester School District

“...[T]heir **experience** and common sense approach makes a project run smoothly and efficiently”

Len Miscannon, Assistant Director Plant Operations & Construction Services,  
Delaware County Community College

“...[D]uring the design and development of the Queen Street Parking Garage showed sensitivity to the aesthetics of the neighborhood and worked **seamlessly** with Lancaster General and Lancaster City Officials to accommodate the need for an attractive addition to the city streetscape while meeting our project functional and budget goals.... demonstrated repeatedly that they are highly skilled, technically competent, strongly motivated and **dedicated** to meeting all their customer’s requirements... would highly recommend....”

Joseph A. Puskar, Vice President, Customer Support Services,  
Lancaster General Hospital

*Data on the percentage of projects completed using the design-build method of project delivery in the last five (5) years.*

Year	Total Number of Projects Completed	Number of Design Build Projects Completed	% of Design Build of Overall
2007	57	15	26
2008	50	18	36
2009	60	25	42
2010	43	20	47
2011	48	24	50
2012 to date	33	12	36

### additional information

#### corporate structure

MM architects, inc. is structured as a private S Corporation in Pennsylvania.  
MM architects is a registered (#120228) women-business enterprise (WBE) by the Commonwealth of Pennsylvania.

#### litigation

No pending legal proceedings have been filed by an Owner for any project which MM architects, inc. has provided architectural services.

#### insurance requirements and limits

MM architects, inc. carries the following insurance:

Commercial General Liability

Each Occurrence \$1,000,000

Fire Damage \$1,000,000

Personal & Adv. Injury \$1,000,000

Aggregate \$2,000,000

Automobile Liability

Bodily Injury and Property Damage \$1,000,000

Workers' Compensation Per state requirements

Professional Liability

Per Claim \$2,000,000

Aggregate \$2,000,000

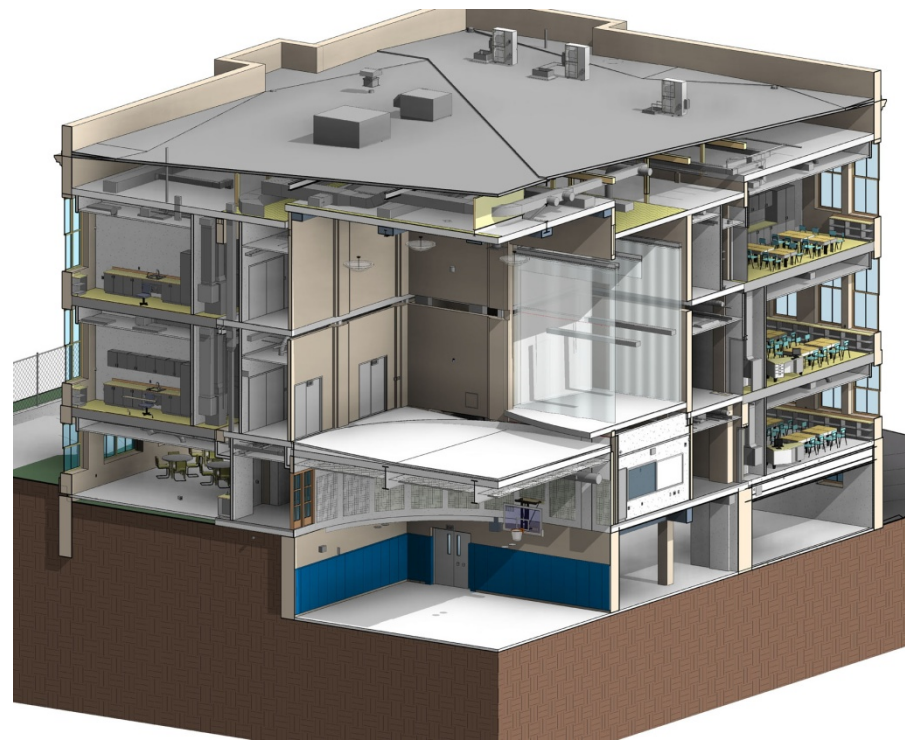
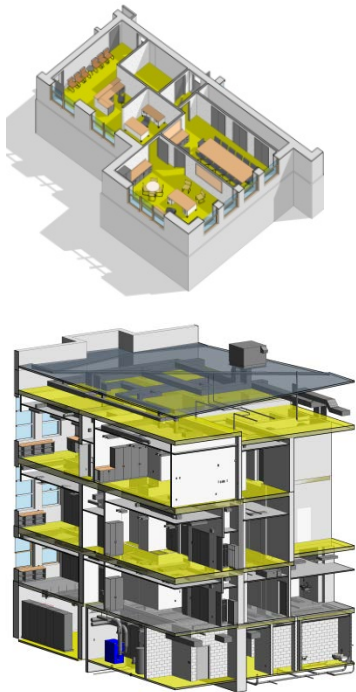


# 8 | b. technical capabilities – building information modeling (BIM)

## Revit / BIM

building information modeling

- experience completing projects utilizing BIM
- preparation of design and construction documentation
- manage sustainable infrastructure
- results in well coordinated building systems
- trouble-shooting early in the design process
- all project team members and sub consultants will use Revit
- valuable tool for maintenance following construction



## data management technology

experience with construct ware

- experience managing projects utilizing the latest technology
- speeds project completion
- cost effective management tool
- exchange of critical information

# 8 | b. technical capabilities – building information modeling (BIM)

option 1



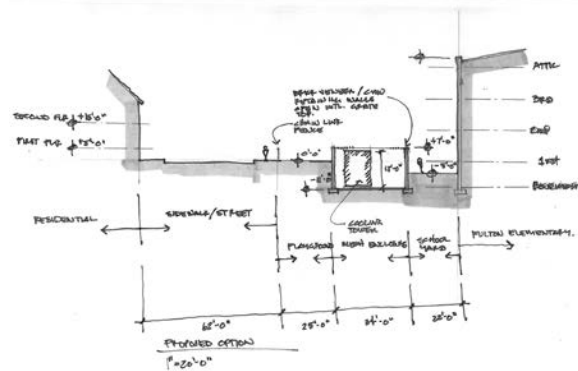
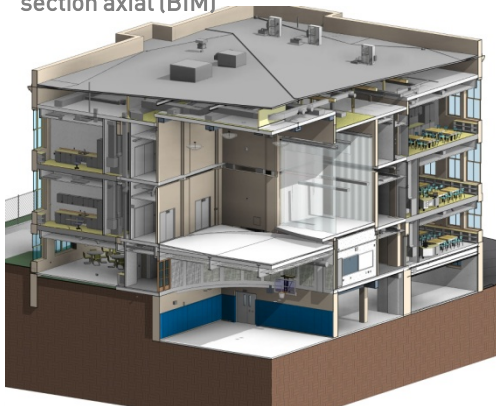
option 2



option 3



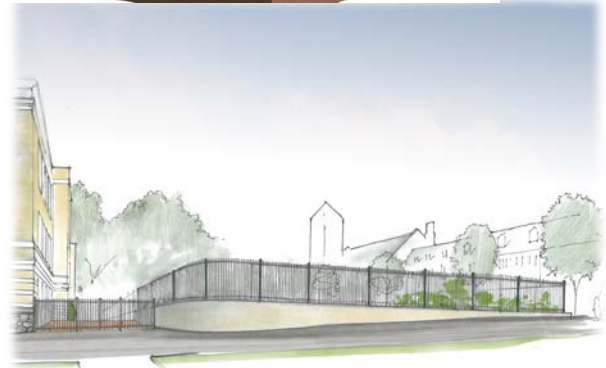
section axial (BIM)



MM architects can utilize Building Information Modeling (BIM) in the preparation of design and construction documentation for the Historical St. Mary's Church project. This project delivery method results in well coordinated building systems and trouble-shooting early in the design process.

The result of a project using BIM is a three dimensional, digital representation of your school's components. All project team members can use this single model to coordinate among all disciplines involved in the project throughout the design and construction phases.

The BIM model will also become a valuable tool for maintenance following construction.



# collaboration...creativity...communication

We practice the same principals in everything that we do.

**Open communication.**

**Good design.**

**Dedicated team.**

**Sustainable strategy.**

**Excellent service.**

**Cost effective.**

specialists in charrette / workshop style meetings with all end users

charrette workshops

what sets us apart is listening and encouraging an open exchange of ideas

open + inclusive planning



MM architects professional staff is committed to working, living and participating in our community.

## Employee service to local community

**Maryann Marotta:** Chairperson - Manheim Township Code Review Board  
President - Lancaster Penn Square Rotary Club  
Advisory Member, Historic Preservation Trust of Lancaster County  
Advisory Board Member, Thaddeus Stevens College of Technology

**Donald Main:** Lancaster HARB Board  
Board Member of LHANDS (Lancaster Housing and Neighborhood Development)  
Advisory Member to Historic Preservation Trust of Lancaster County

**Connie M. King:** Board of Trustees New School of Lancaster  
Steering Committee Buy Fresh Buy Local Lancaster

**Marlin Bert:** Hospice of Lancaster County  
Schreiber Pediatric Center  
Arch Street Center  
Leadership Lancaster

## MM architects - Service Projects

**Children Deserve a Chance Foundation** - MM architects has volunteered our services to the Foundation to design a new facility in Lancaster City.

**Bucks Mont Animal Shelter** - MM architects has volunteered with the Bucks Mont effort to help rebuild an animal shelter in Mississippi following the Hurricane Katrina damages.

**LHANDS (Lancaster Housing & Neighborhood Development)** - MM architects volunteered Code Compliance Drawings for a property at 24 East James Street owned by Grace Lutheran Church which houses low-income apartments.

**Power Packs Project** - The Power Packs Project supplies weekend food and nutritional information to families. MM architects volunteered to provide floor plans for and code review for an office renovation.

**Railroad Museum** - Connie King, as a volunteer, designed the interior displays for the Railroad Museum.

**Leola War Memorial** - Connie King volunteered to provide construction drawings for interior renovations.

**St. James Warehouse** - Maryann Marotta volunteered design and construction document services to provide occupancy for Parish Youth Services and Community Activities.

**Lancaster Public Library** - Assisting with donor recognition signage.

**North Museum** - Record as-built condition drawings for future planning purposes.

## Educational presentations

**PSBA** Construction Summit – Design Tools for a Successful Project

**NSBA** Delivering Your Project on Time and on Budget

**PASBO** Keeping Your Project Out of Litigation

# Lancaster County Projects

## MM architects | inc

Professional staff project experience within Lancaster County, since 1978. The professional staff of MM architects | inc. is committed to working, living and participating in our community.



Lancaster Stockyards



Cargas Systems



CoreSource



East King Street Parking Garage



Prince Street Garage Helix



Lancaster General Hospital Parking Garage



Lancaster General Hospital Parking Garage



Fulton Bank



Educators Insurance Co.



PA College of Art & Design



Alumni Sports & Fitness Center



150 North Queen St.



Lancaster Newspapers



St. James Episcopal Church



103 South Duke St.