

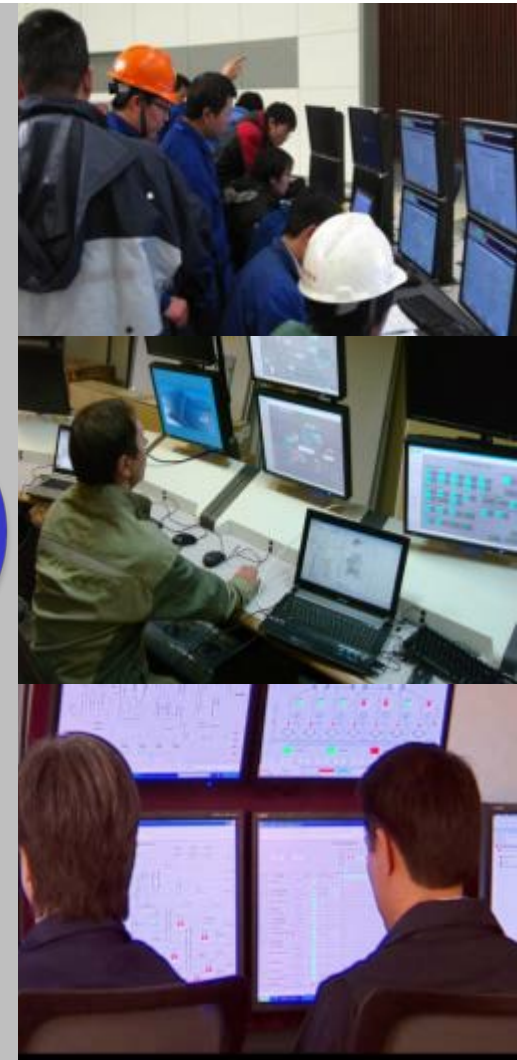


2014 Honeywell Users Group Europe, Middle East and Africa

## HMI of the Future with Experion Orion Console and Experion Collaboration Station

Andrew Stuart & Annemarie Diepenbroek, Honeywell

## Challenges in Today's Control Rooms



## Honeywell Control Room of the Future Program

### Innovation in Control Room Solutions







2014 Honeywell Users Group Europe, Middle East and Africa

## Experion Orion Console

# Orion Console Benefits

## Operators Can Do More

- Operators can do more – effectively handle a greater scope of responsibility
- Assess and respond faster to abnormal situations
- More alert, comfortable and reduced stress and fatigue

## Reduced Cost of Ownership

- Savings in initial installation and ongoing support



# Single Visual Workspace



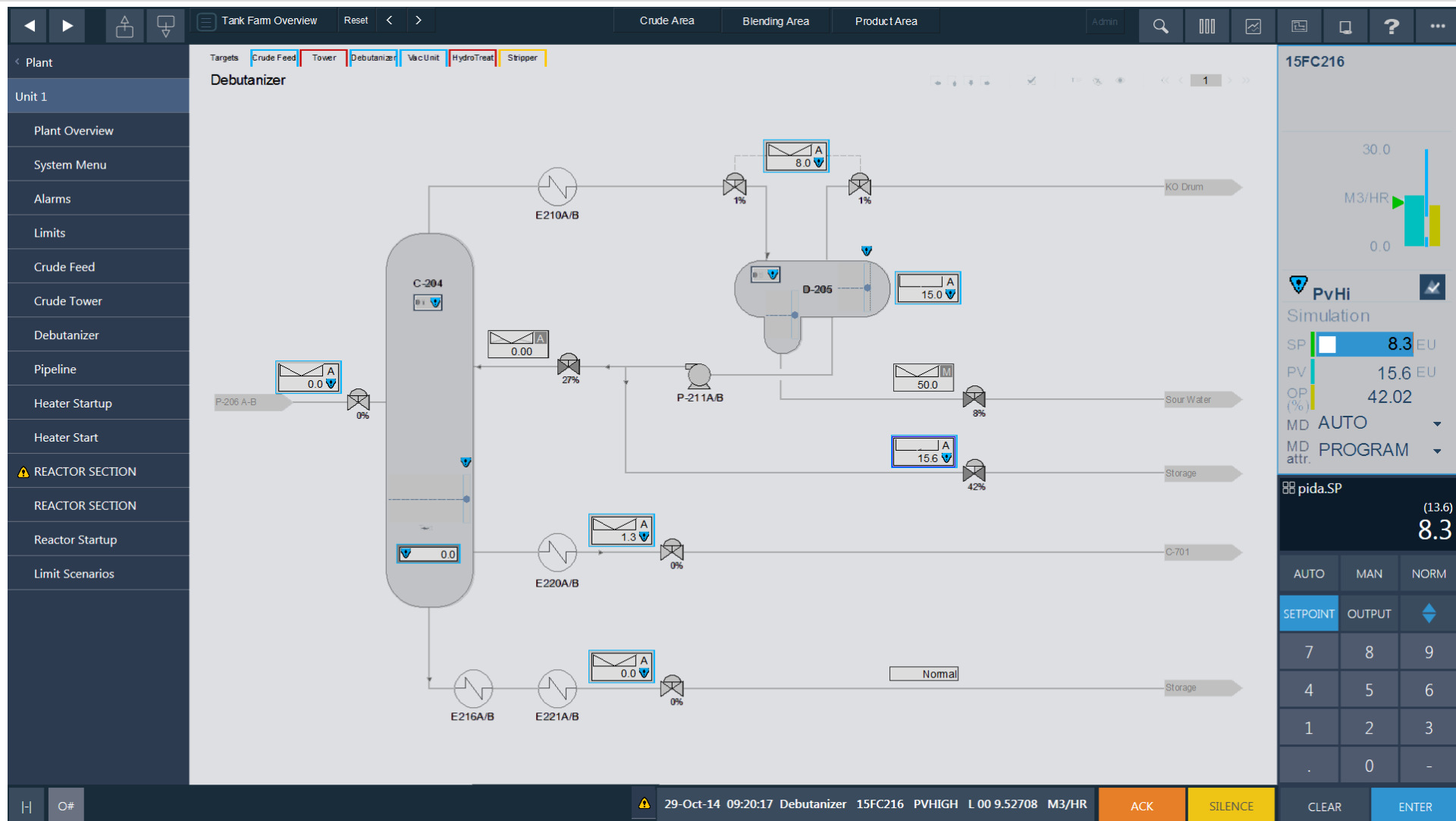
- Single continuous workspace using 55" ultra hi definition (4K) monitors
- Flexible layouts of displays as well as related applications and video optimizing the operators situational awareness
- Orchestration single action invokes set of process and application
- Integration with alarm management, advance control, operating limits operation monitoring application data

## Advanced Operator Touchpanel

- 24" multi-touch panel primary device for operator navigation and control
- Data entry, navigation, and monitoring
- Content can be customized
- Faster and more intuitive than mouse/keyboard



## Prototype Operator Touch Panel





# Sit-Stand Functionality



- Actuators raise/lower work surface, screens, keyboard, mouse
- Address Health Safety and Environment (HSE) concerns around long periods of sitting

# Ambient Alarm Light



- Ambient indicator aligned with audible annunciation
- Colours configurable default follow alarm colours
- Gradual transitions between states
- Redundant electronics

# Orion Console Three Operating Positions



- Modular design allows for the connection of base consoles
- Power and data cable connections between equipment tray and cable raceway
- Single work surface with sit stand operation

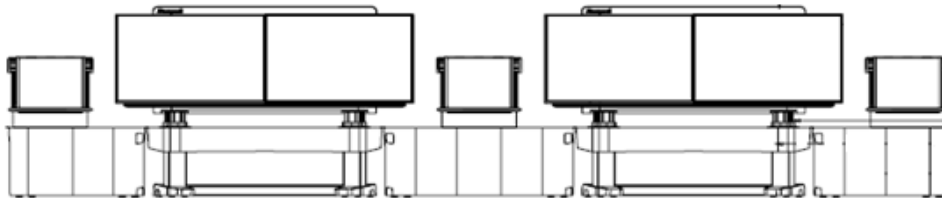
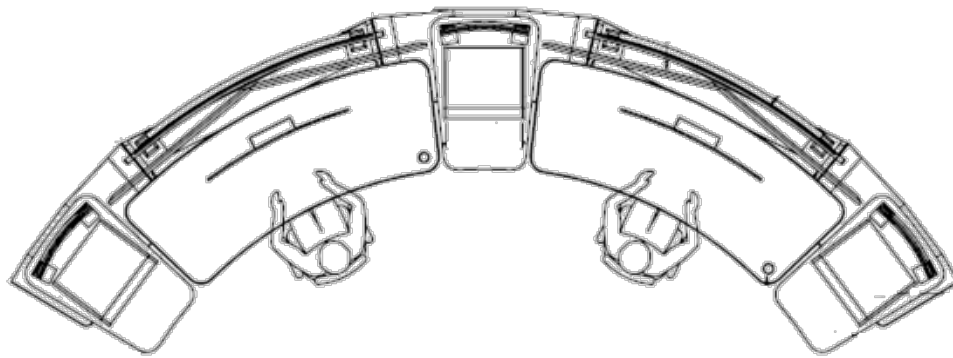
# Auxiliary Equipment Panel



- Panel mount equipment hardwired switches, communications
- Computers, network switches in panel below worksurface



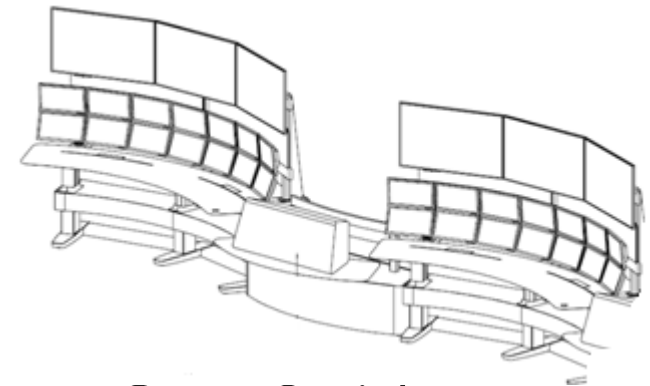
## Auxiliary Equipment Panel Options



Left

Center Curved

Right



Center Straight

## Lower Installation and Maintenance Costs

- Effective cable management
- Future proof designed to accommodate screen, keyboard and computer technology changes



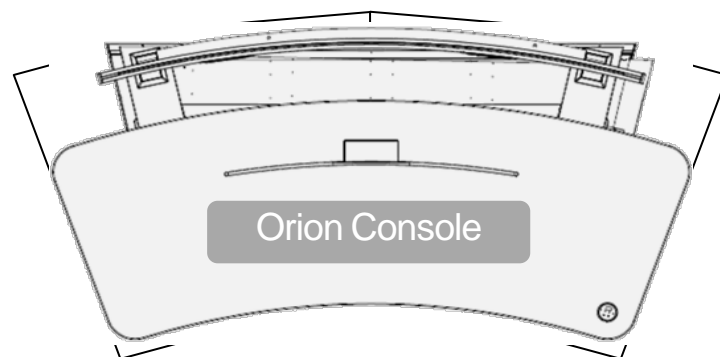
# Honeywell Single Supplier Packaged Solution

- Honeywell and EOM hardware and software fully tested - works out of the box
- Available long term to support future incremental console additions
- Lowest long term cost of ownership

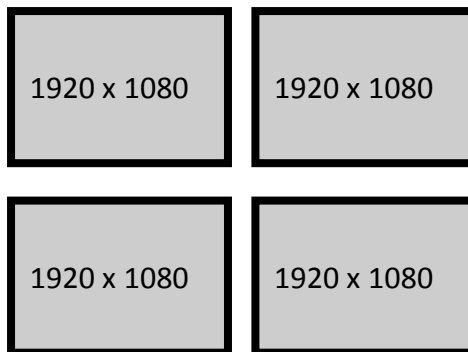


# Upgrade Legacy Consoles

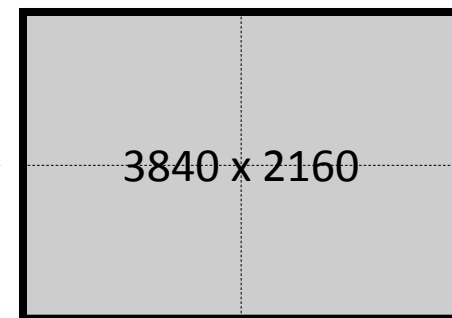
- Footprint matches older Honeywell consoles in place upgrade supported
- Two fully redundant operating positions
- Re-use of existing displays supported – SafeView change only for transition to Single Visual Workspace



4 x 24" Widescreen



1 x 50" Ultra High Definition Monitor







2014 Honeywell Users Group Europe, Middle East and Africa

## Experion Collaboration Station

## Experion Collaboration Station

### **Unleash your team's knowledge – wherever they are**

- Fewer people on site drive the need to address problems differently
- Increased specialization of expertise sees experts located anywhere on the plant and the world, not just in the control room
- Operate as a single entity instead of as a fragmented organization

**Changes the way organizations access plant information and solve problems**



# Honeywell's Integrated approach to Collaboration

## Experion PKS Collaboration Station

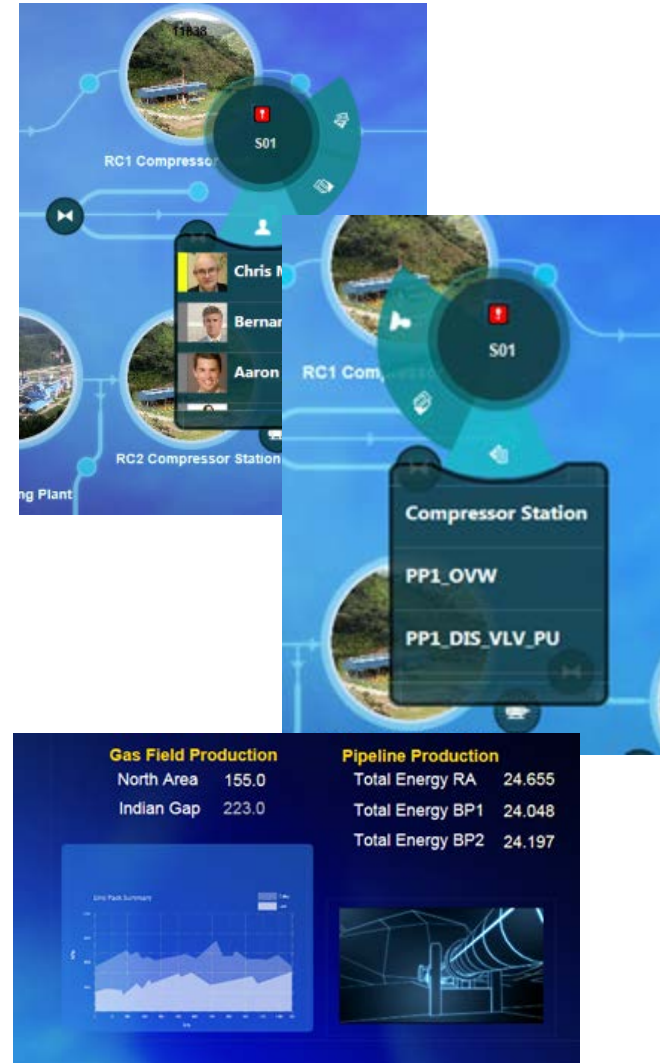
- Powerful tool that greatly expands visibility of enterprise information, applications and all Experion Orion content, with a common view for all those collaborating
- Fits any Control Room, Meeting Room and Central Location
- Quick to deploy, easy to use – Integral to Experion PKS Infrastructure

**Improving Production Costs by  
delivering information to management  
and staff in real time, to respond  
quicker to routine and emergency  
situations**



# Collaboration Station – a look inside

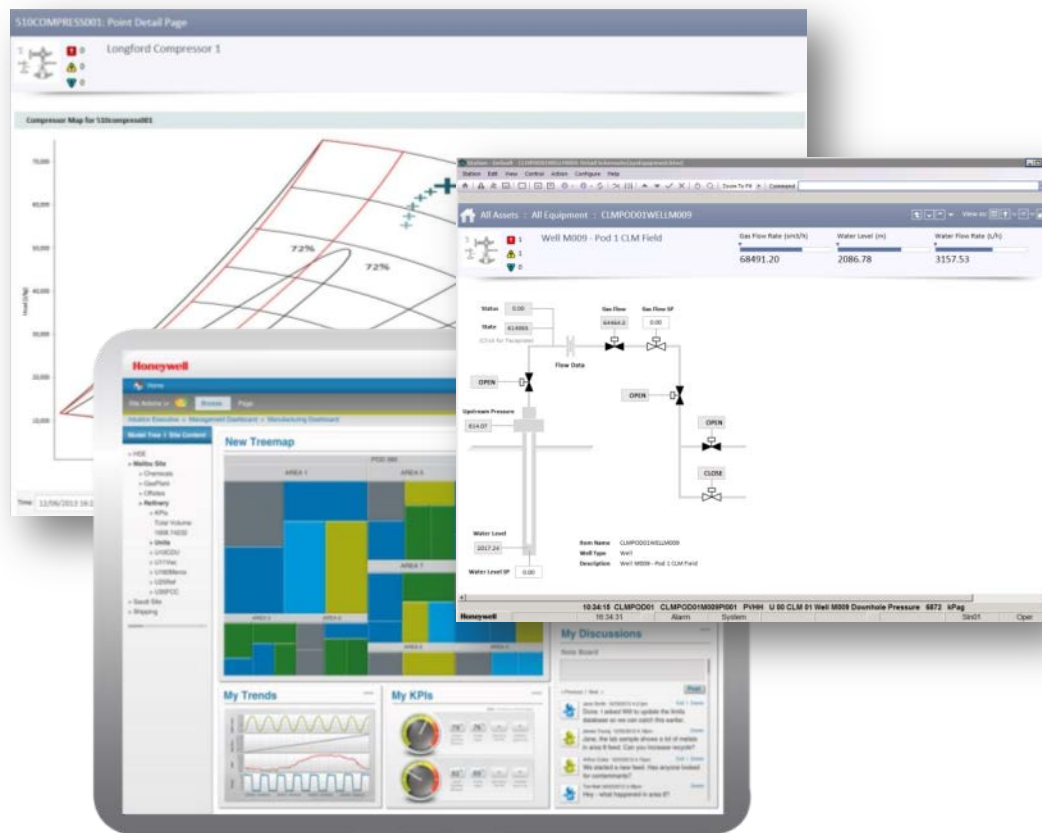
- **Customizable Large Workspace**
  - Easy to configure with the HMIWeb Display Builder
  - Html format, completely customizable
  - Includes alarm information
  - Support for integrated web objects
  - Easy to navigate using Touch, Pan and Zoom
- **Radial Menus – configure as you go**
  - Intuitive to use
  - Associates documents, links and people with locations on the workspace
  - Enables users to add new content on the fly
- **Enterprise communication**
  - Integrated with Lync for Instant communication





# Collaboration Station – what does it display

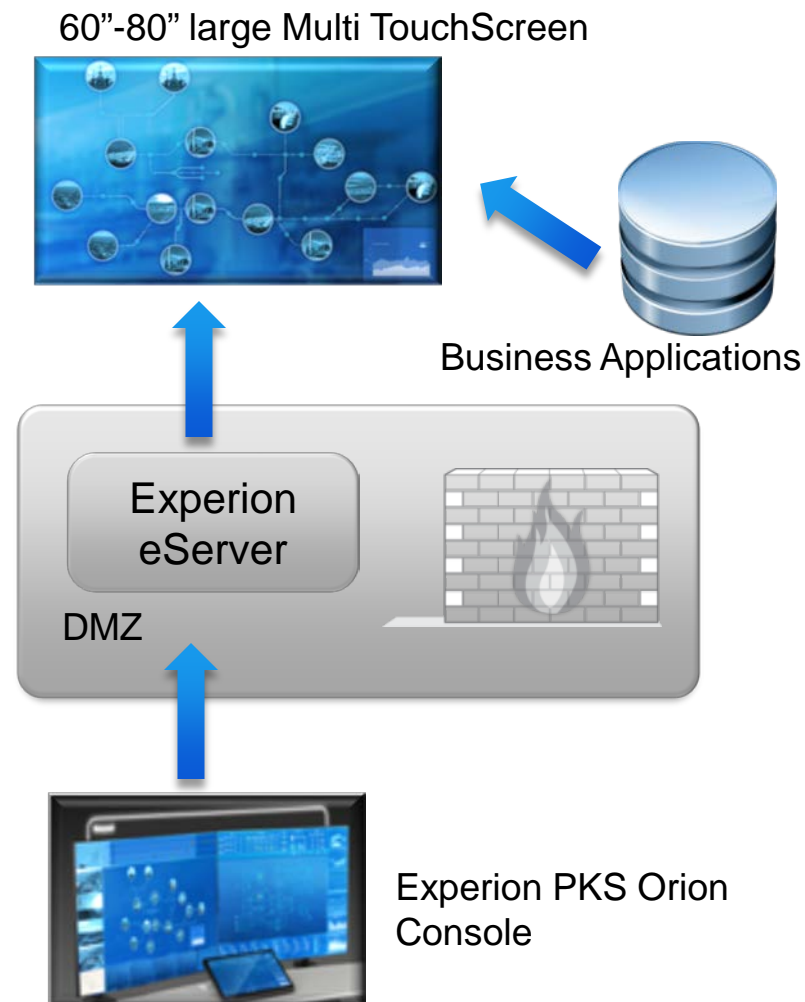
- Process automation displays
  - Live process data
  - Alarms
  - Engineering/Diagnostic Tools
  - Rich graphics and trends
  - Video (DVM)
- Business information
  - Intuition
  - Work Orders
  - Documentation
  - etc
- Enterprise communication
  - Audio, Video
  - Desktop sharing, Contacts



# Collaboration Station – how to apply

- Installation

- Collaboration Station is part of Experion & accesses HMIWeb displays via DSA
- Provides a secure common workspace at Level 4 for Experion & Business Network Information
- Shows the exact same graphics as the operator sees in the control room.
- Uniquely, Collaboration Station requires no editing of graphics or data conversion
- Supports Microsoft Lync for interaction with remote users
- Remote users may be desktops or other Collaboration Stations
- Easy to setup and maintain



## Collaboration Station – Users and Locations

### key locations:

1. Inside the control room
2. Outside control room, typically on or near the plant
3. Central Engineering

### Activities

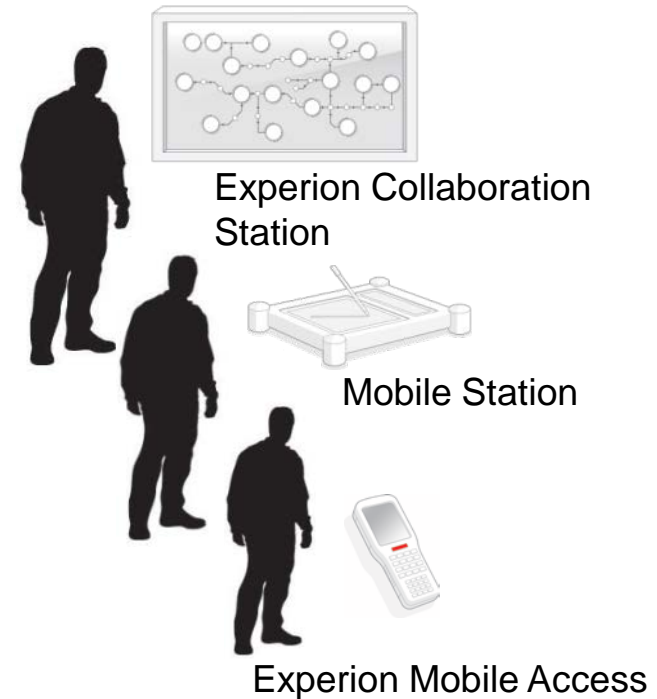
- Daily Plant Meeting
- Shift handover
- Response to Safety and Production Issues
- Troubleshooting
- Training
- Commissioning
- Remote Support



## Bringing it all together: Experion Solutions

### From Mobile to Large Screen Solutions:

- Seamless integration with Experion PKS Orion
- Integrated Security
- No learning curve in deployment – established Experion PKS Orion knowledge is sufficient
- Fast to deploy, easy to maintain: no duplication of databases or graphics
- Field expertise to execute & support
- Reduced risk and assured delivery of benefits



### Experion PKS **Orion**

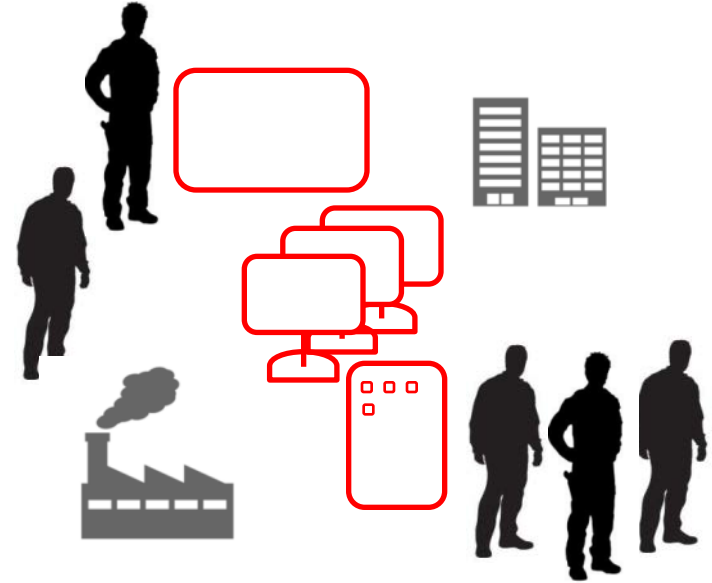
Seamless Wall, Tablet, Desktop and Mobile Solutions – Broadest Portfolio of Out of the Box Solutions



## Experion PKS Orion: HMI of the future

### Experion Collaboration Station and Experion Orion Console

Great Technology, even better in real-life!



**Come and see them  
both in the demo room!**

# Questions?

# Thank You!