

HN White Cornets & Trumpets

This guide contains photos from my collection, horn-u-copia, advertising and Robb Stewart, which detail the trumpets and cornets of the HN White Company.

Henderson White, a Romeo carpenter's son, started working in instrument repair with O.F. Berdan in Detroit before age 16, at which point he was recruited to Cleveland and ultimately was a repairman for H.E. McMillin's store. He started his own store selling the same products as McMillin in 1894 and expanded to making instruments before 1900. The first, a trombone, was patterned on input from Thomas King, who is the source of the King name (the lion head logo on serials before 9000 notwithstanding).

White expanded in 1897 into rented loft space and then in 1909 into a factory on Superior street that doubled in size by 1917. The company hired Foster Reynolds after his one year apprenticeship at York in late 1904.

White continued selling stencil products, which was all that McMillin ever sold, until at least 1915. The earliest show the same typeface and layout as early McMillin horns as well as being the same actual instruments. It is likely White was the person marking the bells of all of these pre-1900 examples.

The White family continued the firm after his death and ultimately sold to Nate Dolin in 1965.

HN White & King Serial Numbers

Year	Starting	Year	Starting	Year	Starting	Year	Starting
1893	1	1923	58,000	1953	330,000	1983	906,860
1894	250	1924	68,000	1954	337,000	1984	941,716
1895	500	1925	78,000	1955	340,000	1985	976,572
1896	750	1926	88,000	1956	346,000	1986	prefix 36-
1897	1,000	1927	98,000	1957	352,000	1987	prefix 37-
1898	1,300	1928	108,000	1958	358,000	1988	prefix 38-
1899	1,600	1929	116,000	1959	364,000	1989	prefix 39-
1900	2,000	1930	126,000	1960	370,000	1990	prefix 40-
1901	2,400	1931	136,000	1961	377,500	1991	prefix 41-
1902	2,800	1932	146,000	1962	384,500	1992	prefix 42-
1903	3,200	1933	156,000	1963	392,000	1993	prefix 43-
1904	3,600	1934	166,000	1964	399,000	1994	prefix 44-
1905	4,000	1935	176,000	1965	406,500	1995	prefix 45-
1906	4,800	1936	186,000	1966	416,720	1996	prefix 46-
1907	5,600	1937	200,000	1967	426,940	1997	prefix 47-
1908	6,400	1938	212,000	1968	437,160	1998	prefix 48-
1909	7,200	1939	225,000	1969	447,380	1999	prefix 49-
1910	8,000	1940	239,000	1970	457,600	2000	prefix 50-
1911	9,200	1941	254,000	1971	468,430	2001	prefix 51-
1912	10,400	1942	264,000	1972	479,260	2002	prefix 52-
1913	11,600	1943	264,000	1973	490,090	2003	prefix 53-
1914	12,800	1944	264,000	1974	500,920	2004	prefix 54-
1915	14,000	1945	267,500	1975	511,751	2005	prefix 55-
1916	16,000	1946	277,000	1976	579,596	2006	prefix 56-
1917	19,000	1947	287,000	1977	647,441	2007	prefix 57-
1918	23,000	1948	296,500	1978	715,286	2008	prefix 58-
1919	28,000	1949	301,500	1979	783,131	2009	prefix 59-
1920	34,000	1950	308,000	1980	850,976	2010	prefix 60-
1921	41,000	1951	316,500	1981	869,604	2011	prefix 61-
1922	49,000	1952	322,000	1982	888,232	2012	prefix 62-

Cleveland and American Standard			
(extrapolated from Chris Charvat's list)			
Year	Starting	Year	Starting
1919	1	1945	45,000
1920	910	1946	46,000
1921	1,819	1947	47,000
1922	2,728	1948	48,000
1923	3,637	1949	49,000
1924	4,546	1950	50,000
1925	5,455	1951	53,000
1926	6,364	1952	56,000
1927	7,273	1953	59,000
1928	8,182	1954	62,000
1929	9,091	1955	65,000
1930	10,000	1956	74,000
1931	14,000	1957	83,000
1932	18,000	1958	92,000
1933	22,000	1959	101,000
1934	26,000	1960	100,000
1935	30,000	1961	112,000
1936	32,000	1962	124,000
1937	34,000	1963	136,000
1938	36,000	1964	148,000
1939	38,000	1965	160,000
1940	40,000	1966	212,000
1941	41,000	1967	264,000
1942	42,000	1968	316,000
1943	43,000	1969	368,000
1944	44,000	1970	420,000



H.N. White's First Stencil

Years Built: 1894 – 189?

Key(s): A & B-flat

Pitching: HP & LP

Front Slide: HP/LP

Rear Slide: Tuning

Tuning Lock: MP Shank

Bore:

Bell Material: Yellow brass

Bell Type: 2-piece

Name(s): "SUPERIOR" – "M.BAUER" – "HN WHITE" – "SOLE AGENT" – "CLEVELAND O."

Special Characteristics: Built by Bohland & Fuchs, who built for Lyon & Healy's Henry Gunkel Paris brand, Sears Marceau Paris, Vega, Fischer, L&H, and McMillin as well. A Besson design.



Superior Silver Star Cornet

Years Built: 1895 – 190?

Key(s): A & B-flat

Pitching: HP & LP

Front Slide: None

Rear Slide: Tuning & HP/LP

Tuning Lock: MP Shank

Bore:

Bell Material: Yellow brass

Bell Type:

Name(s): "SUPERIOR" – "SILVER STAR" – "HN WHITE " – "SOLE AGENT" – "CLEVELAND O."

Special Characteristics: Built off-shore in the style of a Courtois.

{Photo from Kenton Scott's www.horn-u-copia.net}



Silver Star Cornet

Years Built: 1895 – 190?

Front Slide: None

Bore:

Name(s): “SILVER STAR” – “HN WHITE ” – “CLEVELAND O.”

Special Characteristics: Built off-shore by Bohland & Fuchs in the style of a Cortois Arban.

Key(s): A & B-flat

Rear Slide: Tuning & HP/LP

Bell Material: Yellow brass

Pitching: HP & LP

Tuning Lock: MP Shank

Bell Type:



Union Cornet

Years Built: 1895 – 190?

Key(s): A & B-flat

Pitching: HP & LP

Front Slide: None

Rear Slide: Tuning & HP/LP

Tuning Lock: MP Shank

Bore:

Bell Material: Yellow brass

Bell Type: 1-piece

Name(s): “UION” - “HN WHITE – “CLEVELAND O.”

Special Characteristics: Built off-shore by Bohland & Fuchs in Bohemia



Superior Silver Star Cornet

Years Built: 1900 – 190?

Key(s): A & B-flat

Pitching: HP & LP

Front Slide: A/B-flat

Rear Slide: Tuning & HP/LP

Tuning Lock:

Bore:

Bell Material: Yellow brass

Bell Type:

Name(s): "SILVER STAR" – "HN WHITE " – "SOLE AGENT" – "CLEVELAND O."

Special Characteristics: Built by Bohland & Fuchs in Bohemia



Imperial Cornet

Years Built: 1900 – 190?

Key(s): A & B-flat

Pitching: HP & LP

Front Slide: A/B-flat

Rear Slide: Tuning & HP/LP

Tuning Lock:

Bore:

Bell Material: Yellow brass

Bell Type:

Name(s): “Imperial” – “*Made in Austria*” - “HN WHITE “ – “SOLE AGENT” – “CLEVELAND O.”

Special Characteristics: Built by Bohland & Fuchs in Bohemia. This same model also appeared with the false attribution to M. Bauer as the H.N. White stencil.

{Resale Advertising Image}



The King Cornet

Years Built: ca. 1895

Key(s): A & B-flat

Pitching: HP & LP?

Front Slide: A/B-flat

Rear Slide: Tuning (&HP/LP?) **Tuning Lock:**

Bore:

Bell Material: Yellow brass **Bell Type:**

Special Characteristics: Among the earliest instruments built by HN White. It is not fully evolved to a long model, but is longer in wrap, and much larger in bore and general physical size than an 1890s cornet. As confirmed by a sibling horn in the Meacham collection, these evolved with each rather than being a set model. The genesis of American long cornets.



King “Famous” Short Cornet

Years Built: 1901 – 1914

Key(s): A & B-flat

Pitching: HP & LP

Front Slide: A/B-flat

Rear Slide: Tuning & HP/LP

Tuning Lock: Stop rod

Bore: Medium

Bell Material: Yellow brass

Bell Type:

Name(s): King Cornet, Famous King Cornet, King Short Model

Special Characteristics: Built with full sets of high & low pitch slides



King Vocal Cornet

Years Built: 1901 – 1911/2

Front Slide: A/B-flat

Bore: Medium

Name(s): King C Cornet, King Vocal Cornet, King Combination Cornet

Special Characteristics: C adapter replaced tuning slide

Key(s): A, B-flat & C

Rear Slide: Tuning & HP/LP

Bell Material: Yellow brass

Pitching: HP & LP

Tuning Lock: Stop rod

Bell Type:



King Long Model Cornet

Years Built: 1901 – 1911/2	Key(s): A & B-flat	Pitching: HP & LP
Front Slide: A/B-flat	Rear Slide: Tuning & HP/LP	Tuning Lock: Stop rod
Bore: Small	Bell Material: Yellow brass	Bell Type:
Name(s): King Long Cornet, King Small Bore Cornet		

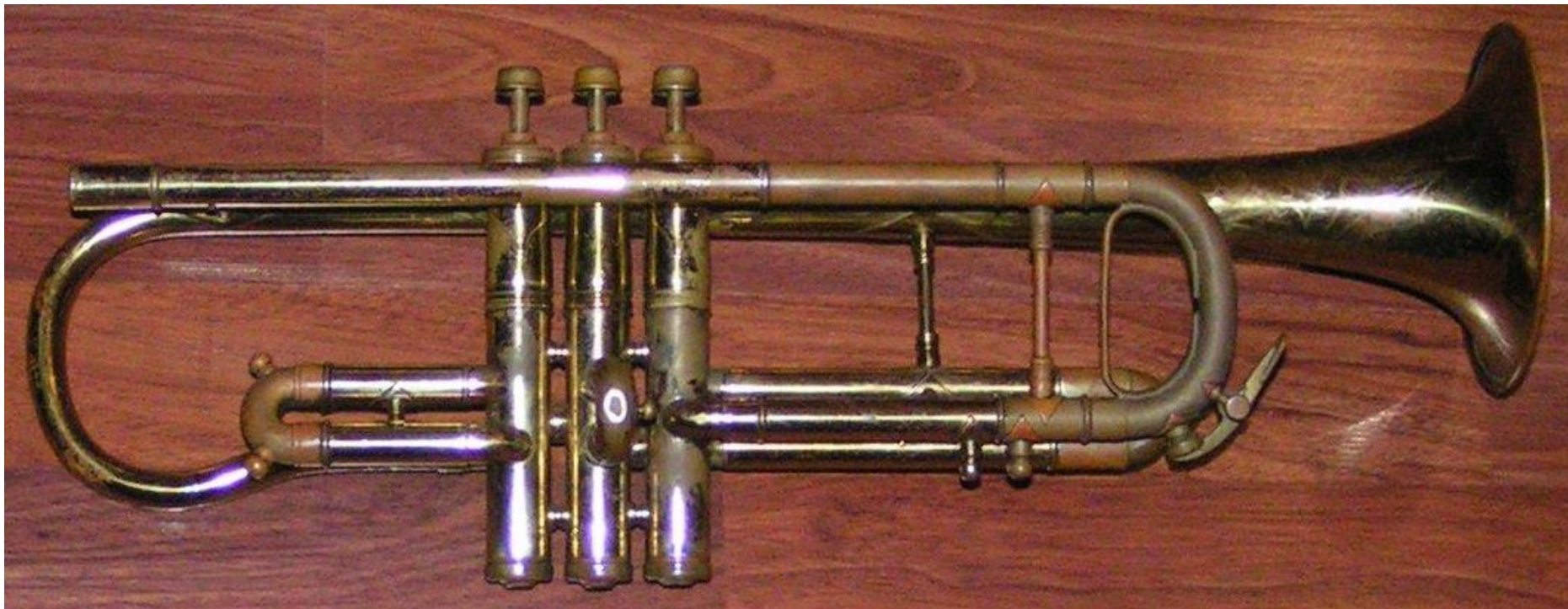
Special Characteristics: Built with full sets of high & low pitch slides.

Serial #14988 appeared for sale on Ebay suggesting this model in production as late as 1915 if not a case of cobbling



King Large Bore Model Cornet

Years Built: 1901 – 1911/2	Key(s): A & B-flat	Pitching: HP & LP
Front Slide: A/B-flat	Rear Slide: Tuning & HP/LP	Tuning Lock: Stop rod
Bore: Medium	Bell Material: Yellow brass	Bell Type:
Name(s): King Short Cornet in Large Bore, Large Bore Cornet, Large Bore Model		
Special Characteristics: Built with full sets of high & low pitch slides		



King Small Bore Trumpet

Years Built: 19?? - 1911

Key(s): A & B-flat

Pitching: HP & LP

Front Slide: A/Bb & HP/LP

Receiver: Tuning

Tuning Lock: Stop rod

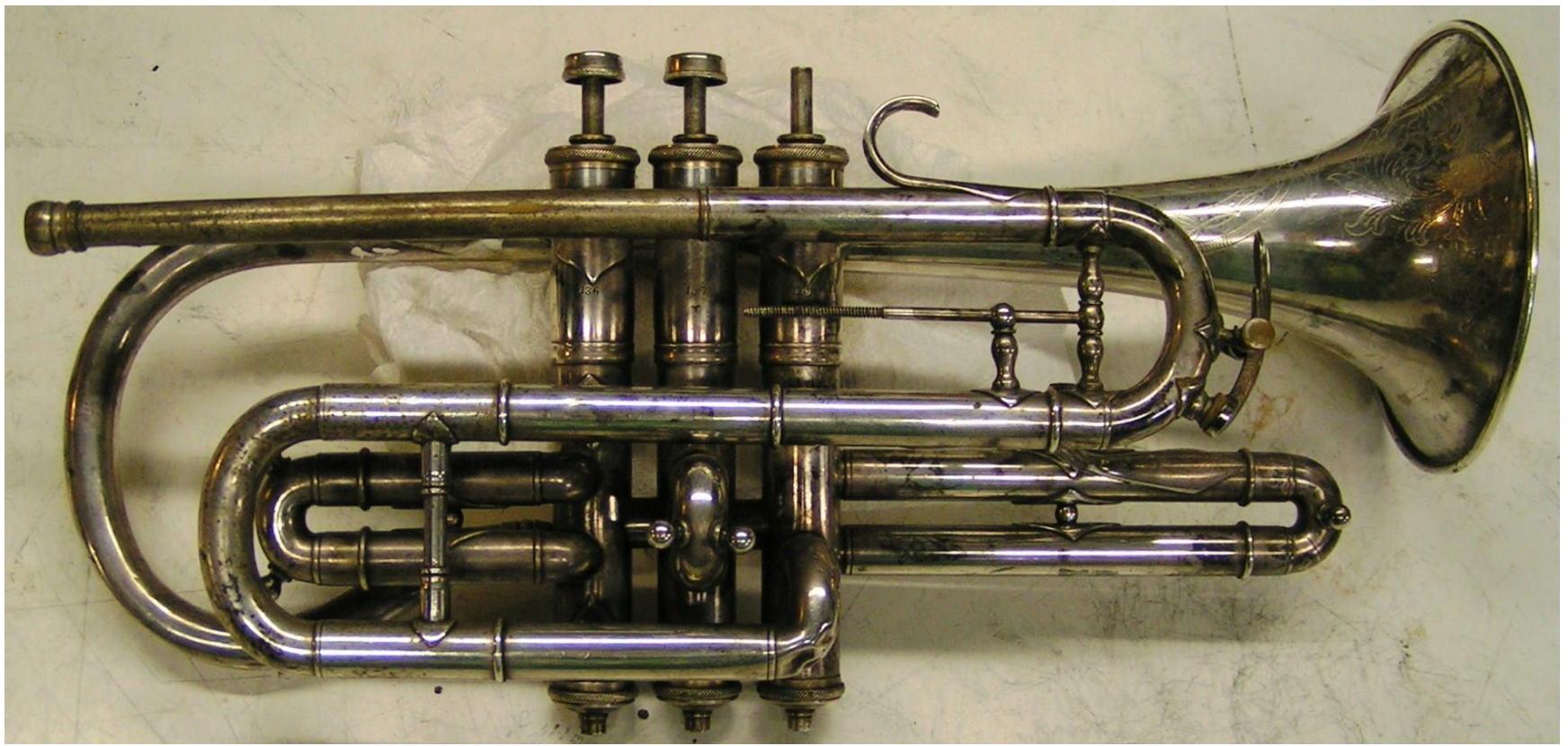
Bore: Small

Bell Material: Yellow brass

Bell Type: 2-piece

Name(s): “

Special Characteristics: Built with a crook in the bell and reversed construction A/Bb quick change slide. Both high and low pitch slides were provided. Low pitch (shown) was lengthened by the addition of the brace and two short lengths as a parts kit during manufacture.



Imperial Stencil Cornet

Years Built: >1906 – 1915?? **Key(s):** A & B-flat **Pitching:** HP & LP
Front Slide: A / B-flat **Rear Slide:** Tuning & HP/LP **Tuning Lock:** Stop rod
Bore: **Bell Material:** Yellow brass **Bell Type:**

Name(s): “IMPERIAL” – “HN WHITE” – “SOLE AGENT” – “CLEVELAND” – “OHIO”

Special Characteristics: Built by Bohland & Fuchs in Bohemia and loosely patterned on the Conn Perfected Wonder. Bell is rumored to be Sterling, but does not look it.



King Improved Model Long Cornet

Years Built: 1910(?) – 1916

Key(s): A & B-flat

Pitching: HP & LP

Front Slide: A/B-flat

Rear Slide: Tuning & HP/LP

Tuning Lock: Stop rod

Bore: Small or Large

Bell Material: Yellow brass

Bell Type:

Name(s): King Long Cornet, King Improved Model

Special Characteristics: Built with full sets of high & low pitch slides. (1912 Small bore shown)



King Improved Model Trumpet

Years Built: 1910(?) – 1915

Key(s): A & B-flat

Pitching: HP & LP

Front Slide: Tuning & A/Bb

Adj. Shank: Tuning

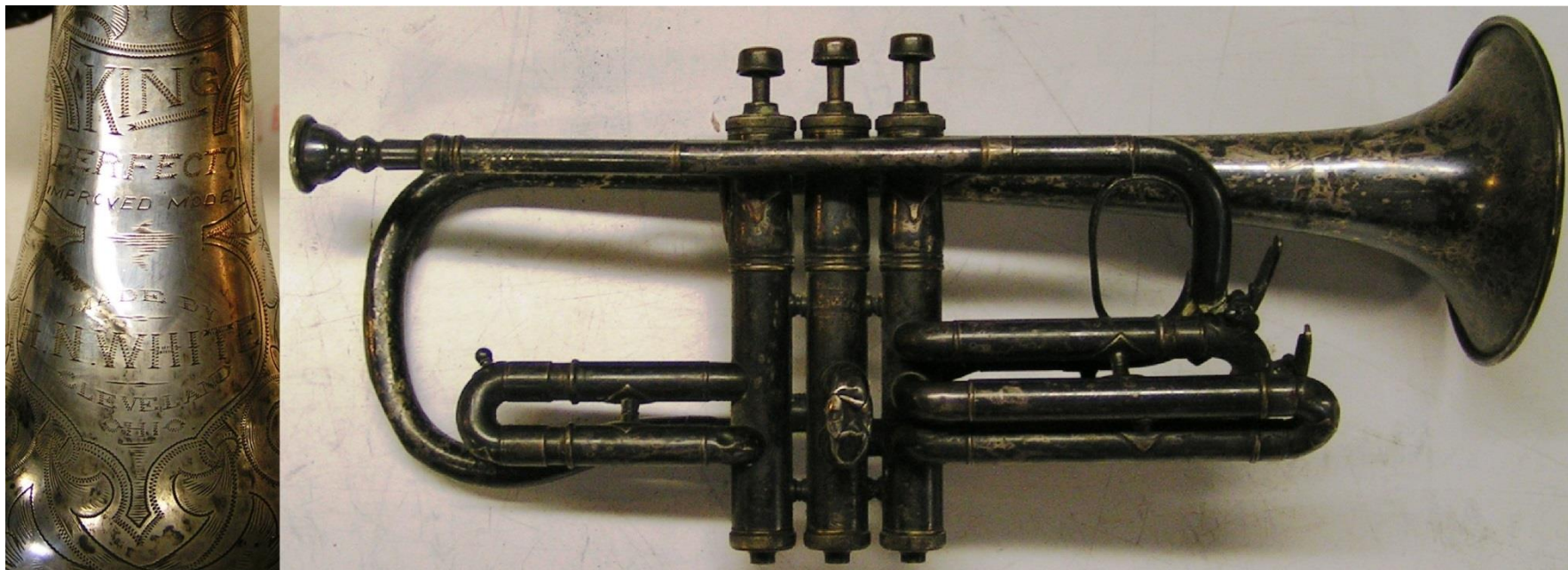
Tuning Lock: Stop rod

Bore: Small - Large

Bell Material: Yellow brass

Bell Type: 2-piece

Special Characteristics: Functionally unchanged from the original model. Small bore with LP slides shown, Robb Stewart photo of large bore in HP inset below along with tuning detail.



King Perfecto Improved Model Cornet (#1)

Years Built: 1910 - 1914

Key(s): A & B-flat

Pitching: HP & LP

Upper Slide: HP/LP & Tuning

Lower Slide: A/B-flat

Tuning Lock: Stop rod

Bore:

Bell Material: Yellow brass

Bell Type:

Name(s): Perfecto, Perfecto #1, King New Proportion Model (ie: Holton NPC)

Special Characteristics: Similar to the 1906 Holton New Proportion Long/Couturier Model. Tuning slide is half-reversed.



King Special Cornet

Years Built: 1912(?)-1916(?)

Front Slide: Tuning , HP/LP

Bore: Large

Name(s): King Special

Key(s): A & B-flat

Rear Slide: A/B-flat

Bell Material: Yellow brass

Pitching: HP/LP

Tuning Lock: Stop rod

Bell Type:

Special Characteristics: A Perfected Wonder style horn similar to the later Imperial built by white/King Junior/Cleveland 601. Robb Stewart Reconstruction (upper left) based on witness marks and concurrent King model designs. A later discovery of another horn with a broken patched leadpipe (lower right) revealed an “Improved Model” leadpipe design – the engineering deficiencies of which help explain why none survived intact.



King Improved Model Vocal/Combination Cornet

Years Built: 1912(?) – <1916 **Key(s):** A, B-flat & C

Pitching: HP & LP

Front Slide: HP/LP & Tuning **Rear Slide:** Bb / A

Tuning Lock: Rotary & Slide

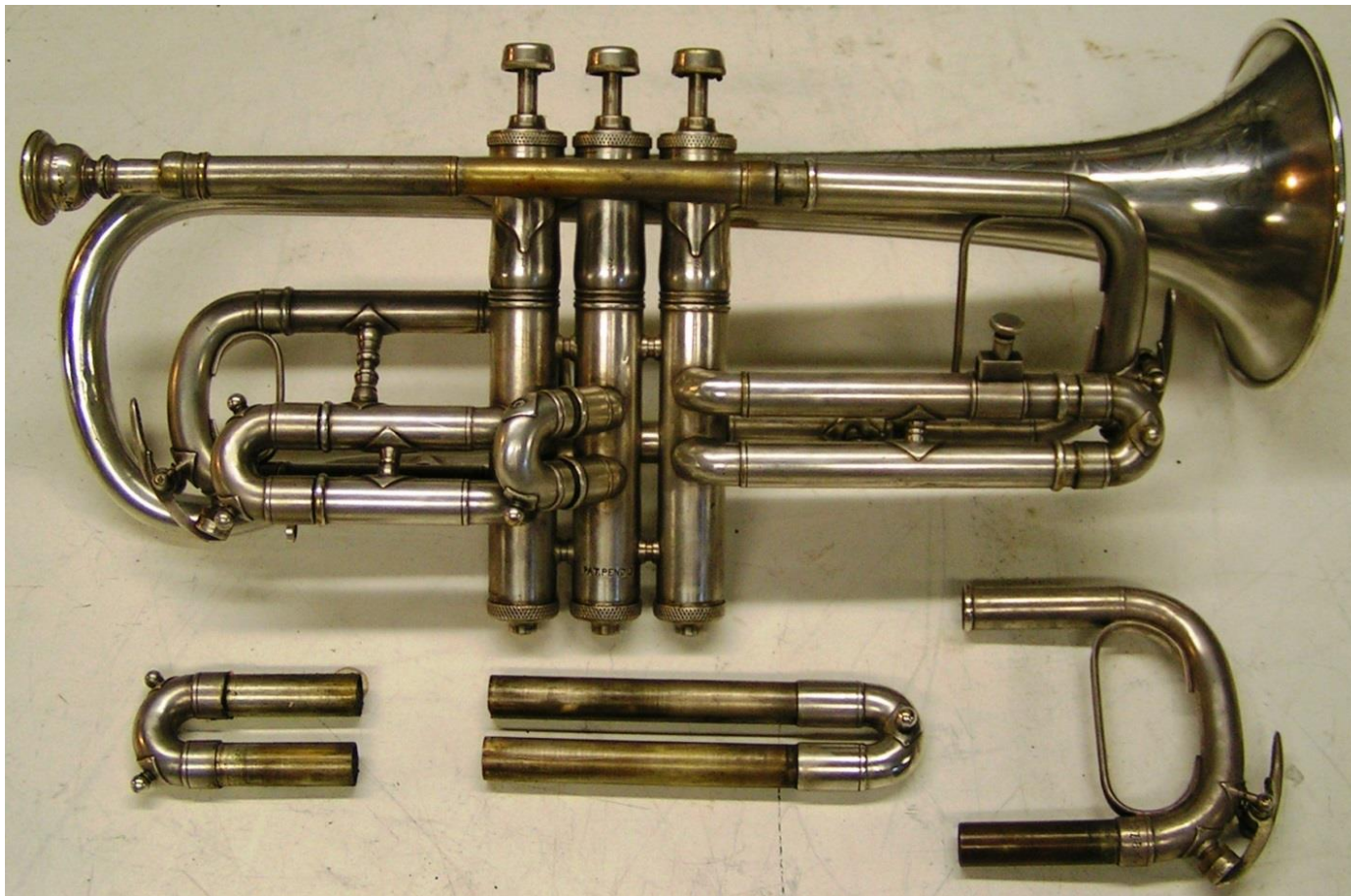
Bore: Medium

Bell Material: Yellow brass

Bell Type:

Name(s): Vocal Cornet, C Cornet, King Solo C Cornet, Combination Model, Improved Model

Special Characteristics: Rotary valve selects between C and Bb. In Bb, the lower slide extends to pitch n A. Is the same as the later Combination/Vocal Model built by 1918 except that it includes the HP/LP slide at the end of a short leadpipe while the later model extended the leadpipe down to the rotary valve saving material and labor. (LP slide shown)



King Improved Perfecto Cornet (#2)

Years Built: 1914 - 1921

Key(s): A & B-flat

Pitching: HP & LP

Front Slide: Tuning

Rear Slide: A/B-flat

Tuning Lock: Stop rod

Bore:

Bell Material: Yellow brass

Bell Type:

Name(s): Perfecto #2

Special Characteristics: Improved balance from the nose-heavy NPC design of the Perfecto #1



King Master Model Cornet

Years Built: 1915 - 1934

Key(s): A & B-flat

Pitching: HP & LP (at first)

Front Slide: None

Rear Slide: Tuning & Key

Tuning Lock: Slide retainer

Bore: Medium or Large

Bell Material: Yellow brass*

Bell Type:

Name(s): Master Model, Master Model #1

Special Characteristics: Catch points on the tuning slide trapped against a retaining clamp on the outside. White patented this design. *Available w/sterling bell after 1925.



Master Model Trumpet

Years Built: 1915/6 - 1919

Key(s): A & B-flat

Pitching: LP

Front Slide: Tuning, A/Bb

Rear Slide: None

Tuning Lock: Retaining ring

Bore: Small or Medium

Bell Material: Yellow brass

Bell Type:

Name(s): Master Model, King Trumpet

Special Characteristics: Unbraced tuning slide. Main brace is arc from 3rd to bell. Bell inside rose-gold plated.



Master Vocal Trumpet

Years Built: 1915/6 - 1941	Key(s): A, B-flat & C	Pitching: LP
Front Slide: Tuning, A/Bb/C	Rear Slide: None	Tuning Lock: Rotary select
Bore:	Bell Material: Yellow brass	Bell Type:
Name(s): Master Model C Trumpet, King C Trumpet, King Vocal		

Special Characteristics: A cornet adapter shank is stuck in the receiver of the 1937 example shown above. These horns came with two sets of valve slides for either C or Bb.



Imperial Self-stenciled Cornet

Years Built: 1915(?)-1920

Key(s): A & B-flat

Pitching: LP

Front Slide: Tuning

Rear Slide: A/B-flat

Tuning Lock: Retaining ring

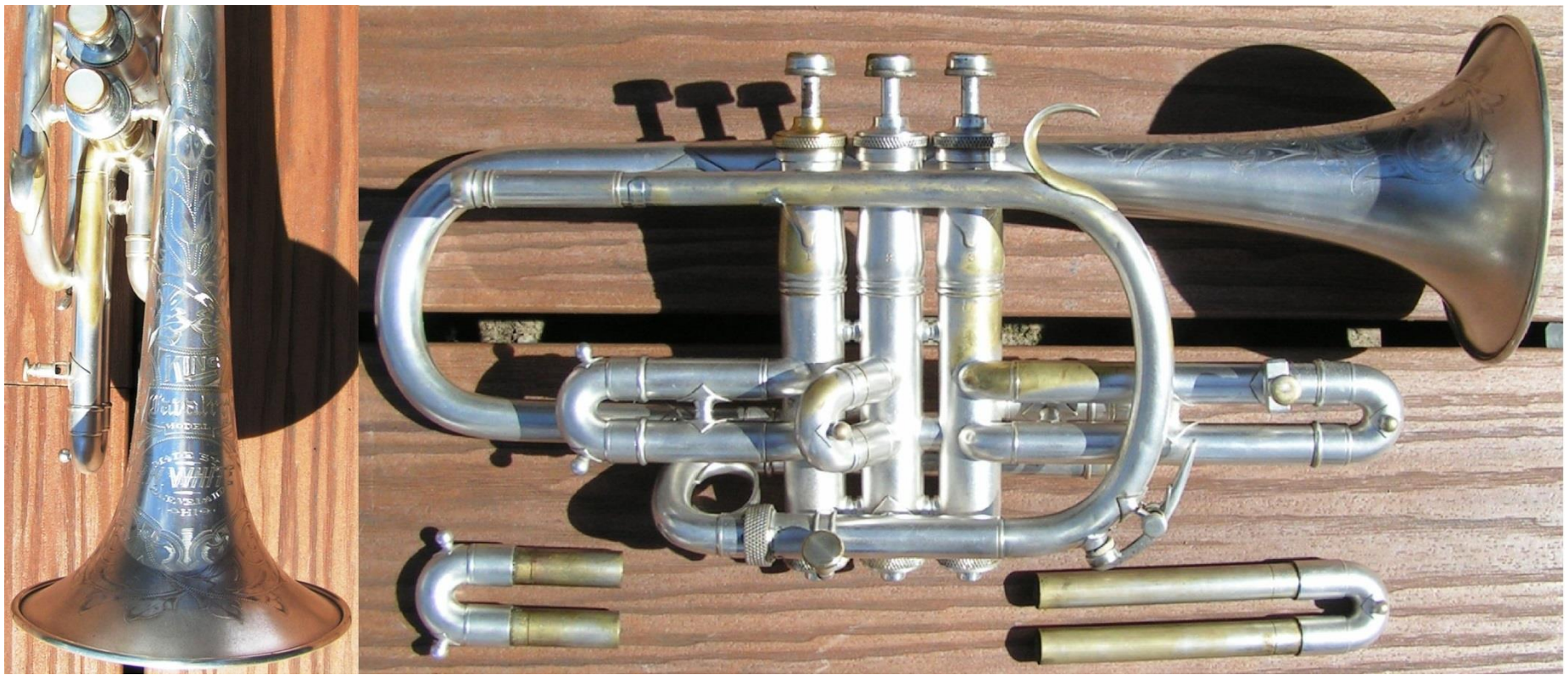
Bore:

Bell Material: Yellow brass

Bell Type:

Name(s): "IMPERIAL" – "HN WHITE" – "SOLE AGENT" – "CLEVELAND" – "OHIO"

Special Characteristics: Built by H.N. White and loosely patterned on the Conn Perfected Wonder. Stripped of detail to lower cost. Was also sold to McMillin to stencil as a Crown.



King Cavalry Cornet

Years Built: 1916 - 1919

Key(s): A & B-flat

Pitching: HP & LP

Front Slide: None

Rear Slide: Tuning & Key

Tuning Lock: Slide retainer

Bore: Medium or Large

Bell Material: Yellow brass

Bell Type:

Name(s):

Special Characteristics: A simplified version of the Master made for potential military sales.



King Combination or Vocal C Cornet

Years Built: by 1916 – 1941 **Key(s):** A, B-flat & C

Pitching: HP & LP

Front Slide: key of A & Tuning **Rear Slide:** Key & HP/LP

Tuning Lock: Rotary & Slide

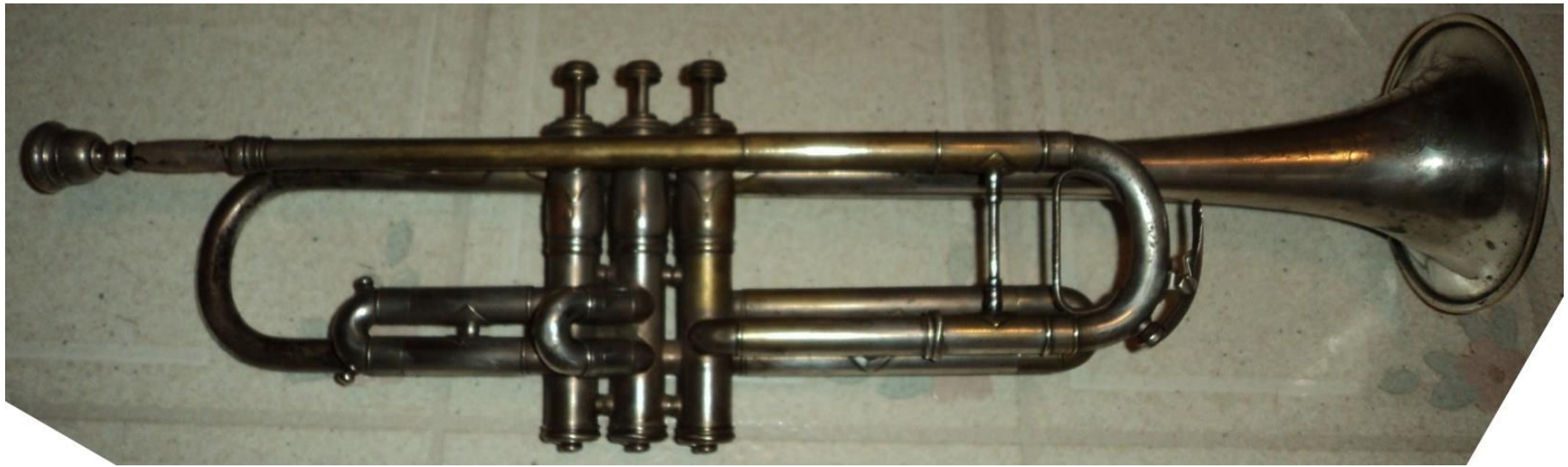
Bore: Medium

Bell Material: Yellow brass

Bell Type:

Name(s): Vocal Cornet, C Cornet, King Solo C Cornet, Master C Vocal, Master C Combination

Special Characteristics: Rotary valve selects between C and Bb. The lower slide extends for A. Valve slides for HP&LP. Wrap is based on the Perfecto. Built as Shepherd's crook pre-WWI.

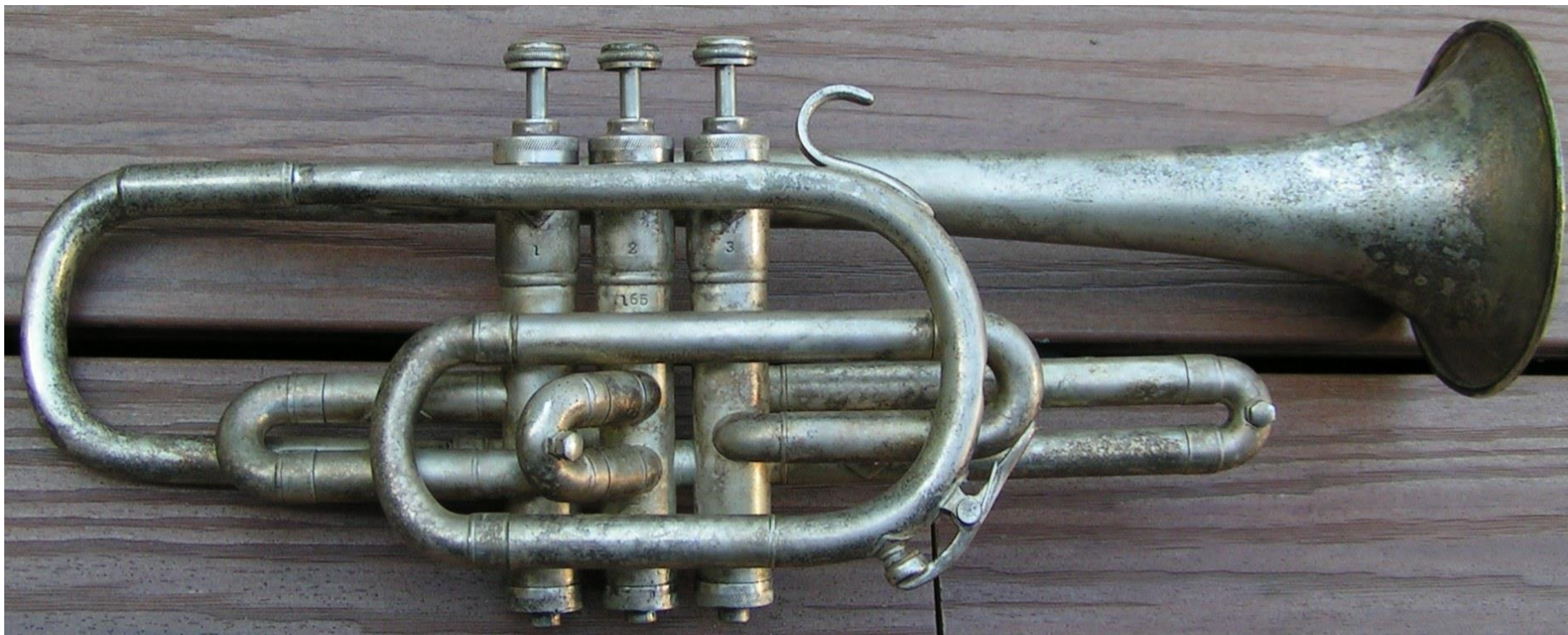


Cleveland Trumpet

Years Built: 1919-1925 (Independent).

Cleveland musical instruments was founded by Cleveland music store owner and trumpet maker Jas. Sisteck together with Frank Hruby, Fred Hruby, James Shelle, and Kinsel Pierce with an initial capitalization of \$25,000.00. First a professional line, Cleveland was bought by H.N White in 1925. It remained a separate entity until the Great Depression forced closure of the shop and the assignment of the Cleveland and its subsidiary American Standard names to stencil product from the same supplier as built the Student Prince. By the late 1930s, production was brought in house to utilize spare capacity resulting from the reduction in King sales. At that time, both names became student lines, building on the market tapped when they were moved to low-cost stencils.

Above is a 1925 Cleveland trumpet, designed and built entirely by the Cleveland Company.



Cleveland - American Standard Cornet

Years Built: 1919-1925

Key(s): B-flat

Pitching: LP

Front Slide:

Rear Slide: Tuning

Tuning Lock:

Bore:

Bell Material: Yellow brass

Bell Type:

Name(s): .

Special Characteristics: Built by an independent Cleveland company before the acquisition by HN White.



American Standard Model 200 Trumpet

Years Built: 1919-1925 (CMI), 1925-1962 (possible 30s stencil), 1963-1965 (Tempo)

American Standard was a subsidiary line of Cleveland Musical Instrument Co., which was bought by H.N White in 1925. It remained a separate entity until the Great Depression forced closure of the shop and the assignment of the Cleveland and American Standard names to stencil product from the same supplier as built the Student Prince. By the late 1930s, production was brought in house to utilize spare capacity resulting from the reduction in King sales. At that time, both names became student lines, building on the market tapped when they were moved to low-cost stencils. American Standard was rebranded as Tempo in 1963.



American Standard Model 205 Cornet

Years Built: 1925 – 1962, 1963-1965 (Tempo)

Key(s): B-flat

Pitching: LP

Front Slide:

Rear Slide: Tuning

Tuning Lock:

Bore:

Bell Material: Yellow brass

Bell Type:

Name(s): .

Special Characteristics: (1948 shown has sustained some lead-pipe bending – probably from a stuck mouthpiece) This is built after the purchase of Cleveland by White.



King Junior Cornet

Years Built: 1920 – 1938

Front Slide: Tuning

Bore:

Name(s): Bell read only “King”, the Junior name appeared only in catalogs.

Special Characteristics: Essentially identical to the Imperial. Built 1920-24 with rope trimmed Crown brand ferrules for sale to McMillin and then King ferrules as above 1925-38

Key(s): A & B-flat

Rear Slide: A/B-flat

Bell Material: Yellow brass

Pitching: LP

Tuning Lock: Retaining ring

Bell Type:



King Liberty Trumpet

Years Built: 1920 - 1932

Front Slide: Tuning

Bore: .438 or .448

Name(s): King Liberty, King Trumpet, Liberty #1

Special Characteristics:

Key(s): A & B-flat

Rear Slide: A/B-flat

Bell Material: Yellow brass*

Pitching: LP

Tuning Lock: Retaining ring

Bell Type: 2-piece

*Sterling Silver Silvertone model avail.



1928 above (Photo by Dr. Michael June)



1936 at right

Cleveland Model 603 Superior Trumpet

Years Built: ca.1924-1936

Key(s): A & B-flat

Pitching: LP

Front Slide: Tuning

Rear Slide: A/B-flat

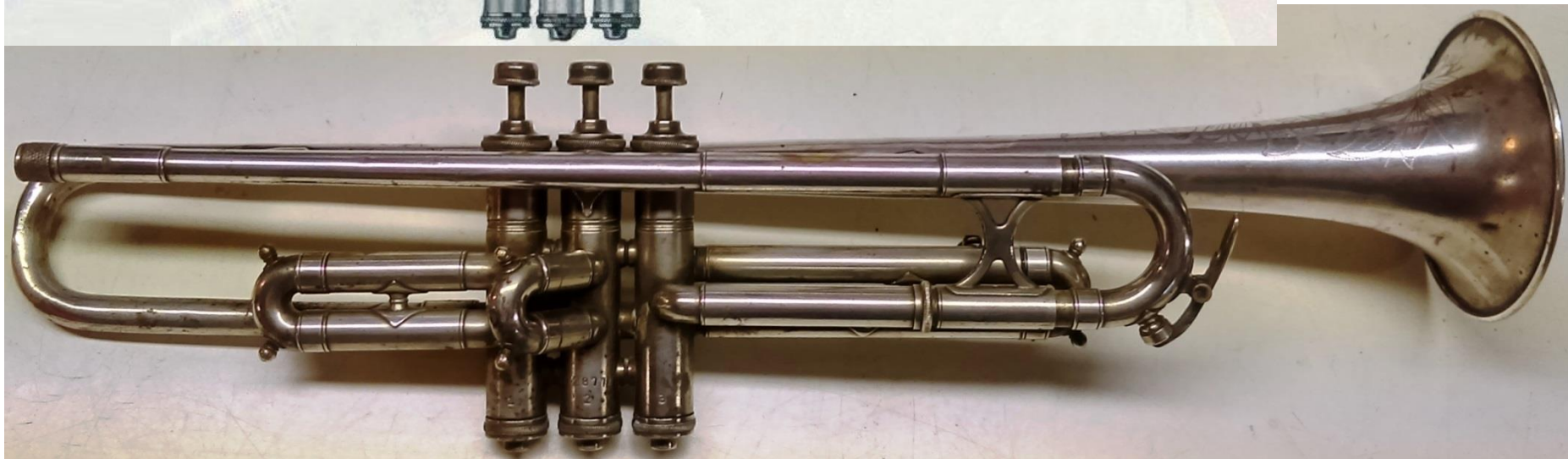
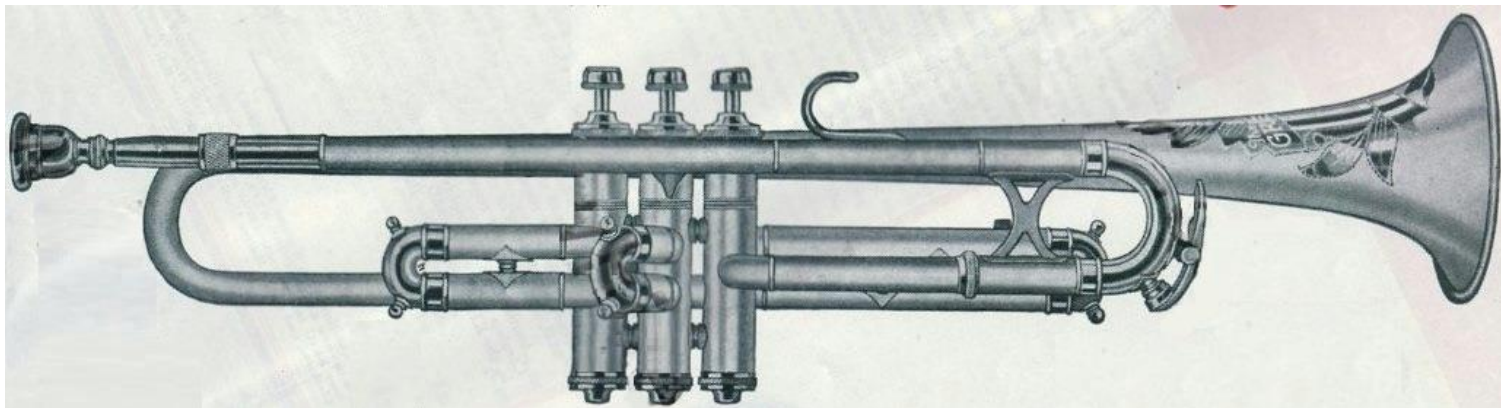
Tuning Lock: Retaining ring

Bore:

Bell Material: Yellow brass

Bell Type: 2-piece

Special Characteristics: Similar to the Cleveland Trumpet it replaced, but the first valve slide ports are offset and it uses a typical separate receiver. The late production example above has a Besson-style second valve slide and the 1930s Cleveland receiver trim. Earlier examples have traditional beaded receivers and back-swept slides. A 1924 example with a serial from the original Cleveland series and a perpendicular slide exists, as does a 1927 with backswept slide, but a serial number from the King series.



Cleveland Greyhound Model 600 Trumpet

Years Built: 1930 – 1936?

Key(s): A & B-flat

Pitching: LP

Front Slide: Tuning

Rear Slide: A/B-flat

Tuning Lock: Retaining ring

Bore:

Bell Material: Yellow brass*

Bell Type: 2-piece

Name(s):

Special Characteristics: Pea-shooter offering similar to the American Standard Student Prince. May have been stenciled during the depression, but that is not clear.



American Standard Student Prince Stencil Trumpet

Years Built: apx.1925->1939 **Key(s):** A & B-flat

Pitching: LP

Front Slide: Tuning, A/Bb

Rear Slide:

Tuning Lock: Stop rod

Bore:

Bell Material: Yellow brass

Bell Type: 2-piece

Name(s):

Special Characteristics: A stencil pea-shooter sold alongside the Cleveland Greyhound pea-shooter. The example above is a 1924.



King Commander Cornet

Years Built: 1928 - 1936

Front Slide: None

Bore: Medium or Large

Special Characteristics: Built as B-flat or as quick-change B-flat and A with a rotary selector.

Key(s): A & B-flat, Bb only

Rear Slide: Tuning

Bell Material: Yellow brass

Pitching: LP

Tuning Lock: Rotary select (option)

Bell Type:

{Bb only inset picture from Robb Stewart}



Cleveland Euclid Model #601 Cornet

Years Built: <1929 - 1941

Key(s): A & B-flat

Pitching: LP

Front Slide: Tuning

Rear Slide: A/B-flat

Tuning Lock: Retaining ring

Bore:

Bell Material: Yellow brass

Bell Type: 2-piece

Name(s): Cleveland cornet, Cleveland 601

Special Characteristics: Essentially identical to the Imperial, trim matches the later Juniors. It appears that the King Junior became the Cleveland 601 by 1929, or perhaps was both.



American Standard Stencil Cornet

Years Built: apx. 1930-1936?

Front Slide:

Bore:

Name(s): .

Special Characteristics:

Key(s): B-flat

Rear Slide: Tuning

Bell Material: Yellow brass

Pitching: LP

Tuning Lock:

Bell Type: 2-piece



King New Professional Long Model Cornet

Years Built: 1931 - 1941

Key(s): B-flat

Pitching: LP

Front Slide: Tuning

Rear Slide: None

Tuning Lock: None

Bore: Medium

Bell Material: Yellow brass

Bell Type: 2-piece

Name(s): New Professional, Long Model, Long Model #2, King Professional Cornet

Special Characteristics: Catalog images have an extra ferrule at the base of tuning (mistake). The New Professional was also available with a sterling silver Silvertone bell.



Early Model
with optional
Silvertone
sterling bell

Late Model with
optional rimless
brass bell



King Liberty No. 2 Trumpet

Years Built: 1933 - 1965

Key(s): A & B-flat

Pitching: LP

Front Slide: Tuning

Rear Slide: A/B-flat

Tuning Lock: Retaining ring

Bore: .438 or .448

Bell Material: Yellow brass*

Bell Type: 2-piece

Name(s): King Liberty, King Trumpet, King Silvertone

Special Characteristics: 2nd Valve slide is forward-leaning in early catalog images. Bottom-sprung valves. * Rimless brass and Sterling Silver Silvertone/Silversonic models available. (shown)



King Master Model No. 2 Cornet

Years Built: 1934 - 1965

Key(s): A & B-flat

Pitching: LP

Front Slide: None

Rear Slide: Tuning & Key

Tuning Lock: Slide retainer

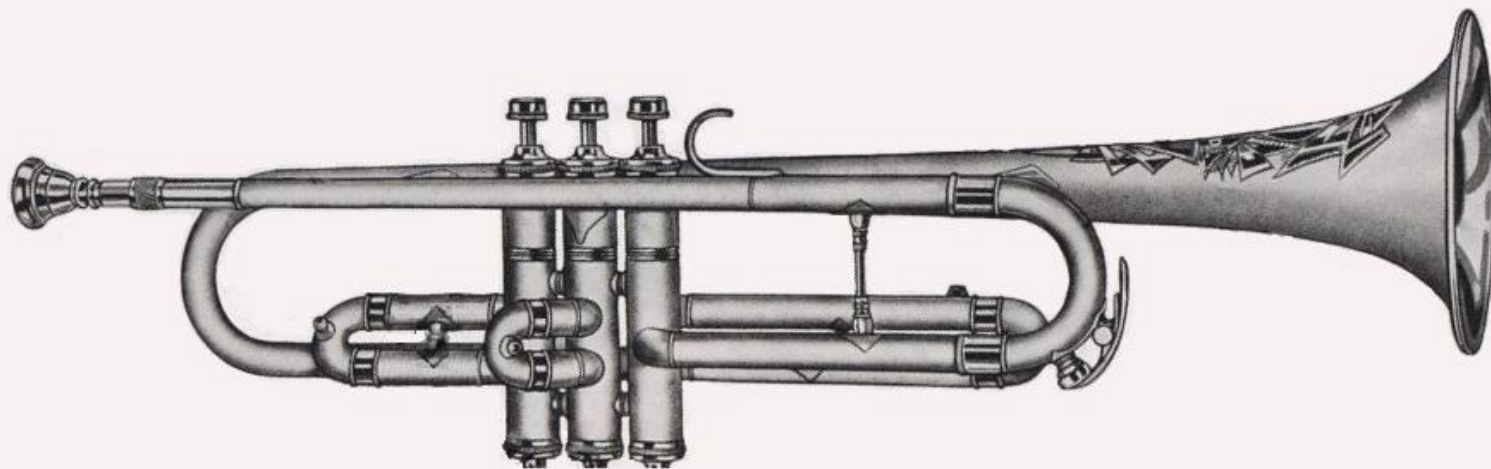
Bore: Medium

Bell Material: Yellow brass*

Bell Type: 2-piece

Name(s): Master Model, Master Model #2, #1065

Special Characteristics: An indent on the tuning slide trapped against a retaining clamp on the outside. *Silvertone Model 1065S with Sterling Bell shown (later called Silversonic)



Cleveland Model 603-T Treador Trumpet

Years Built: 1937 -1953+

Key(s): B-flat

Pitching: LP

Front Slide:

Rear Slide: Tuning

Tuning Lock:

Bore: Medium

Bell Material: Yellow brass

Bell Type: 2 Piece

Name(s): .

Special Characteristics: 3rd slide throw/new bottom caps (shown) appear on this and 600 in 1949.



Cleveland Model 600 Superior Trumpet

Years Built: 1937 -1965

Key(s): B-flat

Pitching: LP

Front Slide:

Rear Slide: Tuning

Tuning Lock:

Bore: Large

Bell Material: Yellow brass

Bell Type:

Name(s): Cleveland 600-B , Cleveland Superior Model 600, Cleveland 600

Special Characteristics: 3rd slide throw ring and new valve caps (shown) start in 1949.



Cleveland Model 601-B Cornet

Years Built: 1937 -1965

Key(s): B-flat

Pitching: LP

Front Slide:

Rear Slide: Tuning

Tuning Lock:

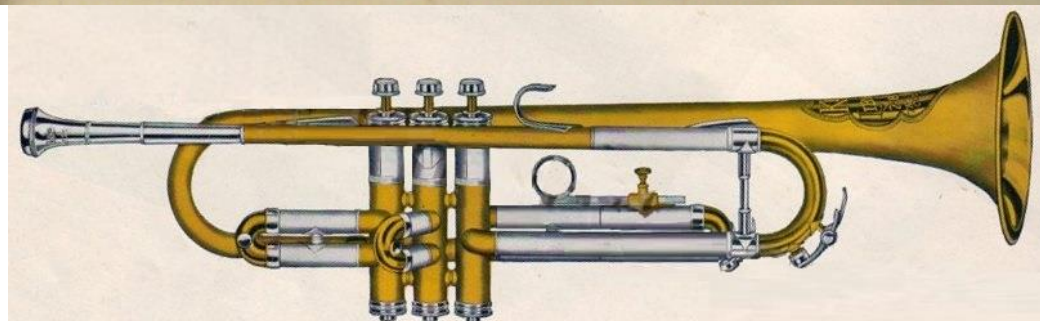
Bore:

Bell Material: Yellow brass

Bell Type:

Name(s): .

Special Characteristics: The throw ring and mid-length split in the third valve slide was only present on horns built after the mid to late 1950s.



King Liberty 2-B Trumpet

Years Built: 1937 - >1965

Key(s): B-flat

Pitching: LP

Front Slide: Tuning

Rear Slide: None

Tuning Lock: None

Bore: .458

Bell Material: Yellow brass

Bell Type:

Name(s): 2-B Trumpet (post-ca.1950), #1051 (1937-ca.1950), #1052 (ca.1950-1965)

Special Characteristics: King Liberty 3-B also built 1937-1941 as .468 bore version



King Liberty 3-B Trumpet

Years Built: 1936 - 1938

Front Slide: Tuning

Bore: .468

Name(s):

Special Characteristics:

Key(s): B-flat

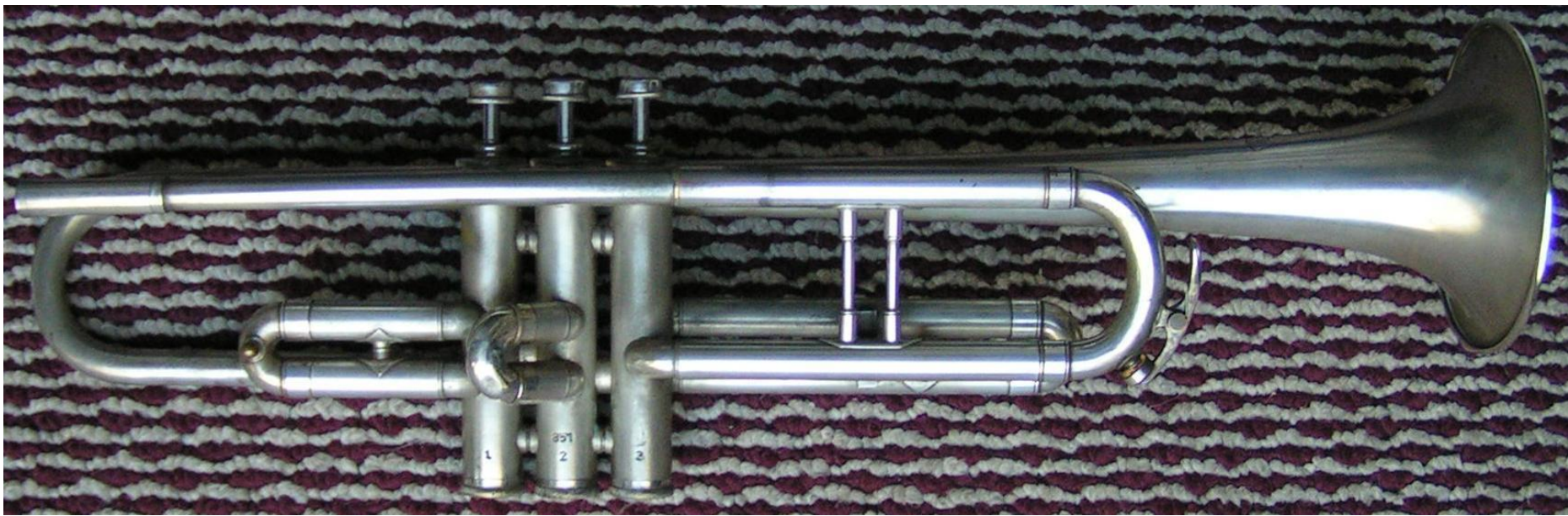
Rear Slide: None

Bell Material: Yellow brass

Pitching: LP

Tuning Lock: None

Bell Type: 1-piece



Gladiator Trumpet

Years Built: 1940-1941, 1950-1953 (“suspended” 1946-48)

Gladiator was created as a budget student line, intended to sell at low margin to those who could only afford stencil instruments. There were only four instruments in the line, a cornet, a trumpet, a trombone and a clarinet. In that respect, it resembled the 1938-1937 “Ideal” line from Frank Holton & Co. which offered just the three brass instruments in a similar market. The venture proved unprofitable and, though attempted twice, was not continued for long.

Above is a 1940 Gladiator trumpet.





Gladiator Cornet

Years Built: 1940-1941, 1950-1953 (“suspended” 1946-48)

Key(s): B-flat

Pitching: LP

Front Slide: Tuning

Rear Slide:

Tuning Lock:

Bore:

Bell Material: Yellow brass

Bell Type: 2-piece

Name(s): .

Special Characteristics: Remaining length taken up in loop on bell tail which could have been used for a tuning slide, but was not (not built as a slide).





King Super-20 Trumpet

Years Built: 1946 - 1965

Key(s): A & B-flat

Pitching: LP

Front Slide: Tuning

Rear Slide: A/B-flat

Tuning Lock: Retaining ring

Bore: .448(S1) or .458(S2)

Bell Material: Yellow brass

Bell Type: 1-piece, 2-pc >1949

Name(s):

Special Characteristics: S1 is #1047, S2 is #1048



King Super-20 Symphony Trumpet

Years Built: 1946 - 1965

Key(s): B-flat

Pitching: LP

Front Slide: Tuning

Rear Slide: None

Tuning Lock: None

Bore: "Dual Bore" .458-.468 **Bell Material:** Yellow brass* **Bell Type:** 1-piece, later 2-piece

Name(s): Super 20 Symphony, Dual Bore Symphony, King Symphony, #1049 & #1049S

Special Characteristics: Available with optional sterling silver leadpipe and bell as the Symphony Silversonic model. 1963 with 2-piece brass bell and sterling pipe shown



King Super-20 Cornet

Years Built: ca. 1950 - >1965 **Key(s):** B-flat

Pitching: LP

Front Slide: Tuning

Rear Slide: None

Tuning Lock: None

Bore: "Dual Bore" .458-.468 **Bell Material:** Yellow brass* **Bell Type:** 2-piece

Name(s): #1066, #1067S as Silversonic

Special Characteristics: Master model variant. *Available as shown or with sterling silver bell and silver leadpipe as the Super-20 Silversonic cornet.



King Silver Flair Trumpet

Years Built: 1964 - >1965

Key(s): B-flat

Pitching: LP

Front Slide: Tuning

Rear Slide: None

Tuning Lock: None

Bore: .462

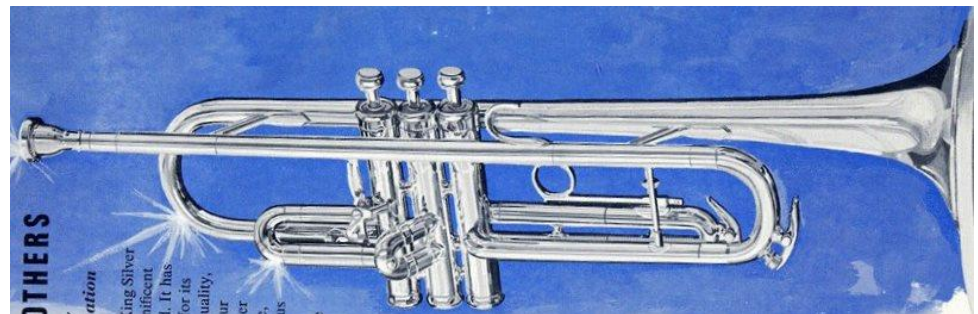
Bell Material: Yellow brass

Bell Type: 2-piece

Name(s): Silver Flair, #1055T

Special Characteristics: Model #1055

This 1968 example is made by KMI but is unchanged in design from the 1964 White.



{H.N. White catalog image}



King Flair Symphony Trumpet Prototype

Years Built: 1965

Key(s): B-flat

Pitching: LP

Front Slide: Tuning

Rear Slide: None

Tuning Lock: None

Bore: "Dual Bore" .458-.468 **Bell Material:** Yellow brass* **Bell Type:** 2-piece

Name(s): Not known what it would have been called

Special Characteristics: A casualty of the sale to Nate Dolin in 1965. A dual bore prototype in Silver Flair wrap and trim. Some parts are stock Symphony. Engraved only "H.N. White".

List of Identified Models

Family/Model	Model #	Bell	Bore	Finish	Made by	Years Made	Opt.
1890s Stencils							
Superior (by) M. Bauer	7	Y.Brass		Raw Brass (SP?)	Bohland & Fuchs	1894 - ca. 1900	
Superior Silver Star		Y.Brass		Silverplate (R.Brass?)	Bohland & Fuchs	1895 - ca. 1900	
Silver Star	2	Y.Brass		Silverplate (R.Brass?)	Bohland & Fuchs	1895 - ca. 1900	
Union	9	Y.Brass		Raw Brass (SP?)	Bohland & Fuchs	1895 - ca. 1900	
Ca. 1900 Stencil							
Superior Silver Star		Y.Brass		Silverplate (R.Brass?)	Bohland & Fuchs	ca. 1900 - ca. 1910	
Imperial		Y. Brass		Silverplate (R.Brass?)	Bohland & Fuchs	ca. 1900 - ?	
Imperial	B+F American	debated		Silverplate (R.Brass?)	Bohland & Fuchs	>1905 - ca. 1915	
King (Lion's Head) Generation 1							
King Long Model cornet	230	Y.Brass	Small	Polished Brass	H.N. White	<1900 - 1919+	
King Long Model cornet	231	Y.Brass	Small	Silverplate, gold flare	H.N. White	<1900 - 1919+	
King Long Model cornet	232	Y.Brass	Small	Silverplate, gold trim	H.N. White	<1900 - 1919+	
King Long Model cornet	233	Y.Brass	Small	Goldplate	H.N. White	<1900 - 1919+	
King "Famous" Short Model cornet	201	Y.Brass	Medium	Polished Brass	H.N. White	ca. 1900 - 1914	
King "Famous" Short Model cornet	202	Y.Brass	Medium	Silverplate	H.N. White	ca. 1900 - 1914	
King "Famous" Short Model cornet	203	Y.Brass	Medium	Silverplate, gold flare	H.N. White	ca. 1900 - 1914	
King "Famous" Short Model cornet	205	Y.Brass	Medium	Silverplate, gold trim	H.N. White	ca. 1900 - 1914	
King "Famous" Short Model cornet	207	Y.Brass	Medium	Goldplate	H.N. White	ca. 1900 - 1914	
King Combination/Vocal cornet	209	Y.Brass	Medium	Polished Brass	H.N. White	ca. 1900 - 1911/12	
King Combination/Vocal cornet	210	Y.Brass	Medium	Silverplate	H.N. White	ca. 1900 - 1911/12	
King Combination/Vocal cornet	211	Y.Brass	Medium	Silverplate, gold flare	H.N. White	ca. 1900 - 1911/12	
King Combination/Vocal cornet	212	Y.Brass	Medium	Silverplate, gold trim	H.N. White	ca. 1900 - 1911/12	
King Combination/Vocal cornet	214	Y.Brass	Medium	Goldplate	H.N. White	ca. 1900 - 1911/12	
King Large Bore Model cornet	275	Y.Brass	Large	Polished Brass	H.N. White	ca. 1900 - 1911/12	
King Large Bore Model cornet	276	Y.Brass	Large	Silverplate, gold flare	H.N. White	ca. 1900 - 1911/12	
King Large Bore Model cornet	277	Y.Brass	Large	Silverplate, gold trim	H.N. White	ca. 1900 - 1911/12	
King Large Bore Model cornet	278	Y.Brass	Large	Goldplate	H.N. White	ca. 1900 - 1911/12	
King Small Bore trumpet	215	Y.Brass	Small	Polished Brass	H.N. White	19?? - 1911 (+?)	HP or LP
King Small Bore trumpet	216	Y.Brass	Small	Silverplate	H.N. White	19?? - 1911 (+?)	HP or LP
King Small Bore trumpet	217	Y.Brass	Small	Silverplate, gold flare	H.N. White	19?? - 1911 (+?)	HP or LP
King Small Bore trumpet	218	Y.Brass	Small	Silverplate, gold trim	H.N. White	19?? - 1911 (+?)	HP or LP
King Small Bore trumpet	220	Y.Brass	Small	Goldplate	H.N. White	19?? - 1911 (+?)	HP or LP

List of Identified Models

Family/Model	Model #	Bell	Bore	Finish	Made by	Years Made	Opt.
King Improved Model (second gen)							
King Improved Model Perfecto (#1) cornet		Y.Brass	Medium	Polished Brass	H.N. White	by 1910 - 1914	
King Improved Model Perfecto (#1) cornet		Y.Brass	Medium	Silverplate	H.N. White	by 1910 - 1914	
King Improved Model Perfecto (#1) cornet		Y.Brass	Medium	Silverplate, gold flare	H.N. White	by 1910 - 1914	
King Improved Model Perfecto (#1) cornet		Y.Brass	Medium	Silverplate, gold trim	H.N. White	by 1910 - 1914	
King Improved Model Perfecto (#1) cornet		Y.Brass	Medium	Goldplate	H.N. White	by 1910 - 1914	
King Improved Model cornet (Long)	230	Y.Brass	Small	Polished Brass	H.N. White	ca. 1911 - 1916	
King Improved Model cornet (Long)	231	Y.Brass	Small	Silverplate, gold flare	H.N. White	ca. 1911 - 1916	
King Improved Model cornet (Long)	232	Y.Brass	Small	Silverplate, gold trim	H.N. White	ca. 1911 - 1916	
King Improved Model cornet (Long)	233	Y.Brass	Small	Goldplate	H.N. White	ca. 1911 - 1916	
King Improved Model cornet (Long)		Y.Brass	Large	Silverplate	H.N. White	ca. 1911 - 1916	
King Improved Model cornet (Long)		Y.Brass	Large	Silverplate, gold flare	H.N. White	ca. 1911 - 1916	
King Improved Model cornet (Long)		Y.Brass	Large	Silverplate, gold trim	H.N. White	ca. 1911 - 1916	
King Improved Model cornet (Long)		Y.Brass	Large	Goldplate	H.N. White	ca. 1911 - 1916	
King Improved Model trumpet		Y.Brass	Sm., Med., Lg.	Polished Brass	H.N. White	ca. 1911 - 1915	HP or LP
King Improved Model trumpet		Y.Brass	Sm., Med., Lg.	Silverplate	H.N. White	ca. 1911 - 1915	HP or LP
King Improved Model trumpet		Y.Brass	Sm., Med., Lg.	Silverplate, gold flare	H.N. White	ca. 1911 - 1915	HP or LP
King Improved Model trumpet		Y.Brass	Sm., Med., Lg.	Silverplate, gold trim	H.N. White	ca. 1911 - 1915	HP or LP
King Improved Model trumpet		Y.Brass	Sm., Med., Lg.	Goldplate	H.N. White	ca. 1911 - 1915	HP or LP
King Special cornet		Y.Brass	Large	Polished Brass	H.N. White	ca. 1912 - 1916(?)	
King Special cornet		Y.Brass	Large	Silverplate	H.N. White	ca. 1912 - 1916(?)	
King Special cornet		Y.Brass	Large	Silverplate, gold flare	H.N. White	ca. 1912 - 1916(?)	
King Special cornet		Y.Brass	Large	Silverplate, gold trim	H.N. White	ca. 1912 - 1916(?)	
King Special cornet		Y.Brass	Large	Goldplate	H.N. White	ca. 1912 - 1916(?)	
King Improved Model Vocal/Combination cornet	209	Y.Brass	Medium	Polished Brass	H.N. White	ca. 1912 - <1916	
King Improved Model Vocal/Combination cornet	211	Y.Brass	Medium	Silverplate, gold flare	H.N. White	ca. 1912 - <1916	
King Improved Model Vocal/Combination cornet	212	Y.Brass	Medium	Silverplate, gold trim	H.N. White	ca. 1912 - <1916	
King Improved Model Vocal/Combination cornet	214	Y.Brass	Medium	Goldplate	H.N. White	ca. 1912 - <1916	
Improved Perfecto #2 cornet		Y.Brass	Medium	Polished Brass	H.N. White	by 1914 - 1921	
Improved Perfecto #2 cornet		Y.Brass	Medium	Silverplate	H.N. White	by 1914 - 1921	
Improved Perfecto #2 cornet		Y.Brass	Medium	Silverplate, gold flare	H.N. White	by 1914 - 1921	
Improved Perfecto #2 cornet		Y.Brass	Medium	Silverplate, gold trim	H.N. White	by 1914 - 1921	
Improved Perfecto #2 cornet		Y.Brass	Medium	Goldplate	H.N. White	by 1914 - 1921	

List of Identified Models

Family/Model	Model #	Bell	Bore	Finish	Made by	Years Made	Opt.
King Third Generation / Master Models							
King Master Model cornet	700	Y.Brass	Medium or Large	Polished Brass	H.N. White	1915 - 1934	
King Master Model cornet	701	Y.Brass	Medium or Large	Silverplate, gold flare	H.N. White	1915 - 1934	
King Master Model cornet	702	Y.Brass	Medium or Large	Silverplate, gold trim	H.N. White	1915 - 1934	
King Master Model cornet	703	Y.Brass	Medium or Large	Goldplate	H.N. White	1915 - 1934	
King Master Model Silvertone cornet		Sterling	Medium or Large	Laquer or silverplate	H.N. White	1924 - 1934	
King Master Model trumpet	215	Y.Brass	Small or Medium	Polished Brass	H.N. White	1915/16 - 1919	
King Master Model trumpet	216	Y.Brass	Small or Medium	Silverplate	H.N. White	1915/16 - 1919	
King Master Model trumpet	217	Y.Brass	Small or Medium	Silverplate, gold flare	H.N. White	1915/16 - 1919	
King Master Model trumpet	218	Y.Brass	Small or Medium	Silverplate, gold trim	H.N. White	1915/16 - 1919	
King Master Model trumpet	220	Y.Brass	Small or Medium	Goldplate	H.N. White	1915/16 - 1919	
King Master Model C Vocal trumpet	900 / 1055	Y.Brass	0.458"	Polished Brass	H.N. White	1915/16 - 1941	
King Master Model C Vocal trumpet	901 / 1055	Y.Brass	0.458"	Silverplate, gold flare	H.N. White	1915/16 - 1941	
King Master Model C Vocal trumpet	902 / 1055	Y.Brass	0.458"	Silverplate, gold trim	H.N. White	1915/16 - 1941	
King Master Model C Vocal trumpet	903 / 1055	Y.Brass	0.458"	Goldplate	H.N. White	1915/16 - 1941	
Imperial cornet (also stencilled as McMillin Crown)		Y.Brass	Large	Silverplate (R.Brass?)	H.N. White	ca. 1915 - ca. 1920	
King Cavalry (Military) cornet	800	Y.Brass	Medium	Polished Brass	H.N. White	1916 - 1919	
King Cavalry (Military) cornet	801	Y.Brass	Medium	Silverplate, gold flare	H.N. White	1916 - 1919	
King Cavalry (Military) cornet	802	Y.Brass	Medium	Silverplate, gold trim	H.N. White	1916 - 1919	
King Cavalry (Military) cornet	803	Y.Brass	Medium	Goldplate	H.N. White	1916 - 1919	
King Master Model Combination / Vocal cornet	209	Y.Brass	Medium	Polished Brass	H.N. White	by 1916 - 1941	
King Master Model Combination / Vocal cornet	210	Y.Brass	Medium	Silverplate	H.N. White	by 1916 - 1941	
King Master Model Combination / Vocal cornet	211	Y.Brass	Medium	Silverplate, gold flare	H.N. White	by 1916 - 1941	
King Master Model Combination / Vocal cornet	212	Y.Brass	Medium	Silverplate, gold trim	H.N. White	by 1916 - 1941	
King Master Model Combination / Vocal cornet	214	Y.Brass	Medium	Goldplate	H.N. White	by 1916 - 1941	
Cleveland Musical Instrument Company (Independent)							
Cleveland trumpet		Y.Brass		Laquer or silverplate	Cleveland M.I.C.	1919 - 1925	
American Standard trumpet		Y.Brass		Laquer or silverplate	Cleveland M.I.C.	1919 - 1925	
American Standard cornet		Y.Brass		Laquer or silverplate	Cleveland M.I.C.	1919 - 1925	

List of Identified Models

Family/Model	Model #	Bell	Bore	Finish	Made by	Years Made	Opt.
Between the Wars							
King Junior (renamed Imperial) cornet	1070	Y.Brass		Silverplate (R.Brass?)	H.N. White	1920 - 1938	
King Liberty trumpet	15	Y.Brass		Polished Brass	H.N. White	1920 - 1923	
King Liberty trumpet	16	Y.Brass		Silverplate	H.N. White	1920 - 1923	
King Liberty trumpet	17	Y.Brass		Silverplate, gold flare	H.N. White	1920 - 1923	
King Liberty trumpet	18	Y.Brass		Silverplate, gold trim	H.N. White	1920 - 1923	
King Liberty trumpet	20	Y.Brass		Goldplate	H.N. White	1920 - 1923	
King Liberty trumpet	1049	Y.Brass	Small (.438")	RB, LQ, SP, SP+G, GP	H.N. White	1924 - 1932	
King Liberty trumpet	1050	Y.Brass	Medium (.448")	RB, LQ, SP, SP+G, GP	H.N. White	1924 - 1932	
King Liberty trumpet	1051	Y.Brass	Large (.468")	RB, LQ, SP, SP+G, GP	H.N. White	1924 - 1932	
King Liberty Silvertone trumpet	1049S	Sterling	Small (.438")	RB, LQ, SP, SP+G, GP	H.N. White	1925 - 1932	
King Liberty Silvertone trumpet	1050S	Sterling	Medium (.448")	RB, LQ, SP, SP+G, GP	H.N. White	1925 - 1932	
King Liberty Silvertone trumpet	1051S	Sterling	Large (.468")	RB, LQ, SP, SP+G, GP	H.N. White	1925 - 1932	
Cleveland 603 trumpet	603	Y.Brass		RB, LQ, SP, SP+G, GP	H.N. White	1924 - 1936	
American Standard Model 205 cornet	205	Y.Brass		Laquer or silverplate	H.N. White	1925 - 1962	
American Standard Model 200 trumpet	200	Y.Brass		Laquer or silverplate	H.N. White	1925 - 1962	
American StandardC Vocal trumpet	203	Y.Brass		Laquer or silverplate	H.N. White	1925 - ca. 1935	
Cleveland Greyhound trumpet	600	Y.Brass		RB, LQ, SP, SP+G, GP	H.N. White	1930(?) - 1936(?)	
American Standard Student Prince	204	Y.Brass		Laquer or silverplate	H.N. White	1924(?) - 1939(?)	
King Commander cornet	1067	Y.Brass	Medium	RB, LQ, SP, SP+G, GP	H.N. White	1928 - 1936	Bb/A rotary select
King Commander cornet	1068	Y.Brass	Large	RB, LQ, SP, SP+G, GP	H.N. White	1928 - 1936	Bb/A rotary select
Cleveland Euclid (renamed King Junior) cornet	601	Y.Brass		RB, LQ, SP, SP+G, GP	H.N. White	1938 - 1941	
King New Professional Long Model cornet	1069	Y.Brass	Medium	RB, LQ, SP, SP+G, GP	H.N. White	1931 - 1941	
Late Depression Portfolio Refresh							
King Liberty #2 trumpet	1050	Y.Brass	.458"	RB, LQ, SP, SP+G, GP	H.N. White	1933 - 1941	
King Liberty Silvertone trumpet	1050S	Sterling	.458"	Laquer or silverplate	H.N. White	1933 - 1941	
King Master Model #2 cornet	1065	Y.Brass	Medium	RB, LQ, SP, SP+G, GP	H.N. White	1934 - 1965	
King Silvertone cornet	1065S	Sterling	Medium	Laquer	H.N. White	1934 - ca. 1950	
Cleveland Toreador trumpet	603T	Y.Brass		Laquer or silverplate	H.N. White	1937 - after 1953	
Cleveland Superior trumpet	600B	Y.Brass	Large	Laquer or silverplate	H.N. White	1937 - 1965	
Cleveland cornet	601B	Y.Brass		Laquer or silverplate	H.N. White	1937 - 1965	
King Liberty 2-B trumpet	1051	Y.Brass	.458"	RB, LQ, SP, SP+G, GP	H.N. White	1937 - 1941	
King 2-B Silvertone trumpet	1051S	Sterling	.458"	Laquer or silverplate	H.N. White	1937 - 1941	
King Liberty 3-B trumpet	1052	Y.Brass	.468"	RB, LQ, SP, SP+G, GP	H.N. White	1937 - 1937	
Gladiator trumpet		Y.Brass		Laquer or silverplate	H.N. White	1940 - 1941	
Gladiator cornet		Y.Brass		Laquer or silverplate	H.N. White	1940 - 1941	

List of Identified Models

Family/Model	Model #	Bell	Bore	Finish	Made by	Years Made	Opt.
Post War							
King Liberty #2 trumpet	1045	Y.Brass	.458"	RB, LQ, SP, SP+G, GP	H.N. White	1946 - 1965	Brace change 1950s
King Liberty Silvertone trumpet	1045S	Y.Brass	.458"	Laquer or silverplate	H.N. White	1946 - before 1963	Balanced model opt.
King Super-20 S1 trumpet	1047M	Y.Brass	.448"	RB, LQ, SP, SP+G, GP	H.N. White	1946 - ca. 1950	
King Super-20 S2 trumpet	1047L	Y.Brass	.458"	RB, LQ, SP, SP+G, GP	H.N. White	1946 - ca. 1950	
King Super-20 Symphony	1049	Y.Brass	.458/68" DB	RB, LQ, SP, SP+G, GP	H.N. White	1948 - ca. 1950	
King Super-20 Symphony Silvertone/sonic	1049S	Sterling	.458/68" DB	Laquer or silverplate	H.N. White	1948 - ca. 1950	Balanced model opt.
Gladiator trumpet		Y.Brass		Laquer or silverplate	H.N. White	1950 - 1953	
Gladiator cornet		Y.Brass		Laquer or silverplate	H.N. White	1950 - 1953	
King Super-20 S1 trumpet	1047	Y.Brass	.448"	RB, LQ, SP, SP+G, GP	H.N. White	1950 - 1965	
King Super-20 S2 trumpet	1048	Y.Brass	.458"	RB, LQ, SP, SP+G, GP	H.N. White	1950 - 1965	
King Super-20 Symphony	1049	Y.Brass	.458/68" DB	RB, LQ, SP, SP+G, GP	H.N. White	1950 - >1965	
King Symphony Silversonic	1049S	Sterling	.458/68" DB	Laquer or silverplate	H.N. White	1950 - >1965	Balanced model opt.
King Silversonic cornet	1065S	Sterling	Medium	Laquer	H.N. White	ca. 1950 - 1965	
King Super-20 cornet (Master model var.)	1066	Y.Brass		RB, LQ, SP, SP+G, GP	H.N. White	ca. 1950 - >1965	
King Silversonic cornet (Super 20)	1067S	Sterling		Laquer or silverplate	H.N. White	ca. 1950 - >1965	
King Liberty 2-B trumpet	1052	Y.Brass	.458"	RB, LQ, SP, SP+G, GP	H.N. White	ca. 1950 - 1965	
Restructuring (pre-sale)							
King Liberty 2-B trumpet with "tone-tempered bell"	1045S	Y.Brass	.458"	RB, LQ, SP, SP+G, GP	H.N. White	1963 - 1965	
Tempo trumpet (renamed American Standard 200)	1300	Y.Brass		Lacquer or Nickel	H.N. White	1963 - 1965	
Tempo cornet (renamed American Standard 205)	1302	Y.Brass		Lacquer or Nickel	H.N. White	1963 - 1965	
King Silver Flair trumpet	1055	Y.Brass	.462"	Silverplate	H.N. White	1964 - >1965	
King Flair Symphony		Y.Brass	.458/68" DB		H.N. White	NEVER PRODUCED	

KMI King-2000 Series

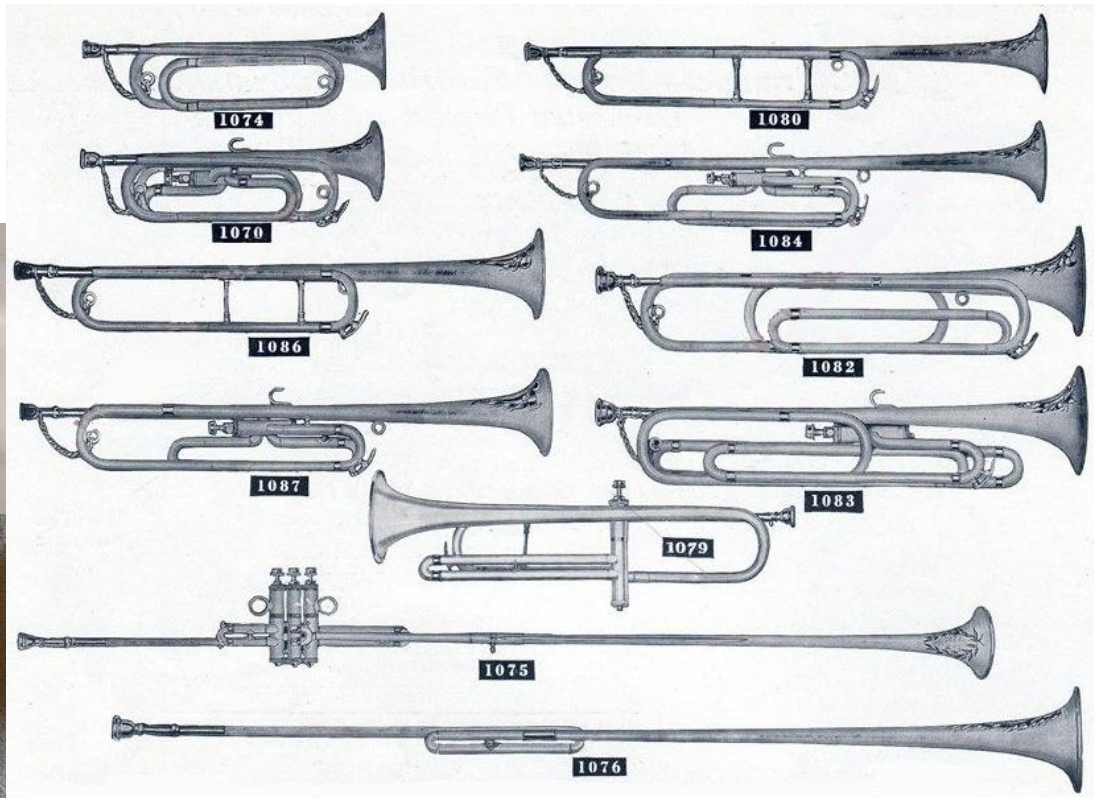
While the purpose of this guide is to cover the models produced and sold by the HN White Company, the second generation of King Musical Instruments also had a professional line, which is quite obscure as it was built for only about 4 years. These were intended to be top quality, but still below the “artist level” Benge product KMI also owned and produced at the time. These existed between the period when KMI leveraged the HN White products it inherited, increasing volume and cutting costs over that time (1965-79), and the time of the intermediate grade Model 2055/2065 Flair trumpets that would be introduced in 1984 after KMI merged into United Musical Instruments (UMI). A brief table of what the author has found on those models is offered here below, as little seems to be available on the internet.

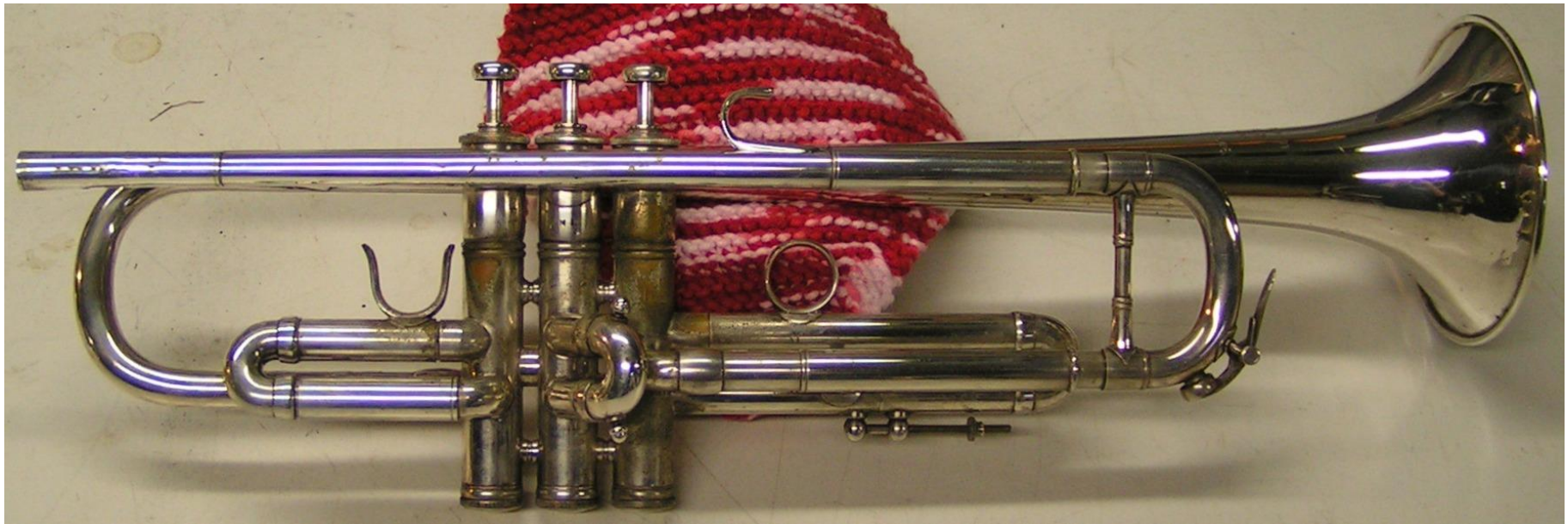
KMI King 2000-series 1979-83			
Model	Family	Bore	Key
2000 / 2000-AT	Commercial Trumpet	ML (.459")	Bb
2001 / 2001-AT	Commercial Trumpet	L (.468")	Bb
2003	Professional Cornet	ML+ (.462")	Bb
2006 / 2006-AT	Symphonic Trumpet	ML+ (.462")	Bb
2007 / 2007-AT	Symphonic Trumpet	L (.468")	Bb
2008 / 2008-AT	Symphonic Trumpet	ML (.459")	C

King Bugles

Built between WWI & WWII

1078 Bb, 1074 G (BSA), 1076 Bb & #? D





Other Brands: Benge

Benge was never a brand of the HN White Company, but was owned by the successor firm KMI.

- Chicago Benge: (1934-1952) Serials 500-3350. With the help of neighbor and colleague Renold Schilke, Benge modified existing Bessons and then began to build his own entirely.
- Burbank Benge: (1953-1970) Serials 3350-8400. Elden Benge moved to California and established a workshop in his garage. Following his 1960 death, son Donald continued the firm.
- LA Benge (phase 1): (1970-1972) Serials 8380-10000. Leisure Time Industries bought Benge and moved the staff and tooling to the back of Lockie Music in Los Angeles.
- LA Benge (phase 2): (1972-1983) Serials 10000-43500. King Musical Instruments purchased Benge and moved it to the Anaheim plant now used by Zig Kanstul- who left Olds for Benge.
- USA Benge: (1983-2007) Production moved to the King Eastlake Ohio plant. Designs were solely KMI. In 1985, King was bought by Conn, which merged into Conn-Selmer in 2000.
- Benge Bore Sizes: M=.453", ML=.460", MLP=.464", L=.468", LP=.470" (1973 LA Benge 3X shown)