



Holden Commodore



Holden
Let's go there

For drivers.

From the moment you take your place behind the wheel, this new take on an Australian icon will delight.

This is a Commodore like no other. Turning heads and shifting attitudes, this masterpiece of automotive engineering is set to move you in more ways than ever.

With unprecedented levels of safety, a multitude of technological helping hands, and a driving experience that could only be described as no less than brilliant, this Commodore is for you, that's for sure.



Commodore VXR Liftback in Abalone White.

For more than looks.

Collaborating closely with local engineers, this latest generation Commodore was designed and built in Germany. If ever there was a glowing example of balance in styling, here you have it. But make no mistake, these impressive looks don't come at the expense of driving prowess. Underpinning its striking shape is meticulous engineering and brutal testing, combining to ensure this Commodore fits Australian roads perfectly.

Speaking of fitting, a complete rethink of the rear sees the introduction of a 'liftback', offering a larger, sportier boot opening for all your gear. This is a first for Commodore.

Back to styling, head to the side and you'll find stunningly sculpted 20" Alloy wheels¹. While at the front, flanking its arresting grille, are Adaptive LED Matrix Headlamps¹. Not only striking to look at, these lights actually pivot, shifting light towards wherever you're turning, giving you even greater visibility. And, how's this for ingenious: you'll enjoy high-beam-like brilliance at all times, because these intuitive lights automatically switch off the individual parts of the beams that would otherwise be directed at oncoming drivers.

¹ Calais-V and VXR models only



Commodore VXR Liftback in Abalone White.

For safety.

Quite simply, this is the safest Commodore ever, loaded with innovative devices designed to help and protect.

We refer to our suite of active safety features as HoldenEye®.

There's Lane Keep Assist; think of it as a little helping hand to keep things on the straight and narrow.

While Advanced Park Assist is a larger helping hand - in fact, we're talking not needing to touch the wheel at all to park. Then there's Autonomous Emergency Braking (AEB) with Pedestrian Detection which kicks in if it senses a potential collision.

Beyond HoldenEye®, this Commodore's nifty 360 Degree Camera¹ gives you a comprehensive view of your world around the car when reversing.

All the while, Adaptive Cruise Control (ACC)¹ constantly scans the changing speed of vehicles in front of you, and if the car in front stops, you'll do the same.

¹Calais-V and VXR models only



Commodore VXR Liftback in Cosmic Grey.



For the latest tech.

These days, life and technology go hand-in-hand. Whether in our homes, our pockets, or in our cars, the latest tech is no longer a 'nice to have', it's a 'must have', and this Commodore has it all.

Apple CarPlay and Android Auto puts this Commodore at one with your phone, providing a comprehensive entertainment hub. Once connected it enables your phone to display a variety of useful apps via a large 8" touch screen¹ or by using voice control. On the subject of phones, Wireless phone charging² is a welcome addition to this Commodore, because we can all do with less cords in our lives, right?

And let's not forget the Bose® premium audio system³, pitching exquisite sound from multiple speakers. Of course, all of this ingenious technology is in addition to the staples of modern driving - things like satellite navigation¹, a sunroof³ and much, much more.

And what better way to bask in all this cleverness than from the comfort of your massaging seats⁴. Speaking of seats, the driver and front passenger seats are not only ventilated³, they also have a heated function¹.

¹ Calais, Calais-V, RS-V and VXR models only

² Calais, Calais-V, RS-V and VXR models only. Compatible devices only

³ Calais-V and VXR models only

⁴ VXR driver and front passenger only, Calais-V driver only



Commodore VXR Liftback

For the every day.

Commuting, cruising, ducking out to get the milk. They're all journeys. Some smaller than others. But they're equally important. Our aim is to make each of these drives as rewarding as the next. So once testing was finalised in Germany, we tasked our engineers to perform over 200,000km of rigorous testing right here on roads of every kind across Australia. The result is a Commodore tuned to local perfection.

Possibly the biggest change in comparison to previous models comes in the way power is distributed. You now have the choice of front wheel drive or an Adaptive All-Wheel Drive (AWD)¹ system - two big firsts for Commodore.

Designed for the ultimate in drivability, wet road performance and an effortless launch, Commodore's all-new Adaptive All-Wheel Drive (AWD)¹ is standard on all V6 models and provides new-generation, state-of-the-art Twinster technology. The twin clutch system reads road inputs up to 100 times per second and distributes power between the front and rear axles. In short, Commodore's Adaptive AWD system makes sure the most effective wheels are driving the vehicle at all times.

All of this translates to confidence, especially when towing a caravan or trailer, both of which this Commodore can haul, up to a weight of just over 2 tonnes*.

¹ RS (with V6 option), RS-V, Calais-V & VXR
* V6 models only



Calais-V Liftback in Abalone White.

Commodore LT



An icon, reborn and revitalised, there's nothing 'base' about the LT: propelled by a powerful yet fuel efficient 2.0L Turbo petrol direct-injection 4-cylinder engine. All the while diligently watched over by a suite of HoldenEye® protective innovations.

POWERTRAIN

- 2.0L Turbo with 9-speed automatic transmission (191kW/350Nm)
- Optional 2.0L Turbo Diesel with 8-speed automatic transmission (125kW/400Nm)

SAFETY

- 5 Star ANCAP safety rating
- 6 Airbags (Driver, Pass, Side & Curtain)
- Electronic Stability Control (ESC) System
- Front & Rear Park Assist / Rear Camera
- LED Daytime Running Lamps
- Auto Headlights
- Advanced Park Assist
- Rain sensing wipers
- Active Bonnet
- HoldenEye®
 - Autonomous Emergency Braking (AEB) with Pedestrian Detection
 - Lane Departure Warning (LDW)
 - Lane Keep Assist (LKA)
 - Forward Collision Alert (FCA)
 - Following Distance Indicator (FDI)

STYLE & CONVENIENCE

- 17" Alloy Wheels
- Cruise control (w/ speed limiter)
- Passive Entry and Push-button Start (PEPS) (w/ remote start)
- Dual zone climate control
- 60/40 fold flat rear seat
- LED tail lamps
- 8 Way Power Driver Seat

INFOTAINMENT

- 7" colour touchscreen
- Phone Projection with Apple CarPlay® & Android® Auto
- USB input with iPod® connectivity
- 7 speaker audio



Sportwagon model shown.



Liftback model shown.

Commodore RS



Stepping things up, this impressive example of style and comfort ensures you enjoy both of these worlds equally. The tech is there, with Apple CarPlay® and Android® Auto, as is an abundance of features, charged with adding to the tranquility of the drive.

POWERTRAIN

- 2.0L Turbo with 9-speed automatic transmission (191kW/350Nm)
- Optional 3.6L V6 with 9-speed automatic transmission (235kW/381Nm) with Adaptive All-Wheel Drive¹

ADDITIONAL FEATURES TO THE LT

STYLE & CONVENIENCE

- 18" Alloy Wheels
- Sports Body Kit (front fascia & skirts)
- Sports cloth seat trim
- Sports front seats
- Sports leather steering wheel
- Rear lip spoiler
- Hands-free power tailgate (Sportwagon only)
- Ambient Lighting

INFOTAINMENT

- 8 Speaker premium audio (w/ V6 option)

SAFETY

- Side Blind Zone Alert
- Rear Cross Traffic Alert



Sportwagon model shown.



Liftback model shown.

¹Optional - Liftback only

Commodore RS-V



The first Commodore in the range with AWD as standard, the RS-V takes performance up a notch. With a 3.6L V6 235kW petrol engine, we couldn't be more sure of how it performs on the road.

POWERTRAIN

- 3.6L V6 with 9-speed automatic transmission (235kW/381Nm)
- Adaptive All-Wheel Drive
- HiperStrut suspension

ADDITIONAL FEATURES TO THE RS

STYLE & CONVENIENCE

- Leather seat trim (heated front seats)
- Sports Steering Wheel + Paddles
- Colour Head-Up Display
- 8" Enhanced Driver Information Display
- Privacy glass (Sportwagon only)
- Wireless phone charging*
- Alloy Pedals
- 40/20/40 flat folding rear seats

INFOTAINMENT

- 8" colour touchscreen
- Embedded satellite navigation
- Digital Radio (DAB+)



Sportwagon model shown.



Liftback model shown.

*Requires a compatible device

Commodore VXR



If it's exhilaration you crave, you'll receive it in spades with the performance range-topping VXR. An impressive power-plant coupled to All-Wheel Drive offers refined brawn and even greater confidence while cornering. The addition of Adaptive Cruise Control (ACC) enhances your safety on longer journeys.

ADDITIONAL FEATURES TO THE RS-V

TECHNOLOGY

- Adaptive LED Matrix Head lamps
- Adaptive Cruise Control (ACC)
- 360 Degree Camera

PERFORMANCE

- FlexRide adaptive suspension
- Brembo® front brakes
- Performance Seats (front) - Leather
- VXR lip spoiler

STYLE & CONVENIENCE

- 20" Alloy Wheels
- Electric sunroof
- Priority seat & mirror memory
- Driver & Passenger seat power side bolsters
- Driver & Passenger Massage / Memory Seat
- Ventilated front seats
- Heated rear seats
- VXR floor mats & sill plates

INFOTAINMENT

- Bose® premium audio system



Liftback model shown.

Commodore Calais



Step up to the Calais and sink into a first-class world of comfort. A 2.0L Turbo petrol direct-injection 4-cylinder engine is at the heart of this brilliantly appointed example of poise and purpose - made all the more luxurious thanks to heated front seats.

POWERTRAIN

- 2.0L Turbo with 9-speed automatic transmission (191kW/350Nm)
- Optional 2.0L Turbo Diesel with 8-speed automatic transmission (125kW/400Nm)

ADDITIONAL FEATURES TO THE LT

STYLE & CONVENIENCE

- 18" Alloy wheels
- Leather appointed seat trim
- Heated front seats
- Wireless phone charging*
- Fog lamps
- 4.2" Colour Driver Information Display
- Power fold mirrors
- Ambient lighting

INFOTAINMENT

- 8" colour touchscreen
- Embedded satellite navigation
- Digital radio (DAB+)
- 8 speaker audio

SAFETY

- Side Blind Zone Alert
- Rear Cross Traffic Alert



Liftback model shown.

Calais also available in Tourer model
*Requires a compatible device

Commodore Calais-V



Arguably the most luxurious Commodore ever created, the Calais-V has it all. From Adaptive LED Matrix Headlamps and Wireless phone charging¹, to a 360 Degree Camera, every bell and whistle has been enlisted into this remarkable top-of-the-range model.

POWERTRAIN

- 3.6L V6 with 9-speed automatic transmission (235kW/381Nm)
- Adaptive All-Wheel Drive
- HiperStrut suspension

ADDITIONAL FEATURES TO THE CALAIS

STYLE & CONVENIENCE

- 20" Alloy Wheels
- Electric sunroof
- Sports Steering Wheel & Paddles
- Priority seat & mirror memory
- Ventilated front seats
- Driver seat power side bolsters
- Heated rear seats
- Rear lip spoiler
- 40/20/40 split fold rear seats
- Massaging seat (driver only)

INFOTAINMENT

- Bose® premium audio system

TECHNOLOGY

- Adaptive LED Matrix Head lamps
- Adaptive Cruise Control
- 360 Degree Camera
- Colour Head-Up Display
- 8" Enhanced Driver Information Display



Liftback model shown.

¹Compatible devices only

Holden Commodore
Colour and trim



Darkmoon Blue



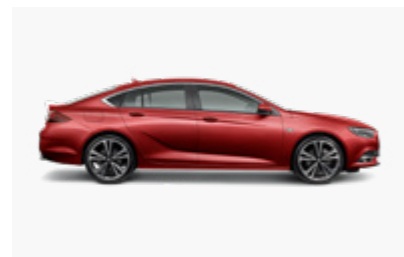
Absolute Red



Nitrate Silver



Abalone White



Rioja Red



Summit White



Cosmic Grey



Mineral Black

S Standard

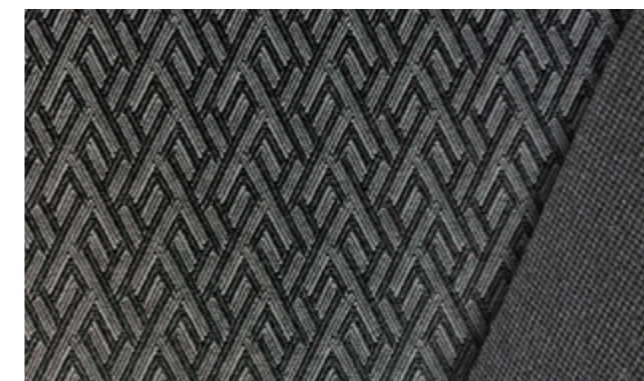
Colour Range

	LT	RS	RS-V	VXR	Calais	Calais-V
Rioja Red*	-	-	-	-	✓	✓
Nitrate Silver*	✓	✓	✓	✓	✓	✓
Summit White	✓	✓	✓	✓	✓	✓
Mineral Black*	✓	✓	✓	✓	✓	✓
Darkmoon Blue*	-	-	-	-	✓	✓
Absolute Red	✓	✓	✓	✓	-	-
Abalone White*	-	-	✓	✓	-	✓
Cosmic Grey*	✓	✓	✓	✓	✓	✓

*Prestige Paint (at extra cost)

Interior Trim

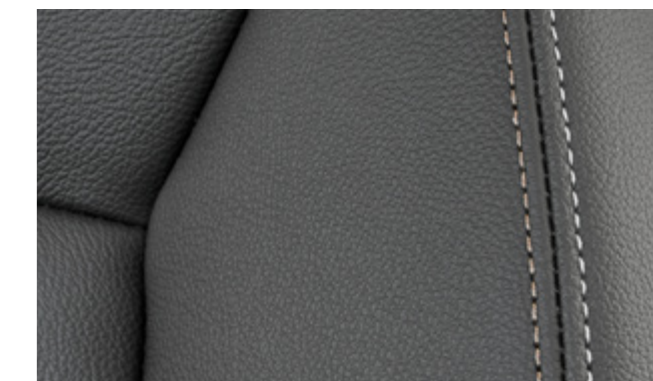
Jet Black cloth trim	S	-	-	-	-	-
Jet Black cloth/Sportec trim	-	S	-	-	-	-
Jet Black leather-appointed trim	-	-	-	-	S	-
Jet Black leather-appointed trim (perforated)	-	-	S	S	-	S



Jet Black cloth trim



Jet Black cloth/Sportec trim



Jet Black leather-appointed trim

Holden Commodore
Accessories



Smoked Bonnet Protector



All Weather Boot Liner



Roof Racks



Cargo Net



Full Weather Shield



Tow Bar



Headlight Protector



Front Floor Mats

We're sure you'll want to keep your new Commodore in top condition. That's why every accessory has been meticulously designed and manufactured to specifically protect your vehicle.

From floor mats and weather shields, to roof racks and headlight protectors, every accessory has been rigorously tested and comes with a generous warranty. Then there's the towbar, giving you the ability to pull whatever you need. Like all our accessories, we don't just think it's more reliable than ever, we're sure it is.



Lock Nuts



Rear Floor Mats



Door Sill



Slimline Weather Shield

Holden Commodore Features

S Standard O Optional

	LIFTBACK LUXURY			LIFTBACK SPORT			SPORTWAGON		
	LT	Calais	Calais-V	RS	RS-V	VXR	LT	RS	RS-V
2.0L Turbo 4-cylinder petrol engine (9 speed)	S	S	-	S	-	-	S	S	-
3.6L V6 petrol engine	-	-	S	O	S	S	-	-	S
9-speed automatic transmission	S	S	S	S	S	S	S	S	S
2.0L Turbo 4-cylinder diesel engine (8 speed)	O	O	-	-	-	-	O	-	-
8-speed automatic transmission (diesel engine only)	O	O	-	-	-	-	O	-	-
Stop/Start Technology	S	S	S	S	S	S	S	S	S
Front Wheel Drive (FWD)	S	S	-	S	-	-	S	S	-
Adaptive All-Wheel Drive (AWD)	-	-	S	O*	S	S	-	-	S
MacPherson Strut Assembly Front Suspension	S	S	-	S	-	-	S	S	-
Hiperstrut Assembly Front Suspension	-	-	S	O*	S	S	-	-	S
4 Link Rear Suspension	S	S	-	S	-	-	S	S	-
5 Link Rear Suspension	-	-	S	O*	S	S	-	-	S
Electric Power Steering	S	S	S	S	S	S	S	S	S
FlexRide adaptive suspension	-	-	-	-	-	S	-	-	-
17" Alloy Wheels	S	-	-	-	-	-	S	-	-
18" Alloy Wheels	-	S	-	S	S	-	-	S	S
20" Alloy Wheels	-	-	S	-	-	S	-	-	-
Brembo® front brakes	-	-	-	-	-	S	-	-	-
Spacesaver Spare Wheel and Tyre	S	S	S	S	S	-	S	S	S
Tyre Inflator Kit	-	-	-	-	-	S	-	-	-
Forward Collision Alert with Head-Up Warning	S	S	S	S	S	S	S	S	S
Lane Keep Assist	S	S	S	S	S	S	S	S	S
Autonomous Emergency Braking (AEB low speed)	S	S	-	S	S	-	S	S	S
Autonomous Emergency Braking (AEB all speed)	-	-	S	-	-	S	-	-	-
Pedestrian Detection	S	S	S	S	S	S	S	S	S
Following Distance Indicator	S	S	S	S	S	S	S	S	S
Side Blind Zone Alert	-	S	S	S	S	S	-	S	S
Rear Cross Traffic Alert	-	S	S	S	S	S	-	S	S
Front Park Assist	S	S	S	S	S	S	S	S	S
Rear Park Assist	S	S	S	S	S	S	S	S	S
360 degree camera	-	-	S	-	-	S	-	-	-
Rear view camera	S	S	S	S	S	S	S	S	S
Seat Belt Warning Alarm (All Seats)	S	S	S	S	S	S	S	S	S
Hill Start Assist	S	S	S	S	S	S	S	S	S
Electronic Stability Control (ESC)	S	S	S	S	S	S	S	S	S
Electric sunroof	-	-	S	-	-	S	-	-	-
2x ISOFIX Child Anchorage Points	S	S	S	S	S	S	S	S	S
Privacy Glass	-	-	-	-	-	-	-	-	S
Heated Exterior Mirrors	S	S	S	S	S	S	S	S	S
Manual folding exterior mirrors	S	-	-	-	-	-	S	-	-
Power folding exterior mirrors	-	S	S	S	S	S	-	S	S
Body Colour Door Handles	S	S	-	S	S	-	S	S	S
Body Colour Door Handles with chrome strip	-	-	S	-	-	S	-	-	-

*Option only available with V6 Engine

S Standard O Optional

	LIFTBACK LUXURY			LIFTBACK SPORT			SPORTWAGON		
	LT	Calais	Calais-V	RS	RS-V	VXR	LT	RS	RS-V
Black Window Trim	S	-	-	S	-	-	-	-	-
Chrome Window Trim	-	S	S	-	S	S	S	S	S
Rear Wiper	-	-	-	-	-	-	S	S	S
Rear Lip Spoiler	-	-	S	S	S	-	-	-	-
VXR Lip Spoiler	-	-	-	-	-	S	-	-	-
Roof Rails	-	-	-	-	-	-	S	S	S
Dual Tail Pipe	S	S	S	S	S	S	S	S	S
3.5" Driver Information Display - featuring multi-function trip computer	S	-	-	S	-	-	S	S	-
4.2" Colour Driver Information Display - featuring multi-function trip computer	-	S	-	-	-	-	-	-	-
8.0" Enhanced Driver Information Display	-	-	S	-	S	S	-	-	S
Colour Head Up Display	-	-	S	-	S	S	-	-	S
Leather Steering Wheel	S	S	-	-	-	-	S	-	-
Leather Sports Steering Wheel	-	-	S	S	S	S	-	S	S
Tilt and telescopic steering column	S	S	S	S	S	S	S	S	S
Jet Black cloth seat trim	S	-	-	-	-	-	S	-	-
Jet Black cloth/sportec trim	-	-	-	S	-	-	-	S	-
Jet Black leather-appointed seat trim	-	S	S	-	S	S	-	-	S
6 airbags	S	S	S	S	S	S	S	S	S
Steering wheel mounted audio controls	S	S	S	S	S	S	S	S	S
Sports Front Seats	-	-	S	S	S	-	-	S	S
VXR Performance Seats	-	-	-	-	-	S	-	-	-
Heated front seats	-	S	S	-	S	S	-	-	S
Ventilated front seats	-	-	S	-	-	S	-	-	-
Heated rear seats	-	-	S	-	-	S	-	-	-
8-way power adjustable drivers seat	S	S	S	S	S	S	S	S	S
4-way lumbar adjustment for driver	-	S	S	S	S	S	-	S	S
4-way manually adjustable passenger seat	S	-	-	S	S	-	S	S	S
6-way manually adjustable passenger seat	-	S	-	-	-	-	-	-	-
8-way power adjustable passenger seat	-	-	S	-	-	S	-	-	-
4-way lumbar adjustment for passenger seat	-	-	S	-	-	S	-	-	-
Massage function - driver	-	-	S	-	-	S	-	-	-
Massage function - passenger	-	-	-	-	-	S	-	-	-
Power bolsters - driver	-	-	S	-	-	S	-	-	-
Power bolsters - passenger	-	-	-	-	-	S	-	-	-
Air conditioning	S	S	S	S	S	S	S	S	S
Alloy pedals	-	-	-	-	S	S	-	-	S
Sports Mode	-	-	S	S	S	S	-	S	S
VXR Performance Mode	-	-	-	-	-	S	-	-	-
Electric park brake	S	S	S	S	S	S	S	S	S
Premium gear knob	S	S	S	S	S	-	S	S	S
VXR gear knob	-	-	-	-	-	S	-	-	-
Steering wheel mounted paddle shift	-	-	S	-	S	S	-	-	S
Rear seat pockets	-	S	S	S	S	-	-	S	S
Rear centre arm rest	-	S	S	S	S	S	-	S	S

Holden Commodore Features

S Standard O Optional

	LIFTBACK LUXURY			LIFTBACK SPORT			SPORTWAGON		
	LT	Calais	Calais-V	RS	RS-V	VXR	LT	RS	RS-V
40/60 folding rear seats	S	S	-	S	-	-	S	S	-
40/20/40 flat folding rear seats	-	-	S	O	S	S	-	-	S
One touch folding rear seats	-	-	S	O	S	S	-	-	S
Rear air-vents	S	S	S	S	S	S	S	S	S
Illuminated vanity mirror	S	S	S	S	S	S	S	S	S
Light sensitive rear view mirror	-	-	S	-	-	S	-	-	-
Floor Mats	-	-	S	-	-	-	-	-	-
VXR Floor Mats	-	-	-	-	-	S	-	-	-
Ambient Interior Lighting	-	S	S	S	S	S	-	S	S
Cargo blind	-	-	-	-	-	-	S	S	S
Advanced Park Assist	S	S	S	S	S	S	S	S	S
Hands-free power tailgate	-	-	-	-	-	-	-	S	S
Passive Entry with Push-button Start (PEPS)	S	S	S	S	S	S	S	S	S
Remote Engine Start	S	S	S	S	S	S	S	S	S
Adaptive Cruise Control (with speed limiter function)	-	-	S	-	-	S	-	-	-
Cruise Control (with speed limiter function)	S	S	-	S	S	-	S	S	S
LED Daytime Running Lights	S	S	S	S	S	S	S	S	S
LED Matrix Headlamps	-	-	S	-	-	S	-	-	-
Adaptive Forward Lighting (AFL)	-	-	S	-	-	S	-	-	-
Automatic leveling headlamps	-	-	S	-	-	S	-	-	-
Automatic High Beam Assist	-	-	S	-	-	S	-	-	-
Automatic headlamps with tunnel detection	S	S	S	S	S	S	S	S	S
Manual leveling headlamps	S	S	-	S	S	-	S	S	S
Halogen headlamps	S	S	-	S	S	-	S	S	S
Front Fog Lamps	-	S	S	-	-	-	-	-	-
Rear Fog Lamps	S	S	S	S	S	S	S	S	S
LED Tailamps	S	S	S	S	S	S	S	S	S
Rain sensing wipers	S	S	S	S	S	S	S	S	S
Power windows with express up/down function	S	S	S	S	S	S	S	S	S
Dual-zone climate control	S	S	S	S	S	S	S	S	S
Humidity sensor	S	S	S	S	S	S	S	S	S
7" colour touch-screen display	S	-	-	S	-	-	S	S	-
8" colour touch-screen display	-	S	S	-	S	S	-	-	S
Phone projection featuring Apple CarPlay® and Android® Auto	S	S	S	S	S	S	S	S	S
Embedded Satellite Navigation (GPS)	-	S	S	-	S	S	-	-	S
Bluetooth® - with audio streaming	S	S	S	S	S	S	S	S	S
Wireless phone charging for compatible devices	-	S	S	-	S	S	-	-	S
Digital radio (DAB+)	-	S	S	-	S	S	-	-	S
7-speaker audio	S	S	-	S	-	-	S	S	-
8-speaker audio	-	-	-	O	S	-	-	-	S
Bose® 8-speaker premium audio system with subwoofer	-	-	S	-	-	S	-	-	-
Single USB port - front	S	S	S	S	S	S	S	S	S
Dual USB charge points - rear	S	S	S	S	S	S	S	S	S
Active Noise Cancellation	-	-	S	-	S	S	-	-	S
Jet black headliner	-	-	-	-	-	S	-	-	-

*Option only available with V6 Engine

Holden Commodore Technical specifications

	2.0 TURBO PETROL	3.6 V6 PETROL	2.0 TURBO DIESEL
Engine Data			
Bore (mm)	86	95	83
Stroke (mm)	86	85.8	90
Displacement (cc)	1998	3649	1956
Compression ratio	9.5:1	11.5:1	16.5:1
Engine type	Inline 4-cylinder, turbocharged	V6	Inline 4-cylinder, turbocharged
Maximum power (kW)	191 @ 5500rpm	235 @ 6800rpm	125 @ 3750rpm
Maximum torque (Nm)	350 @ 3000-4000rpm	381 @ 5200rpm	400 @ 1750-2500rpm
Transmission			
Drive axle	Front wheel drive	Adaptive All-Wheel Drive	Front wheel drive
Transmission type	Automatic	Automatic	Automatic
Gear ratios			
1 st	4.69	4.69	5.25
2 nd	3.31	3.31	3.03
3 rd	3.01	3.01	1.95
4 th	2.45	2.45	1.46
5 th	1.92	1.92	1.22
6 th	1.45	1.45	1.00
7 th	1.00	1.00	0.81
8 th	0.75	0.75	0.67
9 th	0.62	0.62	-
Reverse	-2.96	-2.96	-4.02
Final drive	2.89	2.89	3.08
Chassis			
Suspension Front	MacPherson Strut	HiperStrut	MacPherson Strut
Suspension Rear	4 link Independent	5 link Independent	4 link Independent
Towing			
Capacity (kg) w/o brake	750	750	750
Capacity (kg) w/ brake	1800	2100	1800

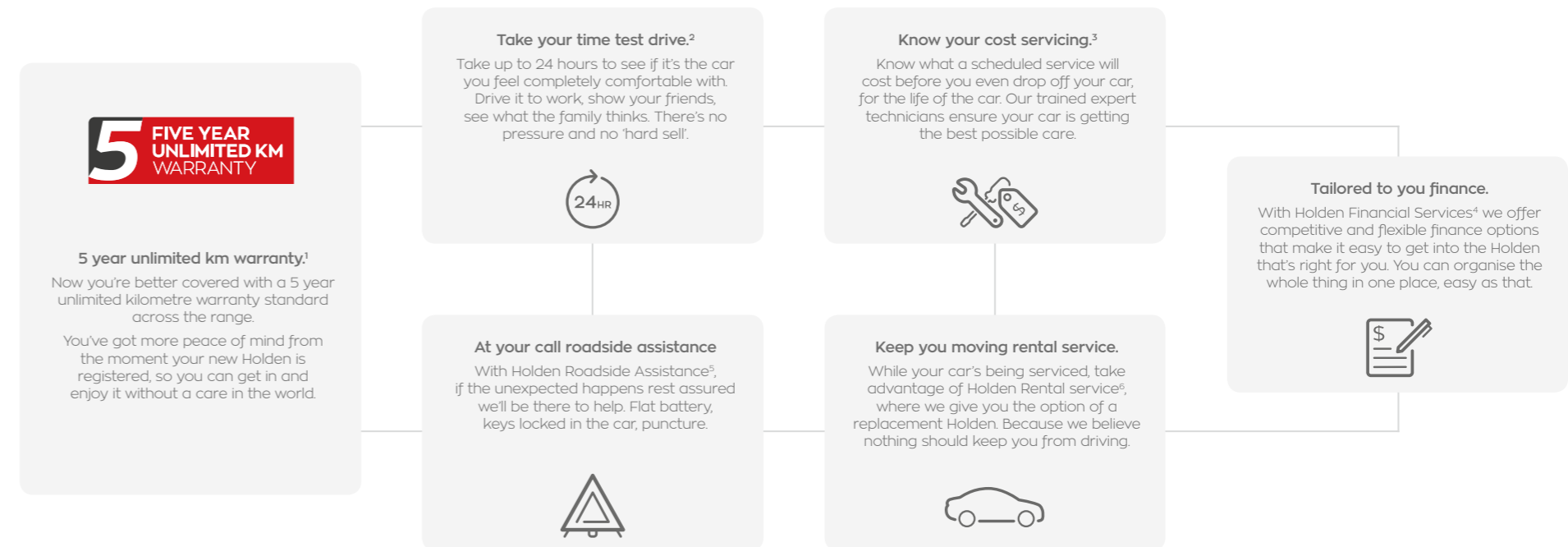
	2.0 TURBO PETROL	3.6 V6 PETROL	2.0 TURBO DIESEL
Performance			
Fuel	95 RON ULP (recommended)	91 RON ULP	Diesel
Start / Stop	Standard	Standard	Standard
Liftback			
Combined fuel consumption (L/100 km)	7.4 (LT) / 7.6 (RS, Calais)	8.9 (RS,RS-V) / 9.1 (Calais-V) / 9.3 (VXR)	5.6 (LT) / 5.8 (Calais)
CO2 emission (g/km)	169 (LT) / 173 (RS, Calais)	206 (RS,RS-V) / 212 (Calais-V) / 215 (VXR)	148 (LT) / 152 (Calais)
Wagon			
Combined fuel consumption (L/100 km)	7.7 (LT) / 7.9 (RS)	9.1 (RS-V)	5.7 (LT)
CO2 emission (g/km)	175 (LT) / 181 (RS)	212 (RS-V)	151 (LT)
Fuel tank capacity (L)	61	61	61
Emission class	Euro 6	Euro 5	Euro 6

	LIFTBACK	SPORTWAGON
Exterior Dimension		
Length (mm)	4897	4986
Width (excluding mirrors) (mm)	1863	1863
Height (mm)	1455	1483
Wheelbase (mm)	2829	2829
Track (mm) Front / Rear	1596/1599	1596/1599
Interior Dimension		
Head Room (mm) Front / Rear	985/952	994/1006
Leg Room (mm) Front / Rear	1064/938	1064/938
Cargo Volume (L) Seat-up/Folded	490/1450	560/1665
Turning circle (m)	11.14	11.14

It's the little things that add up to Holden Complete Care.

At Holden, we've been caring for Australians for more than 150 years and over that time, we've learned that it's the little things we can do for you that matter most.

Learn more at holden.com.au/completecure



¹ For new and demo vehicles registered on or after 1 July 2018. 5 year unlimited km warranty from date of first registration. Private and ABN buyers only. 5 year/200,000km warranty, whichever occurs first, for fleet, government, not-for-profit, and rental vehicles. ² Subject to Take Your Time Test Drive Terms and Conditions. See Holden.com for details. ³ Subject to Know Your Cost Service terms and conditions. See Holden.com.au for details and to obtain a quote. ⁴ Holden Financial Services is a registered trademark of General Motors LLC and is used under sub-licence by St. George Bank - A Division of Westpac Banking Corporation Limited ABN 33 007 457 141 AFSL and Australian Credit Licence 233 714. Finance to approved applicants, subject to suitability. Credit criteria, fees, charges and terms and conditions apply. ⁵ Subject to Holden Roadside Assistance Terms and Conditions. See Holden.com for details. ⁶ Subject to Holden Rental Terms and Conditions. See Holden.com for details.



Cover image: Commodore VXR Liftback in Cosmic Grey

A word about this brochure. We have tried to make this brochure as comprehensive and factual as possible. However, since the time of printing some of the information you'll find here may have been updated. Also, some of the equipment shown or described through this brochure may have been changed and/or is available at extra cost. Further, General Motors Holden Australia NSC Ltd ABN 60 603 486 933 (Holden), reserves the right to make changes at any time without notice, in prices, colours, materials, equipment and models. Your Holden Dealer has details, and before ordering, you should ask them to bring you up to date. No Holden Dealer or other person is authorised or permitted to give or make any statement, assertion or undertaking in relation to the quality, performance characteristics, descriptions or fitness for any purpose of any Holden product which is at variance with any written statement, assertion or undertaking on any of these subjects given or made by Holden in its published sales literature, and Holden does not accept any liability for any such unauthorised action. Details also available from Holden on request. Copyright Holden. HBR3271. July 2018. AD13818.



Holden
Let's go there