

# 1840 Gateway Drive San Mateo, California

HOME

HIGHLIGHTS

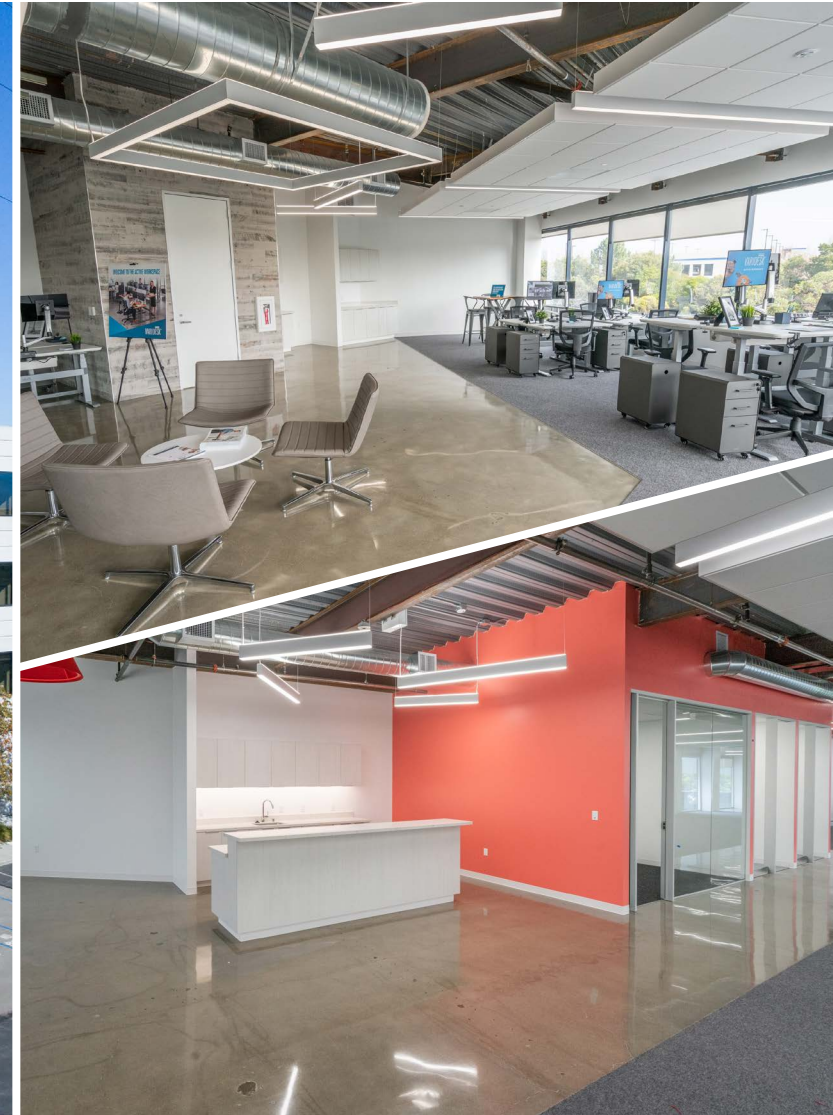
AVAILABLE

AMENITIES

TRANSPORTATION

CONTACT US

**360°** CLICK TO VIEW  
360° INTERACTIVE TOUR



**Clarke Funkhouser**  
Executive Managing Director  
+1 650 401 2124  
clarke.funkhouser@cushwake.com  
LIC #01252763

**Gary Boitano**  
Managing Director  
+1 650 401 2122  
gary.boitano@cushwake.com  
LIC #01902693

View Site Specific  
**COVID-19**  
PREVENTION PLAN

1350 Bayshore Highway, Suite 900  
Burlingame, CA 94010  
Main +1 650 347 3700  
Fax +1 650 347 4307  
[cushmanwakefield.com](http://cushmanwakefield.com)

# 1840 Gateway Drive San Mateo, California

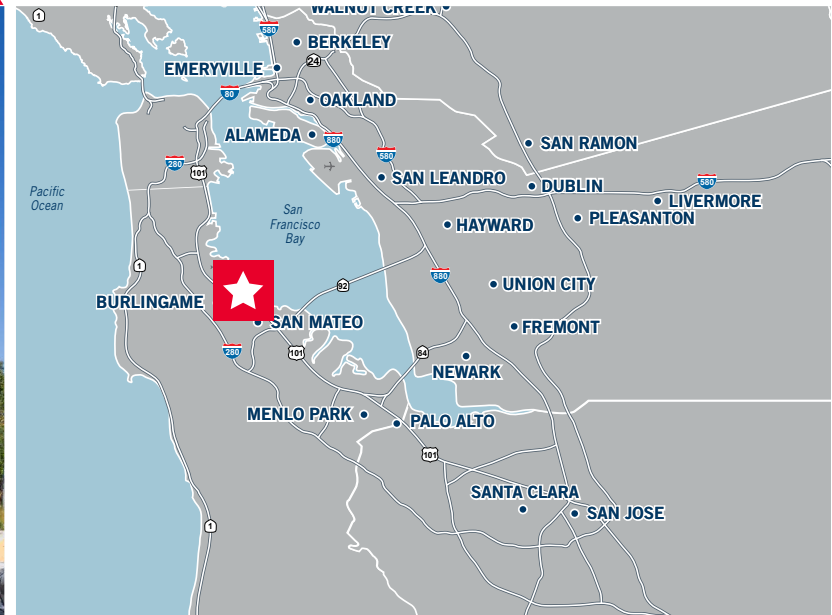
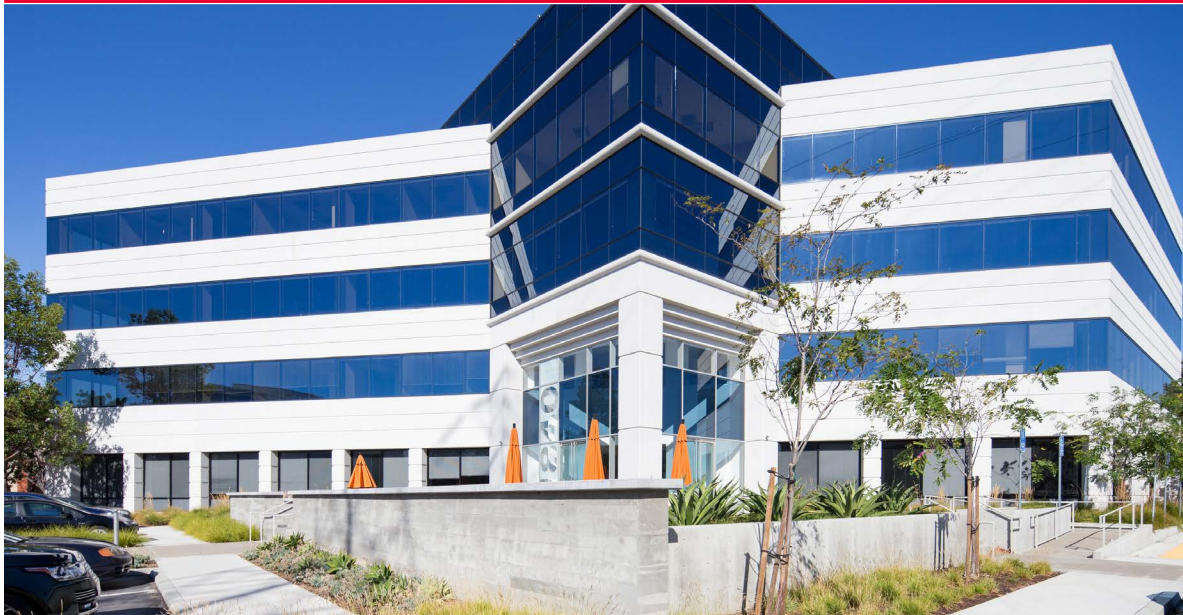
HOME / HIGHLIGHTS / AVAILABLE / AMENITIES / TRANSPORTATION / CONTACT US

## Property Highlights:

- High Identity Class A Office Availability
- Outstanding On-building Freeway visible Signage
- Restaurants, shopping, banks and more within Walking Distance
- Convenient Access to three Bay Area Airports - 15 Minutes to San Francisco International Airport, 30 Minutes to San Jose International Airport, 35 minutes to Oakland International Airport
- Excellent Views
- Recently Upgraded Fitness Center  
*Click here for 360° View!*
- 10 EV Charging Stations
- CalTrain Shuttle Available
- New Ownership
- Call to Tour

**360° VIEW 360° TOUR  
FITNESS CENTER**

**360° VIEW 360° TOUR  
LOBBY**



**Clarke Funkhouser**  
Executive Managing Director  
+1 650 401 2124  
clarke.funkhouser@cushwake.com  
LIC #01252763

**Gary Boitano**  
Managing Director  
+1 650 401 2122  
gary.boitano@cushwake.com  
LIC #01902693

1350 Bayshore Highway, Suite 900  
Burlingame, CA 94010  
Main +1 650 347 3700  
Fax +1 650 347 4307  
[cushmanwakefield.com](http://cushmanwakefield.com)



# 1840 Gateway Drive

San Mateo, California

HOME

HIGHLIGHTS

AVAILABLE

AMENITIES

TRANSPORTATION

CONTACT US

## Available:

Suite Number	Square Footage
--------------	----------------

**Suite 225** ±5,242 SF  
[Click here for 360° View!](#)

[Click Suite Number to View Floor Plan](#)



**Clarke Funkhouser**  
Executive Managing Director  
+1 650 401 2124  
clarke.funkhouser@cushwake.com  
LIC #01252763

**Gary Boitano**  
Managing Director  
+1 650 401 2122  
gary.boitano@cushwake.com  
LIC #01902693

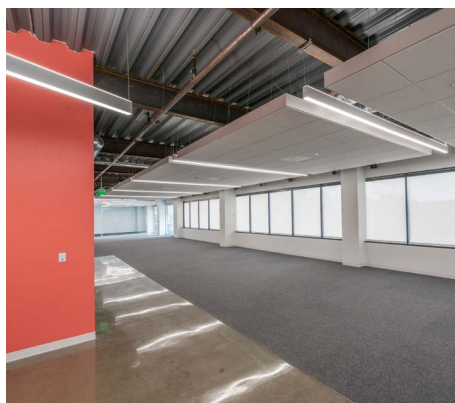
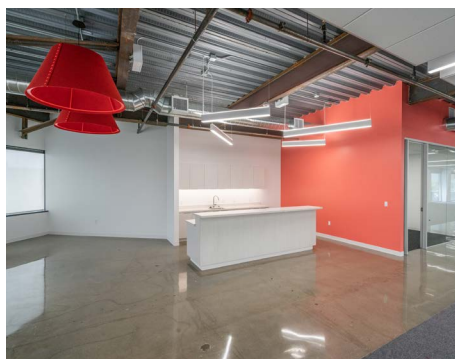
1350 Bayshore Highway, Suite 900  
Burlingame, CA 94010  
Main +1 650 347 3700  
Fax +1 650 347 4307  
[cushmanwakefield.com](http://cushmanwakefield.com)

# 1840 Gateway Drive San Mateo, California

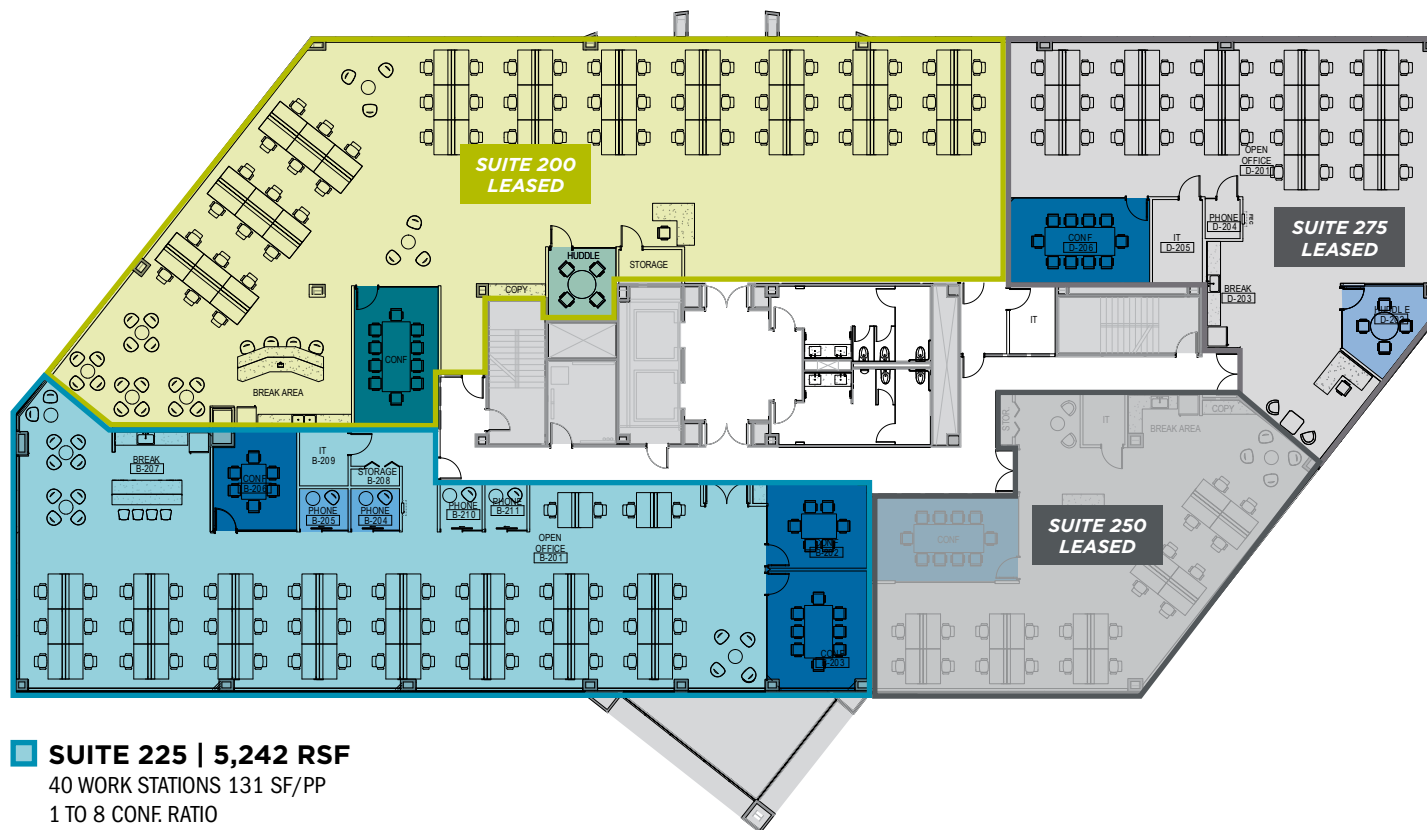
HOME / HIGHLIGHTS / AVAILABLE / AMENITIES / TRANSPORTATION / CONTACT US

## 2nd Floor

CLICK TO VIEW SUITE 225  
360° INTERACTIVE TOUR 



**SUITE 200 | 6,789 RSF**  
CURRENTLY ON THE SUBLEASE MARKET.



**SUITE 225 | 5,242 RSF**  
40 WORK STATIONS 131 SF/PP  
1 TO 8 CONF RATIO



**Clarke Funkhouser**  
Executive Managing Director  
+1 650 401 2124  
clarke.funkhouser@cushwake.com  
LIC #01252763

**Gary Boitano**  
Managing Director  
+1 650 401 2122  
gary.boitano@cushwake.com  
LIC #01902693

1350 Bayshore Highway, Suite 900  
Burlingame, CA 94010  
Main +1 650 347 3700  
Fax +1 650 347 4307  
[cushmanwakefield.com](http://cushmanwakefield.com)



# 1840 Gateway Drive San Mateo, California

HOME / HIGHLIGHTS / AVAILABLE / AMENITIES / TRANSPORTATION / CONTACT US

## Amenities

### RESTAURANTS

ABC Seafood Restaurant	Outback Steakhouse
Baja Fresh	Armadillo Willy's
Carl's Jr.	BJ's Restaurant & Brewery
Daphne's	The Carvery
Fish Market	El Torito
Harry's Hofbrau	Green Burrito
McDonald's	Jamba Juice
Noah's Bagels	Mimi's Cafe
Corner Bakery	Pasta Pomodoro
Peet's Coffee	Shiki
Red Robin	Taco Bell
Starbucks	

### ENTERTAINMENT

Mariners Point Golf Links	Ice Chalet
---------------------------	------------

### RETAIL

Bed Bath & Beyond	Ethan Allen
Home Depot	Longs Drugs
Marshalls	Old Navy
Orchard Supply Hardware	Pier 1 Imports

### RETAIL

Safeway at Metro Center	Sports Authority
Target	Whole Foods at Bay Meadows

### BANKS

Wells Fargo Bank	Bank of America
------------------	-----------------

### HOTELS

Crowne Plaza	Hilton
Courtyard by Marriott	Hilton Gardens
Homestead Village	Residence Inn
Marriott San Mateo	

### HEALTH CLUBS

24 Hour Fitness	Foster City Athletic Club
Peninsula YMCA	Jewish Community Center

SAMPLING OF THE SURROUNDING AMENITIES AND CORPORATE BUSINESSES



# 1840 Gateway Drive San Mateo, California

HOME / HIGHLIGHTS / AVAILABLE / AMENITIES / **TRANSPORTATION** / CONTACT US

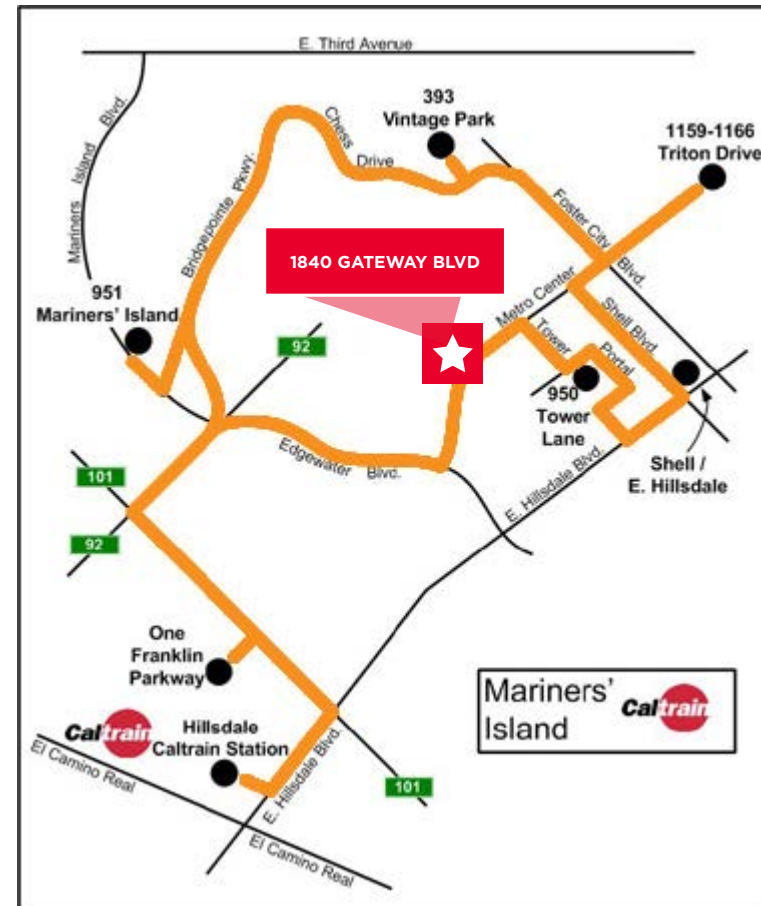
## Transportation



### CALTRAIN WEEKDAY SHUTTLE SERVICE

#### SAN MATEO CENTRE CALTRAIN SHUTTLE

HILLSDALE STATION	SM CENTRE	SM CENTRE	HILLSDALE STATION
6:56 am	7:09 am	3:09 pm	3:39 pm
7:45 am	7:58 am	3:52 pm	4:23 pm
8:25 am	8:38 am	4:35 pm	5:06 pm
9:07 am	9:20 am	5:18 pm	5:49 pm
9:49 am	10:02 am	6:01 pm	6:32 pm



**Clarke Funkhouser**  
 Executive Managing Director  
 +1 650 401 2124  
 clarke.funkhouser@cushwake.com  
 LIC #01252763

**Gary Boitano**  
 Managing Director  
 +1 650 401 2122  
 gary.boitano@cushwake.com  
 LIC #01902693

1350 Bayshore Highway, Suite 900  
 Burlingame, CA 94010  
 Main +1 650 347 3700  
 Fax +1 650 347 4307  
[cushmanwakefield.com](http://cushmanwakefield.com)



# 1840 Gateway Drive

San Mateo, California

HOME

HIGHLIGHTS

AVAILABLE

AMENITIES

TRANSPORTATION

CONTACT US

## Contact Us:

### Clarke Funkhouser

Executive Managing Director  
+1 650 401 2124  
clarke.funkhouser@cushwake.com  
LIC #01252763

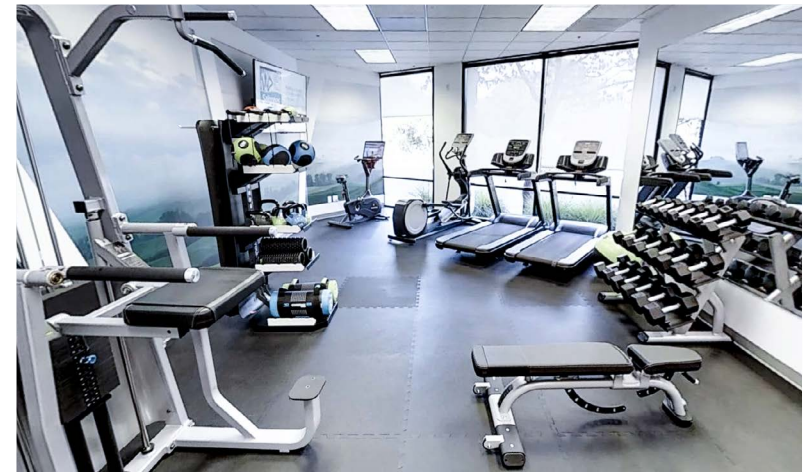
### Gary Boitano

Managing Director  
+1 650 401 2122  
gary.boitano@cushwake.com  
LIC #01902693

## Cushman & Wakefield

Cushman & Wakefield (NYSE: CWK) is a leading global real estate services firm that delivers exceptional value for real estate occupiers and owners. Cushman & Wakefield is among the largest real estate services firms with approximately 50,000 employees in 400 offices and 60 countries. In 2020, the firm had revenue of \$7.8 billion across core services of property, facilities and project management, leasing, capital markets, valuation and other services.

To learn more, visit [www.cushmanwakefield.com](http://www.cushmanwakefield.com) or follow @CushWake on Twitter.



### Clarke Funkhouser

Executive Managing Director  
+1 650 401 2124  
clarke.funkhouser@cushwake.com  
LIC #01252763

### Gary Boitano

Managing Director  
+1 650 401 2122  
gary.boitano@cushwake.com  
LIC #01902693

1350 Bayshore Highway, Suite 900  
Burlingame, CA 94010  
Main +1 650 347 3700  
Fax +1 650 347 4307  
[cushmanwakefield.com](http://cushmanwakefield.com)