



Home Technology  
Integrated by Design™



# Table of Contents

---

- 2** Map Tour
- 4** Shading Solutions
- 6** Crestron Studio– Home Designer™
- 8** Touch Screens & Remotes
- 18** Crestron Control for iPad® & XPanel
- 20** 3-Series™ Control Systems
- 26** Networking
- 28** Speakers
- 32** Audio & Video Solutions
- 44** DigitalMedia™
- 54** HDMI® Essentials
- 56** Lighting Control
- 64** Climate Control
- 66** Energy Management
- 68** Keypads

# Introduction

---

## Integrated by Design™

For more than 40 years Crestron has been the world's leading manufacturer of advanced control and automation systems, providing complete home technology solutions that simplify and enhance any lifestyle. Our integrated approach enables users to control TV, movies, and music, as well as view and adjust lighting levels, room temperature, shade positions, and security status – anytime, anywhere.

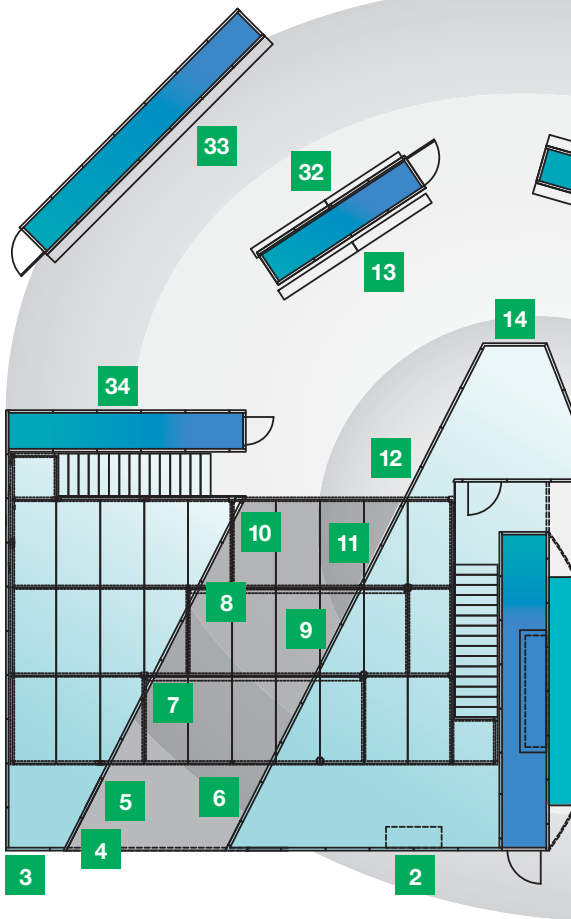
This year, we're raising the bar on integrated home technology with major new product introductions in our biggest booth ever at CEDIA EXPO.

All-new **Crestron Studio - Home Designer™** combines programming, GUI design, network configuration, and engraving into one unified environment. Backward compatible with existing Crestron projects, it keeps basic control programming easy, and makes advanced customized programming easier. It's, quite simply, the application you've been waiting for, enabling you to consistently complete jobs faster and exceed client expectations.

With the launch of our new line of silent motorized shades, we now provide complete light management solutions for any environment. **Crestron Shading Solutions** are Integrated by Design™ to work seamlessly with Crestron lighting control, entertainment, climate, and security to deliver the best home automation experience. Come visit our shade exhibit to see all of our roller shades, Roman shades, drapery track systems, as well as our exclusive mounting hardware and accessories.

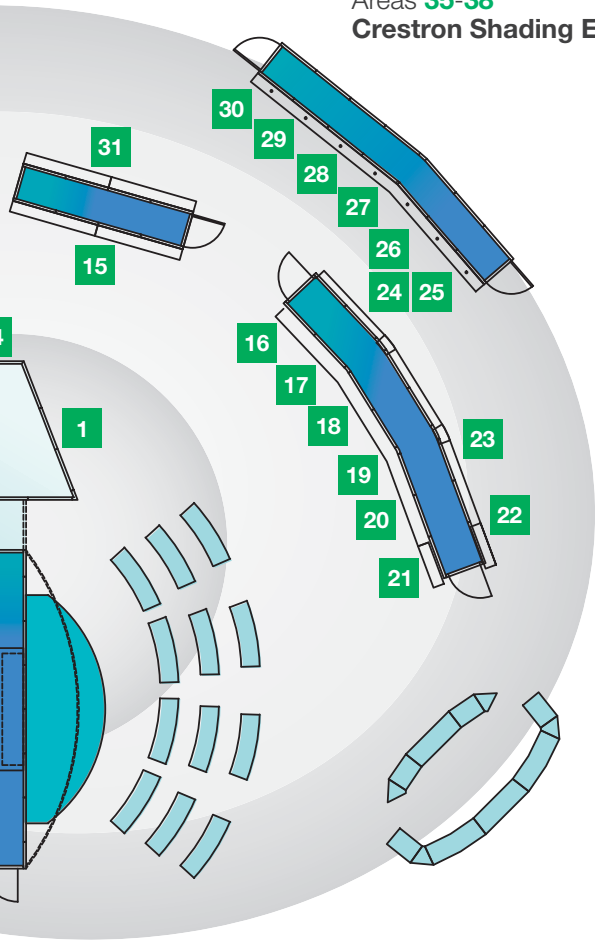
And that's just the start. We're demonstrating what's new in 3-Series™ control systems, audio/video, home control with iPad®, touch screens, and more in our 14,000 square foot exhibition space. We've got a few surprises, too. We're integrating new technologies, such as NFC and Airplay®, to create the most amazing home automation experience in the world. **Crestron airConnect™** is an NFC-based technology embedded into Crestron products, so clients simply wave their smart phone to activate personal settings in any space throughout the home. You'll definitely want to check this out!

# Maps



- 1 Core 3 UI™ Multi-touch experience
- 2 HD Gaming & Home Sports Bar
- 3 Home Entrance
- 4 Foyer
- 5 Living Room
- 6 Living Room Window
- 7 Kitchen
- 8 Theater
- 9 Theater Window
- 10 Bedroom
- 11 Bedroom Window
- 12 Outdoor
- 13 3-Series Control Systems & Power over Ethernet Switches
- 14 Keypads
- 15 Crestron Control with iPad®
- 16 Touch Screens
- 17 HD Video Display
- 18 Whole House Control
- 19 Designer Series
- 20 Wireless Technology

Areas **35-38**  
**Crestron Shading Exhibit**



- 21** New Touch Screens
- 22** Sonnex™
- 23** Speakers
- 24** PROCISE™ 7.3 HD Surround Sound Home Theater System
- 25** Crestron DigitalMedia™ - Wall Plates
- 26** Crestron DigitalMedia™ - HDMI Essentials
- 27** Crestron DigitalMedia™ - Transmitters & Receivers
- 28** Crestron DigitalMedia™ - Wide range of switchers
- 29** Small Fixed Matrix Switchers
- 30** Mid-size & Large Modular Matrix Switchers
- 31** Lighting Control
- 32** Energy Management
- 33** Crestron Studio™ - Home Designer Software
- 34** Amazing New Graphics: Design Once - Use Everywhere
- 35** Shade Exhibit
- 36** Shade Brackets and Accessories
- 37** Interactive Displays
- 38** Shading Concierge Services

# Shading Solutions

## Shhhshades — Featuring the Quietest Motors You'll Never Hear

Crestron Shading Solutions are Integrated by Design™ to work seamlessly with electric lighting, AV, climate and security systems to deliver a complete home control and energy management solution. Crestron now offers a complete line of quiet motorized roller shades, Roman shades and drapery track systems with designer-inspired fabrics and hardware finishes that match any décor.

Featuring the new low voltage Quiet Motor Technology™ (QMT™), Crestron shades are silent, operate smoothly and combine control of electric light and daylight from touch screens, keypads, remotes and Apple® or Android™ smart devices. Crestron delivers a variety of user-interfaces and features including backlit, custom-engraved buttons for highly visible, intuitive operation and user-programmable preset buttons for immediate recall of a favorite light level or shade position.

To address any installation or décor, Crestron offers a complete selection of roller shade hardware in the Architectural, Designer Cassette, and Décor series. Designers can choose from more than 400 different fabrics from our Heritage and Designer collections to achieve the desired appearance and functionality, providing precise control over light filtering, solar heat gain and privacy using transparent, translucent and blackout materials.





## **NEW!** Crestron® Shading Solutions

- + A complete line of shading and drapery systems
- + Integrated by Design™ for easy wiring and programming with all Crestron control systems including lighting, climate, music, TV, and security
- + Over 400 fabric options
- + Customer's Own Material (COM) Program for Roman Shades
- + Crestron® Quiet Motor Technology™
- + Smooth, silent starts and stops
- + Maximum window coverage with the smallest possible light gaps
- + Programmable stop points
- + Grouping requires no special controls or relay systems
- + Power failure memory for the lifetime of the product
- + Easy low-voltage wiring scheme
- + All-in-one software tool for designing, quoting and ordering
- + 8 year limited warranty
- + Backed by expert-level Crestron field service engineers and 24/7 technical and customer support

# Crestron Studio™ – Home Designer

## GUI Development and System Programming – Unified, Simplified, & Speedified!

**Developed with you in mind** — Crestron Studio is the new software environment you will love to use every day for the design and programming of Crestron control systems and touch screen GUIs. Crestron Studio puts **everything a programmer or GUI developer needs under one unified platform**. It features an entirely new, cleaner, more intuitive layout to streamline your workflow. Everything is faster and easier, allowing you to **be more efficient and more productive** while delivering amazing graphics and the best user experience.



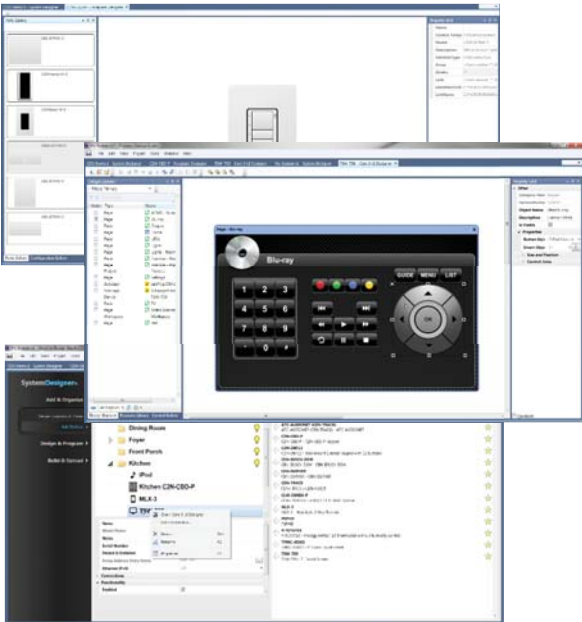
**Crestron Studio™**  
HOME DESIGNER

### **NEW! Crestron Studio - Home Designer™** Unified Programming and GUI Design Software

- + Programming, GUI design, engraving, device setup and network configuration — all in one application!
- + SmartObjects™, such as media player, are dynamic and reusable – one object; one join number for the entire project
- + Backward compatible with 2-Series and 3-Series™ SIMPL programs, user drivers, and Core 3 UI™ objects
- + Smart Sizing™ automatically scales and positions the graphics perfectly on every size screen regardless of resolution to provide a consistent and amazing user experience.
- + Universal Uploading™ enables projects to compile and upload to all touch screens, mobile devices and computers at the same time
- + Select from library of themes or create custom components and themes. Reuse as often as you like – change on the fly without redrawing or reprogramming.
- + Substantially faster, more efficient project development means higher productivity for the dealer and greater value for the customer
- + Retains existing concepts for easy adoption, but in a new, cleaner work environment



- ✦ Speedier, more consistent usability with global keyboard shortcuts, speed keys, and favorites
- ✦ No need to manually match join numbers and .ced files
- ✦ Jump effortlessly between views or drag any tab to a second monitor for multi-screen view
- ✦ Use smooth zooming to zero-in on specific details
- ✦ Many additional enhancements for easier, faster programming and debugging
- ✦ Directly launch setup tools for Sonnex™, PROCISE®, DM®, etc.
- ✦ Auto-discovery of Crestron device serial numbers and addressing
- ✦ Automatic updates — no need to manually download multiple applications and databases
- ✦ Harnesses the power of multi-core processors and multithreading



## Touch Screens & Remotes

### **Core 3 UI™ — the New Tool for Cool!**

The new Core 3 UI platform makes it easier than ever to deliver a rich user experience with amazing touch screen graphics.

**Core 3 UI increases “wow” factor while reducing time and effort**, making the ultimate Crestron touch screen experience an excellent value, as well.



Core 3 UI supports multiple Flash® and HTML5 graphics and animations, H.264 streaming video, Web browsing – all at the same time. All these technologies combine to deliver a dynamic, interactive user experience that will impress any client. Core 3 UI designs run on the latest Crestron touch screens, popular smart phones and tablets, and on Mac® and PC computers, so clients enjoy a consistent user experience across all platforms and devices.

# CORE **B** UI™

## Silky Smooth and Packed with Power

The new TSW-550, 750 and 1050 offer powerful Core 3 UI™ graphics in a **choice of three space-efficient surface mount designs. Each features an edge-to-edge capacitive touch surface**, H.264 streaming video, Rava™ SIP intercom, single-wire PoE/PoE+ connectivity, and standard gang-box installation.



### **NEW! TSW-550, TSW-750 & TSW-1050** Surface Mount Touch Screens

- + Ultra clean, modern appearance
- + Thin profile and small footprint
- + Affordable and easy to install
- + 5", 7", and 10" widescreen color displays
- + Core 3 UI™ graphics
- + Capacitive touch screen technology
- + High-performance H.264 streaming video
- + Rava™ SIP intercom and phone technology
- + Customizable audio feedback
- + Built-in microphone and speakers
- + 5 soft-touch capacitive buttons
- + Single-wire Ethernet connectivity
- + PoE network powered (PoE+ for TSW-1050)
- + Standard electrical wall box mounting
- + Available in smooth black or white finish
- + Available tabletop and flush wall mount options

## Touch Screens & Remotes

### Award-Winning Ergonomics, All New Experience

The new TST-600 adds the power of Core 3 UI™ to our best-selling TPS-6X Wireless Touch Screen, providing **a whole new user experience** in a slick-looking portable design.



#### **NEW!** TST-600 5.7" Wireless Touch Screen

- + Lightweight contoured design
- + 5.7" color display
- + **NEW!** Core 3 UI™ graphics
- + **NEW!** Capacitive touch screen technology
- + **NEW!** Wi-Fi and Extended Range 2.4 GHz RF wireless technologies
- + **NEW!** Extended battery life - Lithium-ion technology
- + **NEW!** High-performance H.264 streaming video\*
- + **NEW!** Rava SIP intercom and phone technology\*
- + **NEW!** Customizable audio feedback
- + Illuminated buttons and engravable backlit text
- + No-button front bezel option included
- + Instant-Waking® behavior
- + Wired Ethernet connectivity while docked
- + Choice of low-profile tabletop and in-wall docking stations
- + Fits all existing TPS-6X docking options (does not support wired analog video or Cresnet®)
- + Smooth black or white, or textured black finishes

\* Requires Wi-Fi® or wired Ethernet connection.

## Small Size, Big Performer

At a very affordable cost, the TPMC-3SMD affords total control over audio, video, lighting, and other functions — all in the space of a light switch.



### **NEW!** TPMC-3SMD 2.8" Wall Mount Touch Screen

- + Modern, contoured appearance
- + Thin profile and small footprint
- + Affordable and easy to install
- + Quick-access pushbuttons
- + Single-wire Ethernet connectivity
- + PoE network powered
- + Single-gang wall box mountable
- + Available in smooth black or white

# Touch Screens & Remotes

## “Go Anywhere” Touch Screen Control

The TPMC-4SMD makes an elegant statement wherever you put it. A complete set of mounting options are offered for installation over a standard electrical box, placed on a table top, or attached to **any flat surface — even glass, granite, marble, or concrete.**



### TPMC-4SMD 4.3" Wall Mount Touch Screen

- + Versatile wall, surface, and tabletop mounting options
- + 4.3" widescreen color touch screen
- + Crestron IP intercom
- + Customizable audio feedback
- + Built-in microphone and speaker
- + Built-in proximity sensor
- + 10 optional “hard key” pushbuttons
- + Custom engravable button text
- + Room occupancy sensor option
- + Single-wire Ethernet connectivity
- + PoE network powered
- + Black or white smooth finish

## Rava™ SIP Intercom & Phone — Talk To Me!

Rava SIP Intercom Technology enables **hands-free VoIP communication** between any two Rava-enabled Crestron touch screens. Rava works over Ethernet, supporting 2-way intercom, paging, and room monitoring without any special wiring. VoIP phone capability is also possible through integration with a SIP-compatible IP phone system or SIP server, allowing hands-free telephone functionality with speed-dialing, caller ID, custom ringers, and other enhancements.

The TPMC-4SMD-FD packs the power of Core 3 UI™ with Rava SIP Intercom technology to deliver **a total room control solution with the added capabilities of a hands-free phone or intercom station**. Built-in echo cancellation affords **true-duplex performance for clear, seamless voice communication**.



### TPMC-4SMD-FD 4.3" Touch Screen w/Rava™

- + 4.3" widescreen color touch screen
- + Core 3 UI™ graphics
- + High-performance H.264 streaming video
- + Rava™ SIP intercom and phone technology
- + Built-in microphone and speaker
- + Customizable audio feedback
- + Built-in proximity sensor
- + 10 optional "hard key" pushbuttons
- + Custom engravable button text
- + Room occupancy sensor option
- + Single-wire Ethernet connectivity
- + PoE network powered
- + Surface mount over a wall box or 2" square hole
- + Black or white smooth finish

## Touch Screens & Remotes

### Big Touch Screens with Big Performance and VESA Mount Versatility



vpanel™

A sleek design, **High-Definition Core 3 UI™ graphics**, embedded multimedia and Web browsing, and VESA mount capability make V-Panel™ touch screens our most powerful, versatile, and visually appealing large format touch screens ever. **V-Panels™ can be custom mounted using off-the-shelf display brackets and telescoping arms.** They can be mounted flush in a wall or cabinet. Or, they can simply be placed on a table or countertop.

V-Panels offer **the ultimate HD touch screen experience** for luxury homes, boardrooms, hotels, night clubs and restaurants, auditoriums, houses of worship, and much more. Choose a TPMC-V 12" or 15" Integrated HD touch screen with **H.264 streaming and composite video**, or choose the V12, V15, or V24R-C with **DigitalMedia™ connectivity and multi-window HDMI® and analog source display.**



V24R-C



## **TPMC-V12 & TPMC-V15**

### **V-Panel™ Integrated HD Touch Screens**

- + 15" widescreen or 12" color touch screen
- + High-definition Core 3 UI™ graphics
- + Onboard PC applications for Web browsing, playing digital media, and viewing digital documents
- + High-performance H.264 streaming video
- + Wired composite video input
- + Crestron IP intercom
- + Remote annotation
- + Customizable audio feedback
- + Supports onscreen or external USB keyboard and mouse
- + High-Speed Ethernet and Cresnet®
- + Tabletop, in-wall, and VESA-compatible mounting options
- + Available in white or black

### **V12 & V15 V-Panel™ HD Touch Screen Displays**

- + Same features, appearance and mounting options as TPMC-V
- + Works with the DGE-2 Digital Graphics Engine or DVPHD Digital Video Processor
- + DigitalMedia™ technology enhances system configurability
- + Allows multi-window display of HDMI®, VGA, component and H.264 video sources
- + Allows annotation over live video images
- + Fully HDCP compliant

## **NEW! V24R-C**

### **V-Panel™ 24" HD Touch Screen Display**

- + Provides a high-definition video display, computer monitor, and annotator with advanced Crestron® touch screen control
- + Rich, accurate color reproduction and high-speed response
- + Ultra-wide 178 degree viewing angles
- + 1920 x 1200 WUXGA display resolution
- + High-Definition Core 3 UI™ graphics
- + Works with the DGE-2 or DVPHD
- + DigitalMedia 8G+™ technology reduces wiring and enhances system configurability
- + Multi-window display of HDMI® and other video sources
- + Built-in HD scaler enables full-screen video without a DGE
- + VESA mount, lectern, or flush wall mount options
- + Available in white or black

## Touch Screens & Remotes

### Goes Where No Remote Has Gone Before

This feature-packed waterproof remote offers advanced wireless control capabilities in a fully-submersible package that's resistant to chlorine and salt water. **It is perfect for use around the pool, in the shower or hot tub, or on a yacht.** The optional weather-proof docking station keeps the UFO securely in place while charging through high winds and rough seas.



### **NEW! UFO-WPR-3ER**

#### UFO Waterproof Wireless LCD Remote

- + Waterproof handheld remote w/color LCD display
- + Ideal for use around the pool or hot tub, in the bath or shower, or on a boat or yacht
- + Floats on top of the water's surface, immersible to 10 feet
- + Safe for use in chlorinated and salt water environments
- + Rubberized exterior won't slip from your grip
- + Included wrist lanyard keeps your remote at hand
- + Includes indoor desktop docking station
- + Optional outdoor docking station holds remote securely at any angle and wind speeds up to 55 mph (47.8 kn)
- + Features a 2.8" active-matrix color LCD display and intuitive menu-driven user interface
- + Provides true-feedback with dynamic text capability
- + Displays full-color icons and status indicators
- + Tactile buttons for common functions and menu navigation
- + Extended Range 2.4 GHz RF wireless technology allows up to 200 feet RF range indoors, 1000 ft outdoors
- + Instant-Waking<sup>®</sup> behavior — works like an IR remote with all the benefits of 2-way RF!
- + Efficient operation extends use between charges

## Low-cost infiNET EX® Remote with Color Display

The MLX-3 provides intuitive control for the entire house through **a brilliant user interface that's simple to use — and just as simple to configure**. Featuring customizable scrolling menus and full-color icons, the MLX-3 makes it easy to select your room, pick a media source, choose a radio station, TV channel, or media title, and even access lighting and other environmental controls — all without having to flip through endless confusing pages of static buttons.



### MLX-3 Color LCD Handheld Wireless Remote w/infiNET EX®

- + Rugged and ergonomic handheld design
- + 2" active matrix color LCD display
- + Intuitive menu-driven user interface
- + Easy scroll wheel navigation
- + True-feedback and dynamic text capability
- + Full-color icons and status indicators
- + Text search capability via multi-tap keypad
- + Smooth, responsive hard buttons
- + Adjustable backlit button text
- + Ultra-reliable infiNET EX wireless communications
- + 75 feet RF range (typical)
- + Easy range extension using infiNET EX expanders
- + Instant-Waking® behavior
- + Works like an IR remote — with all the benefits of 2-way RF!
- + Powered by 4 AA lithium or alkaline batteries

# Crestron Control for iPad® & XPanel

## Crestron Mobile Pro® — The Ultimate Mobile Touch Screen Experience



Crestron Mobile Pro — **the industry's most full-featured mobile control app** — puts complete control at your fingertips from more places through more devices. Using any **Apple® iOS or Android™ smart phone or tablet**, Crestron Mobile Pro lets you control all the technology in your home or business using the one device that goes with you everywhere.



### Crestron Mobile Pro®

Control App for Apple® iOS and Android™

- + Compatible with Apple® iPhone®, iPad®, iPod touch®, and all Android™ devices
- + One project works across multiple platforms and resizes automatically to fit any screen
- + Provides an extensively customizable user interface
- + Enables control of lights, media, climate, security and more
- + Affords full system control with real-time status feedback and metadata
- + Allows viewing of live streaming cameras and video servers
- + Supports automatic screen rotation and swipe gestures
- + Includes a large library of built-in graphics
- + **NEW!** Horizontal scrolling and dynamic scrolling lists
- + **NEW!** Launch or be launched by third-party apps such as media players, Internet radio, and cable TV apps
- + Full integration with Crestron programming software
- + Allows control of multiple Crestron systems from one device
- + Communicates directly with a Crestron control system via Wi-Fi or mobile data network
- + No special server or 3rd-party service required
- + **NEW!** SSL secure communication
- + Add or upgrade devices without a service call
- + Paid and free versions available

## iPanel™ Docking Stations

Transform any iPad into a stationary Crestron touch screen with these stylish docking stations.



### IDOC-PAD-DSWC AND IDOC-PAD-DSC iPanel™ Docking Stations for iPad®

- + In-wall and tabletop models available
- + Allows for easy docking and undocking
- + Charges the iPad while docked
- + **NEW!** Locking in-wall model for fixed installations
- + Available in white or black

## e-Control® XPanel — Powered by Core 3™

Crestron was the first to offer an IP-based remote control solution, letting homeowners monitor and manage virtually anything in the house over their home network and the Internet. Today's Core 3 UI™ based XPanel technology affords an incredibly robust IP control platform to deliver **advanced virtual touch screen control through any popular Web browser**, or as a desktop application, whether running on a Mac® or Windows® PC. Core 3 UI XPanel capability is supported by every 3-Series Control System®.



# 3-Series™ Control Systems

## Integrated by Design™ At Its Core



Crestron 3-Series Control Systems form the core of any modern home or business, integrating and managing disparate technologies for **a lifestyle that's more enjoyable, productive, efficient and convenient.** 3-Series Control Systems can dramatically **reduce energy usage**

**and operational costs** as part of a complete integrated energy management solution.

3-Series Control Systems are engineered from the ground up to deliver **increased processing power and speed** with more memory, rock solid networking and IP control, and a unique **modular programming architecture.**

The new system architecture makes system programming, updating and troubleshooting much faster and easier. Up to ten systems, such as lighting, AV, security, and climate, can be programmed separately, but operate together at the same time for maximum efficiency. Built-in BACnet/IP support ensures powerful, seamless integration with commercial-grade security and HVAC systems.

3-Series embodies a distinctively robust, dynamic, and secure platform **to elevate your system designs to higher levels of performance and reliability.**

**NEW!** for CEDIA EXPO 2012, **a total of six 3-Series Control System® models** are now offered. It all started with the MC3, which now features **built-in OSD control capability.** The rack-mountable CP3 gets three new siblings: the CP3N, AV3, and PRO3. Finally, **the TPCS-4SMD combines a 3-Series control processor and touch screen controller in one,** affording complete room control at an incredible price — and no equipment rack required!

## PRO3 — The New Flagship

The PRO3 sets the **new standard for control system performance and functionality.** Featuring the mega-accelerated performance of the Core 3 OS™ engine, a color LCD front panel, and the new Control Subnet port providing a **dedicated Gigabit Ethernet network just for Crestron devices, PRO3 is the most advanced control system available in the industry.**



## **NEW!** PRO3 3-Series Control System®

- + Next generation control system
- + Substantially faster and more powerful than other control systems
- + Exclusive modular programming architecture
- + Vector floating point coprocessor
- + Onboard 1GB RAM & 4GB Flash memory
- + Expandable storage up to 1TB
- + Rear panel MMC memory card slot
- + High-speed USB 2.0 host port
- + **NEW!** Control Subnet — provides a dedicated local network for Crestron® devices
- + Onboard e-Control® Web server
- + Supports Core 3 UI™ XPanel Web-based remote control
- + Supports Crestron Mobile® control apps for iPhone®, iPad® and Android™
- + Supports Fusion RV™ and SNMP remote management
- + **NEW!** Native BACnet®/IP support
- + Two RS-232/422/485 COM ports with hardware and software handshaking
- + Four RS-232 COM ports with software handshaking only
- + 8 IR/serial, 8 relay, and 8 Versiport I/O ports
- + Three built-in 3-Series™ control card expansion slots
- + Installer setup via front panel, Crestron Toolbox™ or Internet Explorer®
- + Backwards compatible to run existing SIMPL programs
- + Full Unicode (multi-language) support
- + Increased network throughput and security
- + Secure access though Active Directory integration or standalone account management
- + IIS v.6.0 Web Server
- + IPv6 ready
- + Front panel color LCD display for setup and diagnostics
- + Front panel USB computer console port
- + 2-space rack-mountable

# 3-Series™ Control Systems



## NEW! AV3 3-Series Control System®

- + All the features and performance of the PRO3 without the color LCD display
- + 3-Series™ control card expansion slots are an add-on option



## NEW! CP3N 3-Series Control System®

- + A more compact, lower-cost alternative to the PRO3 and AV3
- + 512MB RAM & 4GB Flash memory
- + Expandable storage up to 1TB
- + Rear panel MMC memory card slot
- + Cresnet, Gigabit Ethernet, and Control Subnet ports
- + **NEW!** Native BACnet®/IP support
- + One RS-232/422/485 COM port with hardware/software handshaking
- + Two RS-232 COM ports with software handshaking only
- + 8 IR/serial, 8 relay, and 8 Versiport I/O ports
- + No built-in control card expansion slots
- + Single-space rack-mountable



## NEW! CP3 3-Series Control System®

- + All the features and performance of the CP3N without the Control Subnet port



# 3-Series™ Control Systems

## On-Screen Display Control

The MC3 offers a 3-Series Control System® in a compact form factor with several special features including onboard audio file playback and **integrated infiNET EX® wireless gateway**.

**NEW! OSD (On-Screen Display) enables control through any TV or video display** using customizable scrolling menus, full-color icons, bar graphs, and metadata.



### MC3 3-Series Control System®

- + Core 3 OS™ control engine
- + Modular programming architecture
- + Vector floating point coprocessor
- + Onboard 256MB RAM & 2GB Flash memory
- + Expandable storage up to 1TB
- + Integrated infiNET EX® wireless gateway
- + Industry-standard Ethernet and Cresnet® wired communications
- + Available RF and IR control options
- + **NEW!** Customizable OSD user interface
- + Component and composite video outputs
- + WAV, MP3, and WMA audio file playback
- + Built-in IR, COM, relay, and digital input ports
- + High-speed USB 2.0 host ports
- + On-screen installation setup
- + Installer setup via Crestron Toolbox™ or Internet Explorer®
- + **NEW!** Secure access through Active Directory integration
- + **NEW!** Native BACnet®/IP support

# 3-Series™ Control Systems

## Touch Screen Control — No Rack Required!

The new TPCS-4SMD provides a **complete touch screen control system in one compact wall-mountable or tabletop device**. Perfect for townhouses, MDUs and hotels, the TPCS-4SMD offers **a total control solution in one low-cost, space-saving design**.



### **NEW!** TPCS-4SMD

#### 4.3" Touch Screen Control System

- + 3-Series™ control processor
- + 4.3" touch screen — powered by Core 3 UI™
- + Runs a single control system program
- + Onboard 10/100 Ethernet and Cresnet® master ports
- + Control port expansion via C2N-IO module
- + Supports up to 10 Ethernet and 10 Cresnet devices including touch screens, keypads, thermostats, dimmers, sensors and other peripherals
- + Supports a single infiNET EX® gateway
- + Supports Core 3 UI™ XPanel Web-based remote control
- + Supports one mobile device running Crestron Mobile Pro®
- + Supports Fusion RV™ and SNMP remote management
- + WAV file customizable audio feedback
- + Built-in proximity sensor
- + 10 optional "hard key" pushbuttons
- + Custom engravable button text
- + PoE network powered
- + Compatible with all TPMC-4SM wall, surface, and tabletop mounting options
- + Available with black or white smooth finish
- + 10/100 Ethernet LAN port

## Easy System Expansion — It's in the Cards!

Adding control ports to any 3-Series Control System® is easy using 3-Series™ Control Cards and Card Interfaces. Plug up to three control cards directly into an AV3 or PRO3, or use one or more 3-Series Card Interfaces to **add more COM ports, IR ports, relays, and Versiport I/O ports to any 3-Series Control System.**



### NEW! CEN-CI3-1 3-Series™ Card Interface – 1 Slot

- + Accepts one 3-Series™ Control Card
- + Provides control port expansion for any 3-Series Control System®
- + Powerable via PoE or external power pack
- + Half-width, single-space rack-mountable



### NEW! CEN-CI3-3 3-Series™ Card Interface – 3 Slots

- + Accepts up to three 3-Series™ Control Cards
- + Includes a built-in Gigabit Ethernet switch
- + External power pack included
- + Single-space rack-mountable



### NEW! C3 Series 3-Series™ Control Cards

- + Plug-in control port expansion for CEN-CI3-1, CEN-CI3-3, AV3 and PRO3
- + Models available with COM, IR, relay, or Versiport I/O ports

# Networking

## PoE and Gigabit Ethernet

Imagine **the simplicity of Cresnet® with the bandwidth of Ethernet**. It's available today from Crestron through an ever-expanding line of touch screens and other devices utilizing high-speed Ethernet connectivity with PoE (Power over Ethernet). Ethernet with PoE means **total connectivity over one wire**. Configuring a Crestron network of PoE devices is streamlined using any of our PoE Switches and Injectors.



### **NEW!** CEN-SWPOE-16

#### 16-Port Managed PoE Switch

- + All ports 1000Base-T Gigabit Ethernet
- + Provides full IEEE 802.3af PoE on all ports simultaneously
- + Also supports 802.3at PoE+ devices
- + Up to 34.2W per port, 260W total
- + PoE power switchable per port via a control system
- + Auto-negotiating and auto MDI/MDIX
- + Layer 2 managed switching functionality
- + LLDP (Link Layer Discovery Protocol) support
- + Customizable front panel labeling
- + AV friendly, single-space rack-mount design



### **PWE-4803RU** PoE Injector

- + Powers a single PoE powered device
- + Up to 16.8W IEEE 802.3af PoE
- + Compact design, installs anywhere



## CEN-SWPOE-24 24-Port Managed PoE Switch

- + 24 10Base-T/100Base-TX Ethernet ports
- + Dual Gigabit Ethernet uplink/stacking ports
- + Provides full IEEE 802.3af PoE on all ports simultaneously
- + Auto-negotiating and auto MDI/MDIX
- + Web browser configuration
- + SNMP monitoring and management
- + Layer 2 managed switching functionality
- + Customizable front panel labeling
- + AV friendly, 2-space rack-mount design



## CEN-SW-POE-5 5-Port PoE Switch

- + Four 10/100 ports plus uplink
- + 802.3af PoE on all 4 ports
- + Convenient surface-mount form factor

# Speakers

## The Art of Great Audio — Engineered by Crestron®

The product of expert audio engineering and a reanalysis of leading edge speaker design, **Crestron Aspire™** and **Essence™** speakers deliver peak performance for demanding residential installations. Select materials and a refined, high-end appearance underscore the meticulous design behind each model. The result is a complete line of in-wall and in-ceiling speakers worthy of a place in every room of the finest custom home.

The Aspire line strikes a perfect balance between performance and price, delivering **impactful sound quality with minimal impact on your décor**, thanks to paintable zero-bezel grilles. Essence speakers deliver ultimate performance with deep, defined low end; crisp, fluent highs; and stunning realism throughout the mids. All models feature a number of enhancements designed to streamline installation.



**NEW! Aspire™ IW5, IW6, & IW8 In-Wall Speakers**

**NEW! Aspire™ IC5, IC6, IC8, & IC8DT In-Ceiling Speakers**

- + Audiophile performance 2-way in-wall loudspeakers
- + 5.25, 6.5, or 8" woven glass composite woofers
- + 1" advanced synthetic polymer dome tweeters
- + 4th order crossovers

- + Steel composition woofer baskets
- + Vented pole pieces
- + "Zero-bezel" frameless steel grilles, paintable
- + Spring-loaded toggle clamp mounting system
- + Dual-tweeter model (IC8DT) provides single-point stereo reproduction for bathrooms, closets and hallways



**NEW! Essence™ IW5, IW6, & IW8 In-Wall Speakers**  
**NEW! Essence™ IC5, IC6, & IC8 In-Ceiling Speakers**

- + Ultimate performance 2-way in-wall loudspeakers
- + 5.25, 6.5, or 8" Kevlar® woofers
- + 1.1" advanced synthetic polymer dome tweeters
- + Precision 4th order crossovers
- + Cast aluminum woofer baskets
- + Extra large magnets and vented pole pieces
- + "Zero-bezel" frameless steel grilles, paintable
- + Spring-loaded toggle clamp mounting system

# Speakers

## Great Sound for Every Room

Crestron AIR™ and Excite™ speakers are designed to deliver high-quality sound with extended frequency response for residential multiroom audio or home theater applications. The new AIR line offers a sleek looking surface mount solution that's perfect for both indoor and outdoor installations.



### **NEW! AIR™ SR4, SR6, & SR8**

#### Surface Mount Indoor/Outdoor Speakers

- + High-performance 2-way surface mount loudspeakers
- + Designed for high reliability in both indoor and outdoor applications
- + 4, 6, or 8" polypropylene woofers for deep, solid bass
- + Optimized dual front ports for enhanced low-frequency response
- + Titanium dome tweeters for crisp, clear high-end extension
- + Rigid ABS plastic construction with powder coated aluminum grilles
- + Versatile and easy-to-install "QuickBall" mounting system
- + May be mounted over an electrical box or to a light pole
- + Tool-free clamp mechanism allows 360° orientation and continuously variable positioning
- + Up to 200 Watts program power handling (SR8)
- + 8 Ohms nominal impedance
- + Available in black or white – paintable to blend with surroundings
- + Sold in pairs





### **Excite™ IW5, IW6, & IW8 In-Wall Speakers**

- + High-performance 2-way in-wall loudspeakers
- + 5.25, 6.5, or 8" polypropylene woofers for deep, solid bass
- + Treated cloth dome tweeters for natural high-end extension
- + Swivel tweeters for precise coverage optimization
- + Steel composition woofer baskets for increased rigidity
- + Paintable ABS plastic baffle with aluminum grilles
- + Easy-to-install toggle clamp mounting system
- + Front accessible high and low frequency contour switches



### **Excite™ IC5, IC6, IC6DT, & IC8 In-Ceiling Speakers**

- + High-performance 2-way in-ceiling loudspeakers
- + 5.25, 6.5, or 8" polypropylene woofers for deep, solid bass
- + Treated cloth dome tweeters for natural high-end extension
- + Swivel tweeters for precise coverage optimization
- + Steel composition woofer baskets for increased rigidity
- + Paintable ABS plastic baffle with aluminum grilles
- + Easy-to-install toggle clamp mounting system
- + Front accessible high and low frequency contour switches
- + Dual-tweeter model (IC6DT) provides single-point stereo reproduction for bathrooms, closets and hallways

## Powerful, Scalable Multi-Zone Audio

**SONNEX**  
CRESTRON DIGITAL AUDIO TRANSPORT

Sonnex™ is simply **the best sounding, most powerful audio distribution solution**

**on the market.** Featuring high output power, high efficiency, advanced DSP, flexible configuration, and integrator-friendly setup, Sonnex is ideal for homes of all sizes as well as restaurants, sports bars, night clubs, hotels, and banquet halls. **Sonnex is engineered to integrate perfectly with DigitalMedia™** to form a total media distribution solution with minimal wiring — and no headaches.

Sonnex is fully scalable using expansion units that can be placed centrally or remotely, with **simple hookup using a single shielded CAT5e or fiber optic cable.** Start with the SWAMP-24X8 at your head end, and add up to eight SWAMPE or SWE expanders for an astounding 74 stereo zones of robust, audiophile sound quality. A generous 24 inputs are provided at the head end to handle analog and digital sources.

**NEW!** features include an expanded assortment of digital and analog line level outputs via the SWE-8 expansion switcher, and Sonnex Link signal extension using the S-EXT1-S fiber extender.



### SWAMP-24X8 Sonnex™ Multiroom Audio System

- + Advanced multi-zone audio distribution
- + Robust, high-efficiency audiophile grade amplification
- + 140 Watts/Ch. @ 8 Ohms, 400 Watts/Ch. Bridged
- + 70V and 100V output capability via the optional SAT-70V/100V 2 or 4 channel output transformer
- + Eight amplified stereo zone outputs
- + Two additional SPDIF stereo zone outputs
- + Output Bussing—Link multiple adjacent zones
- + Bridgeable outputs—Extra power for large or noisy areas

- + Sonnex Link—One-wire interface to 8 expanders up to 200 feet away
- + Balanced, unbalanced, and SPDIF inputs
- + Direct connection to Crestron Interface for iPod®
- + Volume, bass, treble, loudness, and selectable “tone profiles”
- + 5-band graphic or parametric EQ per zone
- + Dynamic Range Control—Maintains even listening levels
- + Speaker Profiles—Preset speaker settings for fast, easy commissioning
- + Sonnex Speaker Protect™—Extends headroom while preventing damage
- + Energy-saving individual zone power control and global standby
- + Streamlined setup and adjustment
- + Remote fault monitoring
- + Seamless Crestron system integration
- + Heavy duty detachable terminal blocks
- + Low power consumption, cool-running operation
- + Compact 4-space 19” rack-mountable



## **SWAMPE-4 & SWAMPE-8** Sonnex™ Multiroom Audio Expanders

- + Adds four or eight amplified stereo zone outputs
- + Provides same performance and room functionality as the SWAMP-24X8
- + Connects to SWAMP-24X8 via a single shielded CAT5e
- + Three-space rack-mountable

(Continued)

## Sonnex™ Accessories



### **NEW!** SWE-8

#### Sonnex™ Multiroom Audio Expansion Switcher

- + 8-Zone Sonnex expansion with line-level outputs
- + 4 zones with balanced and unbalanced line outputs
- + 4 zones with SPDIF digital outputs
- + All 8 zones also include Crestron Home® CAT5 balanced outputs
- + Professional-quality audio performance
- + Advanced DSP, mono summing, and output bussing per zone
- + Single-cable interface to SWAMP-24X8 via Sonnex Link
- + Plug-and-play operation
- + Single-space rack mountable



### **NEW!** S-EXT1-S Sonnex™ Link over Fiber Extender

- + Extends the Sonnex Link up to 2000 ft over one multimode fiber strand
- + Works reliably without any programming or configuration
- + Transports 24 stereo channels of digital audio
- + Also carries Sonnex control signals
- + Protects against lightning surges for outdoor runs

## Budget-Conscious Multiroom Audio

The C2N-AMP-4X100 delivers **cost-effective audio distribution for up to 16 rooms** — perfect for small to moderate sized houses, condominiums, and businesses.



### **NEW!** C2N-AMP-4X100 4 Room Audio System

- + Affordable audio distribution for 4 rooms, expandable up to 16 rooms
- + Integrated amplifier delivers 50 W/Ch. @ 8 $\Omega$  and 75 W/Ch. @ 4 $\Omega$
- + Room outputs 1&2 and 3&4 each bridgeable for 100 W/Ch. @ 8 $\Omega$
- + Independent control of volume, bass, treble, and other settings per room
- + Six stereo line inputs with loop-thru for easy expansion
- + Front panel controls for source selection and volume control
- + Customizable front panel labelling using Crestron Engraver software or pre-printed labels provided
- + Crestron<sup>®</sup> system integration via Cresnet<sup>®</sup>
- + Built-in Cresnet power distribution

# Audio & Video Solutions

## Next Generation ADMS

The ADMS-G2 is the latest generation ADMS featuring a **leaner, greener package with enhanced performance and many new features** including Pandora® Internet radio, VUDU®, expanded audio output capabilities, support for 3D, and new networking and control capabilities.



### **NEW!** ADMS-G2 Intermedia Delivery System™

- + A new evolution in home entertainment that simplifies how digital media content is acquired and managed
- + Provides seamless access to feature films, music, TV shows, streaming videos, photos & home movies, and the Internet
- + WorldSearch® quickly finds any kind of content from your local media library and the Internet
- + Stylish and intuitive onscreen menus with high-res cover art and metadata display
- + Netflix®, VUDU®, Hulu®, YouTube®, Pandora® and more!
- + Web browser with Flash® and Silverlight® plug-ins
- + HDMI® digital AV theater zone output
- + True HD 1080p video with 3D, Deep Color, and HDCP support
- + DTS-HD®, Dolby® TrueHD, Dolby Digital Plus, or PCM 7.1 surround sound up to 192k/24-bit
- + Two additional stereo audio zone outputs
- + Simultaneous S/PDIF and analog audio signals from all zones
- + Stereo downmix of multi-channel surround sound
- + Support for FLAC, WAV, WMA Lossless, iTunes Plus® & MP3
- + 1 TB internal hard drive optimized for HD multimedia
- + Expandable storage via NAS or Windows® Home Server
- + ADMS Connect® software enables easy media upload and synchronization with Windows PC or Mac®
- + Crestron Home® GUI enables onscreen control over lighting, climate, security, and AV
- + Enhanced touch screen browsing and control from any room
- + CEC pass-through from the control system via HDMI
- + Wake on LAN and remote shutdown
- + Gigabit Ethernet connectivity
- + Compact 2-space 19" rack-mountable chassis

## 7.1 Surround Sound for Every Room

The new HD-XSP makes it easy and affordable to include **high-quality surround sound in any room of the house** as part of a complete Crestron Sonnex™ or DigitalMedia™ distribution system.



### **NEW!** HD-XSP 7.1 High-Definition Professional Surround Sound Processor

- + True 7.1 surround sound via HDMI® and balanced analog out
- + High-resolution 24-bit audio signal processing and conversion
- + DTS-HD®, Dolby® TrueHD, and Dolby Digital Plus decoding
- + High-definition 3D video pass-thru via HDMI®
- + 100% HDCP compliant
- + QuickSwitch HD® technology for fast, reliable switching
- + Stereo downmix via HDMI and/or balanced analog outputs
- + 1 HDMI, 1 SPDIF optical, 2 SPDIF coaxial, and 2 analog inputs
- + Balanced stereo audio mix input for sound reinforcement, paging, doorbell, or phone ringer signals — feeds left, right, and downmix outputs
- + Source compensation and lip sync adjustment on every input
- + Independent level, delay, crossover and parametric EQ adjustments on every surround output
- + Volume, bass, treble, loudness, and compression settings for surround zone
- + Volume, bass, treble, loudness, and mono settings for downmix zone
- + Versatile bass management for systems with or without a subwoofer
- + Color LCD front panel for setup and basic operation
- + Native Crestron® system integration
- + 10/100 Ethernet communications
- + Simplified setup via front panel or software
- + CEC pass-through from a control system via HDMI
- + Single-space rack-mountable

# Audio & Video Solutions

## Enjoy Your iPod Throughout The House

Crestron docking solutions for the popular Apple® iPod® let you instantly enjoy music and podcasts through speakers in any room with enhanced navigation using a Crestron touch screen, iPhone®, iPad®, or Android™ smart device.



### CEN-IDOCV & CEN-IDOCV-DSW

Interfaces for Apple® iPod®

- + Enables full 2-way touch screen control of the iPod
- + Displays metadata and album cover art
- + Plays audio throughout the home
- + Allows viewing of video files on a video touch screen or display
- + Syncs to iTunes® over Ethernet
- + Charges the iPod battery
- + PoE network powered
- + Interfaces with a Sonnex™ system via CAT5 wire
- + Available in white or black



## Internet Radio — Now with Pandora®

Using the Crestron TunerRack Modular Multi-Tuner, you can have up to 6 independent radio tuners including the choice of AM/FM, XM® Satellite Radio, and Internet Radio — now supporting SiriusXM® and Pandora®.



### CEN-TRACK TunerRack Modular Multi-Tuner

- + Accepts up to 3 ATC-Series tuner cards: dual AM/FM, AM/FM + XM®, or Internet radio
- + Rich search capabilities find all your favorite radio stations, programs, and music with ease
- + Support for metadata enables display of station names, song titles, artists, and other details
- + Includes balanced, unbalanced, and digital audio outputs
- + Native Crestron® system integration via Ethernet



### ATC-AUDIONET Internet Radio Tuner Card

- + Occupies a single tuner slot in a CEN-TRACK
- + Access virtually any streaming radio station in the world
- + **NEW!** Pandora® Internet radio now playing metadata, album cover art, thumbs up/down, and bookmark features
- + SiriusXM® Internet Radio available with subscription
- + Browse by format, location, or language
- + Search alphanumerically or by keyword
- + Save and organize user favorites for fast access
- + Can also be used to play sound files, pre-recorded announcements, or background music stored on its internal memory card or external Web server

### World Class Surround Sound — Designed for Integration

**PROCISE™** PROCISE® delivers a high-definition 7.3 surround sound solution for high-end custom theater installations. Using the finest components and a propriety combination of advanced features and innovative technologies, PROCISE fulfills the myriad design challenges and performance expectations of the high-end custom market.



### PSPHD PROCISE® High-Definition Professional Surround Sound Processor

- + 7.3 HD surround sound processing
- + Multiple subwoofer support
- + Audyssey MultEQ® XT technology
- + Audyssey Dynamic EQ® and Dynamic Volume®
- + HDMI® connectivity
- + HD 1080p video switching
- + Studio grade performance
- + Supports Dolby® TrueHD and DTS-HD Master Audio™ 7.1 formats
- + QuickSwitch HD® key management and switching
- + Discrete signal processing for every speaker and subwoofer
- + Integrated 3-channel line mixer and speech processor
- + Mono and stereo down-mix outputs
- + Flexible routing of any mixer input to any output
- + Inputs for HDMI, AES/EBU, S/PDIF optical and coaxial sources
- + Inputs for stereo and multi-channel analog sources
- + XLR balanced inputs and outputs
- + Exclusive PROAMP automatic amplifier pairing
- + Native Crestron control
- + Crestron PROCISE Tools software
- + DigitalMedia™ system integration



## **PROAMP-7X250 & PROAMP-7X400**

### **PROCISE® High-Definition Professional Surround Sound Amplifiers**

- + World-class, professional 7-channel surround sound power amplifiers
- + Choice of 250 or 400 Watts per channel
- + Unprecedented integration with the PSPHD for seamless control and monitoring
- + Native Crestron system integration via Ethernet or Cresnet®
- + Ultra-efficient hybrid design puts immense output power in minimal space
- + The benefits of Class D with the warm, neutral sound quality of Class AB
- + Infinitesimal noise and THD affords pure, natural audio reproduction
- + Robust, isolated channel power supplies ensure maximum dynamic impact
- + DC coupling affords ultimate transparency and frequency response
- + Inrush current limiting for gentle power-up
- + Front panel signal, clip, and fault indicators
- + Expanded monitoring of temperature, faults, and signal status from PSPHD or control system
- + Heavy duty detachable terminal blocks ease speaker wire termination
- + 24k gold-plated XLR balanced inputs
- + Five-space 19" rack-mountable

## Audio & Video Solutions

### High-Definition Multi-Window Video Processor and Annotator

Envision the ultimate home theater or sports bar with multiple television channels, Blu-ray movies, and computer-based media all displayed simultaneously on one high-definition screen. Imagine the ability to **annotate directly on the screen or from a separate touch screen** along with controls for AV, lighting, and other functions. And picture it all in astounding detail and rich, life-like color.



Now you've imagined the DVPHD High-Definition Digital Video Processor from Crestron® — the ultimate multi-window video processor that displays up to **eight high-res computer and HD video images within a fully-customizable graphical environment**, with dynamic transition effects, advanced video processing, real-time annotation, and touch screen control!

## **DVPHD High-Definition Digital Video Processor and Annotator**

- + Up to 8 fully-scalable HD video windows on a single display
- + Real-time, interactive annotation over high-definition video and computer images
- + Optional Guidebar® technology enables annotation and presentation control from a presenter's touch screen
- + QuickSwitch HD® provides seamless switching with transition effects
- + Modular design accepts the choice of up to 8 simultaneous inputs
- + Handles DVI, HDMI®, DisplayPort Multimode, and HD-SDI digital video sources
- + Enables display of HDCP protected content
- + Handles analog RGB, component, S-Video, and composite video sources
- + Compatible with Crestron V-Panel™ and a vast range of third-party touch screens
- + Fully customizable, high-definition 24-bit graphics
- + Professional high-definition scaling and de-interlacing
- + Supports resolutions up to WUXGA 1920 x 1200 and HD 1080p60
- + Automatic input/output configuration via sync-detection and EDID
- + Built-in test patterns for easy setup and fine-adjustment
- + Setup via LCD front panel, touch screen or mouse OSD, or Web browser
- + Native Crestron control system integration
- + High-speed Ethernet and Cresnet® communications



Now more than ever, AV integrators and their customers need to be planning and upgrading to meet the digital age. Even today, Crestron® DigitalMedia™ remains **the only complete and proven solution for distributing and managing digital AV.**

**DigitalMedia makes all your AV components work together seamlessly** — regardless of brand or resolution or audio format — including all types of digital and analog sources — even equipment with difficult HDCP, CEC, or EDID schemes.

Only DM® enables distribution over **CAT5e, multimode fiber, and single-mode fiber** — all on one fully integrated and scalable platform.

And, only DM offers **a full line of switchers, transmitters and receivers** to address any sized installation or configuration.

There are many good reasons top architects, major hotels, and the majority of Fortune 500 companies have all chosen Crestron DigitalMedia. Because it's proven itself in literally thousands of installations to deliver **an extremely stable, cost-effective, and scalable platform.** Because, with over 10,000 certified experts at Crestron and in the field, there is no comparable solution with better support anywhere. And, because **only DigitalMedia has the benefit of over six years of development and real world experience** to ensure a complete and reliable solution for every design challenge — simply and quickly.




Crestron is pleased to announce that all of our **DigitalMedia™ products now support HDBaseT™ specifications**, ensuring interoperability with other HDBaseT products. HDBaseT technology affords the simplicity of HDMI® with the added benefit of extended wiring distances using ordinary CAT5e or Crestron DigitalMedia 8G™ cable. Via DM 8G+, **third-party HDBaseT display devices and sources can be connected directly to the DigitalMedia system** without requiring any DM receivers or transmitters.

Whether upgrading an existing analog AV system or planning for an entirely new digital infrastructure, there's only one choice — **DigitalMedia by Crestron.**

## Go the Distance with DigitalMedia™ over Copper or Fiber

For interfacing every video display and source device throughout a home or business, Crestron now offers three main types of DM 8G® infrastructure — **DM 8G+™ cable, DM 8G® Fiber, and NEW! DM 8G SM Fiber**. All three types handle high-bandwidth HD AV signals with full support for HDCP, CEC, and 3D video, plus HD multichannel audio formats like Dolby® TrueHD and DTS-HD Master Audio™.

DM 8G+ provides a **true one-wire transport for moving high-definition video, audio, and Ethernet over low-cost twisted-pair cable**. Using simple CAT5e wire, DM 8G+ achieves ultra

 high-bandwidth over distances of up to 330 ft (100 m), and is **HDBaseT™ compliant** to enable direct integration with HDBaseT products.

DM 8G Fiber uses a single strand of multimode fiber to transport signals up to 1000 ft (300 m), while **NEW! DM 8G SM Fiber** uses single-mode fiber to attain **wiring distances up to 7.5 miles or 12 km!**

## DigitalMedia™ Transmitters & Receivers

Crestron offers an ever-growing line of compact transmitters and receivers in all three types of DM 8G®, providing **the industry's most flexible and scalable platform** for interfacing with remote display devices, AV sources and computers — whether they're several feet or several miles away.



**NEW!** DM-TX-401-C,  
**NEW!** DM-TX-401-S, &  
**NEW!** DM-TX-401-S2



DM-TX-201-C,  
DM-TX-201-S, &  
**NEW!** DM-TX-201-S2



DM-TX-200-C-2G



## DigitalMedia™ Transmitters

- + Options for portable, rack mount, surface-mount, and wall plate applications
- + Available inputs for HDMI®, DisplayPort, VGA, and analog AV sources
- + Built-in auto-switching makes setup and operation a breeze
- + HDMI audio embedding enables combining digital video with analog audio sources
- + Most models include 10/100 Ethernet and USB HID ports
- + **NEW! DM-TX-401 Series** models include IR/RS-232 ports
- + Models available with DM 8G+™ cable, DM 8G® Fiber, or DM 8G SM Fiber connectivity

## DigitalMedia™ Receivers

- + All models feature HDMI® display output, 10/100 Ethernet and IR/RS-232 control ports
- + Professional-quality HD scalars afford extremely easy setup, flexible configuration and ultra reliable operation
- + Other options include built-in audio amplifiers, relay/digital input control ports, USB HID ports and video wall processing
- + Low-profile design hides discreetly behind most display devices
- + Models available with DM 8G+™ cable, DM 8G® Fiber, or DM 8G SM Fiber connectivity

Please see the Crestron website for more information and additional DM transmitter/receiver models.



DM-RMC-SCALER-C,  
**NEW!** DM-RMC-SCALER-S, &  
**NEW!** DM-RMC-SCALER-S2



DM-RMC-200-C,  
**NEW!** DM-RMC-200-S, &  
**NEW!** DM-RMC-200-S2



DM-RMC-150-S



DM-RMC-100-C &  
DM-RMC-100-S

## DigitalMedia™ Matrix Switchers — Totally Configurable, Totally Scalable, Total Integration!

Every AV system is different. Using Crestron DM® switchers, ***you* configure the switcher to meet *your* requirements** — not the other way around.

Fully scalable and modular, Crestron DM switchers can accommodate **any combination of digital and analog sources**, with the ability to **combine copper and fiber DM types on a single chassis**. A whopping 19 different input cards are now offered.

**Routing AV signals is only the beginning.** DM matrix switchers include an extensive set of enhancements to address every design challenge you're likely to encounter — **eliminating the need for thousands of dollars worth of extra interfaces and converters**. Rather than treating audio as an afterthought, DM switchers include audio embedding, audio de-embedding at the inputs *and* outputs, breakaway switching, and DSP down-mixing to enable **simultaneous surround sound and stereo audio from a single source**. Additionally, every input card — even analog — includes a dedicated HDMI output to pass the input signal through to a local AV processor or another switcher.

**NEW! Private Network Mode** dramatically simplifies deployment on a home network or corporate LAN, effectively hiding all the DM devices from the outside world and requiring just a single IP address for the complete DM system.

**NEW! Improved EDID management** simplifies configuration of all your varied source components, displays and processors.

**NEW! Live HD Streaming Output** enables RTSP streaming over Ethernet to a computer, touch screen or other device.  
Coming 2013



**DM-MD 8X8,**  
**NEW!** DMCO  
7-Series  
Streaming  
Output Card



## 16X16 & 32X32 DigitalMedia™ Switchers

- + Provide lossless HD AV signal routing over CAT5e or fiber
- + Integrate video, audio, networking, and control over one wire
- + Afford full matrix switching scalable from 8x8 to 32x160
- + **NEW!** Supports HDBaseT™ specifications
- + DM 8G+™ in/out supports 330 ft over CAT5e
- + DM 8G® Fiber in/out supports 1000 ft over multimode fiber
- + **NEW!** DM 8G SM in/out supports up to 7.5 miles (12 km) over single-mode fiber!
- + **NEW!** RTSP streaming output allows live HD streaming to computers, touch screens, and other devices
- + Modular input cards available for HDMI®, Displayport Multi-mode, DVI, VGA, 3G-SDI, RGB, SPDIF, analog video/audio, & all types of DM®
- + Output cards available for HDMI, analog audio, streaming AV, and all types of DM
- + QuickSwitch HD® switching and HDCP key management
- + **NEW!** Simplified EDID signal management
- + Integrated Gigabit Ethernet switch with **NEW!** Private Network Mode
- + Full HD 1080p60 and UXGA/WUXGA
- + 3D, Deep Color, and high-bitrate 7.1 encoded audio
- + Simultaneous output of stereo and surround sound audio
- + Integrated device control via CEC, IR and RS-232
- + USB HID mouse and keyboard signal distribution
- + Available with internal redundant power supply

## Large-Scale, Mission-Critical DM® Switching

Coming in 2013, the DM-MD64X64 and DM-MD128X128 offer large-scale **modular matrix switching for massive projects demanding ultimate reliability**. Everything from the 8-channel I/O blades to the CPU, power supplies, and cooling fans can be replaced on the spot, minimizing or eliminating down-time in the unlikely event of a component failure.



DM-MD64X64

### **NEW! DM-MD64X64 & DM-MD128X128**

#### DigitalMedia™ Switchers

- + Modular design configurable in blades of 8 inputs or outputs
- + Full matrix switching scalable from 8x8 to 128x128
- + DM 8G+™ cable, DM 8G® Fiber, DM 8G SM Fiber, and HDMI® I/O blades available
- + **NEW!** Supports HDBaseT™ specifications
- + Front panel 15" color touch screen for switcher setup and control
- + QuickSwitch HD® technology manages HDCP keys for fast, reliable switching
- + USB HID signal routing with breakaway
- + Integrated Ethernet switch with a Gigabit LAN port
- + Easy setup and diagnostics tools via front panel or software
- + Onboard hot-swappable redundant power supplies and fan tray
- + Cold-swappable CPU and I/O blades
- + Fault monitoring and notification via front panel and network
- + 14U or 23U 19-inch rack-mountable

## Easy, Affordable HD Distribution over one CAT5e

DigitalMedia™ isn't just for huge homes and businesses. These DigitalMedia Distribution Centers provide **a professional-grade digital AV solution** for any small to moderate sized house, condo, small office, bar or restaurant. Featuring DigitalMedia 8G+™ technology, these simple switchers deliver **ultra-reliable, ultra high-bandwidth signal routing over inexpensive CAT5e wiring**, and are compatible with DM 8G+™ receivers and HDBaseT™ display devices.



DM-MD6X6

### DM-MD 6X4 & 6X6

#### DigitalMedia™ Distribution Centers

- + Low-cost, high-performance multiroom HD AV signal routing
- + True one-wire solution using DigitalMedia 8G+™ technology
- + **NEW!** Supports HDBaseT™ specifications
- + Distributes uncompressed digital AV over CAT5e
- + Provides DM 8G+™ outputs for 3 or 5 remote displays
- + Allows up to 330 ft (100 m) wire distance to each display
- + Single HDMI® output for a local display or audio processor
- + Six HDMI inputs for HDMI, DVI, or DisplayPort Multimode
- + Handles HD 1080p60 and UXGA/WUXGA resolutions
- + Handles 3D, Deep Color, and high-bitrate 7.1 encoded audio
- + QuickSwitch HD® technology for fast, reliable switching
- + Performs automatic AV signal format management via EDID
- + Enables device control via CEC
- + Enables USB HID mouse and keyboard signal extension
- + Includes integrated Ethernet switch
- + Provides Power over DM® for compatible receivers
- + Easy setup and diagnostics via front panel or software
- + Includes built-in universal power supply
- + Native Crestron system integration via Ethernet
- + Standard component width or 2-space rack-mountable

# HDMI® Essentials

## HDMI® Switching You Can Rely On

Crestron QuickSwitch HD® switchers deliver **fast, trouble-free switching of HDMI signals** with numerous advanced features for routing and managing multiple digital multimedia signals.



HD-MD8X2

### HD-MD 8X1 & 8X2

#### QuickSwitch HD® Switchers

- + QuickSwitch HD® switching technology
- + Supports HDMI® w/Deep Color, 3D, and high-bitrate 7.1 audio
- + Compatible with DVI and DisplayPort Multimode
- + Supports resolutions up to HD 1080p60 and UXGA/WUXGA
- + Detects and reports video and audio input information
- + Manages HDCP digital rights management
- + Performs automatic AV signal format management via EDID
- + Includes front panel controls with security lockout
- + Allows audio breakaway switching
- + Native control system integration via Ethernet or Cresnet®
- + Single-space 19-inch rack-mountable

### Universal HD Scaler

The HD-SCALER makes it easy to add a high-performance video scaler to any HDMI® or DVI display to accommodate a variety of sources and ensure compatibility with a wide range of input resolutions. With both HDMI and analog inputs plus built-in 2x1 switching, the HD-SCALER provides **a perfect problem solver for upgrading legacy systems.**



## **HD-SCALER** High-Definition Video Scaler

- + Compact, low-profile surface mount design
- + Automatically scales any input signal to match any display
- + Supports resolutions up to HD 1080p and UXGA/WUXGA
- + Performs deinterlacing of NTSC, PAL, and 1080i sources
- + Handles HDMI® signals with HDCP
- + Supports analog video and computer sources
- + Allows advanced management of EDID
- + Allows adjustable overscan and underscan up to 7.5%
- + Auto-switches between digital and analog sources
- + Handles 7.1 digital audio and analog stereo audio
- + Allows embedding of analog audio to HDMI
- + Setup via on-screen display using IR wireless remote
- + Built-in test patterns
- + Cresnet® control system integration
- + Provides a powerful portable diagnostic tool for any video setup

## **HDMI® Problem Solver**

Need to feed two displays from one HDMI source? Or, split an HDMI signal between a display and a surround sound processor? Need to break out the HDMI audio signal and convert it to SPDIF or analog? Or, merge separate digital audio and video sources into one HDMI stream? Not a problem...just use the HD-DA-2.



## **HD-DA-2** 1-to-2 HDMI® Distribution Amplifier & Audio Converter

- + One in, two out HDMI signal splitter
- + Extracts analog and SPDIF audio from HDMI
- + Embeds SPDIF audio onto HDMI
- + Merges DVI and SPDIF into one HDMI signal
- + Supports HD 1080p w/Deep Color, 3D, and 7.1 HD audio
- + Allows configuration of audio EDID and HDCP key handling
- + No programming or control system required

# HDMI® Essentials

## HDMI® over Fiber Extenders

Crestron HDMI over Fiber technology affords **reliable, high-performance digital AV signal extension over long distances**, handling high-definition digital video and audio, analog audio, Ethernet, HID, and control signals all over one fiber strand.



### HD-TX1-F & HD-RX1-F

#### HDMI® over Fiber Transmitter and Receiver

- + Extends uncompressed digital AV and control signals 1000 ft (300 m) over simplex multimode fiber
- + Supports HDMI with Deep Color, DVI, and DisplayPort Multimode
- + Supports 7.1 channel lossless audio up to 48 kHz
- + Handles resolutions up to 1920x1200 and 1080p60
- + Passes CEC, EDID and HDCP
- + Includes universal IR repeater
- + Extends bidirectional RS-232
- + Provides electrical isolation for outdoor runs
- + Affords a hidden wiring solution using CresFiber® CLEAR Fiber Optic Cable



### HD-TX3-F & HD-RX3-F

#### HDMI® over Fiber Transmitter and Receiver

All the features of the HD-TX1-F and HD-RX1-F plus:

- + Adds Ethernet, USB HID, and analog audio signal extension



## HDMI® over Twisted Pair Extenders

When you just need to get an HDMI signal from one end of the building to the other, Crestron HDMI over Twisted Pair Extenders provide a **professional-grade solution that's incredibly simple and ultra-reliable.**



### HD-EXT1-C

#### HDMI® over Shielded Twisted Pair Extender

- + Extends uncompressed digital AV and control signals 330 ft (100 m)
- + **NEW!** Supports HDBaseT™ specifications
- + Works reliably without any programming or configuration
- + Supports HDMI with Deep Color and 3D
- + Supports 7.1 channel HD lossless audio
- + Compatible with DVI and DisplayPort Multimode
- + Handles resolutions up to 1920x1200 and 1080p60
- + Passes CEC, EDID and HDCP
- + Includes universal IR repeater
- + Extends bidirectional RS-232



### HD-EXT2-C

#### HDMI® over Shielded Twisted Pair Extender

All the features of the HD-EXT1-C plus:

- + Adds stereo analog audio extension via a second cable

# Lighting Control

## In-Wall Dimmers & Switches

**CAM:EO**<sup>®</sup>

Cameo<sup>®</sup> dimmers and switches offer **direct control of individual lighting circuits in an attractive wall plate form factor.**

Cameo comes in a range of options to fit any need or budget, with a variety of button sizes that can be custom engraved and changed in the field. Optional **infiNET EX<sup>®</sup> wireless networking enables integration with a central control system without running any extra wiring**, providing an ideal upgrade for houses, apartments, and condominiums with existing wall plate dimmers and switches. An integrated system allows every lighting load to be centrally controlled and monitored as part of a home-wide energy management solution.



### **CLW-DIMEX-P & CLW-SWEX-P**

#### **Cameo<sup>®</sup> Wireless In-Wall Dimmers & Switches**

- + Available in all 12 Cameo colors and finishes
- + Field replaceable and engravable buttons
- + infiNET EX<sup>®</sup> wireless communication
- + Dimmers configurable with up to 4 buttons
- + Switches configurable with 2 buttons or rocker
- + Available slave remote dimmers/switches
- + Screw-clamp connectors for easier installation
- + White LED feedback indicators
- + Stylish bargraph for real-time status feedback
- + Available **CLW-DIMSWEX-P** provides combo dimmer and switch in one device



## **CLW-DIMEX-E & CLW-SWEX-E** Cameo® Express Wireless In-Wall Dimmers & Switches

Same features as Cameo Wireless except:

- + Lower cost solution
- + Available in smooth almond, black and white
- + Green LED feedback indicators
- + Does not support slave remotes
- + Available **CLW-DIMSWEX-E** provides combo dimmer and switch in one device

## **Wireless Integrated Lamp Control**

**Even plug-in type lamps and fixtures can be monitored and controlled** using Crestron Green Light® lamp dimmers and switches. Wireless communication provides an easy path to integration with a central energy management system.



## **CLW-LDIMEX & CLW-LSWEX** Wireless Lamp Dimmers and Switches

- + Robust infiNET EX® wireless technology
- + Plugs into a 120 Volt AC receptacle
- + 1- and 2-channel models available

# Lighting Control

## Euro/UK In-Wall Dimmers and Switches

Crestron offers a complete line of in-wall dimmers, switches, and keypads for 230 Volt applications. Packed with great features from our Cameo® line — like **engravable and field configurable buttons, out of the box functionality, and infiNET EX® wireless technology** — CLWI series dimmers and switches flaunt a sleek appearance designed to fit UK and European gang boxes. Available in white or anthracite finishes.



### NEW! CLWI Series In-Wall Dimmers & Switches

- + In-wall control of 230VAC lighting
- + Fits UK and European gang boxes
- + Available in white or anthracite finishes
- + Universal phase dimming of 2-wire loads (**CLWI-DIMUEX**)
- + 0-10V dimming of LED and fluorescent (**CLWI-DIMFLVEX**)
- + Electronic low-voltage dimming (**CLWI-DELVEX**)
- + Switching of 2 Amp/AX loads (**CLWI-SWEX**)
- + Switching 2 channels of 2 Amp loads (**CLWI-ISW2EX**)
- + Programmable for custom keypad functionality
- + infiNET EX® wireless communication
- + Configurable with combinations of pushbuttons and/or rockers
- + White LEDs for real-time status feedback
- + Remote input for a momentary or maintained switch (**CLWI-DIMUEX** and **CLWI-DELVEX** only)

### NEW! CLWI-KPLEX In-Wall Lighting Keypad

- + Adds multi-way control for any CLWI dimmer or switch
- + Programmable for custom keypad functionality
- + infiNET EX® wireless communications
- + 230V AC line powered

## In-Wall Integrated Room Lighting and Shade Controller

Crestron iLux® provides a **versatile, energy-saving wall mount lighting controller for home theaters and other spaces** with 6 dimmable lighting zones and 6 motorized shade control zones. Multiple units can be linked to handle larger rooms. Support for occupancy sensors and photocells enables **localized energy management functionality**. Wired or wireless control system interface allows for integration as part of a total home control solution.



CLS-C6M

### CLS-C6 Series iLux® In-Wall Lighting Systems

- + 6 channels of dimming or switching
- + 6 groups of shade and drape control
- + Linkable for large rooms and multi-room applications
- + Front panel controls with customizable labeling
- + Easy setup from front panel or iLux Designer software
- + Add-on keypads, touch screens, and IR remote
- + Supports occupancy sensors and photocells
- + Optional integrated motion sensor
- + Integrates with control systems via Cresnet® or infiNET™
- + Expanded load type support via CLS-EXP modules
- + Available in white, black, or almond

# Lighting Control

## Maximize Natural Lighting to Minimize Energy Usage

Motorized window shades let you **control how much natural light enters a room, reducing dependence on costly electrical lighting.** Daylight harvesting allows light fixtures near windows to be dimmed or shut off when sufficient natural light is available. Climate control costs can also be contained by closing shades in the summer and opening them in the winter. Automating shades, screens, and lifts is also an essential component of any integrated home theater system.



### C2N-SDC Shade and Drape Controller

- + Provides a Cresnet® interface for third-party motorized window treatments, skylights, doors, lifts and projection screens
- + Controls two independent 120V AC 3-wire bidirectional motors
- + Built-in timing and interlock logic
- + Flush wall box mountable
- + **C2N-SDC-DC** 24 Volt DC controller also available

### C2N-SSC-2 Somfy® Shade Controller

- + Bidirectional serial interface for two Somfy ILT motors
- + Connects to iLux® or any Crestron lighting control system via Cresnet®
- + Affords precision control and feedback of shade positioning
- + Surface mountable

## Occupancy and Ambient Light Sensing

A total energy management solution requires automation of lighting, HVAC, shades, AV and other equipment in response to the changing conditions in a room. Crestron Green Light® Occupancy Sensors provide reliable detection of when a room is vacant or occupied, allowing lights and AV equipment in the room to be shut off and climate control turned down when they're not needed. Photocells enable shades and lighting to be adjusted according to the amount of ambient light available through windows and other natural light sources.



GLS-LCL



GLS-LOL

### GLS-LCL & GLS-LOL

#### Crestron Green Light® Photocells

- + Measure ambient light level from all available light sources
- + Versatile flush or surface mount options
- + 0 to 10 Volt DC analog control output
- + Optional Cresnet® control interface via GLS-SIM



GLS-ODT-W-1200



GLS-ODT-C-2000

### GLS-ODT-C & GLS-ODT-W

#### Dual-Technology Occupancy Sensors

- + Dual-technology motion detection
- + Versatile ceiling & wall mount options
- + Up to 2000 square feet coverage area
- + Extremely accurate and reliable sensing
- + Microprocessor-controlled self-adapting operation
- + Built-in ambient light recognition
- + Optional Cresnet® control interface via GLS-SIM
- + **GLS-OIR-C & GLS-OIR-W** passive infrared models also available

# Lighting Control

## DIN Rail Lighting & Automation

Squeeze the most out of small spaces with DIN rail lighting products. Great for MDUs, condominiums, and custom theaters, DIN rail modules deliver **integrated lighting and motor control at the best price per square inch**. In addition to lighting and motor control, our complete DIN rail line includes a control system processor, several versatile control interfaces, and Cresnet® distribution solutions.



### DIN Series DIN Rail Enclosures & Modules

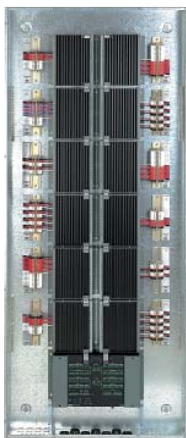
- + **DIN-EN Enclosures** – metal construction; available with 2, 3, or 6 rails; 18 DIN units wide
- + **DIN-AP2 2-Series Automation Processor** – Cresnet & Ethernet; e-Control, SNMP, & Crestron Fusion Support; RS-232, IR, Versiport, & relay ports
- + **DIN-1DIM4 Dimmer** – 4-channels, 120-277V operation, zero cross filter, air-gap relay, Cresnet, override input
- + **DIN-1DIMU4 Universal Dimmer** – 4-channels, forward/reverse phase, 120-240V operation, auto load detection, zero cross filter, air-gap relay, Cresnet, override input
- + **DIN-4DIMFLV4 0-10V Fluorescent Dimmer** – 4-channels, switching and 4-wire dimming, 120-240V operation, Cresnet, override input
- + **DIN-DALI-2 DALI Interface** – 2-channels, controls 128 DALI ballasts, Cresnet & Ethernet, override input
- + **DIN-8SW8 High-Voltage Switch** – 8-channels, 120-240V operation, Cresnet, override input
- + **DIN-8SW8-I High-Voltage Switch w/Digital Inputs** – 8-channels, 120-240V operation, Cresnet, override input, contact-sensing inputs
- + **DIN-2MC2 Motor Control** – 2-channels, bidirectional motor control, 120-240V operation, Cresnet, override input
- + **DIN-A08 Analog Output Module** – 8-channels, 0-10V outputs, Cresnet, override input



- + **DIN-I08 Versiport Module** – 8-channels; for external sensors, detectors, alarms, & contact closures; Cresnet
- + **DIN-PWS50 Cresnet Power Supply** – 50 Watts @ 24V DC
- + **DIN-BLOCK Cresnet Distribution Block** – 12 termination blocks, split power bus, diagnostic LEDs
- + **DIN-HUB Cresnet Distribution Hub** – 3-segments, configurable power distribution

## Automation Enclosures

Crestron CAEN enclosures deliver **high-density, high-performance lighting control for an entire house**. A full selection of lighting modules is offered, with over a hundred possible circuits per enclosure.



## CAEN Series Automation Enclosures & Modules

- + Five sizes available with up to 14 module spaces
- + Up to 8 channels per module; 120V or 230V; 2-wire dimming, ELV dimming, high-inrush switching, 2-way motor control, & fan speed control options
- + Color-coded termination blocks
- + Optional load-side breakers for 230V applications
- + Space for lighting control processors and power supplies
- + Cresnet and Ethernet communications

# Climate Control

From updating a conventional thermostat for essential HVAC integration, to managing commercial-grade environmental systems in the most high-tech estate or high-rise MDU, **Crestron gives you more ways to interface with climate control systems** as part of a total home control and energy management solution.

## Communicating Thermostats

Crestron thermostats install easily in place of any conventional thermostat to enable full integration as part of a total Crestron solution.



### **CHV-TSTATEX** Wireless Thermostat w/infiNET EX®

- + Heat/cool thermostat for baseboard, forced air, and heat pump HVAC systems
- + FCU (Fan Coil Unit) versions available for hotel room applications
- + Crestron system integration via infiNET EX wireless network — no extra wires required
- + Saves on energy costs with advanced programming abilities
- + Supports two remote temperature sensors
- + Fail-safe mode allows continuous operation if control system goes offline
- + Large backlit LCD display
- + Available in white, black, or almond



## CHV-TSTAT & CHV-THSTAT Thermostats

- + Heat/cool thermostats with optional humidistat
- + Cresnet® wired control system interface
- + Supports two remote temperature or humidity sensors
- + Large backlit LCD display
- + Available in white, black, or almond

## 3-Series™ BACnet®/IP Support



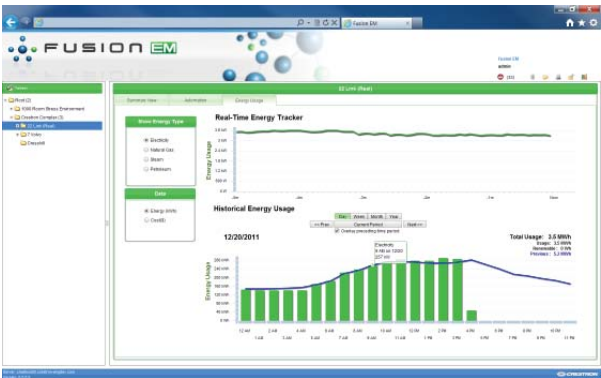
In a luxury home or high-rise complex employing commercial grade HVAC equipment, BACnet can be utilized to provide a seamless interface to the Crestron system. With **NEW! BACnet/IP support built into every 3-Series Control System®**, there's no need for a separate gateway or protocol translator.

Native support for the BACnet/IP communication protocol provides **a direct interface to third-party building management systems over Ethernet**, simplifying integration with HVAC, security, fire & life safety, voice & data, lighting, shades, and other systems. Using BACnet/IP, each system runs independently with the ability to communicate together on one platform for a truly smart building.

# Energy Management

## Fusion EM™

Fusion EM Energy Management Software **monitors, manages, and controls lighting, climate and energy usage in every room of the home.** Fusion EM enables homeowners to make intelligent and informed energy saving decisions. As part of a complete Crestron Green Light® integrated power metering and lighting control solution, Fusion EM delivers accurate information about all energy sources.



## NEW! Fusion EM™ Energy Management Software

- + Track real-time and historical energy usage for day, week, month or year
- + Get an at-a-glance view of room status for the entire home
- + Define preset scenes and settings for different activities and when away from home
- + Maintain full control of lighting levels, shades, and climate – anytime, anywhere – all from a simple, web-based GUI
- + Works with the GLS-EM-MCU Crestron Green Light® Power Meter Control Unit for tracking of actual energy consumption

## Reliable, Accurate Energy Measurement

The Crestron Green Light® Power Meter Control Unit (GLS-EM-MCU) measures both voltage and current at the incoming electrical service and individual branch circuits to **provide complete and accurate real-time data for use in assessing power usage** and employing energy-saving strategies. By design, the GLS-EM-MCU integrates with Fusion EM™ Energy Management Software to monitor and manage lighting and other devices throughout a home or high-rise MDU to **achieve real, meaningful control over energy consumption.**



### **NEW!** GLS-EM-MCU Power Meter Control Unit

- + Provides power metering across 3 phases (main legs)
- + Compatible with 100-347 Volt, split and 3-phase systems
- + Also allows power metering for up to 84 individual branch circuits
- + Works with GLS-EM-CT and GLS-EM-CTI current transformers and interfaces
- + Measures and logs RMS voltage, current, and active power
- + Reports data to a control system and Fusion EM™ software
- + Allows real-time power monitoring on a touch screen, computer, or mobile device
- + Internal non-volatile memory reliably stores logged data

# Keypads

## Beautiful, Functional, Configurable

# CAM:EO®

Crestron Cameo® is a favorite keypad choice for all types of lighting, AV and other control applications. The **choice of wired or wireless connectivity** allows easy, flexible installation in both new and existing structures. Cameo wired versions also provide a local interface for occupancy sensors and photocells as part of a total energy management solution.

The **choice of wired or wireless connectivity** allows easy, flexible installation in both new and existing structures. Cameo wired versions also provide a local interface for occupancy sensors and photocells as part of a total energy management solution.



### INET-CBDEX-P Cameo® Wireless Keypads

- + Available in all 12 Cameo colors and finishes
- + Configurable with up to 8 backlit engravable buttons
- + Optional “split-buttons” in bottom two positions
- + Auto-dimmable backlight and LED intensity
- + White LED feedback indicators
- + Built-in blinking and bargraph logic
- + infiNET EX® 2-way RF wireless communication
- + Standard wall box mountable
- + 120V AC line powered

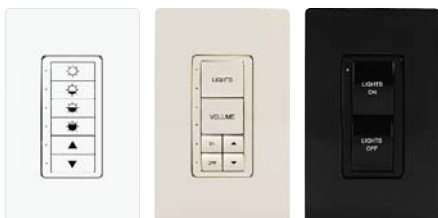
### C2N-CBD-P Cameo® Keypads, Standard Mount

Same features as Cameo Wireless Keypads except:

- + Cresnet® wired communication and power
- + Dual Versiport interface for external sensors
- + Compatible with Ascent™ metal faceplates

## Affordable Control with Essential Features

A lower-cost Cameo® alternative, Cameo Express provides the features you need to deliver a **high-quality custom keypad solution at a very reasonable price.**



### INET-CBDEX-E

#### Cameo® Express Wireless Keypads

- + Lower cost keypad solution
- + Available in smooth almond, black and white
- + Configurable with up to 8 engravable buttons
- + Optional “split-buttons” in bottom two positions
- + Green LED feedback indicators
- + Built-in blinking and bargraph logic
- + infiNET EX® 2-way RF wireless communication
- + Standard wall box mountable
- + 120V AC line powered

### C2N-CBD-E

#### Cameo® Express Keypads, Standard Mount

Same features as Cameo Express Wireless Keypads except:

- + Cresnet® wired communication and power
- + Compatible with Ascent™ metal faceplates

# Keypads

## Full Functionality, Tiny Footprint

For architects and designers looking for a **more subtle stylistic approach to providing lighting and AV control**, Crestron offers Cameo® Flush Mount Keypads. The design that earned Cameo its name, these tiny keypads offer the same full-sized configurable buttons and other features as standard mount Cameos in approximately 1/3 of the space.



## C2N-CBF-P Cameo® Keypads, Flush Mount

- + Incredibly small footprint and slim profile
- + Available in 5 Cameo textured colors
- + Compatible with Ascent™ metal faceplates
- + Configurable with up to 8 backlit engravable buttons
- + Optional “split-buttons” in bottom two positions
- + Auto-dimmable backlight and LED intensity
- + White LED feedback indicators
- + Built-in blinking and bargraph logic
- + Cresnet® wired communication and power
- + Dual Versiport interface for external sensors



## Modern Design Meets Modern Function

Even the most luxurious or contemporary interior is a perfect candidate for Cameo® keypads. Ascent™ faceplates bring high-style to any Cameo wired keypad in seven **lustrous metallic finishes designed to appeal to the most demanding architect or interior decorator.**



### **CBD-FP-ASCENT & CBF-FP-ASCENT Ascent™ Solid Metal Faceplates for Cameo® Keypads**

- + Choice of 7 luxurious colors and finishes
- + One-piece solid metal bezel
- + Exceptional fit and finish
- + Mix and match with any color buttons
- + Multiple cutout designs and button configurations
- + Models available for Cameo Standard Mount and Flush Mount keypads

# Keypads

## Cameo® Style for International Wall Boxes and Built-in Furniture

These flexible keypads are designed for installation in UK and European style wall boxes, and can also be mounted into furniture without requiring a backbox. Optional architectural faceplates offer a metallic accent for a sophisticated appearance.



Shown w/Architectural faceplate option

## C2NI-CB Cameo® International Keypads

- + UK/European style electrical box installation
- + Flush mountable without a backbox
- + Available in textured almond, black or white
- + Architectural faceplate options available
- + Versatile combinations of up to 12 pushbuttons
- + Customizable backlit button engraving
- + White LED feedback indicators
- + Built-in LED blinking and bargraph logic
- + Auto-dimmable backlight and LED intensity
- + 2 contact closure inputs
- + Cresnet® wired communication and power

## Low-Cost, High-Function

Provide essential control over AV, lighting, and other functions in these 6, 8, or 12 button Decorator Keypads.



## C2N-DB Decorator Keypads

- + Available in smooth almond, black, and white
- + Match off-the-shelf decorator style faceplates
- + Available in 6, 8, and 12 button configurations
- + Replaceable, custom-engravable buttons
- + Programmable feedback LEDs
- + Cresnet® wired communication and power

## Big Buttons, Bold Appearance

Crestron Designer Keypads deliver enhanced functionality in an attractive wall plate design featuring extra large buttons and optional backlighting.



Shown w/Architectural faceplate option



Shown w/3-gang Designer faceplate option

## CNX-B Designer Keypads

- + Elegant design with large buttons
- + Gangable up to 3 side-by-side
- + Available in 5 textured colors
- + Designer and Architectural faceplate options
- + Available in 2, 4, 6, 8, and 12 button configurations
- + Replaceable, custom-engravable buttons
- + Programmable feedback LEDs
- + Backlit button option
- + WAV file audio feedback
- + Cresnet® wired communication and power

---

Crestron is not responsible for errors in typography or photography. Specifications are subject to change without notice.

3-Series, 3-Series Control System, ADMS, AIR, Ascent, Aspire, Cameo, Core 3, Core 3 OS, Core 3 UI, CresFiber, Cresnet, Crestron, Crestron Studio, Crestron Green Light, Crestron Home, Crestron Mobile, Crestron Mobile Pro, Crestron Toolbox, DigitalMedia, DigitalMedia 8G, DigitalMedia 8G+, DM, DM 8G, DM 8G+, e-Control, Essence, Excite, Fusion EM, Fusion RV, iLux, infiNET, infiNET EX, Instant-Waking, Integrated by Design, Intermedia Delivery System, iPanel, PROCISE, QuickSwitch HD, Quiet Motor Technology, QMT, Rava, RoomView, Smart Sizing, SmartObjects, Sonnex, Sonnex Speaker Protect, V-Panel, V-Panels, VT Pro-e, and the Crestron logo are either trademarks or registered trademarks of Crestron Electronics, Inc. in the United States and/or other countries.

BACnet and the BACnet logo are either trademarks or registered trademarks of American Society of Heating, Refrigerating and Air-Conditioning Engineers, Inc. in the United States and/or other countries. Apple, iPad, iPhone, iPod, iPod touch, and Mac are either trademarks or registered trademarks of Apple Inc. in the United States and/or other countries. Audyssey MultEQ, Audyssey Dynamic EQ, and Audyssey Dynamic Volume are either trademarks or registered trademarks of Audyssey Laboratories, Inc. in the United States and/or other countries. Dolby is either a trademark or registered trademark of Dolby Laboratories in the United States and/or other countries. DTS and DTS-HD Master Audio are either trademarks or registered trademarks of DTS, Inc. in the United States and/or other countries. Kevlar is either a trademark or registered trademark of DuPont in the United States and/or other countries. Android is either a trademark or registered trademark of Google Inc. in the United States and/or other countries. HDBaseT and the HDBaseT logo are either trademarks or registered trademarks of the HDBaseT Alliance in the United States and/or other countries. HDMI and the HDMI Logo are either trademarks or registered trademarks of HDMI Licensing LLC in the United States and/or other countries. Internet Explorer and Windows are either trademarks or registered trademarks of Microsoft Corporation in the United States and/or other countries. Pandora is either a trademark or registered trademark of Pandora Media, Inc. in the United States and/or other countries. SiriusXM and XM are either trademarks or registered trademarks of Sirius XM Radio Inc. in the United States

---

and/or other countries. Somfy is either a trademark or registered trademark of Somfy Systems, Inc. in the United States and/or other countries. Guidebar is either a trademark or registered trademark of Waveguide Consulting, Inc. in the United States and/or other countries. WI-Fi is either a trademark or registered trademark of the Wi-Fi Alliance, Inc. in the United States and/or other countries.

Other trademarks and trade names may be used in this document to refer to either the entities claiming the marks and names or their products. Crestron disclaims any proprietary interest in the marks and names of others.

©2012 Crestron Electronics, Inc.



**Products manufactured in the United States. Printed in USA Doc. 4541 8/12**

All brand names, product names and trademarks are the property of their respective owners. Crestron is not responsible for errors in typography or photography. Other trademarks, registered trademarks, and trade names may be used in this document to refer to either the entities claiming the marks and names or their products. Crestron disclaims any proprietary interest in the marks and names of others.

©2012 Crestron Electronics, Inc., Rockleigh, New Jersey

