



# HOMEOWNERS GUIDE TO LANDSCAPING





## CONTENTS

About Oderings Landscaping .....	4
Benefits of Landscaping .....	5
Things to Consider .....	6
Planning Ahead .....	8
Our Services .....	10
Making Your Ideas a Reality .....	12
- Concept Plan .....	13
- Planting Plan .....	14
- Garden Consultation .....	15
Get in Touch .....	16





## ABOUT ODERINGS LANDSCAPING

A customised garden that is functional, practical and welcoming starts with our experts, who will create a tailored garden space just for you. We provide unique solutions, combining insightful planting with inspiring design to create a practical and functional living space that works for you and your lifestyle.

# BENEFITS OF LANDSCAPING

The landscaping around your home should match your lifestyle; it should be functional and enjoyed by all.



## ADDED VALUE

Professional landscaping can help to boost the overall value of your property. Houses with beautiful landscapes attract more buyers when it is time to sell.

## OUTDOOR

### ENTERTAINMENT AREAS

A well planned landscape will make sure that you have space for all the types of entertainment you enjoy, be it outdoor dining with your friends and family, or a sports space for the kids.

## VISUAL STATEMENT

A home will not look complete unless it has a landscape that complements the house. Landscaping your garden may soften the house walls, highlight certain elements, or hide unattractive features.

## MANAGING WITH MICRO-ENVIRONMENT

A well-planned landscape will ensure you have the right plant selection for the right areas. This plant selection helps to mitigate some of the effects of the environment, for example reducing wind and road noise, and also considers the house position and any drainage or light issues there may be.



## THINGS TO CONSIDER

Before you decide to landscape your property, answering these questions may help you to pin-point the landscape style, features, plants and other elements you want for your garden. This also helps you to think about issues that you would like to address with landscaping, such as privacy, soil conditions, drainage, microclimate, noise, wind, sun or connectivity. Landscape design can help to mitigate them all!

### STYLE OF LANDSCAPE DESIGN

Think about what kind of garden style you would like to see in your own backyard. Do you want a lot of soft textures with perennials and flowers of cottage style gardens, or do you want your garden to be influenced by the nearby coast? Maybe you enjoy a formal look with straight lines and neutral colours. Other design styles include Japanese, tropical, modern, art deco, Mediterranean, and let's not forget the edible garden. The possibilities are endless.

### HOW ARE YOU PLANNING TO USE YOUR LANDSCAPE?

How many kids have you got? Are they dreaming of their own trampoline or do they enjoy running around the lawn playing sports? Do you want a pool, or will you be using your garden for outdoor entertaining? Do you have pets, and do they need a space of their own in your garden scheme?

### HOW ARE YOU PLANNING TO USE YOUR LANDSCAPE?

Are you planning to have family gatherings every weekend in your backyard? Are you dreaming of enjoying a soak in a spa pool under the starry sky? Are you a gardener who loves growing your own fruit and vegetables?







## PLANT OPTIONS

What kind of plants do you like? You don't need to specify the botanical names of the plants, just think about plant features. Do you like a lot of flowers in your garden or are you a two-colour person? Would you like to see a lot of textures in your plants? Do you want to have fruit trees? Would you like to see birds in your garden? Do you want plants that require little maintenance? We can help you to choose the right plants for your needs.



## TIME CONSTRAINTS

Be honest with yourself when we ask how much time you are willing to invest into your garden. You can have a beautiful and functional garden whether you are willing to spend half an hour a month or ten hours. The plant experts at Oderings Landscaping will tailor the plant selection so you get not only what you want, but also what you need.

## MAKE A PRIORITY LIST

It's a great time to start making a list to help you prioritise the elements you want to see in your garden. Call them your 'Must Haves' and 'Nice to Haves'. If you have kids, your 'Must Haves' may include a fort, sand pit or a trampoline, or if you enjoy a soak your 'Must Haves' might include a spa on a deck under a pergola with climbing plants. Your 'Nice to Have' list may include outdoor lighting or raised veggie gardens. Make the list and let's make your perfect garden a reality.



## BUDGET CONSIDERATION

Now that you've listed all your 'Must Haves', make sure you establish a budget. Having your budget set will also help you to prioritise things in your landscape planning.



# PLANNING AHEAD

There are things to check off and consider when building.

## ACCESS

Remember that for the landscape of your dreams to come true, access to your backyard is important. Are there elements, such as fences, that may block off the access to your garden? Can they be erected after the landscaping for the backyard is done?

## GARDEN FEATURES AND WHAT THEY NEED

Some landscape features require electricity or a water supply for them to function. Even if you are thinking of having a spa pool one day, put a conduit under your to-be-built concrete patio. This will make it much easier for a spa pool to be connected in the future. The same applies if you are thinking of irrigation on the other side of your driveway. No one wants to rip up a section of concrete, so think where you may need water, not just now, but into the future. Think of functionality before hardscaping. Now is also the time to put in outdoor power points and outdoor water access with taps, making sure you have access to these at both the front and back of the section.

## MAINTENANCE

Do you have elements that would be easier to mow with a mowing strip around them?  
Do you want to have boxing around your garden areas for easy maintenance?  
Consider these things now to make life easier later.







## **IRRIGATION**

Do you want irrigation to be installed? Now is also the time to put in outdoor water access with taps and conduits. Make sure you have water that is accessible at both the front and the back of your section.

## **POWER**

It may not seem important now, but if you intend to put a spa pool, outdoor lighting or even a water feature into the garden at some stage, you can save time and money by having outdoor power points installed when building.

## **SERVICES**

Don't forget the 'untidy' things that you need to have in your garden. Areas for wheelie bins, a clothesline, the garden shed, and the unsightly heat pump units! A well-planned landscape design can help to find the right place for all these services without them being 'eyesores' in your garden.

## **COUNCIL REGULATIONS/COVENANTS**

Keep in mind the do's and don'ts for your district and subdivision. Let us know what they are. Are there any easements running within your property? Are there any underground services?



## OUR SERVICES

### GROUND WORK

Preparation is the key with any good garden project. Drainage, soil levels and soil replenishment must all be considered.

### LAWNS & LAWN PREPARATION

From start to finish, Oderings can create a lawn your neighbors will envy. With all lawns, preparation is the key. We offer Ready Lawn, Hydro Lawns, artificial lawns or good old grass seed.

### INSPIRING DESIGN

Whether you want a full landscape plan, a garden consultation or plant placement, we can help you find your ideal garden style. We aim to create a garden and outdoor living space that is an extension of your home and interests.

### “HARDSCAPING”

This can include fences, paths, decks, patios, paving, raised garden beds, steps, stepping stones, gates, garden edging and much more. Oderings Landscaping take the hassle out of garden design and implementation.

### PLANTS OR “SOFTSCAPING”

One of the reasons you should choose Oderings Landscaping to enhance an existing space or create a new garden is that we are the plant experts. Certain plants look great with other contrasting colours; texture and leaf colour can make just as much impact as flowers; and colour and flowers can still be low maintenance. We select plants that suit the space and choose plants you will be able to maintain and care for. We can then help by doing a plant placement service, or we can do the hard work for you and plant your fabulous new selection.

### FREE MEASURE & QUOTE

Whether you are working off a plan or just ideas that you have for your garden, you can get an itemised quote with us. With itemised quotes you can stage your landscaping if and where needed. Always remember your covenants and council regulations, as some subdivisions may require you to have certain landscaping done first.





## **IRRIGATION**

One of the biggest mistakes gardeners make is not considering irrigation. Imagine with just the touch of a button, your lawn, garden and veggie patch are watered for you. Or even set it and forget it. Irrigation is a vital step to include in your plan.

## **GARDEN MAINTENANCE**

It's easy to fall behind in the garden, especially when time is limited, or we have busy families. Let us help and maintain, or even prune and trim your overgrown space. You may even want a clear out, and a plant placement service to have a manageable garden space. We can do regular garden maintenance for you, or just when you need it.

## **GARDEN CONSULTATIONS AND PLANS**

Whether you are at an initial stage of building, need a plan for developers approval, want help to finish a space, or could use some planting advice, an Oderings Landscape Architect can help. Getting a landscape plan is always a good idea even if you are not planning to landscape your whole garden in one go. With a landscape plan, you can stage and plan your budget accordingly.





## MAKING YOUR IDEAS A REALITY

We hope you found the previous sections of this booklet helpful in shaping the ideas for your landscape. Remember to create a list of the ideas, so every want and need is accounted for!



To help you bring your landscaping ideas to life, book a design consultation with us. We provide landscape plan consultations, garden consultations as well as free measure and quotes. To help you bring your landscaping ideas to life we have several options available. Whether you have an existing garden that needs a revamp or require a full Landscape Concept and Planting Plan we have the expertise to design the space of your dreams.

100x200mm Kwila planter  
800mm tall  
450mm tall Kwila seal attached

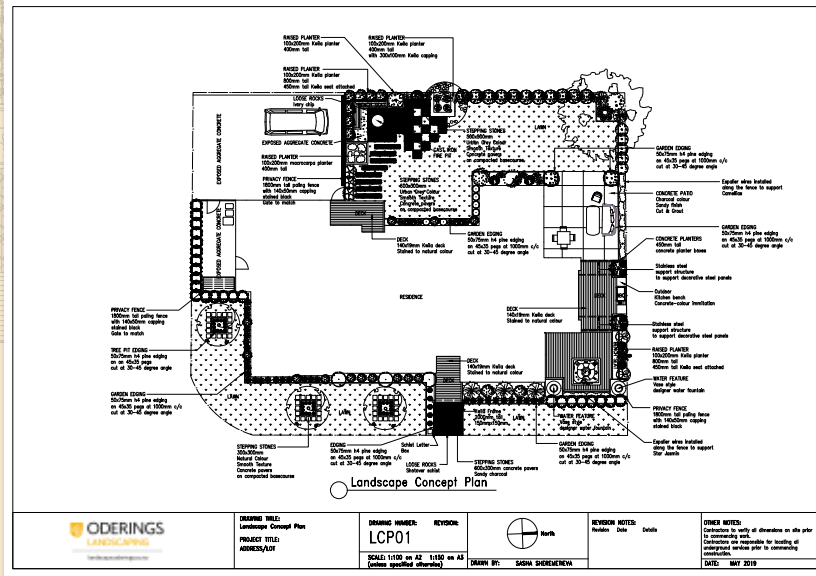
LOOSE ROCKS  
Ivory chip



EXPOSED AGGREGATE CONCRETE

RAISED PLANTER  
100x200mm macrocarpa planter  
400mm tall

PRIVACY FENCE  
1800mm tall paling fence  
with 140x50mm capping  
stained black  
Gate to match



GARDEN EDGING  
50x75mm h4 pine edging  
on 45x35 pegs at 1000mm c/c  
cut at 30-45 degree angle

Espalier wires installed  
along the fence to support  
Camellias

CONCRETE PATIO  
Charcoal colour  
Sandy finish  
Cut & Grout

GARDEN EDGING  
50x75mm h4 pine edging  
on 45x35 pegs at 1000mm  
cut at 30-45 degree angle

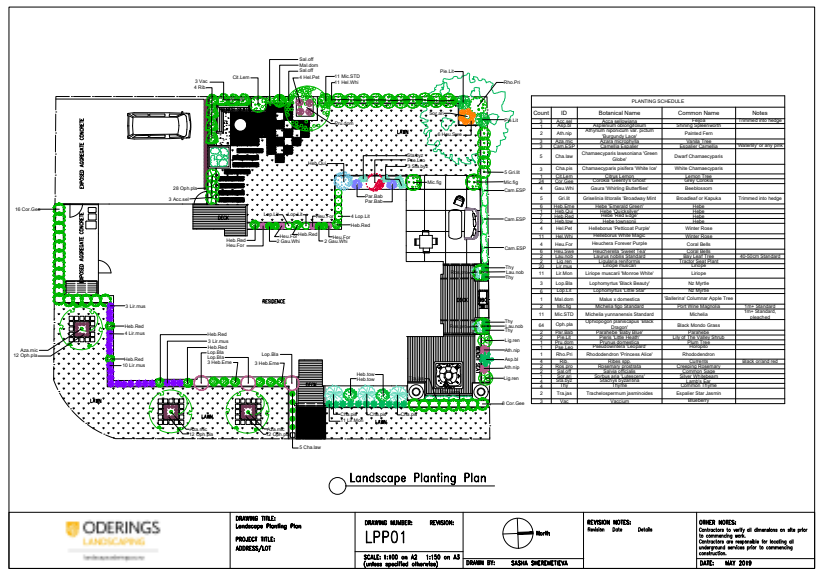
CONCRETE PLANTERS  
450mm tall  
concrete planter boxes

Stainless steel  
support structure  
to support decorative steel panels

Outdoor  
Kitchen bench  
Concrete-colour imitation

# CONCEPT PLAN

A Concept plan is ideal for new sections or situations where you want to change large areas of landscaping. This plan is a technical scaled drawing that includes the gardens location and all hardscaping feature of the proposed landscape; such as patios, decks, raised planters, garden edging, fencing, etc. A concept plan shows the precise placement of each hardscape element, material specifications and finishes. A Concept plan is usually done first to establish the placement of all hardscaping and is then followed up by a planting plan.

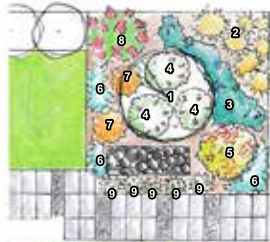


# PLANTING PLAN

A Planting plan is done in conjunction with a concept plan but can also be done independently. This plan would suit situations where hard landscaping is in place with no or little plants. A Planting Plan is a technical scaled drawing that includes planting selection, botanical and common names, plant placement and a planting schedule.

A Planting Plan helps to ensure that correct plants are chosen for the conditions, takes the mature plant sizes into account and ensures the correct blend of colour choices to remedy or emphasise certain features of the area and the house.





1. Existing Tree
2. Existing Libertia
3. 3-4x *Lithodora 'Grace Ward'* to contrast with yellow Libertia
4. 3x *Hebe 'First Light'* - low growing hebe with lilac colour flower
5. *Erica 'Winter Fire'* for winter colour
6. *Stachys byzantina* - Silver foliage to complement red tones
7. *Pseudowintera 'Cherry Rip'* - red foliage all year round
8. *Callistemon 'Matthew Flinders'* - Autumn colour
9. *Dianthus* (colour of choice) or *Armeria 'Corsica'* for spring colour

All suggested plants are evergreen.



Garden consultation notes



1. Remove existing *Munia lutea* and replace with *Acer palmatum 'dis. Virens'* (Japanese Weeping Maple)
2. *Hosta 'Hortensia Blue'* or any other Hosta
3. *Nandina 'Gulf Stream'*
4. *Inoperata cylindrica 'Red Baron'* (Japanese Blood Grass)
5. *Ophioglossum 'Black Dragon'*
6. *Festuca glauca* (Blue Oat Grass)
7. *Heuchera 'Froster Purple'* or any other purple Heuchera
8. *Lomandra 'Evergreen Baby'*
9. Add a few bigger boulders to the existing tallings to create support the 'Japanese' theme of this garden

Garden Consultation Notes

## GARDEN CONSULTATION

If you have an existing garden and want to add or revamp the space to suit your lifestyle then a Garden Consultation is what you need. We will meet you onsite to view your existing garden, discuss your needs, likes and dislikes. We then put together recommendations for any replanting, plant maintenance and provide artist's impressions (including a planting list) of how your new space could look.



## GET IN TOUCH

Not only do we tailor a garden just for you, but we create a service to fit. This means we can do as little or as much as you like, in stages or all at once. These stages are Consult, Design, Create, Live, Maintain.

**MOBILE:** 021 913 747

**EMAIL:** [admin@oderingslandscaping.co.nz](mailto:admin@oderingslandscaping.co.nz)  
[www.oderingslandscaping.co.nz](http://www.oderingslandscaping.co.nz)

