

HONDA J2534 Rewrite Basic User Guide

Legal Terms and Conditions of the Honda Reprogramming Software

The following statements describe American Honda Motor Co., Inc.'s (hereafter also referred to as "Honda") policies and terms of use for Honda's reprogramming software. By using this software you acknowledge and agree to all terms and conditions stated herein. If you do not agree to these terms, do not use this software.

- You are responsible for proper reprogramming of Honda/Acura control modules.
- All problems and complaints that may occur from the use of the J2534 devices are the sole responsibility of the reprogramming device manufacturer.
- Honda will not provide technical support.
- Not all Honda/Acura models are reprogrammable. Refer to www.serviceexpress.honda.com for a list of reprogrammable models.
- All reprogrammable Honda/Acura vehicles comply with the SAE J2534-1 standard. You are responsible for using a compatible J2534 reprogramming device. Contact the reprogramming device manufacturer to confirm Honda/Acura compatibility before use.
- Honda will not be responsible for damaged control modules.

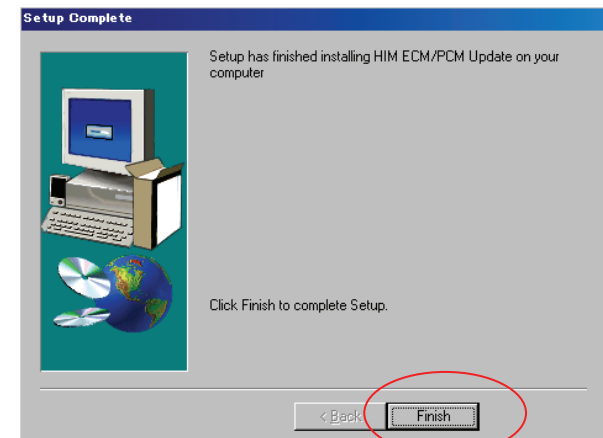
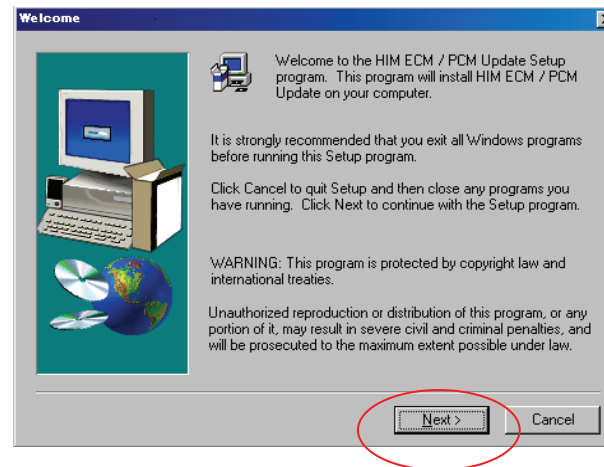
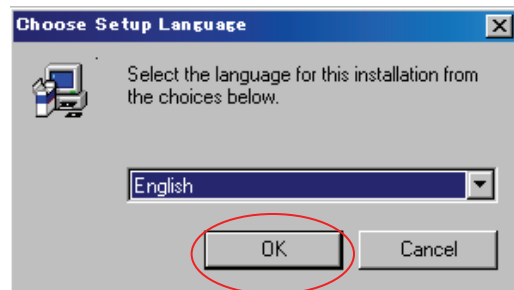
HONDA MAKES NO WARRANTIES OR REPRESENTATIONS, EXPRESS OR IMPLIED, IN FACT OR IN LAW, INCLUDING THE IMPLIED WARRANTIES OF MERCHANTABILITY AND FITNESS FOR A PARTICULAR PURPOSE. IN NO EVENT WILL AMERICAN HONDA BE LIABLE FOR INCIDENTAL, SPECIAL OR CONSEQUENTIAL PENALTIES OR DAMAGES, INCLUDING LOST PROFITS.

Before installing the HONDA J2534 Rewrite Software, please ensure the following:

1. The interface pass-thru device is fully SAE J2534 compliant.
2. The SAE J2534 compliant pass-thru device software and or driver is already installed to your PC.

Installing the HONDA J2534 Rewrite Software

1. Double click Setup.exe to install the applications.
2. Select Setup Language.
3. Follow the on-screen instructions to complete the installation.

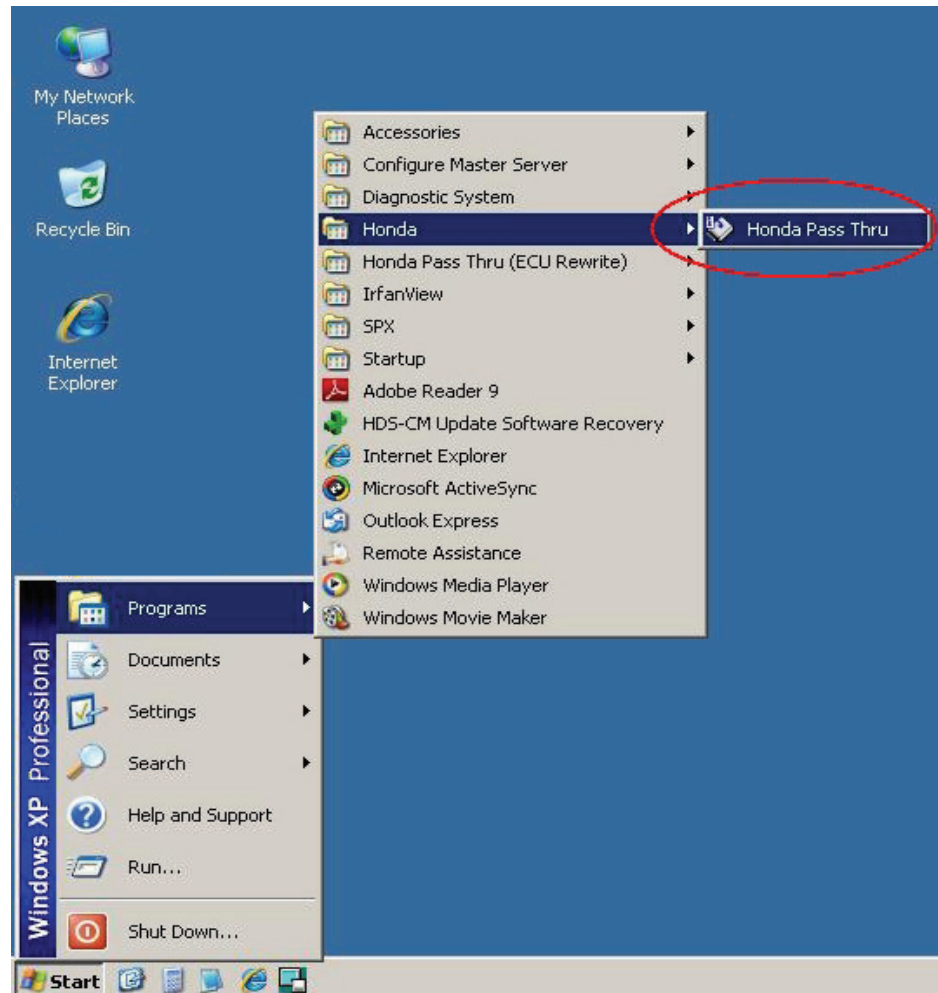


At the Vehicle

4. Ensure that the vehicle battery is fully charged and or use an external battery jumper pack.
5. Turn the Ignition switch ON (II).
6. Connect the J2534 compliant pass-thru device with the vehicle's DLC (J1962).
7. Connect your J2534 compliant pass-thru device with your PC.

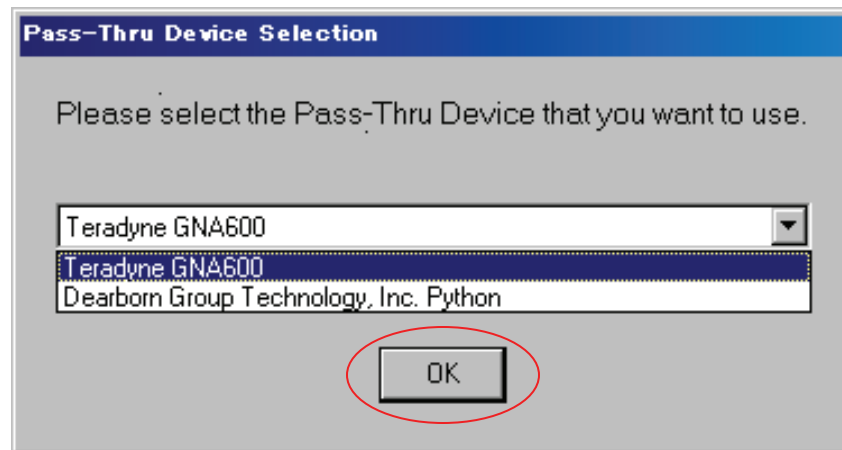
Starting up the Applications

8. Start Honda
Control
Modules/ECU
Update Software
from the start menu.



Pass-thru Device Selection

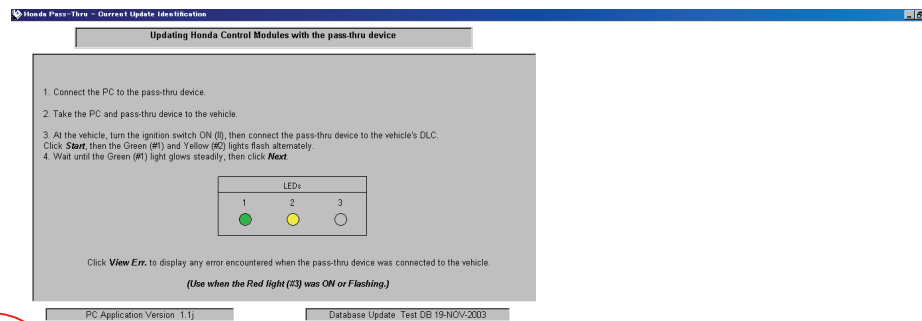
9. Select your pass-thru device and click “OK.”



Note: This selection menu will not appear if only one pass-thru device driver is installed to the PC.

Welcome Screen

10. Click “Start” to begin reprogramming procedures.



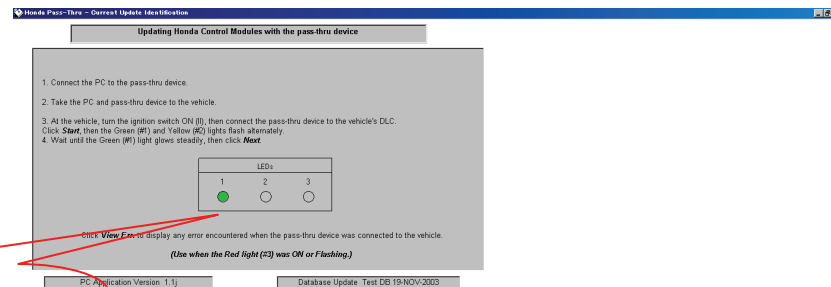
Start



Read Program ID

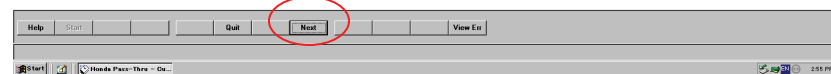
11. When reading the Program ID process completes, the flashing Green LED button stays solid.

12. After confirming the Green LED is solid, click “Next.”



Solid Green LED

Next

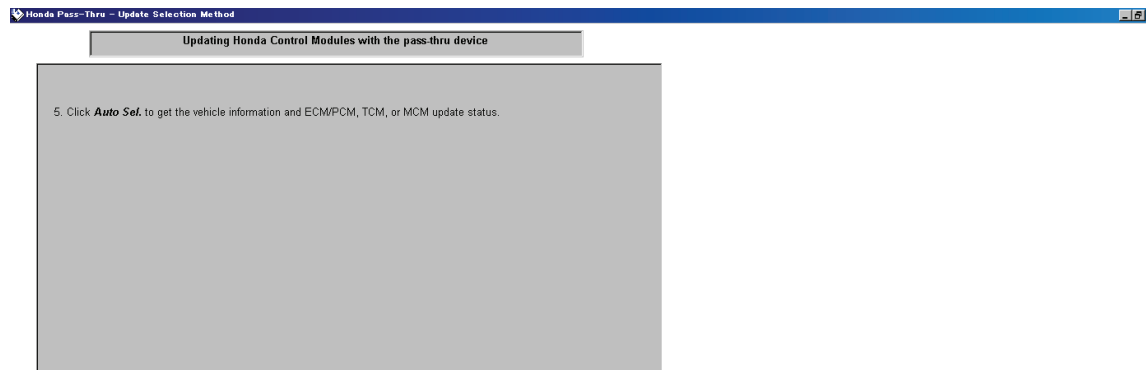


Important

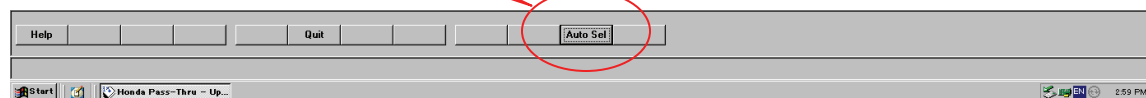
- Do not turn off the ignition during the reprogramming procedures unless you are directed to do so.
- If the Red LED button should appear, click “ViewErr” to read the Error Screen. Follow the on-screen recovery instructions.

13.

Click “AutoSel.”

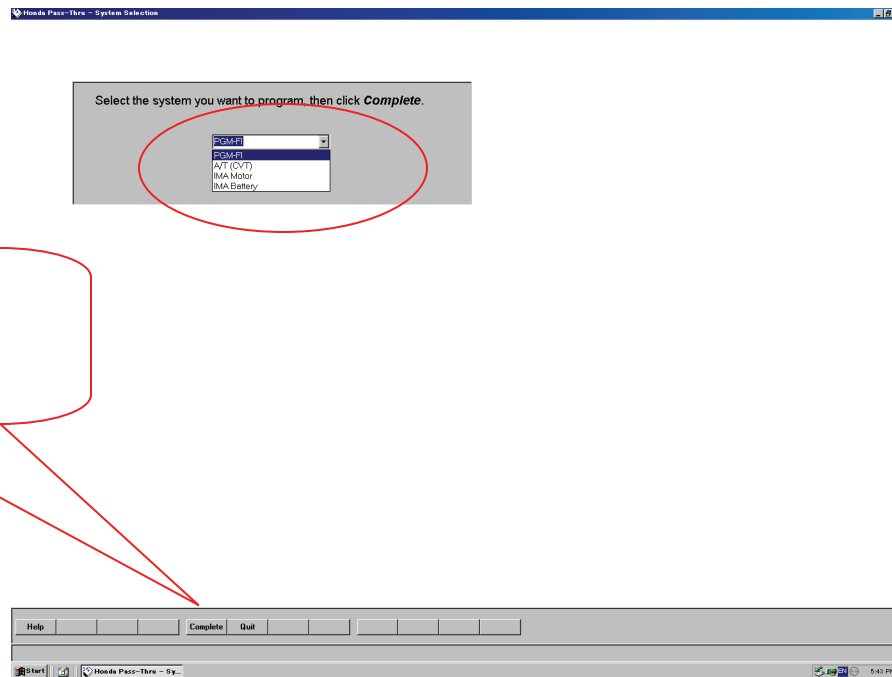


AutoSel



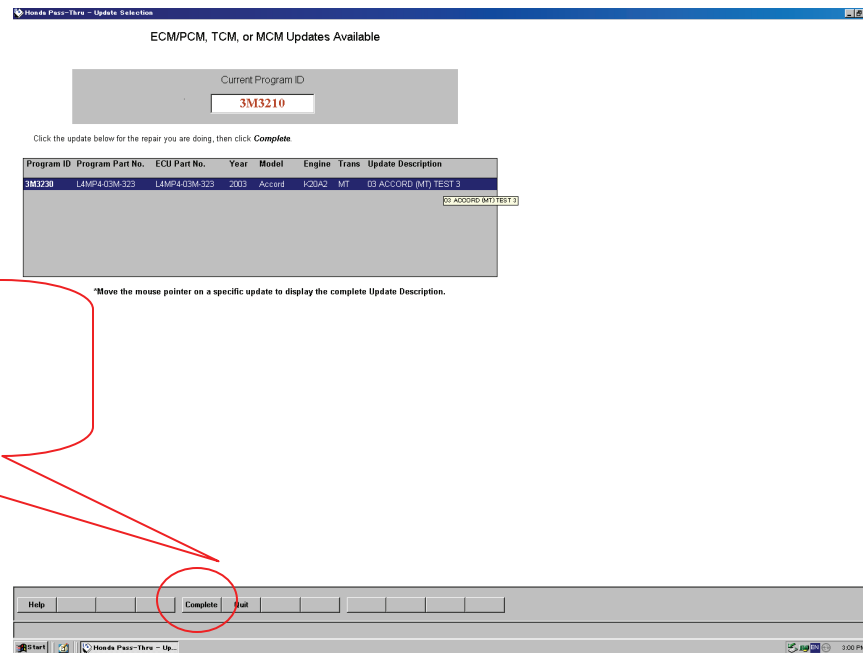
System Selection

14. Select the system.
15. Click “Complete.”



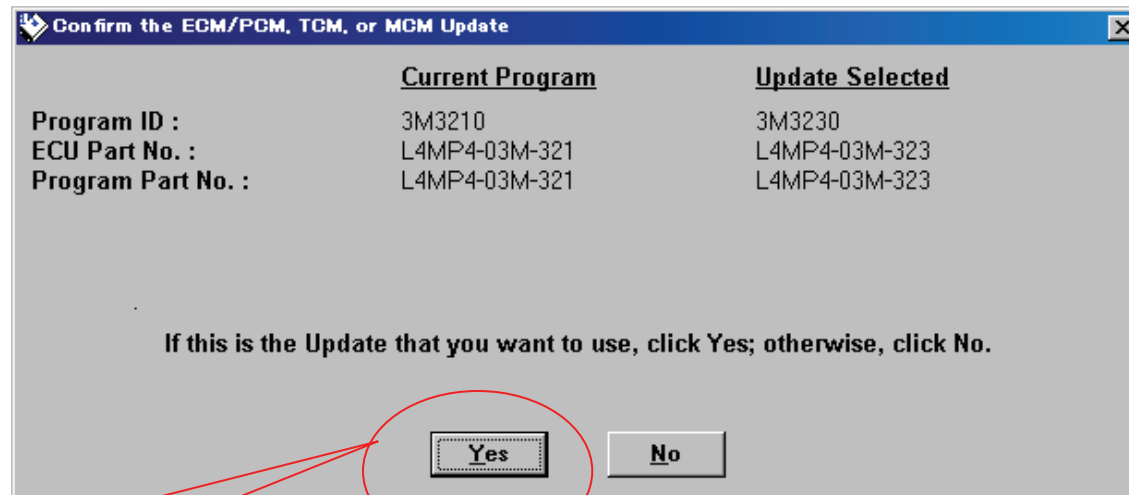
Update Selection Screen

16. Select the update with vehicle details.
17. Click “Complete.”



Confirmation Dialog Box

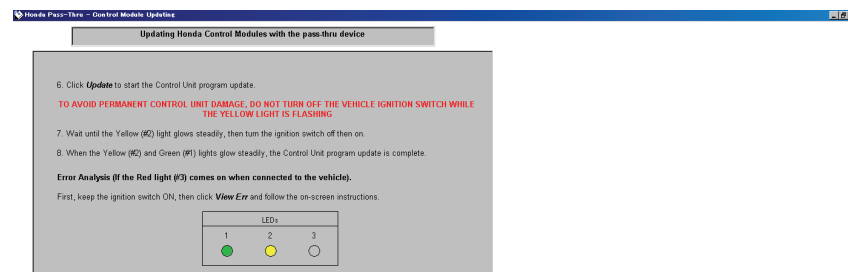
18. Click “Yes” to start downloading.



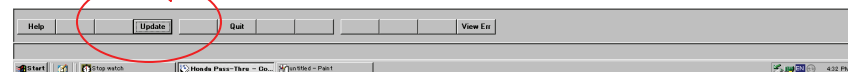
Yes

Reprogramming the selected target file into the ECU via Pass-thru Device

19. Click “Update” to Start reprogramming.

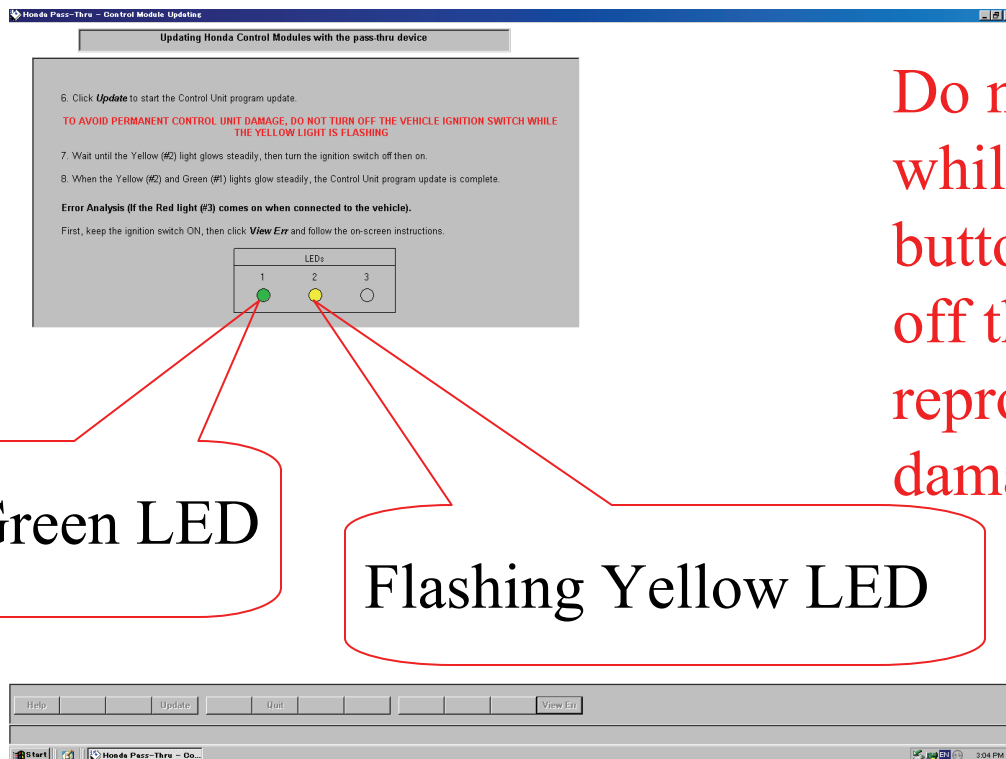


Update



Reprogramming the selected target file into ECU via Pass-thru Device

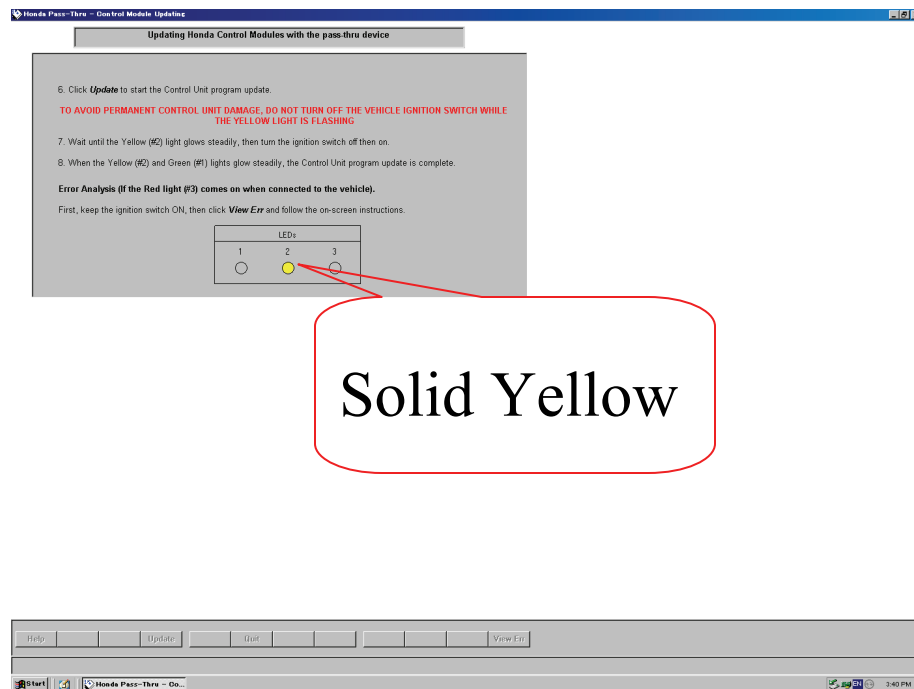
20. Reprogramming Screen



Do not turn off the ignition while the Yellow LED button is flashing. Shutting off the power during reprogramming may cause damage in ECU.

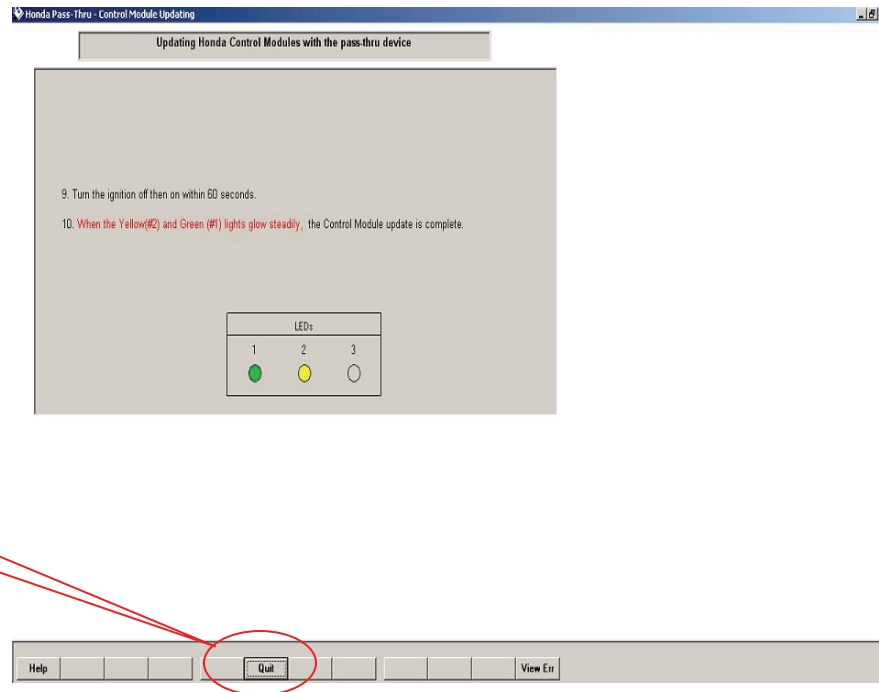
Ignition Cycle Screen

21. When the Yellow LED stops flashing and remains solid, turn the ignition switch “Off” then back to “On” within 60 seconds.



Reprogramming Completion Screen

22. Click “Quit” to return to the welcome screen.”



Reprogramming Completed:

- After the completion of reprogramming procedures, you have to go along with the following instructions to conduct idle learn.
- Please refer to the procedures shown in the next page.

Idle Learn Procedures

1. Ensure the vehicle is in “Park” or “Neutral” position.
2. All electrical components (A/C, audio, rear window defogger, light, etc.) are switched off.
3. Turn the ignition switch ON(II), and wait until the radiator fan is switched on twice. Warm up the engine for two more minutes.
4. Idle for about 5 minutes with the throttle fully closed.

NOTE: The running time of the radiator fan is excluded from the estimation time of 5 minutes.

End of Document