

The Hope Group

A SunSource Company



**HYDRAULIC, ELECTRONIC, MECHANICAL,
AND FLUID PROCESS REPAIR SERVICES**

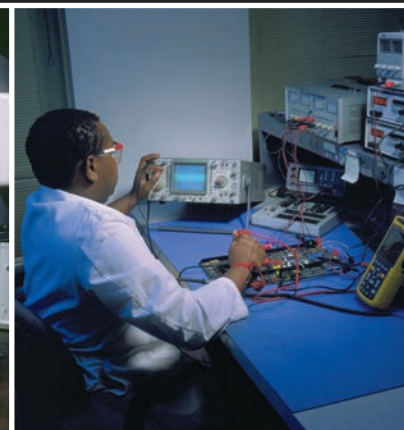
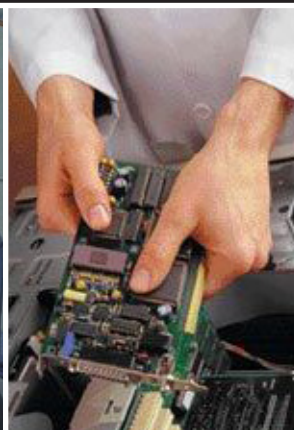


The Hope Group is excited to announce that we have joined forces with SunSource, an industry leader in industrial component and control repair. They are, like us, a hydraulic, pneumatic, and control packages distributor.

For over 85 years, SunSource and its companies have provided quality components, designed and engineered systems, and maintained a high level of customer service to the mobile hydraulic and industrial markets. Like The Hope Group, SunSource has positioned themselves as one of the leaders in the industry. Your Hope Group sales reps are committed to providing the products, services and support for a long successful relationship.

We remain committed to providing you these great services:

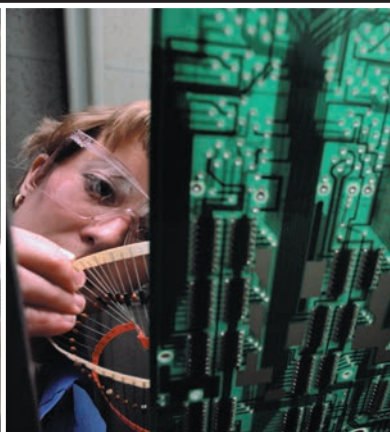
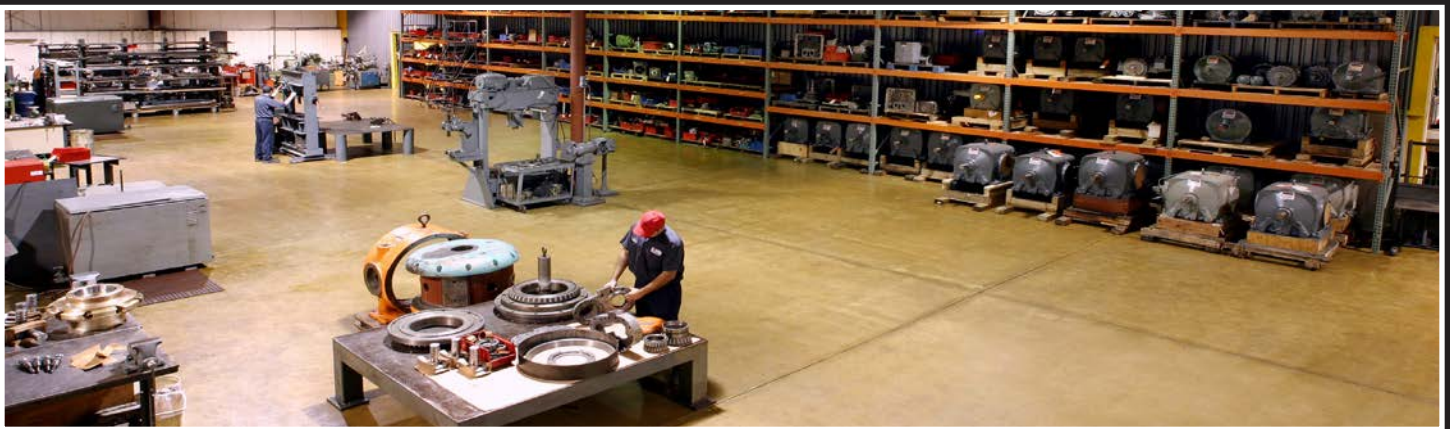
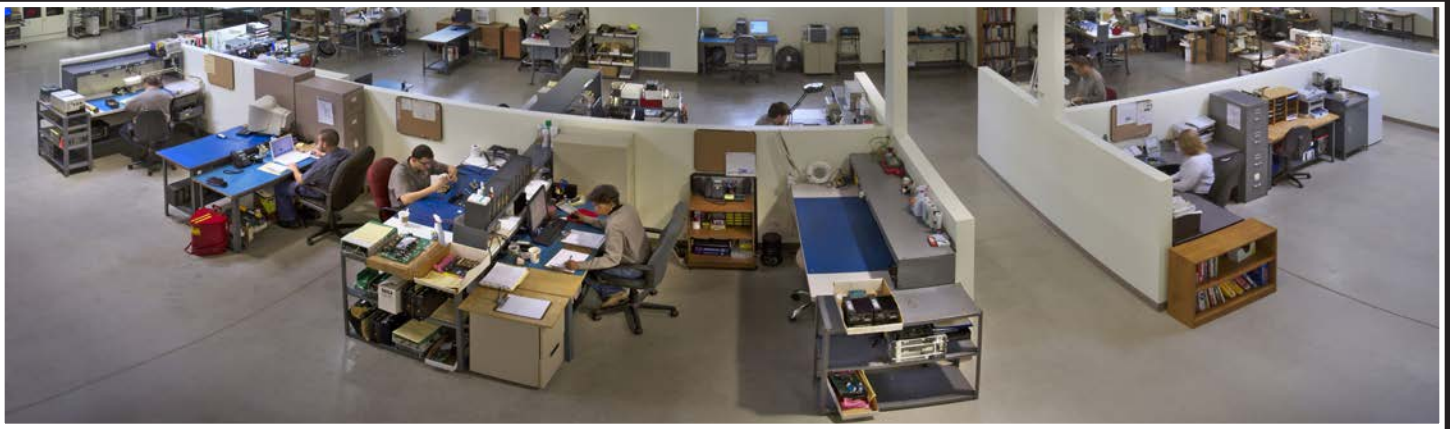
- 1-Year Operational Warranty on Every Repair
- Emergency expedited service available
- Free Evaluations
- Experienced Technicians Using OEM Parts
- 10 Day Turnaround on Standard Repairs
- Exchange Programs
- Testing of Every Repair



The Hope Group and SunSource, your source for fluid power

Since 1979, SunSource has been focused on providing fast, reliable and economical hydraulic component repair services. As our business has grown, it has also evolved to include comprehensive electronic control and component service repair.

SunSource's Chicago headquarters and main service center has recently been expanded to over 60,000 square feet. When combined with our regional facilities, together we have over 100,000 square feet of strategically located service centers to serve you better.



As an ISO 9001 certified repair facility, you can rest assured that your repair will be performed by highly trained, professional technicians with years of experience and an uncompromising attention to detail. We are so confident in their abilities, and our processes, that we provide a 1-year operational warranty with every repair. That is, we will honor our workmanship for one year after the date you install your repaired component—regardless of how long it sits on your shelf.

No other service and repair organization can offer you the in-depth product knowledge, and experience that has made us one of the most successful organizations in the industry.

HYDRAULICS DEPARTMENT

The most complete and comprehensive hydraulic pump, motor, and cylinder repair organization in the USA.

Our service center has over 35 years experience in the remanufacturing and repairing of hydraulic components from nearly every OEM in business over the last half century. We have developed an in-depth series of procedures to catalog, evaluate, estimate, repair, test and return ship your equipment with the highest quality craftsmanship and the quickest turnaround.

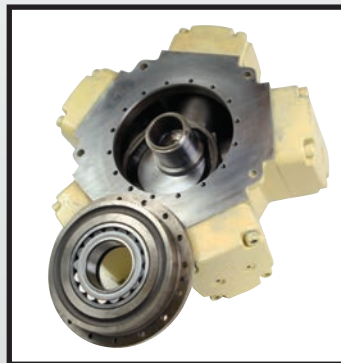
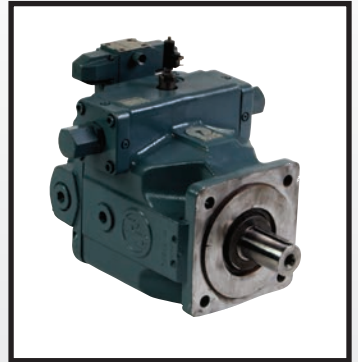
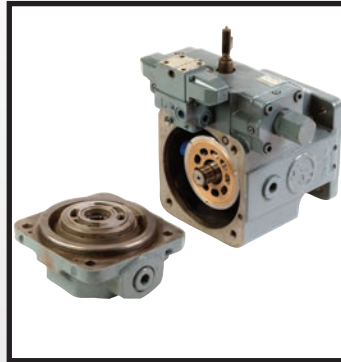
- STEP 1:** Customer's units are assigned a unique job number and all OEM information is recorded.
- STEP 2:** Units are completely torn down by highly trained technicians for evaluation. The hydraulic technicians analyze the components to look for signs of wear, excessive heat, and contamination, in effort to hypothesize how this component failed.
- STEP 3:** Once it has been determined which parts require replacement, the parts are sourced, and a quote is generated for the customer. No work is performed until we receive the approval of the customer.
- STEP 4:** Upon approval, the parts are ordered and the repairs are performed.
- STEP 5:** Unit is tested on our custom hydraulic test stands and the unit's performance is measured against OEM specifications. Units do not pass test if they do not meet OEM tolerances.
- STEP 6:** Unit is securely packaged or banded to a skid for shipment.

All parts and materials guaranteed for one full year after installation. Our workmanship and labor are unconditionally guaranteed.



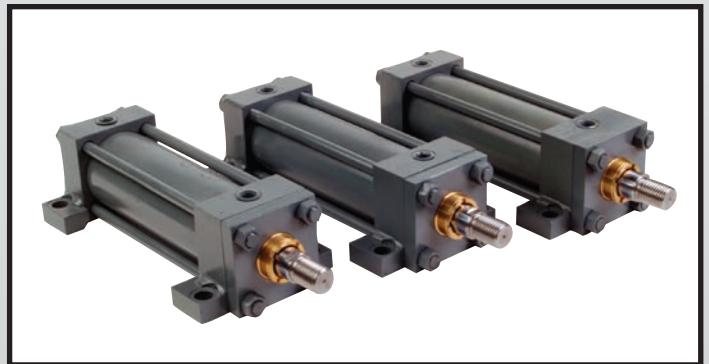
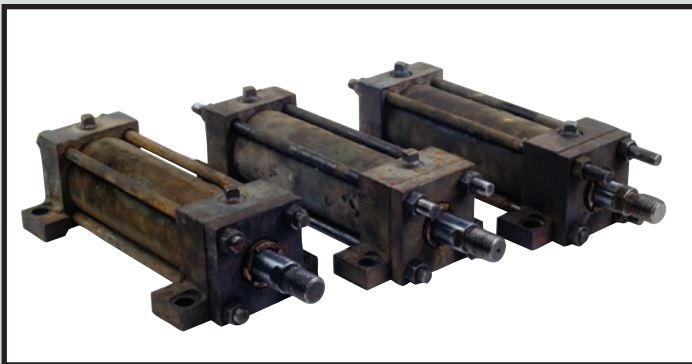
PUMPS & MOTORS

Our repair centers service hundreds of hydraulic pumps every week. Every unit that comes in is completely torn down and evaluated so that we can determine why the component is no longer operating effectively. Damaged parts are replaced or remanufactured, and the unit is rebuilt. The final product is tested to confirm that it performs to OEM-specific standards before being painted and packed for return.



CYLINDERS

We can repair and remanufacture all of your hydraulic cylinders. An in-house machining department cuts down the lead time of repairs significantly, and allows us to produce parts for your damaged cylinders. We have the capability to manufacture new rods, pistons, bushings, and tubes. Every cylinder we repair leaves here operating like a brand new cylinder.



VALVES

When you need servo valve repair, look no further!

Our service center has been repairing all major brands of servo valves, proportional valves, and directional valves for over 35 years. Our skilled technicians average over 15 years experience and will thoroughly test, evaluate, and repair your valve to OEM specifications in under 5 working days. Of course, every repair comes with our 1-year operational warranty.

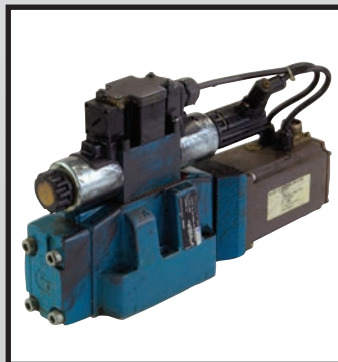
SERVO VALVES



DIRECTIONAL VALVES

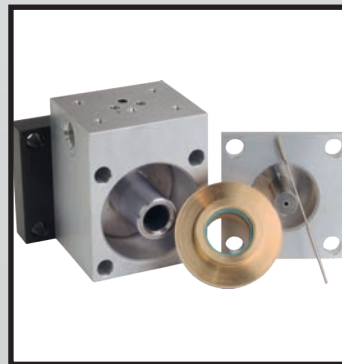
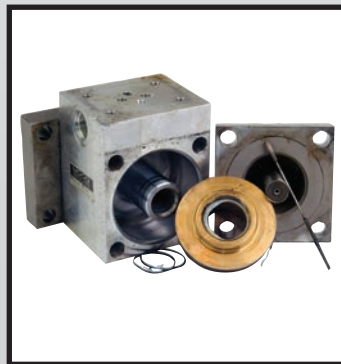
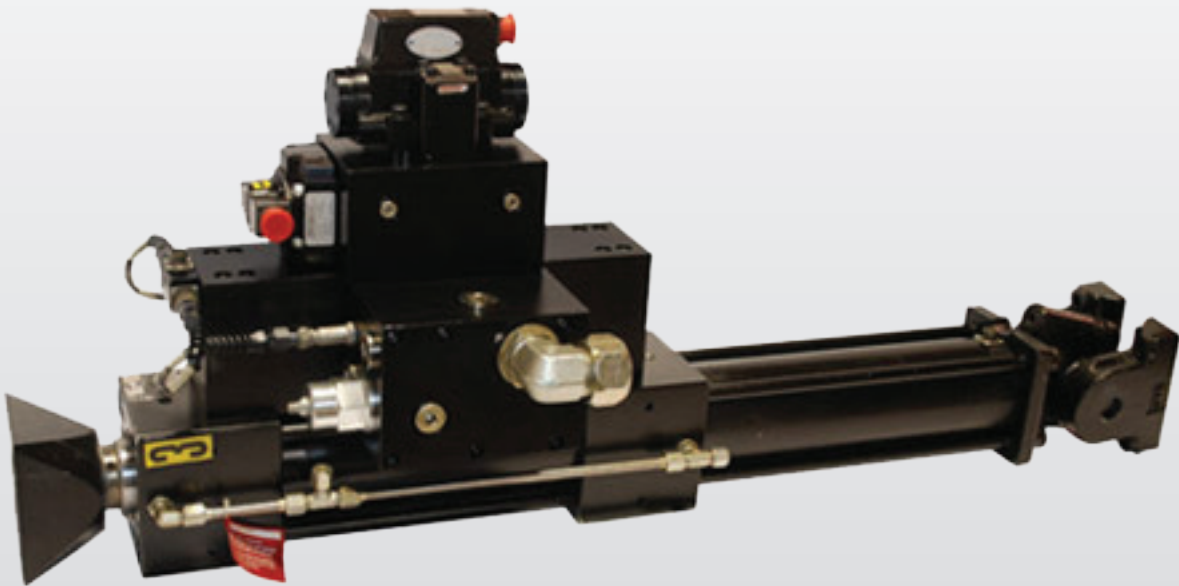


PROPORTIONAL VALVES



PRECISION ACTUATORS

We service all makes and models of rotary and linear precision actuators. We have repaired actuators as small as 2.3 kip and as large as 250 kip for many different applications within the testing industry. All incoming units are thoroughly inspected, cleaned, diagnosed, and repaired by skilled technicians who average over 20 years of experience. A typical repair of a precision actuator includes such work as: grinding and chroming the rod, honing the tube, installing new seals, calibrating the LVDT and testing the actuator with its servo valves. As with every repair, all actuators are returned with our 1-year operational warranty.



FLUID PROCESS REPAIR

The Fluid Process Division proudly serves the Automotive, Biofuels/Ethanol, CAFO Biogas, Chemical, Industrial, Sanitary, Food & Beverage, Pharmaceutical, Pulp & Paper, OEM, Municipal Water & Wastewater Treatment Markets. We have several facilities available to service and repair your pump and related equipment. Our repair operations are fully equipped with machinery capable of handling every step of the process, including:

- Complete Refurbish and Reconditioning
- Machining & Welding
- Dynamic Balancing
- Fabrication & Assembly
- Pump and Motor Alignment
- Part Reproduction for Damaged or Obsolete
- Part Replacement

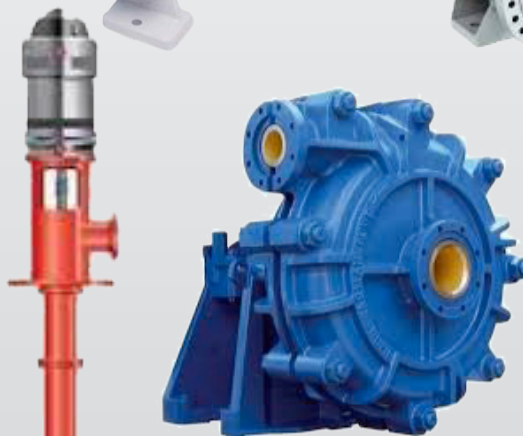
FLUID PROCESS PUMPS

- ANSI Pumps
- Double Suction Pumps
- Multi Stage Pumps



VERTICAL & HORIZONTAL PUMPS

- High Temp / Hot Oil Pumps
- Boiler Feed Pumps
- Slurry Pumps
- Vertical Turbine Pumps



POSITIVE DISPLACEMENT PUMPS

- Progressive Cavity Pumps
- Screw Pumps
- Sanitary Pumps
- Paint Pumps



Specializing in repair of: Ampco, ARO, Brinkmann, Dean, Durco, Flowserve, Fybroc, Gorman-Rupp, Goulds, Hydra Cell, Ingersoll Rand, Iwaki, IMO, Knoll, Liestritz, Mono, Moyno, Peerless, Sandpiper, Scott, Sulzer, Tarby, Tuthill, Yamada, Viking, Waukesha, Wilden, and many more.

CENTRIFUGAL PUMPS

We have the capability to remanufacture your centrifugal pump to like new condition – any size, any brand. We offer complete inspection of shaft, frame, bearings, packing, stuff box, impeller, volute, and front cover to ensure a high quality repair.

We service all brands of pumps including: Goulds, Flowserve, Worthington, Ingersoll-Rand, Byron Jackson, Johnson, NOV - Mission, Gardner Denver, Gorman-Rupp, O'Drill-MCM.



VACUUM PUMPS

We understand the value of keeping your equipment running, so when you are having issues with your vacuum pump, you can rely on us to service your unit to minimize your downtime. We specialize in multiple kinds of vacuum pumps found throughout the manufacturing industries including rotary vane, liquid ring, scroll, piston and lobe.

We service all brands of pumps including: Gardner Denver, Nash, BOC Edwards, Kinney, Leybold, Stokes, Varian, Siemens, Somarakis, and many more.



BLOWERS

Our service centers specialize in many types of blower reconditioning, including Positive Displacement, and Centrifugal. We provide in-house machining and dynamic balancing equipment to ensure peak performance of your unit.

We specialize in the repair of these brands: Roots, Siemens, Dresser, Leybold, and many more.



Machining



Welding



Parts Washing



Sand Blasting



ELECTRONICS DEPARTMENT

For over 30 years, our service centers have been repairing industrial electronics. If it's Drive, Power Supply, Touchscreen or PLC we have seen it and can repair it.

DRIVES

Our Electronics Repair Department specializes in industrial drive components and their applications. We have the expertise and equipment to clean, check and dynamically test your component to replicate its malfunction, and the skilled technicians to fix it. Once the unit is approved for completion it is repaired and load tested on our custom built load tester to simulate your application. All motor drives are returned with a service report and a 1-year operational warranty.

We service all major brands including: Allen Bradley, Reliance, GE, Indramat, Siemens, and ABB.



PLCs

PLCs have become the nerve center of the modern manufacturing facility, and it only takes one board failure to bring production to a halt. We not only offers emergency repair service but in many cases we can offer an exchange board for immediate delivery. Our standard 10 day service covers all major brands of PLCs including: Allen Bradley, GE, Modicon, Texas Instruments, and Siemens.



POWER SUPPLIES

A failure in a power supply can stop an entire line. Rely on us to clean, static-check, and load test your power supply. Upon your approval repair time is usually 10 days or less and emergency service is always available. All power supplies are returned with a service report and a 1-year operational warranty.



HMIs

The convenience of Human Machine Interface control panels has made them indispensable on the plant floor. Unfortunately, they are one of the most fragile components in your entire system. We have a staff of trained technicians who will clean, static-check, and test your HMI to evaluate its condition and, upon approval, repair and test your unit. Every HMI carries our 1-year operational warranty.



SERVO MOTORS & ENCODERS

SERVO MOTORS

Our service centers have been focusing on servo and spindle motor repair as a core competency since day one. Every incoming unit is thoroughly inspected, diagnosed, and repaired by skilled technicians. Normal turnaround is 10 days or less on most repairs depending on the failure of the motor. All motors are dynamically tested prior to return, and come with a service report letting you know what was repaired and a 1-year operational warranty.



ENCODERS

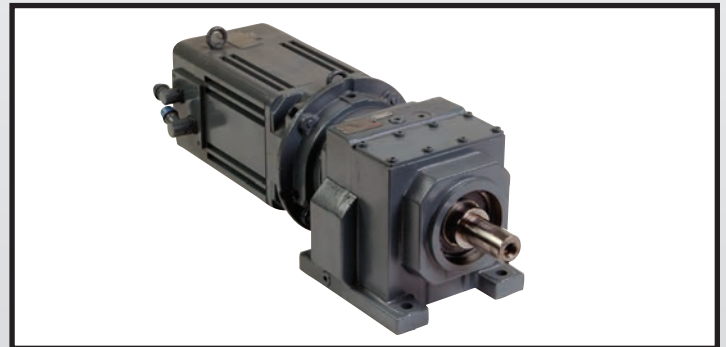
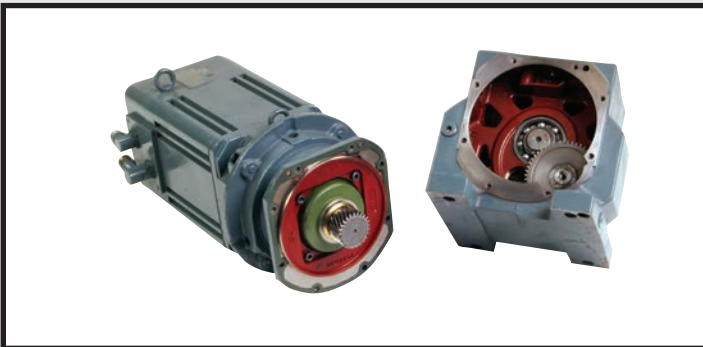
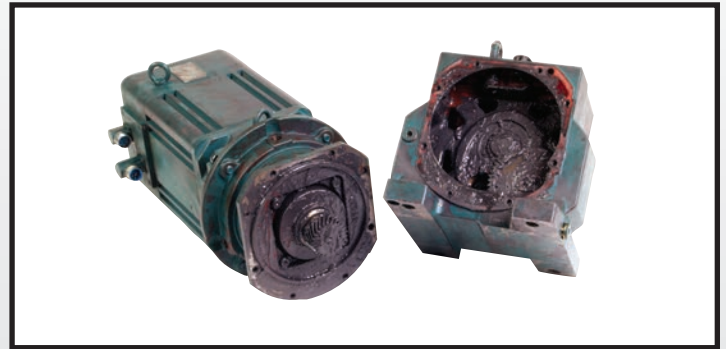
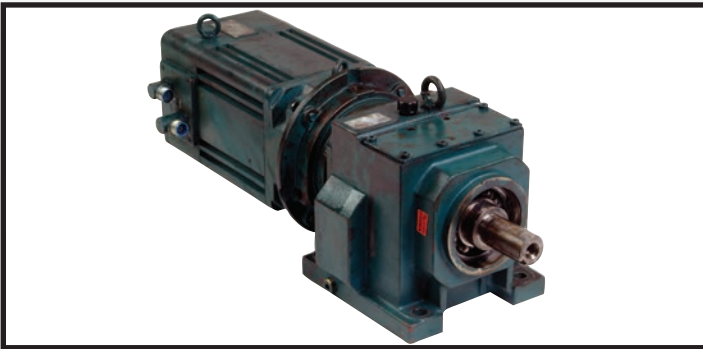
With over 30 years of experience, our service centers are the industry leading source for all your encoder repair needs. PSH has experience with over 150 brands of encoders, pulse coders, pulse generators, resolvers and tachometers. We can offer complete electrical and mechanical repair on your encoders and all repairs are fully tested and backed with a 1-year operational warranty.



GEAR BOXES & SPINDLES

GEAR BOXES

Rely on us when it comes to testing and remanufacturing gear boxes, and spindles. Our customers have come to expect the same level of quality and service that we have delivered throughout three decades of hydraulic and electronic component repair.



SPINDLES

As our reputation for quality and service has grown, so too have our capabilities. We have the facilities to analyze, balance, rebuild, repair, and test nearly every brand of spindle on the market today.



WELDERS & WELD CONTROLS

Our certified technicians can repair your welder, or weld controller, and bring your equipment back up to full OEM-specifications. With our load testing capabilities and our attention to detail we can ensure your unit's peak performance.

We provide expert service to the following welder and weld control brands: Miller, Lincoln, Yaskawa Motoweld, ESAB, Panasonic, OTC Daihen, WTC Weltronic, Dengensha, and Robotron.



LIGHT CURTAINS

All light curtains are thoroughly evaluated and rigorously tested by our experienced technicians. After the initial test, every unit is then duration tested for at least 8 hours to verify the proper operation of the unit before it's returned to you.

Common brands include: STI, Sick Optic, Banner, Dolan Jenner, and many more.



TEACH PENDANTS

When your teach pendants fail, you need them repaired fast, so your vital equipment isn't sitting idle any longer than necessary. We system test your teach pendant on the matching robotic controller. We stock many replacement membranes, E-stops, and displays for prompt service.



POWER SUPPLIES

A failure in a power supply can stop an entire line. Rely on us to clean, static-check, and load test your power supply. Upon your approval repair time is usually 10 days or less and emergency service is always available.



ROBOTICS REPAIR

ROBOTICS REPAIR

We have over 20 robotic manipulators and controllers to be able to system test your robotic components. Devices such as teach pendants, servo amplifiers, power supplies, and control boards are closed loop system tested on the exact same type robotic system that you use in your manufacturing process. This allows us to not only verify that the original problem with the unit has been corrected, but also verify all other working parameters.

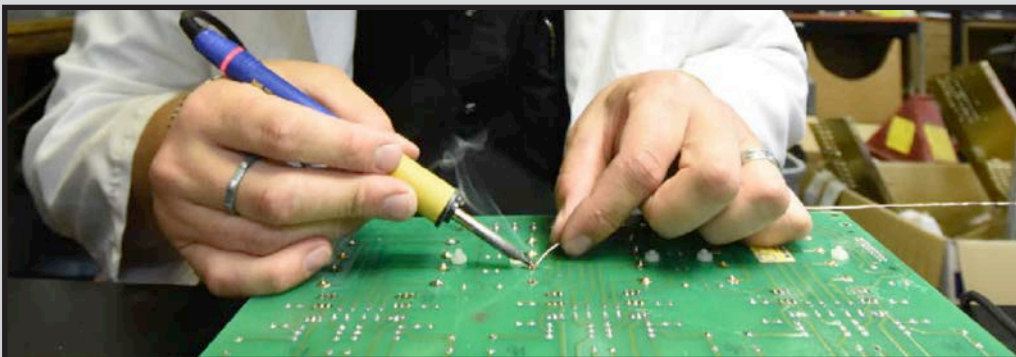


A Sample of the Robots We Service

| | | | | | |
|---------|----------------|--------------|--------------------|-------------|-------------|
| ABB S2 | Comau C3G | Fanuc RJ | Kawasaki FS Series | Kuka KR 150 | Motoman ERC |
| ABB S3 | Comau C5G | Fanuc RJ2 | Kawasaki FD Series | Kuka KR 6 | Motoman MRC |
| ABB S4 | Comau Smart 3 | Fanuc RJ 3 | Kawasaki M Series | Kuka KR 15 | Motoman XRC |
| ABB S4C | Comau Smart S2 | Fanuc RJ 3iB | Kawasaki UT 150 | Kuka KR 30 | Motoman NX |

Our Robotic Fleet is Dedicated to Test the Following:

- CPU/Power Supplies and I/O Cards
- Servo Drives/Multi Axis Amplifiers
- Servo Motors
- Teach Pendants
- Wrist Assemblies



HYDRAULIC REPAIR

We routinely service components from 100s of manufacturers. If you don't see your brand, call 1-888-628-2800.

| | | | |
|------------------------|-------------------|------------------|------------------|
| Abex | Elwood Hydraulics | Miller | Staffa |
| Anker Holth | Excello-Rotac | Milwaukee | Star |
| Asea | Fenner | Moog | Sumitomo |
| Atchley | Fife | Mosier | Summa |
| Atlas | Flo-Tork | MTS | Sundstrand |
| Atos | Fujitsu | Nachi | Team |
| Bignozzi | GPE | Nash | TJ Vickers |
| Bosch | Gresen | Nireco Dynaguide | Tokimec |
| Brueninghaus | Gusher | North American | Tokyo Precision |
| Bruning | Hagglund | Oilgear | Towler |
| Bucher | Hanna | Olson | Trunninger |
| Calzoni | Hartmann | Origa | Tyrone |
| Carter | Haskel | Ortman | Ultra Hydraulics |
| Cessna | Helipebs | Parker Hannifin | Unimate |
| Char-Lynn | Honeywell | Pegasus | Vickers |
| Cincinnati | HPM | Pleiger | Viking |
| Commercial Shearing | Hunkar | Poclain | Vogel |
| Continental Hydraulics | Hunt | Racine | Voith |
| Daikin | Hydro-Line | Rexroth | Volvo |
| Danfoss | Hydromatik | Rineer | Wagner |
| Delaval IMO | Hydrostar | Riva Calzoni | Wandfluh |
| Denison | Hydura | Robohand | Waterman |
| Dezurik | IMO | Rotac | Wepuko |
| Donzelli | Instron | RVA | West |
| Double A | Kawasaki | Sauer | Western Gear |
| Dowty | Kline | Schrader Bellows | White Hydraulics |
| Dynamic | KYB | Servo Kinetics | Willy Vogel |
| Dynapower | Lin-Act | SEW Eurodrive | Worthington |
| Dynex Rivett | Lincoln | Sheffer | Yuken |
| Dyval | Linde | SMC | |
| Eaton | Micro-Precision | SP Manufacturing | |

ELECTRONIC REPAIR

We can evaluate, test and repair nearly every brand of industrial electronic component. If you don't see your brand, call 1-888-628-2800.

| | | | |
|---------------------|---------------------|--------------------|------------------------|
| ABB | Eagle Signal | Kraus Maffei | Rochester Instruments |
| AC Technology | Eaton | Kollmorgen | Sabina |
| Ajax Tocco | Electro Craft | Lambda | Saftronics |
| Allen Bradley | Emerson | Lantech | Sanyo Denki |
| Ambi-Tech | Eurotherm | Lenze | Seco |
| Amtek | Exlar | Louis Allis | SEW Eurodrive |
| Anaheim Automation | Fanuc | Love Controls | Siemens |
| Asea Brown Boveri | Fenner | Magnetek | Sola |
| Bailey Controls | Fife | Magpower | Spang |
| Baldor | Fincor | Marquip | Spectrum |
| Barber Colman | Fischer | Minarik | Square D |
| Baumuller | Flocon | Mitsubishi | SSD |
| Bobst | Forney | Modicon | Stromag |
| Bodine Electric | Fuji Electric | Moog | Sumitomo |
| Bosch | General Electric | Moore Products | Superior Electric |
| Boston Gear | Gettys | Motion Control | TB Woods |
| B&R Automation | Giddings & Lewis | MTS | Telemecanique |
| Burton | Glentek | Multivac | Texas Instruments |
| Butler | GMN | New Jersey Machine | Toshiba |
| Century | Gould | Oilgear | Total Control Products |
| Cincinnati | Graham | Okamoto | Unico |
| Cleveland Machine | Hampton Products | Okuma | Unilux |
| Compumotor | Hayssen | Omron | Uniop |
| Control | Hewlett Packard | Ormec | Viatran |
| Conair | Hitachi | Pacific Scientific | Vickers |
| Contraves | Honeywell | Parametrics | Ward |
| Control Concepts | HSD | Parker Hannifin | Warner Electric |
| Control Techniques | Husky | P&H Harnischfeger | Wer Industrial |
| Custom Servo Motors | Icore | Pillar | West |
| Cutler Hammer | Indramat | Powertec | Westamp |
| Danfoss | Inductotherm | Ramsey | Westinghouse |
| Durant | Industrial Drives | Reflex | Whedco |
| Dynamic | Inland Motor Drives | Reliance | Woods |
| Dynamics Research | KB Electronics | Rexroth | Xycom |
| Dynapar | KEB | Robicon | Yaskawa |
| Dynapower | Klockner Moeller | Robosoft | |

3M Abbott Labs Accuride ADM AEP Aisin Automotive Akebono AK Steel Alcan Alcoa Allegheny Ludlum
 Amcor Ameren Amsted Rail Anchor Glass AO Smith Arcelor Mittal Armour Eckrich Arvin Meritor ATK Ball
 Metal BASF Baxter Labs Bay Valley Foods Bekaert Bemis Berry Plastics BF Goodrich Bimbo Bakeries Boeing
 Borg Warner Bosch Automotive Bridgestone Firestone Briggs & Stratton BWAY Canton Drop Forge Cargill
 Caterpillar Cerro Copper CNH America Coca-Cola Consolidated Container Constar Cooper Automotive Crown
 Cork & Seal Cryovac Cummins Engine Dana Dart Container Dean Foods Del Monte Domtar Dow Chemical
 Duke Energy DuPont Dynege Eaton Electro-Motive Electrolux Emerson Electric Exxon Mobil Faurecia Federa
 Mogul Flex-N-Gate Freightliner Freudenberg NOK Frito-Lay Gardner Denver Gates Rubber General Dynamics
 General Electric General Mills General Motors Gerdau Ameristeel GKN Graham Packaging Graphic Packaging
 Grede Foundries Guardian Automotive Hamilton Sundstrand Harley Davidson Heinz Hershey Hillshire Farms
 Honda Honeywell Hormel Howco Hydro Aluminum IAC Ingersoll Rand Instron International Paper ITT ITW
 JBS Foods Jeld Wen John Deere Johns Manville Johnson Controls Kaiser Aluminum Kapstone Paper Kennametal
 Kraft Foods Leggett & Platt Lockheed Martin Luvata Magna Automotive Martinrea Martin Sprocket Masonite
 Masterbrand Cabinets MeadWestvaco Metso MillerCoors Mitsubishi Morton Salt Mueller Brass NASA Nestle
 NewPage Norandal Northrop Grumman NOV Novelis NTN Nucor Nypro Owens Brockway Pactiv Parker
 Hannifin PCA PCC PepsiCo Pinnacle Foods Plastikpak PPG Printpack Proctor & Gamble Quad Graphics
 Quaker Oats Remington Arms Republic Engineered Steels Rexam Rexnord Rock-Tenn Rolls Royce RR Donnelley
 Rubbermaid Saint Gobain SAPA SCA Tissue Siemens Silgan SKF Smuckers Sonoco Southeastern Container
 Special Metals SPX Steel Dynamics Tecumseh Products Tenaris Tenneco ThyssenKrupp Timken Titan Wheel
 Tootsie Roll Toshiba Trane Trelleborg Automotive Trinity Industries Triumph Aerospace TRW TVA Tyson Foods
 UPS US Army US Steel Verso Paper Ventra Automotive Veyance Technologies Voith Paper Vought Aircraft
 Volvo Truck Wausau Paper Whirlpool Worthington Steel Wrigley's Gum Wyman Gordon YSK ZF Lemforder



© 2020 THE HOPE GROUP
v06-18

Headquarters
 70 Bearfoot Road
 Northborough, MA 01532
 Tel: 508-393-7660
 Fax: 508-393-8203

Bangor Parker Store
 257 Perry Road
 Bangor, ME 04401
 Tel: 207-942-7475
 Fax: 207-941-9875

Lewiston Parker Store
 14 Enterprise Street
 Lewiston, ME 04240
 Tel: 207-783-9108
 Fax: 207-782-8634

S. Portland Parker Store
 5 Wallace Avenue
 South Portland, ME 04106
 Tel: 207-774-6266
 Fax: 207-774-4735

Manchester Parker Store
 880 Candia Road
 Manchester, NH 03109
 Tel: 603-622-4998
 Fax: 603-622-4667

Fitchburg Parker Store
 58 Crawford Street
 Fitchburg, MA 01420
 Tel: 978-342-6817
 Fax: 978-345-7604

Woburn Parker Store
 134B New Boston Street
 Woburn, MA 01801
 Tel: 781-404-5858
 Fax: 508-351-2777

Weymouth Parker Store
 50 Finnell Drive, Unit 12-14
 Weymouth, MA 02188
 Tel: 781-803-2572
 Fax: 781-812-2641

Cranston Parker Store
 215 Niantic Avenue
 Cranston, RI 02907
 Tel: 401-943-1577
 Fax: 401-943-8808

N. Haven Parker Store
 350 Sackett Point Road
 North Haven, CT 06473
 Tel: 203-269-1299
 Fax: 203-891-7649