

Horizon DataSys

Reboot Restore Rx Pro

v10.7

User Manual



© Horizon DataSys. Copyright 2015. All Rights Reserved
Last Updated on May 15, 2017

Table of Contents

Chapter 1: Installation and Setup	4
Minimum System Requirement for Installing Reboot Restore Rx Pro.....	4
Creating an Exclusion Drive	7
Deployment	7
Product Activation	8
Chapter 2: Defining the baseline and restore options	10
Baseline Information	10
Restore-to-Baseline Settings	11
Disable Restore	11
Restore from Subsystem	12
Reset to the Last Good Known Baseline	12
Update Baseline	13
Chapter 3: Program Settings	14
Change Administrator Password	14
Hide Program Icon	15
Exclude Registry Keys from Restore-to-Baseline	16
Restrict Access to USB Port(s), Optical Drive(s), and/or the Internet	17
Connect to the RMC.....	18
Chapter 4: Command Line Switches	19
Chapter 5: Uninstalling Reboot Restore Rx Pro	21
Chapter 6: Product Limitations	22
Terms and Conditions	22
Product Limitations	23
Chapter 7: Chapters Resources	24

Introduction

Thank you for choosing Reboot Restore Rx Pro Edition. This User Guide is provided to give a quick overview of the basic features along with a brief description of each feature. If you're still unable to find the information you're looking for, you can find additional resources and contact methods at the end of this document.

Reboot Restore Rx Pro is a PC baseline recovery software which automates the process of continually returning multi-user computer workstation(s) back to a preset configuration that you define (called the "baseline"). Regardless of what any user may attempt to do to the systems -- including, but not limited to, erasing files, installing software, infecting the machines with malware, downloading files, changing system settings, or deliberately tampering with registry settings -- Reboot Restore Rx Pro will still reset the PC(s) back to your predefined baseline settings upon every restart, on any fixed schedule, or after a defined period of inactivity, making the workstation(s) perfectly configured and available for the next user.

What makes Reboot Restore Rx Pro the best choice as your PC auto-reset solution?

- Non-restrictive design, freedom for users to use PC workstations without restrictions.
- Easy to deploy to a network of workstations in just minutes.
- Extremely fast; restore an entire full 4 Tb harddrive in just seconds.
- Doesn't require hidden partitions or special files or folders to setup and run.
- Flexible restore options, restore baseline on restart, restore on logoff, restore on the first boot up of that day, restore daily, restore weekly, when the system becomes idle, or only restore when desired.
- Easy to update baseline; you don't need to disable protection to make changes to the baseline. Simply make changes to the system and set this new system state as the new baseline without having to restart Windows.
- An Exclusion Drive can be configured to keep data unchanged from rollback.
- Return to an earlier baseline if you updated the baseline but aren't happy with the baseline update

What Can Reboot Restore Rx Pro Do?

Reboot Restore Rx Pro allows you to quickly and easily:

- Reset public-access PC workstations to a clean, pre-configured baseline after each session.
- Completely clean up virus, spyware, or other malware infections.
- Remove unauthorized software installations.
- Fix issues resulting from inadvertent user errors, virus infections, incidental system degradation, unwanted program updates, or Windows compatibility issues.
- Sandbox new untested applications before installing them on your live system and potentially exposing it to any unwanted changes.
- Prevent identify theft and key board logging utilities from remaining on the PCs.
- Enforce a common operating environment and your organization's EUP (End User Policy).

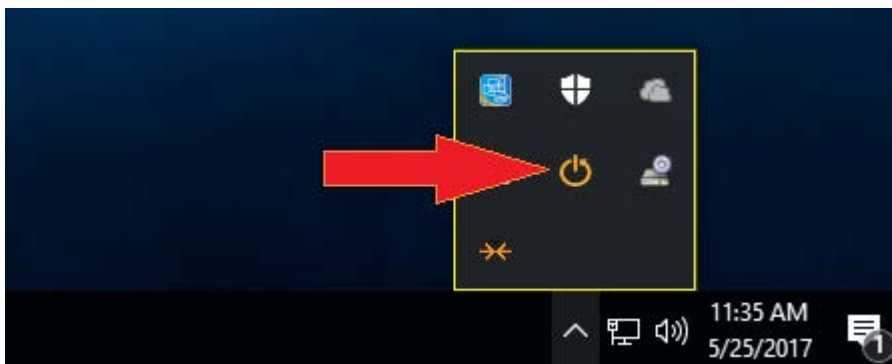
Program Components

Reboot Restore Rx Pro has three main components:

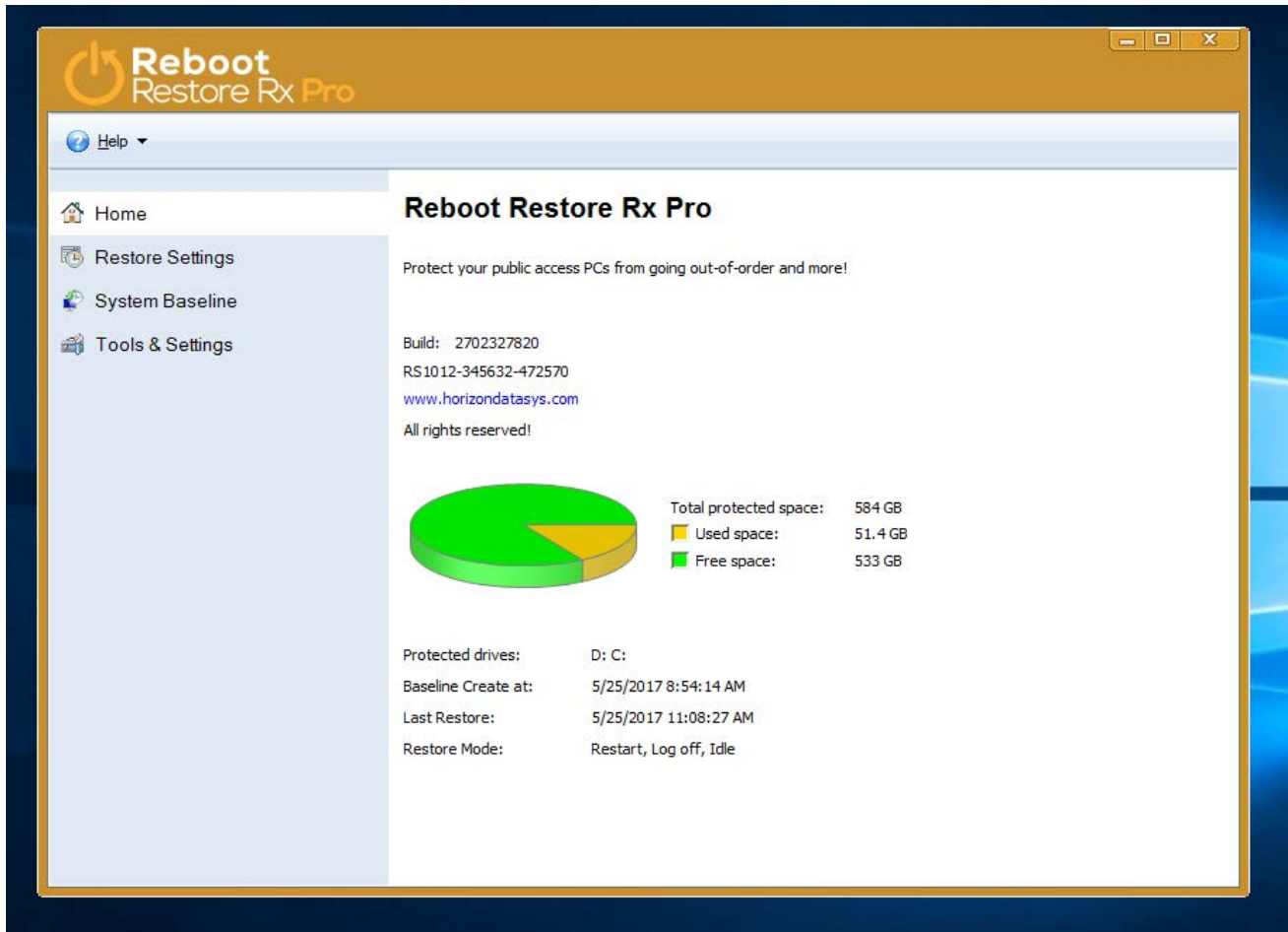
Subsystem Console: This is the basic interface to Drive Vaccine's disk operating system (DOS) which is a mini- operating system working wholly outside Windows. Reboot Restore Rx Pro Subsystem provides you with restoration ability should Windows fail to startup and while Reboot Restore Rx Pro is in the disable restore mode. You can access the Subsystem Console by pressing the HOME key on your keyboard during the system boot-up.



System Tray Icon: This is a shortcut to access Reboot Restore Rx Pro from your desktop. You can find it in the lower right-hand corner of your Windows desktop. The System Tray Icon (or Systray Icon) provides you quick access to the main program console. Right-click on the system Tray Icon to bring up the Reboot Restore Rx Pro Application Console.



Application Console: This is Drive Vaccine's primary user interface in Windows. Here you can find easy and quick access to all the program features.



Chapter 1: Installation and Setup

Minimum System Requirements for Installing Reboot Restore Rx Pro

Verify that the system meets the following minimum requirements before attempting to install Reboot Restore Rx Pro.

- 1.0 gigahertz (GHz) processor.
- Microsoft® Windows® XP, Windows Vista™, Windows 7, Windows 8 & 8.1, or Windows 10
- 1 gigabytes (GB) of RAM.
- 10 gigabyte (GB) of free hard disk space.
- CD/DVD-ROM drive if you need to setup from the installation CD.
- Additionally, you must have an Internet Service provider (ISP) if you wish to activate the program over an Internet connection.

 **Reboot Restore Rx: is designed ONLY for Windows PCs. Do NOT install it on servers Mac, and Linux Operating Systems.**

**Always backup your important data before installing Reboot Restore Rx Pro.
For multi-boot system installation please consult to the [Knowledgebase](#).**

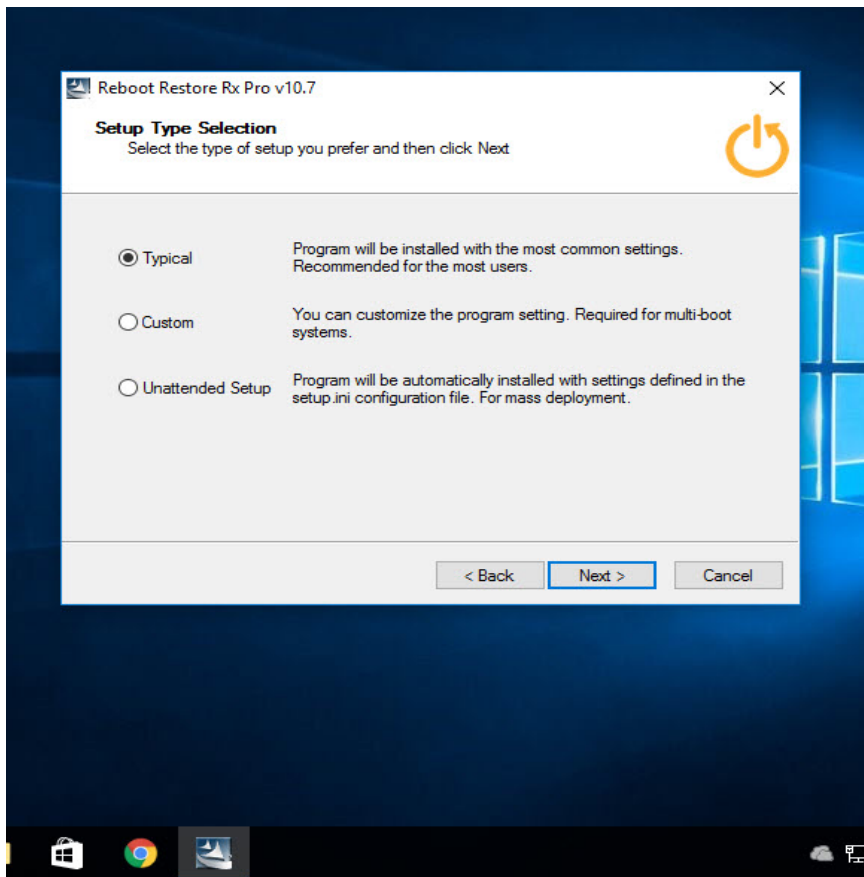
Installing Reboot Restore Rx: Professional

Before installing Reboot Restore Rx Pro close any applications that you may have running.

To install Reboot Restore Rx Pro insert the installation disk or run Setup.exe from the download archive file. A welcome screen will appear at the start of the installation process. Click on “Next” and follow these steps to complete installation.

Read and accept the End User License Agreement. Then click **Next**.

Then you will be presented with a screen offering three different setup options.



Typical Setup

Typical Setup will install Reboot Restore Rx Pro with the default program settings. During the Typical Setup, you will be prompted to enter/configure the following Reboot Restore Rx Pro program settings:

- Disable Windows System Restore to maximize disk space usage
- Your Product ID
- Set an administrator password
- Select the partition(s) to protect

Custom Setup

Custom Setup lets you to configure all the available program setup options. During the custom setup, you will be prompted to enter/configure the following Reboot Restore Rx Pro program settings:

- Disable Windows System Restore to maximize disk space usage
- Your Product ID
- Set administrator password
- Select the partition(s) to protect
- Enable and define the files and folders for an Exclusion Drive
- Location on your hard drive where you'd like to install the program files to
- Setup for Windows multi-boot systems

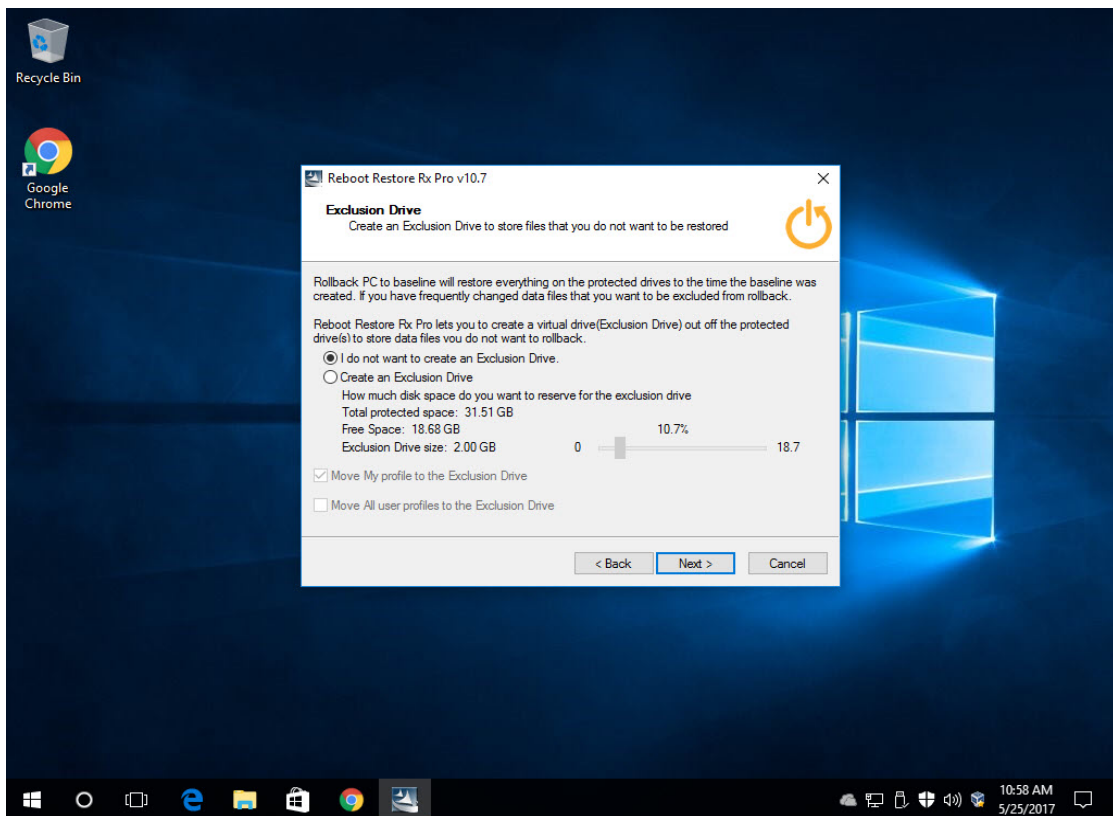
Unattended Setup

Unattended Setup is used to deploy Reboot Restore Rx Pro to a network of computers with pre- configured program settings. Unattended Setup reads in the program settings from a setup configuration file, **setup.ini**. You can create this **setup.ini** configuration file using **Setup INI Wizard** provided in the support folder on the program CD or download archive (zip) file. With the **Setup INI Wizard** you can configure all the Reboot Restore Rx Pro program settings.

To continue Click on **Next** to Start the installation Process.

Creating an Exclusion Drive

Reboot Restore Rx Pro restores everything on your protected hard drive(s) back to the baseline. But you may wish to have put aside certain user data files and folders that would be excluded from the restore process and the changes made to these files and folders to remain persistent even while everything else is restored to the baseline configuration. You must define this Exclusion Drive during the installation process as an **Exclusion Drive** can't be created after installation. If Reboot Restore Rx Pro is already installed you can still exclude some registry keys from the restore-to-baseline. To set up an **Exclusion Drive** chose **Custom Setup** during the installation process.



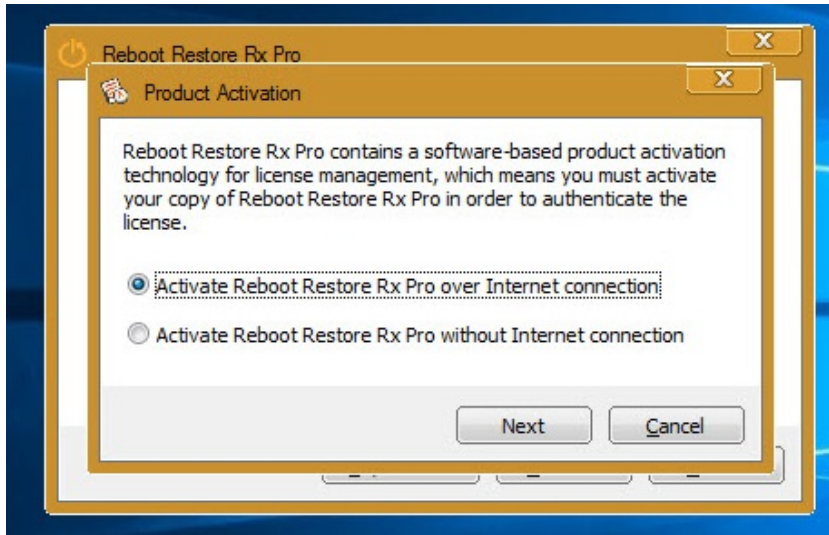
Once the installation has successfully completed you will be prompted to **restart** your computer to complete the installation.

Deployment

To mass deploy Reboot Restore Rx Pro with Windows Active Directory, SMS software deployment tools, Network logon scripts, or using system images, refer to the Reboot Restore Rx Pro Deployment Whitepaper included in the Support folder on the program CD or downloaded archive (zip) file.

Product Activation

Reboot Restore Rx Pro contains software-based product activation technology, which means you must activate your Reboot Restore Rx Pro installation in order to authenticate its license.



Activate Reboot Restore Rx Pro over an Internet Connection

If the computer on which Reboot Restore Rx Pro is installed can connect to the Internet, you can easily activate the license using the **Activate Reboot Restore Rx Pro over Internet Connection** option.

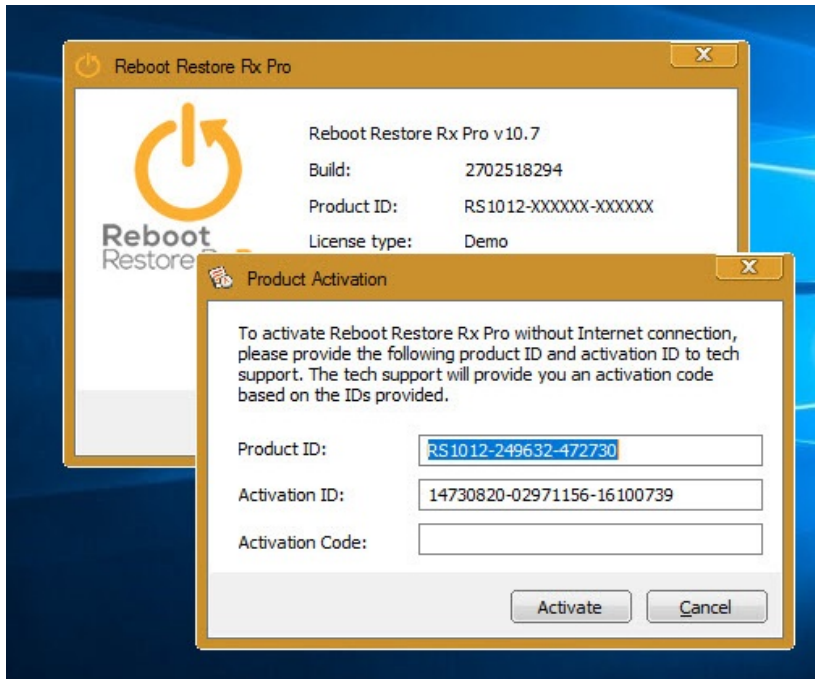
1. Upon the purchase of Reboot Restore Rx Pro you will receive a Licensed Product ID from Horizon DataSys. You can install Reboot Restore Rx Pro with this Licensed Product ID and the activation will be done automatically during setup. If you installed Reboot Restore Rx Pro using the demo key during installation, you can activate using your personal license key after installation without having to uninstall and reinstall the program.
2. To activate Reboot Restore Rx Pro over an Internet connection, right-click on the Reboot Restore Rx Pro system tray icon and select "About" from the popup menu. Click on the Activate button on the About Window. Then select "Activate Reboot Restore Rx Pro over Internet connection" and click on Next.
3. Copy and paste the Licensed Product ID that you received from Horizon DataSys into the Product ID field replacing the demo Product ID, and click on the Activate button.

That's it! You won't need to supply any other information for the activation.

*** The number of installations of Reboot Restore Rx Pro that you can activate is limited by the number of licenses defined by the Licensed Product ID.**

Activate Reboot Restore Rx Pro without an Internet Connection

If the computer on which Reboot Restore Rx Pro is installed doesn't have an Internet connection, you will need to do an offline activation of Reboot Restore Rx Pro using a registration code.



1. To manually activate Reboot Restore Rx Pro right-click Reboot Restore Rx Pro system tray icon and select the About option from the popup menu. Click on the Activate button on the About Window. Select "Activate Reboot Restore Rx Pro without Internet connection." Click on Next.
2. On the Product Activation Window, you will see a Product ID and an Activation ID, write down or copy-and-paste these two IDs and send them to Horizon DataSystem support by fax, phone, or email at the contact information given at the end of this User Guide.
3. Horizon DataSystem support will reply you with an Activation Code based on the Product ID and Activation ID you provided.
4. Type this Activation Code into the Activation code field and hit the Activate button.

That's it! You won't need to supply any other information.

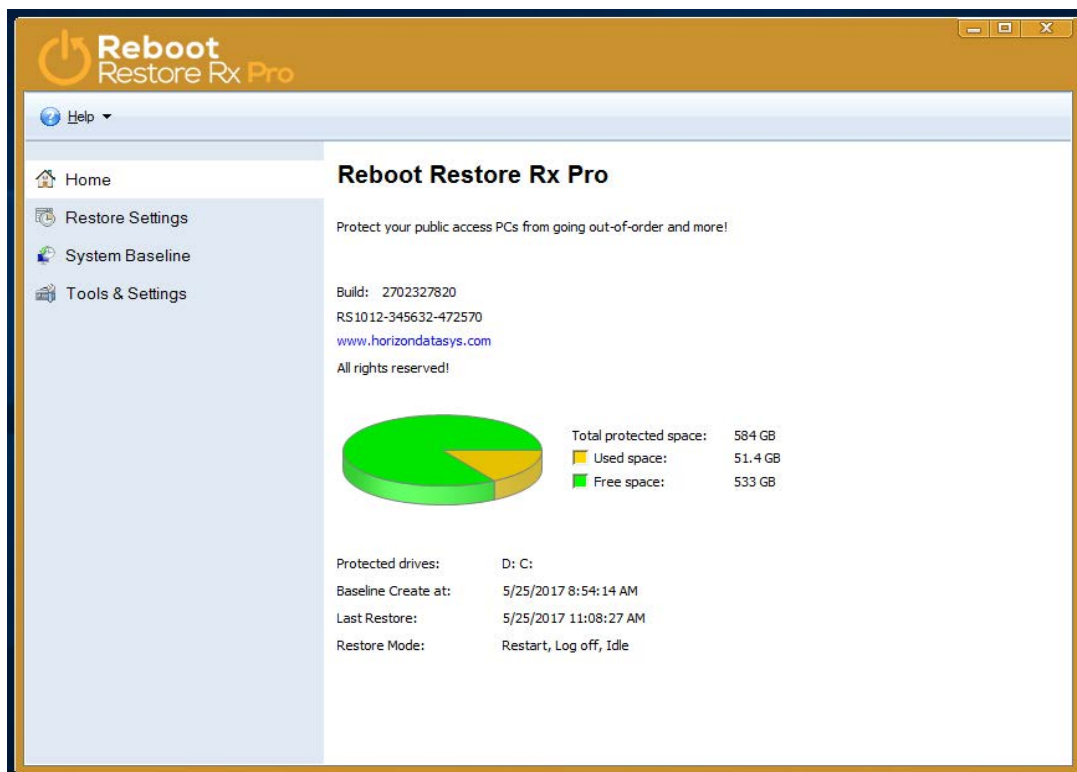
Chapter 2: Defining the Baseline and Restore Options

Baseline Information

The Baseline is the cornerstone of Reboot Restore Rx Pro it's the predefined system state to which Reboot Restore Rx Pro will restore the PC. The baseline can be updated to include the current system settings and data changes since the last baseline was created.

To view the current baseline's information, right-click the Reboot Restore Rx Pro icon in the system tray and select "Open Reboot Restore Rx Pro" from the popup menu.

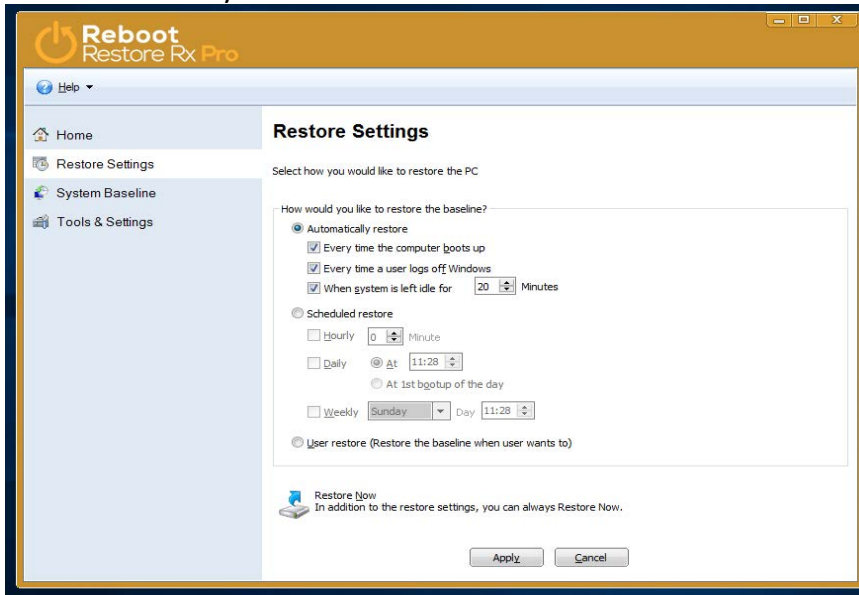
In the Reboot Restore Rx Pro main application console click on the Home option in the left-hand navigation pane. Here you can view the date and time at which the current baseline was created, when the last restore-to-baseline took place, and the restore mode (or restore trigger).



Restore-to-Baseline Settings

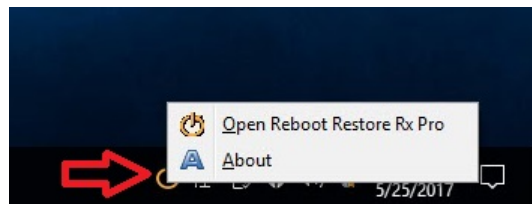
You can configure Reboot Restore Rx Pro to restore the system back to the baseline according to one of the following:

1. Auto-restore baseline at every startup and restart (boot up).
2. Auto-restore baseline at logoff.
3. Auto-restore baseline after a specified period of inactivity.
4. Auto-restore baseline hourly at the specified minutes past the hour.
5. Auto-restore baseline daily at first boot up of the day.
6. Auto-restore baseline daily at the specified time of the day.
7. Auto-restore baseline weekly on the specified day of the week and the time.
8. Manually restore baseline.



* You can also choose to restore the baseline at any time by pressing the Restore Now button.

1. To configure restore baseline settings, right-click the Reboot Restore Rx Pro icon in the system tray and select "Open Reboot Restore Rx Pro" from the popup menu.



2. In the Reboot Restore Rx Pro main application console, choose "**Restore Settings**" from the navigation pane on the left-hand side. Make your selection on the right hand panel.

Disable Restore

You can disable Drive Vaccine's restore to make changes to the system. After you make changes to the system, you need to run **Update Baseline** in order to incorporate these changes into the new baseline. If you don't want to keep the changes, DON'T hit the Update Baseline button but press the Restore Now button instead.

1. To disable Drive Vaccine's restore-to-baseline to make changes to the system, right-click the Reboot Restore Rx Pro systray icon and select "**Open Reboot Restore Rx Pro**" from the popup menu.

In the Main Menu, click on "**Restore Settings**" from the left-hand side navigation pane, select the "Manual" option in the right-hand panel.

Restore from Subsystem

If on the next Windows start-up Reboot Restore Rx Pro won't restore-to-baseline, you can stop the Windows boot-up, go into the Reboot Restore Rx Pro sub-console, and restore back to the current baseline or the prior baseline.

1. To restore-to-baseline from the pre-Windows subsystem, restart the computer and press the HOME key after the BIOS screen to access the Reboot Restore Rx: Professional subsystem console. Select option 1: Restore Baseline
2. You may be prompted to enter a password for the Administrator account to enter the subsystem console. Enter your password. Select **Restore PC** from the subsystem menu.

Reset to the Last Good Known Baseline

If you've made changes to the baseline which now cause Windows to no longer boot-up properly, is there a way to back-out of these new changes and return to an earlier baseline? Yes, Reboot Restore Rx Pro allows you to undo baseline updates by returning the system back to the baseline that was saved prior to the current baseline update.

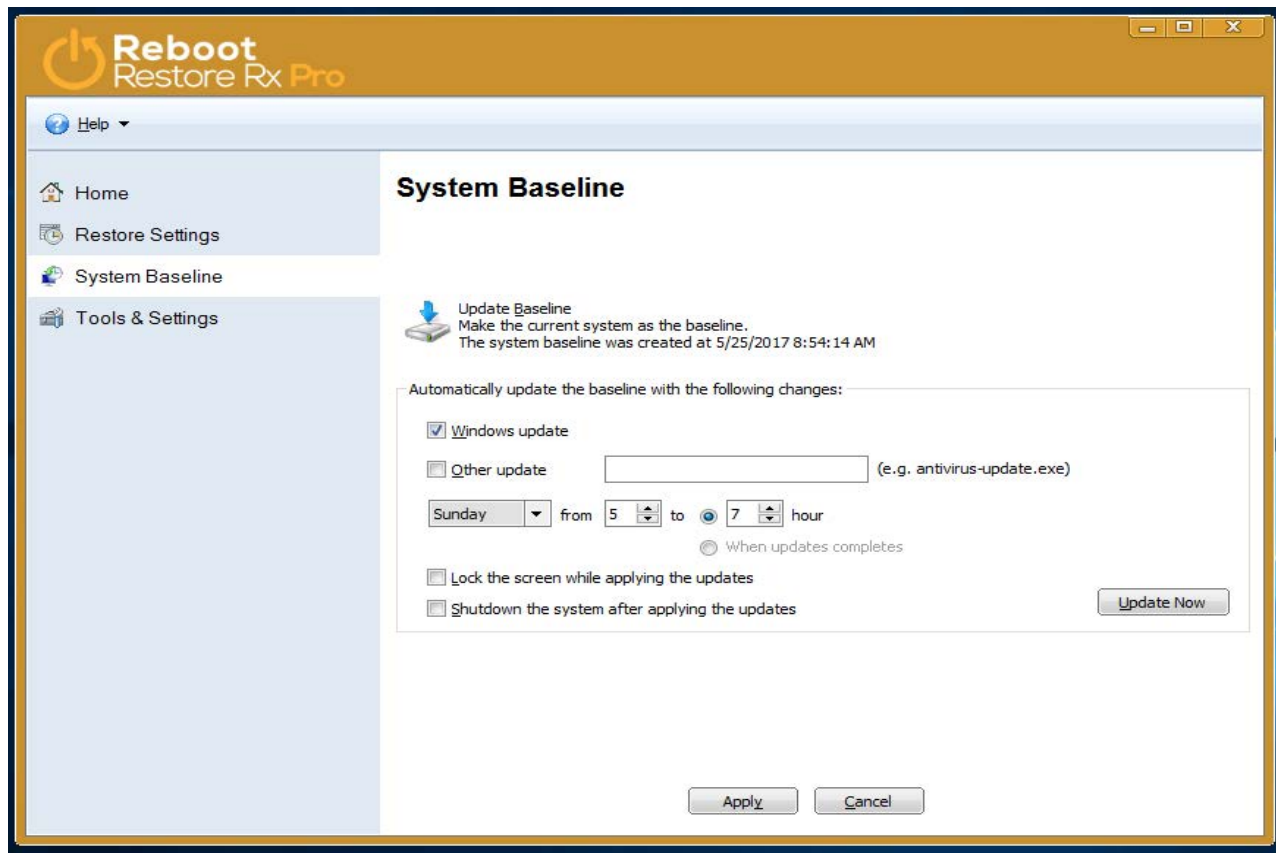
1. To return the system to the Last Good Known Baseline, restart the computer and press the HOME key after the BIOS screen to access the Reboot Restore Rx Pro subsystem console. Select option 2.



Update Baseline

You can either manually update the baseline by pressing the Update Baseline button. Or automate the baseline update by setting up a baseline update task which also allows you to execute the Windows and/or program updates before updating the baseline. If you set up a Baseline Update task the following events will take place:

1. Restore to the current baseline.
2. Apply updates as selected at the scheduled time and update the baseline at end of this time frame.
3. Shutdown the PC after the updates have completed (optional).



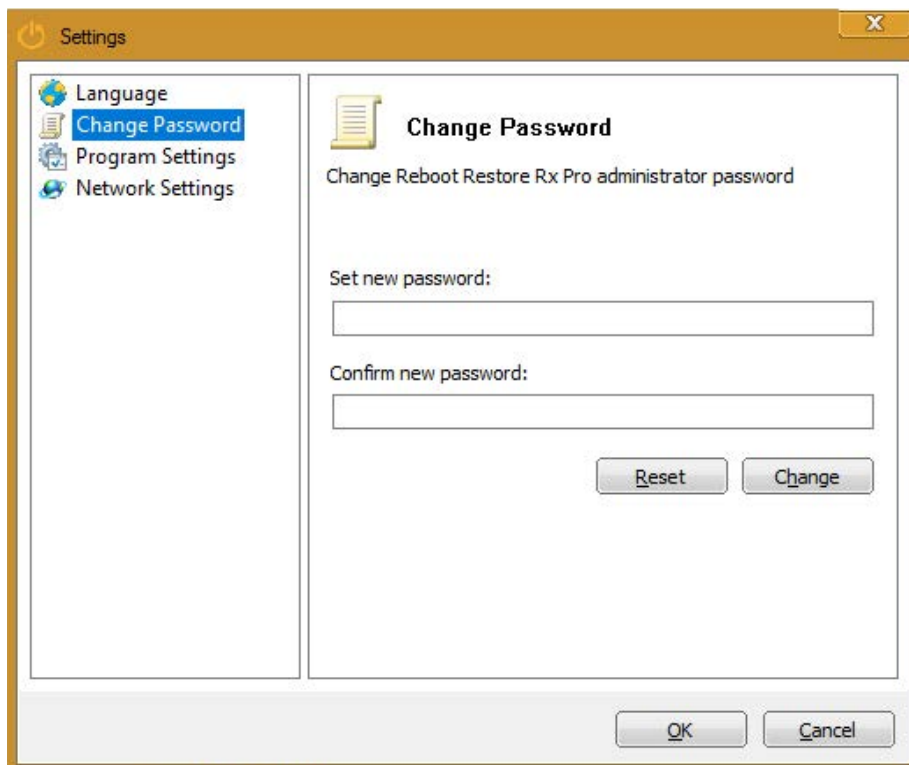
When you set up an automated baseline update task any restore-to-baseline setting will be temporarily suspended for the duration of the updates to be applied and the baseline to be updated. This is a recursive baseline update task so once this task has completed it will repeat the following week and thereafter. For more update options please use the Reboot Restore Rx Pro **Remote Management Console**.

The baseline update start time and end time use a 24 hour military clock and cannot extend beyond a single day. The baseline will be updated at the end time and the restore setting will then resume. If the updates go beyond the scheduled end time, the new baseline will contain an incomplete update. So you're strongly advised to allow extra time for the updates to occur.

Chapter 3: Program Settings

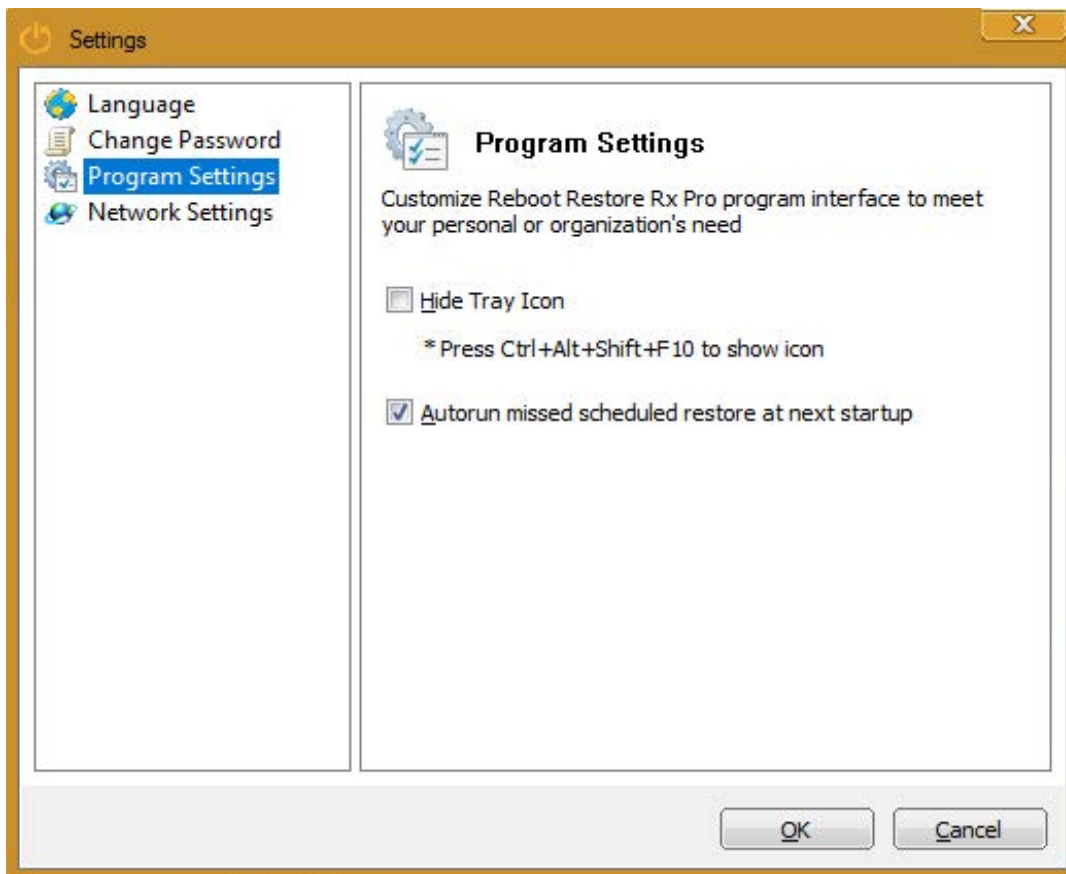
Change Administrator Password

1. Right click the Reboot Restore Rx Pro icon in the system tray, select "Open Reboot Restore Rx Pro" from the popup menu.
2. In the main application console, click on "Tools & Settings." The right-hand panel will display the Tools & Settings options. Select the "Settings" option.
3. In the Settings window, choose the Change Password tab.
4. Set a new password for the administrator account and retype it to confirm this new password. By default the login is: **Administrator**.



Hide Program Icon

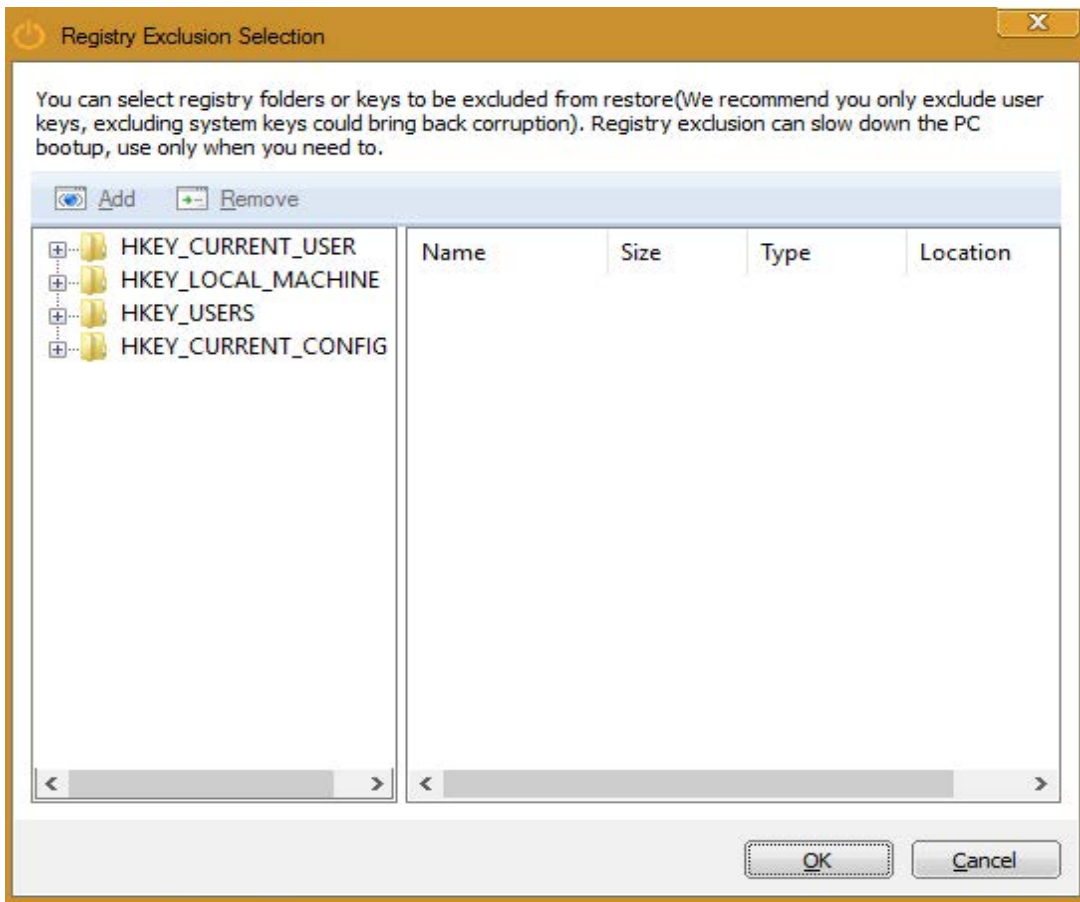
1. Right-click the Reboot Restore Rx Pro icon in the system tray, select "Open Reboot Restore Rx Pro" from the popup menu.



2. In the main application console, click on "Tools & Settings." The right-hand panel will display the Tools & Settings options. Select the "Settings" option.
3. Select the Program Settings option in the left-hand Settings menu Navigation Pane.
4. Check the "Hide Tray Icon" option.
5. To show the program icon in the system tray, simultaneously press the **Ctrl + Alt + Shift + F10** keys.

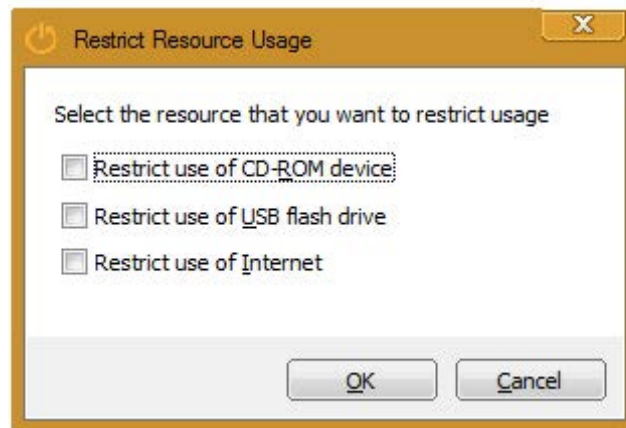
Exclude Registry Keys from Restore-to-Baseline

1. Right-click the Reboot Restore Rx: Professional icon in the system tray, select "Open Reboot Restore Rx: Professional" from the popup menu.
2. In the main application console, click on "Tools & Settings." The right-hand panel will display the Tools & Settings options. Select the "Registry Exclusion" option.
3. A Registry Key Selection window should pop-up. Select the key(s) that you wish to exclude from the auto-restore and click on "Add."



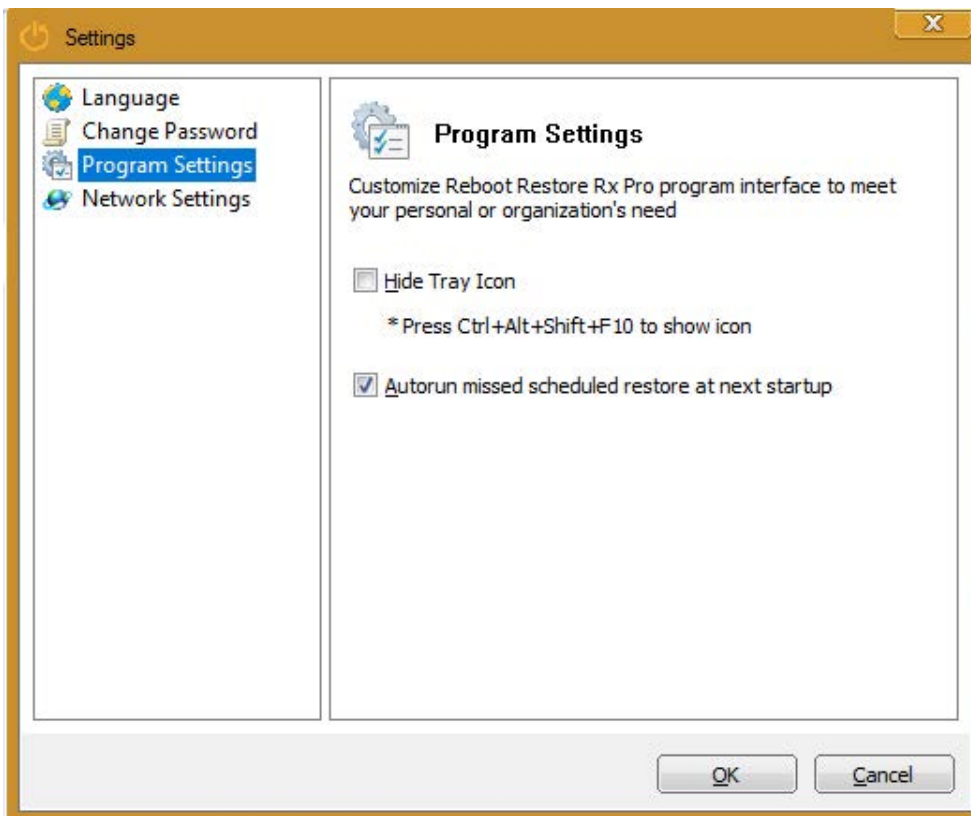
Restrict Access to USB Port(s), Optical Drive(s), and/or the Internet

1. Right-click the Reboot Restore Rx Pro icon in the system tray, select "Open Reboot Restore Rx Pro" from the popup menu.
2. In the main application console, click on "Tools & Settings." The right-hand panel will display the Tools & Settings options. Select the "Restrict Resource Usage" option.
3. Click on any, some, or all of the checkboxes to prevent users from accessing those system resources.



Connect to the Remote Management Console (RMC)

Reboot Restore Rx Pro comes with a free network management utility that enables IT administrators of multiple machines to centrally control all multiple Reboot Restore Rx Pro client PCs (PCs on which Reboot Restore Rx Pro is installed) from a single interface. You can find this utility included on the Reboot Restore Rx Pro download file in the RMC folder. The RMC is installed on a single machine to which all the client PCs will connect to. Determine the Internet Protocol (IP) address of the machine on which the RMC is installed and using the following instructions, enter this IP address into each Reboot Restore Rx Pro client machine. You may need to create exceptions in your network firewall to allow these client machines to connect to the RMC.



To connect a client PC to the Reboot Restore Rx Pro Remote Management Console (RMC):

1. Right-click the Reboot Restore Rx Pro icon in the system tray, select "Open Reboot Restore Rx Pro" from the popup menu.
2. In the main application console, click on "Tools & Settings." The right-hand panel will display the Tools & Settings options. Select the "Settings" option. In the Settings window, choose the Network Settings tab.
3. Check "Connect to network management console" option. You will need to provide:
 - Computer name or IP address of the computer that has the Reboot Restore Rx Pro RMC installed.
 - The port number used by Reboot Restore Rx Pro RMC to client connections.

Chapter 4: Command Line Switches

Reboot Restore Rx Pro provides you a set of command-line switches to manage the software with batch files or network scripts. Enter the specified switch using at a Windows DOS prompt.

Help

ShdCmd.exe {/Help | ?}

Setup and Uninstall

Unattended Setup

Setup.exe /s

Uninstall

ShdCmd.exe /Uninstall {/baseline | /current } /u administrator /p password

Program Settings

Tray Icon

ShdCmd.exe /TrayIcon [/show | /hide] /u administrator /p password

Language

ShdCmd.exe /Lang [/set langid] /u administrator /p password

*Langid can be retrieved by running ShdCmd.exe /Lang

Subsystem Display Mode

ShdCmd.exe /StartMode [text | color16 | color256 | colortrue] /u administrator /p password

Show Protected Partitions

ShdCmd.exe /Part /u administrator /p password

Change Administrator Password

ShdCmd.exe /ChangePwd /pwd [password] /u administrator /p password

Import Program Settings from Setup.ini

ShdCmd.exe /Import {/path infilepath} /u administrator /p password

Update Baseline

ShdCmd.exe /Snapshot /u administrator /p password

Update Baseline Scheduler

ShdCmd.exe /UpdateSch [/show] [/win] [/app name] [/t day-from-to] [/shutdown] /u administrator /p password

*[/show] shows the current setting

Restore Now

ShdCmd.exe /Restore [/baseline | /lastgood | /current] /u administrator /p password

Reset or Update the Installation Baseline

ShdCmd.exe /Baseline {/reset | /update} /u administrator /p password

/reset: reset to the installation baseline

/update: update the current system as the new installation baseline

Add shutdown switch to the restore command line

ShdCmd.exe /Restore [/baseline] | /lastgood | /current] /shutdown /u administrator /p password

/baseline: reset to baseline

/lastgood: reset to last good known

/current: reset to current baseline

Exclude Registry from Restore

ShdCmd.exe /SyncReg [/add keyname1 ...] [/del keyname1 ...] [/clear] [/export filename] [/backup] /u administrator /p password

add: Add registry keys to be excluded from restore

del: Deleted registry keys added to the exclusion

clear: Delete ALL registry keys added to the exclusion

export: Export the registry keys added to the exclusion to a file (for debug only)

Restrict Use of Resources

ShdCmd.exe /Restrict [/cdrom [0|1]] [/ufd [0|1]] [/internet [0|1]] /u administrator /p password

Restore Settings

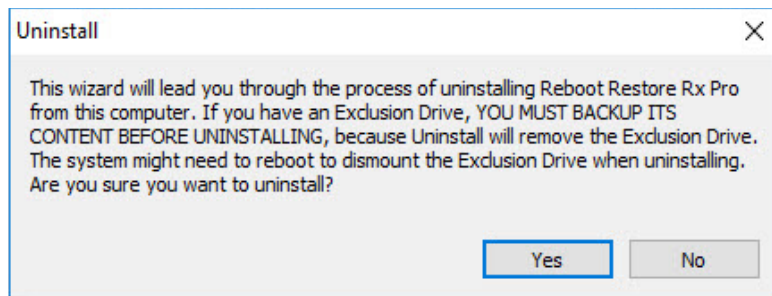
ShdCmd.exe /ResMode [/show] [/restart] [/logoff] [/idle mm] [/weekly "dd hh:mm"] [/daily hh:mm|1stboot] [/hourly mm] /u administrator /p password

*[/show] shows the current setting

Chapter 5: Uninstalling

You can uninstall Reboot Restore Rx Pro from your computer through the following method:

- **Uninstall Reboot Restore Rx Pro from your computer's Control Panel** Control Panel > Programs and Features > Reboot Restore Rx: Professional Uninstall needs to restart the computer. Select "Yes" to restart.



If you have an Exclusion Drive configured for Reboot Restore Rx Pro you'll be prompted to uninstall (remove) the Exclusion Drive after rebooting.

* Before removing the Exclusion Drive, you must save (copy or move) the data in the Exclusion Drive to an external drive, removing the Exclusion Drive will cause you to lose all the data on the Exclusion Drive! If you wish to save the data onto the internal drive on which Reboot Restore Rx: Professional is installed then you must move or copy the data from the Exclusion Drive to this internal drive and update the baseline. When you uninstall Reboot Restore Rx: Professional the system will be left in this new baseline with your Exclusion Drive data included.

* If you are experiencing any problems with your computer DO NOT attempt to uninstall Reboot Restore Rx: Professional. You should first use the "Restore Now" or the "Restore to Last Good Known" to restore and attempt to repair the system instead.

Chapter 6: Product Limitations

Terms and Conditions

The information contained in this User Guide is subject to change without notice. Horizon DataSys assumes neither responsibility nor obligation of any kind for any errors contained herein nor does Horizon DataSys assume any liability in connection with the furnishing, performance, and use of this document.

Trademarks or Service Marks

Reboot Restore Rx Pro is a registered trademark of Horizon DataSys Corporation in the U.S.A.

Other

brands and products are trademarks of their respective holders.

Copyright

This document is a copyright © 2017 by Horizon DataSys Corporation. All rights reserved. No part of this document may be reproduced in any form, including creating facsimiles, altering, translating into another language, transmitting, or distributing without the expressed prior written authorization of Horizon DataSys Corporation.

License and Warranty

Reboot Restore Rx Pro, and other trademarked names and references are the exclusive property of Horizon DataSys, Inc. and are protected by international copyright laws. You have certain rights and permissions for the legal use this document and the Reboot Restore Rx Pro software after your acceptance of these Terms and Conditions outlined in the Reboot Restore Rx Pro End User License Agreement.

You May

- Install only one copy of the software under one license.
- Make only one copy of the software for archival purposes.
- Transfer the software on a permanent basis to another entity, provided that you retain no copies of the software.

You May Not

- Rent or lease any portion of the Reboot Restore Rx Pro software.
- Reverse engineer, decompile, disassemble, modify, translate, make any attempts to cover the source code of the software or create derivative works from the software.
- Attempt to install and activate this software on any more individual nodes than the number of license keys that you are granted by your legally purchased keys.
- Use a previous license key or key set of the software after you've received a replacement key or key set for an upgraded version of the software.

Limited Warranty

If you opted to purchase the Media CD Pack: Horizon DataSys Corporation guarantee that the Media CD Pack on which the software is distributed will be free from defects for a period of thirty (30) days from the delivery date of the software. Subsequent to this guarantee period, Horizon DataSys does not extend any further assurance that the CD-ROM contents will be free of incidental degradations or that the software contained therein will be error-free. Disclaimer of Damages.

In no event does Horizon DataSys assume any liability or indemnity for any special, consequential, indirect, or similar damages, including but not limited to, any lost profits or lost data arising out of the use or inability to use the software even if Horizon DataSys has been advised of the possibility of such aforementioned damages prior to their occurrence. In no circumstance does Horizon DataSys' liability, accountability, or responsibility exceed the purchase price for the software.

Product Limitations

The following limitations still exist in Reboot Restore Rx Pro v10.7:

Hard Disk Support – Reboot Restore Rx Pro can only protect up to four IDE/SATA/PATA hard drives. If a system has more than four hard disks, Reboot Restore Rx Pro will protect the first four drives designated as the Disk0, Disk1, Disk2, and Disk3 hard drives. Reboot Restore Rx Pro does not support SCSI, RAID, or mirroring hard drive configurations.

Booting From an External Media (OS) – Reboot Restore Rx Pro cannot protect the hard drive when changes are made to the hard drive from an external or foreign (non-Windows) operating system bypassing the Reboot Restore Rx Pro protection drivers. For example, booting from a CD-ROM or USB that starts a different OS that may be able to change the hard drive and produce unpredictable results.

Disk Encryption Programs that Intercept Low-Level Disk I/O – Reboot Restore Rx Pro may conflict with some applications that proxy low-level disk I/O such as certain anti-virus programs, encryption software, and imaging software.

Disk Repartitioning – The harddisk on which Reboot Restore Rx Pro is installed cannot be re-partitioned without uninstalling Reboot Restore Rx Pro first.

Changing the Version of the OS Updates – You can't upgrade to a new version of Windows (i.e. from Windows 7 to Windows 8) while Reboot Restore Rx Pro is installed. You must uninstall Reboot Restore Rx Pro first. Some in-version OS upgrades, such as Windows 8.1 also require that Reboot Restore Rx Pro be uninstalled prior to the upgrade. If you're uncertain please contact us first.

Dual-Boot of Windows and Linux OS on the Same Hard Drive – Reboot Restore Rx Pro does not support systems that have multiple Windows Operating Systems with non-Windows Operating Systems (such as Linux or Mac OS) loaded on the same hard drive.

[Click here for installation instructions for dual-boot Windows systems](#)

Chapter 7: Support Resources

Horizon DataSys is committed to providing exceptional customer support and exemplary technical service to all our customers. Our goal is to provide you with professional and timely assistance in the use of our software through a variety of methods including user documentation, online troubleshooting, telephone service, and personal account management. If you are experiencing an issue please first read our Frequently Asked Questions (FAQ) section of our website or other product-specific documentations. Links for other useful resources are also provided here:

[Click here to access the FAQ](#)

[Click here to access the Reboot Restore Rx: Professional Community Forum](#)

If you're still not able to find answers to your questions in the Reboot Restore Rx: Professional

FAQ and the Community Forum, you can go to Horizon DataSys web site support page for more product related documents, white papers, and other information.

You can also submit an online support ticket to the Horizon DataSys technical support team through our online support forum:

[Click here to file a support ticket](#)

If you need specific information related to our product that cannot be found online. Please contact us using any of the following methods:

E-mail: support@horizondatasys.com

Live Chat: Available during business hours (click Chat icon at the bottom of our website)

Telephone Numbers:

Canada:

1100 - 1200 West 73rd Ave Vancouver, BC
V6P 6G5 Canada
Toll: (800) 496-0148 ext. 1 Intl: (604)
324-0797
Fax: (604) 608-3390

USA:

1685 H Street #846
Blaine, WA 98230 USA Toll:
(800) 496-0148 ext. 3
Fax: (360) 233-0466

International:

Melbourne, Australia: (61) 3-865-21961
Buenos Aires, Argentina: (54)11-51993556
Brasilia, Brazil: (55)61-37172269
Bogota, Colombia: (57)1-3819331
Hong Kong, China: (852)300-85705

Jerusalem, Israel: (972) 2-3721-075
Mexico City, Mexico: (1) 800-681-6746
Lima, Peru: (511) 720-4141
Madrid, España: (34) 91-1898-193
United Kingdom: (44)2035149804