

*International Classification of Diseases
9th Revision, Clinical Modification*

2009

**Hospital and Payer
Professional**

ICD-9-CM

Volumes 1, 2 & 3

Codes valid for use October 1, 2008 – September 30, 2009

Table of Contents

Introduction

Preface	ii
Introduction to ICD-9-CM	iii
How to Use the ICD-9-CM	iv
ICD-9-CM Official Conventions	vi
Additional Conventions	vii
2009 ICD-9-CM Code Changes	viii
2009 ICD-9-CM Diagnosis Code Crosswalk	xii
2009 ICD-9-CM Procedure Code Crosswalk	xiii
Official Coding Guidelines	1

Volume 2

Alphabetic Index to Diseases

Alphabetic Index to Diseases	2-3
Table of Hypertension	2-167
Table of Neoplasms	2-218
Table of Drugs and Chemicals	2-333
Alphabetic Index to External Causes of Injury and Poisoning	2-377

Volume 1

Tabular List for Diseases

1. Infectious and Parasitic Diseases (001-139)	1-3
2. Neoplasms (140-239)	1-30
3. Endocrine, Nutritional and Metabolic Diseases, and Immunity Disorders (240-279)	1-54
4. Diseases of the Blood and Blood-Forming Organs (280-289)	1-66
5. Mental Disorders (290-319)	1-73
6. Diseases of the Nervous System and Sense Organs (320-389)	1-86
7. Diseases of the Circulatory System (390-459)	1-122
8. Diseases of the Respiratory System (460-519)	1-144
9. Diseases of the Digestive System (520-579)	1-156
10. Diseases of the Genitourinary System (580-629)	1-178
11. Complications of Pregnancy, Childbirth, and the Puerperium (630-677)	1-195
12. Diseases of the Skin and Subcutaneous Tissue (680-709)	1-211
13. Diseases of the Musculoskeletal System and Connective Tissue (710-739)	1-221
14. Congenital Anomalies (740-759)	1-238
15. Certain Conditions Originating in the Perinatal Period (760-779)	1-251
16. Symptoms, Signs, and Ill-Defined Conditions (780-799)	1-260
17. Injury and Poisoning (800-999)	1-271

Tabular List for Supplementary Classifications

18. Classification of Factors Influencing Health Status and Contact With Health Services (V Codes)	1-323
19. Classification of External Causes of Injury and Poisoning (E Codes)	1-343

Official ICD-9-CM Government Appendices

A. Morphology of Neoplasms	Appendices-2
B. Glossary of Mental Disorders	Appendices-6
C. Classification of Drugs by American Hospital Formulary Services List Number and Their ICD-9-CM Equivalents	Appendices-7
D. Classification of Industrial Accidents According to Agency	Appendices-9
E. List of Three-Digit Categories	Appendices-10

Volume 3

Alphabetic Index to Procedures

Alphabetic Index to Procedures	3-3
--------------------------------	-----

Tabular List for Procedures

0. Procedures and Interventions, NEC (00)	3-83
1. Operations on the Nervous System (01-05)	3-87
2. Operations on the Endocrine System (06-07)	3-91
3. Operations on the Eye (08-16)	3-93
4. Operations on the Ear (18-20)	3-99
5. Operations on the Nose, Mouth, and Pharynx (21-29)	3-101
6. Operations on the Respiratory System (30-34)	3-105
7. Operations on the Cardiovascular System (35-39)	3-109
8. Operations on the Hemic and Lymphatic System (40-41)	3-121
9. Operations on the Digestive System (42-54)	3-123
10. Operations on the Urinary System (55-59)	3-136
11. Operations on the Male Genital Organs (60-64)	3-141
12. Operations on the Female Genital Organs (65-71)	3-144
13. Obstetrical Procedures (72-75)	3-149
14. Operations on the Musculoskeletal System (76-84)	3-151
15. Operations on the Integumentary System (85-86)	3-163
16. Miscellaneous Diagnostic and Therapeutic Procedures (87-99)	3-167

Arthritis, arthritic – continued

- spine – *continued*
 - nonpyogenic 721.90
 - with myelopathy 721.91
 - pyogenic 720.9
 - rheumatoid 720.0
 - traumatic (old) 721.7
 - tuberculous (see also Tuberculosis) 015.0 ⑤ [720.81]
 - staphylococcal 711.0 ⑤
 - streptococcal 711.0 ⑤
 - suppurative 711.0 ⑤
 - syphilitic 094.0 [713.5]
 - congenital 090.49 [713.5]
 - syphilitica deformans (Charcôt) 094.0 [713.5]
 - temporomandibular joint 524.69
 - thoracic (see also Spondylosis, thoracic) 721.2
 - toxic of menopause 716.3 ⑤
 - transient 716.4 ⑤
 - traumatic (chronic) (old) (post) 716.1 ⑤
 - current injury – see nature of injury
 - tuberculous (see also Tuberculosis, arthritis) 015.9 ⑤ [711.4] ⑤
 - urethritica 099.3 [711.1] ⑤
 - urica, uratic 274.0
 - venereal 099.3 [711.1] ⑤
 - vertebral (see also Arthritis, spine) 721.90
 - villous 716.8 ⑤
 - von Bechterew's 720.0

Arthrocele (see also Effusion, joint) 719.0 ⑤**Arthrodendritis** – see Arthritis**Arthrodysplasia** 755.9**Arthrodynia** (see also Pain, joint) 719.4 ⑤**Arthrodysplasia** 755.9**Arthrofibrosis**, joint (see also Ankylosis) 718.5 ⑤**Arthrogryposis** 728.3

- multiplex, congenita 754.89

Arthrokataclasis 715.35**Arthrolithiasis** 274.0**Arthro-onychodysplasia** 756.89**Arthro-osteo-onychodysplasia** 756.89**Arthropathy** (see also Arthritis) 716.9 ⑤

Note – Use the following fifth-digit subclassification with categories 711-712, 716:

- 0 site unspecified
- 1 shoulder region
- 2 upper arm
- 3 forearm
- 4 hand
- 5 pelvic region and thigh
- 6 lower leg
- 7 ankle and foot
- 8 other specified sites
- 9 multiple sites

Behçet's 136.1 [711.2] ⑤

Charcôt's 094.0 [713.5]

diabetic 250.6 ⑤ [713.5]

syringomyelic 336.0 [713.5]

tabetic 094.0 [713.5]

crystal (-induced) – see Arthritis, due to crystals

gouty 274.0

neurogenic, neuropathic (Charcôt's) (tabetic)

094.0 [713.5]

diabetic 250.6 ⑤ [713.5]

nonsyphilitic NEC 349.9 [713.5]

syringomyelic 336.0 [713.5]

postsyphilitic NEC 009.0 [711.3] ⑤

postrheumatic, chronic (Jaccoud's) 714.4

psoriatic 696.0

pulmonary 731.2

specified NEC 716.8 ⑤

syringomyelia 336.0 [713.5]

tabes dorsalis 094.0 [713.5]

tabetic 094.0 [713.5]

transient 716.4 ⑤

traumatic 716.1 ⑤

uric acid 274.0

Arthropyte (see also Loose, body, joint) 718.1 ⑤**Arthropytis** 719.80

- ankle 719.87
- elbow 719.82
- foot 719.87
- hand 719.84
- hip 719.85
- knee 719.86
- multiple sites 719.89
- pelvic region 719.85

Arthropytis – continued

- shoulder (region) 719.81
- specified site NEC 719.88
- wrist 719.83

Arthropytis (see also Arthritis, pyogenic) 711.0 ⑤**Arthroscopic surgical procedure converted to open procedure** V64.43**Arthrosis** (deformans) (degenerative) (see also

- Osteoarthritis) 715.9 ⑤
- Charcôt's 094.0 [713.5]
- polyarticular 715.09
- spine (see also Spondylosis) 721.90

Arthus phenomenon 995.21

due to

- correct substance properly administered 995.21
- overdose or wrong substance given or taken 977.9
- specified drug – see Table of Drugs and Chemicals
- serum 999.5

Articular – see also condition

- disc disorder (reducing or non-reducing) 524.63
- spondylolisthesis 756.12

Articulation

- anterior 524.27
- posterior 524.27
- reverse 524.27

Artificial

- device (prosthetic) – see Fitting, device
- insemination V26.1
- menopause (states) (symptoms) (syndrome) 627.4
- opening status (functioning) (without complication) V44.9
- anus (colostomy) V44.3
- colostomy V44.3
- cystostomy V44.50
 - appendico-vesicostomy V44.52
 - cutaneous-vesicostomy V44.51
 - specified type NEC V44.59
- enterostomy V44.4
- gastrostomy V44.1
- ileostomy V44.2
- intestinal tract NEC V44.4
- jejunostomy V44.4
- nephrostomy V44.6
- specified site NEC V44.8
- tracheostomy V44.0
- ureterostomy V44.6
- urethrostomy V44.6
- urinary tract NEC V44.6
- vagina V44.7
- vagina status V44.7

ARV (disease) (illness) (infection) – see Human immunodeficiency virus (disease) (illness) (infection)**Arytenoid** – see condition**Asbestosis** (occupational) 501**Asboe-Hansen's disease** (incontinentia pigmenti) 757.33**Ascariasis** (intestinal) (lung) 127.0**Ascariasis** 127.0**Ascariasis** 127.0**Ascaris** 127.0

- lumbricoides (infestation) 127.0
- pneumonia 127.0

Ascending – see condition**ASC-H** (atypical squamous cells cannot exclude high grade squamous intraepithelial lesion) 795.02**Aschoff's bodies** (see also Myocarditis, rheumatic) 398.0**Ascites** 789.59

- abdominal NEC 789.59
- cancerous (M8000/6) 789.51
- cardiac 428.0
- chylous (nonfilarial) 457.8
 - filarial (see also Infestation, filarial) 125.9
- congenital 778.0
 - due to S. japonicum 120.2
- fetal, causing fetopelvic disproportion 653.7 ⑤
- heart 428.0
- joint (see also Effusion, joint) 719.0 ⑤
- malignant (M8000/6) 789.51
- pseudochylous 789.59
- syphilitic 095.2
- tuberculous (see also Tuberculosis) 014.0 ⑤

Ascorbic acid (vitamin C) deficiency (scurvy) 267**ASC-US** (atypical squamous cells of undetermined significance) 795.01**ASCVD** (arteriosclerotic cardiovascular disease) 429.2**Aseptic** – see condition**Asherman's syndrome** 621.5**Asialia** 527.7**Asiatic cholera** (see also Cholera) 001.9**Asocial personality or trends** 301.7**Asomatognosia** 781.8**Aspergillosis** 117.3

- with pneumonia 117.3 [484.6]
- allergic bronchopulmonary 518.6
- nonsyphilitic NEC 117.3

Aspergillus (flavus) (fumigatus) (infection) (terreus) 117.3**Aspermatogenesis** 606.0**Aspermia** (testis) 606.0**Asphyxia, asphyxiation** (by) 799.01

- antenatal – see Distress, fetal
- bedclothes 994.7
- birth (see also Asphyxia, newborn) 768.9
- bunny bag 994.7
- carbon monoxide 986
- caul (see also Asphyxia, newborn) 768.9
- cave-in 994.7
 - crushing – see Injury, internal, intrathoracic organs
- constriction 994.7
- crushing – see Injury, internal, intrathoracic organs
- drowning 994.1
- fetal, affecting newborn 768.9
- food or foreign body (in larynx) 933.1
 - bronchioles 934.8
 - bronchus (main) 934.1
 - lung 934.8
 - nasopharynx 933.0
 - nose, nasal passages 932
 - pharynx 933.0
 - respiratory tract 934.9
 - specified part NEC 934.8
 - throat 933.0
 - trachea 934.0
- gas, fumes, or vapor NEC 987.9
 - specified – see Table of Drugs and Chemicals
- gravitational changes 994.7
- hanging 994.7
- inhalation – see Inhalation
- intrauterine
 - fetal death (before onset of labor) 768.0
 - during labor 768.1
 - liveborn infant – see Distress, fetal, liveborn infant
- local 443.0
- mechanical 994.7
 - during birth (see also Distress, fetal) 768.9
- mucus 933.1
 - bronchus (main) 934.1
 - larynx 933.1
 - lung 934.8
 - nasal passages 932
 - newborn 770.18
 - pharynx 933.0
 - respiratory tract 934.9
 - specified part NEC 934.8
 - throat 933.0
 - trachea 934.0
- vaginal (fetus or newborn) 770.18
- newborn 768.9
 - with neurologic involvement 768.5
 - blue 768.6
 - livida 768.6
 - mild or moderate 768.6
 - pallida 768.5
 - severe 768.5
 - white 768.5
- pathological 799.01
- plastic bag 994.7
- postnatal (see also Asphyxia, newborn) 768.9
 - mechanical 994.7
- pressure 994.7
- reticularis 782.61
- strangulation 994.7
- submersion 994.1
- traumatic NEC – see Injury, internal, intrathoracic organs
- vomiting, vomitus – see Asphyxia, food or foreign body

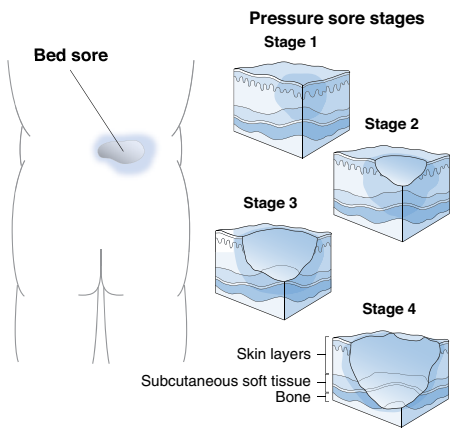
- 4 **707 Chronic ulcer of skin**
 - Includes** non-infected sinus of skin
non-healing ulcer
 - Excludes** specific infections classified under "Infectious and Parasitic Diseases" (001.0-136.9)
varicose ulcer (454.0, 454.2)

AHA: 4Q 2004, 92

- 5 **707.0 Decubitus ulcer**
 - Bed sore
 - Decubitus ulcer [any site]
 - Plaster ulcer
 - Pressure ulcer

AHA: 1Q 2004, 14; 4Q 2003, 110; 4Q 1999, 20; 1Q 1996, 15; 3Q 1990, 15; Nov-Dec 1987, 9

Sacral decubitus ulcer



- 707.00 Unspecified site** CC
CC Ex: 707.0, 707.8–707.9, 709.8
- 707.01 Elbow** HAC CC
CC Ex: See 707.00
- 707.02 Upper back** HAC MCC
Shoulder blades
CC Ex: See 707.00
- 707.03 Lower back** HAC MCC
Sacrum
CC Ex: See 707.00
AHA: 1Q 2005, 16
- 707.04 Hip** HAC MCC
CC Ex: See 707.00
- 707.05 Buttock** HAC MCC
CC Ex: See 707.00
- 707.06 Ankle** HAC MCC
CC Ex: See 707.00
- 707.07 Heel** HAC MCC
CC Ex: See 707.00
AHA: 1Q 2005, 16
- 707.09 Other site** CC
Head
CC Ex: See 707.00
- 5 **707.1 Ulcer of lower limbs, except decubitus**
 - Ulcer, chronic, of lower limb:
 - neurogenic of lower limb
 - trophic of lower limb
 - Code, if applicable, any causal condition first:
 - atherosclerosis of the extremities with ulceration (440.23)
 - chronic venous hypertension with ulcer (459.31)
 - chronic venous hypertension with ulcer and inflammation (459.33)
 - diabetes mellitus (250.80-250.83)
 - postphlebotic syndrome with ulcer (459.11)
 - postphlebotic syndrome with ulcer and inflammation (459.13)

AHA: 4Q 2000, 44; 4Q 1999, 15
- 707.10 Ulcer of lower limb, unspecified** CC
CC Ex: 707.10–707.15, 707.19, 707.8–707.9, 709.8
AHA: 3Q 2004, 5; 4Q 2002, 43
- 707.11 Ulcer of thigh** CC
CC Ex: See 707.10

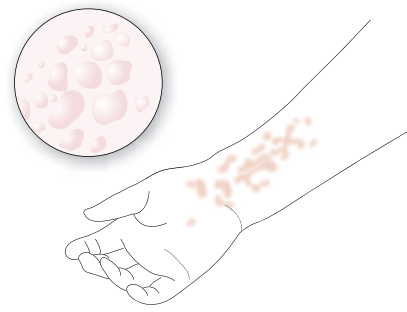
- 707.12 Ulcer of calf** CC
CC Ex: See 707.10
- 707.13 Ulcer of ankle** CC
CC Ex: See 707.10
- 707.14 Ulcer of heel and midfoot** CC
Plantar surface of midfoot
CC Ex: See 707.10
- 707.15 Ulcer of other part of foot**
Toes
CC Ex: See 707.10
- 707.19 Ulcer of other part of lower limb** CC
CC Ex: See 707.10
- 707.8 Chronic ulcer of other specified sites**
Ulcer, chronic, of other specified sites:
 - neurogenic of other specified sites
 - trophic of other specified sites

CC Ex: 707.10–707.15, 707.19
- 707.9 Chronic ulcer of unspecified site**
Chronic ulcer NOS
Trophic ulcer NOS
Tropical ulcer NOS
Ulcer of skin NOS
CC Ex: See 707.8

- 4 **708 Urticaria**
 - Excludes** edema:
 - angioneurotic (995.1)
 - Quincke's (995.1)
 - hereditary angioedema (277.6)
 - urticaria:
 - giant (995.1)
 - papulosa (Hebra) (698.2)
 - pigmentosa (juvenile) (congenital) (757.33)
- 708.0 Allergic urticaria**

Allergic urticaria

Characterized by smooth, raised pink or white bumps that appear on or beneath the skin



- 708.1 Idiopathic urticaria**
- 708.2 Urticaria due to cold and heat**
Thermal urticaria
- 708.3 Dermatographic urticaria**
Dermatographia
Factitial urticaria
- 708.4 Vibratory urticaria**
- 708.5 Cholinergic urticaria**
Hives that occur in response to a rise in body temperature, such as from exercise, stress, or overheating.
- 708.8 Other specified urticaria**
Nettle rash
Urticaria:
 - chronic recurrent periodic
- 708.9 Urticaria, unspecified**
Hives NOS
- 4 **709 Other disorders of skin and subcutaneous tissue**
 - 5 **709.0 Dyschromia**
 - Excludes** albinism (270.2)
pigmented nevus (216.0-216.9)
that of eyelid (374.52-374.53)

Disorder of skin pigmentation.
 - 709.00 Dyschromia, unspecified**
 - 709.01 Vitiligo**
White patches devoid of pigmentation appearing on otherwise normal skin.
 - 709.09 Other**

- 4 **V26 Procreative management**
 - V26.0 Tuboplasty or vasoplasty after previous sterilization**
AHA: 2Q 1995, 10
 - ⊖ **V26.1 Artificial insemination ♀**
 - 5 **V26.2 Investigation and testing**
Excludes postvasectomy sperm count (V25.8)
AHA: 4Q 2000, 56
 - ⊖ **V26.21 Fertility testing**
Fallopian insufflation
Sperm count for fertility testing
Excludes genetic counseling and testing (V26.31-V26.39)
 - ⊖ **V26.22 Aftercare following sterilization reversal**
Fallopian insufflation following sterilization reversal
Sperm count following sterilization reversal
 - ⊖ **V26.29 Other investigation and testing**
AHA: 2Q 1996, 9; Nov-Dec, 1985, 15
 - 5 **V26.3 Genetic counseling and testing**
Excludes fertility testing (V26.21)
nonprocreative genetic screening (V82.71, V82.79)
AHA: 4Q 2005, 96
Coding Guidelines Note: Counseling codes are not necessary for use in conjunction with a diagnosis code when counseling component of care is considered integral to standard treatment.
 - ⊖ **V26.31 Testing of female for genetic disease carrier status ♀**
 - ⊖ **V26.32 Other genetic testing of female ♀**
Use additional code to identify habitual aborter (629.81, 646.3)
 - ⊖ **V26.33 Genetic counseling**
 - ⊖ **V26.34 Testing of male for genetic disease carrier status ♂**
 - ⊖ **V26.35 Encounter for testing of male partner of habitual aborter ♂**
 - ⊖ **V26.39 Other genetic testing of male ♂**
 - 5 **V26.4 General counseling and advice**
Coding Guidelines Note: Counseling codes are not necessary for use in conjunction with a diagnosis code when counseling component of care is considered integral to standard treatment.
 - ⊖ **V26.41 Procreative counseling and advice using natural family planning**
 - ⊖ **V26.49 Other procreative management counseling and advice**
 - 5 **V26.5 Sterilization status**
Coding Guidelines Note: Status codes indicate that a patient is either a carrier of a disease or has the sequelae or residual or a past disease/condition. A status code is informative and should not be used with a diagnosis code.
 - ⊖ **V26.51 Tubal ligation status ♀**
Excludes infertility not due to previous tubal ligation (628.0-628.9)
 - ⊖ **V26.52 Vasectomy status ♂**
 - 5 **V26.8 Other specified procreative management**
 - ⊖ **V26.81 Encounter for assisted reproductive fertility procedure cycle**
Patient undergoing in vitro fertilization cycle
Use additional code to identify the type of infertility
Excludes pre-cycle diagnosis and testing – code to reason for encounter
 - ⊖ **V26.89 Other specified procreative management**
 - ⊖ **V26.9 Unspecified procreative management**
- 4 **V27 Outcome of delivery**
Note: This category is intended for the coding of the outcome of delivery on the mother's record.
AHA: 2Q 1991, 16
- ⊖ **V27.0 Single liveborn ♀M**
AHA: 4Q 2005, 81; 2Q 2003, 9; 2Q 2002, 10; 1Q 2001, 10; 3Q 2000, 5; 4Q 1998, 77; 4Q 1995, 59; 1Q 1992, 9

- ⊖ **V27.1 Single stillborn ♀M**
- ⊖ **V27.2 Twins, both liveborn ♀M**
- ⊖ **V27.3 Twins, one liveborn and one stillborn ♀M**
- ⊖ **V27.4 Twins, both stillborn ♀M**
- ⊖ **V27.5 Other multiple birth, all liveborn ♀M**
- ⊖ **V27.6 Other multiple birth, some liveborn ♀M**
- ⊖ **V27.7 Other multiple birth, all stillborn ♀M**
- ⊖ **V27.9 Unspecified outcome of delivery ♀M**
- 4 **V28 Encounter for antenatal screening of mother**
Excludes abnormal findings on screening-code to findings
AHA: 1Q 2004, 11
- ⊖ **V28.0 Screening for chromosomal anomalies by amniocentesis ♀M**
- ⊖ **V28.1 Screening for raised alpha-fetoprotein levels in amniotic fluid ♀M**
- ⊖ **V28.2 Other screening based on amniocentesis ♀M**
- ⊖ **V28.3 Screening for malformation using ultrasonics ♀**
- ⊖ **V28.4 Screening for fetal growth retardation using ultrasonics ♀**
- ⊖ **V28.5 Screening for isoimmunization ♀**
- ⊖ **V28.6 Screening for Streptococcus B ♀M**
AHA: 4Q 1997, 46
- ⊖ **V28.8 Other specified antenatal screening ♀**
AHA: 3Q 1999, 16
- ⊖ **V28.9 Unspecified antenatal screening ♀**
- 4 **V29 Observation and evaluation of newborns for suspected condition not found**
Note: This category is to be used for newborns, within the neonatal period (the first 28 days of life), who are suspected of having an abnormal condition resulting from exposure from the mother or the birth process, but without signs or symptoms, and which, after examination and observation, is found not to exist.
AHA: 1Q 2000, 25; 4Q 1994, 47; 1Q 1994, 9; 4Q 1992, 21
- V29.0 Observation for suspected infectious condition N**
AHA: 1Q 2001, 10
- V29.1 Observation for suspected neurological condition N**
- V29.2 Observation for suspected respiratory condition N**
- ⊖ **V29.3 Observation for suspected genetic or metabolic condition N**
AHA: 2Q 2005, 21; 4Q 1998, 59, 68
- V29.8 Observation for other specified suspected condition N**
AHA: 2Q 2003, 15
- ⊖ **V29.9 Observation for unspecified suspected condition N**
AHA: 1Q 2002, 6

LIVEBORN INFANTS ACCORDING TO TYPE OF BIRTH (V30-V39)

Note: These categories are intended for the coding of liveborn infants who are consuming health care [e.g., crib or bassinet occupancy].

AHA: 1Q 2001, 10

The following fourth-digit subdivisions are for use with categories V30-V39:

- 5 **.0 Born in hospital**
- .1 Born before admission to hospital**
- .2 Born outside hospital and not hospitalized**

The following two fifth-digits are for use with the fourth-digit .0, Born in hospital:

- 0 delivered without mention of cesarean delivery**
- 1 delivered by cesarean delivery**

- 4 **V30 Single liveborn N**
(⊖ is only valid for fourth-digit "2")
(N only applies to fourth-digits "0" and "1")
AHA: 2Q 2003, 9; 4Q 1998, 46, 59; 1Q 1994, 9; For Code V30.00: 1Q 2004, 8, 16; 4Q 2003, 68; For Code V30.01: 4Q 2005, 88; For Code V30.1: 3Q 2006, 10-11
- 4 **V31 Twin, mate liveborn N**
(⊖ is only valid for fourth-digit "2")
(N only applies to fourth-digits "0" and "1")
AHA: 3Q 1992, 10
- 4 **V32 Twin, mate stillborn N**
(⊖ is only valid for fourth-digit "2")
(N only applies to fourth-digits "0" and "1")

- ✓ **35.92 Creation of conduit between right ventricle and pulmonary artery**
Creation of shunt between right ventricle and (distal) pulmonary artery
Excludes that associated with total repair of truncus arteriosus (35.83)
- ✓ **35.93 Creation of conduit between left ventricle and aorta**
Creation of apicoaortic shunt
Shunt between apex of left ventricle and aorta
- ✓ **35.94 Creation of conduit between atrium and pulmonary artery**
Fontan procedure
- ✓ **35.95 Revision of corrective procedure on heart**
Replacement of prosthetic heart valve poppet
Resuture of prosthesis of:
septum valve
Excludes complete revision-code to specific procedure
replacement of prosthesis or graft of:
septum (35.50-35.63)
valve (35.20-35.28)
- ✓ **35.96 Percutaneous valvuloplasty**
Percutaneous balloon valvuloplasty
AHA: 3Q 2004, 10
- ✓ **35.98 Other operations on septa of heart**
- ✓ **35.99 Other operations on valves of heart**

OPERATIONS ON VESSELS OF HEART (36)

Includes sternotomy (median) (transverse) as operative approach
thoracotomy as operative approach

Code also any:

- cardiopulmonary bypass, if performed [extracorporeal circulation] [heart-lung machine] (39.61)
- injection or infusion of platelet inhibitor (99.20)
- injection or infusion of thrombolytic agent (99.10)

- 4 **36.0 Removal of coronary artery obstruction and insertion of stent(s)**
AHA: 2Q 1990, 24; Jul-Aug 1985, 8

- ✓ **36.03 Open chest coronary artery angioplasty**
Coronary (artery):
endarterectomy (with patch graft)
thromboendarterectomy (with patch graft)
Open surgery for direct relief of coronary artery obstruction
Code also any:
insertion of drug-eluting coronary stent(s) (36.07)
insertion of non-drug-eluting coronary stent(s) (36.06)
number of vascular stents inserted (00.45-00.48)
number of vessels treated (00.40-00.43)
procedure on vessel bifurcation (00.44)
Excludes that with coronary artery bypass graft (36.10-36.19)

AHA: 3Q 1993, 7

- ✗ **36.04 Intracoronary artery thrombolytic infusion**
That by direct coronary artery injection, infusion, or catheterization:
enzyme infusion
platelet inhibitor
Excludes infusion of platelet inhibitor (99.20)
infusion of thrombolytic agent (99.10)
that associated with any procedure in 36.03

- ✗ **36.06 Insertion of non-drug-eluting coronary artery stent(s)**
Bare stent(s)
Bonded stent(s)
Drug-coated stent(s), i.e. heparin coated
Endograft(s)
Endovascular graft(s)
Stent grafts
Code also any:
number of vascular stents inserted (00.45-00.48)
number of vessels treated (00.40-00.43)
open chest coronary artery angioplasty (36.03)
percutaneous transluminal coronary angioplasty [PTCA] or coronary atherectomy (00.66)
procedure on vessel bifurcation (00.44)
Excludes insertion of drug-eluting coronary artery stent(s) (36.07)

- ✓ **36.07 Insertion of drug-eluting coronary artery stent(s)**
Endograft(s)
Endovascular graft(s)
Stent graft(s)
Code also any:
number of vascular stents inserted (00.45-00.48)
number of vessels treated (00.40-00.43)
open chest coronary artery angioplasty (36.03)
percutaneous transluminal coronary angioplasty [PTCA] or coronary atherectomy (00.66)
procedure on vessel bifurcation (00.44)
Excludes drug-coated stents, e.g., heparin coated (36.06)
insertion of non-drug-eluting coronary artery stent(s) (36.06)

AHA: 4Q 2005, 105, 106

- ✓ **36.09 Other removal of coronary artery obstruction**
Coronary angioplasty NOS
Code also any:
number of vascular stents inserted (00.45-00.48)
number of vessels treated (00.40-00.43)
procedure on vessel bifurcation (00.44)
Excludes that by open angioplasty (36.03)
that by percutaneous transluminal coronary angioplasty [PTCA] or coronary atherectomy (00.66)

- 4 **36.1 Bypass anastomosis for heart revascularization**
Note: Do not assign codes from series 00.40-00.43 with codes from series 36.10-36.19

Code also:

- cardiopulmonary bypass [extracorporeal circulation] [heart-lung machine] (39.61)
- pressurized treatment of venous bypass graft [conduit] with pharmaceutical substance, if performed (00.16)

AHA: 3Q 1993, 7; 2Q 1990, 24; 1Q 1989, 8

- ✓ **36.10 Aortocoronary bypass for heart revascularization, not otherwise specified** HAC MCC
Direct revascularization:
cardiac with catheter stent, prosthesis, or vein graft
coronary with catheter stent, prosthesis, or vein graft
heart muscle with catheter stent, prosthesis, or vein graft
myocardial with catheter stent, prosthesis, or vein graft
Heart revascularization NOS

AHA: 4Q 1989, 3-5

- ✓ **36.11 (Aorto)coronary bypass of one coronary artery** HAC MCC
AHA: 3Q 2002, 4-9; 2Q 1996, 6-8; 4Q 1989, 3-5

- ✓ **36.12 (Aorto)coronary bypass of two coronary arteries** HAC MCC
AHA: 3Q 2002, 4-9; 4Q 1999, 15-16; 2Q 1996, 6-8; 1Q 1991, 7-9; 4Q 1989, 3-5

- ✓ **36.13 (Aorto)coronary bypass of three coronary arteries** HAC MCC
AHA: 3Q 2002, 4-9; 2Q 1996, 6-8; 1Q 1991, 7-9; 4Q 1989, 3-5

- ✓ **36.14 (Aorto)coronary bypass of four or more coronary arteries** HAC MCC
AHA: 3Q 2002, 4-9; 2Q 1996, 6-8; 1Q 1991, 7-9; 4Q 1989, 3-5

- ✓ **36.15 Single internal mammary-coronary artery bypass** HAC MCC
Anastomosis (single):
mammary artery to coronary artery
thoracic artery to coronary artery
AHA: 3Q 2002, 4-9; 4Q 1999, 15-16; 2Q 1996, 6-8; 1Q 1991, 7-9; 3Q 1990, 12; 4Q 1989, 3-5

Coronary artery bypass

