

applications & TOOLS

**CEMAT V7.1
Manual**

Hotfix Installation

SIEMENS

Warranty, Liability and Support

We accept no liability for information contained in this document.

Any claims against us - based on whatever legal reason - resulting from the use of the examples, information, programs, engineering and performance data etc., described in this document shall be excluded. Such an exclusion shall not apply in the case of mandatory liability, e.g. under the German Product Liability Act ("Produkthaftungsgesetz"), in case of intent, gross negligence, or injury of life, body or health, guarantee for the quality of a product, fraudulent concealment of a deficiency or breach of a condition which goes to the root of the contract ("wesentliche Vertragspflichten"). However, claims arising from a breach of a condition which goes to the root of the contract shall be limited to the foreseeable damage which is intrinsic to the contract, unless caused by intent or gross negligence or based on mandatory liability for injury of life, body or health. The above provisions do not imply a change in the burden of proof to your detriment.

The Application Examples are not binding and do not claim to be complete regarding the circuits shown, equipping and any eventuality. They do not represent customer-specific solutions. They are only intended to provide support for typical applications. You are responsible for ensuring that the described products are used correctly. These Application Examples do not relieve you of the responsibility in safely and professionally using, installing, operating and servicing equipment. By using this application example you accept that Siemens is not liable for any damages except for those specified in the above liability clause. We reserve the right to make changes to these Application Examples at any time without prior notice. If there are any deviations between the recommendations provided in this application example and other Siemens publications – e.g. Catalogs – the contents of the other documents have priority.

Copyright© 2008 Siemens A&D. It is not permissible to transfer or copy these Application Examples or excerpts of them without first having prior authorization from Siemens A&D in writing.

1	CEMAT V7.1 HOTFIX INSTALLATION ENGLISH	4
1.1	To do on all Stations	4
1.2	To do only on Engineering Stations	6
1.3	Updating the AS	7
1.4	Updating the AS with Project Standards	8
1.5	Compile and download	8
2	CEMAT V7.1 HOTFIX INSTALLATION DEUTSCH	9
3	CEMAT HOTFIX UPDATE TOOL	11

1 CEMAT V7.1 Hotfix Installation english

If Your Plant uses a special project standard of CEMAT then please take care to use the right Installation No.

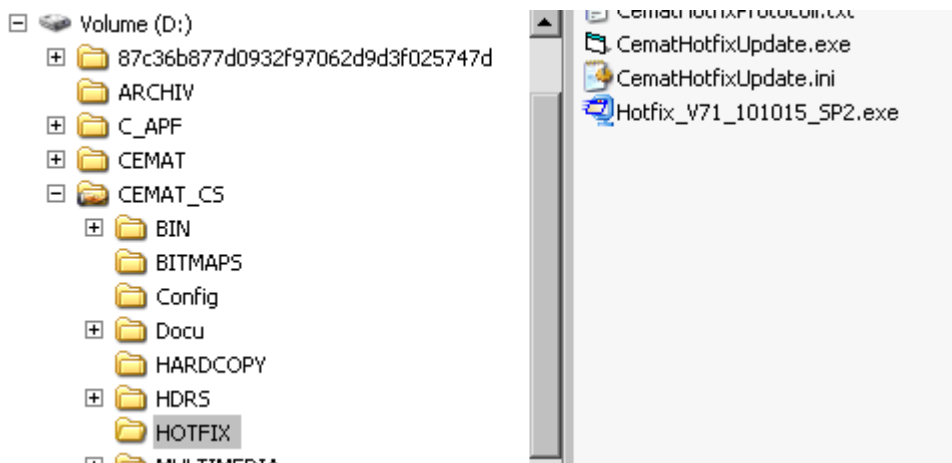
000	CEMAT Standard
004	Holcim
006	Dyckerhoff
007	Heidelberger Zement
023	Vigier
024	Bushehr, Cosmos, Darab
025	Caima
026	Alsen
027	Lafarge
028	Cementi Rossi

The information about the actual installed software version you will find in --d:\CEMAT_CS\Config\Version.cfg .

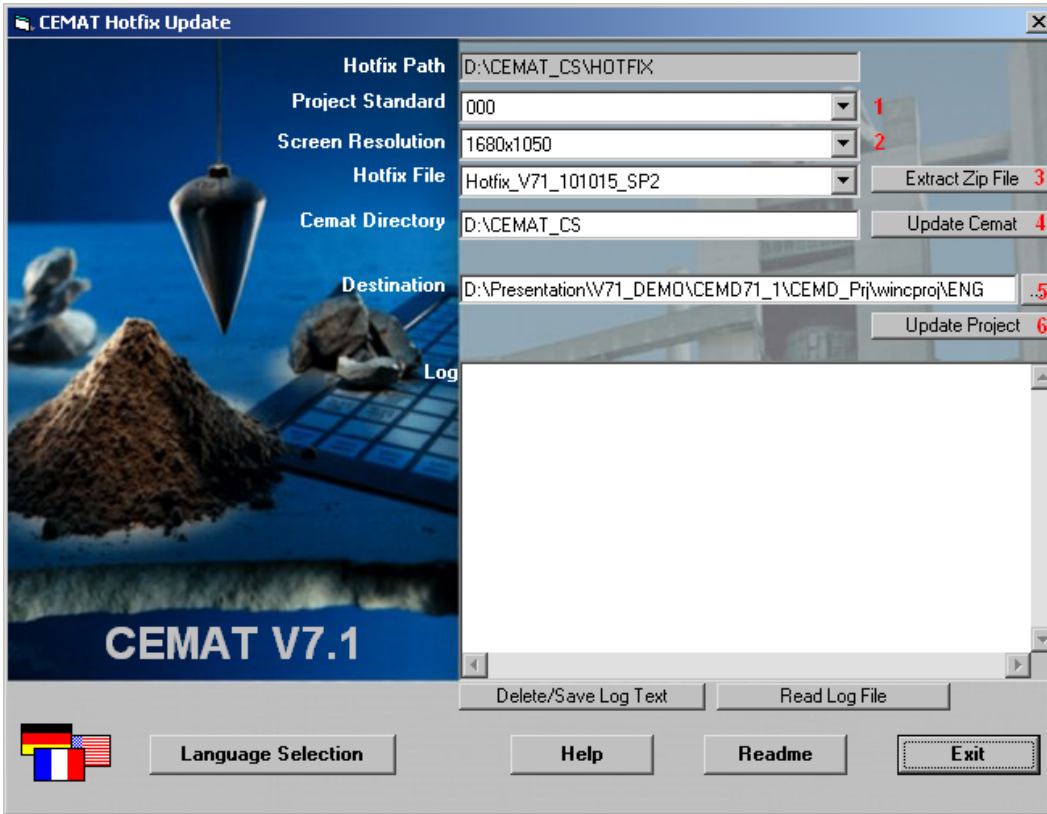
1.1 To do on all Stations

This action has to be executed on all CEMAT stations.

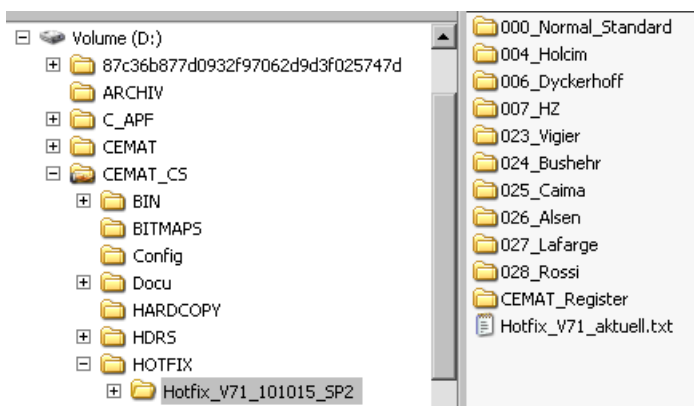
1. Restart all station
2. Copy the zip file "Hotfix_V71_yymmdd_xx.exe" to the folder **D:\CEMAT_CS\HOTFIX** (not in an other folder!)



3. Start the program CematHotfixUpdate.exe. (For more information press "Help")



4. Choose the project standard (1) and screen resolution (2).
5. Choose the hotfix file - then press the button "Extract Zip File" (3)



(The zip file Hotfix_V71_yymmdd_xx.exe is unzipped into a subdirectory of D:\CEMAT_CS\HOTFIX)

6. Press button "Update Cemat" (4)
- a DOS box is also opened for the installation of the CEMAT controls. (this is the reason why the PC must be started newly)

Now CEMAT_CS is updated and the CEMAT Controls are installed.

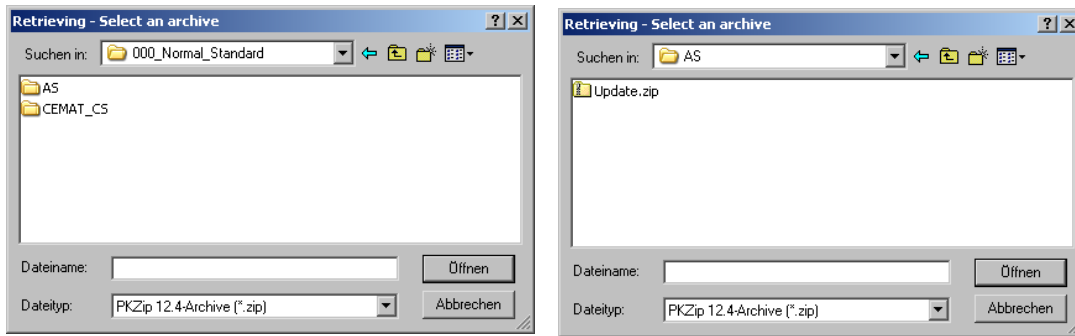
1.2 To do only on Engineering Stations

The next action has to be executed only on the CEMAT engineering station.

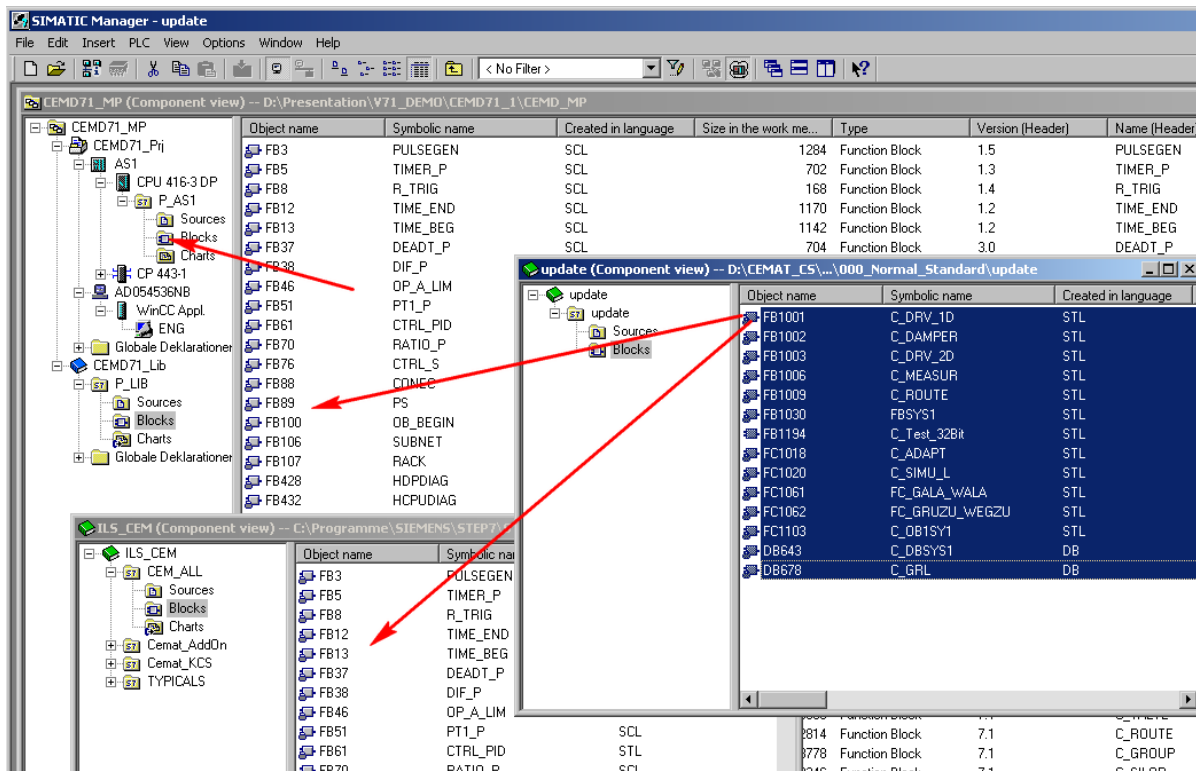
1. Choose the WinCC OS Project (5)
(The destination is initialized with the project which is last updated or closed)
2. Press button "Update Project" (6).
3. After the update of the WinCC Project, proceed as follows:
 - Open the WinCC Project.
 - Open 'Global Script' selecting C-Editor and regenerate Header.
(Menu Options -> Regenerate Header).
4. This step 1 to 3 has to be repeated for every OS project. (Server project, multi client project,...)

1.3 Updating the AS

1. update.zip is an archived S7-Library, please follow the instruction below.
2. Retrieve with the SIMATIC Manager this library in the same folder and open it.



3. Open the library C:\Programme\Siemens\Step7\S7libs\ILS_CEM
4. Transfer all blocks from update into ILS_CEM
5. Transfer all blocks from update into the project library and into each PLC of your project



1.4 Updating the AS with Project Standards

If you have an project standard (Install key is <> 000) you have to update the PRO_CEM as well.

- Retrieve with the SIMATIC Manager this library in the same folder (e.g. "004")
- Copy all modules from LIB „update“ of directory „,004“ into C:\..Siemens\Step7\S7libs\PRO_CEM and project library.
- Transfer then all blocks from the project library into each PLC of your project.

The screenshot shows three windows in SIMATIC Manager:

- CEMD71_MP (Component view):** A tree view on the left shows the project structure. A table on the right lists various function blocks (FB3 to FB428) with their symbolic names and languages (SCL or STL).
- update (Component view):** A smaller window showing a sub-library named 'update' containing function blocks FB1001 through FB1010. Red arrows point from these blocks to the PRO_CEM window.
- PRO_CEM (Component view):** A window showing the target library with a table of function blocks. Red arrows point to FB1001, FB1002, and FB1003, indicating they have been copied from the 'update' library.

Object name	Symbolic name	Created in language	Size in the work me...	Type
FB3	PULSEGEN	SCL	1284	Function Block
FB5	TIMER_P	SCL	702	Function Block
FB8	R_TRIG			
FB12	TIME_END			
FB13	TIME_BEG			
FB37	DEADT_P			
FB38	DIF_P			
FB46	OP_A_LIM			
FB51	PT1_P			
FB61	CTRL_PID			
FB70	RATIO_P			
FB76	CTRL_S			
FB88	CONEC			
FB89	PS			
FB100	OB_BEGIN			
FB106	SUBNET			
FB107	RACK	SCL	7496	Function Block
FB428	HDPDIAG	SCL	4530	Function Block

Object name	Symbolic name	Created in lang
FB1001	C_DRV_1D	STL
FB1002	C_DAMPER	STL
FB1003	C_DRV_2D	STL
FB1007	C_VALVE	STL
FB1008	C_PROFB	STL
FB1009	C_ROUTE	STL
FB1010	C_GROUP	STL
FB1011	C_SILOP	STL
FB1095	C_TIS_B	STL
FB1096	C_TIS_N	STL
FB1097	C_TIS_S	STL

- In order to update the blocks in the chart folder, open a CFC, Options -> Block Types, select the blocks and press new version

1.5 Compile and download

1. Compile and download to each AS
2. Compile OS for all Server- or Single Stations

2 CEMAT V7.1 Hotfix Installation deutsch

Einige Werke benutzen eine spezielle Ausführung des CEMAT Standard.
Bitte achten Sie darauf, den richtigen Installations- Schlüssel einzugeben.

CEMAT - Installations Schlüssel

000	CEMAT Standard
004	Holcim
006	Dyckerhoff
007	Heidelberger Zement
023	Vigier
024	Bushehr, Cosmos, Darab
025	Caima
026	Alsen
027	Lafarge
028	Cementi Rossi

Die Information über die installierte CEMAT Version finden Sie in der Datei:
d:\CEMAT_CS\Config\Version.cfg

Diese Aktionen sind auf allen CEMAT Stationen auszuführen

1. Alle Rechner booten
2. Zip-Datei "Hotfix_V71_yymmdd.exe" nach D:\CEMAT_CS\HOTFIX\ kopieren
(genau dahin; nicht in ein anderes Verzeichnis oder Unterverzeichnis)
3. CematHotfixUpdate.exe starten (Programm kann auf deutsch eingestellt werden; mehr Information mit der Taste "Hilfe")
4. Projektstandard und Bildschirmauflösung einstellen
 - 4.1 Hotfixdatei selektieren - dann Button "Zip File Extrahieren" (Die Zip-Datei Hotfix_V71_ yymmdd.exe entpackt sich dann selber in ein Unterverzeichnis von CEMAT_CS\HOTFIX)
 - 4.2 Cemat aktualisieren (dabei wird auch eine Dos-Box geöffnet um die CEMAT Controls zu installieren - deswegen muss der Rechner unbedingt gebootet worden sein)

Damit ist CEMAT_CS mit dem Hotfix aktualisiert und die CEMAT Controls sind installiert.

Die nächsten Aktionen sind nur auf der CEMAT Engineering Station auszuführen:

5. Ziel einstellen (Voreingestellt mit dem zuletzt **geschlossenen** WinCC-Projekt)
 - 5.1 Projekt aktualisieren
 - 5.2 Das nächste WinCC-Projekt einstellen und wieder Projekt aktualisieren
(besteht ja aus mehreren WinCC-Projekten (Server, MultiClients,...))
6. Nach der Aktualisierung des WinCC Projektes verfahren Sie wie folgt:
 - Öffnen Sie das WinCC Projekt.
 - Öffnen Sie 'Global Script', selektieren Sie den C-Editor und generieren Sie die Header neu.
(Menu Options -> Regenerate Header).

7. AS aktualisieren.

- update.zip ist eine archivierte S7-Bibliothek, bitte folgen Sie den Anweisungen.

7.1 Dearchivieren Sie mit dem SIMATIC Manager diese Bibliothek in das gleiche Verzeichnis (z.B. „000“).

7.2 Öffnen Sie den Bausteinbehälter und selektieren Sie alle Bausteine

7.3 Öffnen Sie die Bibliothek C:\...\Siemens\Step7\S7libs\ILS_CEM

7.4 Übertragen Sie alle Bausteine von update aus „000“ nach ILS_CEM

7.5 Übertragen Sie alle Bausteine von update aus „000“ in Ihre Projektbibliothek und dann in jede AS

ACHTUNG!!

Wenn Sie einen Projektstandard haben, (Install Key <> 0)
müssen Sie jetzt das zusätzlich das entsprechende update ausführen.

- Dearchivieren Sie mit dem SIMATIC Manager diese Bibliothek in das gleiche Verzeichnis (z.B. „004“).

- Übertragen Sie alle Bausteine von update aus z.B. „004“ nach
C:\...\Siemens\Step7\S7libs\PRO_CEM

- Übertragen Sie dann alle Bausteine von der PRO_CEM in Ihre Projektbibliothek und von dort
in jede AS.

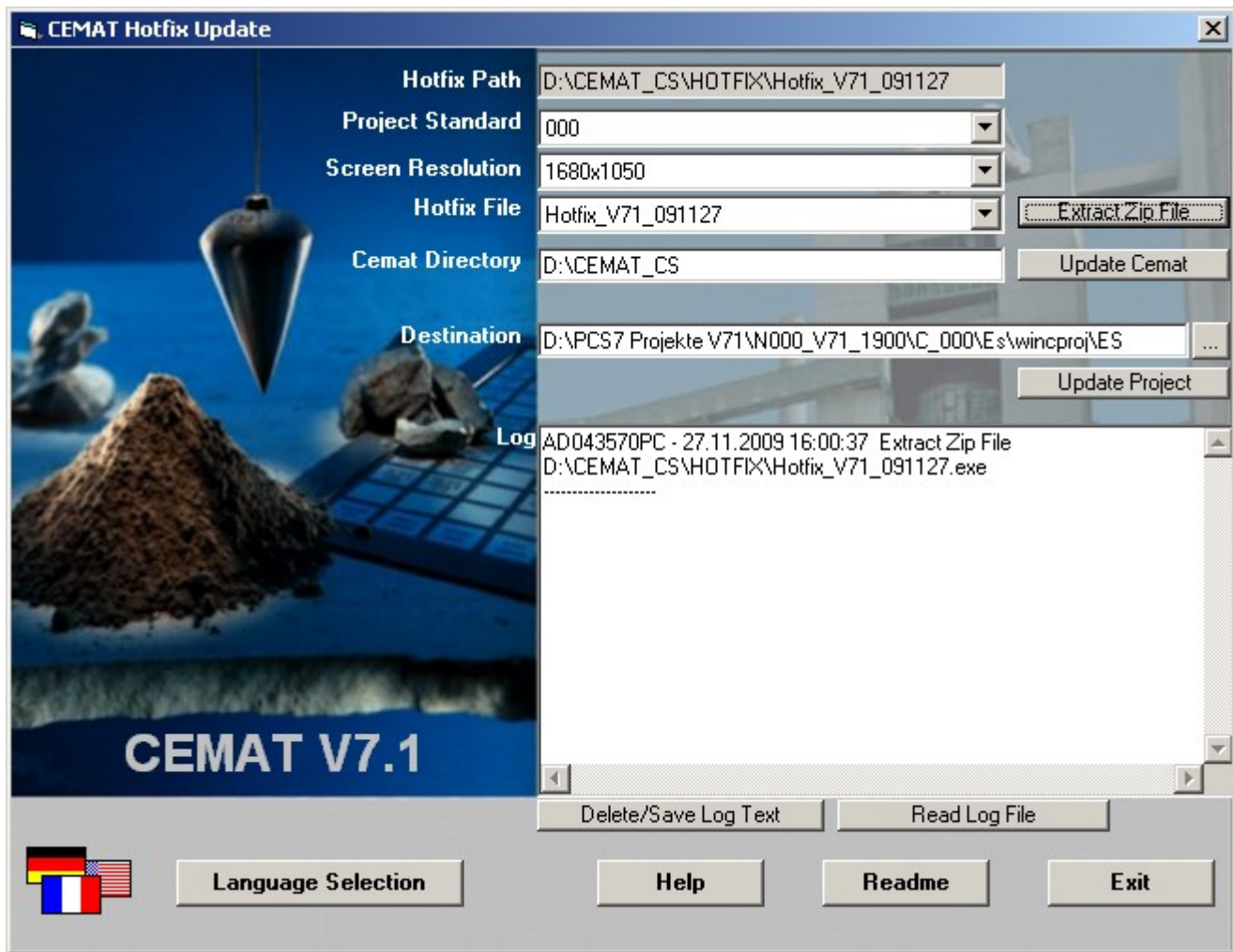
7.6 Zum Aktualisieren der Bausteine im Planbehälter öffnen Sie in jeder AS einen CFC

- unter Extras -> Bausteintypen selektieren Sie die Bausteine und drücken "neue Version"

7.7 Übersetzen und laden zu jeder AS

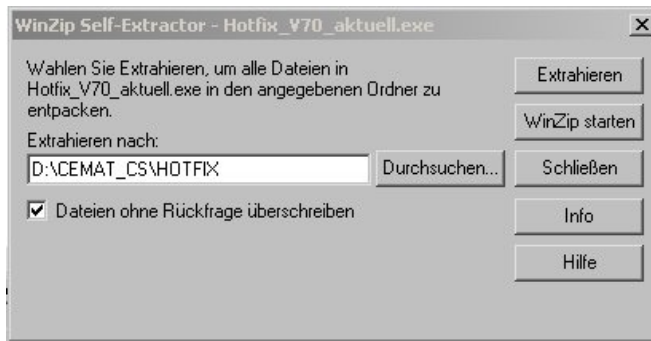
7.8 OS Übersetzen für alle Server- und Single Stations durchführen.

3 CEMAT Hotfix Update Tool



The tool tip text of the buttons displays additional information and settings. The text is shown if you move the cursor to the button.

- Hotfix Path** Shows the folder, where the Hotfix was retrieved. (D:\CEMAT_CS\HOTFIX\...)
- Project Standard** The installation key of the project standard. Please check whether this project standard matches with the installed standard. The default of the project standard is the installed version. It can be changed via pull down list.
- Screen Resolution** Choice of the screen resolution.
Following CEMAT resolution are supported at the moment:
1024x768
1680x1050
1920x1200
- Hotfix File** Shows the Hotfix file which shall be extracted and installed.
If more than one Hotfix files are available, a different file can be selected via pull down list. By default the latest version of the Hotfix is selected.
- Extract Zip File** The WinZip Self Extractor is started with click on the button.



With click on *Extracting* the Hotfix file is unpacked into the given folder.
The folder D:\CEMAT_CS\HOTFIX may not be changed.

Cemat Directory

Shows the CEMAT directory.
 With click on the button *Update Cemat* all files from the Hotfix are copied into this directory.

Update Cemat

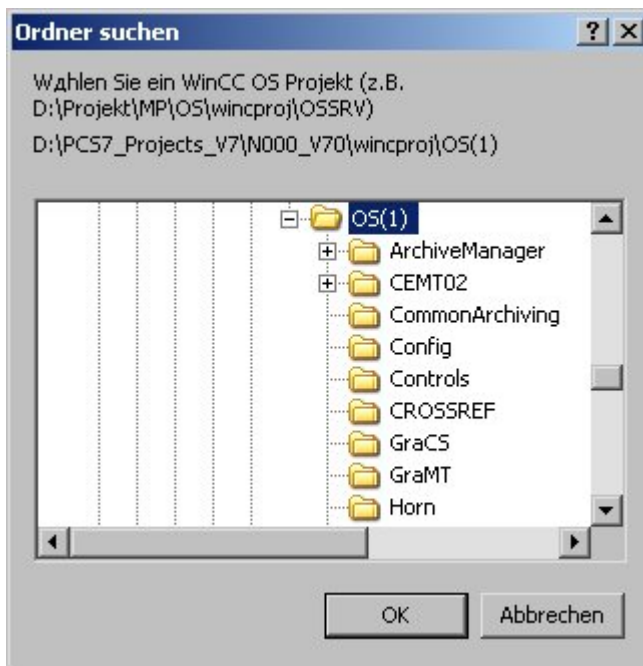
With click on this button the Hotfix is copied into the Cemat directory.
This action has to be executed on all CEMAT stations.

Destination

Shows the WinCC – OS project directory.
 The destination is initialized with the project which is last updated or opened. The subdirectories GraCS, library, PRT and WScripts do not need to be chosen.

...

With this button the destination can be chosen.



The subdirectories GraCS, library, PRT and WScripts do not need to be chosen.

Update Project

With click on this button the relevant Hotfix files are copied into destination.
 The adjusted screen resolution is already considers
 This step has to be repeated for every OS project.
This action has to be executed only on the CEMAT engineering station.

Log

The executed actions are recorded in this window.

Log Button

The button *Delete / Save Log Text* deletes the contents of the protocol window and saves it in the protocol file.
 The button *Read Log File* opens the protocol file.
 The protocol file is located in the directory: \CEMAT_CS\HOTFIX\CematHotfixProtocoll.txt

Exit	Exit the program.
Readme	Opens the file <i>Hotfix_V70_aktuell.txt</i> .
Help	Opens this file.
Language Selection	Selection of a different language.