

How to connect an Epson POS Printer with an Ethernet Adapter

Printers

TM-U220

Overview

TM-U200

Installing Adapter

Checking Adapter Settings

TM-U295

Configuring Adapter

Installing Driver

Troubleshooting

TM-U375

TM-T88III

Overview

TM-U88IV

An Ethernet connection uses the existing network to connect the computer to the POS printer. The printer plugs into the LAN and, once configured, the computer can use the printer like it was attached directly.

TM-T88V

Required Components

- Epson POS Printer with Connect-It Ethernet adapter
- Local Area Network (LAN) running TCP/IP
- Windows computer with LAN connection

Epson Printers Covered

- TM-T88III
- TM-T88IV
- TM-T88V
- TM-U220
- TM-U230
- TM-U590
- TM-U675
- TM-H6000III

TM-U675

TM-U590

TM-H6000

Power Supplies

Interface Cards

Cables

Ribbons

Paper



Step by Step Installation

The installation step vary slighting depending on the type of Ethernet card you have.

Over the past few years Epson has offered 3 types of Ethernet cards, Type II, II and IV. Each has a different set of features and a different way of setting them up.

Type II



Type III



Type IV



Click to select

Type IV

Installation Steps for Installing Ethernet Adapter (Type IV)

The Type IV module (UB-E02 or similar) is the latest type of Connect-It Ethernet adapter. The module can be set by accessing it directly using a web browser or by a configuration utility. This type of module can also act as a device type Print server to be used by more than 1 computer.

Installing and Setting the Connect-It Ethernet Adapter (Type IV)

Install the Connect-It Ethernet adapter into the Epson TM series printer



The Type IV adapter can replace the existing adapter and is held in place by 2 screws.

If changing a printer to Ethernet you must change the specific dip switch on the Epson printer to allow for the Ethernet card.

Model	Setting
TM-U200 Series	DIP SW 2-8: ON
TM-U210 Series	DIP SW 2-8: ON
TM-U220 Series (STD) *1	DIP SW2-8: ON
TM-U220 Series (US) *1	DIP SW2-4: ON
TM-U230 Series	DIP SW 2-4: ON
TM-U325 Series	DIP SW 2-8: ON
TM-U590 Series	DIP SW 2-8: ON
TM-U675 Series	DIP SW 2-8: ON
TM-T88/T88II/T88III	DIP SW 2-8: ON
TM-T90	MSW 1-8: ON
TM-H5000/H5000II	DIP SW 2-8: ON
TM-H6000/H6000II	DIP SW 2-8: ON
TM-J7000/J7100	MSW 1-8: ON
TM-J7500/J7600	MSW 1-8: ON
TM-J2000/J2100	MSW 1-8: ON
TM-L90	MSW 1-8: ON

(Key: *DIP SW2-8 On*: refers to slide switch number 8, on switch bank 2, is turned On)

Cabling

Use a regular LAN patch cord to connect the printer to the LAN.

RJ-45 Female (connector on computer and adapter end)



Ethernet cards use CAT5/6 patch cords



Getting initial printer and Ethernet adapter settings (Type IV)

Get the initial settings of the Ethernet adapter. Run the printer self test (hold down the feed button while turning on the printer). The printer will print a list of initial settings including interface type and buffer capacity. verify that the interface is "Ethernet"

A similar test can then be done on the UB-EO2 adapter by inserting a paperclip through the small hole in the adapter for 3 seconds.



A strip will print showing the MAC address, Gateway (GW), IP address and IP assignment method (manual/auto).

Changing the IP Address of the Adapter

Now comes the tricky part. To be able to change the IP address on the adapter you need to be able to connect with it. To do this you most likely need to change the IP address of your computer to a value that makes the adapter accessible. You can then connect to the adapter, make the change to the adapter, then return the computer back to its original settings.

Resetting the Adapter

You can reset the UB-E02 Ethernet Interface card to factory defaults by holding down the push button on the card (see arrow above) while turning on the printer power and continuing to hold it down for 5 seconds. This causes all internal settings to return to their factory defaults.

Setting the IP Address on your Computer

In Windows you can access the wired Ethernet adapter in the "Network Connections" applet in the Windows Control Panels (Internet Protocol/TCP/IP properties, allow you to enter an IP address.) Make a note of the existing settings, you'll be returning to those settings when your done. Set the IP address to an address in the same domain as the adapter. For example of the adapter shows an IP address of 172.16.10.63 you could change the computer to 172.16.10.2. *Do not set the computer to the same address as the Ethernet adapter on the printer.* You might have to reset the computer's adapter for the new settings to take place.

Logging onto the Adapter using TMNet WebConfig (Type II or Type IV)

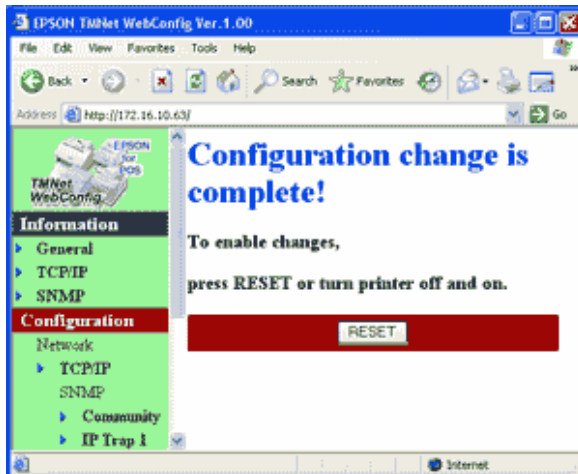
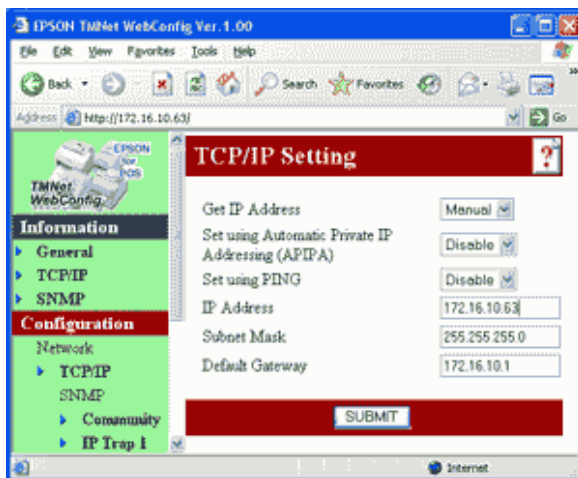
TMNet web configuration allows you to access the adapter via your network using a web browser. Generally speaking the adapter must be in the same sub domain as the computer to be able to log on (see previous section for how to configure the PC to the same subdomain)



Using a web browser such as Internet Explorer you should now be able to connect to the adapter by entering the IP address of the adapter directly into the address bar of the browser. The TMNet General Information page show open.

To change the IP address, select 'TCP/IP' under 'Configuration.' You can enter a new IP address and gateway address.

Press the 'Submit' button when done



The 'Submit' button will write settings to the printer. The Ethernet adapter is reset when you press the 'Reset' button.

Setting the IP Address using TMNet WinConfig (Type IV)

To use the UB-E02 with TCP/IP, you first need to set its IP address. You can set the IP address by using the EPSON TMNet WinConfig or arp/ping command.

Running the TMNet WinNet configuration utility on the Computer

Once connected you can run the TMNet configuration utility to view or change the settings on the Ethernet card.

To obtain the TMNet configuration utility from Epson:

1. You may have to re-enable your wired LAN port to download the EpsonTMNetWinConfig utility.
2. Download and Install Epson's TMNetWinConfig available from www.epsonexpert.com
3. You WILL be REQUIRED to log in to access these drivers.
4. If you do not have a log in, you will be required to register for this service (this is free and takes less than 10 minutes). This is a process controlled by Epson not Beagle Hardware.
5. Click on TECHNICAL RESOURCES
6. Select Ethernet INTERFACES under the CONNECT-IT INTERFACES
7. Click the download icon for the TMNetWinConfig
8. For detailed installation instructions, click [here](#).

Setting the IP Address using EPSON TMNet WinConfig

1. Set the TCP/IP of your operating system.
2. Install the EPSON TMNet WinConfig.
3. Set the IP address using EPSON TMNet WinConfig.

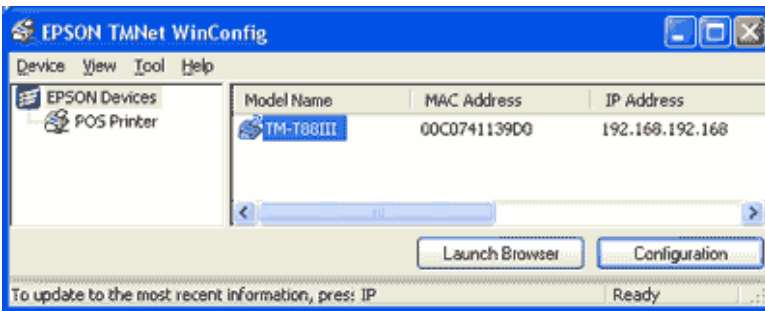
The utility will scan for and should list the Ethernet printer.

Printer
Sale! 
TM-U220
\$129

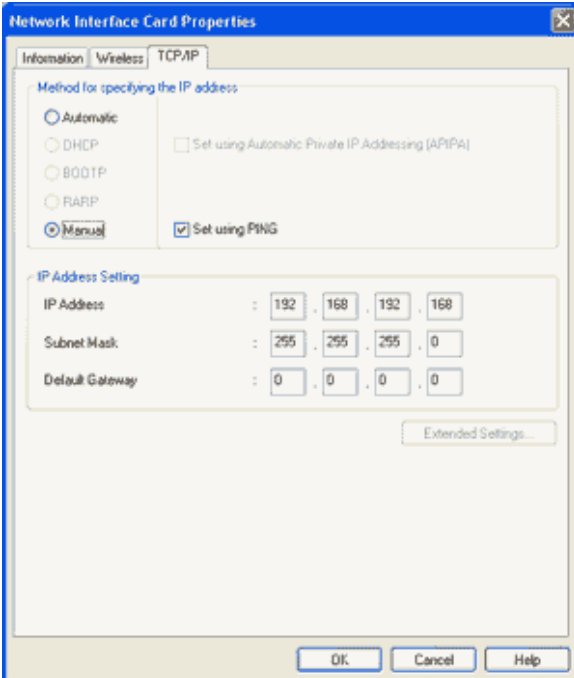
TM-U295
\$184

TM-U375
\$199

TM-
U675



Select the printer and press Configuration to view or change settings. (Pressing the Launch Browser button will contact the TMNet WebConfig interface using your web browser.)



When you make changes and press 'OK' the utility sends the new settings to the printer and resets the printer. Note: the default password is <blank>. Don't forget to make the same changes on the computer side to maintain connectivity.

Type II

Configuration of Ethernet Type II Module

The earlier type of Epson Connect-It interface used a manual configuration scheme and a simple web interface. The Type II module can be identified by the red or blue 8 position DIP switch visible on the front of the adapter



An Epson Type II Ethernet Interface Adapter

\$199

TM-H6000III
\$349

TM-T88II
\$109

TM-T88III
\$139

TM-T88IV
\$199

TM-T88V
\$259
New

TM-U200
\$99

DIP SWITCH SETTINGS FOR EPSON PRINTERS

TM-U200 series printers

Switch Bank 1		
All		OFF
Switch Bank 2		
2-2	Auto Cutter	Enable if Auto Cutter is present
2-7	Pin 8 reset signal	ON (enabled)
All Others		OFF

TM-U230 printer

Switch Bank 1		
All Others		OFF
Switch Bank 2		
2-2	Internal Use (Auto Cutter)	ON (Factory Default)
2-3	Pin 8 reset signal	ON (Enabled)
2-5	Paper Out LED	ON
All Others		OFF

TM-T90/L90, J7000/7100, J2000/2100 printers

Switch Bank 1		
1-2	Interface selection	ON (J2000/2100 = OFF)
All Others		OFF
Memory Switch Bank 1		
1-7	Pin 8 reset signal	ON (Enabled)
All Others		Default

TM-T88II/III, TM-H5000II, TM-U325, TM-U590, TM-U675, TM-H6000/H6000II/TransScan

Switch Bank 1		
All		OFF
Switch Bank 2		
2-7	Pin 8 Reset signal	ON (Enabled)
All Others		OFF

(Key: 2-7 On: refers to the switch number 7 is turned On)

Confirm the initial settings of the Printer

Run the printer self test (hold down the feed button while turning on the printer). The printer will print a list of initial settings including interface type and buffer capacity. Verify that the interface is "serial" for this type of Ethernet adapter.

Quick Test Printout, Type II Adapter

To get a configuration / status report with information about the printer and Ethernet module, along with maintenance counts and settings, do the following:

for PRINTERS with Cover Sensor

- Power the Printer up, with Ethernet Module installed .
- Pop the receipt printer cover
- Press the FEED button
- Close the receipt printer cover

NOTE: Wait for the green LED on the module to start blinking! If you proceed with this too quickly, the printout will indicate an UNKNOWN PRINTER. If this happens, cycle power, and wait for the Green LED to start blinking. - With the module connected to a Ethernet, this delay will be shorter than if there is no Ethernet connected and the modules spends longer looking for one.

for PRINTERS without Cover Sensor

- With a powered OFF module
- Set Dip-Switch 1 (on the module) to ON
- Power up the unit
- Status Report will print

Printer
Sale!

TM-U220
\$129

TM-U295
\$184

TM-U375
\$199

TM-U675
\$199

TM-H6000III
\$349

TM-T88II
\$109

TM-T88III
\$139

TM-T88IV
\$199

TM-T88V
\$259
New

TM-U200
\$99

Power down the unit

- Set Dip-Switch 1 to OFF
- Resume operations

Type III

Configuration of Ethernet Type III Module

Epson's "low-cost" Connect-It Ethernet Interface used a manual configuration scheme and no web interface. The Type III module can be identified by the red or blue position DIP switch visible on the front of the adapter



An Epson Type III Ethernet Interface Adapter

DIP Normal Switch Settings for the Ethernet III Module (front panel)

- DS-1 Off ('On' is used to generate a configuration report)
- DS-2 N/A
- DS-3 N/A
- DS-4 N/A

Jumper Settings (in strip together on circuit board)

- JP-1 baud
- JP-2 baud
- JP-3 DHCP (default: on)
- JP-4 factory use (normally off)

Baud rate settings (set using combination of jumper 1 and jumper 2, above)

- 9600 baud: JP1-Off, JP-2-Off
- 19200 baud: JP1-On, JP-2-Off
- 38400 baud: JP1-Off, JP-2-On

Note: The Ethernet III module only supports 9600, 19200 and 38400 baud rates. The printer and the Ethernet III module must have the same baud rates to communicate.

Get the initial settings of the Printer

Run the printer self test (hold down the feed button while turning on the printer). The printer will print a list of initial settings including interface type and buffer capacity. Verify that the interface is "serial" for this type of Ethernet adapter and that the baud rate is the same as is set on the card. If necessary, change the baud rate on the printer (using the DIP switches) or the baud rate on the module (using jumpers), so they agree.

Get the initial settings of the Ethernet Adapter Card

Turn off power on printer. Change the dip switch 1 to ON. Turn printer on. The printer will print a list of including MAC address, current IP address and DIP switch and jumper settings.

Note: if you want to enable DHCP for this card, you must place a jumper on JP3. JP3 is located on the circuit board near the large black connector. DHCP stands for Dynamic Host Configuration Protocol, a network service that automatically assigns IP addresses to devices.

Installation Steps (Type II or Type III)

1. Disconnect power and other cables from the EPSON printer, and remove the printer DIP switch cover plate.
2. Remove the existing interface board from the printer by unscrewing 2 screws.
3. Properly align and push the new module into the printer. Fasten the two mounting screws through the faceplate of the new interface.

Printer



TM-U220
\$129

TM-U295
\$184

TM-U375
\$199

TM-U675
\$199

TM-H600III
\$349

TM-T88II
\$109

4. Set DIP switches as necessary; then attach the access cover.
5. Connect the power cable to the printer and apply power. Attach network cable.
6. Run a configuration report. This shows that the printer, module, and firmware are all installed and operating correctly and shows how the communication parameters are set.

TM-T88III
\$139

Running a Configuration Report (Type II or Type III)

TM-T88IV
\$199

To Run the Config Report

1. Power on the printer,
2. Open the paper cover,
3. press the FEED button,
4. Close the paper cover.

TM-T88V
\$259
New

TM-U200
\$99

The configuration report will now print. It should include information such as the MAC address, the IP address and the gateway address. After printing, don't forget to return DIP switch 1 to the off position.

For the EPSON TM-U200 printer:

Set DIP switch 1 on the Ethernet Module to ON and power up the unit. After report has printed, power off unit and return DIP switch to the OFF position.

Configuring the Interface (Type II or Type III)

Each Epson Ethernet Interface module has a 'Base' MAC Address programmed into the it. A unique MAC Address and a Serial Number are programmed into the Flash ROM at the factory, and cannot be changed. Labels with both the MAC address and serial number are affixed to the module. These numbers are important when configuring the adapter- It is advisable to make a note of these values in a secure place.

The Internet or IP address can be set using the web interface or Epson EEI utility. It can be dynamically reassigned via DHCP, BOOTP, or ARP/Ping.

High Level Configuration

Option 1 (Ethernet II only): Using a web browser, type the default IP address (found on a label on the interface card) into the address field of your web browser. The configuration screen should appear. The default password for the interface is Epson. We highly recommend this be changed. Once the web interface is running, all application, network, printer and password settings can be modified.

Option 2 (Ethernet II or Ethernet III): Use the Epson Ethernet Interface Configuration Program for this series of adapter, EEIUtil.exe. The program will discover all Epson Ethernet printers on your network and allow you to reconfigure them. Note: the TMNetWinConfig is not compatible with this model of adapter.

Important: If you are assigning a permanent IP address to the Epson printer, it is advised that dip switch 8 on the interface module be switched to off once the address has been set.

Configuring the Computer (all types)

Installing the Device Drivers for Windows

If provided with a driver disk from Beagle Hardware or Epson, you can install the Epson printer drivers from the CD. Alternatively, you can download the files from Epson.

To obtain the latest Device Drivers from Epson:

1. Download and Install Epson's drivers available from www.epsonexpert.com
2. You WILL be REQUIRED to log in to access these drivers.
3. If you do not have a log in, you will be required to register for this service (this is free and takes less than 10 minutes). This is a process controlled by Epson not Beagle Hardware.
4. Click on TECHNICAL RESOURCES
5. Select the printer model under the menu

6. Click the download drivers on the printer page

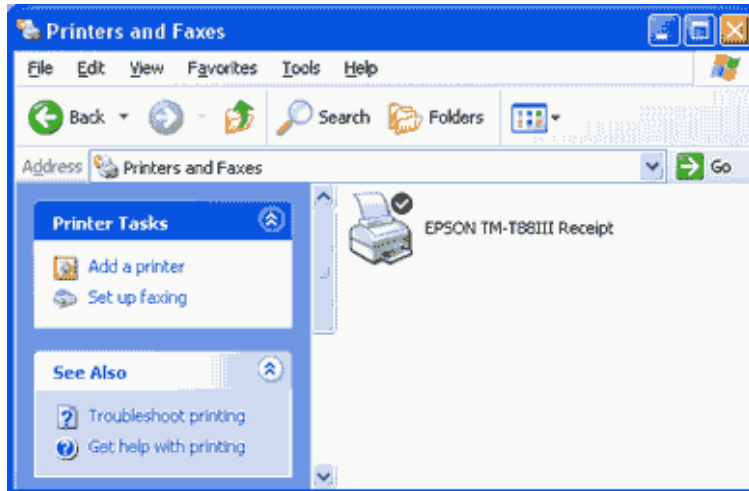
Configuration Utilities to Run on the Computer

Epson Flash Utility

The Epson Flash Utility is normally installed with the Epson printer drives. It is used to upload bitmaps to Epson printers, but has a simple communication test which will check for basic connectivity between the computer and the printer. Pressing the "Comm. Test" button on the Setup tab of the utility will give a go/no-go indication of basic connectivity.

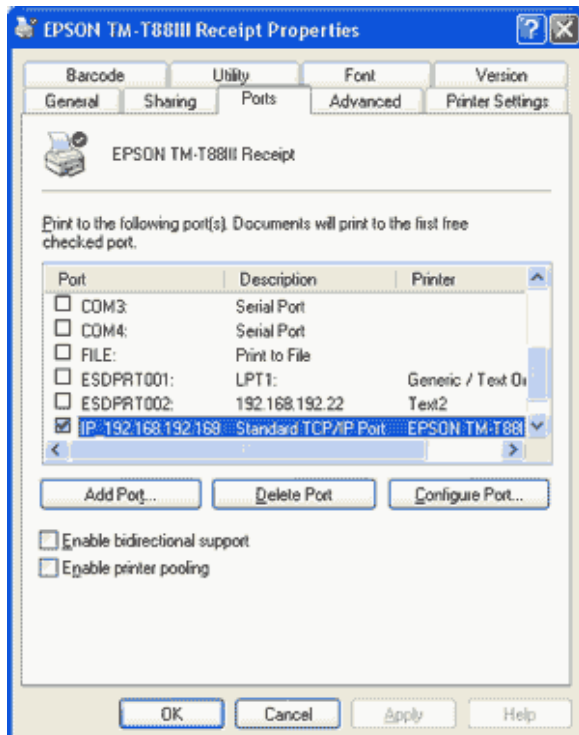
Installing the Printer Driver in Windows

Installing the TMNet utility also installs the printer driver in Windows. The printer should be visible in the printers folder of the Windows Control Panel.

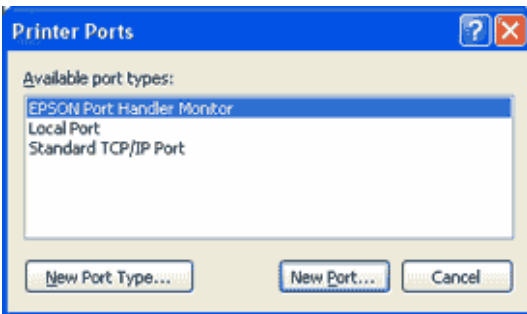


Configuring the Printer in Windows

You need to make a few changes in the printer settings to get it to work with the Ethernet adapter. Specifically you need to configure the port you are using. Open the printer in the Windows Printer Folder. Select the Ports Tab. Turn off *bidirectional support*, if enabled.

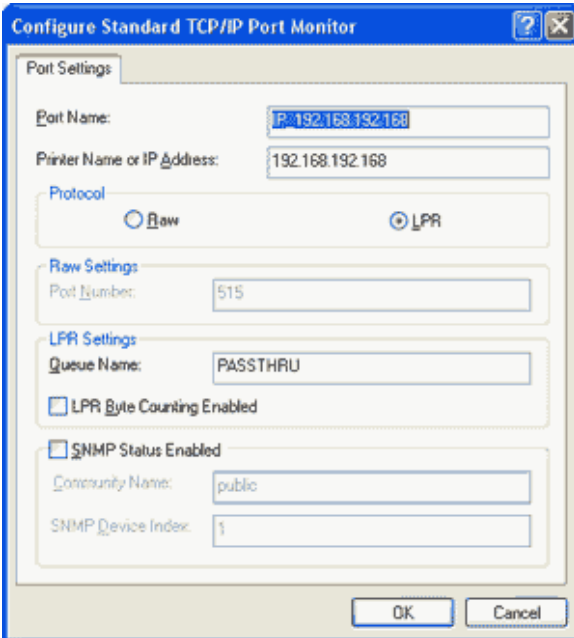


You must now add the port as a TCP/IP port. Press "Add Port" and select "Standard TCP/IP Port", then select "New Port".

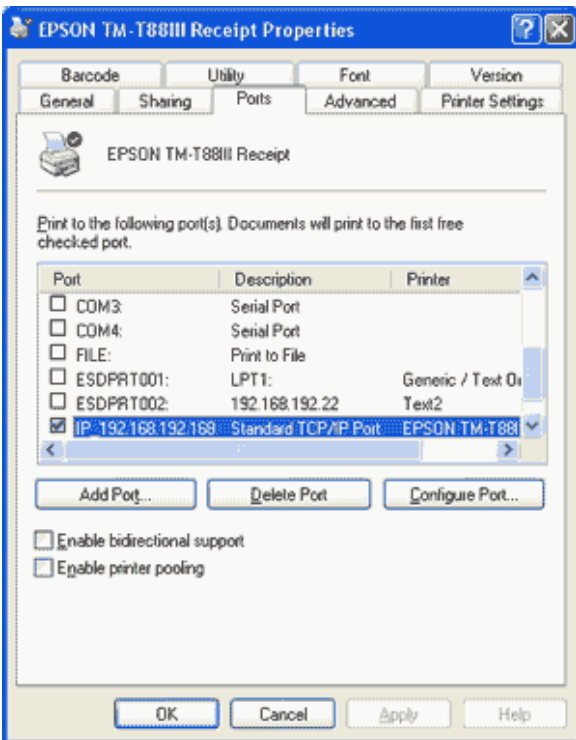


This will open up the Add Standard TCP/IP Printer Port Wizard.

Enter the IP address of the Ethernet adapter (192.168.2.29 shown here). The utility will then locate the printer on the Ethernet network and create the port. This port (IP_...) will now be selected for use with this printer.

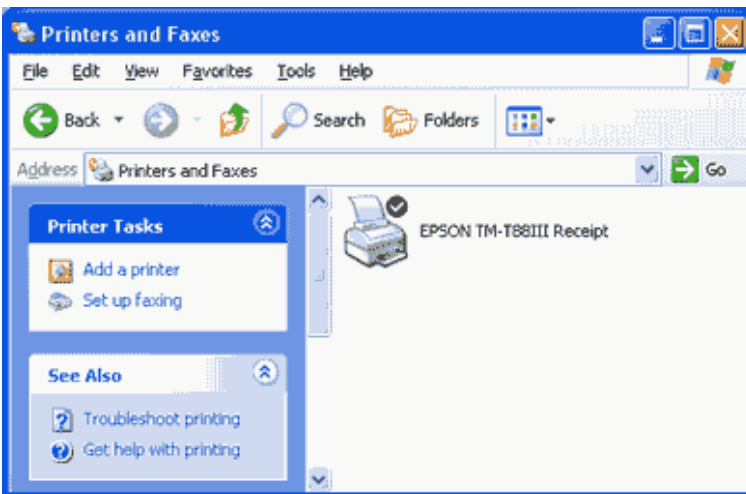


You may need to make a few changes in the printer settings to get it to work with the Ethernet adapter. Specifically you need to configure the port you are using. Open the printer in the Windows Printer Folder. Select the Ports Tab. Select the Ethernet port in use (i.e. IP_). Also turn off **bidirectional support**, if enabled.



Accessing the Printer Driver in Windows

After installing the printer drivers, the printer should be visible in the printers folder of the Windows Control Panel. Right clicking on the icon should let you open the printer properties.



Testing the Printer

You should now be ready to test the printer by printing some text or by pressing the "Print Test Page" button in the General Tab of the printer properties.

Troubleshooting

Connectivity Problems

- The Ethernet adapter has not been configured to work on your local network. Confirm network settings using the adapter self test.
- The computer is unable to connect to the printer over the network. Test connectivity with ping and/or TMNet.

- The IP address of the adapter has changed. Check IP settings.
- The printer is not online in Windows. Check the status of the printer in the Windows Control Panel, the printer should show status as ready. *Tip:* try stopping and restarting the Print Spooler from the Services applet of the Control Panel.
- IP address setting is not correct. Confirm that the IP address assigned by the network is set for the Ethernet adapter.
- Subnet mask setting is not correct. Confirm that the subnet mask assigned by the network is set for the Ethernet adapter.
- The IP address is set redundantly. When the same IP address is used for more than one device in the network, communication is not possible. Confirm the settings for the other devices. The same default IP address is set for all Ethernet adapter units as the factory setting. Do not use more than one printer with the Ethernet adapter on the same network without changing the IP address.
- The Epson printer driver has not been installed for the Ethernet adapter and printer in use.

No longer prints

- The TM printer is turned off. Turn on the TM printer. Confirm the connection of the power supply unit or the voltage of the commercial power.
- The TM printer is offline. Turn the TM printer online.
- The ERROR LED of the TM printer is on or flashing. Remove the error cause.
- The printing port of the driver on the computer side is not specified correctly. Confirm the driver setting on the computer side.
- The IP address of the printer has changed. Compare IP settings at the printer side and computer side.

Printing is slow

- There are problems with the computer or network. Printing speed may go down due to problems with the network system or applications.

More Information

[Epson Printers](#)

[Epson Interfaces](#)

[Support Information](#)

Need some help? Try our Epson printer test utility

[Home](#) | [Printers](#) | [Accessories](#) | [Service](#) | [Support](#) | [About Us](#) | [Contact](#)



E-Mail: info@beaglehardware.com

Call: 800-253-6407

Copyright© 2011 Beagle Hardware



BBB
Rating: A+

[Click for
Review](#)