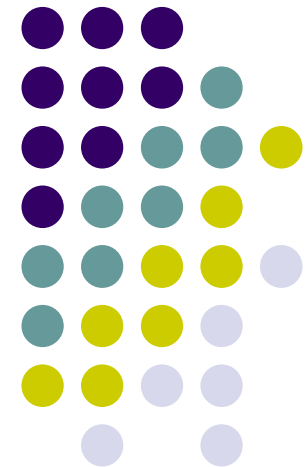


# How to connect NUVICO DVR to the internet

## Section 1. Initial preparations

Preparations  
Finding Network Information



# Preparations



- Is the Internet service up and running at the Job site ( )
- Name of the internet service provider ( )
- How many computers? ( )
- What is the Model Number of the Router? ( )

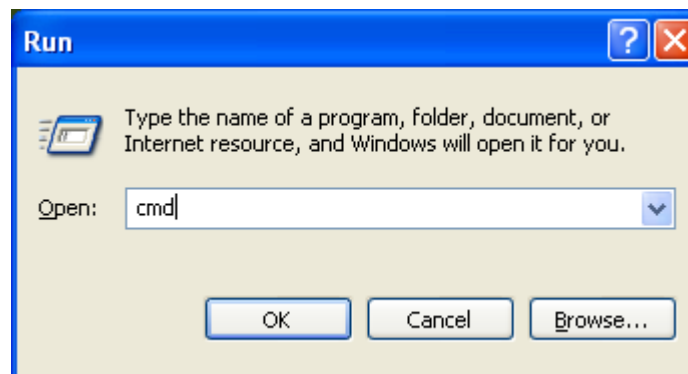


# Finding Network Information

1. Click Start



2. Click Run → Type 'cmd' → Click OK





# Finding Network Information

3. Type 'ipconfig' → Press Enter

```
C:\WINDOWS\system32\cmd.exe
Microsoft Windows XP [Version 5.1.26001
(C) Copyright 1985-2001 Microsoft Corp.

C:\Documents and Settings\Administrator>ipconfig

Windows IP Configuration

Ethernet adapter Local Area Connection 2:

    Media State . . . . . : Media disconnected

Ethernet adapter Local Area Connection:

    Connection-specific DNS Suffix  . :
    IP Address . . . . . : 192.168.1.100
    Subnet Mask . . . . . : 255.255.255.0
    Default Gateway . . . . . : 192.168.1.1

C:\Documents and Settings\Administrator>_
```

4. Note the following items as 'Computer 1':
  - IP ADDRESS: 192.168.1.100
  - SUBNET MASK: 255.255.255.0
  - DEFAULT GATEWAY: 192.168.1.1

# Finding Network Information

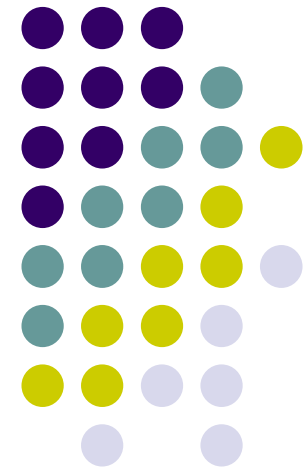


5. Add 5 to the fourth value of the IP ADDRESS section and note it as '**DVR1**':
  - IP ADDRESS: 192.168.1.**105**
  - SUBNET MASK: 255.255.255.0
  - DEFAULT GATEWAY: 192.168.1.1

# How to connect NUVICO DVR to the internet

## Section 2. DVR configuration

Assigning an IP address to a DVR  
Testing Local Configuration



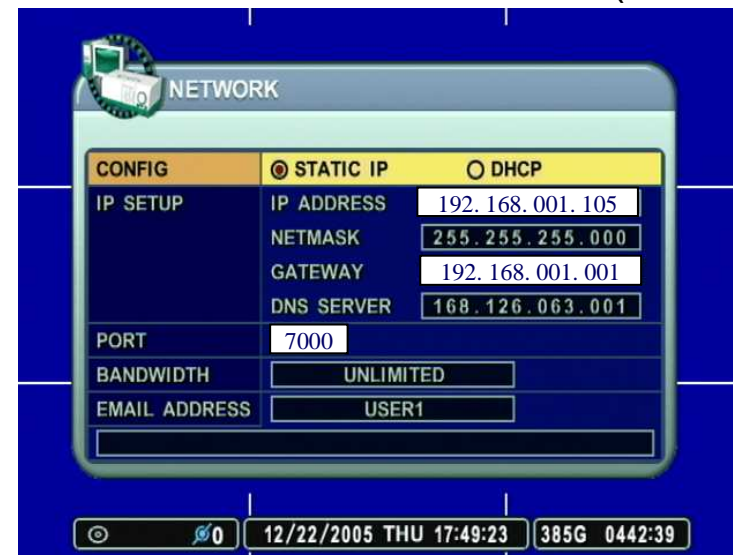
# Assigning an IP address for a DVR



1. Press Menu → go to Network



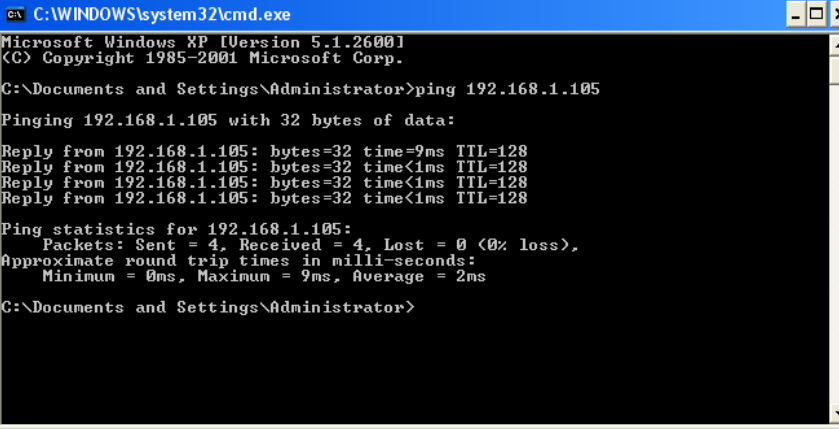
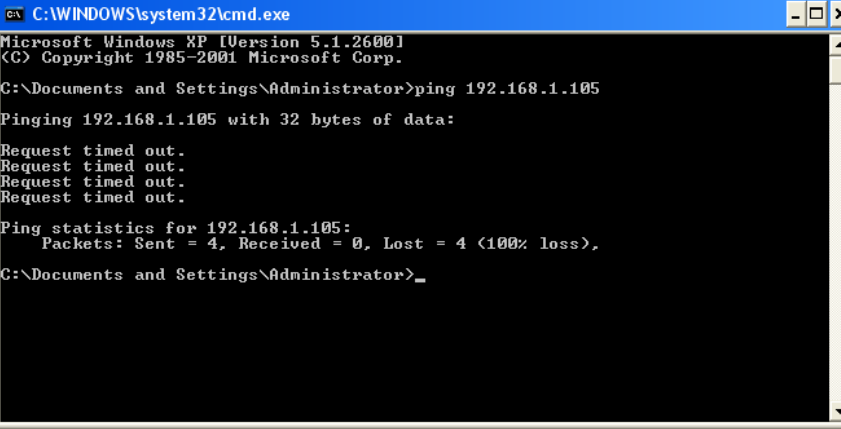
2. Fill out the IP information based on the note from section 1(DVR1)





# Testing Local Configuration

1. Go back to the Windows command prompt (section 1)  
→ type 'ping 192.168.1.105' → Press Enter

Connection successful (go to next step)	Connection Fail (go back to section 1)
 <pre>C:\WINDOWS\system32\cmd.exe Microsoft Windows XP [Version 5.1.2600] (C) Copyright 1985-2001 Microsoft Corp.  C:\Documents and Settings\Administrator&gt;ping 192.168.1.105  Pinging 192.168.1.105 with 32 bytes of data:  Reply from 192.168.1.105: bytes=32 time=9ms TTL=128 Reply from 192.168.1.105: bytes=32 time&lt;1ms TTL=128 Reply from 192.168.1.105: bytes=32 time&lt;1ms TTL=128 Reply from 192.168.1.105: bytes=32 time&lt;1ms TTL=128  Ping statistics for 192.168.1.105:     Packets: Sent = 4, Received = 4, Lost = 0 (0% loss),     Approximate round trip times in milli-seconds:         Minimum = 0ms, Maximum = 9ms, Average = 2ms  C:\Documents and Settings\Administrator&gt;</pre>	 <pre>C:\WINDOWS\system32\cmd.exe Microsoft Windows XP [Version 5.1.2600] (C) Copyright 1985-2001 Microsoft Corp.  C:\Documents and Settings\Administrator&gt;ping 192.168.1.105  Pinging 192.168.1.105 with 32 bytes of data:  Request timed out. Request timed out. Request timed out. Request timed out.  Ping statistics for 192.168.1.105:     Packets: Sent = 4, Received = 0, Lost = 4 (100% loss),  C:\Documents and Settings\Administrator&gt;</pre>



# Testing Local Configuration



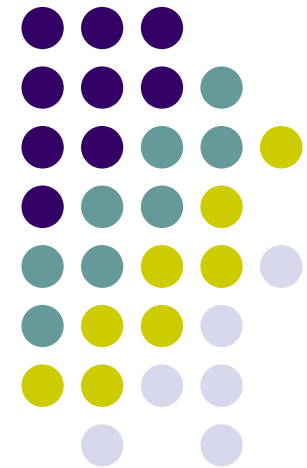
2. Open up Internet Explorer → type '**http://192.168.1.105:7000**'
3. **ID: pdvr, Pass: 000000** → click '**WebViewer**'



# How to connect NUVICO DVR to the internet

## Section 3. Router Configuration

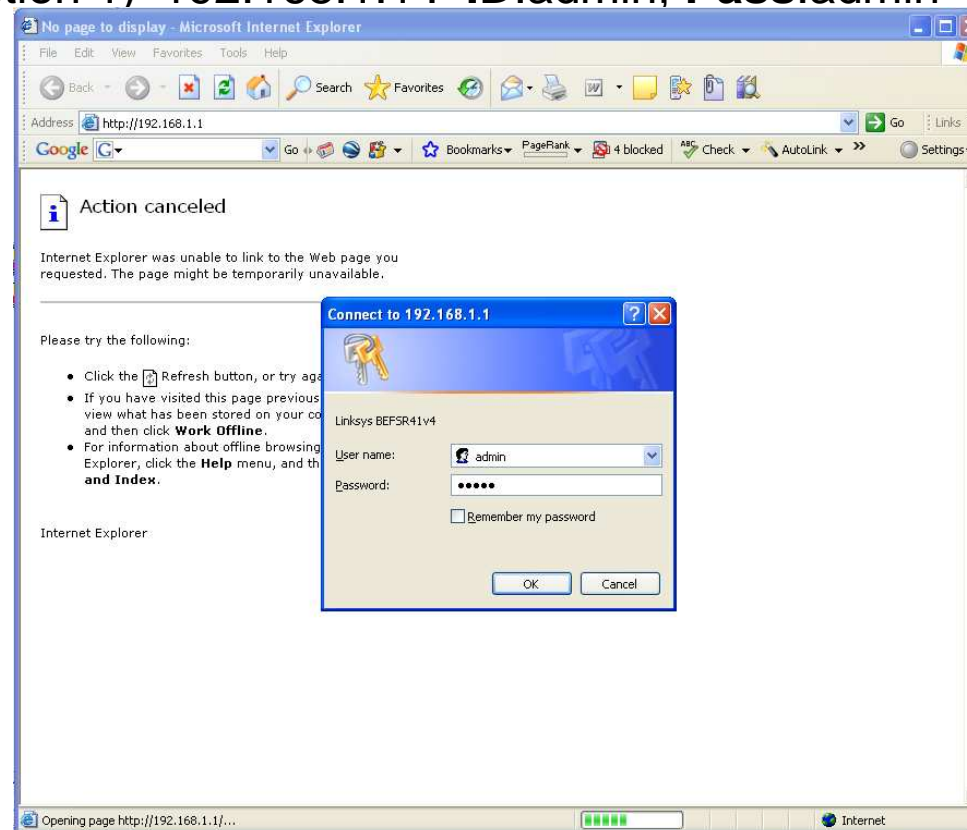
Configuring Linksys BEFSR41 V4 Router  
Extra Router Configurations  
Finding Port Forwarding Tips



# Configuring Linksys BEFSR41 V4 Router



1. Open Internet Explorer → type 'Default Gateway IP address'(shown above Section 1) '192.168.1.1'. **ID:admin, Pass:admin**



# Configuring Linksys BEFSR41 V4 Router



2. Click 'Applications & Gaming' → fill out the information as below based on the note from section 1

LINKSYS  
A Division of Cisco Systems, Inc. Firmware Version: 1.04.02

Etherfast® Cable/DSL Router BEFSR41v4

Applications & Gaming

Port Range Forwarding

Application	Start	End	Protocol	IP Address	Enabled
divx	7000	7000	Both	192.168.1.105	<input checked="" type="checkbox"/>
	0	0	Both	192.168.1.0	<input type="checkbox"/>
	0	0	Both	192.168.1.0	<input type="checkbox"/>
	0	0	Both	192.168.1.0	<input type="checkbox"/>
	0	0	Both	192.168.1.0	<input type="checkbox"/>
	0	0	Both	192.168.1.0	<input type="checkbox"/>
	0	0	Both	192.168.1.0	<input type="checkbox"/>
	0	0	Both	192.168.1.0	<input type="checkbox"/>
	0	0	Both	192.168.1.0	<input type="checkbox"/>
	0	0	Both	192.168.1.0	<input type="checkbox"/>

Port Range Forwarding can be used to set up public services on your network. When users from the Internet make certain requests on your network, the Router can forward those requests to computers equipped to handle the requests. If, for example, you set the port number 80 (HTTP) to be forwarded to IP Address: 192.168.1.2, then all HTTP requests from outside users will be forwarded to 192.168.1.2. **It is recommended that the computer use static IP address.**

You may use this function to establish a web server or FTP server via an IP Gateway. Be sure that you enter a valid.

More...

# Configuring Linksys BEFSR41 V4 Router



2. Click 'Save Settings'
3. Most of the time you should be able to login to your DVR from remote location. However, let's take the steps below to make sure that your DVR is always on-line.



# Extra Router Configurations

4. Click 'Security' → Click 'Disabled' for 'Block Anonymous Internet Requests' → Click 'Save Settings'

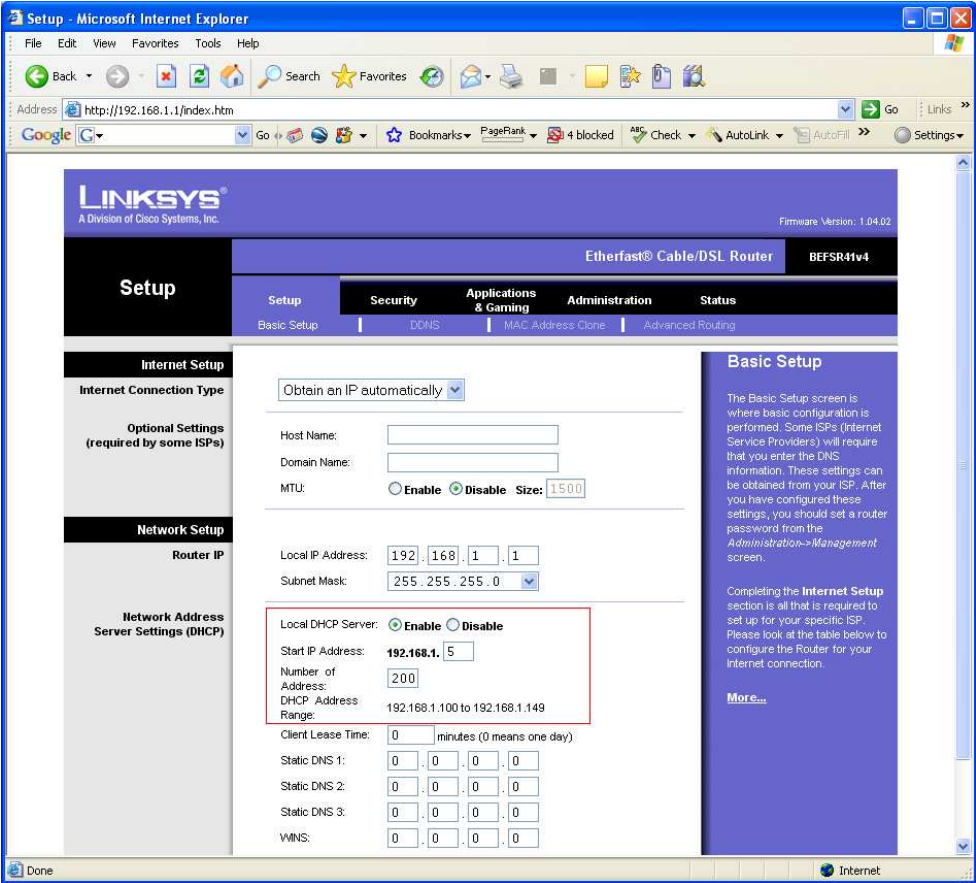
The screenshot shows the Linksys router's Security configuration page. The browser window is titled 'Security - Microsoft Internet Explorer' and the address bar shows 'http://192.168.1.1/Filter.htm'. The page header includes the Linksys logo and 'Etherfast Cable/DSL Router BEFSR41v4'. The 'Security' tab is selected, and the 'Filter' sub-tab is active. The page contains several sections:

- Filter IP Address Range:** A table with 5 rows, each with 'Start' and 'End' IP address fields.
- Filter Port Range:** A table with 5 rows, each with 'Protocol' (set to 'Both') and 'Start'/'End' port fields.
- Filter MAC Address:** A section with an 'Edit MAC Filter Setting' button.
- Block WAN Requests:** A section with a checkbox for 'Block Anonymous Internet Requests' set to 'Disabled' (highlighted with a red box).
- Filter Multicast:** A section with a checkbox set to 'Disabled'.
- Filters:** A sidebar with instructions on how to use the filters.

# Extra Router Configurations



5. Go to Setup → Change the following tab as follows:



Local DHCP Server:  Enable  Disable

Start IP Address: 192.168.1. 5

Number of Address: 200

DHCP Address Range: 192.168.1.100 to 192.168.1.149

Click 'Save Settings'

# Finding Port Forwarding Tips



6. You could find useful Port forwarding tips per different manufactures and model numbers from the following web sites.
  - [www.portforward.com](http://www.portforward.com)
    1. Click on “Forwarding”
    2. Locate and click on the specific manufacturer and model number of the router.
    3. Click on ‘Default Guide’
  - [www.linksys.com](http://www.linksys.com) : Linksys router
  - [www.netgear.com](http://www.netgear.com) : NetGear router
  - [www.dlink.com](http://www.dlink.com) : D-Link
  - [www.2wire.com](http://www.2wire.com) : 2Wire router



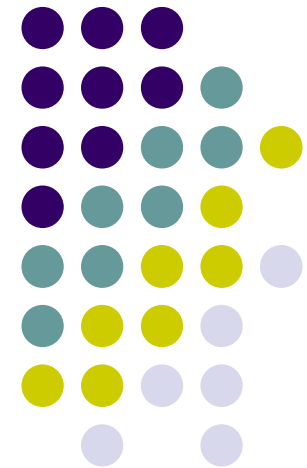
# How to connect NUVICO DVR to the internet

## Section 4. DVR Client Software

Finding NUVICO DDNS Hostname

Viewing with Internet Explorer

Viewing with the CMS(DVR player) installable program



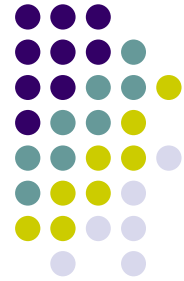
# Finding NUVICO DDNS Hostname



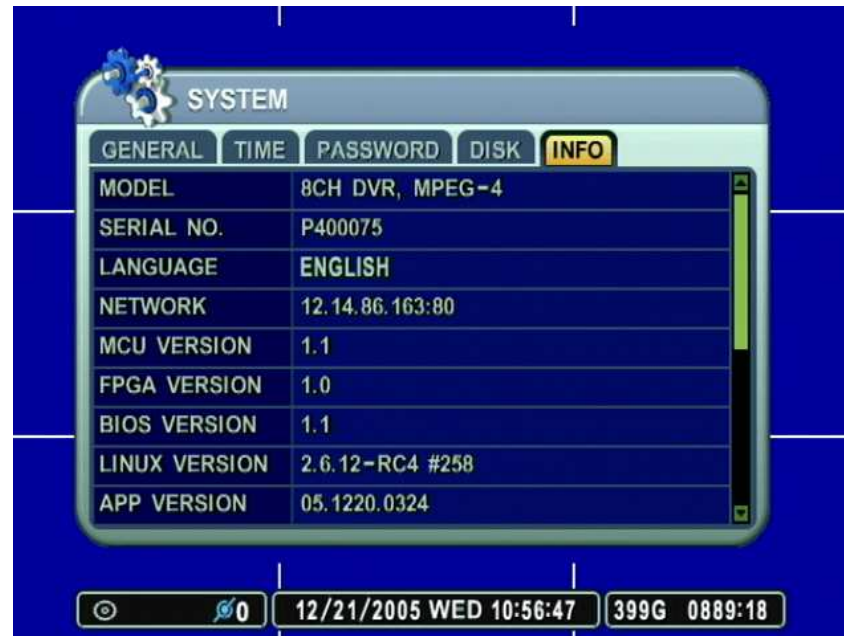
1. Press Menu on the DVR → System



# Finding NUVICO DDNS Hostname



2. Go to 'INFO' tab. Note the 'SERIAL NO' : Ex) **P400075**



3. Your serial number will be used as the hostname for the DVR as follows: **Host Name: P400075.DVRHOST.COM**



# Viewing with Internet Explorer

3. Open up Internet Explorer and type '**http://p400075.dvrhost.com:7000**' to access your DVR from the internet.
4. Type in the following information: **ID: pdvr, Pass: 000000 (Password for the DVR)** → click OK

Enter Network Password

This secure Web Site (at 12.14.87.54) requires you to log on.  
Please type the User Name and Password that you use for Control.

User Name: Pdvr

Password: \*\*\*\*\*

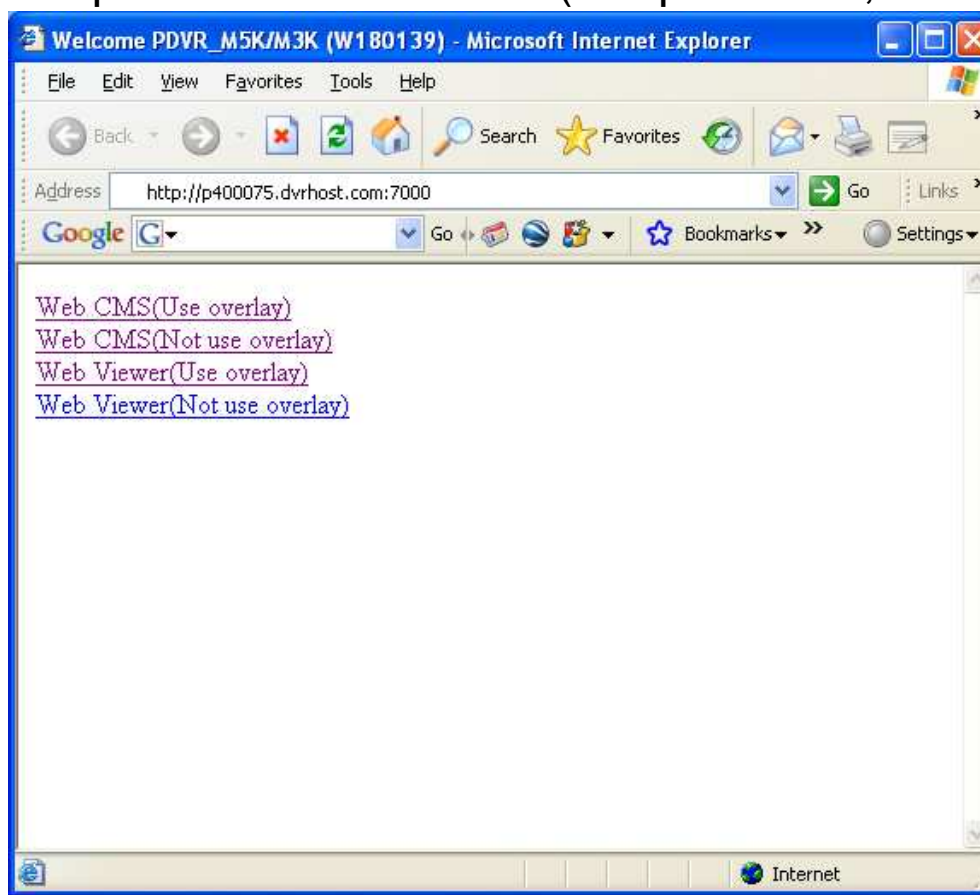
Save this password in your password list

OK Cancel



# Viewing with Internet Explorer

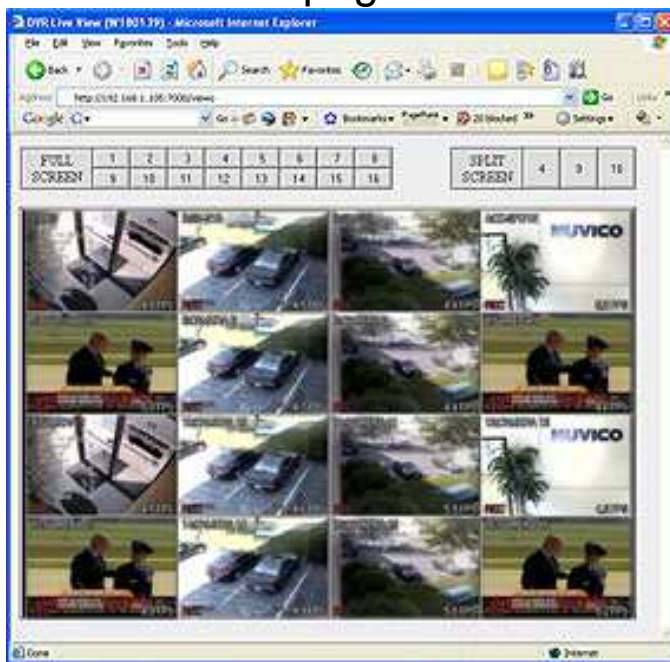
5. Choose one of the options from the menu (for quick view, select **'Web Viewer'**)



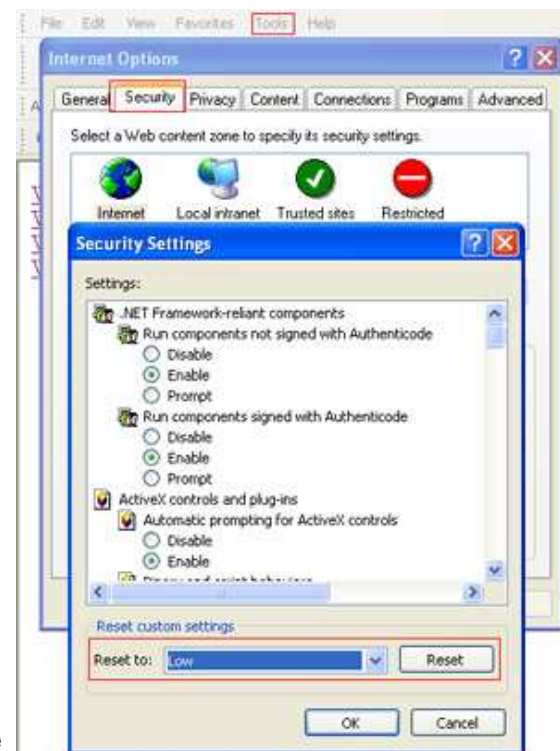


# Viewing with Internet Explorer

6. If your security setup does not allow you to view the cameras through the **Web Viewer**, follow the steps below:
  - a. On Internet Explorer → Tools → Internet Options → Security → Custom Level → Reset to: Low → Press 'Reset' button → Click 'YES'
  - b. Refresh the page.



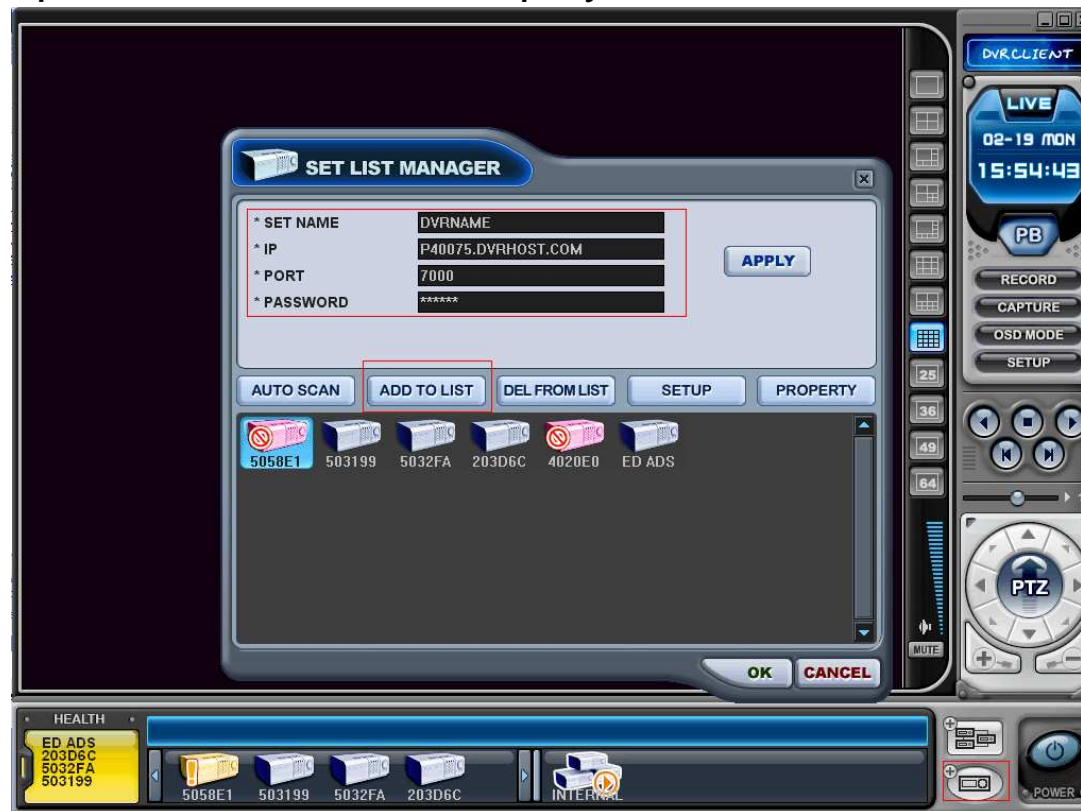
NUVICO Connecting Video Anywhere



# Viewing with the CMS(DVR player) installable program




7. Open up the CMS program by double clicking the 'DVR player' icon. Default password for the DVR player is '0'.



# Viewing with the CMS(DVR player) installable program



8. Click on 'add DVR' icon , and input the following items:
  - **SET NAME:** Any name you want
  - **IP:** IP address of the DVR or the Hostname:
    - **Local:** 192.168.1.105
    - **Hostname:** P400075.DVRHOST.COM
  - **Port:** 7000
  - **PASSWORD:** password of the DVR
9. Click 'ADD TO LIST' → OK
10. Right mouse click on the DVR that you just added and click on 'LIVE'



# Viewing with the CMS(DVR player) installable program

