

How to Research Your FLW Building

Avery Library and the Frank Lloyd Wright Foundation Archives

Hannah Bennett, Director of Avery Library

Jenny Davis, Public Services Librarian

Pamela Casey, Archivist

Shelley Hayreh, Archivist

Monday, April 5, 2021

Overview

Introduction by Hannah Bennett, Director of Avery Library

Avery Library history and background by Jenny Davis, Public Services Librarian for Avery Library

Drawings & Archives overview, history of the Frank Lloyd Wright Foundation Archives, and how to research your Wright building using the Frank Lloyd Wright Foundation Archives by Pamela Casey and Shelley Hayreh, Archivists at Avery Drawings & Archives

Established in 1890

— — —
Avery Library was established in 1890, and named for Henry Ogden Avery, a young New York architect and friend of Robert Ware, the founder of the Department of Architecture at Columbia.

After Henry Ogden Avery's premature death, his parents Samuel Putnam Avery and Mary Ogden Avery established the library as a memorial to their son. They offered his personal collection of 2,000 books, original drawings, and an endowment to ensure the future growth of the collection.

In 1912, Avery moved into its present McKim, Mead & White building, Avery Hall, which also houses the Graduate School of Architecture, Planning, and Preservation.



Avery Library today

Our research collection consists of over 650,000 volumes and 1,300 periodicals, and covers a wide range of subject areas related to the built environment and fine arts: archaeology, architecture, art history, city planning, decorative arts, design, historic preservation, landscape architecture, painting, photography, real estate development, and sculpture.

These materials cover all time periods, languages, and geographic areas.



How do we build our research collections?

- Avery Librarians collaborate with librarians in Global Studies to collect across all geographic areas and languages.
- Our holdings support the curricula of the Graduate School of Architecture, Planning, and Preservation and the Department of Art History and Archaeology.
- Recommendations from our users also help to shape our collections.
- We actively work to collect new formats, such as web archives.



Avery Index to Architectural Periodicals

A comprehensive listing of journal articles on architecture and design, including the history and practice of architecture, landscape architecture, city planning, historic preservation, and interior design and decoration. The Avery Index is an essential tool for many researchers in these areas.

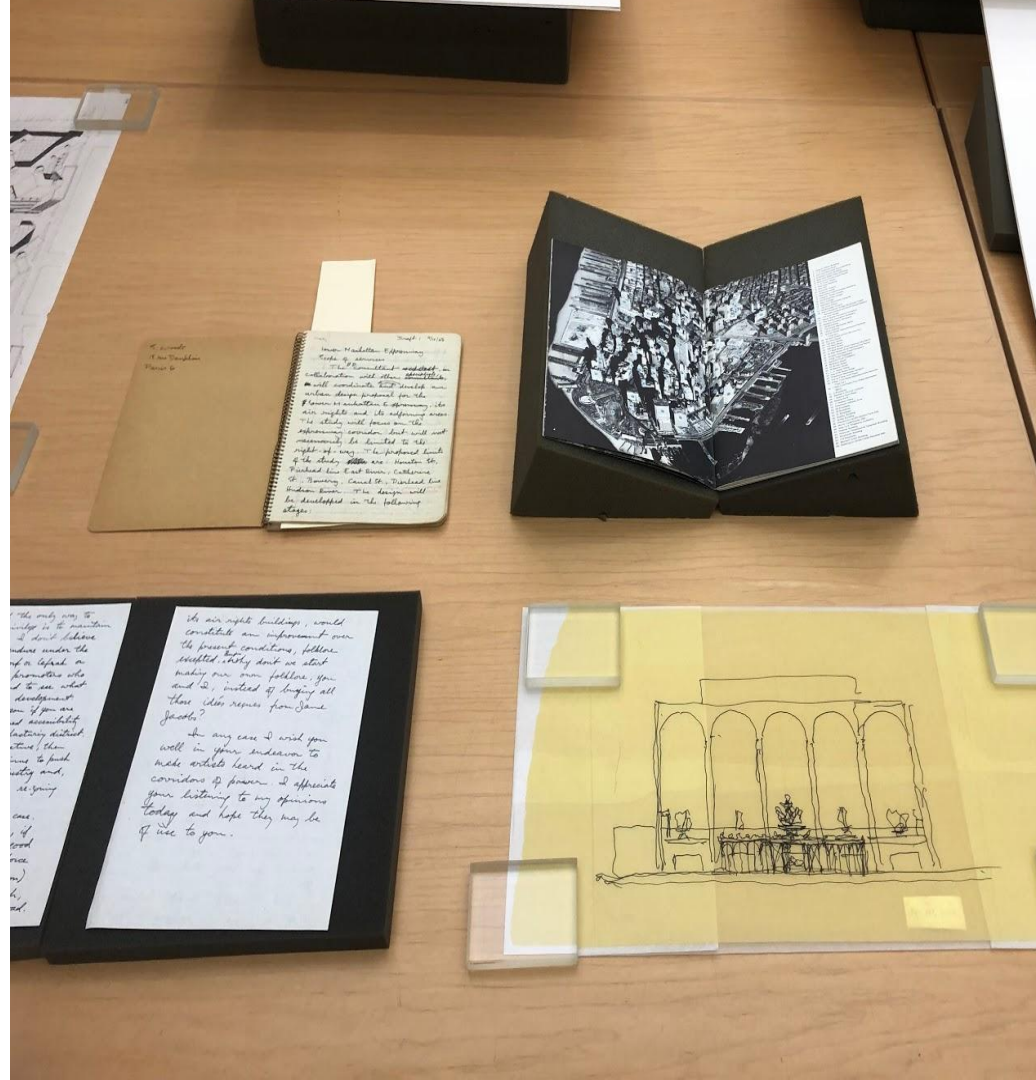
The index began in 1934 as a card file, was published in print for the first time in 1963, and is now searchable through online database platforms.



Avery special collections: Drawings & Archives

Archival special collections of drawings, photographs, and architectural records documenting architecture and design practices.

900+ collections focus largely on American and New York City architecture of the 19th and 20th centuries.



Avery special collections: Avery Classics

Avery Classics is one of the largest architectural rare book collections in the world.

About 40,000 printed volumes published over seven centuries, important holdings of graphic suites, periodicals, manuscripts, broadsides, photographs, and printed ephemera.



Avery special collections: Art Properties

The Art Properties collection comprises more than 13,000 works of art in all media, reflects nearly all cultures and time periods. Researchers may make appointments to view and study most works from the collection with advance notice. Art work is displayed in selective locations on each campus and storage.



An aerial, painterly illustration of a prairie town. The town is built on a hillside overlooking a wide river. The architecture is characterized by flat roofs and simple, rectangular forms. The surrounding landscape includes rolling hills and sparse vegetation. The overall style is reminiscent of early 20th-century architectural or regionalist art.

Frank Lloyd Wright Foundation Archives at Avery Drawings & Archives

Who we are and what we do

History of the Frank Lloyd Wright Foundation Archives

Collections in the Frank Lloyd Wright Foundation Archives

Resources for homeowners:

Online collection page, finding aids, ArtStor

Current services (pandemic restrictions)

Drawings & Archives at Avery Architectural and Fine Arts Library, Columbia University

The Department of [Drawings & Archives](#) is an architectural archive within Avery Library that documents architecture and design practices.

Collection strengths are **19th and 20th century New York City and American Architecture.**

Collection highlights include: Louis Sullivan, Guastavino Company, Ely Jacques Kahn, Alexander Jackson Davis, Hugh Ferriss, Philip Johnson, Gordon Bunshaft, Max Bond, Felix Candela, and Harrison & Abramovitz.

In 2012, Drawings & Archives acquired **The Frank Lloyd Wright Foundation Archives** in partnership with the Museum of Modern Art.





Drawings & Archives Public Services

Our goal is to **connect users to our collections**, and guide them to what is available for research

We support a **diverse research community** that includes: students, scholars, architects, historic preservationists, exhibition curators, and homeowners

Typical services include: on-site research appointments for the public, classes and instruction sessions, imaging services, and exhibition loans

History of the Frank Lloyd Wright Foundation Archives

1893: Wright opens his practice in Chicago

1897 to 1925: Wright moves four times and suffers two catastrophic fires

1940: Wright establishes the Frank Lloyd Wright Foundation, repository of drawings created

1959: Wright dies, and his manuscripts and correspondence are added to the archive



FLWF Archives Post-Custodial History

1985: Olgivanna Lloyd Wright dies;
vaults are built at Taliesin West
and systematic cataloging begins

1988: *Index to the Taliesin
Correspondence* is published

1992/3: *Frank Lloyd Wright Collected
Writings and Frank Lloyd Wright: the
master works* is published

2012: Avery Library and the Museum
of Modern Art acquire the Frank
Lloyd Wright Foundation Archives

2013: Avery Drawings & Archives
opens the archive to the public



Collections in the Frank Lloyd Wright Foundation Archives

Core Collections(pre-1959):

- ❖ Architectural drawings
- ❖ Books and publications
- ❖ Correspondence
- ❖ Exhibition files
- ❖ Fellowship Talk recordings
- ❖ Fellowship Talk transcripts
- ❖ Films
- ❖ Manuscripts
- ❖ Personal and Taliesin Fellowship photographs
- ❖ Project photographs
- ❖ Specifications
- ❖ Family papers and ephemera

FRANK LLOYD WRIGHT AT AVERY



Frank Lloyd Wright (1867-1959) has been recognized by the American Institute of Architects as "the greatest American architect of all time" and throughout its distinguished history, Avery Library has comprehensively collected materials by and about Frank Lloyd Wright. From his first published work, to his drawings and papers, to comprehensive coverage of the critical literature devoted to Wright and his legacy, Avery's library and archival collections offer an unparalleled resource for investigating Wright and his prolific body of works. In 2012, Avery's existing holdings of Wright related archives was monumentally expanded by the co-acquisition with The Museum of Modern Art of the Frank Lloyd Wright Foundation Archives. Collocated here are guides to Avery's Wright holdings, together with guides to our research support services. [MORE >>](#)

Our work on the Wright collections is ongoing. Parts of the Frank Lloyd Wright Foundation Archives are currently open for research while others are in active states of processing. Similarly, items from the collections are being imaged to support research, publication and exhibition projects. We are in the early stages of planning large-scale digitization of our holdings, and hope to present digitized content online in the coming years. [Contact us](#) to inquire about how you can help support Avery's Wright projects.



[ABOUT](#)



[COLLECTIONS](#)



[CONSULTATION](#)



[SERVICES](#)



[RESEARCH GUIDE](#)

Collections in the Frank Lloyd Wright Foundation Archives

— — —

Collections of Secondary
Creators:

- ❖ Olgivanna Lloyd Wright papers
- ❖ Olgivanna Lloyd Wright recordings
- ❖ Iovanna Lloyd Wright papers
- ❖ Oral Histories
- ❖ Eugene Masselink drawings
- ❖ Wesley Peters papers
- ❖ Taliesin Associated Architects drawings and records
- ❖ George Gurdjieff papers
- ❖ William Marlin research papers
- ❖ Kay Rattenbury collection
- ❖ [and more]



FLW and OLLW at Tea Circle, 1942 (FLW PH 6202.0004)

Avery Drawings & Archives: Resources for homeowners and where to start

1. Frank Lloyd Wright Foundation Archives online **collection page**
2. Online collection **finding aids**
3. Artstor digital collection of black and white **study images** of drawings

Frank Lloyd Wright and Edward Serlin, Usonia houses,
New York, circa 1949-1953. PH 6804.0003

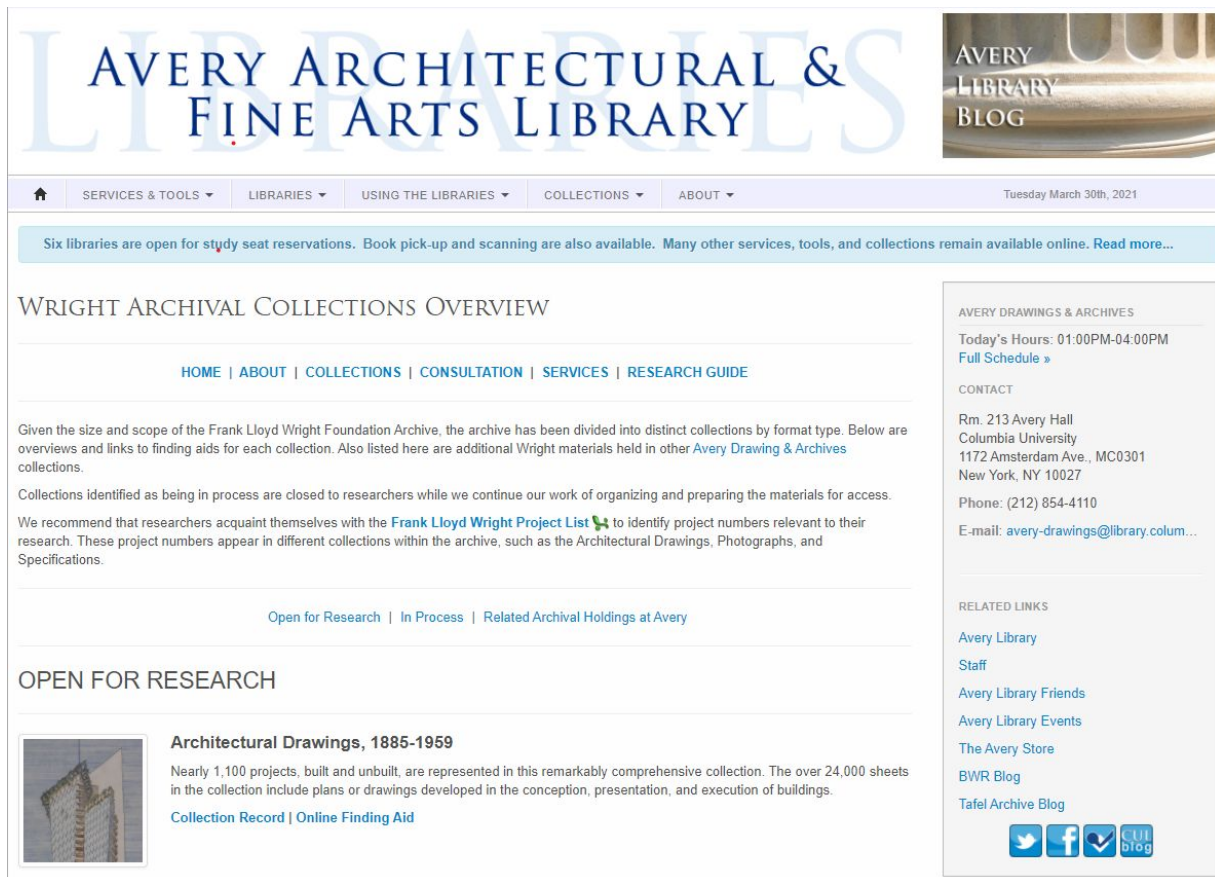


Frank Lloyd Wright Foundation Archives online collection page

Drawings & Archives created a landing page for the Frank Lloyd Wright Foundation Archives identifying **archival collections open for research**, those still closed for processing, and links for related archives

From this collection page, **researchers can read a brief description of what a collection contains**, and **access finding aids** for collections now open for research

<https://library.columbia.edu/libraries/avery/franklloydwright/collections.html>



The screenshot shows the website for the Avery Architectural & Fine Arts Library. The header features the library's name in large blue letters. Below the header is a navigation menu with options: SERVICES & TOOLS, LIBRARIES, USING THE LIBRARIES, COLLECTIONS, and ABOUT. The date Tuesday March 30th, 2021 is displayed in the top right corner. A light blue banner below the navigation menu states: "Six libraries are open for study seat reservations. Book pick-up and scanning are also available. Many other services, tools, and collections remain available online. Read more...". The main content area is titled "WRIGHT ARCHIVAL COLLECTIONS OVERVIEW" and includes a navigation bar with links: HOME | ABOUT | COLLECTIONS | CONSULTATION | SERVICES | RESEARCH GUIDE. The text explains that the archive is divided into distinct collections by format type and provides links to finding aids. It also notes that collections identified as being in process are closed to researchers. A recommendation is made to use the "Frank Lloyd Wright Project List" to identify project numbers relevant to their research. Below the text is a link: "Open for Research | In Process | Related Archival Holdings at Avery". The section is titled "OPEN FOR RESEARCH" and features a sub-section for "Architectural Drawings, 1885-1959". This section includes a small image of a building and text stating: "Nearly 1,100 projects, built and unbuilt, are represented in this remarkably comprehensive collection. The over 24,000 sheets in the collection include plans or drawings developed in the conception, presentation, and execution of buildings." Below this text are links for "Collection Record" and "Online Finding Aid". On the right side of the page, there is a sidebar with the following information: "AVERY DRAWINGS & ARCHIVES", "Today's Hours: 01:00PM-04:00PM", "Full Schedule", "CONTACT", "Rm. 213 Avery Hall", "Columbia University", "1172 Amsterdam Ave., MC0301", "New York, NY 10027", "Phone: (212) 854-4110", "E-mail: avery-drawings@library.colum...", "RELATED LINKS", "Avery Library", "Staff", "Avery Library Friends", "Avery Library Events", "The Avery Store", "BWR Blog", "Tafel Archive Blog", and social media icons for Twitter, Facebook, YouTube, and the CUL blog.

Frank Lloyd Wright Foundation Archives:

Collections of primary interest to homeowners

— — —

Architectural Drawings

Correspondence

Project Photographs

Specifications

Drawings, project photographs, and specifications are organized by project number

Correspondence is organized by correspondent



Architectural Drawings, 1885-1959

Nearly 1,100 projects, built and unbuilt, are represented. The over 24,000 sheets in the collection include preliminary presentation, and execution of buildings.

[Collection Record](#) | [Online Finding Aid](#)



Correspondence, 1885-1965

Over 140,000 documents in this collection of correspondence provide a deep understanding of Wright's personal and professional life. The collection also includes project records, invoices, and receipts. The bulk of the correspondence is from the 1920s and 1930s.

Frank Lloyd Wright: an index to the Taliesin Papers by Anthony Alofsin, is a master index to the Wright Papers. The printed index was published by Garland Publishing in 1997.



Project Photographs, circa 1887-2008

The Project Photographs collection contains over 32,500 photographs of 500 projects by Frank Lloyd Wright, with formal and informal photographs, architectural models, and architectural exhibitions. The collection consists of slides, and transparencies, and contains many duplicates.

[Collection Record](#) | [Online Finding Aid](#)



Specifications, 1890-1960

The collection includes specification documents in this series range from descriptive materials, to guidelines for plumbing, electrical projects and for more modest projects through directly onto design drawings; these are not part of the Architectural Drawings series.

[Collection Record](#) | [Online Finding Aid](#)

https://findingaids.library.columbia.edu/ead/nnc-a/ldpd_12471376

What is a finding aid?

Finding aids are **tools created by archivists that describe the contents of collections**, acting as a guide/inventory for archives

They help researchers **identify if material exists and where it is located** within a collection

Search tip: Click on ‘View All’ and use ‘Ctrl+F’ to keyword search within a finding aid -- for example, search by project number or building name

Frank Lloyd Wright Foundation Archives : architectural drawings, 1885-1959

Table of Contents

- [Summary](#)
- [Arrangement](#)
- [Description](#)
- [Using the Collection](#)
- [About the Finding Aid / Processing Information](#)
- [Subject Headings](#)
- [History / Biographical Note](#)

Container List

- [View All](#)
- [Series I: 1880s](#)
- [Series II: 1890s](#)
- [Series III: 1900s](#)
- [Series IV: 1910s](#)

Summary Information

Abstract

Nearly 1,100 built and unbuilt works by American architect Frank Lloyd Wright are represented in this comprehensive collection. The over 24,000 sheets in the collection include plans or drawings developed in conception, presentation, and execution of buildings.

At a Glance

Bib ID	12471376 View CLIO record
Creator(s)	Wright, Frank Lloyd, 1867-1959 ; Taliesin Fellowship
Title	Frank Lloyd Wright Foundation Archives : architectural drawings, 1885-1959
Physical Description	24,000 drawings (approximate)
Language(s)	English
Access	This collection is available for use by appointment in the Department of Drawings & Archives, Avery Fine Arts Library, Columbia University. For further information and to make an appointment, please email drawings@library.columbia.edu .

Arrangement

Arrangement

The drawings are arranged chronologically by project number and are divided into eight series: Series I: 1890s; Series II: 1900s; Series III: 1900s; Series IV: 1910s; Series V: 1920s; Series VI: 1930s; Series VII: 1940s; Series VIII: 1940s; Series IX: Unidentified work by type

FLWF Archives

Architectural drawings

Organized by **decade**, and then by **project number**

The finding aid shows **how many drawings exist** for each project in the archive at Drawings & Archives

The finding aid also provides **links to a new online collection** of black and white study images of the drawings

Columbia University Libraries

COLUMBIA UNIVERSITY LIBRARIES
ARCHIVAL COLLECTIONS

Avery Drawings & Archives

Archival Collections Portal > Avery Drawings & Archives Collections > Frank Lloyd Wright Foundation Archives : architectural drawings, 1885-1959

Frank Lloyd Wright Foundation Archives : architectural drawings, 1885-1959

Table of Contents		
Summary		
Arrangement		
Description		
Using the Collection		
About the Finding Aid / Processing Information		
Subject Headings		
History / Biographical Note		

Container List		
View All		
Series I: 1880s		
Series II: 1890s		
Series III: 1900s		
Series IV: 1910s		
Series V: 1920s		
Series VI: 1930s		
Series VII: 1940s		
Series VIII: 1950s		
Series IX: Unidentified work by type		

Series II: 1890s		
Project 9004	Henry Cooper house (La Grange, Illinois). Unbuilt Project	1890
	3 drawings	
	View available black-and-white study images	
Project 9201	George Blossom house (Chicago, Illinois).	1892
	13 drawings	
	View available black-and-white study images	
Project 9202	Robert Emmond house (La Grange, Illinois).	1892
	14 drawings	
	View available black-and-white study images	
Project 9205	Warren McArthur house (Chicago, Illinois).	1892
	10 drawings	
	View available black-and-white study images	
Project 9206	Robert Parker house (Oak Park, Illinois).	1892
	13 drawings	
	View available black-and-white study images	
Project 9209	W. Irving Clark house (La Grange, Illinois).	1892
	7 drawings	
	View available black-and-white study images	
Project 9210	Charles E. Roberts house (Oak Park, Illinois). Unbuilt Project	1892
	4 drawings	

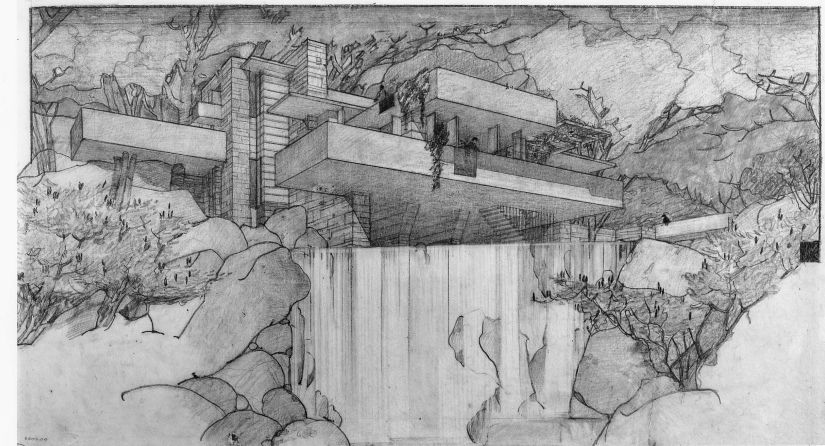
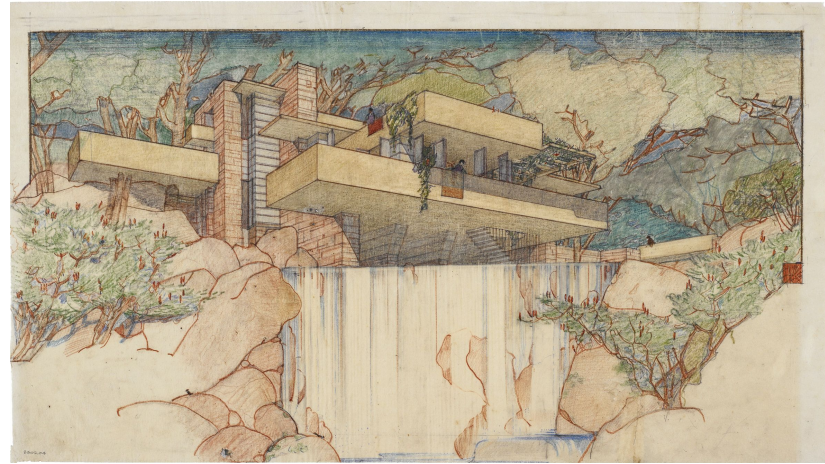
Black and white study images of drawings available online at [Artstor](#)

In the 1990s, the Frank Lloyd Wright Foundation partnered with the Getty Research Center and photographed the architectural drawings collection in black and white

Avery has made this collection of black and white study images available online on the Artstor website

These can be accessed online by searching by project in our [architectural drawings finding aid](#), or directly from the [Artstor collections page](#)

Please note: as the study images are in black and white, they are not exact representations of the drawings, but are an excellent resource for research purposes



Fallingwater, perspective drawing (top) and study image (bottom) #FLW 3602.004

How to research your building using available resources online through Avery Drawings & Archives

— — —
Step 1: Go to our [Frank Lloyd Wright Foundation Archives collection page](https://library.columbia.edu/libraries/avery/franklloydwright/collections.html)

`https://library.columbia.edu/libraries/avery/franklloydwright/collections.html`

Step 2: Find your building's project number by downloading the **Project List spreadsheet** (an Excel document) from the collection page

Step 3: Consult the collection page to see what collections are **open for research**

Step 4: Using your building's project number, consult the online finding aids to see **what material exists** related to your building

**** Collections of primary interest to homeowners include:**

Architectural Drawings, Correspondence, Project Photographs, Specifications

Current public services at Avery Drawings & Archives

— — —
Typical (pre-COVID) services include: on-site research appointments for the public; classes and instruction sessions; imaging services; exhibition loans; research support via email and in person

Current services (pandemic restrictions): on-site research appointments limited to Columbia students and faculty; research support via email. Find updates regarding appointments on the [Drawings & Archives website](#)

Avery's Digital Imaging Services are closed, meaning no new digitization is possible. For updates to these services, or for questions related to imaging requests or the online Artstor collection, reach out to our colleagues in Avery's imaging team: averyimaging@columbia.edu or visit their [website](#)

Recap: How to Research Your FLW Building

To learn what the [Frank Lloyd Wright Foundation Archives](#) hold related to your building: consult the Wright Foundation [archive collections landing page](#); download the **Project List** to know the Wright project number; and consult finding aids to the parts of the archive [open for research](#) to learn what relevant material exists in the archive

To see online black and white study images of drawings related to your building, access these by project number through the [Architectural Drawings finding aid](#) or directly through [Artstor](#)

For updates on changes to appointment policies at the archives, visit the [Drawings & Archives webpage](#) or email us: avery-drawings@columbia.edu

For updates on changes to our digitization services or questions about the Artstor study images, visit the [Avery Digital Imaging webpage](#) or email: averyimaging@columbia.edu



Thank you!

For questions related to the Frank Lloyd Wright Foundation Archives or our finding aids, email Avery Drawings & Archives:
avery-drawings@columbia.edu

For questions related to digital imaging requests and the Artstor project, email Avery Imaging:
averyimaging@columbia.edu

For general questions about Avery Library, email:
avery@library.columbia.edu