

 Aquaforest®

# HOW TO SET UP A MARINE AQUARIUM?

1

## PICK A PLACE FOR YOUR AQUARIUM

Make sure to find a spot with close proximity of sockets (there'll be lots of equipment to plug in!) and no direct sunlight. **Remember, that aquarium filled with water can weight even few hundred kilograms**, so it won't be possible to move it later. Tank inhabitants need some peace too, it's best to set the tank in a quiet place.

2

## DECIDE ON A SIZE!

Remember, that it's always easier to maintain stable parameters in a bigger tank and stability is the key to reefing success! On the other hand, owning a nano tank will let you check if reefing is really your thing.



## 3 CHOOSE THE AQUARIUM TYPE

Fish and coral cast you keep, determinate which products you should use. Reed more about our reef formulas on page: [aquaforest.eu/formula](http://aquaforest.eu/formula)

Of course, at the beginning **AF Starter Pack** will supply you with everything you need.

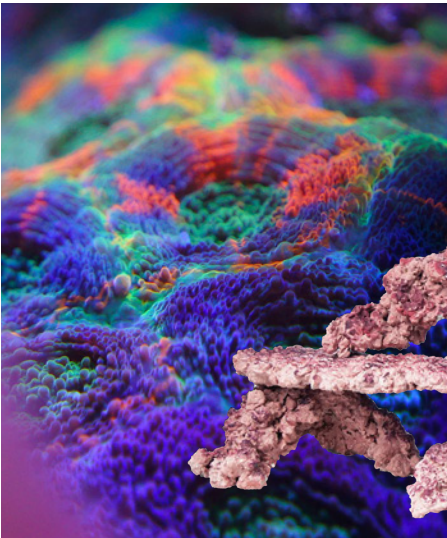


## 4 PICK THE RIGHT EQUIPMENT!

In order to make your aquarium system function properly, you'll need more than aquarium and cabinet. The typical aquarium set consists of:

1. **AQUARIUM, CABINET & SUMP**
2. **PLUMBING ELEMENTS** – pipes & valves to connect your display aquarium with the sump
3. **CIRCULATION PUMPS** – to provide necessary water movement
4. **RETURN PUMP** – to pump water from the sump up to the display tank
5. **HEATER** – to keep the optimal temperature
6. **LIGHT** – to make sure your fish and corals (that photosynthesize!) get enough of light
7. **FILTRATION SOCK/MEDIA REACTOR** – you need to put the filtration media somewhere! Efficient filtration system will help you avoid many latter problems.
8. **SKIMMER** – to get rid of food leftovers and other substances, that for your aquarium's healthy should be regularly removed from the water

## 5 CREATE SOME LIVING SPACE!



When all the necessary gear is collected, it's high time for some creative work... Make sure to use quality rock that will create a good environment for placing your corals and also for bacteria multiplication. Using **AF Rock** you can create your dream looking reef. Apply some **Stone Fix** to bond elements together. When it's solid bonded place the construction in your aquarium. Add **AF Bio Sand** (make sure to follow the usage manual) to complete your aquascape.



## 6 FILL YOUR AQUARIUM WITH SALTWATER

You can use **AF Perfect Water** which is a premixed salt water or prepare it yourself. If you want to do this yourself 24 Celsius degrees (75 F) RODI water and dissolve your salt of choice in it. From the wide range of Aquaforest products, for less demanding aquariums (mixed-reef with smaller amount of fish) we strongly recommend using **Reef Salt** or **AF Perfect Water** which is a ready to use ICP-tested salt mix with steady parameters. For fish-only aquariums we advise **Sea Salt**.

## 7 BOOST THE BIOLOGY

In your media reactor or filtration sock place some **Life Bio Fil**. It's already settled with bacteria, but we also advise boosting tank maturation with **Bio S** – a selection of nitrifying bacteria for aquarium start up.



## 8 TAKE CARE OF FILTRATION

We strongly advise to use **Phosphate Minus** when setting up a new aquarium – it'll absorb phosphate and silicates from water. After 14 days of tank functioning, add **Carbon** to your filter.



## 9 LET IT MATURE

Each tank needs time to mature, meaning that it needs to stabilize its chemistry and biology. Before that you shouldn't put any fish or corals there! Keep on daily dosing Bio S and be patient!

## 10 TEST IT

If water tests shows no ammonia or NO<sub>2</sub> presence we can add our first livestock. The most important thing to do is adding a clean up crew to the aquarium. **Firstly add snails, crabs and shrimps. You should also feed your clean up crew from time to time.**

# 11 KEEP THE NUTRIENTS LOW

It's important to keep NO<sub>3</sub> and PO<sub>4</sub> levels low. In order to do this we advise to use **-NP Pro & Pro Bio S combined**.

# 12 STOCK IT FURTHER

Maturing aquariums very often struggle with diatom blooms. It's completely normal and shouldn't worry you. After the diatoms disappear and the first corals we've put into the aquarium are fine, extending polyps – aquarium may be further stocked. **Before introducing decorative fish, start with corals.**



**If all the parameters look fine, think of easy species** like: caulastrea candy cane, sinularia, pseudogorgia, euphyllia, seriatopora callendrium, seriatopora hystrix, stylophora. After they acclimate, you can start feeding with coral foods and supplements (**AF Amino Mix, AF Build, AF Energy, AF Vitality**).

When few weeks pass, if everything looks fine and healthy, you can slowly introduce decorative fish (clownfish, gobioid, cardinal and tangs). In a tank with really stable parameters you can introduce anthias. After a time, you can introduce more difficult, demanding corals and fish.

**Remember to test your water regularly and keep an eye on the parameters! Enjoy!**

## TIPS TO GET STARTED!

- before filling your aquarium with saltwater, you can check the system for water tightness by using freshwater
- in order to accelerate maturation process, you can put a cube of frozen food in the water
- as long as there are no animals in your aquarium, you can raise the main parameters without limits, if they're not in range
- if you plan to keep an SPS tank, don't put in soft corals - they're really expensive and have different requirements than SPS corals.

## CLEAN UP CREW

- **SNAILS:** banded trochus snails, tiger nassarius snails
- **CRABS:** emerald crabs, hermit crabs
- **SHRIMPS:** peppermint shrimp, blood red fire shrimp
- **BEFORE INTRODUCING DECORATIVE FISH, START WITH CORALS!**







# FISH ONLY FORMULA

This type of aquarium features only a variety of saltwater fish species with rock only, no corals. The unique formula provides perfect basic parameters and creates ideal environment for fish.

### DOSAGE PER 100 L OF AQUARIUM WATER (27 US GAL)

WEEKLY WATER CHANGE		FILTRATION MEDIA	
<b>SEA SALT</b> (SALINITY 30 PPT)	345 G	<b>LIFE BIO FIL</b>	250 ML
OPTIONAL:		<b>CARBON</b>	100 ML
<b>AF PERFECT WATER</b>	10%	<b>PHOSPHATE MINUS</b>	25-100 ML
BIOLOGY SETUP		MACROELEMENTS	
<b>BIO S</b>	1 DROP	THERE'S NO NEED	
<b>LIFE SOURCE</b>	1 SPOON/WEEKLY		
SUPPLEMENTATION		TESTS	
<b>FISH V</b>	1 DROP	AF TEST KIT: <b>NO<sub>3</sub></b> , <b>PO<sub>4</sub></b>	
<b>GARLIC OIL</b>	1 DROP		

**RECOMMENDED PARAMETERS**

Salinity	30-33 ppt
NO <sub>3</sub>	0-15 ppm
PO <sub>4</sub>	0,00-0,10 ppm

## SOFT, LPS & FISH FORMULA

Basic aquariums with mixed coral stocking, mostly soft corals. No SPS corals included. The formula was designed to keep water parameters on steady levels and provide ideal nutrient balance for soft and LPS corals growth and colouration.

### DOSAGE PER 100 L OF AQUARIUM WATER (27 US GAL)

<p><b>WEEKLY WATER CHANGE</b></p> <p><b>REEF SALT</b> (SALINITY 33 PPT) 390 G OPTIONAL: <b>AF PERFECT WATER</b> 10%</p>	<p><b>FILTRATION MEDIA</b></p> <p><b>LIFE BIO FIL</b> 250 ML <b>CARBON</b> 100 ML <b>PHOSPHATE MINUS</b> 25-100 ML</p>
<p><b>BIOLOGY SETUP</b></p> <p><b>BIO S</b> 1 DROP <b>PRO BIO F</b> 1 SPOON <b>LIFE SOURCE</b> 1 SPOON/WEEKLY</p>	<p><b>MACROELEMENTS</b></p> <p><b>CA PLUS, MG PLUS, KH PLUS</b> 10 ML</p>
<p><b>TRACE ELEMENTS</b></p> <p><b>COMPONENT A, B, C</b> 5ML</p>	<p><b>SUPPLEMENTATION*</b></p> <p><b>FISH V</b> 1 DROP <b>GARLIC OIL</b> 1 DROP <b>RICCO FOOD</b> 1 SPOON <b>AF PHYTO MIX</b> 1 SPOON <b>AF AMINO MIX</b> 1 DROP <b>AF VITALITY</b> 1 DROP</p>
<p><b>TESTS</b></p>	

AF TEST KIT: **MG, KH, CA, NO<sub>3</sub>, PO<sub>4</sub>**  
OPTIONAL: **AQUAFORREST LAB ICP-OES**

\*WE RECOMMEND TO START DOSING FOODS AND SUPPLEMENTS AT HALF OF THE RECOMMENDED DOSE (EVEN ¼) AND OBSERVING THE CORALS AND THEIR REACTIONS TO THE ADMINISTERED FOOD.

### RECOMMENDED PARAMETERS

Salinity	33-35 ppt	K	360-400 ppm
Ca	380-460 ppm	NO <sub>3</sub>	2-10 ppm
Mg	1180-1460 ppm	PO <sub>4</sub>	0,01-0,08 ppm
KH	6,5-8,0 dKH		

# MIXED-REEF FORMULA

This setup replicates ocean reef environment with less demanding hard corals, soft corals, invertebrates and variety of fish species. Reef-keeping formula was created basing on natural saltwater parameters in order to keep your mixed-reef inhabitants in an excellent condition.

## DOSAGE PER 100 L OF AQUARIUM WATER (27 US GAL)

WEEKLY WATER CHANGE	FILTRATION MEDIA
<b>REEF SALT</b> (SALINITY 33 PPT) 390 G OPTIONAL: <b>AF PERFECT WATER</b> 10%	<b>LIFE BIO FIL</b> 250 ML <b>CARBON</b> 100 ML <b>PHOSPHATE MINUS</b> 25-100 ML
BIOLOGY SETUP	MACROELEMENTS
<b>BIO S</b> 1 DROP SHOULD BE USED TOGETHER: <b>-NP PRO</b> 1 DROP <b>PRO BIO S</b> 1 DROP <b>LIFE SOURCE</b> 1 SPOON/WEEKLY DEPENDS ON NO <sub>3</sub> & PO <sub>4</sub> LEVELS: <b>NITRAPHOS MINUS</b>	<b>COMPONENT 1+2+3+</b> EQUAL AMOUNTS! OR: <b>COMPONENTS PRO</b> DOUBLE CONCENTRATED! OR: <b>MIX YOUR OWN</b> PAGE 14
TRACE ELEMENTS	SUPPLEMENTATION*
MICROELEMENTS ARE INCLUDED IN COMPONENT 1+ 2+ 3+	<b>FISH V</b> 1 DROP <b>GARLIC OIL</b> 1 DROP <b>AF POWER FOOD</b> 1 SPOON <b>RICCO FOOD</b> 1 SPOON <b>AF AMINO MIX</b> 1 DROP <b>AF BUILD</b> 1 DROP <b>AF ENERGY</b> 1 DROP <b>AF VITALITY</b> 1 DROP
TESTS	

AF TEST KIT: **MG, KH, CA, NO<sub>3</sub>, PO<sub>4</sub>**  
 OPTIONAL: **AQUAFORREST LAB ICP-OES**

\*WE RECOMMEND TO START DOSING FOODS AND SUPPLEMENTS AT HALF OF THE RECOMMENDED DOSE (EVEN ¼) AND OBSERVING THE CORALS AND THEIR REACTIONS TO THE ADMINISTERED FOOD.

## RECOMMENDED PARAMETERS

Salinity	33-35 ppt	K	360-400 ppm
Ca	380-460 ppm	NO <sub>3</sub>	2-5 ppm
Mg	1180-1460 ppm	PO <sub>4</sub>	0,01-0,05 ppm
KH	6,5-8,0 dKH		

# AF PROBIOTIC METHOD

Aquariums with the most demanding SPS corals stocking. Provides perfect environment for hard corals growth and allows keeping nitrate and phosphate at the lowest levels possible. Low nutrient levels provided by the presence of probiotic bacteria ensure perfect colouration of corals.

## DOSAGE PER 100 L OF AQUARIUM WATER (27 US GAL)

WEEKLY WATER CHANGE	FILTRATION MEDIA
<b>PROBIOTIC REEF SALT</b> (SALINITY 33 PPT) 390 G OPTIONAL: <b>AF PERFECT WATER</b> 10%	<b>LIFE BIO FIL</b> 250 ML <b>CARBON</b> 100 ML <b>PHOSPHATE MINUS</b> 25-100 ML <b>ZEO MIX</b> 100 ML
BIOLOGY SETUP	MACROELEMENTS
<b>BIO S</b> 1 DROP SHOULD BE USED TOGETHER: <b>-NP PRO</b> 1 DROP <b>PRO BIO S</b> 1 DROP <b>LIFE SOURCE</b> 1 SPOON/WEEKLY DEPENDS ON NO <sub>3</sub> & PO <sub>4</sub> LEVELS: <b>NITRAPHOS MINUS</b>	<b>COMPONENT 1+2+3+</b> EQUAL AMOUNTS! OR: <b>COMPONENTS PRO</b> DOUBLE CONCENTRATED! OR: <b>MIX YOUR OWN</b> PAGE 14
TRACE ELEMENTS	SUPPLEMENTATION*
MICROELEMENTS ARE INCLUDED IN COMPONENT 1+ 2+ 3+, OPTIONALLY: <b>FLUORINE, KALIUM, IRON, IODINE, STRONTIUM, MICRO E</b> 1 DROP* OR: AF LAB MICROELEMENTS *HIGHEST CONCENTRATION! DOSE CAREFULLY	<b>FISH V</b> 1 DROP <b>GARLIC OIL</b> 1 DROP <b>AF POWER FOOD</b> 1 SPOON <b>RICCO FOOD</b> 1 SPOON <b>AF AMINO MIX</b> 1 DROP <b>AF BUILD</b> 1 DROP <b>AF ENERGY</b> 1 DROP <b>AF VITALITY</b> 1 DROP
TESTS	

AF TEST KIT: **MG, KH, CA, NO<sub>3</sub>, PO<sub>4</sub>**  
 OPTIONAL: **AQUAFOREST LAB ICP-OES**

\*WE RECOMMEND TO START DOSING FOODS AND SUPPLEMENTS AT HALF OF THE RECOMMENDED DOSE (EVEN ¼) AND OBSERVING THE CORALS AND THEIR REACTIONS TO THE ADMINISTERED FOOD.

## RECOMMENDED PARAMETERS

Salinity	33-35 ppt	K	360-400 ppm
Ca	380-460 ppm	NO <sub>3</sub>	0,1-0,5 ppm
Mg	1180-1460 ppm	PO <sub>4</sub>	0,01-0,04 ppm
KH	6.5-8,0 dKH		