

# HOW YOU GET THERE MATTERS.

## *Admissions Procedure*

# RBC

The Red Bank Catholic Admissions Department processes applications for incoming freshmen.

Some important items for those interested in attending Red Bank Catholic High School in the 2013-2014 school year are:

### APPLICATION DEADLINE NOVEMBER 2, 2012

---

As soon as you decide to apply for admission to Red Bank Catholic, mail the application with the \$25 application fee and \$25 test fee to us. We will acknowledge the receipt of your application and begin an active file in your name.

#### Transcript Release Form:

This form should be signed and dated by a parent or legal guardian of the applicant. Please return this form with your application.

#### Admissions Criteria:

The criteria for admission to Red Bank Catholic High School is as follows:

1. Elementary school academic records for 6th, 7th and 8th grades
2. Attendance records for 6th, 7th and 8th grades
3. Behavior records for 6th, 7th and 8th grades

### PLACEMENT TEST NOVEMBER 10, 2012

---

The placement test will be held at Red Bank Catholic High School at 8:00AM. You must take the test in order to have your application for admission to Red Bank Catholic considered. You must have an application on file with the Admissions Office prior to the test date. **Please plan to take the test at Red Bank Catholic and state that Red Bank Catholic is your first choice school.** Testing alone does not constitute admission into Red Bank Catholic High School. Please note that the placement test is used as a vehicle to place the incoming student in the correct level of classes.

### DECISION NOTIFICATION MAILED JANUARY 2013

---

For those applications received prior to, or on, November 2, 2012, the Admissions Committee will make acceptance notifications once the application process is complete. We will mail notifications in January 2013. Applications received after November 2, 2012, will be **considered late** and processed on a space available basis, beginning March 1, 2013.

### FINANCIAL AID FILING DEADLINE: APRIL 5, 2013

---

Limited financial aid is available. Financial Aid forms are available through the RBC Admissions Office on December 3, 2012. Applications must be completed and submitted directly to FACTS Grant and Aid Assessment, Lincoln, Nebraska. No applications for financial aid will be accepted at Red Bank Catholic High School. Financial aid awards will be based on financial need only, as determined by FACTS.

### ONLINE APPLICATIONS

---

The downloadable application form is available on the RBC Website. Please mail the completed application (do not file online), transcript release form and the \$25 application fee and \$25 test fee to

Red Bank Catholic High School  
Admissions  
112 Broad Street  
Red Bank, NJ 07701

Any further questions regarding the admissions process may be answered by calling the Admissions Office at (732) 747-5113.



HOW YOU GET THERE MATTERS.

## Open House

# RBC

### OPEN HOUSE 🍀 SUNDAY, OCTOBER 28, 2012 🍀 1:30 - 4:30 PM

In addition to our Open House on Sunday, October 28, 2012, Red Bank Catholic High School gives small group tours on selected school days. Tours begin at 9:00AM in the Broad Street Auditorium and last approximately one hour. These tours enable families to obtain information about RBC and to see our school on a typical school day. RBC does not offer a "student for the day" program.

Reservations are required for these tours, as space is limited on each tour day.

For reservations and information, please call the Admissions Office at (732) 747-5113 between 8:00AM and 3:00PM.



## TOURS

### SEPTEMBER

Thursday, September 20  
Tuesday, September 25  
Wednesday, September 26

### OCTOBER

Wednesday, October 3  
Thursday, October 4  
Wednesday, October 10  
Thursday, October 11  
Tuesday, October 16  
Thursday, October 18  
Tuesday, October 23  
Tuesday, October 30

### NOVEMBER

Friday, November 2

### APRIL

Tuesday, April 16  
Thursday, April 18  
Wednesday, April 24  
Thursday, April 25  
Tuesday, April 30

### MAY

Wednesday, May 1



## RBC PROFILE

- College preparatory curriculum
- School enrollment: 1,020
- Ethnically diverse student body
- Faculty/Administration: 101 including five Guidance Counselors and a Learning Consultant
- 16 AP courses
- The school year: August 29, 2012 to June 18, 2013

## SCHOOL AFFILIATIONS

- Middle States Association of Colleges and Schools
- National Catholic Education Association
- American Association of School Administrators
- National Association of Secondary School Principals
- Association for Supervision and Curriculum
- The College Board

## MARKING SYSTEM

- A+ = 98-100 A = 93-97 A- = 90-92  
B = 85-89 B- = 82-84 C = 77-81 C- = 75-76  
D = 70-74 F = < 70
- GPA Based on A = 4, B = 3, C = 2, D = 1
- Courses are weighted according to level of difficulty
- Graduation Requirements: 130 credits

## COLLEGE PLACEMENT DATA

### **Graduates of the Class of 2012**

- 99% continued to higher education
- 89% went on to four-year colleges or universities
- 10% went on to two-year colleges or career education
- 1% entered the work force

### **Graduate Honors**

- 65% of the 250 members of the class of 2012 were offered \$14,900,450 in scholarships in the areas of academics, athletics and the arts.

### **Average Performance for the Class of 2011-2012 on College Board Examinations**

- Mean Critical Reading SAT for students matriculating to 4 year colleges: 541
- Mean Math SAT for students matriculating to 4 year colleges: 532
- Mean Writing SAT for students matriculating to 4 year or 2 colleges: 550
- Mean Critical Reading SAT for the top 10% of the class: 661
- Mean Math SAT for the top 10% of the class: 649
- Mean Writing SAT for the top 10% of the class: 672

### **Advanced Placement Statistics for the Class of 2012**

- 33% of the Class of 2012 took one or more AP exams
- 76 % earned at least one score of 3 or better
- 104 sophomores, juniors and seniors took a total of 172 AP exams
- 14 seniors and 2 juniors were named AP Scholars, Ap Scholars with Honors, or AP Scholars with Distinction



HOW YOU GET THERE MATTERS.

# Course Offerings

# RBC

## RELIGION

Scripture  
Paschal Mystery of the Church  
Christian Living  
Church History/ Social Justice  
Introduction to Philosophy  
History of Sacred Music & Liturgy  
Honors 21st Century Gospel Mission  
Honors Globalization & Justice\*

## ENGLISH & LANGUAGE ARTS

Study Skills  
English I\*  
American Literature\*  
Major British Writers\*  
Literature & Media Studies  
Writing Workshop  
Modern Literature  
Speech & Dramatic Literature  
Detective Fiction  
Analysis of Contemporary Novels  
Study of Children's Literature  
World of the Short Story  
Advanced Placement English

## HISTORY & GOVERNMENT

U.S. History I\*, II\*  
World History\*  
Honors 20th Century History  
American Government and Politics  
Contemporary Global Issues  
Issues of Modern Social Justice  
Advanced Placement  
    American History  
Advanced Placement  
    World History  
Advanced Placement  
    Government/Politics

## VISUAL ARTS

Topics in Art  
General Art  
Art History  
Ceramics/Crafts  
Computer Graphics  
Design  
Digital Imaging  
Drawing  
Print Making

## BUSINESS & TECHNOLOGY

Accounting \*  
Introduction to Business  
Microsoft Office  
Economics\*  
Advanced Placement Economics  
Honors Accounting I & II  
Personal Law  
Securities & Investments  
International Business  
Sports Entertainment  
    & Hospitality Merchandising  
Animation  
Broadcasting  
Film Study  
Money Matters  
Fashion Marketing  
Yearbook Production

## MATHEMATICS

Algebra I\*, II\*  
Geometry\*  
Probability & Statistics  
Financial Algebra  
Functions, Analysis & Trigonometry  
Honors Pre-Calculus  
Honors Applied Calculus  
Advanced Placement  
    Calculus AB & BC  
Advanced Placement Statistics

## WORLD LANGUAGE

Intermediate Spanish I  
Spanish I, II\*, III\*, IV\*  
Hispanic Culture and Civilization  
Advanced Placement Spanish  
French I, II, III, IV, V  
Advanced Placement French  
Latin I, II, III^, IV^

## SCIENCE

Concepts of Chemistry & Physics  
Biology  
Chemistry  
Forensic Science  
Environmental Studies  
Human Physiology  
Marine Science  
Physics\*  
Introduction to Engineering  
Advanced Placement  
    Environmental Science  
Advanced Placement Biology  
Advanced Placement Chemistry  
Advanced Placement Physics

## SOCIAL SCIENCE

Leadership  
Criminology & Law  
Principles of Psychology I & II  
Sociology

## PERFORMING ARTS

Honors Theatre Arts I, II  
Dance (Grades 11 & 12)\*  
Voice Performance  
Honors Music Theory  
Music Appreciation and History  
Music Technology  
Film Music  
Advanced Placement Music Theory

## PHYSICAL EDUCATION

Physical Education I, II, III, IV  
Health Education  
Driver Education  
CPR & First Aid  
Health Maintenance and Wellness  
Prevention / Care of Athletic Injuries

\* Also offered on the Honors Level    ^ Honors Level Only

HOW YOU GET THERE MATTERS.

# Athletics

# RBC

29 Varsity Sports  
48 Levels

## MEN'S SPORTS

### Fall

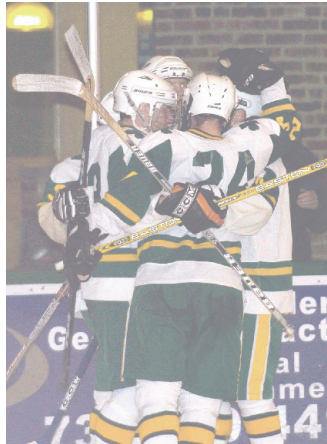
Football  
Cross Country  
Soccer

### Winter

Basketball  
Wrestling  
Indoor Track  
Ice Hockey  
Swimming

### Spring

Baseball  
Track & Field  
Tennis  
Golf  
Lacrosse  
Volleyball



## WOMEN'S SPORTS

### Fall

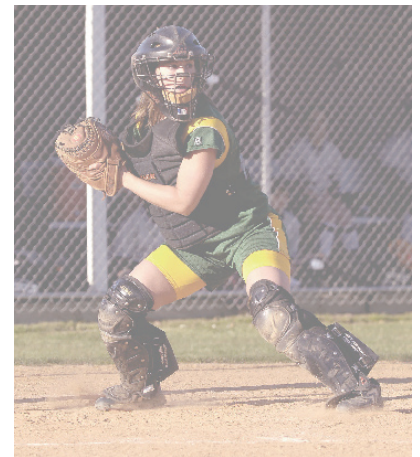
Cheerleading  
Cross Country  
Tennis  
Gymnastics  
Field Hockey  
Soccer  
Volleyball

### Winter

Basketball  
Cheerleading  
Indoor Track  
Swimming

### Spring

Softball  
Track & Field  
Lacrosse  
Golf



In the last 10 years RBC sports teams have won more than 150 titles including several Tri-State Championships



# HOW YOU GET THERE MATTERS. *Programs, Clubs & Services*

# RBC

The largest club at RBC is the LIFE Club, "Living in Faith Effectively." The 300 members are involved in outreach programs for local, national and international agencies.



## Performing Arts & Music

After School Dance\*  
After School Drama  
Chamber Choir  
Concert Choir  
Dance Club  
Dance Company\*  
Drama and Musical\*  
Orchestra  
Guitar Club  
Hand Bell Choir  
Jazz Band

\* Audition Required

## Service

Arts from the Heart  
Casey Ambassadors  
Casey Caregivers  
Casey Volunteers  
Hot Topics  
LIFE Club  
Make-a-Wish  
Peer Leadership  
Stewards of Creation  
Student Council

## Academic Interests

After School Art  
Future Business Leaders of America (FBLA)  
Forensics/Mock Trial  
Junior Statesmen  
Lab Assistants  
Math Tutors  
Model UN  
National Honor Society  
Physics Competitions  
Psychology Research Project  
Senior Leadership Internship  
Spanish Peer Tutoring  
Stock Market Club  
Sign Language

## Religious Interest

Maryknoll Affiliates  
Catholic Athletes for Christ  
Liturgical Dance

## Publications

The Emerald (Yearbook)  
Reflections (Literary Magazine)  
The Signpost (Newspaper)  
Yearbook Club

## Personal Interest

Art Club  
Book Club  
Car Club  
Construction Management  
Fashion Club  
Improv Club  
Manhattan Culture  
Multicultural Club  
Pet Lovers Club  
Physical Education Club  
Photography Club  
RBC Sportscasters  
Robotics Club  
Scrapbook Club  
Sailing Club  
Taste of Red Bank  
Yarn Club



*Activities are subject to change*



For the past several years RBC has raised about \$11,000 *each year* for CROP WALK, at times highest of any Catholic High School in the country.



# HOW YOU GET THERE MATTERS.

## Guidance Services

# RBC

*Each fall parents send their children off to high school. The decision of where to send them is influenced by geography, culture and aspirations. The decision is also influenced by a hope that their student be guided, assisted and nurtured as they navigate uncharted and profound territory. How their gifts, their talents, their academic, social and personal needs will be recognized, supported and directed is specifically the role of the Guidance Department. Guidance is a source of advocacy, direction and information for students and parents.*

*Our philosophy of "everyone matters, and everyone is unique" is the foundation for all guidance activities. Our approach to serving our students is designed to meet needs inherent to each grade level as well as to address unique personal situations that require patience, time, professionalism and individual attention. Communication, the sharing of ideas and concerns, is the key to meeting these needs successfully.*

## TEACHER ADVISOR PROGRAM

We strive to create a culture at RBC that fosters a faculty partnership with guidance. We are aware that freshmen in particular have unique concerns and needs. Helping them find their way early on is critical to their successful adjustment to high school. Our Teacher Advisor Program was developed to address this. Teacher Advisors are faculty members chosen specifically for their unique interpersonal gifts. They work exclusively with small numbers of freshmen in groups and individually. Teacher Advisors work under the direct supervision of guidance counselors. They are an important first resource and a liaison between teachers, students and their families. Students are assigned a guidance counselor in their sophomore year who works in partnership with them until they graduate.



## SPECIFIC COUNSELING SERVICES

Our professional Guidance Counselors schedule a private conference with their students and parents each year. Several adjunct professionals team with guidance to ensure that we are fully equipped to address the needs of every student. We have a full time Learning Consultant to oversee all aspects of our classified students' journey at RBC. There is a faculty staffed Enrichment Center available to all students seeking specific help with a specific subject or writing and study skills enhancement. We engage a Student Assistance Coordinator and a Social Worker as part of our counseling team. These professionals help to ensure that we can address the myriad of needs high school students may have.

## SPECIAL EMPHASIS SEMINARS

Parents are partners in their child's high school education. Guidance sponsors unique programs each with a specific focus. These seminars are designed to inform and direct students and parents at different signposts on the journey.

There are a series of large group sessions for each grade level. The focus of the freshman seminar is "making the most of every opportunity." The sophomore session alerts students to the need to start thinking about future careers and college early. Junior and senior level programs offer a hands-on approach to manage successfully the college search, decision and enrollment process. A unique seminar is offered in partnership with the Athletic Department focusing on the special needs of and the demands on the student athlete. These seminars are a source of information and an opportunity for parents and students to participate and plan together.

## RESOURCES ON THE GUIDANCE WEBSITE

The guidance website, [www.rbcguidance.com](http://www.rbcguidance.com), is continually updated with the latest resources for academics, volunteer service, college, careers and scholarships. Red Bank Catholic is a college prep high school, and as such, we anticipate that every student aspires to further their education. Consistently over the last 20 years, 99% of each senior class goes on to 2 or 4 year colleges. Resources, such as the web link from the guidance website to "Naviance Family Connection," provide students and parents with concrete data to help them make informed decisions about the right college match for them.

Our overall approach to guidance reflects our ambition to treat each student and each situation individually. There are no "one size fits all" answers here. We design programs to encourage our students to "Dream Big... Live Large... Prepare at RBC."



# RED BANK CATHOLIC

## CLASS OF 2012 COLLEGE ACCEPTANCES

---

Adelphi University  
The University of Alabama  
Albany College of Pharmacy  
Alvernia University  
Arcadia University  
Arizona State University  
University of Arkansas  
Assumption College  
Auburn University  
Baltimore International College  
Barry University  
Belmont Abbey College  
Bentley University  
Berklee College of Music  
Boston College  
Boston University  
Bowling Green University  
Brookdale Community College  
Bryant University  
Cabrini College  
The Catholic University of America  
University of Central Florida  
College of Charleston  
Chestnut Hill College  
University of Chicago  
Clemson University  
Coastal Carolina University  
Colgate University  
University of Connecticut  
Cornell University  
Dartmouth College  
Delaware Valley College  
University of Delaware  
DeSales University  
Drew University  
Duke University  
Duquesne University  
East Carolina University  
East Stroudsburg University of PA  
Elon University  
Emerson College  
Fairfield University  
Fairleigh Dickinson University  
Fashion Institute of Technology  
Fisher College  
Florida Atlantic University  
Florida Gulf Coast University  
Florida Institute of Technology  
Florida State University  
Fordham University  
George Mason University  
Georgetown University  
Georgia Institute of Technology  
Gordon College  
University of Hartford  
Harvard University  
Hawaii Pacific University  
High Point University  
Hofstra University  
College of the Holy Cross  
Howard University  
Immaculata University

Indiana University at Bloomington  
Iona College  
Ithaca College  
Jacksonville University  
James Madison University  
John Jay College of Criminal Justice  
Johns Hopkins University  
Johnson and Wales University  
Kean University  
University of Kentucky  
Kutztown University  
La Salle University  
LaFayette College  
Lehigh University  
Liberty University  
LIM College  
Long Island University  
University of Louisville  
Loyola Marymount University  
Loyola University at Maryland  
Loyola University New Orleans  
Lycoming College  
Lynchburg College  
Lynn University  
Maine Maritime Academy  
University of Maine  
Manhattan College  
Marist College  
Marshall University  
University of Mary Washington  
University of Maryland  
Marymount Manhattan College  
Marymount University  
University of Massachusetts  
Massachusetts College of  
Pharmacy and Health Sciences  
University of Massachusetts  
Miami University of Ohio  
University of Miami  
University of Michigan  
University of Minnesota  
Misericordia University  
Monmouth University  
Montclair State University  
Mount Saint Mary's University  
Muhlenberg College  
University of New England  
University of New Hampshire  
University of New Haven  
New Jersey City University  
New Jersey Institute of Technology  
The College of New Jersey  
New York Institute of Technology  
New York University  
University of North Carolina  
Northeastern University  
Ohio University  
Old Dominion  
Pace University  
Parsons School for Design  
Pennsylvania College of Technology  
Pennsylvania State University

Philadelphia University  
University of Pittsburgh  
Pratt Institute  
Princeton University  
Providence College  
Purdue University  
Quinnipiac University  
Ramapo College of New Jersey  
University of Rhode Island  
Rice University  
Richard Stockton College of NJ  
University of Richmond  
Rider University  
Rochester Institute of Technology  
Roger Williams University  
Rowan University  
Rutgers University  
Sacred Heart University  
Saint Francis University  
Saint Joseph's University  
Saint Leo University  
Saint Michael's College  
Saint Peter's College  
Salisbury University  
Salve Regina University  
San Diego State University  
University of San Diego  
San Francisco State University  
Savannah College of Art and Design  
University of the Sciences in Philadelphia  
The University of Scranton  
Seton Hall University  
University of South Carolina  
University of South Florida  
Southern Connecticut University  
Stanford University  
St. Bonaventure University  
St. John's University  
St. Thomas Aquinas  
Stevens Institute of Technology  
Stonehill College  
Syracuse University  
The University of Tampa  
Towson University  
Tulane University  
University of Vermont  
Villanova University  
University of Virginia  
Virginia Commonwealth University  
Virginia Military University  
Virginia Polytechnic Institute  
Virginia Wesleyan College  
Wagner College  
Wesley College  
West Chester University  
West Virginia University  
College of William and Mary  
William Paterson University of NJ  
Worcester Polytechnic Institute  
Xavier University  
York College of Pennsylvania



HOW YOU GET THERE MATTERS.  
*Application for Admission*

# RBC

Application for Admission to Grades 9 through 12 to be completed by Parent or Guardian.  
Please complete all 4 pages of this application.

For Grade (circle one) 9 10 11 12 Entering Fall of \_\_\_\_\_

## APPLICANT

---

Name \_\_\_\_\_ Phone # \_\_\_\_\_

Home Address \_\_\_\_\_

Sex: Male Female Birth Date \_\_\_\_/\_\_\_\_/\_\_\_\_ E-Mail \_\_\_\_\_

Parish \_\_\_\_\_

## SCHOOLS

---

Present School \_\_\_\_\_

Address \_\_\_\_\_

Phone # \_\_\_\_\_ Principal/Headmaster \_\_\_\_\_

Dates Attended \_\_\_\_\_ Grades Attended \_\_\_\_\_

Previous Schools - List in order, most recent first:

1) School \_\_\_\_\_ 2) School \_\_\_\_\_

City, State \_\_\_\_\_ City, State \_\_\_\_\_

Dates Attended \_\_\_\_\_ Dates Attended \_\_\_\_\_

Check if Interested in Receiving Financial Aid Information

## GENERAL INFORMATION

---

Please submit this application along with the non-refundable application fee to:

Red Bank Catholic High School  
112 Broad Street - Red Bank, NJ 07701  
Attn: Cheryl Thompson, Office of Admissions

If my child is accepted, I understand that I must submit a copy of his or her immunizations to the Admissions Office prior to his or her registration.

Applications for the Class of 2017 are due on November 2, 2012. Acceptance preference will be given to students whose applications are completed and submitted to Red Bank Catholic High School on or before that date.

## FEE INFORMATION

---

Test Fee: \$25  
For incoming freshmen only.

Application Fee: \$25  
This fee is waived as a legacy courtesy for students whose parents or grandparents are Red Bank Catholic graduates.

\_\_\_\_\_ Total Enclosed \$50/\$25  
Checks payable to:  
Red Bank Catholic High School  
All fees are non-refundable

For office use only

P \_\_\_\_\_

S \_\_\_\_\_

L \_\_\_\_\_

J \_\_\_\_\_

R \_\_\_\_\_

O \_\_\_\_\_

## APPLICANT- PART TWO

---

Has your child had any educational testing for:

- Learning Disabilities
- Child Study Team Evaluation
- Supplemental Instruction
- Resource Room
- Other Special Education Experience

If you answered yes to any of the above, please explain:

---

---

---

---

Has your child ever been suspended from school, or been involved in any serious disciplinary infraction?

Yes  No  If yes, please explain:

---

---

---

Are there any excessive absences in your child's records?

Yes  No  If yes, please explain:

---

---

---

Has your child previously applied to Red Bank Catholic?

Yes  No  If yes, what year: \_\_\_\_\_

## APPLICANT - PART THREE - RESUME

---

Name \_\_\_\_\_

School \_\_\_\_\_

Academic Achievements

---

---

---

---

---

---

---

---

---

---

Cultural/Community/Club/Athletic/Parish Affiliations and/or Achievements

---

---

---

---

---

---

---

---

---

---

APPLICANT - PART FOUR - FAMILY

Father/Guardian Last First Middle

Home Address: Street City State Zip

Phone Numbers: Home Cell Work

E-mail: Employer:

Title: Employer Address:

Mother/Guardian Last First Middle

Home Address: Street City State Zip

Phone Numbers: Home Cell Work

E-mail: Employer:

Title: Employer Address:

If parents are separated or divorced, with whom does the applicant live?

Do you want both parents to receive correspondence? Yes No

Please list any other children in your family:

Name Age School Grade (repeated three times)

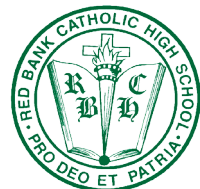
Please list other members of your family (including parents & grandparents) who have attended RBC:

Name Relationship to Applicant (repeated three times)

I certify that the information provided here is true and accurate. Date

Signature of Parent Signature of Applicant

Red Bank Catholic High School admits students of any race, color, religion, national and ethnic origin to all rights, privileges, and activities generally accorded to or made available to students at the school, and strives to make its programs and facilities accessible to all without regard to physical or medical condition or disability. It does not discriminate on the basis of race, color, religion, national and ethnic origin in administration of its education policies, administration policies, scholarship and loan programs and athletic administered programs.



HOW YOU GET THERE MATTERS.  
*Request for Records*

# RBC

## STUDENT INFORMATION

---

Name of School Presently Attending \_\_\_\_\_

Street Address \_\_\_\_\_

City \_\_\_\_\_ State \_\_\_\_\_ Zip \_\_\_\_\_

---

Dear Registrar,

Student's Name \_\_\_\_\_

Birth Date \_\_\_\_\_ Last Grade In Your School \_\_\_\_\_

The student named above has applied to our school for admission. Please forward a complete grammar school transcript which should include quarterly and final report card grades received in the 6th, 7th and 8th grades. Please also include a copy of the standardized test card for the 6th, 7th and 8th grades, achievement and ability testing, attendance and discipline records, as well as any child study team evaluations.

Thank you for your cooperation.

Sincerely yours,  
Cheryl Thompson/Admissions Officer

---

## PARENT/GUARDIAN RELEASE

---

I hereby authorize the release of all school records, including psychological records, child study team evaluations and standardized testing of my child \_\_\_\_\_ to Red Bank Catholic High School.

Date \_\_\_\_\_ Signature of Parent/Guardian \_\_\_\_\_

Relationship \_\_\_\_\_

