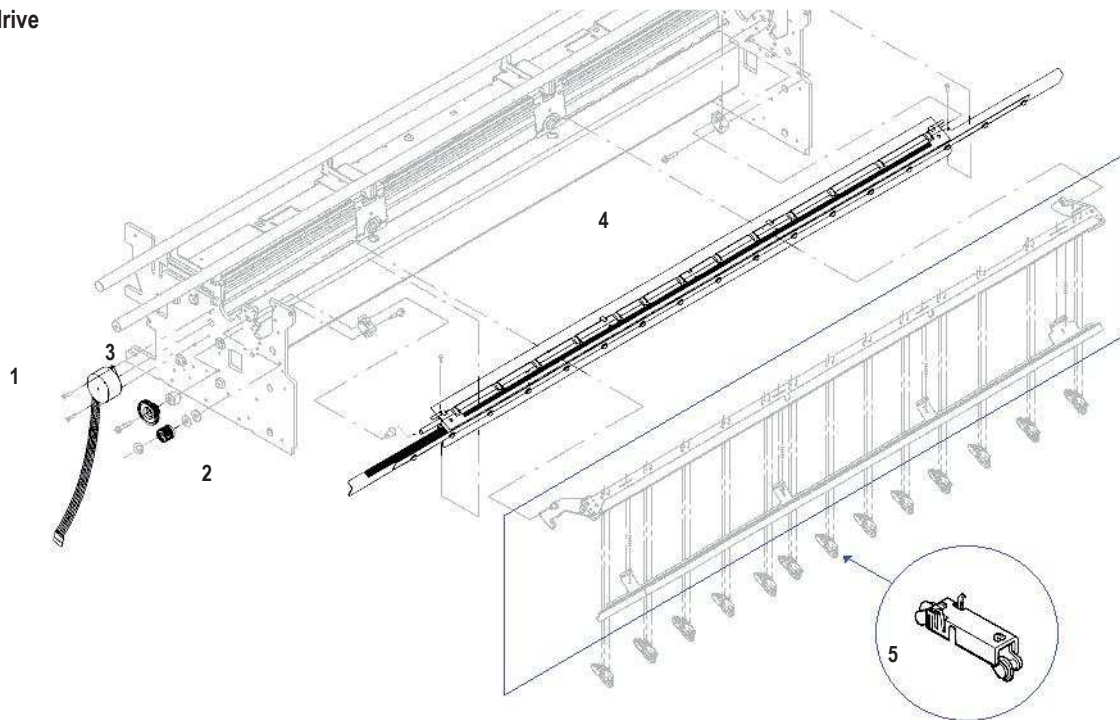
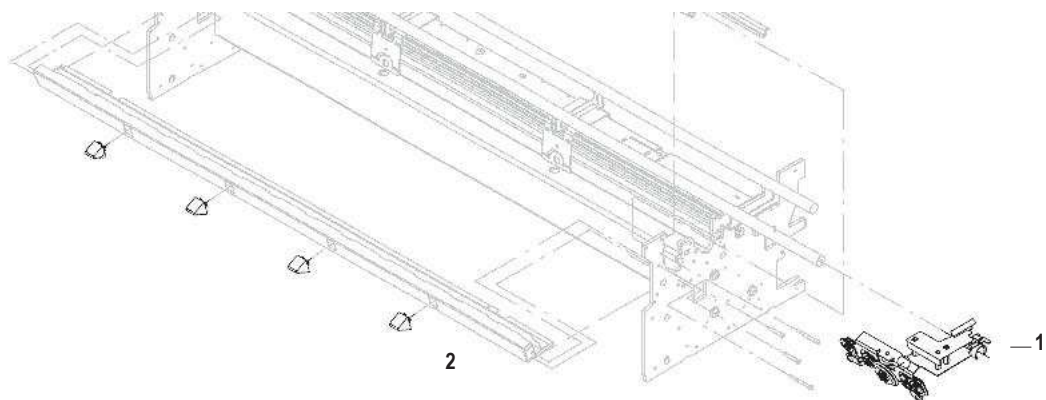


Bail and Overdrive



Ref	Part Number	Description
1	C3195-60009*	Bail stepper motor - Used to drive the bail assembly - Mounts on left side plate of plotter
2	C4705-60089	Clutch / overdrive gear assembly - Includes gear, clutch, retaining clip, and two washers - Mounts above the cluster gear on the left side plate of the plotter
3	C1633-40019	Overdrive gear cluster - Cluster gear - Mounts to the left side plate of the plotter - Between the paper drive roller gear and the overdrive gear
4	C4705-60121*	Overdrive assembly (D) - Includes roller, enclosure, bushings - Mounts between the left and right side plates of the plotter
5	C4713-60035	Starwheel mount assembly - Includes cover, body, spring and two starwheels - (Nine used) mounts on the bail assembly (Note: part number is for one starwheel mount assembly ONLY)

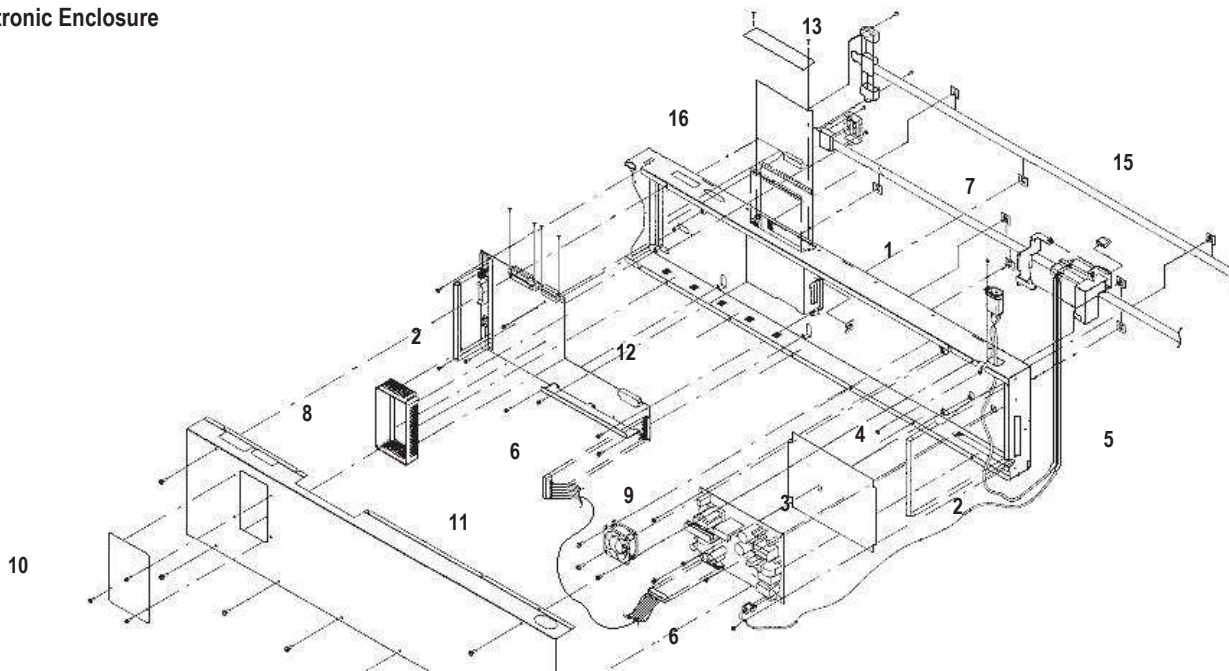
Cutter Assembly



Ref	Part Number	Description
1	C2858-60021*	Cutter mechanism assembly - Auto cutter for rollfeed paper
2	C3195-40045	Media guide (Small triangular shaped piece) - Mounts to the cutter assembly enclosure bar

* Artikel sind obsolete

Electronic Enclosure

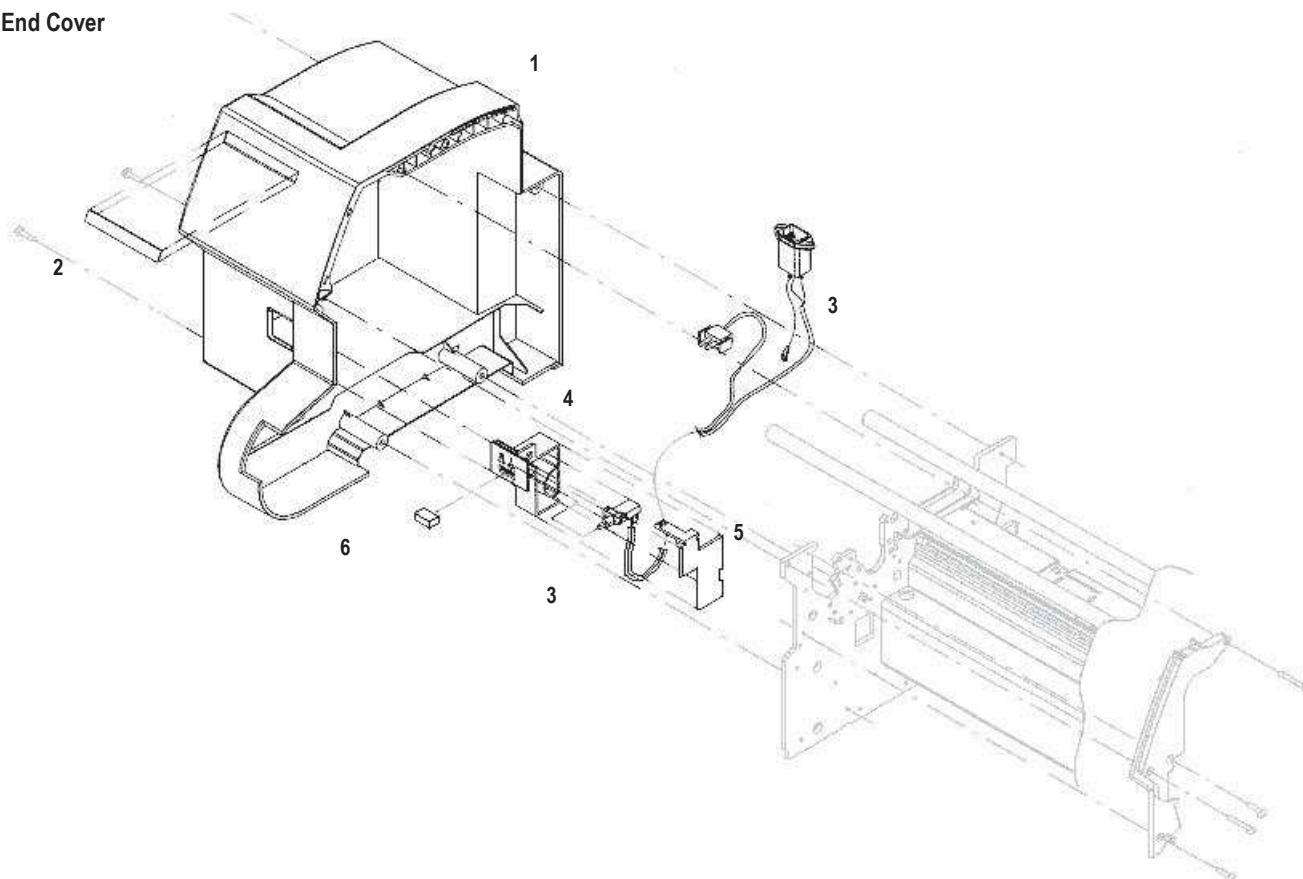


Ref	Part Number	Description
1	C4705-60092*	Electronic housing assembly (PC board enclosure) - Mounts on rear of plotter (D-Size, 24-Inch)
	C4706-60092	Electronic housing assembly (PC board enclosure) - Mounts on rear of plotter (E-Size, 36-Inch)
2	C3195-80005*	RFI shield (Gasket) - Braided shield with adhesive strip attached to electronic housing - RFI shield (Gasket) - Braided shield with adhesive strip attached to electronic housing -Two used
3	0950-2623	Switching power supply (Delta DPS-158ABA) - 100-240VAC input, 47-63Hz - Four DC outputs (5.15V, +12V, -12V, 24V) - 158 watts - Includes upgrade sticker
4	C3190-00016*	Insulator - Mounts between the power supply and main cover/panel of the electronic enclosure assembly
5	C3195-60149*	AC wiring harness - Includes power switch, AC receptacle, and connector - Plugs into power supply board)
6	C3195-60056*	Power supply cable - Has 12-pin (F) connectors - 9.5cm (3.7in) long - From power supply to main logic board (D-Size, 24-Inch)
	C3196-60056	Power supply cable - Has 12-pin (F) connectors - 39.7cm (15.6in) long - From power supply to main logic board (E-Size, 36-Inch)
7	C3195-60057*	Cable : Ribbon cable assembly (Black) - Contains a 12 wire 82.6cm (32.5in) cable and a 14 wire 96.5cm (38in) cable - Connectors are a 28-pin (F) connector, three 6-pin (F) marked ,SVS', ,Bail', and ,Primer', a 4-pin (F), and a 4-pin (M) (D-Size, 24-inch)
	C3196-60057	Cable : Ribbon cable assembly (Black) - Contains a 12 wire 1.1m (3.8ft) cable and a 14 wire 1.3m (4.2ft) cable - Connectors are a 28-pin (F) connector, three 6-pin (F) marked ,SVS', ,Bail', and ,Primer', a 4-pin (F), and a 4-pin (M) (E-Size, 36-Inch)
8	C4704-40050*	SIMM module shield - SIMM module shield (Barrier) - Protective metal rectangular housing - Surrounds SIMM slots on the Main Logic board (D-Size, 24-Inch)
	C4705-60088	Unicover assembly - Plastic cover which is used in place of the center cover, electrical cover assembly, SIMM cover, and SIMM barrier
	C4705-60089	SIMM module shield - SIMM module shield (Barrier) - Protective metal rectangular housing - Surrounds SIMM slots on the Main Logic board (E-Size, 36-Inch)
9	C3190-60137*	Tubeaxial fan - Mounts just above the power supply board inside the electronic enclosure assembly
10	C3195-00009	Unicover assembly - Plastic cover which is used in place of the center cover, electrical cover assembly, SIMM cover, and SIMM barrier
11	C3195-60053*	Back cover/panel - Metal cover for the electronic enclosure assembly
12	C4708-69001*	Main logic board - Includes integrated RS232-C (Serial) and bi-tronics/centronics (Parallel) interface ports
13	C1633-00031	MIO slot access cover - Mounts near the center of the main cover/panel on the electronic enclosure assembly
14	5041-1203	Power switch keycap (White)
15	C3195-80009	Carriage assembly trailing cable - Two ribbon cables bundled together - 1.8m (6.0ft) long - From carriage assembly to main logic board

* Artikel sind obsolete

Ref	Part Number	Description
16	J2550-69013	EtherTwist 10Base-T LAN interface board - EtherTwist (10Base-T) LAN Interface Board (J2550A/B)
	J2550B*	EtherTwist (10Base-T) LAN interface board
	J2552B*	LAN & LocalTalk interface - Has EtherTwist (10Base-T) , ThinLAN (10Base-2) , and LocalTalk (DIN-8) connectors - LAN & LocalTalk Interface - has EtherTwist (10Base-T), ThinLAN (10Base-2), & LocalTalk (DIN-8) Connectors
	J2555-69013	Token ring LAN interface board - DB-9 and RJ-45 connectors - Token Ring LAN Interface Board - DB-9 and RJ-45 Connectors (J2555A/B)
	J2555B*	Token ring LAN interface board - DB-9 and RJ-45 connectors
	J4100-69001	JetDirect 400N modular input/output (MIO) internal print server - Provides 10/100Base-TX or 10Base-2 network connection using RJ45 or BNC connectors -

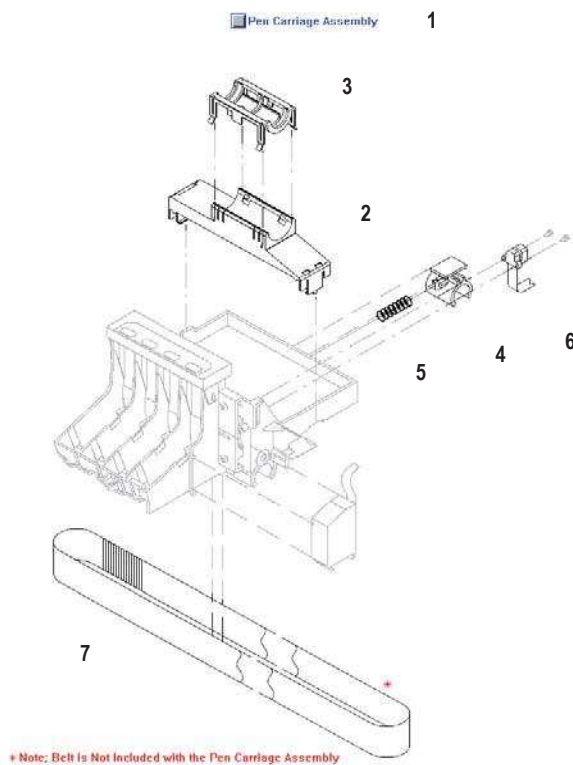
Left End Cover



Ref	Part Number	Description
1	C4705-60106	Left end cover
2	C3195-00019*	Nameplate - DesignJet 750C printer logo - Mounts on the left end cover (C3195A, C3196A)
	C4708-00020*	Nameplate - DesignJet 750C printer logo - Mounts on the left end cover (C4708A, C4709A)
3	C3195-60149*	AC wiring harness - Includes power switch, AC receptacle, and connector - Plugs into power supply board)
4	C3180-40012	Switch housing (mount) - For protecting the power switch
5	C3195-40047	Housing cover (L-shaped) - Right side cover (Cap) for the power switch housing (for enclosing the power switch)
6	5041-1203	Power switch keycap (White)

* Artikel sind obsolete

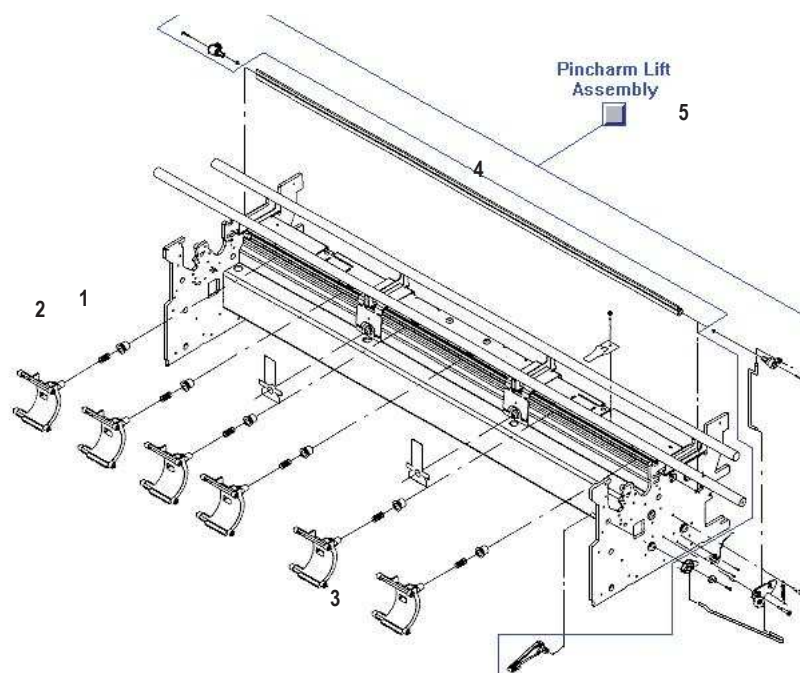
Pen Carriage Assembly



Ref	Part Number	Description
1	C4708-69113*	Pen carriage assembly - Drafting 'Head' for the plotter (holds tri-color and one black ink cartridges) - Front bushing is included and cannot be ordered separately
2	C3195-40027	Ribbon cable clamp (bottom half) - Secures the trailing cable to the top of the carriage assembly
3	C3195-40026	Ribbon cable clamp (top half) - Secures the trailing cable to the top of the carriage assembly
4	C2858-40017*	Rear slider rod bushing (Spring loaded) - Slides into the rear center of the carriage assembly
5	C1633-80014	Compression spring - For the rear bushing on the carriage
6	C2858-60010*	Linear encoder IC - Detects carriage position as it moves along encoder strip - Attaches to right side of carriage assembly
7	C4705-60082	Carriage belt (D-size) - Long/wide belt attached to the carriage (D-Size, 24-Inch)
	C4706-60082	Carriage belt (E-size) - Long/wide belt attached to the carriage (E-Size, 36-Inch)

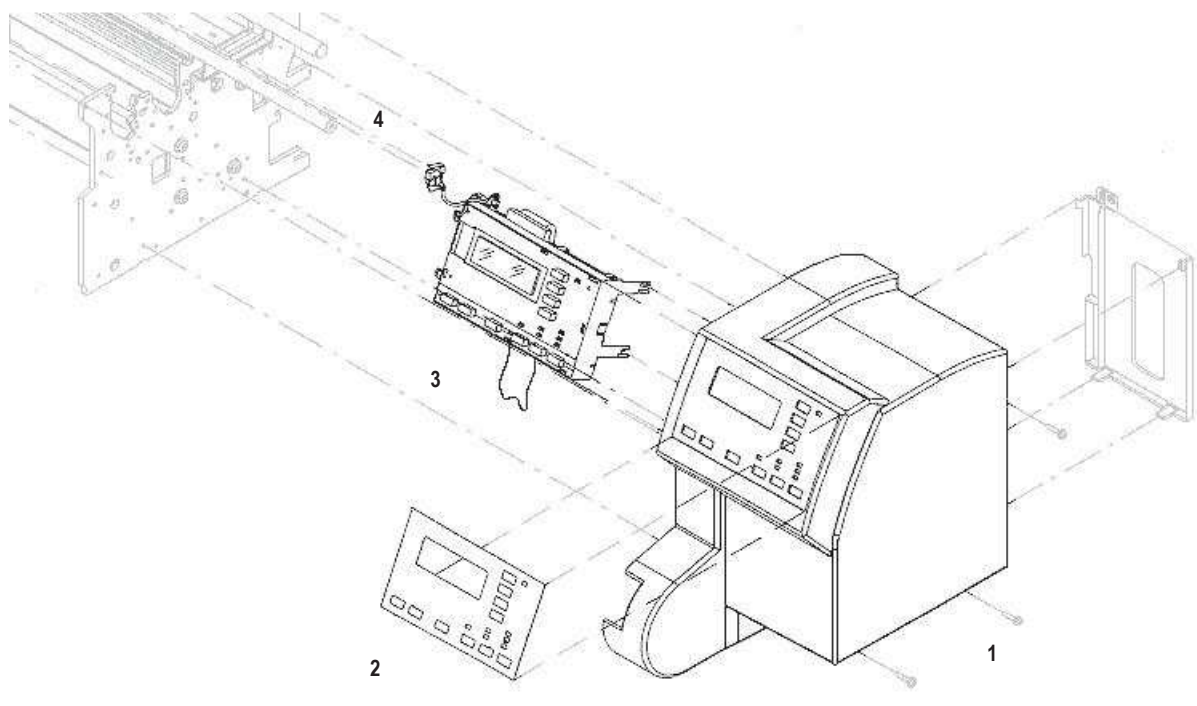
* Artikel sind obsolete

Pincharms



Ref	Part Number	Description
1	C1633-40082	Pinch arm spring retaining bushing - Bushing - Retains spring on shaft of pinch arm assembly
2	C1633-80005	Compression spring - Installed between pinch arm assembly and bushing
3	C4705-60091	Pinch arm assembly - Curved black plastic plate with four small rollers - Does NOT include spring or bushing - (Four used)
4	C2847-20005	Pinch arm bar cam (D-size) - Long rod from left to right side of printer - Used to lift the pinch arms
	C1633-20012	Pinch arm bar cam (E-size) - Long rod from left to right side of printer - Used to lift the pinch arms
5	C3195-60166*	Pinch arm lift assembly - Does NOT include pinch arm bar cam - Includes pinch wheel manual lift handle, spring, sensor, rocker plate, cam drive, cam journals, wire linkages, nuts, screws, and washer

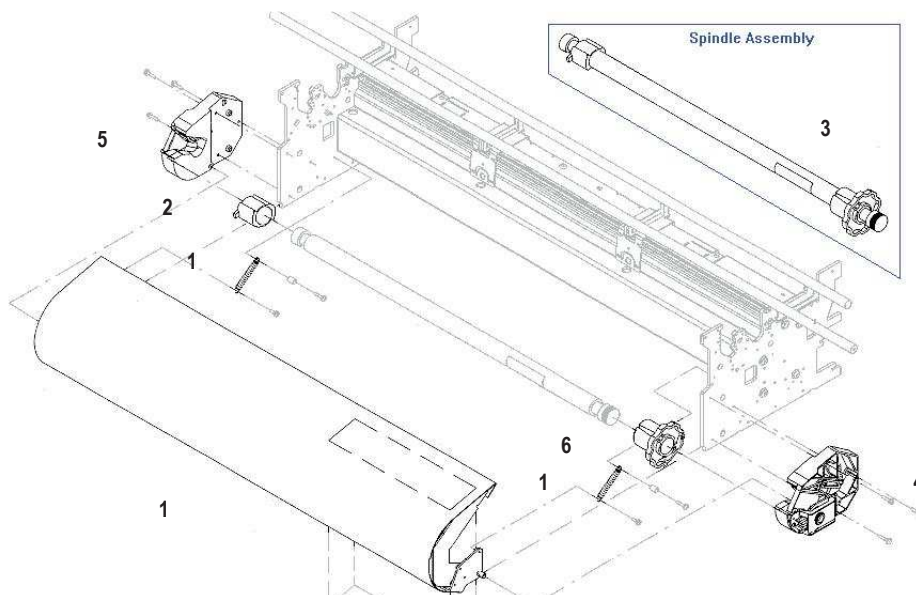
Right End Cover



* Artikel sind obsolete

Ref	Part Number	Description
1	C4705-60114	Right end cover - Has cut outs for the control panel buttons lights and display - NOT include an overlay
2	C3195-60041	Front panel overlay (Self adhesive), English
	C3195-60042	Front panel overlay (Self adhesive), Korean
	C3195-60043*	Front panel overlay (self adhesive), Taiwan
	C3195-60044	Front panel overlay (Self adhesive), German
	C3195-60045*	Front panel overlay (Self adhesive), French
	C3195-60046	Front panel overlay (Self adhesive), Spanish
	C3195-60047*	Front panel overlay (Self adhesive), Italian
	C3195-60048*	Front panel overlay (self adhesive), Janese
	C3195-60049*	Front panel overlay (Self adhesive), Portuguese
	C3195-60050*	Front panel overlay (Self adhesive), Chinese
3	C3195-60038*	Front (Control) panel and cable assembly - Includes function buttons and display
4	C3195-60015	Sensor assembly - Sensor assembly (for lift-up window) - On right side of plotter

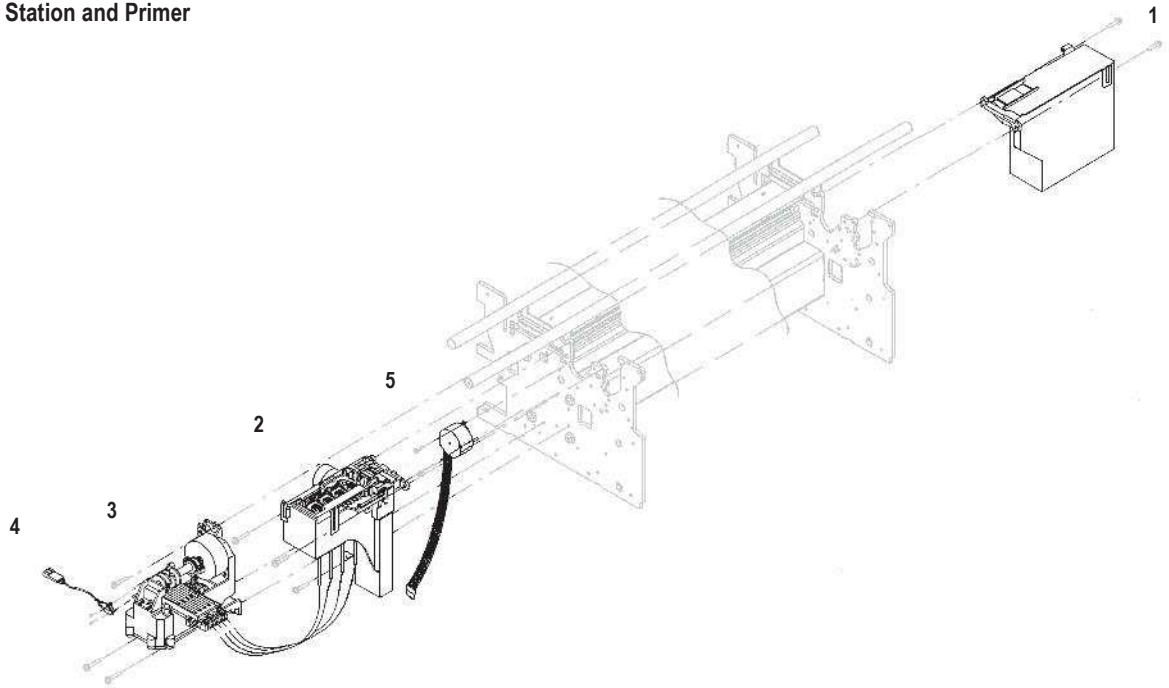
Rollfeed



Ref	Part Number	Description
1	C4705-60084	Rollfeed access cover - Opens forward to allow access to paper spindle assembly - Includes cover and springs (D-Size, 24-Inch)
	C4706-60084*	Rollfeed access cover - Opens forward to allow access to paper spindle assembly - Includes cover and springs (E-Size, 36-Inch)
2	C2858-40043	Spindle end cap - Small core spacer - Removes for loading the media roll - Removes for loading the media roll
3	C2847-60093	Rollfeed spindle rod assembly (D-size) - Includes spindle and end caps
	C3172-60003	Rollfeed spindle rod assembly (D-size) - Includes spindle and end caps - Special unit for use in China
	C3172A*	D/A1 rollfeed spindle rod assembly for DesignJet 6xx/7xx - Includes spindle and end caps (D-Size)
	C2848-60044*	Rollfeed spindle rod assembly (E-size) - Includes spindle and end caps
	C3173-60003	Rollfeed spindle rod assembly (E-size) - Includes spindle and end caps - Special unit for use in China
	C3173A*	D/A1 rollfeed spindle rod assembly for DesignJet 6xx/7xx - Includes spindle and end caps (E-Size)
4	C4704-60199	Brake/housing assembly (on right side) - Accepts the flange end of the spindle rod assembly - Includes the 2 housing pieces, 2 brake shoes, brake gear, brake lever, and springs
5	C4704-60082	Housing assembly (on left side) - Accepts the left side (end with smaller end cap) of the paper spindle assembly
6	C3172-40006	Spindle end cap (large) - Located on right end of the spindle rod

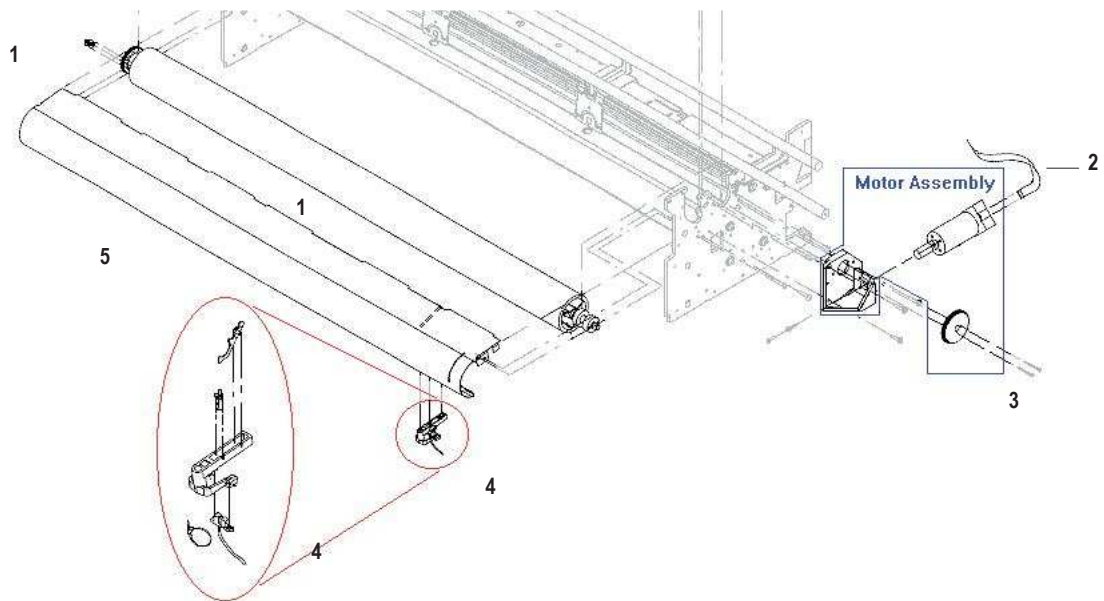
* Artikel sind obsolete

Service Station and Primer



Ref	Part Number	Description
1	C3195-60027	Spittoon assembly - Contains absorbers which hold excess ink from cartridges - Mounts on right side of plotter
2	C3195-60165*	Service Station
3	C4705-60109	Primer assembly - Mounts under the service station assembly on the left side of the plotter
4	C2858-60007	Optical primer sensor - Optical primer sensor - Mounts to primer Assembly - Used to determine initial position of the primer assembly cam
5	C3195-60009*	Bail stepper motor - Used to drive the bail assembly - Mounts on left side plate of plotter

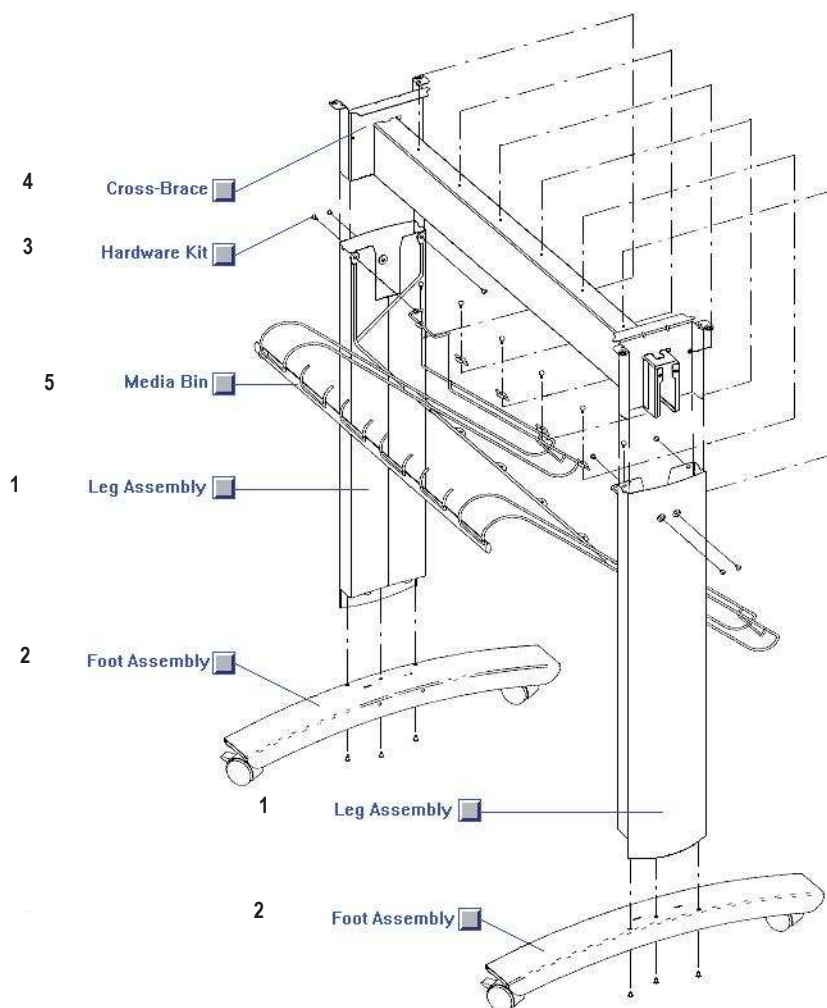
X-Axis Drive



* Artikel sind obsolete

Ref	Part Number	Description
1	C4699-60042	Paper drive (platen) roller assembly - Long gear driven roller - Includes roller and mark encoder - Attached to left end (D-Size, 24-Inch)
	C4700-60042	Paper drive (platen) roller assembly - Long gear driven roller - Includes roller and mark encoder - Attached to left end (E-Size, 36-Inch)
2	C3195-60102	Ribbon cable with ferrite - Has 5-pin (F) connectors - 16.5cm (6.5in) long - From main logic board to paper (X-Axis) drive motor
3	C4705-60068*	Paper (X-axis) drive motor (includes helical drive gear - NOTE: motor and gear are only sold as a set - Attaches to right side of plotter chassis
4	C3190-60140*	Media sensor mechanical assembly - Media sensor mechanical assembly - Includes, edge measuring and secondary levers, media sensor and holder
5	C3195-60173	Entry platen assembly - Cover/guide that is next to the paper drive (platen) roller (D-Size, 24-Inch)
	C3196-60173	Entry platen assembly - Cover/guide that is next to the paper drive (platen) roller (E-Size, 36-Inch)

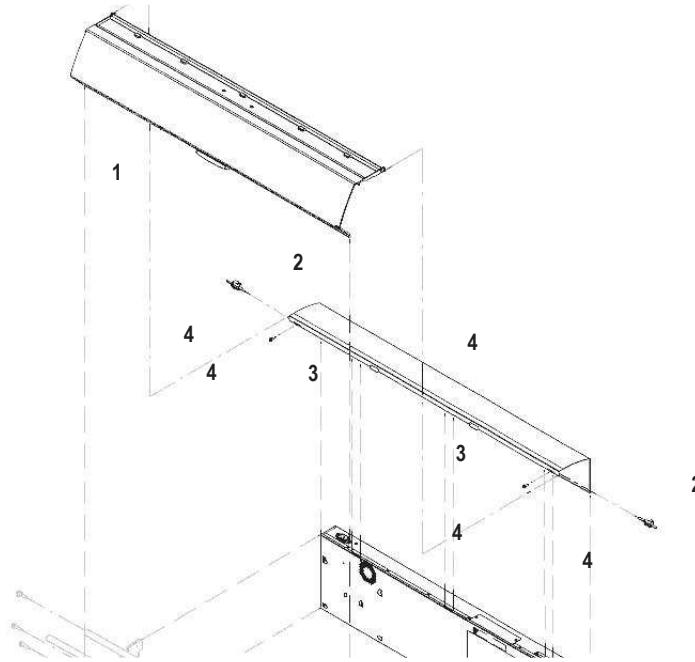
Stand



Ref	Part Number	Description
1	C4696-60007*	Leg assembly - Side support for the plotter - Does NOT include the foot assembly - (Two used)
2	C4696-60006	Foot assembly (includes casters) - Mounts to the bottom of the plotter stand legs (two used) - When replacing feet (new style) you must order new style legs (C4696-60007)
3	C4704-60095	Hardware kit for printer stand - Includes screwdriver, screws, washers, and media bin retaining clips
4	C3192-60001	Cross-brace - Brace that connects and supports the two stand legs
5	C4705-60097	Media bin - Wire rack that mounts to the plotter stand legs and cross brace (D-Size, 24-Inch)
	C4706-60097	Media bin - Wire rack that mounts to the plotter stand legs and cross brace (E-Size, 36-Inch)

* Artikel sind obsolete

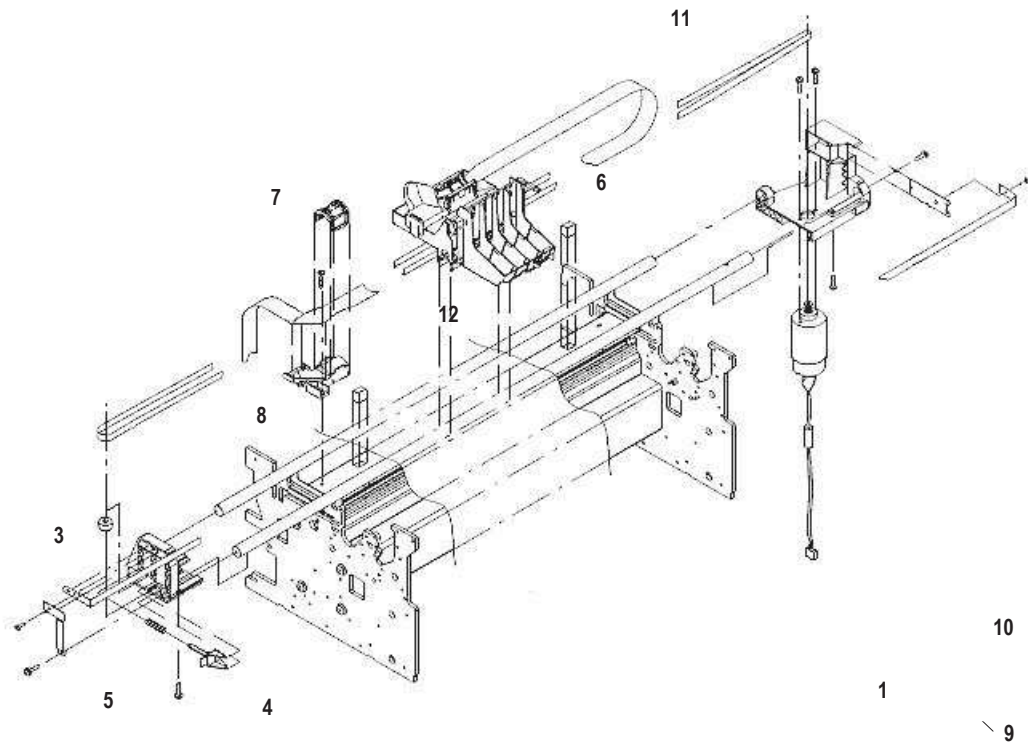
Windows and back Cover



Ref	Part Number	Description
1	C4705-60087	Lift-up viewing window - Located on top of chassis (D-Size, 24-Inch)
	C4706-60087*	Lift-up viewing window - Located on top of chassis (E-Size, 36-Inch)
2	C3195-40060	Center cover latch - Center cover latch - Two ,T' shaped latches are used to connect ends of center cover to left and right end covers
3	0624-0771	Plastite screw (threaded insert mold-in, Textron K40) - M4.0 x 0.7, 20mm long, Torx T15 - Attaches ,T' shaped latches to center cover
4	C3195-60039	Cover assembly - Metal center cover that lift-up viewing window mounts to - Includes ,T' shaped latches and mounting screws (D-Size, 24-Inch)
	C4705-60088	Unicover assembly - Plastic cover which is used in place of the center cover, electrical cover assembly, SIMM cover, and SIMM barrier (D-Size, 24-Inch)
	C3196-60039	Cover assembly - Metal center cover that lift-up viewing window mounts to - Includes ,T' shaped latches and mounting screws (E-Size, 36-Inch)
	C4706-60088*	Unicover assembly - Plastic cover which is used in place of the center cover, electrical cover assembly, SIMM cover, and SIMM barrier (E-Size, 36-Inch)

* Artikel sind obsolete

Y-Axis Drive



Ref	Part Number	Description
1	C3195-40017*	Carriage Motor bracket
2	C3195-60112*	Carriage drive motor assembly - Includes motor and Cable - (Y-axis motor) - Motor mounts to the bracket on right side of plotter
3	C3195-60169*	Idler pulley - Applies tension to the left end of the carriage belt
4	C3195-40039	Pulley wedge tensioner - For carriage (Y-axis) belt tension
5	C3195-80002	Compression spring - For the pulley wedge - Applies tension to the carriage belt
6	C3195-80009	Carriage Assembly trailing Cable Two ribbon cable bundled together - 1.8m (6.0ft) long - from carriage assembly to main logic board
7	C3195-40024	Cable holder (Small U-Shaped piece on top) - One of two pieces that hold the trailing cable to the main chassis
8	C3195-40025	Cable holder (Large piece on bottom) - One of two pieces that hold the trailing cable to the main chassis
9	C4713-60098	Encoder Strip assembly (D-Size) - Includes encoder strip and encoder strip spring - Connects from left to right side of plotter
	C4714-60098	Encoder Strip assembly (E-Size) - Includes encoder strip and encoder strip spring - Connects from left to right side of plotter
10	C4699-00016	Encoder spring - Mounted under encoder strip on right encoder bracket
11	C4705-60082	Carriage belt (D-Size) - Long/wide belt attached to the carriage
	C4706-60082	Carriage belt (E-Size) - Long/wide belt attached to the carriage
12	C4708-69113	Pen carriage assembly - Drafting Head for the plotter (holds tri-color and one black ink cartridges) - Front bushing is included and cannot be ordered separately