



HSS

HOLLOW STRUCTURAL SECTIONS



Clinton Presidential Library,
Little Rock, Arkansas



Peak 2 Peak Gondola,
Whistler, British Columbia



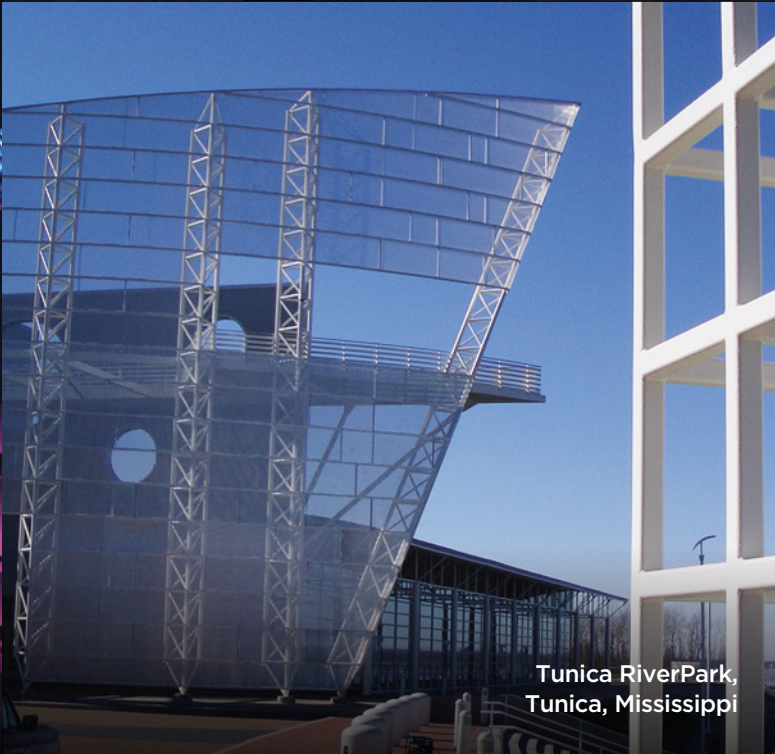
University of Waterloo,
Waterloo, Ontario



One Vanderbilt,
New York, New York



SkyDance Bridge,
Oklahoma City, Oklahoma



Tunica RiverPark,
Tunica, Mississippi



Big River Steel,
Osceola, Arkansas



Griffiths Pedestrian Bridge,
Burnaby, British Columbia



Hartsfield-Jackson
Atlanta International Airport,
Atlanta, Georgia

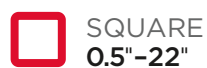
THE VERY BEST IN HSS

Founded in 1984, Atlas Tube is the leading North American producer of hollow structural sections, or HSS. Today we're known across the continent for our HSS capabilities, the quality and breadth of our product lines, our exceptional technical expertise, and our commitment to customer service.

WHY ATLAS TUBE?

- Exceptional manufacturing flexibility
- Shortest cycle times in the industry
- Breadth of value-added services
- Largest HSS size ranges
- Exclusive manufacturer of Jumbo HSS

OUR SIZE RANGE



SQUARE
0.5"-22"



RECTANGLE
1.5" x 1" - 34" x 10"

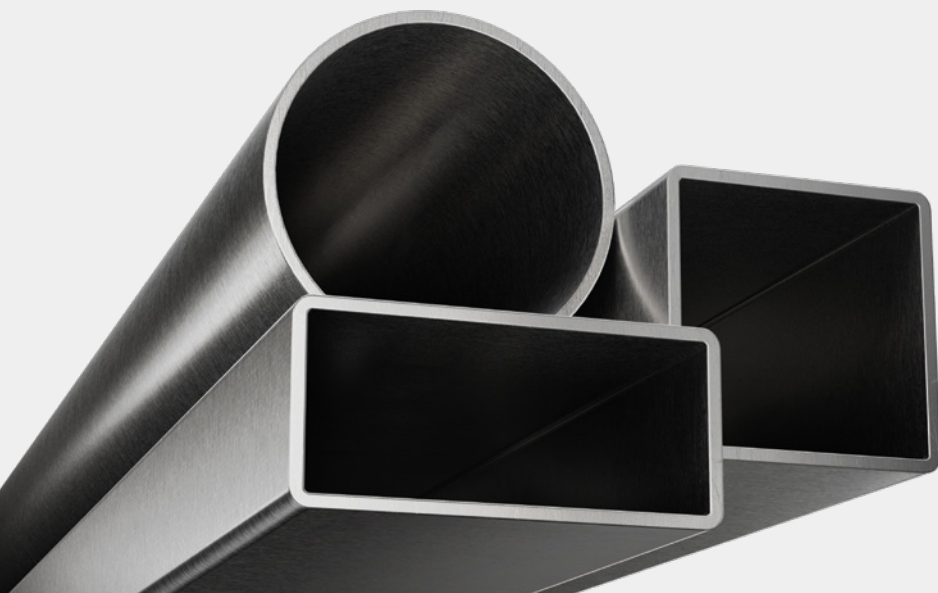


ROUND
0.84"-28"

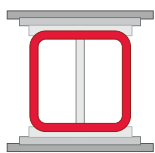
WALL THICKNESS: 0.065"-1" | MILL CUT LENGTHS: 18'-125'

BUILDING THE FUTURE WITH HSS

Hollow structural sections give architects, engineers and fabricators powerful tools to create the landmarks and infrastructure of tomorrow. The unique properties of HSS can help solve a variety of aesthetic and structural efficiency problems, making them attractive for projects big and small.

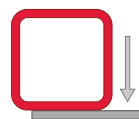


- High strength-to-weight ratios
- Uniform strength
- Cost-effective
- Aesthetically appealing
- Highly recyclable
- Easily coated or painted



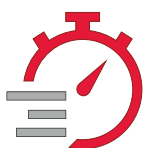
MORE STRENGTH, LESS STEEL

HSS offer excellent strength-to-weight ratios, allowing for greater axial capacity, more efficient utilization of the cross section and longer unbraced spans. That means they provide exceptional structural support, often with less total steel required to do the job.



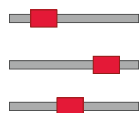
TOP-FLIGHT TORSIONAL RESISTANCE

HSS deliver exceptional torsional resistance, 200 times greater than that of an open section. That makes them an ideal choice for curved members, edge members that support eccentric loads and any other members with high torsional loads.



ROLLED RIGHT NEXT DOOR

Atlas Tube's five state-of-the-art facilities have the shortest cycle times and fastest order turnaround in the industry. We roll more than 1.2 million tons a year at our strategically located plants in Arkansas, Illinois, Alabama, Michigan and Ontario.



HOLLOW SECTIONS MADE TO ORDER

To minimize cost, waste and lost time, Atlas Tube can deliver product prepared to your specifications and ready for use upon delivery. A wide variety of services are available, including ID flash removal, specialty steel chemistries and thermal stress relief.



DEDICATED TO SUSTAINABILITY

We care about bringing manufacturing back to America, but we also care about keeping the country clean for future generations. That's why we work continuously to find new ways to recycle, improve manufacturing efficiency, and reduce our use of harmful chemicals and solvents.

REUSE, RECYCLE... REBUILD

Steel is the most recycled material on the planet, and between 60 and 80 million tons of steel are recycled each year in North America. Most structural steel in North America, including the majority of HSS, is produced from recycled steel.

FINDING NEW EFFICIENCIES

Of the 3,500 steel grades in use today, 75% did not exist 20 years ago, and modern grades have led to cleaner, more-efficient steel production. In fact, workforce productivity is nearly 10 times higher than it was in 1980, requiring just 1.5 worker-hours per ton.¹

DOMESTIC MEANS CLEANER

The American steel industry is the cleanest and most energy-efficient of the world's leading steel industries. Of the seven leading steel-producing countries, the U.S. has the lowest CO₂ emissions per ton of steel produced, as well as the lowest energy intensity.²

1. Wiseman, Paul. "Correction: Trump Tariffs-Steel Industry story." Associated Press, 2018.

<https://apnews.com/article/north-america-oh-state-wire-donald-trump-pa-state-wire-business-cae426730cd74e64932e4be7fa5cdebc>

2. Hasanbeigi, Ali, and Cecilia Springer. "How Clean is the U.S. Steel Industry?" Global Efficiency Intelligence, 2019.

<https://www.globalefficiencyintel.com/us-steel-industry-benchmarking-energy-co2-intensities>



MEET OUR NEWEST MILL

Our new facility in Blytheville, Arkansas, is the result of decades of experience in the steel industry, bringing together state-of-the-art technology and unrivaled domestic manufacturing capabilities. Spanning 515,000 square feet, the new facility is the largest continuous electric resistance weld (ERW) tube mill in the world, rolling the biggest hollow sections available in North America.

HIGH-TECH HSS

- New welding technology lets us shape 1"-thick sections.
- The line feeds into a fully automated warehouse, making inventory management a cinch.
- Quick-change technology enables us to change out rollers and stands in less than 60 minutes.

ATLAS TUBE JUMBO HSS

MADE IN AMERICA

SUPPORTING POSSIBILITIES

WITH THE WORLD'S LARGEST HSS

SHORTEST LEAD TIMES

With production cycles of just 2-4 weeks, our lead times are the shortest in the industry. And our North American network of service center partners are stocking our Jumbo HSS sizes, too, making them even easier to source for immediate use.

UNLIMITED APPLICATIONS

Jumbo HSS are perfect for any projects where efficiency or aesthetics are a priority. Proven applications include bridges, warehouses, airports, stadiums, multistory buildings, and DOT signs and structural supports.

Learn more at atlastube.com/jumbo



HSS AVAILABILITY CHART – SQUARES

OD	NOMINAL WALL THICKNESS																
	in.	.065	.083	.100	.120	.125	.134	.188	.238	.250	.313	.375	.500	.625	.750	.875	1.000
0.5 x 0.5	0.385	–	–	–	–	–	–	–	–	–	–	–	–	–	–	–	–
0.75 x 0.75	0.605	0.753	–	1.028	–	–	–	–	–	–	–	–	–	–	–	–	–
1 x 1	0.827	1.035	1.140	1.437	1.488	–	–	–	–	–	–	–	–	–	–	–	–
1.25 x 1.25	1.048	1.317	1.480	1.846	1.912	–	–	–	–	–	–	–	–	–	–	–	–
1.5 x 1.5	1.270	1.600	1.820	2.252	2.200	2.487	3.040	–	4.250	–	–	–	–	–	–	–	–
2 x 2	1.712	2.164	2.580	3.068	3.060	3.401	4.320	–	5.410	–	–	–	–	–	–	–	–
2.125 x 2.125	–	–	–	–	3.266	3.474	4.647	–	–	–	–	–	–	–	–	–	–
2.5 x 2.5	–	2.670	–	3.760	3.900	4.312	5.590	6.830	7.110	8.460	–	–	–	–	–	–	–
3 x 3	–	–	–	4.580	4.750	5.222	6.870	8.665	8.810	10.580	12.170	–	–	–	–	–	–
3.5 x 3.5	–	–	–	5.520	5.610	5.980	8.150	10.070	10.510	12.700	14.720	–	–	–	–	–	–
4 x 4	–	–	–	6.330	6.460	6.890	9.420	–	12.210	14.830	17.270	21.630	–	–	–	–	–
4.5 x 4.5	–	–	–	–	7.310	7.810	10.700	–	13.910	16.960	19.820	24.030	–	–	–	–	–
5 x 5	–	–	–	–	8.160	8.720	11.970	–	15.620	19.080	22.370	28.430	–	–	–	–	–
6 x 6	–	–	–	–	9.860	–	14.530	–	19.020	23.334	27.480	35.240	42.300	–	–	–	–
7 x 7	–	–	–	–	–	–	17.080	–	22.420	27.590	32.580	42.050	50.810	–	–	–	–
8 x 8	–	–	–	–	–	–	19.630	–	25.820	31.840	37.690	48.850	59.320	–	–	–	–
9 x 9	–	–	–	–	–	–	22.180	–	29.230	36.100	42.790	55.660	67.820	–	–	–	–
10 x 10	–	–	–	–	–	–	24.730	–	32.630	40.350	47.900	62.460	76.330	89.500	–	–	–
12 x 12	–	–	–	–	–	–	–	–	39.430	48.860	58.100	76.070	93.340	109.910	125.790	–	–
14 x 14	–	–	–	–	–	–	–	–	–	57.360	68.310	89.680	110.360	130.330	149.610	168.180	–
16 x 16	–	–	–	–	–	–	–	–	–	65.870	78.520	103.300	127.370	150.750	173.430	195.400	–
18 x 18	–	–	–	–	–	–	–	–	–	–	88.730	116.910	144.290	171.160	197.240	222.630	–
20 x 20	–	–	–	–	–	–	–	–	–	–	98.940	130.520	161.400	191.580	221.060	249.850	–
22 x 22	–	–	–	–	–	–	–	–	–	–	–	144.130	178.410	212.000	244.900	277.070	–

- Rolled every 2-6 weeks.
- Rolled every 6-12 weeks; some sizes may be subject to accumulation.
- Not rolled regularly; sizes subject to minimum orders. Inquire.

Includes ASTM A513, ASTM A1085, ASTM A500, ASTM A252 and CSA G40. Please contact Atlas Tube for additional details on specifications or if the size you are looking for is not listed.

For rectangular sections, the weld seam is located on the first dimension listed for each size.

HSS AVAILABILITY CHART — RECTANGLES

OD	NOMINAL WALL THICKNESS																
	in.	.065	.083	.100	.120	.125	.134	.188	.238	.250	.313	.375	.500	.625	.750	.875	1.000
1.5 x 0.75	—	1.120	—	1.520	—	—	—	—	—	—	—	—	—	—	—	—	—
1.5 x 1	1.048	1.317	—	1.844	—	—	—	—	—	—	—	—	—	—	—	—	—
2 x 1	1.270	1.600	1.904	2.252	2.200	2.330	3.040	—	—	—	—	—	—	—	—	—	—
2 x 1.5	—	—	—	—	2.630	2.790	3.680	—	—	—	—	—	—	—	—	—	—
2 x 3	—	—	—	—	3.900	4.160	5.590	6.830	7.110	—	—	—	—	—	—	—	—
2 x 4	—	—	—	—	4.750	5.070	6.870	8.440	8.810	—	—	—	—	—	—	—	—
2.5 x 1	—	—	—	—	2.630	2.790	3.680	—	—	—	—	—	—	—	—	—	—
2.5 x 1.5	1.670	2.164	2.580	3.070	3.060	3.401	4.320	—	5.410	—	—	—	—	—	—	—	—
2.5 x 2	—	—	—	3.350	3.480	3.700	4.960	—	6.260	—	—	—	—	—	—	—	—
3 x 1	1.712	2.164	—	3.070	3.060	3.250	4.320	—	—	—	—	—	—	—	—	—	—
3 x 1.5	—	—	—	3.476	3.480	3.700	4.960	—	6.260	—	—	—	—	—	—	—	—
3 x 2	—	2.670	—	3.760	3.900	4.160	5.590	6.830	7.110	8.450	—	—	—	—	—	—	—
3 x 2.5	—	—	—	—	4.330	4.610	6.230	—	7.960	—	—	—	—	—	—	—	—
3 x 5	—	—	—	—	6.460	6.890	9.420	—	12.210	—	—	—	—	—	—	—	—
3.5 x 1.5	—	—	—	—	3.900	4.160	5.590	—	—	—	—	—	—	—	—	—	—
3.5 x 2	—	—	—	—	4.330	4.610	6.230	—	7.960	—	—	—	—	—	—	—	—
3.5 x 2.5	—	—	—	—	4.750	5.070	6.870	—	8.810	—	—	—	—	—	—	—	—
4 x 1.25	—	—	—	4.088	—	—	—	—	—	—	—	—	—	—	—	—	—
4 x 1.5	—	—	—	—	4.330	4.610	6.230	—	—	—	—	—	—	—	—	—	—
4 x 2	—	—	—	4.580	4.750	5.070	6.870	8.450	8.810	10.580	12.170	—	—	—	—	—	—
4 x 2.5	—	—	—	—	5.180	5.530	7.510	—	9.660	—	—	—	—	—	—	—	—
4 x 3	—	—	—	5.520	5.610	5.980	8.150	10.070	10.510	12.700	14.720	—	—	—	—	—	—
4.5 x 3	—	—	—	—	6.030	6.130	8.780	—	11.360	—	—	—	—	—	—	—	—
5 x 2	—	—	—	5.520	5.610	5.980	8.150	10.070	10.510	12.700	14.720	—	—	—	—	—	—
5 x 2.5	—	—	—	—	6.030	6.440	8.780	—	11.360	—	—	—	—	—	—	—	—
5 x 3	—	—	—	6.330	6.460	6.890	9.420	—	12.210	14.830	17.270	21.630	—	—	—	—	—
5 x 4	—	—	—	—	7.310	7.810	10.700	—	13.910	16.960	19.820	25.030	—	—	—	—	—
6 x 2	—	—	—	6.330	6.460	6.890	9.420	—	12.210	14.830	17.270	—	—	—	—	—	—
6 x 3	—	—	—	—	7.310	7.810	10.700	—	13.910	16.960	19.820	25.030	—	—	—	—	—
6 x 4	—	—	—	—	8.160	8.720	11.970	—	15.620	19.080	22.370	28.430	—	—	—	—	—
6 x 5	—	—	—	—	9.010	9.630	13.300	—	17.320	21.220	24.930	31.840	—	—	—	—	—
7 x 3	—	—	—	—	8.160	8.720	11.970	—	15.620	19.080	22.370	28.430	—	—	—	—	—
7 x 4	—	—	—	—	9.010	9.630	13.300	—	17.320	21.220	24.930	31.840	—	—	—	—	—
7 x 5	—	—	—	—	9.860	—	14.530	—	19.020	23.340	27.480	35.240	—	—	—	—	—
8 x 2	—	—	—	—	8.160	8.720	11.970	—	15.620	19.080	22.370	—	—	—	—	—	—
8 x 3	—	—	—	—	9.010	9.630	13.300	—	17.320	21.220	24.930	31.840	—	—	—	—	—
8 x 4	—	—	—	—	9.860	—	14.530	—	19.020	23.340	27.480	35.240	42.300	—	—	—	—
8 x 5	—	—	—	—	10.710	11.450	15.800	—	20.720	25.460	30.030	38.610	—	—	—	—	—
8 x 6	—	—	—	—	—	—	17.080	—	22.420	27.590	32.580	42.050	50.810	—	—	—	—
9 x 5	—	—	—	—	—	—	17.080	—	22.420	27.590	32.580	42.050	50.810	—	—	—	—
9 x 7	—	—	—	—	—	—	19.630	—	25.820	31.840	37.690	48.850	59.320	—	—	—	—
10 x 2	—	—	—	—	—	—	14.530	—	19.020	23.340	27.480	—	—	—	—	—	—
10 x 3	—	—	—	—	10.710	11.450	15.800	—	20.720	25.460	30.030	—	—	—	—	—	—
10 x 3.5	—	—	—	—	11.130	11.910	16.440	—	21.570	26.530	31.310	—	—	—	—	—	—
10 x 4	—	—	—	—	—	—	17.080	—	22.420	27.590	32.580	42.050	50.810	—	—	—	—
10 x 5	—	—	—	—	—	—	18.350	—	24.120	29.720	35.130	45.450	55.060	—	—	—	—
10 x 6	—	—	—	—	—	—	19.630	—	25.820	31.840	37.690	48.850	59.320	—	—	—	—
10 x 8	—	—	—	—	—	—	22.180	—	29.230	36.100	42.790	55.660	67.820	—	—	—	—
12 x 3	—	—	—	—	—	—	18.350	—	24.120	29.720	35.130	—	—	—	—	—	—
12 x 4	—	—	—	—	—	—	19.630	—	25.820	31.840	37.690	48.850	59.320	—	—	—	—
12 x 6	—	—	—	—	—	—	22.180	—	29.230	36.100	42.790	55.660	67.820	—	—	—	—
12 x 8	—	—	—	—	—	—	24.730	—	32.630	40.350	47.900	62.460	76.330	89.500	—	—	—
12 x 10	—	—	—	—	—	—	—	—	36.030	44.670	53.000	69.270	84.840	—	—	—	—
14 x 4	—	—	—	—	—	—	22.180	—	29.230	36.100	42.790	55.660	67.820	—	—	—	—
14 x 6	—	—	—	—	—	—	24.730	—	32.630	40.350	47.900	62.460	76.330	—	—	—	—
14 x 10	—	—	—	—	—	—	—	—	39.430	48.860	58.100	76.070	93.340	—	—	—	—
16 x 4	—	—	—	—	—	—	—	—	32.630	40.350	47.900	62.460	76.330	—	—	—	—
16 x 8	—	—	—	—	—	—	—	—	39.430	48.860	58.100	76.070	93.340	109.910	125.790	—	—
16 x 12	—	—	—	—	—	—	—	—	—	57.360	68.310	89.680	110.360	130.330	149.610	168.180	—
18 x 6	—	—	—	—	—	—	—	—	39.430	48.860	58.100	76.070	93.340	—	—	—	—
20 x 4	—	—	—	—	—	—	—	—	39.430	48.860	58.100	76.070	—	—	—	—	—
20 x 8	—	—	—	—	—	—	—	—	—	57.360	68.310	89.680	110.360	130.330	149.610	168.180	—
20 x 12	—	—	—	—	—	—	—	—	—	65.870	78.520	103.300	127.370	150.750	173.430	195.400	—
20 x 16	—	—	—	—	—	—	—	—	—	—	88.730	116.910	144.290	171.160	197.240	222.630	—
22 x 18	—	—	—	—	—	—	—	—	—	—	98.940	130.520	161.400	191.580	221.060	249.850	—
24 x 12	—	—	—	—	—	—	—	—	—	—	88.730	116.910	144.390	171.160	197.240	222.630	—
24 x 16	—	—	—	—	—	—	—	—	—	—	98.940	130.520	161.400	191.580	221.060	249.850	—
30 x 10	—	—	—	—	—	—	—	—	—	—	98.940	130.520	161.400	191.580	221.060	249.850	—
34 x 10	—	—	—	—	—	—	—	—	—	—	—	144.130	178.410	212.000	244.900	277.070	—

HSS AVAILABILITY CHART – ROUNDS (CONT.)

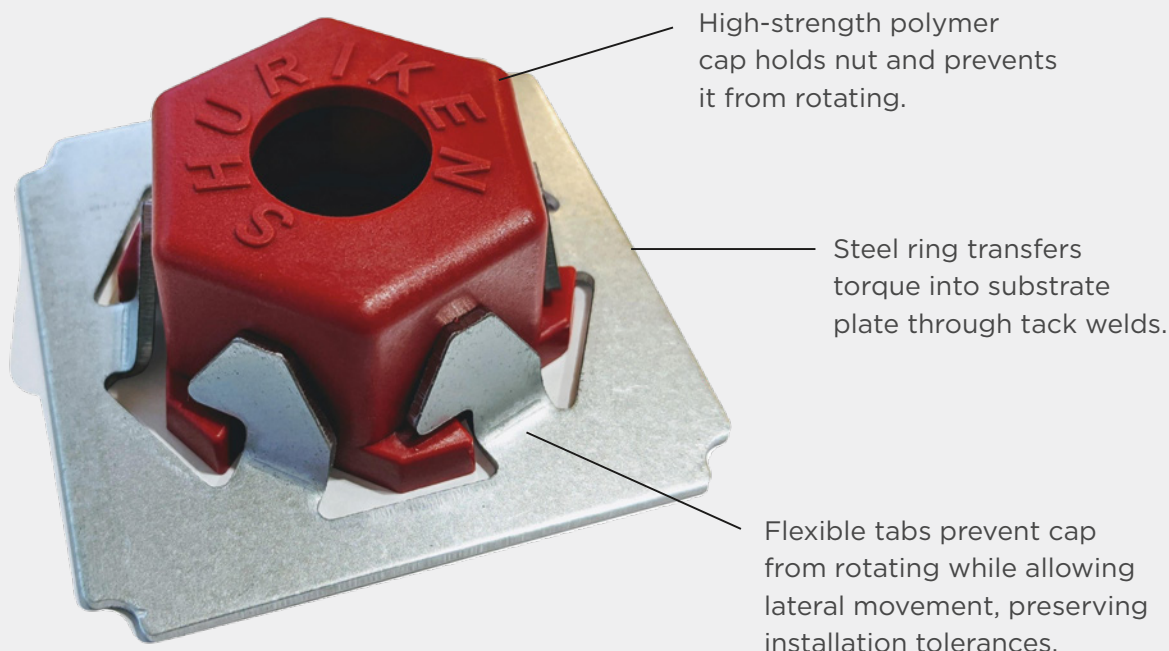
OD	NOMINAL WALL THICKNESS																		
	in.	.250	.258	.276	.280	.300	.313	.318	.322	.337	.342	.365	.375	.432	.500	.625	.750	.875	1.000
0.840	–	–	–	–	–	–	–	–	–	–	–	–	–	–	–	–	–	–	–
1.050	–	–	–	–	–	–	–	–	–	–	–	–	–	–	–	–	–	–	–
1.315	–	–	–	–	–	–	–	–	–	–	–	–	–	–	–	–	–	–	–
1.500	–	–	–	–	–	–	–	–	–	–	–	–	–	–	–	–	–	–	–
1.66	–	–	–	–	–	–	–	–	–	–	–	–	–	–	–	–	–	–	–
1.9	–	–	–	–	–	–	–	–	–	–	–	–	–	–	–	–	–	–	–
2.0	4.680	–	–	–	–	–	–	–	–	–	–	–	–	–	–	–	–	–	–
2.25	–	–	–	–	–	–	–	–	–	–	–	–	–	–	–	–	–	–	–
2.375	5.674	–	–	–	–	–	–	–	–	–	–	–	–	–	–	–	–	–	–
2.5	6.013	–	–	–	–	–	–	–	–	–	–	–	–	–	–	–	–	–	–
2.75	6.680	–	–	–	–	–	–	–	–	–	–	–	–	–	–	–	–	–	–
2.875	7.015	–	7.661	–	–	–	–	–	–	–	–	–	–	–	–	–	–	–	–
3.0	7.349	–	–	–	–	–	–	–	–	–	–	–	–	–	–	–	–	–	–
3.5	8.686	–	–	–	10.253	–	–	–	–	–	–	–	–	–	–	–	–	–	–
4.0	10.022	–	–	–	–	–	12.510	–	–	–	–	–	–	–	–	–	–	–	–
4.5	11.358	–	–	–	–	14.010	–	–	14.983	–	–	16.536	–	–	–	–	–	–	–
5.0	12.694	–	–	–	–	15.683	–	–	–	–	–	18.540	–	24.050	–	–	–	–	–
5.5	14.030	–	–	–	–	17.330	–	–	–	–	–	20.550	–	26.730	–	–	–	–	–
5.563	14.199	14.630	–	–	–	17.550	–	–	–	–	–	20.797	–	27.062	–	–	–	–	–
6.0	15.369	–	–	–	–	19.031	–	–	–	–	–	22.550	–	29.402	–	–	–	–	–
6.625	17.037	–	–	18.990	–	21.120	–	–	–	–	–	25.055	28.600	32.738	–	–	–	–	–
7.0	18.039	–	–	–	–	22.375	–	–	–	–	–	26.558	–	34.743	–	–	–	–	–
7.25	18.710	–	–	–	–	23.214	–	–	–	–	–	27.564	–	36.084	44.269	–	–	–	–
7.5	19.380	–	–	–	–	24.050	–	–	–	–	–	28.560	–	37.420	45.930	–	–	–	–
8.625	22.382	–	–	–	–	27.810	–	28.580	–	–	–	33.072	–	43.428	53.450	–	–	–	–
9.625	25.055	–	–	–	–	31.158	–	–	–	33.940	–	37.081	–	48.773	60.131	–	–	–	–
10.0	26.060	–	–	–	–	32.417	–	–	–	–	–	38.580	–	50.784	62.645	–	–	–	–
10.75	28.061	–	–	–	–	34.922	–	–	–	–	38.581	41.591	–	54.786	67.648	–	–	–	–
11.75	30.734	–	–	–	–	38.210	–	–	–	–	–	45.600	–	60.131	74.329	–	–	–	–
12.0	31.402	–	–	–	–	39.100	–	–	–	–	–	46.602	–	61.468	75.999	–	–	–	–
12.75	33.406	–	–	–	–	41.610	–	–	–	–	–	49.608	–	65.476	81.010	96.210	111.080	–	–
13.375	35.077	–	–	–	–	43.710	–	–	–	–	–	52.114	–	68.817	85.186	–	–	–	–
14.0	36.747	–	–	–	–	45.800	–	–	–	–	–	54.619	–	72.158	89.362	106.230	122.770	–	–
16.0	42.092	–	–	–	–	52.490	–	–	–	–	–	62.637	–	82.848	102.724	122.270	141.480	160.350	–
18.0	47.437	–	–	–	–	59.180	–	–	–	–	–	70.654	–	93.540	116.087	138.300	160.190	181.730	–
20.0	52.782	–	–	–	–	65.870	–	–	–	–	–	78.672	–	104.228	129.449	154.340	178.890	203.110	–
24.0	–	–	–	–	–	–	–	–	–	–	–	94.710	–	125.610	156.180	186.410	216.310	245.870	–
28.0	–	–	–	–	–	–	–	–	–	–	–	110.740	–	146.990	182.900	218.480	253.720	288.630	–

INTRODUCING

SHURIKEN™

SIMPLE BOLTED SPLICES

Shuriken is a revolutionary new system that makes it simple to perform field-bolted HSS column splices with standard A325 and A490 bolts. No need for field welds or complicated one-sided connectors — Shuriken mounts quickly in the shop and bolts go in quickly in the field, no special tools required.



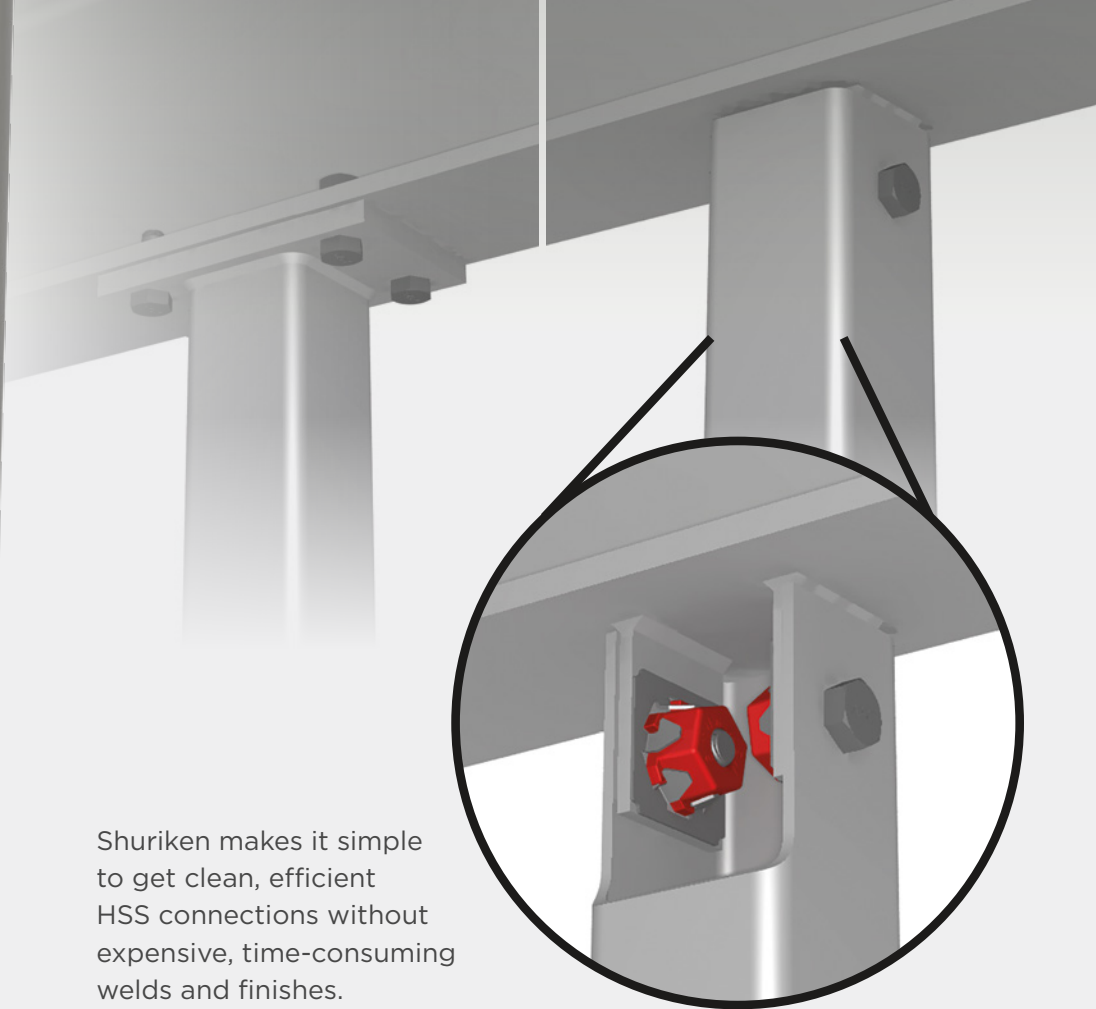
Want to learn more about Shuriken?

Get in touch with one of our structural engineers:

Ted Goldstein | Ted.Goldstein@atlastube.com

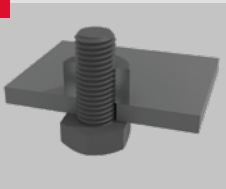
Brad Fletcher | Brad.Fletcher@atlastube.com

atlastube.com/shuriken



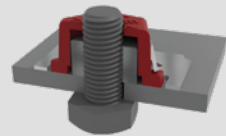
Shuriken makes it simple to get clean, efficient HSS connections without expensive, time-consuming welds and finishes.

1



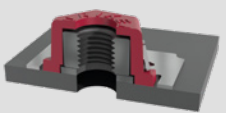
In the shop, insert a bolt and hand tighten it with a nut.

2



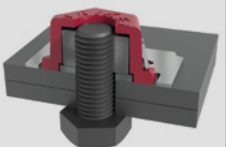
Place Shuriken over the nut and tack weld the steel ring to the substrate plate at all four corners.

3



Remove the bolt — the section is ready to go to the field.

4



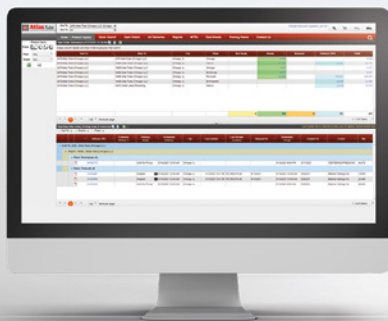
On-site, just insert a new bolt and tighten. Pretension can be verified with DTI washers.

WE SUPPORT YOU WITH MORE THAN JUST STEEL

Atlas Tube's HSS services reduce total construction project costs for labor, installation, shipping, administration and manufacturing. Atlas Tube HSS help you do more – in less time, with less steel and for less money.

OPTIMAL STOCKING

With Automated Inventory Management (AIM), you get the Atlas Tube HSS you need, when you need them, with auto-replenishments. With integrated production and logistics, AIM helps you turn inventory faster so you can free up cash and lower operating costs.



ATLAS SERVICE PORTAL

To improve ordering efficiency and scheduling accuracy, the Atlas e-commerce system uses EDI and SAP electronic information technology to let you view order and inventory status, test report data and more – all in real time.

WORLD'S BEST HSS DESIGN TOOLS

Atlas Tube gives you access to industry-leading HSS Design Tools from the Steel Tube Institute (STI) and the American Institute of Steel Construction (AISC). Our ongoing educational video series, "Designing With HSS," is available on our website and our YouTube page.





1855 East 122nd Street
Chicago, IL 60633

800.733.5683
info@atlastube.com
atlastube.com



1855 East 122nd Street
Chicago, IL 60633

P 800.733.5683

13101 Eckles Road
Plymouth, MI 48170

P 888.785.8823

6651 East State Hwy 137
Blytheville, AR 72315

P 800.838.2000

171 Cleage Drive
Birmingham, AL 35217

P 800.956.5440

200 Clark Street
Harrow, ON N0R 1G0

P 800.265.6912

info@atlastube.com
atlastube.com



Corporate Office

227 West Monroe Street
Suite 2600
Chicago, IL 60606

P 312.275.1600
info@zekelman.com
zekelman.com



Proudly made in the USA

All Atlas Tube products are made right here in the USA and support American steelworkers. Atlas Tube is proud to be a champion for American Metal—a national grass-roots initiative that supports the domestic steel industry and all the hard workers whose livelihoods depend on it.

To learn more about American Metal, visit chooseamericanmetal.com

About Atlas Tube

Atlas Tube, a division of Zekelman Industries, produces a wide range of steel tubular products and is the leading provider of hollow structural sections (HSS) in North America. Other offerings include HSS Design Tools and straight-seam electric resistance weld (ERW) pipe piling.

For more information, contact Atlas Tube at **800.733.5683** or info@atlastube.com. Or, visit our website at atlastube.com

Follow us on



twitter.com/atlastube



[linkedin.com/company/zekelman-industries](https://www.linkedin.com/company/zekelman-industries)



[youtube.com/ZekelmanIndustries](https://www.youtube.com/ZekelmanIndustries)



atlastube.com/atlas-observer

Additional resources for HSS applications can be found at aisc.org and cisc-icca.ca