



THE SPUR OF THE MOMENT

With more than 30 hunting attractions spread across the state, you have the freedom to act on your impulse to roam and get in touch with nature on any given weekend.



HUNTING

HUNTING

Set your sights on deer, wild turkey, quail and hogs in Oklahoma, where whether you are a bow hunter, a black powder fan or prefer gun season, the various ranches offer something for every hunting enthusiast.

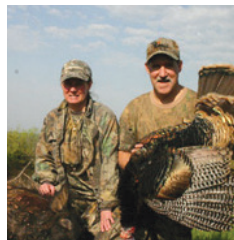
SWEEP THE PLAINS

Discover your hunting adventure using this handy reference.

- Find attractions near you on the fold-out map in the back.
- Read descriptions of attractions, listed alphabetically.
- The map and descriptions use a corresponding number system for cross-referencing.
- Plan your trip at OklahomaAgritourism.com. While you're there, sign up for our newsletter and connect with us on Facebook.
- Visit our blog, the Agritourist, to find cool links, articles about local attractions and more Oklahoma Agritourism insider info.

The Oklahoma Department of Wildlife Conservation is the government agency charged with managing fish and game species, and issuing hunting and fishing licenses across the state. All fees from hunting and fishing licenses go toward wildlife conservation in Oklahoma. More than 800 license dealers are spread across the state to make it easy, fast and simple to pick up a license.

Certain licenses are available online. For complete details, go to www.WildlifeDepartment.com.



1. Addison Ranch

While driving S. on I-35, take Exit 15 (Marietta/Ryan Exit). Go W. on Hwy. 32 approx. 10.9 mi. until you come to Pike Road. Turn R. (N.) on Pike Road. Go 2 mi. The road curves W. Follow the curve; the driveway is located on the N. side. Gated entry – must acquire entry code.

Located in Marietta near the Red River, the Addison Ranch provides the ideal habitat for huge white-tailed deer, an abundance of turkey, wild hog & ducks. With full-time guides always in the field trying to track the animals' every move, hunting at the Addison Ranch will be the perfect challenge. Beautiful wetlands & comfortable lodging facilities make this a hunting destination to remember!

www.addisonranch.com

7051 Pike Road
Burneyville, OK 73430
580-276-2439



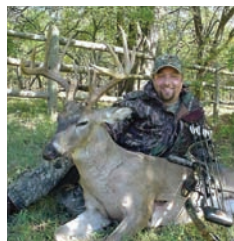
2. All About U Ranch & Outfitters

Call for driving directions.

White-tailed deer, wild hogs, ducks, geese, quail, pheasant & excellent fishing. Private cabins, families welcome, nightly rentals available. Call for reservations.

www.allabouturanch.com

Pauls Valley, OK 74872
405-268-2684



3. Big Prairie Bucks

Call for driving directions.

5,000 acres in SE Oklahoma w/thick creek bottoms, hardwood ridges & rolling native prairie, home to an abundance of wildlife. Guided white-tailed deer, wild hog & turkey hunts offered. Ranch house available for rent year-round to non-hunters. Call for availability & pricing.

195 N. Carr Pen Road
Atoka, OK 74525
800-654-1212



4. Buffalo Creek Lodge & Guide Service

From OKC: Take I-40 W. to Exit 20, then Hwy. 283 N. into Sayre (approx. 2 mi.). Proceed N. on Hwy. 283 to Hwy. 6 (approx. 8 mi.). Turn L. at the flashing red light and proceed W. on Hwy. 6 to Sweetwater (approx. 15 mi.). Turn L. (S.) at the flashing red light, go 1 mi. and turn L. (E.). Continue E. 1.5 mi. to Buffalo Creek Lodge.

Guided hunts for white-tailed deer, turkey, bobwhite quail & dove on more than 5,000 acres, w/pastures, creeks & ponds, scrub oak thickets & prairie. Fully equipped, rustic lodge. Activities include archery, sporting clay range, horseshoes, outdoor grill, pool table, dog kennels & fishing pond.

Sweetwater, OK 73666
580-821-1420

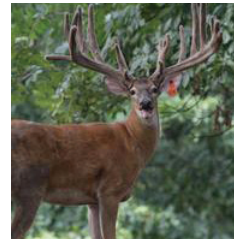




5. Buffalo Waller Hunting Preserve

The Buffalo Waller Ranch consists of 3 160-acre tracts that were part of the original Cherokee Strip land run in 1893. Come hunt where there are historic buffalo wallows, preserved original homestead sites & hand-dug water wells. See a stone quarry where many of the original stone posts were made in 1907 – guests can see original rocks with 1907 carved into them. An angler's delight with 2 catch-and-release ponds on site, which allow fish to get really big! Conveniently located just 2 miles from Kaw Lake. Bring your boat and have some fun! Bring a shotgun & shoot skeet, or upland game bird hunt on nearly 18,000 acres of core management land.

9250 E. Coleman Road
Ponca City, OK 74604
580-761-1382



9. Croton Creek Guest Ranch

From I-40, Exit 20, go N. on Hwy. 283, then W. on Hwy. 47 for 4 mi. Go 2 mi. N., then 2 mi. W.

Our 480-acre ranch in western Oklahoma's historic Black Kettle National Grasslands offers authentic Old West spirit, & the 20-room bunkhouse accommodates up to 70 people. Each room is individually furnished & named for an individual or tribe influential in the area. Bring your own horse for excellent trail riding.

Cheyenne, OK 73628
580-497-3960



6. Cabin at the Canyon

Take I-40 exit 115 W. of El Reno. Head N. 1/8 mi. to Route 66. Turn L. (W.) on Route 66 and go 3.5 mi. until you see a red farm gate on the S. side of the road. There will be a white mailbox with a key to the gate. Close the gate and follow the road past the cattle pens and barn to arrive at the cabin.

This cabin is newly decorated & complete with a large living room area, small office, kitchen (with supplies) & a Western-style dining room & two lofts, complete with either one queen bed or two twin beds. Friendly cattle and horses roam about the property. This generator-powered cabin, surrounded by 160 wooded acres and a canyon lake, is perfect for those who love the peace and fun of the outdoors.
www.billandclaras.com

El Reno, OK 73036
405-262-6656
405-650-6651



10. Flying J Hunt Club

The Flying J offers quail and European pheasant hunts in Northeast Oklahoma, with a lodge providing great accommodations, food and more right on the Grand River. Other activities are available for the whole family.
www.flyingjrancho.com

11641 E. Oklahoma 20
Spavinaw, OK 74366
918-824-5589

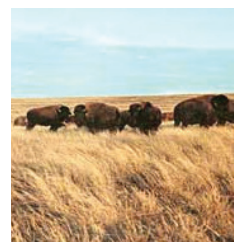


7. Chain Ranch

Call for driving directions.

Hunting/fishing on upland waterfowl & turkey habitat in NW Oklahoma & south-central Kansas. Amenities include 5-stand sporting clays range, 3 separate lodging facilities, detailed maps of hunting locations & more.
www.chainranch.com

Canton, OK 73724
405-669-1435

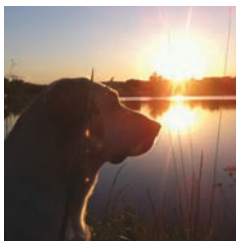


11. Flying W Guest Ranch

Take I-40 to Exit 34. Take Merritt Road to the stop sign at Route 66., then turn L. & go 0.25 mi. to the junction of Hwy. 66 & 6 N. Turn R. & go W. on Hwy. 6 N. Go 5 mi. to Road BK26, then turn R. & go 2.5 mi. N. Ranch will be on R. side of the road. Follow signs.

Horseback riding – bring your own horse or rent one – on working cattle ranch w/2,000 acres, beautiful scenery & abundant wildlife. Visit excavations at largest buffalo kill site in the southern plains. Lodging available in cabins; overnight camping is available. Restaurant is on-site. Call for details.
www.flyingwguestranch.com

10874 N. 1920 Road
Sayre, OK 73662
580-302-3319



8. Cherokee Spur Ranch

From I-44/Will Rogers Turnpike: Take exit 289 toward U.S. 60 and Vinita. Turn L. onto U.S. 60 and continue to the Hwy. 85 junction. Turn R. onto Hwy. 85 S. (aka S. 4510 Road). Turn L. onto E. 310 Road, then take the 1st L. onto S. 4250 Road. Follow 4250 until you see the red gates for Cherokee Spur Ranch.

We have taken quail management to new heights. Our approach is quite unique to the industry, and you, the hunter, are the beneficiary. Come to Cherokee Spur Ranch and experience the greatest quail hunting in the nation! Cherokee Spur is also available in the off season (May-September) for group events, such as family reunions and weddings.
www.cherokeespur.com

28597 S. 4520 Road
Afton, OK 74331
918-256-5400



12. Fortress of Faith Adventures

Take I-44 to Hwy. 70E, then go 17 mi. to Lone Star Road. Turn S. & go 0.5 mi. Or, take I-35 to Hwy. 70W, then go W. on Hwy. 70 to Lone Star Road & turn S. Business sits on W. side of the road.

Fortress of Faith has over 500 acres along the Red River. Activities include guided hunts on prime hunting plots (deer, hogs, turkey, dove, ducks & more), horseback riding, camping, fishing & kayaking. Bed & breakfast-style lodging, plus a cabin available. Church groups, retreats & family reunions welcome!
www.facebook.com/redriverlodging

198601 N. CR 2700
Hastings, OK 73548
940-733-5141





13. Gloss Mountain Outfitters

From Orienta: At the intersection of Hwy. 412 & Hwy. 60, go 19.7 mi. W. on Hwy. 412 to NS 236 (Clean Harbors sign). Turn S. & go 1.5 mi. to intersection of NS 236/EW 43. Turn W. & go 0.75 mi. at NS 235.3. Turn S. & go 1.4 mi. to ranch's main gate. From Bouse Junction: At the intersection of Hwy. 412 & Hwy. 281, go 5 mi. E. on Hwy. 412 to NS 236. Turn S. & go 1.5 mi. to intersection of NS 236/EW 43. Turn W. & go 3/4 mi. at NS 235. Turn S. & go 1.4 mi. to ranch's main gate. The gate is locked at all times – once your arrival time is confirmed we will make sure the gate is unlocked for you. Please close the gate after you drive through, but don't lock it. Camping area is located 1.3 mi. S.

Stay at Cedar Haven Lodge, bring your own horse for trail rides or enjoy a peaceful retreat. Horseback riding on ranch horses also available, along w/hayrides, hiking, fishing & campfire cookouts.
www.glossmountainoutfitters.com

Waynoka, OK 73860
580-884-1305



17. Island Guest Ranch

From Ames: Follow FM road W. to Cimarron River bridge. Ranch road is on the S. side of the highway & E. side of the bridge. Follow the signs.

5,000-acre cattle ranch located on an island in the Cimarron River. All-inclusive, family-oriented vacations include lodging, meals & ranch activities. Activities include horseback riding, powwows, fishing, swimming, hiking, roping & Belgian draft horse trolley rides. Upland game & waterfowl hunting packages are available October-March.
www.islandguestranch.com

Ames, OK 73718
800-928-4574



14. Hamm's Sportsman Oasis

Go E. at the junction of Hwy. 183 & Gladstone Ave. for 12 mi. Turn S. on CR NS 234 & go 0.75 miles. Entrance to the lodge is on the E. side of the road.

Natural & liberated wild birds include turkey, chukar, quail, pheasant, Canadian goose, sandhill crane & dove. Release system allows liberated birds to be as wild as wild birds. Call for availability.
www.hammsoasis.com

18150 CR NS 234
Frederick, OK 73542
580-335-1892



18. Law Dawg Hunting Lodge

Go to the Hwy. 152 & Hwy. 81 junction. Travel W. 10.5 mi. on Hwy. 152. Turn S. on CR 2730 & go 2 mi. to CR 1180. Go E. 7/10 mi. on CR 1180. The lodge entrance is on the N. side of the road.

Fully equipped hunting lodge offering 3-day hunting trips (Thursday-Sunday) for duck, geese, turkey, dove, deer & wild hog during hunting seasons. Guide service available; decoys, dogs & transportation offered each day. Hunters may bring dogs, provided the dog is steady to shot, will kennel up & will not break.

Cogar, OK 73059
405-613-6913



15. Hitching Post Bed & Breakfast & Ranch

31 mi. NW of Boise City on Hwy. 325. Go 0.25 mi. N. to ranch headquarters.

B&B housed in a 100-year-old rock house w/a log cabin, cottage & mobile home, all w/kitchen or kitchenette facilities. Guided tours available for groups, w/historical sites & activities including horseback riding, guided trail rides, ranch activities & hunting opportunities.

101 W. Cedar St.
Kenton, OK 73946
580-261-7413
888-279-7397



19. Lazy S Ranch

From Frederick: Go 8 mi. E. on Hwy. 5, then N. 5 mi.

Come to SW Oklahoma & relax at this working cattle & wheat farm. There are not many places where guests can watch the wheat harvest along with hay production, but this is one of them! Enjoy a slower pace & some of Oklahoma's famous sunrises & sunsets. Call early to book hunts on this authentic ranch.
www.huntlazys.com

1020 Park Ave.
Frederick, OK 73542
580-305-7301

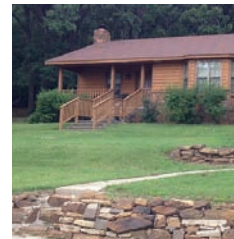


16. Howard Ranch Enterprises

At the junction of 9th & Oklahoman (Hwy. 34), go N. 10.2 mi. You will see a brick house with a horse statue out front on the NE corner of the county road junction.

13,000-acre, fifth-generation cattle ranch w/600 head of cattle & 40 head of horses. Guest ranch & working ranch w/ horseback riding, hiking, mountain biking. Offers an authentic working ranch experience w/owner Justin Howard, lifelong horse trainer, cowman & professional saddle bronc rider.
www.howardranchenterprises.com

206731 E. CR 30
Woodward, OK 73801
580-254-5552
580-334-5552



20. Moore Farms

From Pryor: Go 5 mi. W. of Pryor on Hwy. 20. Turn L./S. on S. 426 (paved road) and go 1 mi. Turn R./W. on W. 500 Road for 0.5 mi. to the dead end. Turn L. into the Moore Farms rustic wedding facilities. From Claremore: Go 10 mi. E. of the turnpike (I-44). Just past the NE vo-tech campus, turn R./S. onto S. 426 Road for 1 mi. Turn R./W. on W. 500 Road for 0.5 mi. to the dead end. Turn L. into the Moore Farms rustic wedding facilities.

Moore Farms totals 940 acres for crops, hay, cattle and the feed store. Beautiful event facilities include a rustic barn, open-air pavilion & the brand new Hitchin' Barn (climate-controlled with seating for 350). They also provide a guest cabin and bunkhouse for country getaways. The farm is open year-round. Call for booking or to set up a tour.
www.moorefarms.net

7965 W. 510
Pryor, OK 74361
918-825-0232





21. Moore's Flying M Ranch

Go E. of Tulsa on Hwy. 412, 16 mi. to 4240 Rd., then go N. (L.) 5 mi. to our entryway, marked by the ranch sign.

Ranch on 700 acres offers 2-story log cabin & use of the ranch & picnic grounds for your next event. Our ranch is the perfect setting for church & youth retreats, reunions, weddings, birthday parties or hayrides. Don't miss the Acropalypse Haunted Hayrides and The Widow Maker Mine Walk-Through on the weekends in October. Call for availability.

www.mooresflyingm.com

20707 E. 540 Road
Inola, OK 74036
918-638-8740
918-341-7146

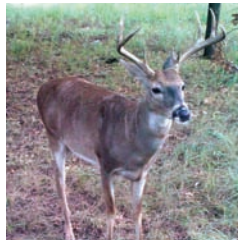


25. Pheasant Ridge

Go to the N. end of Hooker & turn W. to cross over the railroad tracks. Go W. 0.5 mi. until you reach the 4-way stop & see the FBC; continue W. 8 mi. until you reach another 4-way stop at CR 28 (toward Higgins, Kansas). Turn N. & go 4 mi. At the sign, turn E. & go 2 mi. Farm sits on the N. side of the road.

2,000-acre working farm & ranch with hunting lodge in an Old West setting. Hunts include wild & released ring-necked pheasants. Experienced guides & trained dogs available; guest lodging provided. Pheasant hunts run Sept. 1-March 31; prairie dog hunts run May 1-Sept. 1.

Hooker, OK 73945
866-486-8637



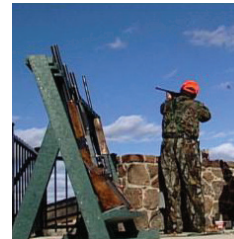
22. Mudcreek Outfitters

From Ringling: Take Hwy. 70 W. 4 mi. After crossing the bridge, turn L. on Rose Blvd. Turn L. at Wilborn Drive & follow the drive to the cabin.

Family-owned-and-operated hunting/outfitting service offers day- & yearlong leases. Hunt for deer, turkey & hogs in 1,200 acres of timber, prairie, marsh & ponds. Guest cabin available for nightly rental w/equipped kitchen, sleeping quarters w/linens, washer & dryer. Call for reservations.

www.mudcreekoutfitters.net

Ringling, OK 73456
580-465-7558



26. Red Rock Ranch

Take I-35 N. to the Hwy. 156 (Marland) exit; travel E.-NE to Badlands Road (E0320 Road). Turn E. on Badlands Road & travel 12.5 mi. The ranch sits on the N. side of the road.

This beautiful ranch is home to an amazing lodge with comfortable accommodations. Offers upland bird, quail, pheasant, chukar, turkey & deer hunts, as well as wobble trap & fishing. Lodging includes 2 cabins, sleeping 6 people each. Call for hunting package details.

www.redrockranchok.com

Marland, OK 74644
580-268-9663



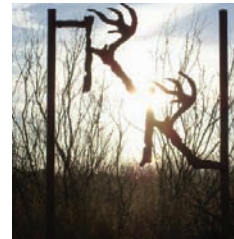
23. No Mercy Hunting Services LLC

Call for driving directions.

Enjoy a variety of hunts available on thousands of acres of prime hunting ground for wild hogs, doves, turkeys, prairie dogs, white-tailed deer or predators.

www.nomercyhunting.com

26196 CS 2640
Gracemont, OK 73042
580-515-4533



27. Rio Rojo Outfitters

From Mangum: Go 26 mi. S. on Hwy. 34 to the Hwy. 34/Hwy. 6 junction. Turn N. on Hwy. 6 & go 1 mi. to CRS 192. Turn S. on CRS 192 & go 0.3 mi.; the driveway of the lodge is on the W. side of the road. From Altus: Go 5 mi. W. on Hwy. 62 to Hwy. 6, then turn S. on Hwy. 6 to Olustee. Pass through the town & go 7 mi. W. to the Gypsum Creek Bridge; CRS 192 is the first road directly W. of the bridge. Turn S. on CRS 192 and go 0.3 miles; the driveway of the lodge is on the W. side of the road.

Guided hunts for white-tailed deer, turkey, quail & dove in southwest Oklahoma along the Red River. All meals & lodging included. Lodge has pool tables, card tables, a hot tub & satellite TV. All properties have exceptional habitat & are low-fenced. Call for information on birdwatching or retreats.

www.riorojooutfitters.com

Olustee, OK 73560
940-585-1094



24. Pennington Creek Hunting Club

Call for driving directions.

Hunting ranch located on more than 8,500 acres. Activities include fishing & fly-fishing on any of our 18 ponds; hunting for whitetail bucks, Rio Grande turkeys & wild hogs; & hiking. Hunting cabin is capable of sleeping 6 with all the amenities of home.

www.penningtoncreekhuntingclub.com

8301 W. Rocky Road
Mill Creek, OK 74856
580-223-3390





28. Rockytop Ranch

Call for driving directions.

Fishing, hunting, hiking, birdwatching & horseback riding in a historic setting with 100-year-old wagon trails, 1800s homesteads, petrified logs & other natural wonders. Organized trail rides & lodging available. Hog, deer, turkey, squirrel, rabbit & dove hunting offered. Reservations required.

www.huntrockytop.com

8657D 1277 Road
Lamar, OK 74850
918-656-3564



32. Western Cedar Co. Hunting Preserve

From Mooreland: Go E. 3.5 mi. on Hwy. 412 to NS217; turn S. on NS217 & go 2.3 mi. Farm entrance is on the L.

Hunt on a private 640-acre preserve with more than 7,000 acres of native hunting. 60 percent of native grassland is open & the remainder is intermingled in oaks, red cedars & plum thickets, providing excellent game cover, numerous watering holes & feed plots. The land is managed exclusively for wildlife.

www.oklahomahunts.com

442344 S. CR217
Mooreland, OK 73852
580-994-2500



29. Salt Creek Lodge

In Idabel: N. of the U.S. 70 bypass. Look for the signs at Central Ave.; follow to the property on the R./E.

Salt Creek Lodge is an 8-bedroom/8-bath lodge with single rooms and suites available. Kitchenettes are available in most suites. Encompasses over 1,800 acres and more than 25 miles of trails in the Little River bottoms and Little River frontage adjacent to Little River National Wildlife Refuge, making this a great hunting spot or family retreat location. Activities include 4-wheeling, hiking, birdwatching, horseback riding (bring your own horse), campfires, horseshoes & more.

2702 N. Central Ave.
Idabel, OK 74745
580-212-8980



33. Wild Horse Creek Hunting

Off I-35, take exit 55 and go W. on Hwy. 7 for 1.25 mi. Look for the mailbox w/a lightning bolt & gated entry.

Wild Horse Creek Hunting in Davis provides guided whitetail deer hunting & wild hog hunting packages. Hunters stay in Pecan Valley Inn Bed & Breakfast. Families also welcome.

www.wildhorsecreekhunting.com

36819 Oklahoma 7
Davis, OK 73030
580-369-3344



30. Sam's Duck Club

Go 12.5 mi. W. of Marietta on Hwy. 32. Turn S. on Jimtown Road & go 0.75 mi. The lodge entrance is on the E. side of the road.

Enjoy duck hunts w/many species of ducks, plus birdwatching or bow fishing in an airboat. Lodge features wrap-around porch, rustic decor & a scenic overlook of lake w/wildlife-photography opportunities.

Marietta, OK 73448
580-222-1276



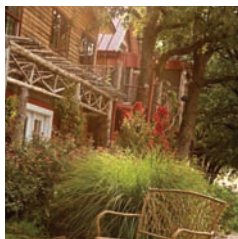
34. Windmill Outfitters

From Arnett: Go W. on Hwy. 51/60 to the W. end of town (you will see a New Highland tractor dealership); the first road immediately W. of the dealership is CR 181. Turn S. (L.) on CR 181 & go 3 mi. The entrance driveway is on the W. (R.) side of the road.

Our ranch has more than 45,000 acres of hunting ground. Fully guided hunts are available for quail, ducks & turkey. Deer hunts are semi-guided; professional guides are available. We offer home-cooked meals with Southern- & Western-style cooking. Hunts are customized for individual groups.

www.windmilloutfitters.com

Arnett, OK 73832
580-938-2447



31. The Canyon Inn at Medicine Rock Ranch

From OKC: W. on I-40 turn S. on exit 101. Go S. on Hwy. 281 through Hinton & Lookeba. Continue 1 mi. S. past Lookeba to CR 1150. Turn E. & go 2.7 mi. The entrance is on the S. side of the road.

One of Oklahoma's premier country-stay locations. Host to many varieties of wildlife & waterfowl, this bed & breakfast is a shutterbug's dream! Built in 2006 to mimic an old ranch headquarters, the home has every amenity. Beautiful landscaping & lawn features allow you to unwind & reconnect with nature without feeling like a tourist or guest. With multiple ponds on the property, there is plenty of space for nature hiking, fishing, birding & picnics. Guided hunts are available.

www.thecanyoninn.com

18129 CR 1150
Lookeba, OK 73053
405-457-6364
405-202-0038



