

Hustler FasTrak Parts Manual

HUSTLER[®]

•••••

Hustler Turf Equipment

••••

P.O. Box 7000

•••

Hesston, Kansas

•

67062-2097

Table of Contents

Chapter 1

General Information	1-1
---------------------------	-----

Chapter 2 Contents

Tractor Frame Rivet Nut Installation	2-2
Idler Plate Rivet Nut Installation	2-3
Engine Guard Rivet Nut Installation	2-4
Footrest Assembly	2-5

Chapter 3 Contents

Battery Installation	3-2
Deck Lift Assembly	3-4
Steering and Brake Assembly	3-6
Hydro Transmission Installation	3-8
Towlink Installation	3-10

Chapter 4 Contents

Honda 18 & 20 HP Engine Installation	4-2
Honda 16 HP Engine Installation	4-4
Briggs & Stratton Engine Installation	4-6
Fuel System Installation	4-8
Instrument Panel Assembly/Installation	4-10
Honda 18 & 20 HP Electrical Schematic (784868)	4-12
Honda 16 HP Electrical Schematic (786178)	4-14
Briggs & Stratton Electrical Schematic (786186)	4-16

Chapter 5 Contents

Front Wheel Assembly	5-2
Assemble with extended inner race down.Front Wheel Breakdown	7680445-3
Drive Wheel Assembly	5-4
Anti-Rollover Wheel Assembly	5-5

Chapter 6 Contents

Deck Assembly	6-2
Deck Pulley Assembly	6-4
Blade Spindle Assembly Breakdown	6-6

Chapter 7 Contents

Deck Installation	7-2
Deck Belt Routing and Tensioning	7-3
Seat Installation	7-4

Chapter 8 Contents

Tractor Decals	8-2
52" Deck Decals	8-4
44" Deck Decals	8-5

Index	i-1
-------------	-----

Chapter 1

General Information

This Manual covers FasTrak 20/52 model 926501, FasTrak 18/44 model 926519, FasTrak 16/44 model 926527, FasTrak 18/52 model 926592, FasTrak 17/52 model 926600, & FasTrak 17/44 model 926774.

Frequently Ordered Parts

PART NO.	DESCRIPTION
784231	Pump Drive A-Section Belt
784249	52" Deck B-Section Belt
784322	44" Deck B- Section, Belt
785626	Fuel Filter
785600	Honda 18 & 20 HP Air Filter
785618	Honda 18 & 20 HP Air Filter Precleaner
785634	Honda 18 & 20 HP Engine Oil Filter
787226	Honda 16 HP Air Filter
787234	Honda 16 HP Engine Oil Filter
786988	Air Cleaner Cartridge, Briggs & Stratton
787002	Oil Filter, Briggs & Stratton Engine

Service Literature

PART NO.	DESCRIPTION
365270	FasTrak Owner's Manual
785642	Honda 18 & 20 HP Engine Manual
787242	Honda 16 HP Engine Manual
786962	17.5 HP Briggs & Stratton ELS Engine Manual

Options

PART NO.	DESCRIPTION
365668	52" FasTrak Mulch Kit
365684	44" FasTrak Mulch Kit
785428	16" CW Gator Blade
785436	18" CW Gator Blade
784850	FasTrak Arm Rest Kit
367425	FasTrak Seat Spring Kit
367656	FasTrak Hour Meter Kit

Note: *When ordering parts, you must use the part number as shown for each part, not the index number. Always give the model and serial number to your parts and service representative.*

Note: *Items sold in bulk such as seals and hoses are sold by the foot.*

Using this manual

Illustrations used were current at the time of printing, but subsequent production changes may cause your machine to vary slightly in detail. Excel Industries, Inc. reserves the right to redesign and change the machine as deemed necessary, without notification. If a change has been made to your machine which is not reflected in this parts manual, see your Hustler dealer for current information and parts.

Hardware Description Codes & Abbreviations

The following codes are used throughout this parts manual. Refer to this list when ordering parts.

ABBREVIATION	DESCRIPTION
CB	Carriage Bolt
CE	Clevis Pin
CP	Cotter Pin
CS	Cap Screw
CW	Cup Washer
FDRW	Fender Washer
FW	Flat Washer
HX	Hex Head
LW	Lock Washer
MB	Machine Bushing
MS	Machine Screw
NT	Nut
SC	Self Tapping Cap Screw
SH	Socket Head
SB	Shoulder Bolt
SS	Set Screw
OD	Outside Diameter
ID	Inside Diameter

Standard Torques

The following chart lists the standard torque values for the threaded fasteners found in this manual. Torque all cap screws, nuts and set screws to these values unless a different torque is shown in the Notes section next to the fastener

SIZE	FT-LBS	NM	SIZE	FT-LBS	NM
.250	8.2	11.1	M3	1	1.3
.312	17	23	M4	2.2	3
.375	30	40	M5	4.5	6.1
.438	48	65	M6	7.7	10.4
.500	73	99	M8	18.5	25
.562	105	143	M10	37	50
.625	145	200	M12	64	87
.750	260	350	M16	160	215
.875	420	565	M20	320	435
1.00	625	850	M24	555	750

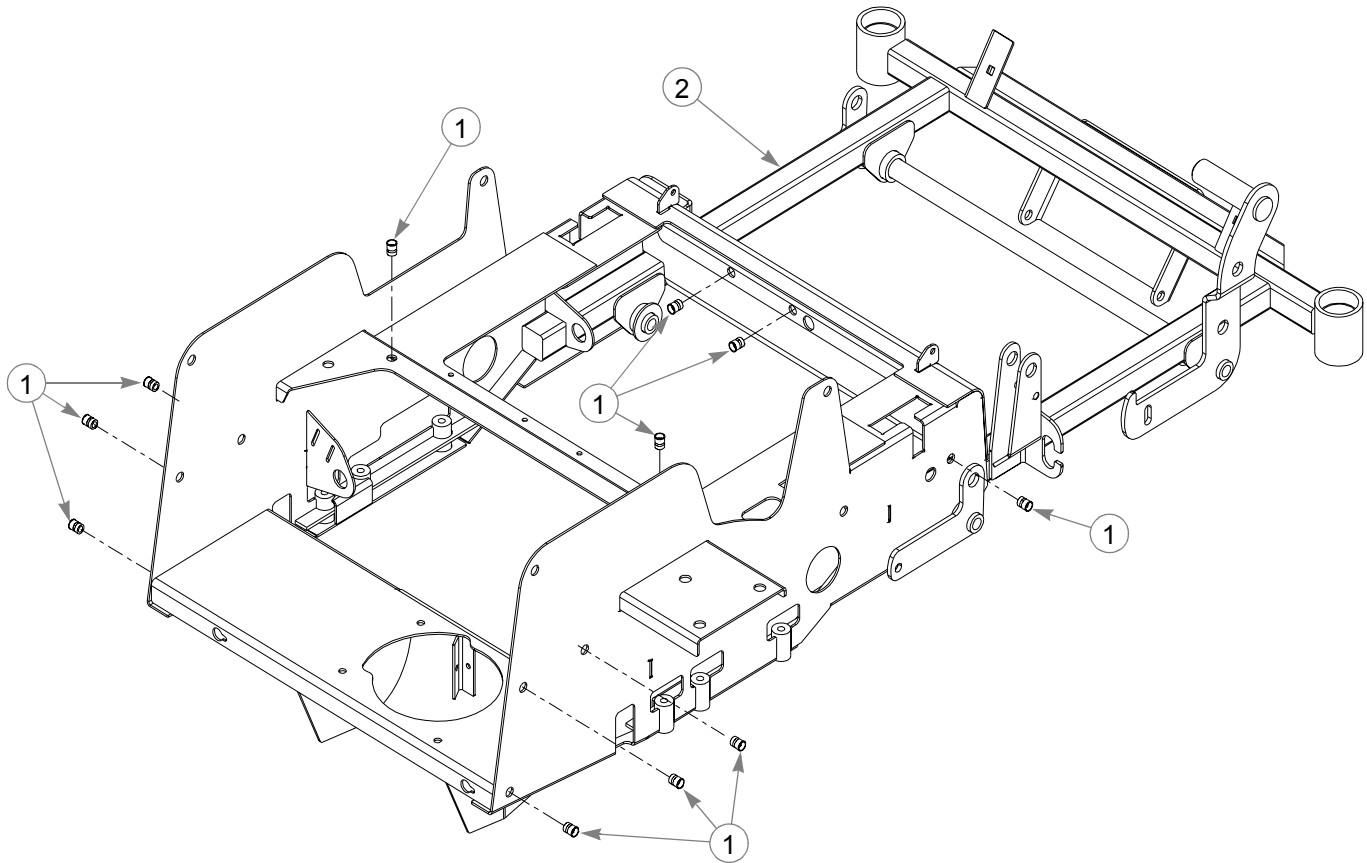
NOTE:

**Loctite 592 to be used on all pipe threads.
Lubricate all grease zerks.**

Chapter 2 Contents

Tractor Frame Rivet Nut Installation	2-2
Idler Plate Rivet Nut Installation.	2-3
Engine Guard Rivet Nut Installation.	2-4
Footrest Assembly	2-5

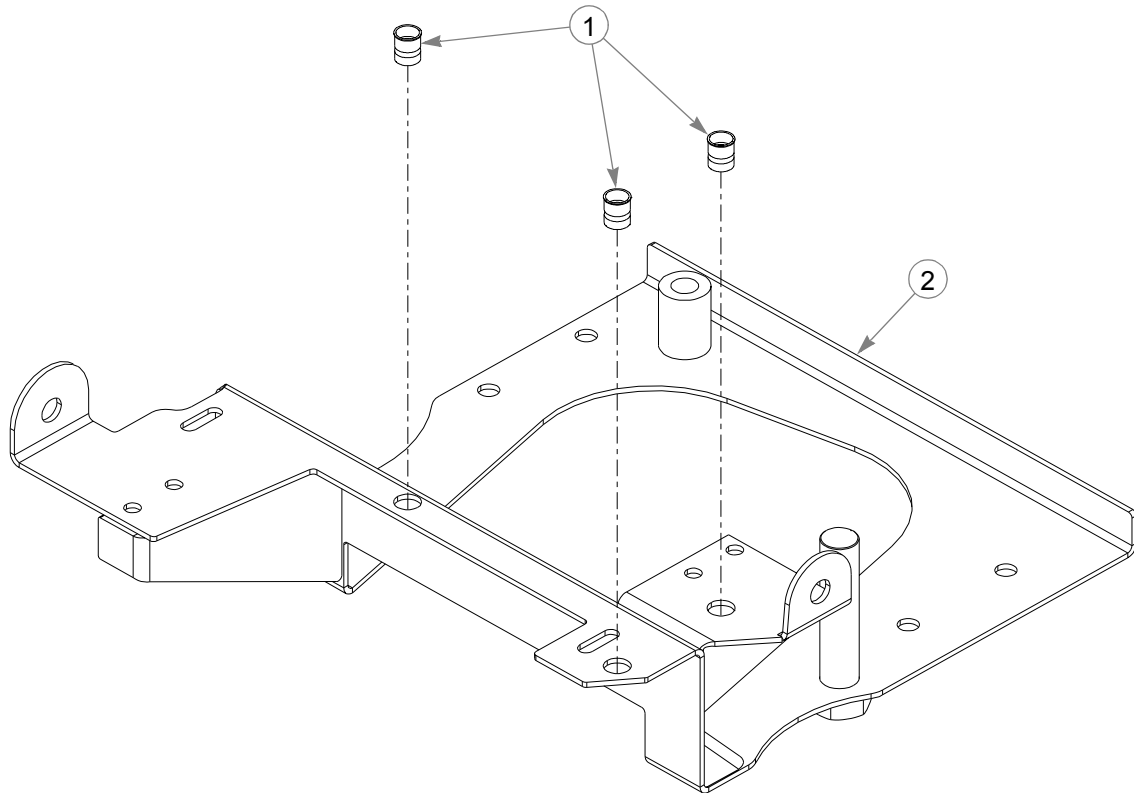
Tractor Frame Rivet Nut Installation



INDEX NO.	SERVICE PART NO.	MFG. PART NO.	QTY.	DESCRIPTION
1	N/A	808485	11	RIVET NUT, 5/16-18 THREAD
2	546044	365544	1	44" FASTRAK FRAME
	545962	361667	1	52" FASTRAK FRAME

NOTES:

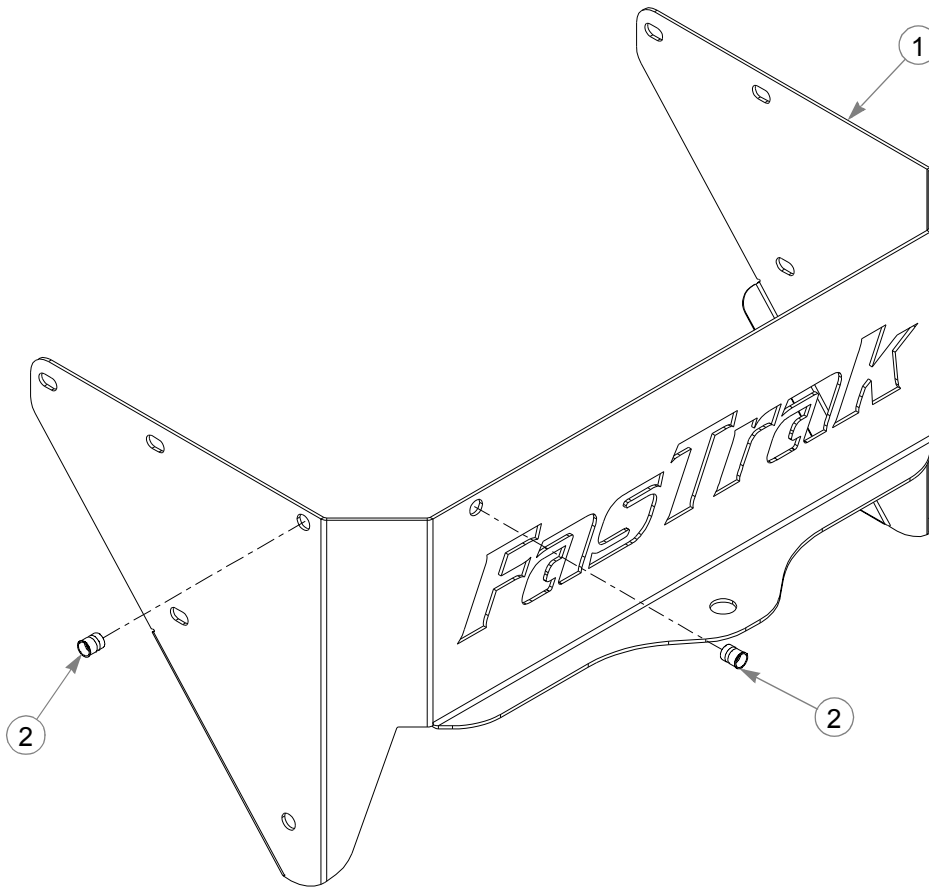
Idler Plate Rivet Nut Installation



INDEX NO.	SERVICE PART NO.	MFG. PART NO.	QTY.	DESCRIPTION
1	N/A	808485	3	RIVET NUT, 5/16-18 THREAD
2	363952	363952	1	IDLER PLATE

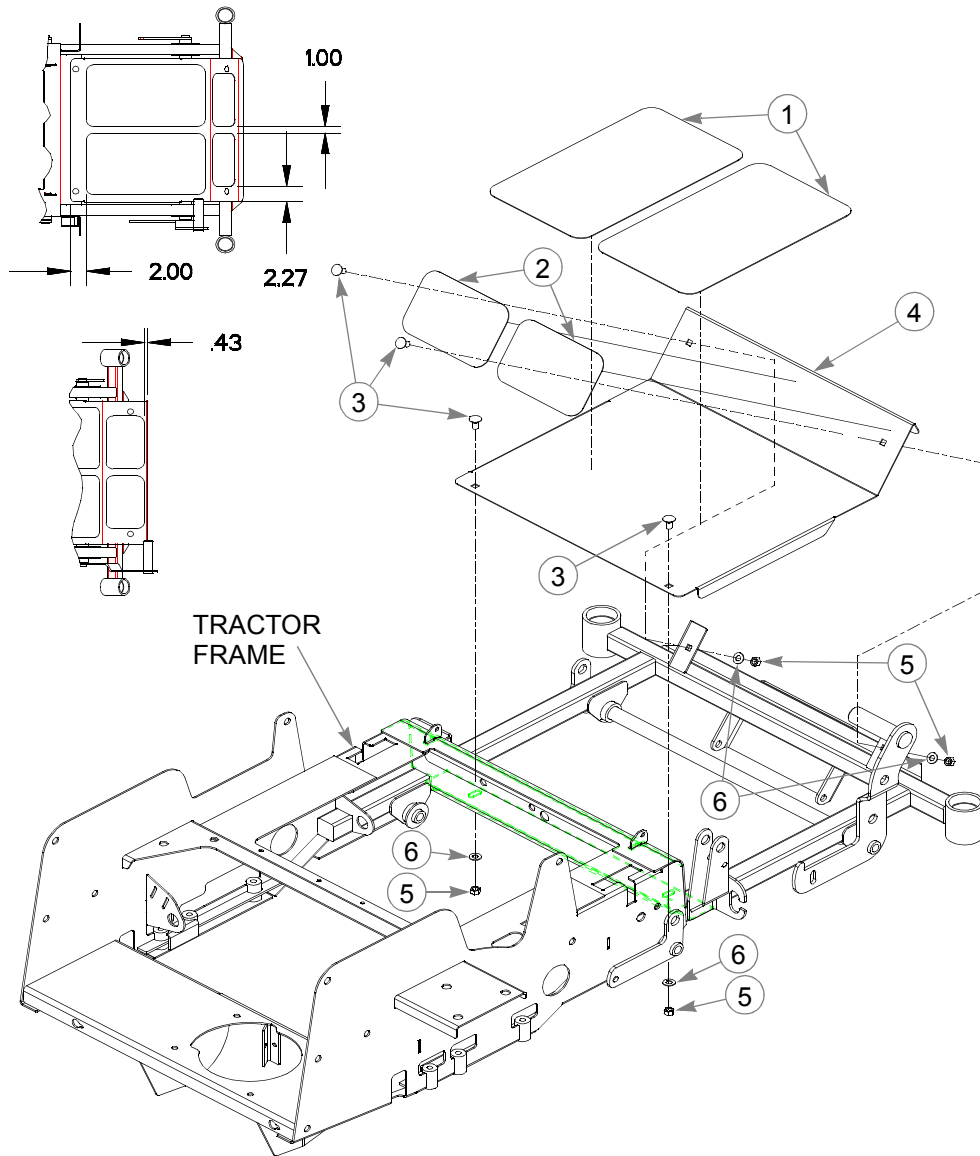
NOTES:

Engine Guard Rivet Nut Installation



INDEX NO.	SERVICE PART NO.	MFG. PART NO.	QTY.	DESCRIPTION
1	364885	364885	1	ENGINE GUARD
2	N/A	808485	2	RIVET NUT, 5/16-18 THREAD

Footrest Assembly



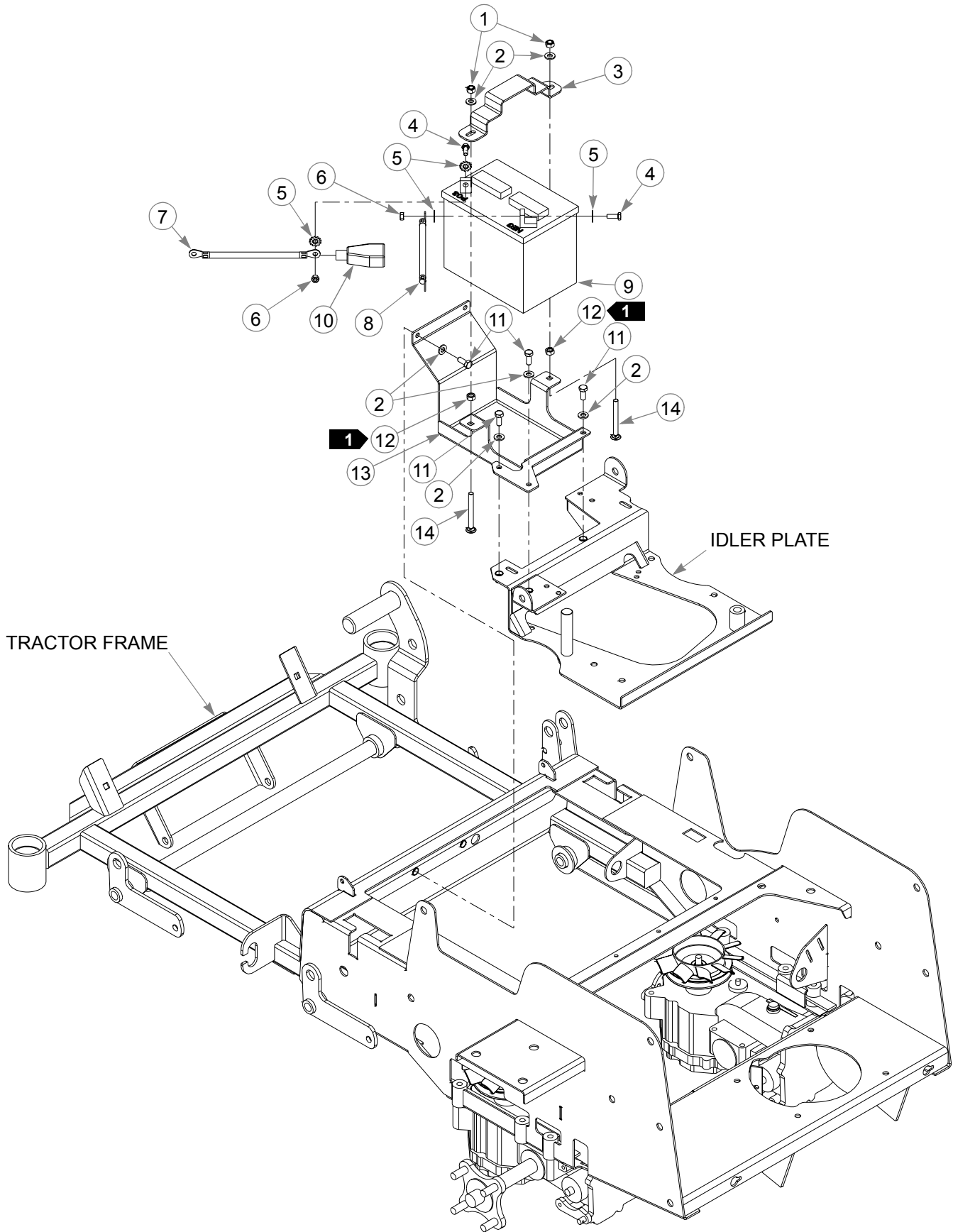
INDEX NO.	SERVICE PART NO.	MFG. PART NO.	QTY.	DESCRIPTION
1	785493	785493	2	LOWER STEP TREAD
2	785485	785485	2	UPPER STEP TREAD
3	011320	011320	4	CB .375-16 X .750 STD ZN
4	355651	355651	1	FLOOR PLATE
5	054502	054502	4	NT .375-16 HX GRD 5 ZNYC
6	767954	767954	4	FW .406 X .812 X .060 SAE HD ZN

NOTES:

Chapter 3 Contents

Battery Installation	3-2
Deck Lift Assembly	3-4
Steering and Brake Assembly	3-6
Hydro Transmission Installation.	3-8
Towlink Installation.	3-10

Battery Installation



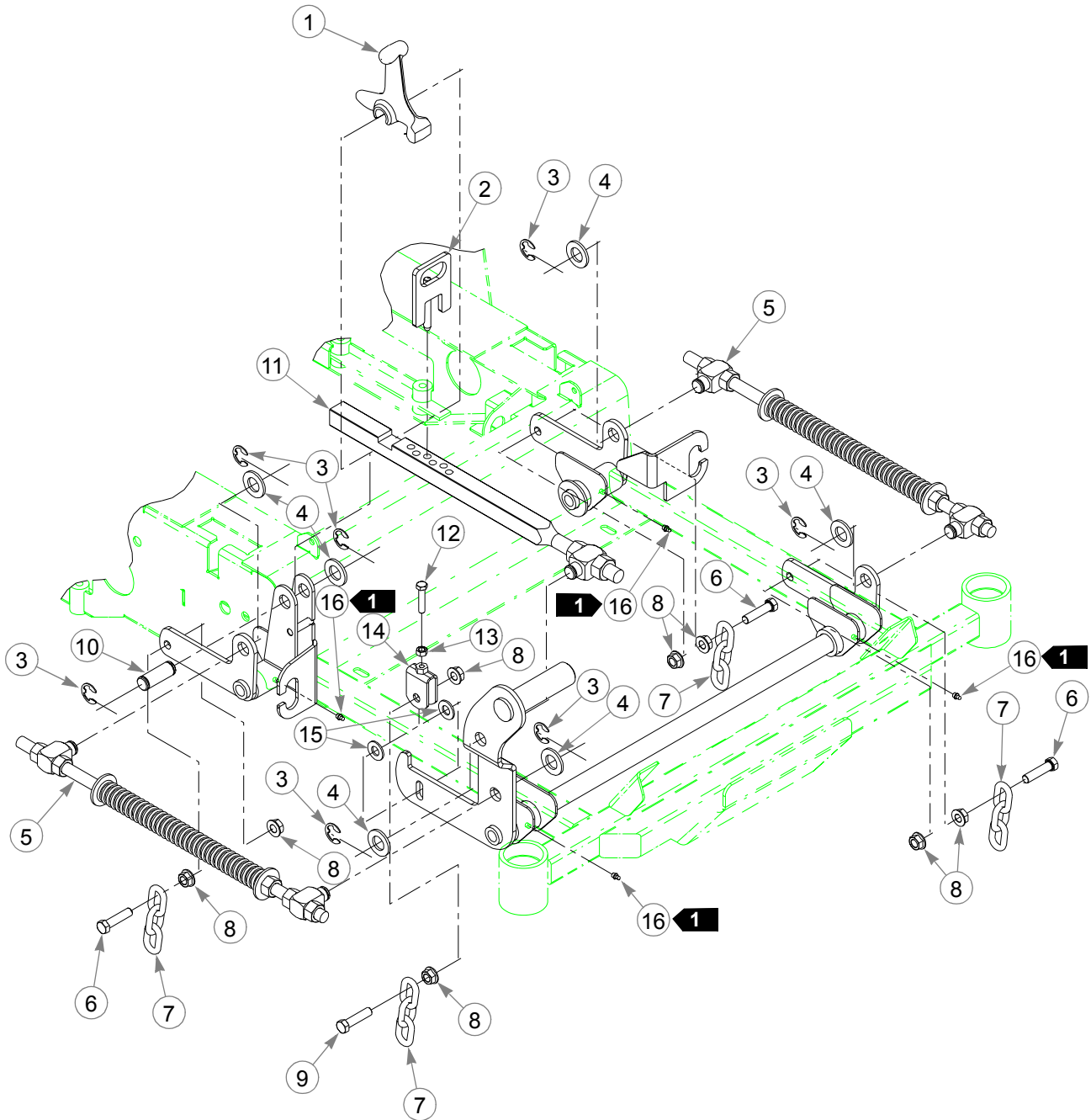
Battery Installation

INDEX NO.	SERVICE PART NO.	MFG. PART NO.	QTY.	DESCRIPTION	
1	058776	058776	2	NT .312-18 HX NL ZNYC	
2	768523	768523	7	FW .343 X .687 X .051/.080 HD ZNYC	
3	348417	348417	1	BATTERY CLAMP STRAP	
4	055939	055939	2	CS .250-20 X .750 HX G5 ZNYC	
5	029868	029868	4	LW .250 INT-EXT TOOTH ZNYC	
6	024927	024927	2	NT .250-20 HX GR.5 ZNYC	
4	785063	785063	1	POSITIVE BATTERY CABLE	
2	786632	786632	1	POSITIVE BATTERY CABLE	
5	4	785071	785071	1	NEGATIVE BATTERY CABLE
3	8	786640	786640	1	NEGATIVE BATTERY CABLE
9	740696	740696	1	BATTERY (VU1LH-8)	
10	771428	771428	1	BATTERY CABLE BOOT-RED	
11	034280	034280	5	CS .312-18 X .750 HX G5 ZNYC	
12	034272	034272	2	NT .312-18 HX G5 ZNYC	
13	364174	364174	1	BATTERY SUPPORT	
14	779850	779850	2	CB .312-18 X 3.00 FUL ZN	

NOTES:

1. Items 12 (034272 NT .312-18 G5 ZNYC) to be tightened against Item 13 (364174 Battery Support) to lock Items 14 (779850 CB .312-18 X 3.00 FUL ZN) to Battery Support.
2. Used on mowers with Briggs & Stratton engines and Honda 16 HP engines.
3. Used on mowers with Honda 16 HP Engines.
4. Used on mowers with Honda 18 & 20 HP engines.
5. Used on mowers with Briggs & Stratton engines.

Deck Lift Assembly



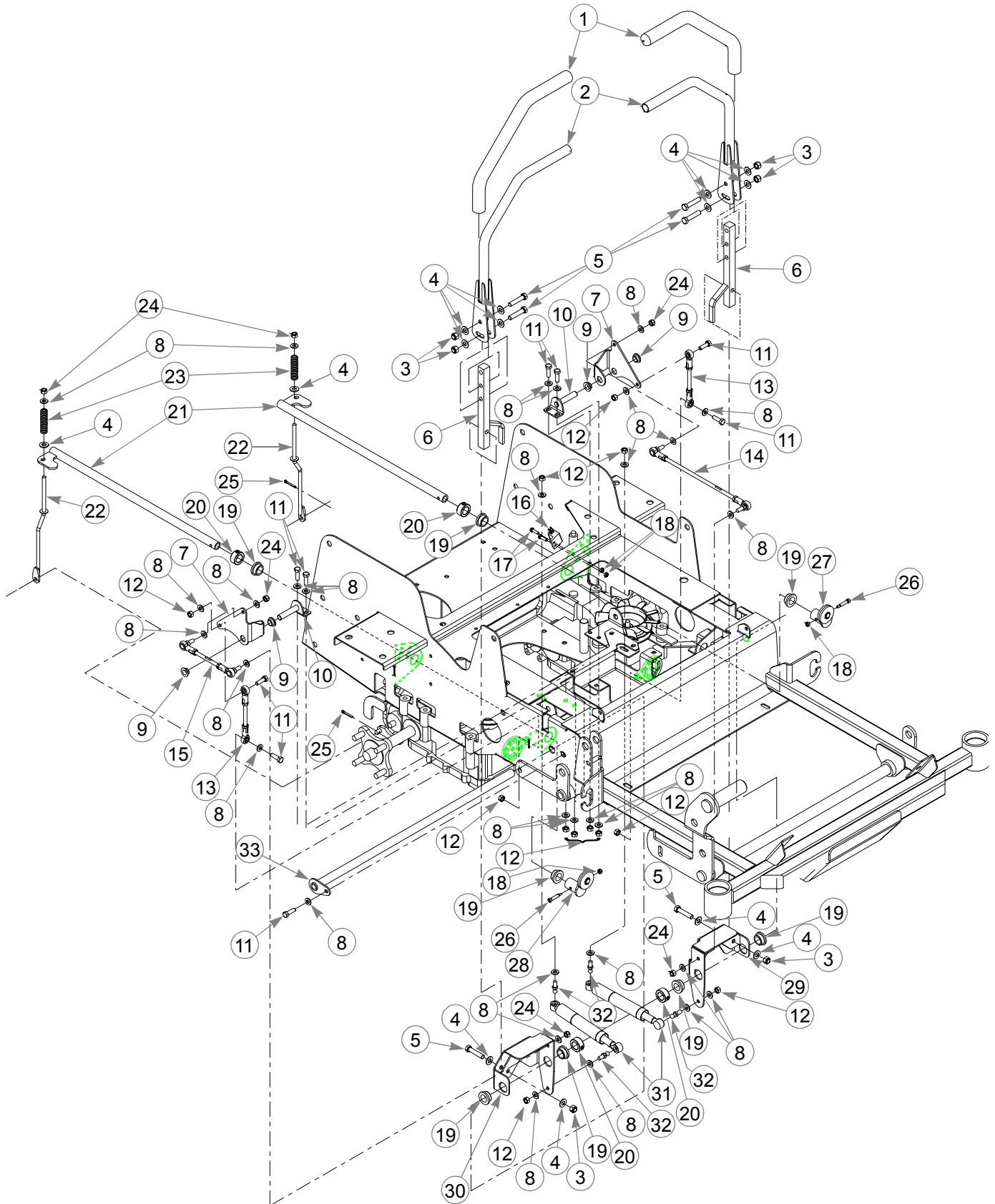
Deck Lift Assembly

INDEX NO.	SERVICE PART NO.	MFG. PART NO.	QTY.	DESCRIPTION
1	348318	348318	1	STOP HANDLE
2	348284	348284	1	HEIGHT ADJUSTOR STOP
3	781294	781294	7	CLIP E, 1.00 X .625 X .050
4	784686	784686	6	FW .812 X 1.469 X .134 THK ZNYC
5	782995	782995	2	DECK LIFT SPRING
6	055749	055749	3	CS .437-14 X 1.750 HX G5 ZNYC
7	360131	360131	4	DECK LIFT CHAIN
8	704643	704643	8	NT .437-14 HX FLG ZN
9	781831	781831	1	CS.437-14 X 1.750 FULTH G5 ZNYC
10	781229	781229	1	CE .750 X 2.25 X 1.75 HEADLESS
11	784488	784488	1	DECK LIFT INDICATOR
12	756270	756270	1	CS .312-18 X 1.50 FLTHR GR5 ZNYC
13	034272	034272	1	NT .312-18 HX G5 ZNYC
14	348458	348458	1	DECK LEVELER YOKE
15	767962	767962	2	FW .531 X 1.063 X .090 SAE HD ZN
16	015495	015495	4	GREASE FITTING STRAIGHT

NOTES:

1. Apply grease to zerks (see owners manual).

Steering and Brake Assembly



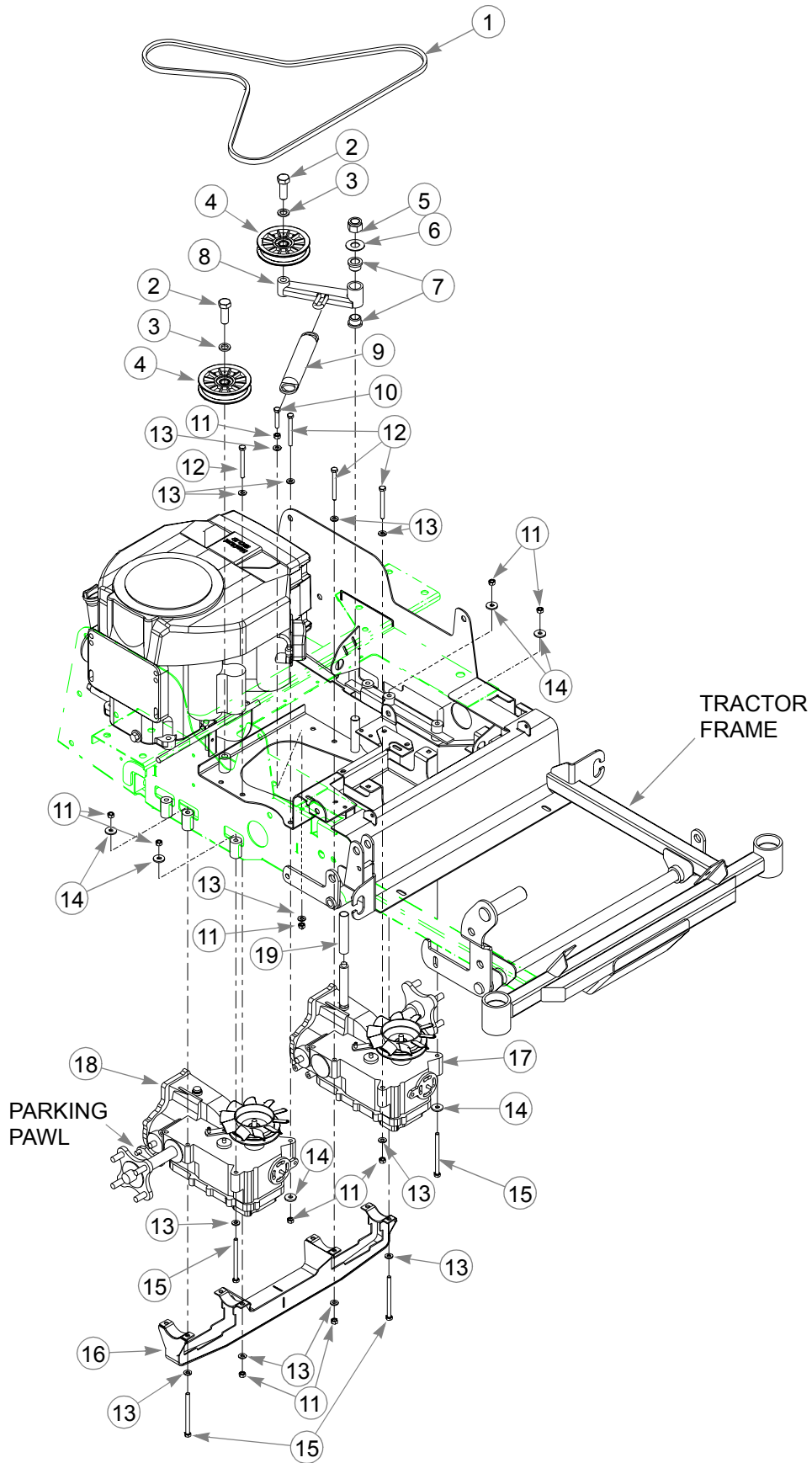
Steering and Brake Assembly

INDEX NO.	SERVICE PART NO.	MFG. PART NO.	QTY.	DESCRIPTION
1	781260	781260	2	STEERING BAR GRIP
2	360487	360487	2	STEERING BAR
3	086660	086660	6	NT .375-16 HX LK NY
4	767954	767954	14	FW .406 X .812 X .060 SAE HD ZN
5	705178	705178	6	CS .375-16 X 1.750 HX G5 ZNYC
6	363812	363812	2	STEER ARM SUPPORT
3	360677	360677	2	STEERCRANK LEVER
8	768523	768523	31	FW .343 X .687 X .051/.080 HD ZNYC
9	768259	N/A	4	INGUS BUSHING, #MFI-0810-05
10	362251	362251	2	CRANK PIVOT
11	036236	036236	9	CS .312-18 X 1.000 HX G5 ZNYC
12	034272	034272	12	NT .312-18 HX G5 ZNYC
13	784405	784405	2	FIXED ASSEMBLY PUMP ROD
14	784355	784355	1	LH PUMP ROD ADJUSTER ASSEMBLY
15	784371	784371	1	RH PUMP ROD ADJUSTER ASSEMBLY
16	781211	781211	2	PUSH BUTTON SWITCH
17	063198	063198	4	CS 10-24 X .75 HXFLK ZNYC
18	059832	059832	6	NT #10-24 HX NL ZN
19	770867	770867	8	PLASTIC BUSHING, .750 X 1.00 X .50
20	784439	784439	4	LOCK COLLAR .750"
21	359737	359737	2	BRAKE TUBE
22	359745	359745	2	BRAKE LINK
23	784421	784421	2	BRAKE TENSION SPRING
24	023655	023655	6	NT .312-24 HX NL ZNYC
25	017251	017251	2	CP .156D X 1.000 LG HML ZN
26	785162	785162	2	SB .250 X 1.00 SH #10-24 ZNYC
4	787879	787879	1	LH ROLLER ARM
4	787887	787887	1	RH ROLLER ARM
29	363176	363176	1	LEFT STEER ARM SUPPORT
30	361550	361550	1	RIGHT STEER ARM SUPPORT
31	783696	783696	2	CENTERING DAMPENER
32	781922	781922	4	DAMPER BALL STUD
33	361295	361295	1	PIVOT TUBE

NOTES:

1. With Steering Bars in park position, adjust Items 16 (781211 Push Button Switch) upward until switch is activated by Items 21 (359737 Brake Tube).
2. Apply grease to Items 9 and 19 on new assemblies.
3. Includes two (2) of 768259 (Ingus Bushing, #MFI-0810-05).
4. Includes 078386 FW and 784819 Retaining Ring.

Hydro Transmission Installation



Hydro Transmission Installation

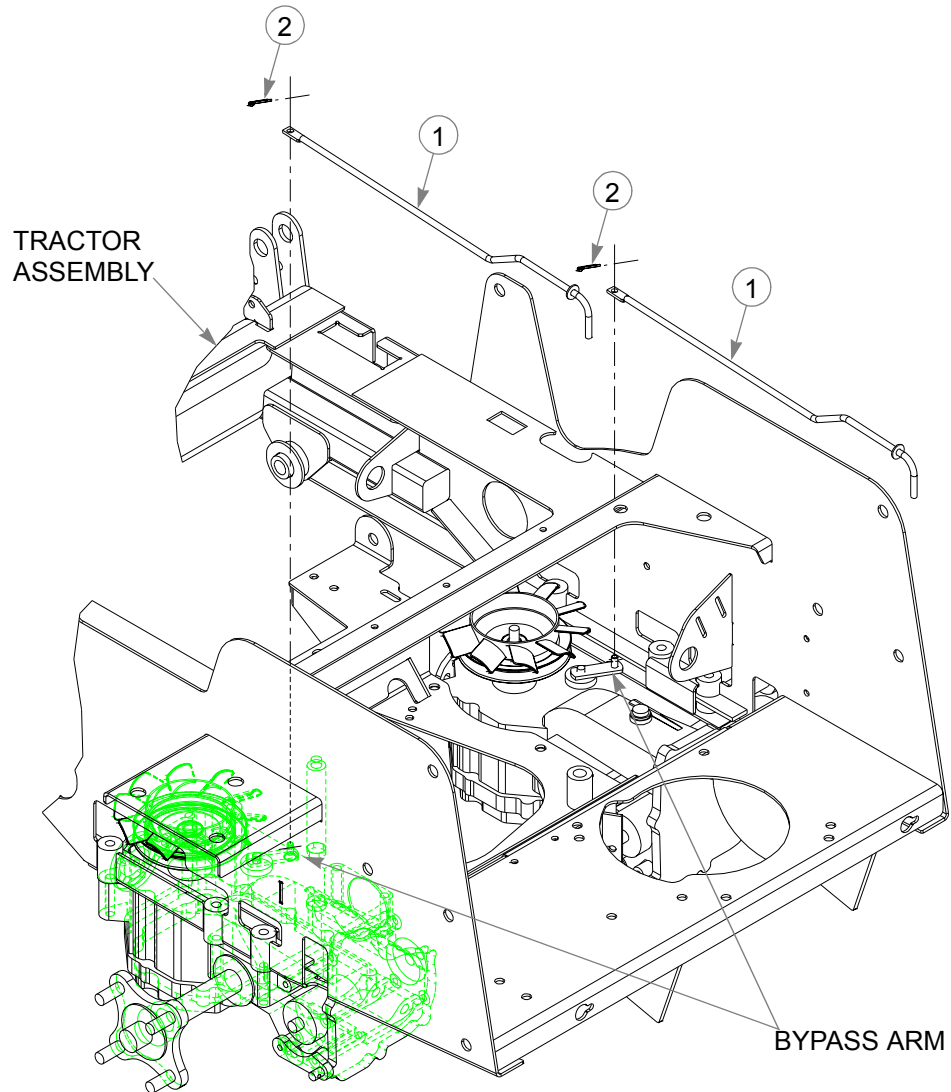
INDEX NO.	SERVICE PART NO.	MFG. PART NO.	QTY.	DESCRIPTION
1	784231	784231	1	A-SECTION PUMP BELT
2	025007	025007	2	CS .625-11 X 1.750 HX G5 ZNYC
3	028118	028118	2	FW .62 X 1.00 X .134 ZNYC
4	784827	784827	2	4.00"OD, 5/8"ID IDLER PULLEY
5	061101	061101	1	NT .750-10 HX NL ZN
6	025296	025296	1	FW .760 X 1.625 X .08 ZNYC
7	781153	781153	2	UHMW BUSHING
8	363788	363788	1	PUMP IDLER
9	781302	781302	1	IDLER SPRING
10	050161	050161	1	CS .312-18 X 1.750 HX G5 ZNYC
11	034272	034272	14	NT .312-18 HX G5 ZNYC
12	043067	043067	6	CS .312-18 X 3.00 HX G5 ZNYC
13	768523	768523	14	FW .343 X .687 X .051/.080 HD ZNYC
14	712927	712927	10	FW .344 X 1.00 X .12 HRD ZNYC
15	785113	785113	6	CS .312-18 X 4.250 HX G5 ZNYC
16	361212	361212	1	LOWER MOUNT SUPPORT
17	788067	788067	1	LEFT PUMP/MOTOR COMBO
18	788059	788059	1	RIGHT PUMP/MOTOR COMBO
19	786301	786301	1	IZT BREATHER SLEAVE

NOTES:

1. Service parts for Left/Right Pump/Motor Combo:

784306	RIGHT HAND PARKING PAWL
784314	LEFT HAND PARKING PAWL
785725	FAN
785717	PULLEY
785733	SEAL KIT

Towlink Installation



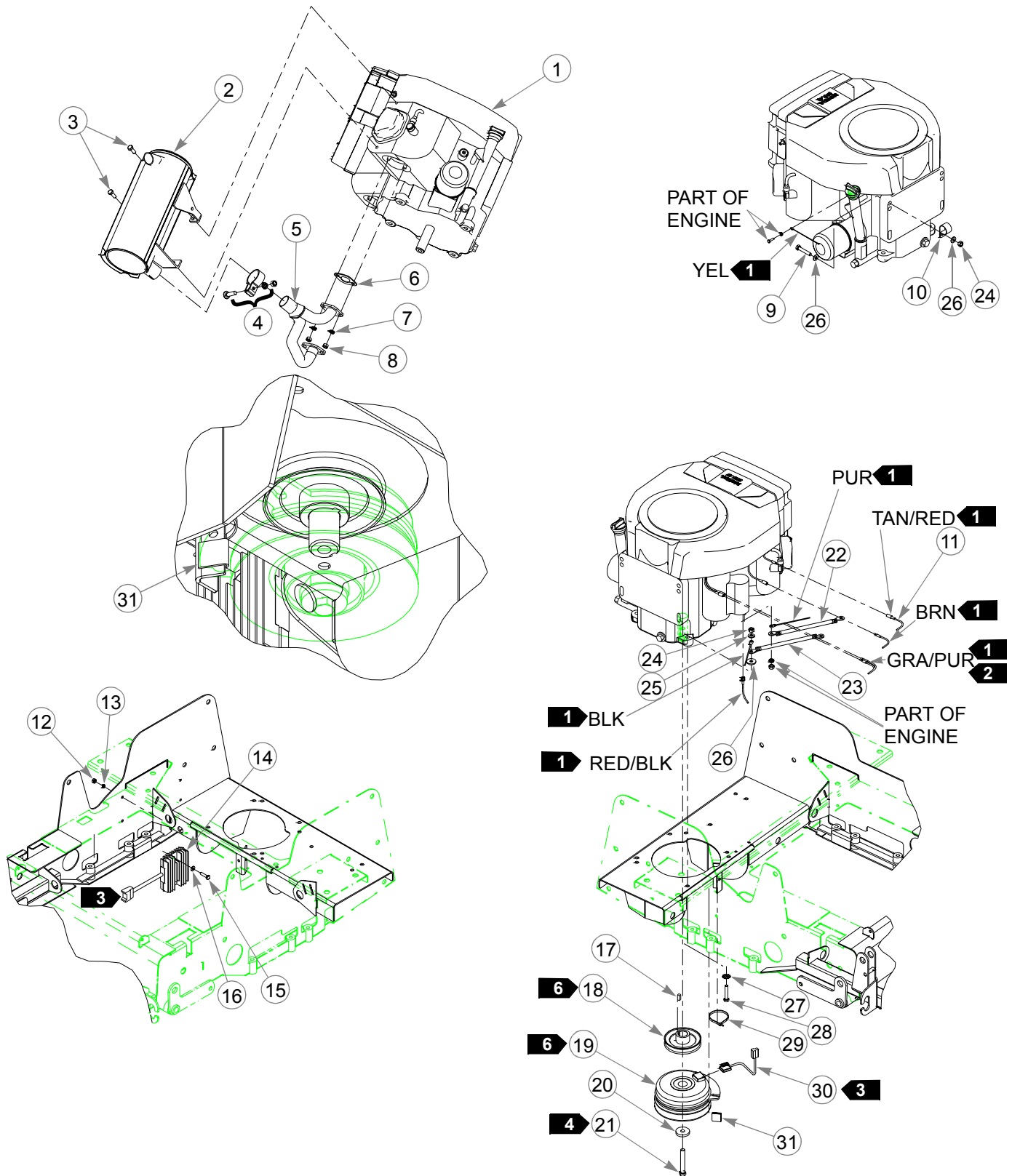
INDEX NO.	SERVICE PART NO.	MFG. PART NO.	QTY.	DESCRIPTION
1	786269	786269	2	TOW RELEASE LINK
2	066878	066878	2	CP .094 X .500 LG HML ZN

NOTES:

Chapter 4 Contents

Honda 18 & 20 HP Engine Installation	4-2
Honda 16 HP Engine Installation.	4-4
Briggs & Stratton Engine Installation	4-6
Fuel System Installation.	4-8
Instrument Panel Assembly/Installation.	4-10
Honda 18 & 20 HP Electrical Schematic (784868)	4-12
Honda 16 HP Electrical Schematic (786178)	4-14
Briggs & Stratton Electrical Schematic (786186).	4-16

Honda 18 & 20 HP Engine Installation



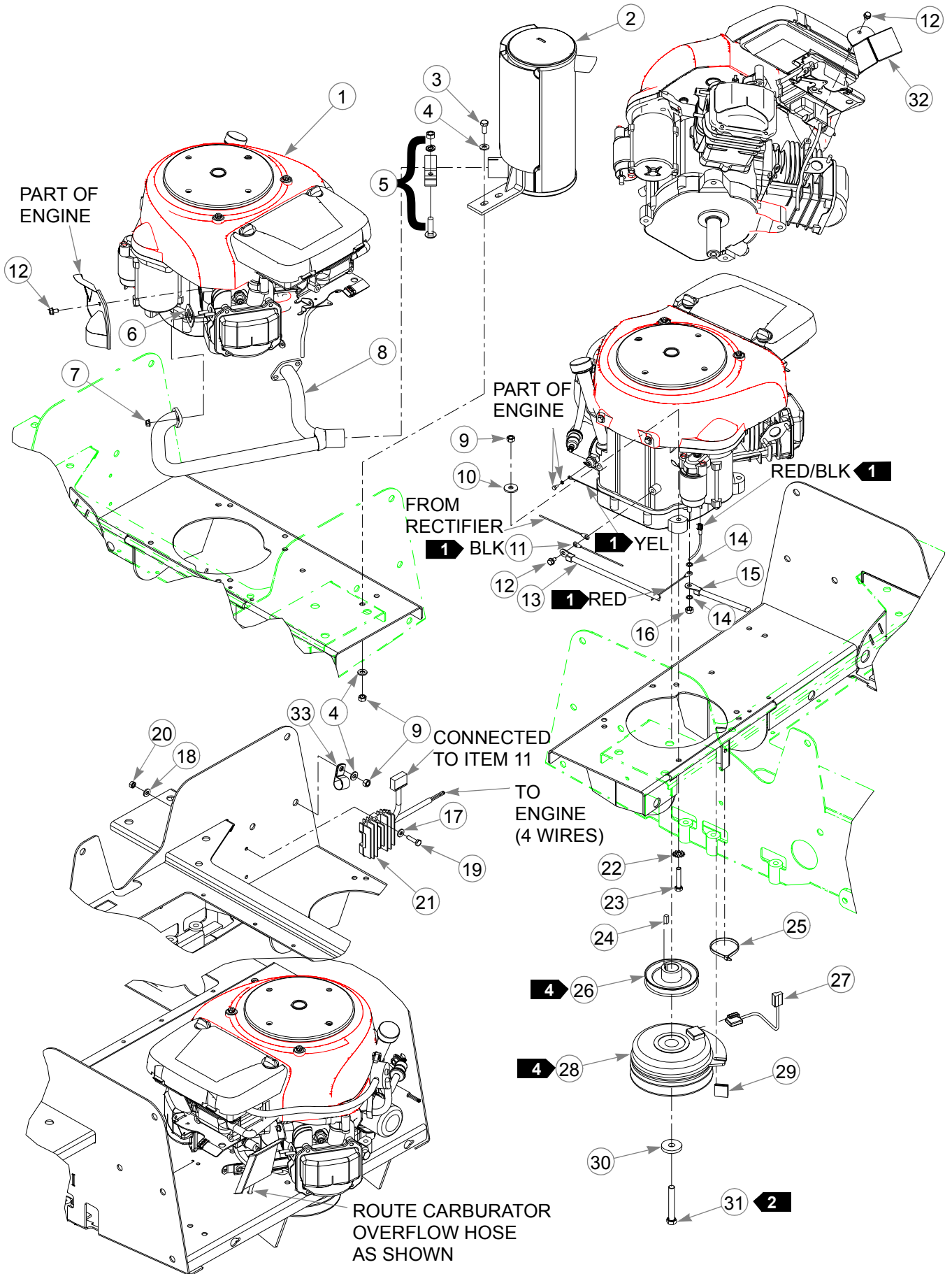
Honda 18 & 20 HP Engine Installation

INDEX NO.		MFG. PART NO.	QTY.	DESCRIPTION
1	784629	785527	1	HONDA 20HP ENGINE
	784611	785519	1	HONDA 18HP ENGINE
2	784843	786202	1	18/20 HONDA MUFFLER
3	720177	720177	2	CS M 8-1.25 X 20 10.9 HX FL ZNYC
4	785378	785378	1	EXHAUST PIPE CLAMP
5	784959	784959	1	FASTRAK MUFFLER MANIFOLD
6	785543	N/A	2	HONDA (20) MUFFLER GASKET
7	017004	N/A	4	LW .312 MED SPRING ZNYC
8	782664	N/A	4	NT M8-1.25 HX STAINLESS STEEL
9	050161	050161	1	CS .312-18 X 1.75 HX G5 ZNYC
10	000398	000398	1	CLAMP
11	784868	784868	1	FASTRAK WIRE HARNESS
12	024927	024927	2	NT .250-20 HX GR 5 ZNYC
13	017038	017038	2	LW .250 MED SPRING ZNYC
14	785477	N/A	1	HONDA 20 AMP RECTIFIER
15	056077	056077	2	CS .250-20 X 1.00 HX G5 ZNYC
16	768515	768515	2	FW .250 X .560 X .04 SAE ZNYC
17	712372	712372	1	KEY 1/4 SQ X 0.66 LONG
18	786616	786616	1	PUMPDRIVE PULLEY
19	784835	784835	1	FASTRAK CLUTCH
20	763417	763417	1	FW .454 X 1.50 X .250
21	785048	785048	1	CS .437-20 X 3.00 HX G5 ZNYC
22	785063	N/A	1	POSITIVE BATTERY CABLE
23	785071	N/A	1	NEGATIVE BATTERY CABLE
24	034272	034272	5	NT .312-18 HX G5 ZNYC
25	768523	768523	3	FW .343 X .687 X .051/.080 HD ZNYC
26	712927	712927	4	FW .344 X 1.00 X .12 HRD ZNYC
27	029876	029876	4	LW .312 INT-EXT TOOTH ZNYC
28	052837	052837	4	CS .312-18 X 1.500 HX G5 ZNYC
29	000331	000331	1	SMALL/SHORT WIRE TIE
30	785204	785204	1	CLUTCH WIRE HARNESS PIGTAIL
31	784918	784918	1	RUBBER BUMPER

NOTES:

1. Part of Item 11 (784868 FasTrak wire harness).
2. Two wires.
3. Connect to Item 11 (784868 FasTrak wire harness).
4. Torque to 45-48 ft-lb. Use Loctite® 242 on threads.
5. Engine oil capacity; 2.3 US qts. (with filter), see engine manual.
6. Coat ID with anti sieze.
7. Engine speed; High speed - 3450 ±50 RPM.

Honda 16 HP Engine Installation



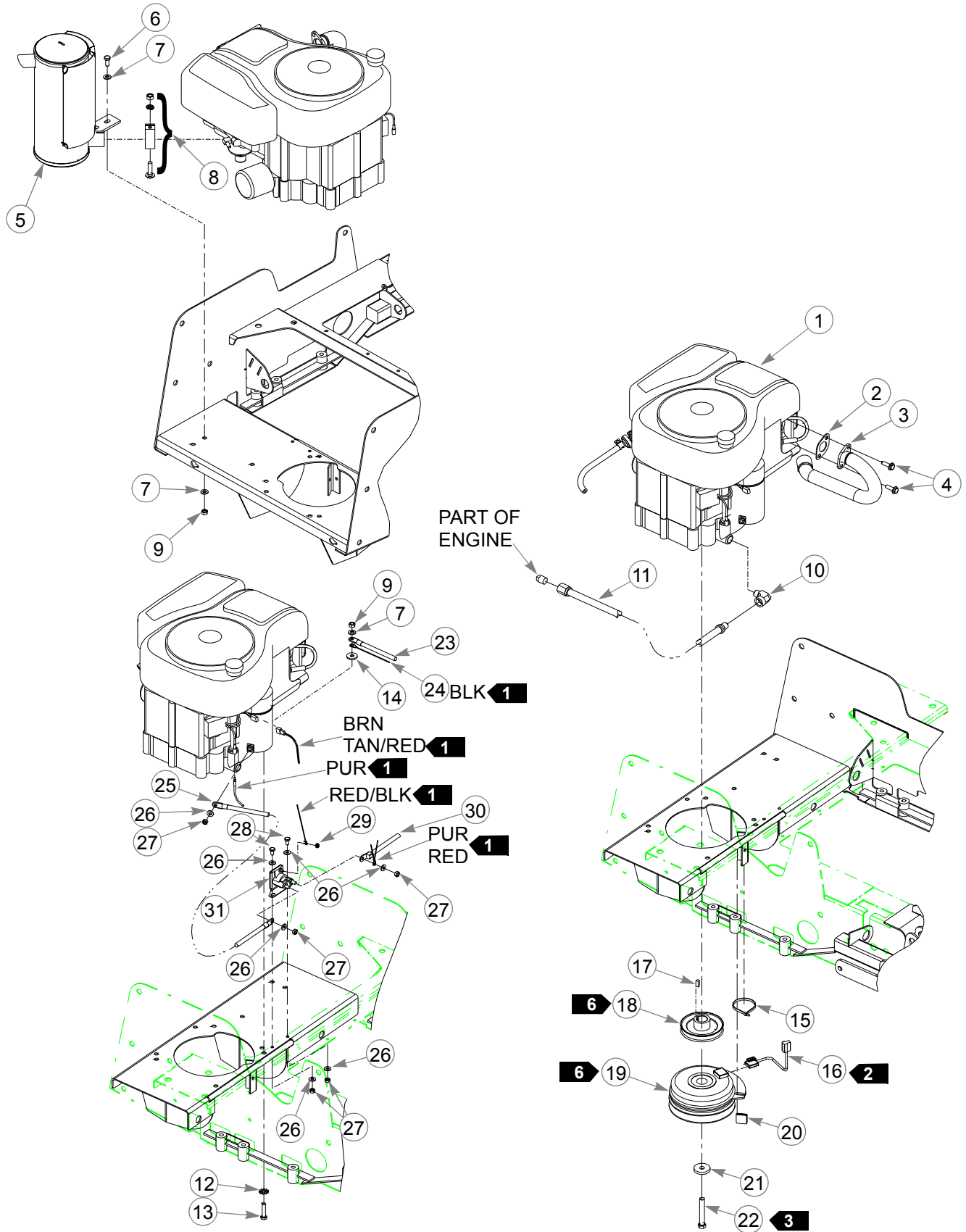
Honda 16 HP Engine Installation

INDEX NO.	SERVICE PART NO.	MFG. PART NO.	QTY.	DESCRIPTION
1	785394	785394	1	HONDA 16 HP ENGINE
2	785410	785410	1	16 HONDA MUFFLER
3	034280	034280	2	CS .312-18 X .750 HX G5 ZNYC
4	768523	768523	5	FW .343 X .687 X .051/.080 HD ZNYC
5	785378	785378	1	EXHAUST PIPE CLAMP
6	785543	N/A	2	HONDA MUFFLER GASKET
7	005231	005231	4	NT M6-1.0 X10 HX FLG ZN
8	785402	785402	1	FASTRAK 16 HP MUFFLER MANIFOLD
9	034272	034272	7	NT .312-18 HX G5 ZNYC
10	712927	712927	4	FW .344 X 1.00 X .12 HRD ZNYC
11	786178	786178	1	FASTRAK 16 HONDA WIRE HARNESS
12	739144	739144	3	CS M 6-1.0 X 12 10.9 HXFL ZN
13	786640	N/A	1	NEGATIVE BATTERY CABLE
14	725267	725267	2	FW .318 X .472 X .047 ZN
15	786632	N/A	1	POSITIVE BATTERY CABLE
16	782664	782664	1	NT M8-1.25 HX STAINLESS STEEL
17	768515	768515	2	FW .250 X .560 X .04 SAE ZNYC
18	017038	017038	2	LW .250 MED SPRING ZNYC
19	056077	056077	2	CS .250-20 X 1.00 HX G5 ZNYC
20	024927	024927	2	NT .250-20 HX GR.5 ZNYC
21	787267	N/A	1	HONDA 16 AMP RECTIFIER
22	029876	029876	4	LW .312 INT-EXT TOOTH ZNYC
23	050161	050161	4	CS .312-18X1.750 HX G5 ZNYC
24	712372	712372	1	KEY 1/4 SQ X 0.66 LONG
25	000331	000331	1	SMALL/SHORT WIRE TIE
26	786616	786616	1	PUMPDRIVE PULLEY
27	785204	785204	1	CLUTCH WIRE HARNESS PIGTAIL
28	784835	784835	1	FASTRAK CLUTCH
29	784918	784918	1	RUBBER BUMPER
30	763417	763417	1	FW .454 X 1.50 X .250
31	785048	785048	1	CS .437-20 X 3.00 HX G5 ZNYC
32	378273	378273	1	16HP EXHAUST HEAT SHIELD
33	043570	043570	1	SINGLE HOSE CLIP

NOTES:

1. Part of item 11 (786178 FasTrak 16 Honda Wire Harness).
2. Torque to 45-48 ft-lb. Use Loctite® 242 on threads.
3. Engine oil capacity; 1.37 US qts. (with filter), 1.22 US qts. (w/o filter), see engine manual.
4. Coat ID with anti sieze.
5. Engine speed; High speed - 3450 ±50 RPM.

Briggs & Stratton Engine Installation



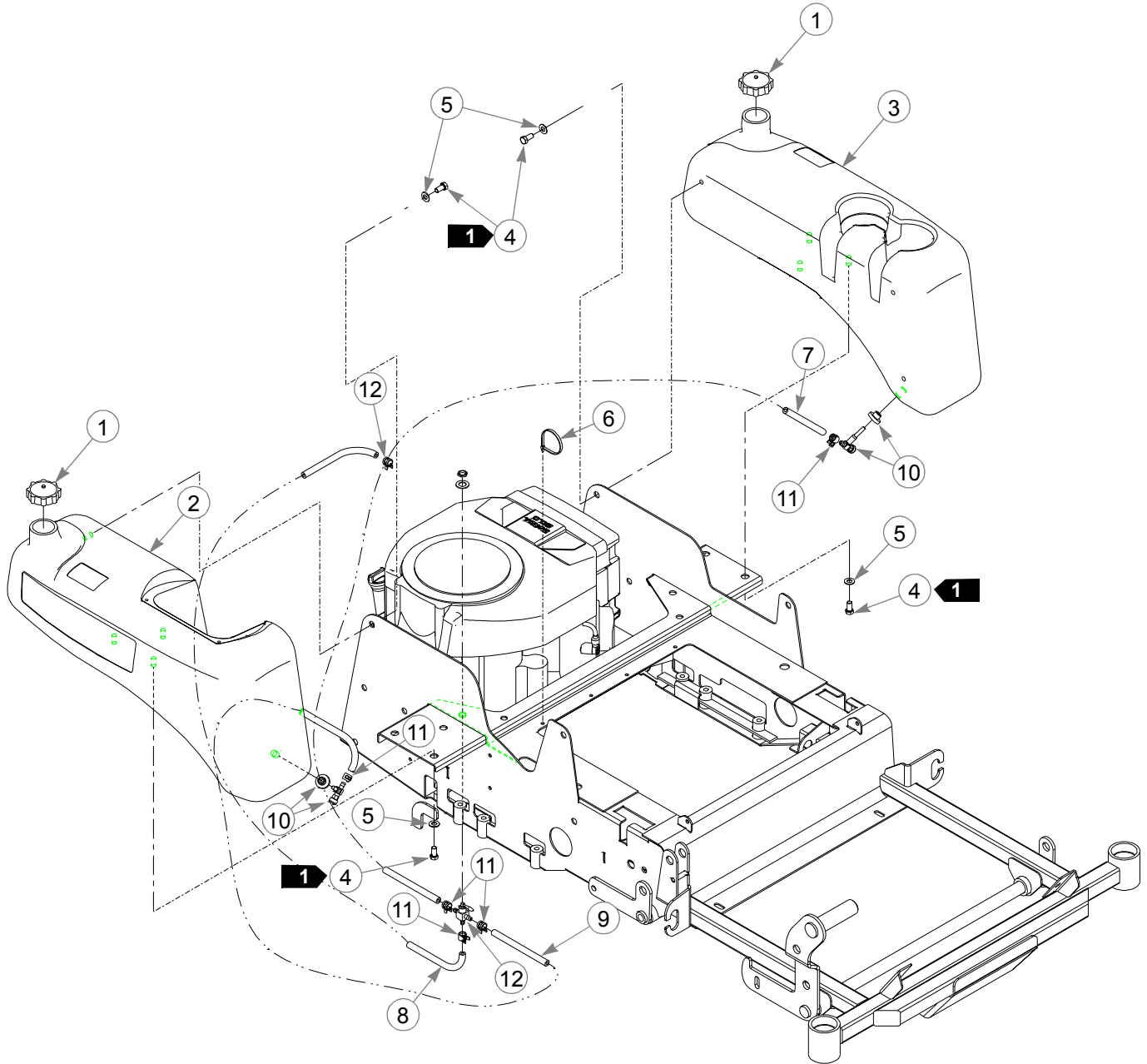
Briggs & Stratton Engine Installation

INDEX NO.	SERVICE PART NO.	MFG. PART NO.	QTY.	DESCRIPTION
1	786004	786004	1	BRIGGS 17.5 HP ELS SINGLE ENGINE
2	780841	780841	1	MUFFLER GASKET
3	786012	786012	1	17.5 HP BRIGGS MUFFLER MANIFOLD
4	016287	016287	2	CS .312-18 X 1.00 HXFLK ZNYC
5	785410	785410	1	MUFFLER
6	034280	034280	2	CS .312-18 X .75 HX G5 ZNYC
7	768523	768523	5	FW .343 X .687 X .051/.080 HD ZNYC
8	785378	785378	1	1.50" MUFFLER CLAMP
9	034272	034272	6	NT .312-18 HX G5 ZNYC
10	786954	786954	1	FITTING 90, -6MPT/-6FPT
11	771378	771378	1	16.00" PUSHLOC HYDRO HOSE
12	029876	029876	4	LW .312 INT-EXT TOOTH ZNYC
13	050161	050161	4	CS .312-18X1.750 HX G5 ZNYC
14	712927	712927	4	FW .344 X 1.00 X .12 HRD ZNYC
15	000331	000331	1	SMALL, SHORT WIRE TIE
16	785204	785204	1	CLUTCH PIGTAIL WIRE HARNESS
17	712372	712372	1	1/4 SQ X 0.66 LONG KEY
18	786616	786616	1	PUMPDRIVE PULLEY
19	784835	784835	1	FASTRAK CLUTCH
20	784918	784918	1	RUBBER BUMPER
21	763417	763417	1	FW .454 X 1.50 X .250
22	785048	785048	1	CS .437-20 X 3.00 HX G5 ZNYC
23	785071	N/A	1	NEGATIVE BATTERY CABLE
24	786186	786186	1	FASTRAK 17.5 WIRE HARNESS
25	768820	768820	1	BATTERY CABLE
26	768515	768515	7	FW .281 X .625 X .051/.080HD ZNYC
27	024927	024927	5	NT .250-20 HX GR.5 ZNYC
28	055947	055947	2	CS .250-20 X .500 HX G5 ZNYC
29	044255	044255	1	NT #10-32 HX ZN
30	786632	N/A	1	POSITIVE BATTERY CABLE
31	030817	030817	1	STARTER SOLENOID

NOTES:

1. Part of Item 24 (786186 FasTrak 17.5 HP B & S Wire Harness).
2. Connect to Item 24 (786186 FasTrak 17.5 HP B & S Wire Harness).
3. Torque to 45-48 ft-lb. Use Loctite® 242 on threads.
4. Engine oil capacity; 1.5 US qts. (see engine manual).
5. Engine speed; High speed - 3450 ±50 RPM.
6. Coat ID with anti sieze.

Fuel System Installation



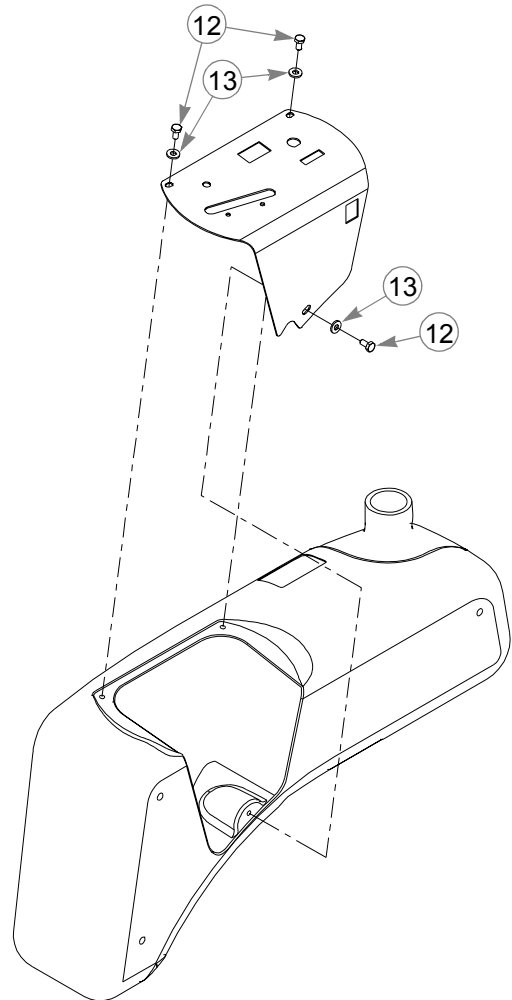
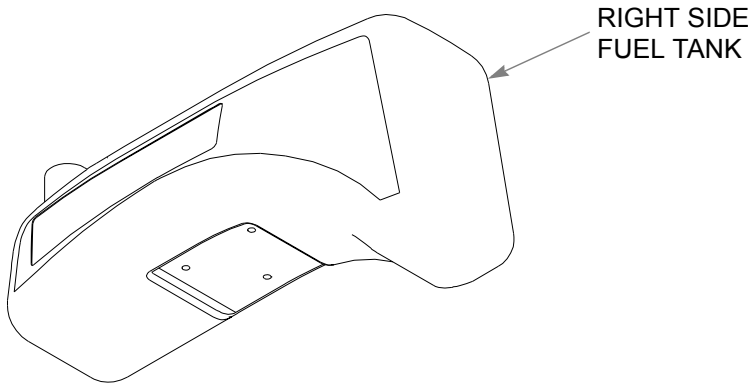
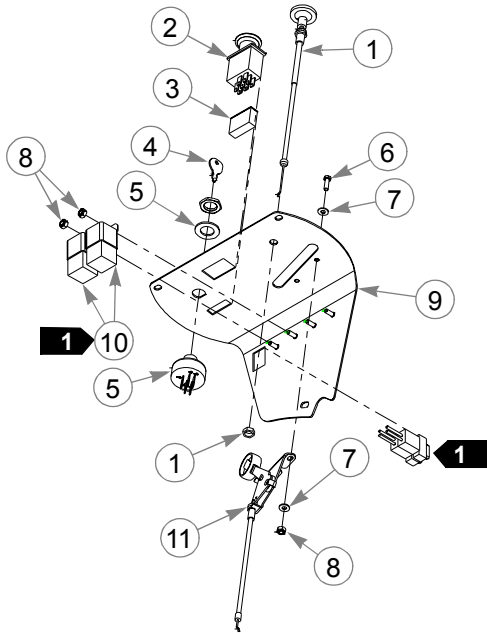
Fuel System Installation

INDEX NO.	SERVICE PART NO.	MFG. PART NO.	QTY.	DESCRIPTION
1	784181	784181	2	FUEL TANK CAP
2	785089	785089	1	R.S. FUEL TANK
3	785105	785105	1	L.S. FUEL TANK
4	055822	055822	12	CS .375-16 X .750 HX G5 ZNYC
5	767954	767954	12	FW .406 X .812 X .060 SAE HD ZN
6	000331	000331	5	SMALL/SHORT WIRE TIE
7	015818	015818	1	FUEL LINE, 33"
8	015818	015818	1	FUEL LINE, 35" 3
	015818	015818	1	FUEL LINE, 21" 4
	015818	015818	1	FUEL LINE, 14"
2	791277	N/A	2	FUEL TANK 90° FITTING
	000323	000323	6	CLIP
	745059	745059	1	FUEL VALVE 3-WAY

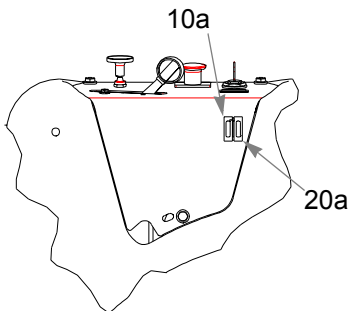
NOTES:

1. Torque to 20 ft.-lbs.
2. Supplied with new fuel tank.
3. Honda engines only.
4. Length for Briggs & Stratton.

Instrument Panel Assembly/Installation



FUSE SIZE AND LOCATION



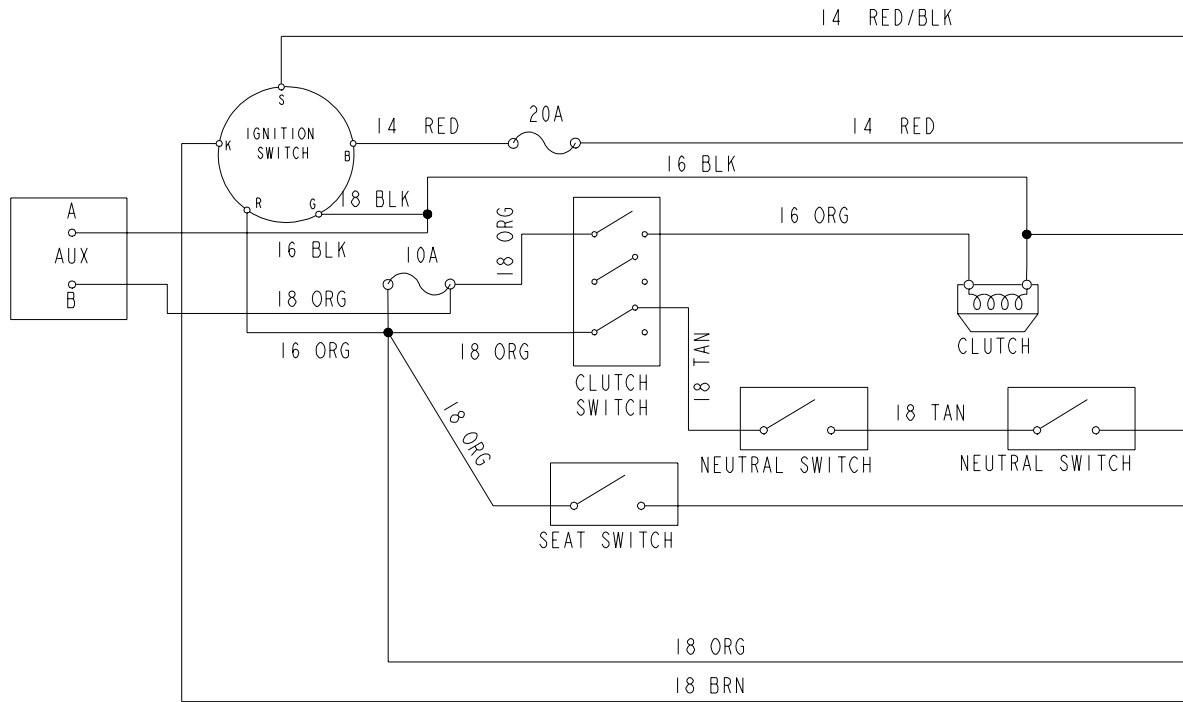
Instrument Panel Assembly/Installation

INDEX NO.	SERVICE PART NO.	MFG. PART NO.	QTY.	DESCRIPTION
1	785196	785196	1	CHOKE CABLE (HONDA 18 & 20) ENGINES)
	785030	785030	1	CHOKE CABLE (HONDA 16) ENGINE
	786657	786657	1	CHOKE CABLE (17.5 BRIGGS & STRATTON ENGINE)
2	776476	776476	1	PTO SWITCH
3	712257	712257	1	RED INDICATOR LIGHT
4	083022	N/A	1	IGNITION KEY
	785808	785808	1	INDAK COATED KEY
5	045898	045898	1	KEY SWITCH
6	714998	714998	2	MS #10-24 X .625 HX ZN
7	704932	704932	4	FW .219 X .500 X .048 ZNYC
8	059832	059832	4	NT #10-24 HX NL ZN
9	365411	365411	1	INSTRUMENT PANEL
10	026237	N/A	2	RELAY
11	768879	768879	1	ENGINE CONTROLS CABLE (HONDA 18 & 20, & 17.5 BRIGGS)
	787788	787788	1	THROTTLE CABLE ASSEMBLY (HONDA 16 ONLY)
12	055947	055947	3	CS .250-20X .500 HX G5 ZNYC
13	768515	768515	3	FW .281 X .625 X .051/.080 HD ZNYC

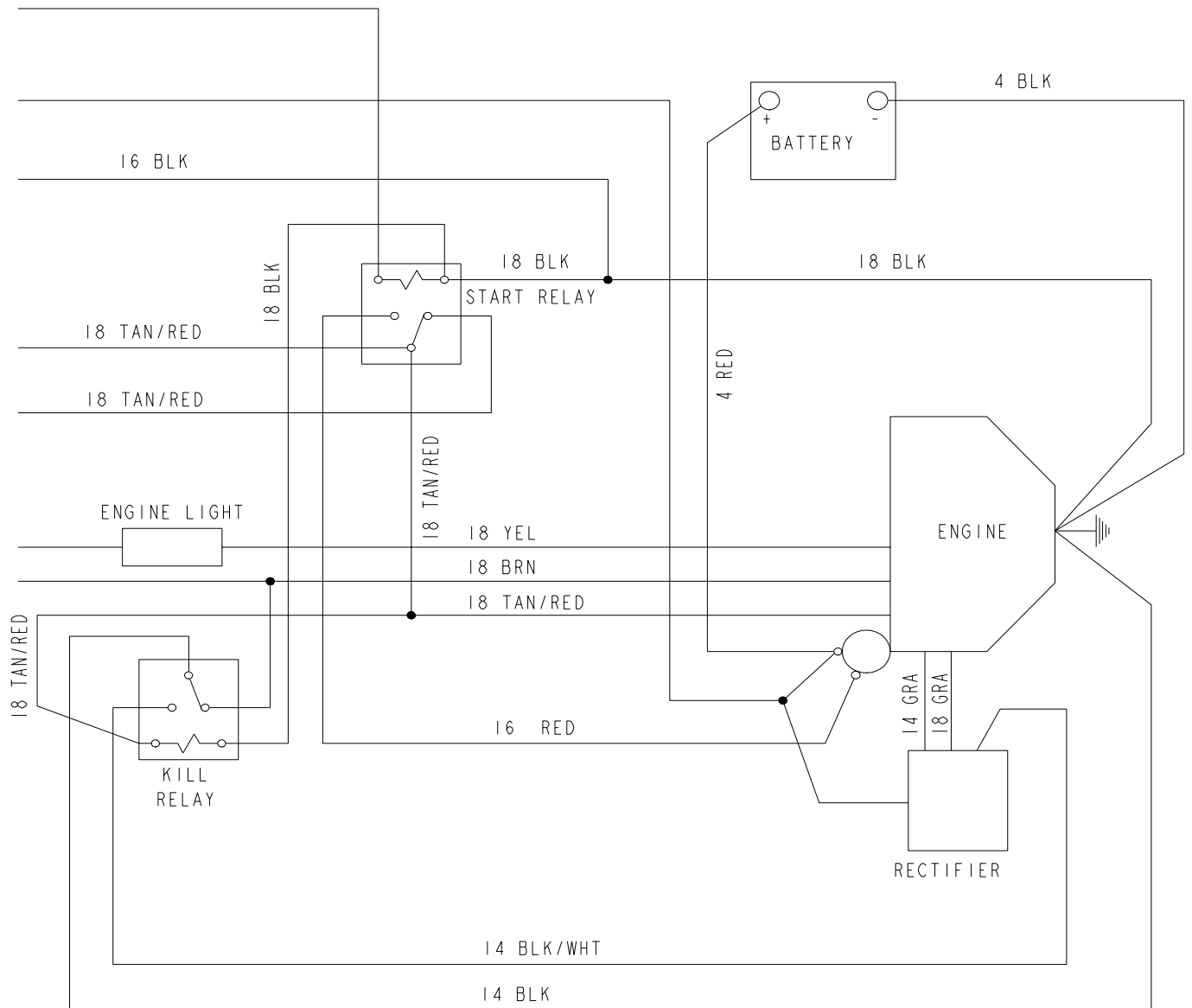
NOTES:

1. Part of 784868, 786186, or 786178 (Tractor Wire Harness).

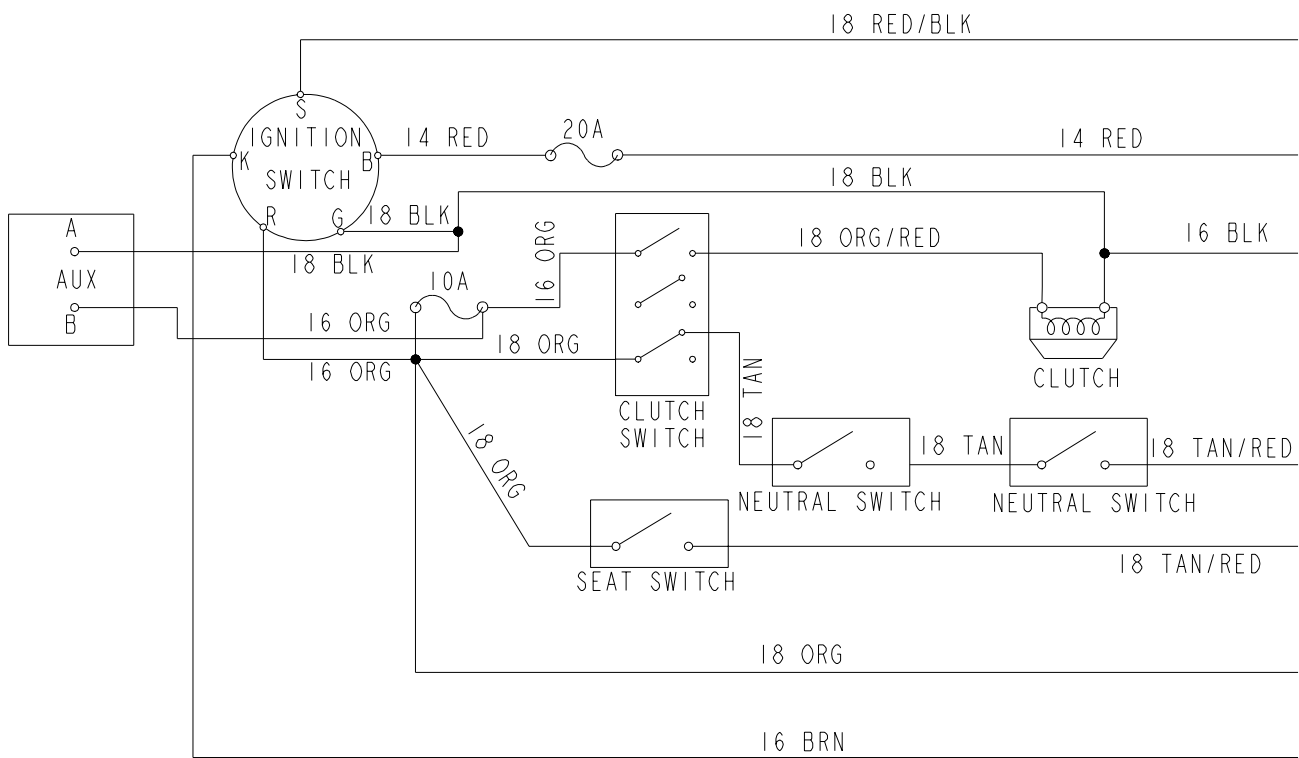
Honda 18 & 20 HP Electrical Schematic (784868)



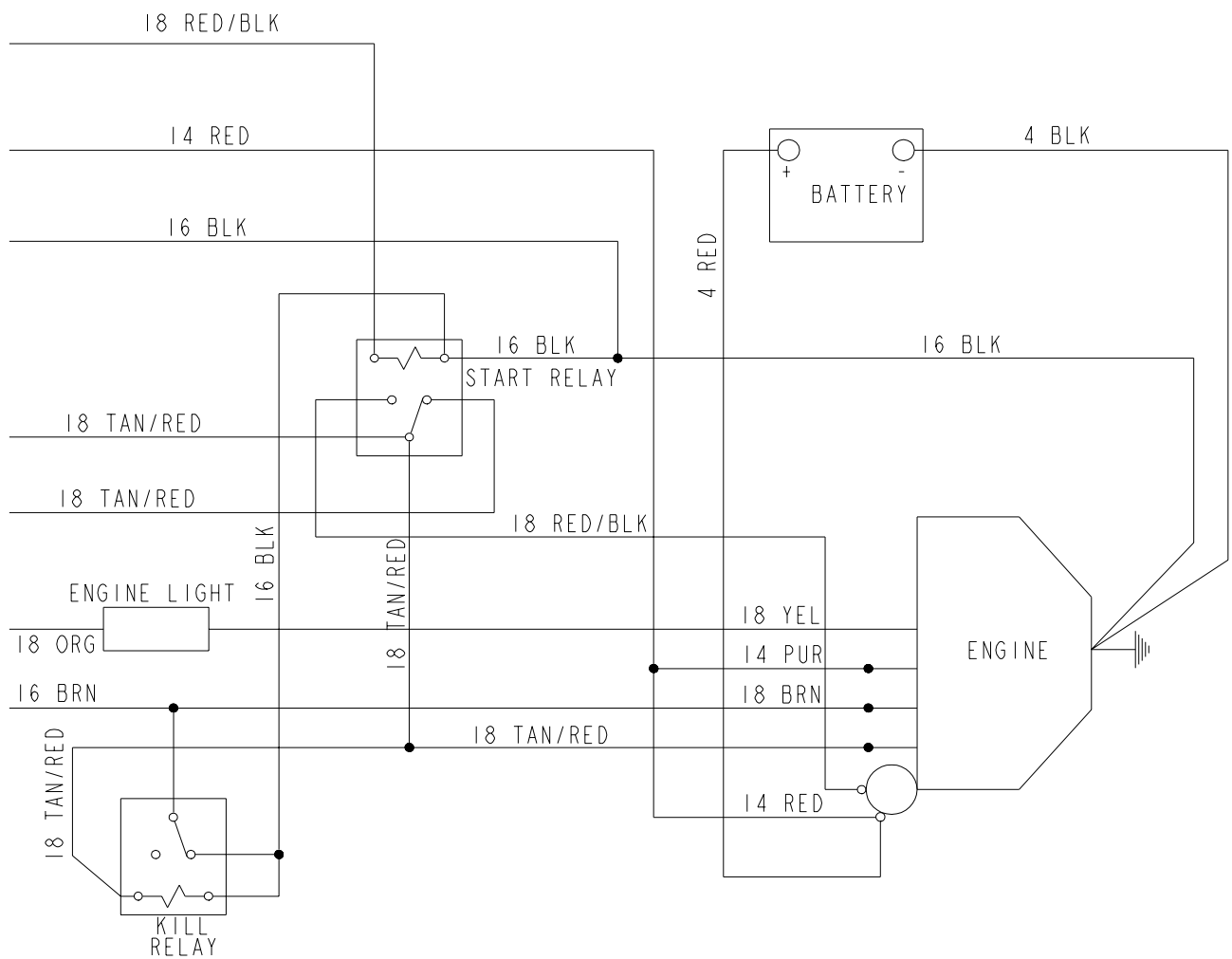
Honda 18 & 20 HP Electrical Schematic (784868)



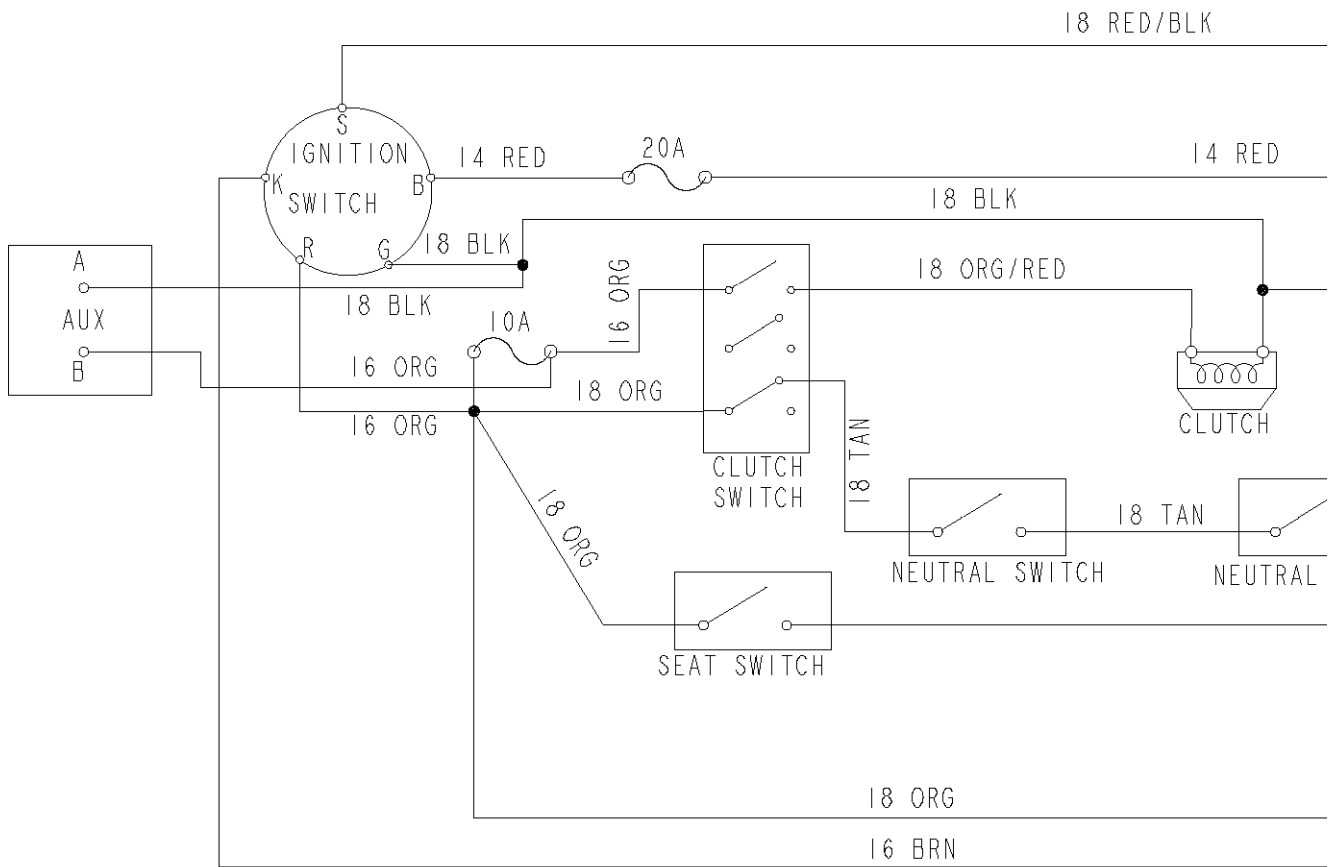
Honda 16 HP Electrical Schematic (786178)



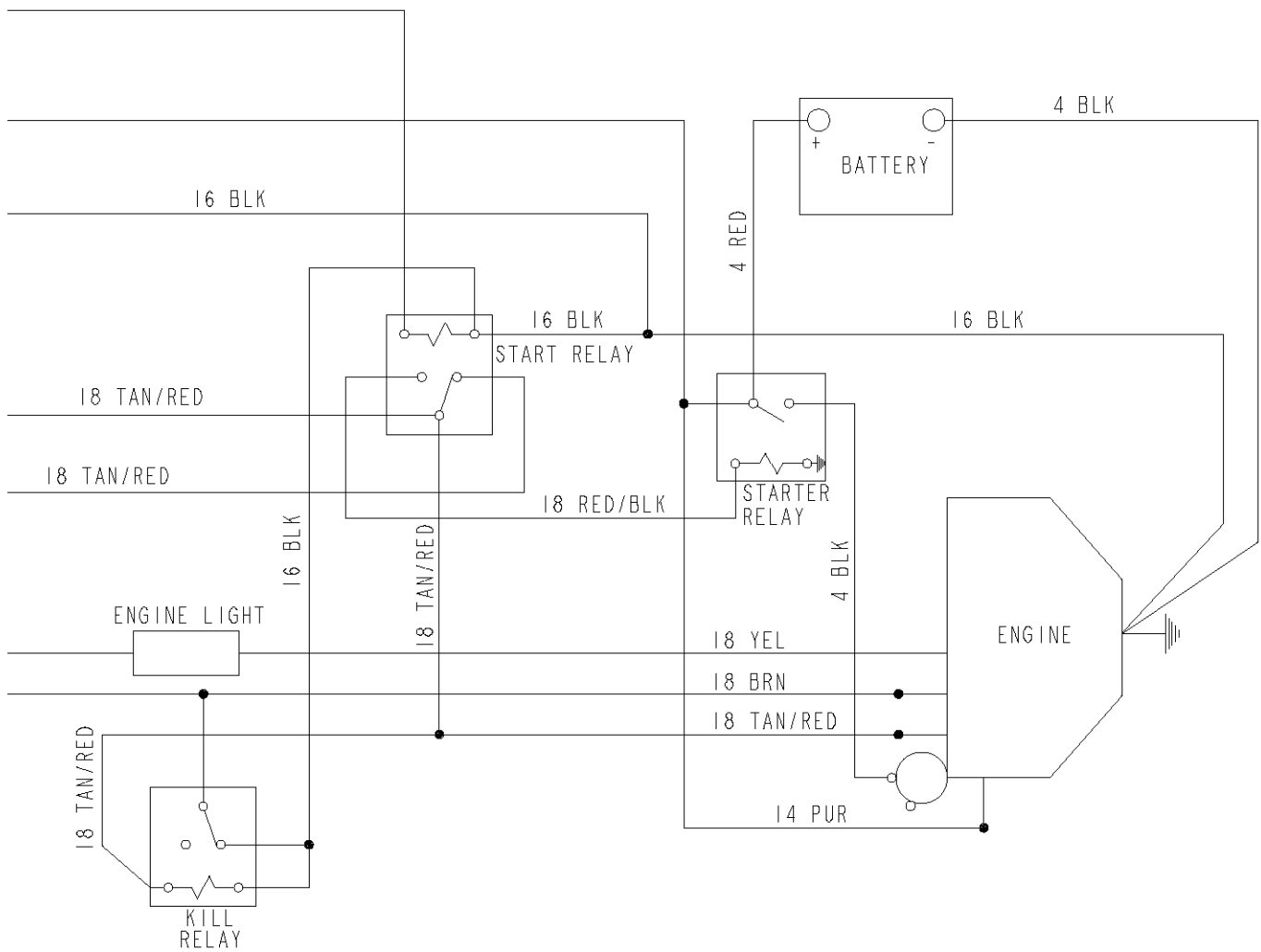
Honda 16 HP Electrical Schematic (786178)



Briggs & Stratton Electrical Schematic (786186)



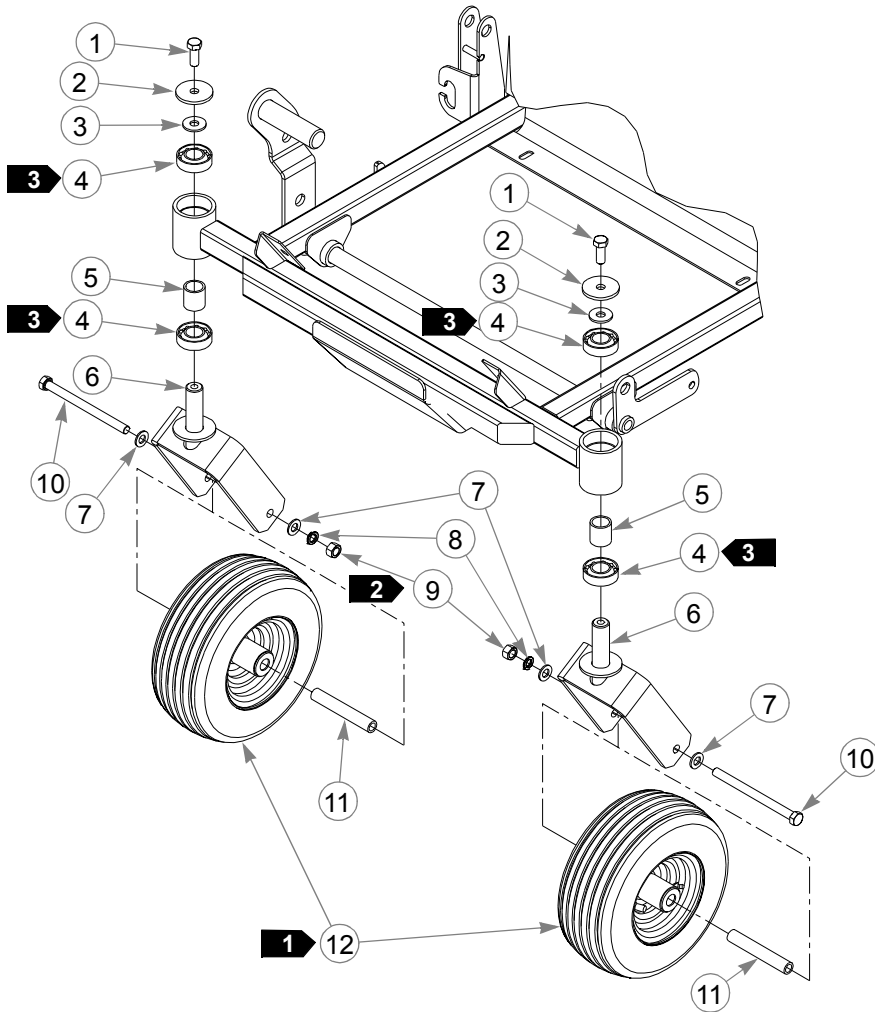
Briggs & Stratton Electrical Schematic (786186)



Chapter 5 Contents

Front Wheel Assembly	5-2
Front Wheel Breakdown 768044	5-3
Drive Wheel Assembly	5-4
Anti-Rollover Wheel Assembly	5-5

Front Wheel Assembly

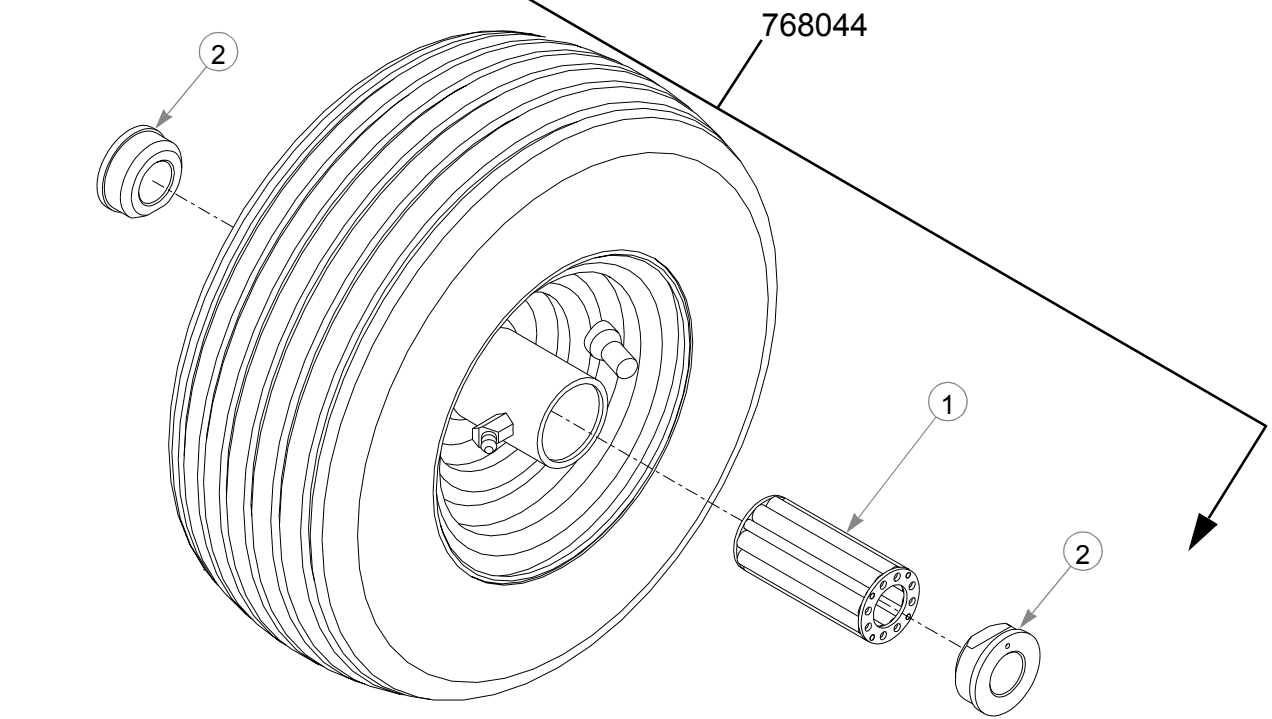


INDEX NO.	SERVICE PART NO.	MFG. PART NO.	QTY.	DESCRIPTION
1	705954	705954	2	CS .500-13 X 1.25 HX G5 ZNYC
2	344267	344267	2	FW .510 X 2.15 X .187 SPL ZNYC
3	712976	712976	2	FW .531 X 1.375 X .125 ZNYC
4	784223	784223	4	BEARING
5	784603	784603	2	SPACER
6	339689	339689	2	CASTER FORK
7	004168	004168	4	FW .50 X 1.06 X .090 SAE ZNYC
8	017046	017046	2	LW .500 MED SPRING ZNYC
9	067918	067918	2	NT .500-13 HX G8 ZNYC
10	042630	042630	2	CS .500-13 X 6.50 HX G5 ZNYC
11	306969	306969	2	GAGE WHEEL SPACER
12	768044	768044	2	TIRE/WHL 11 X 4-5 RIBBED

NOTES:

1. Apply grease to zerks.
2. Torque to 75 ft.-lbs.

Assemble with extended inner race down. **Front Wheel Breakdown 768044**

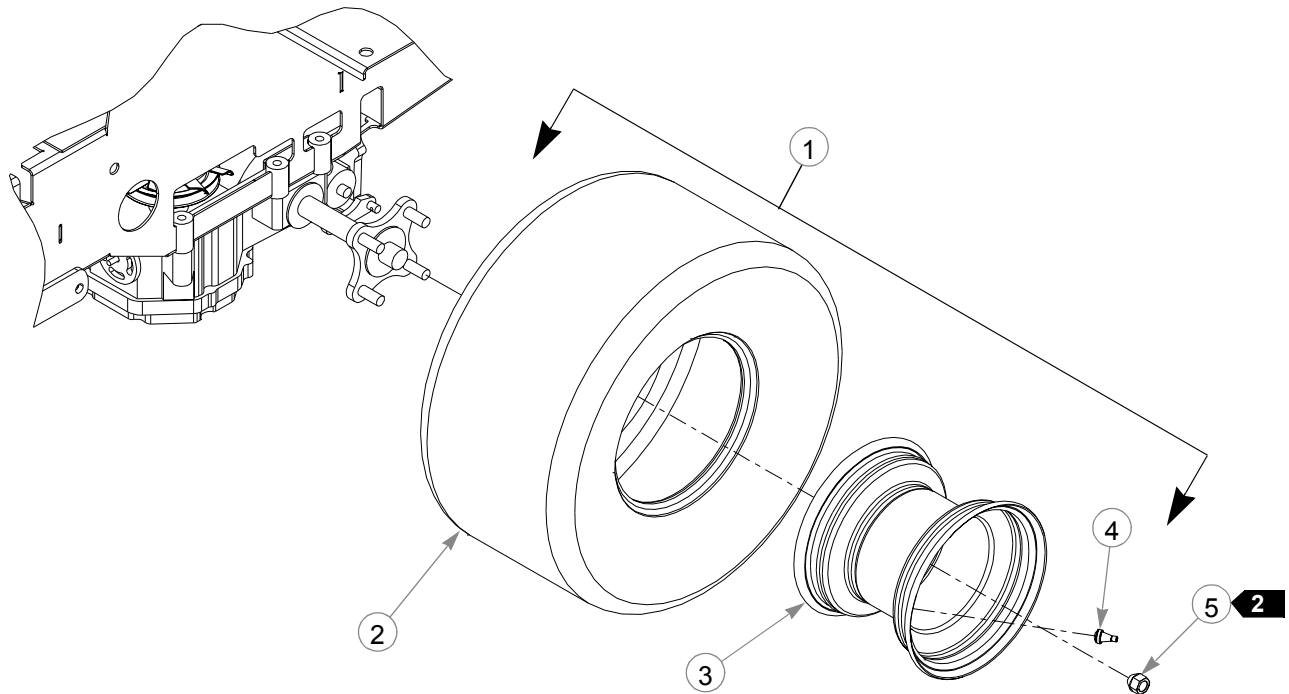


INDEX NO.	SERVICE PART NO.	MFG. PART NO.	QTY	DESCRIPTION
1	772814	N/A	1	3/4" ROLLER BEARING
2	772806	N/A	2	BEARING CAP

NOTES:

1. Inflate tire to 8-10 psi.

Drive Wheel Assembly

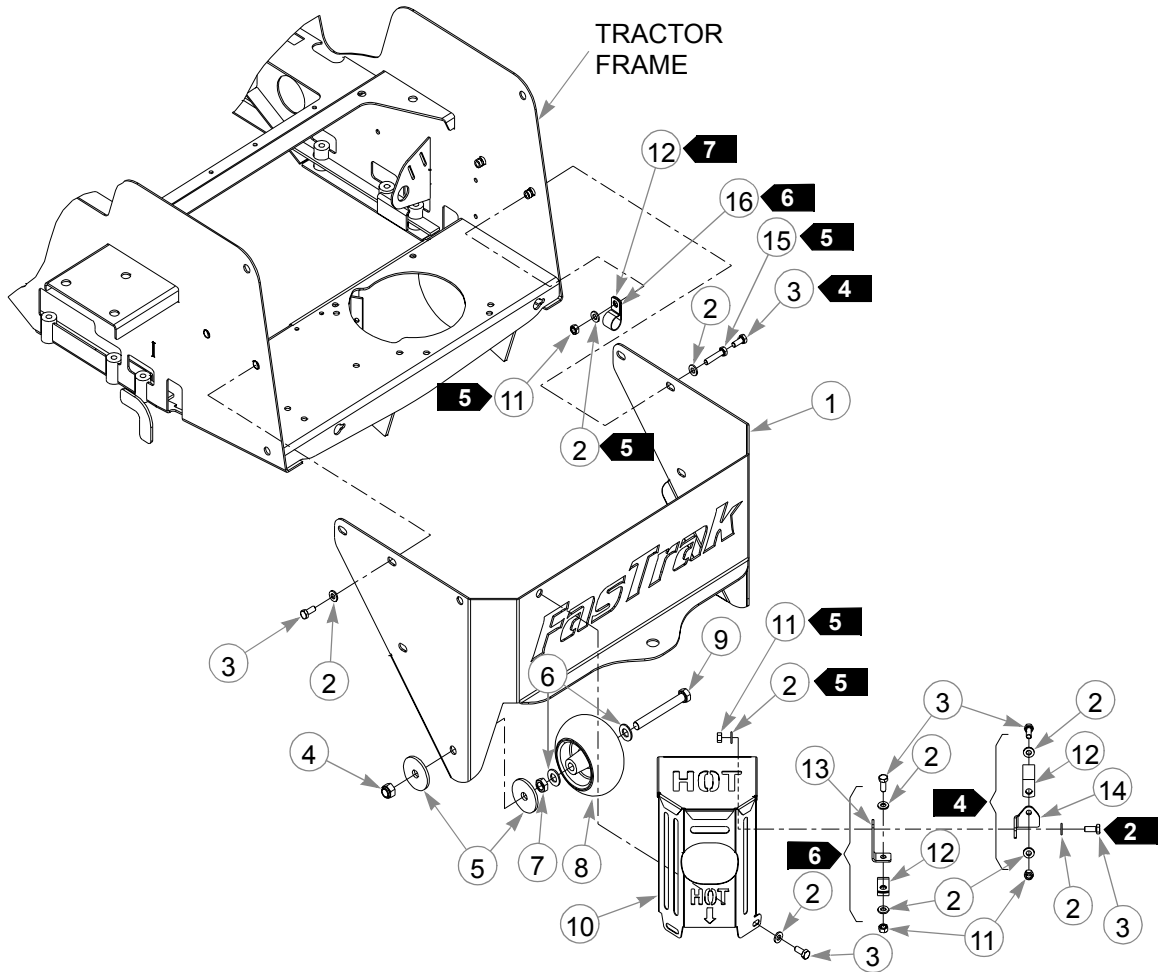


INDEX NO.	SERVICE PART NO.	MFG. PART NO.	QTY.	DESCRIPTION
1	784264	784264	2	WHEEL/TIRE ASSY 18 X 9.50 (QTY PER 52" TRACTOR)
2	784272	N/A	1	TIRE 18 X 9.5
3	784280	N/A	1	WHEEL
4	019521	N/A	1	TIRE VALVE
5	061077	061077	4	WHEEL NUT (QTY PER WHEEL)
1	783134	783134	2	WHEEL/TIRE ASSY 18 X 8.50 (QTY PER 44" TRACTOR)
2	783142	N/A	1	TIRE 18 X 8.50
3	783159	N/A	1	WHEEL
4	019521	N/A	1	TIRE VALVE
	061077	061077	4	WHEEL NUT (QTY PER WHEEL)

NOTES:

1. Inflate tire to 8-10 psi.
2. Torque to 65 ft-lbs.

Anti-Rollover Wheel Assembly



INDEX NO.	SERVICE PART NO.	MFG. PART NO.	QTY.	DESCRIPTION
1	364885	N/A	1	ENGINE GUARD
2	768523	768523	9	FW .343 X .687 X .051/.080HD ZNYC
3	034280	034280	9	CS .312-18 X .750 HX G5 ZNYC
4	781567	781567	2	NT .50-13 HX LK NY
5	344267	344267	4	FW .510X 2.15X.187 SPL ZNYC
6	767962	N/A	4	FW .531 X 1.063 X .090 SAE HD ZN
7	053199	N/A	2	NT .500-13 HX JAM ZNYC
8	031997	N/A	2	ANTI-SCALP WHEEL
9	781708	N/A	2	CS .500-13 X 4.250 HX G5 ZNYC
10	365478	365478	1	MUFFLER GUARD
11	034272	034272	2	NT .312-18 HX G5 ZNYC
12	000398	000398	1	CLAMP
13	378703	378703	1	CHOKE & THROTTLE CABLE BRACKET
14	377242	377242	1	FUEL LINE MOUNTING BRACKET
15	756270	756270	1	CS .312-18 X 1.50 FLTHR GR5 ZNYC
16	043570	043570	1	SINGLE HOSE CLIP
3	788166	788166	2	ANTI SCALP WHEEL ASSEMBLY

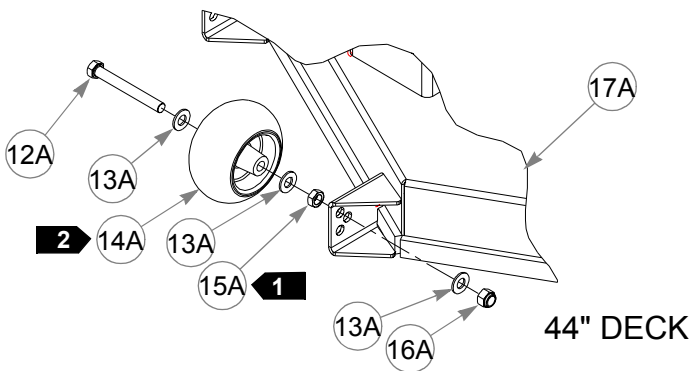
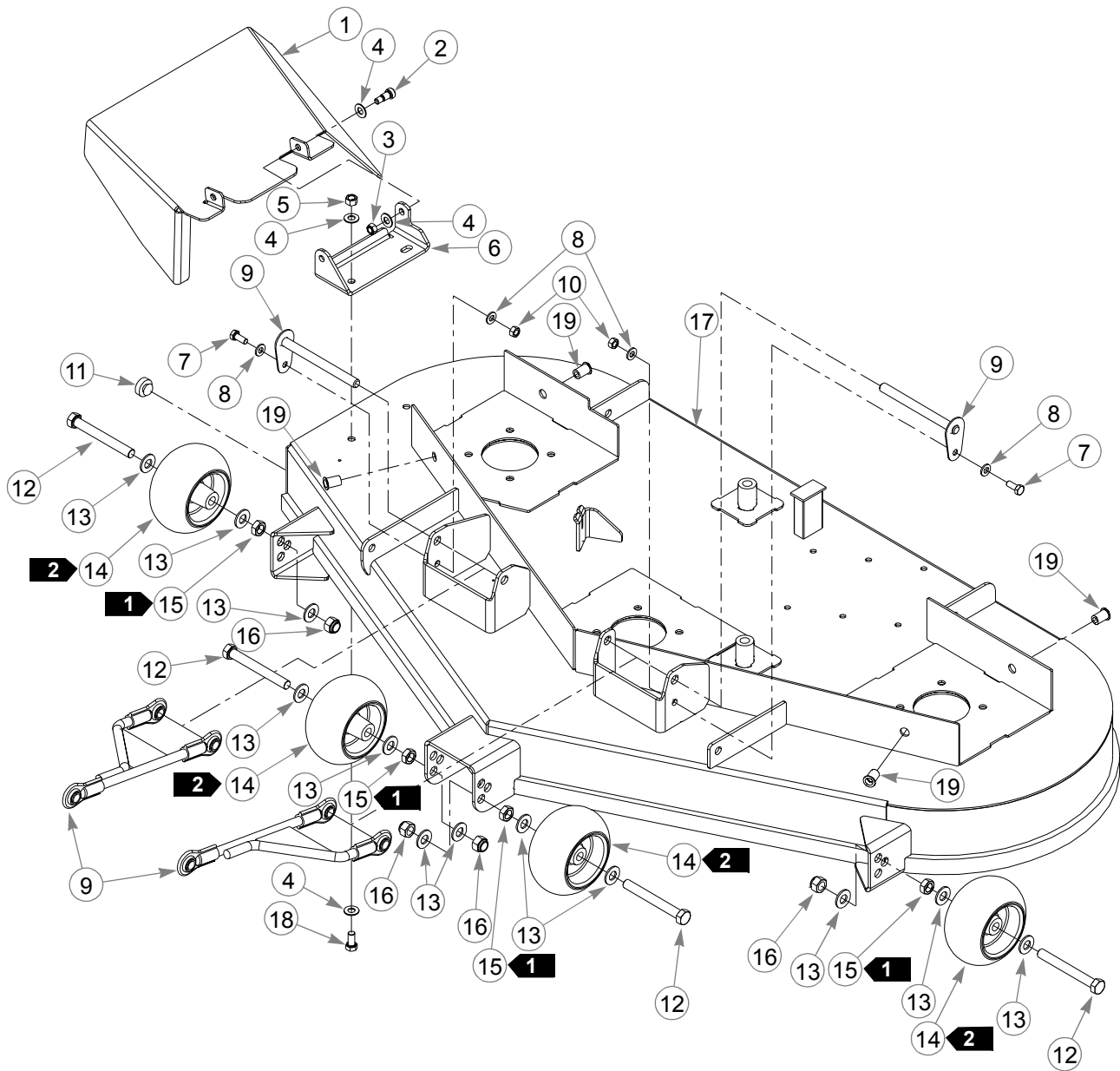
NOTES:

1. Tighten Item 7 (053199 Nt .500-13 Hx Jam ZNYC) against Item 1 (364885 Engine Guard) to lock Item 9 (781708 CS .500-13 X 4.25 Hx G5 ZNYC) in place. Item 8 (031997 Anti-Scalp Wheel) must turn freely.
2. Bolts to muffler bracket for 18 & 20 HP Honda engines and to item 11 for 16 HP Honda and 17.5 HP Briggs engines.
3. Includes Items 6 through 9.
4. Used on 18 & 20 HP Honda only.
5. Used on 16 HP Honda and 17.5 HP Briggs only..
6. Used on 16 HP Honda only.
7. Used on 17.5 HP Briggs only.

Chapter 6 Contents

Deck Assembly	6-2
Deck Pulley Assembly	6-4
Blade Spindle Assembly Breakdown	6-6

Deck Assembly



Deck Assembly

INDEX NO.	SERVICE PART NO.	MFG. PART NO.	QTY.	DESCRIPTION
	357111	357111	1	FASTRAK DISCHARGE CHUTE
	063297	063297	2	SB .375 X .500 SH .312-18 TD ZNYC
	058776	058776	2	NT .312-18 HX NL ZNYC
	767954	767954	8	FW .406 X .812 X .060 SAE HD ZN
	054502	054502	2	NT .375-16 HX GRD 5 ZNYC
	357103	357103	1	DISCHARGE CHUTE MOUNT BRACKET
	034280	034280	2	CS .312-18 X .750 HX G5 ZNYC
	768523	768523	4	FW .343 X .687 X .051/.080HD ZNYC
7	787994	787994	2	DECK PIN & ROD ASSEMBLY
	034272	034272	2	NT .312-18 HX G5 ZNYC
	781880	781880	1	.500X 1.00X .312 X.188 BUMPER
	781708	N/A	4	CS .500-13 X 4.250 HX G5 ZNYC
5	12a	781708	3	CS .500-13 X 4.250 HX G5 ZNYC
	767962	N/A	12	FW .531 X 1.063 X.090 SAE HD ZN
5	13a	767962	9	FW .531 X 1.063 X.090 SAE HD ZN
	031997	N/A	4	ANTI-SCALP WHEEL
5	14a	031997	3	ANTI-SCALP WHEEL
	053199	N/A	4	NT .50-13 HX JAM ZNYC
5	15a	053199	3	NT .50-13 HX JAM ZNYC
	781567	781567	4	NT .50-13 HX LK NY
5	16a	781567	3	NT .50-13 HX LK NY
6	17	545970	1	52" FASTRAK DECK
6	17a	546051	1	44" FASTRAK DECK
3		788166	4	ANTI SCALP WHEEL ASSEMBLY
	055822	055822	2	CS .375-16 X .750 HX G5 ZNYC
4	19	N/A	4	5/16-18 THREAD RIVET NUT

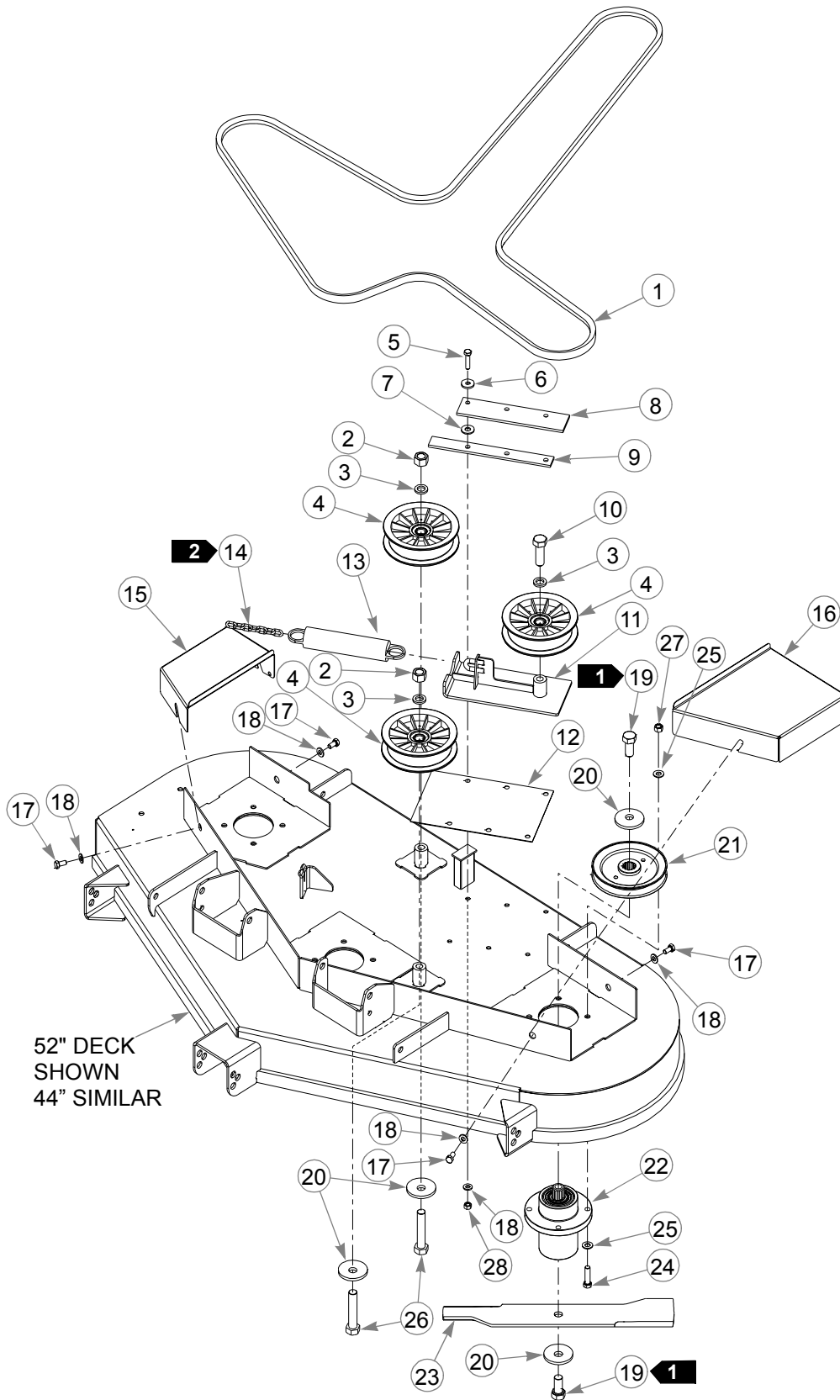
NOTES:

- Secure Item 15 (053199 Jam Nut) to bolt with a drop of Loctite (271Red). Tighten Item 15 (053199 Jam Nut) to shank of Item 12 (781708 Cs .50-13 x 4.25 Hx G5 ZNYC). Anti-scalp wheel must turn freely.
- Factory assembled in top hole for shipping purposes.
- Includes items 12(A) through 15(A).
- Quantity of 3 on 44" deck.
- These quantities for 44" Deck assembly.
- When ordering replacement decks, also order 6 each of Items 5, 6, and 7, 2 each of Item 8 and 9, and 1 each of item 12, from Deck Pulley Assembly. Replacement decks include decals, see "52" Deck Decals" on page 8-4 and "44" Deck Decals" on page 8-5.
- Includes one each of:

784736 DECK PULL ROD ASSY

362988 DECK PIN

Deck Pulley Assembly



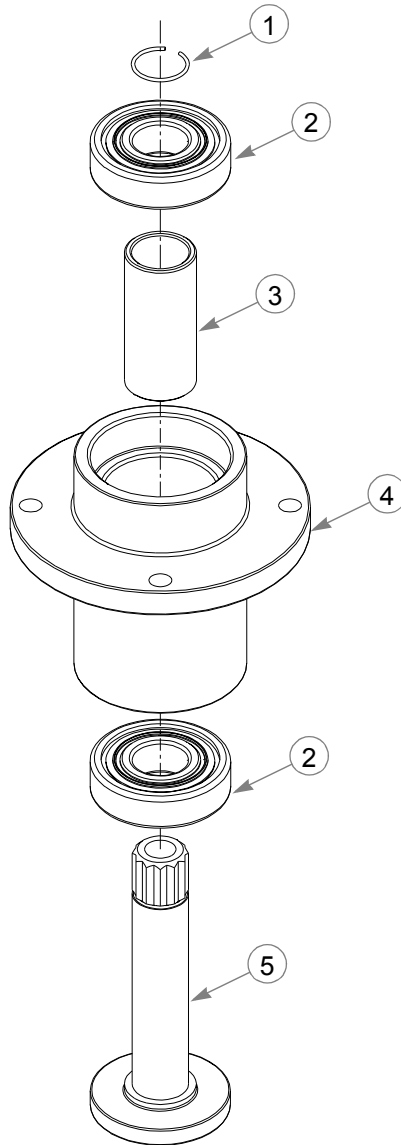
Deck Pulley Assembly

INDEX NO.	SERVICE PART NO.	MFG. PART NO.	QTY.	DESCRIPTION
1	784249	784249	1	B-SECTION BELT (52" DECKS)
1	784322	784322	1	B-SECTION BELT (44" DECKS)
2	016972	016972	2	NT .625-11 HX G5 ZNYC
3	028118	028118	3	FW .62 X 1.00 X.134 ZNYC
4	784504	784504	3	5.00" OD, 5/8" ID IDLER PULLEY
3	079186	079186	6	CS .312-18 X 1.25 HX G5 ZNYC
4	784199	N/A	6	CS .312-18 X1.25 FLT SH ZNYC
3	712927	712927	6	FW .344 X 1.00 X.12 HRD ZNYC
3	017129	017129	6	FW .440 X 1.000 X .083 ZNYC
3	785832	785832	2	UHMW DECK IDLER CLAMP
4	783878	N/A	2	UHMW IDLER CLAMP
5	787069	787069	2	UHMW DECK IDLER RISER
3	025007	025007	1	CS .625-11 X 1.75 HX G5 ZNYC
11	358317	358317	1	DECK IDLER
5	786335	786335	1	UHMW (.03 THICK)
13	781302	781302	1	IDLER SPRING
14	364315	364315	1	SPRING CHAIN
15	361147	361147	1	52" R.S. PULLEY COVER
15	360792	360792	1	44" R.S. PULLEY COVER
16	361154	361154	1	52" L.S. PULLEY COVER
16	360818	360818	1	44" L.S. PULLEY COVER
17	064006	064006	4	CS .312-18 X .625 HX G5 ZNYC
18	768523	768523	10	FW .343 X.687 X .051/.080HD ZNYC
19	781872	781872	6	CS .625-11 X 1.25 HX G5 ZNYC
20	782474	782474	8	CW .631 2.250 X .187 PNT
21	783571	783571	3	STAR HUB DECK DRIVE PULLEY
22	783506	783506	3	BLADE SPINDLE ASSEMBLY
23	783753	783753	3	18" X 2.50 X 0.204 .631 DIA BLADE (52" DECKS)
23	784256	784256	3	16" X 2.50 X 0.204 .631 DIA BLADE (44" DECKS)
24	005116	005116	12	CS .375-16 X 1.375 HX G5 ZNYC
25	767954	767954	24	FW .406 X .812 X .060 SAE HD ZN
26	783738	783738	2	CS .625-11X3.00 FULL HX G5 ZN
27	054502	054502	12	NT .375-16 HX GRD 5 ZNYC
28	034272	034272	6	NT .312-18 HX G5 ZNYC

NOTES:

1. Torque to 118 ft. lbs.
2. See "Deck Belt Routing and Tensioning" on page 7-3 for belt tensioning.
3. Used on mowers with serial number 02017202 and later.
4. Used on mowers with serial number prior to 02017202.
5. Used on mowers with serial number 02057459 and later.

Blade Spindle Assembly Breakdown



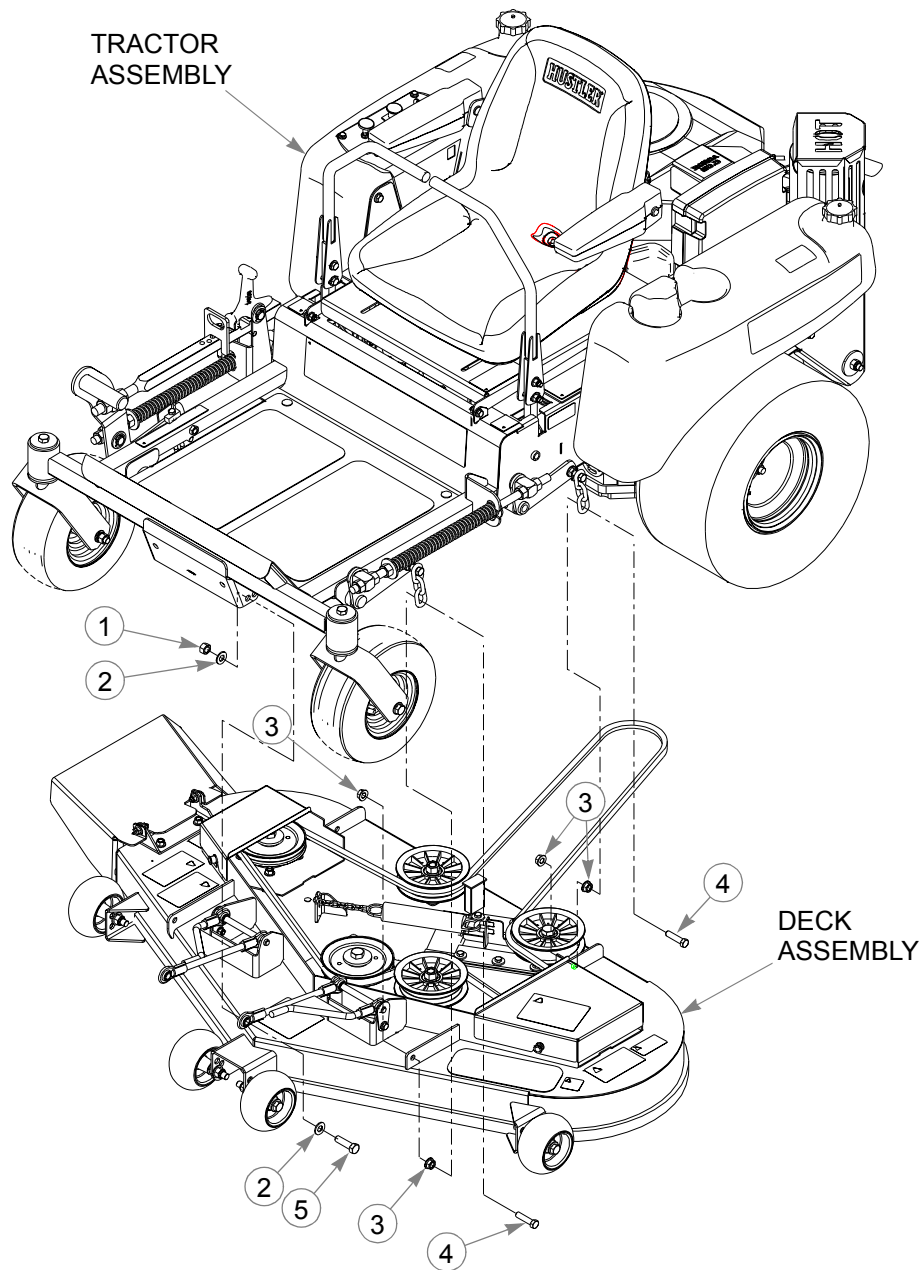
INDEX NO.	SERVICE PART NO.	MFG. PART NO.	QTY.	DESCRIPTION
1	783548	783548	1	BLADE SPINDLE RETAINING RING
2	783555	783555	2	BLADE SPINDLE BEARING
3	783530	783530	1	BLADE SPINDLE SPACER
4	783514	783514	1	BLADE SPINDLE HOUSING
5	783522	783522	1	BLADE SPINDLE SHAFT

NOTES:

Chapter 7 Contents

Deck Installation	7-2
Deck Belt Routing and Tensioning.....	7-3
Seat Installation	7-4

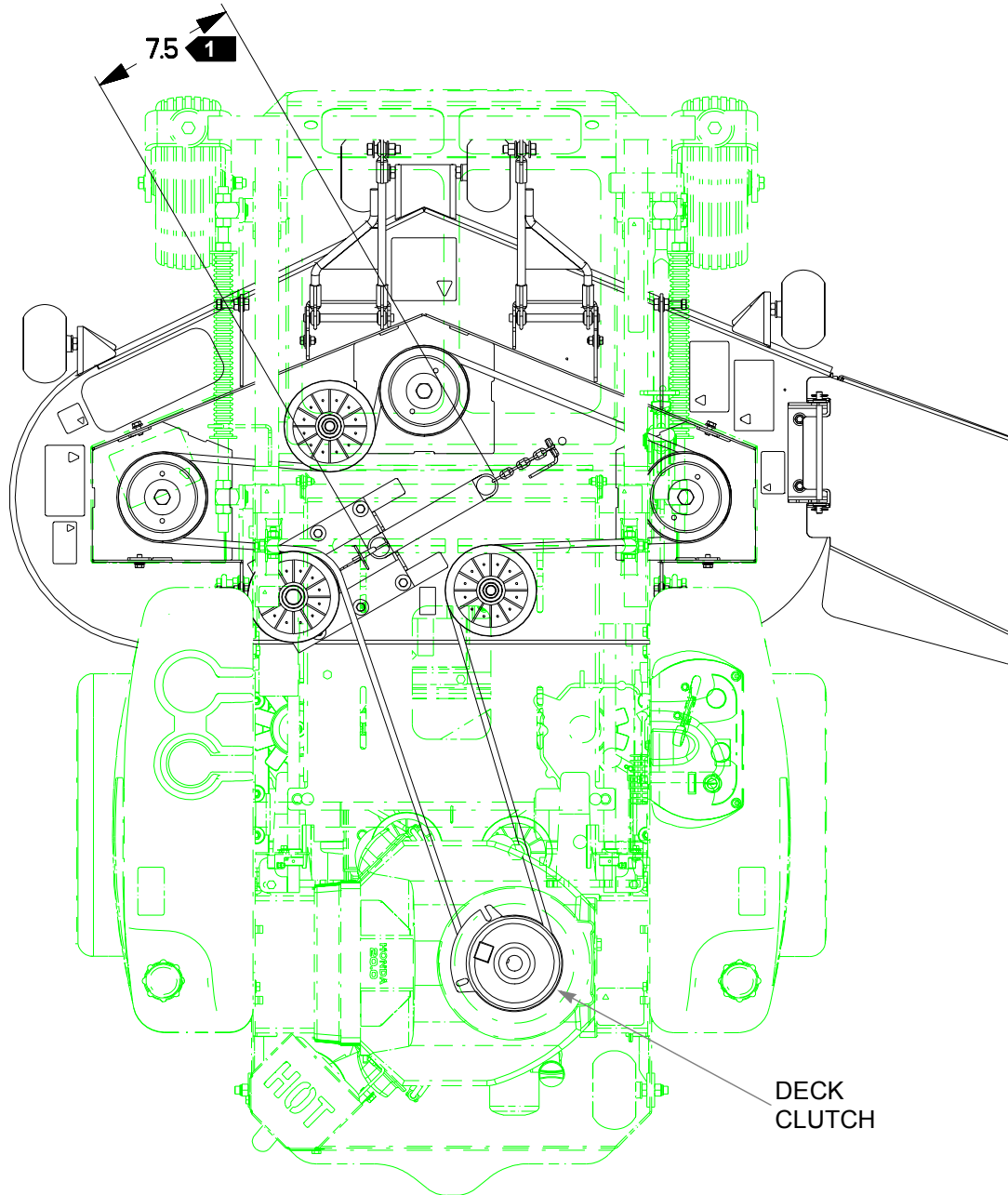
Deck Installation



INDEX NO.	SERVICE PART NO.	MFG. PART NO.	QTY.	DESCRIPTION
1	008193	008193	2	NT .500-13 HX G5 ZNYC
2	767962	767962	4	FW .531 X 1.063 X .090 SAE HD ZN
3	704643	704643	8	NT .437-14 HX FLG ZN
4	055749	055749	4	CS .437-14 X 1.750 HX G5 ZNYC
5	017616	017616	2	CS .500-13 X 1.750 HX G5 ZNYC

NOTES:

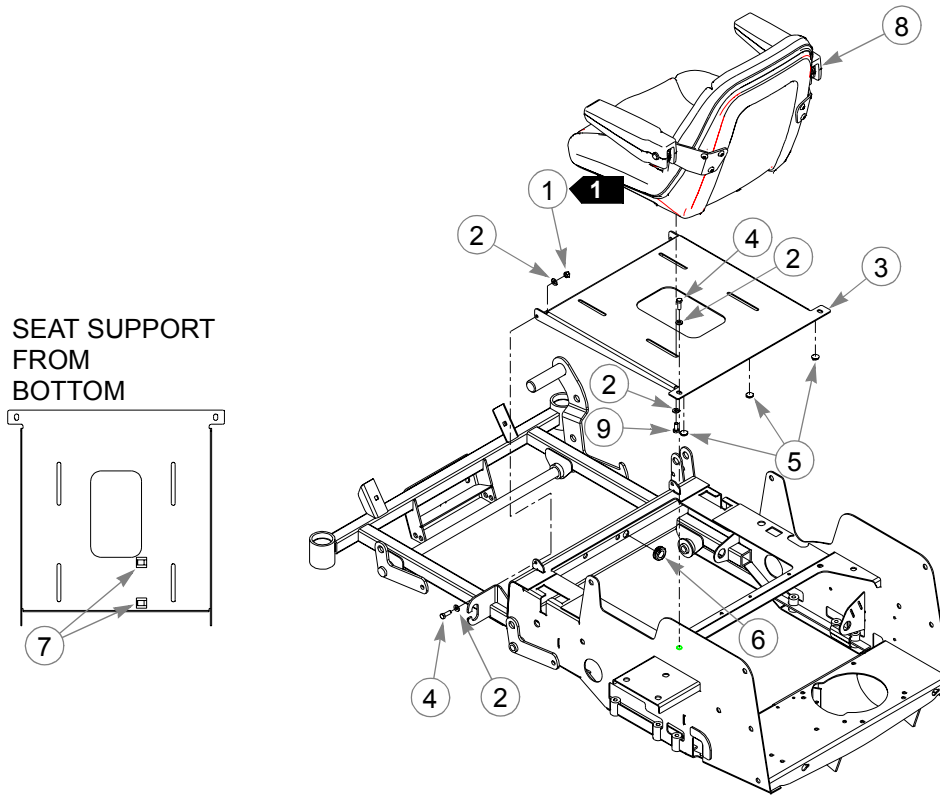
Deck Belt Routing and Tensioning



NOTES:

1. Spring length after tensioning belt
2. Route Belt as shown.

Seat Installation



INDEX NO.	SERVICE PART NO.	MFG. PART NO.	QTY.	DESCRIPTION
1	058776	058776	2	NT .312-18 HX NL ZNYC
2	768523	768523	10	FW .343 X .687 X .051/.080HD ZNYC
3	363507	363507	1	SEAT SUPPORT
4	064014	064014	4	CS .312-18 X .875 HX G5 ZNYC
5	781617	781617	3	RUBBER BUMPER
6	080358	080358	1	GM .50 X 1.00 X .75 X .12
7	047654	047654	2	CLIP
8	792226	792226	1	SEAT
9	034280	034280	4	CS .312-18X .750 HX G5 ZNYC

NOTES:

1. Do not torque, Item 3 (363507 Seat Support) must pivot.

2. Service parts (Mighigan Seat):

793315	SWITCH-SNAP KIT
784850	MILSCO XB-180 ARM REST KIT
793331	EXT. ARMREST KIT
793349	ARMREST ASSMBLY L.H.
793356	ARMREST ASSMBLY R.H.

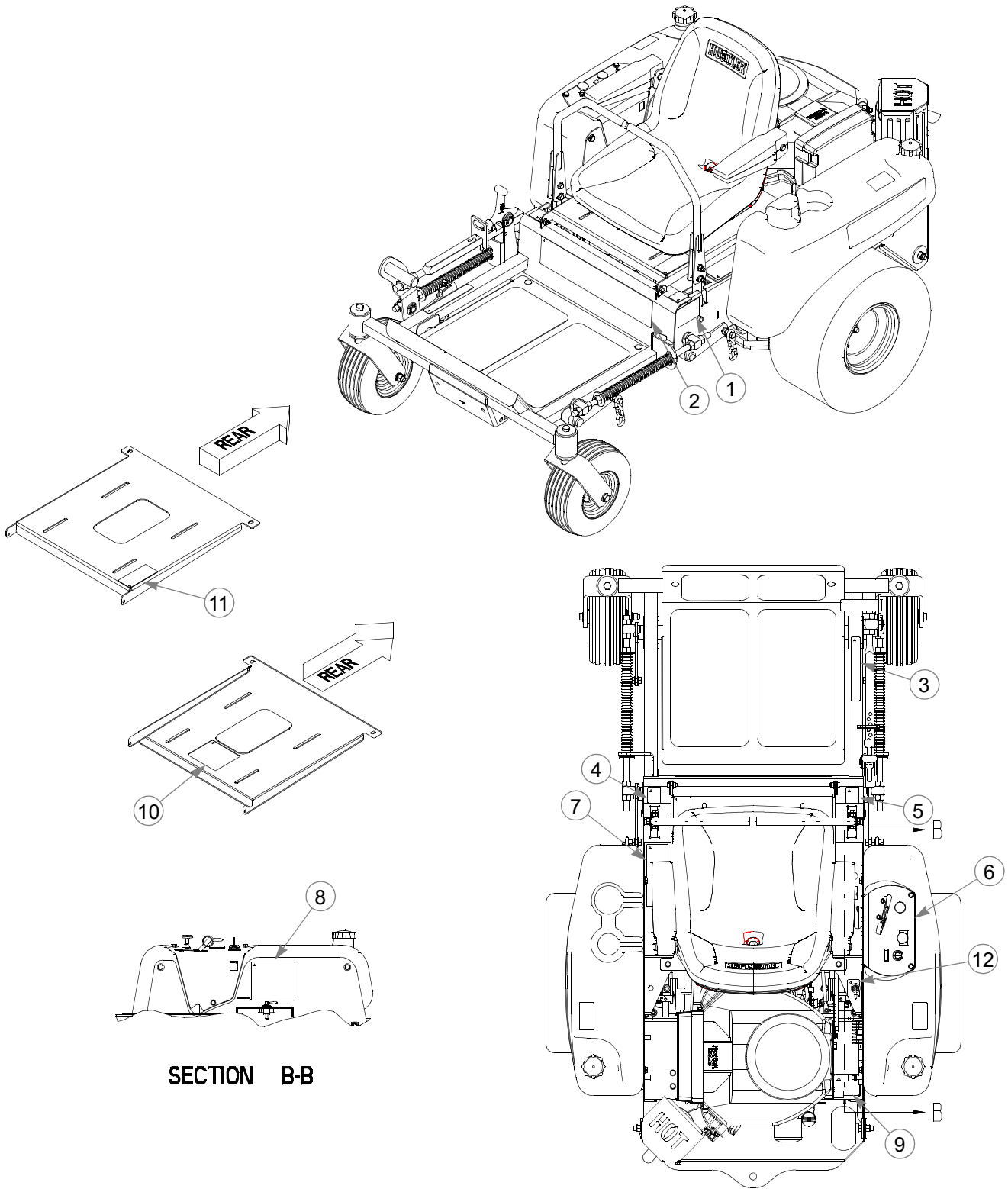
3. Service parts (Milsco Seat):

782177	OPERATOR PRESENCE SWITCH
784850	MILSCO XB-180 ARM REST KIT

Chapter 8 Contents

Tractor Decals	8-2
52" Deck Decals	8-4
44" Deck Decals	8-5

Tractor Decals



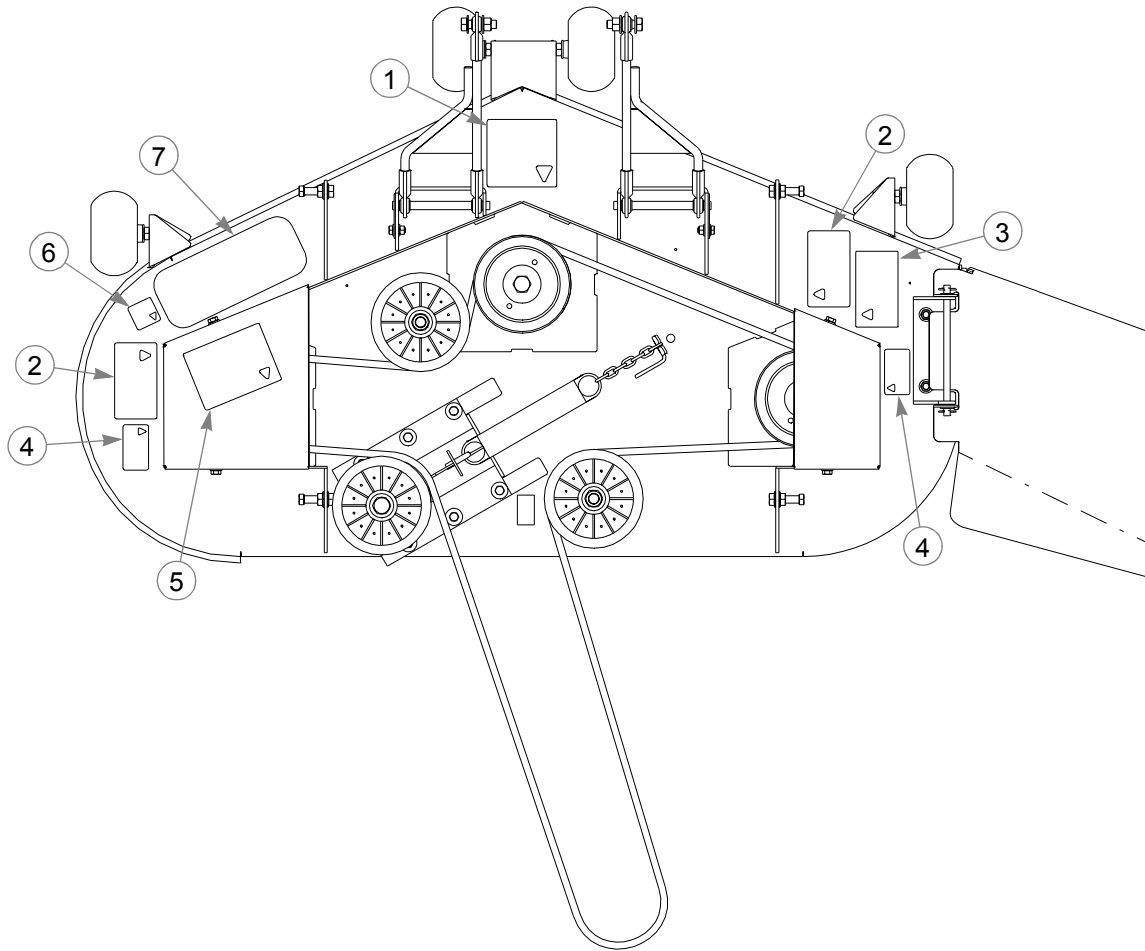
SECTION B-B

Tractor Decals

INDEX NO.	SERVICE PART NO.	MFG. PART NO.	QTY.	DESCRIPTION
1	N/A	083279	1	TURF PROD SERIAL NO PLATE
2	784710	784710	1	FASTRAK DECAL
3	788935	788935	1	DECK HEIGHT DECAL
4	785139	785139	1	FASTRAK LEFT SIDE STEERING DECAL
5	785220	785220	1	FASTRAK RIGHT SIDE STEERING DECAL
6	784702	784702	1	INSTRUMENT PANEL DECAL
7	785121	785121	1	OPERATION DECAL
8	785147	785147	1	SERVICE DECAL
9	771436	771436	1	STABILIZER DECAL
10	727016	727016	1	BATTERY DECAL
11	788968	788968	1	ENGINE COMPARTMENT DECAL
12	791830	791830	1	FUEL INDICATOR DECAL

NOTES:

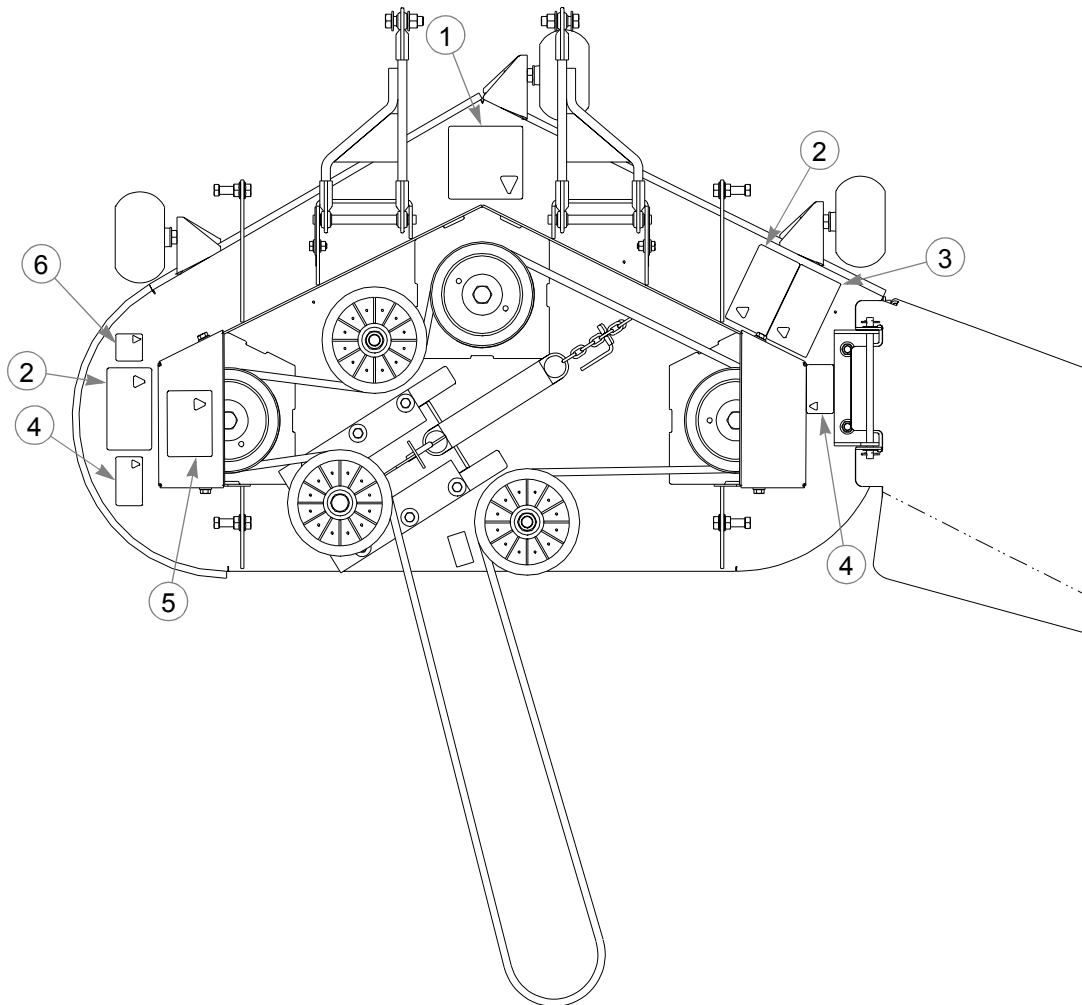
52" Deck Decals



INDEX NO.	SERVICE PART NO.	MFG. PART NO.	QTY.	DESCRIPTION
1	781419	781419	1	BELT ROUTING DECAL
2	727438	727438	2	WHIRLING BLADES DECAL
3	727420	727420L	1	DEFLECTOR SHIELD DECAL
4	727453	727453	2	BELT & PULLEY DECAL
5	785535	785535	1	52 FASTRAK DECK ID DECAL
6	727172	727172	1	"MADE IN U.S.A." DECAL
7	785055	785055	1	STEP TREAD

NOTES:

44" Deck Decals



INDEX NO.	SERVICE PART NO.	MFG. PART NO.	QTY.	DESCRIPTION
1	781419	781419	1	BELT ROUTING DECAL
2	727438	727438	2	WHIRLING BLADES DECAL
3	727420	727420	1	DEFLECTOR SHIELD DECAL
4	727453	727453	2	BELT & PULLEY DECAL
5	784801	784801	1	44 FASTRAK DECK ID DECAL
6	727172	727172	1	"MADE IN U.S.A." DECAL

NOTES:

Numerical Index

Part No.	Page No.	Part No.	Page No.	Part No.	Page No.
Index					
Numerics		059832	3-7, 4-11	365684	1-1
000323	4-9	061077	5-4	367425	1-1
000331	4-3, 4-5, 4-7, 4-9	061101	3-9	367656	1-1
000398	4-3, 5-5	063198	3-7	377242	5-5
004168	5-2	063297	6-3	378273	4-5
005116	6-5	064006	6-5	378703	5-5
005231	4-5	064014	7-4	545962	2-2
008193	7-2	066878	3-10	545970	6-3
011320	2-5	067918	5-2	546044	2-2
015495	3-5	078386	3-7	546051	6-3
015818	4-9	079186	6-5	704643	3-5, 7-2
016287	4-7	080358	7-4	704932	4-11
016972	6-5	083022	4-11	705178	3-7
017004	4-3	083279	8-3	705954	5-2
017038	4-3, 4-5	086660	3-7	712257	4-11
017046	5-2	306969	5-2	712372	4-3, 4-5, 4-7
017129	6-5	339689	5-2	712927	3-9, 4-3, 4-5, 4-7, 6-5
017251	3-7	344267	5-2, 5-5	712976	5-2
017616	7-2	348284	3-5	714998	4-11
019521	5-4	348318	3-5	720177	4-3
023655	3-7	348417	3-3	725267	4-5
024927	3-3, 4-3, 4-5, 4-7	348458	3-5	727016	8-3
025007	3-9, 6-5	355651	2-5	727172	8-4, 8-5
025296	3-9	357103	6-3	727420	8-4, 8-5
026237	4-11	357111	6-3	727438	8-4, 8-5
028118	3-9, 6-5	358317	6-5	727453	8-4, 8-5
029868	3-3	359737	3-7	739144	4-5
029876	4-3, 4-5, 4-7	359745	3-7	740696	3-3
030817	4-7	360131	3-5	745059	4-9
031997	5-5, 6-3	360487	3-7	756270	3-5, 5-5
034272	3-3, 3-5, 3-7, 3-9, 4-3, 4-5, 4-7, 5-5, 6-3, 6-5	360677	3-7	763417	4-3, 4-5, 4-7
034280	3-3, 4-5, 4-7, 5-5, 6-3, 7-4	360792	6-5	767954	2-5, 3-7, 4-9, 6-3, 6-5
036236	3-7	360818	6-5	767962	3-5, 5-5, 6-3, 7-2
042630	5-2	361147	6-5	768044	5-2, 5-3
043067	3-9	361154	6-5	768259	3-7
043570	4-5, 5-5	361212	3-9	768515	4-3, 4-5, 4-7, 4-11
044255	4-7	361295	3-7	768523	3-3, 3-7, 3-9, 4-3, 4-5, 4-7, 5-5, 6-3, 6-5, 7-4
045898	4-11	361550	3-7	768820	4-7
047654	7-4	362251	3-7	768879	4-11
050161	3-9, 4-3, 4-5, 4-7	362988	6-3	770867	3-7
052837	4-3	363176	3-7	771378	4-7
053199	5-5, 6-3	363507	7-4	771428	3-3
054502	2-5, 6-3, 6-5	363788	3-9	771436	8-3
055749	3-5, 7-2	363812	3-7	772806	5-3
055822	4-9, 6-3	363952	2-3	772814	5-3
055939	3-3	364174	3-3	776476	4-11
055947	4-7, 4-11	364315	6-5	779850	3-3
056077	4-3, 4-5	364885	2-4, 5-5	780841	4-7
058776	3-3, 6-3, 7-4	365270	1-1	781153	3-9
		365411	4-11	781211	3-7
		365478	5-5		
		365668	1-1		

Part No.	Page No.	Part No.	Page No.	Part No.	Page No.
781229	3-5	784504	6-5	785725	3-9
781260	3-7	784603	5-2	785733	3-9
781294	3-5	784611	4-3	785808	4-11
781302	3-9, 6-5	784629	4-3	785832	6-5
781419	8-4, 8-5	784686	3-5	786004	4-7
781567	5-5, 6-3	784702	8-3	786012	4-7
781617	7-4	784710	8-3	786178	4-5, 4-11
781708	5-5, 6-3	784736	6-3	786186	4-7, 4-11
781831	3-5	784801	8-5	786269	3-10
781872	6-5	784819	3-7	786301	3-9
781880	6-3	784827	3-9	786335	6-5
781922	3-7	784835	4-3, 4-5, 4-7	786616	4-3, 4-5, 4-7
782177	7-4	784843	4-3	786632	3-3, 4-5, 4-7
782474	6-5	784850	1-1, 7-4	786640	4-5
782664	4-3, 4-5	784868	4-3, 4-11, 4-12	786657	4-11
782995	3-5	784918	4-3, 4-5, 4-7	786954	4-7
783134	5-4	784959	4-3	786962	1-1
783142	5-4	785030	4-11	786988	1-1
783159	5-4	785048	4-3, 4-5, 4-7	787002	1-1
783506	6-5	785055	8-4	787069	6-5
783514	6-6	785063	3-3, 4-3	787226	1-1
783522	6-6	785071	3-3, 4-3, 4-7	787234	1-1
783530	6-6	785089	4-9	787267	4-5
783548	6-6	785105	4-9	787788	4-11
783555	6-6	785113	3-9	787879	3-7
783571	6-5	785121	8-3	787887	3-7
783696	3-7	785139	8-3	787994	6-3
783738	6-5	785147	8-3	788059	3-9
783753	6-5	785162	3-7	788067	3-9
783878	6-5	785196	4-11	788166	5-5, 6-3
784181	4-9	785204	4-3, 4-5, 4-7	788935	8-3
784199	6-5	785220	8-3	788968	8-3
784223	5-2	785378	4-3, 4-5, 4-7	791277	4-9
784231	1-1, 3-9	785402	4-5	791830	8-3
784249	1-1, 6-5	785410	4-5, 4-7	792226	7-4
784256	6-5	785428	1-1	793315	7-4
784264	5-4	785436	1-1	793331	7-4
784272	5-4	785477	4-3	793349	7-4
784280	5-4	785485	2-5	793356	7-4
784306	3-9	785493	2-5	808485	2-2, 2-3, 2-4, 6-3
784314	3-9	785535	8-4	926501	1-1
784322	1-1, 6-5	785543	4-3, 4-5	926519	1-1
784355	3-7	785600	1-1	926527	1-1
784371	3-7	785618	1-1	926592	1-1
784405	3-7	785626	1-1	926600	1-1
784421	3-7	785634	1-1	926774	1-1
784439	3-7	785642	1-1		
784488	3-5	785717	3-9		