

Hustler FasTrak Super Duty Parts Manual



HUSTLER®

•••••

Excel Industries, Inc.

••••

P.O. Box 7000

•••

Hesston, Kansas

•

67062-2097

Table of Contents

General Information	1-1
Section 2	
Frame	2-2
Footrest	2-4
Engine Guard	2-6
Section 3	
Hydraulic System	3-2
Steering	3-4
Steering Sub-Assembly	3-6
Brake	3-8
Section 4	
Wheel and Tire	4-2
Drive Wheel Breakdown	4-4
Front Wheel Breakdown—786061	4-5
Section 5	
Engine, Honda	5-2
Fuel System, Honda	5-4
Fuel Tanks, Honda	5-6
Section 6	
Battery	6-2
Instrument Panel—Honda	6-4
Section 7	
48" Side Discharge Service Deck	7-2
48" Side Discharge Deck, Pulleys & Spindles	7-4
48" Side Discharge Deck	7-6
48" Side Discharge Deck Belt Routing & Tensioning	7-8
48" Rear Discharge Service Deck	7-10
48" Rear Discharge Deck Pulleys & Spindles	7-12
48" Rear Discharge Deck	7-14
48" Rear Discharge Deck Belt Routing & Tensioning	7-16
Spindle Assembly—783506	7-17
Deck Lift	7-18
Deck Mounting Hardware	7-20
Section 8	
Seat	8-2
ROPS	8-4
Index	i-1

General Information

This Manual covers Hustler FasTrak Super Duty models **930131CE & 930180CE**.

Frequently Ordered Parts

PART NO.	DESCRIPTION
600976	ZT2800 OIL FILTER
600979	PUMP DRIVE BELT
791335	B 143" EL BELT (48" SIDE/REAR DISCHARGE DECK)
796623	BLADE, 16.50"-MUL-F-CW (48" SIDE DISCHARGE DECK)
601123	BLADE, 16.50"-L-F-CW (48" REAR DISCHARGE DECK)
068478	FUEL FILTER
602882	PANEL AIR FILTER, HONDA
602883	FOAM OUTER AIR FILTER, HONDA
785634	ENGINE OIL FILTER, HONDA

Service Literature

PART NO.	DESCRIPTION
602901CE	OPERATOR'S MANUAL
602716	ENGINE MANUAL, HONDA

Options Available From Your Dealer

PART NO.	DESCRIPTION
600213	FLEX FORK KIT
108283	LIGHT KIT
333724	STEERING ARM EXTENSION KIT
109941	STRIPE ROLLER KIT
929844	CATCHER (REQUIRES AN ADAPTER KIT)
112886	48" ADAPTER KIT

Note: When ordering parts, you must use the part number as shown for each part, not the index number. Always give the model and serial number to your parts and service representative.

Note: Items sold in bulk such as seals and hoses are sold by the foot.

Using this manual

This manual is part of a service package for the Hustler mowers. Use of this manual in conjunction with other Hustler mower and component manuals will provide the information necessary to service and maintain Hustler mowers.

This Parts Manual provides a complete parts listing for the unit. Use this manual when ordering parts. Illustrations used were current at the time of printing, but subsequent production changes may cause your machine to vary slightly in detail. Excel Industries, Inc. reserves the right to redesign and change the machine as deemed necessary, without notification. If a change has been made to your machine which is not reflected in this parts manual, see your Hustler dealer for current information and parts.

The Operator's Manual provides fundamental operational information and operational safety that is needed when operating the mower.

The component manuals are furnished by the various manufacturers to be used for the troubleshooting and servicing of their products.

Hardware Description Codes & Abbreviations

The following codes are used throughout this parts manual. Refer to this list when ordering parts.

ABBREVIATION	DESCRIPTION	ABBREVIATION	DESCRIPTION
CB	CARRIAGE BOLT	MB	MACHINE BUSHING
CE	CLEVIS PIN	MS	MACHINE SCREW
CN	CLIP NUT	NT	NUT
CP	COTTER PIN	SC	SELF TAPPING CAP SCREW
CS	CAP SCREW	SH	SOCKET HEAD
CW	CUP WASHER	SB	SHOULDER BOLT
FDRW	FENDER WASHER	SS	SET SCREW
FW	FLAT WASHER	OD	OUTSIDE DIAMETER
HX	HEX HEAD	ID	INSIDE DIAMETER
LW	LOCK WASHER		

Standard Torques

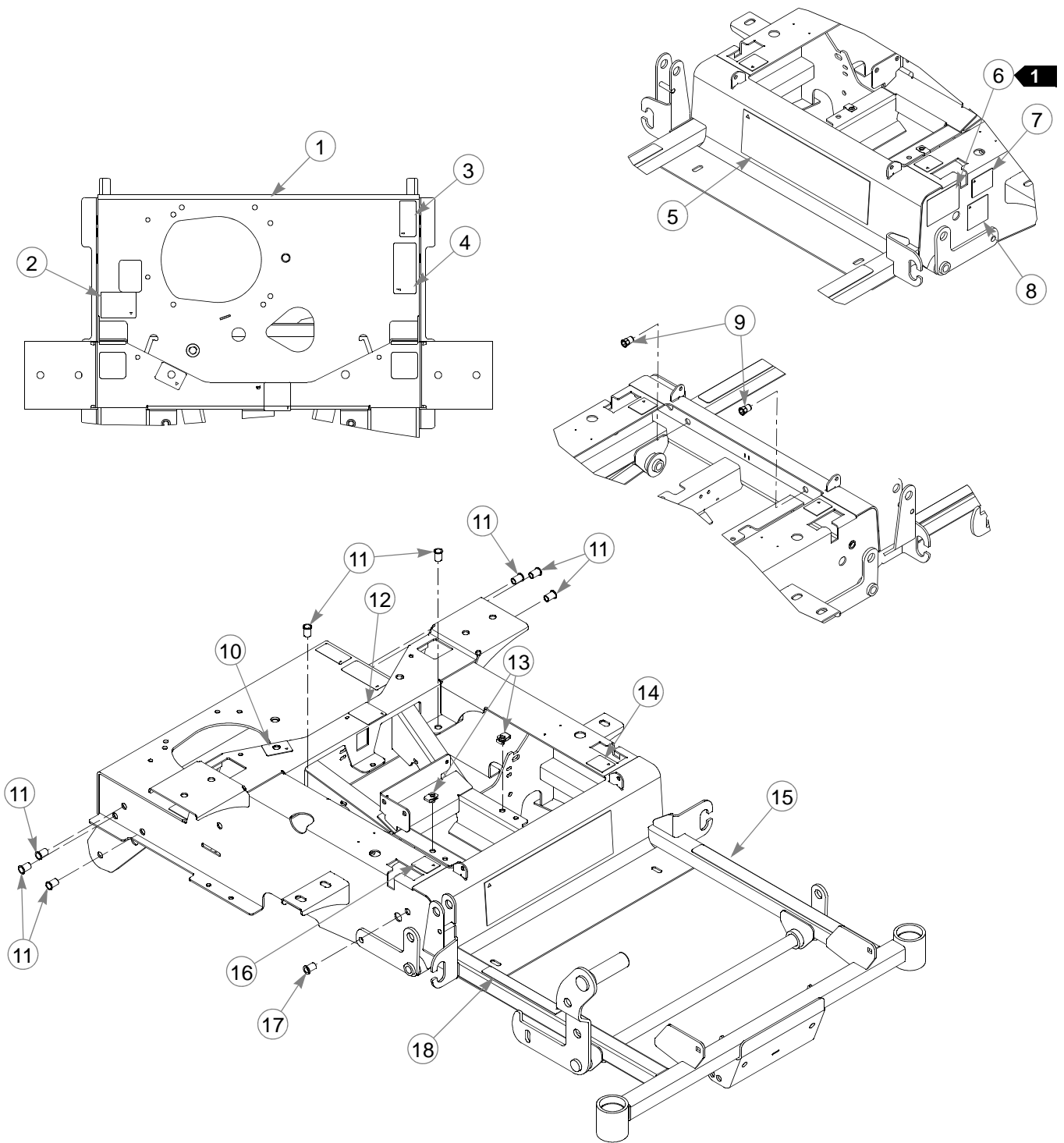
The following chart lists the standard torque values for the threaded fasteners found in this manual. Torque all cap screws, nuts and set screws to these values unless a different torque is shown in the Notes section next to the fastener.

SIZE	FT-LBS	NM	SIZE	FT-LBS	NM
.250	8.2	11.1	M3	1	1.3
.312	17	23	M4	2.2	3
.375	30	40	M5	4.5	6.1
.438	48	65	M6	7.7	10.4
.500	73	99	M8	18.5	25
.562	105	143	M10	37	50
.625	145	200	M12	64	87
.750	260	350	M14	80	108.5
.875	420	565	M16	160	215
1.00	625	850	M20	320	435
			M24	555	750

Section 2

Frame	2-2
Footrest	2-4
Engine Guard.....	2-6

Frame



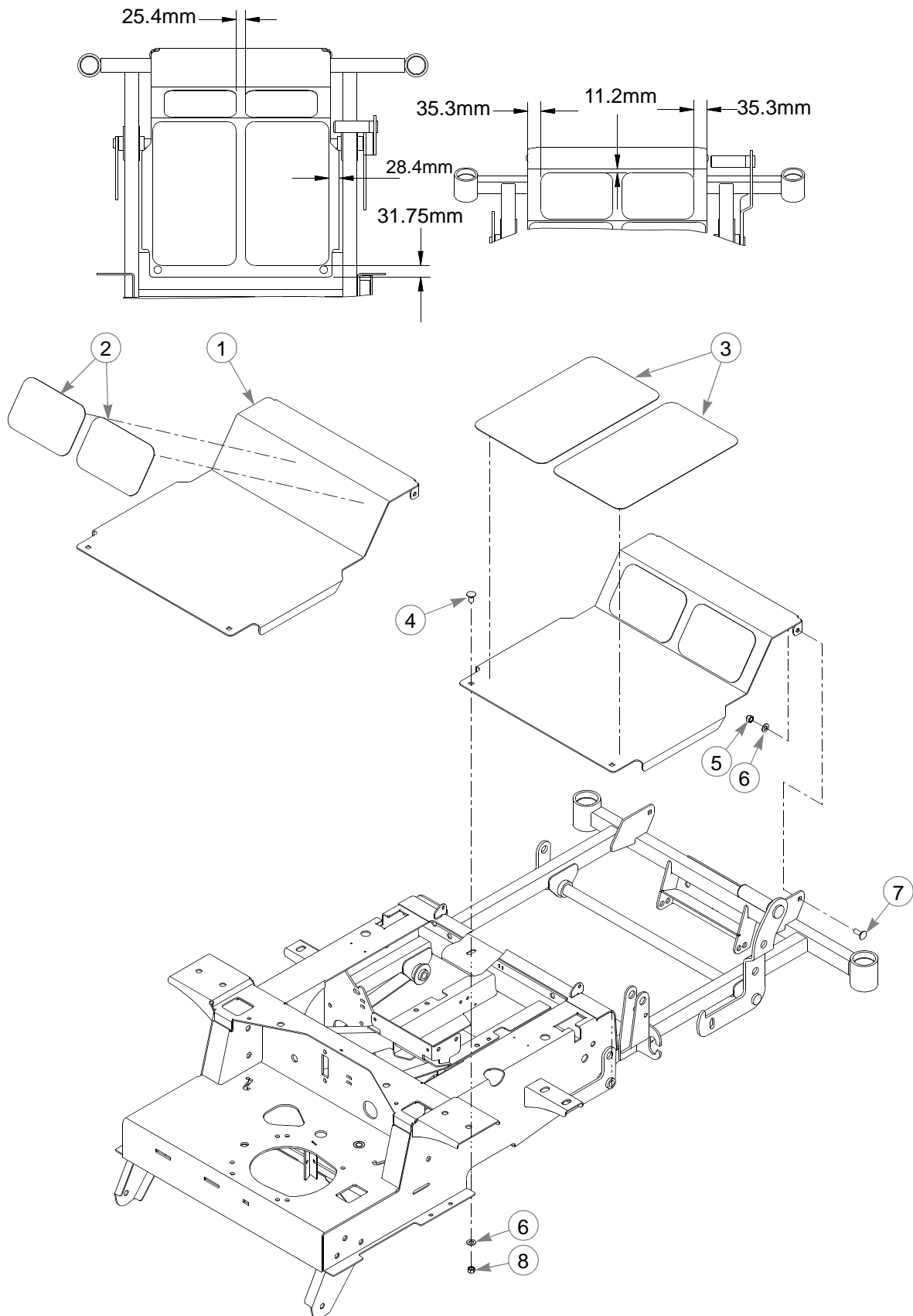
Frame

INDEX NO.	PART NO.	QTY.	DESCRIPTION
1	550776	1	FRAME (WITH DECALS & HARDWARE)
2	601099	1	TOW VALVE DECAL
3	602041	1	HOT DECAL
4	601967	1	ENGINE COMPARTMENT DECAL
5	601421	1	FASTRAK DECAL
1	N/A	1	TURF PRODUCTS SERIAL NO. PLATE
7	776310	1	CE MARK DECAL
8	789776CE	1	CE 105 DBA LIMIT DECAL
9	600994	2	RIVET NUT, 3/8-16 THREAD
10	791848	1	FUEL INDICATOR DECAL
11	808493	8	3/8-16 THREAD NUTSERT
12	602562	1	NO SERVICE DECAL
13	601069	2	CN .312-18 X .200 MAX THK
14	785139	1	LS STEERING DECAL
15	601993	1	SAFE OPERATION DECAL
16	785220	1	RS STEERING DECAL
17	808485	1	RIVET NUT, 5/16-18 THREAD
18	785154CE	1	DECK HEIGHT DECAL

NOTES:

1. In the event the serial number tag becomes damaged or illegible, please contact your Hustler dealer to order a replacement.

Footrest

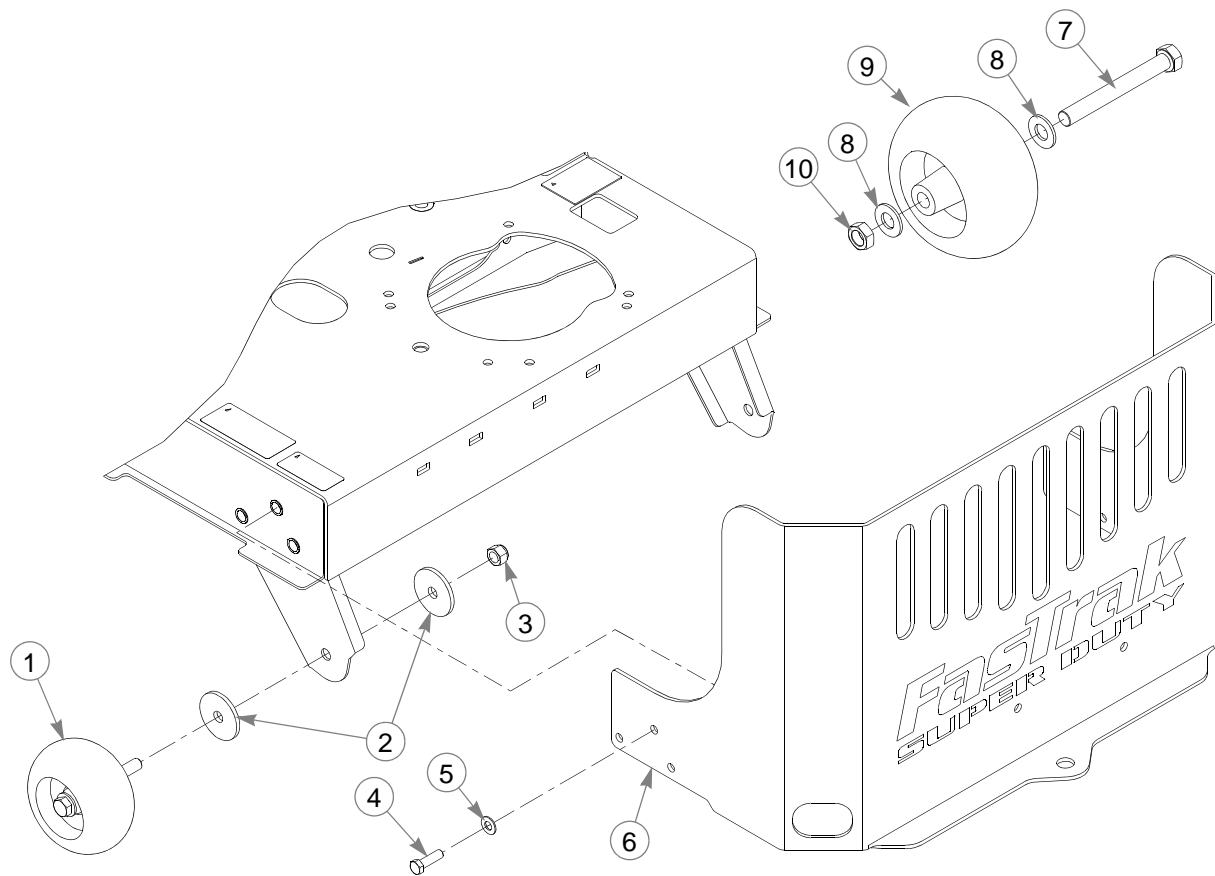


Footrest

INDEX NO.	PART NO.	QTY	DESCRIPTION
1	548768	1	FLOOR PAN (WITH STEP TREADS)
2	785485	2	STEP TREAD, UPPER
3	785493	2	STEP TREAD, LOWER
4	011320	2	CB .375-16 X .750 STD ZN
5	086660	2	NT .375-16 HXZY NL
6	767954	4	FW .406 X .812 X .060 SAE
7	025395	2	CB .375-16 X 1.000 STD CD
8	054502	2	NT .375-16 HX G5 ZN

NOTES:

Engine Guard



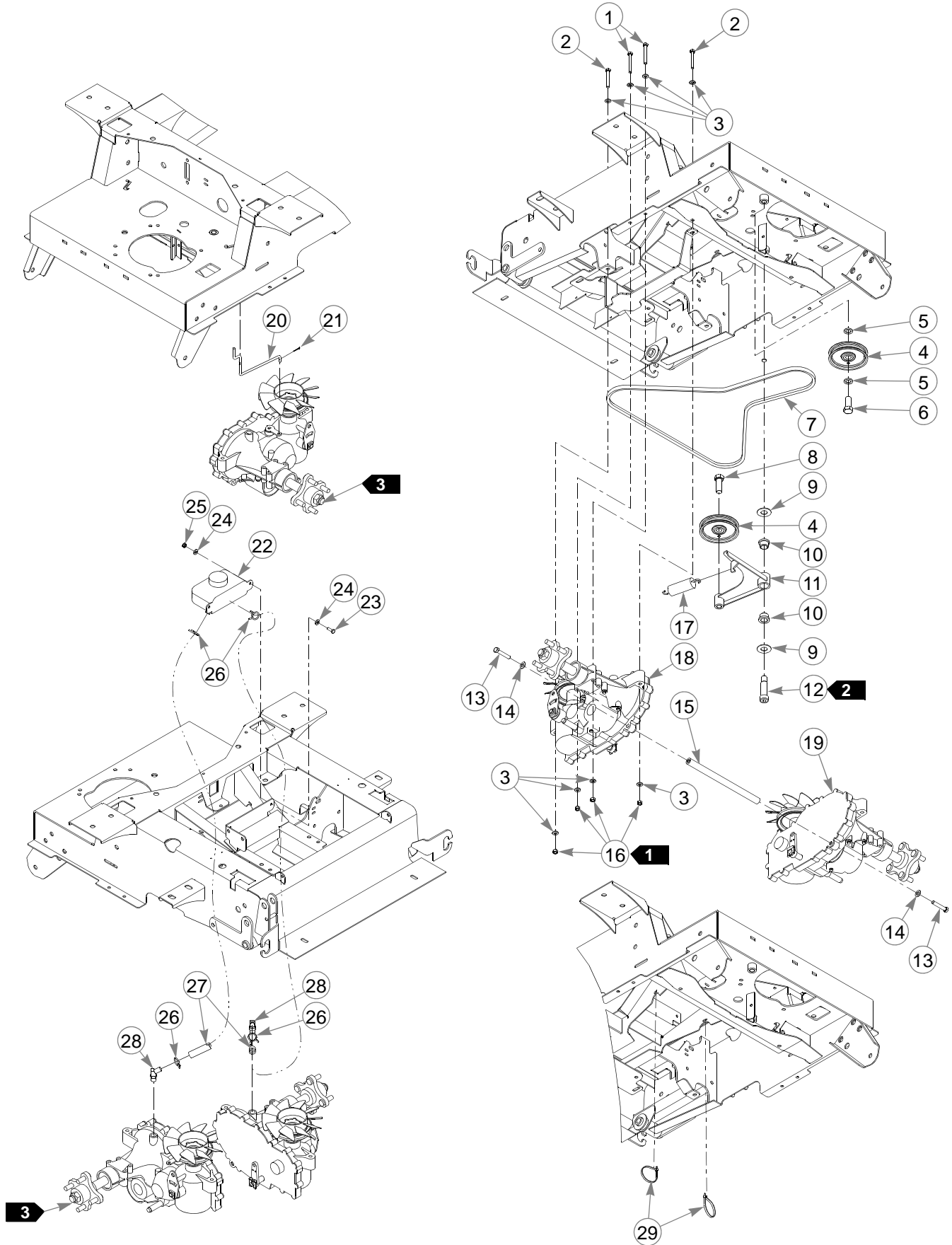
INDEX NO.	PART NO.	QTY.	DESCRIPTION
1	788166	2	WHEEL ASSY, ANTI SCALP
2	344267	4	FW .510X 2.15X.187 SPL
3	781567	2	NT .500-13 HX G8 ZY NL
4	052860	6	CS .375-16X1.250 HX G5
5	767954	6	FW .406X .812 X.060 SAE
6	108847	1	ENGINE GUARD
7	781708	2	CS .500-13X4.250 HX G5
8	767962	4	FW .531X 1.063X.090 SAE
9	031997	2	ANTI-SCALP WHEEL
10	053199	2	NT .500-13 HX JAM ZNYC

NOTES:

Section 3

Hydraulic System	3-2
Steering	3-4
Steering Sub-Assembly	3-6
Brake	3-8

Hydraulic System



Hydraulic System

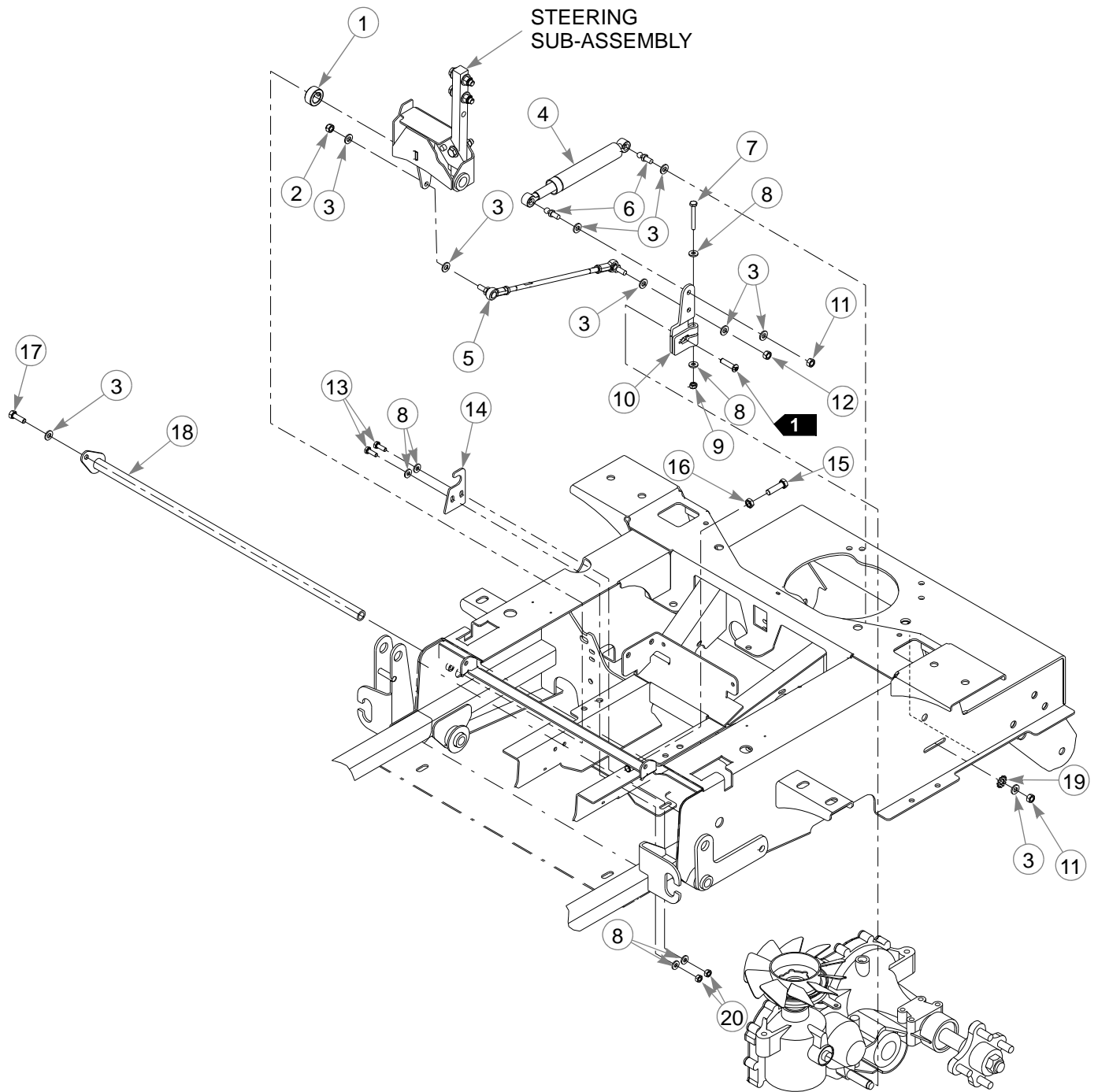
INDEX NO.	PART NO.	QTY	DESCRIPTION
1	710087	4	CS .312-18 X 2.500 HX G5
2	038828	4	CS .312-18 X 2.250 HX G5
3	768523	16	FW .343 X .687 X .051/.080 HD ZN/YL
4	786848	2	IDLER PULLEY 4.0 OD
5	028118	2	FW .625 X 1.00 X .134 ZNYC
6	794446	1	CS .625-11 X 1.500 HX G5
7	600979	1	BELT, FASTRAK PUMP DRIVE
8	025007	1	CS .625-11 X 1.750 HX G5
9	025296	2	FW .760 X 1.625 X .08 ZNYC
10	781153	2	UHMW BUSHING
11	107881	1	PUMP IDLER W/A, FASTRAK
12	601084	1	SB .750 X 2.000 SH .625-11
13	016410	2	CS .375-16X2.00 G5 ZN
14	767954	2	FW .406 X .812 X .060 SAE
15	600987	1	ZT SPACER TUBE
16	034272	8	NT .312-18 HX G5 ZN
17	036384	1	SPRING 1/4 COIL PL 1.23
18	601404	1	ZT3100 LH
19	601403	1	ZT3100 RH
20	601088	2	TOW LINK ROD
21	048553	2	CP .062DX1.000 LG HML Z
22	600759	1	OVERFLOW TANK
23	055939	2	CS .250-20X.750 HX G5 ZN
24	768515	4	FW .281X.625X.051/.080 HD ZN/YL
25	068551	2	NT .250-20 HXZY NL
26	601001	4	SPRING CLAMP 3/4" DIA
27	601018	2	OVERFLOW HOSE
28	600880	2	HYDRAULIC FITTING 45 DEG
29	000331	2	WIRE TIE, SMALL/SHORT

NOTES:

1. Torque to 23 N-m.
2. Torque to 136 N-m.
3. Torque axle hub nuts to 373 N-m.
4. Service parts available for the transaxles:

PART NUMBER	DESCRIPTION	PART NUMBER	DESCRIPTION
600767	OVERFLOW TANK CAP	601941	FAN/PULLEY KIT
600972	BRAKE ARM RETAINER CLIP	601221	ZT2800 BRAKE ARM - 2007
600974	RIGHT FILTER GUARD	601433	4-BOLT HUB KIT SDFST
600975	LEFT FILTER GUARD	600976	OIL FILTER ZT 2800

Steering



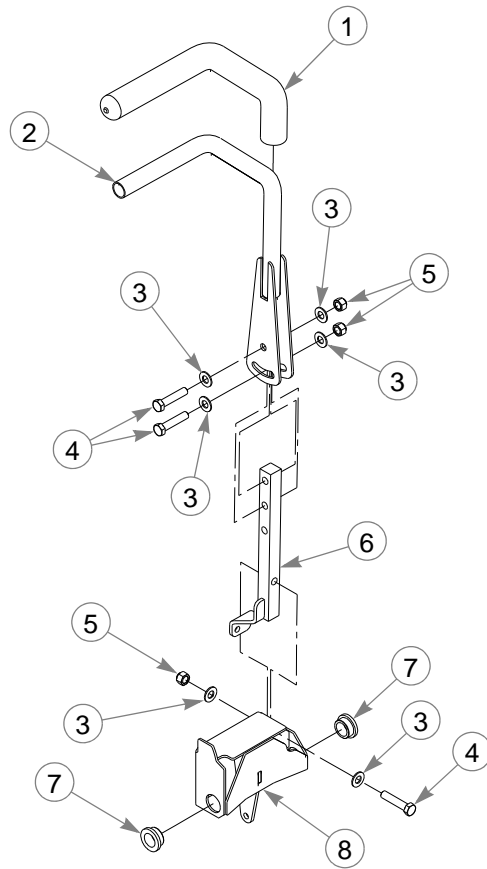
Steering

INDEX NO.	PART NO.	QTY	DESCRIPTION
1	784439	2	LOCK COLLAR .750
2	023655	2	NT .312-24 HX NL ZN
3	768523	17	FW .343 X .687 X .051/.080 HD ZN/YL
4	600221	2	DAMPER, STEERING
5	600981	2	PUMP ROD ASSEMBLY
6	781922	4	BALL STUD, DAMPER
7	704163	2	CS .250-20 X 2.000 HX G5 ZN
8	768515	12	FW .281 X .625 X .051/.080 HD ZN/YL
9	068551	2	NT .250-20 HX ZN NL
10	109318	2	PUMP ARM
11	034272	4	NT .312-18 HX G5 ZNYC
12	041152	2	NT .312-24 HX ZNYC
13	055939	4	CS .250-20 X .750 HX G5 ZN
14	108968	2	STEER TUBE SUPPORT
15	005116	2	CS .375-16 X 1.375 HX G5 ZN
16	706168	2	NT .375-16 HX JAM GR5 ZN
17	036236	1	CS .312-18 X 1.000 HX G5 ZN
18	361295	1	PIVOT TUBE
19	029876	2	LW .312 INT-EXT TOOTH ZN
20	024927	4	NT .250-20 HX GR5 ZN

NOTES:

1. Supplied with transmission.

Steering Sub-Assembly

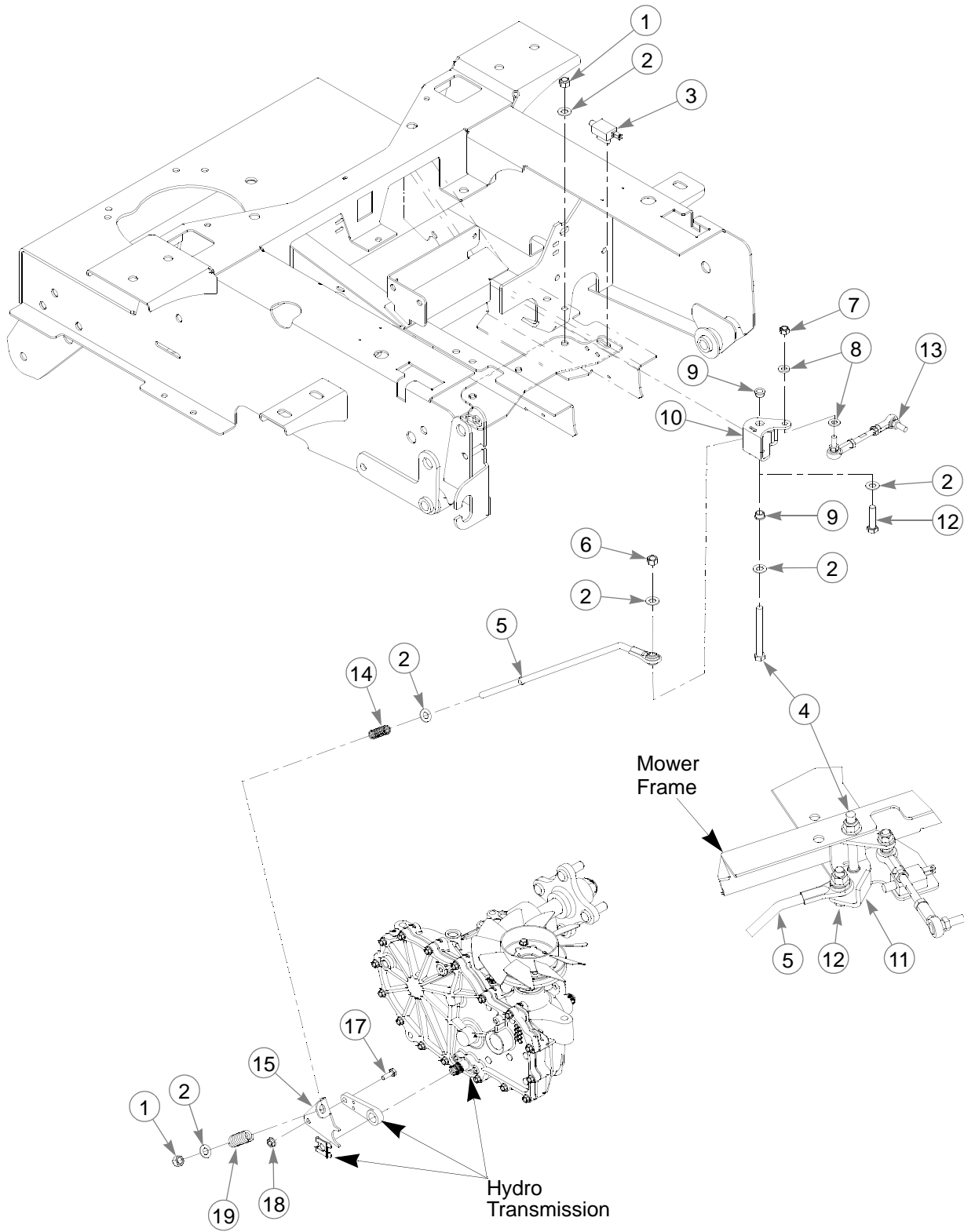


INDEX NO.	PART NO.	QTY.	DESCRIPTION
1	781260	1	STEERING BAR GRIP
2	360487	1	STEERING BAR (WITH GRIP)
3	767954	12	FW .406 X .812 X .060 SAE HD ZN
4	705178	3	CS .375-16 X 1.750 HX G5
5	086660	6	NT .375-16 HXZY NL
6	107843	1	STEERING ARM LEFT (SHOWN)
	107842	1	STEERING ARM RIGHT
7	770867	2	BUSHING, PLASTIC .750X1
8	107848	1	STEER PIVOT, LEFT (SHOWN)
	107847	1	STEER PIVOT RIGHT

NOTES:

This page intentionally left blank.

Brake



Brake

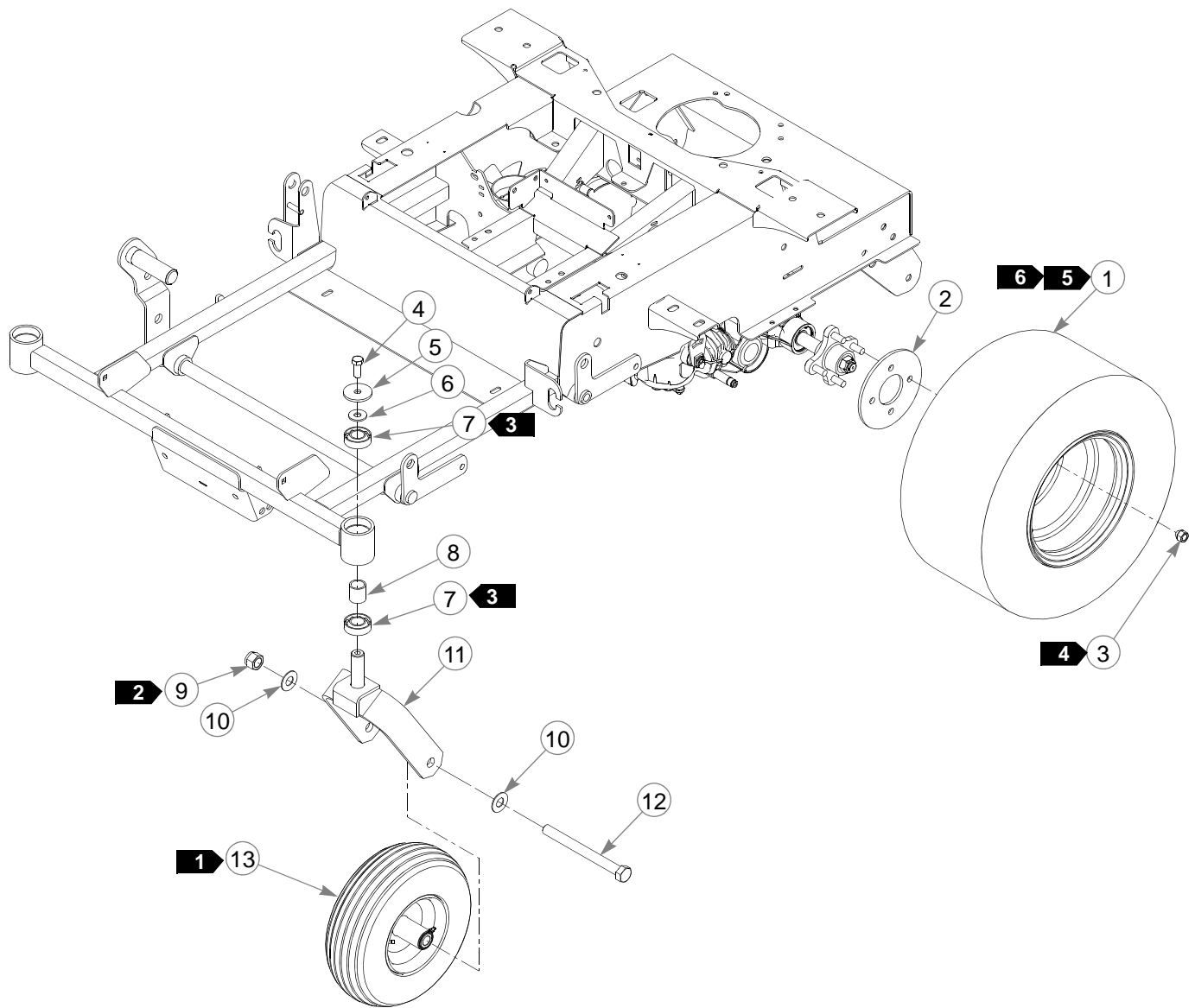
INDEX NO.	PART NO.	QTY.	DESCRIPTION
1	086660	4	NT .375-16 HX LK NY
2	767954	12	FW .406 X .812 X .060 SAE HD ZN
3	601087	2	PLUNGER SWITCH
4	005108	2	CS .375-16X3.50 HX G5 Z
5	601410	2	BRAKE ROD ASSEMBLY
6	054502	2	NT .375-16 HX GRD 5 ZN
7	023655	4	NT .312-24 HXZY NL
8	768523	8	FW .34 3X .687 X .051/.080 HD ZN/YL
9	765339	4	BUSHING
10	107893	1	BRAKE BELL CRANK LS
11	107892	1	BRAKE BELL CRANK RS
12	080655	2	CS .375-16X1.500 HX G5
13	600991	2	SHORT BRAKE LINK ROD
14	601131	2	BRAKE ARM RET. SPRING
15	109203	1	BRAKE SPRING LINK LS
16	109202	1	BRAKE SPRING LINK RS (NOT SHOWN)
17	055939	2	CS .250-20X .750 HX G5
18	016816	2	NT .250-20 HX FL LK ZNY
19	601051	2	OVERTRAVEL SPRING

NOTES:

Section 4

Wheel and Tire	4-2
Drive Wheel Breakdown	4-4
Front Wheel Breakdown—786061.	4-5

Wheel and Tire



Wheel and Tire

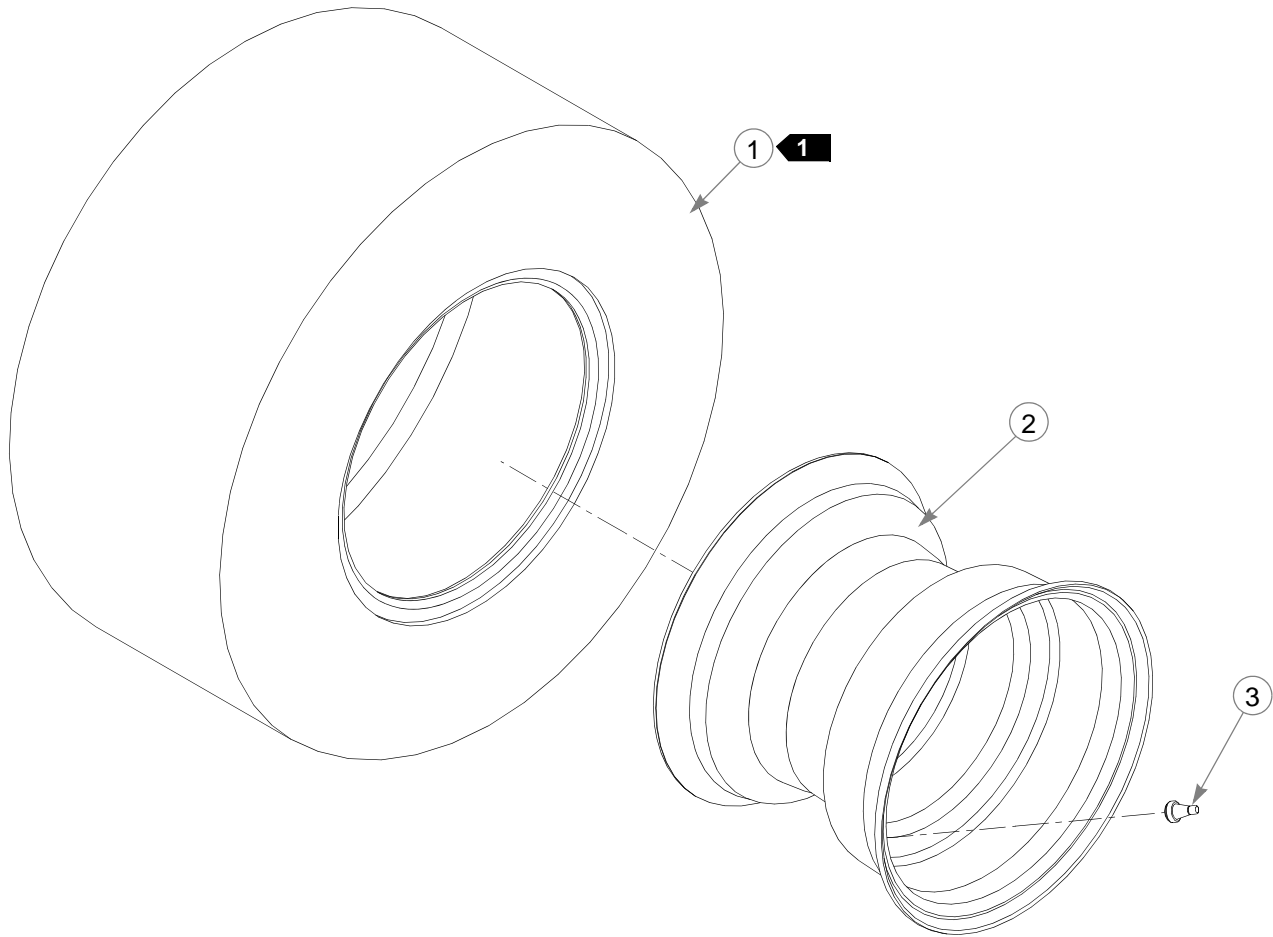
INDEX NO.	PART NO.	QTY.	DESCRIPTION
1	600668	2	TIRE/WHEEL 20 X 10-10
2	111875	2	BACKUP PLATE, WHEEL
3	061077	8	WHEEL NUT
4	705954	2	CS .500-13 X 1.25 HX G5 ZN
5	344267	2	FW .510 X 2.15 X .187 SPL ZN
6	712976	2	FW .531 X 1.375 X .125 ZNYC
7	784223	4	BEARING W/O COLLAR
8	784603	2	SPACER
9	061101	2	NT .750-10 HX NL ZN
10	025296	4	FW .760 X 1.625 X .08 ZN
11	366625	2	FORK
12	786731	2	CS .750-10 X 8.00 HX GR5 ZNYC
13	786061	2	WHEEL & TIRE ASSY

NOTES:

1. Apply grease to zerks (see owners manual).
2. Tighten, then back off until wheel spins freely.
3. Assemble with extended inner race down.
4. Torque to 88.1–101.7 Nm.
5. Inflate tires to 55.16–82.74 kPa.
6. Drive wheel usage:

600668	USED ON 930107CE, 930131CE & 930180CE
--------	--

Drive Wheel Breakdown

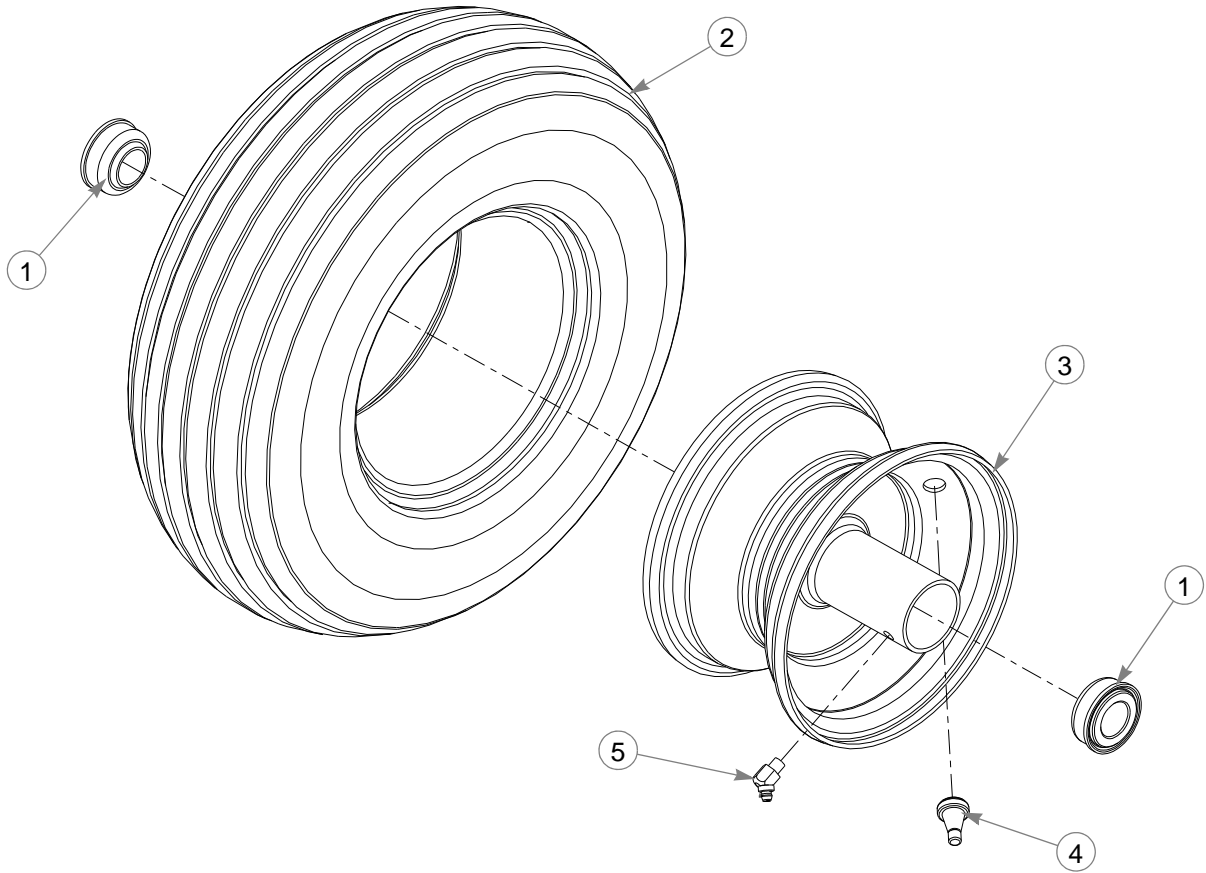


INDEX NO.	PART NO.	QTY.	DESCRIPTION
1	600684	1	TIRE 20 X 10-10
2	600700	1	WHEEL
3	019521	1	TIRE VALVE

NOTES:

1. Inflate tire to 55.16–82.74 kPa.

Front Wheel Breakdown—786061



INDEX NO.	PART NO.	QTY.	DESCRIPTION
1	786103	2	WHEEL BEARING
2	747402	1	TIRE 13 X 5.00
3	786079	1	WHEEL
4	019521	1	TIRE VALVE
5	015511	1	GREASE FITTING 45 DEG 1/4

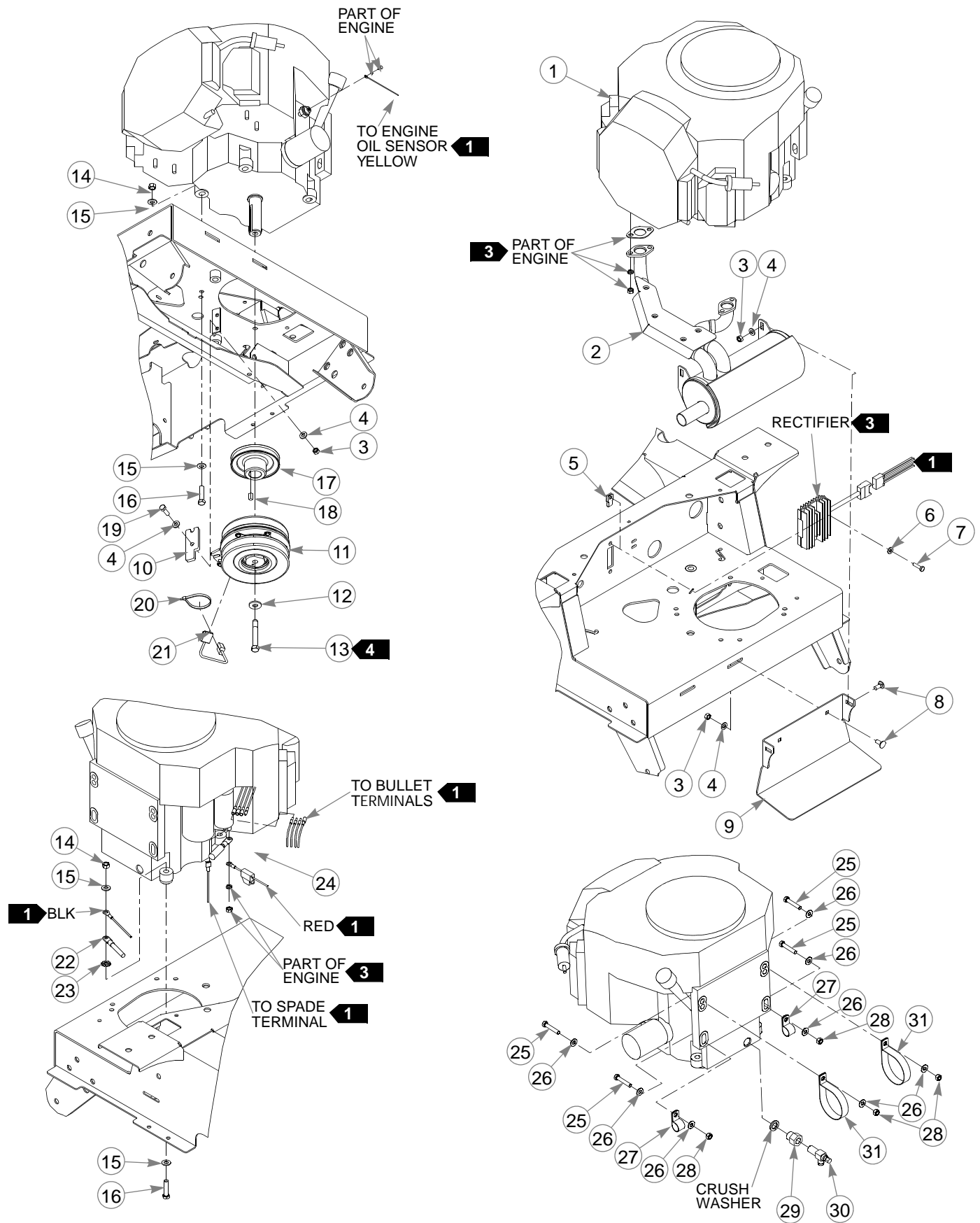
NOTES:

1. Inflate tire to 55.16–82.74 kPa.

Section 5

Engine, Honda	5-2
Fuel System, Honda	5-4
Fuel Tanks, Honda	5-6

Engine, Honda



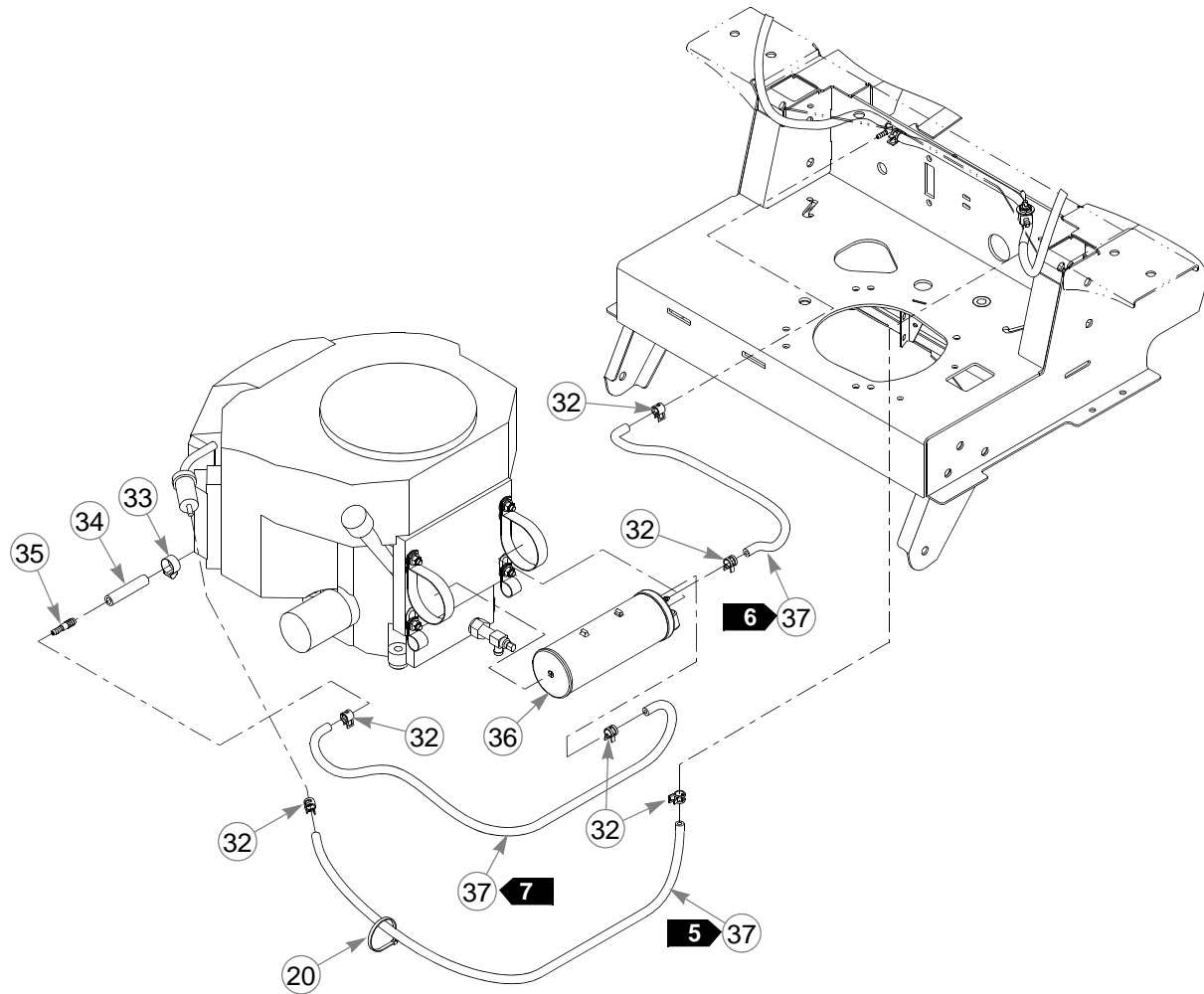
Engine, Honda

INDEX NO.	PART NO.	QTY.	DESCRIPTION
1	N/A	1	ENGINE, HONDA GXV630
2	602699	1	MUFFLER
3	034272	6	NT .312-18 HX G5 ZNYC
4	768523	8	FW .343 X .687 X .051/.080H
5	601118	2	CN .250-20 X .19 MAX THK
6	768515	2	FW .281 X .625 X .051/.080H
7	056077	2	CS .250-20 X 1.000 HX G5
8	016253	4	CB .312-18 X .750 FUL ZN
9	112828	1	EXHAUST MOUNT
10	113946	1	CLUTCH ANCHOR
11	603273	1	CLUTCH
12	602680	1	FW .453 X 1.12 X .119 HRD
13	785048	1	CS .437-20 X 3.00 HXG5 P85
14	054502	4	NT .375-16 HX GRD 5 ZNY
15	767954	8	FW .406 X .812 X .060 SAE
16	705160	4	CS .375-16 X 1.625 HX G5
17	603255	1	PULLEY
18	712372	1	KEY 1/4 SQ X 0.66 LG
19	036236	2	CS .312-18 X 1.000 HX G5
20	000331	2	WIRE TIE, SMALL/SHORT
21	791251	1	CLUTCH HARNESS PIGTAIL
22	796219	1	NEGATIVE BATTERY CABLE
23	029876	1	LW .312 INT-EXT TOOTH
24	744276	1	POSITIVE BATTERY CABLE
25	050161	4	CS .312-18 X 1.750 HX G5
26	070664	8	FW .344 X .750 X .06 ZNYC
27	043570	2	LOOP CLAMP
28	058776	4	NT .312-18 HXZY NL
29	602708	1	M20 X 1.5 MALE ADAPTER
30	796516	1	3/8-18 OIL DRAIN VALVE
31	602980	2	3.0" CUSHIONED CLAMP

NOTES:

1. Part of Wire Harness.
2. Engine oil capacity: Refer to engine owner's manual.
3. Supplied with engine.
4. Torque to 61–65 Nm. If fastener is loosened or removed, do not re-use. Replace with new fastener. Use only hand tools to install this fastener.

Fuel System, Honda

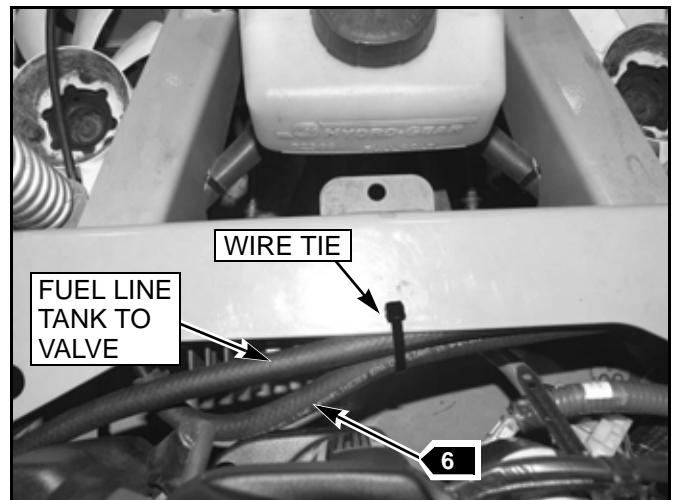
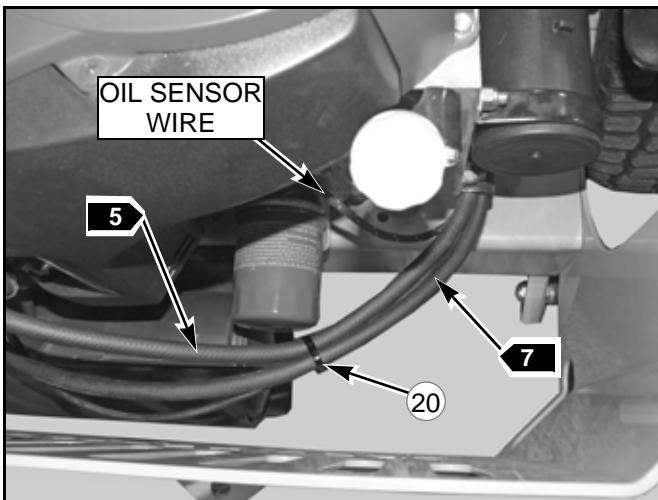
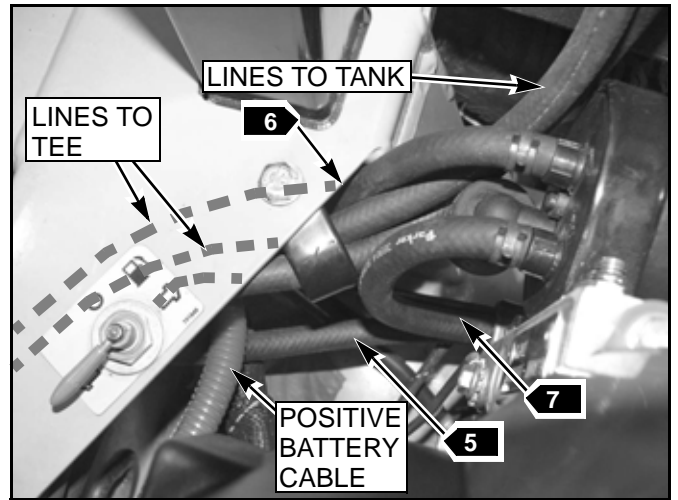
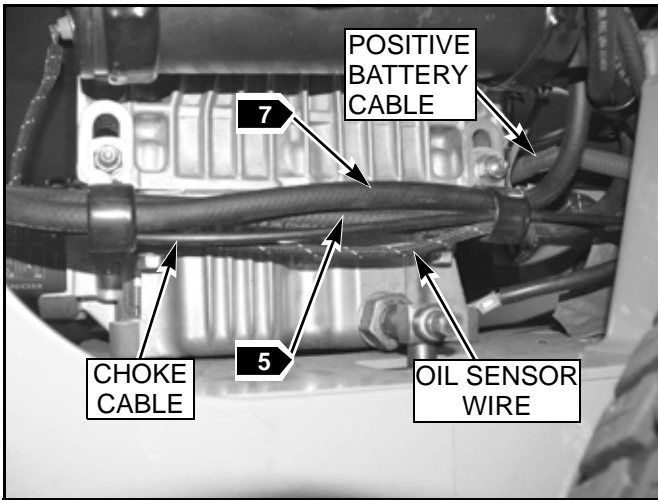


INDEX NO.	PART NO.	QTY.	DESCRIPTION
32	000323	6	HOSE CLAMP
33	000307	1	HOSE CLAMP
34	603293	7.6cm	0.38" LOW PRESSURE HOSE
35	603209	1	FITTING, -6BARB/-4BARB STR
36	602982	1	CARBON CANISTER, 9 GAL.
37	015818	218.4cm	1/4" FUEL LINE

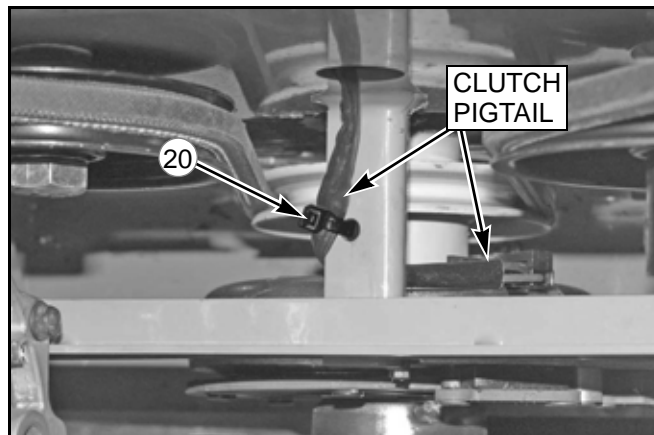
FUEL LINE LENGTHS		
5	78.7cm	VALVE TO ENGINE (FUEL)
6	50.8cm	TEE TO CARBON CANISTER (VAPOR)
7	88.9cm	ENGINE TO CARBON CANISTER (VAPOR)

ROUTING DETAIL

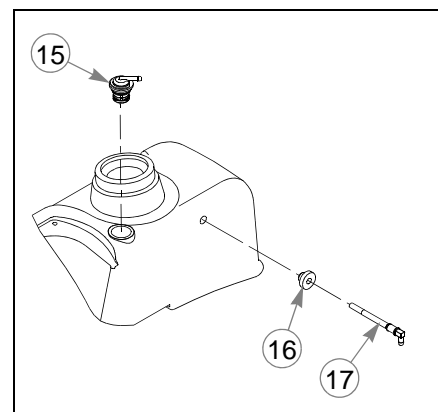
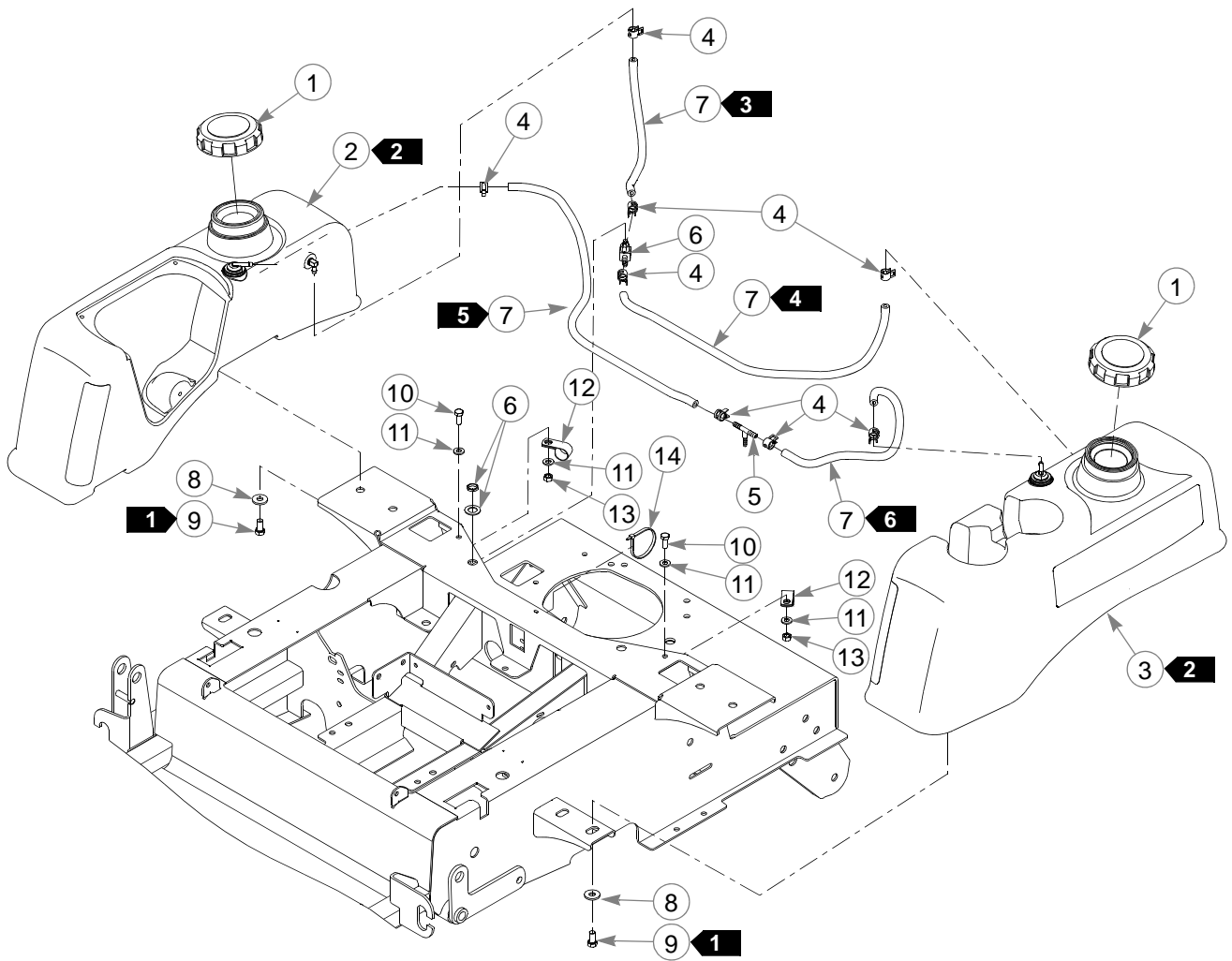
1. Wire harness, fuel and vapor line, and choke cable routing, Fig. 1, Fig. 2, Fig. 3 & Fig. 4.



2. Clutch pigtail to clutch anchor tie strap Fig. 5.



Fuel Tanks, Honda



Fuel Tanks, Honda

INDEX NO.	PART NO.	QTY.	DESCRIPTION
1	602916	2	RATCHETING GAS CAP, 3.5"
2	602977	1	RS FUEL TANK
3	602978	1	LS FUEL TANK
4	000323	8	HOSE CLAMP
5	603306	1	PLASTIC TEE, 1/4"
6	745059	1	FUEL VALVE 3-WAY
7	015818	208.3cm	1/4" FUEL LINE
8	712919	8	FW .406 X 1.00 X.12 HRD Z
9	055822	8	CS .375-16 X .750 HX G5
10	034280	2	CS .312-18 X .750 HX G5
11	768523	4	FW .343 X .687 X .051/.080H
12	043570	2	LOOP CLAMP
13	034272	2	NT .312-18 HX G5 ZNYC
14	000331	1	WIRE TIE, SMALL/SHORT
15	603158	1	ROLLOVER VALVE & GROMMET
16	785295	1	SUCTION HOSE GROMMET
17	601529	1	SUCTION HOSE 26.5

NOTES:

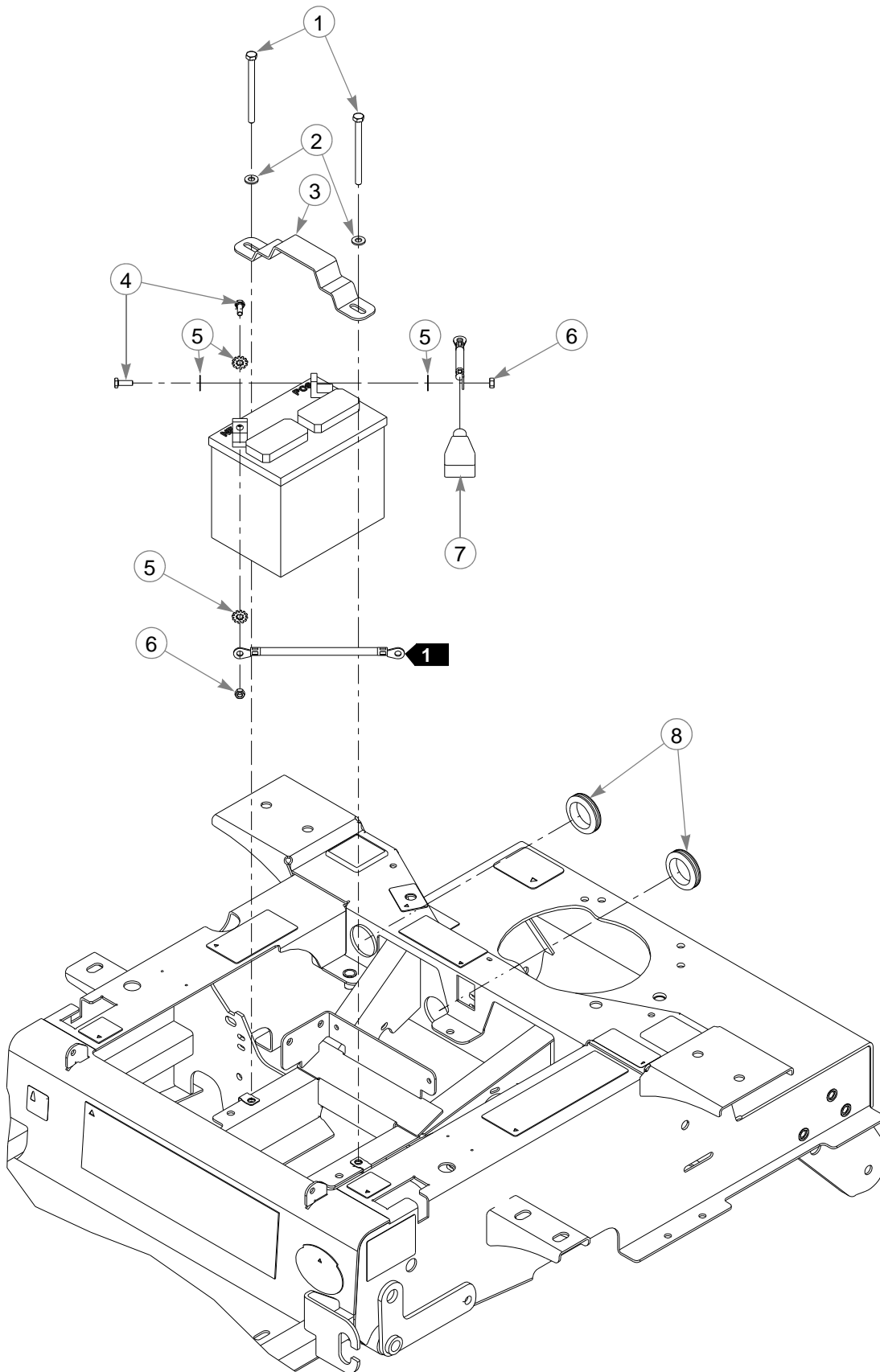
1. Torque to 27 Nm.
2. Includes rollover valve and grommet, suction hose grommet and suction hose.

FUEL LINE LENGTHS		
3	30.5cm	RIGHT TANK TO VALVE (FUEL)
4	58.4cm	LEFT TANK TO VALVE (FUEL)
5	73.7cm	RIGHT TANK TO TEE (VAPOR)
6	45.7cm	LEFT TANK TO TEE (VAPOR)

Section 6

Battery	6-2
Instrument Panel—Honda	6-4

Battery



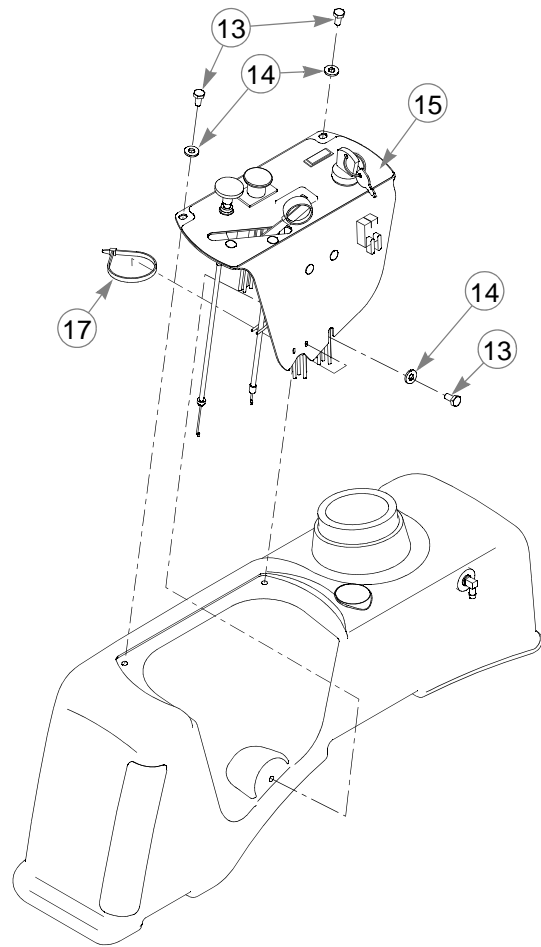
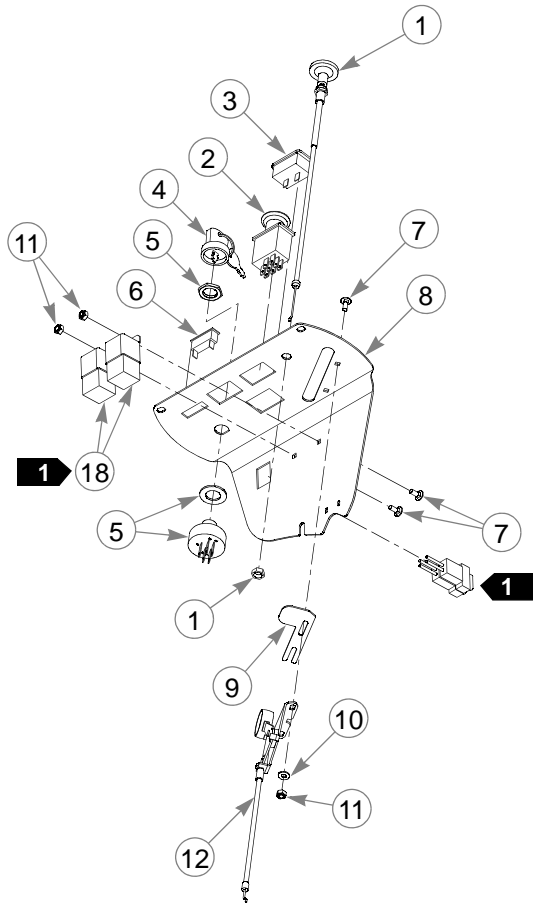
Battery

INDEX NO.	PART NO.	QTY.	DESCRIPTION
1	714618	2	CS .312-18X4.000 HX G5
2	768523	2	FW .343X.687X.051/.080H
3	348417	1	STRAP, BATTERY CLAMP
4	055939	2	CS .250-20X .750 HX G5
5	029868	4	LW .250 INT-EXT TOOTH Z
6	024927	2	NT .250-20 HX GR.5 ZNYC
7	771428	1	BATTERY CBL BOOT-RED
8	794644	2	GM 1.50 X 2.12 X 1.75

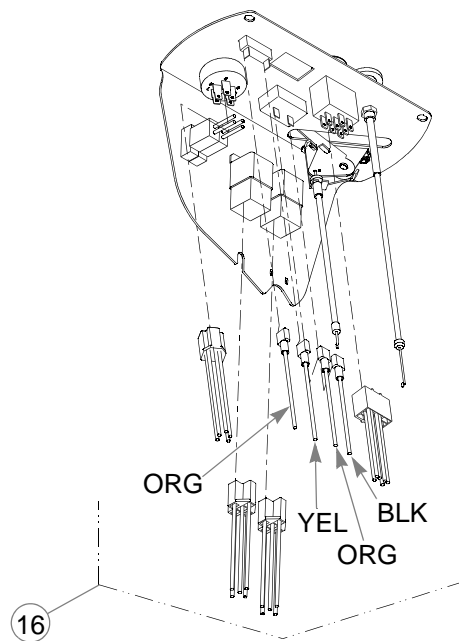
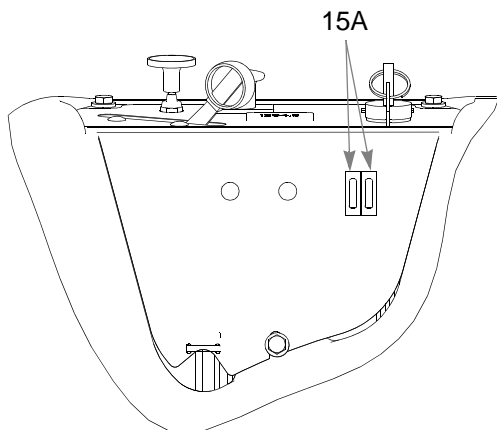
NOTES:

1. When performing service on the mower, disconnect the battery ground cable and do not reconnect to the battery until the engine is ready to be started.

Instrument Panel—Honda



FUSE SIZE AND LOCATION



Instrument Panel—Honda

INDEX NO.	PART NO.	QTY.	DESCRIPTION
1	601095	1	CHOKE CABLE
2	776476	1	PTO SWITCH
3	769166	1	HOUR METER
4	785808	1	KEY ASSEMBLY
5	045898	1	IGNITION SWITCH
6	712257	1	RED INDICATOR LIGHT
7	601098	4	CB 10-24 X .500 ZYNC
8	550454	1	INSTRUMENT PANEL (WITH DECAL)
9	102707	1	CE THROTTLE STOP
10	704932	2	FW .219 X .500 X .048 ZNYC
11	059832	4	NT #10-24 HX NL ZN
12	778365	1	THROTTLE CABLE
13	055947	3	CS .250-20 X .500 HX G5
14	768515	3	FW .281 X .625 X .051/.080H
15	602233	1	INSTRUMENT PANEL DECAL
16	602710	1	WIRE HARNESS
17	000331	7	WIRE TIE, SMALL/SHORT
18	601053	2	SEALED RELAY WITH BRACKET

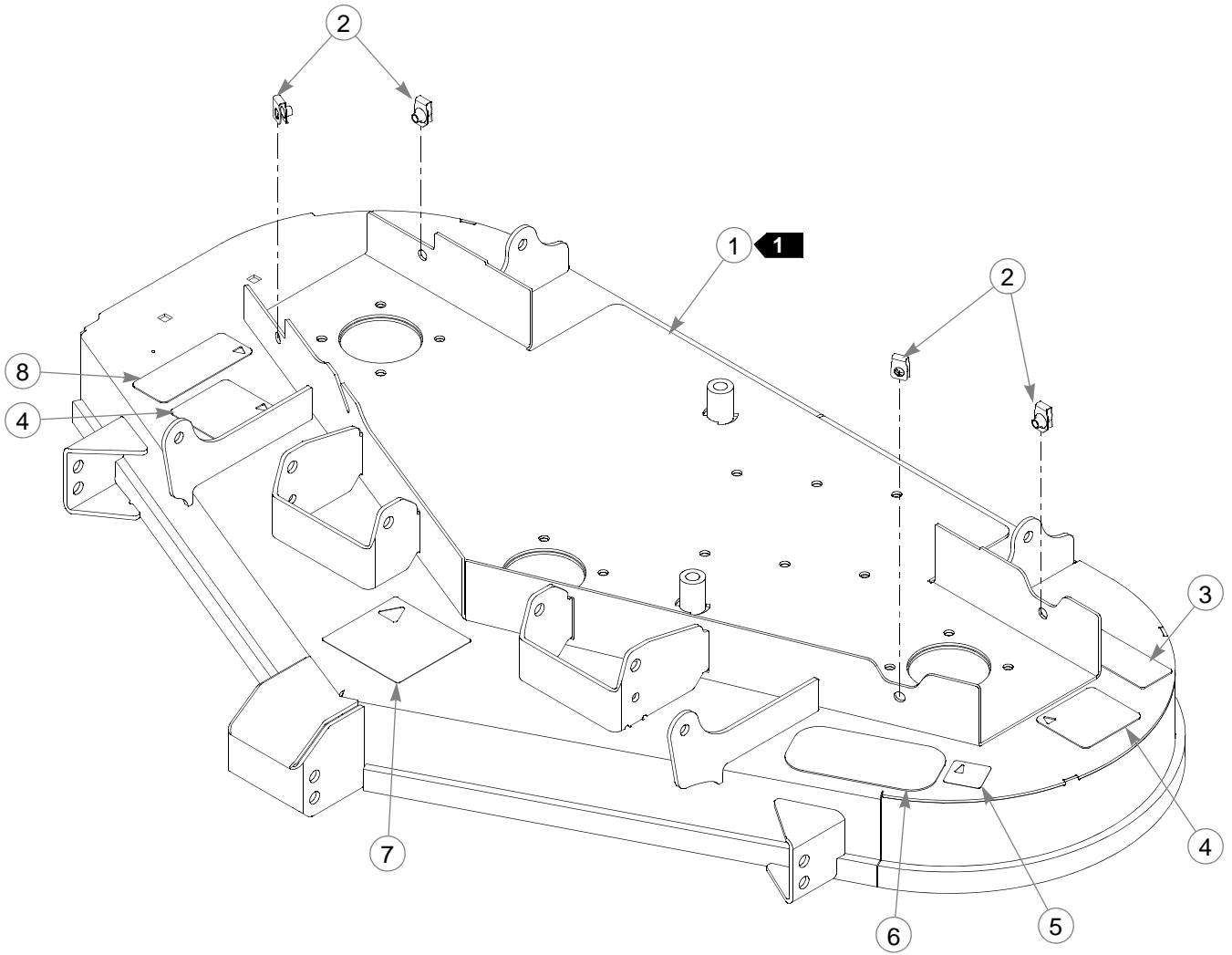
NOTES:

1. Part of wire harness.

Section 7

48" Side Discharge Service Deck	7-2
48" Side Discharge Deck, Pulleys & Spindles	7-4
48" Side Discharge Deck	7-6
48" Side Discharge Deck Belt Routing & Tensioning	7-8
48" Rear Discharge Service Deck	7-10
48" Rear Discharge Deck Pulleys & Spindles	7-12
48" Rear Discharge Deck	7-14
48" Rear Discharge Deck Belt Routing & Tensioning	7-16
Spindle Assembly—783506	7-17
Deck Lift	7-18
Deck Mounting Hardware	7-20

48" Side Discharge Service Deck



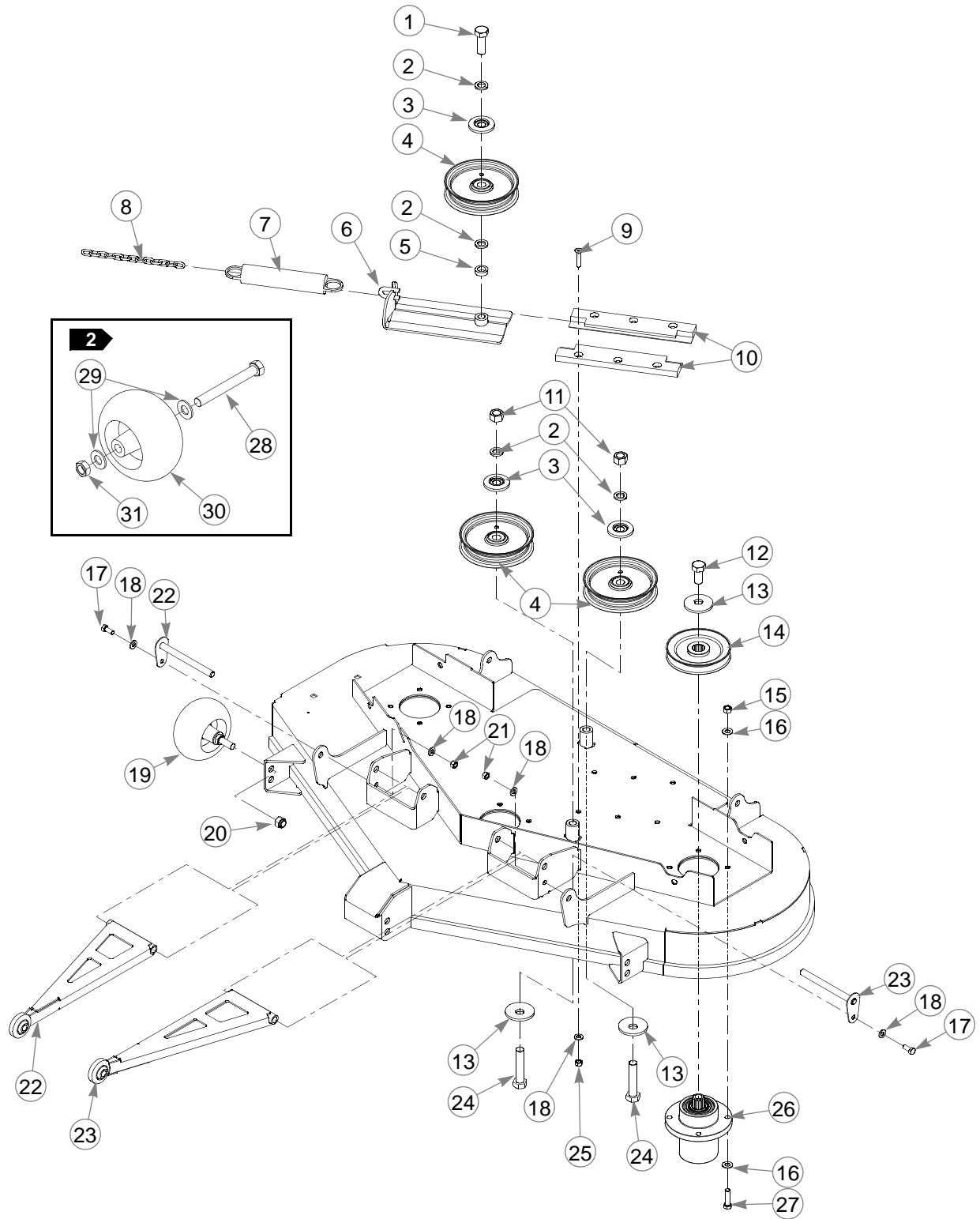
48" Side Discharge Service Deck

INDEX NO.	PART NO.	QTY.	DESCRIPTION
1	550752	1	48" DECK
2	601069	4	CN .312-18 X .200 MAX THK
3	601892	1	THROWN OBJECTS DECAL
4	601837	2	DECK DANGERS DECAL
5	727172	1	MADE IN U.S.A. DECAL
6	794503	1	DECK STEP TREAD
7	781419	1	BELT ROUTING DECAL
8	601624	1	DISCHARGE CHUTE DECAL

NOTES:

1. The service deck includes the hardware and decals as shown.

48" Side Discharge Deck, Pulleys & Spindles



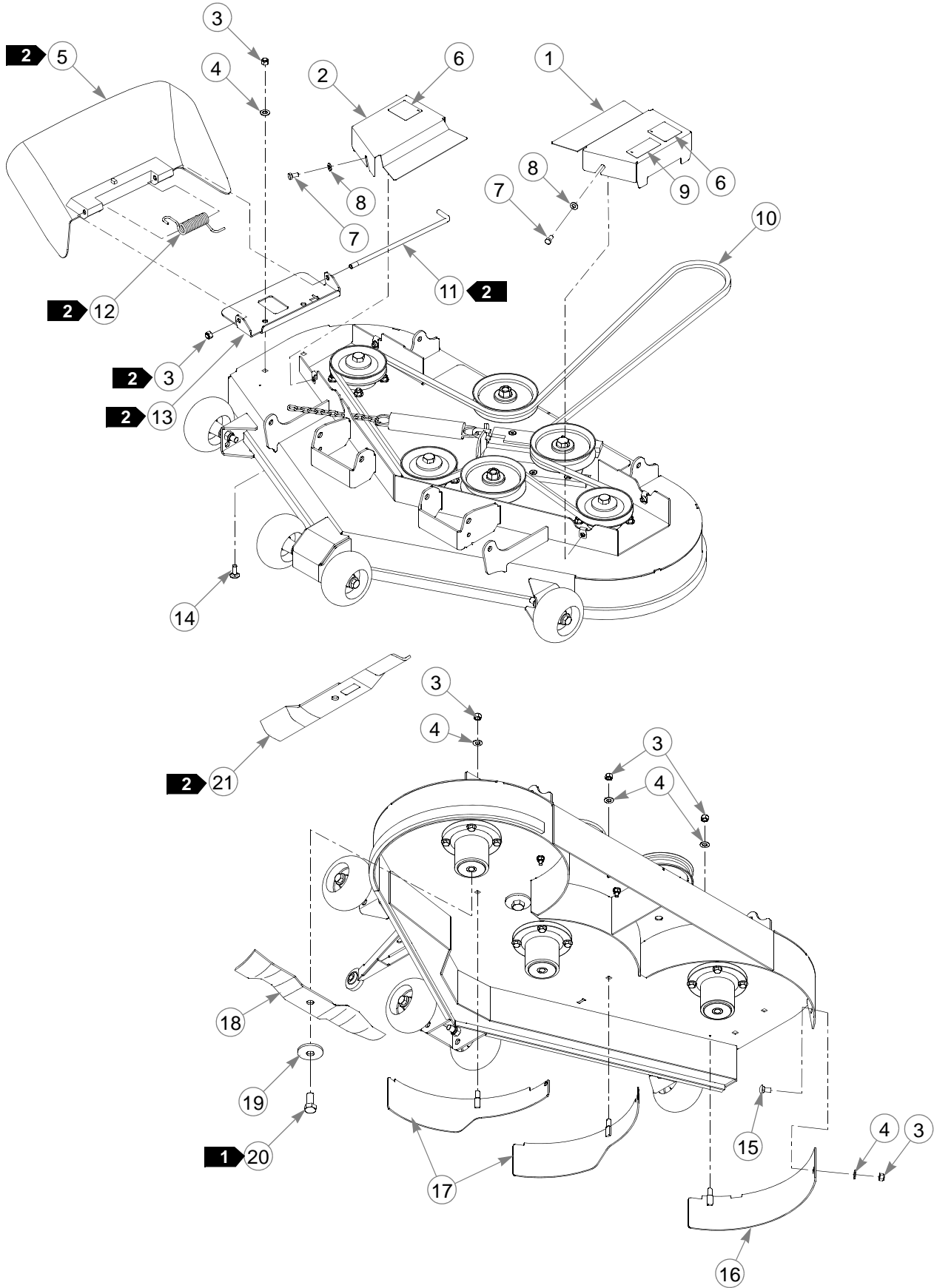
48" Side Discharge Deck, Pulleys & Spindles

INDEX NO.	PART NO.	QTY.	DESCRIPTION
1	025007	1	CS .625-11 X 1.750 HX G5
2	028118	4	FW .625 X 1.00 X .134 ZNYC
3	603057	3	DUST SHIELD WITH OFFSET
4	781856	3	IDLER PULLEY, NHI 5.0"
5	600296	1	DECK IDLER SPACER
6	350884	1	DECK IDLER SLIDE
7	781302	1	TENSION SPRING
8	259812	1	CHAIN
9	797910	6	CS .312-18 X 1.50 FLT SH ZY
10	601434	2	UHMW IDLER SLIDE
11	016972	2	NT .625-11 HX G5 ZNYC
12	781872	3	CS .625-11 X 1.25 HX G5 Z
13	782474	5	CW .631 X 2.250 X .187 PNT
14	792689	3	PULLEY 5" OD 80B102
15	054502	12	NT .375-16 HX GRD 5 ZNY
16	767954	24	FW .406 X .812 X .060 SAE
17	034280	2	CS .312-18 X .750 HX G5
18	768523	10	FW .343 X .687 X .051/.080H
19	788166	4	ANTI-SCALP WHEEL
20	781567	4	NT .500-13 HX G8 ZY NL
21	034272	2	NT .312-18 HX G5 ZNYC
22	109247	1	RS PULLER AND PIN
23	109248	1	LS PULLER AND PIN
24	783738	2	CS .625-11 X 3.00 FULL HX
25	058776	6	NT .312-18 HXZY NL
26	783506	3	BLADE SPINDLE
27	005116	12	CS .375-16 X 1.375 HX G5
28	781708	1	CS .500-13X4.250 HX G5
29	767962	2	FW .531X 1.063X.090 SAE
30	031997	1	ANTI-SCALP WHEEL
31	053199	1	NT .500-13 HX JAM ZNYC

NOTES:

1. Torque to 160 Nm.
2. The anti-scalp wheel service part includes the wheel and hardware.

48" Side Discharge Deck



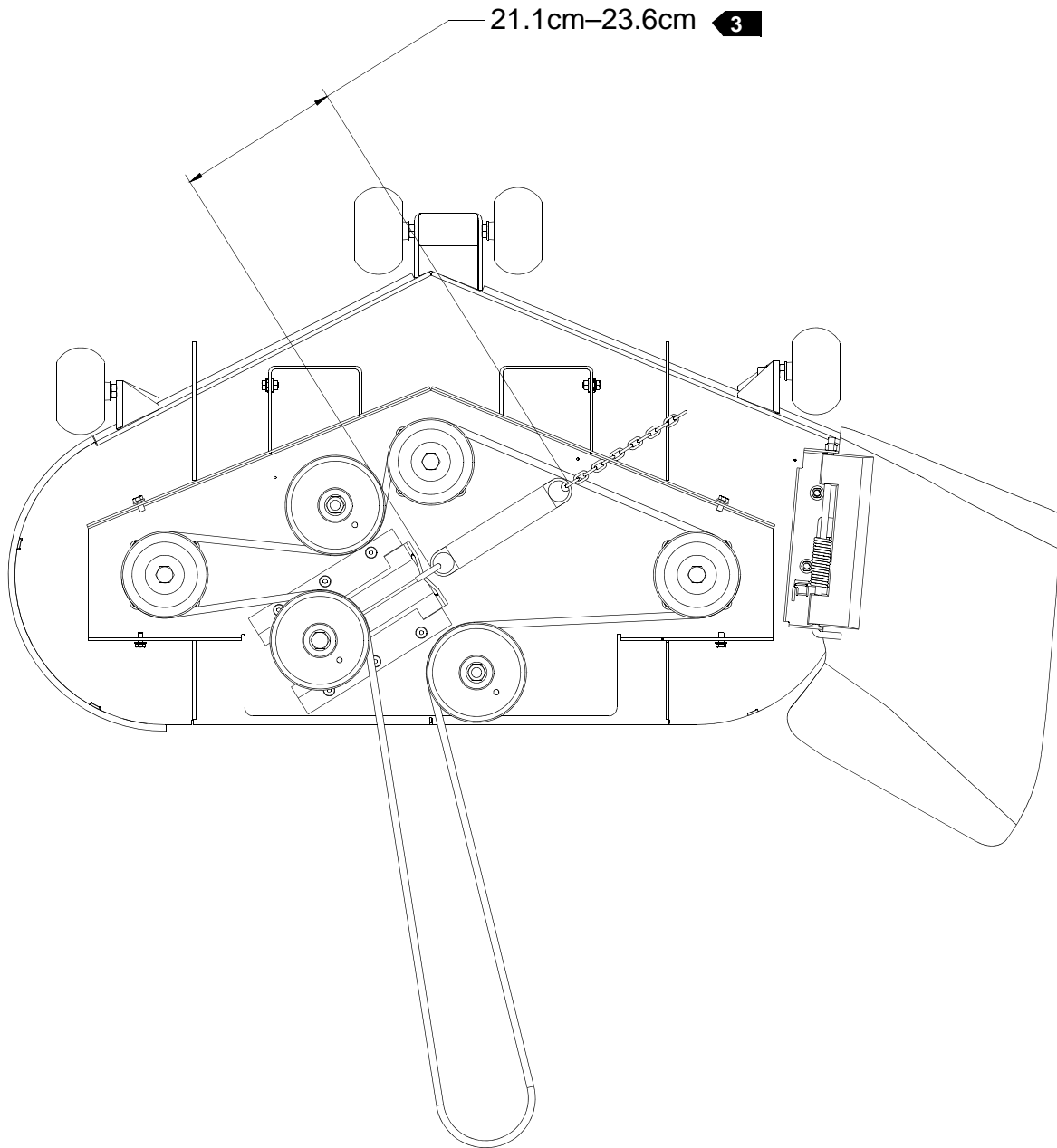
48" Side Discharge Deck

INDEX NO.	PART NO.	QTY.	DESCRIPTION
1	550478	1	LS PULLEY COVER (WITH DECALS)
2	550477	1	RS PULLEY COVER (WITH DECALS)
3	086660	7	NT .375-16 HXZY NL
4	767954	6	FW .406 X .812 X .060 SAE
5	601806	1	DISCHARGE CHUTE
6	602562	2	NO SERVICE DECAL
7	064006	4	CS .312-18 X .625 HX G5
8	768523	4	FW .343 X .687 X .051/.080H
9	793976	1	48" DECK ID DECAL
10	791335	1	BELT, B 143" EL
11	601843	1	CHUTE PIN
12	602591	1	HEAVY TORSION SPRING
13	112448	1	CHUTE BRACKET
14	025395	2	CB .375-16 X 1.00 G5 ZNY
15	011320	1	CB .375-16 X .750 STD ZN
16	108227	1	BAFFLE MULCH
17	108225	2	BAFFLE MULCH COMMON
18	796623	3	BLADE, 16.50"-MUL-F-CW
19	782474	3	CW .631 X 2.250 X .187 PNT
20	781872	3	CS .625-11 X 1.25 HX G5 Z
21	795757	3	BLADE, F16.50"-H-F-CW

NOTES:

1. Torque to 160 N-m.
2. Items must be used when mulch system is removed.

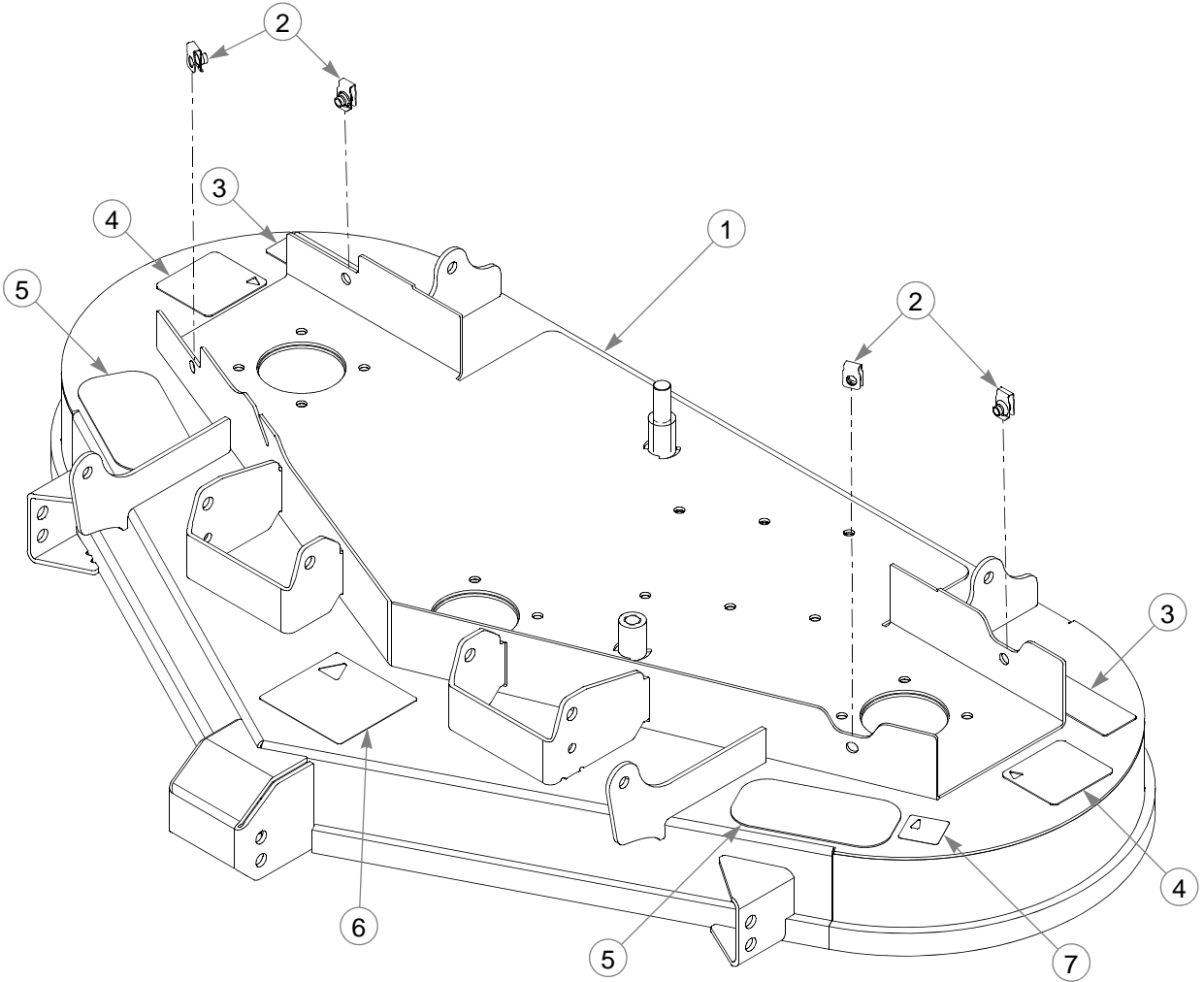
48" Side Discharge Deck Belt Routing & Tensioning



3. Spring length after tensioning new belt. Measured from the outside of one hook to the outside of the opposite hook with the deck set at cutting height.
4. Route belt as shown.

This page intentionally left blank.

48" Rear Discharge Service Deck

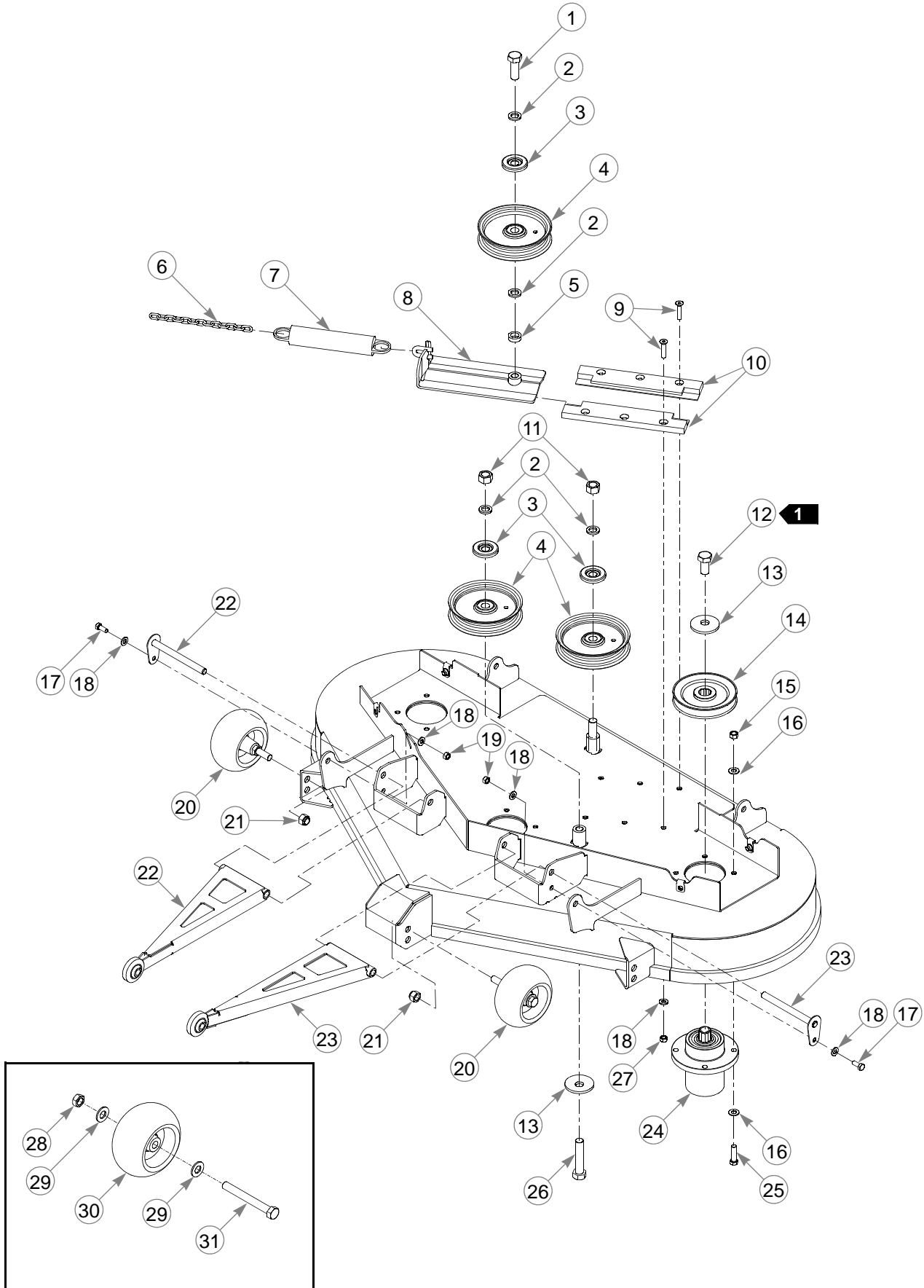


48" Rear Discharge Service Deck

INDEX NO.	PART NO.	QTY.	DESCRIPTION
1	550814	1	48" RD DECK (WITH DECALS AND HARDWARE)
2	601069	4	CN .312-18 X .200 MAX THK
3	601892	2	THROWN OBJECTS DECAL
4	601837	2	DECK DANGERS DECAL
5	794503	2	DECK STEP TREAD
6	781419	1	BELT ROUTING DECAL
7	727172	1	MADE IN USA DECAL

NOTES:

48" Rear Discharge Deck Pulleys & Spindles



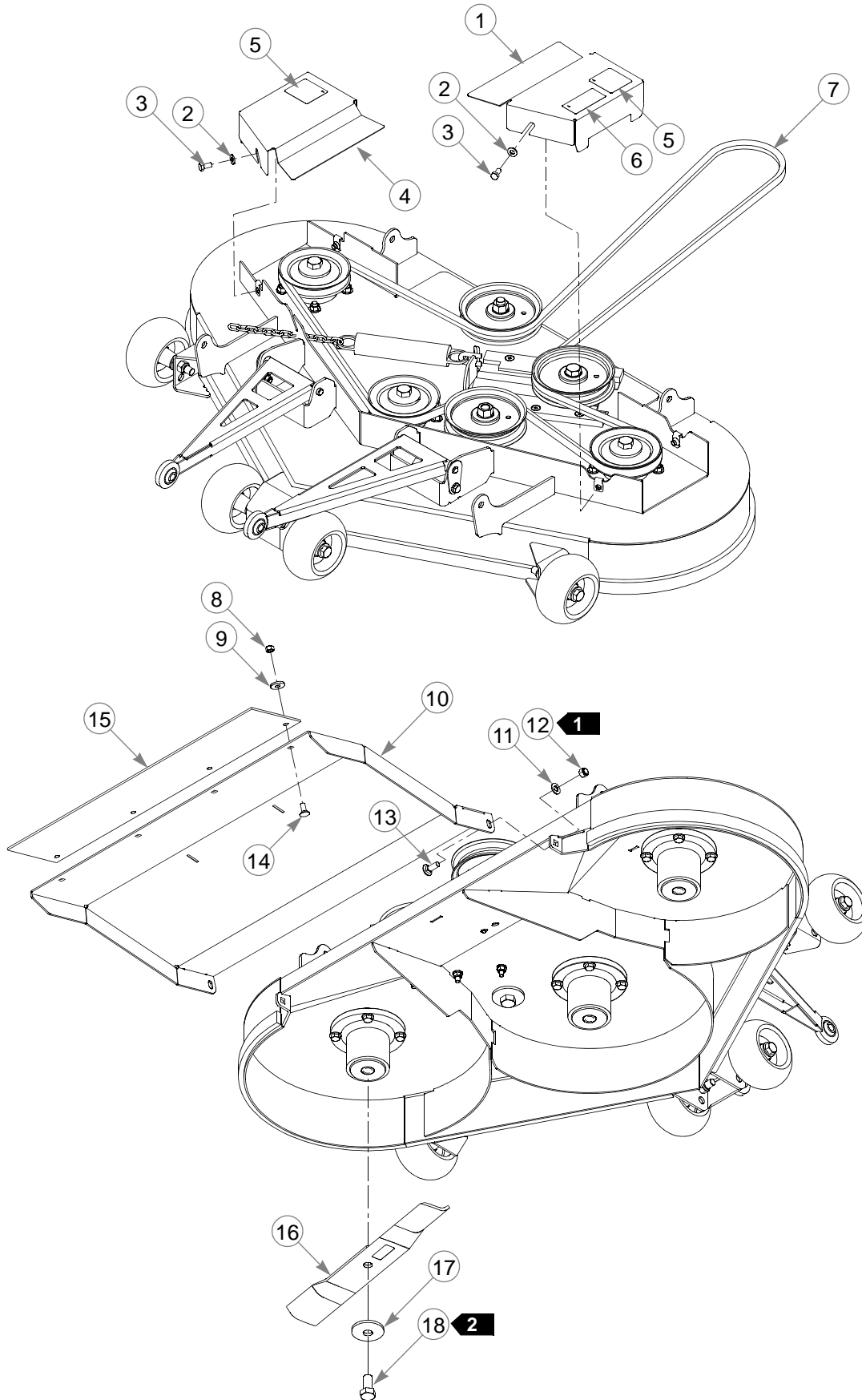
48" Rear Discharge Deck Pulleys & Spindles

INDEX NO.	PART NO.	QTY.	DESCRIPTION
1	025007	1	CS .625-11 X 1.750 HX G5
2	028118	4	FW .625 X 1.00 X .134 ZNYC
3	603057	3	DUST SHIELD WITH OFFSET
4	781856	3	IDLER PULLEY, NHI 5.0"
5	600296	1	DECK IDLER SPACER
6	259812	1	CHAIN
7	781302	1	TENSION SPRING
8	350884	1	DECK IDLER SLIDE
9	797910	6	CS .312-18 X 1.50 FLT SH ZY
10	601434	2	UHMW IDLER SLIDE
11	016972	2	NT .625-11 HX G5 ZNYC
12	781872	3	CS .625-11 X 1.25 HX G5 Z
13	782474	4	CW .631 X 2.250 X .187 PNT
14	792689	3	DRIVE PULLEY 5.19 OP
15	054502	12	NT .375-16 HX GRD 5 ZNY
16	767954	24	FW .406 X .812 X .060 SAE
17	034280	2	CS .312-18 X .750 HX G5
18	768523	7	FW .343 X .687 X .051/.080H
19	034272	2	NT .312-18 HX G5 ZNYC
20	788166	4	ANTI-SCALP WHEEL (WITH HARDWARE)
21	781567	4	NT .500-13 HX G8 ZY NL
22	109247	1	PULLER & PIN
23	109248	1	PULLER & PIN
24	783506	3	BLADE SPINDLE
25	005116	12	CS .375-16 X 1.375 HX G5
26	783738	1	CS .625-11 X 3.00 FULL HX
27	058776	3	NT .312-18 HXZY NL
28	053199	1	NT .500-13 HX JAM ZNYC
29	767962	2	FW .531 X 1.063 X .090 SAE
30	031997	1	ANTI-SCALP WHEEL
31	781708	1	CS .500-13X4.250 HX G5

NOTES:

1. Torque to 160 Nm.

48" Rear Discharge Deck



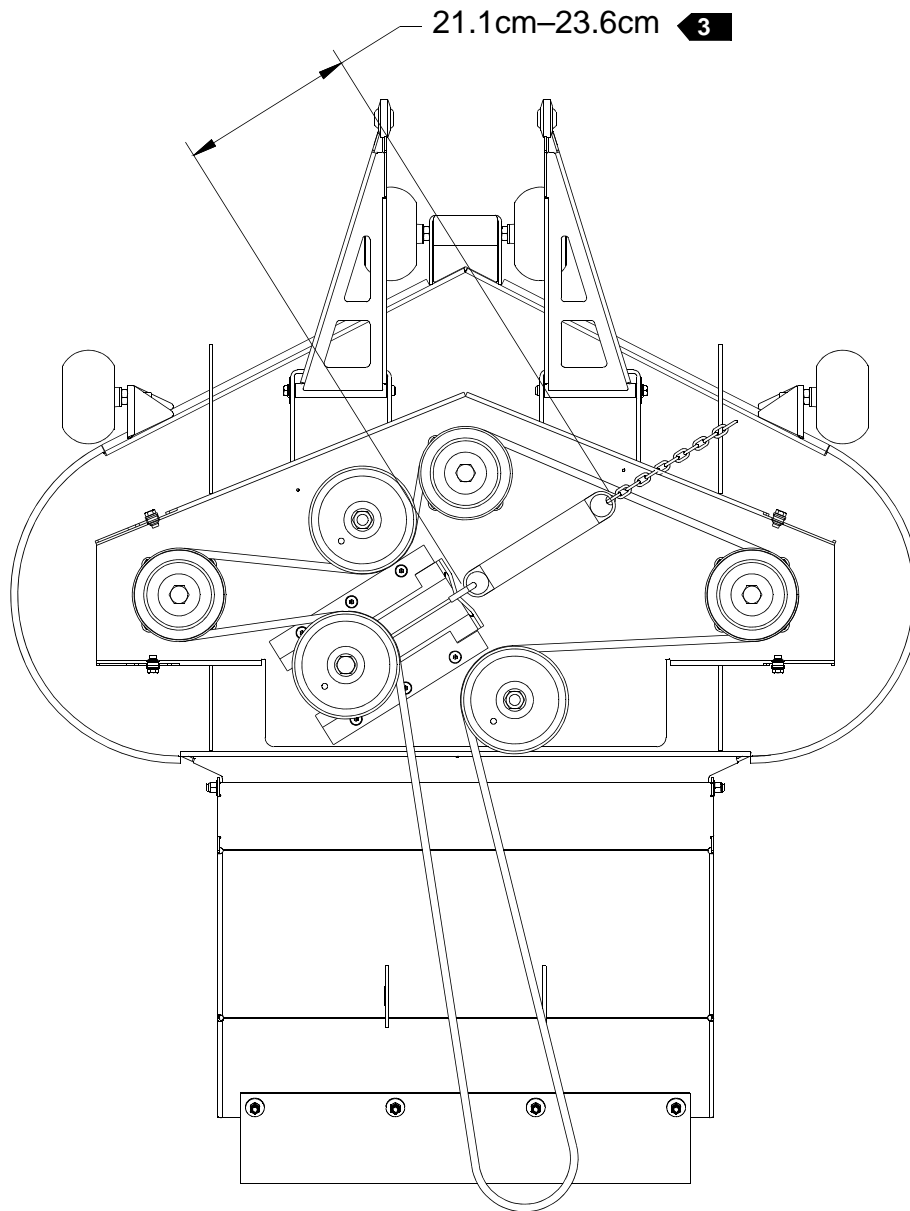
48" Rear Discharge Deck

INDEX NO.	PART NO.	QTY.	DESCRIPTION
1	550478	1	LS PULLEY COVER (WITH DECALS)
2	768523	4	FW .343 X .687 X .051/.080H
3	064006	4	CS .312-18 X .625 HX G5
4	550477	1	RS PULLEY COVER (WITH DECALS)
5	602562	2	NO SERVICE DECAL
6	793976	1	48" DECK ID DECAL
7	791335	1	BELT, B 143" EL
8	058776	4	NT .312-18 HXZY NL
9	712927	4	FW .344 X 1.00 X.12 HRD Z
10	113809	1	DISCHARGE SHIELD
11	767954	2	FW .406 X .812 X .060 SAE
12	086660	2	NT .375-16 HXZY NL
13	025395	2	CB .375-16X 1.00 G5 ZNY
14	016253	4	CB .312-18X .750 FUL ZN
15	601864	1	RUBBER DISCHARGE FLAP
16	601123	3	BLADE, 16.50"-L-F-CW
17	782474	3	CW .631 X 2.250 X .187 PNT
18	781872	3	CS .625-11 X 1.25 HX G5 Z

NOTES:

1. Do not torque nut; the discharge shield must pivot freely.
2. Torque to 160 Nm.

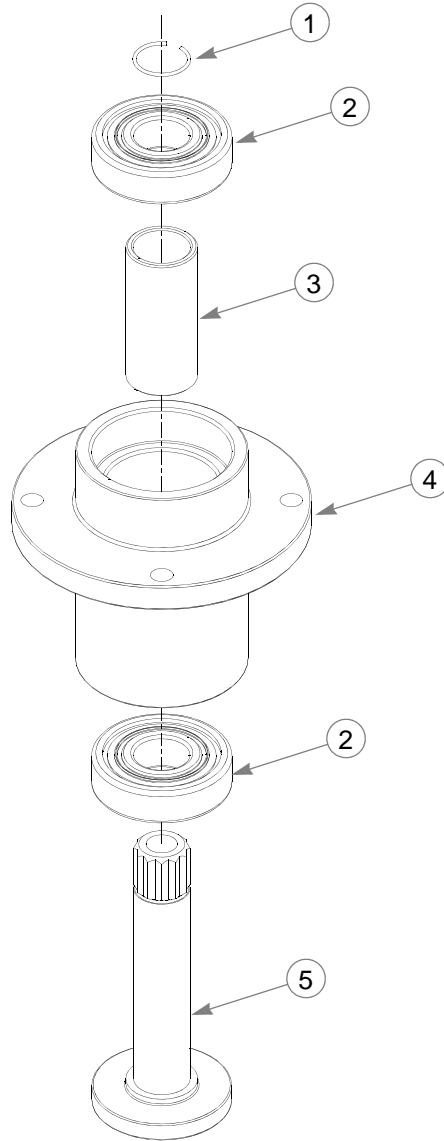
48" Rear Discharge Deck Belt Routing & Tensioning



NOTES:

3. Spring length after tensioning new belt. Measured from the outside of one hook to the outside of the opposite hook with the deck set at cutting height.
4. Route belt as shown.

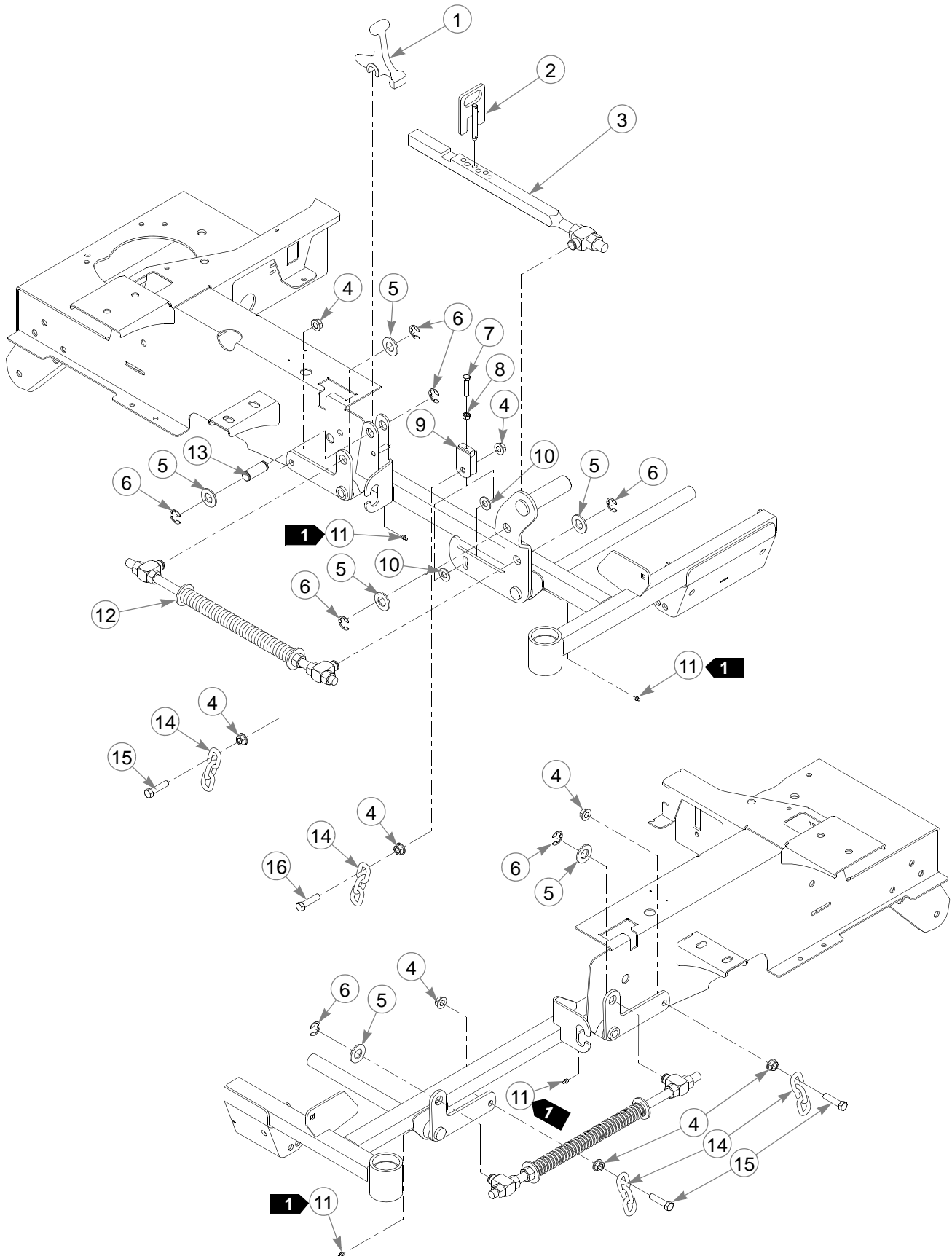
Spindle Assembly—783506



INDEX NO.	PART NO.	QTY.	DESCRIPTION
1	783548	1	BLADE SPINDLE RING RETAINER
2	783555	2	BLADE SPINDLE BEARING
3	783530	1	BLADE SPINDLE SPACER
4	783514	1	BLADE SPINDLE HOUSING
5	783522	1	BLADE SPINDLE SHAFT

NOTES:

Deck Lift



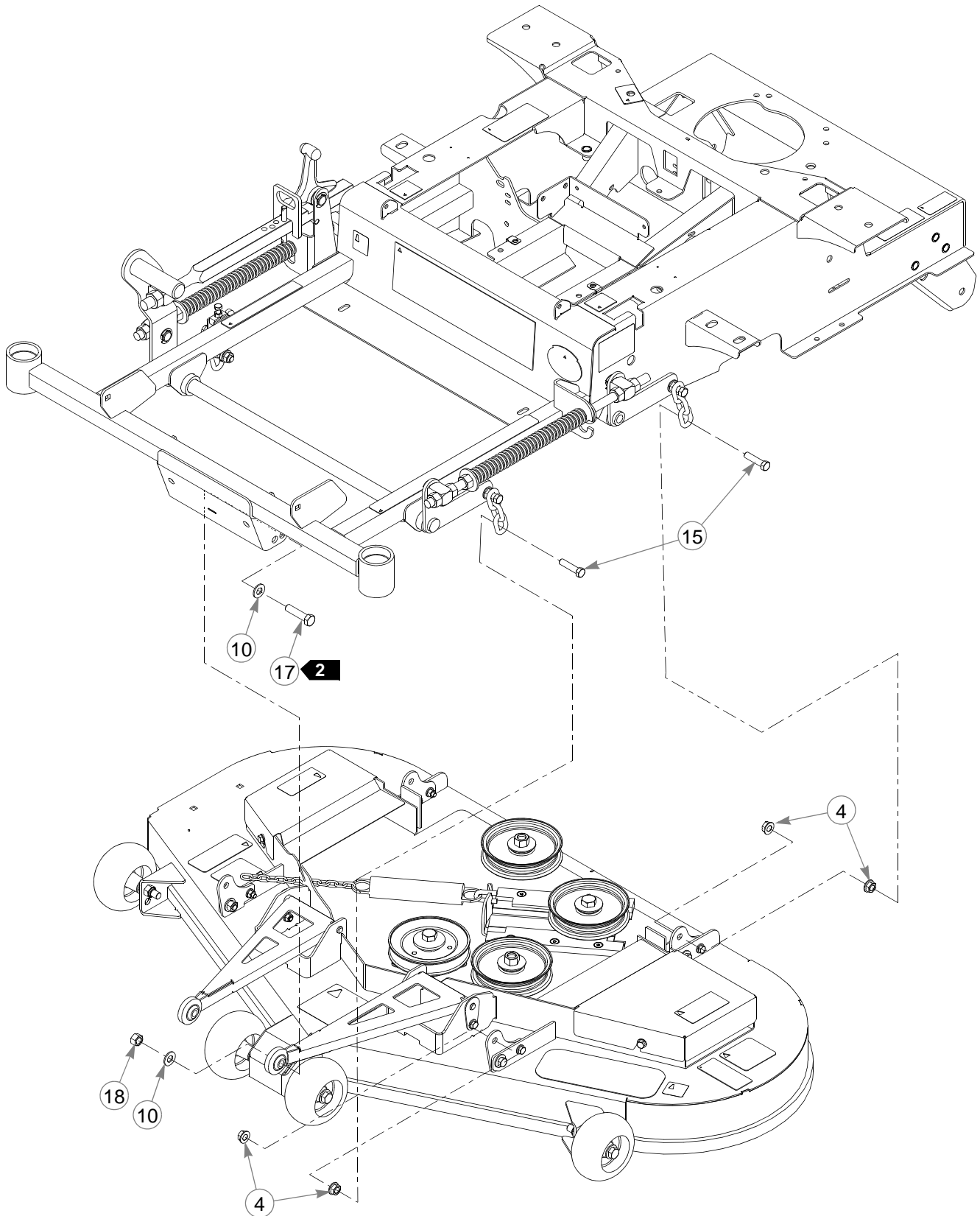
Deck Lift

INDEX NO.	PART NO.	QTY.	DESCRIPTION
1	348318	1	STOP HANDLE
2	348284	1	HEIGHT ADJUSTMENT STOP
3	784488	1	DECK LIFT INDICATOR
4	704643	16	NT .437-14 HX FLG ZN
5	601681	6	FW .781 X1.50 X.120 ZNYC
6	781294	7	CLIP E, 1.00 X .625 X .050
7	756270	1	CS .312-18 X 1.50 FLTHR G
8	034272	1	NT .312-18 HX G5 ZNYC
9	348458	1	DECK LEVELER YOKE W/A
10	767962	6	FW .531 X 1.063 X .090 SAE
11	015495	4	STRAIGHT GREASE FITTING
12	782995	2	DECK LIFT SPRING
13	781229	1	CE .750 X 2.25 X 1.75 HEADLESS
14	360131	4	DECK LIFT CHAIN (3 LINKS)
15	055749	7	CS .437-14 X 1.750 HX G5 ZNYC
16	781831	1	CS .437-14 X 1.750 FULTH

NOTES:

1. Apply grease to zerks.

Deck Mounting Hardware



Deck Mounting Hardware

INDEX NO.	PART NO.	QTY.	DESCRIPTION
17	078949	2	CS .500-13X 2.00 GR ZN
18	008193	2	NT .500-13 HX G5 ZN

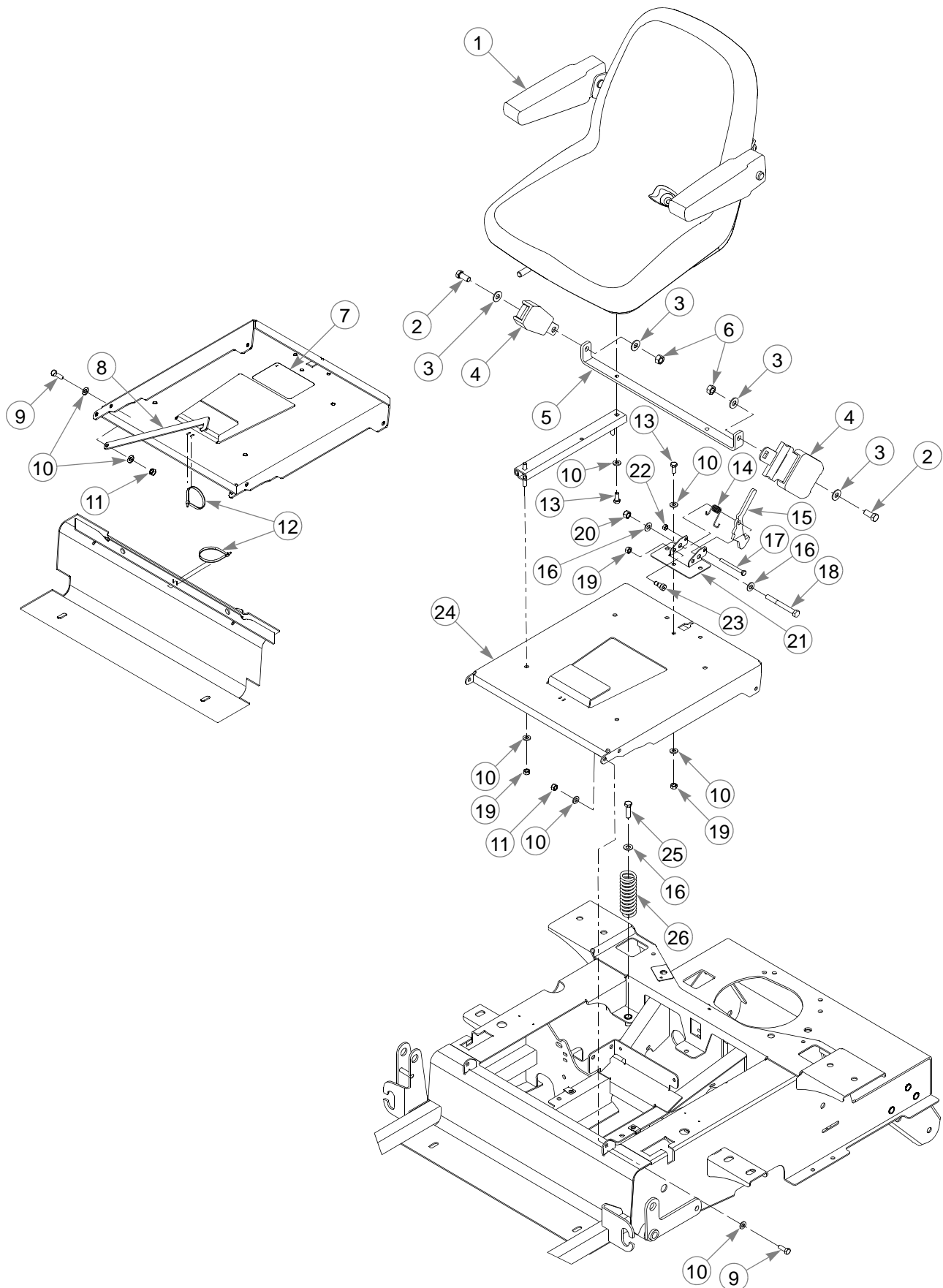
NOTES:

2. Install in rear hole of frame bracket.

Section 8

Seat	8-2
ROPS.....	8-4

Seat



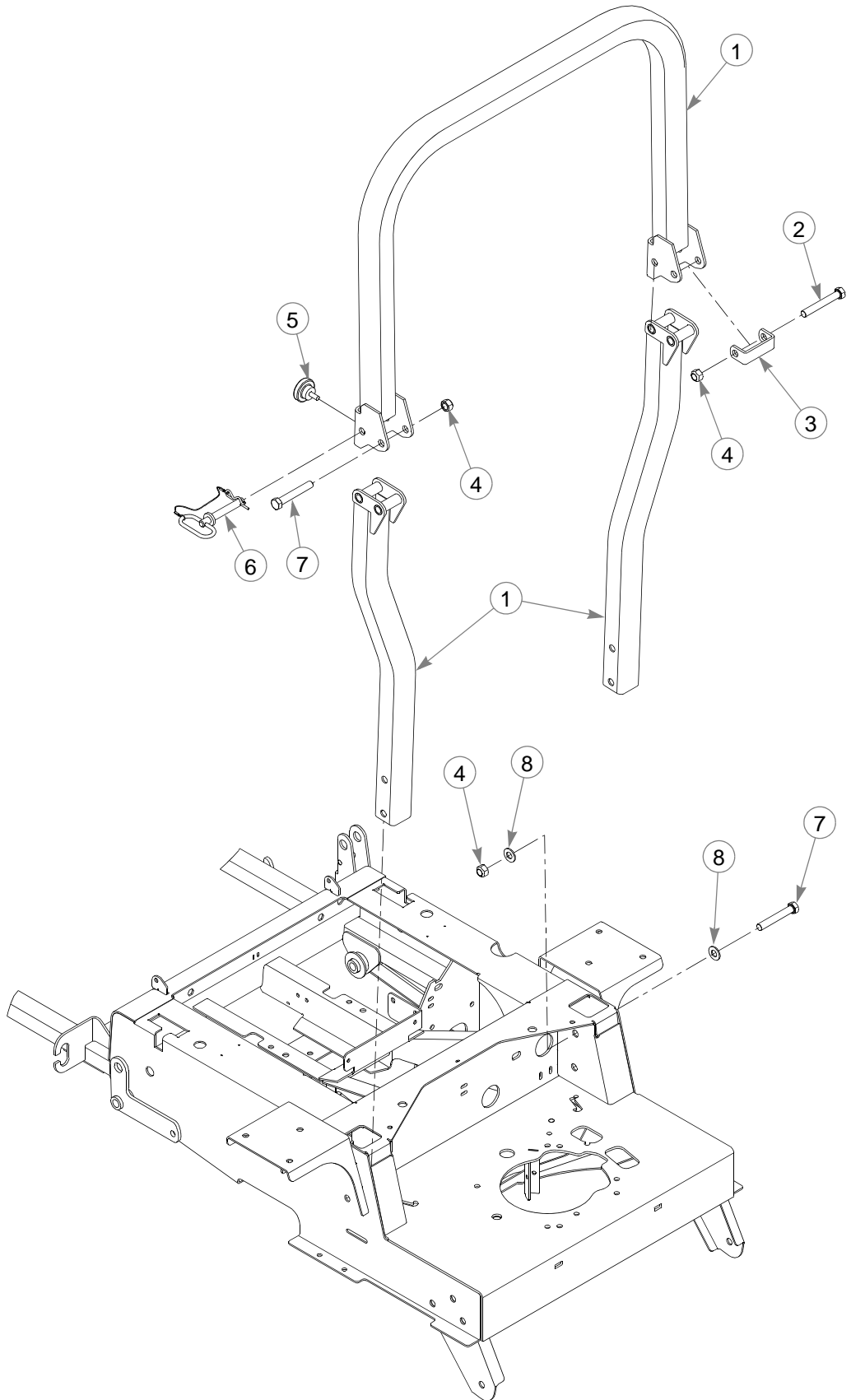
Seat

INDEX NO.	PART NO.	QTY.	DESCRIPTION
1	793661	1	STANDARD SEAT
2	797076	2	CS .437-20 X 1.00 HX G8 ZNYC
3	017129	4	FW .440 X 1.000 X .083 ZNY
4	601444	1	SEAT BELT
5	794610	1	SEAT BELT CROSS BAR
6	704635	2	NT .437-20 HX GR5 ZNYC
7	601815	1	BATTERY WARNINGS DECAL
8	109240	1	SEAT PAN STOP
9	064014	3	CS .312-18 X .875 HX G5 ZN
10	768523	18	FW .343 X .687 X .051/.080H
11	058776	3	NT .312-18 HXZY NL
12	000331	2	WIRE TIE, SMALL/SHORT
13	034280	5	CS .312-18 X .750 HX G5
14	783910	1	TORSION SPRING
15	603101	1	SEAT LATCH
16	767954	4	FW .406 X .812 X .060 SAE
17	794156	1	CS .250-20 X 2.750 HX G5
18	005108	1	CS .375-16 X 3.50 HX G5 Z
19	034272	8	NT .312-18 HX G5 ZNYC
20	086660	1	NT .375-16 HXZY NL
21	114203	1	SEAT PAN BRACKET
22	024927	1	NT .250-20 HX GR.5 ZNYC
23	754358	1	SB .375 X .375 SH .312-18
24	550855	1	SEAT PAN (WITH DECAL)
25	052860	2	CS .375-16 X 1.25 HX G5 ZN
26	601450	2	SEAT SPRING, 150 LB/IN

NOTES:

1. Service parts available for seat;

PART NO.	DESCRIPTION
793307	SLIDE KIT
793315	SEAT SWITCH
797464	ARMREST ASSY LH RND
797472	ARMREST ASSY RH RND
797480	ARMREST W/O BRACKET
793273	ARMREST STOP ASSEMBLY



ROPS

INDEX NO.	PART NO.	QTY	DESCRIPTION
1	601439	1	ROPS KIT (WITH DECALS & HARDWARE)
2	061812	1	CS .500-13 X 3.500 HX GR5 ZN
3	601472	1	ROPS STOP
4	023317	6	NT .500-13 UNT LK G8 ZN
5	601470	2	KNOB, HAND FOR ROPS
6	601471	2	LYNCH PIN W/ LANYARD
7	077859	5	CS .500-13X 3.250 HX G5 ZN
8	767962	8	FW .531 X 1.063 X .09 SAE HRD ZN
9	601635	2	ROPS DECAL

NOTES:

Numerical Index

Part No.	Page No.	Part No.	Page No.	Part No.	Page No.
Index					
Part Numbers					
000307	5-4	061101	4-3	550814	7-11
000323	5-4, 5-7	061812	8-5	550855	8-3
000331	3-3, 5-3, 5-7, 6-5, 8-3	064006	7-7, 7-15	600213	1-1
005108	3-9, 8-3	064014	8-3	600221	3-5
005116	3-5, 7-5, 7-13	068478	1-1	600296	7-5, 7-13
008193	7-21	068551	3-3, 3-5	600668	4-3
011320	2-5, 7-7	070664	5-3	600684	4-4
015495	7-19	077859	8-5	600759	3-3
015511	4-5	078949	7-21	600767	3-3
015818	5-4, 5-7	080655	3-9	600880	3-3
016253	5-3, 7-15	086660	2-5, 3-9, 7-7, 7-15,	600972	3-3
016410	3-3		8-3	600974	3-3
016816	3-9	102707	6-5	600975	3-3
016972	7-5, 7-13	107881	3-3	600976	1-1, 3-3
017129	8-3	107892	3-9	600979	1-1, 3-3
019521	4-4, 4-5	107893	3-9	600981	3-5
023317	8-5	108225	7-7	600987	3-3
023655	3-5, 3-9	108227	7-7	600991	3-9
024927	3-5, 6-3, 8-3	108283	1-1	600994	2-3
025007	3-3, 7-5, 7-13	108847	2-6	601001	3-3
025296	3-3, 4-3	108968	3-5	601018	3-3
025395	2-5, 7-7, 7-15	109202	3-9	601051	3-9
028118	3-3, 7-5, 7-13	109203	3-9	601053	6-5
029868	6-3	109240	8-3	601069	2-3, 7-3, 7-11
029876	3-5, 5-3	109247	7-5, 7-13	601084	3-3
031997	2-6, 7-5, 7-13	109248	7-5, 7-13	601087	3-9
034272	3-3, 3-5, 5-3, 5-7,	109318	3-5	601088	3-3
	7-5, 7-13, 7-19, 8-3	109941	1-1	601095	6-5
034280	5-7, 7-5, 7-13, 8-3	111875	4-3	601098	6-5
036236	3-5, 5-3	112448	7-7	601099	2-3
036384	3-3	112828	5-3	601118	5-3
038828	3-3	112886	1-1	601123	1-1, 7-15
041152	3-5	113946	5-3	601131	3-9
043570	5-3, 5-7	114203	8-3	601221	3-3
045898	6-5	13809	7-15	601403	3-3
048553	3-3	259812	7-5, 7-13	601404	3-3
050161	5-3	333724	1-1	601410	3-9
052860	2-6, 8-3	344267	2-6, 4-3	601421	2-3
053199	7-5, 7-13	348284	7-19	601433	3-3
054502	2-5, 2-6, 3-9, 5-3,	348318	7-19	601434	7-5, 7-13
	7-5, 7-13	348417	6-3	601439	8-5
055749	7-19	348458	7-19	601444	8-3
055822	5-7	350884	7-5, 7-13	601450	8-3
055939	3-3, 3-5, 3-9	360131	7-19	601470	8-5
055939	6-3	361295	3-5	601471	8-5
055947	6-5	366625	4-3	601472	8-5
056077	5-3	548768	2-5	601529	5-7
058776	5-3, 7-5, 7-13, 7-15,	550454	6-5	601624	7-3
	8-3	550477	7-7, 7-15	601635	8-5
059832	6-5	550478	7-7, 7-15	601681	7-19
061077	4-3	550752	7-3	601806	7-7
		550776	2-3	601815	8-3

Part No.	Page No.	Part No.	Page No.	Part No.	Page No.
601837	7-3, 7-11	727172	7-3, 7-11	784439	3-5
601843	7-7	744276	5-3	784488	7-19
601864	7-15	745059	5-7	784603	4-3
601892	7-3, 7-11	747402	4-5	785048	5-3
601941	3-3	754358	8-3	785139	2-3
601967	2-3	756270	7-19	785154CE	2-3
601993	2-3	765339	3-9	785220	2-3
602041	2-3	767954	2-5, 2-6, 3-3, 3-9,	785295	5-7
602233	6-5		5-3, 7-5, 7-7, 7-13,	785485	2-5
602562	2-3, 7-7, 7-15		7-15, 8-3	785493	2-5
602591	7-7	767962	2-6, 7-5, 7-13, 7-19,	785634	1-1
602680	5-3		8-5	785808	6-5
602699	5-3	768515	3-3, 3-5, 5-3, 6-5	786103	4-5
602708	5-3	768523	3-3, 3-5, 3-9, 5-3,	786731	4-3
602710	6-5		5-7, 6-3, 7-5, 7-7,	786848	3-3
602716	1-1		7-13, 7-15, 8-3	788166	2-6, 7-5, 7-13
602882	1-1	769166	6-5	789776CE	2-3
602883	1-1	770867	2-6	791251	5-3
602901CE	1-1	771428	6-3	791335	1-1, 7-7, 7-15
602916	5-7	776310	2-3	791848	2-3
602977	5-7	776476	6-5	792689	7-5, 7-13
602978	5-7	778365	6-5	793273	8-3
602980	5-3	781153	3-3	793307	8-3
602982	5-4	781229	7-19	793315	8-3
603057	7-5, 7-13	781260	3-6	793661	8-3
603101	8-3	781294	7-19	793976	7-7, 7-15
603158	5-7	781302	7-5, 7-13	794156	8-3
603209	5-4	781419	7-3, 7-11	794446	3-3
603255	5-3	781567	7-5, 7-13	794503	7-3, 7-11
603273	5-3	781708	2-6, 7-5, 7-13	794610	8-3
603293	5-4	781831	7-19	794644	6-3
603306	5-7	781856	7-5, 7-13	795757	7-7
704163	3-5	781872	7-5, 7-7, 7-13, 7-15	796219	5-3
704635	8-3	781922	3-5	796516	5-3
704643	7-19	782474	7-5, 7-7, 7-13, 7-15	796623	1-1, 7-7
704932	6-5	782995	7-19	797076	8-3
705160	5-3	783506	7-5, 7-13	797464	8-3
705954	4-3	783514	7-17	797472	8-3
706168	3-5	783522	7-17	797480	8-3
710087	3-3	783530	7-17	797910	7-5, 7-13
712257	6-5	783548	7-17	808485	2-3
712372	5-3	783555	7-17	808493	2-3
712919	5-7	783738	7-5, 7-13	929844	1-1
712927	7-15	783910	8-3	930131CE	1-1
712976	4-3	784066	4-4, 4-5	930180CE	1-1
714618	6-3	784223	4-3		