

FUJII®

SPRAY

**Spray With
Confidence!**

Fuji Industrial Spray Equipment LTD.
40 Magnetic Drive, #48
Toronto, ON M3J 2C4
Canada
Tel: (416) 650-1430
Toll-free: 1-800-650-0930
www.fujispray.com



HVLP Products Catalog

Customer Care and Technical
Support via email or telephone is
always through our Toronto, Canada
Head Office

Fuji Spray® is a Registered Trademark and Mini-Mite 3, Mini-Mite 4, Mini-Mite 5, Q3, Q4, Q5, GOLD Series, PLATINUM Series, Super 3 & 4, Semi-PRO2, Hobby-PRO2, salonTAN, miniTAN, hvlpTAN, Hi-Flex Hose, High-Efficiency Aircap, T-Models, M-Model are trademarks of Fuji Industrial Spray Equipment LTD.

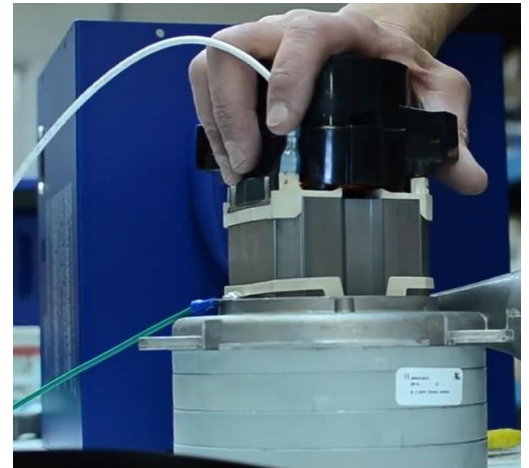
Enjoying the Benefits of HVLP since 1986

Fuji Spray is a leading North American manufacturer of HVLP paint spraying equipment. We build self-contained low pressure spray systems. We are also market leaders in HVLP tan spraying equipment and the only company with HVLP spray tan models UL & CSA approved for use as cosmetic devices.

Since 1986 Fuji Spray has designed and built HVLP systems that have set the standard for the industry. HVLP is 'Clean Technology.'

With 30+ years of experience and through innovation plus improved technology, Fuji Spray has continued to stay market leaders in their field. Our leading brand of products offers a wide range of spray systems to meet the needs of the professional and serious DIYer – all of this supported by exceptional customer service each and every time.

Fuji Spray headquarters is located in Toronto, Canada. Our products are designed with Canadian technology and are Canadian made.



FUJI[®]
SPRAY

DIY-PRO™ SERIES

Hobby-PRO 2™ & Semi-PRO 2™

Key Features:

- M-Model™ Non Bleed Spray Gun
- Additional Aircap sizes available from 0.8mm to 2.0mm
- Stainless Steel Nozzle & Needle
- Hi-Flex™ 25ft Hose
- Powerful 1400 watt 2 Stage Motor
- 14.2 lbs Turbine Weight
- Metal Turbine Case
- Handy Turbine Gun Holder
- Adjustable Fan Pattern Control Knob
- 24 Months – Parts & Labor Warranty

The Fuji Spray Hobby-PRO 2™ and the Fuji Spray Semi-PRO 2™ will allow the user to obtain an outstanding finish making you look like a Professional.

The DIY series is ideal for spraying walls, ceilings, doors, fences, shutters, cabinets, etc. It's the "Go To" system for workshop or residential use.



Part #2202





Part #2250

MODEL	Semi-PRO 2™	Semi-PRO 2™ Gravity	Hobby-PRO 2™
Spray Gun	M-Model™	✓	✓
Aircap Set	1.3mm	1.3mm	1.8mm
Cup Capacity	1 Quart (1000cc)	Gravity 400cc	1 Quart (1000cc)
Air Filters (2)	Dual #4009-2	✓	✓
Turbine Dimensions	11" x 8.6" x 8.1"	✓	✓
System Weight	25.2lbs (11.5kg)	✓	✓
Voltage ~Hz	110 -120 volts ~ 60Hz 220 -240 volts ~ 50Hz	✓	✓
AMPS	11.5 (110-120) 5.75 (220-240)	✓	✓
PSI	5	✓	✓

Essential Accessories:

- 4009-2 Turbine Filters
- 2039 Bottom Feed Cup Parts Kit
- 2030 400cc Gravity Cup Parts Kit
- 2049F 6ft Whip Hose For Semi-Pro 2™



All 110-120 volts systems are  approved
International Systems Shipped 

Mini-Mite PLATINUM™ SERIES

With the Mini-Mite PLATINUM™ Series you can spray cabinets, furniture, autos or pianos – in fact, anything wood or metal. It's a powerful, portable system for all fine-finishing.

Fuji Spray has designed a unique method of removing any heat build-up from the Turbine case. Excess heat is channeled to a Heat Dissipation Box™ located at the rear of the case.



Made In Canada

Key Features:

- Non Bleed Spray Gun
- Additional Aircap sizes available
- Stainless Steel Nozzle & Needle
- Hi-Flex™ 25ft Hose
- Heat Dissipation Box™
- Metal Turbine Case
- Noise Reduction Covers
- Handy Turbine Gun Holder
- Patented Fan Control Mechanism
- 24 Months – Parts & Labor Warranty

Part #2805-T75G



The Mini-Mite PLATINUM™ Turbines are equipped with a method to reduce noise. The Noise Reduction Covers™ house the Filters. Ambient air is entrained only from the rear effectively removing any Direct Sound Paths. Air is drawn in through specially designed 'Finger Slots' for optimum performance.

Part # GXPC-2804



The Mini-Mite 4 PLATINUM™ develops 9psi

Part # 2903-T70



The Mini-Mite 3 PLATINUM™ develops 6.5psi
In 2015 Voted **BEST IN CLASS!**

MODEL	Mini-Mite 3 PLATINUM™			Mini-Mite 4 PLATINUM™	Mini-Mite 5 PLATINUM™
Spray Gun	T70™	T75G™	GXPC	✓	✓
Cup Capacity	1 Quart (1000cc)	600cc Nylon	400cc Aluminum	✓	✓
Aircap Set	1.3mm	1.3mm	1.4mm	✓	✓
Air Filters (2)	PLATINUM™ Dual #7224-2			✓	✓
Turbine Dimensions	12" x 8.6" x 8.1"			✓	✓
Weight	22.8lbs (10.4kg)			23.6lbs (10.7kg)	24.6lbs (11kg)
Voltage ~Hz	110 -120 volts ~ 60Hz 220 -240 volts ~ 50Hz			✓	✓
AMPS	12 (110-120) 6 (220-240)			13 (110-120) 6.5 (220-240)	14.5 (110-120) 7.25 (220-240)
PSI	6.5			9	9.5

Every Fuji Mini-Mite PLATINUM™ System contains...
The Turbine, Choice of Fuji Spray Gun (T70, T75G or GXPC) with Cup, 25ft Hose with Quick-Connect, Air Control Valve, User Manual, Viscosity Cup, Wrench, Cleaning Brush.
The Mini-Mite 5 PLATINUM™ also includes the 5 for 5 Bonus Kit

Q PLATINUM™ SERIES

The Q5 PLATINUM™ = QUIET!

Introducing the Ultimate Turbine!

The Q5 PLATINUM™ Turbine with its powerful 5-stage motor producing approximately 9.5psi is the latest addition to the Fuji lineup. The extra power allows for less thinning of viscous paints and achieves finer atomization.

The Q5 features many new technological advancements. Incorporated into its design is a proprietary Heat Dissipation Box (HDB). The HDB expels excess heat from the turbine resulting in much cooler operating temperatures.

It's the quietest 5-stage HVLP Turbine on the market!



The Fuji noise reduction method is patented in the USA. Research & Development was conducted by engineering staff at Carleton University in Canada under a partial Government grant program. Noise is reduced by over 50% making the Fuji Q-Series the quietest Turbine available today.

Another key feature is the Variable Speed Control that offers you the ability to adjust the psi/cfm to the optimum adjustment needed to perfectly atomize your coating. This is achieved while reducing the overspray/bounce back to an absolute minimum.

Use your Q5 PLATINUM™ for light tasks or for heavy-duty projects.

What's included with every Fuji Q5 PLATINUM™ System?

The Turbine, Choice of Fuji Spray Gun (T70, T75G or GXPC) with Cup, 25ft Hose with Quick-Connect, Air Control Valve, User Manual, Viscosity Cup, Wrench, Cleaning Brush and 5 for 5 Bonus Kit.



BONUS 5 for 5!

Q5 PLATINUM™ package – 5 for 5.

- 6' Whip Hose
- Wet Film Gauge
- 19 pc Spray Gun Cleaning & Maintenance Kit with Lubricant
- Extra Turbine Filter
- "Always Measure" Booklet – Record your material preparation and results



Made In Canada

At 15ft the Q5 PLATINUM™ Turbine is only 63 dba, at 20ft it is 60 dba. Normal Conversation is 60 dba.

This 5-stage motor develops 9.5psi





Key Features:

- Patented Noise Reduction
- Non Bleed Spray Gun
- Additional Aircap sizes available
- Stainless Steel Nozzle & Needle
- Hi-Flex™ 25ft Hose
- Heat Dissipation Box™
- Metal Turbine Case
- Handy Turbine Gun Holder
- Patented Fan Control Mechanism
- 24 Months – Parts & Labor Warranty



At 15ft the Q3 PLATINUM™ Turbine is only 62 dba, at 20ft is it 59 dba. Normal Conversation is 60 dba.

Q PLATINUM™ SERIES

Q3 & Q4 PLATINUM™ = Quiet

The Q PLATINUM™ Turbines are for those who simply want the BEST!

It's the quietest HVLP Turbine on the market!

The Q-Series Systems are perfect for fine-finishing of cabinets, furniture, as well as medium to heavy painting projects.



At 15ft the Q4 PLATINUM™ Turbine is only 61 dba, at 20ft it is 58 dba. Normal Conversation is 60 dba.

MODEL	Q3 PLATINUM™			Q4 PLATINUM™	Q5 PLATINUM™
	T70™	T75G™	GXPC		
Spray Gun	T70™	T75G™	GXPC	✓	✓
Cup Capacity	1 Quart (1000cc)	600cc Nylon	400cc Aluminum	✓	✓
Aircap Set	1.3mm	1.3mm	1.4mm	✓	✓
Air Filters	Single #5029			✓	✓
Turbine Dimensions	14.87" x 11.5" x 9"			✓	✓
Weight	30.6lbs (13.9kg)			31.2lbs (14.1kg)	32.6lbs (14.8kg)
Voltage ~Hz	110 -120 volts ~ 60Hz 220 -240 volts ~ 50Hz			✓	✓
AMPS	12 (110-120) 6 (220-240)			13 (110-120) 6.5 (220-240)	14.5 (110-120) 7.25 (220-240)
PSI	6.5			9	9.5

What's included with every Fuji Q-PLATINUM System?

The Turbine, Choice of Fuji Spray Gun (T70, T75G or GXPC) with Cup, 25ft Hose with Quick-Connect, Air Control Valve, User Manual, Viscosity Cup, Wrench, Cleaning Brush

All 110-120 volts systems are



International Systems Shipped



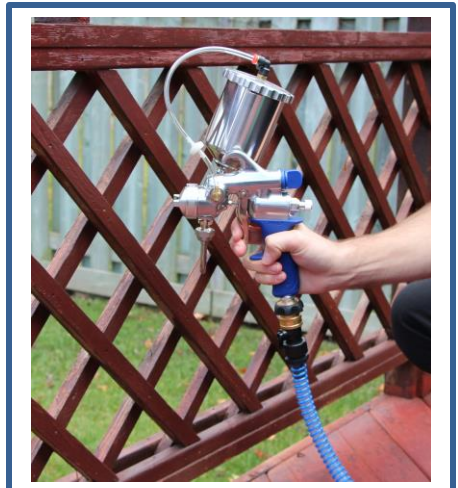
Stunning Fine Finish

Cabinetmakers, Carpenters, Woodworkers... This industry is very reliant on HVLP Turbines! Many tradespeople in the woodworking industry make use of HVLP Turbine Systems to finish their product. Such a stunning finish can easily be achieved with a FUJI!

A Leader in HVLP Paint Sprayers

Superb Finish & Ultimate Control!™

Whether it's used for woodworking, simple household tasks or to refinish an old tub, Fuji Spray has got you covered from start to finish. HVLP has now become the spray equipment of choice among contractors, industrial and commercial finishers for fine finish applications.



Ultimate Control™

Ultimate control, perfect for refinishing tasks...

A Fine Finish is easily achieved with a FUJI. Many makers of piano's and guitars are able to achieve this outstanding finish with the use of our HVLP equipment.

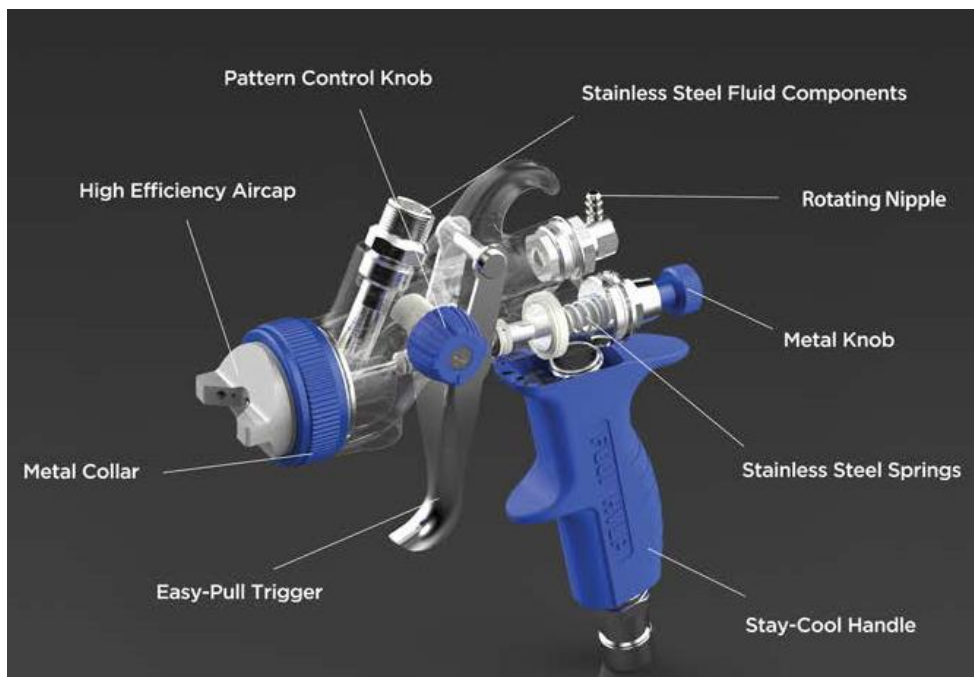
Fuji Spray® - Spray Guns

T-Model™ Spray Gun

Fuji Spray® developed the T-Model™ Spray Gun (USA Patented) to meet the rising demand for a spray gun that offers ultimate flexibility and control.

The T-Model™ delivers an enhanced spray pattern for exceptional performance. The new sleek design is ergonomic and well balanced.

Overall the T-Model™ is 20% lighter which allows for easy maneuvering and less fatigue on the operator.



The Fuji T-Model™ Spray Gun features an exclusive side-mounted Pattern Control Knob to adjust the **size of the fan**. This knob allows you to switch from circle to wide pattern or anywhere in between.

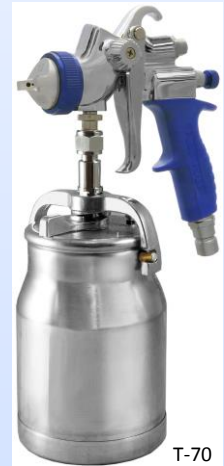
Simply turn the knob counter-clockwise for a smaller pattern and clockwise for larger. This method provides full incremental adjustment of the fan size. The Fan Pattern is adjustable from 1" to 15" from 8" distance. Smaller than 1" is achieved by moving closer to the object being sprayed.

Stay-cool Handle never gets hot.

Seven different High-Efficiency™ Aircaps sets available ranging from 0.8mm – 2.5mm.

With the New Fuji T-Model™ you will achieve that flawless performance and remarkable outcome every time you use it.

An excellent choice for any Fine finishing and cleaning is a snap!



Non Bleed HVLP T-Model™ Spray Gun also features the following...

- Canadian technology
- 1.3mm Aircap set
- Center mounted 600cc Nylon gravity cup or 1 Qt. bottom feed cup
- Stay-cool nylon handle (fitted over a metal tube)
- Metal fluid knob and collar
- Rear rotating nipple for pressure tubes – makes for easier adjustment especially for those who are left handed.

The Fuji T-Model™ with all these exceptional components is the leader in the market.



Fuji Spray® - Spray Guns continued...

The benefits of Fuji Spray® Non-Bleed Spray Guns include...

- Less blowing around of shop dust and negligible turbulence in the spray area.
- Less paint buildup on the tip of the Fluid Nozzle.
- Spray gun noise (hiss of air) appears to be lessened, because now the hiss of air is intermittent.

9600-GXPC™ Spray Gun



This model features the side mounted 400cc Gravity Cup and the tilt feature which easily allows the operator to spray in any direction including upwards. The angle of the Gravity Cup 400cc (.85 Pint) can be adjusted. This cup is now pressurized so you have the full range of spraying available to you.

This G-XPC™ non-bleed Gravity Spray Gun also features an exclusive side Pattern Control Knob to adjust the Fan Size and comes installed with a 1.4mm Aircap (High-Efficiency™) which is best for fine finishing with lacquers, enamels, polyurethanes, latex for trim, water based coatings and more.

The Fan Pattern is adjustable from 1" to 15" from 8" distance. Smaller than 1" is achieved by moving closer to the object being sprayed.

M-Model™ Spray Gun



The Fuji M-Model™ Spray Gun features a Non Bleed Gun with Rear Pattern Control Knob. An Aircap Set #3 (1.3mm) is installed.

The 7001 M-Model™ Spray Gun with 1 Qt. Bottom Feed cup is perfect for any weekender or hobby enthusiast.

The 7002G M-Gravity Spray Gun has a 400cc aluminum gravity cup which is side mounted with a U-Tube. Designed for the weekender or hobby enthusiast and allows the operator to easily get into tight spots.

#9622 Touch-Up Turbine Spray Gun

Our Touch-Up Turbine Spray Gun can be used with any HVLP Turbine. Just attach with the quick connect coupler on your hose and begin spraying!

- Assembled with an 8oz mini cup.
- Installed with 1.0 mm stainless steel needle, nozzle and aluminum aircap.
- Additional size 1.8 mm aircap set available as an accessory.
- Spray pattern can be adjusted from round ¼" to 6" spray pattern.

Please Note: Will fit most other turbine systems, however will not work with an air compressor.



Fuji Spray® – Accessories

#2049F Flexible Whip Hose



Lightweight 6ft. Hose is highly flexible. Takes weight off the wrist and the flexibility allows for effortless maneuverability of the spray gun. An added feature is that the air through the spray gun is not as hot (due to the fact the spray gun is now 6ft further from the Turbine). This often alleviates problems with fast drying lacquers (and Latex House Paint) drying too quickly.

Please note: this hose cannot be connected to the Turbine – it is an extension hose and must only be connected to the end of the standard 25ft Hose.

#5432 2Qt. Pressure Pot Assembly Kit

This Kit has everything you need to add additional material capacity using your 4 or 5 stage Fuji Spray® HVLP System.

Features:

- Twice as much material capacity than your bottom feed spray gun, and more than three times the capacity of your gravity feed spray gun.
- Specially designed pot, lid, and adapter.
- No need for bulky compressor. Fuji Spray® 4 or 5 stage Turbine pressurizes the 2Qt. cup.
- Ability to spray at any angle, including upside down.
- Smaller profile to reach tight corners.

Please note: You will need both a standard 25ft hose plus a whip hose in order to use your Fuji Spray 2Qt. Pressure Pot.

Important: If you are using model 9600-G – GXPC Spray Gun, you will also need a 9060 L-Fitting.



#5330 Gravity Feed Gun Holder Stand



This 2 piece Gravity Feed Gun Holder allows the user to fill the gravity feed Spray Gun without assistance. Rest your Fuji Gravity Spray Gun while you are refilling the cup or in-between coats. Will also fit other standard size center mounted gravity Spray Guns.

Please note that this is not compatible with the 9600-G and the 7002G Spray Gun. It is also not compatible with other side-mounted spray guns.

Fuji Spray® – Accessories continued...

5100 T-Series Aircap Sets



High-Efficiency™ Aircap for T-Series spray gun (5100 Series)

- Colour Coated for easy identification
 - 7 different sizes ranging from 0.8mm to 2.5mm
- ❖ For M-Model please refer to the 7020 series
❖ For XPC or GXPC please refer to the 8050 series
❖ For an older XT or GT-X Please refer to the 9001 series

Please refer to “The Quick Reference Sheet” to help with Aircap Selection

#5137 Carry Case for Aircap Sets

Keep your Aircap sets neatly in one place.
Our Aircap set Carry Case can store 4 sets of Needles, Nozzles and Aircaps.
The T-Series (Part 5100-) and the M-Series (Part 7020-) will fit into this case.

Please note that the GXPC-Series (Part 8050-) is not compatible with this case.

****Case Only - Aircap sets not included****



#2039 Cup Parts Kit



Kit includes wearable parts that you should always have on hand.
3 each of the pressure tubes, cup gaskets and diaphragms.

Please note: If you own a Gravity Cup you would order one of the following Gravity Cup Parts Kits:

- For the **600cc Aluminum Gravity Cup** please order part **#2060** (600cc/1000cc Gravity Cup Parts Kit)
- For the **400cc Gravity Cup** please order part **#2030** (400cc Gravity Cup Parts Kit)
- For the **600cc Nylon Cup** please **ONLY** order part **# 2024L-5** (Pressure Tubes Only)

#3100 Spray Gun Cleaning Kit with Lubricant

Complete 19pc Spray Gun Cleaning & Maintenance Kit with Lubricant.

This is designed for all types of spray guns & equipment.

Includes an extra-long 12" pick-up tube brush, HVLP brush, body cavity brush, detail end brush, nylon bristle parts brush, 5-pc. micro brush set, 6-pc. precision needle set, and spray gun lubricant.



Fuji Spray® – Accessories continued...

Fuji Spray® Cups



A variety of cups available:

- #2041 1QT Aluminum Cup
- #2041T 1QT Aluminum Cup Teflon Coated
- #2042 1QT Aluminum Cup Assembly
- #9730 3oz Gravity Cup Assembly – T-Series
- #9740 400cc Gravity Cup Assembly – T-Series
- #9760 600cc Aluminum Gravity Cup Assembly – T-Series
- #9775 1000cc Gravity Cup Assembly – T-Series
- #9080 250cc Mini Cup Assembly plus 2 extra cups
- #9850 400cc Gravity Cup Side Mounted GXPC
- #9860 600cc Nylon Gravity Cup Assembly T-Series

#9960 U-Tube 400cc Gravity Cup Conversion Kit

Converts any Fuji Spray Gun from Bottom Feed to Gravity.
Can be used with other spray guns. Includes 400cc Aluminum Gravity Cup, Stainless Steel U-Tube, Pressure Tube with Check Valve.



#5029 Q Series Filters



Turbine filter fits all Q-Series turbines. Always ensure that upon installation, the filter fills the whole filter enclosure and is flush with the bottom of the case.

IMPORTANT* the turbine does not have to be taken apart to remove or replace the filter. This filter is a friction fit - it can be removed and replaced in seconds. We definitely advise having an extra filter on hand to rotate when necessary.

#7224-2 Mini-Mite PLATINUM Filters

These Turbine filters fit the Mini-Mite PLATINUM™ Turbines only. These Mini-Mite PLATINUM™ filters (7224-2) are available in a 2-pack and have the shape of a hand, rather than a square.

Please Note: For previous model square shape Mini-Mite filters, please see part #4009-2



Fuji Spray® – Accessories continued...

#4009-2 DIY-PRO Series Filters & Mini-Mite Series (prior to July 2016)

These Turbine filters fit the DIY-PRO Series and any Mini-Mite Turbines owned prior to July 2016. These filters (4009-2) are available in a 2-pack and have the shape of a square, rather than a hand.

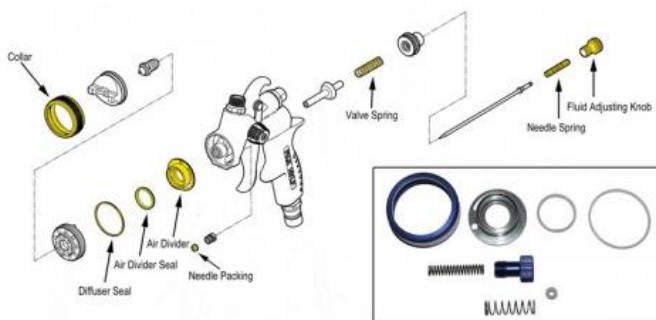


Please Note: For newer mini-mite PLATINUM™ models please refer to the hand shaped filters, part #7224-2

#5262 Rebuild Kit for Fuji T70/T75 Spray Guns

This T-Model™ Rebuild kit includes:

- A Collar
- Diffuser Seal
- Air Divider Seal
- Air Divider
- Needle Packing
- Valve Spring
- Needle Spring
- Fluid Adjusting Knob



#7049 Extra 25ft Hose



The Fuji Hi-Flex™ hose is new and improved with a kink-free spring to prevent bending and obstructions. This 25ft hose is standard with all Fuji Spray systems. Also Includes a Brass Quick-Connect and Air Control Valve.

#7055 Heat Hose 3ft

3ft Heat Hose is heavy duty and reduces the heat of atomizing air.

Installed between the Turbine air outlet and the standard hose.

Used to prolong hose life and dissipate heat.

Fits all standard HVLP Turbines.





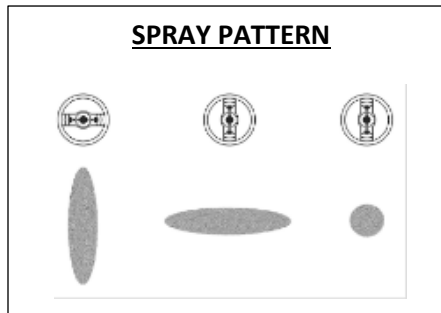
Quick Reference Sheet

AIR CAP SET INFORMATION		
SIZE	OUTPUT	USAGE
0.8mm	Fine (Finest Output)	Perfect for very fine work Also good for small surfaces and thinner viscosity fluids. Shading stains/inks and spray tanning. As well as touch-ups, zinc, dyes water-based finishes.
1.0mm	Fine to Medium	Great for most fine finishing including many water-based / borne coatings. Allows for a thinner, wet coat to be applied. Automotive enamel, airplane and marine finishes. Nitrocellulose lacquers, sealer, cellulose, acrylics, synthetics, polyurethane, stains, varnish, and primers.
1.3mm	Medium	Standard Air Cap. Similar to the 1.0mm but with more coverage. Automotive enamel, airplane and marine finishes. Nitrocellulose lacquers, water-based finishes, varnish, urethanes, enamel, latex for louver doors, trims and cabinets, and oil based paints.
1.5mm	Medium	Similar to 1.3mm but requires less thinning. Automotive enamel, airplane and marine finishes. Nitrocellulose lacquers, water-based finishes, varnish, urethanes, enamel, latex for louver doors, trims and cabinets, and oil based paints.
1.8mm	High	Ideal for larger surfaces, and thicker layers. Catalyzed lacquers, primers, varnish, urethanes, enamel, industrial coating (higher viscosity), sealers, polyurethane, oil based paints, epoxy enamels, plastic, adhesives, floor paving paints, latex (walls), splatter paints and multi fleck paints
2.0mm	High	Similar to the 1.8mm but with more coverage. Ideal for larger surfaces, and thicker layers. Catalyzed lacquers, primers, varnish, urethanes, enamel, industrial coating (higher viscosity), sealers, polyurethane, oil based paints, epoxy enamels, plastic, adhesives, floor paving paints, latex (walls), splatter paints and multi fleck paints.
2.5mm	Extra High	Suitable for even larger areas/walls & ceilings. Ideal for fast coverage. Stone finish, texture coating, industrial primers, latex (walls and ceilings), high viscosity industrial coating and nitrate dope. 2.5mm Air Cap set available only for the T-Model Spray Gun.

***Please Note:** Suggestions on usage should be used as a starting guide only. Experimentation is the best way to decide which setup works best. For the most part, setups ranging in size from 1.0-1.5mm should be ideal for most fine finishing applications.*

FINISH PROBLEM	SOLUTION
ORANGE PEEL	A rough finish indicating the material may be too thick. Thin material as appropriate and ensure proper air flow for better atomization
GRITTY FINISH	Indication of too thin a material. Thin product less and apply wetter coats
BLUSHING	Cloudy white appearance due to moisture. Use of a slowing agent will help. Uncommon with FUJI Spray Systems.
FISH EYES	Caused by Silicone or Oil Residue. Seal with 2-3 light coats and then apply wet coat. We do not recommend to use "Fish-Eye Drops"

VISCOSITY CUP INDEX	
FINISH	TIME (seconds)
Auto Cellulose	18-20
Lacquers	18-20
Enamels	20-25
Latex	20-30
Oil Based	20-25
Primers	30-40
Sanding Sealers	20-22
Stains	Undiluted
Creosote	Undiluted
Polyurethanes	20-25
Water Based Polyurethanes	Undiluted



For more information please contact us at:

Tel: (416) 650-1430

Toll-free: 800-650-0930

✉ email: info@fujispray.com

www.fujispray.com



Enjoy the Benefits of HVLP with a FUJI!

Exclusive to Fuji Spray®

Side Mounted Pattern Control Knob

Fuji Spray offers three different Spray Gun models featuring an exclusive side-mounted Pattern Control Knob to adjust the **size of the fan**. (T70, T75G and GXPC)

This knob allows you to switch from circle to wide pattern or anywhere in between. Unlike HVLP turbine spray guns with the front collar adjustment, the Pattern Control Knob offers full incremental fan size throughout the whole range.

Conveniently located at your fingertips, simply turn the knob counter-clockwise for a smaller pattern and clockwise for larger.

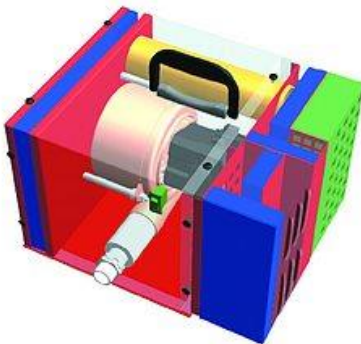


Patented Noise Reduction

The most desirable feature for any Turbine is to have it as quiet as possible. A standard Turbine sounds like a very loud vacuum cleaner.

Fuji Spray® has reduced Turbine noise levels by over 50% without causing any unwanted side effects such as overheating or air restriction. Fuji Spray® does not surround the Turbine Motor with soundproofing foam – this would simply cause overheating.

The method used by Fuji Spray® allows the Turbine Motor to sit in an all-metal enclosure the way that standard turbines do. The Fuji Spray® Q Turbines have Computer-Designed Airflow Configurations that completely eliminate the 'Direct Sound Paths' found on low to mid-priced HVLP Turbine Systems available today. Direct sound paths are responsible for the noise factor. Noise is reduced to less than 50% of previous levels. In fact, when the Fuji Spray® Q-Turbine is placed across the room, the low hiss of air passing through the spray gun is more noticeable than the Turbine.



Heat Dissipation Box™

The Mini-Mite PLATINUM™ and Q PLATINUM™ Series feature many new technological advancements. Incorporated into its design is a proprietary Heat Dissipation Box (HDB). The HDB expels excess heat from the Turbine resulting in much cooler operating temperatures. Less heat translates to longer motor life for your turbine. Because the hot air is routed to the rear of the Turbine and passes through 60 holes the process is silent.

