



SACRAMENTO STATE
COLLEGE OF ENGINEERING & COMPUTER SCIENCE

Hydra Remote Desktop

Version 1.5
March 26, 2020

Table of Contents

List of Figures	iii
1 Overview	5
2 Connecting to Remote Desktop on Windows.....	5
2.1 Prerequisites.....	5
2.2 Adding Local Devices and Resources on Windows	7
2.3 Changing Display Settings on Windows	8
3 Connecting to Remote Desktop on Linux (Ubuntu).....	10
3.1 Prerequisites.....	10
3.2 Adding Local Devices and Resources on Linux (Ubuntu)	13
4 Connecting to Remote Desktop on Mac.....	16
4.1 Prerequisites.....	16
4.2 Adding Local Devices and Resources on Mac	20
4.3 Changing Display Settings on Mac	22
Revision History	25

List of Figures

Figure 1: Remote Desktop Connection	5
Figure 2: Show Options	6
Figure 3: Options Menu	6
Figure 4: Password Field	7
Figure 5: Local Resources.....	7
Figure 6: Plus Button.....	8
Figure 7: Checkbox.....	8
Figure 8: Display Settings Windows.....	9
Figure 9: Display and Colors Windows.....	9
Figure 10: Disconnect	10
Figure 11: Terminal Server Client	11
Figure 12: Connection Details.....	12
Figure 13: Connect	12
Figure 14: Edit Connection.....	13
Figure 15: Share Folder	14
Figure 16: Disconnect	15
Figure 17: App Store	16
Figure 17: App Store Search Bar	16
Figure 18: Microsoft Remote Desktop 10.....	17
Figure 19: Magnifying Glass	17
Figure 20: Add Desktop.....	18
Figure 21: Add Desktop Info	19
Figure 22: Added Hydra Desktop.....	19
Figure 23: Enter ECS Credentials.....	20
Figure 24: Pencil Icon	20
Figure 25: Folders Tab.....	21
Figure 26: Pick a File and click Open.....	21

Figure 27: Click Save.....	22
Figure 28: Display Settings Mac.....	23
Figure 29: Disconnect	24

1 Overview

This is a tutorial on how to connect to the Engineering and Computer Science (ECS) terminal server Hydra on Windows, UNIX and Mac.

2 Connecting to Remote Desktop on Windows

2.1 Prerequisites

- Make sure you are connected to the internet!
- **NOTE:** As of October 16, 2019, connecting to Hydra outside of campus network will require SacVPN! To connect to SacVPN, you will need to use Global Protect. More information can be found here: [https://www.csus.edu/college/engineering-computer-science/computing-services/ internal/ documents/globalprotect-vpn.pdf](https://www.csus.edu/college/engineering-computer-science/computing-services/internal/documents/globalprotect-vpn.pdf)

1. Go to **Start**, scroll down to **Windows Accessories** and click **Remote Desktop Connection** (Figure 1).

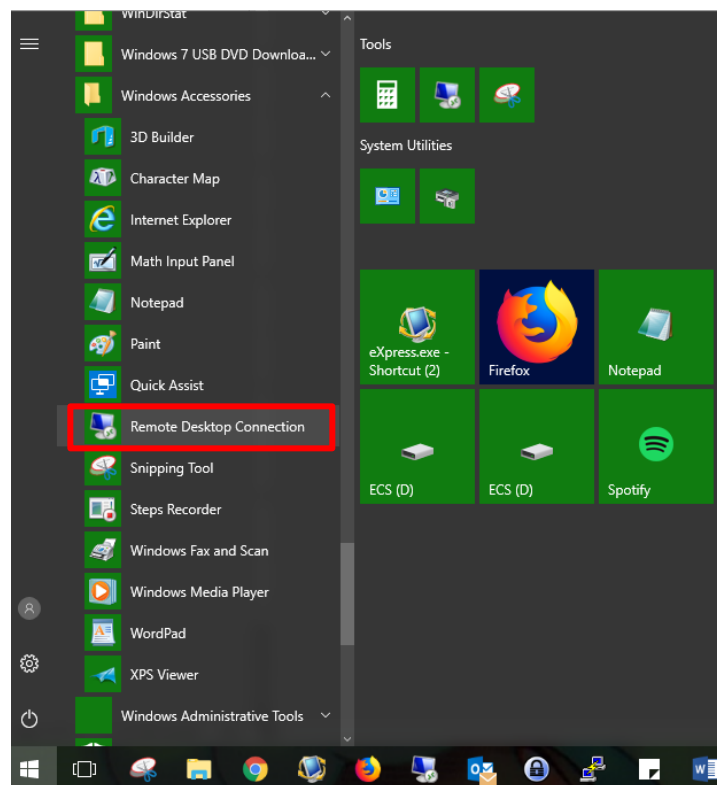


Figure 1: Remote Desktop Connection

2. Click on **Show Options** (Figure 2).

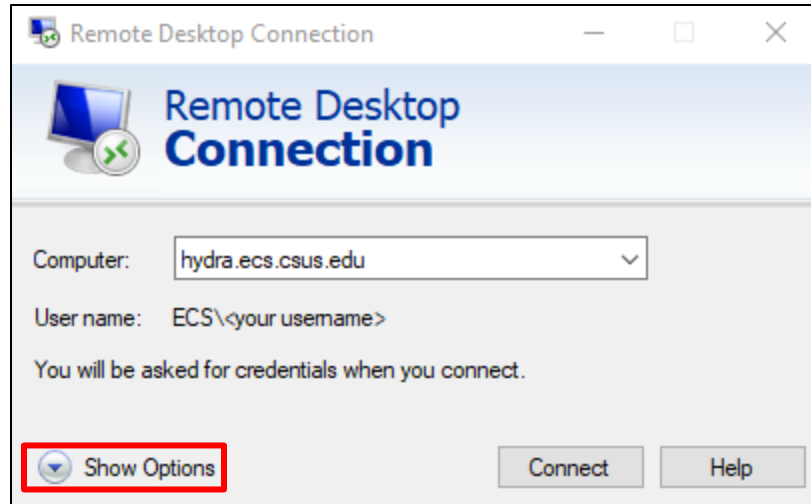


Figure 2: Show Options

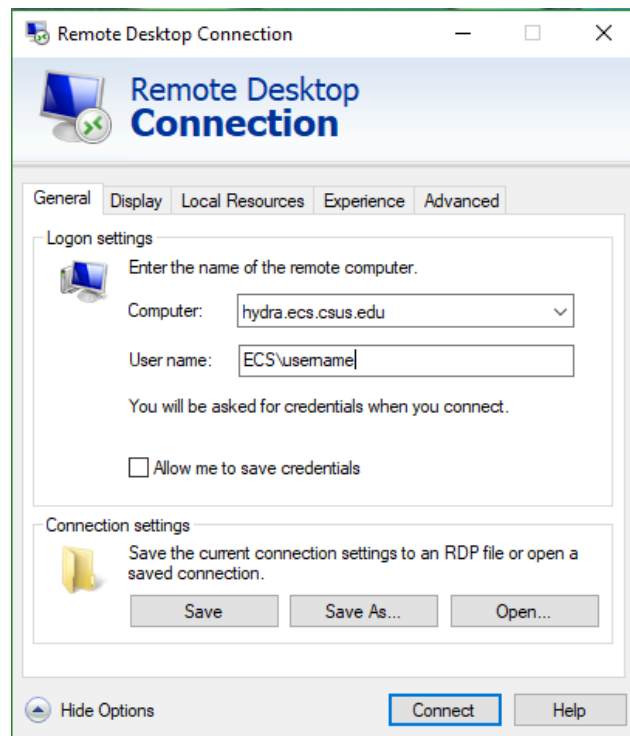


Figure 3: Options Menu

3. Enter your ECS username in the User name field in the format ECS\username (Figure 3).
4. Enter the Computer as hydra.ecs.csus.edu. Press Connect (Figure 3).
5. Enter your ECS password when prompted (Figure 4).

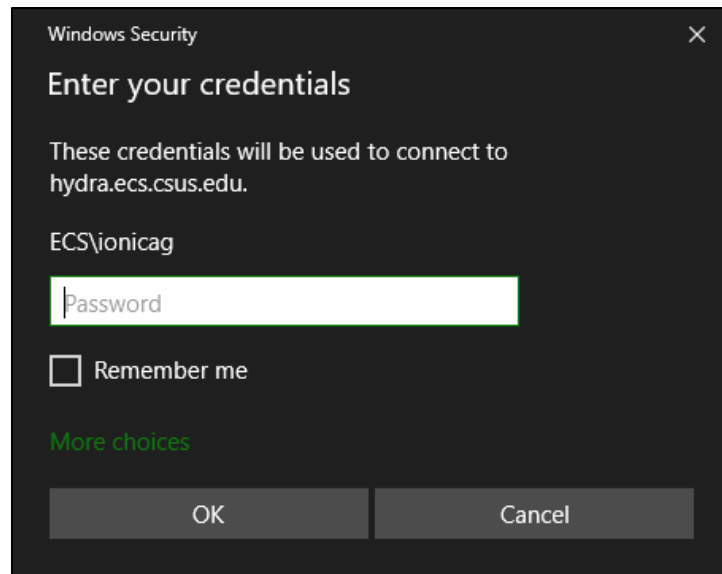


Figure 4: Password Field

2.2 Adding Local Devices and Resources on Windows

1. When in the options menu (Figure 5), click **Local Resources**.

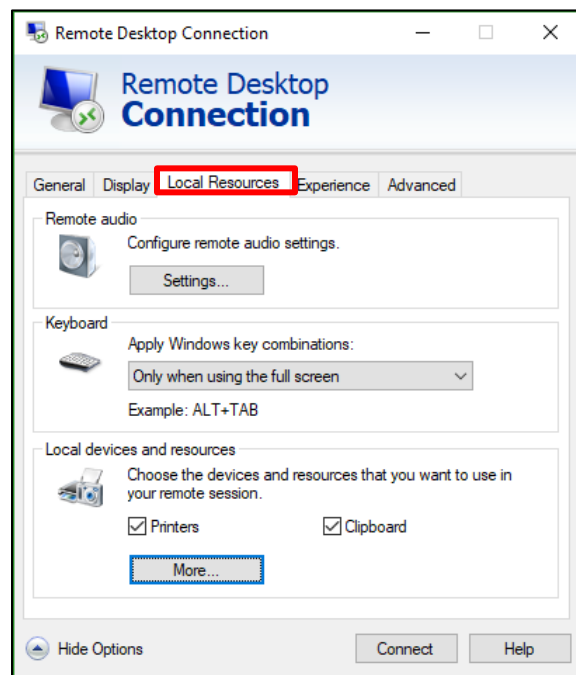


Figure 5: Local Resources

2. Click **More** (Figure 5) and click the **plus button** next to the category of device you want connected to the Remote Desktop. In this case, we'll use **Drives** (Figure 6).

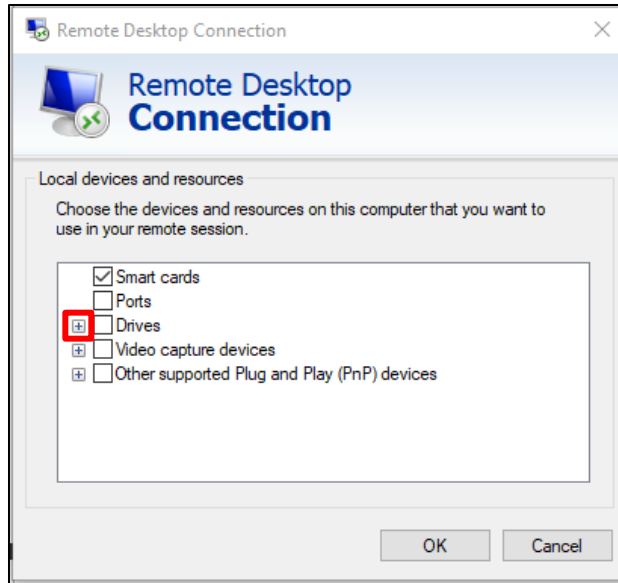


Figure 6: Plus Button

3. Check the box next to your desired drive to have them connected with the Remote Desktop (Figure 7).

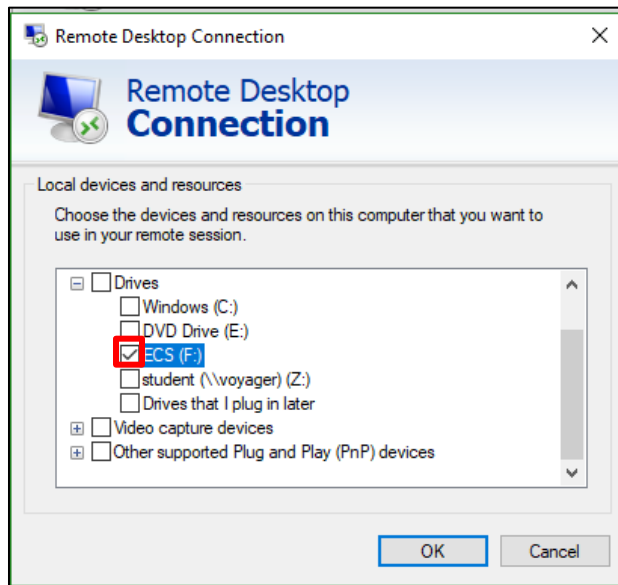


Figure 7: Checkbox

2.3 Changing Display Settings on Windows

1. When in the options menu (Figure 8), click **Display**.

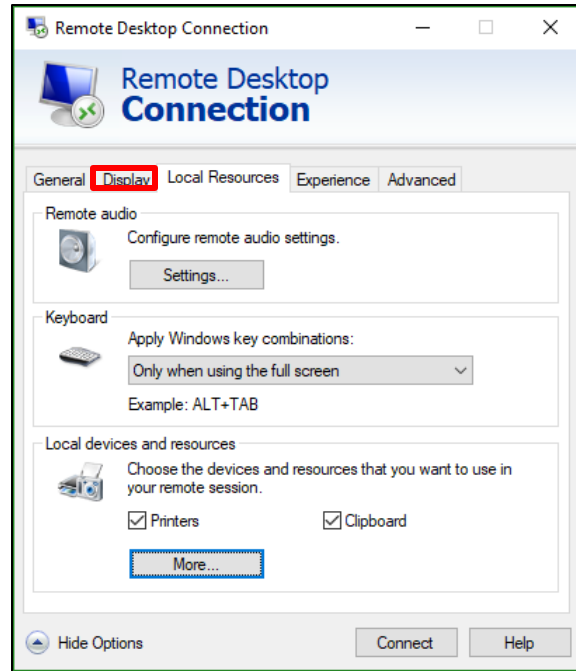


Figure 8: Display Settings Windows

2. Under **Display Configuration** you have the option to change the **Resolution** and **Colors**.
Colors: The colors generally should remain at **24 bit** under normal circumstances.
Resolution: Change the resolution as needed. If the connection is slow, try lowering the resolution (Figure 9).

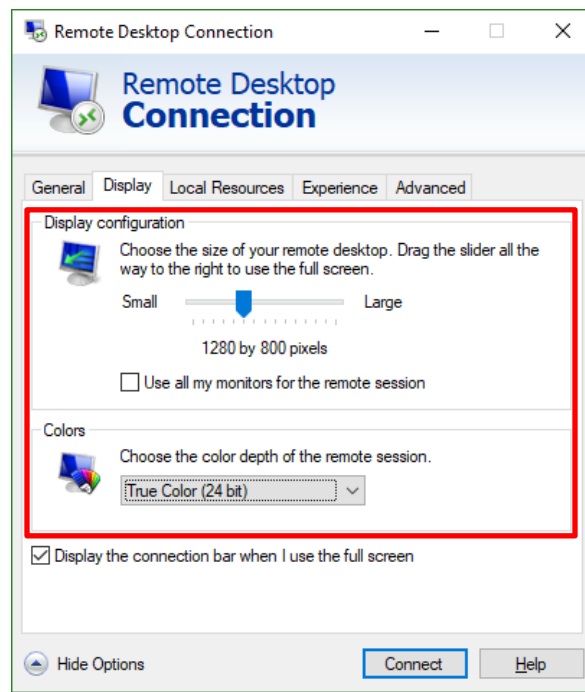


Figure 9: Display and Colors Windows

Note: Disconnect from Hydra when done using it by clicking on the **Start Menu** and clicking **Disconnect** (Figure 10). If not, you may be left in a disconnected state and you will be unable to log in again.

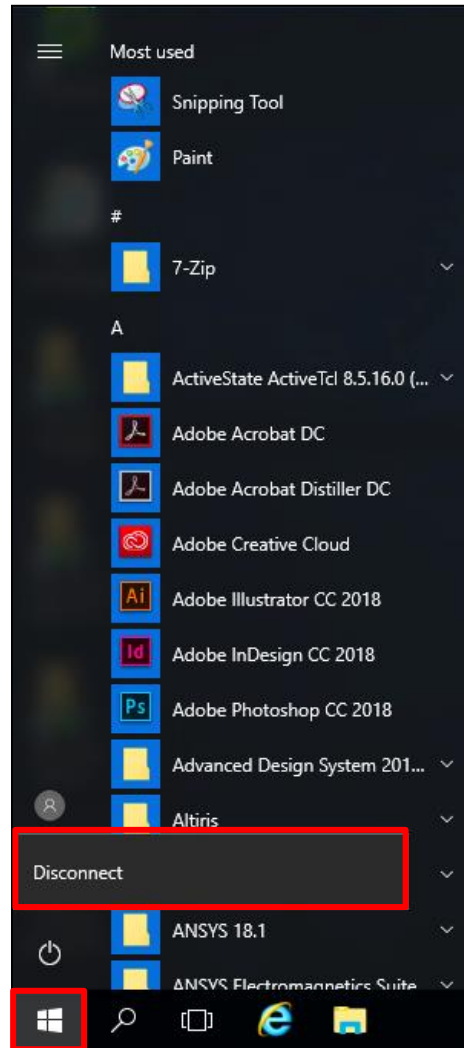


Figure 10: Disconnect

3 Connecting to Remote Desktop on Linux (Ubuntu)

3.1 Prerequisites

- Make sure you are connected to the internet!
- **NOTE:** As of October 16, 2019, connecting to Hydra outside of campus network will require SacVPN! To connect to SacVPN, you will need to use Global Protect. More

information can be found here: <https://www.csus.edu/college/engineering-computer-science/computing-services/internal/documents/globalprotect-vpn.pdf>

NOTE #2: You can use your preferred RDP client and Linux distribution. This document will be using Remmina on Ubuntu from <https://remmina.org/>.

1. Once in Remmina, click the + icon in the top left corner. (Figure 11).

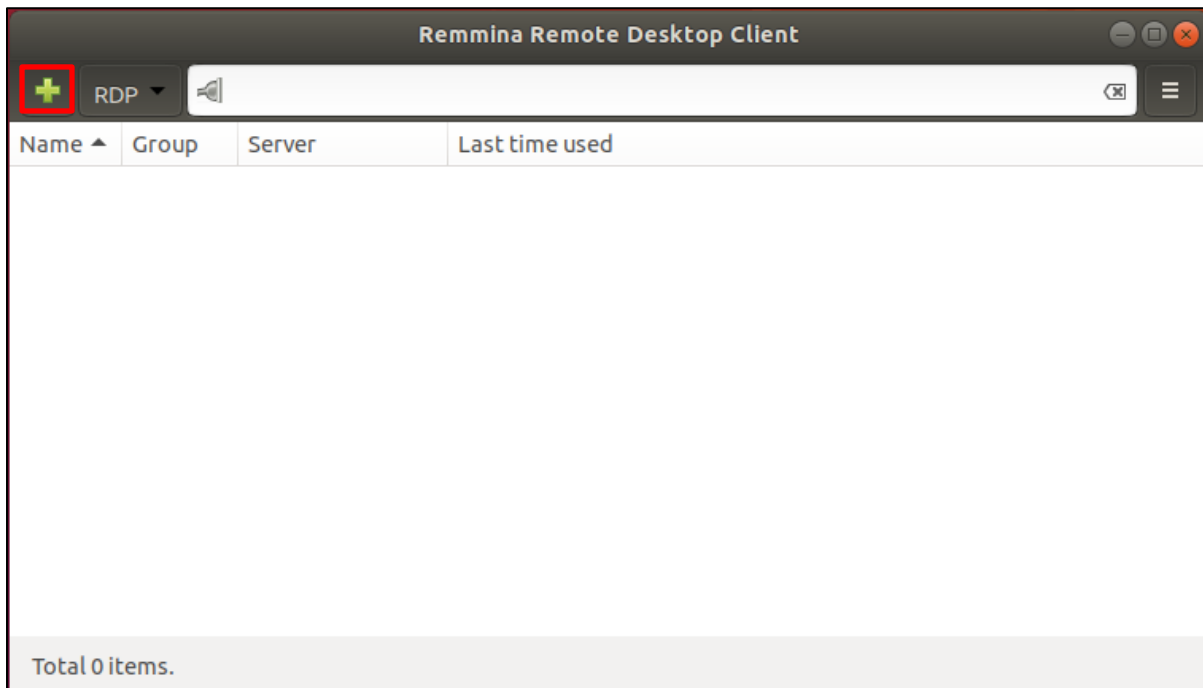


Figure 11: Terminal Server Client

2. Enter the following details and click **Save** (Figure 12):

Name: Hydra

Protocol: RDP – Remote Desktop Protocol

Server: hydra.ecs.csus.edu

Resolution: Client Resolution will use the host's screen resolution. You can also set a custom resolution by clicking the **Custom** radio button and using the drop-down menu next to it.

Color depth: This should stay at True color (24 bpp) under normal circumstances.

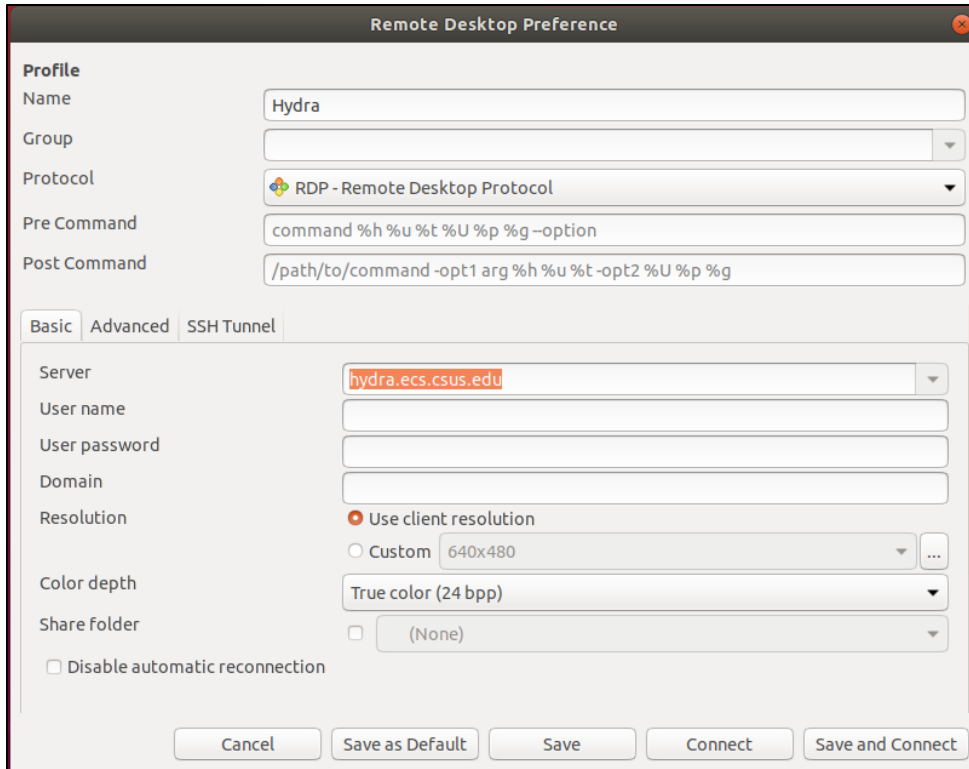


Figure 12: Connection Details

3. Double click on the newly created connection to connect to Hydra (Figure 13).

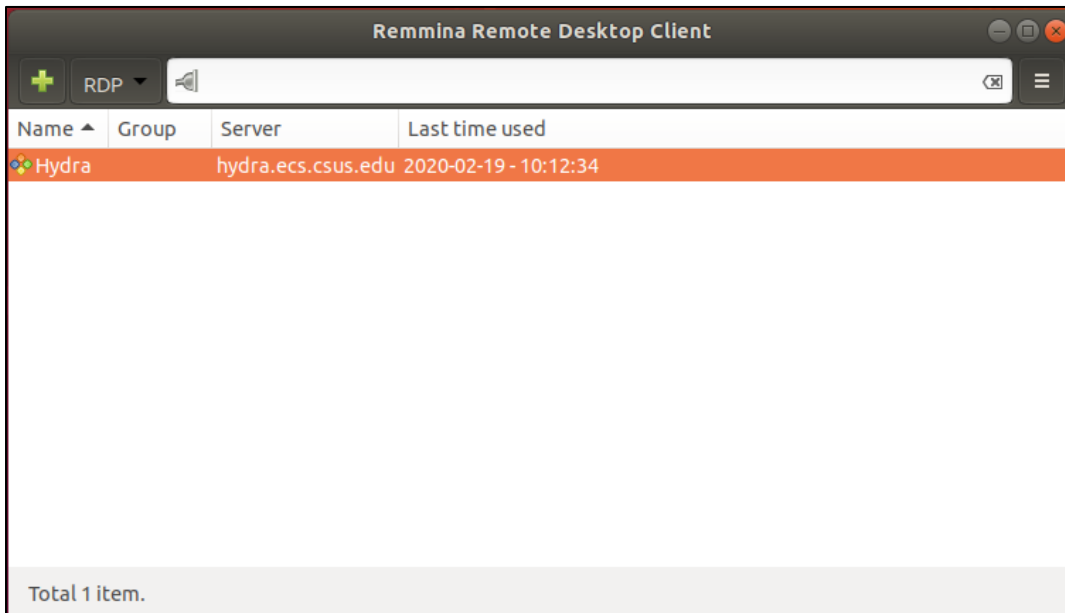


Figure 13: Connect

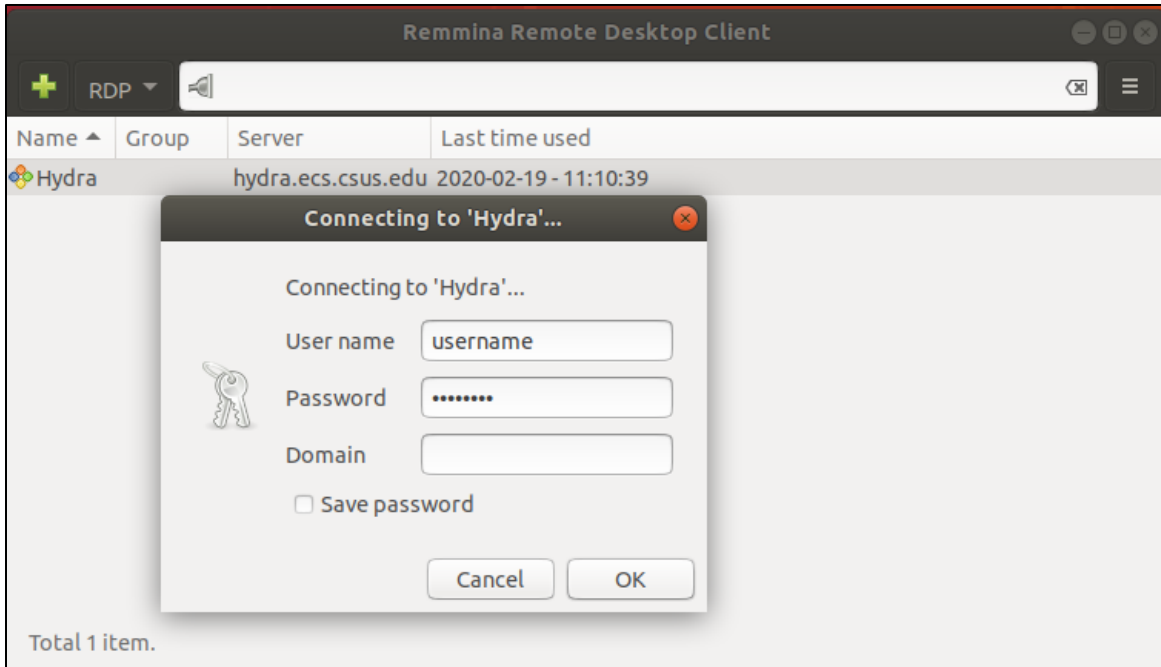


Figure 14: Edit Connection

4. When prompted, enter your ECS username and password. No ECS\ prefix is needed (Figure 14).

3.2 Adding Local Devices and Resources on Linux (Ubuntu)

When in the connection details window, click the checkbox next to **Share folder** and select the USB drive you want to bring into Hydra.

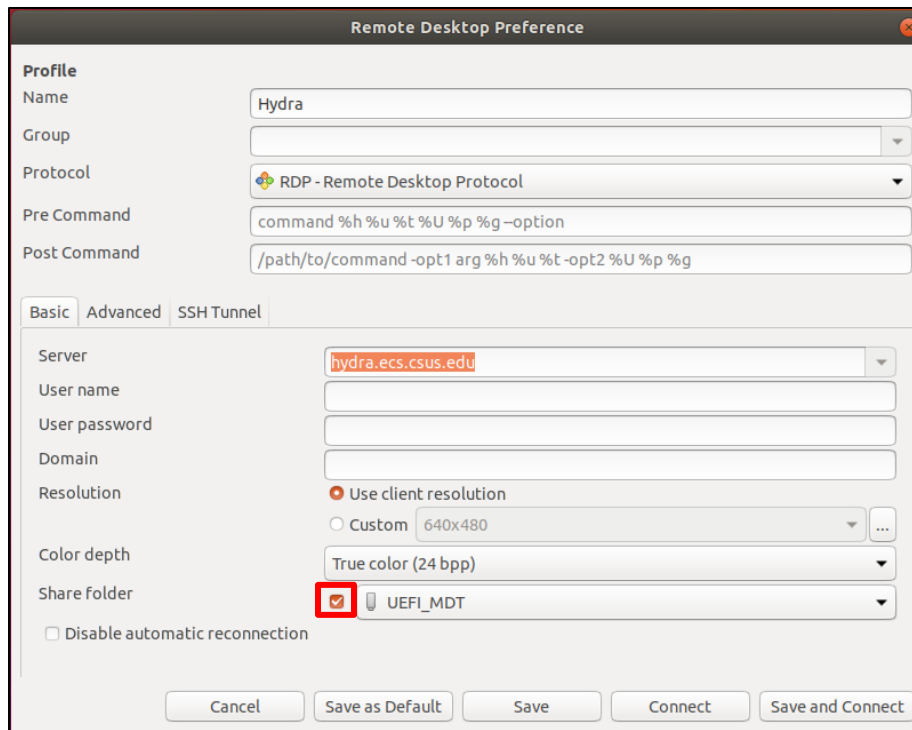


Figure 15: Share Folder

Note: Disconnect from Hydra when done using it by clicking on the **Start Menu** and clicking **Disconnect** (Figure 16). If not, you may be left in a disconnected state and you will be unable to log in again.

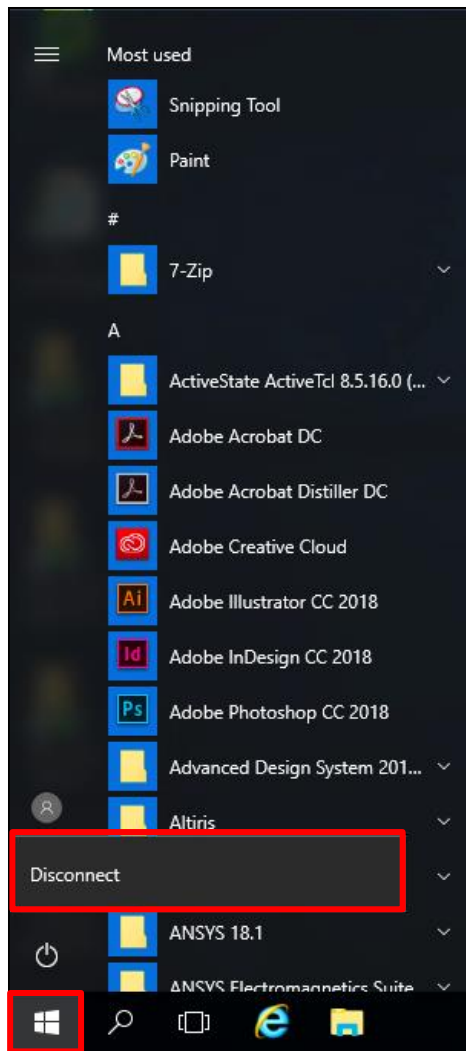


Figure 16: Disconnect

4 Connecting to Remote Desktop on Mac

4.1 Prerequisites

Connecting to Hydra off-campus requires connecting to the CSUS VPN! To connect to the VPN, you will need to install and configure the Global Protect VPN Client. You **must follow the instructions** below to connect to the VPN.

<https://www.csus.edu/college/engineering-computer-science/computing-services/internal/documents/globalprotect-vpn.pdf>

1. Open the **App Store** (Figure 17).



Figure 17: App Store

Type “**Microsoft Remote Desktop**” in the **Search Bar** (Figure 18) and press Enter.



Figure 18: App Store Search Bar

Click **Get** on the second icon, **Microsoft Remote Desktop 10** (Figure 19).

Note: If you already have the application installed, you will see **Open** or **Update** instead

of Get.

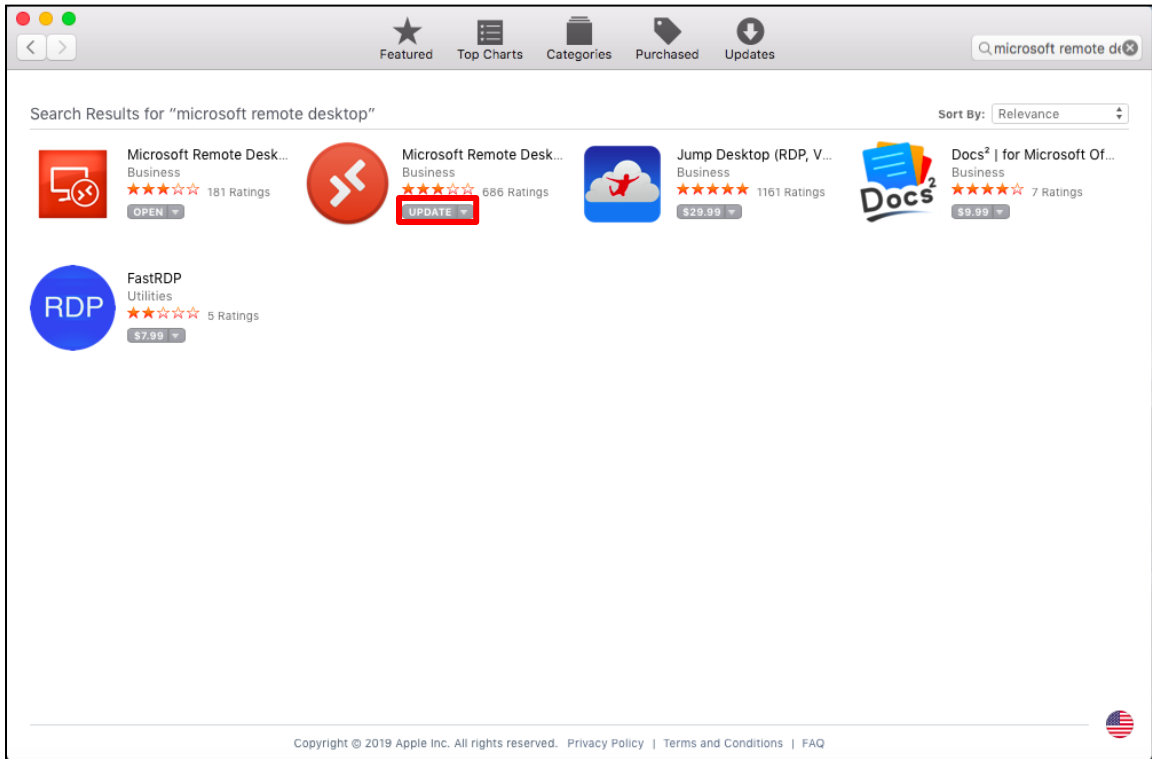


Figure 19: Microsoft Remote Desktop 10

3. Once the application is installed, click on the **Magnifying Glass** in the top right corner and search for **"Microsoft Remote Desktop."** Press Enter on the first result (Figure 20).

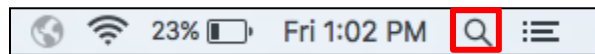


Figure 20: Magnifying Glass

4. After **Microsoft Remote Desktop** is open, click **Add Desktop** (Figure 21).

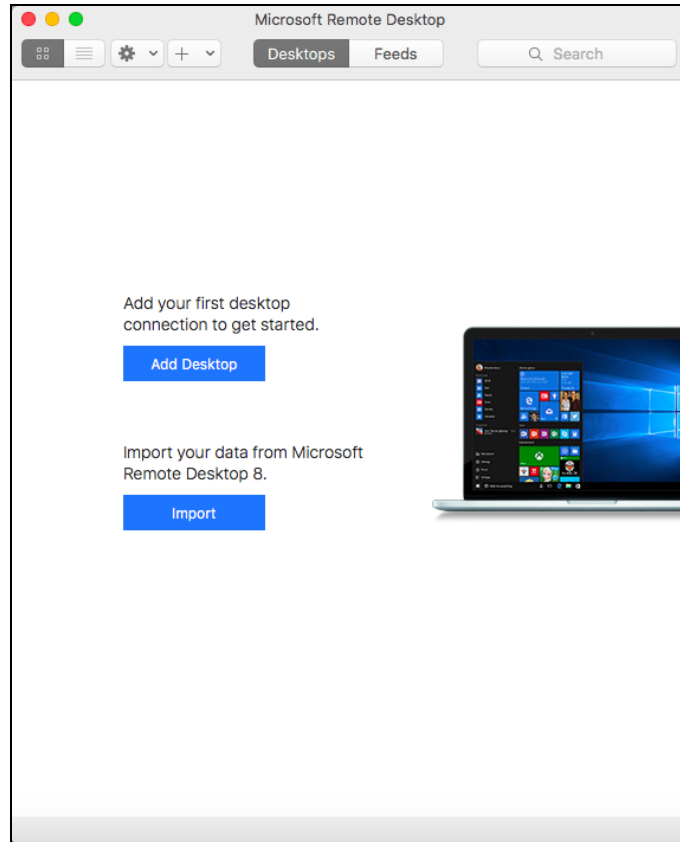


Figure 21: Add Desktop

5. Type **“hydra.ecs.csus.edu”** for **“PC name”** and **“Hydra”** for **Friendly Name**. Press **Add** (Figure 22).

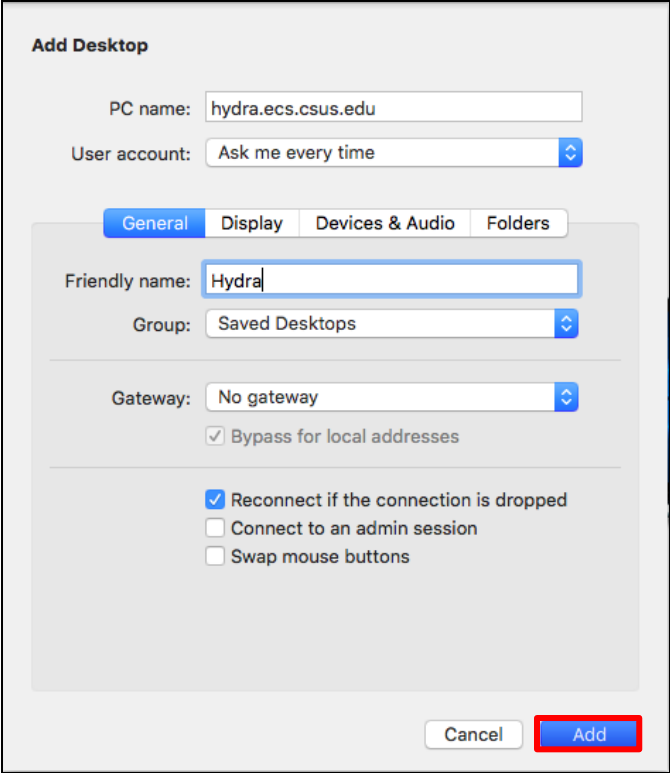


Figure 22: Add Desktop Info

6. Double click on the added **Hydra** desktop (Figure 23).

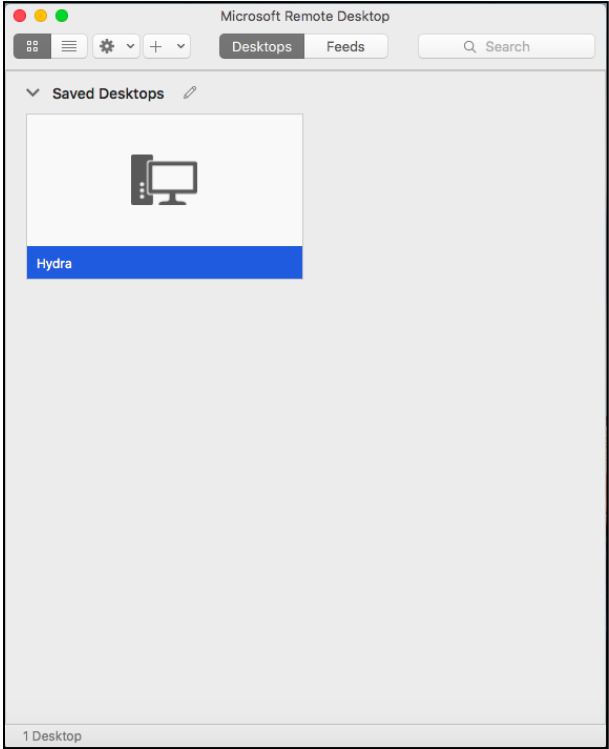


Figure 23: Added Hydra Desktop

7. Enter your **"ECS Credentials"** when prompted (Figure 24). Using "ECS\" is not necessary when logging in from a Mac.

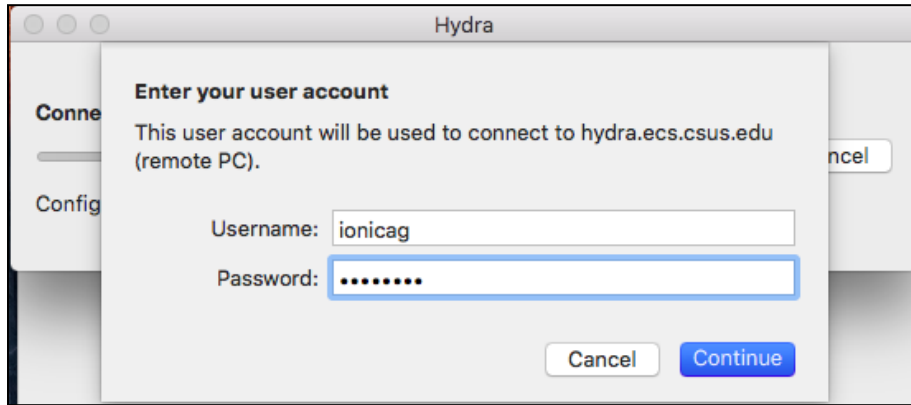


Figure 24: Enter ECS Credentials

4.2 Adding Local Devices and Resources on Mac

1. Click on the pencil icon to edit Hydra's settings (Figure 25).

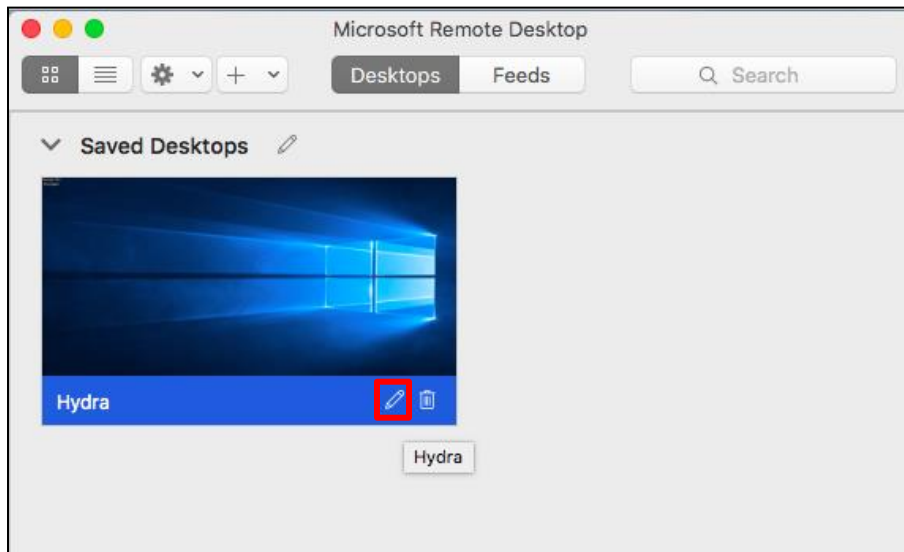


Figure 25: Pencil Icon

Click on the **Folders** tab and click the checkbox next to **Redirect Folders**. Click on the **Plus** icon (Figure 26).

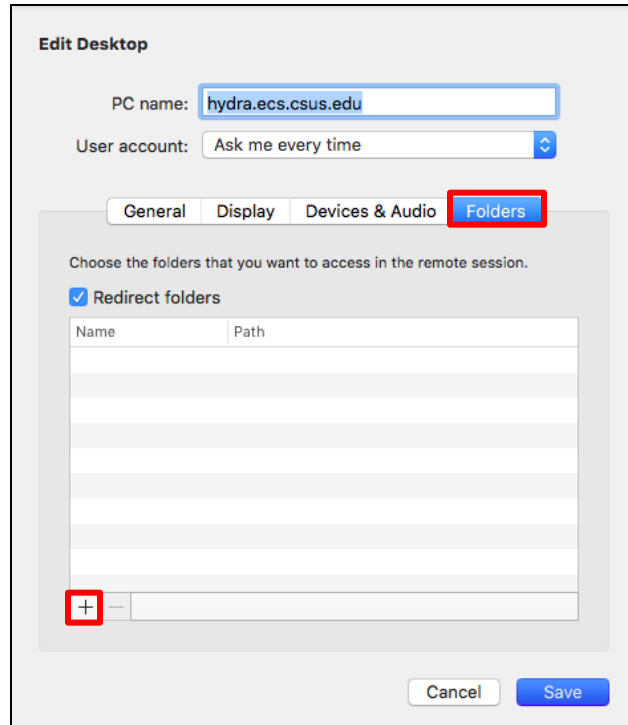


Figure 26: Folders Tab

3. Pick the folder or file you want to add and click **Open** (Figure 27).

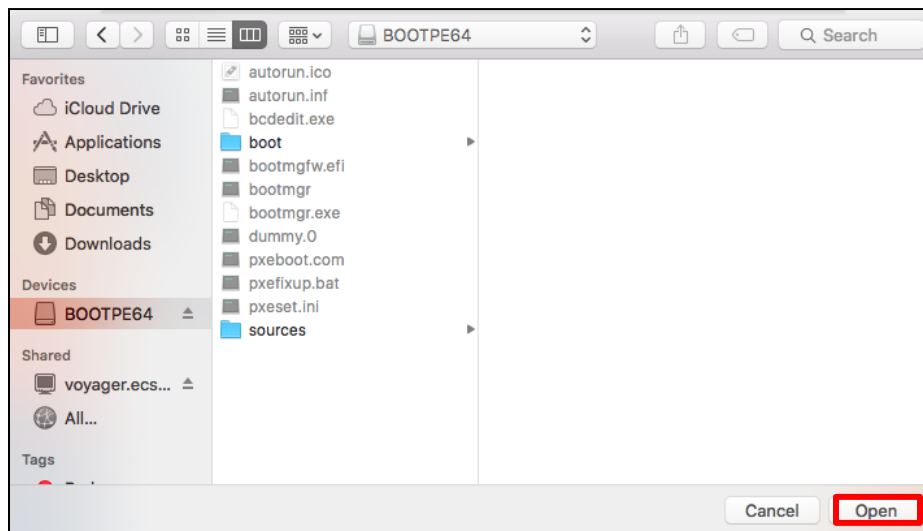


Figure 27: Pick a File and click Open

4. Click **Save** (Figure 28).

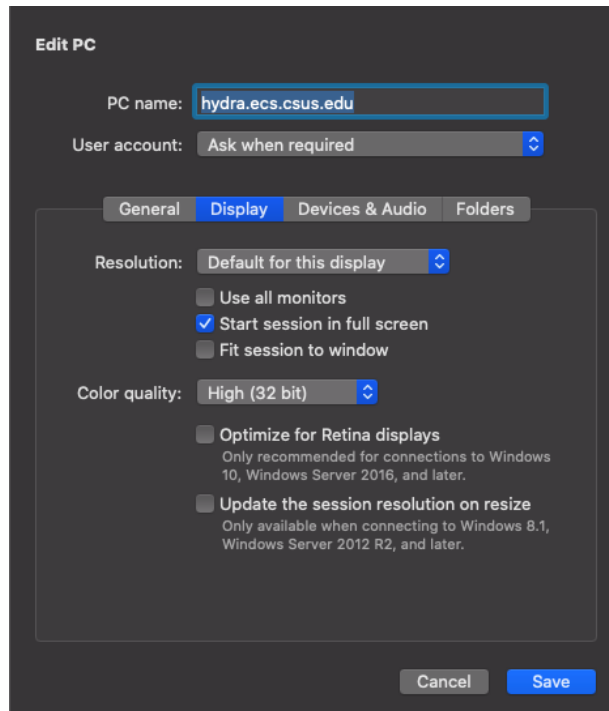


Figure 29: Display Settings Mac

Note: Disconnect from Hydra when done using it by clicking on the **Start Menu** and clicking **Disconnect** (Figure 30). If not, you may be left in a disconnected state and you will be unable to log in again.

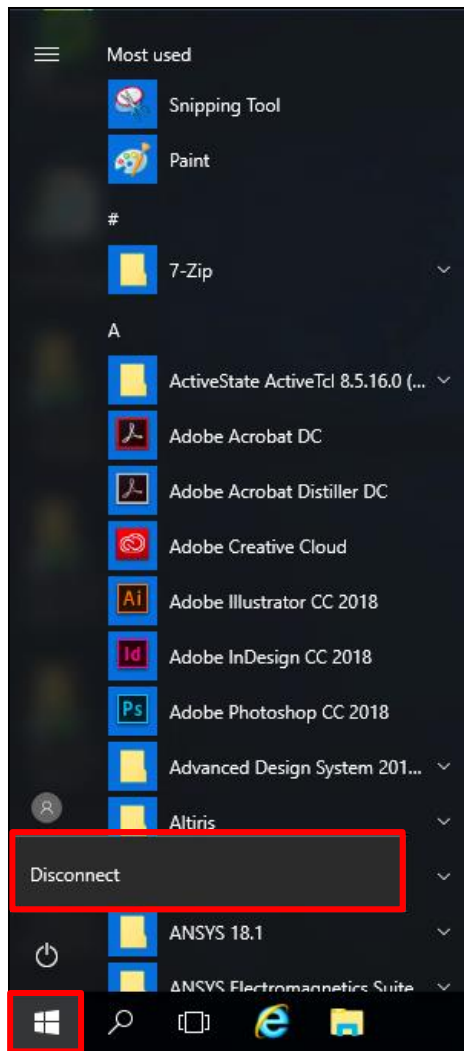


Figure 30: Disconnect

Revision History

Version No.	Author	Date	Revision Comments	Reviewer
0.1	Wayne Dias	04/16/2008	Initial Version	
0.2	Ashley Gregory	03/04/2014	Review and Edit	
1.0	Gabriel Ionica	10/18/2018	Major Revision and Edit	
1.1	Michael Khoo	10/29/2019	Minor Revision	
1.2	Gabriel Ionica	2/7/2020	Added USB, Display settings and Mac section Name change	
1.3	Gabriel Ionica	2/19/2020	Revised Linux section	
1.4	Gabriel Ionica	3/6/2020	Resolved comments	
1.5	Gabriel Ionica	3/26/2020	Added prerequisites to each subsection and switched documentation link to ours	

Table 1: Revision history