



HydroGEN: High-Temperature Electrolysis Supernode

G. S. Groenewold, D. Ding, R.D. Boardman

Presenter: Gary Groenewold, INL

Date: 5/13/2020

Venue: 2020 DOE Annual Merit Review

Project ID # P148B

This presentation does not contain any proprietary, confidential, or otherwise restricted information.

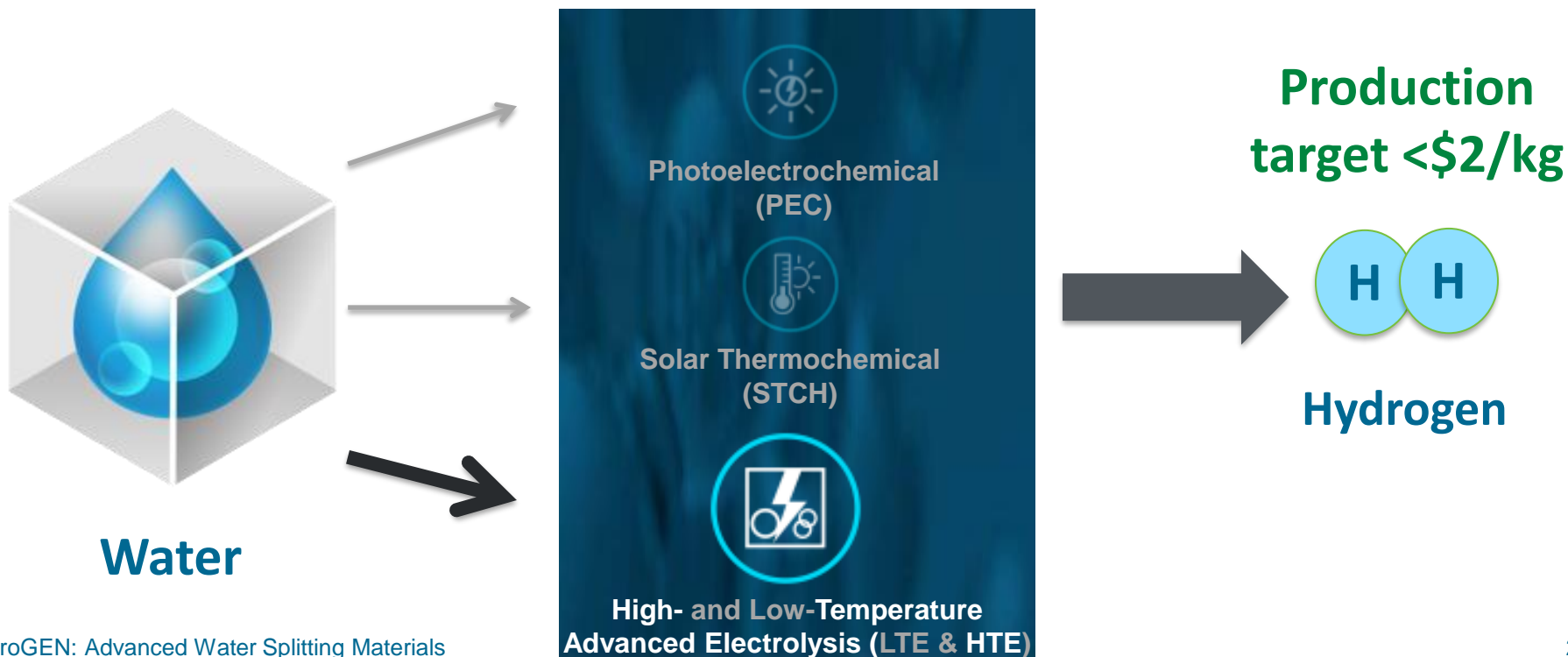


Advanced Water-Splitting Materials (AWSM) Relevance, Overall Objective, and Impact

AWSM Consortium 6 Core Labs:



Accelerating R&D of innovative materials critical to advanced water splitting technologies for clean, sustainable & low cost H₂ production, including:





Approach: HTE Projects & Collaboration

- Efficiency
- Yield
- **Cost**
- Durability
- Manufacturability

HTE Node Labs



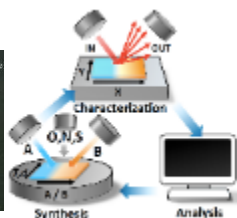
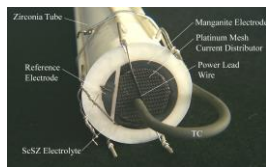
Supernode

Support through:



- Personnel
- Equipment
- Expertise
- Capability
- Materials
- Data

HTE Projects





Accomplishments and Progress: Established Nodes for Project Support

Nodes for HTE

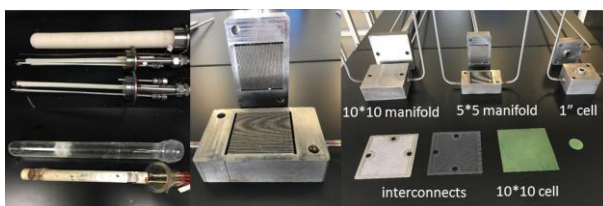
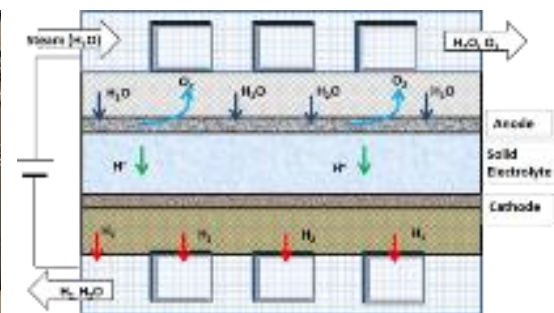
- 9 @ readiness level 1
- 22 @ readiness level 2
- 9 @ readiness level 3



Node Classification

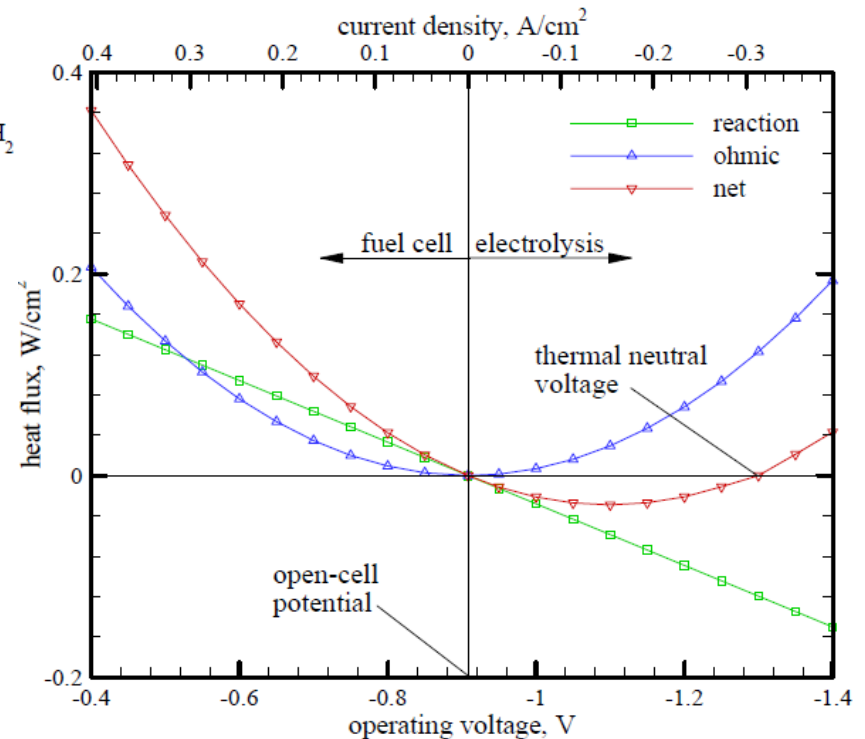
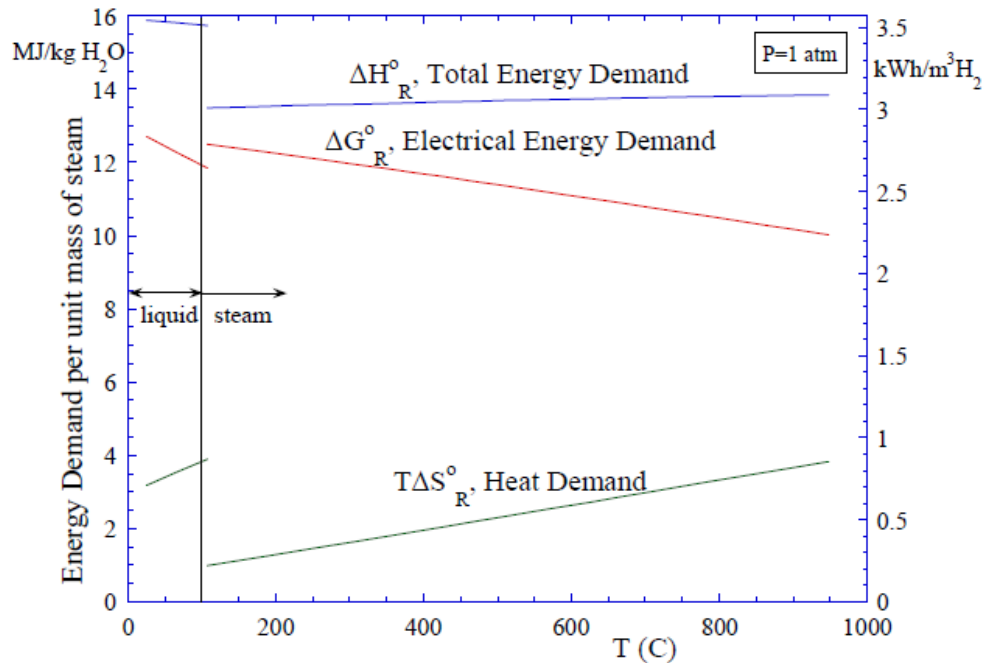
- 6x Analysis
- 6x Benchmarking
- 20x Characterization
- 13x Computation
- 6x Material Synthesis
- 5x Process and Manufacturing Scale-Up
- 5x System Integration

**10 nodes used by
current HTE projects**





Overview: Advantages/Disadvantages of HTE



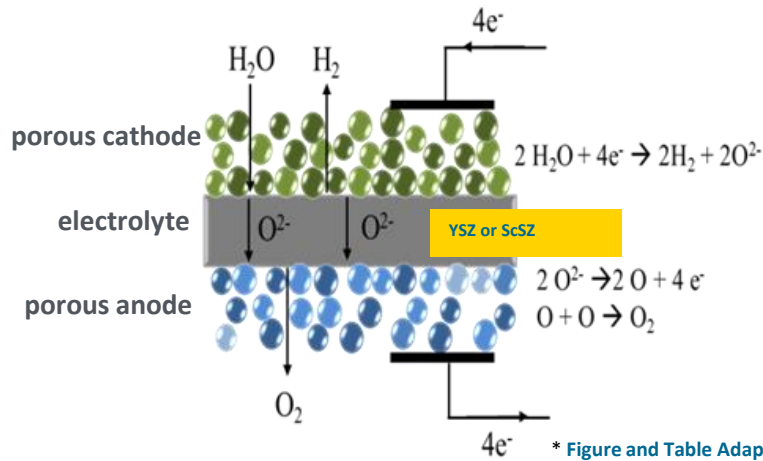
- 30-50% higher thermodynamic efficiency is possible for steam compared to water splitting (combined free energy and electricity use)
- Reversible operation is possible with optimal design of cells, stacks and modules
- Does not require highly precious metals
- Concerns: cell degradation, *viz.*, sintering, pore consolidation, Cr migration / poisoning, catalyst deactivation (Ni hydridation), delamination



Overview – HTE Technology, o-SOEC, p-SOEC

Oxygen Ion Transport Solid-Oxide Electrolysis*

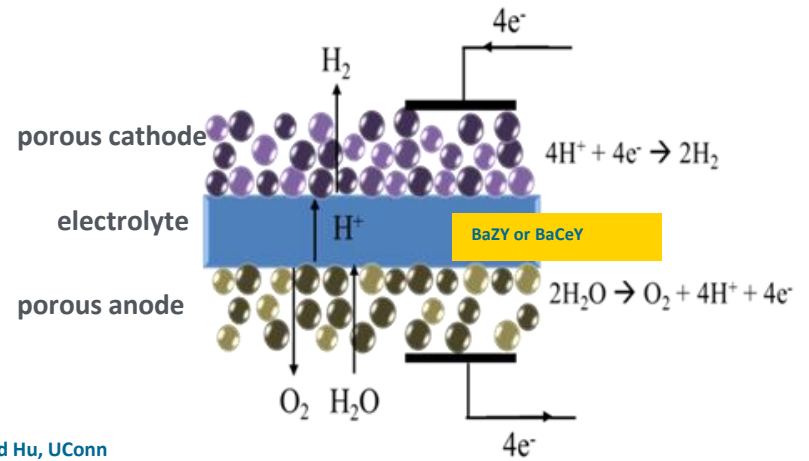
(O²⁻-SOEC; Unresolved R&D Material Barriers Remain)



* Figure and Table Adapted from: Singh and Hu, UConn

Proton-Conducting Solid-Oxide Electrolysis*

(H⁺-SOEC; Early-Stage Research Needed)



O ²⁻ - SOEC	Attributes	H ⁺ - SOEC
650-850°C	Operating Temperature	550-750°C
0.015 S.cm ⁻¹ at 850°C	Electrolyte Conductivity	0.01 S.cm ⁻¹ at 650°C
H ₂ O + H ₂	Cathode Products	Pure H ₂
H ₂ O + O ₂	Anode Products	O ₂ + sweep gas
durability decreases: microstructure evolution, Δ stresses, Cr migration	Challenges	slower kinetics, maturation of electrolyte (synthesis, densification, H ⁺ conduction)

HTE Supernode is focused on attacking o-SOEC issues: elemental migration, unexpected phase formation, crack and void formation, and delamination



HTE Supernode Challenges, Composition, Timeframe, and Funding

Challenges

Durability of o-SOECs

- elemental migration
- new phase formation
- void formation
- delamination and cracking

Performance of p-SOECs

- kinetics, conductivity
- maturation of the electrolyte

Composition

- INL – materials R&D, precision cell fab, electrochemical characterization
- NREL – custom materials fabrication, synchrotron characterization at SLAC
- Sandia – microscopy, materials analysis
- LLNL – multiscale modeling
- LBNL – synchrotron characterization

Timeline

- Project start date: 2019
- Project end date: BP1 ending Sept., 2020

Budget

- FY20 DOE Funding: \$240K
- FY20 DOE Funding: \$125K
- Total DOE Funds Received to Date: \$365K



HydroGEN HTE Supernode: Five Labs, Coordinated Research Capabilities

- Coordinated R&D effort addressing o-SOEC, p-SOEC science

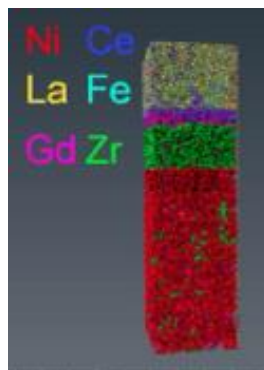
- **INL**

- Materials R&D
- Cell Fabrication and Testing
- Intensive Seedling Support



- **Sandia**

- Materials micro-milling (FIB)
- Microscopy & elemental mapping



- **NREL**

- Custom cell design & fab
- SLAC interface for Micro XRD, XAS, XTM

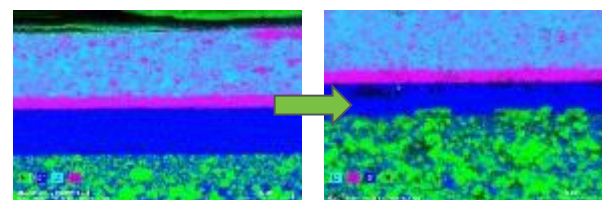
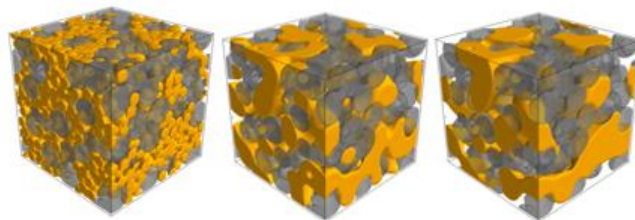


- **LLNL**

- Multi-scale computational modeling
- Ab initio → phase field → continuum electrochem (NWU)

- **LBL - ALS**

- Micro diffraction
- Tomography



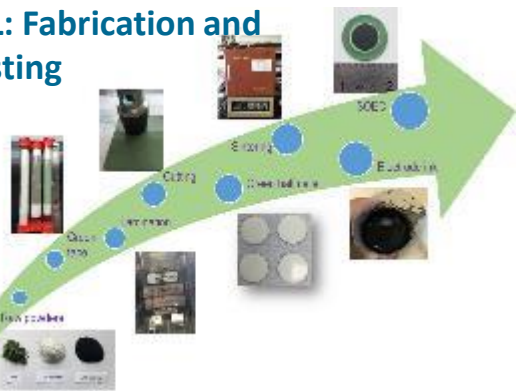
pre-operation

post-operation
750° C



HTE Supernode Objectives – o-SOEC technology

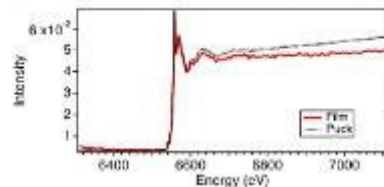
INL: Fabrication and Testing



SNL: Imaging

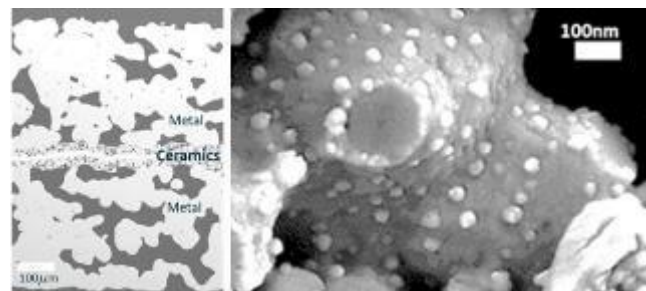


NREL: Surface & Interface

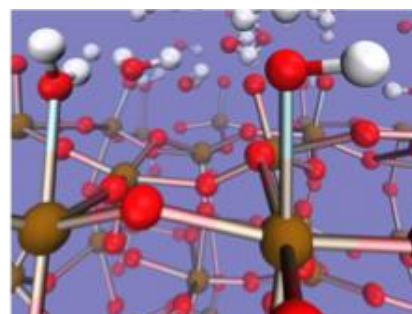


- higher efficiency, improved durability
- rationalize & predict degradation
- manipulate composition to optimize durability
- accelerate rate of technology development
- **achieve \$2/kg target for H₂ production of**

LBL: Processing & Operando



LLNL: Modeling

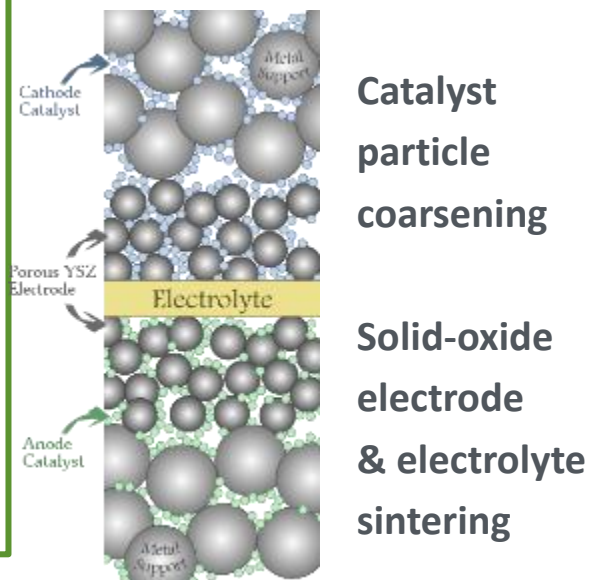




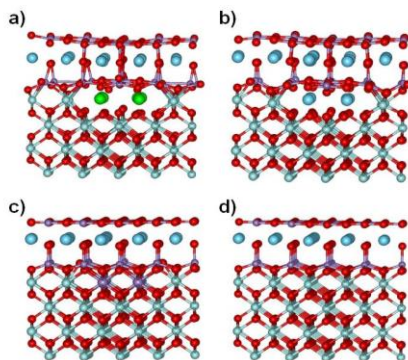
HTE Supernode Challenges: Characterization of Solid Oxide Electrode Microstructure Evolution

Challenges:

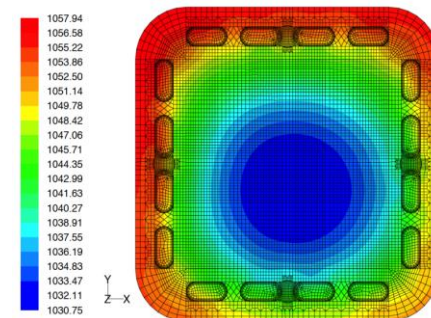
- Market acceptance of hydrogen production using high temperature electrolysis (HTE) relies on cost reduction and durable operation.
- Degradation mechanisms in oxygen-ion conducting solid oxide electrolysis cells (o-SOEC) remain elusive
 - correlation of electrode microstructure evolution to degradation under realistic operation conditions → not well understood



Electrical currents and ion forces lead to inter-crystalline structure forces



High temperatures and thermal gradients cause non-uniform grain boundary stresses





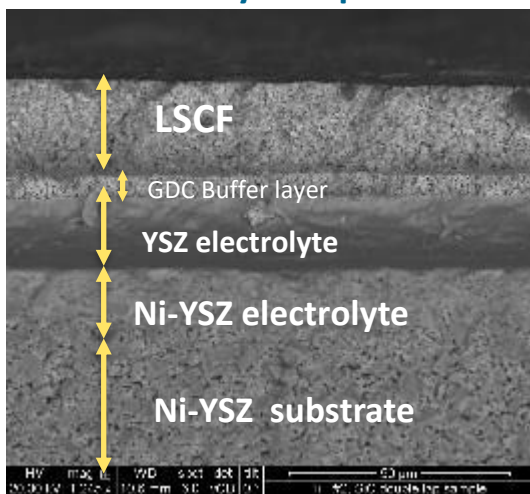
HTE Supernode Contributions: INL -- Advanced Materials for Elevated Temperature Water Electrolysis

- Capability

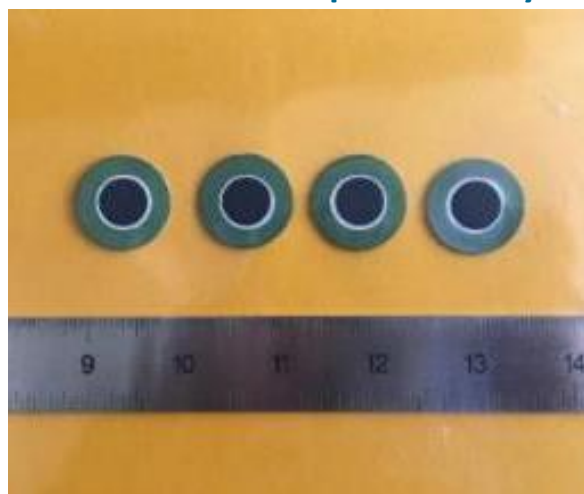
- Hydrogen Lab: 30 yr. legacy of SOEC development and engineering
 - Button cell & stack testing
- o-SOEC material research, cell fabrication
 - “button-to-large”: high temp roll-to-roll, solid oxide additive manufacturing for varied cell components, configurations, electrodes
- Electrochemical, high-throughput materials testing

- Accomplishments

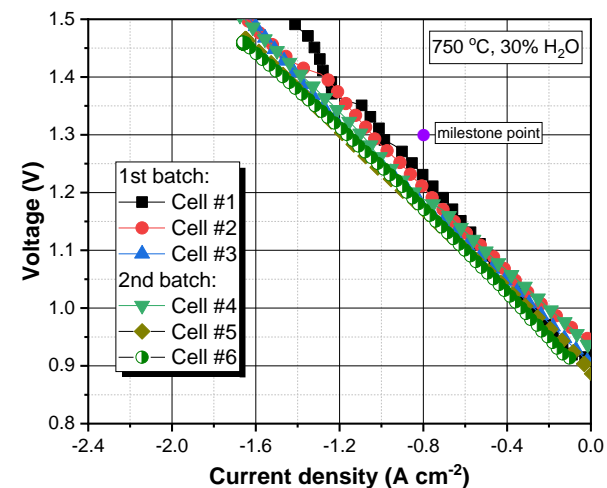
controlled layer deposition



button cell fab reproducibility



o-SOEC performance consistency





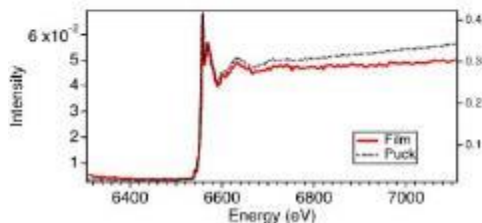
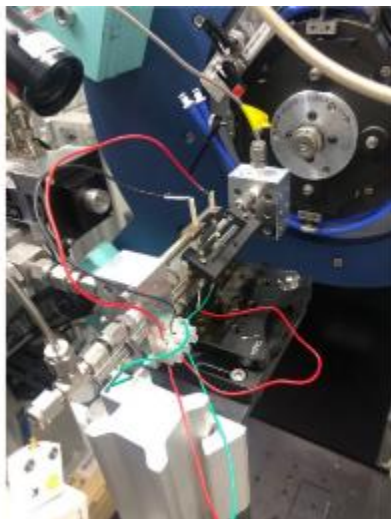
HTE Supernode Contributions: NREL -- Controlled Materials Synthesis and Defect Engineering

• Capability

- Custom materials fabrication, targeted synthesis of representative interfaces
- Advanced synchrotron analyses collaborating with SLAC -- ultimate goal is to use synchrotron beam-line spectroscopy (transmission or reflection mode) to resolve high temperature solid-oxide 3-D microstructure to depths of 20-50 μm .
- Analyze representative HTE cell layers & interfaces with high precision at SLAC
- Post-mortem analysis of HTE cells
 - Development of secondary phases (XRD)
 - Interdiffusion of elements (XRD, XAS, XRF)
 - Formation of voids (Tomography - TXM)

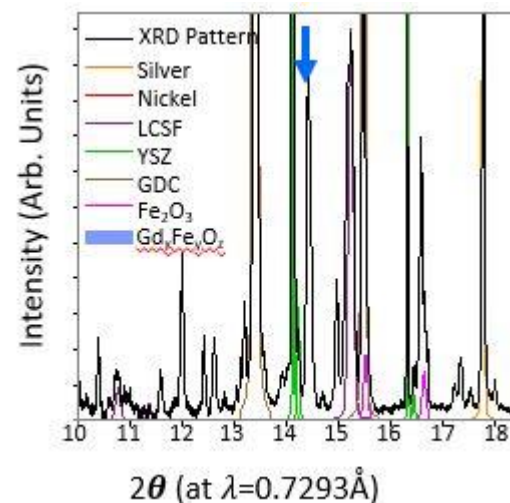
• Accomplishments

Design & fab operando stages for beam line experiments



XAS measurements

GdFeO_x phase identification with micro focused XRD





HTE Supernode Contributions: : Sandia – 2D and 3D Chemical and Morphological Characterization

• Capability

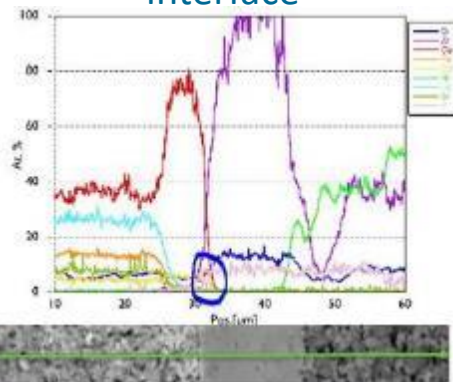
- Focused ion beam sample milling
 - micro milling for vertical profiling
- Advanced Electron Microscopy: scanning, transmission
 - high detail morphology
- Electron Backscatter Diffraction
- Energy Dispersive X-ray spectroscopy for High resolution elemental mapping (EDS)

• Accomplishments

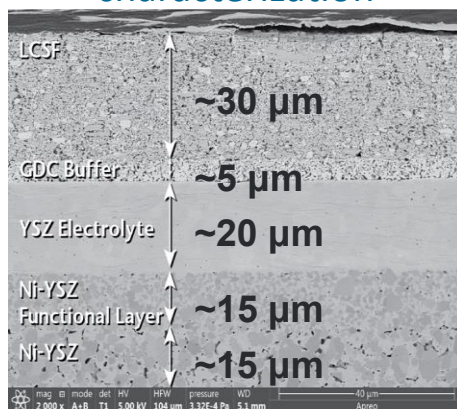


Sandia
FIB/SEM/
EDS/EBSD

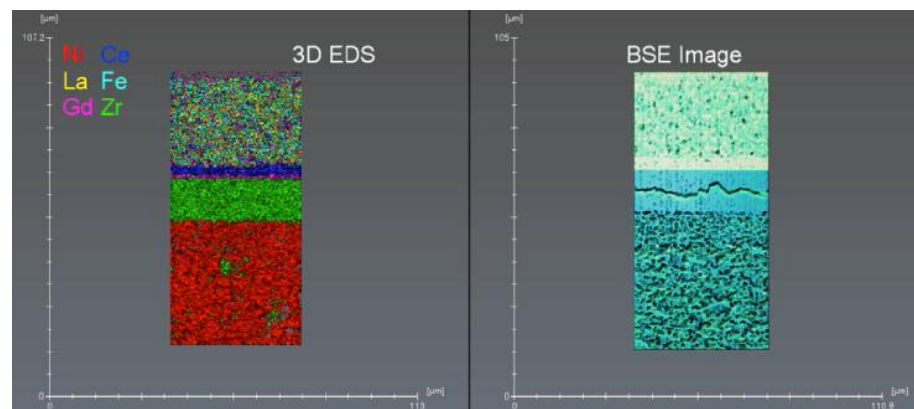
Gd migration to interface



morphology characterization



elemental mapping using EDS, and morphology using backscattered electrons – revealing a YSZ crack





HTE Supernode Contributions: : LBNL – Processing & Operando Node

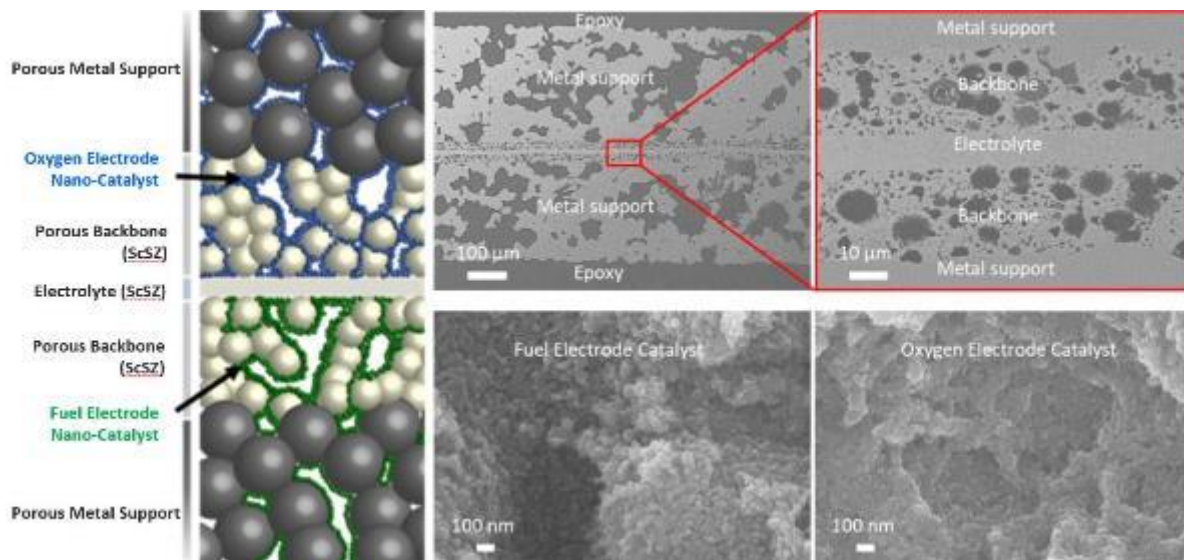
- Capability

- Metal-Supported SOEC materials fabrication: significantly less expensive than ceramics, single high sintering step, mechanically strong, welded connections, fast temperature control, intermittent fuel/H₂ fuel tolerant
- Characterization at ALS: tomography, non-ambient diffraction, microdiffraction

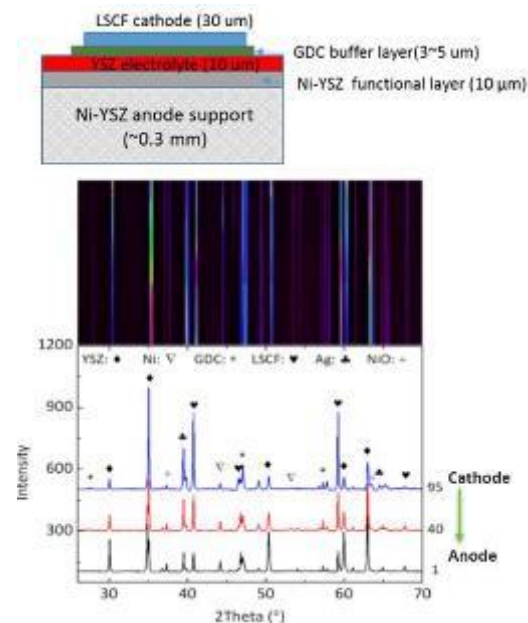


- Accomplishments

High-detail imaging enabling layer differentiation



Micro-XRD with layer-specific differentiation





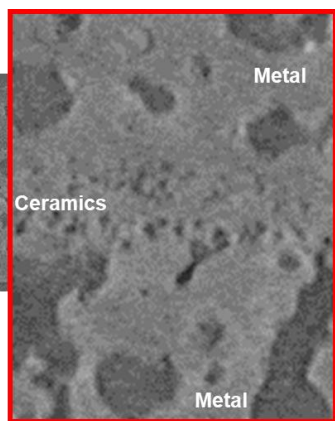
HTE Supernode Contributions: : LBNL – Processing & Operando Node

• Capability

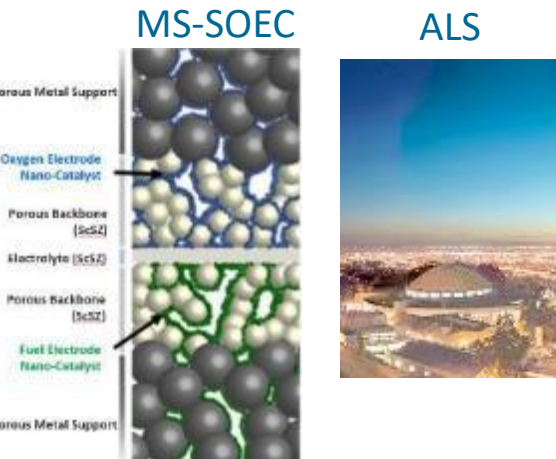
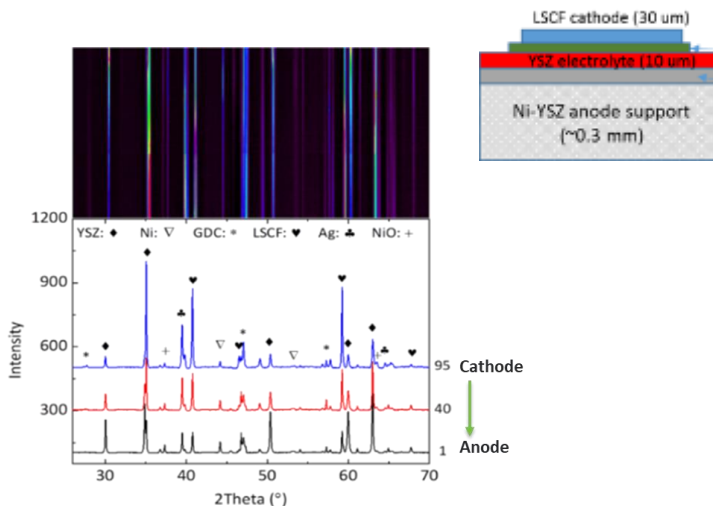
- Metal-Supported SOEC materials fabrication: significantly less expensive than ceramics, single high sintering step, mechanically strong, welded connections, fast temperature control, intermittent steam/H₂ fuel tolerant
- Characterization at ALS: tomography, non-ambient diffraction, microdiffraction

• Accomplishments

Tomography Imaging

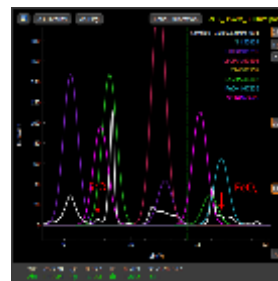
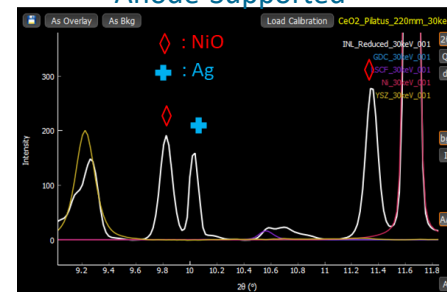


Micro-XRD with layer-specific differentiation



Transmission XRD Detects All Layers in Full Cell

Anode-Supported



Metal-Supported



HTE Supernode Summary: Advances in Understanding o-SOEC Durability, Degradation

- Major inroads into understanding o-SOEC durability were gained through the first half of FY 2020 by the HTE Supernode
- Excellent progress in identifying phenomena that characterize failure of o-SOECs
 - Consistent, reproducible button cell platform for evaluating o-SOEC performance
 - Microscopy, elemental mapping for investigating morphology alterations and elemental migration in cell materials post-mortem
 - X-ray identification of unmodified- and new phases, and experimental strategies for higher resolution, layer specific cell interrogation of cells
 - Multiscale modeling for unraveling mechanism, key controlling factors
- Result → increased cell durability,
while maintaining or improving efficiency
 - Operating strategies for current o-SOECs to increase longevity
 - Compositional options for reducing elemental migration
 - Fabrication guidance to mitigate unwanted phase formation



HTE Supernode: Future Work in o-SOEC Development, p-SOEC Evolution

- Supernode: poised to conduct the second round of experimental and theoretical studies, guided by initial results
- Capitalize on initial synchrotron X-ray, microscopy studies
 - tomographic studies using synchrotron beamline
 - stoichiometry, oxidation state using micro-XAS coupled XRF:
 - Fe segregation, localization, and secondary $Gd_xFe_yO_z$ phase formation
 - defect and void formation: Nano-TXM (30 nm resolution)
 - Initiate In-operando testing of cells & model systems: XRD, XAS, and TXM
- Model systems to isolate degradation mechanisms
 - identify and track elemental diffusion and redox in cell
 - role of sintering-aids
- Enhanced multi-scale modeling to predict migration, phase alteration, and material failure
 - thermodynamic viability using adapted DFT approaches
- Initiate p-SOEC research
 - initiate studies to identify mechanisms of electrical leakage
 - conduct durability testing to establish viability as a lower temperature alternative



HydroGEN HTE Supernode Approach: Close Interactions with Industrial, Academic Partners

- **Approach**

- Strong communication with seedling partners collaborating with the Advanced Electrode and Solid Electrolyte Materials node at INL
 - A gateway for leveraging the microscopy, accelerator characterization and multiscale modeling capability at NREL/SLAC, Sandia, Berkeley, and Livermore



- **Goal**

- Accelerate research, development, and deployment of advanced water splitting technologies for clean, sustainable hydrogen production

- **Technical Objectives**

- Improve cell fabrication process steps, manufacturing, & cell supports
- Improve cell performance, optimize operations parameters
- Elucidate, eliminate, or mitigate mechanisms of degradation



Supernode connection with HTE Seedling Projects

High-level strategy: take results and approach from the HTE Supernode, apply to technology development conducted in the seedling projects

The seedlings encounter issues related to the Supernode research, only at a higher TRL

- o-SOEC development
 - **Northwestern University**: Optimize cell fabrication, testing
 - **Saint Gobain**: Thermal & chemical expansion measurement
 - **University of South Carolina**: Oxygen evolution in symmetrical, and in planar cells
 - **Nexceris**: Coupon interconnect evaluation, extending to reduced temperature evaluation in p-SOECs in BP2
- p-SOEC development
 - **UTRC**: Experimental full cell testing, focused on Faradaic efficiency measurements, and data acquisition
 - **University of Connecticut**: Cell fabrication and testing, education and training
 - **Redox**: Electrolyte stability and new compositions
 - **West Virginia University**: Electronic leakage investigations (conductivity measurement), correlated with defect chemistry and fundamental calculations



Collaboration: HydroGEN HTE Node Utilization

Lab	Node	Node PI	Nex-ceris	NWU	Redox	Saint Gobain	UConn	USC	UTRC	WVU	Super-Node
INL	Analysis and Characterization of Hydrided Material Performance	Gabriel Ilevbare, Michael Glazoff	✓								
INL	Advanced Materials for Elevated Temperature Water Electrolysis	Ding, Dong	✓	✓	✓	✓	✓	✓	✓	✓	✓
SNL	Advanced Electron Microscopy	Sugar, Josh									✓
NREL	Controlled Materials Synthesis and Defect Engineering	Ginley, David Parilla, Philip Bell, Robert									✓
NREL	Engineering of Balance of Plant (BOP) for High-Temperature Systems	Ma, Zhiwen Martinek, Janna							✓		



Collaboration: HydroGEN HTE Node Utilization

Lab	Node	Node PI	Nex-ceris	NWU	Red ox	Saint Gobain	UConn	USC	UTRC	WVU	Super-Node
SNL	High-Temperature X-Ray Diffraction (HT-XRD) and Complementary Thermal Analysis	Coker, Eric				✓					
LBNL	Metal-Supported SOEC	Tucker, Michael Wang, Ruofan		✓					✓		✓
LLNL	Multi-Scale Modeling of Solid-Sate Interfaces and Microstructures in High-Temperature Water Splitting Materials	Wook, Tase Wood, Brandon Frolov, Timofey									✓
NREL	Thin Film Combinatorial Capabilities for Advanced Water Splitting Technologies	Zakutayev, Andriy					✓			✓	
INL	SOEC Characterization	O'Brien, James		✓		✓					✓

Acknowledgements



Energy Materials Network
U.S. Department of Energy



HydroGEN
Advanced Water Splitting Materials

Authors

Richard Boardman
Huyen Dinh
Michael Tucker
Dong Ding
Zhiwen Ma
James O'Brien
Adam Weber
Andriy Zakutayev

Node Experts

Dong Ding
Michael Tucker
Zhiwen Ma
James O'Brien
Andriy Zakutayev
Brandon Wood
David Ginley
Josh Sugar
Eric Coker

HTE Project Leads

Scott Barnet, NU
Tianli Zhu, UTRC
Prabhakar Singh, UConn
John Pietras, Saint Gobain
Xingo Liu
Olga Marina, PNNL

Research Teams



**United Technologies
Research Center**



University of
Connecticut

SAINT-GOBAIN

**West Virginia
University**



Northwestern
University

NEXCERIS
where energy meets environment

REDOX

Redox Power Systems, LLC



UNIVERSITY OF
SOUTH CAROLINA



Acknowledgements



Energy Materials Network
U.S. Department of Energy



HydroGEN
Advanced Water Splitting Materials

HTE Supernode Team - 18 experts

