

HYROBOTICS SPI PLUG for ROBOT & IMM

For EUROMAP 12



HY-SPI-IMM-12 (For IMM)

- **SPI (Society of Plastics Industry) Robot Interface Plug for Molding Machine side**
(Rectangular hole required)
- Die-Casting housing, 16 female Socket, 16 male pin, Seal for cabinet
- SPI Standard for North America
- Euromap 12 for European Machine
- Part # : HY-SPI-IMM-12
- **Price: \$ 239.00**
- SPI Wiring Information Included

HY-SPI-DUMMY-12

- **SPI (Society of Plastics Industry) Robot Dummy Plug for Molding Machine side**
- Die-Casting housing, 16 male pin
- Wiring Required for Dummy Operation
- SPI Standard for North America
- Euromap 12 for European Machine
- Part # : HY-SPI-DUMMY-12
- **Price: \$ 199.00**
- SPI Wiring Information Included



HY-SPI-ROBOT-12 (For ROBOT)

- **SPI (Society of Plastics Industry) Robot Interface Plug for ROBOT side**
- Die-Casting housing, 16 female Socket, 16 male pin
- SPI Standard for North America
- Euromap 12 for European Machine
- Part # : HY-SPI-ROBOT-12
- **Price: \$ 249.00**
- SPI Wiring Information Included

Order or Ask Question at

sales@hyrobotics.com

HYROBOTICS SPI PLUG for ROBOT & IMM

For EUROMAP 67

HY-SPI-IMM-67 (For IMM)



- **SPI (Society of Plastics Industry) Robot Interface Plug for Molding Machine side** (Rectangular hole required)
- Die-Casting housing, 25 female Socket, 25 male pin, and Seal for cabinet included
- SPI Standard for North America
- Euromap 67 for European Machine
- Part # : HY-SPI-IMM-67
- **Price: \$ 325.00**
- SPI Wiring Information Included
- Special Crimping Tool might Required

HY-SPI-DUMMY-67

- **SPI (Society of Plastics Industry) Robot Dummy Plug for Molding Machine side**
- Die-Casting housing, 25 male pin included
- Wiring Required for Dummy Operation
- SPI Standard for North America
- Euromap 67 for European Machine
- Part # : HY-SPI-DUMMY-67
- **Price: \$ 245.00**
- SPI Wiring Information Included
- Special Crimping Tool might Required



HY-SPI-ROBOT-67 (For ROBOT)

- **SPI (Society of Plastics Industry) Robot Interface Plug for ROBOT side**
- Die-Casting housing, 25 female Socket, 25 male pin included
- SPI Standard for North America
- Euromap 67 for European Machine
- Part # : HY-SPI-ROBOT-67
- **Price: \$ 349.00**
- SPI Wiring Information Included
- Special Crimping Tool might required



HYROBOTICS ADAPTOR PLUG

for

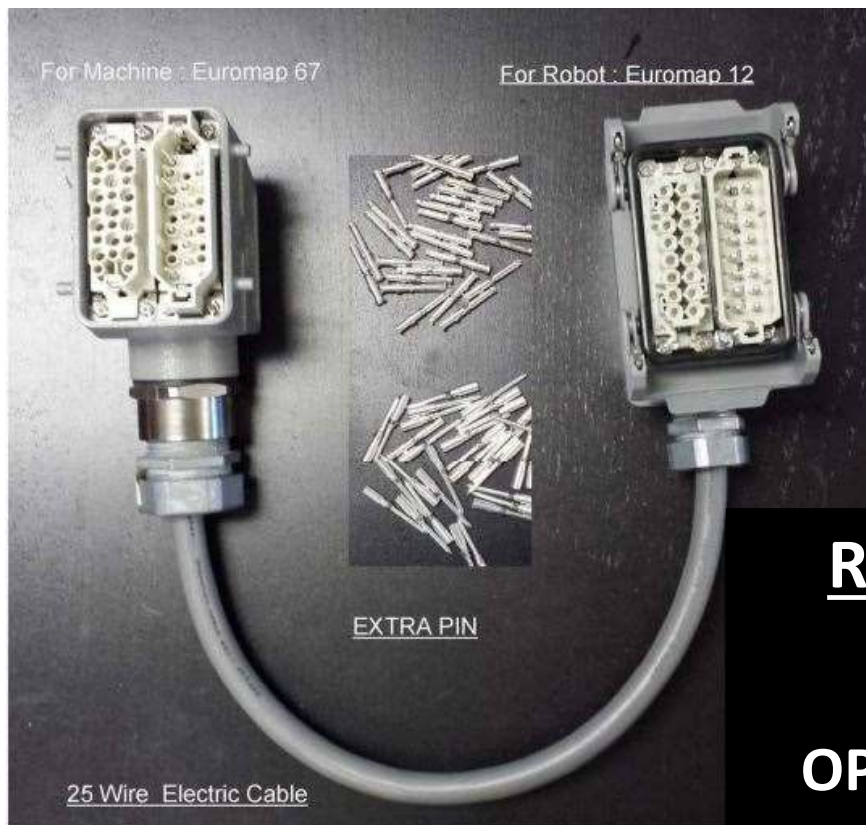
EUROMAP 67
In Mold Machine



EUROMAP 12
Robot

HY-67-12-PLUG

- HYRobotics Robot Adaptor Interface Plug for **Molding machine side from Euromap 67 to Euromap 12 Robot**
- Including:
 1. Die-casting Housing, 25 Female Socket, 25 Male Pin for Machine
 2. Die-casting housing, 16 Female Socket, 16 Male pin for Robot
 3. Wiring with Cord Grip (Ready to Use)
 4. Extra 10 Female pin, and 10 Male pin
- Part #: HY-67-12-PLUG
- **Price: \$ 1,450.00**
- Extra wiring might required for Core and Other optional Interface
(Depends on Machine manufacturing company and Robot Manufacturing company)



Order or Ask Question at
sales@hyrobotics.com

READY TO USE!

**JUST PLUG &
OPERATE ROBOTS!**



HYROBOTICS CORP

5319 Brown Ave. Saint Louis MO 63120
www.HYROBOTICS.com 314-574-5777

HYROBOTICS ADAPTOR PLUG

for

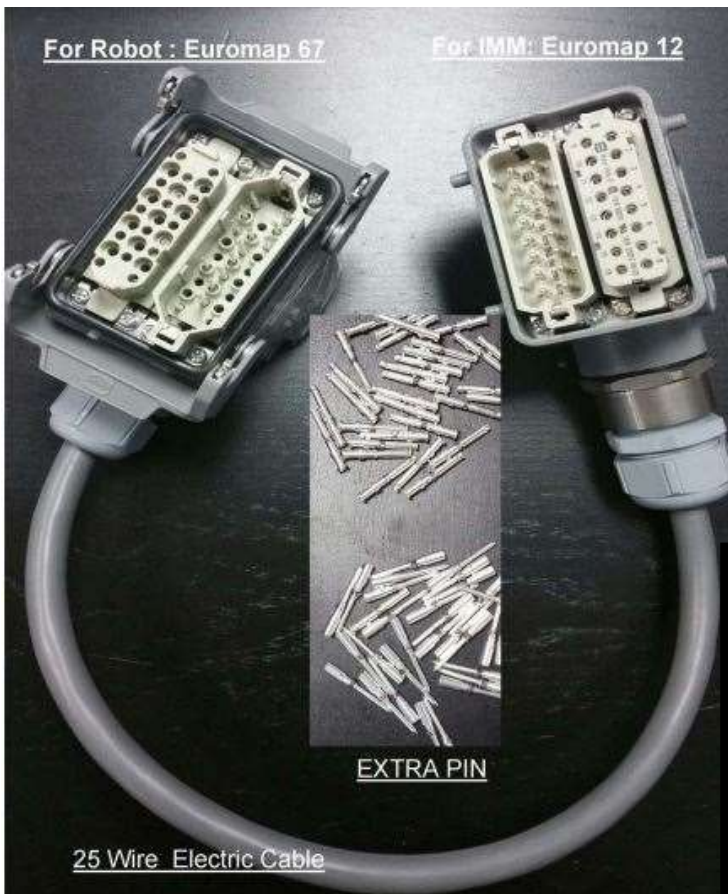
EUROMAP 12
In Mold Machine



EUROMAP 67
Robot

HY-12-67-PLUG

- HYRobotics Robot Adaptor Interface Plug for **Molding machine side from Euromap 12 to Euromap 67 Robot**
- Including:
 1. Die-casting Housing, 25 Female Socket, 25 Male Pin for Robot
 2. Die-casting housing, 16 Female Socket, 16 Male pin for Machine
 3. Wiring with Cord Grip (Ready to Use)
 4. Extra 10 Female pin, and 10 Male pin
- Part #: HY-12-67-PLUG
- **Price: \$ 1,450.00**
- Extra wiring might required for Core and Other optional Interface (Depends on Machine manufacturing company and Robot Manufacturing company)



Order or Ask Question at
sales@hyrobotics.com

READY TO USE!

**JUST PLUG &
OPERATE ROBOTS!**



HYROBOTICS CORP

5319 Brown Ave. Saint Louis MO 63120
www.HYROBOTICS.com 314-574-5777

EPIK Series Take Out Robots

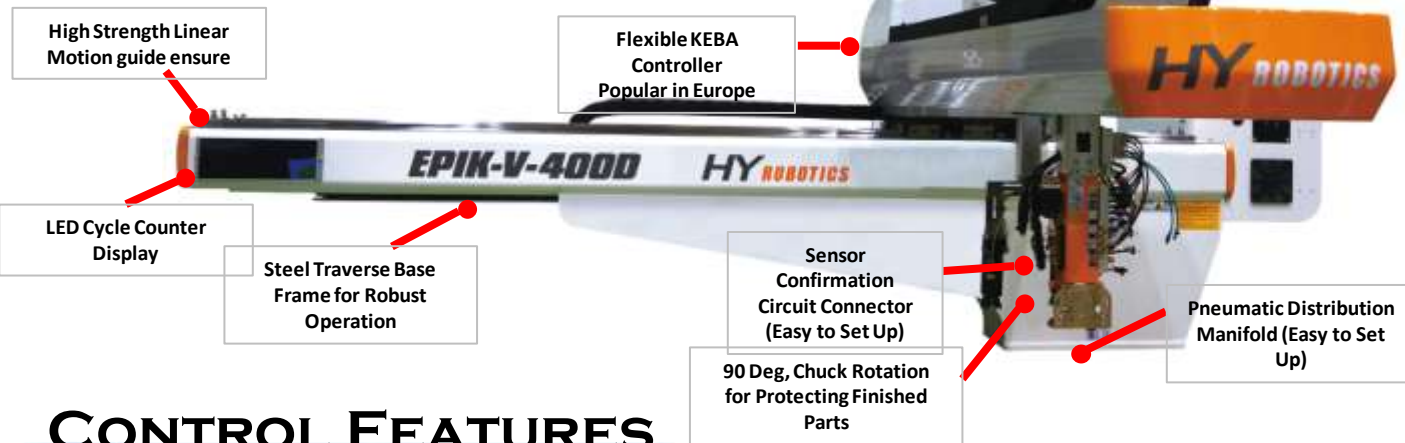
For 200 ~ 4000 Tons IMM

STANDARD FEATURES

- 4 Axis Traverse Robot (Traverse, Kick, Descent, Chuck Rotation)
- 3 Axis Servo Operation
- 1 Axis Pneumatic Operation (Festo : German Engineered Cylinder)
- Telescopic Arm
- User friendly , Standard and Famous HYNC-700 Control
- Euromap 12 or Euromap 67 IMM Interface (Ready to Run)
- 2 Vacuum circuits with 2 Chuck Units with Verification sensor
- 4 Point Suction EOAT is included is included.
- 8 User input and Output for communication with other Aux.
- Reject Programming with if condition statement.
- 90 Deg Chuck Rotation release ensures part protection.
- Ready to Install / run by Customers.



Flexible KEBA
Controller
Popular in Europe



CONTROL FEATURES

- Easy Mode or Free Programming
- Manual , Auto, Step, 1 Cycle operation.
- SPI 32 Pin or Euromap 67 Interface
- Easy Mode Select, Basic 4 Point , Easy to use Wait- ing, Take out, IMM Start, Release Position.
- Line by line programming can add multiple steps in addition of basic steps including position, motion (Vacuum, Chucking), input delay, output signal to secondary automation
- Stacking, Insert Molding is on program.
- Large 7.5" Keba Screen Controller.
- Standard SPI E-Stop Circuit.
- Body Attached Control and IMM interface box minimize foot print
- Industry 4.0 (Network Access, PC Control, Data collection, Etc.)

More Information
about EPIK Robot

Click Here



HYROBOTICS CORP, 5319 BROWN AVE. SAINT LOUIS MO 63120
WWW.HYROBOTICS.COM Email: Sales@hyrobotics.com

UNIK / UNIK-II Series Take Out Robots

For 30 ~ 1800 Tons IMM

STANDARD FEATURES

- 4 Axis Traverse Robot (Traverse, Kick, Descent, Chuck Rotation)
- 3 Axis Servo Operation
- 1 Axis Pneumatic Operation (Festo : German Engineered Cylinder)
- Telescopic Arm (UNIK-II Only)
- Euromap 12 or Euromap 67 IMM Interface (Ready to Run)
- 2 Vacuum circuits with 2 Chuck Units with Verification sensor
- 4 Point Suction EOAT is included is included.
- 8 User input and Output for communication with other Aux.
- Reject Programming with if condition statement.
- 90 Deg Chuck Rotation release ensures part protection.
- Ready to Install / run by Customers.
- Special Custom Programming can be done by customer

ISO9001
CE Certified

High Strength Flexible
Cable Carrier for
longer wire protection
from repetitive
operation
in harsh condition
for all 3 Axis

Pneumatic Distribution
Manifold (Easy to Set
Up)

Sensor
Confirmation
Circuit Connector
(Easy to Set Up)

Steel Traverse Base
Frame for Robust
Operation

High Strength Linear
Motion guide ensure

LED Cycle Counter
Display

Flexible KEBA
Controller
Popular in Europe

CONTROL FEATURES

- Easy Mode or Free Programming
- Manual , Auto, Step, 1 Cycle operation.
- SPI 32 Pin or Euromap 67 Interface
- Easy Mode Select, Basic 4 Point , Easy to use Waiting, Take out, IMM Start, Release Position.
- Line by line programming can add multiple steps in addition of basic steps including position, motion (Vacuum, Chucking), input delay, output signal to secondary automation
- Stacking, Insert Molding is on program.
- Large 7.5" Keba Screen Controller.
- Standard SPI E-Stop Circuit.
- Body Attached Control and IMM interface box minimize foot print
- Industry 4.0 (Network Access, PC Control, Data collection, Etc.)

More Information
about UNIK Robot

 Click Here



HYROBOTICS CORP, 5319 BROWN AVE. SAINT LOUIS MO 63120
WWW.HYROBOTICS.COM Email: Sales@hyrobotics.com

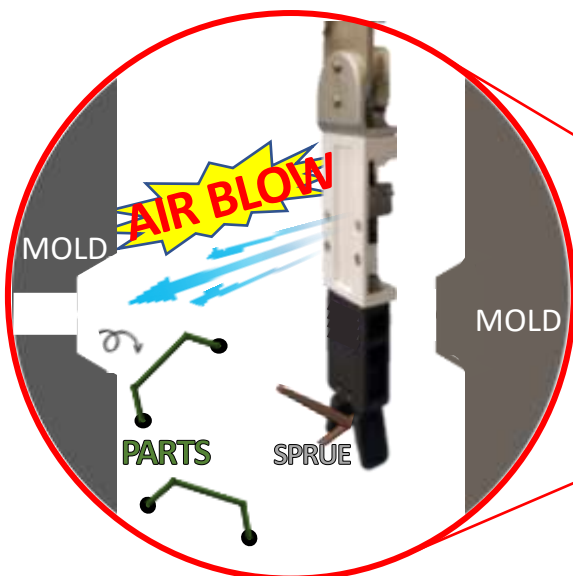
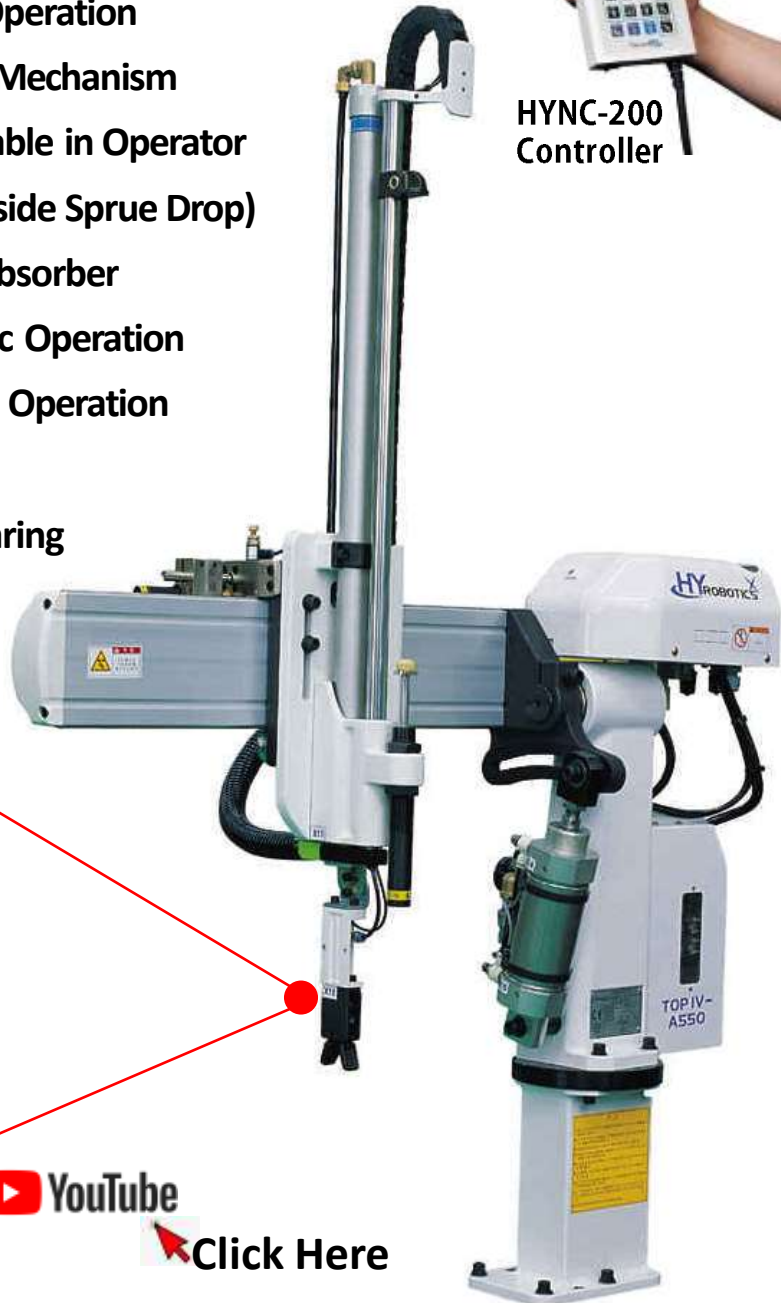
TOP IV

SPRUE PICKING ROBOT with **AIR BLOW**

- Gripper with **AIR BLOW NOZZLE**
- Best fits for small molded parts
- For IMM 35 Ton – 450 Ton
- Descent Arm (Y-Axis): Pneumatic Operation
- Festo Actuator: Angle Adjustment Mechanism
30-85 Deg (Available in Operator and Non-Operator side Sprue Drop)
- Non-Telescopic, Ball Bush, Shock Absorber
- Swing Angle (Z-Axis): For Pneumatic Operation
- Kick Stroke (X-Axis): For Pneumatic Operation
- Quick & Easy Self-Installation
- Single Arm Support, Ball Roller Bearing



HYNC-200
Controller



Click Here

Labeling Automation with HCR-5



Click Here



1. HCR-5 ROBOT

Collaboration Robot: No safety fence required

- 6 Axis Servo Robot
- Application : Labeling / Secondary Automation
- Controller : Icon based GUI pendant
- Payload : 5 Kg (11 lb)
- Max Reach : 915 mm (36")
- Rotation : -180 ~ + 180 Deg
- Speed : 180 Deg / Sec , Tool : 1 meter/Sec
- Repeatability : 0.1 mm
- Total Weight : 20 Kg
- I.O Port : 20 Input, 20 Output
- Power : 110 Volts

Controller



2. LABEL PRINTER*

**Collaborate work with industrial label printers
with peeler / dispenser mode**

Full automation for dispense, print-apply labels to various items, products, containers or packages.



Ready To Use

Simple To Use



HYROBOTICS CORP, 5319 BROWN AVE. SAINT LOUIS MO 63120
WWW.HYCOBOT.COM Email: Sales@hyrobotics.com

HCR-5 Collaboration robot & Automated Visual Inspection

 YouTube  Click Here



Collaboration Robot: No safety fence required

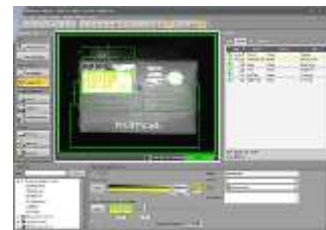
- HCR – 5 Collaboration Robot
- 6 Axis Servo Robot
- Application : **Visual Inspection** / **Secondary Automation**
- Controller : Icon based GUI pendant
- Payload : 5 Kg (11 lb)
- Max Reach : 915 mm (36”)
- Rotation : -180 ~ + 180 Deg
- Speed : 180 Deg / Sec , Tool : 1 meter/Sec
- Repeatability : 0.1 mm
- Total Weight : 20 Kg
- I.O Port : 20 Input, 20 Output
- Power : 110 Volts



Cognex In-Sight 2000 Vision Sensor*

Pass/fail applications that help ensure products and packaging manufactured on an automated production line for error-free / meet stringent quality standards.

(*Optional product)



HCR communicates with Vision sensor

Visual Inspection



Pick up & Sorting



PASS

FAIL

PACKAGING
PALLETIZING

SCRAP
DISUSE

