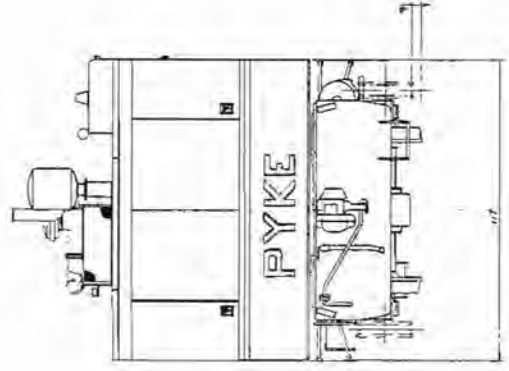
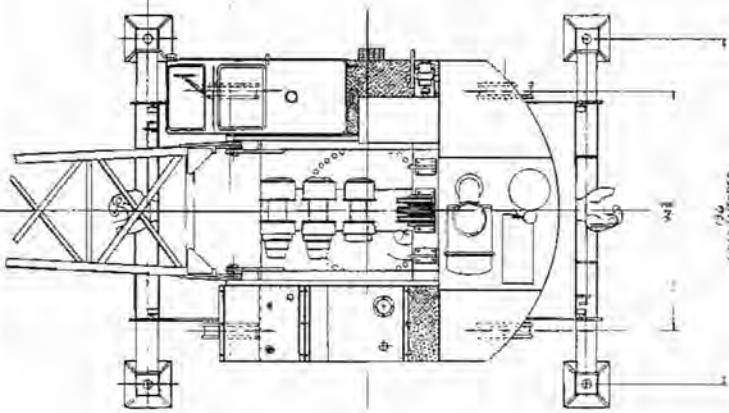
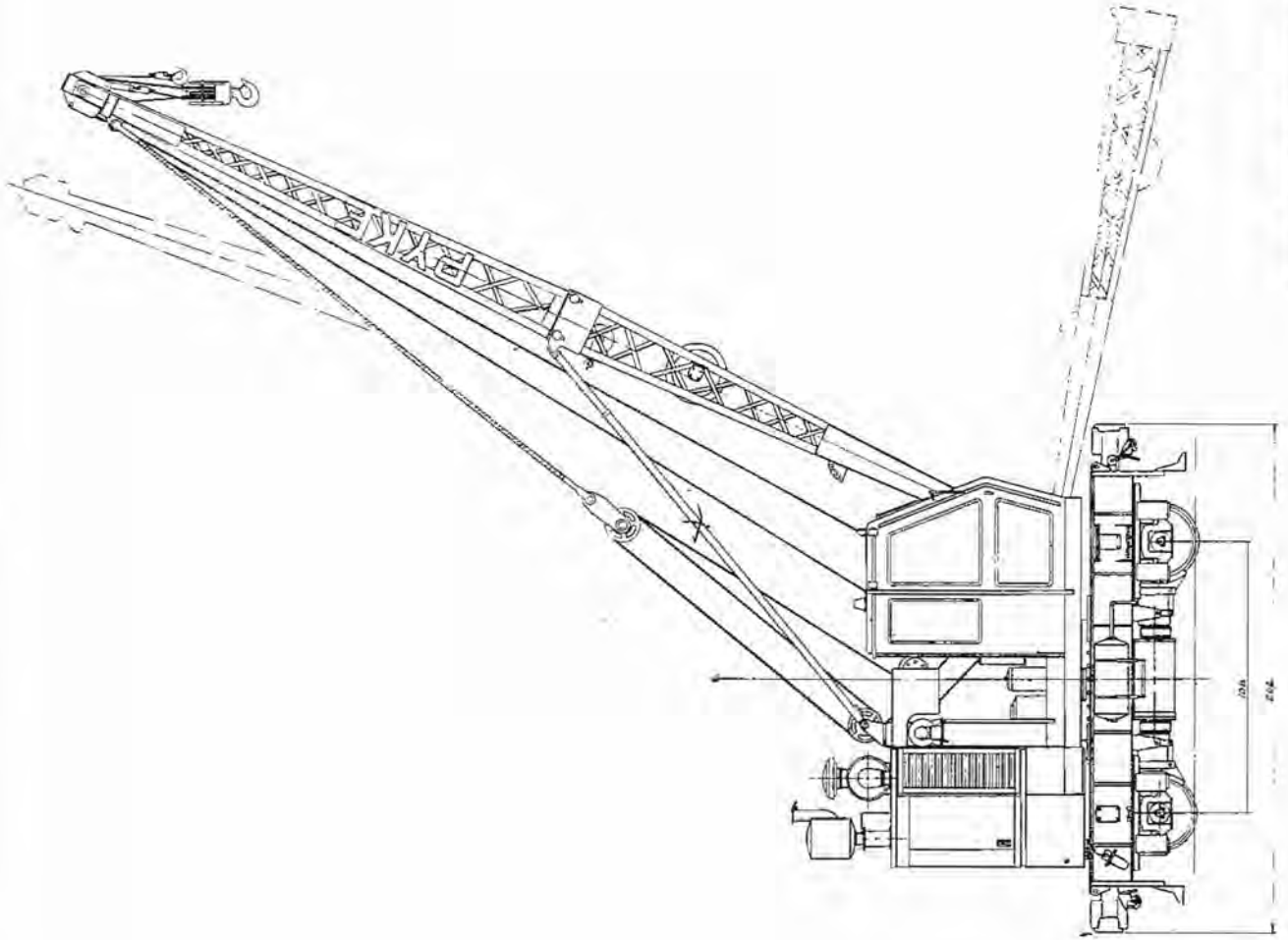
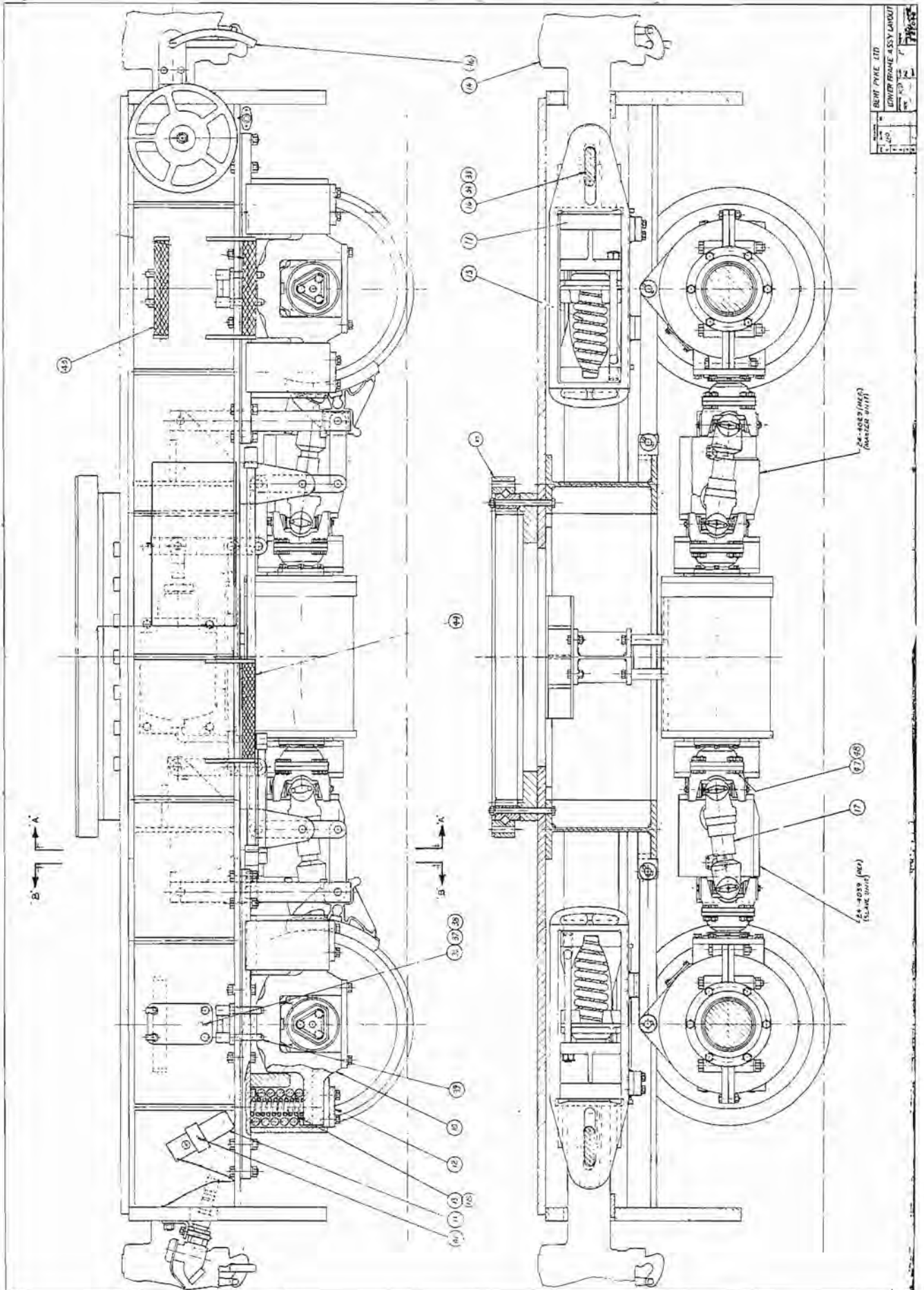


BENT PYKE LTD.		FIG. 1
10 TON CRANE		E22000
MAIN ASSEMBLY		
Scale	1" = 10'	
Notes		
1. See Detail E22001 for hook and block.		
2. See Detail E22002 for counterweight.		
3. See Detail E22003 for jib.		
4. See Detail E22004 for base.		
5. See Detail E22005 for motor.		
6. See Detail E22006 for controls.		
7. See Detail E22007 for hydraulic system.		
8. See Detail E22008 for safety devices.		
9. See Detail E22009 for electrical system.		
10. See Detail E22010 for miscellaneous parts.		





18 TON CRANEMAIN ASSEMBLYDRAWING
E22000

<u>NUMBER</u>	<u>PART NUMBER</u>	<u>NAME</u>	<u>QUANTITY</u>
1	E10729	Boom Assembly	1
2	E22037	Rotating Deck Assembly	1
3	E22046	Lower Frame Assembly	1
4	D22049	Pneumatics Bottom Deck	1
5	D22121	Pneumatics Top Deck	1
6	D22110	Hydraulic Schematic	1
7	D22111	Hydraulic Piping	1
8	D22084	Electrical Diagram	1
9	C22088	Light & Horn Mounting	1

18/20 TON CRANE
LOWER FRAME ASSEMBLY

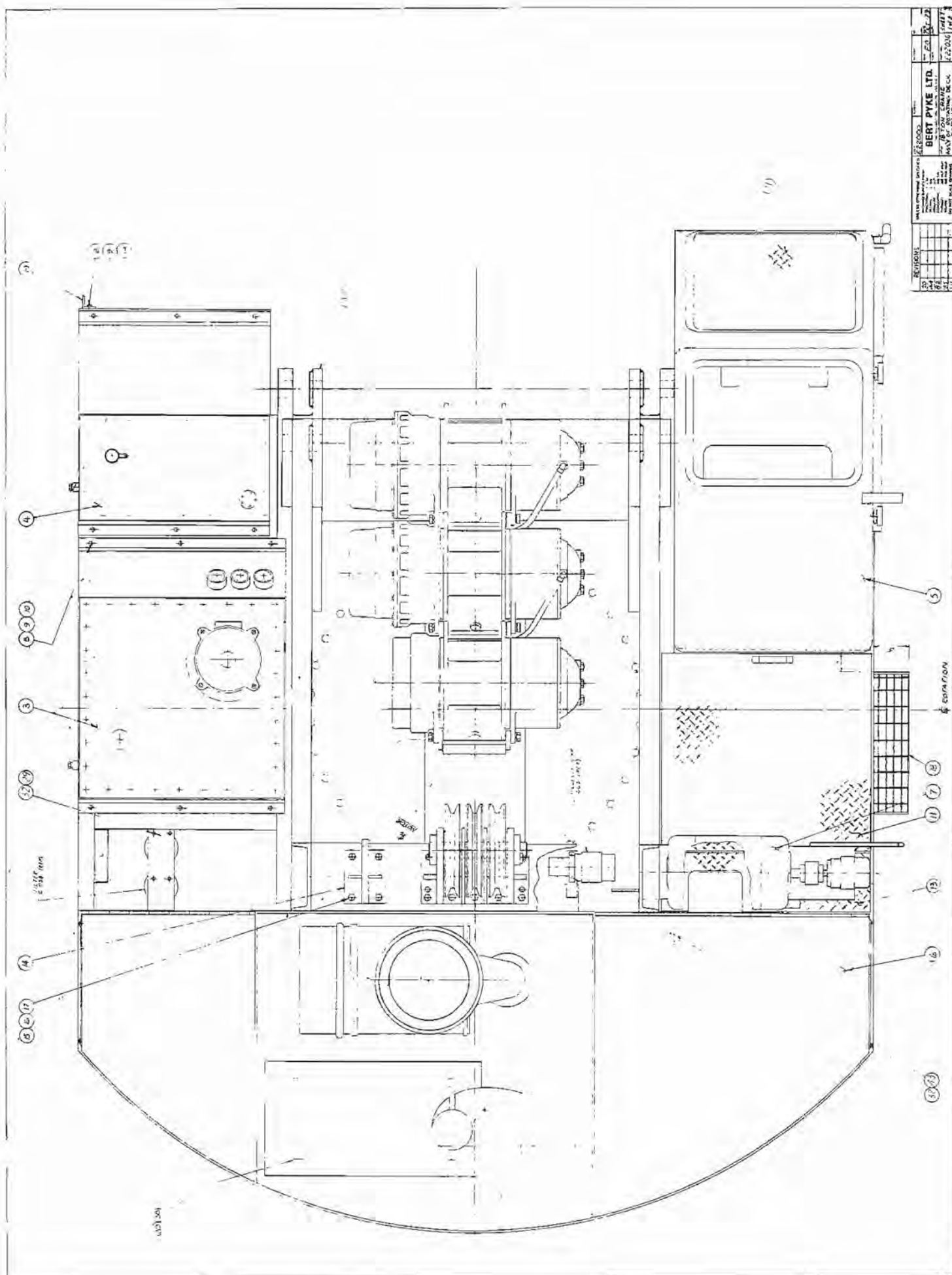
DRAWING
E-22046

<u>NUMBER</u>	<u>PART NUMBER</u>	<u>NAME</u>	<u>QUANTITY</u>
1	E-22034	Optional Extended Axle Assembly	2
2	E-22045	Axle Assembly	2
3	E-16050	2 Speed Power Shifted Gearbox	1
4	E-10670	Baseframe Assembly	1
5	B-22044	Tank Strap	4
6	E-22048	Turntable Assembly	1
7	B-10674	Torque Arm	2
8	D-10711	Brake Assembly	1
9	B-10704	Drive Support	1
10	D-10676	Bearing Housing	4
11	A-10738	Draft Gear Wedge	2
12	C-10678-2	Spring Cover Plate	8
13	9502	Inner Springs	8
14	9503	Coupler	2
15	9504	Draft Gear	2
16	9505	Draft Key	2
17	9506	Drive Shaft	2
18	9516	Outer Springs	8
19			
20	2748	Flat Washer	8
21	B-10727-1-2	Support Plate	4
22	2768	Washer	72
23	0885	Bolt	80
24	4114	Bearing	4
25	2516	Nut	8
26	5003-17	Pin	4
27	2818	Pin	8
28	2742	Washer	8
29	1015	Bolt	48
30	2518	Nut	48
31	2770	Washer	48
32			
33	B-10749	Plate	4
34	9507	Retainer	2
35	9508	Keeper	2
36	B-10732	Shim Plate	4

18/20 TON CRANE
LOWER FRAME ASSEMBLY

DRAWING
E-22046

<u>NUMBER</u>	<u>PART NUMBER</u>	<u>NAME</u>	<u>QUANTITY</u>
37	B-10733	Shim Plate	4
38	B-10734	Shim Plate	4
39	B-10740	Pin	4
40	B-22124	Toolbox Assembly	1
41	C-22063	Lockplate	2
42	E-22046-42	Channel	2
43	C-22066-2	Step	2
44	C-22066-1	Step	3
45	B-22126	Step	1
46	B-22070	Coupler Release Bar	2
47	2663	Locknut	48
48	2704	Flat Washer	48
49	C-22145	Shifting Control Assembly	1



18/20 TON CRANE
ROTATING DECK ASSEMBLY

DRAWING

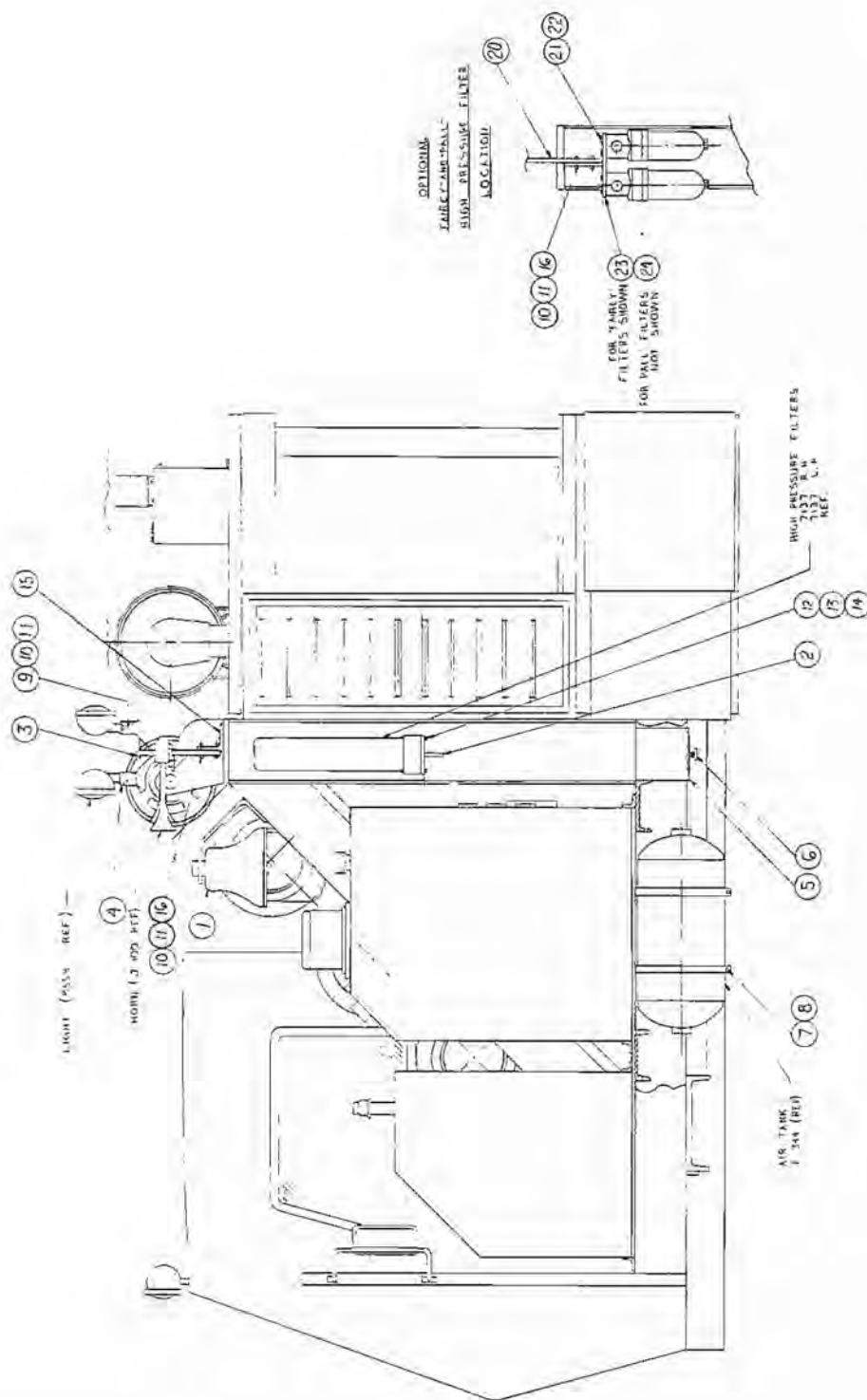
E-22036

<u>NUMBER</u>	<u>PART NUMBER</u>	<u>NAME</u>	<u>QUANTITY</u>
1	E-22001	Rotating Deck (first stage)	1
2	E-22004	Rotating Deck (second stage)	1
3	D-22007	Hyd. Oil Tank	1
4	D-22093	Fuel Tank	1
5	D-22167	Cab Assembly	1
6	E-22104	Eng. Compartment	1
7	D-22016	Generator Assembly	1
8	0557	Bolt	14
9	2510	Nut	11
10	2764	Lock Washer	14
11	E-22036-11	Floor Plate	1
12			
13	D-22005-10	Floor Plate	1
14	C-10725	Bracket	2
15	0901	Bolt	8
16	2516	Nut	8
17	2768	Washer	8
18	B-22126-1	Step	1
19	A-22135	Mirror Post	1
20	D-10722	Sheave Block	1
21	C-22072	Cover	1
22	E-22048	Swivel Joint	1
23	B-22078-4&5	Bolt	2
24	B-22073-1	Hand Rail	1
25	B-22073-2	Hand Rail	1
26	B-22074	Hand Rail	1
27	B-22075	Grab Handles	1
28	B-22078	Battery Cover	1
29	2762	Lockwasher	2
30	2506	Nut	2
31	E-22036-31	Floor Plate	1
32	0323	Bolt	6
33	0887	Bolt	4
34	2768	Lockwasher	4
35	0987	Bolt	12
36	2741	Flat Washer	12

18/20 TON CRANE
ROTATING DECK ASSEMBLY

DRAWINGE-22036

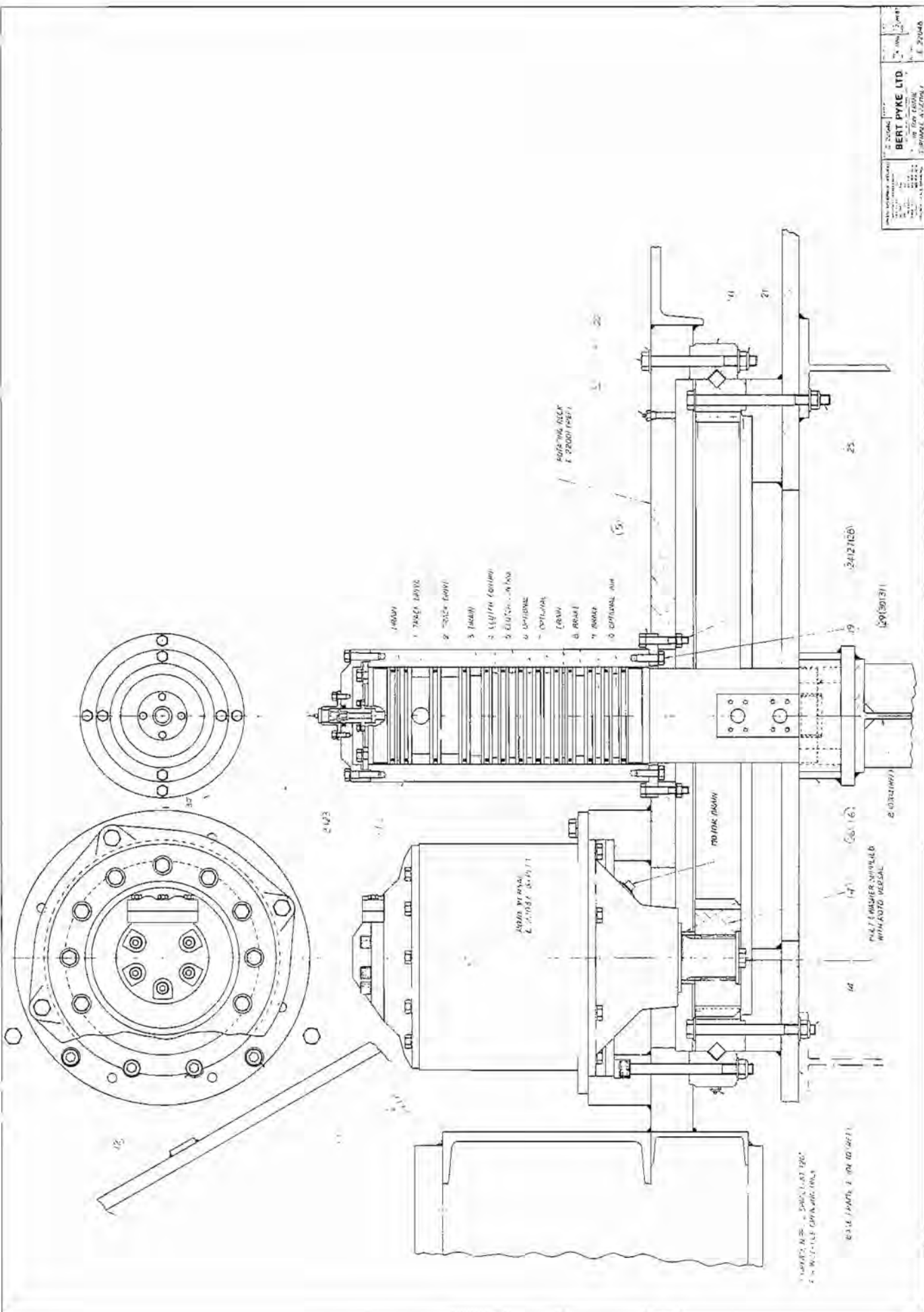
<u>NUMBER</u>	<u>PART NUMBER</u>	<u>NAME</u>	<u>QUANTITY</u>
37	2770	Lockwasher	12
38	0187	Hex Bolt	4
39	2703	Washer	4
40	0335	Bolt	4
41	2506	Nut	4
42	2703	Washer	8
43	2762	Lockwasher	6



REF	UNITED STATES DEPARTMENT OF COMMERCE BUREAU OF ECONOMIC ANALYSIS WASHINGTON, D. C. 20540	NAME OF FIRM F 22000	TYPE OF CONTRACT U P	DATE OF CONTRACT 1967	PROJECT NO. D-22088
11	1. Field Station, New York	BERT PYKE LTD. 1000 BAYVIEW BLVD. SUITE 1000 NEW YORK, N. Y. 10021			
22	2. Office, New York				
23	3. Office, New York				
24	4. Office, New York				
25	5. Office, New York				
26	6. Office, New York				
27	7. Office, New York				
28	8. Office, New York				
29	9. Office, New York				
30	10. Office, New York				
31	11. Office, New York				
32	12. Office, New York				
33	13. Office, New York				
34	14. Office, New York				
35	15. Office, New York				
36	16. Office, New York				
37	17. Office, New York				
38	18. Office, New York				
39	19. Office, New York				
40	20. Office, New York				
41	21. Office, New York				
42	22. Office, New York				
43	23. Office, New York				
44	24. Office, New York				
45	25. Office, New York				
46	26. Office, New York				
47	27. Office, New York				
48	28. Office, New York				
49	29. Office, New York				
50	30. Office, New York				
51	31. Office, New York				
52	32. Office, New York				
53	33. Office, New York				
54	34. Office, New York				
55	35. Office, New York				
56	36. Office, New York				
57	37. Office, New York				
58	38. Office, New York				
59	39. Office, New York				
60	40. Office, New York				
61	41. Office, New York				
62	42. Office, New York				
63	43. Office, New York				
64	44. Office, New York				
65	45. Office, New York				
66	46. Office, New York				
67	47. Office, New York				
68	48. Office, New York				
69	49. Office, New York				
70	50. Office, New York				
71	51. Office, New York				
72	52. Office, New York				
73	53. Office, New York				
74	54. Office, New York				
75	55. Office, New York				
76	56. Office, New York				
77	57. Office, New York				
78	58. Office, New York				
79	59. Office, New York				
80	60. Office, New York				
81	61. Office, New York				
82	62. Office, New York				
83	63. Office, New York				
84	64. Office, New York				
85	65. Office, New York				
86	66. Office, New York				
87	67. Office, New York				
88	68. Office, New York				
89	69. Office, New York				
90	70. Office, New York				
91	71. Office, New York				
92	72. Office, New York				
93	73. Office, New York				
94	74. Office, New York				
95	75. Office, New York				

18/20 TON CRANEDRAWINGLIGHT AND FILTER LOCATION ASSEMBLYD-22088

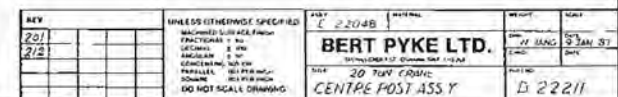
<u>NUMBER</u>	<u>PART NUMBER</u>	<u>NAME</u>	<u>QUANTITY</u>
1	D-22159	Bell Assembly	1
2	B-22174	Bracket	1
3	D-22130-2	Bracket	1
4	D-22130-3	Angle	2
5	B-22153	Oil Tank Trap	1
6	G-025	Drain Cock	1
7	2506	Hex Nut	2
8	2762	Lockwasher	2
9	0555	Hex Bolt	2
10	2764	Lockwasher	4
11	2510	Hex Nut	4
12	0603	Hex Bolt	8
13	2737	Flatwasher	8
14	2664	Stover Nut	8
15	B-22237	Mount	1
16	0563	Hex Bolt	2
17			
18			
19			
20	D-22130-2	Bracket	1
21	2762	Lockwasher	8
22	0323	Hex Bolt	8
23	D-22130-1	Bracket	1
24	C-22156	Bracket	1



18/20 TON CRANE
TURNTABLE ASSEMBLY

DRAWINGE-22048

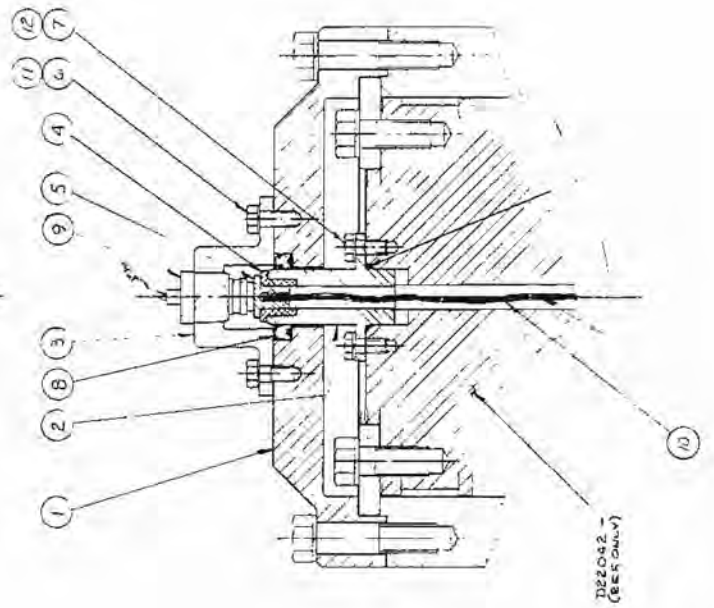
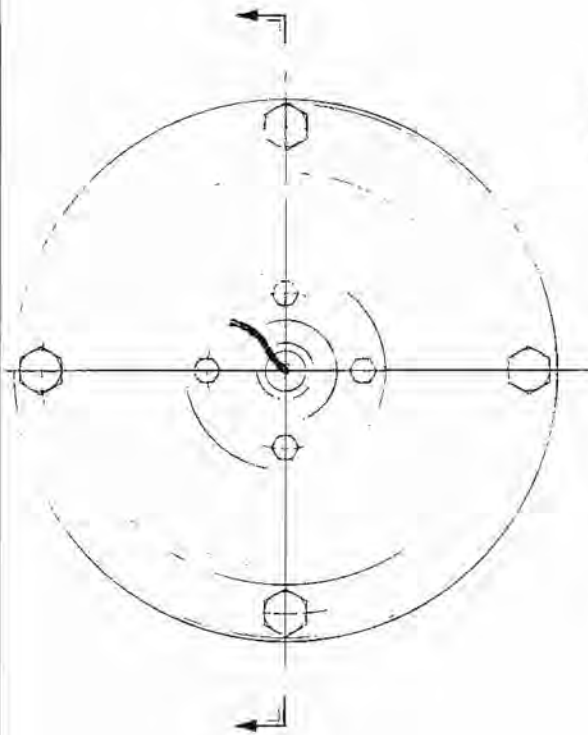
<u>NUMBER</u>	<u>PART NUMBER</u>	<u>NAME</u>	<u>QUANTITY</u>
1	D-22211	Centre Post Assembly	1
2			
3			
4	C-10669	Drive Gear	1
5	C-10679	Sleeve Lockplate	1
6	D-22047	Piston Bracket	1
7			
8			
9			
10			
11	4200-18	Slewing Ring	1
12	1768	Soc. Hd. Cap Screw	2
13	1769	Soc. Hd. Cap Screw	2
14	0956	Hex Bolt	32
15	0953	Hex Bolt	33
16			
17			
18	0885	Hex Bolt	4
19	0559	Hex Bolt	8
20	2757	Hardened Washer	154
21	2671	Locknut	82
22			
23	2768	Lockwasher	4
24	2764	Lockwasher	20
25	0957	Hex Bolt	10
26	A-22062	Spacer	1
27	0583	Hex Bolt	8
28	2510	Hex Nut	8
29	3792	Plug	6
30	3562	Plug	2
31	3635	Plug	2
32	3002	Grease Fitting	1



18/20 TON CRANE
CENTRE POST ASSEMBLY

DRAWINGD-22211

<u>NUMBER</u>	<u>PART NUMBER</u>	<u>NAME</u>	<u>QUANTITY</u>
1	D-22042	Piston Swivel Joint	1
2	D-10625	Swivel Sleeve	1
3	3900-58	Piston Seal	13
4			
5	3900-25	Wear Ring	2
6	B-10672	Swivel Washer	1
7	0555	Hex Bolt	4
8	2767	Flat Washer	4
9	0567	Hex Bolt	4
10	2764	Lockwasher	4
11	D-22040	Brush Retainer	1
12	D-22147	Back-up Alarm Assembly	1

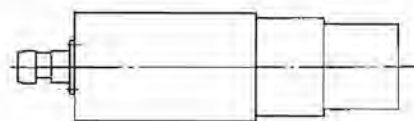
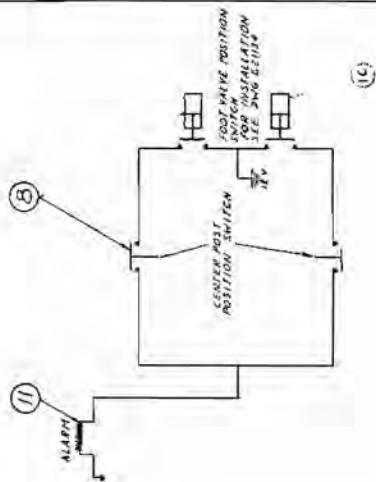


UNLESS OTHERWISE SPECIFIED		F 22042		Bert Pyke Ltd.		D22040	
MATERIALS		F 22042		Bert Pyke Ltd.		D22040	
DIMENSIONS		F 22042		Bert Pyke Ltd.		D22040	
TOLERANCES		F 22042		Bert Pyke Ltd.		D22040	
FINISHES		F 22042		Bert Pyke Ltd.		D22040	
COATINGS		F 22042		Bert Pyke Ltd.		D22040	
PAINTS		F 22042		Bert Pyke Ltd.		D22040	
WELDING		F 22042		Bert Pyke Ltd.		D22040	
DRILLING		F 22042		Bert Pyke Ltd.		D22040	
MILLING		F 22042		Bert Pyke Ltd.		D22040	
TURNING		F 22042		Bert Pyke Ltd.		D22040	
GRINDING		F 22042		Bert Pyke Ltd.		D22040	
BENDING		F 22042		Bert Pyke Ltd.		D22040	
FOLDING		F 22042		Bert Pyke Ltd.		D22040	
STAMPING		F 22042		Bert Pyke Ltd.		D22040	
POWDER METALLURGY		F 22042		Bert Pyke Ltd.		D22040	
OTHER		F 22042		Bert Pyke Ltd.		D22040	

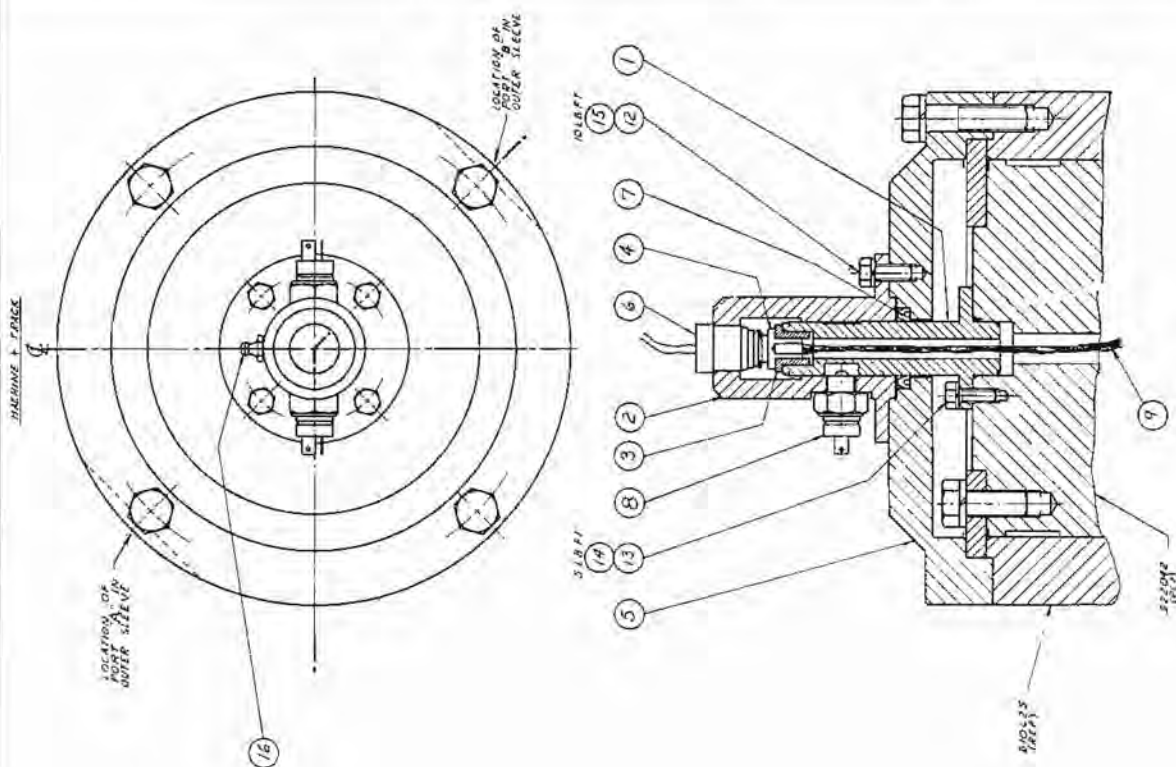
18/20 TON CRANE
CAP & BRUSH RETAINER

DRAWING
D-22040

<u>NUMBER</u>	<u>PART NUMBER</u>	<u>NAME</u>	<u>QUANTITY</u>
1	D-22041-1	End Cap	1
2	D-22041-2	Post Extension	1
3	D-22041-3	Cap	1
4	D-22041-4	Bushing	1
5	D-22041-5	Insert	1
6	0191	Bolt	4
7	0063	Bolt	4
8	D-22040-8	Seal	1
9	A-22151	Brush Holder Assembly	1
10	D-22040-10	Wire	1
11	2761	Lockwasher	4
12	2760	Lockwasher	4

[illegible]

CAM LOCATION

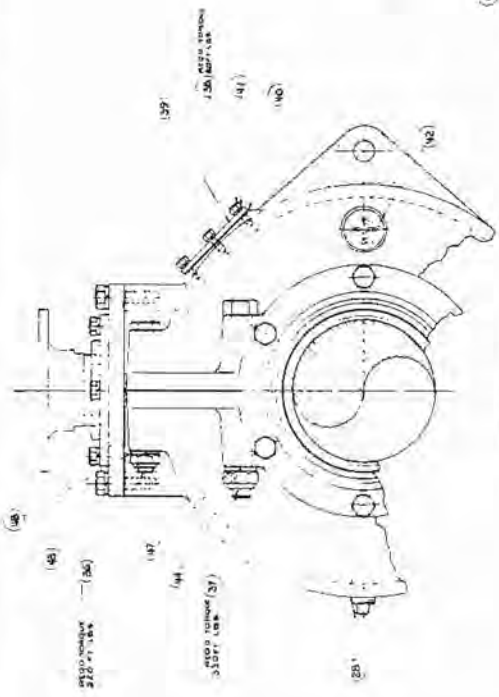
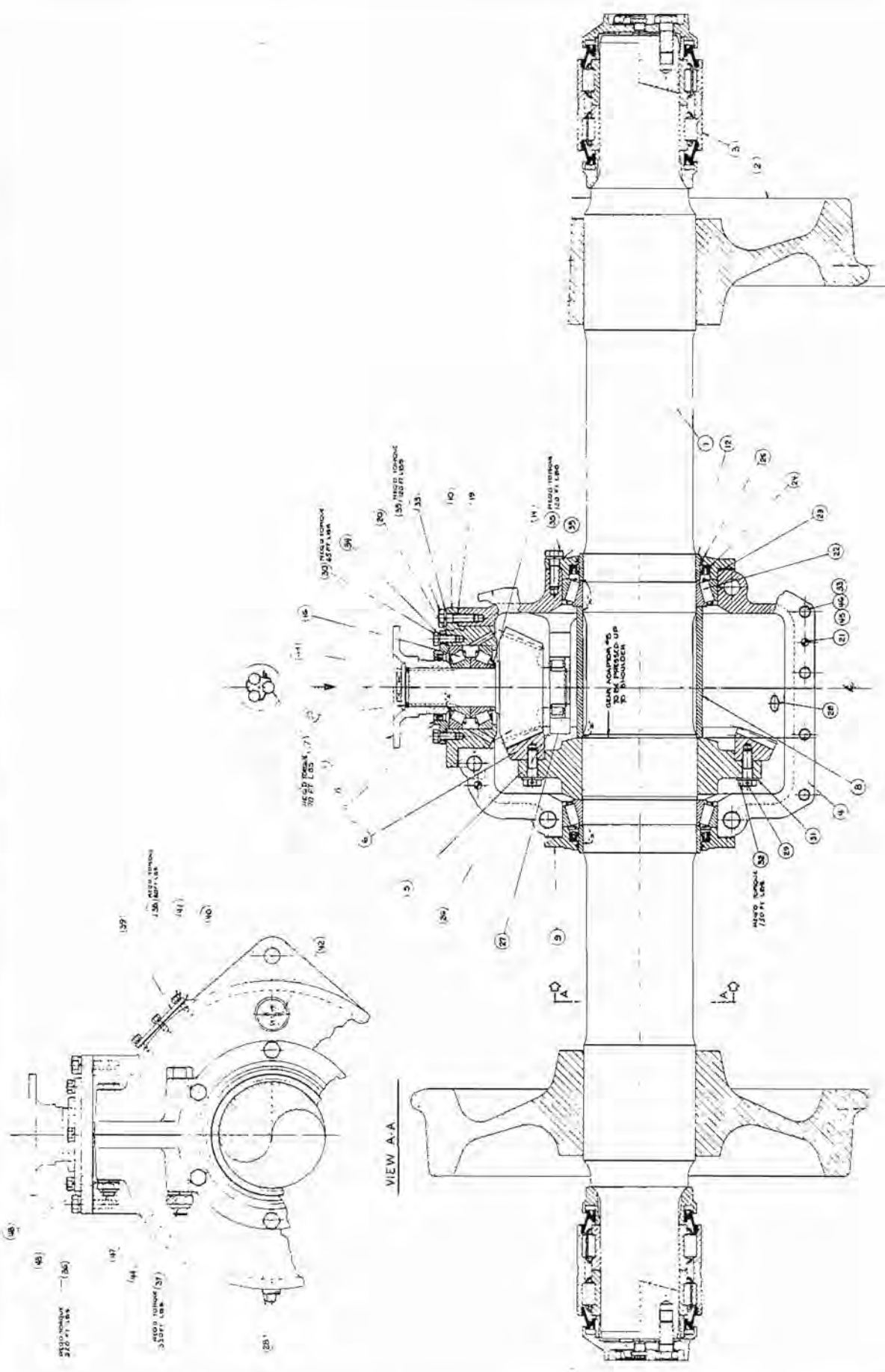


18/20 TON CRANE
BACK UP ALARM ASSEMBLY

DRAWINGD-22147

<u>NUMBER</u>	<u>PAR TNUMBER</u>	<u>NAME</u>	<u>QUANTITY</u>
1	B-22150	Cam	1
2	B-22149	Cover	1
3	D-22041-4	Bushing	1
4	D-22041-5	Insert	1
5	B-22148	End Cap	1
6	A-22151	Cap & Brush	1
7	3900-44	Seal	1
8	8638	Switch	2
9	8524	Electrical Wire	1
10	8669	Switch	2
11	8603	Back-Up Alarm	1
12	0187	Hex Hd. Bolt	4
13	0063	Hex Hd. Bolt	4
14	2760	Lockwasher	4
15	2761	Lockwasher	4
16	3004	Grease Nipple	1

REF. 1000

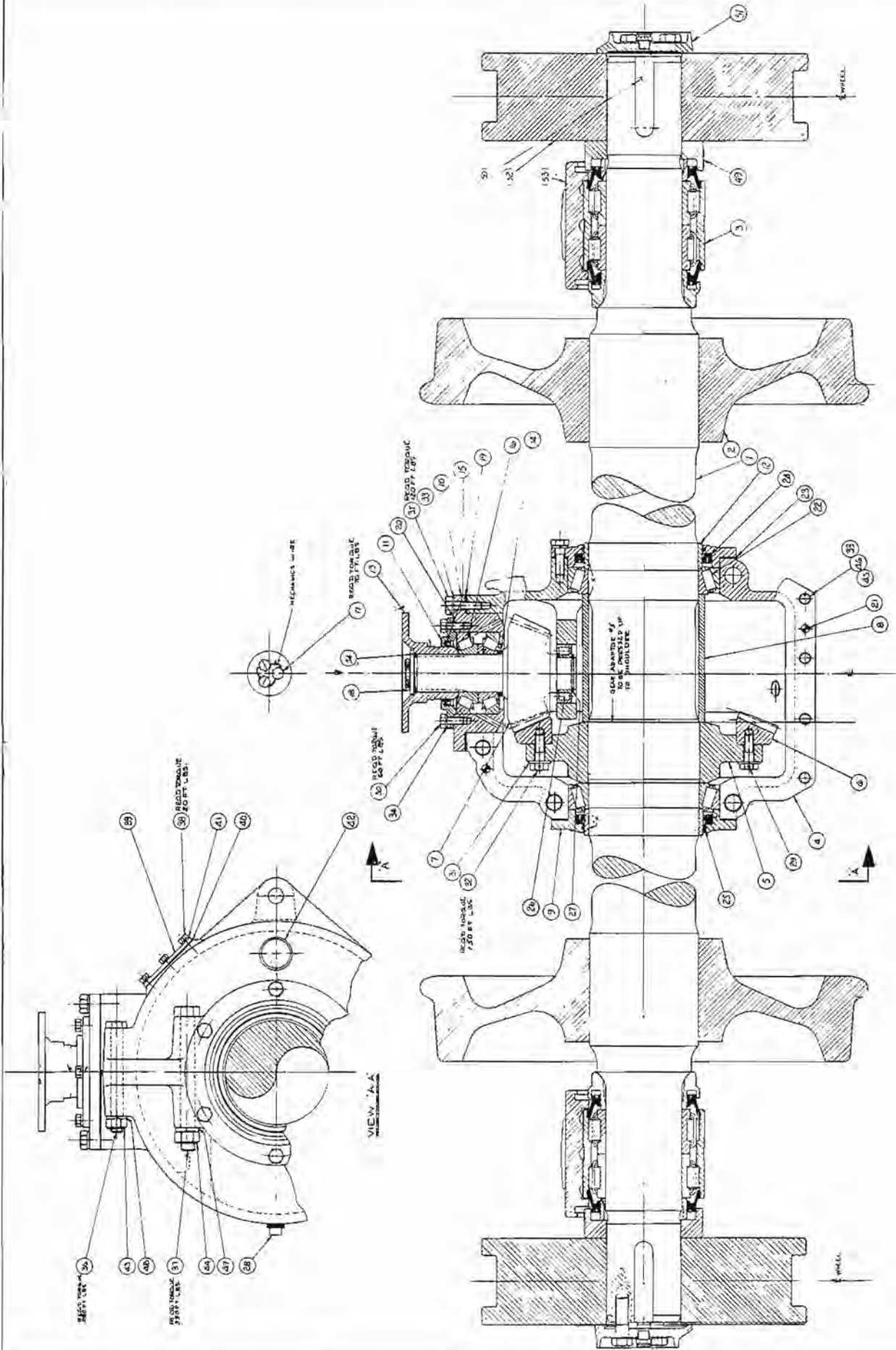


18/20 TON CRANEDRAWINGAXLE ASSEMBLYE-22045

<u>NUMBER</u>	<u>PART NUMBER</u>	<u>NAME</u>	<u>QUANTITY</u>
1	B-22166	Axle Sub Assembly	1
2	C-10659	Wheel	2
3	4200-16	Axle Bearing	2
4	E-10636	Cover Housing	1 SET
5			
6	C-10634	Bull Gear	1
7	D-22056	Pinion Gear	1
8	C-10657	Axle Spacer	1
9	C-10644	Bearing Cap	2
10	C-10641	Bearing Housing	1
11	C-10647	Pinion Bearing Cap	1
12	C-10658	Axle Collar	2
13	C-10659	Flange	1
14	A-10661	Bearing Spacer	1
15	3900-7	Seal	1
16	4200-13	Taper Roller Bearing	2
17	0556	Bolt	3
18			
19	C-10660-2	Shim Set	1
20	B-16069	Shim Set	1
21	2936	Roll Pin	2
22	4200-14	Taper Roller Bearing	2
23	C-10667	Shim Set (split)	2
24	3900-20	Seal	2
25	3900-52	Seal	2
26	4200-32	Cylindrical Roller Bearing	1
27	5258	Retaining Ring	1
28	3710	Sq. Head Pipe Plug	3
29	5259	Wire	1
30	0555	Hex Hd. Bolt	6
31	2759	Flat Steel Washer	12
32	1153	Hex Hd. Bolt	12
33	2766	Lockwasher	22
34	2764	Lockwasher	6
35	0777	Hex Hd. Bolt	18
36	1041	Hex Hd. Bolt	2

18/20 TON CRANEDRAWINGAXLE ASSEMBLYE-22045

<u>NUMBER</u>	<u>PART NUMBER</u>	<u>NAME</u>	<u>QUANTITY</u>
37	1152	Hex Hd. Bolt	4
38	0315	Hex Hd. Bolt	4
39	C-10666-1	Inspection Plate	1
40	C-10666-2	Gasket	1
41	2762	Lockwasher	4
42	7107	Breather Cap	1
43	2672	Locknut	2
44	2674	Locknut	4
45	2668	Locknut	4
46	0797	Hex Hd. Bolt	4
47	2771	Lockwasher	4
48	2770	Lockwasher	2
49	A-22058	Washer	1
50	3900-6	Sq. Section Ring	1



18/20 TON CRANEOPTIONALEXTENDED AXLE ASSEMBLYDRAWING
E-22034

<u>NUMBER</u>	<u>PART NUMBER</u>	<u>NAME</u>	<u>QUANTITY</u>
1	E-22033	Axle	1
2	C-10659	Wheel	2
3		Axle Bearing	2
4	E-10636	Cover Housing	1 SET
5			
6	C-10634	Crown Gear	1
7	D-22056	Pinion Gear	1
8	C-10657	Axle Spacer	1
9	C-10644	Bearing Cap	2
10	C-10641	Bearing Housing	1
11	C-10647	Pinion Bearing Cap	1
12	C-10658	Axle Collar	2
13	C-16059	Companion Flange	1
14	A-10661	Bearing Spacer	1
15	3900-7	Seal	1
16	4200-13	Taper Roller Bearing	2
17	0556	Bolt	3
18	A-22058	Washer	1
19	C-10660-2	Shim Set	1
20	C-10660-1	Shim Set	1
21	2936	Roll Pin	2
22	4200-14	Taper Roller Bearing	2
23	C-10667	Shim Set (split)	2
24	3900-20	Seal	2
25	3900-52	Seal	2
26	4200-32	Cyl. Roller Brg.	1
27	5258	Retaining Ring	1
28	3710	Sq. Hd. Plug	3
29	5259	Wire	1
30	0555	Hex. Bolt	6
31	2756	Flat Washer	12
32	1153	Hex. Bolt	12
33	2766	Lockwasher	22
34	2764	Lockwasher	6
35	0777	Hex Bolt	18

18/20 TON CRANEOPTIONALDRAWING
E22034EXTENDED AXLE ASSEMBLY

<u>NUMBER</u>	<u>PART NUMBER</u>	<u>NAME</u>	<u>QUANTITY</u>
36	1041	Hex Bolt	2
37	1152	Hex Bolt	4
38	0315	Hex Bolt	4
39	C-10666-1	Inspection Pl.	1
40	C-10666-2	Gasket	1
41	2762	Lockwasher	4
42	7107	Breather	1
43	2672	Locknut	2
44	2674	Locknut	4
45	2668	Locknut	4
46	0797	Hex Bolt	4
47	2771	Lockwasher	4
48	2770	Lockwasher	2
49	D-22035-1	Spacer	2
50	D-22035-2	Key	2
51	D-22035-3	End Cap	2
52	D-22035-4	Wheel	2
53	4200-36	Adaptor	2
54	3900-6	Sq. Section Ring	1

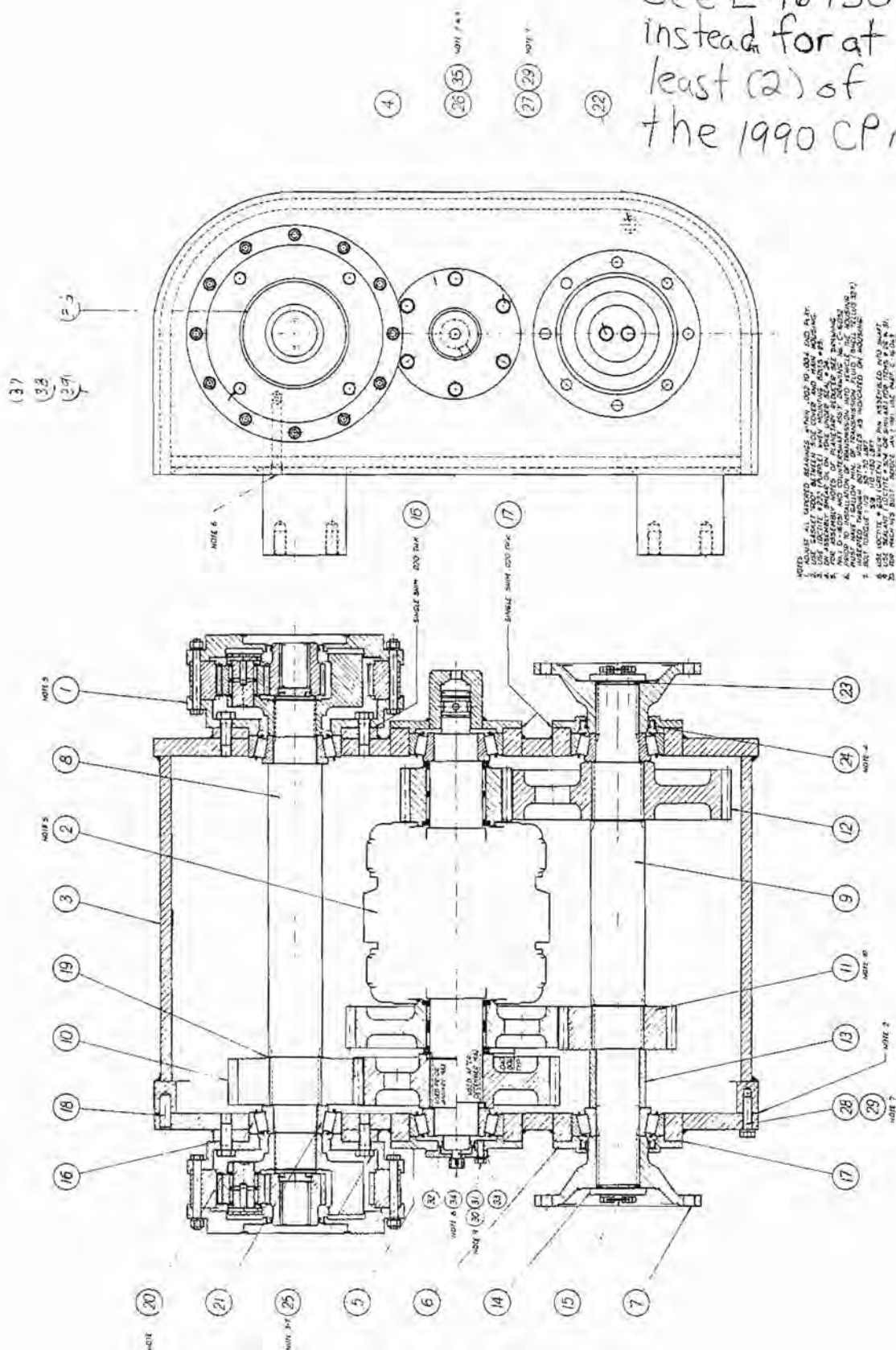
Page

20 TON CRANE
DRIVE SHAFT ASSEMBLY

DRAWING
D-22162

<u>NUMBER</u>	<u>PART NUMBER</u>	<u>DESCRIPTION</u>	<u>QUANTITY</u>
1	D-22162-1	Flange Yoke	2
2	D-22162-2	Bearing Kit	2
3	D-22162-3	Lock Strap	1
4	D-22162-4	Bolt	1
5	D-22162-5	Slip Yoke	1
6	D-22162-6	Dust Cap	1
7	D-22162-7	Cort Washer	1
8	D-22162-8	Steel Washer	1
9	D-22162-9	Yoke Shaft	1

Note:
See E-16730
instead for at
least (2) of
the 1990 CP m/c's.



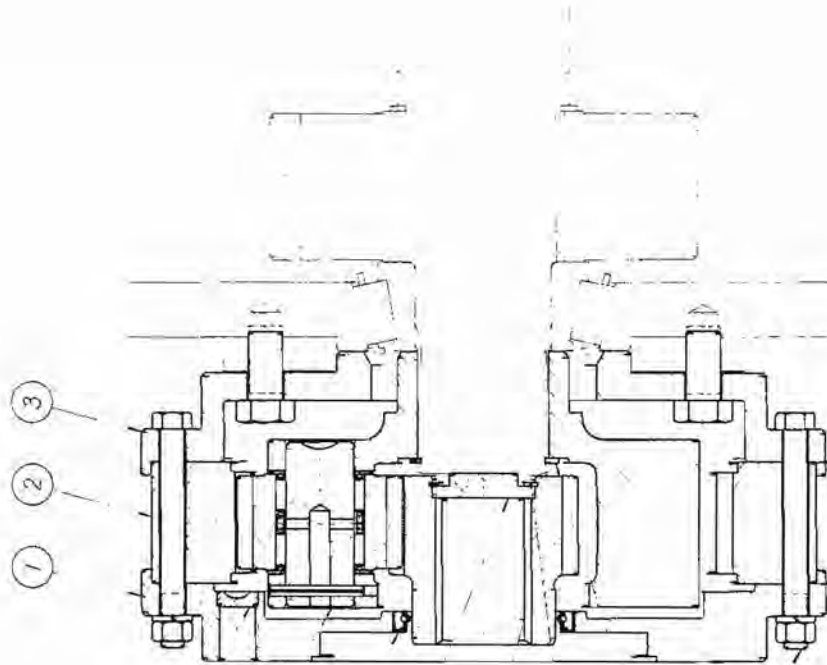
18/20 TON CRANE2 SPEED POWER SHIFTED GEARBOXDRAWING
E16050

<u>NUMBER</u>	<u>PART NUMBER</u>	<u>NAME</u>	<u>QUANTITY</u>
1	D-16051	Planetary Reducer Assembly	2
2	C-16052	Countershaft Assembly	1
3	D-16053	Housing Assembly	1
4	C-16056	Clutch Cover	1
5	C-16057	Countershaft Cover	1
6	C-16058	Output Shaft Cover	2
7	C-16059	Yoke	2
8	C-16087	Input Shaft	1
9	C-16061	Output Shaft	1
10	C-16062	Pinion 29T	1
11	C-16063	Pinion 25T or 27T	1
12	D-16064	Gear 51T	1
13	A-16065	Spacer	1
14	A-16066	Washer	2
15	A-16067	Wire	2
16	B-16068	Shims - large	A/R
17	B-16069	Shims - small	A/R
18	2909	Harden Dowel Pin	2
19	7624	Snap Ring	3
20	4200-20	Bearing Cup	6
21	4200-20	Bearing Cone	6
22	3710	Plug & Magnet	1
23	3900-6	O Ring	2
24	3900-7	Oil Seal	2
25	0773	Hex Bolt	24
26	0559	Hex Bolt	24
27	0555	Hex Bolt	4
28	0567	Hex Bolt	22
29	2764	Lockwasher	26
30	7320	Sealing Washer	2
31	0323	Hex Bolt	2
32	3900-31	Oil Seal	1
33	B-16089-1	Cover	1
34	A-16089-2	Pin	1
35	7321	Sealing Washer	24

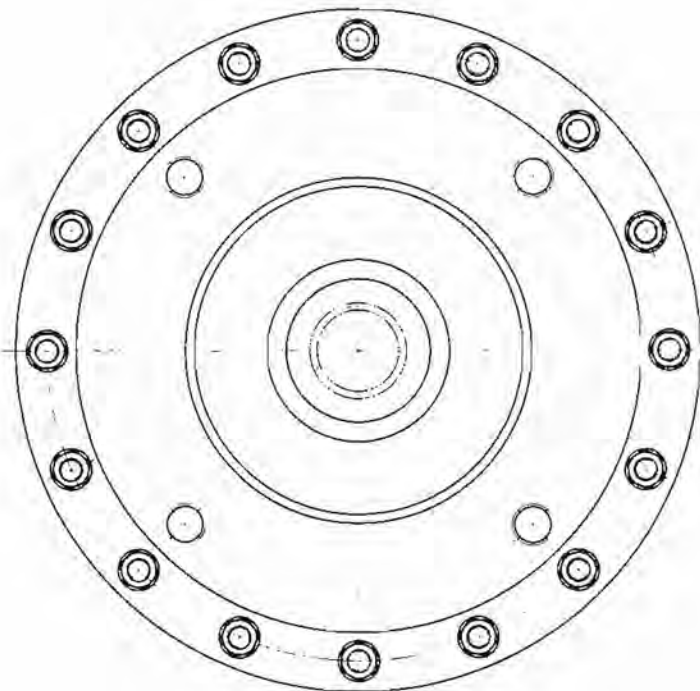
18/20 TON CRANE2 SPEED POWER SHIFTED GEARBOXDRAWING
E16050

<u>NUMBER</u>	<u>PART NUMBER</u>	<u>NAME</u>	<u>QUANTITY</u>
36	163-70D	"O" Ring	2
37	0883	Hex Bolt	8
38	2768	Lockwasher	8
39	2740	Flat Washer	8

BERT PYKE INC. - OSHANA	
PLANETARY REDUCE ASSY	
Part No. 10	Rev. 1.0
Drawn by J.B.N.	Check by J.B.N.
D-16.081	



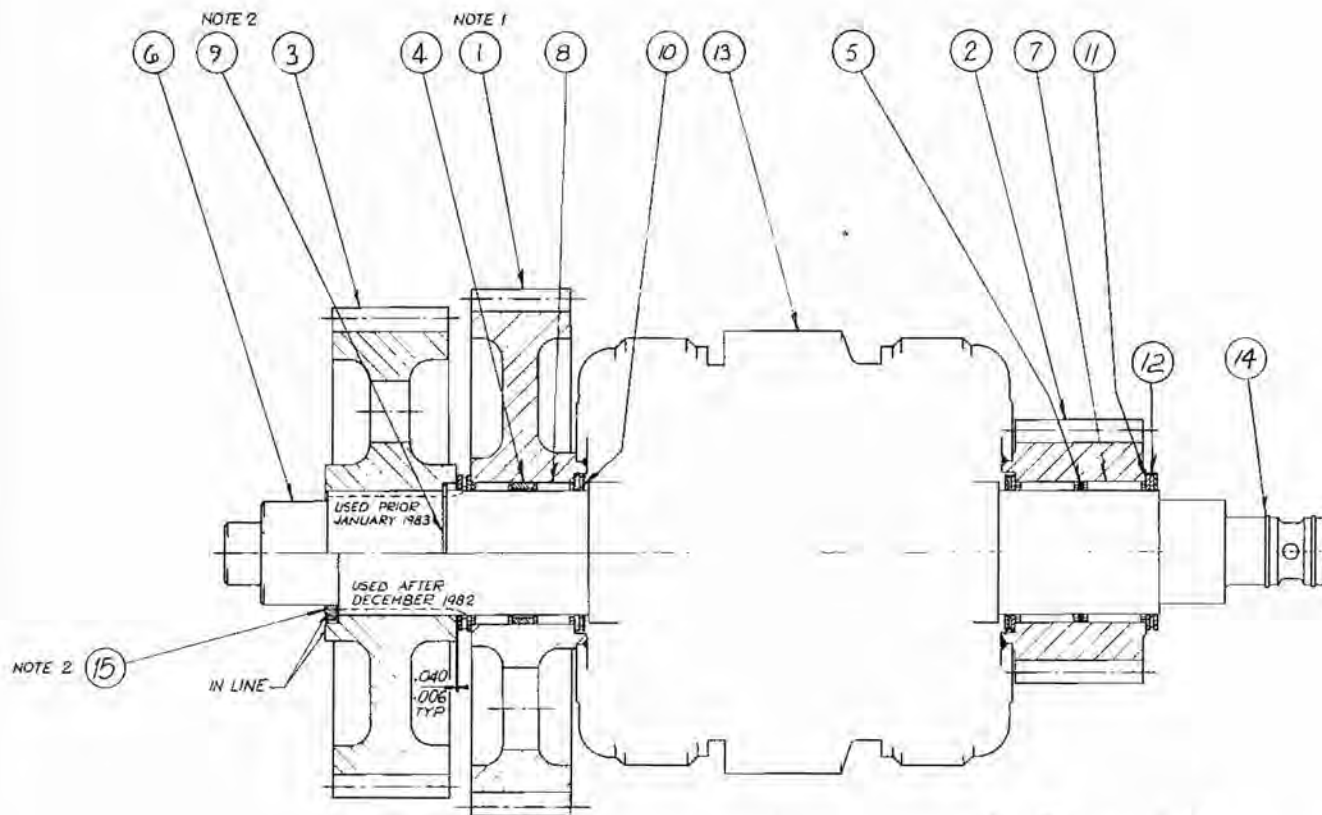
- 7 4 10 6 5 9 8 13 12 11



18/20 TON CRANE
PLANETARY REDUCE ASSEMBLY

DRAWING
D16051

<u>NUMBER</u>	<u>PART NUMBER</u>	<u>NAME</u>	<u>QUANTITY</u>
1	C-16076	Housing - Motor Side	1
2	C-16077	Ring Gear 70T	1
3	C-16078	Housing - Adapter	1
4	C-16079	Carrier - Assembly	1
5	B-16084	Sun Gear 26T	1
6	A-16085	Thrust Washer	1
7	A-16086	Plug	4
8	7631	Snap Ring	1
9	7601	Snap Ring	1
10	3900-32	Oil Seal	1
11	0487	Hex Hd. Bolt	16
12	2508	Hex Nut	16
13	2763	Lockwasher	16



Note:
See C-16757
instead for
at least (2) of
the 1990 CP m/c.s.

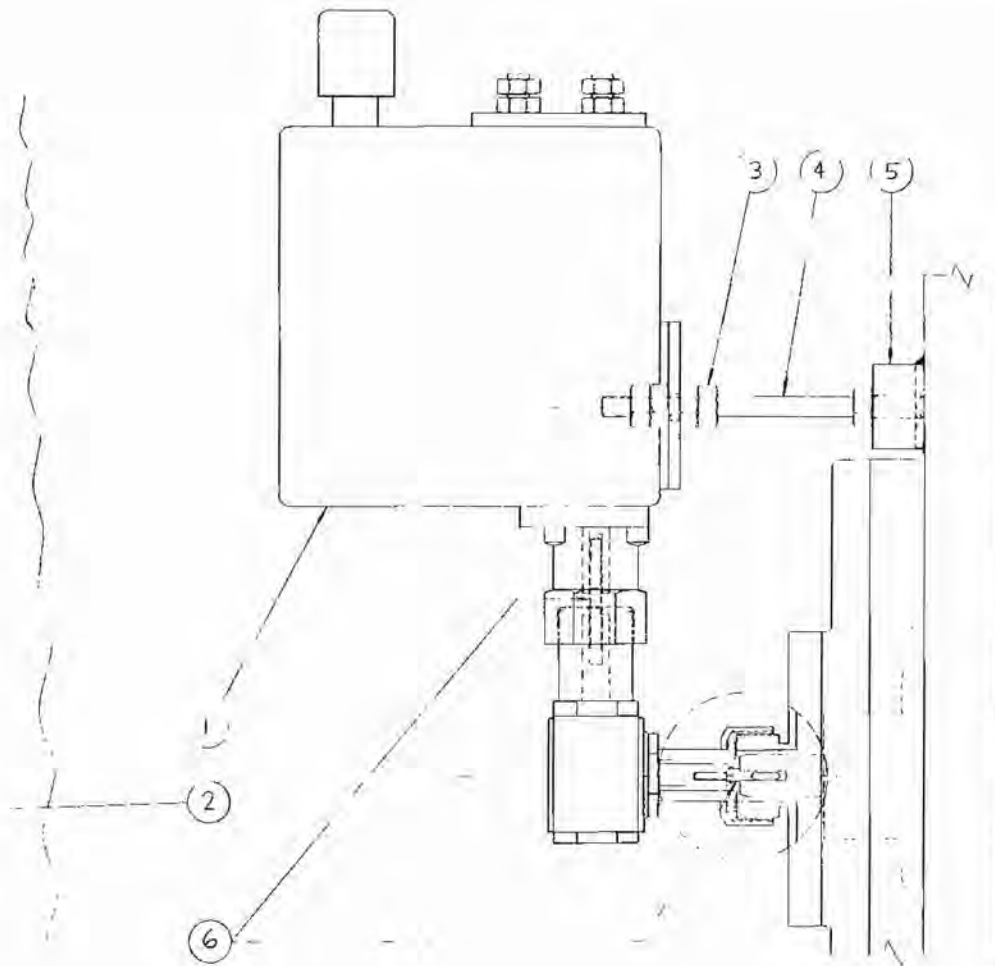
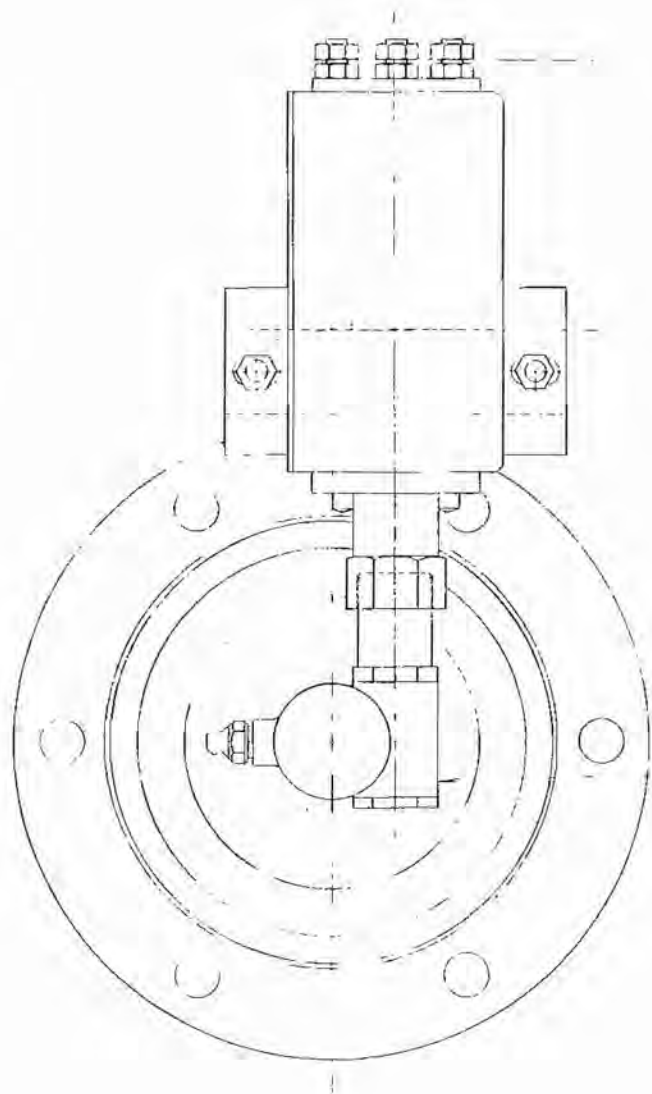
NOTE:
1. FOR MACHINES BUILT:
PRIOR JANUARY 1981 USE PART D-16071
AFTER DECEMBER 1980 USE PART D-16191
2. ITEM 9 USED FOR MACHINES BUILT PRIOR JAN 1983
ITEM 15 IS USED FOR MACHINES BUILT AFTER DEC 1982

REVISIONS			BERT PYKE LTD		
NO	DATE	BY	COUNTERSHAFT ASSEMBLY		
1	NOV. 80	SP			
2	DEC. 81	SP			
3			Drawn by	F.O.	Scale
4			Chk'd	SP	Date MAR 22-79
5			Transd	App'd	C/16052

18/20 TON CRANE
COUNTERSHAFT ASSEMBLY

DRAWINGC-16052QUANTITY

<u>NUMBER</u>	<u>PART NUMBER</u>	<u>NAME</u>	
1	D-16071	Gear 49T	1
2	C-16072	Pinion 23T	1
3	C-16075	Gear 45T	1
4	A-16073	Bearing Spacer - long	1
5	A-16074	Bearing Spacer - short	1
6	D-16070	Countershaft Spec.	1
7	D-16070-2	Roller Bearing	2
8	D-16070-1	Roller Bearing	2
9	C-15052-9	Retaining Ring	1
10	D-16070-5	Washer (thin)	2
11	D-16070-4	Washer (thick)	6
12	D-16070-3	Needle Bearing	4
13	9500	Clutch	1
14	C-16052-14	Piston Ring	2
15	A-16190	Spacer	1



UNLESS OTHERWISE SPECIFIED MACHINED SURFACE FINISH FRACTIONAL $\pm 1/32$ DECIMAL ± 0.010 ANGULAR $\pm 1/2^\circ$ CONCENTRIC 0.05 TIR PARALLEL 0.03 PER INCH SQUARE 0.03 PER INCH DO NOT SCALE DRAWING	ASSY	E-22046	MATERIAL	WEIGHT	SCALE
	BERT PYKE LTD.			DRN. S WARD	DATE 83 08 18
	185 HILLCROFT ST., GOSHAWK, ONT. L1G 7J6			CHD.	DATE
	TITLE	18-TON CRANE SHIFTING CONTROL ASS'Y	PART NO.	C-22145	

POM 414-110P
1-11-83

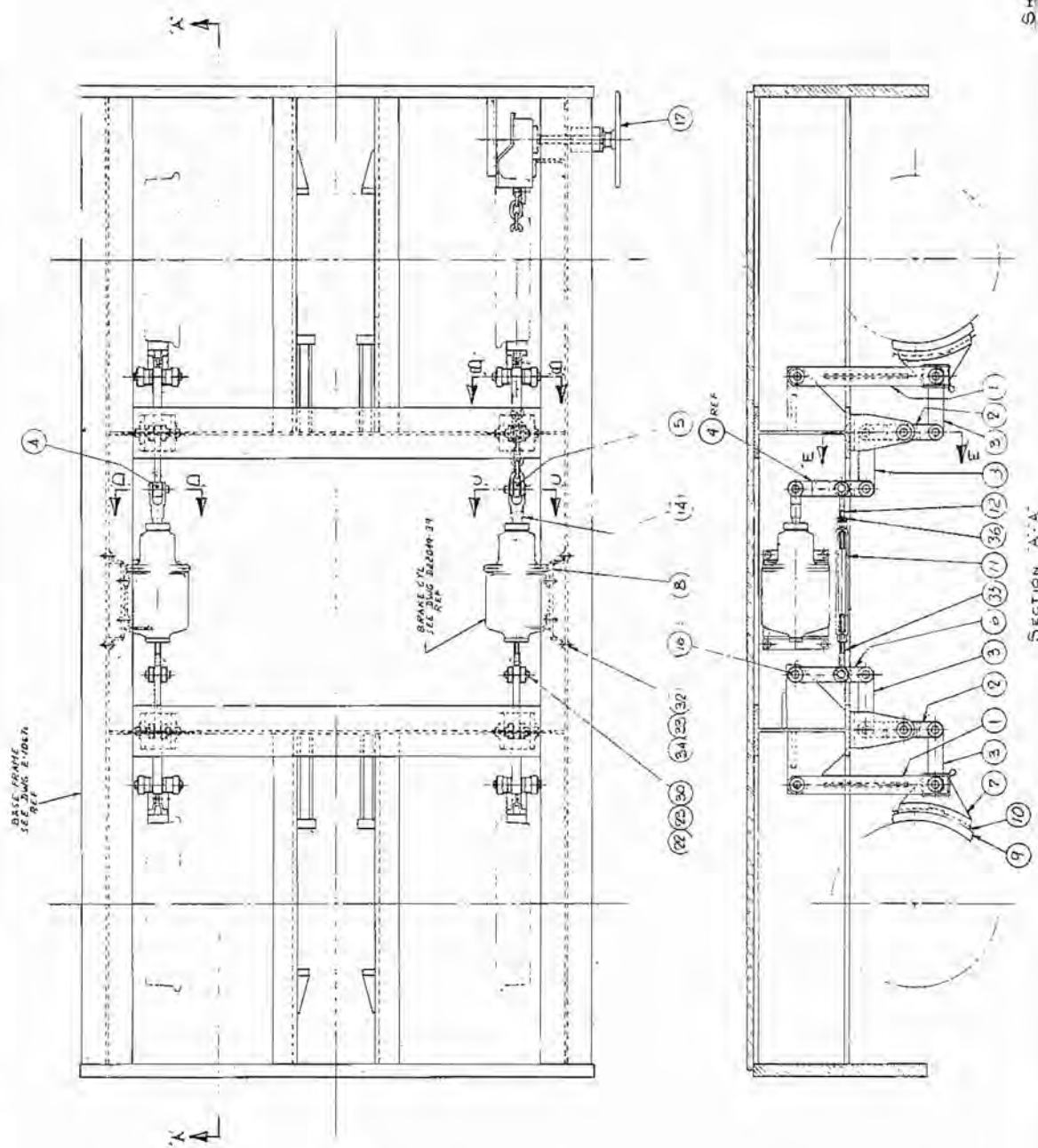
18/20 TON CRANE
SHIFTING CONTROL ASSEMBLY

DRAWING
C-22145

<u>NUMBER</u>	<u>PART NUMBER</u>	<u>NAME</u>	<u>QUANTITY</u>
1	8645	Speed Switch	1
2	8644	Adaptor	1
3	2502	Hex Nut	10
4	C-22145-4	Stud	2
5	A-22146	Boss	1
6	8665	Drive Tip	2

INVOICES		BRT PYKE LTD.	
NO	DATE	BY	
1	151		
2			
3			
4			
5			
6			
7			
8			
9			
10			
11			
12			
13			
14			
15			
16			
17			
18			
19			
20			
21			
22			
23			
24			
25			
26			
27			
28			
29			
30			
31			
32			
33			
34			
35			
36			
37			
38			
39			
40			
41			
42			
43			
44			
45			
46			
47			
48			
49			
50			
51			
52			
53			
54			
55			
56			
57			
58			
59			
60			
61			
62			
63			
64			
65			
66			
67			
68			
69			
70			
71			
72			
73			
74			
75			
76			
77			
78			
79			
80			
81			
82			
83			
84			
85			
86			
87			
88			
89			
90			
91			
92			
93			
94			
95			
96			
97			
98			
99			
100			

SHEET 1 OF 2



18/20 TON CRANEDRAWINGBRAKE ASSEMBLYD-10711

<u>NUMBER</u>	<u>PART NUMBER</u>	<u>NAME</u>	<u>QUANTITY</u>
1	B-10713	Swing Bracket	4
2	B-10714	Pivot Bracket	4
3	A-10715	Link Plate	4
4	B-10716	Control Bracket	1
5	B-10717	Control Bracket	1
6	B-10718	Control Bracket	2
7	D-10712	Brake Head	4
8	B-10721	Support Bracket	2
9	4441	Brake Shoes	4
10	4442	Lock Keys	4
11	4503	Turnbuckle	2
12	B-22095-1	Rod End (R.H.)	2
13	A-22183	Bushing	4
14	4434	Push Rod	2
15			
16	A-22182	Bushing	10
17	4435	Hand Brake	1
18			
19			
20	6975	Spacer	8
21	5006-4	Pin	8
22	2718	Washer	52
23	2819	Cotter Pin	52
24			
25	6976	Spacer	4
26	2716	Washer	2
27	5164	Pin	4
28	1843	Set Screw	4
29			
30	5006-5	Pin	14
31	5006-6	Pin	4
32	0887	Hex Hd. Screw	16
33	2516	Hex Nut	16
34	2768	Lockwasher	16
35	B-22095-2	Rod End (L.H.)	2
36	2566	Jam Nut	2

18/20 TON CRANE
ENGINE COMPARTMENT ASSEMBLY

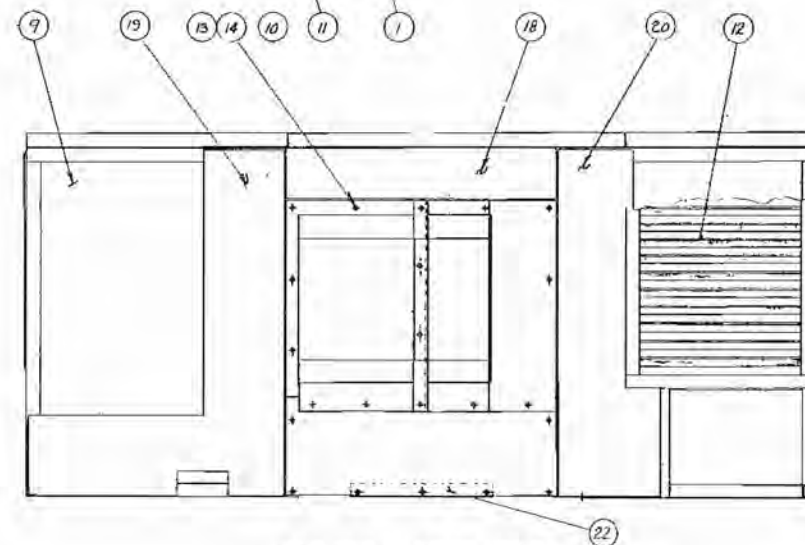
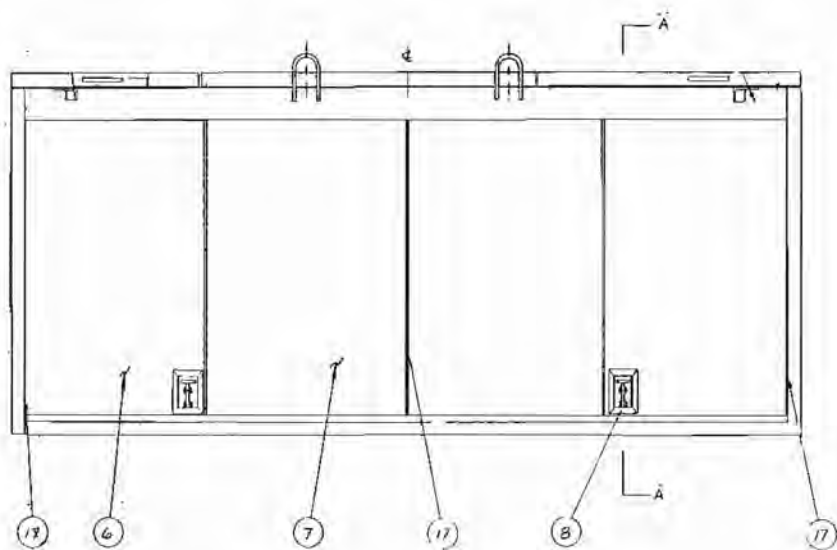
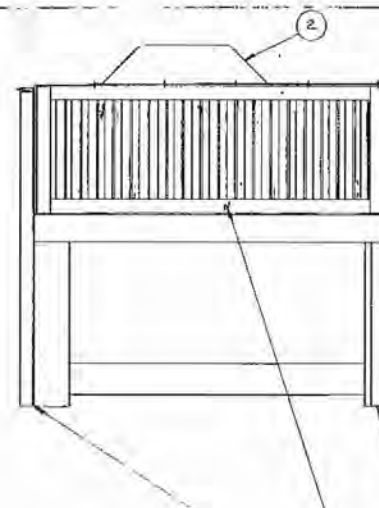
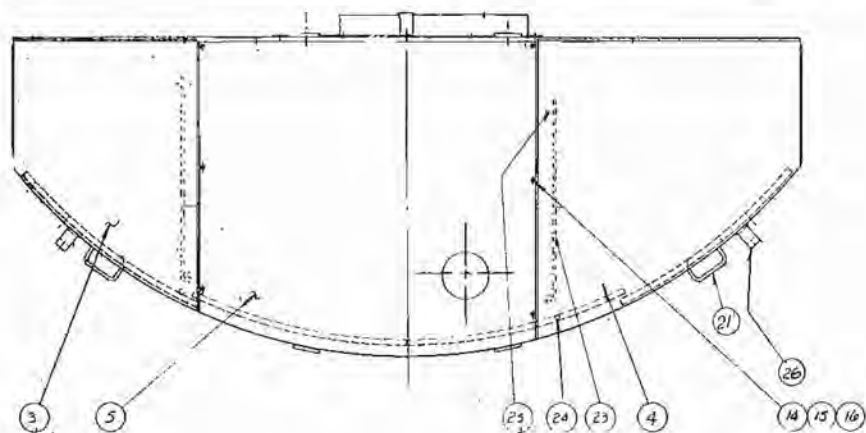
DRAWINGE-22104

<u>NUMBER</u>	<u>PART NUMBER</u>	<u>NAME</u>	<u>QUANTITY</u>
1	D-22013	Compressor Assembly	1
2	D-22102	Engine Assembly	1
3	C-22101-2	Filter Bracket	1
4	A-22142	Cover	1
5	8255	Inlet Hood	1
6	8308	Mounting Band	2
7	8052	Air Cleaner	1
8	C-22098-1-2-3	Muffler Support	1
9	C-22098-4-5-6	Muffler Support	1
10	8101	Muffler	1
11	8311	Muffler Clamp	1
12	E-22104-12	Flex Tube	1
13	B-22158	Elbow	1
14	B-22240	Rad Seal Kit	
15	D-22028	Engine Cover	1
16	C-22101-4	Bracket	1
17	8252	Rain Cap	1
18	2187	Mach. Screw	6
19	2500-1	Nut	6
20	2758	Lockwasher	6
21	8160	90° Elbow	1
22	8158	90° Elbow	1
23	8159	Sleeve	1
24	E-22104-24	Tube	1
25	3869	Clamp	2
26	3860	Clamp	4
27	0331	Hex Bolt	8
28	2506	Nut	8
29	2762	Lockwasher	8
30	2704	Flatwasher	8
31	0197	Hex Bolt	4
32	2504	Nut	4
33	2761	Lockwasher	4
34	8310	Clamp	2
35	C-10289	Plug Box	

<u>18/20 TON CRANE</u>			<u>DRAWING</u>
<u>ENGINE ASSEMBLY</u>			<u>D-22102</u>
<u>6V353T (TURBO)</u>			
<u>NUMBER</u>	<u>PART NUMBER</u>	<u>NAME</u>	<u>QUANTITY</u>
1	D-22017	Engine Frame	1
2	D-22018-1-3	Mounting Bracket	2
3	D-22018-4-5	Engine Mount	4
4	D-22108-1	Radiator Bracket	1
5	D-22018-6	Overload Washer	4
6	D-22018-7	Rebound Washer	4
7	C-10238	Comp. Bracket	1
8	D-22108-3	Cooler Bracket	1
9	A-22144	Bracket	2
10	C-22101-1	Oil Filter Bracket	1
11	C-22101-3	Hyd. Filter Bracket	1
12	A-22097	Spacer	1
13	D-22019-9	Flat	3
14	D-22108-4	Bracket	2
15	8362	Metacone	4
16	4129	Bearing	1
17	8042	Engine	1
18	9501	Four pump drive	1
19	0773	Hex Hd. Bolt	8
20	0825	Hex Hd. Bolt	4
21	0885	Hex Hd. Bolt	4
22	0567	Hex Hd. Bolt	10
23	0327	Hex Hd. Bolt	22
24	0379	Hex Hd. Bolt	2
25	0323	Hex Hd. Bolt	5
26	0559	Hex Hd. Bolt	10
27	0103	Hex Hd. Bolt	8
28	0071	Hex Hd. Bolt	14
29	2514	Nut	4
30	2516	Nut	4
31	2510	Nut	10
32	2506	Nut	54
33	2502	Nut	22
34	2766	Washer	12

18/20 TON CRANEENGINE ASSEMBLY6V353T (Turbo)DRAWINGD-22102

<u>NUMBER</u>	<u>PART NUMBER</u>	<u>NAME</u>	<u>QUANTITY</u>
35	2768	Washer	4
36	2764	Washer	22
37	2762	Washer	54
38	2760	Washer	22
39	3785	Clamp	4
40	2703	Washer	8
41	B-22217	Spacer	1
42	0583	Hex Head Bolt	2
43	C-22272	Shroud Extension	1



BACK VIEW OF ENGINE COVER

KEY	
3	24

UNLESS OTHERWISE SPECIFIED
 MATERIALS SHOWN IN PARENTHESES
 FINISHES: A. 240
 SURFACES: A. 240
 DIMENSIONS: 1/8" DIA.
 FINISHES: 1/8" DIA.
 DIMENSIONS: 1/8" DIA.
 FINISHES: 1/8" DIA.
 DIMENSIONS: 1/8" DIA.

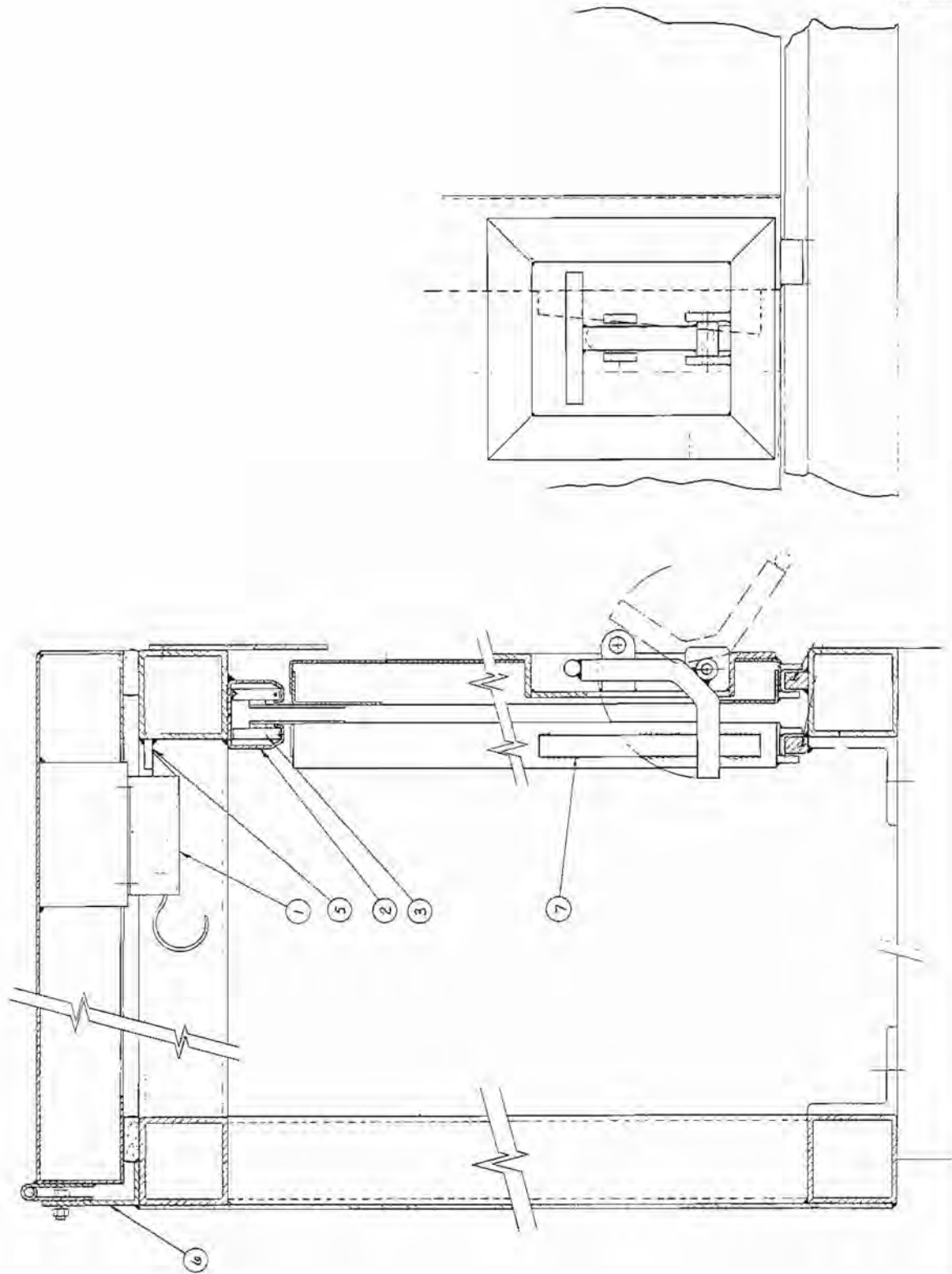
91 PROD.
 E22104
 BERT PYKE LTD.
 18 TON CRANE
 ENGINE COVER ASSEMBLY
 D2202B

18/20 TON CRANE
ENGINE COVER ASSEMBLY

DRAWING
D-22028

<u>NUMBER</u>	<u>PART NUMBER</u>	<u>NAME</u>	<u>QUANTITY</u>
1	D-22023	Frame	1
2	D-22022	Inspection Cover	1
3	D-22025-1	Lid	1
4	D-22025-3	Lid	1
5	D-22025-2	Cover	1
6	D-22025-4	Door	2
7	D-22025-5	Door	2
8	C-22030	Door Lock	2
9	D-22152-1	Louver	1
10	D-22028-10	Weather Strip	As req'd
11	D-22039-1	Louver	2
12	D-22039-2	Louver	1
13	D-22028-13	Bolt	16
14	D-22028-14	Washer	20
15	D-22028-15	Bolt	7
16	D-22028-16	Nut	7
17	D-22028-17	Weatherstrip	
18	D-22028-18	Sheet	1
19	D-22027-2	Sheet	1
20	D-22027-1	Sheet	1
21	D-22024-15	Handle	2
22	D-22024-14	Angle	1
23	B-22103	Lid Support	2
24	D-22028-24	Pipe	2
25	D-22028-25	Clip	2
26	A-22178	Bracket	2

BERT PYKE LTD	
STEEL CRANE SECTION THROUGH DRAIN COVER	
PROJECT	EQ
DATE	10/1/78
BY	1022029
CHECKED	
APPROVED	



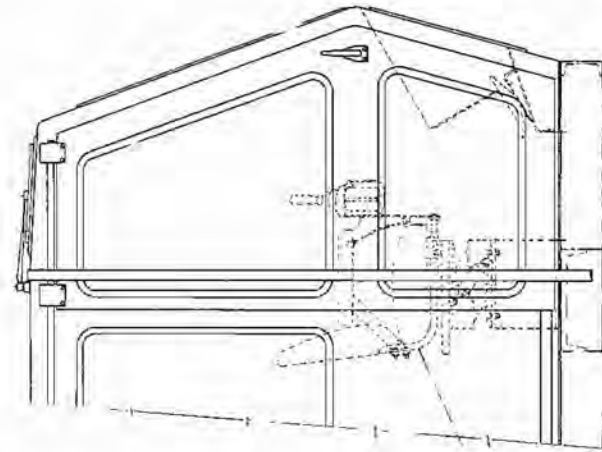
18/20 TON CRANE
ENGINE COVER SECTION ASSEMBLY

DRAWING
D-22029

<u>NUMBER</u>	<u>PART NUMBER</u>	<u>NAME</u>	<u>QUANTITY</u>
1	D-22029-1	Latch Bolt	3
2	D-22029-2	Track	1
3	D-22029-3	Hanger	8
4			
5	D-22029-5	Flat	3
6	D-22029-6	Angle	1
7	D-22029-7	Flat	2

18/20 TON CRANEDRAWINGRADIATOR SEAL KIT ASSEMBLYD-22240

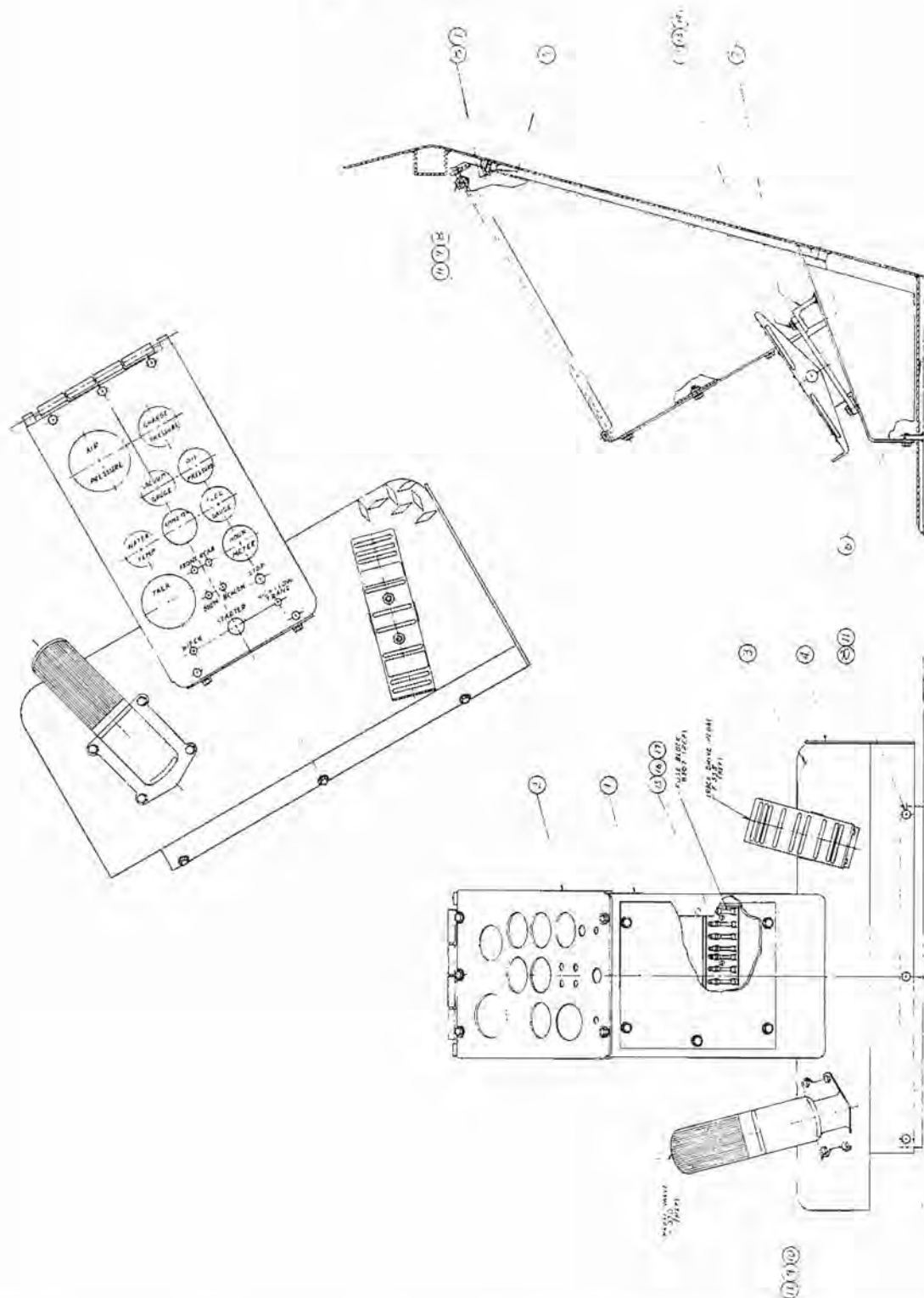
<u>NUMBER</u>	<u>PART NUMBER</u>	<u>NAME</u>	<u>QUANTITY</u>
1	A-22242	Rubber Cover	1
2	A-22241	Rubber Cover	1
3	A-22244	Rubber Cover	1
4	A-22243	Rubber Cover	1
5	D-22240-5	Insulation	1
6	0327	Hex Bolt	17
7	0331	Hex Bolt	4
8	2753	Fender Washer	15
9	2704	Flat Washer	6
10	2745	Bevel Washer	4
11	2506	Hex Nut	9



VIEW WITH AIR SUSPENSION SEAT

[illegible]

<u>18/20 TON CRANE</u>			<u>DRAWING</u>
<u>CAB ASSEMBLY</u>			<u>D-22167</u>
<u>NUMBER</u>	<u>PART NUMBER</u>	<u>NAME</u>	<u>QUANTITY</u>
1	D-10744	Cab Fabrication	1
2	D-22189	Seat Assembly	1
3	E-22106	Control Assembly	1
4	B-22177-1	Work Light Bracket	2
5	A-22192	Flat	1
6	G-091	West Coast Mirror	1
7	G-105	Mirror Bracket	1
8	K-009	Rubber Strip	1
9	D-008	Insulation	As req'd
10	0331	Hex Head Screw	8
11	2506	Hex Nut	8
12	2762	Lockwasher	8
13	A-22193	Flat	1
14			
15			
16			
17			
18	D-22168	Optional Suspension Seat Assembly	1
19	D-22185	Optional Suspension Seat Assembly	1

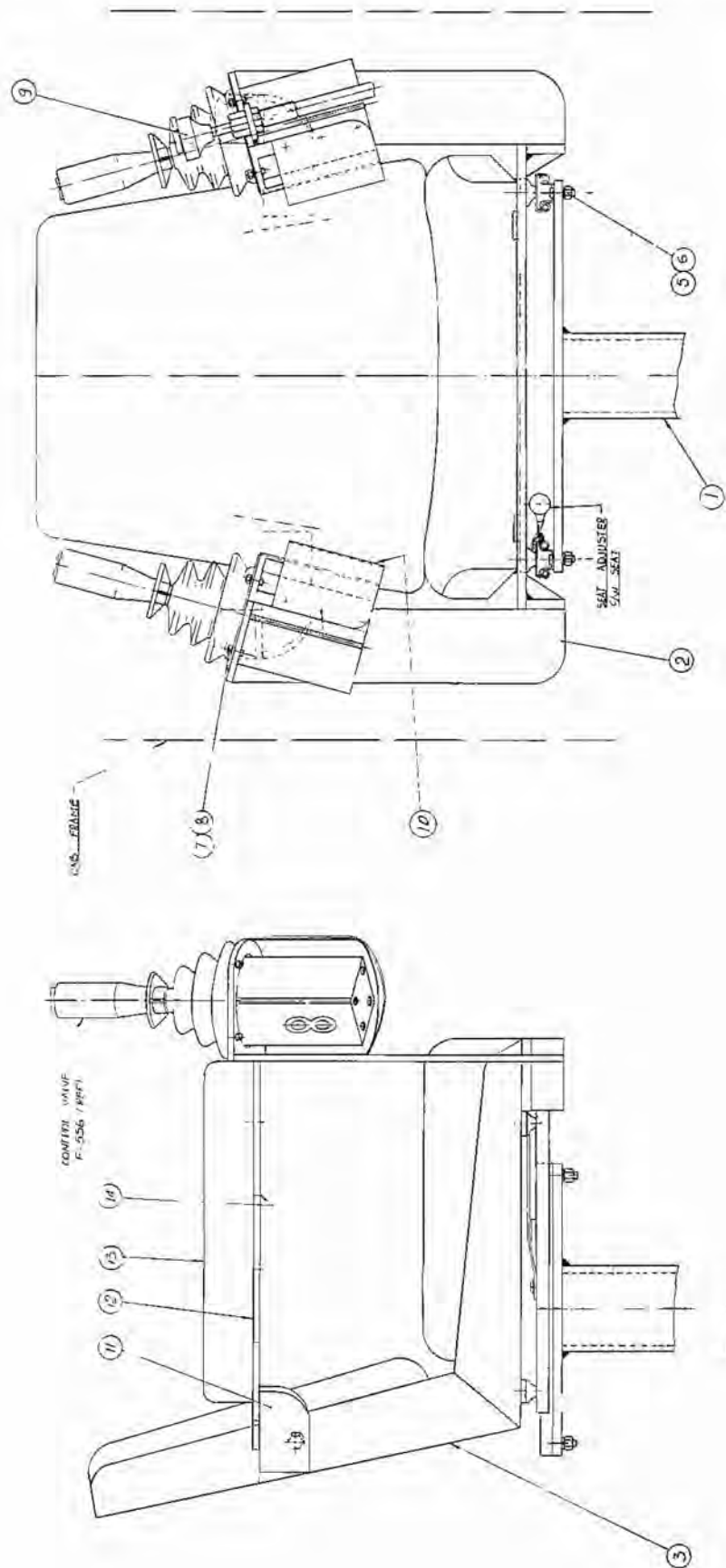


BERT PYKE LTD.	
"CONTROL LAYOUT"	
IN FOR	
7-27106	
DATE	1954
BY	W. J. B. L.
CHECKED	W. J. B. L.
APPROVED	W. J. B. L.
BY	W. J. B. L.
DATE	1954

18/20 TON CRANE
CONTROL LAYOUT ASSEMBLY

DRAWING
E-22106

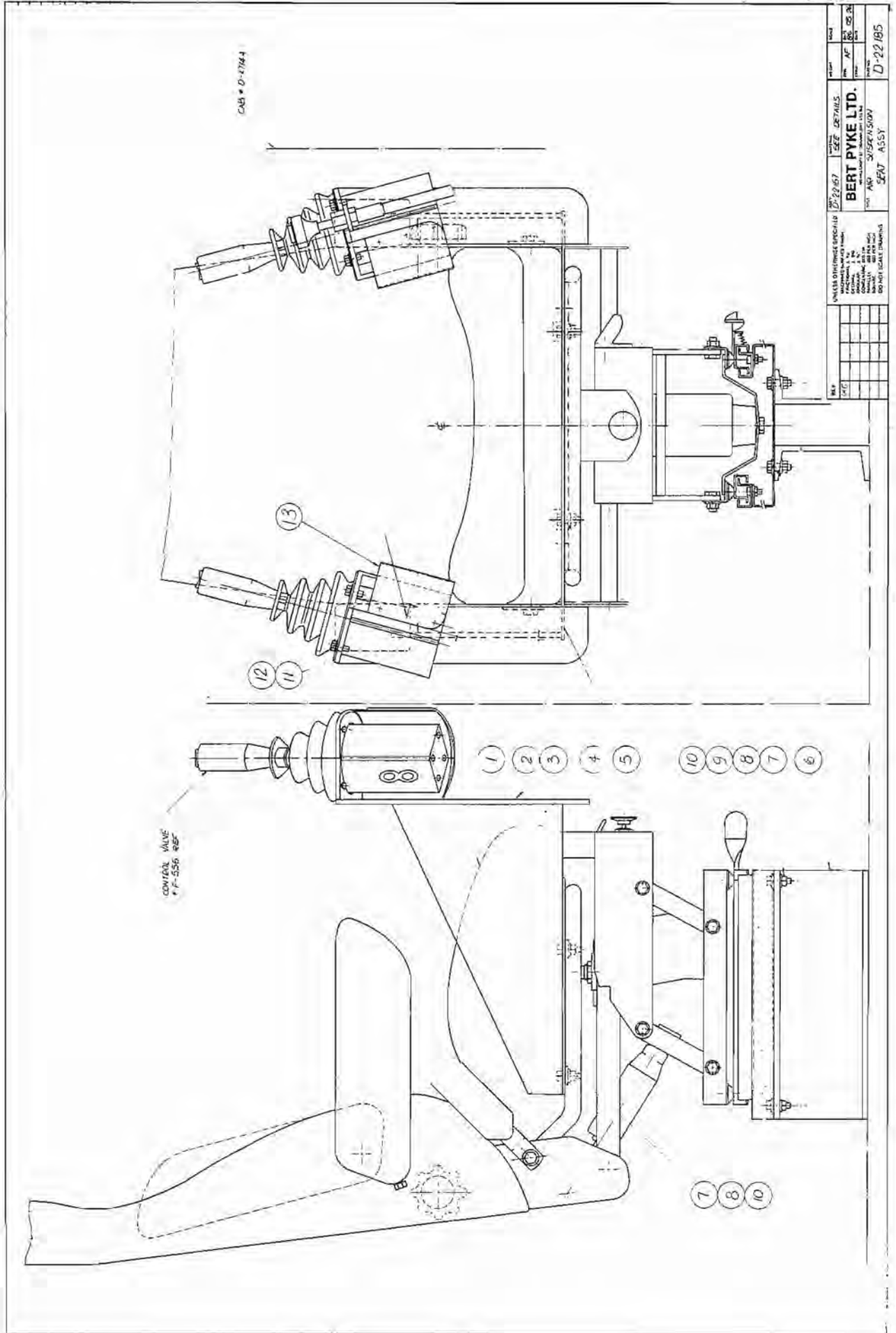
<u>NUMBER</u>	<u>PART NUMBER</u>	<u>NAME</u>	<u>QUANTITY</u>
1	D-10754	Housing	1
2	C-10755	Panel	1
3	C-22099-1	Floor Plate	1
4	C-22099-2	Floor Plate End	1
5	B-22107-1	Mount	1
6	B-22107-2	Mount	4
7	B-22107-3	Angle	1
8	0055	Bolt	21
9	2502	Nut	15
10	0069	Bolt	4
11	2760	Lockwasher	25
12	0187	Bolt	4
13	2504	Nut	2
14	2703	Lockwasher	4
15	2187	Machine Screw	4
16	2758	Lockwasher	4
17	2500-1	Nut	4
18	A-22195	Mount	3



REV.	185	186	187	188	189	190	191	192	193	194	195	196	197	198	199	200	201	202	203	204	205	206	207	208	209	210	211	212	213	214	215	216	217	218	219	220	221	222	223	224	225	226	227	228	229	230	231	232	233	234	235	236	237	238	239	240	241	242	243	244	245	246	247	248	249	250	251	252	253	254	255	256	257	258	259	260	261	262	263	264	265	266	267	268	269	270	271	272	273	274	275	276	277	278	279	280	281	282	283	284	285	286	287	288	289	290	291	292	293	294	295	296	297	298	299	300	301	302	303	304	305	306	307	308	309	310	311	312	313	314	315	316	317	318	319	320	321	322	323	324	325	326	327	328	329	330	331	332	333	334	335	336	337	338	339	340	341	342	343	344	345	346	347	348	349	350	351	352	353	354	355	356	357	358	359	360	361	362	363	364	365	366	367	368	369	370	371	372	373	374	375	376	377	378	379	380	381	382	383	384	385	386	387	388	389	390	391	392	393	394	395	396	397	398	399	400	401	402	403	404	405	406	407	408	409	410	411	412	413	414	415	416	417	418	419	420	421	422	423	424	425	426	427	428	429	430	431	432	433	434	435	436	437	438	439	440	441	442	443	444	445	446	447	448	449	450	451	452	453	454	455	456	457	458	459	460	461	462	463	464	465	466	467	468	469	470	471	472	473	474	475	476	477	478	479	480	481	482	483	484	485	486	487	488	489	490	491	492	493	494	495	496	497	498	499	500	501	502	503	504	505	506	507	508	509	510	511	512	513	514	515	516	517	518	519	520	521	522	523	524	525	526	527	528	529	530	531	532	533	534	535	536	537	538	539	540	541	542	543	544	545	546	547	548	549	550	551	552	553	554	555	556	557	558	559	560	561	562	563	564	565	566	567	568	569	570	571	572	573	574	575	576	577	578	579	580	581	582	583	584	585	586	587	588	589	590	591	592	593	594	595	596	597	598	599	600	601	602	603	604	605	606	607	608	609	610	611	612	613	614	615	616	617	618	619	620	621	622	623	624	625	626	627	628	629	630	631	632	633	634	635	636	637	638	639	640	641	642	643	644	645	646	647	648	649	650	651	652	653	654	655	656	657	658	659	660	661	662	663	664	665	666	667	668	669	670	671	672	673	674	675	676	677	678	679	680	681	682	683	684	685	686	687	688	689	690	691	692	693	694	695	696	697	698	699	700	701	702	703	704	705	706	707	708	709	710	711	712	713	714	715	716	717	718	719	720	721	722	723	724	725	726	727	728	729	730	731	732	733	734	735	736	737	738	739	740	741	742	743	744	745	746	747	748	749	750	751	752	753	754	755	756	757	758	759	760	761	762	763	764	765	766	767	768	769	770	771	772	773	774	775	776	777	778	779	780	781	782	783	784	785	786	787	788	789	790	791	792	793	794	795	796	797	798	799	800	801	802	803	804	805	806	807	808	809	810	811	812	813	814	815	816	817	818	819	820	821	822	823	824	825	826	827	828	829	830	831	832	833	834	835	836	837	838	839	840	841	842	843	844	845	846	847	848	849	850	851	852	853	854	855	856	857	858	859	860	861	862	863	864	865	866	867	868	869	870	871	872	873	874	875	876	877	878	879	880	881	882	883	884	885	886	887	888	889	890	891	892	893	894	895	896	897	898	899	900	901	902	903	904	905	906	907	908	909	910	911	912	913	914	915	916	917	918	919	920	921	922	923	924	925	926	927	928	929	930	931	932	933	934	935	936	937	938	939	940	941	942	943	944	945	946	947	948	949	950	951	952	953	954	955	956	957	958	959	960	961	962	963	964	965	966	967	968	969	970	971	972	973	974	975	976	977	978	979	980	981	982	983	984	985	986	987	988	989	990	991	992	993	994	995	996	997	998	999	1000	1001	1002	1003	1004	1005	1006	1007	1008	1009	1010	1011	1012	1013	1014	1015	1016	1017	1018	1019	1020	1021	1022	1023	1024	1025	1026	1027	1028	1029	1030	1031	1032	1033	1034	1035	1036	1037	1038	1039	1040	1041	1042	1043	1044	1045	1046	1047	1048	1049	1050	1051	1052	1053	1054	1055	1056	1057	1058	1059	1060	1061	1062	1063	1064	1065	1066	1067	1068	1069	1070	1071	1072	1073	1074	1075	1076	1077	1078	1079	1080	1081	1082	1083	1084	1085	1086	1087	1088	1089	1090	1091	1092	1093	1094	1095	1096	1097	1098	1099	1100	1101	1102	1103	1104	1105	1106	1107	1108	1109	1110	1111	1112	1113	1114	1115	1116	1117	1118	1119	1120	1121	1122	1123	1124	1125	1126	1127	1128	1129	1130	1131	1132	1133	1134	1135	1136	1137	1138	1139	1140	1141	1142	1143	1144	1145	1146	1147	1148	1149	1150	1151	1152	1153	1154	1155	1156	1157	1158	1159	1160	1161	1162	1163	1164	1165	1166	1167	1168	1169	1170	1171	1172	1173	1174	1175	1176	1177	1178	1179	1180	1181	1182	1183	1184	1185	1186	1187	1188	1189	1190	1191	1192	1193	1194	1195	1196	1197	1198	1199	1200	1201	1202	1203	1204	1205	1206	1207	1208	1209	1210	1211	1212	1213	1214	1215	1216	1217	1218	1219	1220	1221	1222	1223	1224	1225	1226	1227	1228	1229	1230	1231	1232	1233	1234	1235	1236	1237	1238	1239	1240	1241	1242	1243	1244	1245	1246	1247	1248	1249	1250	1251	1252	1253	1254	1255	1256	1257	1258	1259	1260	1261	1262	1263	1264	1265	1266	1267	1268	1269	1270	1271	1272	1273	1274	1275	1276	1277	1278	1279	1280	1281	1282	1283	1284	1285	1286	1287	1288	1289	1290	1291	1292	1293	1294	1295	1296	1297	1298	1299	1300	1301	1302	1303	1304	1305	1306	1307	1308	1309	1310	1311	1312	1313	1314	1315	1316	1317	1318	1319	1320	1321	1322	1323	1324	1325	1326	1327	1328	1329	1330	1331	1332	1333	1334	1335	1336	1337	1338	1339	1340	1341	1342	1343	1344	1345	1346	1347	1348	1349	1350	1351	1352	1353	1354	1355	1356	1357	1358	1359	1360	1361	1362	1363	1364	1365	1366	1367	1368	1369	1370	1371	1372	1373	1374	1375	1376	1377	1378	1379	1380	1381	1382	1383	1384	1385	1386	1387	1388	1389	1390	1391	1392	1393	1394	1395	1396	1397	1398	1399	1400	1401	1402	1403	1404	1405	1406	1407	1408	1409	1410	1411	1412	1413	1414	1415	1416	1417	1418	1419	1420	1421	1422	1423	1424	1425	1426	1427	1428	1429	1430	1431	1432	1433	1434	1435	1436	1437	1438	1439	1440	1441	1442	1443	1444	1445	1446	1447	1448	1449	1450	1451	1452	1453	1454	1455	1456	1457	1458	1459	1460	1461	1462	1463	1464	1465	1466	1467	1468	1469	1470	1471	1472	1473	1474	1475	1476	1477	1478	1479	1480	1481	1482	1483	1484	1485	1486	1487	1488	1489	1490	1491	1492	1493	1494	1495	1496	1497	1498	1499	1500	1501	1502	1503	1504	1505	1506	1507	1508	1509	1510	1511	1512	1513	1514	1515	1516	1517	1518	1519	1520	1521	1522	1523	1524	1525	1526	1527	1528	1529	1530	1531	1532	1533	1534	1535	1536	1537	1538	1539	1540	1541	1542	1543	1544	1545	1546	1547	1548	1549	1550	1551	1552	1553	1554	1555	1556	1557	1558	1559	1560	1561	1562	1563	1564	1565	1566	1567	1568	1569	1570	1571	1572	1573	1574	1575	1576	1577	1578	1579	1580	1581	1582	1583	1584	1585	1586	1587	1588	1589	1590	1591	1592	1593	1594	1595	1596	1597	1598	1599	1600	1601	1602	1603	1604	1605	1606	1607	1608	1609	1610	1611	1612	1613	1614	1615	1616	1617	1618	1619	1620	1621	1622	1623
------	-----	-----	-----	-----	-----	-----	-----	-----	-----	-----	-----	-----	-----	-----	-----	-----	-----	-----	-----	-----	-----	-----	-----	-----	-----	-----	-----	-----	-----	-----	-----	-----	-----	-----	-----	-----	-----	-----	-----	-----	-----	-----	-----	-----	-----	-----	-----	-----	-----	-----	-----	-----	-----	-----	-----	-----	-----	-----	-----	-----	-----	-----	-----	-----	-----	-----	-----	-----	-----	-----	-----	-----	-----	-----	-----	-----	-----	-----	-----	-----	-----	-----	-----	-----	-----	-----	-----	-----	-----	-----	-----	-----	-----	-----	-----	-----	-----	-----	-----	-----	-----	-----	-----	-----	-----	-----	-----	-----	-----	-----	-----	-----	-----	-----	-----	-----	-----	-----	-----	-----	-----	-----	-----	-----	-----	-----	-----	-----	-----	-----	-----	-----	-----	-----	-----	-----	-----	-----	-----	-----	-----	-----	-----	-----	-----	-----	-----	-----	-----	-----	-----	-----	-----	-----	-----	-----	-----	-----	-----	-----	-----	-----	-----	-----	-----	-----	-----	-----	-----	-----	-----	-----	-----	-----	-----	-----	-----	-----	-----	-----	-----	-----	-----	-----	-----	-----	-----	-----	-----	-----	-----	-----	-----	-----	-----	-----	-----	-----	-----	-----	-----	-----	-----	-----	-----	-----	-----	-----	-----	-----	-----	-----	-----	-----	-----	-----	-----	-----	-----	-----	-----	-----	-----	-----	-----	-----	-----	-----	-----	-----	-----	-----	-----	-----	-----	-----	-----	-----	-----	-----	-----	-----	-----	-----	-----	-----	-----	-----	-----	-----	-----	-----	-----	-----	-----	-----	-----	-----	-----	-----	-----	-----	-----	-----	-----	-----	-----	-----	-----	-----	-----	-----	-----	-----	-----	-----	-----	-----	-----	-----	-----	-----	-----	-----	-----	-----	-----	-----	-----	-----	-----	-----	-----	-----	-----	-----	-----	-----	-----	-----	-----	-----	-----	-----	-----	-----	-----	-----	-----	-----	-----	-----	-----	-----	-----	-----	-----	-----	-----	-----	-----	-----	-----	-----	-----	-----	-----	-----	-----	-----	-----	-----	-----	-----	-----	-----	-----	-----	-----	-----	-----	-----	-----	-----	-----	-----	-----	-----	-----	-----	-----	-----	-----	-----	-----	-----	-----	-----	-----	-----	-----	-----	-----	-----	-----	-----	-----	-----	-----	-----	-----	-----	-----	-----	-----	-----	-----	-----	-----	-----	-----	-----	-----	-----	-----	-----	-----	-----	-----	-----	-----	-----	-----	-----	-----	-----	-----	-----	-----	-----	-----	-----	-----	-----	-----	-----	-----	-----	-----	-----	-----	-----	-----	-----	-----	-----	-----	-----	-----	-----	-----	-----	-----	-----	-----	-----	-----	-----	-----	-----	-----	-----	-----	-----	-----	-----	-----	-----	-----	-----	-----	-----	-----	-----	-----	-----	-----	-----	-----	-----	-----	-----	-----	-----	-----	-----	-----	-----	-----	-----	-----	-----	-----	-----	-----	-----	-----	-----	-----	-----	-----	-----	-----	-----	-----	-----	-----	-----	-----	-----	-----	-----	-----	-----	-----	-----	-----	-----	-----	-----	-----	-----	-----	-----	-----	-----	-----	-----	-----	-----	-----	-----	-----	-----	-----	-----	-----	-----	-----	-----	-----	-----	-----	-----	-----	-----	-----	-----	-----	-----	-----	-----	-----	-----	-----	-----	-----	-----	-----	-----	-----	-----	-----	-----	-----	-----	-----	-----	-----	-----	-----	-----	-----	-----	-----	-----	-----	-----	-----	-----	-----	-----	-----	-----	-----	-----	-----	-----	-----	-----	-----	-----	-----	-----	-----	-----	-----	-----	-----	-----	-----	-----	-----	-----	-----	-----	-----	-----	-----	-----	-----	-----	-----	-----	-----	-----	-----	-----	-----	-----	-----	-----	-----	-----	-----	-----	-----	-----	-----	-----	-----	-----	-----	-----	-----	-----	-----	-----	-----	-----	-----	-----	-----	-----	-----	-----	-----	-----	-----	-----	-----	-----	-----	-----	-----	-----	-----	-----	-----	-----	-----	-----	-----	-----	-----	-----	-----	-----	-----	-----	-----	-----	-----	-----	-----	-----	-----	-----	-----	-----	-----	-----	-----	-----	-----	-----	-----	-----	-----	-----	-----	-----	-----	-----	-----	-----	-----	-----	-----	-----	-----	-----	-----	-----	-----	-----	-----	-----	-----	-----	-----	-----	-----	-----	-----	-----	-----	-----	-----	-----	-----	-----	-----	-----	-----	-----	-----	-----	-----	-----	-----	-----	-----	-----	-----	-----	-----	-----	-----	-----	-----	-----	-----	-----	-----	-----	-----	-----	-----	-----	-----	-----	-----	-----	-----	-----	-----	-----	-----	-----	-----	-----	-----	-----	-----	-----	-----	-----	-----	-----	-----	-----	-----	-----	-----	-----	-----	-----	-----	-----	-----	-----	-----	-----	-----	-----	-----	-----	-----	-----	-----	-----	-----	-----	-----	-----	-----	-----	-----	-----	-----	-----	-----	-----	-----	-----	-----	-----	-----	-----	-----	-----	-----	-----	-----	-----	-----	-----	-----	-----	-----	-----	-----	-----	-----	-----	-----	-----	-----	-----	-----	-----	-----	-----	-----	-----	-----	-----	-----	-----	-----	-----	-----	-----	-----	------	------	------	------	------	------	------	------	------	------	------	------	------	------	------	------	------	------	------	------	------	------	------	------	------	------	------	------	------	------	------	------	------	------	------	------	------	------	------	------	------	------	------	------	------	------	------	------	------	------	------	------	------	------	------	------	------	------	------	------	------	------	------	------	------	------	------	------	------	------	------	------	------	------	------	------	------	------	------	------	------	------	------	------	------	------	------	------	------	------	------	------	------	------	------	------	------	------	------	------	------	------	------	------	------	------	------	------	------	------	------	------	------	------	------	------	------	------	------	------	------	------	------	------	------	------	------	------	------	------	------	------	------	------	------	------	------	------	------	------	------	------	------	------	------	------	------	------	------	------	------	------	------	------	------	------	------	------	------	------	------	------	------	------	------	------	------	------	------	------	------	------	------	------	------	------	------	------	------	------	------	------	------	------	------	------	------	------	------	------	------	------	------	------	------	------	------	------	------	------	------	------	------	------	------	------	------	------	------	------	------	------	------	------	------	------	------	------	------	------	------	------	------	------	------	------	------	------	------	------	------	------	------	------	------	------	------	------	------	------	------	------	------	------	------	------	------	------	------	------	------	------	------	------	------	------	------	------	------	------	------	------	------	------	------	------	------	------	------	------	------	------	------	------	------	------	------	------	------	------	------	------	------	------	------	------	------	------	------	------	------	------	------	------	------	------	------	------	------	------	------	------	------	------	------	------	------	------	------	------	------	------	------	------	------	------	------	------	------	------	------	------	------	------	------	------	------	------	------	------	------	------	------	------	------	------	------	------	------	------	------	------	------	------	------	------	------	------	------	------	------	------	------	------	------	------	------	------	------	------	------	------	------	------	------	------	------	------	------	------	------	------	------	------	------	------	------	------	------	------	------	------	------	------	------	------	------	------	------	------	------	------	------	------	------	------	------	------	------	------	------	------	------	------	------	------	------	------	------	------	------	------	------	------	------	------	------	------	------	------	------	------	------	------	------	------	------	------	------	------	------	------	------	------	------	------	------	------	------	------	------	------	------	------	------	------	------	------	------	------	------	------	------	------	------	------	------	------	------	------	------	------	------	------	------	------	------	------	------	------	------	------	------	------	------	------	------	------	------	------	------	------	------	------	------	------	------	------	------	------	------	------	------	------	------	------	------	------	------	------	------	------	------	------	------	------	------	------	------	------	------	------	------	------	------	------	------	------	------	------	------	------	------	------	------	------	------	------	------	------	------	------	------	------	------	------	------	------	------	------	------	------	------	------	------	------	------	------	------	------	------	------	------	------	------	------	------	------	------	------	------	------	------	------	------	------	------	------	------	------	------	------	------	------	------	------	------	------	------	------	------	------	------	------	------	------	------	------	------	------	------	------	------	------	------	------	------	------	------	------	------	------	------	------	------	------	------	------	------	------	------	------	------	------	------	------	------	------	------	------	------	------	------	------

18/20 TON CRANEDRAWINGSEAT ASSEMBLYD-22189

<u>NUMBER</u>	<u>PART NUMBER</u>	<u>NAME</u>	<u>QUANTITY</u>
1	B-22200	Seat Post	1
2	D-22190	Hand Control	1
3	6045-1	Cushion Seat	1
4	0185	Hex Bolt	4
5	2761	Lockwasher	8
6	2504	hex Nut	4
7	0057	Hex Bolt	8
8	2762	Lockwasher	8
9	6046	Throttle Cable	1
10	D-22189-10	Guard	2
11	D-22189-11	Flat	2
12	D-22189-12	Flat	2
13	A-22173	Arm Rest	2
14	0006	Screw	8



18/20 TON CRANEOPTIONALAIR SUSPENSION SEAT ASSEMBLYDRAWINGD-22185

<u>NUMBER</u>	<u>PART NUMBER</u>	<u>NAME</u>	<u>QUANTITY</u>
1	6049-21	Air Suspension Seat	1
2	C-22187	Control Bracket (L.H.)	1
3	C-22188	Control Bracket (R.H.)	1
4	C22186-1	Plate	2
5	C-22186-2	Plate	1
6	D-22185-6	Channel	2
7	0195	Hex Bolt	8
8	2734	Flat Washer	8
9	2745	Bevel Washer	4
10	2504	Hex Nut	8
11	0059	Hex Bolt	8
12	2760	Lockwasher	8
13	D-22189-10	Guard	2

18/20 TON CRANE
MAIN BOOM ASSEMBLY

DRAWING
E-10729

<u>NUMBER</u>	<u>PART NUMBER</u>	<u>NAME</u>	<u>QUANTITY</u>
1	E-10681	Primary Boom	1
2	E-10684	Secondary Boom	1
3	E-10691	20 Ft. Boom Ext.	1
4	E-10689	10 Ft. Boom Ext.	1
5	D-10707	Hoist Sheave Block	1
6	D-10719	Hoist Assembly	1
7	E-10729-7	Socket Cable	2
8	E-10729-8	Socket Cable	2
9	E-10729-9	Socket Cable	2
10	4507-340	5/8 Dia. Cable	1
	4508-280	3/4 Dia. Cable	1
11	4507-240	5/8 Dia. Cable	1
	4508-200	3/4 Dia. Cable	1
12	4507-220	Cable	1
13	5179	Clevis Pin	14
14	C-10743	Pivot Pin	2
15	8556	Mag. Reel & Tagline	1
16	8557	Tube and Pulleys	1
17	D-10751	Inner Tube Stabilizer	2
18	D-10750	Outer Tube Stabilizer	2
19	0315	Hex Bolt	2
20	3785	Clamp	3
21	5006-19	Pin	4
22	5261	Hitch Pin	16
23	2658	Stover Nut	1
24	2762	Lockwasher	2
25	4509	Wire Rope Clip	3
26	4513	Ladder Hook	1
27	B-22105	Plate	1
28	4519	Crane Block for 5/8 Dia. Cable	1
	4531	Crane Block for 3/4 Dia. Cable	1
29	B-22100	Link for 5/8 Dia. Cable	1
	A-22169	Link for 3/4 Dia. Cable	1
30	4514	Wedge and socket for 5/8 Dia. Cable	2
	4517	Wedge and socket for 3/4 Dia. Cable	2
31	4518	Safety Hook	1
32	B-10736	Assembly pin	8
33	4520	Cold Shut Link	1

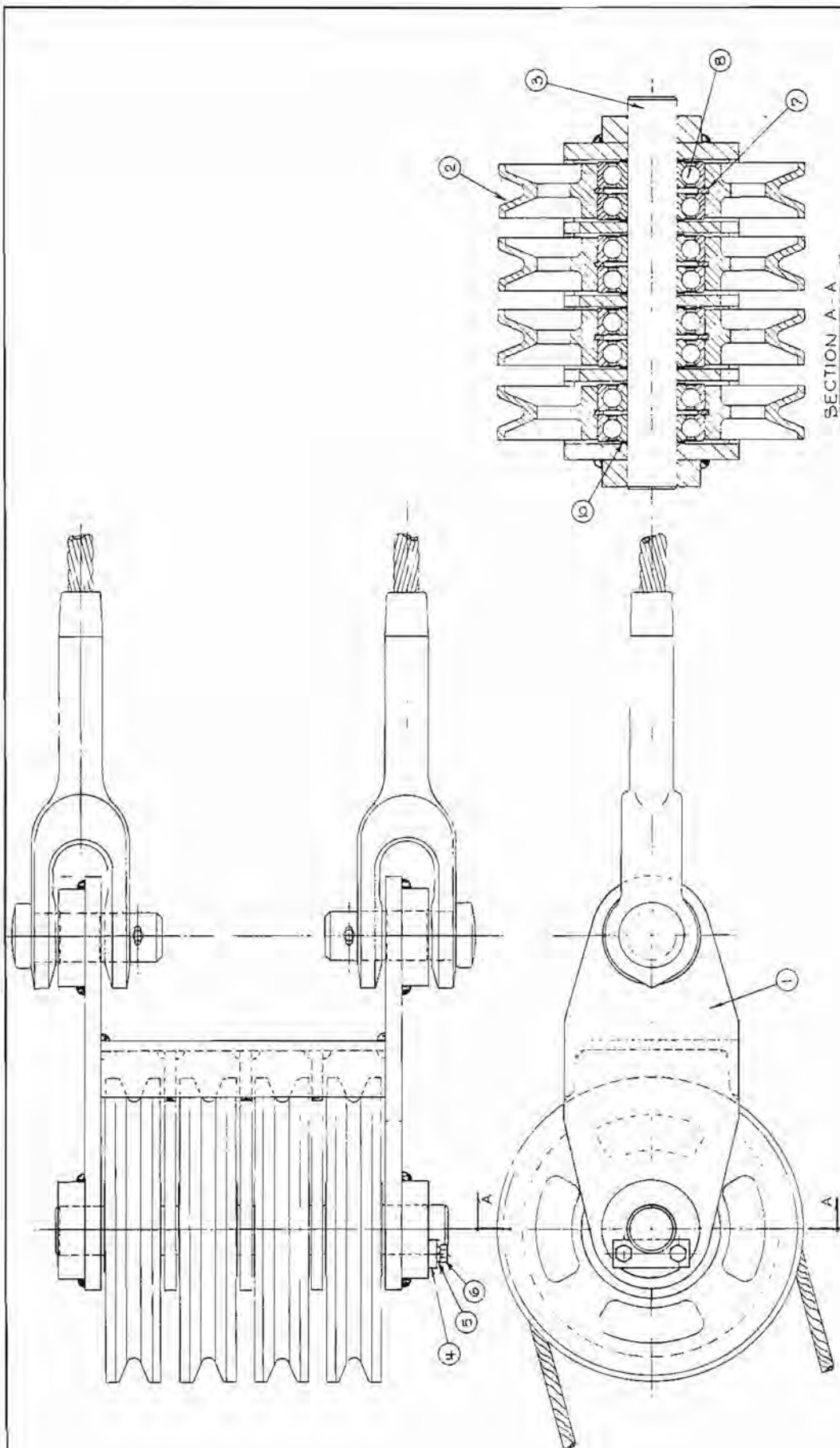
18/20 TON CRANE
MAIN BOOM ASSEMBLY

DRAWING
E-10729

<u>NUMBER</u>	<u>PART NUMBER</u>	<u>NAME</u>	<u>QUANTITY</u>
34	C-10776	Boom Angle Indicator	1
35	B-10688	Pin	1
36	0243	Pin	1
37	8559-60	Magnet Cable	1
38	D-10751-4	Stop Clamp	2
39	0825	Hex Bolt	8
40	2514	Hex Nut	12
41	2766	Lockwasher	8
42	2718	Washer	8
43	2819	Cotter Pin	8
44	E-10729-44	Chain	4
45	E-10729-45	Chain	4
46			
47	E-10729-47	Socket Cable	2
48	A-22234	Guide Bar	1

18/20 TON CRANEDRAWINGSHEAVE BLOCKD-10722

<u>NUMBER</u>	<u>PART NUMBER</u>	<u>NAME</u>	<u>QUANTITY</u>
1	C-10723	Sheave Block	1
2	B-10724	Sheave Pin	1
3	D-10686	Sheave	3
4	5200-3	Lock Plate	1
5	0323	Hex Bolt	2
6	2762	Lockwasher	2
7	0905	Hex Bolt	7
8	2768	Lockwasher	7
9	7612	Snap Ring	3
10	4200-5	Ball Bearing	6
11	A-10726	Spacing Washer	6
12	2670	Locknut	7
13	2740	Flat Washer	7
14	C-10838	Arm	1
15	5004-4	Pin	1
16	2818	Cotter Pin	2
17	4532	Thimble	1
18	4511	Wire Rope Clip	4



REVISIONS		DATE		BY		CHECKED		APPROVED	
1									
2									
3									
4									
5									
6									
7									
8									
9									
10									

BERT PYKE LTD.
HOIST SHEAVE BLOCK

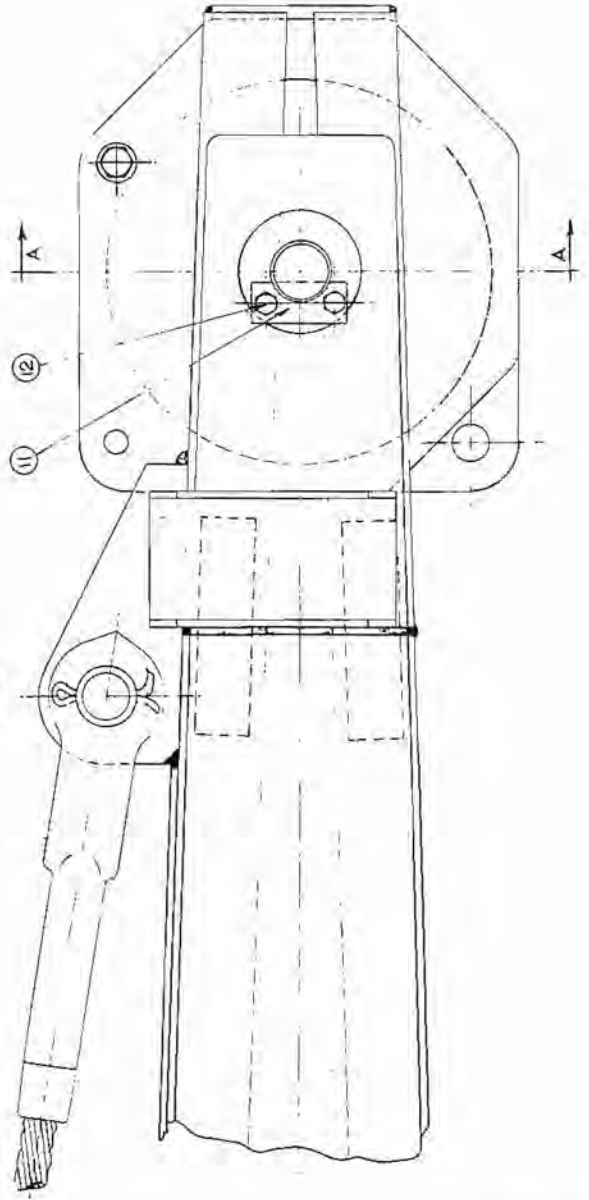
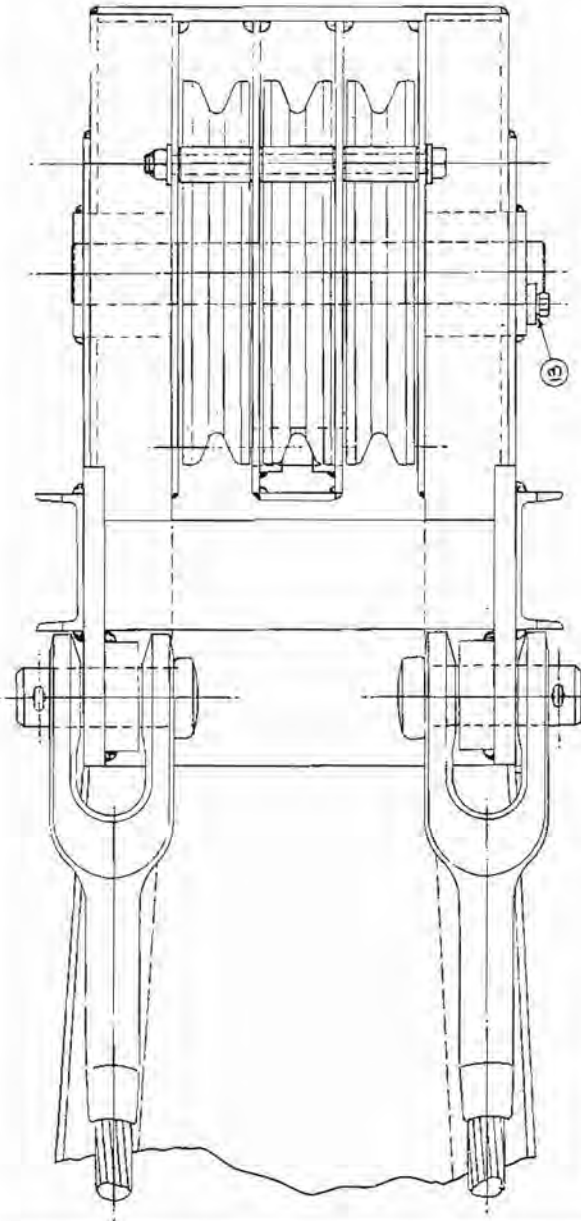
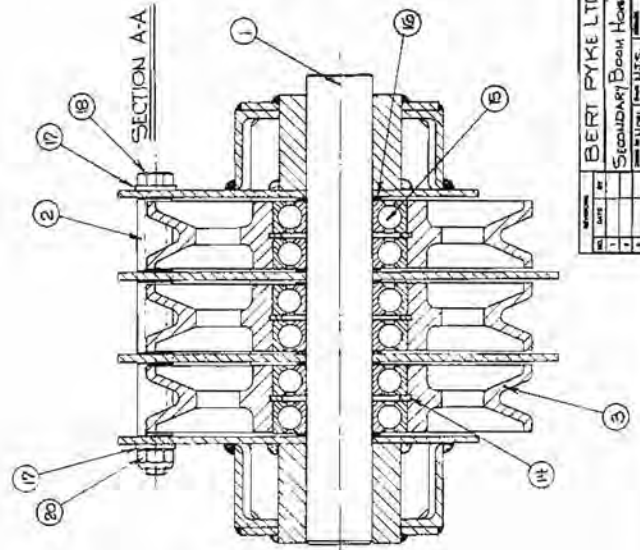
Drawn by: J. H. J. Pyke
Checked by: J. H. J. Pyke
Approved by: J. H. J. Pyke
Date: 10/10/54

18/20 TON CRANE
HOIST SHEAVE BLOCK

DRAWING
D-10707

<u>NUMBER</u>	<u>PART NUMBER</u>	<u>NAME</u>	<u>QUANTITY</u>
1	C-10708	Hoist Block	1
2	D-10686	Sheave	4
3	B-10687	Sheave Pin	1
4	5200-3	Retainer Plate	1
5	2762	Lockwasher	2
6	0323	Hex Hd. Bolt	2
7	7612	Snap Ring	4
8	4200-5	Ball Bearing	8
9			
10	A-10726	Spacing Washer	8

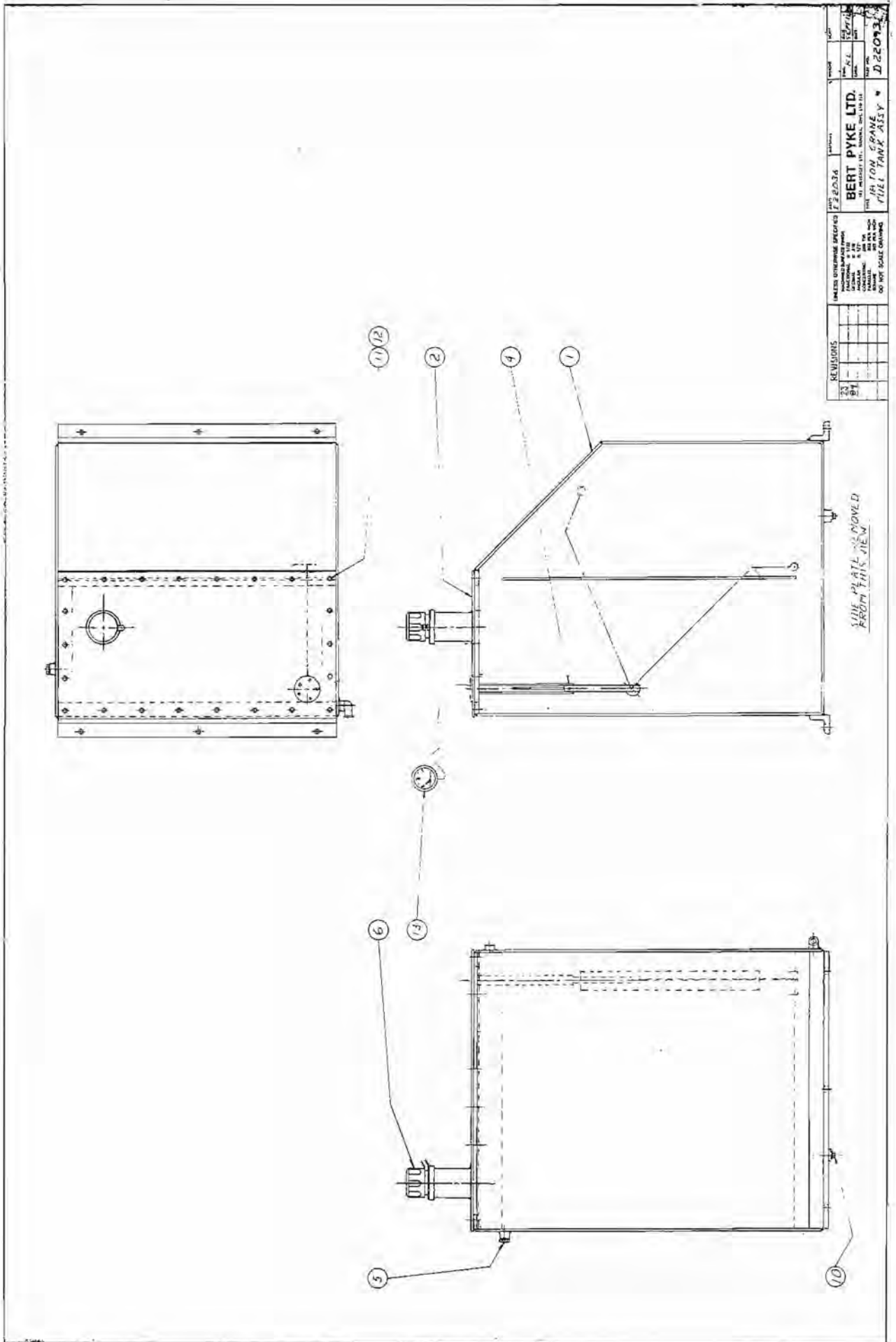
Berti Pyke Ltd.	
Secondary Down Haul Air	
Rev	1
Date	11/11/66
Drawn by	W.A. 2026
Checked by	
Approved by	
Doc 719	



18/20 TON CRANE
SECONDARY BOOM HOIST ASSEMBLY

DRAWING
D-10719

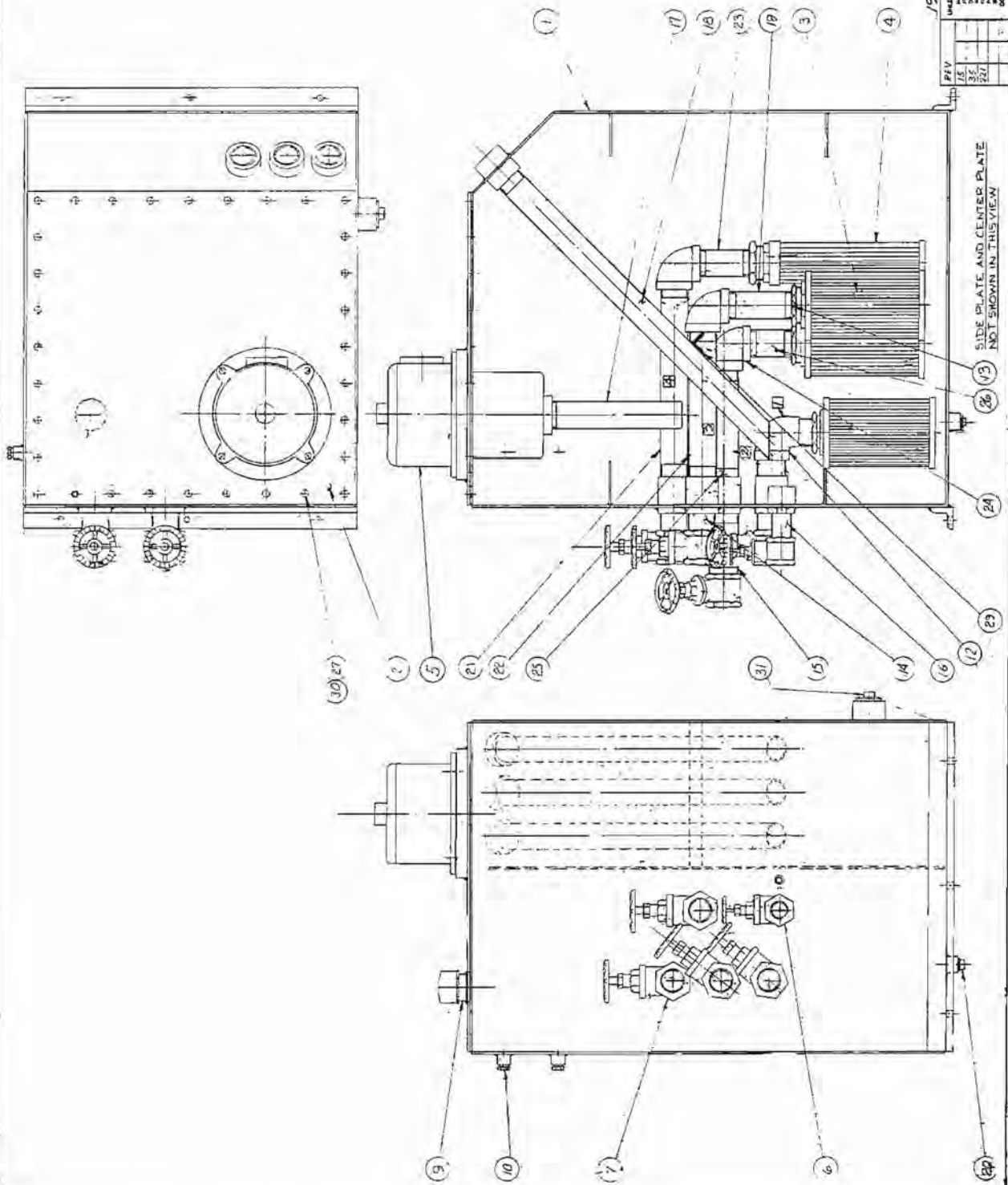
<u>NUMBER</u>	<u>PART NUMBER</u>	<u>NAME</u>	<u>QUANTITY</u>
1	B-10687	Sheave Pin	1
2	A-10710	Spacer Pipe	3
3	D-10686	Sheave (5/8 Dia. Cable)	3
4	C-22163	Sheave (3/4 Dia. Cable)	3
5			
6			
7			
8			
9			
10			
11	5200-3	Lockplate	1
12	0323	Hex Bolt	2
13	2762	Lockwasher	2
14	7612	Snap Ring	3
15	4200-5	Ball Bearing	6
16	A-10726	Spacing Washer	6
17	2740	Flat Washer	2
18	0955	Hex Bolt	1
19			
20	2670	Hex Locknut	1



18/20 TON CRANE
FUEL TANK ASSEMBLY

DRAWING
DD-22093

<u>NUMBER</u>	<u>PART NUMBER</u>	<u>NAME</u>	<u>QUANTITY</u>
1	D-22010	Tank Weldment	1
2	D-22011-5	Lid	1
3			
4	7120	Tank Unit	1
5	G-049	Sight Glass	1
6	7126	Filler Breather	1
7			
8			
9			
10	3636	Sq. Head Plug	1
11	0313	Hex Bolt	22
12	2762	Lockwasher	22
13	7121	Gas Gauge	1



SIDE PLATE AND CENTER PLATE
NOT SHOWN IN THIS VIEW

1981 PROD.

BERT PYKE LTD.
1870 CHAMBERLAIN
HTG. OIL TANK ASSEMBLY

10-22007

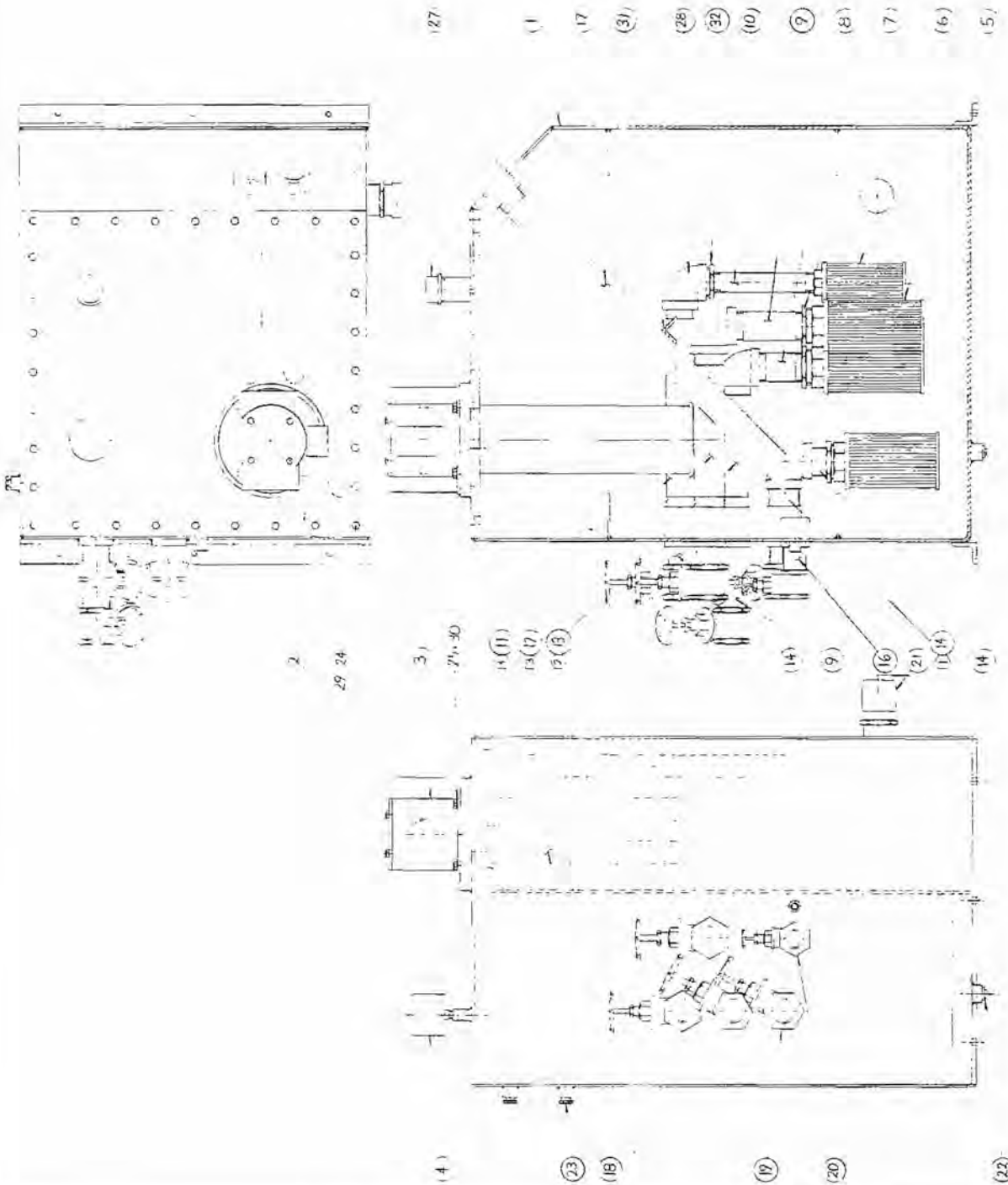
REV	DATE	BY	CHKD	APP'D
1				
2				
3				
4				
5				
6				
7				
8				
9				
10				
11				
12				
13				
14				
15				
16				
17				
18				
19				
20				
21				
22				
23				
24				
25				
26				
27				
28				
29				
30				
31				

18/20 TON CRANE
HYDRAULIC OIL TANK ASSEMBLY

DRAWING

D-22007

<u>NUMBER</u>	<u>PART NUMBER</u>	<u>NAME</u>	<u>QUANTITY</u>
1	D-22008	Hydraulic Oil Tank	1
2	G-22031	Lid	1
3	7123	Suction Element	3
4	G-046	Suction Element	1
5	G-059	Filter	1
6	F-529	Gate Valve	1
7	F-511	Gate Valve	4
8			
9	7126	Filler Breather	1
10	G-049	Sight Glass	2
11			
12	3556	Street Elbow	1
13	3703	Reduce Bushing	4
14	3558	Nipple	4
15	D-22007-15	Nipple	1
16	3665	Nipple	1
17	D-22007-17	Pipe	1
18	D-22007-18	Pipe	3
19	D-22007-19	Nipple	1
20	3791	Plug	1
21	D-22007-21	Nipple	1
22	D-22007-22	Nipple	1
23	D-22007-23	Nipple	1
24	3740	Elbow	3
25	D-22007-25	Nipple	1
26	D-22007-26	Nipple	1
27	0323	Bolt	32
28	G-22032	Gasket	1
29	D-22007-28	Angle	1
30	2762	Lockwasher	32
31	3660	Pipe Plug	1



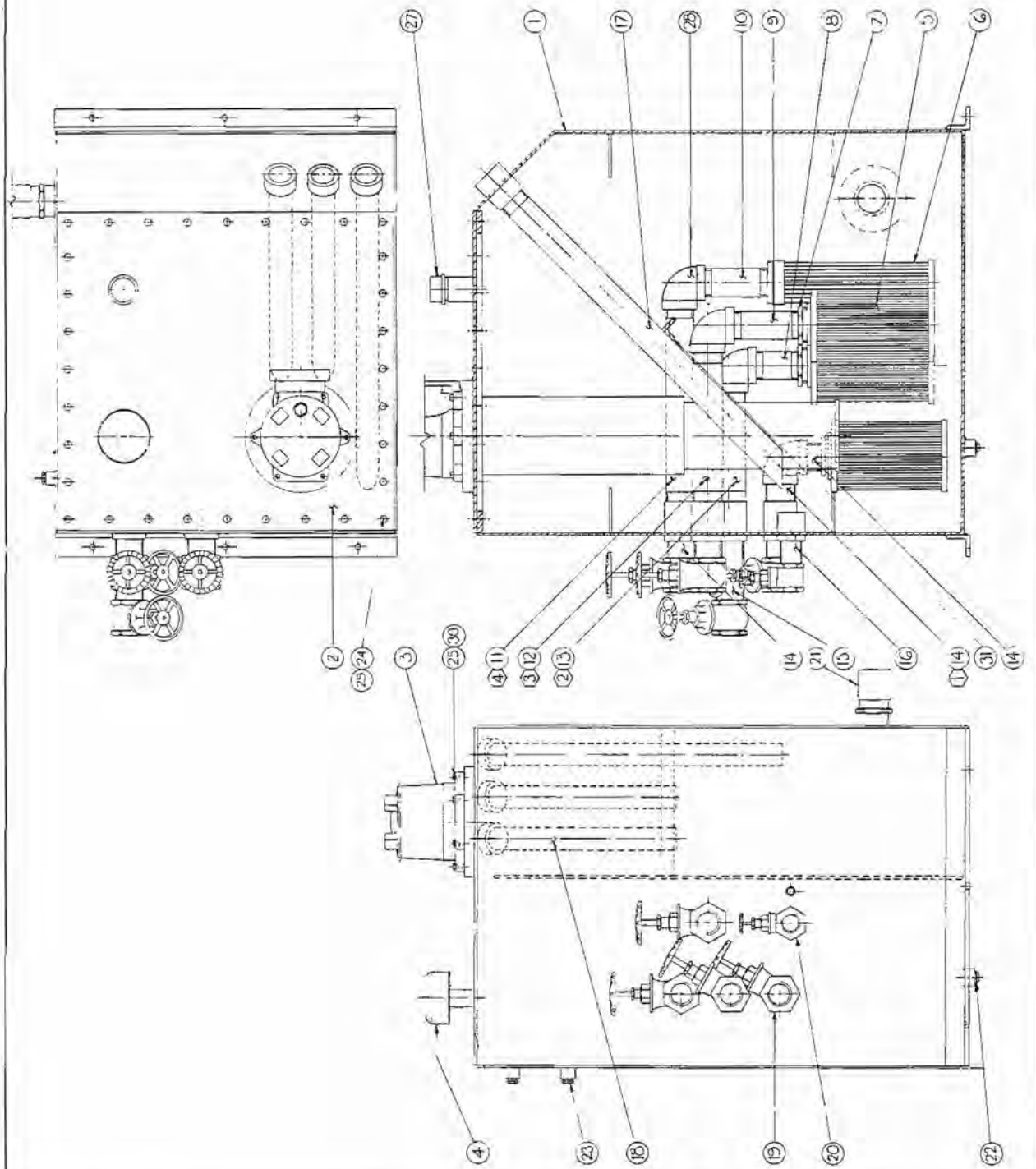
UNLESS OTHERWISE SPECIFIED DIMENSIONS ARE IN INCHES FRACTIONS ARE TO BE USED UNLESS OTHERWISE SPECIFIED TOLERANCES ARE TO BE USED UNLESS OTHERWISE SPECIFIED DO NOT SCALE DRAWING		E 22036 BERT PYKE LTD. 18 TON CRANE HYDRAULIC TANK ASSY	DRAWN BY CHECKED BY DATE
---	--	---	--------------------------------

18/20 TON CRANE
HYDRAULIC TANK ASSEMBLY
WITH SCHROEDER FILTERS

DRAWING
D-22007

<u>NUMBER</u>	<u>PART NUMBER</u>	<u>NAME</u>	<u>QUANTITY</u>
1	D-22008	Hyd. Oil Tank	1
2	C-22165	Lid	1
3	7131	Return Line Filter	1
4	7132	Breather	1
5	7134	Suction Element	3
6	7133	Suction Element	1
7	3703	Reducer	3
8	3799-18	Nipple	1
9	D-22007-9	Nipple	2
10	3714	Nipple	1
11	D-22007-11	Nipple	1
12	D-22007-12	Nipple	1
13	D-22007-13	Nipple	1
14	3558	Nipple	5
15			
16	3665	Nipple	1
17	D-22007-17	Pipe	1
18	D-22007-18	Pipe	2
19	F-511	Gate Valve	4
20	F-529	Gate Valve	1
21	8651	Tank Heater	1
22	3791	Plug	1
23	G-049	Sight Glass	2
24	0323	Hex Bolt	32
25	0555	Hex Bolt	6
26			
27	3557	Pipe Cap	1
28	3740	Elbow	4
29	2762	Lockwasher	32
30	2764	Lockwasher	4
31	D-22007-31	Angle	1
32	3566	Reducer	1

Bert Pyke Ltd.		Part No.	D22007
15 TON CRANE		Rev.	
HYDRAULIC TANK ASSY.		Rev.	
UNLESS OTHERWISE SPECIFIED		Rev.	
MATERIALS AND WORKMANSHIP		Rev.	
TO BE IN ACCORDANCE WITH		Rev.	
SPECIFICATIONS		Rev.	
AND DRAWINGS		Rev.	
TO BE IN ACCORDANCE WITH		Rev.	
SPECIFICATIONS		Rev.	
AND DRAWINGS		Rev.	



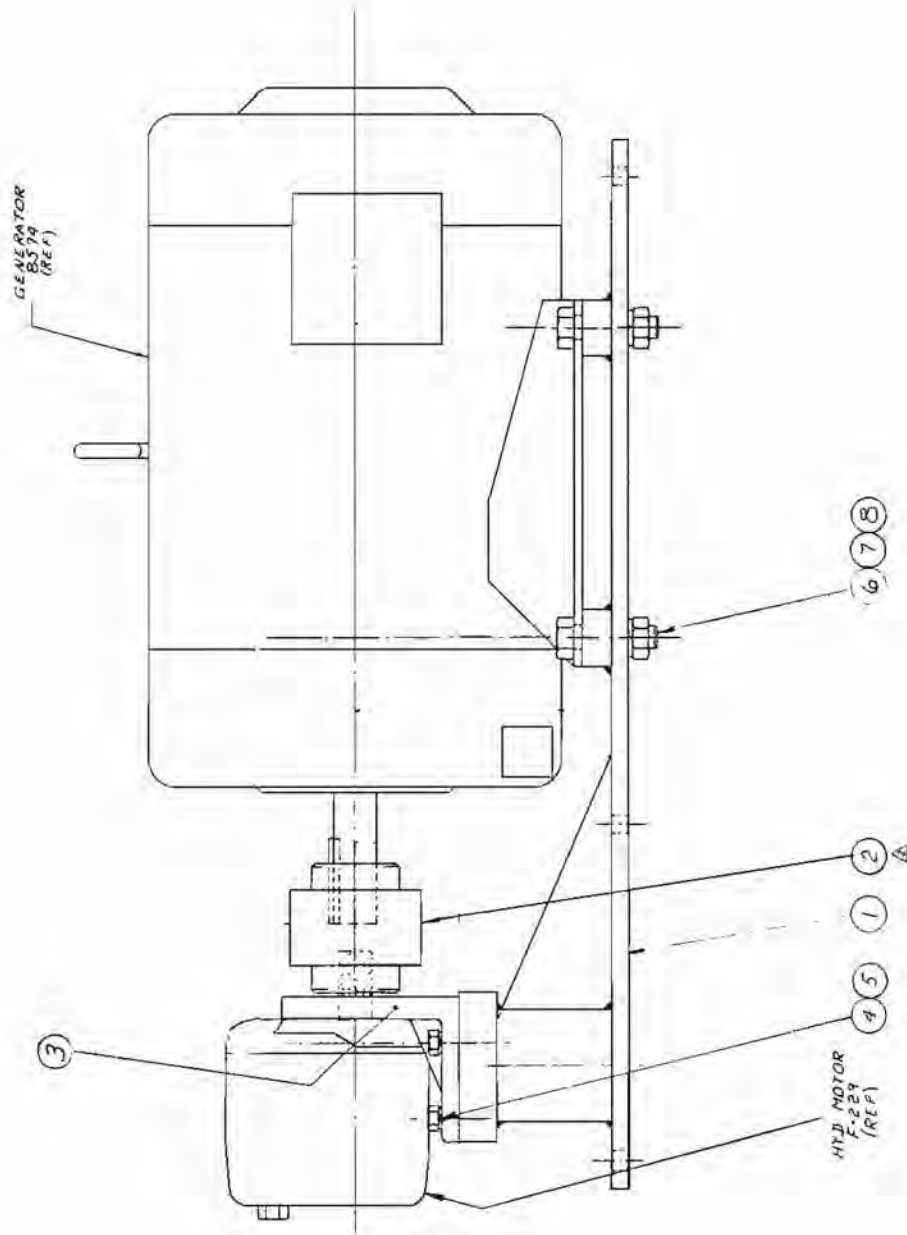
18/20 TON CRANEOPTIONALHYDRAULIC TANK ASSEMBLYDRAWINGWITH "PALL" FILTERSD-22007

<u>NUMBER</u>	<u>PART NUMBER</u>	<u>NAME</u>	<u>QUANTITY</u>
1	D-22008	Hyd. Oil Tank	1
2	C-22154	Lid	1
3	7127	Return Line Filter	1
4	G-111	Breather	1
5	7213	Suction Element	3
6	G-046	Suction Element	1
7	3703	Reducer	3
8	D-22007-8	Nipple	1
9	D-22007-9	Nipple	1
10	D-22007-10	Nipple	1
11	D-22007-11	Nipple	1
12	D-22007-12	Nipple	1
13	D-22007-13	Nipple	1
14	3558	Nipple	5
15	D-22007-15	Nipple	1
16	3665	Nipple	1
17	D-22007-17	Pipe	1
18	D-22007-18	Pipe	2
19	F-511	Gate Valve	4
20	F-529	Gate Valve	1
21	8651	Tank Heater	1
22	3791	Plug	1
23	G-049	Sight Glass	2
24	0323	Bolt	32
25	0327	Bolt	6
26			
27	3557	Pipe Cap	1

18/20 TON CRANE
COMPRESSOR & MOTOR ASSEMBLY

DRAWING
D-22013

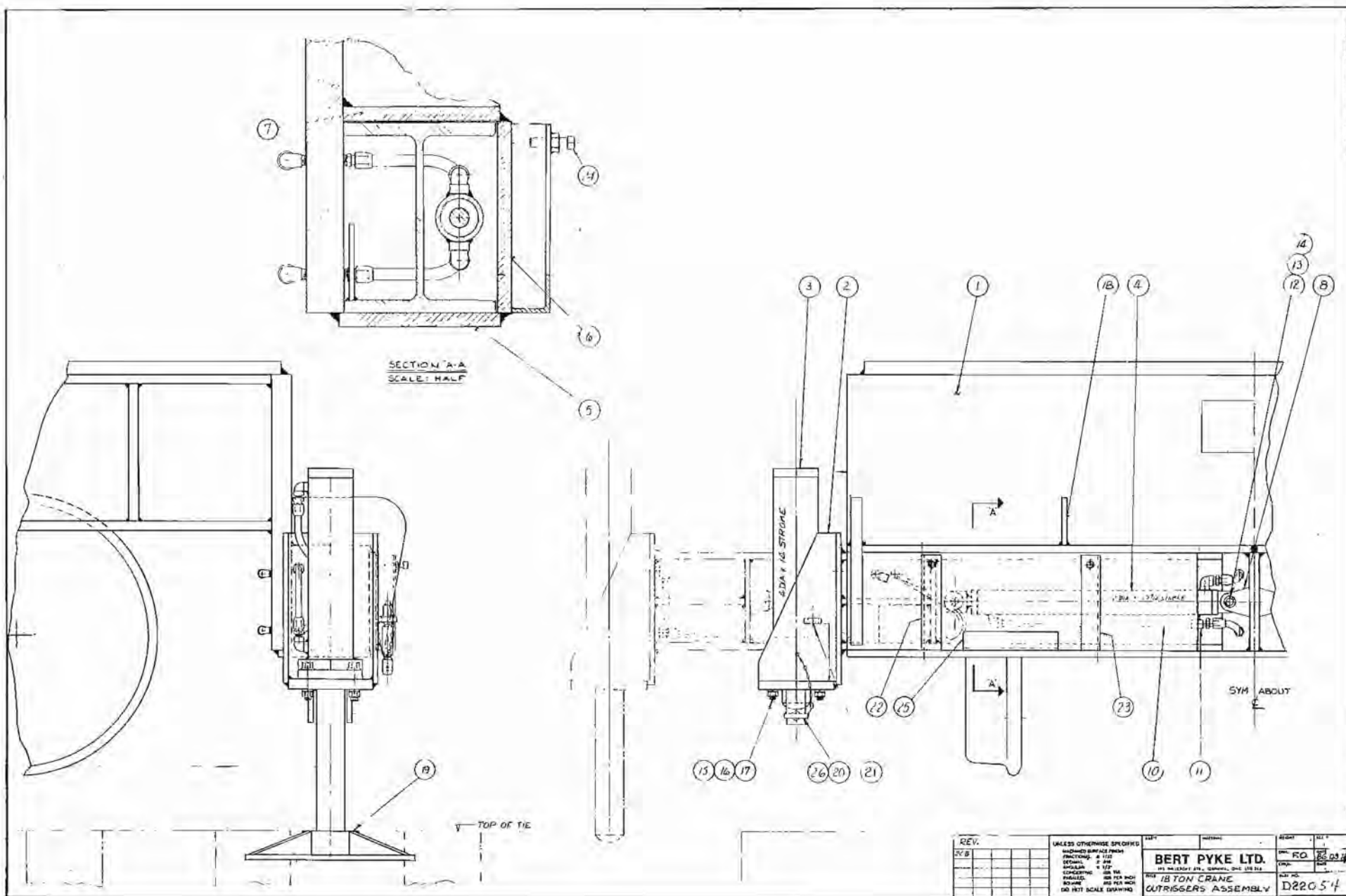
<u>NUMBER</u>	<u>PART NUMBER</u>	<u>NAME</u>	<u>QUANTITY</u>
1			
2	B-22208	Coupling	1
3	D-22012	Adaptor	1
4	D-22012-6	Angle	4
5	0335	Bolt	4
6	2624	Nut	6
7	2762	Washer	6
8	8363	Anti-Vib. Mount	4
9	3524	Elbow	1
10	3540	Pipe Tee	1
11	3790	Nipple	1
12	3789	Nipple	1
13	D-22012-7	Flat	1
14	3510	Pipe Plug	1
15	3377	Cap Nut	1
16	0347	Bolt	2
17	7364	"U" Bolt	1
18			
19	2761	Lockwasher	2
20	0227	Bolt	2
21	2504	Nut	2



B. P. PYKE LTD	
72 TON LANE	
SEAFORD, SUSSEX BN1 1 1	
Drawn by	REV
Checked by	REV
Approved by	REV
Date	1/11/68
Part No	D220/6

18/20 TON CRANEOPTIONAL
GENERATOR ASSEMBLYDRAWING
D-22016

<u>NUMBER</u>	<u>PART NUMBER</u>	<u>NAME</u>	<u>QUANTITY</u>
1	D-22016-1	MTG. Plate	1
2	B-22209	Coupling	1
3	F-575	Mounting Base	1
4	0447	Bolt	4
5	2763	Lockwasher	4
6	0571	Bolt	4
7	2510	Nut	4
8	2764	Lockwasher	4



18/20 TON CRANE
OPTIONAL HYDRAULIC OUTRIGGERS ASSEMBLY

DRAWINGD-22054

<u>NUMBER</u>	<u>PART NUMBER</u>	<u>NAME</u>	<u>QUANTITY</u>
1			
2	D-22051	Ext. Arm	4
3	7500-65	Cylinder	4
4	7500-26	Cylinder	4
5	D-22054-5	Plate	2
6	D-22054-6	Plate	4
7	D-22054-7	Plate	4
8	D-22052-4	Clevis	2
9	D-22052-6	Gusset	4
10	D-22054-10	Nipple	4
11	D-22054-11	Coupling	4
12	5002-7	Pin	8
13	2740	Washer	16
14	2817	Cotter Pin	16
15	0907	Bolt	16
16	2768	Lockwasher	16
17	2516	Nut	16
18	D-22054-18	Gusset	4
19	D-22052	Swivel Base Plate	4
20	B-22081	Lockout Pin	4
21	D-22054-21	Tubing	4
22	D-22050-8	Angle Bracket	4
23	D-22050-7	Angle Bracket	4
24	2074	Set Screw	8
25	D-22054-25	Angle	4
26	2871	Hitch Pin Clip	4

18/20 TON CRANEOPTIONALMANUAL OUTRIGGERS ASSEMBLYDRAWINGD-22230

<u>NUMBER</u>	<u>PART NUMBER</u>	<u>NAME</u>	<u>QUANTITY</u>
1	C-22053	Mod. Drawing	
2	D-22051	Ext. Arm	4
3	7500-65	Cylinder	4
4	B-22231	Pin	4
5	D-22230-5	Plate	2
6	D-22230-6	Plate	4
7	D-22230-7	Plate	4
8	D-22052-4	Clevis	2
9	D-22052-6	Gusset	4
10	A-22232	Stop Bolt	4
11	2771	Lockwasher	4
12	2871	Hitch Pin Clip	4
13	D-22230-13	Angle	4
14	2074	Sq. Hd. Set Screw	8
15	0907	Bolt	16
16	2768	Lockwasher	16
17	2516	Nut	16
18	D-22230-18	Gusset	4
19	D-22052	Swivel Base	4
20	B-22081	Lockout Pin	4
21	D-22230-21	Tubing	4
22	D-22050-8	Angle Bracket	4
23	D-22050-7	Angle Bracket	4
24	A-22233	Handle	4

18/20 TON CRANEOPTIONAL
BELL ASSEMBLYDRAWINGD-22159

<u>NUMBER</u>	<u>PART NUMBER</u>	<u>NAME</u>	<u>QUANTITY</u>
1	C-22160	Bracket	1
2	D-15280	Bell	1
3	D-15205-4	Washer	1
4	F-354	Bell Ringer	1
5	2672	Locknut	1