

SC 73 1/6

# Beehive



# BOOK

knitting for  
the first  
six months



P&B  
WOOLS

# 'Name this child'

christening robe in Beehive Baby Wool  
there are long and short versions

## PLEASE READ THIS FIRST

**ABBREVIATIONS**—K.=knit; P.=purl; st.=stitch; sl.=slip; w.fwd.=wool forward; w.ft.=wool front—bring wool to front of needle; w.b.=wool back—take wool to back of needle; w.r.n.=wool round needle; w.o.n.=wool on needle; p.s.s.o.=pass slip stitch over; tog.=together; t.b.l.=through back of loops; inc.=increase by working into front and back of stitch; dec.=decrease by working 2 sts. together; beg.=beginning; alt.=alternate; rep.=repeat; patt.=pattern; incl.=inclusive; ins.=inches; Cr.1F.=Cross 1 Front by inserting point of right-hand needle behind first st. into 2nd st. and knit, then into first st. and knit, then slip both sts. off needle together; Tw.2B.=Twist 2 back by knitting into back of 2nd st., then back of first st. on left-hand needle and slipping 2 sts. off needle together; Tw.2F.=Twist 2 Front by knitting into front of 2nd st., then front of first st. on left-hand needle and slipping 2-sts. off needle together; Tw.2P.=Twist 2 purlwise by purling into front of 2nd st., then front of first st. on left-hand needle and slipping 2 sts. off needle together.

**HOW TO CHECK YOUR TENSION**—Before you knit these designs check your tension carefully. Take a pair of No. 12 needles and some Patons Beehive Baby Wool, Patonised. Cast on 17 sts., and work in stocking stitch—1 row knit; 1 row purl—for 21 rows. Cast off; press very lightly on wrong side. The tension should be  $8\frac{1}{2}$  sts. and  $10\frac{1}{2}$  rows to one

square inch and the knitted square should measure 2 inches each way. If the square is bigger your work is too loose; try a size finer needle. If it is smaller your work is too tight; try a size coarser needle. If you knit to the correct tension in stocking stitch, you will knit naturally to the correct tension for any stitch in this book. If you alter the needles to obtain the correct tension in stocking stitch corresponding alterations must be made to the needles throughout.

**SIZES**—The figures in square brackets [ ] refer to the large size.

**MAKING UP**—Except where otherwise stated a flat seam is used.

**RIMPLE**—Because of Rimple's special nubby character, the knitted fabric is subject to slight variations in size and may produce a more casual, easy-fitting garment than is usual with classic P & B brands.

**WASHING DOUBLE KNITTING**—As some of these designs use a substantial weight of double knitting wool, special care in washing and drying is essential if they are to keep their shape. Surplus water should be removed as quickly and as thoroughly as possible (a light wringer is permissible); while the garments are wet they should be continually supported and should on no account be hung up to dry.



#### LONG VERSION

**MATERIALS:** 6 oz. PATONS BEEHIVE Baby Wool, Patonised.

Two No. 12 BEEHIVE or QUEEN BEE needles, measured by BEEHIVE gauge. Three buttons. Length of ribbon.

*You must use the P & B brand recommended above to be sure of a successful result.*

**MEASUREMENTS:** To fit 17-18 inch

chest. Length  $22\frac{1}{2}$  ins. Sleeve seam,  $1\frac{1}{2}$  ins.

**TENSION:**  $8\frac{1}{2}$  sts. and  $10\frac{1}{2}$  rows to one square inch on No. 12 needles, measured over stocking stitch. *See page 2 for how to check your Tension, and Abbreviations.*

#### FRONT

Cast on 165 sts.

Proceed in skirt patt. as follows:—

**1st row**—Sl.1 knitwise, K.1, \* w.fwd., K.2 tog.t.b.l., K.8, rep. from \* to last 3 sts., w.fwd., K.2 tog.t.b.l., K.1.

**2nd row**—Sl.1 knitwise, P.1, \* P.1, w.r.n., P.2 tog., P.5, P.2 tog.t.b.l., w.r.n., rep. from \* to last 3 sts., P.2, K.1.

**3rd row**—Sl.1, K.1, \* K.2, w.fwd., K.2 tog.t.b.l., K.3, K.2 tog., w.fwd., K.1, rep. from \* to last 3 sts., K.3.

**4th row**—Sl.1, P.1, \* P.3, w.r.n., P.2 tog., P.1, P.2 tog.t.b.l., w.r.n., P.2, rep. from \* to last 3 sts., P.2, K.1.

**5th row**—Sl.1, K.1, \* K.4, w.fwd., sl.1, K.2 tog., p.s.s.o., w.fwd., K.3, rep. from \* to last 3 sts., K.3.

**6th row**—Sl.1, P. to last st., K.1.

**7th row**—Sl.1, K.1, K.2 tog., \* (w.fwd.) twice (counting as 2 sts. in following row), K.2 tog.t.b.l., K.3, K.2 tog., (w.fwd.) twice, sl.1, K.2 tog., p.s.s.o., rep. from \* to last 11 sts., (w.fwd.) twice, K.2 tog.t.b.l., K.3, K.2 tog., (w.fwd.) twice, K.2 tog.t.b.l., K.2.

**8th row**—Sl.1, P.1, \* P.2, K.1, P.5, K.1, P.1, rep. from \* to last 3 sts., P.2, K.1.

**9th row**—Sl.1, K.1, \* K.2, (w.fwd.) twice, sl.1, K.2 tog., p.s.s.o., K.1, K.3 tog., (w.fwd.) twice, K.1, rep. from \* to last 3 sts., K.3.

**10th row**—Sl.1, P.1, \* (P.3, K.1) twice, P.2, rep. from \* to last 3 sts., P.2, K.1.

**11th row**—Sl.1, K.1, \* K.3, (w.fwd.) twice, sl.2, K.3 tog., pass the 2 slip sts. over, (w.fwd.) twice, K.2, rep. from \* to last 3 sts., K.3.

**12th row**—As 10th row.

**13th row**—Sl.1, K.1, \* K.1, K.3 tog., (w.fwd.) twice, K.3, (w.fwd.) twice, sl.1, K.2 tog., p.s.s.o., rep. from \* to last 3 sts., K.3.

**14th row**—As 8th row.

**15th row**—Sl.1, K.1, K.3 tog., \* (w.fwd.) twice, K.5, (w.fwd.) twice, sl.2, K.3 tog., pass the 2 slip sts. over, rep. from \* to last 10 sts., (w.fwd.) twice, K.5, (w.fwd.) twice, sl.1, K.2 tog., p.s.s.o., K.2.

**16th row**—Sl.1, P.1, \* P.1, K.1, P.7, K.1, rep. from \* to last 3 sts., P.2, K.1.

**17th row**—Sl.1, K.1, \* K.5, w.fwd., K.2 tog.t.b.l., K.3, rep. from \* to last 3 sts., K.3.

**18th row**—Sl.1, P.1, \* P.3, P.2 tog.t.b.l., w.r.n., P.1, w.r.n., P.2 tog., P.2, rep. from \* to last 3 sts., P.2, K.1.

**19th row**—Sl.1, K.1, \* K.2, K.2 tog., w.fwd., K.3, w.fwd., K.2 tog.t.b.l., K.1, rep. from \* to last 3 sts., K.3.

**20th row**—Sl.1, P.1, \* P.1, P.2 tog.t.b.l., w.r.n., P.5, w.r.n., P.2 tog., rep. from \* to last 3 sts., P.2, K.1.

**21st row**—Sl.1, K.1, K.2 tog., \* w.fwd., K.7, w.fwd., sl.1, K.2 tog., p.s.s.o., rep. from \* to last 11 sts., w.fwd., K.7, w.fwd., K.2 tog.t.b.l., K.2.

**22nd row**—Sl.1, P. to last st., K.1.

**23rd row**—Sl.1, K. to end.

**24th to 28th row**—Rep. 22nd and 23rd rows twice, then 22nd row once.

These 28 rows form the patt.

Rep. 1st to 28th row 5 times more, then 1st to 23rd rows once.

**Next row**—K.1, (P.3 tog., P.2 tog.) 8 times, (P.2 tog.) 39 times, (P.2 tog., P.3 tog.) 9 times, K.1 (75 sts.).

Work **Waist Band** as follows:—

**1st to 4th row**—\* K.1, P.1, rep. from \* to last st., K.1.

**5th row**—\* K.1, P.2 tog., (w.o.n.) twice, counting as 2 sts. in next row, K.2 tog., P.1, K.2 tog., (w.r.n.) twice, counting as 2 sts. on next row, P.2 tog., rep. from \* to last 5 sts., K.1, P.2 tog., (w.o.n.) twice, K.2 tog.

**6th to 9th row**—As 1st row.

**10th row**—K.1, P. to last st., K.1.

Proceed in **Bodice patt.** as follows:—

Work 1st to 6th rows as at commencement of Front.

**7th row**—Sl.1, K. to end.

**8th row**—Sl.1, P. to last st., K.1.

**9th and 10th rows**—As 7th and 8th.

These 10 rows form the patt.

Keeping patt. correct throughout, **shape armholes** by casting off 5 sts. at beg. of next 2 rows, then dec. 1 st. at both ends of next and every alt. row until 55 sts. remain.\*\*

Continue on these sts. until work measures 2½ ins. from beg. of armhole shaping, finishing so that right side of work will be facing when working next row.

**Shape neck** as follows:—

**Next row**—Patt. 21, cast off 13, patt. to end.

Proceed on **each group** of sts., dec. 1 st. at neck edge on **every** row until 18 sts. remain.

continued on page 5

## SHORT VERSION

**MATERIALS:** 3 oz. PATONS BEEHIVE Baby Wool, Patonised.

Two No. 12 BEEHIVE or QUEEN BEE needles, measured by BEEHIVE gauge. Three buttons. Length of ribbon.

**MEASUREMENTS:** To fit 17-18 inch chest. Length, 15 ins. Sleeve seam, 1½ ins.

**TENSION:** 8½ sts. and 10½ rows to one square inch on No. 12 needles, measured over stocking stitch. *See page 2 for how to check your Tension, and Abbreviations.*

Work as Christening Dress but **noting** that "rep. 1st to 28th rows twice more, then 1st to 23rd rows once", should be worked in place of "rep. 1st to 28th rows five times, then 1st to 23rd rows once" of the skirt patt.



continued from page 4

Continue on these sts. until work measures 3¾ ins. from beg. of armhole shaping, finishing at armhole edge.

Shape shoulder as follows:—

**1st row**—Cast off 9, work to end.

**2nd row**—Work all across. Cast off.

### BACK

Work as Front to \*\*.

Continue on these sts. until work measures same as Front to shoulder shaping.

Shape shoulders by casting off 9 sts. at beg. of next 4 rows. Cast off.

### SLEEVES

Cast on 43 sts.

Work 6 rows in moss stitch (every row \* K.1, P.1, rep. from \* to last st., K.1.).

**Next row**—Inc. in first st. knitwise, (P.1, inc. in next st. knitwise) 21 times (65 sts.).

**Next row**—Sl.1, P. to last st., K.1.

Work 1st to 10th rows incl. of Bodice patt. as on Front.

Keeping patt. correct throughout **shape armholes** by casting off 3 sts. at beg. of next 2 rows, then dec. 1 st. at both ends

of next and every alt. row until 45 sts. remain, every row until 31 sts. remain. Cast off, working 2 tog. all across row to last st., cast off last st.

### NECKBAND

Using a back-stitch seam join right shoulder of Back and Front.

With right side of work facing **knit up** 59 sts. round neck.

Work 6 rows in moss stitch. Cast off in moss stitch.

### TO MAKE UP

With wrong side of work facing block each piece by pinning out round edges, taking care not to stretch waist.

Press each piece **very lightly** using a warm iron and damp cloth.

Using a back-stitch seam join left shoulder of Back and Front for ½ inch. Join side and sleeve seams and stitch Sleeves into position.

Attach 3 buttons to left shoulder and work button-loops to correspond.

Press seams.

Thread ribbon through holes at waist and tie bow at Front.

# All-in-one

## Four-ply rompers in an all-over pattern

**MATERIALS:** 4 oz. PATONS BEEHIVE Fingering, 4-ply, Patonised, or PATONS NYLOX Knitting 4-ply, Patonised.

Two No. 10 and two No. 9 BEEHIVE or QUEEN BEE needles, measured by BEEHIVE gauge. Eight buttons.

*You must use the P & B brands recommended above to be sure of a successful result.*

**MEASUREMENTS:** To fit 19 inch chest. Length at centre back, 15½ ins. Sleeve seam, 5½ ins.

*These instructions apply to the above measurements only; adaptations to other sizes are not available.*

**TENSION:** 6½ sts. and 8½ rows to one square inch on No. 9 needles, measured over stocking stitch. See page 2 for how to check your Tension, and Abbreviations.

### FRONT

Using No. 9 needles, commencing at lower edge, cast on 18 sts.

1st row—K.

2nd and alt. rows—P. to end, cast on 4 sts.

3rd row—K. to end, cast on 4 sts.

5th row—K.8, K.2 tog.t.b.l., K.14, K.2 tog., K. to end, cast on 4 sts.

7th row—K.12, K.2 tog.t.b.l., K.12, K.2 tog., K. to end, cast on 4 sts.

9th row—K.7, Cr.1F., K.4, Cr.1F., K.1, K.2 tog.t.b.l., K.10, K.2 tog., K.1, Cr.1F., K.4, Cr.1F., K. to end, cast on 4 sts.

11th row—K.20, K.2 tog.t.b.l., K.8, K.2 tog., K. to end, cast on 4 sts.

13th row—K.6, (Cr.1F., K.4) 3 times, K.2 tog.t.b.l., K.6, K.2 tog., (K.4, Cr.1F.) 3 times, K.2, cast on 4 sts.

15th row—K.28, K.2 tog.t.b.l., K.4, K.2 tog., K. to end, cast on 4 sts.

17th row—K.5, (Cr.1F., K.4) 4 times, Cr.1F., K.1, K.2 tog.t.b.l., K.2, K.2 tog., K.1, (Cr.1F., K.4) 4 times, Cr.1F., K.1, cast on 4 sts.

19th row—K.36, K.2 tog.t.b.l., K.2 tog., K. to end, cast on 4 sts.

20th row—P. to end, cast on 5 sts.

21st row—K.5, (Cr.1F., K.4) 12 times, Cr.1F., cast on 5 sts. (84 sts.).

22nd and 24th rows—K.1, P. to last st., K.1.

23rd row—K.

25th row—K.2, \* Cr.1F., K.4, rep. from \* to last 4 sts., Cr.1F., K.2.

Keeping patt. correct, continue until work measures 9¾ ins. from beg. measured at centre of work, finishing at end of a P. row.

Next row—K.1, (K.2 tog.) 41 times, K.1 (43 sts.).

Work 5 rows in moss stitch (every row \* K.1, P.1, rep. from \* to last st., K.1.)

Next row—K.1, (inc. in next st., K.1) 21 times (64 sts.).

Next row—K.1, P. to last st., K.1.

Proceed as follows:—

1st row—K.1, \* Cr.1F., K.4, rep. from \* to last 3 sts., Cr.1F., K.1.

2nd and alt. rows—K.1, P. to last st., K.1.

3rd row—K.

5th row—\* K.4, Cr.1F., rep. from \* to last 4 sts., K.4.

7th row—K.

8th row—K.1, P. to last st., K.1.

Keeping patt. correct throughout shape armholes by casting off 4 sts. at beg. of next 2 rows then dec. 1 st. at both ends of next and every alt. row until 48 sts. remain.\*\*

Continue on these sts. until work measures 2¾ ins. from beg. of armhole shaping, finishing at end of a P. row.



**Shape neck** as follows:—

**Next row**—K.19, cast off 10, K. to end. Proceed on each group of sts., dec. 1 st. at neck edge on every row until 15 sts. remain.

Continue on these sts. until work measures 4 ins. from beg. of armhole shaping, finishing at armhole edge.

**Shape shoulder** by casting off 7 sts. at beg. of next row.

Work 1 row. Cast off.

### BACK

Work as Front to \*\*.

Continue on these sts. until work measures same as Front to shoulder shaping.

SC73

**Shape shoulders** by casting off 7 sts. at beg. of next 2 rows, 8 sts. at beg. of following 2 rows. Cast off.

### SLEEVES

Using No. 10 needles, cast on 29 sts.

Work 11 rows in moss stitch.

**Next row**—Moss stitch 2, (inc. in next st., moss stitch 5) 4 times, inc. in next st., moss stitch to end (34 sts.).

**Change to No. 9 needles** and proceed in patt. as follows:—

**1st row**—K.

**2nd and alt. rows**—K.1, P. to last st., K.1.

**3rd row**—\* K.4, Cr.1F., rep. from \* to last 4 sts., K.4.

**5th row**—K.

**7th row**—K.1, \* Cr.1F., K.4, rep. from \* to last 3 sts., Cr.1F., K.1.

**8th row**—K.1, P. to last st., K.1.

These 8 rows form the patt.

Continue in patt. working extra sts. into patt., inc. 1 st. in first st. and last st. but one on next and every following 5th row until there are 44 sts.

Continue on these sts. until work measures 5½ ins. from beg., finishing at end of a P. row.

**Shape top** by casting off 2 sts. at beg. of next 2 rows. Dec. 1 st. at both ends of next and every alt. row until 18 sts. remain, every row until 12 sts. remain. Cast off.

### NECKBAND

Using a back-stitch seam, join right shoulder of Back and Front.

Using No. 10 needles with right side of work facing knit up 51 sts. round neck. Work 4 rows in moss stitch.

Cast off loosely in moss stitch.

### TO MAKE UP

With wrong side of work facing, block each piece by pinning out round edges. Press each piece using a warm iron and damp cloth.

Join side and sleeve seams and stitch Sleeves into position.

Attach four buttons to left shoulder and work button-loops to correspond.

continued on page 8

continued from page 7

## LEG BANDS

Using No. 10 needles, with right side of work facing omitting 18 cast-on sts., **knit up** 67 sts. round leg.

**1st row**—(K.1, P.2 tog.) 22 times, K.1 (45 sts.).

Work 4 rows in moss stitch.

Cast off loosely in moss stitch.

**Lower edging**:—

Using No. 10 needles, with right side of work facing, **knit up** 4 sts. from Leg

Band, 18 sts. from cast-on sts., 4 sts. from second Leg Band (26 sts.).

K. 1 row.

**Next row** (on which buttonholes are worked)—K.1, (K.2 tog., w.fwd., K.5) twice, K.1, w.fwd., K.2 tog., K.5, w.fwd., K.2 tog., K.1.

K. 2 rows.

Cast off.

Omitting buttonholes, complete Back to match.

Attach buttons. Press seams.



**MATERIALS:** 3 oz. PATONS RIMPLE Double Knitting.

Two No. 10 and two No. 8 BEEHIVE or QUEEN BEE needles, measured by BEEHIVE gauge. Three buttons.

*You must use the P & B brand recommended above to be sure of a successful result.*

**MEASUREMENTS:** To fit 18–19 inch chest. Length,  $8\frac{3}{4}$  ins. Sleeve seam, 5 ins.

*These instructions apply to the above measurements only; adaptations to other sizes are not available.*

**TENSION:** 5 sts. and 7 rows to one square inch on No. 8 needles, measured over stocking stitch. *See page 2 for how to check your Tension, and Abbreviations.*

## BACK

Using No. 10 needles, cast on 39 sts.

Work 9 rows in moss stitch (every row \* K.1, P.1, rep. from \* to last st., K.1).

**Next row**—Moss stitch 1, (inc. in next st., moss stitch 6) 5 times, inc. in next st., moss stitch to end (45 sts.).

**Change to No. 8 needles** and knitting 1 st. at both ends of every row, proceed in stocking stitch until work measures  $4\frac{1}{2}$  ins. from beg., finishing at end of a P. row.

**Shape raglan armholes** as follows:—

**1st and 2nd rows**—Cast off 1, work to end.

**3rd row**—K.1, K.2 tog.t.b.l., K. to last 3 sts., K.2 tog., K.1.

**4th row**—K.1, P. to last st., K.1.

Rep. 3rd and 4th rows 13 times more (15 sts.). Cast off.

## RIGHT FRONT

Using No. 10 needles, cast on 17 sts.

Work 9 rows in moss stitch.

**Next row**—Moss stitch 2, (inc. in next st., moss stitch 3) 3 times, inc. in next st., moss stitch to end (21 sts.).

**Change to No. 8 needles** and proceed in stocking stitch as before until work measures same as Back up to armhole shaping, finishing at end of a P. row.

**Shape front slope and raglan armhole** as follows:—

**1st row**—K.2 tog., K. to end.

**2nd row**—Cast off 1, P. to last st., K.1.

**3rd row**—K. to last 3 sts., K.2 tog., K.1.

Continue dec. at armhole edge as before on every alt. row **at the same time** dec. 1 st. at front edge on every 6th row from previous dec. until 3 sts. remain.

Continue without further dec. at front edge but still dec. at armhole edge until 1 st. remains.

Work 1 row. Fasten off.





### LEFT FRONT

Work to match Right Front reversing all shapings, noting that tog. will be worked t.b.l.

### SLEEVES

Using No. 10 needles, cast on 25 sts. Work 9 rows in moss stitch.

**Next row**—Moss stitch 1, (inc. in next st., moss stitch 6) 3 times, inc. in next st., moss stitch to end (29 sts.).

**Change to No. 8 needles** and proceed in stocking stitch as before, inc. 1 st. in first st. and last st. but one on 5th and every following 8th row until there are 35 sts.

Continue on these sts. until work measures 5 ins. from beg., finishing at end of a P. row.

**Shape top** by working 1st to 4th rows of raglan shaping as on Back.

Rep. 3rd and 4th rows 13 times more (5 sts.). Cast off.

### FRONT BAND

Using No. 10 needles, cast on 5 sts.

**1st and 2nd rows**—(K.1, P.1) twice, K.1.

**3rd row**—K.1, P.2 tog., w.r.n., P.1, K.1.

Continue in moss stitch working a buttonhole as on last row on every 16th row from previous buttonhole until 3 buttonholes in all have been worked.

Continue in moss stitch without further buttonholes until work measures 20½ ins. (not stretched) from beg.

Cast off in moss stitch.

**RIMPLE MUST NOT BE PRESSED EXCEPT FOR SPECIAL DETAILS AS STATED IN MAKE UP**

### TO MAKE UP

Join side and sleeve seams and stitch Sleeves into position.

Stitch Front Band into position.

Attach buttons. Press seams.

**MATERIALS:** 25 oz.  
PATONS DOUBLE  
QUICK Knitting.

Two No. 8 and two No. 10  
BEEHIVE or QUEEN  
BEE needles, measured by  
BEEHIVE gauge. Four  
buttons. One 26 inch open-  
ended zipp. 1¼ yards peter-  
sham binding.

**MEASUREMENTS:**  
Length from top of shoul-  
der with flap turned up, 27  
ins.

**TENSION:** 5½ sts. and 7½  
rows to one square inch on  
No. 10 needles, measured  
over stocking stitch. *See*  
*page 2 for how to check your*  
*Tension, and Abbreviations.*

#### RIGHT FRONT

Using No. 8 needles, cast  
on 50 sts. K. 7 rows.

Next row—K.2, \* inc. in  
next st., K.2, inc. in next st.,  
K.1, rep. from \* to last 8  
sts., inc. in next st., K.7  
(67 sts.).



## *Dreamland Express*

a zipper sleeping bag in Double Quick Knitting

Proceed in patt. with garter stitch border  
as follows:—

1st row—K.7, \* P.2, K.1, rep. from \* to  
end.

2nd row—P. to last 6 sts., K.6.

3rd row—K.

4th row—P.1, \* K.2, P.1, rep. from \* to  
last 6 sts., K.6.

5th row—As 3rd row.

6th row—P. to last 6 sts., K.6.

These 6 rows form the patt.

Continue in patt. until work measures  
22 ins. from beg., finishing with wrong

side facing for next row. Keeping garter  
stitch border and patt. correct, **shape**  
for sleeve as follows:—

1st row—Cast on 2 sts., patt. to last 6  
sts., K.6.

2nd row—K.6, patt. to end.

Rep. 1st and 2nd rows twice more.

Next row—Cast on 4 sts., patt. to last  
6 sts., K.6.

Next row—K.6, patt. to end.

Rep. last 2 rows twice more.

Next row—Cast on 10 sts., patt. to last  
6 sts., K.6 (95 sts.).

Continue on these sts. until work

measures 26 ins. from beg., finishing at front edge.

**Shape neck** as follows:—

**Next row**—Cast off 9 sts., patt. to end. Continue in patt. dec. 1 st. at neck edge on every row until 81 sts. remain.

Continue on these sts. until work measures 27 ins. from beg., finishing at sleeve edge.

**Shape top of sleeve and shoulder** as follows:—

**1st row**—Cast off 29 sts., patt. to end.

**2nd row**—Patt. all across.

**3rd row**—Cast off 13 sts., patt. to end.

**4th row**—As 2nd row.

Rep. 3rd and 4th rows twice more.

Cast off.

### LEFT FRONT

Using No. 8 needles, cast on 50 sts.

K. 7 rows.

**Next row**—K.7, \* inc. in next st., K.1, inc. in next st., K.2, rep. from \* to last 3 sts., inc. in next st., K.2 (67 sts.).

Proceed in patt. with garter stitch border as follows:—

**1st row**—\* K.1, P.2, rep. from \* to last 7 sts., K.7.

**2nd row**—K.6, P. to end.

**3rd row**—K.

**4th row**—K.6, \* P.1, K.2, rep. from \* to last st., P.1.

**5th row**—As 3rd row.

**6th row**—K.6, P. to end.

These 6 rows form the patt.

Complete to match Right Front reversing all shapings.

### BACK

Using No. 8 needles, cast on 100 sts.

K. 4 rows.

**Next row**—K.1, (K.2 tog., w.fwd., K.30) twice, w.fwd., K.2 tog., K.30, w.fwd., K.2 tog., K.1.

K.2 rows.

**Next row**—K.6, \* inc. in next st., K.1, inc. in next st., K.2, rep. from \* to last 9 sts., (inc. in next st., K.1) twice, K.5 (136 sts.).

Proceed in patt. with garter stitch borders as follows:—

**1st row**—K.7, \* P.2, K.1, rep. from \* to last 6 sts., K.6.

**2nd row**—K.6, P. to last 6 sts., K.6.

**3rd row**—K. to end.

**4th row**—K.6, \* P.1, K.2, rep. from \* to last 7 sts., P.1, K.6.

**5th row**—As 3rd row.

**6th row**—K.6, P. to last 6 sts., K.6.

Continue in patt. with garter stitch borders until work measures 7 ins. from beg., finishing with right side facing for next row. The garter stitch borders are now complete.

**Next row**—\* K.1, P.2, rep. from \* to last st., K.1.

**Next row**—\* P.1, K.2, rep. from \* to last st., P.1.

Continue in patt. until work measures 29 ins. from beg., finishing with right side of work facing for next row.

Keeping patt. correct, **shape for sleeves** as follows:—

Cast on 2 sts. at beg. of next 6 rows, 4 sts. at beg. of following 6 rows, 10 sts. at beg. of following 2 rows (192 sts.).

Continue on these sts. until work matches Fronts up to top of sleeve and shoulder shapings, finishing with right side facing for next row.

**Shape top of sleeves and shoulders** as follows:—

Cast off 29 sts. at beg. of next 2 rows, 13 sts. at beg. of following 8 rows (30 sts.). Cast off.

### TO MAKE UP

With wrong side of work facing, block each piece by pinning out round edges. Press each piece using a warm iron and damp cloth.

Using a back-stitch seam, join shoulders of Back and Fronts.

### COLLAR

Using No. 10 needles, with right side of work facing, **knit up** 88 sts. round neck. K. 7 rows. Cast off.

### CUFFS

Using No. 10 needles, with right side of work facing, **knit up** 54 sts. along edge of sleeve.

K. 9 rows. Cast off.

continued on page 22

# Vest

**MATERIALS:** 2 oz. PATONS BEEHIVE Baby Wool, Patonised.

Two No. 10 BEEHIVE or QUEEN BEE needles, measured by BEEHIVE gauge. A crochet hook.  $\frac{3}{4}$  yard ribbon.

**MEASUREMENTS:** To fit 16 [18] inch chest. Length, 10 [11] ins. Sleeve seam,  $2\frac{1}{4}$  [ $2\frac{1}{2}$ ] ins.

**TENSION:**  $7\frac{1}{2}$  sts. and  $9\frac{1}{2}$  rows to one square inch on No. 10 needles, measured over stocking stitch.

*See page 2 for how to check your Tension, and Abbreviations.*



Commencing at Front, cast on 61 [69] sts.

**1st row**—K.2, \* P.1, K.1, rep. from \* to last st., K.1.

**2nd row**—K.1, \* P.1, K.1, rep. from \* to end.

Work in rib as on last 2 rows until work measures 9 [ $9\frac{3}{4}$ ] ins. from beg., finishing at end of a 2nd row.

**Next row**—Rib 18 [20], cast off 25 [29], rib to end.

Work 2 [ $2\frac{1}{2}$ ] ins. on first group of 18 [20] sts., finishing at neck edge.

Break off wool.

Rejoin wool at neck edge to remaining group of 18 [20] sts. and work to match other half, finishing at neck edge. Cast on 25 [29] sts. at end of last row, rib across 18 [20] sts. on left-hand needle.

Complete Back to match Front.

Cast off in rib.

## SLEEVES

Cast on 59 [65] sts.

Work 1st and 2nd rows in rib as at commencement of Front.

Continue in rib, dec. 1 st. at both ends of next and every alt. row until 43 [47] sts. remain. Work 1 row. Cast off in rib.

## TO MAKE UP

Using a warm iron and damp cloth press lightly on wrong side.

Join side seam for  $6\frac{3}{4}$  [7] ins., join sleeve seams and stitch Sleeves into position. Using crochet hook, work 1 treble, 2 chain evenly round neck.

Thread ribbon through holes at neck.

Press seams.

# Pilch

**MATERIALS:** 2 oz. PATONS BEEHIVE Baby Wool, Patonised.

Two No. 10 BEEHIVE or QUEEN BEE needles, measured by BEEHIVE gauge.  $\frac{1}{2}$  yard elastic.

*You must use the P & B brand recommended above to be sure of a successful result.*

**MEASUREMENTS:** Length from top to lower edge at centre,  $8\frac{1}{2}$  ins.

*These instructions apply to the above measurements only; adaptations to other sizes are not available.*

**TENSION:**  $7\frac{1}{2}$  sts. and  $9\frac{1}{2}$  rows to one square inch on No. 10 needles, measured over stocking stitch. *See page 2 for how to check your Tension, and Abbreviations.*

Commencing at Front, cast on 81 sts.  
continued below

Next row—Work in rib to end.

Proceed as follows:—

**1st row**—Cast off 36 sts. loosely in rib, work to end.

**2nd row**—Cast off 36 sts. loosely in rib, work to end, cast on 36 sts. loosely.

**3rd row**—Rib to end, cast on 36 sts. loosely.

**4th and 5th rows**—Rib to last 36 sts., turn.

**6th and 7th rows**—Rib to last 30 sts., turn.

Continue in rib working 6 sts. more on every row until all sts. are worked on to one needle again.

Work 52 rows in rib without shaping.

Proceed as follows:—

**1st and 2nd rows**—Rib to last 8 sts., turn.

**3rd and 4th rows**—Rib to last 16 sts., turn.

Continue in this manner working 8 sts. less at end of every row until 21 sts. remain in centre, turn.

## Over-the-head vest & pilch in ribbing

**1st row**—K.2, \* P.1, K.1, rep. from \* to last st., K.1.

**2nd row**—K.1, \* P.1, K.1, rep. from \* to end.

**3rd and 4th rows**—As 1st and 2nd.

**5th row**—K.2, \* w.fwd., K.2 tog., P.1, K.1, rep. from \* to last 3 sts., w.fwd., K.2 tog., K.1.

**6th to 8th row**—As 2nd to 4th.

**9th row**—K.2, \* inc. in next st. purlwise, K.1, P.1, K.1, rep. from \* to last 3 sts., inc. in next st. purlwise, K.2 (101 sts.).

**10th row**—K.1, \* P.1, K.1, rep. from \* to end.

Rep. 1st and 2nd rows 27 times more.

Proceed as follows:—

**1st and 2nd rows**—Rib to last 6 sts., turn.

**3rd and 4th rows**—Rib to last 12 sts., turn.

Continue in this manner working 6 sts. less on every row until 29 sts. remain in centre, turn.

Next row—Work in rib to end.

Next row—Rib all across.

Proceed as follows:—

**1st row**—K.2, \* P.2 tog., P.1, K.1, P.1, K.2 tog., K.1, P.1, K.1, rep. from \* to last 9 sts., P.2 tog., P.1, K.1, P.1, K.2 tog., K.2 (81 sts.).

**2nd and 4th rows**—K.1, \* P.1, K.1, rep. from \* to end.

**3rd row**—K.2, \* P.1, K.1, rep. from \* to last st., K.1.

**5th row**—K.2, \* w.fwd., K.2 tog., P.1, K.1, rep. from \* to last 3 sts., w.fwd., K.2 tog., K.1.

Rep. 2nd and 3rd rows twice.

Cast off in rib.

### TO MAKE UP

Using a warm iron and damp cloth, press lightly on wrong side. Join side seams.

Thread elastic through holes at waist.

Press seams.



*Ear  
warming  
hat  
in  
Quickerknit*



**MATERIALS:** 1 oz. PATONS QUICKERKNIT Baby Wool, Patonised.  
Two No. 9 BEEHIVE or QUEEN BEE needles, measured by BEEHIVE gauge.  
One press stud.

*You must use Quickerknit to be sure of a successful result.*

**TENSION:**  $6\frac{1}{2}$  sts. and  $8\frac{1}{2}$  rows to one square inch on No. 9 needles, measured over stocking stitch. *See page 2 for how to check your Tension, and Abbreviations.*

**FIRST EAR PIECE**

Cast on 4 sts. (for strap).  
K.30 rows.

Shape for ear piece as follows:—

- \*\* 1st row—Inc. in first st., K.1, inc. in next st., K.1.
- 2nd row—K.
- 3rd row—Inc. in first st., K.3, inc. in next st., K.1.
- 4th row—K.
- 5th row—Inc. in first st., K. to last 2 sts., inc. in next st., K.1.
- 6th row—K.

Work 5th and 6th rows 3 times more (16 sts.).  
K. 12 rows.  
Slip sts. on to a length of wool and leave.

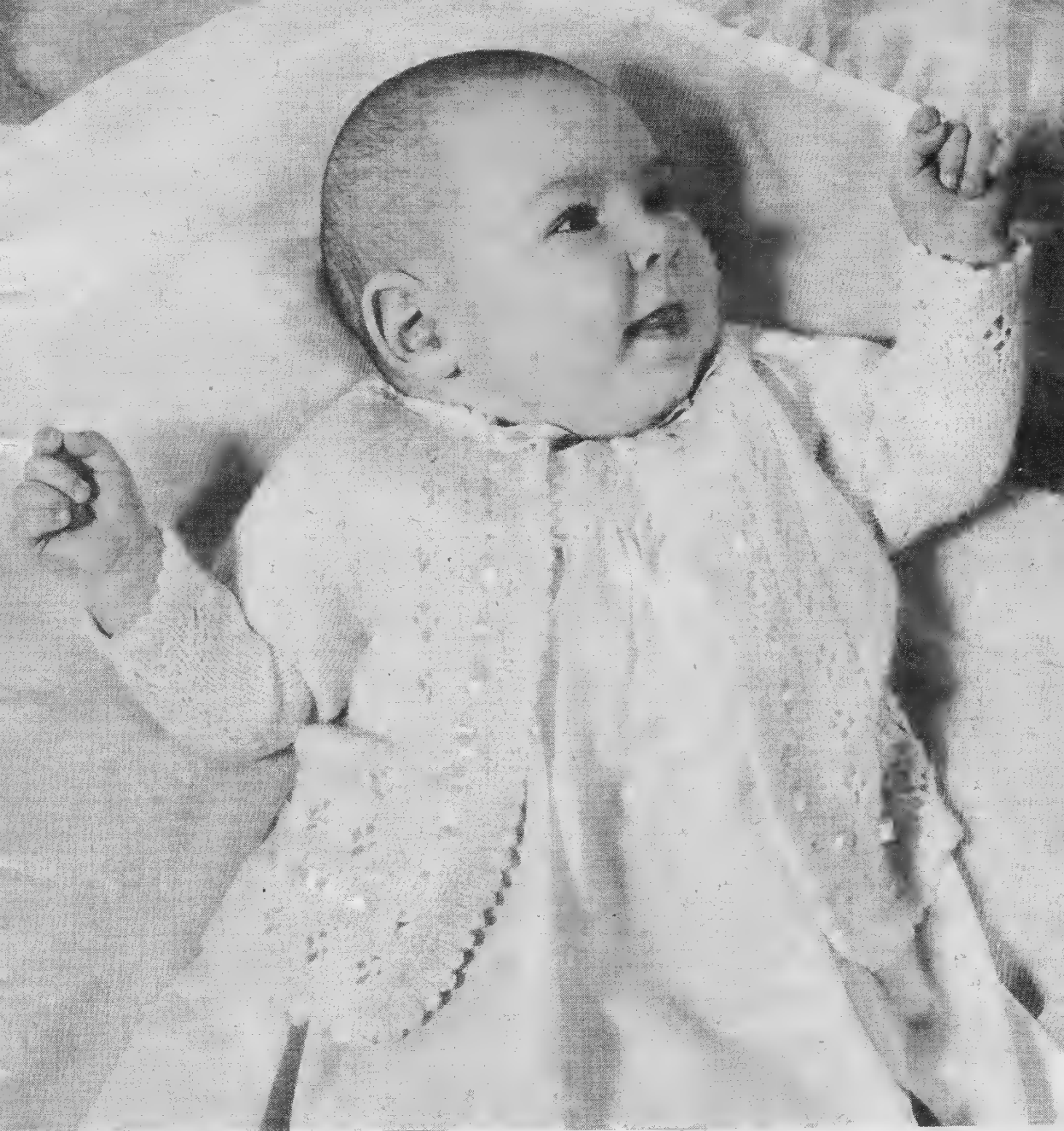
**SECOND EAR PIECE**

Cast on 4 sts.  
Work as First Earpiece from \*\* to end.

**MAIN PART**

Cast on 13 sts., K. across these sts., K. across first group of 16 sts. of ear piece, cast on 25 sts. and K. across second group of 16 sts., cast on 13 sts. (83 sts.).  
K.1 row.  
Proceed in patt. as follows:—  
1st row—\* K.2, K.1 wrapping wool round needle twice (this counts as 1 st. throughout the instruction), rep. from \* to last 2 sts., K.2.  
2nd row—\* K.2, w.ft., sl.1. purlwise slipping both loops off needle, w.b., rep. from \* to last 2 sts., K.2.  
3rd row—\* P.2, w.b., sl.1 purlwise, w.ft., rep. from \* to last 2 sts., P.2.  
4th row—\* P.2, P.1 wrapping wool round needle twice, rep. from \* to last 2 sts., P.2.

continued on page 31



*Raglan Frilly*

decorative  
matinee coat  
in Baby Wool

**MATERIALS:** 2 oz. PATONS BEEHIVE Baby Wool, Patonised.  
Two No. 11 BEEHIVE or QUEEN BEE needles, measured by BEEHIVE gauge.  
2 yards narrow ribbon.

*You must use the P & B brand recommended above to be sure of a successful result.*

**MEASUREMENTS:** To fit 17-19 inch chest. Length, 11 ins. Sleeve seam, 5½ ins.

*These instructions apply to the above measurements only; adaptations to other sizes are not available.*

**TENSION:** 8 sts. and 10 rows to one square inch on No. 11 needles, measured over stocking stitch. *See page 2 for how to check your Tension, and Abbreviations.*

## BACK

Using the two needle method, cast on 74 sts.

\*\* Work picot hem as follows:—

1st row—K.

2nd row—P.

3rd and 4th rows—As 1st and 2nd.

5th row—K.1, \* K.2 tog., w.fwd., rep. from \* to last st., K.1.

6th row—P.

7th to 10th row—Rep. 1st and 2nd rows twice.

11th row—Make hem by knitting tog. one st. from needle and one loop from cast-on edge all across row.

12th row—\* K.1, P.1, rep. from \* to last 2 sts., K.2 (thus forming ridge).

Proceed in patt. as follows:—

1st row—K.

2nd and alt. rows—K.1, P. to last st., K.1.

3rd row—K.3, \* K.2 tog., w.fwd., K.4, rep. from \* to last 5 sts., K.2 tog., w.fwd., K.3.

5th row—K.2, \* K.2 tog., w.fwd., K.1, w.fwd., K.2 tog.t.b.l., K.1, rep. from \* to end.

7th and 8th rows—As 3rd and 4th.

9th row—K.

10th row—\* K.1, P.1, rep. from \* to last 2 sts., K.2.

11th row—K.

12th row—As 2nd row.

13th row—K. \*\*

14th row—K.1, \* P.1, w.r.n., P.2 tog., rep. from \* to last st., K.1.

15th and 17th rows—K.

16th row—As 2nd row.

18th row—As 10th row.

19th to 29th row—As 1st to 11th.

30th row—K.1, P. to last st., K.1.

Proceed in stocking stitch until work measures  $6\frac{1}{2}$  ins. from lower edge, finishing at end of a P. row.

Shape raglan armholes as follows:—

1st and 2nd rows—Cast off 3, work to end.

3rd row—K.1, K.2 tog.t.b.l., K. to last 3 sts., K.2 tog., K.1.

4th row—K.1, P. to last st., K.1.

Rep. 3rd and 4th rows 21 times more (24 sts.).

Cast off.

## RIGHT FRONT

Using the two needle method, cast on 38 sts.

Work as Back from \*\* to \*\*.

Continue as follows:—

14th row—K.1, \* w.r.n., P.2 tog., P.1, rep. from \* to last st., K.1.

15th and 17th rows—K.

16th row—K.1, P. to last st., K.1.

18th row—\* K.1, P.1, rep. from \* to last 6 sts., P.2, w.r.n., P.2 tog., P.1, K.1.

19th row—K.6, P.1, K. to end.

20th row—As 16th row.

21st row—K.6, P.1, \* K.2, K.2 tog., w.fwd., K.2, rep. from \* to last st., K.1.

22nd row—K.1, P. to last 4 sts., w.r.n., P.2 tog., P.1, K.1.

23rd row—K.6, P.1, \* K.1, K.2 tog., w.fwd., K.1, w.fwd., K.2 tog.t.b.l., rep. from \* to last st., K.1.

24th row—As 16th row.

25th and 26th rows—As 21st and 22nd.

27th row—As 19th row.

28th row—\* K.1, P.1, rep. from \* to last 14 sts., P.13, K.1.

29th row—K.6, P.1, K.7, P.1, K. to end.

30th row—K.1, P. to last 4 sts., w.r.n., P.2 tog., P.1, K.1.

31st row—K.6, P.1, K.2, K.2 tog., w.fwd., K.3, P.1, K. to end.

32nd row—As 16th row.

33rd row—K.6, P.1, K.1, K.2 tog., w.fwd., K.1, w.fwd., K.2 tog.t.b.l., K.1, P.1, K. to end.

34th row—As 30th row.

35th row—K.6, P.1, K.2, K.2 tog., w.fwd., K.3, P.1, K. to end.

36th row—As 16th row.

37th row—As 29th row.

38th row—As 30th row.

Keeping front border correct, continue until work measures same as Back to armhole shaping, finishing so that wrong



side of work will be facing when working next row.

**Shape raglan armhole as follows:—**

**1st row**—Cast off 3, work to end.

**2nd row**—Work to last 3 sts., K.2 tog., K.1.

**3rd row**—K.1, P.1, work to end.

Rep. 2nd and 3rd rows 15 times more (19 sts.).

**Shape neck** by casting off 7 sts. at beg. of next row, then dec. 1 st. at neck edge on every row, at the same time dec. 1 st. at armhole edge as before on every alt. row until 4 sts. remain.

Continue without further dec. at neck edge but still dec. at armhole edge as before until 1 st. remains.

Work 1 row.

Fasten off.

### LEFT FRONT

Using the two needle method, cast on 38 sts.

Work 1st to 11th rows incl. of picot hem as on Back.

**Next row**—K.2, \* P.1, K.1, rep. from \* to end (thus forming ridge).

Proceed as follows:—

**1st row**—K.

**2nd and alt. rows**—K.1, P. to last st., K.1.

**3rd row**—\* K.2, K.2 tog., w.fwd., K.2, rep. from \* to last 2 sts., K.2.

**5th row**—\* K.1, K.2 tog., w.fwd., K.1, w.fwd., K.2 tog.t.b.l., rep. from \* to last 2 sts., K.2.

**7th and 8th rows**—As 3rd and 4th.

**9th and 11th rows**—K.

**10th row**—K.2, \* P.1, K.1, rep. from \* to end.

**12th row**—K.1, P. to last st., K.1.

**13th row**—K.

**14th row**—K.1, P.2, \* w.r.n., P.2 tog., P.1, rep. from \* to last 2 sts., w.r.n., P.2 tog.

**15th and 17th rows**—K.

**16th row**—K.1, P. to last st., K.1.

**18th row**—K.1, P.2, w.r.n., P.2 tog., P.2, \* K.1, P.1, rep. from \* to last st., K.1.

**19th row**—K. to last 7 sts., P.1, K.6.

**20th row**—As 16th row.

**21st row**—\* K.2, K.2 tog., w.fwd., K.2, rep. from \* to last 8 sts., K.1, P.1, K.6.

**22nd row**—K.1, P.2, w.r.n., P.2 tog., P. to last st., K.1.

**23rd row**—\* K.1, K.2 tog., w.fwd., K.1, w.fwd., K.2 tog.t.b.l., rep. from \* to last 8 sts., K.1, P.1, K.6.

**24th row**—As 16th row.

**25th and 26th rows**—As 21st and 22nd.

**27th row**—As 19th row.

**28th row**—K.1, P.13, \* P.1, K.1, rep. from \* to end.

Keeping border correct, complete to match Right Front reversing all shapings, noting that dec. at armhole edge will be worked "t.b.l."

### SLEEVES

Using the two needle method, cast on 32 sts.

Work as Back until 11th row of patt. has been worked.

**Next row**—K.1, P.4, (inc. in next st., P.2) 7 times, inc. in next st., P.4, K.1 (40 sts.).

Proceed in stocking stitch, inc. 1 st. in first st. and last st. but one on next and every following 5th row until there are 54 sts.

Continue on these sts. until work measures 5½ ins. from lower edge.

**Shape top as follows:—**

**1st and 2nd rows**—Cast off 3, work to end.

**3rd row**—K.1, K.2 tog.t.b.l., K. to last 3 sts., K.2 tog., K.1.

**4th row**—K.1, P. to last st., K.1.

Rep. 3rd and 4th rows 21 times more (4 sts.).

Cast off.

**Right Front picot edge.**

With right side of work facing knit up 58 sts. along Right Front edge, from top of first ridge at picot edge.

**Next row**—\* K.1, P.1, rep. from \* to end.

Work 1st to 10th rows incl. of Picot hem as on Back.

Cast off.

**Left Front picot edge.**

Work to match Right Front picot edge.

continued on page 50



**MATERIALS:** 8 oz. PATONS BEEHIVE Fingering 3-ply, Patonised.  
Two No. 10 BEEHIVE or QUEEN BEE needles, measured by BEEHIVE gauge.

*You must use the P & B brand recommended above to be sure of a successful result.*

**MEASUREMENT:** 30 ins. square (approx.).

**TENSION:**  $7\frac{1}{2}$  sts. and  $9\frac{1}{2}$  rows to one square inch on No. 10 needles, measured over stocking stitch. *See page 2 for how to check your Tension, and Abbreviations.*

Cast on 231 sts.

**1st to 10th row—\*** K.1, P.1, rep. from \* to last st., K.1.

continued below

Rep. this row 8 times more.  
Cast off.

## LACE BORDER

Cast on 14 sts.

**1st row—**W.r.n., P.2 tog., K.1, (w.fwd., K.2 tog.t.b.l.) twice, K.4, w.fwd., K.2 tog.t.b.l., K.1.

**2nd row—**Sl.1, K.2, w.fwd., K.2 tog.t.b.l., K.1, P.2 tog.t.b.l., w.r.n., P.2 tog.t.b.l., w.o.n., K.4.

**3rd row—**W.r.n., P.2 tog., K.3, (w.fwd., K.2 tog.t.b.l.) twice, K.2, w.fwd., K.2 tog.t.b.l., K.1.

**4th row—**Sl.1, K.2, w.fwd., K.2 tog.t.b.l., K.2, w.r.n., P.2 tog., w.o.n., K.5.

**5th row—**W.r.n., P.2 tog., K.3, w.fwd., K.2 tog., w.fwd., K.5, w.fwd. K.2 tog.t.b.l., K.1.

**6th row—**Sl.1, K.2, w.fwd., K.2 tog.t.b.l., K.4, w.r.n., P.2 tog., w.o.n., K.5.

# 'Cover my defenceless head . . . . .'

shawl in three-ply — thirty inches square

NEET 1009

Proceed for moss stitch border and lace centre as follows:—

**1st to 6th row—**(K.1, P.1) 3 times, K.1, (K.1, w.fwd., K.4, P.3 tog., K.4, w.fwd.) 18 times, K.1, (K.1, P.1) 3 times, K.1.

**7th to 12th row—**(K.1, P.1) 3 times, K.1, P.2 tog., (K.4, w.fwd., K.1, w.fwd., K.4, P.3 tog.) 17 times, K.4, w.fwd., K.1, w.fwd., K.4, P.2 tog., (K.1, P.1) 3 times, K.1.

These 12 rows form the patt.

Rep. rows 1 to 12 incl. 20 times more, then rows 1 to 10 incl. once.

**Next row—\*** K.1, P.1, rep. from \* to last st., K.1.

**7th row—**W.r.n., P.2 tog., K.4, (w.fwd., K.2 tog.t.b.l.) twice, K.4, w.fwd., K.2 tog.t.b.l., K.1.

**8th row—**Sl.1, K.2, w.fwd., K.2 tog.t.b.l., K.1, P.2 tog.t.b.l., w.r.n., P.2 tog.t.b.l., w.o.n., K.7.

**9th row—**W.r.n., P.2 tog., K.6, (w.fwd., K.2 tog.t.b.l.) twice, K.2, w.fwd., K.2 tog.t.b.l., K.1.

**10th row—**Sl.1, K.2, w.fwd., K.2 tog.t.b.l., K.2, w.r.n., P.2 tog., w.o.n., K.8.

**11th row—**W.r.n., P.2 tog., K.6, w.fwd., K.2 tog., w.fwd., K.5, w.fwd., K.2 tog.t.b.l., K.1.

**12th row—**Sl.1, K.2, w.fwd., K.2 tog.t.b.l., K.4, w.r.n., P.2 tog., w.o.n., K.8.

continued on page 50

# A first fashion

style conscious four-ply cardigan in  
two sizes with gay embroidery

**MATERIALS:** 3 oz. PATONS BEEHIVE Fingering 4-ply, Patonised, or PATONS NYLOX Knitting 4-ply, Patonised. Oddments of wool for embroidery.

Two No. 12 and two No. 10 BEEHIVE or QUEEN BEE needles, measured by BEEHIVE gauge. Four buttons.

*You must use the P & B brands recommended above to be sure of a successful result.*

**MEASUREMENTS:** To fit 18 [20] inch chest. Length, 8½ [9½] ins. Sleeve seam, 5 [6] ins.

*These instructions apply to the above measurements only; adaptations to other sizes are not available.*

**TENSION:** 7 sts. and 9 rows to one square inch on No. 10 needles, measured over stocking stitch. *See page 2 for how to check your Tension, and Abbreviations.*

## BACK

Using No. 12 needles and the two needle method, cast on 63 [70] sts.

\*\* Work 9 rows in stocking stitch.

Next row—K. (thus forming ridge).

Work 10 rows in stocking stitch.

Next row—**Make hem** by knitting tog. one st. from needle and one loop from cast-on edge all across row.

**Change to No. 10 needles** and knitting 1 st. at both ends of every row, commencing with a P. row, proceed in stocking stitch until work measures 4¾

[5½] ins. from lower edge, finishing at end of a P. row.\*\*

**Shape armholes** by casting off 3 [4] sts. at beg. of next 2 rows. Dec. 1 st. at both ends of next and every alt. row until 49 [52] sts. remain.

Continue on these sts. until work measures 3¾ [4] ins. from beg. of armhole shaping.

**Shape shoulders** by casting off 8 [8] sts. at beg. of next 2 rows, 8 [9] sts. at beg. of following 2 rows.

Cast off.

## RIGHT FRONT

Using No. 12 needles and the two needle method, cast on 29 [33] sts.

Work as Back from \*\* to \*\*.

**Shape front slope and armhole** as follows:  
**1st row**—K.1, sl.1, K.1, p.s.s.o., K. to end.

**2nd row**—Cast off 3 [4], P. to last st., K.1.

**3rd row**—K. to last 2 sts., K.2 tog.

Continue dec. 1 st. at armhole edge on every alt. row until 4 [5] dec. **in all** have been worked, **at the same time** dec. 1 st. at front edge as before on every 4th row from previous dec. until 16 [17] sts. remain.

Continue on these sts. until work measures same as Back up to shoulder shaping, finishing at armhole edge.

**Shape shoulder** by casting off 8 [8] sts. at beg. of next row.

Work 1 row. Cast off.



### LEFT FRONT

Work to match Right Front reversing all shapings, **noting** that K.2 tog. will be worked at front slope in place of sl.1, K.1, p.s.s.o.

SC73

### SLEEVES

Using No. 12 needles and the two needle method, cast on 32 [34] sts. Work 9 rows in stocking stitch. **Next row—K.** (thus forming ridge).

21

Work 10 rows in stocking stitch.

**Next row**—Make hem by knitting tog. one st. from needle and one loop from cast-on edge all across row.

**Next row**—P.3 [2], (inc. in next st., P.4 [6]) 5 [4] times, inc. in next st., P. to end (38 [39] sts.).

**Change to No. 10 needles** and knitting 1 st. at both ends of every row, proceed in stocking stitch, inc. 1 st. in first st. and last st. but one on 5th and every following 8th row until there are 46 [49] sts.

Continue on these sts. until work measures 5 [6] ins. from lower edge.

**Shape top** by casting off 2 sts. at beg. of next 2 rows then dec. 1 st. at both ends of next and every alt. row until 24 [25] sts. remain, every row until 18 [19] sts. remain.

Cast off.

### FRONT BAND

Using a back-stitch seam, join shoulders of Back and Fronts.

Using No. 12 needles, with right side of work facing, commencing at lower edge of Right Front, knit up 33 [39] sts. to beg. of front slope shaping, 29 [31] sts. to shoulder seam, 17 [18] sts. across back of neck, 29 [31] sts. to end of front slope shaping, 33 [39] sts. to end of Left Front (141 [158] sts.).

**1st row**—P.

**2nd row**—K.

**3rd and 4th rows**—As 1st and 2nd.

**5th row**—P.

**6th row**—K.3, (K.2 tog., w.fwd., K.7 [9] sts.) 3 times, K.2 tog., w.fwd., K. to end.

**7th to 10th row**—Rep. 1st and 2nd rows twice.

**11th row**—K. (thus forming ridge).

**12th to 19th row**—As 2nd to 9th row.

Cast off.

### TO MAKE UP

With wrong side of work facing, block each piece by pinning out round edges. Press each piece using a warm iron and damp cloth.



Using oddments, work sprays of French knots and lazy daisies on Fronts (see diagram and photograph).

Join side and sleeve seams and stitch Sleeves into position.

Fold Front Band at ridge to wrong side of work and stitch into position to form hem.

Attach buttons. Press seams.



Dreamland Express—continued from page 11

### TO COMPLETE MAKE UP

Using a back-stitch seam, join side seams.

Cut length of petersham binding for inside end of flap, cutting buttonholes to match buttonholes in fabric and work round in buttonhole stitch. Stitch

to inside of flap, matching buttonholes. Turn up flap and mark position of buttons, strengthening fabric behind buttons with petersham binding. Attach buttons.

Stitch zipp into front opening.

Press seams.



*Wrap-over vest  
and pilch*

Instructions start over page

# Vest

**MATERIALS:** 2 oz. PATONS BEEHIVE Baby Wool, Patonised.

Two No. 10 BEEHIVE or QUEEN BEE needles, measured by BEEHIVE gauge. Length of ribbon.

*You must use the P & B brand recommended above to be sure of a successful result.*

**MEASUREMENTS:** To fit 16 [18] inch chest. Length, 9½ [10] ins.

*These instructions apply to the above measurements only; adaptations to other sizes are not available.*

**TENSION:** 7½ sts. and 9½ rows to one square inch on No. 10 needles, measured over stocking stitch. *See page 2 for how to check your Tension, and Abbreviations.*

## RIGHT FRONT

Cast on 54 [59] sts.

K. 6 rows.

Next row—K.

Next row—K.1, P. to last 4 sts., K.4.

Work these 2 rows 22 [24] times more.

**Commence front slope and shape sleeve as follows:—**

**1st row**—K.4, K.2 tog., K. to last 2 sts., inc. in next st., K.1.

**2nd row**—K.1, P. to last 6 sts., P.2 tog., K.4.

**3rd to 10th row**—Rep. 1st and 2nd rows 4 times.

**11th row**—K.4, K.2 tog., K. to end, cast on 11 [13] sts.

**12th row**—K.4, P. to last 6 sts., P.2 tog., K.4 (58 [65] sts.).

\*\* Knitting 4 sts. at both ends of every row, still dec. 1 st. at front edge on every row until 38 [43] sts. remain.

Work 10 [10] rows without shaping \*\*.

Break off wool and slip sts. on to a length of wool and leave.

## LEFT FRONT AND BACK

Cast on 54 [59] sts.

K. 6 rows.

Next row—K.

Next row—K.4, P. to last st., K.1.

Work these 2 rows 22 [24] times more.

**Commence front slope and shape sleeve as follows:—**

**1st row**—Inc. in first st., K. to last 6 sts., K.2 tog., K.4.

**2nd row**—K.4, P.2 tog., P. to last st., K.1.

**3rd to 9th row**—Rep. 1st and 2nd rows 3 times, then 1st row once.

**10th row**—K.4, P.2 tog., P. to end, cast on 11 [13] sts.

**11th row**—K. to last 6 sts., K.2 tog., K.4.

**12th row**—K.4, P.2 tog., P. to last 4 sts., K.4 (58 [65] sts.).

Work as Right Front from \*\* to \*\*.

Next row—K. to end, cast on 16 [18] sts. for back of neck, slip sts. of Right Front on to left-hand needle (neck edge at point of needle) K. across these sts. (92 [104] sts.).

Next row—K.4, P.30 [35], K.24 [26], P. to last 4 sts., K.4.

Next row—K.

Work these 2 rows 3 [3] times more.

Knitting 4 sts. at both ends of every row and remainder of sts. in stocking stitch work 23 [25] rows.

**Shape sleeves** by casting off 11 [13] sts. at beg. of next 2 rows.

Dec. 1 st. at both ends of 3rd and every alt. row until 60 [68] sts. remain.

Work 46 [50] rows in stocking stitch.

K. 5 rows.

Cast off.

## TO MAKE UP

With wrong side of work facing, block each piece by pinning out round edges.

Press each piece using a warm iron and damp cloth.

Join side and sleeve seams, leaving 1 inch open at right side below sleeve, through which to thread ribbon.

Stitch a length of ribbon to each Front just below commencement of shaping.

Press seams.



# Washing Babies' Handknits—see page 49

## Pilch

**MATERIALS:** 1 oz. PATONS BEEHIVE Baby Wool, Patonised.

Two No. 10 BEEHIVE or QUEEN BEE needles, measured by BEEHIVE gauge. Length of elastic.

*You must use the P & B brand recommended above to be sure of a successful result.*

**MEASUREMENTS:** Length from top to lower edge at centre Front,  $8\frac{1}{2}$  ins.

*These instructions apply to the above measurements only; adaptations to other sizes are not available.*

**TENSION:**  $7\frac{1}{2}$  sts. and  $9\frac{1}{2}$  rows to one square inch on No. 10 needles, measured over stocking stitch. See page 2 for how to check your Tension, and Abbreviations.

Commencing at Front, cast on 56 sts.

1st to 4th row—K.2, \* P.1, K.1, rep. from \* to end.

5th row—K.2, \* w.fwd., K.2 tog., P.1, K.1, rep. from \* to last 2 sts., w.fwd., K.2 tog.

6th to 12th row—As 1st row.

13th row—K.6, \* inc. in next st., K.13, rep. from \* to last 8 sts., inc. in next st., K.7 (60 sts.).

K. 63 rows.

Divide sts. for legs as follows:—

1st row—K.19, turn.

2nd row—K.1, K.2 tog., K.16.

3rd row—K.15, K.2 tog., K.1.

4th row—K.1, K.2 tog., K.14.

Continue dec. in this manner until 2 sts. remain, K.2 tog.

Fasten off.

Rejoin wool and K. across 41 sts. on needle.

Proceed as follows:—

1st row—K.16, K.2 tog., K.1, turn.

2nd row—K.1, K.2 tog., K.15.

3rd row—K.14, K.2 tog., K.1.

4th row—K.1, K.2 tog., K.13.

Continue dec. in this manner until 2 sts. remain, K.2 tog.

Fasten off.

Rejoin wool and K.13 rows on remaining 22 sts.

Inc. 1 st. at both ends of next and every alt. row until there are 60 sts.

K. 81 rows.

Shape Back as follows:—

1st and 2nd rows—K. to last 3 sts., turn.

3rd and 4th rows—K. to last 6 sts., turn.

5th and 6th rows—K. to last 9 sts., turn.

7th and 8th rows—K. to last 12 sts., turn.

9th and 10th rows—K. to last 15 sts., turn.

11th and 12th rows—K. to last 18 sts., turn.

13th and 14th rows—K. to end.

15th row—K.6, \* K.2 tog., K.13, rep. from \* to last 9 sts., K.2 tog., K.7.

16th to 22nd row—K.2, \* P.1, K.1, rep. from \* to end.

23rd row—K.2, \* w.fwd., K.2 tog., P.1, K.1, rep. from \* to last 2 sts., w.fwd., K.2 tog.

24th to 27th row—As 16th row.

Cast off in rib.

## TO MAKE UP

Omitting ribbing, with wrong side of work facing block fabric by pinning out round edges.

Omitting ribbing press fabric using a warm iron and damp cloth.

Join side seams as far as shapings.

Thread elastic through holes at waist.

Press seams.

## Coat

**MATERIALS:** 5 oz. PATONS QUICKERKNIT Baby Wool, Patonised.

Two No. 9 and two No. 7 BEEHIVE or QUEEN BEE needles, measured by BEEHIVE gauge. Four buttons.

*You must use Quickerknit to be sure of a successful result.*

**MEASUREMENTS:** Width, 20 ins.  
Length, 13 ins. (excluding neckband).  
Sleeve seam, 5½ ins.

*These instructions apply to the above measurements only; adaptations to other sizes are not available.*

Change to No. 9 needles and proceed as follows:—

**Next row**—K.1, \* P.2 tog., P.3 tog., (P.2 tog.) 3 times, rep. from \* to last 9 sts., P.2 tog., P.3 tog., P.2 tog., P.1, K.1 (21 sts.).

Work 5 rows in moss stitch.

**Next row**—K.1, P.1, (inc. in next st. purlwise, P.2) 5 times, inc. in next st., P.2, K.1 (27 sts.).

Change to No. 7 needles and shape raglan armhole as follows:—

**1st row**—K.1, \* P.2, K.4, rep. from \* to last 2 sts., P.1, K.1.

**2nd row**—Cast off 2, P. to last st., K.1.

**3rd row**—\* K.4, P.2, rep. from \* to last 7 sts., K.4, K.2 tog., K.1.

**4th row**—K.1, P. to last st., K.1.

## Main Event

Four-piece Quickerknit pram set, coat, pull-ups, helmet and mitts

**TENSION:** 5½ sts. and 7½ rows to one square inch on No. 7 needles, measured over stocking stitch. *See page 2 for how to check your Tension, and Abbreviations.*

### RIGHT FRONT

Using No. 7 needles, cast on 43 sts.

Work 6 rows in moss stitch (every row \* K.1, P.1, rep. from \* to last st., K.1).

Proceed in **patt.** as follows:—

**1st row**—K.1, \* P.2, K.4, rep. from \* to end.

**2nd row**—K.1, P. to last st., K.1.

**3rd row**—\* K.4, P.2, rep. from \* to last st., K.1.

**4th row**—K.1, P. to last st., K.1.

These 4 rows form the **patt.**

Continue in **patt.** until work measures 7½ ins. from beg., finishing so that **wrong** side of work will be facing when working next row.

Keeping **patt.** correct throughout, continue dec. 1 st. at armhole edge as before on next and every alt. row until 11 sts. remain.

Work 1 row.

**Shape neck** as follows:—

**1st row**—Cast off 3, **patt.** to last 3 sts., K.2 tog., K.1.

Still dec. at armhole edge on every alt. row, dec. 1 st. at neck edge on next 3 rows (3 sts.).

Continue without further dec. at neck edge but still dec. at armhole edge on every alt. row until 1 st. remains.

Work 1 row. Fasten off.

### LEFT FRONT

Using No. 7 needles, cast on 43 sts.

Work 6 rows in moss stitch.

Proceed in **patt.** as follows:—

**1st row**—\* K.4, P.2, rep. from \* to last st., K.1.



**2nd row**—K.1, P. to last st., K.1.

**3rd row**—K.1, \* P.2, K.4, rep. from \* to end.

**4th row**—K.1, P. to last st., K.1.

These 4 rows form the patt.

Continue in patt. until work measures  $7\frac{1}{2}$  ins. from beg., finishing so that **wrong** side of work will be facing when working next row.

**Change to No. 9 needles** and proceed as follows:—

**Next row**—K.1, P.1, \* P.2 tog., P.3 tog., (P.2 tog.) 3 times, rep. from \* to last 8 sts., P.2 tog., P.3 tog., P.2 tog., K.1 (21 sts.).

Work 5 rows in moss stitch.

**Next row**—K.1, P.1, (inc. in next st., P.2) 5 times, inc. in next st., P.2, K.1 (27 sts.).

**Change to No. 7 needles** and shape raglan armhole as follows:—

**1st row**—Cast off 2, (there now being 1 st. on needle after cast-off), K.3, \* P.2, K.4, rep. from \* to last 3 sts., P.2, K.1.

**2nd row**—K.1, P. to last st., K.1.

**3rd row**—K.1, K.2 tog.t.b.l., \* K.4, P.2, rep. from \* to last 4 sts., K.4.

**4th row**—K.1, P. to last st., K.1.

Complete to match Right Front reversing all shapings.

## BACK

Using No. 7 needles, cast on 87 sts.

Work 6 rows in moss stitch, inc. 1 st. at end of last row (88 sts.).

Proceed in patt. as follows:—

**1st row**—K.1, \* P.2, K.4, rep. from \* to last 3 sts., P.2, K.1.

**2nd row**—K.1, P. to last st., K.1.

**3rd row**—\* K.4, P.2, rep. from \* to last 4 sts., K.4.

**4th row**—K.1, P. to last st., K.1.

These 4 rows form the patt.

Continue in patt. until work measures  $7\frac{1}{2}$  ins. from beg., finishing so that **wrong** side of work will be facing when working next row.

**Change to No. 9 needles** and proceed as follows:—

**Next row**—K.1, (P.2 tog.) 43 times, K.1 (45 sts.).

Work 5 rows in moss stitch.

**Next row**—K.1, P.1, (inc. in next st., P.3) 10 times, inc. in next st., P.1, K.1 (56 sts.).

**Change to No. 7 needles** and shape raglan armholes as follows:—

**1st row**—Cast off 2, (there now being 1 st. on needle after cast-off), K.3, \* P.2, K.4, rep. from \* to last 2 sts., P.1, K.1.

**2nd row**—Cast off 2, P. to last st., K.1.

**3rd row**—K.1, K.2 tog.t.b.l., \* K.4, P.2, rep. from \* to last 7 sts., K.4, K.2 tog., K.1.

**4th row**—K.1, P. to last st., K.1.

Keeping patt. correct throughout, continue dec. at both ends of next and every alt. row until 16 sts. remain.

Work 1 row. Cast off.

## SLEEVES

Using No. 9 needles, cast on 29 sts.

Work 11 rows in moss stitch.

**Next row**—Moss stitch 2, (inc. in next st., moss stitch 5) 4 times, inc. in next st., moss stitch to end (34 sts.).

**Change to No. 7 needles** and proceed in patt. as on Back, inc. 1 st. in first st. and last st. but one on 5th and every following 4th row until there are 44 sts.

Continue on these sts. until work measures  $5\frac{1}{2}$  ins. from beg., finishing so that right side of work will be facing when working next row.

**Shape top** by working 1st to 4th rows of raglan shaping as on Back.

Keeping patt. correct throughout, continue dec. 1 st. at both ends of next and every alt. row until 4 sts. remain.

Work 1 row. Cast off.

## RIGHT FRONT BAND

Using No. 9 needles, cast on 5 sts.

Proceed in moss stitch until work measures  $7\frac{3}{4}$  ins. from beg., finishing so that right side of work will be facing when working next row.

**Next row** (on which a buttonhole is worked)—K.1, P.2 tog., w.r.n., P.1, K.1. Continue in moss stitch working a buttonhole as on last row on every

14th row from previous buttonhole until 3 buttonholes in all have been worked.

Work 12 rows.

Slip these sts. on to a safety pin and leave.

### LEFT FRONT BAND

Omitting buttonholes, work to match Right Front Band, working 1 row less.

### TO MAKE UP

With wrong side of work facing block each piece by pinning out round edges, taking care not to stretch waist.

Press each piece very lightly using a warm iron and damp cloth.

Join side and sleeve seams and stitch Sleeves into position.

### NECKBAND

Slip sts. from top of Right Front Band on to a No. 9 needle, with right side of work facing using same needle, knit up 43 sts. round neck, work across sts. of Left Front Band (53 sts.).

Work 5 rows in moss stitch working a buttonhole as before on 2nd row.

Cast off in moss stitch.

Stitch Front Bands into position.

Attach buttons. Press seams.

## Pull-ups

**MATERIALS:** 4 oz. PATONS QUICKERKNIT Baby Wool, Patonised. Two No. 7 BEEHIVE or QUEEN BEE needles, measured by BEEHIVE gauge. Length of elastic.

*You must use Quickerknit to be sure of a successful result.*

**MEASUREMENTS:** Length at Front seam,  $8\frac{1}{2}$  ins.

**TENSION:**  $5\frac{1}{2}$  sts. and  $7\frac{1}{2}$  rows to one square inch on No. 7 needles, measured over stocking stitch. *See page 2 for how to check your Tension, and Abbreviations.*

**NOTE:** Figures in square brackets [ ] refer to Left Leg.

## RIGHT LEG

Cast on 61 sts.

Proceed in moss stitch as follows:—

**1st and 2nd rows**—\* K.1, P.1, rep. from \* to last st., K.1.

**3rd row**—\* K.1, P.1, w.r.n., P.2 tog., rep. from \* to last st., K.1.

**4th row**—As 1st row.

Work 4 [3] more rows in moss stitch.

**Shape back** in moss stitch as follows:—

**1st row**—Moss stitch 47, turn.

**2nd and alt. rows**—Moss stitch to end.

**3rd row**—Moss stitch 41, turn.

**5th row**—Moss stitch 35, turn.

Continue in this manner working 6 sts. less in moss stitch on every alt. row until the row "moss stitch 11 turn" has been worked.

Work 1 [2] rows in moss stitch, inc. 1 st. at end [beg.] of last row (62 sts.).

Proceed in patt. as follows:—

**1st row**—K.1, P.1, \* K.4, P.2, rep. from \* to last 6 sts., K.4, P.1, K.1.

**2nd row**—K.1, P. to last st., K.1.

**3rd row**—K.3, \* P.2, K.4, rep. from \* to last 5 sts., P.2, K.3.

**4th row**—K.1, P. to last st., K.1.

These 4 rows form the patt.

Continue in patt., inc. 1 st. at both ends of next and every following 10th row until there are 72 sts.

Continue on these sts. until work measures  $8\frac{1}{2}$  ins. from beg. (measured at short edge), finishing so that right side of work will be facing when working next row.

**Shape leg** by casting off 3 sts. at beg. of next 2 rows. Dec. 1 st. at both ends of next and every alt. row until 34 sts. remain.

Continue on these sts. until work measures 6 ins. from where sts. were cast-off (measured at centre of work), finishing so that right side of work will be facing when working next row.

**Divide for foot** as follows:—

**1st row**—Patt. 28 [19], turn.

**2nd row**—Patt. 13, turn.

Work 20 more rows in patt. on these 13 sts.

Break off wool.

Rejoin wool to inside edge of 15 [6] sts.

left, with right side of work facing knit up 11 sts. along side of foot, work across 13 sts. on needle as follows:—

K.5, K.2 tog., K.6, knit up 11 sts. along other side of foot, finally work across remaining 6 [15] sts. (55 sts.).

Work 5 rows in moss stitch.

Keeping moss stitch correct, shape foot as follows:—

1st row—Moss stitch 3 [19], P.2 tog., P.1, P.2 tog., moss stitch 23, P.2 tog., P.1, P.2 tog., moss stitch 19 [3].

2nd and alt. row—Moss stitch all across.

3rd row—Moss stitch 2 [18], K.2 tog., P.1, K.2 tog., moss stitch 21, K.2 tog., P.1, K.2 tog., moss stitch 18 [2].

5th row—Moss stitch 1 [17], P.2 tog., P.1, P.2 tog., moss stitch 19, P.2 tog., P.1, P.2 tog., moss stitch 17 [1].

Cast off.

## LEFT LEG

Work as Right Leg, noting that figures in square brackets should be worked.

## TO MAKE UP

With wrong side of work facing block each piece by pinning out round edges.

Press each piece very lightly using a warm iron and damp cloth.

Join Back, Front and Leg seams. Commencing at centre of dec. at toe, join foot seam, finishing at centre of dec. at heel.

Thread elastic through holes at waist.

Press seams.

## Mitts

**MATERIALS:** 1 oz. PATONS QUICKERKNIT Baby Wool, Patonised.

Two No. 9 BEEHIVE or QUEEN BEE needles, measured by BEEHIVE gauge.

*You must use Quickerknit to be sure of a successful result.*

**MEASUREMENT:** Length from top to lower edge,  $4\frac{1}{2}$  ins.

**TENSION:**  $6\frac{1}{2}$  sts. and  $8\frac{1}{2}$  rows to one square inch on No. 9 needles, measured over stocking stitch. *See page 2 for how to check your Tension, and Abbreviations.*

Cast on 33 sts.

Work 10 rows in moss stitch.

Next row—K.1, (P.1, w.r.n., P.2 tog., K.1, w.fwd., K.2 tog.) 5 times, P.1, K.1.

Work 1 row in moss stitch, inc. 1 st. at beg. of row (34 sts.).

Proceed in patt. as follows:—

1st row—\* K.4, P.2, rep. from \* to last 4 sts., K.4.

2nd row—K.1, P. to last st., K.1.

3rd row—K.1, \* P.2, K.4, rep. from \* to last 3 sts., P.2, K.1.

4th row—K.1, P. to last st., K.1.

These 4 rows form the patt.

Rep. 1st to 4th rows incl. 4 times more.

Keeping patt. correct, shape top as follows:—

1st row—(K.1, K.2 tog.t.b.l., patt.11, K.2 tog., K.1) twice.

2nd and alt. rows—K.1, P. to last st., K.1.

3rd row—(K.1, K.2 tog.t.b.l., patt.9, K.2 tog., K.1) twice.

Continue in patt., dec. in this manner until 18 sts. remain.

Cast off.

## TO MAKE UP

With wrong side of work facing press each piece very lightly using a warm iron and damp cloth.

Join seam.

Using 2 strands of wool 40 ins. long, make a twisted cord and thread through holes at wrist. Attach a small tassel to each end of cord.

## Cap

**MATERIALS:** 1 oz. PATONS QUICKERKNIT Baby Wool, Patonised.

Two No. 9 BEEHIVE or QUEEN BEE needles, measured by BEEHIVE gauge.

*You must use Quickerknit to be sure of a successful result.*

**TENSION:** 6½ sts. and 8½ rows to one square inch on No. 9 needles, measured over stocking stitch. *See page 2 for how to check your Tension, and Abbreviations.*

Cast on 19 sts.

Work 2 rows in moss stitch.

\*\* Work First section as follows:—

1st row—Inc. in first st. knitwise, \* P.1, K.1, rep. from \* to last 2 sts., inc. in next st. purlwise, K.1.

2nd row—K.2, \* P.1, K.1, rep. from \* to last st., K.1.

3rd row—Inc. in first st. knitwise, \* K.1, P.1, rep. from \* to last 2 sts., inc. in next st. knitwise, K.1.

4th row—\* K.1, P.1, rep. from \* to last st., K.1.

Rep. these 4 rows 4 times more, then 1st and 2nd rows once (41 sts.).

Next row—K.1, work 2 tog., moss stitch to last 3 sts., work 2 tog., K.1.

Continue dec. at both ends of every alt. row until 19 sts. remain.\*\*

Work 1 row.

Continue for Second section as follows:—

1st row—Inc. in first st. knitwise, \* P.1, K.1, rep. from \* to last 2 sts., inc. in next st. purlwise, K.1.

2nd row—K.2, \* P.1, K.1, rep. from \* to last st., K.1.

3rd row—Inc. in first st., knitwise, \* K.1, P.1, rep. from \* to last 2 sts., K.2.

4th row—K.2, \* P.1, K.1, rep. from \* to end.

Keeping moss stitch correct, continue inc. as on last 4 rows until there are 36 sts.

Work 1 row.

Work dec. as follows:—

1st row—K.1, P.2 tog., \* K.1, P.1, rep. from \* to last 3 sts., K.2 tog., K.1.

2nd row—K.2, \* P.1, K.1, rep. from \* to end.

3rd row—K.1, K.2 tog., \* P.1, K.1, rep. from \* to last st., K.1.

4th row—K.2, \* P.1, K.1, rep. from \* to last st., K.1.

Continue dec. in this manner until 19 sts. remain.

Work 1 row.

Work from \*\* to \*\* for Third section.

Work 1 row in moss stitch.

Cast off in moss stitch.

### TO MAKE UP

With wrong side of work facing, block each piece by pinning out round edges. Press each piece very lightly using a warm iron and damp cloth.

Join cast-off edge to cast-on edge.

Join sides of three equal parts to form Crown.

Using 3 strands of wool 40 ins. long make a twisted cord and attach to ear piece.

Attach a small tassel to end of cord.

Complete other side to match.

Press seams.



### Baby's Hat — continued from page 14

5th row—\* P.2, w.b., sl.1 purlwise, slipping both loops off needle, w.ft., rep. from \* to last 2 sts., P.2.

6th row—\* K.2, w.ft., sl.1 purlwise, w.b., rep. from \* to last 2 sts., K.2.

Rep. 1st to 6th rows incl. 4 times more.

Next row—K.13, K.2 tog., K.26, K.2 tog.t.b.l., K.26, K.2 tog., K. to end.

Shape crown as follows:—

1st row—(K.6, K.2 tog.) 10 times.

2nd and every alt. row—K.

3rd row—(K.5, K.2 tog.) 10 times.

Continue in this manner, dec. 10 sts.

on every alt. row until 10 sts. remain. Break off wool.

Thread wool through remaining sts., draw up and fasten off securely.

### TO MAKE UP

Using a warm iron and damp cloth press very lightly.

Join seam. Press seam.

Make a pom-pom and attach to centre of crown.

Attach press stud to end of strap and corner of earpiece.



**MATERIALS:** 3 oz. PATONS QUICKERKNIT Baby Wool, Patonised.

Two No. 10 and two No. 8 BEEHIVE or QUEEN BEE needles, measured by BEEHIVE gauge.

Six buttons.

*You must use Quickerknit to be sure of a successful result.*

**MEASUREMENTS:** To fit 17-19 inch chest. Length,  $8\frac{1}{2}$  ins. Sleeve seam, 5 ins.

*These instructions apply to the above measurements only; adaptations to other sizes are not available.*

**TENSION:** 6 sts. and 8 rows to one square inch on No. 8 needles, measured over stocking stitch. See page 2 for how



to check your Tension, and Abbreviations.

## BACK

Using No. 10 needles, cast on 54 sts.  
Work in K.1, P.1 rib for 1½ ins., inc. 1 st.  
at end of last row (55 sts.).

Change to No. 8 needles and proceed  
in patt. as follows:—

1st row—K.

2nd row—K.1, P. to last st., K.1.

3rd row—\* K.1, K.2 tog., w.fwd., K.1,  
w.fwd., K.2 tog.t.b.l., rep. from \* to last  
st., K.1.

4th and 5th rows—As 2nd and 3rd.

6th row—K.1, P. to last st., K.1.

These 6 rows form the patt.

Continue in patt. until work measures  
4 ins. from beg., finishing so that right  
side of work will be facing when working  
next row.

Keeping patt. correct shape raglan arm-  
holes as follows:—

1st and 2nd rows—Cast off 2, work to end.

3rd row—K.2, K.2 tog.t.b.l., work to  
last 4 sts., K.2 tog., K.2.

4th row—K.2, P. to last 2 sts., K.2.

Rep. 3rd and 4th rows 16 times more  
(17 sts.).

Cast off.

## RIGHT FRONT

Using No. 10 needles, cast on 26 sts.  
continued below

Continue in patt. until work measures  
same as Back up to armhole shaping,  
finishing so that wrong side of work will  
be facing when working next row.

Keeping patt. correct, shape raglan arm-  
hole as follows:—

1st row—Cast off 2, P. to last st., K.1.

2nd row—Work to last 4 sts., K.2 tog.,  
K.2.

3rd row—K.2, P. to last st., K.1.

Rep. 2nd and 3rd rows 11 times more  
(12 sts.).

Shape neck by casting off 3 sts. at beg. of  
next row, then dec. 1 st. at neck edge  
on next and every alt. row, at the same  
time dec. 1 st. at armhole edge as before  
on every alt. row until 3 sts. remain.

Continue without further dec. at neck  
edge but still dec. at armhole edge as  
before until 1 st. remains.

Work 1 row.

Fasten off.

## LEFT FRONT

Work to match Right Front reversing  
all shapings, the first 4 rows of patt.  
being as follows:—

1st row—K.

2nd row—K.1, P. to last st., K.1.

3rd row—\* K.1, K.2 tog., w.fwd., K.1,  
w.fwd., K.2 tog.t.b.l., rep. from \* to last  
2 sts., K.2.

4th row—As 2nd row.

# Quickie in Quickerknit

button-through raglan cardigan with a fast finishing time

Work in K.1, P.1 rib for 1½ ins.

Change to No. 8 needles and proceed in  
patt. as follows:—

1st row—K.

2nd row—K.1, P. to last st., K.1.

3rd row—K.1, \* K.1, K.2 tog., w.fwd.,  
K.1, w.fwd., K.2 tog.t.b.l., rep. from \*  
to last st., K.1.

4th and 5th rows—As 2nd and 3rd.

6th row—K.1, P. to last st., K.1.

These 6 rows form the patt.

## SLEEVES

Using No. 10 needles, cast on 30 sts.

Work in K.1, P.1 rib for 1½ ins.

Next row—Rib 2, (inc. in next st., rib 5)  
4 times, inc. in next st., rib to end (35  
sts.).

Change to No. 8 needles and proceed in  
patt. as follows:—

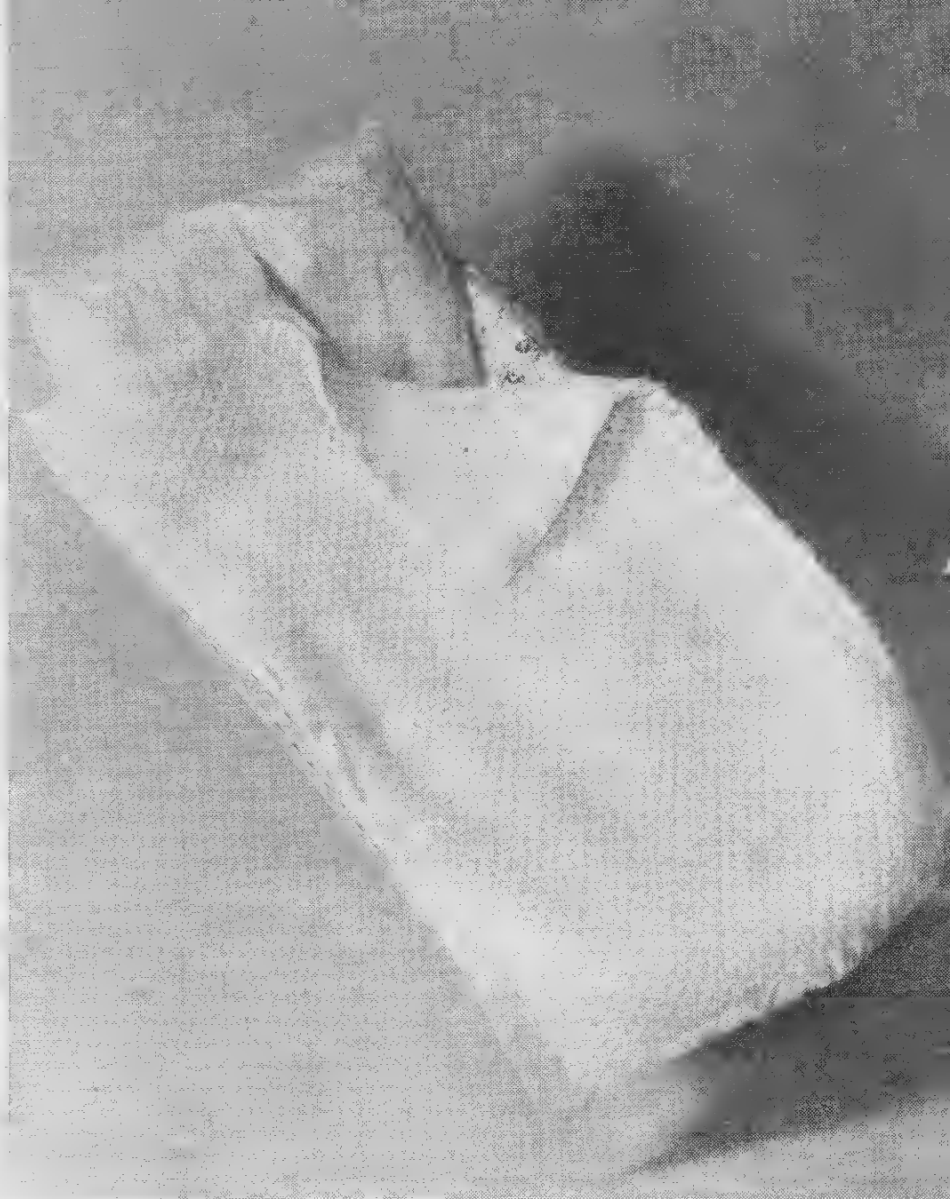
1st row—K.

2nd row—K.1, P. to last st., K.1.

continued on page 50

# Big Ben Blanket

soft  
thick  
warm



**MATERIALS:** 12 hanks PATONS BIG BEN Knitting.

Two No. 3 (14 inch) BEEHIVE needles, measured by BEEHIVE gauge. 3½ yards Blanket Ribbon.

*You must use the P & B brand recommended above to be sure of a successful result.*

**MEASUREMENTS:** Width, 24 ins.  
Length, 32 ins. (approx.).

**TENSION:** 3½ sts. and 4½ rows to one square inch on No. 3 needles, measured over stocking stitch. *See page 2 for how to check your Tension, and Abbreviations.*

Cast on 84 sts.

Work 3 rows in stocking stitch.

**Next row**—P.4, (inc. in next st., P.2) 25 times, inc. in next st., P. to end (110 sts.).

Proceed in trellis stitch and stocking stitch borders as follows:—

**1st row**—K.3, \* Tw.2F., Tw.2B., rep. from \* to last 3 sts., K.3.

**2nd row**—P.6, \* Tw.2P., P.2, rep. from \* to last 4 sts., P.4.

**3rd row**—K.3, \* Tw.2B., Tw.2F., rep. from \* to last 3 sts., K.3.

**4th row**—P.4, \* Tw.2P., P.2, rep. from \* to last 6 sts., Tw.2P., P.4.

These 4 rows form the patt.

Rep. 1st to 4th rows incl. 41 times more.

**Next row**—K.4, (K.2 tog., K.2) 25 times, K.2 tog., K. to end (84 sts.).

Work 3 rows in stocking stitch.

Cast off.

## TO MAKE UP

With wrong side of work facing, block fabric by pinning out round edges.

Press fabric lightly, using a warm iron and damp cloth.

Bind edges placing ribbon over stocking stitch borders, mitring corners.

# In lacy rib

simple raglan  
cardigan  
in Baby Wool

**MATERIALS:** 2 oz. PATONS BEEHIVE Baby Wool, Patonised.  
Two No. 12 and two No. 11 BEEHIVE or QUEEN BEE needles, measured by BEEHIVE gauge. Five buttons.

*You must use the P & B brand recommended above to be sure of a successful result.*

**MEASUREMENTS:** To fit 18 inch chest. Length, 9½ ins. (excluding neckband). Sleeve seam, 5½ ins.

*These instructions apply to the above measurements only; adaptations to other sizes are not available.*

**TENSION:** 8 sts. and 10 rows to one square inch on No. 11 needles, measured over stocking stitch. *See page 2 for how to check your Tension, and Abbreviations.*

## BACK

Using No. 12 needles, cast on 62 sts.

Work 13 rows in K.1, P.1 rib.

Next row—Rib 3, (inc. in next st., rib 5) 9 times, inc. in next st., rib to end (72 sts.).

Change to No. 11 needles and proceed in patt. as follows:—

1st row—K.1, \* K.2 tog., w.fwd., K.1, w.fwd., K.2 tog.t.b.l., rep. from \* to last st., K.1.

2nd row—K.1, P. to last st., K.1.

These 2 rows form the patt.



Continue in patt. until work measures 5 ins. from beg., finishing at end of a P. row.

Keeping patt. correct, shape raglan armholes as follows:—

1st and 2nd rows—Cast off 2, work to end.

3rd row—K.1, K.2 tog.t.b.l., patt. to last 3 sts., K.2 tog., K.1.

4th row—K.1, P. to last st., K.1.

Rep. 3rd and 4th rows 21 times (24 sts.).  
Cast off.

## RIGHT FRONT

Using No. 12 needles, cast on 32 sts.

Work 13 rows in K.1, P.1 rib.

Next row—Rib 3, (inc. in next st., rib 5) 4 times, inc. in next st., rib to end (37 sts.).

Change to No. 11 needles and proceed in patt. as on Back until work measures same as Back to armhole shaping, finishing at end of a P. row.

continued on page 36

Keeping patt. correct, **shape front slope and raglan armhole** as follows:—

**1st row**—K.2 tog., patt. to end.

**2nd row**—Cast off 2, P. to last st., K.1.

**3rd row**—Patt. to last 3 sts., K.2 tog., K.1.

**4th row**—K.1, P. to last st., K.1.

Continue dec. 1 st. at front edge on next and every following 4th row **at the same time** dec. 1 st. at armhole edge as before on next and every alt. row until 4 sts. remain.

Continue without further dec. at front edge but still dec. at armhole edge on every alt. row until 2 sts. remain.

Work 1 row. Cast off.

### LEFT FRONT

Work to match Right Front reversing all shapings, working dec. at armhole "t.b.l."

### SLEEVES

Using No. 12 needles, cast on 38 sts.

Work 13 rows in K.1, P.1 rib.

**Next row**—Rib 3, (inc. in next st., rib 3) 8 times, inc. in next st., rib to end (47 sts.).

**Change to No. 11 needles** and proceed in patt. as on Back, inc. 1 st. in first st. and last st. but one on 3rd and every following 8th row until there are 57 sts. Continue on these sts. until work mea-

sures 5½ ins. from beg., finishing at end of a P. row.

Keeping patt. correct, **shape top** by working 1st to 4th rows of raglan shaping as on Back.

Rep. 3rd and 4th rows 21 times (9 sts.). Cast off.

### FRONT BAND

Using No. 12 needles, cast on 7 sts.

**1st row**—K.2, (P.1, K.1) twice, K.1.

**2nd row**—(K.1, P.1) 3 times, K.1.

**3rd and 4th rows**—As 1st and 2nd.

**5th row**—K.2, P.1, w.r.n., P.2 tog., K.2. Continue in rib working a buttonhole as on last row on every 12th row from previous buttonhole until 5 buttonholes **in all** have been worked.

Continue without further buttonholes until work measures 22 ins. (not stretched) from beg.

Cast off in rib.

### TO MAKE UP

Omitting ribbing, with wrong side of work facing block each piece by pinning out round edges.

Omitting ribbing, **very lightly** press each piece using a warm iron and damp cloth. Join side and sleeve seams and stitch Sleeves into position. Stitch Front Band into position.

Attach buttons. Press seams.

## Family Treasure

a magnificent christening shawl in Beehive Baby Wool

**MATERIALS:** 15 oz. PATONS BEEHIVE Baby Wool, Patonised.

Two No. 10 BEEHIVE or QUEEN BEE needles, measured by BEEHIVE gauge.

*You must use the P & B brand recommended above to be sure of a successful result.*

**MEASUREMENTS:** 56 ins. square (approx.)

**TENSION:** 7½ sts. and 9½ rows to one square inch on No. 10 needles, measured over stocking stitch. *See page 2 for how to check your Tension, and Abbreviations.*

Cast on 393 sts.

K. 32 rows.

Proceed as follows:—

**1st, 4th, 6th, 8th, 10th, 12th, 14th, 16th and 18th rows:**—K.26, P. to last



26 sts., K.26.

2nd row—K.

3rd row—K.26, (K.1, w.fwd., K.8, P.3 tog., K.8, w.fwd.) 17 times, K.27.

5th row—K.26, (K.2, w.fwd., K.7, P.3 tog., K.7, w.fwd., K.1) 17 times, K.27.

7th row—K.26, K.2 tog., (w.fwd., K.1, w.fwd., K.6, P.3 tog., K.6, w.fwd., K.1, w.fwd., sl.1, K.2 tog., p.s.s.o.) 16 times, w.fwd., K.1, w.fwd., K.6, P.3 tog., K.6, w.fwd., K.1, w.fwd., K.2 tog.t.b.l., K.26.

9th row—K.26, (K.4, w.fwd., K.5, P.3 tog., K.5, w.fwd., K.3) 17 times, K.27.

11th row—K.26, (K.1, w.fwd., sl.1, K.2 tog., p.s.s.o., w.fwd., K.1, w.fwd., K.4, P.3 tog., K.4, w.fwd., K.1, w.fwd., sl.1, K.2 tog., p.s.s.o., w.fwd.) 17 times, K.27.

13th row—K.26, (K.6, w.fwd., K.3, P.3 tog., K.3, w.fwd., K.5) 17 times, K.27.

15th row—K.26, K.2 tog., (w.fwd., K.1, w.fwd., sl.1, K.2 tog., p.s.s.o., w.fwd., K.1, w.fwd., K.2, P.3 tog., K.2, w.fwd., K.1, w.fwd., sl.1, K.2 tog., p.s.s.o.,

w.fwd., K.1, w.fwd., sl.1, K.2 tog., p.s.s.o.) 16 times, w.fwd., K.1, w.fwd., sl.1, K.2 tog., p.s.s.o., w.fwd., K.1, w.fwd., K.2, P.3 tog., K.2, w.fwd., K.1, w.fwd., sl.1, K.2 tog., p.s.s.o., w.fwd., K.1, w.fwd., K.2 tog.t.b.l., K.26.

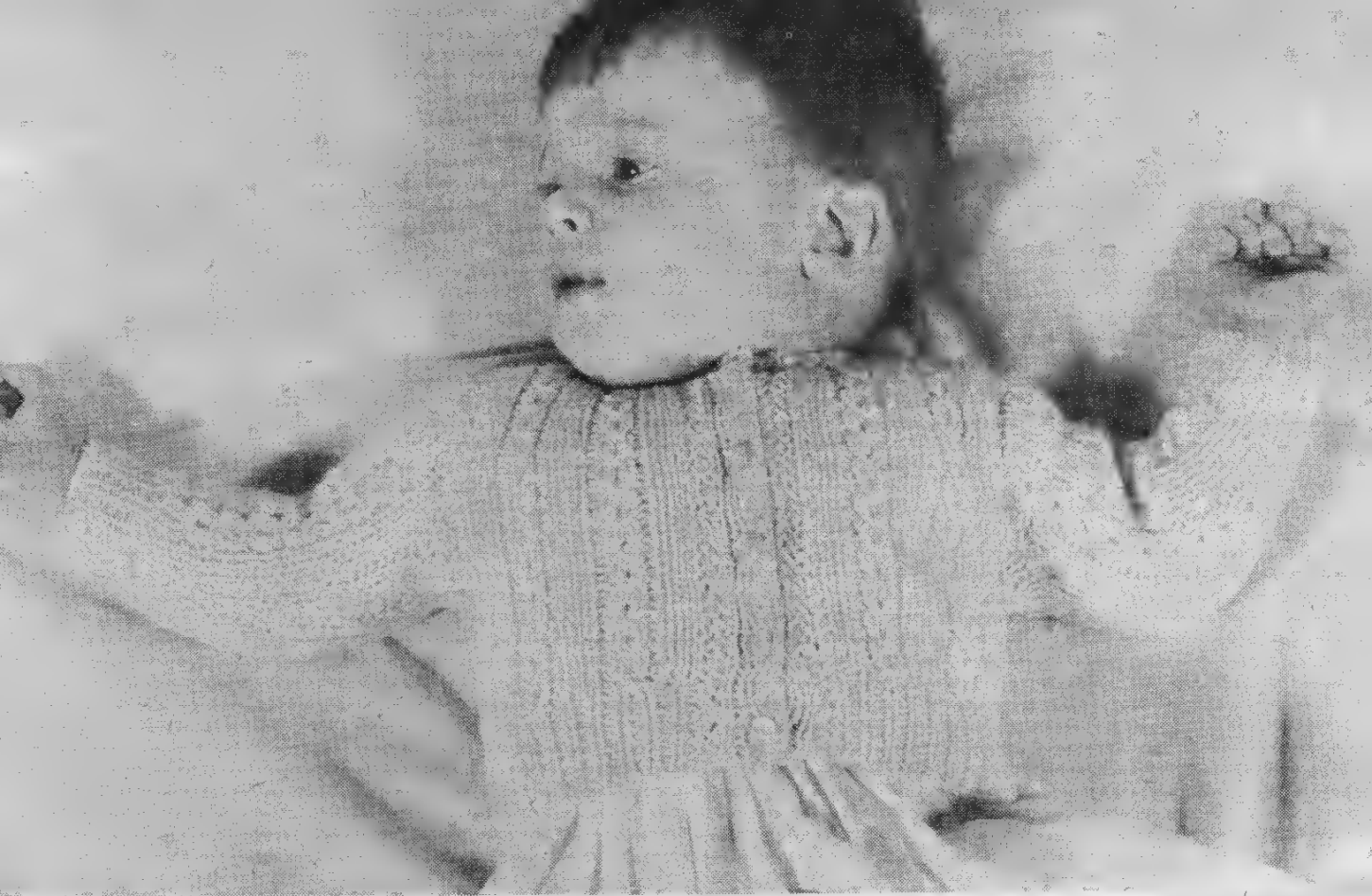
17th row—K.26, (K.8, w.fwd., K.1, P.3 tog., K.1, w.fwd., K.7) 17 times, K.27.

19th row—K.26, (K.1, w.fwd., sl.1, K.2 tog., p.s.s.o., w.fwd., K.1, w.fwd., sl.1, K.2 tog., p.s.s.o., w.fwd., K.1, w.r.n., P.3 tog., w.o.n., K.1, w.fwd., sl.1, K.2 tog., p.s.s.o., w.fwd., K.1, w.fwd., sl.1, K.2 tog., p.s.s.o., w.fwd.) 17 times, K.27.

20th row—K.26, P. to last 26 sts., K.26. Rep. 1st to 20th row 22 times more. K. 31 rows. Cast off.

#### TO DRESS SHAWL

Pin out to correct measurement, cover with wet cloth and lightly steam press. Take cloth off Shawl and leave Shawl pinned out until completely dry.



## *Never too many*

of these button-through cardigans in Quickerknit

**MATERIALS:** 3 oz. PATONS QUICKERKNIT Baby Wool, Patonised.

Two No. 10 and two No. 8 BEEHIVE or QUEEN BEE needles, measured by BEEHIVE gauge. Six buttons.

*You must use Quickerknit to be sure of a successful result.*

**MEASUREMENTS:** To fit 18 inch chest. Length, 8½ ins. Sleeve seam, 5 ins.

*These instructions apply to the above measurements only; adaptations to other sizes are not available.*

**TENSION:** 6 sts. and 8 rows to one square inch on No. 8 needles, measured over stocking stitch. *See page 2 for how*

*to check your Tension, and Abbreviations.*

### BACK

Using No. 10 needles, cast on 52 sts. Work in K.1, P.1 rib for 1½ ins.

Next row—Rib 3, (inc. in next st., rib 10) 4 times, inc. in next st., rib to end (57 sts.).

Change to No. 8 needles and proceed in patt. as follows:—

1st row—\* K.2, P.1, w.b., sl.1, K.2, p.s.s.o. the K.2, P.1, K.1, rep. from \* to last st., K.1.

2nd row—K.1, \* P.1, K.1, P.1, w.r.n., P.1, K.1, P.2, rep. from \* to last 7 sts., P.1, K.1, P.1, w.r.n., (P.1, K.1) twice.

3rd row—\* K.2, P.1, K.3, P.1, K.1, rep. from \* to last st., K.1.

**4th row**—K.1, \* P.1, K.1, P.3, K.1, P.2, rep. from \* to last 8 sts., P.1, K.1, P.3, K.1, P.1, K.1.

These 4 rows form the patt.

Continue in patt. until work measures  $4\frac{3}{4}$  ins. from beg., finishing so that right side of work will be facing when working next row.

Keeping patt. correct throughout **shape armholes** by casting off 3 sts. at beg. of next 2 rows. Dec. 1 st. at both ends of next and every alt. row until 45 sts. remain.

Continue on these sts. until work measures  $3\frac{3}{4}$  ins. from beg. of armhole shaping.

**Shape shoulders** by casting off 7 sts. at beg. of next 2 rows, 8 sts. at beg. of following 2 rows.

Cast off.

### RIGHT FRONT

Using No. 10 needles, cast on 24 sts.

Work in K.1, P.1 rib for  $1\frac{1}{2}$  ins.

**Next row**—Rib 2, (inc. in next st., rib 8) twice, inc. in next st., rib to end (27 sts.).

**Change to No. 8 needles** and proceed in patt. as follows:—

**1st row**—K.1, \* K.3, P.1, sl.1, K.2, p.s.s.o. the K.2, P.1, rep. from \* to last 2 sts., K.2.

**2nd row**—K.1, \* P.1, K.1, P.1, w.r.n., P.1, K.1, P.2, rep. from \* to last 2 sts., P.1, K.1.

**3rd row**—K.1, \* (K.3, P.1) twice, rep. from \* to last 2 sts., K.2.

**4th row**—K.1, \* P.1, K.1, P.3, K.1, P.2, rep. from \* to last 2 sts., P.1, K.1.

These 4 rows form the patt.

Continue in patt. until work measures same as Back to armhole shaping, finishing so that **wrong** side of work will be facing when working next row.

Keeping patt. correct throughout **shape armhole** by casting off 3 sts. at beg. of next row. Dec. 1 st. at armhole edge on next and every alt. row until 21 sts. remain.

Continue on these sts. until work measures  $2\frac{1}{2}$  ins. from beg. of armhole shaping, finishing at front edge.

**Shape neck** by casting off 3 sts. at beg. of next row. Dec. 1 st. at neck edge on next and every alt. row until 15 sts. remain.

Continue on these sts. until work measures same as Back to shoulder shaping, finishing at armhole edge.

**Shape shoulder** by casting off 7 sts. at beg. of next row.

Work 1 row.

Cast off.

### LEFT FRONT

Work to match Right Front reversing all shapings, the first 2 rows of patt. being as follows:—

**1st row**—K.2, \* P.1, sl.1, K.2, p.s.s.o. the K.2, P.1, K.3, rep. from \* to last st., K.1.

**2nd row**—K.1, \* P.3, K.1, P.1, w.r.n., P.1, K.1, rep. from \* to last 2 sts., P.1, K.1.

### SLEEVES

Using No. 10 needles, cast on 28 sts.

Work in K.1, P.1 rib for  $1\frac{1}{2}$  ins.

**Next row**—Rib 1, (inc. in next st., rib 3) 6 times, inc. in next st., rib to end (35 sts.).

**Change to No. 8 needles** and proceed in patt. as follows:—

**1st row**—\* K.3, P.1, sl.1, K.2, p.s.s.o. the K.2, P.1, rep. from \* to last 3 sts., K.3.

**2nd row**—K.1, \* P.2, K.1, P.1, w.r.n., P.1, K.1, P.1, rep. from \* to last 2 sts., P.1, K.1.

**3rd row**—\* K.3, P.1, rep. from \* to last 3 sts., K.3.

**4th row**—K.1, \* P.2, K.1, P.3, K.1, P.1, rep. from \* to last 2 sts., P.1, K.1.

These 4 rows form the patt.

Working extra sts. into patt., inc. 1 st. in first st. and last st. but one on next and every following 5th row until there are 45 sts.

Continue in patt. on these sts. until work measures 5 ins. from beg.

**Shape top** by casting off 3 sts. at beg. of next 2 rows. Dec. 1 st. at both ends of next and every alt. row until 27 sts. remain, every row until 17 sts. remain.

Cast off.

continued on page 51



*From  
our  
Boutique...!*

Two pairs of toe ticklers  
in Quickerknit

**Bottom pair**

**MATERIALS:** 1 oz. PATONS QUICKERKNIT Baby Wool, Patonised.

Two No. 10 BEEHIVE or QUEEN BEE needles, measured by BEEHIVE gauge. Length of ribbon.

*You must use Quickerknit to be sure of a successful result.*

**TENSION:** 7 sts. and 9 rows to one square inch on No. 10 needles, measured over stocking stitch. *See page 2 for how to check your Tension, and Abbreviations.*

Using the two needle method, cast on 31 sts.

Work hem as follows:—

1st row—K.

2nd row—P.

3rd and 4th rows—K.

5th to 8th row—Rep. 1st and 2nd rows twice.

9th row—Make hem by knitting tog. one st. from needle and one loop from cast-on edge all across row.

Proceed in patt. as follows:—

1st row (wrong side of work)—K.2, \* w.fwd., K.2 tog., K.1, rep. from \* to last 2 sts., w.fwd., K.2 tog.

2nd row—K.1, \* w.fwd., K.2 tog., K.1, rep. from \* to end.

Rep. 1st and 2nd rows 6 times more.

Next row—K.1, P. to last st., K.1.

Knitting st. at both ends of every row, work 10 rows in stocking stitch.

Next row—K.2 tog., \* w.fwd., K.2 tog., rep. from \* to last st., K.1 (30 sts.).

Next row—K.1, P. to last st., K.1.

Divide for foot as follows:—

1st row—K.21, turn.

2nd row—K.1, P.10, K.1, turn.

Knitting 1 st. at both ends of every row, work 16 rows in stocking stitch on these

12 sts. for instep.

Break off wool.



With right side of work facing, commencing where sts. were left and using same needle, **knit up** 11 sts. along side of instep, K. across 12 sts. on needle, **knit up** 11 sts. along other side of instep, K. remaining 9 sts. (52 sts.).

K. 11 rows.

**Shape foot as follows:—**

**1st row**—(K.1, K.2 tog., K.20, K.2 tog., K.1) twice.

**2nd row**—K.

**3rd row**—(K.1, K.2 tog., K.18, K.2 tog., K.1) twice.

**4th row**—K.

**5th row**—(K.1, K.2 tog., K.16, K.2 tog., K.1) twice.

Cast off.

Work another Bootee in same manner.

### TO MAKE UP

Press **very lightly** on wrong side using a warm iron and damp cloth.

Join seam. Press seam.

Thread ribbon through holes at ankle.

### Top pair

**MATERIALS:** 1 oz. PATONS QUICKERKNIT Baby Wool, Patonised.

Two No. 10 BEEHIVE or QUEEN BEE needles, measured by BEEHIVE gauge. Length of ribbon.

*You must use Quickerknit to be sure of a successful result.*

**TENSION:** 7 sts. and 9 rows to one square inch on No. 10 needles, measured over stocking stitch. *See page 2 for how to check your Tension, and Abbreviations.*

Cast on 33 sts.

Work 5 rows in moss stitch (every row \* K.1, P.1, rep. from \* to last st., K.1), inc. 1 st. at beg. of last row (34 sts.).

**Next row**—K.1, P. to last st., K.1.

Work lace patt. border as follows:—

**1st row**—K.1, \* w.fwd., K.2 tog.t.b.l., K.6, rep. from \* to last st., K.1.

**2nd and alt. rows**—K.1, P. to last st., K.1.

**3rd row**—K.1, \* K.1, w.fwd., K.2 tog.t.b.l., K.3, K.2 tog., w.fwd., rep. from \* to last st., K.1.

**5th row**—K.1, \* K.2, w.fwd., K.2 tog.t.b.l., K.1, K.2 tog., w.fwd., K.1, rep. from \* to last st., K.1.

**7th, 9th, and 11th rows**—K.1 \* K.3, w.fwd., sl.1, K.2 tog., p.s.s.o., w.fwd., K.2, rep. from \* to last st., K.1.

**12th row**—K.1, P. to last st., K.1.

Knitting 1 st. at both ends of every row, work 10 rows in stocking stitch.

**Next row**—K.2 tog., \* w.fwd., K.2 tog., rep. from \* to end (33 sts.).

**Next row**—K.1, P. to last st., K.1.

**Divide for foot as follows:—**

**1st row**—K.23, turn.

**2nd row**—K.1, P.11, K.1.

Knitting 1 st. at both ends of every row, work 16 rows in stocking stitch on these 13 sts. for instep.

Break off wool.

With right side of work facing, commencing where sts. were left, and using same needle, **knit up** 11 sts. along side of instep, K. across 13 sts. on needle, **knit up** 11 sts. along other side of instep, K. remaining 10 sts. (55 sts.).

Work 11 rows in moss stitch.

**Shape foot as follows:—**

**1st row**—K.1, K.2 tog., (P.1, K.1) 11 times, K.2 tog., P.1, K.2 tog., (K.1, P.1) 11 times, K.2 tog., K.1.

**2nd row**—K.2, (P.1, K.1) 10 times, (P.1, K.2) twice, P.1, (K.1, P.1) 10 times, K.2.

**3rd row**—K.1, P.2 tog., (K.1, P.1) 10 times, K.2 tog., P.1, K.2 tog., (P.1, K.1) 10 times, P.2 tog., K.1.

**4th row**—\* K.1, P.1, rep. from \* to last st., K.1.

**5th row**—K.1, K.2 tog., (P.1, K.1) 9 times, K.2 tog., P.1, K.2 tog., (K.1, P.1) 9 times, K.2 tog., K.1.

Cast off in moss stitch.

Work another Bootee in same manner.

### TO MAKE UP

Press **very lightly** on wrong side using a warm iron and damp cloth.

Join seam. Press seam.

Thread ribbon through holes at ankle.



# Extreme Cases

## Bonnet, mitts, bootees and slippers in Beehive Baby Wool

### Bonnet

**MATERIALS:** 1 oz. PATONS BEEHIVE Baby Wool, Patonised. Oddments for embroidery.

Two No. 11 BEEHIVE or QUEEN BEE needles, measured by BEEHIVE gauge. Length of ribbon.

*You must use the P & B brand recommended above to be sure of a successful result.*

**TENSION:** 8 sts. and 10 rows to one square inch on No. 11 needles, measured over stocking stitch. *See page 2 for how to check your Tension, and Abbreviations.*

Using the two needle method, cast on 96 sts.

Work 12 rows in stocking stitch.

**Next row**—Make hem by knitting tog. one st. from needle and one loop from cast-on edge all across row.

**Next row**—K. (thus forming ridge).

**Next row**—K.

**Next row**—K.1, P. to last st., K.1.

Work last 2 rows twice more.

**Next row**—K.1, P. to last st., K.1 (thus forming ridge).

Commencing with a P. row, proceed in stocking stitch as before until work measures  $3\frac{1}{2}$  ins. from lower edge, Cast off 30 sts. at beg. of next 2 rows (36 sts.).

Continue in stocking stitch on these sts. until work measures  $3\frac{3}{4}$  ins. from where sts. were cast off, finishing at end of a P. row.

Cast off, knitting 2 tog. all across row.

### TO MAKE UP

Using a warm iron and damp cloth, press lightly on wrong side.

Using oddments work embroidery as shown in diagram between ridges round front of Bonnet.

Join side seams.

**Work edging as follows:—**

With right side of work facing, knit up 62 sts. round lower edge of Bonnet.

K. 4 rows.

Cast off.

Attach ribbon to each side of Bonnet. Press seams.



### Mitts

**MATERIALS:** 1 oz. PATONS BEEHIVE Baby Wool, Patonised. Oddments for embroidery.

Two No. 11 BEEHIVE or QUEEN BEE needles, measured by BEEHIVE gauge. Length of ribbon.

*You must use the P & B brand recommended above to be sure of a successful result.*

**TENSION:** 8 sts. and 10 rows to one square inch on No. 11 needles, measured over stocking stitch. *See page 2 for how to check your Tension, and Abbreviations.*

Using the two needle method, cast on 39 sts.

Work 12 rows in stocking stitch.

**Next row**—**Make hem** by knitting tog. one st. from needle and one loop from cast-on edge all across row.

**Next row**—Inc. in first st. knitwise, K. to last 2 sts., inc. in next st., K.1 (41 sts.), thus forming ridge.

**Next row**—K.

**Next row**—K.1, P. to last st., K.1.

Work last 2 rows twice more.

**Next row**—K.1, P. to last st., K.1 (thus forming ridge).

Commencing with a P. row proceed in stocking stitch as before until work measures  $1\frac{3}{4}$  ins. from lower edge, finishing at end of a P. row.

**Next row**—\* K.2 tog., w.fwd., K.2, rep. from \* to last 5 sts., K.2 tog., w.fwd., K.2 tog., K.1 (40 sts.).

**Next row**—K.1, P. to last st., K.1.

Continue in stocking stitch until work measures 4 ins. from lower edge, finishing at end of a P. row.

**Shape top as follows:—**

**1st row**—(K.1, K.2 tog.t.b.l., K.14, K.2 tog., K.1) twice.

**2nd and every alt. row**—K.1, P. to last st., K.1.

**3rd row**—(K.1, K.2 tog.t.b.l., K.12, K.2 tog., K.1) twice.

**5th row**—(K.1, K.2 tog.t.b.l., K.10, K.2 tog., K.1) twice.

**7th row**—(K.1, K.2 tog.t.b.l., K.8, K.2 tog., K.1) twice (24 sts.).

**8th row**—K.1, P. to last st., K.1.

Cast off.

### TO MAKE UP

Using a warm iron and damp cloth, press lightly on wrong side. Work embroidery to match Bonnet. Join seam.

Press seam.

Thread ribbon through holes at wrist.

## Bootees

**MATERIALS:** 1 oz. PATONS BEEHIVE Baby Wool, Patonised. Oddments for embroidery.

Two No. 11 BEEHIVE or QUEEN BEE needles, measured by BEEHIVE gauge. Length of ribbon.

*You must use the P & B brand recommended above to be sure of a successful result.*

**TENSION:** 8 sts. and 10 rows to one square inch on No. 11 needles, measured over stocking stitch. *See page 2 for how to check your Tension, and Abbreviations.*

Using the two needle method, cast on 35 sts.

Work 12 rows in stocking stitch.

**Next row**—**Make hem** by knitting tog. one st. from needle and one loop from cast-on edge all across row.

**Next row**—Inc. in first st. knitwise, K. to last 2 sts., inc. in next st., K.1 (37 sts.), thus forming ridge.

**Next row**—K.

**Next row**—K.1, P. to last st., K.1.

Work last 2 rows twice more.

**Next row**—K.1, P. to last st., K.1 (thus forming ridge).

Commencing with a P. row keeping K. st. edges correct, proceed in stocking stitch until work measures  $2\frac{1}{4}$  ins. from lower edge, finishing at end of a P. row.

**Next row**—K.2 tog., \* w.fwd., K.2 tog., K.1, w.fwd., K.2, rep. from \* to last 5 sts., w.fwd., K.2 tog., K.1, w.fwd., K.2 tog. (42 sts.).

**Next row**—K.1, P. to last st., K.1.

**Divide for foot as follows:—**

**1st row**—K.28, turn.

**2nd row**—K.1, P.12, K.1, turn.

Work 16 rows more in stocking stitch on these 14 sts. for instep.

Break off wool.

With right side of work facing commencing where sts. were left and using same needle, **knit up** 14 sts. along side of instep, K. across 14 sts. on needle, **knit up** 14 sts. from other side of instep, K. remaining 14 sts. (70 sts.).

K. 13 rows.

Shape foot as follows:—

1st row—(K.1, K.2 tog., K.29, K.2 tog., K.1) twice.

2nd row—K.31, (K.2 tog.) twice, K.31.

3rd row—(K.1, K.2 tog., K.26, K.2 tog., K.1) twice.

4th row—K.28, (K.2 tog.) twice, K.28.

5th row—K.27, (K.2 tog.) twice, K.27.

Cast off.

#### TO MAKE UP

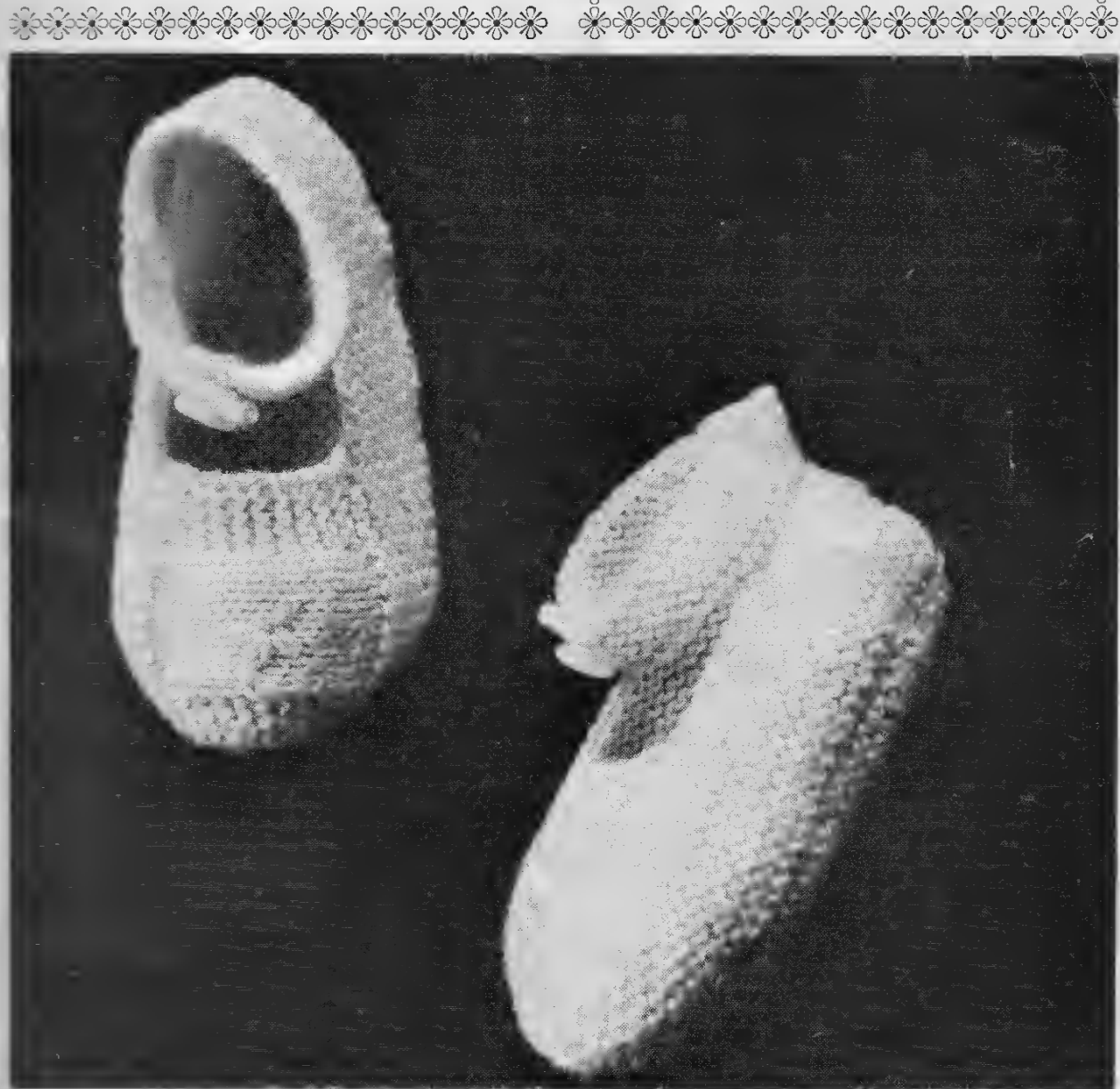
Using a warm iron and damp cloth, press lightly on wrong side.

Work embroidery to match Bonnet.

Join seam. Press seam.

Thread ribbon through holes at ankle.

## *Slippers*



**MATERIALS:** 1 oz. PATONS BEEHIVE Baby Wool, Patonised. Oddment for embroidery.

Two No. 13 BEEHIVE or QUEEN BEE needles, measured by BEEHIVE gauge. Two small buttons.

*You must use the P & B brand recommended above to be sure of a successful result.*

**TENSION:** 9 sts. and 11 rows to one square inch on No. 13 needles, measured over stocking stitch. *See page 2 for how to check your Tension, and Abbreviations.*

Cast on 22 sts.

Work in garter stitch (every row K.), inc. 1 st. at both ends of 1st and every alt. row until there are 38 sts. Now **dec.** 1 st. at both ends of every alt. row until 22 sts. remain (this piece is for sole), casting on 8 sts. at end of last row for heel (30 sts.). Continue in garter stitch, keeping heel edge straight and **inc.** 1 st. at other edge on every alt. row (this is for toe) until there are 38 sts.

**Next row**—Cast off 20 sts. at heel, K. to end.

Proceed on remaining 18 sts. as follows:

**1st row**—K.

**2nd row**—K.5, P.8, K.5.

**3rd to 18th row**—Rep. 1st and 2nd rows 8 times.

**19th row**—K., casting on 20 sts. at end of row (38 sts.).

Continue in garter stitch keeping heel edge straight and **dec.** 1 st. at toe edge on every alt. row until 30 sts. remain.

Cast off.

### TO MAKE UP

Using a warm iron and damp cloth, press lightly on wrong side. Work embroidery to match Bonnet. Join two straight edges of heel and join together edges round sole, easing in fullness at toe.

### STRAP

With right side of work facing, **knit up** 18 sts. at heel (9 sts. at each side of seam), cast on 14 sts.

**Next row**—K. to end, cast on 14 sts. (46 sts.).

**1st and 2nd rows**—K.

**3rd row** (on which a buttonhole is worked)—K.2, cast off 2, K. to end.

**4th row**—K. to last 2 sts., cast on 2, K.2.

**5th to 7th row**—K.

Cast off.

Work another Slipper in same manner working buttonhole at opposite end of needle.

Attach buttons.



*Four*

*Ply*

*Jersey*

in two sizes

instructions

start on page 48





**MATERIALS:** 3 [3] oz. PATONS BEEHIVE Fingering 4-ply, Patonised, or PATONS NYLOX Knitting 4-ply, Patonised.

Two No. 12 and two No. 10 BEEHIVE or QUEEN BEE needles, measured by BEEHIVE gauge. Three buttons.

*You must use the P & B brands recommended above to be sure of a successful result.*

**MEASUREMENTS:** To fit 18 [20] inch chest. Length,  $9\frac{1}{2}$  [ $10\frac{1}{2}$ ] ins. Sleeve seam,  $5\frac{1}{2}$  [ $6\frac{1}{2}$ ] ins.

*These instructions apply to the above measurements only; adaptations to other sizes are not available.*

**TENSION:** 7 sts. and 9 rows to one square inch on No. 10 needles, measured over stocking stitch. *See page 2 for how to check your Tension, and Abbreviations.*

### FRONT

Using No. 12 needles, cast on 64 [72] sts.

Work in K.1, P.1 rib for  $1\frac{1}{4}$  [ $1\frac{1}{2}$ ] ins., inc. 1 st. at beg. of last row (65 [73] sts.).

**Change to No. 10 needles** and proceed in **patt.** as follows:—

**1st row**—K.

**2nd row**—K.1, P. to last st., K.1.

**3rd row**—\* K.1, w.ft., sl.1 purlwise w.b., rep. from \* to last st., K.1.

**4th row**—K.1, P. to last st., K.1.

These 4 rows form the **patt.**

Continue in **patt.** until work measures  $5\frac{3}{4}$  [ $6\frac{1}{2}$ ] ins. from beg., finishing at end of a P. row.

Keeping **patt.** correct throughout, **shape armholes** by casting off 4 [5] sts. at beg. of next 2 rows. Dec. 1 st. at both ends of next and every alt. row until 51 [55] sts. remain.\*\*

Continue on these sts. until work measures  $2\frac{1}{2}$  [ $2\frac{3}{4}$ ] ins. from beg. of armhole shaping, finishing so that **wrong** side of

work will be facing when working next row.

**Shape neck** as follows:—

**Next row**—K.1, P.19 [20], cast off 11 [13], P. to last st., K.1.

Proceed on **each** group of sts., dec. 1 st. at neck edge on every row until 16 [17] sts. remain.

Continue on these sts. until work measures  $3\frac{3}{4}$  [4] ins. from beg. of armhole shaping, finishing at armhole edge.

**Shape shoulder** by casting off 8 [8] sts. at beg. of next row.

Work 1 row.

Cast off.

### BACK

Work as Front to \*\*.

Continue on these sts. until work measures same as Front to shoulder shaping.

**Shape shoulders** by casting off 8 [8] sts. at beg. of next 2 rows, 8 [9] sts. at beg. of following 2 rows.

Cast off.

### SLEEVES

Using No. 12 needles, cast on 36 [38] sts.

Work in K.1, P.1 rib for  $1\frac{1}{4}$  [ $1\frac{1}{2}$ ] ins.

**Next row**—Rib 2 [3], (inc. in next st., rib 7) 4 times, inc. in next st., rib to end (41 [43] sts.).

**Change to No. 10 needles** and proceed in **patt.** as on Front, working extra sts. into **patt.** inc. 1 st. on first st. and last st. but one on 5th and every following 8th [10th] row until there are 49 [51] sts.

Continue in **patt.** on these sts. until work measures  $5\frac{1}{2}$  [ $6\frac{1}{2}$ ] ins. from beg.

**Shape top** by casting off 3 sts. at beg. of next 2 rows. Dec. 1 st. at both ends of next and every alt. row until 23 [23] sts. remain, every row until 17 [17] sts. remain.

Cast off.



## NECKBAND

Using a back-stitch seam join right shoulder seam **only**.

Using No. 12 needles with right side of work facing, **knit up** 58 [62] sts. round neck.

Work 5 rows in K.1, P.1 rib.  
Cast off loosely in rib.

## TO MAKE UP

Omitting ribbing, with wrong side of

work facing block each piece by pinning out round edges.

Omitting ribbing, press each piece using a warm iron and damp cloth.

Using a back-stitch seam join left shoulder seam for  $\frac{1}{2}$  inch.

Join side and sleeve seams and stitch Sleeves into position.

Attach buttons to left shoulder and make button-loops to correspond.

Press seams.



# WASHING BABIES' HANDKNITS

Baby clothes need more washing than any others—but this suits woollies because they should in any case be washed frequently and lightly.

Both Patons Beehive Baby Wool and Quickerknit Baby Wool are Patonised: this shrink-resist finish, developed by, and exclusive to, P & B, ensures that garments will not shrink or stretch and will keep their new-look freshness through repeated washings, provided these recommended methods are used: 1. Wash handknits by hand, not machine. Use soap, soap flakes and soap powders or, especially in hard water, detergents—don't use bleaches, they scorch wool brown.

Follow exactly maker's instructions about quantities. Don't use too little soap, especially in hard water; if you rub to remove dirt, fabric will felt and this cannot be rectified.

Dissolve washing product **completely** in hot water; add cold until suds are **lukewarm** for soap products, **cool** for detergents. Prepare enough washing water to cover garment completely. When every speck of washing powder or soap has **completely dissolved**, put garment in and work suds through gently and **quickly** for about two minutes. **Don't** rub, let garment soak, or lift it above surface of water.

**All-white woollies:** before washing for **first time**, especially thick wools, steep for 30 minutes in bowl of cold water

(exact amount does not matter) to which 3 or 4 tablespoons of household ammonia have been added—but don't use ammonia for white garments with **coloured** stripes. Ammonia neutralises any acid which may have been left by the dyeing process.

2. Rinse thoroughly in cool water, changing until it comes clear. Whenever you lift garment from water, support it with both hands: unsupported wet garments soon distort—especially double knittings.

3. Dry handknits by quickly getting rid of as much water as you can. Don't pull or twist garment, but squeeze between towels, or fold in towel and pass through light rubber wringer, after removing any buttons which may break and cause damage.

Ease garment into shape and, if possible, lay flat in airing cupboard—don't try to dry it quickly in front of a fire.

If you **must** hang it up—lengthwise across a line or rack, please; fold sleeves back so that they do not hang down and stretch. If you dry garment outside, **keep it in the shade**—wet wool scorches and turns brown in the sun.

When the garment is dry, reblock to correct size and shape, and lightly press under damp cloth.

**Drying Machines.** Spin dryers are very suitable for woollies, but tumbler dryers should never be used as their tumbling action causes felting.

## Raglan Frilly—continued from page 17

### TO MAKE UP

With wrong side of work facing block each piece by pinning out round edges. Press each piece lightly using a warm iron and damp cloth.

Join side and sleeve seams and stitch Sleeves into position.

### NECKBAND

With right side of work facing, omitting picot at front edges, knit up 68 sts. round neck.

**1st row**—K.1, P. to last st., K.1.

**2nd row** (on which holes for ribbon are worked)—K.1, \* K.1, w.fwd., K.2 tog.,

rep. from \* to last st., K.1.

**3rd row**—As 1st row.

Work 3rd to 7th rows incl. of picot hem as on Back.

Cast off.

Fold over picot edges at row of holes and neatly stitch into position on wrong side of work.

Press all seams.

Cut one length of ribbon and thread through holes at neck. Thread remaining ribbon through row of holes between diamond patt. on Back and Fronts and along front edges.



## 'Cover my defenceless head . . . '—continued from page 19

**13th row**—W.r.n., P.8 tog., K.1, (w.fwd., K.2 tog.t.b.l.) twice, K.4, w.fwd., K.2 tog.t.b.l., K.1.

Rows 2 to 13 form the patt.

Continue in patt. until Lace Border measures approximately 133 ins., finishing at end of a 13th row. Cast off.

### TO FINISH

Dress centre as Christening Shawl page 37. Stitch on Lace Border easing at corners, joining at corner. Pin out scalloped edge of lace and very lightly press on wrong side using a warm iron and damp cloth.



## Quickie in Quickerknit—continued from page 33

**3rd row**—\* K.2 tog., w.fwd., K.1, w.fwd., K.2 tog.t.b.l., K.1, rep. from \* to last 5 sts., K.2 tog., w.fwd., K.1, w.fwd., K.2 tog.t.b.l.

**4th and 5th rows**—As 2nd and 3rd.

**6th row**—K.1, P. to last st., K.1.

These 6 rows form the patt.

Continue in patt., inc. 1 st. in first st.

and last st. but one on next and every following 6th row until there are 43 sts., working extra sts. into patt.

Continue on these sts. until work measures 5 ins. from beg., finishing at end of a P. row.

Keeping patt. correct shape raglan top as follows:—

1st and 2nd rows—Cast off 2, work to end.  
 3rd row—K.2, K.2 tog.t.b.l., work to last 4 sts., K.2 tog., K.2.  
 4th row—K.2, P. to last 2 sts., K.2.  
 Rep. 3rd and 4th rows 15 times more.  
 Next row—K.2, sl.1, K.2 tog., p.s.s.o., K.2 (5 sts.).  
 Next row—K.2, P.1, K.2.  
 Cast off.

#### RIGHT FRONT BAND

Using No. 10 needles, cast on 7 sts.  
 1st row—K.2, (P.1, K.1) twice, K.1.  
 2nd row—(K.1, P.1) 3 times, K.1.  
 3rd row—K.2, P.2 tog., w.r.n., P.1, K.2.  
 Continue in rib working a buttonhole as on last row, on every following 12th row until 5 buttonholes in all have been worked.  
 Work 10 rows.  
 Slip sts. on to a safety pin.

#### LEFT FRONT BAND

Omitting buttonholes, work to match Right Front Band, working 1 row less.



Never too many—continued from page 39

#### RIGHT FRONT BAND

Using No. 10 needles, cast on 7 sts.  
 1st row—K.2, (P.1, K.1) twice, K.1.  
 2nd row—(K.1, P.1) 3 times, K.1.  
 3rd row—K.2, P.2 tog., w.r.n., P.1, K.2.  
 Continue in rib working a buttonhole as on last row on every 12th row from previous buttonhole until 5 buttonholes in all have been worked. Work 10 rows.  
 Slip these sts. on to a safety pin and leave.

#### LEFT FRONT BAND

Omitting buttonholes, work to match Right Front Band, working 1 row less.

#### NECKBAND

Using a back-stitch seam join shoulders of Back and Fronts.

#### TO MAKE UP

Omitting ribbing, with wrong side of work facing block each piece by pinning out round edges.  
 Omitting ribbing, press each piece very lightly using a warm iron and damp cloth.  
 Join side and sleeve seams and stitch Sleeves into position.

#### NECKBAND

Slip sts. from Right Front Band on to a No. 10 needle with right side of work facing using same needle, knit up 51 sts. round neck, rib across sts. from Left Front Band (65 sts.).  
 Work 5 rows in rib working a buttonhole as before on 2nd row.  
 Cast off in rib.

#### TO COMPLETE MAKE UP

Stitch Front Bands into position.  
 Attach buttons. Press seams.

Slip sts. from Right Front Band on to a No. 10 needle, using same needle, with right side of work facing, knit up 53 sts. round neck, rib across sts. of Left Front Band (67 sts.).  
 Work 5 rows in K.1, P.1 rib working a buttonhole as before on 2nd row.  
 Cast off in rib.

#### TO MAKE UP

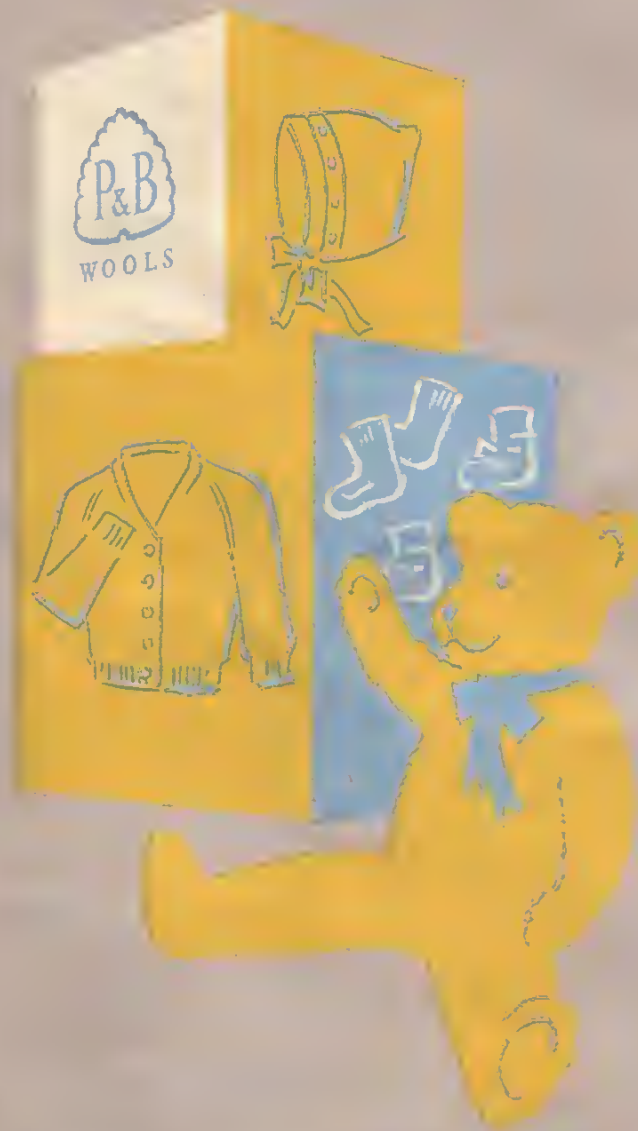
Omitting ribbing, with wrong side of work facing block each piece by pinning out round edges.  
 Omitting ribbing, press each piece using a warm iron and damp cloth.  
 Join side and sleeve seams and stitch Sleeves into position. Stitch Front Bands into position. Attach buttons.  
 Press seams.

Please address knitting enquiries concerning this book to  
 Dept. SHB, Patons & Baldwins Limited, Great West Road, Brentford, Middlesex  
 Prices apply only in Great Britain and Northern Ireland

PUBLISHED BY PATONS & BALDWIN'S LIMITED

Made and Printed in Great Britain by Percy Lund, Humphries & Co., Ltd., Bradford and London. 17593

INCHES  
1  
2  
3  
4  
5  
6  
7



**Published with all rights reserved by Patons & Baldwins Limited**