

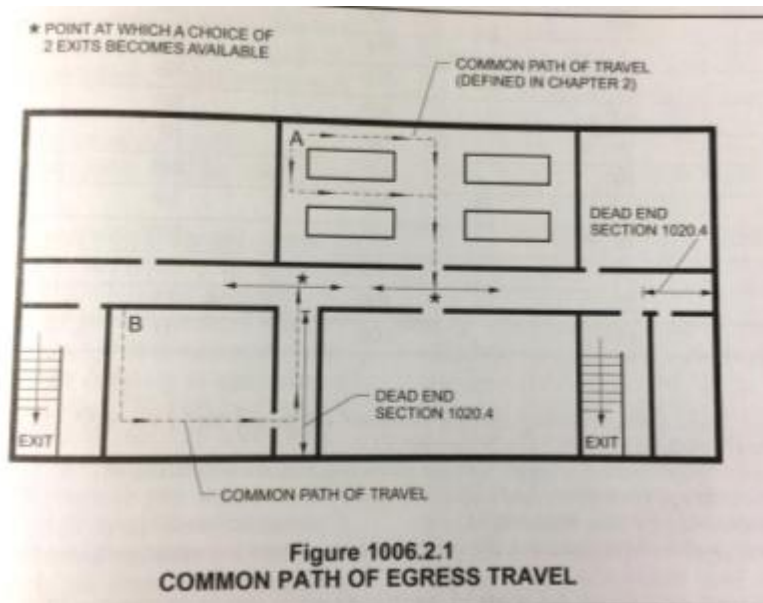
## IBC 2-2

### Coordination of IEBC and IBC Single exit tables

Reason: There is a conflict in terms for single exit criteria for stories/buildings in the IBC and IEBC. Below is the definition for common path of egress travel and exit access. Single exit stories/buildings cannot have a common path of egress travel since two exits are not ever required. The correct term is exit access travel distance. This would be consistent with the single exit tables for stories in the IEBC and the footnotes for the single exit tables for stories (1006.3) in the IBC. With the text incorrectly used in IBC Section 1006.3.3, if a single exit building uses an enclosed exit stairway, the travel distance to a place where there are two exits is the ground floor. Exit access travel distance should stop at the door to the exit stairway. See after the proposal for the history in the terms in the single exit stories/buildings requirements. The term "common path of travel" is appropriate in the single exit space provisions in Section 1006.2.

**COMMON PATH OF EGRESS TRAVEL.** That portion of the *exit access* travel distance measured from the most remote point within a *story* to that point where the occupants have separate access to two *exits* or *exit access* doorways.

**EXIT ACCESS.** That portion of a *means of egress* system that leads from any occupied portion of a building or structure to an *exit*.



**1006.3.3\_Single exits.** A single *exit* or access to a single *exit* shall be permitted from any *story* or occupied roof where one of the following conditions exists:

1. The *occupant load*, number of *dwelling units* and ~~common path of egress~~ exit access travel distance does not exceed the values in Table 1006.3.3(1) or 1006.3.3(2).
2. Rooms, areas and spaces complying with Section 1006.2.1 with *exits* that discharge directly to the exterior at the *level of exit discharge*, are permitted to have one *exit* or access to a single *exit*.
3. Parking garages where vehicles are mechanically parked shall be permitted to have one *exit* or access to a single *exit*.
4. Group R-3 and R-4 occupancies shall be permitted to have one *exit* or access to a single *exit*.
5. Individual single-story or multistory *dwelling units* shall be permitted to have a single *exit* or access to a single *exit* from the *dwelling unit* provided that both of the following criteria are met:
  - 5.1. The *dwelling unit* complies with Section 1006.2.1 as a space with one *means of egress*.
  - 5.2. Either the *exit* from the *dwelling unit* discharges directly to the exterior at the *level of exit discharge*, or the *exit access* outside the *dwelling unit*'s entrance door provides access to not less than two approved independent *exits*.

TABLE 1006.3.3(1)  
STORIES WITH ONE EXIT OR ACCESS TO ONE EXIT FOR R-2 OCCUPANCIES

STORY	OCCUPANCY	MAXIMUM NUMBER OF DWELLING UNITS	MAXIMUM <b>COMMON PATH OF EGRESS EXIT ACCESS</b> TRAVEL DISTANCE
Basement, first, second or third story above grade plane	R-2 <sup>a, b</sup>	4 dwelling units	125 feet
Fourth story above grade plane and higher	NP	NA	NA

For SI: 1 foot = 3048 mm.  
NP = Not Permitted  
NA = Not Applicable.

- a. Buildings classified as Group R-2 equipped throughout with an *automatic sprinkler system* in accordance with Section 903.3.1.1 or 903.3.1.2 and provided with *emergency escape and rescue openings* in accordance with Section 1030.
- b. This table is used for R-2 occupancies consisting of *dwelling units*. For R-2 occupancies consisting of *sleeping units*, use Table 1006.3.3(2).

**E27-15 (AS) E29-15 (AS)**

TABLE 1006.3.3(2)  
STORIES WITH ONE EXIT OR ACCESS TO ONE EXIT FOR OTHER OCCUPANCIES

STORY	OCCUPANCY	MAXIMUM OCCUPANT LOAD PER STORY	MAXIMUM COMMON PATH OF EGRESS EXIT ACCESS TRAVEL DISTANCE (feet)
First story above or below grade plane	A, B <sup>b</sup> , E F <sup>b</sup> , M, U	49	75
	H-2, H-3	3	25
	H-4, H-5, I, R-1, R-2 <sup>a, c</sup>	10	75
	S <sup>b, d</sup>	29	75
Second story above grade plane	B, F, M, S <sup>d</sup>	29	75
Third story above grade plane and higher	NP	NA	NA

For SI: 1 foot = 304.8 mm.  
NP = Not Permitted.  
NA = Not Applicable.

- a. Buildings classified as Group R-2 equipped throughout with an *automatic sprinkler system* in accordance with Section 903.3.1.1 or 903.3.1.2 and provided with *emergency escape and rescue openings* in accordance with Section 1030.

- b. Group B, F and S occupancies in buildings equipped throughout with an *automatic sprinkler system* in accordance with Section 903.3.1.1 shall have a maximum **exit access travel distance** of 100 feet.
- c. This table is used for R-2 occupancies consisting of *sleeping units*. For R-2 occupancies consisting of *dwelling units*, use Table 1006.3.3(1).
- d. The length of **exit access travel distance** in a Group S-2 *open parking garage* shall be not more than 100 feet

IEBC (Level 2 alteraion)

805.3.1.1 **Single-exit buildings**. A single exit or access to a single exit shall be permitted from spaces, any story or any occupied roof where one of the following exist:

1. The occupant load, number of dwelling units and **exit access travel distance** do not exceed the values in Table 805.3.1.1(1) or 805.3.1.1(2).
2. In Group R-1 or R-2, non-sprinklered buildings, individual single-story or multistory dwelling or sleeping units shall be permitted to have a single exit or access to a single exit from the dwelling or sleeping unit provided one of the following criteria are met:
  - 2.1. The occupant load is not greater than 10 and the exit access travel distance within the unit does not exceed 75 feet (22 860 mm).
  - 2.2. The building is not more than three stories in height; all 3rd story space is part of dwelling with an exit access doorway on the 2nd story; and the portion of the exit access travel distance from the door to any habitable room within any such unit to the unit entrance doors does not exceed 50 feet (15 240 mm).
3. In buildings of Group R-2 occupancy of any number of stories with not more than four dwelling units per floor served by an interior exit stairway; with a smokeproof enclosure in accordance with Section 909.20 and 1023.11 of the *International Building Code* or an exterior stairway as an exit; where the portion of the **exit access travel distance** from the dwelling unit entrance door to the exit is a maximum of 20 ft. (6096 mm)

**TABLE 805.3.1.1(1)  
STORIES WITH ONE EXIT OR ACCESS TO ONE EXIT FOR R-2 OCCUPANCIES**

STORY	OCCUPANCY	MAXIMUM NUMBER OF DWELLING UNITS	MAXIMUM <b>EXIT ACCESS TRAVEL DISTANCE</b>
Basement, First or second story above grade plane	R-2 <sup>2</sup>	4 dwelling units	50 feet

Third story above grade plane and higher	NP	NA	NA
--	----	----	----

For SI: 1 foot=3048  
 NP=Not Permitted.  
 NA=Not Applicable.

- a. Group R-2, non-sprinklered and provided with emergency escape and rescue openings in accordance with Section 1030 of the International Building Code.

**TABLE 805.3.1.1(2)  
 STORIES WITH ONE EXIT OR ACCESS TO ONE EXIT FOR OTHER OCCUPANCIES**

<b>STORY</b>	<b>OCCUPANCY</b>	<b>MAXIMUM OCCUPANTS LOAD PER STORY</b>	<b>MAXIMUM EXIT ACCESS TRAVEL DISTANCE (feet)</b>
First story above or below grade plane	B, F-2, S-2 <sup>a</sup>	35	75
Second story above grade plane	B, F-2, S-2 <sup>a</sup>	35	75
Third story above grade plane and higher	NP	NA	NA

For SI: 1 foot = 304.8mm.  
 NP=Not Permitted  
 NA=Not Applicable

- a. The length of **exit access travel distance** in a Group S-2 open parking garage shall be not more than 100 feet (30 480mm).

## Common path of egress travel history of use

Key:

'common path of egress travel' is highlighted blue

'common path' of travel' or 'common path' is highlighted in yellow

*Notes regarding changes are italicized and in red.  
2018 text is shown in legislative format.*

## 2000 IBC

**COMMON PATH OF EGRESS TRAVEL.** That portion of exit access which the occupants are required to traverse before two separate and distinct paths of egress travel to two exits are available. Paths that merge are **common paths** of travel. **Common paths of egress travel** shall be included within the permitted travel distance.

**505.3 Egress.** Each occupant of a mezzanine shall have access to at least two independent means of egress where the **common path of egress travel** exceeds the limitations of Section 1004.2.5. Where a stairway provides a means of exit access from a mezzanine, the maximum travel distance includes the distance traveled on the stairway measured in the plane of the tread nosing.

**Exception:** A single means of egress shall be permitted in accordance with Section 1004.2.1.

**1004.2.1 Exit or exit access doorways required.** Two exits or exit access doorways from any space shall be provided where one of the following conditions exists:

1. The occupant load of the space exceeds the values in Table 1004.2.1.
2. The **common path of egress travel** exceeds the limitations of Section 1004.2.5.

**1004.2.5 Common path of egress travel.** In occupancies other than Groups H-1, H-2 and H-3, the **common path of egress travel** shall not exceed 75 feet (22 860 mm). In occupancies in Groups H-1, H-2, and H-3 the **common path of egress travel** shall not exceed 25 feet (7620 mm).

**Exceptions:**

1. The length of a **common path of egress travel** in an occupancy in Groups B, F and S shall not be more than 100 feet (30 480 mm), provided that the building is equipped throughout with an automatic sprinkler system installed in accordance with Section 903.3.1.1.
2. Where a tenant space in an occupancy in Groups B, S and U has an occupant load of not more than 30, the length of a **common path of egress travel** shall not be more than 100 feet (30 480 mm).
3. The length of a **common path of egress travel** in occupancies in Group I-3 shall not be more than 100 feet (30 480 mm).

## 2000 IFC

**1010.17.4 Common path of egress travel.** The **common path of egress travel** shall not exceed the distances given Table 1010.17.2.

TABLE 1027.17.2

**COMMON PATH, DEAD-END AND TRAVEL DISTANCE LIMITS (by occupancy)**

OCCUPANCY	COMMON PATH LIMIT		DEAD-END LIMIT		TRAVEL DISTANCE LIMIT	
	Unsprinklered (feet)	Sprinklered (feet)	Unsprinklered (feet)	Sprinklered (feet)	Unsprinklered (feet)	Sprinklered (feet)

*Remainder of table not shown*

For SI: 1 foot = 304.8 mm.

a. 20 feet for **common path** serving less than 50 persons; 75 feet for **common path** serving 50 or more persons.

b. See Section 1008.7.5 for dead-end aisles in Group A occupancies.

c. This dimension is for the total travel distance, assuming incremental portions have fully utilized their allowable maximums. For travel distance within the room, and from the room exit access door to the exit, see the appropriate occupancy chapter.

d. See the *International Building Code* for special requirements on spacing of doors in aircraft hangars.

e. As applicable in Section 1001.1.

NR = No requirements.

---

## 2003 IBC

**COMMON PATH OF EGRESS TRAVEL.** That portion of exit access which the occupants are required to traverse before two separate and distinct paths of egress travel to two exits are available. Paths that merge are **common paths** of travel. **Common paths of egress travel** shall be included within the permitted travel distance.

**505.3 Egress.** Each occupant of a mezzanine shall have access to at least two independent means of egress where the **common path of egress travel** exceeds the limitations of Section 1004.2.5. Where a stairway provides a means of exit access from a mezzanine, the maximum travel distance includes the distance traveled on the stairway measured in the plane of the tread nosing.

**Exceptions:**

1. A single means of egress shall be permitted in accordance with Section 1004.2.1.
2. Accessible means of egress shall be provided in accordance with Section 1003.2.13.

*(Exception 3 added to address accessible means of egress in tiered assembly seating)*

**1007.1 Accessible means of egress required.** Accessible means of egress shall comply with this section. Accessible spaces shall be provided with not less than one accessible means of egress. Where more than one means of egress is required by Section 1014.1 or 1018.1 from any accessible space, each accessible portion of the space shall be served by not less than two accessible means of egress.

**Exceptions:**

1. Accessible means of egress are not required in alterations to existing buildings.
2. One accessible means of egress is required from an accessible mezzanine level in accordance with Section 1007.3 or 1007.4.
3. In assembly spaces with sloped floors, one accessible means of egress is required from a space where the **common path** of travel of the accessible route for access to the wheelchair spaces meets the requirements in Section 1024.8.

**1013.3 Common path of egress travel.** In occupancies other than Groups H-1, H-2 and H-3, the **common path of egress travel** shall not exceed 75 feet (22 860 mm). In occupancies in Groups H-1, H-2, and H-3, the **common path of egress travel** shall not exceed 25 feet (7620 mm).

**Exceptions:**

1. The length of a **common path of egress travel** in an occupancy in Groups B, F and S shall not be more than 100 feet (30 480 mm), provided that the building is equipped throughout with an automatic sprinkler system installed in accordance with Section 903.3.1.1.
2. Where a tenant space in an occupancy in Groups B, S and U has an occupant load of not more than 30, the length of a **common path of egress travel** shall not be more than 100 feet (30 480 mm).

- The length of a **common path of egress travel** in occupancies in Group I-3 shall not be more than 100 feet (30 480 mm).

**SECTION 1014  
EXIT AND EXIT ACCESS DOORWAYS**

**1014.1 Exit or exit access doorways required.** Two exits or exit access doorways from any space shall be provided where one of the following conditions exists:

- The occupant load of the space exceeds the values in Table 1014.1.
- The **common path of egress travel** exceeds the limitations of Section 1013.3.

**1024.8 Common path of travel.** The **common path** of travel shall not exceed 30 feet (9144 mm) from any seat to a point where a person has a choice of two paths of egress travel to two exits.

**Exceptions:**

- For areas serving not more than 50 occupants, the **common path** of travel shall not exceed 75 feet (22860 mm).
- For smoke-protected assembly seating, the **common path** of travel shall not exceed 50 feet (15 240 mm).

**2003 IFC**

**1027.17.4 Common path of egress travel.** The **common path of egress travel** shall not exceed the distances given Table 1027.17.2.

**TABLE 1027.17.2  
COMMON PATH, DEAD-END AND TRAVEL DISTANCE LIMITS (by occupancy)**

OCCUPANCY	COMMON PATH LIMIT		DEAD-END LIMIT		TRAVEL DISTANCE LIMIT	
	Unsprinklered (feet)	Sprinklered (feet)	Unsprinklered (feet)	Sprinklered (feet)	Unsprinklered (feet)	Sprinklered (feet)

Remainder of table not shown

For SI: 1 foot = 304.8 mm.

- 20 feet for **common path** serving 50 or more persons; 75 feet for **common path** serving less than 50 persons.
  - See Section 1025.9.5 for dead-end aisles in Group A occupancies.
  - This dimension is for the total travel distance, assuming incremental portions have fully utilized their allowable maximums. For travel distance within the room, and from the room exit access door to the exit, see the appropriate occupancy chapter.
  - See the *International Building Code* for special requirements on spacing of doors in aircraft hangars.
- NR = No requirements.

**2006 IBC**

**COMMON PATH OF EGRESS TRAVEL.** That portion of exit access which the occupants are required to traverse before two separate and distinct paths of egress travel to two exits are available. Paths that merge are **common paths** of travel. **Common paths of egress travel** shall be included within the permitted travel distance.



**505.3 Egress.** Each occupant of a mezzanine shall have access to at least two independent means of egress where the **common path of egress travel** exceeds the limitations of Section 1014.3. Where a stairway provides a means of exit access from a mezzanine, the maximum travel distance includes the distance traveled on the stairway measured in the plane of the tread nosing. Accessible means of egress shall be provided in accordance with Section 1007.

**Exception:** A single means of egress shall be permitted in accordance with Section 1015.1.

## **SECTION 1007**

### **ACCESSIBLE MEANS OF EGRESS**

**1007.1 Accessible means of egress required.** Accessible means of egress shall comply with this section. Accessible spaces shall be provided with not less than one accessible means of egress. Where more than one means of egress is required by Section 1015.1 or 1019.1 from any accessible space, each accessible portion of the space shall be served by not less than two accessible means of egress.

#### **Exceptions:**

1. Accessible means of egress are not required in alterations to existing buildings.
2. One accessible means of egress is required from an accessible mezzanine level in accordance with Section 1007.3, 1007.4 or 1007.5.
3. In assembly spaces with sloped floors, one accessible means of egress is required from a space where the **common path** of travel of the accessible route for access to the wheelchair spaces meets the requirements in Section 1025.8.

**1014.3 Common path of egress travel.** In occupancies other than Groups H-1, H-2 and H-3, the **common path of egress travel** shall not exceed 75 feet (22 860 mm). In Group H-1, H-2 and H-3 occupancies, the **common path of egress travel** shall not exceed 25 feet (7620 mm). For **common path of egress travel** in Group A occupancies having fixed seating, see Section 1025.8.

#### **Exceptions:**

1. The length of a **common path of egress travel** in Group B, F and S occupancies shall not be more than 100 feet (30 480 mm), provided that the building is equipped throughout with an automatic sprinkler system installed in accordance with Section 903.3.1.1.
2. Where a tenant space in Group B, S and U occupancies has an occupant load of not more than 30, the length of a **common path of egress travel** shall not be more than 100 feet (30 480 mm).
3. The length of a **common path of egress travel** in a Group I-3 occupancy shall not be more than 100 feet (30 480 mm).
4. The length of a **common path of egress travel** in a Group R-2 occupancy shall not be more than 125 feet (38 100 mm), provided that the building is protected throughout with an approved automatic sprinkler system in accordance with Section 903.3.1.1.

**1014.4.2 Aisle accessways in Group M.** An aisle accessway shall be provided on at least one side of each element within the merchandise pad. The minimum clear width for an aisle accessway not required to be accessible shall be 30 inches (762 mm). The required clear width of the aisle accessway shall be measured perpendicular to the elements and merchandise within the merchandise pad. The 30-inch (762 mm) minimum clear width shall be maintained to provide a path to an adjacent aisle or aisle accessway. The **common path** of travel shall not exceed 30 feet (9144 mm) from any point in the merchandise pad.

**Exception:** For areas serving not more than 50 occupants, the **common path** of travel shall not exceed 75 feet (22 880 mm).

## **SECTION 1015**

### **EXIT AND EXIT ACCESS DOORWAYS**

**1015.1 Exit or exit access doorways required.** Two exits or exit access doorways from any space shall be provided where one of the following conditions exists:

1. The occupant load of the space exceeds the values in Table 1015.1.

- 2. The **common path of egress travel** exceeds the limitations of Section 1014.3.
- 3. Where required by Sections 1015.3, 1015.4 and 1015.5.

**Exception:** Group I-2 occupancies shall comply with Section 1014.2.2.

**1025.8 Common path of egress travel.** The **common path of egress travel** shall not exceed 30 feet (9144 mm) from any seat to a point where an occupant has a choice of two paths of egress travel to two exits.

**Exceptions:**

- 1. For areas serving less than 50 occupants, the **common path of egress travel** shall not exceed 75 feet (22 860 mm).
- 2. For smoke-protected assembly seating, the **common path of egress travel** shall not exceed 50 feet (15 240 mm).

## 2006 IFC

**1027.17.4 Common path of egress travel.** The **common path of egress travel** shall not exceed the distances given Table 1027.17.2.

**TABLE 1027.17.2  
COMMON PATH, DEAD-END AND TRAVEL DISTANCE LIMITS (by occupancy)**

OCCUPANCY	COMMON PATH LIMIT		DEAD-END LIMIT		TRAVEL DISTANCE LIMIT	
	Unsprinklered (feet)	Sprinklered (feet)	Unsprinklered (feet)	Sprinklered (feet)	Unsprinklered (feet)	Sprinklered (feet)

Remainder of table not shown

For SI: 1 foot = 304.8 mm.

- a. 20 feet for **common path** serving 50 or more persons; 75 feet for **common path** serving less than 50 persons.
  - b. See Section 1025.9.5 for dead-end aisles in Group A occupancies.
  - c. This dimension is for the total travel distance, assuming incremental portions have fully utilized their allowable maximums. For travel distance within the room, and from the room exit access door to the exit, see the appropriate occupancy chapter.
  - d. See the *International Building Code* for special requirements on spacing of doors in aircraft hangars.
- NR = No requirements.

## 2009 IBC

**COMMON PATH OF EGRESS TRAVEL.** That portion of *exit access* which the occupants are required to traverse before two separate and distinct paths of egress travel to two *exits* are available. Paths that merge are **common paths** of travel. **Common paths of egress travel** shall be included within the permitted travel distance.

**505.3 Egress.** Each occupant of a *mezzanine* shall have access to at least two independent *means of egress* where the **common path of egress travel** exceeds the limitations of Section 1014.3. Where a *stairway* provides a means of *exit access* from a *mezzanine*, the maximum travel distance includes the distance traveled on the *stairway* measured in the plane of the tread nosing. *Accessible means of egress* shall be provided in accordance with Section 1007.

**Exception:** A single *means of egress* shall be permitted in accordance with Section 1015.1.

**1014.3 Common path of egress travel.** In occupancies other than Groups H-1, H-2 and H-3, the *common path of egress travel* shall not exceed 75 feet (22 860 mm). In Group H-1, H-2 and H-3 occupancies, the *common path of egress travel* shall not exceed 25 feet (7620 mm). For *common path of egress travel* in Group A occupancies and assembly occupancies accessory to Group E occupancies having fixed seating, see Section 1028.8.

**Exceptions:**

1. The length of a *common path of egress travel* in Group B, F and S occupancies shall not be more than 100 feet (30 480 mm), provided that the building is equipped throughout with an *automatic sprinkler system* installed in accordance with Section 903.3.1.1.
2. Where a tenant space in Group B, S and U occupancies has an *occupant load* of not more than 30, the length of a *common path of egress travel* shall not be more than 100 feet (30 480 mm).
3. The length of a *common path of egress travel* in a Group I-3 occupancy shall not be more than 100 feet (30 480 mm).
4. The length of a *common path of egress travel* in a Group R-2 occupancy shall not be more than 125 feet (38 100 mm), provided that the building is protected throughout with an *approved automatic sprinkler system* in accordance with Section 903.3.1.1 or 903.3.1.2.

## SECTION 1015

### EXIT AND EXIT ACCESS DOORWAYS

**1015.1 Exits or exit access doorways from spaces.** Two *exits* or *exit access doorways* from any space shall be provided where one of the following conditions exists:

**Exception:** Group I-2 occupancies shall comply with Section 1014.2.2 through 1014.2.7.

1. The *occupant load* of the space exceeds one of the values in Table 1015.1.

**Exception:** In Group R-2 and R-3 occupancies, one *means of egress* is permitted within and from individual dwelling units with a maximum *occupant load* of 20 where the dwelling unit is equipped throughout with an *automatic sprinkler system* in accordance with Section 903.3.1.1 or 903.3.1.2.

2. The *common path of egress travel* exceeds one of the limitations of Section 1014.3.
3. Where required by Section 1015.3, 1015.4, 1015.5, 1015.6 or 1015.6.1.

Where a building contains mixed occupancies, each individual occupancy shall comply with the applicable requirements for that occupancy. Where applicable, cumulative *occupant loads* from adjacent occupancies shall be considered in accordance with the provisions of Section 1004.1.

*(Common path of travel added for Mercantile)*

**1017.3 Aisle accessways in Group M.** An *aisle accessway* shall be provided on at least one side of each element within the *merchandise pad*. The minimum clear width for an *aisle accessway* not required to be *accessible* shall be 30 inches (762 mm). The required clear width of the *aisle accessway* shall be measured perpendicular to the elements and merchandise within the *merchandise pad*. The 30-inch (762 mm) minimum clear width shall be maintained to provide a path to an adjacent *aisle* or *aisle accessway*. The *common path* of travel shall not exceed 30 feet (9144 mm) from any point in the *merchandise pad*.

**Exception:** For areas serving not more than 50 occupants, the *common path* of travel shall not exceed 75 feet (22 880 mm).

**1028.8 Common path of egress travel.** The *common path of egress travel* shall not exceed 30 feet (9144 mm) from any seat to a point where an occupant has a choice of two paths of egress travel to two *exits*.

**Exceptions:**

1. For areas serving less than 50 occupants, the *common path of egress travel* shall not exceed 75 feet (22 860 mm).
2. For *smoke-protected assembly seating*, the *common path of egress travel* shall not exceed 50 feet (15 240 mm).

## 2009 IFC

**1104.19 Common path of egress travel.** The *common path of egress travel* shall not exceed the distances given in Table 1104.17.2.

**TABLE 1104.17.2  
COMMON PATH, DEAD-END AND TRAVEL DISTANCE LIMITS (by occupancy)**

OCCUPANCY	COMMON PATH LIMIT		DEAD-END LIMIT		TRAVEL DISTANCE LIMIT	
	Unsprinklered (feet)	Sprinklered (feet)	Unsprinklered (feet)	Sprinklered (feet)	Unsprinklered (feet)	Sprinklered (feet)

Remainder of table not shown

NR = No requirements.

For SI: 1 foot = 304.8 mm, 1 square foot = 0.0929 m<sup>2</sup>.

a. 20 feet for **common path** serving 50 or more persons; 75 feet for **common path** serving less than 50 persons.

b. See Section 1028.9.5 for dead-end aisles in Group A occupancies.

c. This dimension is for the total travel distance, assuming incremental portions have fully utilized their allowable maximums. For travel distance within the room, and from the room exit access door to the exit, see the appropriate occupancy chapter.

d. See the *International Building Code* for special requirements on spacing of doors in aircraft hangars.

e. Any patient sleeping room, or any suite that includes patient sleeping rooms, of more than 1,000 square feet shall have at least two exit access doors placed a distance apart equal to not less than one-third of the length of the maximum overall diagonal dimension of the patient sleeping room or suite to be served, measured in a straight line between exit access doors.

f. Where a tenant space in Group B, S and U occupancies has an occupant load of not more than 30, the length of a **common path of egress travel** shall not be more than 100 feet.

## 2012 IBC

**COMMON PATH OF EGRESS TRAVEL.** That portion of *exit access* which the occupants are required to traverse before two separate and distinct paths of egress travel to two *exits* are available. Paths that merge are **common path**s of travel. **Common paths of egress travel** shall be included within the permitted travel distance.

*(Common path of travel added with reworking of Section 410)*

### SECTION 410

#### STAGES, PLATFORMS AND TECHNICAL PRODUCTION AREAS

**410.6.3.3 Two means of egress.** Where two *means of egress* are required, the **common path** of travel shall be not greater than 100 feet (30 480 mm).

**Exception:** A means of escape to a roof in place of a second *means of egress* is permitted.

*(Mezzanine egress requirement revised to reference Chapter 10 rather than have separate requirements in Section 505)*

**505.2.2 Means of egress.** The *means of egress* for *mezzanines* shall comply with the applicable provisions of Chapter 10.

**1007.1 Accessible means of egress required.** *Accessible means of egress* shall comply with this section. *Accessible* spaces shall be provided with not less than one *accessible means of egress*. Where more than one *means of egress* are required by Section 1015.1 or 1021.1 from any *accessible* space, each *accessible* portion of the space shall be served by not less than two *accessible means of egress*.

#### Exceptions:

1. *Accessible means of egress* are not required in alterations to existing buildings.

2. One *accessible means of egress* is required from an *accessible mezzanine* level in accordance with Section 1007.3, 1007.4 or 1007.5.
3. In assembly areas with sloped or stepped *aisles*, one *accessible means of egress* is permitted where the **common path** of travel is *accessible* and meets the requirements in Section 1028.8.

**1014.3 Common path of egress travel.** The **common path of egress travel** shall not exceed the **common path of egress travel** distances in Table 1014.3.

**TABLE 1014.3  
COMMON PATH OF EGRESS TRAVEL**

OCCUPANCY	WITHOUT SPRINKLER SYSTEM (feet)		WITH SPRINKLER SYSTEM (feet)
	Occupant Load		
	≤ 30	> 30	
B, S <sub>d</sub>	100	75	100 <sup>a</sup>
U	100	75	75 <sup>a</sup>
F	75	75	100 <sup>a</sup>
H-1, H-2, H-3	Not Permitted	Not Permitted	25 <sup>a</sup>
R-2	75	75	125 <sup>b</sup>
R-3 <sub>e</sub>	75	75	125 <sup>b</sup>
I-3	100	100	100 <sup>a</sup>
All others <sup>c, f</sup>	75	75	75 <sup>a, b</sup>

For SI: 1 foot = 304.8 mm.

- a. Buildings equipped throughout with an *automatic sprinkler system* in accordance with Section 903.3.1.1.
- b. Buildings equipped throughout with an *automatic sprinkler system* in accordance with Section 903.3.1.1 or 903.3.1.2. See Section 903 for occupancies where *automatic sprinkler systems* are permitted in accordance with Section 903.3.1.2.
- c. For a room or space used for assembly purposes having *fixed seating*, see Section 1028.8.
- d. The length of a **common path of egress travel** in a Group S-2 *open parking garage* shall not be more than 100 feet (30 480 mm).
- e. The length of a **common path of egress travel** in a Group R-3 occupancy located in a mixed occupancy building.
- f. For the distance limitations in Group I-2, see Section 407.4.

## SECTION 1015 EXIT AND EXIT ACCESS DOORWAYS

**1015.1 Exits or exit access doorways from spaces.** Two *exits* or *exit access* doorways from any space shall be provided where one of the following conditions exists:

1. The *occupant load* of the space exceeds one of the values in Table 1015.1.

**Exceptions:**

1. In Group R-2 and R-3 occupancies, one *means of egress* is permitted within and from individual dwelling units with a maximum *occupant load* of 20 where the dwelling unit is equipped throughout with an *automatic sprinkler system* in accordance with Section 903.3.1.1 or 903.3.1.2.
2. Care suites in Group I-2 occupancies complying with Section 407.4.3.
2. The **common path of egress travel** exceeds one of the limitations of Section 1014.3.
3. Where required by Section 1015.3, 1015.4, 1015.5, or 1015.6.

Where a building contains mixed occupancies, each individual occupancy shall comply with the applicable requirements for that occupancy. Where applicable, cumulative *occupant loads* from adjacent occupancies shall be considered in accordance with the provisions of Section 1004.1.

**1017.4 Aisle accessways in Group M.** An *aisle accessway* shall be provided on at least one side of each element within the *merchandise pad*. The minimum clear width for an *aisle accessway* not required to be *accessible* shall be 30 inches (762 mm). The required clear width of the *aisle accessway* shall be measured perpendicular to the elements and merchandise within the *merchandise pad*. The 30-inch (762 mm) minimum clear width shall be maintained to provide a path to an adjacent *aisle* or *aisle accessway*. The *common path of egress travel* shall not exceed 30 feet (9144 mm) from any point in the *merchandise pad*.

**Exception:** For areas serving not more than 50 occupants, the *common path of egress travel* shall not exceed 75 feet (22 860 mm).

*Single exit building tables – uses exit access travel distance*

**1021.2 Exits from stories.** Two *exits*, or *exit access stairways* or *ramps* providing access to *exits*, from any story or occupied roof shall be provided where one of the following conditions exists:

1. The *occupant load* or number of *dwelling units* exceeds one of the values in Table 1021.2(1) or 1021.2(2).
2. The *exit access* travel distance exceeds that specified in Table 1021.2(1) or 1021.2(2) as determined in accordance with the provisions of Section 1016.1.
3. *Helistop* landing areas located on buildings or structures shall be provided with two *exits*, or *exit access stairways* or *ramps* providing access to exits.

**Exceptions:**

1. Rooms, areas and spaces complying with Section 1015.1 with *exits* that discharge directly to the exterior at the *level of exit discharge*, are permitted to have one *exit*.
2. Group R-3 occupancy buildings shall be permitted to have one *exit*.
3. Parking garages where vehicles are mechanically parked shall be permitted to have one *exit*.
4. Air traffic control towers shall be provided with the minimum number of *exits* specified in Section 412.3.
5. Individual *dwelling units* in compliance with Section 1021.2.3.
6. Group R-3 and R-4 congregate residences shall be permitted to have one *exit*.
7. *Exits* serving specific spaces or areas need not be accessed by the remainder of the story when all of the following are met:
  - 7.1. The number of *exits* from the entire story complies with Section 1021.2.4;
  - 7.2. The access to *exits* from each individual space in the story complies with Section 1015.1; and
  - 7.3. All spaces within each portion of a story shall have access to the minimum number of *approved* independent *exits* based on the *occupant load* of that portion of the story, but not less than two exits.

**TABLE 1021.2(1)  
STORIES WITH ONE EXIT OR ACCESS TO ONE EXIT FOR R-2 OCCUPANCIES**

STORY	OCCUPANCY	MAXIMUM NUMBER OF DWELLING UNITS	MAXIMUM EXIT ACCESS TRAVEL DISTANCE
Basement, first, second or third story	R-2 <sub>a, b</sub>	4 dwelling units	125 feet
Fourth story and above	NP	NA	NA

For SI: 1 foot = 304.8 mm.

NP – Not Permitted

NA – Not Applicable

a. Buildings classified as Group R-2 equipped throughout with an *automatic sprinkler system* in accordance with Section 903.3.1.1 or 903.3.1.2 and provided with *emergency escape and rescue openings* in accordance with Section 1029.

b. This table is used for R-2 occupancies consisting of *dwelling units*. For R-2 occupancies consisting of *sleeping units*, use Table 1021.2(2).

**TABLE 1021.2(2)**

**STORIES WITH ONE EXIT OR ACCESS TO ONE EXIT FOR OTHER OCCUPANCIES**

STORY	OCCUPANCY	MAXIMUM OCCUPANTS PER STORY	MAXIMUM EXIT ACCESS TRAVEL DISTANCE
First story or basement	A, B <sub>b</sub> , E, F <sub>b</sub> , M, U, S <sub>b</sub>	49 occupants	75 feet
	H-2, H-3	3 occupants	25 feet
	H-4, H-5, I, R-1, R-2 <sub>a,c</sub> , R-4	10 occupants	75 feet
	S	29 occupants	100 feet
Second story	B, F, M, S	29 occupants	75 feet
Third story and above	NP	NA	NA

For SI: 1 foot = 304.8 mm.

NP – Not Permitted

NA – Not Applicable

a. Buildings classified as Group R-2 equipped throughout with an *automatic sprinkler system* in accordance with Section 903.3.1.1 or 903.3.1.2 and provided with *emergency escape and rescue openings* in accordance with Section 1029.

b. Group B, F and S occupancies in buildings equipped throughout with an *automatic sprinkler system* in accordance with Section 903.3.1.1 shall have a maximum travel distance of 100 feet.

c. This table is used for R-2 occupancies consisting of *sleeping units*. For R-2 occupancies consisting of *dwelling units*, use Table 1021.2(1).

**1028.8 Common path of egress travel.** The *common path of egress travel* shall not exceed 30 feet (9144 mm) from any seat to a point where an occupant has a choice of two paths of egress travel to two *exits*.

**Exceptions:**

1. For areas serving less than 50 occupants, the *common path of egress travel* shall not exceed 75 feet (22 860 mm).
2. For *smoke-protected assembly seating*, the *common path of egress travel* shall not exceed 50 feet (15 240 mm).

## IFC 2012

**1104.19 Common path of egress travel.** The *common path of egress travel* shall not exceed the distances given in Table 1104.17.2.

**TABLE 1104.17.2**

**COMMON PATH, DEAD-END AND TRAVEL DISTANCE LIMITS (by occupancy)**

OCCUPANCY	COMMON PATH LIMIT		DEAD-END LIMIT		TRAVEL DISTANCE LIMIT	
	Unsprinklered (feet)	Sprinklered (feet)	Unsprinklered (feet)	Sprinklered (feet)	Unsprinklered (feet)	Sprinklered (feet)

Remainder of table not shown

NR = No requirements.

For SI: 1 foot = 304.8 mm, 1 square foot = 0.0929 m<sup>2</sup>.

a. 20 feet for *common path* serving 50 or more persons; 75 feet for *common path* serving less than 50 persons.

b. See Section 1028.9.5 for dead-end aisles in Group A occupancies.

c. This dimension is for the total travel distance, assuming incremental portions have fully utilized their allowable maximums. For travel distance within the room, and from the room exit access door to the exit, see the appropriate occupancy chapter.

d. See the *International Building Code* for special requirements on spacing of doors in aircraft hangars.

e. Any patient sleeping room, or any suite that includes patient sleeping rooms, of more than 1,000 square feet shall have at least two exit access doors placed a distance apart equal to not less than one-third of the length of the maximum overall diagonal dimension of the patient sleeping room or suite to be served, measured in a straight line between exit access doors.

f. Where a tenant space in Group B, S and U occupancies has an occupant load of not more than 30, the length of a *common path of egress travel* shall not be more than 100 feet.



# 2015 IBC

*(First time definition changed - E1-12 AS, G57-12 AS)*

**CSOMMON PATH OF EGRESS TRAVEL.** That portion of the *exit access* travel distance measured from the most remote point within a *story* to that point where the occupants have separate access to two *exits* or *exit access* doorways.

**410.6.3.3 Two means of egress.** Where two *means of egress* are required, the *common path* of travel shall be not greater than 100 feet (30 480 mm).

**Exception:** A means of escape to a roof in place of a second *means of egress* is permitted.

*(Code change E1-12 reorganizes Chapter 10. This change also took 'common path of egress travel requirements out of a separate section and moved it into Table 1006.2. as a column.)*

**1006.2.1 Egress based on occupant load and common path of egress travel distance.** Two *exits* or *exit access doorways* from any space shall be provided where the design *occupant load* or the *common path of egress travel* distance exceeds the values listed in Table 1006.2.1.

**Exceptions:**

1. In Group R-2 and R-3 occupancies, one *means of egress* is permitted within and from individual *dwelling units* with a maximum *occupant load* of 20 where the *dwelling unit* is equipped through-out with an *automatic sprinkler* system in accordance with Section 903.3.1.1 or 903.3.1.2 and the *common path of egress travel* does not exceed 125 feet (38 100 mm).
2. *Care suites* in Group I-2 occupancies complying with Section 407.4.

**TABLE 1006.2.1  
SPACES WITH ONE EXIT OR EXIT ACCESS DOORWAY**

OCCUPANCY	MAXIMUM OCCUPANT LOAD OF SPACE	MAXIMUM COMMON PATH OF EGRESS TRAVEL DISTANCE (feet)		
		Without Sprinkler System (feet)		With Sprinkler System (feet)
		Occupant Load		
		OL ≤ 30	OL > 30	
A <sub>c</sub> , E, M	49	75	75	75 <sub>a</sub>

*Portions of table not shown*

For SI: 1 foot = 304.8 mm.

NP = Not Permitted.

- a. Buildings equipped throughout with an *automatic sprinkler system* in accordance with Section 903.3.1.1 or 903.3.1.2. See Section 903 for occupancies where *automatic sprinkler systems* are permitted in accordance with Section 903.3.1.2.
- b. Group H occupancies equipped throughout with an *automatic sprinkler system* in accordance with Section 903.2.5.
- c. For a room or space used for assembly purposes having *fixed seating*, see Section 1029.8.
- d. For the travel distance limitations in Group I-2, see Section 407.4.
- e. The length of *common path of egress travel* distance in a Group R-3 occupancy located in a mixed occupancy building or within a Group R-3 or R-4 *congregate living facility*.
- f. The length of *common path of egress travel* distance in a Group S-2 *open parking garage* shall be not more than 100 feet.

*(Code change E1-12 reorganizes Chapter 10. This change changes 'exit access travel distance' to 'common path of egress travel' for single exit spaces and buildings in Section 1006.3.2 and the tables. This change is inconsistent with the footnotes, which still use exit access travel distance.)*

**1006.3.2 Single exits.** A single *exit* or access to a single *exit* shall be permitted from any *story* or occupied roof where one of the following conditions exists:



1. The *occupant load*, number of *dwelling units* and *common path of egress travel* does not exceed the values in Table 1006.3.2(1) or 1006.3.2(2).
2. Rooms, areas and spaces complying with Section 1006.2.1 with *exits* that discharge directly to the exterior at the *level of exit discharge*, are permitted to have one *exit* or access to a single *exit*.
3. Parking garages where vehicles are mechanically parked shall be permitted to have one *exit* or access to a single *exit*.
4. Group R-3 and R-4 occupancies shall be permitted to have one *exit* or access to a single *exit*.
5. Individual single-story or multistory *dwelling units* shall be permitted to have a single exit or access to a single *exit* from the *dwelling unit* provided that both of the following criteria are met:
  - 5.1. The *dwelling unit* complies with Section 1006.2.1 as a space with one *means of egress*.
  - 5.2. Either the *exit* from the *dwelling unit* discharges directly to the exterior at the *level of exit discharge*, or the *exit access* outside the dwelling unit's entrance door provides access to not less than two approved independent *exits*.

**TABLE 1006.3.2(1)  
STORIES WITH ONE EXIT OR ACCESS TO ONE EXIT FOR R-2 OCCUPANCIES**

STORY	OCCUPANCY	MAXIMUM NUMBER OF DWELLING UNITS	MAXIMUM COMMON PATH OF EGRESS TRAVEL DISTANCE
Basement, first, second or third story above grade plane	R-2 <sub>a, b</sub>	4 dwelling units	125 feet
Fourth story above grade plane and higher	NP	NA	NA

For SI: 1 foot = 304.8 mm.

NP – Not Permitted

NA – Not Applicable

a. Buildings classified as Group R-2 equipped throughout with an *automatic sprinkler system* in accordance with Section 903.3.1.1 or 903.3.1.2 and provided with *emergency escape and rescue openings* in accordance with Section 1029.

b. This table is used for R-2 occupancies consisting of *dwelling units*. For R-2 occupancies consisting of *sleeping units*, use Table 1021.2(2).

**TABLE 1021.2(2)  
STORIES WITH ONE EXIT OR ACCESS TO ONE EXIT FOR OTHER OCCUPANCIES**

STORY	OCCUPANCY	MAXIMUM OCCUPANTS PER STORY	MAXIMUM COMMON PATH OF EGRESS TRAVEL DISTANCE
First story above or below grade plane	A, B <sub>b</sub> , E, F <sub>b</sub> , M, U, S <sub>b</sub>	49 occupants	75 feet
	H-2, H-3	3 occupants	25 feet
	H-4, H-5, I, R-1, R-2 <sub>a,c</sub> , R-4	10 occupants	75 feet
	S	29 occupants	100 feet
Second story above grade plane	B, F, M, S	29 occupants	75 feet
Third story above grade plane and higher	NP	NA	NA

For SI: 1 foot = 304.8 mm.

NP = Not Permitted.

NA = Not Applicable.

a. Buildings classified as Group R-2 equipped throughout with an *automatic sprinkler system* in accordance with Section 903.3.1.1 or 903.3.1.2 and provided with *emergency escape and rescue openings* in accordance with Section 1030.

b. Group B, F and S occupancies in buildings equipped throughout with an *automatic sprinkler system* in accordance with Section 903.3.1.1 shall have a maximum *exit access* travel distance of 100 feet.

c. This table is used for R-2 occupancies consisting of *sleeping units*. For R-2 occupancies consisting of *dwelling units*, use Table 1006.3.2(1).

d. The length of *exit access* travel distance in a Group S-2 *open parking garage* shall be not more than 100 feet.

## SECTION 1009

### ACCESSIBLE MEANS OF EGRESS

**1009.1 Accessible means of egress required.** Accessible *means of egress* shall comply with this section. Accessible spaces shall be provided with not less than one accessible *means of egress*. Where more than one *means of egress* are required by Section 1006.2 or 1006.3 from any accessible space, each accessible portion of the space shall be served by not less than two accessible *means of egress*.

#### Exceptions:

1. Accessible *means of egress* are not required to be provided in existing buildings.
2. One accessible *means of egress* is required from an accessible mezzanine level in accordance with Section 1009.3, 1009.4 or 1009.5.
3. In assembly areas with ramped aisles or stepped aisles, one accessible *means of egress* is permitted where the common path of egress travel is accessible and meets the requirements in Section 1029.8.

**1018.4 Aisle accessways in Group M.** An aisle accessway shall be provided on not less than one side of each element within the merchandise pad. The minimum clear width for an aisle accessway not required to be accessible shall be 30 inches (762 mm). The required clear width of the aisle accessway shall be measured perpendicular to the elements and merchandise within the merchandise pad. The 30-inch (762 mm) minimum clear width shall be maintained to provide a path to an adjacent aisle or aisle accessway. The common path of egress travel shall not exceed 30 feet (9144 mm) from any point in the merchandise pad.

**Exception:** For areas serving not more than 50 occupants, the common path of egress travel shall not exceed 75 feet (22 860 mm).

**1029.8 Common path of egress travel.** The common path of egress travel shall not exceed 30 feet (9144 mm) from any seat to a point where an occupant has a choice of two paths of egress travel to two exits.

#### Exceptions:

1. For areas serving less than 50 occupants, the common path of egress travel shall not exceed 75 feet (22 860 mm).
2. For smoke-protected assembly seating, the common path of egress travel shall not exceed 50 feet (15 240 mm).

## IFC 2015

**1104.20 Common path of egress travel.** The common path of egress travel shall not exceed the distances given in Table 1104.18.

TABLE 1104.18

**COMMON PATH, DEAD-END AND TRAVEL DISTANCE LIMITS (by occupancy)**

OCCUPANCY	COMMON PATH LIMIT		DEAD-END LIMIT		TRAVEL DISTANCE LIMIT	
	Unsprinklered (feet)	Sprinklered (feet)	Unsprinklered (feet)	Sprinklered (feet)	Unsprinklered (feet)	Sprinklered (feet)

Remainder of table not shown

NR = No requirements.

For SI: 1 foot = 304.8 mm, 1 square foot = 0.0929 m<sup>2</sup>.

a. 20 feet for common path serving 50 or more persons; 75 feet for common path serving less than 50 persons.

b. See Section 1029.9.5 for dead-end aisles in Group A occupancies.

c. This dimension is for the total travel distance, assuming incremental portions have fully utilized their allowable maximums. For travel distance within the room, and from the room exit access door to the exit, see the appropriate occupancy chapter.

d. See the *International Building Code* for special requirements on spacing of doors in aircraft hangars.

- e. In Group I-2, separation of exit access doors within a care recipient sleeping room, or any suite that includes care recipient sleeping rooms, shall comply with Section 1105.5.7.
- f. In Group I-2, in smoke compartments containing care recipient sleeping rooms and treatment rooms, dead-end corridors shall comply with Section 1105.5.6.
- g. In Group I-2 Condition 2, care recipient sleeping rooms, or any suite that includes care recipient sleeping rooms, shall comply with Section 1105.6.
- h. Where a tenant space in Group B, S and U occupancies has an occupant load of not more than 30, the length of a **common path of egress travel** shall not be more than 100 feet.

## IBC 2018

**(E100-15 AS) COMMON PATH OF EGRESS TRAVEL.** That portion of ~~the~~ *exit access* travel distance measured from the most remote point ~~within a story~~ of each room, area or space to that point where the occupants have separate and distinct access to two exits or *exit access doorways*.

**(E16-15 AM, E17-15 AS) 1006.2.1 Egress based on occupant load and common path of egress travel distance.** Two *exits* or *exit access doorways* from any space shall be provided where the design *occupant load* or the *common path of egress travel* distance exceeds the values listed in Table 1006.2.1. The cumulative occupant load from adjacent rooms, areas or spaces shall be determined in accordance with Section 1004.2.

**Exceptions:**

1. The number of exits from foyers, lobbies, vestibules or similar spaces need not be based on cumulative occupant loads for areas discharging through such spaces, but the capacity of the exits from such spaces shall be based on applicable cumulative occupant loads.
1. ~~In Group R-2 and R-3 occupancies, one means of egress is permitted within and from individual dwelling units with a maximum occupant load of 20 where the dwelling unit is equipped throughout with an automatic sprinkler system in accordance with Section 903.3.1.1 or 903.3.1.2 and the common path of egress travel does not exceed 125 feet (38 100 mm).~~
2. *Care suites* in Group I-2 occupancies complying with Section 407.4.

**(E17-15 AS, G133-15 AM) TABLE 1006.2.1  
SPACES WITH ONE EXIT OR EXIT ACCESS DOORWAY**

OCCUPANCY	MAXIMUM OCCUPANT LOAD OF SPACE	MAXIMUM <b>COMMON PATH OF EGRESS TRAVEL</b> DISTANCE (feet) SPACES WITH ONE EXIT OR EXIT ACCESS DOORWAY		
		Without Sprinkler System (feet)		With Sprinkler System (feet)
		Occupant Load		
		OL ≤ 30	OL > 30	
A <sup>c</sup> , E, M	49	75	75	75 <sup>a</sup>
B	49	100	75	100 <sup>a</sup>
F	49	75	75	100 <sup>a</sup>
H-1, H-2, H-3	3	NP	NP	25 <sup>b</sup>
H-4, H-5	10	NP	NP	75 <sup>b</sup>

I-1, I-2 <sup>d</sup> , I-4	10	NP	NP	75 <sup>a</sup>
I-3	10	NP	NP	100 <sup>a</sup>
R-1	10	NP	NP	75 <sup>a</sup>
R-2	<del>10</del> <u>20</u>	NP	NP	125 <sup>a</sup>
R-3 <sup>e</sup>	<del>10</del> <u>20</u>	NP	NP	125 <sup>a, g</sup>
R-4 <sup>e</sup>	<del>10</del> <u>20</u>	<del>75</del> <u>NP</u>	<del>75</del> <u>NP</u>	125 <sup>a, g, a</sup>
S <sup>f</sup>	29	100	75	100 <sup>a</sup>
U	49	100	75	75 <sup>a</sup>

For SI: 1 foot = 304.8 mm.

NP = Not Permitted

- a. Buildings equipped throughout with an *automatic sprinkler system* in accordance with Section 903.3.1.1 or 903.3.1.2. See Section 903 for occupancies where *automatic sprinkler systems* are permitted in accordance with Section 903.3.1.2.
- b. Group H occupancies equipped throughout with an *automatic sprinkler system* in accordance with Section 903.2.5.
- c. For a room or space used for assembly purposes having *fixed seating*, see Section 1029.8.
- d. For the travel distance limitations in Group I-2, see Section 407.4.
- e. The length of *common path of egress travel* distance shall only apply in a Group R-3 occupancy located in a mixed occupancy building or within a Group R-3 or R-4 ~~congregate living facility~~.
- f. The length of *common path of egress travel* distance in a Group S-2 *open parking garage* shall be not more than 100 feet.
- g. For the travel distance limitations in Groups R-3 and R-4 equipped throughout with an automatic sprinkler system in accordance with Section 903.3.1.3, see Section 1006.2.2.6.

**~~1006.3.2~~ 1006.3.3 Single exits.** A single *exit* or access to a single *exit* shall be permitted from any *story* or occupied roof where one of the following conditions exists:

1. The *occupant load*, number of *dwelling units* and *common path of egress travel* distance ~~does~~ do not exceed the values in Table ~~1006.3.2(1)~~ 1006.3.3(1) or ~~1006.3.2(2)~~ 1006.3.3(2).
2. Rooms, areas and spaces complying with Section 1006.2.1 with *exits* that discharge directly to the exterior at the *level of exit discharge*, are permitted to have one *exit* or access to a single *exit*.
3. Parking garages where vehicles are mechanically parked shall be permitted to have one *exit* or access to a single *exit*.
4. Group R-3 and R-4 occupancies shall be permitted to have one *exit* or access to a single *exit*.
5. Individual single-story or multistory *dwelling units* shall be permitted to have a single *exit* or access to a single *exit* from the *dwelling unit* provided that both of the following criteria are met:
  - 5.1. The *dwelling unit* complies with Section 1006.2.1 as a space with one *means of egress*.
  - 5.2. Either the *exit* from the *dwelling unit* discharges directly to the exterior at the *level of exit discharge*, or the *exit access* outside the dwelling unit's entrance door provides access to not less than two approved independent *exits*.

**TABLE ~~1006.3.2(1)~~ 1006.3.3(1)**  
**STORIES WITH ONE EXIT OR ACCESS TO ONE EXIT FOR R-2 OCCUPANCIES**

STORY	OCCUPANCY	MAXIMUM NUMBER OF DWELLING UNITS	MAXIMUM COMMON PATH OF EGRESS TRAVEL DISTANCE
Basement, first, second or third story above grade plane	R-2 <sup>a, b</sup>	4 dwelling units	125 feet
Fourth story above grade plane and higher	NP	NA	NA

For SI: 1 foot = 3048 mm.

NP = Not Permitted.

NA = Not Applicable.

- a. Buildings classified as Group R-2 equipped throughout with an *automatic sprinkler system* in accordance with Section 903.3.1.1 or 903.3.1.2 and provided with *emergency escape and rescue openings* in accordance with Section 1030.
- b. This table is used for R-2 occupancies consisting of *dwelling units*. For R-2 occupancies consisting of *sleeping units*, use Table ~~1006.3.2(2)~~ 1006.3.3 (2).

(E29-15 AS) ~~1006.3.2(2)~~ 1006.3.3(2)  
**STORIES WITH ONE EXIT OR ACCESS TO ONE EXIT FOR OTHER OCCUPANCIES**

STORY	OCCUPANCY	MAXIMUM OCCUPANT LOAD PER STORY	MAXIMUM COMMON PATH OF EGRESS TRAVEL DISTANCE (feet)
First story above or below grade plane	A, B <sup>b</sup> , E F <sup>b</sup> , M, U	49	75
	H-2, H-3	3	25
	H-4, H-5, I, R-1, R-2 <sup>a, c</sup> , <del>R-4</del>	10	75
	S <sup>b, d</sup>	29	75
Second story above grade plane	B, F, M, S <sup>d</sup>	29	75
Third story above grade plane and higher	NP	NA	NA

For SI: 1 foot = 304.8 mm.

NP = Not Permitted.

NA = Not Applicable.

- a. Buildings classified as Group R-2 equipped throughout with an *automatic sprinkler system* in accordance with Section 903.3.1.1 or 903.3.1.2 and provided with *emergency escape and rescue openings* in accordance with Section 1030.
- b. Group B, F and S occupancies in buildings equipped throughout with an *automatic sprinkler system* in accordance with Section 903.3.1.1 shall have a maximum *exit access* travel distance of 100 feet.
- c. This table is used for R-2 occupancies consisting of *sleeping units*. For R-2 occupancies consisting of *dwelling units*, use Table ~~1006.3.2(1)~~ 1006.3.3 (1).
- d. The length of *exit access* travel distance in a Group S-2 *open parking garage* shall be not more than 100 feet.

**(E34-15 AM) 1009.1 Accessible means of egress required.** *Accessible means of egress* shall comply with this section. *Accessible* spaces shall be provided with not less than one *accessible means of egress*. Where more than one *means of egress* are required by Section 1006.2 or 1006.3 from any *accessible* space, each *accessible* portion of the space shall be served by not less than two *accessible means of egress*.

**Exceptions:**

1. ~~*Accessible means of egress* are not required to be provided in existing buildings.~~
1. ~~2.~~ One *accessible means of egress* is required from an *accessible mezzanine* level in accordance with Section 1009.3, 1009.4 or 1009.5.
2. ~~3.~~ In assembly areas with ramped *aisles* or stepped *aisles*, one *accessible means of egress* is permitted where the **common path of egress travel** is *accessible* and meets the requirements in Section 1029.8.

**1018.4 Aisle accessways in Group M.** An *aisle accessway* shall be provided on not less than one side of each element within the *merchandise pad*. The minimum clear width for an *aisle accessway* not required to be *accessible* shall be 30 inches (762 mm). The required clear width of the *aisle accessway* shall be measured perpendicular to the elements and merchandise within the *merchandise pad*. The 30-inch (762 mm) minimum clear width shall be maintained to provide a path to an adjacent *aisle* or *aisle accessway*. The **common path of egress travel** shall not exceed 30 feet (9144 mm) from any point in the *merchandise pad*.

**Exception:** For areas serving not more than 50 occupants, the **common path of egress travel** shall not exceed 75 feet (22 860 mm).

**(E132-15 AS) 1029.8 Common path of egress travel.** The **common path of egress travel** shall not exceed 30 feet (9144 mm) from any seat to a point where an occupant has a choice of two paths of egress travel to two *exits*.

**Exceptions:**

1. For areas serving less than 50 occupants, the **common path of egress travel** shall not exceed 75 feet (22 860 mm).
2. For *smoke-protected* or *open-air* assembly seating, the **common path of egress travel** shall not exceed 50 feet (15 240 mm).

## 2018 IFC

**1104.20 Common path of egress travel.** The **common path of egress travel** shall not exceed the distances given in Table 1104.18.

**TABLE 1104.18  
COMMON PATH, DEAD-END AND TRAVEL DISTANCE LIMITS (by occupancy)**

OCCUPANCY	COMMON PATH LIMIT		DEAD-END LIMIT		TRAVEL DISTANCE LIMIT	
	Unsprinklered (feet)	Sprinklered (feet)	Unsprinklered (feet)	Sprinklered (feet)	Unsprinklered (feet)	Sprinklered (feet)

Remainder of table not shown

NR = No requirements.

For SI: 1 foot = 304.8 mm, 1 square foot = 0.0929 m<sup>2</sup>.

- a. 20 feet for common path serving 50 or more persons; 75 feet for **common path** serving less than 50 persons.
- b. See Section 1029.9.5 for dead-end aisles in Group A occupancies.
- c. This dimension is for the total travel distance, assuming incremental portions have fully utilized their allowable maximums. For travel distance within the room, and from the room exit access door to the exit, see the appropriate occupancy chapter.
- d. See the *International Building Code* for special requirements on spacing of doors in aircraft hangars.
- e. In Group I-2, separation of exit access doors within a care recipient sleeping room, or any suite that includes care recipient sleeping rooms, shall comply with Section 1105.5.7.
- f. In Group I-2, in smoke compartments containing care recipient sleeping rooms and treatment rooms, dead-end corridors shall comply with Section 1105.5.6.

- g. In Group I-2 Condition 2, care recipient sleeping rooms, or any suite that includes care recipient sleeping rooms, shall comply with Section 1105.6.
- h. Where a tenant space in Group B, S and U occupancies has an occupant load of not more than 30, the length of a **common path of egress travel** shall not be more