



# IBM Rational Software Delivery Platform V7.0, desktop products scale the business of global architecture, design, and quality

Description .....	3
Statement of direction .....	9
Offering Information .....	11
Publications .....	11
Technical information .....	11
Software Services .....	15
Ordering information .....	15
Terms and conditions .....	28
IBM Electronic Services .....	30
Prices .....	31
Order now .....	31

---

## At a glance

---

IBM Rational introduces new developer and tester capabilities to better govern the process of software and systems delivery in order to:

- Accelerate service-oriented architecture (SOA) initiatives by accelerating service delivery within a business process model
- Ensure global architectural integrity with improved support for design and asset reconciliation
- Simplify systems and solution delivery with enhanced support for packaged application deployments
- Improve consumability from the latest Eclipse community standards and new IBM collaborative engineering innovation

### For ordering, contact:

Your IBM representative or the Americas Call Centers at

**800-IBM-CALL** Reference: YE001

---

## Overview

---

Organizations today are continually reinventing business services over and over without a structured approach to reuse. They are challenged with connecting and managing disparate IT resources across functions as well as physical locations, and are investing redundantly across IT and systems development projects.

IBM Rational® Software Delivery Platform, desktop products V7.0 offer new capabilities empowering global teams to better implement and manage the delivery of software and systems architectures with improved lifecycle quality.

They enable distributed software and systems development teams to:

- Accelerate SOA initiatives by accelerating service delivery within a business-driven architecture
- Ensure global architectural integrity and software quality, including support for packaged applications
- Simplify modular systems development with improved hardware and software modeling and standards support
- Improve consumability from the latest Eclipse community standards and new IBM collaborative engineering innovation

IBM Rational software development products simplify communication and collaboration across geographically distributed teams. This release enables organizations to ensure architectural integrity and quality across geographically distributed teams and a wide variety of packaged applications and systems for successful end results. Delivery teams can

now leverage improved ease-of-use features and functionality that enable them to integrate and trace requirements across the entire delivery life cycle, synchronize, deploy and run test assets remotely, and ensure quality across software and systems delivery cycles.

V7.0 also offers model-driven development capabilities that include reverse transformations to help team members visualize differences between as-designed and as-built architectures. To compress delivery cycles, IT managers can decompose the models into separately controllable units for parallel development. In addition, the model-driven approach now supports SOA to encourage broad corporate-wide reuse of business services, tighten integration of composite application testing, and accelerate creation of enterprise-level Web services.

Governance infrastructure provides extensive process guidance and best practices for the accelerated creation and reliability of reusable services. Systems development and delivery is a highly technical process of analysis, design, implementation and maintenance. These new products help you govern the entire process, ensuring that all code development, testing, fixes, and maintenance for complex systems are in line with broader business objectives and meet compliance regulations.

These integrated sets of tools expand the proven capabilities of Eclipse 3.2 and extend the Eclipse framework across the enterprise. Additional capabilities can be developed or added with plug-ins from the open source community or with software and technical support from IBM and its ecosystem of IBM Business Partners.

Refer to the Description section for additional, related announcements.

---

## **Key prerequisites**

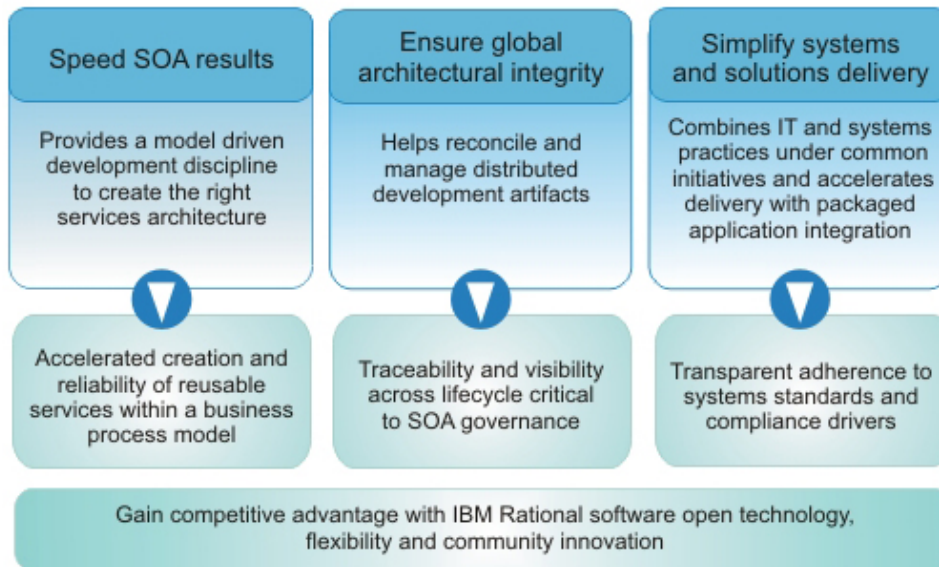
---

Refer to the Hardware requirements and Software requirements sections.

## **Planned availability dates**

- December 5, 2006, electronic software delivery
- December 8, 2006, media and documentation
- December 22, 2006, media and documentation

## IBM Rational Software Delivery Platform v7.0



IBM Rational software is a founding member of the Eclipse open source community. Adoption rates of the Eclipse platform have increased significantly over the past two years, as more and more developers tap into the framework's tools, resources and innovations. The IBM Rational Software Delivery Platform, desktop products V7.0, take advantage of this success by extending support for the Eclipse 3.2 platform and third-party plug-ins.

For more information on IBM Rational products, visit

<http://www.ibm.com/software/rational>

For more information about the IBM Passport Advantage® program, visit

<http://www.ibm.com/software/passportadvantage>

---

### What's new and enhanced in V7.0

---

#### Consumability

- Open computing
  - Adoption of Eclipse 3.2
  - Standards support for Java™ 5, AJAX, Sun JRE
- IBM Runtime Support — WebSphere® Application Server V6.1, WebSphere Portal V6, UDB V9
- Flexibility
  - New installer
  - Ability to install into existing Eclipse
  - Ability to selectively install features
- Usability
  - Performance and scalability improvements
  - User interface improvements

## Quality enhancements

- Improved ease-of-use features
- Enhanced globally distributed development support
- Extended protocol and environment support

## Model-driven development

- UML enhancements
  - Alignment on UML 2.1
  - Expanded notational support for activities
  - Expanded notational support for composite structures
  - New object diagrams
- Java Modeling Enhancements
- C++ Modeling Enhancements
- UML-to-3GL transformation Enhancements
- New 3GL-to-UML Transformations
- New UML-3GL Reconciliation Capability
- New UML to Logical Data Model Transformations
- New Transformation authoring tools

## Development enhancements

- New Web diagram editor
- Web Services improvements — New Web Services wizard
- SOA Toolkit in the box — UML services profile, project templates, process guidance
- J2C enhancements
- Portal development enhancements
- JSF tooling improvements

## Analysis, design, and construction

---

**IBM Rational Application Developer for WebSphere Software** helps developers quickly design, develop, analyze, test, profile, and deploy high-quality Web, SOA, Java, J2EE, and portal applications. Optimized for WebSphere software, this tool provides capabilities for deploying to other runtime platforms, helping customers increase productivity, minimize the learning curve, and shorten development and test cycles.

New and improved

- Web Modeling improvements — New Web Diagram editor
- Improved Web Services Tooling
- Improved JSF Tools
- Improved Portlet Development tools
- Enhanced J2C tools
- Ability to leverage the latest software
  - Eclipse 3.2
  - Java 5
  - J2SE 5.0
  - Sun JRE support

- New supported runtimes — WebSphere Application Server 6.1, UDB V9, Portal V6

**IBM Rational Software Modeler** is a Unified Modeling Language (UML) 2.0-based visual modeling and design tool for architects, systems analysts and designers who are responsible for specifying and maintaining system or software models and designs.

New and improved

- Support for UML2
  - Aligns to final UML 2.1 specifications. 100% of UML abstract syntax is supported
  - New object diagrams
  - Enhanced component, activity and structure diagrams
  - New model search and indexing functionality (improves performance and usability)
- General modeling usability enhancements
- Team modeling enhancements — Break model into fragments for independent configuration management and exclusive checkout. Affords better control in geographically distributed development
- New transformation: transform a UML class model to a Logical Data Model (as supported by Rational Data Architect)
- New transformation authoring tools
  - Graphical development of model to model transformations
  - Exemplar-based authoring of model-to-code transformations, based on JET2
  - Rational Data Architect and RSx shell sharing (install into the same Eclipse instance)

**IBM Rational Systems Developer** is a design and development tool that takes advantage of the full power of Eclipse and includes plug-ins that enable system architects to model complex systems, software architects and model-driven developers to create well-architected C/C++, Java J2SE and CORBA-based applications leveraging Unified Modeling Language (UML 2).

New and improved — Includes all of the Rational Software Modeler enhancements, plus:

- Improved transformation support for C++
  - Model to code reconciliation (reverse transforms) for C++
  - Improved support for reapplying transforms
  - Improved traceability between model and code
- Improved C++ code modeling
  - Improved usability
  - Improved support for C++ templates
  - Improved diagram refactoring support
- Includes Eclipse CDT 3.1
- Includes RUP® process guidance with RUP SE content
- Enhanced DoDAF support
- Leveraged rich systems development partner ecosystem
  - SysML support through Embedded Plus
  - WindRiver Workbench integration
- Improved migration from IBM Rational Rose®

**IBM Rational Software Architect** is an advanced, model-driven development and static analysis tool for software architects and model-driven developers who are creating SOA, J2EE and portal applications. This integrated design and development tool leverages model-driven development with UML for creating well-architected applications and services across teams of designers and developers.

New and improved — Includes all the benefits of Rational Software Modeler V7.0 and Rational Application Developer V7.0 plus:

- Modeling improvements
  - New Java 5 modeling support
  - Better integration between conceptual and code modeling
- New and Enhanced transformations
  - New UML to Java 5
  - New Java to UML
  - New UML to Web Services Definition Language (WSDL) / XML Schema Definition (XSD)
- Enhanced SOA capabilities
  - Process advisor includes SOA guidance
  - UML Profile for Software Services included
  - Template for Services development modeling projects included
- Inclusion of all Rational Application Developer and Rational Software Modeler improvements
- IBM Rational Data Architect and RSx shell sharing — UML to logical data model transformation
- Inclusion of all Rational Application Developer and Rational Software Modeler improvements

**IBM Rational Data Architect** is an enterprise data modeling and integration design tool that helps data architects understand information infrastructure, map data assets to each other and create integration schemas.

New and Improved:

- Enhanced integrations
  - Eclipse 3.2
  - Rational Software Architect
  - IBM WebSphere Metadata Server
- Enhanced mapping features
  - New transformation: transform a Logical Data Model to a UML class model (as supported by Rational Software Modeler)
  - Logical to XML schema mapping
  - Logical to logical
  - Reporting for mapping models
- Expanded Relational Database Management System and OS support — MySQL, Red Hat 4, Novell SUSE Linux™ 10

**IBM Rational Data Architect V7.0** was announced on November 28, 2006. For more information, refer to [206-322](#), dated November 28, 2006.

**IBM Rational Professional Bundle** includes all the desktop tools your enterprise needs to design, construct and test J2EE, portal, and SOA applications on both Windows™ and Linux, as well as test .NET applications. Eight powerful software tools are included in this single package — with just one maintenance contract to manage. The bundle provides complete flexibility for individual practitioners who can install and use only the tool needed. This release of IBM Rational Professional Bundle includes IBM Rational Performance Tester V6.1.2. All other products are V7.0.

#### **Automated software quality**

---

**IBM Rational Functional Tester** is an automated functional and regression testing solution for QA teams concerned with the quality of their Java, .NET, and Web-based applications. Combining advanced test development techniques with the simplification and automation of basic test needs, IBM Rational Functional Tester accelerates the process of system test creation, execution and analysis to ensure the early capture and repair of application errors.

#### New and improved

- Extended environment support
  - Firefox
  - Support of .Net 2.0 datagrid control set
  - Citrix workbench host that enables record and playback on a Citrix server
- Enhanced ease-of-use features
  - Object map properties
  - Log view enhancements
- Process Advisor Adoption enabling real-time, context-sensitive, process guidance
- Support for IBM JRE 1.5 and Sun JRE 1.5
- Remote execution support that permits remote execution from TestManager or ClearQuest® V7.0

**New IBM Rational Functional Tester Extension** extends IBM Rational Functional Tester by providing automated functional and regression testing for SAP GUI applications. Functional Tester Extension provides QA teams with advanced test development techniques with the simplification and automation of basic test needs. Rational Functional Tester Extension accelerates the process of system test creation, execution and analysis to ensure early detection and repair of SAP GUI applications.

#### Key features

- Extend Rational Functional Tester providing record and playback of SAP GUI Client
- New features for Rational Functional Tester V7.0 that apply
- Mercury competitive trade-up is now available

**IBM Rational Functional Tester Extension for Siebel Test Automation** extends IBM Rational Functional Tester by providing automated functional and regression testing for Siebel applications. Combining advanced test development techniques with the simplification and automation of basic test needs, IBM Rational Functional Tester Extension for Siebel Test Automation accelerates the process of system test creation, execution and analysis to ensure the early capture and repair of application errors.

#### New and improved

- Updated features for Rational Functional Tester V7.0 as previously described apply
- Support for Siebel 7.8 applications
- Mercury competitive trade-up is now available

**IBM Rational Functional Tester Plus** is a functional and regression testing solution bundle that includes IBM Rational Functional Tester and IBM Rational Robot. It allows teams to test a wide variety of software applications, including Java, Web, Web services, .NET, and thick client technology-based applications.

#### New and improved

- Updated features for IBM Rational Functional Tester V7.0 that apply
- Mercury competitive trade-up is now available

**IBM Rational Robot** is a testing tool for QA teams who want to automate the functional and performance testing of applications based on a variety of client/server GUI technologies.

New and improved — Fixed term license now available

**IBM Rational Manual Tester** is a manual test authoring and execution tool that promotes test step reuse to reduce the impact of software change on testers and business analysts.

#### New and improved

- Extended platform support for Citrix

- Improved ease-of-use features
  - Undo/redo capabilities
  - TPTP 4.2 Log viewer
  - Ability to submit defects from Manual Tester
  - Improved editor

**IBM Rational ClearQuest and Functional Testing** is a comprehensive quality and change management bundle that offers testing teams an integrated solution for test management, defect management and automated and manual functional testing.

New and improved

- Improved ease of use
  - Enhanced copy past features
  - Rational Robot adapters
  - Defect submission
  - Tighter integration with manual tester
- Extended distributed development
  - Remote execution
  - Citrix support

**Note:** IBM Rational Performance Tester (RPT) and its extensions remain on the current code base, 6.1.0. For this release, we are enabling a fixed term license for RPT and additional competitive trade-ups to the product family. For a complete list of competitive trade-up options, visit

<http://www-306.ibm.com/software/rational/support/migrations/>

**IBM Rational Performance Tester** is a performance test creation, execution and analysis tool for teams validating the scalability and reliability of complex on demand applications before deployment.

New and improved — New fixed term license is now available.

**IBM Rational Performance Tester Extension for Siebel Test Automation** provides load and performance testing of Siebel 7.7 and 7.8 data types.

New and improved — Mercury/HP competitive trade-up is now available.

**IBM Rational Performance Tester Extension** provides load and performance testing of SAP Solutions.

New and improved — Mercury/HP competitive trade-up is now available.

**IBM Rational Performance Tester Extension for Citrix Presentation Server** is a load and performance testing solution that extends performance and scalability testing of IBM Rational Performance Tester to Citrix Presentation Server.

New and improved — Mercury/HP competitive trade-up is now available.

**Virtual Tester Packs:** IBM Rational Performance Tester verifies that an application will provide acceptable response times and functionality under multi-user loads. Multi-user loads are generated by virtual testers, low-memory work agents that generate user-like transactions. Rational offers customers the following agents in different sized packs to meet a variety of user loads: 100, 250, 500, 1,000, 1,500, 10,000, and 100,000.

New and improved — Mercury/HP competitive trade-up is now available.

#### **Additional product notes**

---

- IBM Rational Data and Application Modeling Bundle V7.0 conveniently packages IBM Rational Data Architect V7.0 and IBM Rational Software Modeler V7.0 into one offering. Users have the option of running each tool independently or installing and using them as part of a fully integrated environment. For more information, refer to [206-310](#), dated December 5, 2006.



- IBM Rational Elite Support for Eclipse provides world class technical support for Eclipse, the open source development environment from the Eclipse Foundation. IBM Rational Elite Support for Eclipse provides the support you need to confidently develop in the Eclipse environment. For more information, refer to [206-312](#), dated December 5, 2006.

### **Section 508 of the U.S. Rehabilitation Act**

IBM Rational Application Developer is capable, when used in accordance with IBM's associated documentation, of satisfying the applicable requirements of Section 508 of the Rehabilitation Act, provided that any assistive technology used with the product properly interoperates with it. A U.S. Section 508 Voluntary Product Accessibility Template (VPAT), containing details on the products accessibility compliance, can be requested at

[http://www.ibm.com/able/product\\_accessibility/index.html](http://www.ibm.com/able/product_accessibility/index.html)

### **IPLA and subscription and support considerations**

IPLA licenses can be transferred from one machine to another within, but not limited to an enterprise. You may aggregate the capacity for all the processors the product is operated on to achieve a more economic price. This will result in a single proof of entitlement (PoE). It is your responsibility to manage the distribution of Value Units within the limits of the entitlement of the product license.

Subscription and Support must cover the same capacity as the product license entitlement. Subscription and Support will be available in the country in which the agreement is made.

---

### **Statement of direction**

IBM plans to announce Web development enhancements for IBM Rational Web Developer in first quarter 2007.

IBM Rational has removed Enterprise Generation Language (EGL) functionality from IBM Rational Application Developer for WebSphere Software V7.0 and IBM Rational Software Architect V7.0. Equivalent functionality is intended to be announced as a new offering in first half 2007.

All statements regarding IBM's plans, directions, and intent are subject to change or withdrawal without notice.

### **Availability of national languages**

Product description	Language	GA date
Ratl Application Developer V7.0.0	Multilingual (English International, French, Russian, Korean, Chinese Simplified, Spanish, Portuguese-Brazilian, German, Japanese, Chinese Traditional, Hungarian, Czech, Italian, Polish)	December 22, 2006
Ratl CQ and Functional Test V7.0.0	English US	December 8, 2006
Ratl Func TestPlus V7.0.0	Multilingual (French, Korean, Chinese Simplified, Spanish, Portuguese-Brazilian, German, Japanese, Chinese Traditional, English U.S., Italian)	December 8, 2006
Ratl Functional Tester V7.0.0	Multilingual (French, Korean, Chinese Simplified, Spanish, Portuguese-Brazilian,	December 8, 2006

Ratl Manual Tester V7.0.0	German, Japanese, Chinese Traditional, English U.S., Italian) Multilingual (French, Korean, Chinese Simplified, Spanish, Portuguese-Brazilian, German, Japanese, Chinese Traditional, English U.S., Italian)	December 8, 2006
Ratl Performance Tester V6.1.0	Multilingual (French, Korean, Chinese Simplified, Spanish, Portuguese-Brazilian, German, Japanese, Chinese Traditional, English U.S., Italian)	May 20, 2005
Ratl Professional Bundle V7.0.0	Multilingual (English International, Portuguese, French, Korean, Chinese Simplified, Spanish, German, Japanese, Chinese Traditional, Italian)	December 22, 2006
Ratl Robot V7.0.0	English U.S.	June 12, 2006
Ratl Software Architect V7.0.0	Multilingual (English International, Portuguese, French, Korean, Chinese Simplified, Spanish, German, Japanese, Chinese Traditional, Italian)	December 22, 2006
Ratl Software Modeler V7.0.0	Multilingual (English International, Portuguese, French, Korean, Chinese Simplified, Spanish, German, Japanese, Chinese Traditional, Italian)	December 22, 2006
Ratl Systems Developer V7.0.0	Multilingual (English International, French, Korean, Chinese Simplified, Spanish, Portuguese-Brazilian, German, Japanese, Chinese Traditional, Italian)	December 22, 2006

## Trademarks

Rational, Passport Advantage, WebSphere, RUP, Rational Rose, and ClearQuest are registered trademarks of International Business Machines Corporation in the United States or other countries or both.

Windows is a trademark of Microsoft Corporation.

Java is a trademark of Sun Microsystems, Inc.

Linux is a trademark of Linus Torvalds in the United States, other countries or both.

Other company, product, and service names may be trademarks or service marks of others.

---

## Offering Information

---

Product information is available via the Offering Information Web site

<http://www.ibm.com/common/ssi>

Also, visit the Passport Advantage® Web site

<http://www.ibm.com/software/passportadvantage>

---

## Publications

---

No publications are shipped with these products.

The IBM Publications Center

<http://www.ibm.com/shop/publications/order>

The Publications Center is a worldwide central repository for IBM product publications and marketing material with a catalog of 70,000 items. Extensive search facilities are provided. Payment options for orders are via credit card (in the U.S.) or customer number for 20 countries. A large number of publications are available online in various file formats, and they can all be downloaded by all countries.

---

## Technical information

---

### **Specified operating environment**

---

#### **Hardware requirements: IBM Rational® Functional Tester Extension**

- Intel® Pentium® IV 1.4 GHz processor minimum is required
- Display, minimum requirements: 1024 x 768
- 1.0 GB RAM minimum and recommended
- Disk space requirements: 750 MB for install

Detailed hardware requirements, including descriptions of supported processors, recommended processor speeds, memory and disk space, for Rational products are available in the product installation guides and release notes.

Installation guides and release notes for Rational products are available on the IBM Publications Center at

<http://www.ibm.com/shop/publications/order>

Or

<http://www.ibm.com/software/rational/support>

#### **Software requirements: IBM Rational Analysis, Design and Construction products:**

- Microsoft™ Windows™ 2000 Professional (SP4)
- Microsoft Windows 2000 Server (SP4)
- Microsoft Windows 2000 Advanced Server (SP4)

- Microsoft Windows XP Professional (SP1 and SP2)
- Microsoft Windows XP Professional x64 Ed (AMD)
- Microsoft Windows Server 2003 Standard (SP1)
- Microsoft Window Server 2003 Enterprise (SP1)
- Red Hat Enterprise Linux™ Workstation Version 4.0
- Red Hat Enterprise Linux Desktop Version 4.0
- SUSE LINUX Enterprise Server Version 9

### **IBM Rational Functional Tester Extension**

Platform:

- Microsoft Windows XP Professional SP1 SP2
- Microsoft Windows 2000 Professional SP4
- Microsoft Windows 2000 Server SP4
- Microsoft Windows 2000 Advanced Server
- Microsoft Windows 2003 Enterprise SP1
- Microsoft Windows 2003 Standard SP1
- Microsoft Windows 2003 Server SP1
- Red Hat Linux Enterprise Workstation 4.0 (All functions except recording)
- SUSE Linux Professional version 9.0 (All functions except recording)
- SUSE Linux Enterprise Server 10.0 (All functions except recording)
- Novel Linux Desktop 10.0 (All functions except recording)

**.Net Framework:** .Net Framework 1.0, 1.1 or 2.0 is a mandatory requirement.

Detailed software requirements, including descriptions of supported operating systems, databases, and other application software requirements for Rational products are available in the product installation guides and release notes.

Installation guides and release notes for Rational products are available on the IBM Publications Center at

<http://www.ibm.com/shop/publications/order>

Or

<http://www.ibm.com/software/rational/support>

### **Planning information**

---

Software Maintenance is included with licenses purchased through Passport Advantage and Passport Advantage Express. Installation and technical support is provided by the Software Maintenance offering of the IBM International Passport Advantage Agreement. This fee service enhances your productivity, with voice and electronic access into IBM support organizations.

### **Packaging:**

#### **IBM Rational Software Architect Version 7.0**

- Quick Start CD
- Rational Software Architect
- Rational Agent Controller
- WebSphere® Portal test environments
- Rational ClearCase® LT

- Crystal Reports Server
- Activation Kit for Rational Software Architect
- Rational License Server
- IBM Installation Manager
- IBM Packaging Utility
- WebSphere Application Server for Developers
- CICS® Transaction Gateway

#### **IBM Rational Application Developer for WebSphere Software Version 7.0**

- Quick Start CD
- Rational Application Developer
- Rational Agent Controller
- WebSphere Portal test environments
- Rational ClearCase LT
- Crystal Reports Server
- Activation Kit for Rational Application Developer
- Rational License Server
- IBM Installation Manager
- IBM Packaging Utility
- WebSphere Application Server for Developers
- CICS Transaction Gateway

#### **IBM Rational Systems Developer Version 7.0**

- Quick Start CD
- Rational Systems Developer
- Rational ClearCase LT
- Activation Kit for Rational Systems Developer
- Rational License Server
- IBM Installation Manager
- IBM Packaging Utility

#### **IBM Rational Software Modeler Version 7.0**

- Quick Start CD
- Rational Software Modeler
- Rational ClearCase LT
- Activation Kit for Rational Software Modeler
- Rational License Server
- IBM Installation Manager
- IBM Packaging Utility

#### **IBM Rational Functional Tester Version 7.0**

- Quick Guide CD
- Activation Kit for Rational Functional Tester

- Activation Kit for Rational Manual Tester
- Rational Functional Tester
- Rational Manual Tester
- Rational ClearCase LT

**IBM Rational Manual Tester Version 7.0**

- Quick Guide CD
- Activation Kit for Rational Manual Tester
- Rational Manual Tester
- Rational ClearCase LT

**IBM Rational Functional Tester Plus Version 7.0**

- Activation Kit for Rational Functional Tester
- Activation Kit for Rational Manual Tester
- Rational Functional Tester
- Rational Robot
- Rational Test Manager
- Rational Test Agents
- Rational Test Enablers
- Rational License Server for Windows
- DB2® UBD V8.2
- Rational ClearCase LT

**IBM Rational ClearQuest® and Functional Testing Version 7.0**

- Activation Kit for Rational Functional Tester
- Activation Kit for Rational Manual Tester
- Rational Functional Tester
- Rational Robot
- Rational Test Manager
- Rational Test Agents
- Rational Test Enablers
- Rational License Server for Windows
- DB2 UBD V8.2
- Rational ClearCase LT
- Rational ClearQuest

**IBM Rational Professional Bundle Version 7.0**

This product offering includes the products listed below. Please refer to individual product packaging for details.

- Rational Software Architect
- Rational Software Modeler
- Rational Application Developer for WebSphere Software
- Rational Functional Tester

- Rational Manual Tester
- Rational Performance Tester
- Rational ClearCase LT

### Security, auditability, and control

---

The customer is responsible for evaluation, selection, and implementation of security features, administrative procedures, and appropriate controls in application systems and communication facilities.

---

## Software Services

---

IBM Software Services has the breadth, depth, and reach to manage your services needs. You can leverage the deep technical skills of our lab-based, software services team and the business consulting, project management, and infrastructure expertise of our IBM Global Services team. Also, we extend our IBM Software Services reach through IBM Business Partners to provide an unmatched portfolio of capabilities. Together, we provide the global reach, intellectual capital, industry insight, and technology leadership to support any critical business need.

To learn more about IBM Software Services or to contact a Software Services sales specialist, visit

<http://www.ibm.com/software/sw-services/>

To locate an IBM Business Partner, visit

<http://www.ibm.com/software/solutions/isv>

---

## Ordering information

---

This product is only available via Passport Advantage. It is not available as shrinkwrap.

### Product information

Licensed function title	Product group	Product category
IBM Rational Application Developer for WebSphere Software	Design and Construction	Design and Construction
IBM Rational ClearQuest and Functional Testing	Software Quality	Software Quality
IBM Rational Functional Tester	Software Quality	Software Quality
IBM Rational Functional Tester Extension	Software Quality	Software Quality
IBM Rational Functional Tester Extension for Siebel Test Automation	Software Quality	Software Quality
IBM Rational Functional Tester Plus	Software Quality	Software Quality
IBM Rational Manual Tester	Software Quality	Software Quality
IBM Rational Performance Test Pack Virtual Testers	Software Quality	Software Quality
IBM Rational Performance Tester	Software Quality	Software Quality
IBM Rational Performance Tester Extension	Software Quality	Software Quality
IBM Rational Performance Tester Extension for Citrix Presentation Server	Software Quality	Software Quality
IBM Rational Performance Tester Extension for SQL	Software Quality	Software Quality
IBM Rational Performance Tester Extension for Siebel Test Automation	Software Quality	Software Quality

Program name	PID number	Charge unit description
IBM Rational Professional Bundle	Design and Construction Software Quality	Design and Construction Software Quality
IBM Rational Robot	Design and Construction Software Quality	Design and Construction Software Quality
IBM Rational Software Architect	Design and Construction Software Quality	Design and Construction Software Quality
IBM Rational Software Modeler	Design and Construction Software Quality	Design and Construction Software Quality
IBM Rational Systems Developer	Design and Construction Software Quality	Design and Construction Software Quality
IBM Rational Application Developer for WebSphere Software	5724-J19	Floating User(s)
IBM Rational Application Developer for WebSphere Software	5724-J19	Authorized User(s)
IBM Rational ClearQuest and Functional Testing	5724-032	Authorized User(s)
IBM Rational ClearQuest and Functional Testing	5724-032	Floating User(s)
IBM Rational ClearQuest and Functional Testing	5724-032	Floating User(s)
IBM Rational ClearQuest and Functional Testing	5724-032	Authorized User(s)
IBM Rational Functional Tester	5724-G25	Authorized User(s)
IBM Rational Functional Tester	5724-G25	Floating User(s)
IBM Rational Functional Tester	5724-G25	Authorized User(s)
IBM Rational Functional Tester	5724-G25	Floating User(s)
IBM Rational Functional Tester Extension	5724-G25	Floating User(s)
IBM Rational Functional Tester Extension for Siebel Test Automation	5724-G25	Floating User(s)
IBM Rational Functional Tester Plus	5724-Q60	Authorized User(s)
IBM Rational Functional Tester Plus	5724-Q60	Floating User(s)
IBM Rational Functional Tester Plus	5724-Q60	Authorized User(s)
IBM Rational Functional Tester	5724-Q60	Floating User(s)
IBM Rational Manual Tester	5724-J29	Floating User(s)
IBM Rational Manual Tester	5724-J29	Authorized User(s)
IBM Rational Manual Tester	5724-J29	Floating User(s)
IBM Rational Manual Tester	5724-J29	Authorized User(s)
IBM Rational Performance Test Pack Virtual Testers	5724-G27	Virtual User(s)
IBM Rational Performance Tester	5724-J96	Authorized User(s)
IBM Rational Performance Tester	5724-J96	Floating User(s)
IBM Rational Performance Tester Extension	5724-J96	Floating User(s)
IBM Rational Performance Tester Extension for Citrix Presentation Server	5724-J96	Floating User(s)
IBM Rational Performance Tester Extension for SQL	5724-G24	Floating User(s)
IBM Rational Performance Tester Extension for Siebel Test Automation	5724-J96	Floating User(s)
IBM Rational Professional Bundle	5724-J13	Authorized User(s)
IBM Rational Professional Bundle	5724-J13	Floating User(s)
IBM Rational Robot	5724-G24	Floating User(s)
IBM Rational Robot	5724-G24	Authorized User(s)
IBM Rational Software Architect	5724-I70	Floating User(s)
IBM Rational Software Architect	5724-I70	Authorized User(s)



IBM Rational Software Modeler	5724-I69	Authorized User(s)
IBM Rational Software Modeler	5724-I69	Floating User(s)
IBM Rational Systems Developer	5724-M10	Floating User(s)
IBM Rational Systems Developer	5724-M10	Authorized User(s)

## Charge metrics definitions

### Authorized user

An authorized user is one and only one individual (named or unnamed) within or outside your enterprise. A PoE must be obtained for each individual user accessing the program in any manner. A program licensed under an authorized user PoE may be installed on a single computer or server, and accessed by multiple users, provided that a PoE has been obtained for each individual user accessing the program either directly or indirectly (via a multiplexing program, device, or application server) through any means on behalf of the user.

### Floating user

You may utilize the program, including installation of the program on multiple servers, provided that use of the program occurs via a license server, and the total number of concurrent users does not exceed the total number of floating user licenses obtained for the program.

### Passport Advantage program licenses

Description	Part number
Rational Application Developer	
IBM Rational Application Developer for WebSphere Software	
RAD Auth Usr from Competitive (List 1) Trdup Lic+SW Maint 12 Mo	D54N8LL
RAD Auth Usr from Competitive (List 2) Trdup Lic+SW Maint 12 Mo	D54N9LL
RAD Auth Usr from RoseXDE Dev Java™ Auth Usr Trdup Lic+SW Maint 12 Mo	D54N6LL
RAD Auth Usr from WSSD Usr or RWD Auth Usr Trdup Lic+SW Maint 12 Mo	D54N7LL
RAD Flt Usr from Competitive Trdup Lic+SW Maint 12 Mo	D54NZLL
RAD Flt Usr from RWD Flt Usr Trdup Lic+SW Maint 12 Mo	D54NELL
RAD Flt Usr from RoseXDE Dev Java Flt Usr Trdup Lic+SW Maint 12 Mo	D54NDLL
RAD Flt Usr from WSAD Usr or RAD Ath User Trdup Lic+SW Maint 12 Mo	D54NFLL
Ratl Application Dev for SW Auth User Initl 12 Mo FT Lic+SW Maint	D54SDLL
Ratl Application Dev for SW Auth User Subsq 12 Mo FT Lic+SW Maint	D54SELL
Ratl Application Dev for WebSphere SW Auth User Annual SW Maint Rnwl	E01MJLL
Ratl Application Dev for WebSphere SW Auth User Lic+SW Maint 12 Mo	D54N4LL
Ratl Application Dev for WebSphere SW AuthUsr SW Maint Reinstate 12 Mo	D54N5LL
Ratl Application Dev for WebSphere SW Flt User Annual SW Maint Rnwl	E01MKLL
Ratl Application Dev for WebSphere SW Flt User Lic+SW Maint 12 Mo	D54NBLL
Ratl Application Dev for WebSphere SW Flt Usr SW Maint Reinstate 12 Mo	D54NCLL
Rational Functional Tester	
IBM Rational Functional Tester Extension	
Ratl Functional Test Ext Fl User from Competitive TrdUp LIC+SW Maint 12 Mo	D59SRLL
Ratl Functional Tester Extension Floating User Annual SW Maint Rnwl	E0340LL
Ratl Functional Tester Extension Floating User LIC+SW Maint 12 Mo	D59RMLL

Ratl Functional Tester Extension  
SW Maint Reinstate 12 Mo D59RNLL

#### Rational Functional Tester

##### IBM Rational Functional Tester Extension for Siebel Test Automation

Ratl Func Test Ext Siebel FL D59STLL  
User from Competitive TrdUp LIC+SW Maint 12 Mo  
Ratl Functional Tester Ext for E01TGLL  
Siebel Annual SW Maint Rnwl  
Ratl Functional Tester Ext for D554HLL  
Siebel LIC+SW Maint 12 Mo  
Ratl Functional Tester Ext for D554ILL  
Siebel SW Maint Reinstate 12 Mo

#### Rational Functional Tester

##### IBM Rational Functional Tester

RATL FUNCTESTFLTUSR FROM RATL D53QTLL  
FUNCTEST ATHUS TRDUP LIC+SW Maint 12 Mo  
Ratl Functional Tester E0197LL  
Authorized User Annual SW Maint Rnwl  
Ratl Functional Tester D54SHLL  
Authorized User INITL 12MO FT LIC+SW Maint 12 Mo  
Ratl Functional Tester D53NFL  
Authorized User USER LIC+SW Maint 12 Mo  
Ratl Functional Tester D54SILL  
Authorized User SUBSQ 12Mo FT LIC+SW MNT  
Ratl Functional Tester D53NGLL  
Authorized User SW Maint Reinstate 12 Mo  
Ratl Functional Tester AuthUsr D53VNLL  
from Competitive TrdUp LIC+SW Maint 12 Mo  
Ratl Functional Tester FLTUSR D53VPLL  
from Competitive TrdUp LIC+SW Maint 12 Mo  
Ratl Functional Tester AUTUSR E01I4LL  
S390 Annual SW Maint Rnwl  
Ratl Functional Tester AUTUSR D54BSLL  
S390 LIC+SW Maint 12 Mo  
Ratl Functional Tester AUTUSR D54BTLL  
S390 SW Maint Reinstate 12 Mo  
Ratl FTstr Floating User License D530BLL  
SW Maintenance 12 Mont  
Ratl FTstr Floating User SW E012DLL  
Maintenance Annual Renewal  
Ratl FTstr Floating User SW D530CLL  
Maintenance Reinstatement 12 Mo

#### Rational Functional Tester Plus

##### IBM Rational Functional Tester Plus

Ratl Func Test Pls AuthUsr from D59RSLL  
Competitive TrdUp LIC+SW Maint 12 Mo  
Ratl Func Test Pls AuthUsr from D57NILL  
Robot/RFT Auth Usr TRDUP LIC+SW Maint 12 Mo  
Ratl Func Test Plus Ath Usr from D59RKLL  
Competitive TrdUp LIC+SW Maint 12 Mo  
Ratl Func Test Plus Flt User D59RQLL  
from Competitive TrdUp LIC+SW Maint 12 Mo  
Ratl Func Test Plus Flt Usr from D57N4LL  
Robot/RFT Flt Usr TRDUP LIC+SW Maint 12 Mo  
Ratl Functional Tester Plus Auth E02FWLL  
User Annual SW Maint Rnwl  
Ratl Functional Tester Plus Auth D57PILL  
User INITL 12MO FT LIC+SW MNT  
Ratl Functional Tester Plus Auth D57NBLL  
User LIC+SW Maint 12 Mo  
Ratl Functional Tester Plus Auth E02G4LL

User SUBSQ 12MO FT LIC+SW MNT	
Ratl Functional Tester Plus Auth	D57NHLL
User SW MAINT REINSTATE 12 MO	
Ratl Functional Tester Plus Auth	E02FXLL
User zSeries® Annual SW Maint Rnwl	
Ratl Functional Tester Plus Auth	D57NJLL
User Zseries LIC+SW Maint 12 Mo	
Ratl Functional Tester Plus Auth	D57NKLL
User Zseries SW Maint Reinstate 12 Mo	
Ratl Functional Tester Plus Flt	E02FULL
User Annual SW Maint Rnwl	
Ratl Functional Tester Plus Flt	D57N2LL
User LIC+SW Maint 12 Mo	
Ratl Functional Tester Plus Flt	D57N3LL
User SW Maint Reinstate 12 Mo	
Rtl Func Tst Pls AthUsr from	D57NNLL
Robot/RFT AthUsr ZSer TRDUP LIC+SW Maint 12 Mo	

Rational Performance Tester

IBM Rational Performance Tester	
Extension for Citrix	
Presentation Server	
Ratl Perf Test Ext Citrix Fl	D59TOLL
User from Competitive TrdUp LIC+SW Maint 12 Mo	
Ratl Perf Test Ext for Citrix	E02BVLL
Present Svr Float User Annual SW Maint Rnwl	
Ratl Perf Test Ext for Citrix	D56TXLL
Present Svr Float User Lic+SW Maint 12 Mo	
Ratl Perf Test Ext for Citrix	D56U3LL
Present Svr Float UsrSW Maint Reinstate 12 Mo	

Rational Performance Tester

IBM Rational Performance Tester	
Ratl Perf Test FL User From Ratl	D54MZLL
Perf Test AU User TrdUp LIC+SW Maint 12 Mo	
Ratl Performance Tester	E01M9LL
Authorized User Annual SW Maint Rnwl	
Ratl Performance Tester	D59RGLL
Authorized User Initl FT LIC+SwM 12 Mo	
Ratl Performance Tester	D54LRLL
Authorized User LIC+SW Maint 12 MO	
Ratl Performance Tester	D54LSLL
Authorized User SW Maint Reinstate 12 Mo	
Ratl Performance Tester	E033YLL
Authorized User SubSq FT LIC+SwM 12 Mo	
Ratl Performance Tester Floating	E01MALL
User Annual SW Maint Rnwl	
Ratl Performance Tester Floating	D54LTLL
User LIC+SW Maint 12 MO	
Ratl Performance Tester Floating	D54LULL
User SW Maint Reinstate 12 Mo	

Rational Performance Tester

IBM Rational Performance Tester Extension	
Ratl Performance Tester	E02BULL
Extension Annual SW Maint Rnwl	
Ratl Performance Tester	D56TBLL
Extension LIC+SW Maint 12 Mo	
Ratl Performance Tester	D56TCLL
Extension SW Maint Reinstate 12 Mo	
Ratl Perf Test Ext Fl User from	D59T1LL
Competitive TRDUP LIC+SW Maint 12 Mo	

Rational Performance Tester

IBM Rational Performance Tester Extension for Siebel Test Automation	
Ratl Perf Test Ext Siebel Fl User from Competitive TrdUp LIC+SW Maint 12 Mo	D59SSLL
Ratl Performance Tester Ext for Siebel Annual SW Maint Rnwl	E01TFLL
Ratl Performance Tester Ext for Siebel LIC+SW Maint 12 Mo	D554ELL
Ratl Performance Tester Ext for Siebel SW Maint Reinstate 12 Mo	D554FLL

Rational Professional Bundle

IBM Rational Professional Bundle	
Ratl Professional Bundle Authorized User INITL 12Mo FT LIC+SW MNT	D54S5LL
Ratl Professional Bundle Authorized User SUBSQ 12Mo FT LIC+SW MNT	D54S6LL
Ratl Prof Bundle FltUsr from Prof Bundle AthUsr Trdup Lic+SW Maint 12 Mo	D54MTLL
Ratl Prof Bundle AthUsr fr Functional Test AthUsr Trdup Lic+SW Maint 12 Mo	D54MVL
Ratl Prof Bundle AthUsr fr WSAD Usr or RAD AthUsr Trdup Lic+SW Maint 12 Mo	D54MWLL
Ratl Prof Bundle AthUsr from Competitive TrdUp Lic+SW Maint 12 Mo	D54PHLL
Ratl Prof Bundle AthUsr from SW Architect AthUsr Trdup Lic+SW Maint 12 Mo	D54MULL
Ratl Prof Bundle FltUsr fr Functional Test FltUsr Trdup Lic+SW Maint 12 Mo	D54MRL
Ratl Prof Bundle FltUsr from Competitive Trdup Lic+SW Maint 12 Mo	D54PGL
Ratl Prof Bundle FltUsr from RAD FltUsr Trdup Lic+SW Maint 12 Mo	D54MSLL
Ratl Prof Bundle FltUsr from SW Architect FltUsr Trdup Lic+SW Maint 12 Mo	D54MQLL
Ratl Professional Bundle Auth User SW Maintenance Reinstatement 12 Mo	D54KBLL
Ratl Professional Bundle Authorized User License SW Maintenance 12 Mo	D54KALL
Ratl Professional Bundle Authorized User SW Maintenance Annual Renewal	E01LRLL
Ratl Professional Bundle Float User SW Maintenance Reinstatement 12 Mo	D54KELL
Ratl Professional Bundle Floating User License SW Maintenance 12 Mo	D54KDLL
Ratl Professional Bundle Floating User SW Maintenance Annual Renewal	E01LSLL

Rational Robot

IBM Rational Robot	
RATL Robot Authorized User Initl FT LIC+SW Maint 12 Mo	D59RPLL
RATL Robot Authorized User SubSq FT LIC+SW Maint 12 Mo	E0341LL
Ratl Robot Auth User from Competitive TrdUp LIC+SW Maint 12 Mo	D53VVLL
Ratl Robot Authorized User Annual SW Maint Rnwl	E0196LL
Ratl Robot Authorized User LIC+SW Maint 12 MO	D53NDLL
Ratl Robot Authorized User SW Maint Reinstate 12 MO	D53NELL
Ratl Robot Floating User Annual SW Maint Rnwl	E0121LL
Ratl Robot Floating User LIC+SW Maint 12 Mo	D52ZFLL
Ratl Robot Floating User SW	D52ZGLL

Maint Reinstate 12 Mo	
Ratl Robot Flt User From Ratl	D53QSLl
Robot Auth User Trdup LIC+SW Maint 12 Mo	
Ratl Robot Flt Usr from	D53VWLL
Competitive TrdUp LIC+SW Maint 12 Mo	

#### Rational Robot

IBM Rational Robot Extension for SQL	
Ratl Robot Ext SQL Floating	D530GLL
User(s) License SW Maintenance 12 Months	
Ratl Robot Ext SQL Floating	E012GLL
User(s) SW Maintenance Annual Renewal	
Ratl Robot Ext SQL Floating	D530HLL
User(s) SW Maintenance	
Reinstatement 12 Months	

#### Rational Systems Developer

IBM Rational Systems Developer	
Ratl Sys Developer AthUsr from	D555HLL
RSM AthUsr TRDUP LIC+SW Maint 12 Mo	
Ratl Sys Developer AthUsr from	D555ILL
Rose XDE® Mod AthUsr TRDUP LIC+SW Maint 12 Mo	
Ratl Sys Developer FltUsr from	D555DLL
RSM FltUsr TRDUP LIC+SW Maint 12 Mo	
Ratl Sys Developer FltUsr from	D555ELL
Rose XDE Mod FltUsr TRDUP LIC+SW Maint 12 Mo	
Ratl Systems Developer AuthUser	D57E7LL
from Competitive Product Lic SW Mnt 12 Mo	
Ratl Systems Developer	E01TRLL
Authorized User Annual SW Maint Rnwl	
Ratl Systems Developer	D555LLL
Authorized User INITL 12Mo FT LIC+SW MNT	
Ratl Systems Developer	D555FLL
Authorized User LIC+SW Maint 12 Mo	
Ratl Systems Developer	E01TSLl
Authorized User SUBSQ 12Mo FT LIC+SW MNT	
Ratl Systems Developer	D555GLL
Authorized User SW Maint Reinstate 12 Mo	
Ratl Systems Developer Floating	E01TQLL
User Annual SW Maint Rnwl	
Ratl Systems Developer Floating	D555BLL
User LIC+SW Maint 12 Mo	
Ratl Systems Developer Floating	D555CLL
User SW Maint Reinstate 12 Mo	
Ratl Systems Developer FltUsr	D57E5LL
from Competitive Product Lic SW Mnt 12 Mo	
Ratl Systems Developer FltgUser	D57E6LL
from Auth User Lic SW Maintenance 12 Mont	

#### Rational ClearQuest and Functional Testing

IBM Rational ClearQuest and Functional Testing	
Ratl CQ Func Test Flt UsrFrom	D589MLL
Robot/RFT Flt Usr TrdUp Lic+SW Maint 12 Mo	
Ratl CQ Func Test Au Usr From	D589XLL
Robot/RFT Au Usr Trdup Lic+SW Maint 12 Mo	
Ratl CQ Func Tst AuUsr From	D586ELL
Robot/RFT Au Usr zSer Trdup Lic+SW Maint 12 Mo	
Ratl CQ Functional Test Auth	D58AOLL
User Initl 12Mo FT Lic+SW Mnt	
Ratl CQ Functional Testing Auth	E021WLL
User Annual SW Maint Rnwl	
Ratl CQ Functional Testing Auth	D589VLL
User Lic+SW Maint 12 Mo	
Ratl CQ Functional Testing Auth	D589WLL
User SW Maint Reinstate 12 Mo	

Ratl CQ Functional Testing Auth User Subsq 12Mo FT Lic+SW Mnt	E02I XLL
Ratl CQ Functional Testing Auth Usr zSeries Annual SW Maint Rnwl	E02I 8LL
Ratl CQ Functional Testing Auth Usr zSeries Lic+SW Maint 12 Mo	D586ALL
Ratl CQ Functional Testing Auth Usr zSeries SW Maint Reinstate 12 Mo	D586BLL
Ratl CQ Functional Testing Flt Usr Annual SW Maint Rnwl	E02I TLL
Ratl CQ Functional Testing Flt Usr Lic+SW Maint 12 Mo	D589ALL
Ratl CQ Functional Testing Flt Usr SW Maint Reinstate 12 Mo	D589FLL
Rtl CQ Func Tst AthUsr frm Competitive AthUsr zSer TrdUp Lic+SW Maint 12Mo	D586JLL
Rtl CQ Func Tst Auth Usr from Competitive Auth Usr TrdUp Lic+SW Maint 12 Mo	D589YLL
Rtl CQ Func Tst Flt Usr from Competitive Flt Usr TrdUp Lic+SW Maint 12 Mo	D589NLL

#### Rational Manual Tester

IBM Rational Manual Tester	
Ratl Manual Tester Authorized User INITL 12Mo FT LIC+SW MNT	D54SFLL
Ratl Manual Tester Authorized User SUBSQ 12Mo FT LIC+SW MNT	D54SGLL
Ratl ManTest FltUsr from ManTest AthUsr License SW Maintenance 12 Mo	D54MFLL
Ratl Manual Tester Authorized User License SW Maintenance 12 Mo	D54MXLL
Ratl Manual Tester Authorized User SW Maintenance Annual Renewal	E01MHLL
Ratl Manual Tester Authorized User SW Maintenance Reinstatement 12 Mo	D54MYLL
Ratl Manual Tester Floating User License SW Maintenance 12 Mo	D54MDLL
Ratl Manual Tester Floating User SW Maintenance Annual Renewal	E01MGLL
Ratl Manual Tester Floating User SW Maintenance Reinstatement 12 Mo	D54MELL

#### Rational Performance Test Pack-Virtual Test

IBM Rational Performance Test Pack Virtual Testers	
Ratl Perf Test Pak 100 VT Fl User from Competitive TrdUp LIC+SW Maint 12 Mo	D59SWLL
Ratl Perf Test Pak 100 Virt Testrs FloatUsr Annual SW Maint Rnwl	E012JLL
Ratl Perf Test Pak 100 Virt Testrs FloatUsr LIC+SW Maint 12 Mo	D530MLL
Ratl Perf Test Pak 100 Virt Testrs FloatUsr Term LIC+SW Maint 12 Mo	D53DRLL
Ratl Perf Test Pak 100K VT FL Usr from Competitive TRDUP LIC+SW Maint 12 Mo	D59T3LL
Ratl Perf Test Pak 100K Virt Testrs FloatUsr Annual SW Maint Rnwl	E012QLL
Ratl Perf Test Pak 100K Virt Testrs FloatUsr LIC+SW Maint 12 Mo	D530ZLL
Ratl Perf Test Pak 100K Virt Testrs FloatUsr SW Maint Reinstate 12 Mo	D5310LL
Ratl Perf Test Pak 100K Virt Testrs FloatUsr SW Maint Reinstate 12 Mo	D530NLL
Ratl Perf Test Pak 100K Virt Testrs FloatUsr Term LIC+SW Maint 12 Mo	D53D1LL
Ratl Perf Test Pak 10K VT Fl User from Competitive TrdUp LIC+SW Maint 12 Mo	D59T6LL
Ratl Perf Test Pak 10K Virt	E012KLL

Testrs FloatUsr Annual SW Maint Rnwl	
Ratl Perf Test Pak 10K Virt	D530PLL
Testrs FloatUsr LIC+SW Maint 12 Mo	
Ratl Perf Test Pak 10K Virt	D530QLL
Testrs FloatUsr SW Maint Reinstate 12 Mo	
Ratl Perf Test Pak 10K Virt	D53CYLL
Testrs FloatUsr Term LIC+SW Maint 12 Mo	
Ratl Perf Test Pak 1K VT FL User	D59SZLL
from Competitive TrdUp LIC+SW Maint 12 Mo	
Ratl Perf Test Pak 1K Virt	E012LLL
Testrs FloatUsr Annual SW Maint Rnwl	
Ratl Perf Test Pak 1K Virt	D53ORLL
Testrs FloatUsr LIC+SW Maint 12 Mo	
Ratl Perf Test Pak 1K Virt	D53OSLL
Testrs FloatUsr SW Maint Reinstate 12 Mo	
Ratl Perf Test Pak 1K Virt	D53DWLL
Testrs FloatUsr Term LIC+SW Maint 12 Mo	
Ratl Perf Test Pak 2.5 VT FL	D59SXLL
User from Competitive TrdUp LIC+SW Maint 12 Mo	
Ratl Perf Test Pak 2.5K Virt	E012NLL
Testrs FloatUsr Annual SW Maint Rnwl	
Ratl Perf Test Pak 2.5K Virt	D530TLL
Testrs FloatUsr LIC+SW Maint 12 Mo	
Ratl Perf Test Pak 2.5K Virt	D53OWLL
Testrs FloatUsr SW Maint Reinstate 12 Mo	
Ratl Perf Test Pak 2.5K Virt	D53DXLL
Testrs FloatUsr Term LIC+SW Maint 12 Mo	
Ratl Perf Test Pak 20K VT FL	D59T4LL
User from Competitive TrdUp LIC+SW MAINT 12 Mo	
Ratl Perf Test Pak 20K Virt	E012MLL
Testrs FloatUsr Annual SW Maint Rnwl	
Ratl Perf Test Pak 20K Virt	D530ULL
Testrs FloatUsr LIC+SW Maint 12 Mo	
Ratl Perf Test Pak 20K Virt	D530VLL
Testrs FloatUsr SW Maint Reinstate 12 Mo	
Ratl Perf Test Pak 20K Virt	D53CZLL
Testrs FloatUsr Term LIC+SW Maint 12 Mo	
Ratl Perf Test Pak 250 VT FL	D59SULL
User from Competitive TrdUp LIC+SW Maint 12 Mo	
Ratl Perf Test Pak 250 Virt	E012ELL
Testrs FloatUsr Annual SW Maint Rnwl	
Ratl Perf Test Pak 250 Virt	D530ALL
Testrs FloatUsr LIC+SW Maint 12 Mo	
Ratl Perf Test Pak 250 Virt	D530DLL
Testrs FloatUsr SW Maint Reinstate 12 Mo	
Ratl Perf Test Pak 5 VT FL User	D59SVLL
from Competitive TrdUp LIC+SW Maint 12 Mo	
Ratl Perf Test Pak 5 Virt Testrs	E012ILL
FloatUsr Annual SW Maint Rnwl	
Ratl Perf Test Pak 5 Virt Testrs	D530JLL
FloatUsr LIC+SW Maint 12 Mo	
Ratl Perf Test Pak 5 Virt Testrs	D530KLL
FloatUsr SW Maint Reinstate 12 Mo	
Ratl Perf Test Pak 50 VT FL User	D59T2LL
from Competitive TrdUp LIC+SW Maint 12 Mo	
Ratl Perf Test Pak 50 Virt	E01MYLL
Testrs FloatUsr Annual SW Maint Rnwl	
Ratl Perf Test Pak 50 Virt	D54Q1LL
Testrs FloatUsr LIC+SW Maint 12 Mo	
Ratl Perf Test Pak 50 Virt	D54Q2LL
Testrs FloatUsr SW Maint Reinstate 12 Mo	
Ratl Perf Test Pak 500 VT FL	D59SYLL
User from Competitive TrdUp LIC+SW Maint 12 Mo	
Ratl Perf Test Pak 500 Virt	E012HLL
Testrs FloatUsr Annual SW Maint Rnwl	
Ratl Perf Test Pak 500 Virt	D530ILL
Testrs FloatUsr LIC+SW Maint 12 Mo	
Ratl Perf Test Pak 500 Virt	D530LLL
Testrs FloatUsr SW Maint Reinstate 12 Mo	
Ratl Perf Test Pak 50K VT FL	D59T5LL
User from Competitive TrdUp LIC+SW Maint 12 Mo	
Ratl Perf Test Pak 50K Virt	E012PLL
Testrs FloatUsr Annual SW Maint Rnwl	
Ratl Perf Test Pak 50K Virt	D530XLL

Testrs FloatUsr LIC+SW Maint 12 Mo	
Ratl Perf Test Pak 50K Virt	D530YLL
Testrs FloatUsr SW Maint Reinstate 12 Mo	
Ratl Perf Test Pak 5K VT Fl User	D59T7LL
from Competitive TrdUp LIC+SW Maint 12 Mo	
Ratl Perf Test Pak 5K Virt	E012RLL
Testrs FloatUsr Annual SW Maint Rnwl	
Ratl Perf Test Pak 5K Virt	D5311LL
Testrs FloatUsr LIC+SW Maint 12 Mo	
Ratl Perf Test Pak 5K Virt	D5312LL
Testrs FloatUsr SW Maint Reinstate 12 Mo	

Rational Software Architect

IBM Rational Software Architect	
Ratl SW Arch AU fr RsXDEJv AU	D54MMLL
w/Compttiv IDE Usr Trdup Lic+SW Maint 12 Mo	
Ratl SW Arch AU fr RsXDEPl AU	D54MNULL
w/Compttiv IDE Usr Trdup Lic+SW Maint 12 Mo	
Ratl SW Arch FL fr RsXDEJv FL	D54MILL
w/Compttiv IDE Usr Trdup Lic+SW Maint 12 Mo	
Ratl SW Arch FL fr RsXDEPl FL	D54MJLL
w/Compttiv IDE Usr Trdup Lic+SW Maint 12 Mo	
Ratl SW Architect AU fr Rose XDE	D54LLLL
Java/Rose Java AU Trdup Lic+SW Maint 12 Mo	
Ratl SW Architect AU fr Rose XDE	D54LKLL
Modl/Rose Modl AU Trdup Lic+SW Maint 12 Mo	
Ratl SW Architect AU fr Rose XDE	D54LMLL
Plus/Rose Ent AU Trdup Lic+SW Maint 12 Mo	
Ratl SW Architect AU fr Rose XDE	D54LNLL
VS/Rose VS AU Trdup Lic+SW Maint 12 Mo	
Ratl SW Architect AthUsr fr WSAD	D54MLLL
Usr or RAD AthUsr Trdup Lic+SW Maint 12 Mo	
Ratl SW Architect Auth User from	D54LPLL
Competitive TrdUp Lic+SW Maint 12 Mo	
Ratl SW Architect FL fr Rose XDE	D54LDLL
Java/Rose Java FL Trdup Lic+SW Maint 12 Mo	
Ratl SW Architect FL fr Rose XDE	D54LCLL
Modl/Rose Modl FL Trdup Lic+SW Maint 12 Mo	
Ratl SW Architect FL fr Rose XDE	D54LELL
Plus/Rose Ent FL Trdup Lic+SW Maint 12 Mo	
Ratl SW Architect FL fr Rose XDE	D54LFLL
VS/Rose VS FL Trdup Lic+SW Maint 12 Mo	
Ratl SW Architect FltUsr from	D54LGLL
Competitive TrdUp Lic+SW Maint 12 Mo	
Ratl SW Architect FltUsr from	D54MHLL
RAD FltUsr Trdup Lic+SW Maint 12 Mo	
Ratl SW Architect FltUsr from SW	D54MKLL
Architect AthUsr Trdup Lic+SW Maint 12 Mo	
Ratl Software Architect	D54S7LL
Authorized User(s) Initl 12 Mo FT Lic+SW Maint	
Ratl Software Architect	D54LILL
Authorized User(s) License SW Maintenance 12 Mo	
Ratl Software Architect	E01M8LL
Authorized User(s) SW Maintenance Annual Renewal	
Ratl Software Architect	D54LJLL
Authorized User(s) SW Maintenance Reinstatement 12	
Ratl Software Architect	D54S8LL
Authorized User(s) Subsq 12 Mo FT Lic+SW Maint	
Ratl Software Architect Floating	D54LALL
User License SW Maintenance 12 Mo	
Ratl Software Architect Floating	D54LBLL
User SW Maintenance Reinstatement 12 Mo	
Ratl Software Architect Floating	E01M7LL
User(s) SW Maintenance Annual Renewal	

Rational Software Modeler

IBM Rational Software Modeler



Ratl Software Modeler Authorized User INITL 12Mo FT LIC+SW MNT	D54S9LL
Ratl Software Modeler Authorized User SUBSQ 12Mo FT LIC+SW MNT	D54SALL
Ratl SW Modeler AthUsr from Competitive TrdUp Lic+SW Maint 12 Mo	D54NVLL
Ratl SW Modeler FltUsr from Competitive TrdUp Lic+SW Maint 12 Mo	D54NTLL
Ratl SW Modeler FltUsr from SW Modeler AthUsr Trdup Lic+SW Maint 12 Mo	D54MPLL
Ratl Software Modeler Authorized User License SW Maintenance 12 Mo	D54L7LL
Ratl Software Modeler Authorized User SW Maintenance Reinstatement 12 Mo	D54L8LL
Ratl Software Modeler Authorized User(s) SW Maintenance Annual Renewal	E01M6LL
Ratl Software Modeler Floating User License SW Maintenance 12 Mo	D54L4LL
Ratl Software Modeler Floating User SW Maintenance Reinstatement 12 Mo	D54L5LL
Ratl Software Modeler Floating User(s) SW Maintenance Annual Renewal	E01M5LL

### Passport Advantage supply

Program name/description	Part number
Ratl Application Developer V7.0.0	
Rational Application Developer Windows Linux V7.0 Media PK Multilingual	BT03LML
Ratl CQ and Functional Test V7.0.0	
Ratl CQ and Functional Test Windows 2000, SUSE Linux, Windows XP, Windows Ser	BT03ENA
Ratl Func TestPlus V7.0.0	
Ratl Func TestPlus Windows 2000, SUSE Linux, Windows XP, Windows Server 2003,	BT03FNA
Ratl Functional Tester V7.0.0	
Ratl Functional Tester Windows 2000, Intel other, SUSE Linux, Windows XP, Wind	BT03GML
Ratl Manual Tester V7.0.0	
Ratl Manual Tester Windows 2000, SUSE Linux, Windows XP, Windows Server 2003	BT03HML
Ratl Performance Tester V6.1.0	
Ratl Performance Tester Windows 2000, Windows XP, Windows Server 2003 V6.1.0	BT01NML
Ratl Professional Bundle V7.0.0	
Ratl Professional Bundle Windows 2000, SUSE Linux, Windows XP, Windows Server	BT03KML
Ratl Robot V7.0.0	
Ratl Robot Windows 2000, Windows XP, Windows Server 2003, Other V7.0.0 Non-Cr	BT02FNA
Ratl Software Architect V7.0.0	
Ratl Software Architect V7.0 Multiplatform Media Pk Multilingual	BT03MML
Ratl Software Modeler V7.0.0	
Rational Software Modeler V7.0 Multilingual Multiplatform Media Pack	BT035ML
Ratl Systems Developer V7.0.0	
Rational Systems Developer V7.0 Multilingual Multiplatform Media Pack	BT037ML

### Passport Advantage customer: Media pack entitlement details

Customers with active maintenance or subscription for the products listed are entitled to receive the corresponding media pack.

Entitled maintenance offerings description	Media packs description	Part number
Ratl Performance Tester V6.1.0		

Rational Performance Tester Authorized User	Ratl Performance Tester Windows 2000, Windows XP, Windows Server 2003 V6.1.0	BT01NML
Rational Performance Tester Extension Floating User	Ratl Performance Tester Windows 2000, Windows XP, Windows Server 2003 V6.1.0	BT01NML
Rational Performance Tester Floating User	Ratl Performance Tester Windows 2000, Windows XP, Windows Server 2003 V6.1.0	BT01NML
Ratl Perf Test Ext Citrix Presentation Server Floating User	Ratl Performance Tester Windows 2000, Windows XP, Windows Server 2003 V6.1.0	BT01NML

Ratl Professional Bundle V7.0.0

Rational Professional Bundle Authorized User	Ratl Professional Bundle Windows 2000, SUSE Linux, Windows XP, Windows Server	BT03KML
Rational Professional Bundle Floating User	Ratl Professional Bundle Windows 2000, SUSE Linux, Windows XP, Windows Server	BT03KML

Ratl Manual Tester V7.0.0

IBM Rational Manual Tester Floating User	Ratl Manual Tester Windows 2000, SUSE Linux, Windows XP, Windows Server 2003,	BT03HML
Ratl Manual Tester Authorized User	Ratl Manual Tester Windows 2000, SUSE Linux, Windows XP, Windows Server 2003,	BT03HML

Ratl Software Modeler V7.0.0

IBM Rational Software Modeler Authorized User	Rational Software Modeler V7.0 Multilingual Multiplatform Media Pack	BT035ML
IBM Rational Software Modeler Floating User	Rational Software Modeler V7.0 Multilingual Multiplatform Media Pack	BT035ML

Ratl Systems Developer V7.0.0

Rational Systems Developer Authorized User	Rational Systems Developer V7.0 Multilingual Multiplatform Media Pack	BT037ML
Rational Systems Developer Floating User	Rational Systems Developer V7.0 Multilingual Multiplatform Media Pack	BT037ML

Ratl Robot V7.0.0

Rational Robot Authorized User	Ratl Robot Windows 2000, Windows XP, Windows Server 2003, Other V7.0.0 Non-Cr	BT02FNA
--------------------------------	---	---------

Rational Robot Extension for SQL Floating User	Ratl Robot Windows 2000, Windows XP, Windows Server 2003, Other V7.0.0 Non-Cr	BT02FNA
Ratl Robot FloatUsr	Ratl Robot Windows 2000, Windows XP, Windows Server 2003, Other V7.0.0 Non-Cr	BT02FNA
Ratl Software Architect V7.0.0		
IBM Rational Software Architect Authorized User	Ratl Software Architect V7.0 Multiplatform Media Pk Multilingual	BT03MML
IBM Rational Software Architect Floating User	Ratl Software Architect V7.0 Multiplatform Media Pk Multilingual	BT03MML
Ratl Func TestPlus V7.0.0		
IBM Rational Functional Tester Plus Authorized User	Ratl Func TestPlus Windows 2000, SUSE Linux, Windows XP, Windows Server 2003	BT03FNA
IBM Rational Functional Tester Plus Authorized User Zseries	Ratl Func TestPlus Windows 2000, SUSE Linux, Windows XP, Windows Server 2003	BT03FNA
IBM Rational Functional Tester Plus Floating User	Ratl Func TestPlus Windows 2000, SUSE Linux, Windows XP, Windows Server 2003	BT03FNA
IBM Rational Functional Tester Plus Floating User zSeries	Ratl Func TestPlus Windows 2000, SUSE Linux, Windows XP, Windows Server 2003	BT03FNA
Ratl Functional Tester V7.0.0		
Rational Functional Tester Authorized User	Ratl Functional Tester Windows 2000, Intel other, SUSE Linux, Windows XP, Wind	BT03GML
Rational Functional Tester Authorized User S/390®	Ratl Functional Tester Windows 2000, Intel other, SUSE Linux, Windows XP, Wind	BT03GML
Rational Functional Tester Floating User	Ratl Functional Tester Windows 2000, Intel other, SUSE Linux, Windows XP, Wind	BT03GML
Rational Functional Tester Floating User S/390	Ratl Functional Tester Windows 2000, Intel other, SUSE Linux, Windows XP, Wind	BT03GML
Ratl Application Developer V7.0.0		
IBM Rational Applicatn Developer for WebSphere Authorizd Usr	Rational Application Developer Windows Linux V7.0 Media PK Multilingual	BT03LML
IBM Rational Applicatn Developer for WebSphere Floating User	Rational Application Developer Windows Linux V7.0 Media PK Multilingual	BT03LML
Ratl CQ and Functional Test V7.0.0		

Ratl ClearQuest Functional Testing Authorized User	Ratl CQ and Functional Test Windows 2000, SUSE Linux, Windows XP, Windows Ser	BT03ENA
Ratl ClearQuest Functional Testing Authorized User zSeries	Ratl CQ and Functional Test Windows 2000, SUSE Linux, Windows XP, Windows Ser	BT03ENA
Ratl ClearQuest Functional Testing Floating User	Ratl CQ and Functional Test Windows 2000, SUSE Linux, Windows XP, Windows Ser	BT03ENA
Ratl ClearQuest Functional Testing Floating User zSeries	Ratl CQ and Functional Test Windows 2000, SUSE Linux, Windows XP, Windows Ser	BT03ENA

### **Cross-platform product for use on zSeries**

Order the part numbers that follow when there is an intention to acquire this cross-platform product for deployment on the zSeries or S/390 platform. This set of part numbers provides the identical supply and authorization as the other set in this announcement. The distinction is to identify the planned deployment platform.

Program name/description	Part number
RATL FUNCTNAL TESTER FLTUSR S390 ANNUAL SW MAINT RNWL	E0115LL
RATL FUNCTNAL TESTER FLTUSR S390 LIC+SW MAINT 12 MO	D54BULL
RATL FUNCTNAL TESTER FLTUSR S390 SW MAINT REINSTATE 12 MO	D54BVLL
Ratl CQ FuncTest FltUsr From Robot/RFT FltUsr zSer TrdUp Lic+SW Maint 12 Mo	D5895LL
Ratl CQ Functional Testing Flt Usr zSeries Annual SW Maint Rnwl	E021SLL
Ratl CQ Functional Testing Flt Usr zSeries License SW Maintenance 12 MO	D5893LL
Ratl CQ Functional Testing Flt Usr zSeries SW Maint Reinstate 12 Mo	D5894LL
Ratl Func Test Plus FltUsr from Competitive zSer TRDUP LIC+SW MAINT 12 MO	D59RRL
Ratl Functional Tester Plus Flt User Zseries ANNUAL SW MAINT RNWL	E02FVLL
Ratl Functional Tester Plus Flt User Zseries LIC+SW MAINT 12 MO	D57N7LL
Ratl Functional Tester Plus Flt User Zseries SW MAINT REINSTATE 12 MO	D57N9LL
Rtl CQ Func Tst Flt Usr frm Competitive Flt Usr zSr TrdUp Lic+SW Maint 12Mo	D5896LL
Rtl Func Tst Pls FltUsr from Robot/RFT FltUsr ZSer TRDUP LIC+SW MAINT 12 MO	D57NALL

### **Terms and conditions**

The information provided in this announcement letter is for reference and convenience purposes only. The terms and conditions that govern any transaction with IBM are contained in the applicable contract documents such as the IBM International Program License Agreement, IBM International Passport Advantage Agreement and the IBM Agreement for Acquisition of Software Maintenance.

**Licensing:** IBM International Program License Agreement including the License Information (LI) document and PoE govern your use of the program. PoEs are required for all authorized use.

Part number products only, offered outside of Passport Advantage, where applicable, are license only and do not include Software Maintenance.

This software license includes Software Maintenance, previously referred to as Software Subscription and Technical Support.

### **LI form numbers**

Program name	Program number	Form number
Rational Application Developer	5724-J19	L-KHUY-6TYMMB
Rational Functional Tester	5724-G25	L-KHUY-6TYMUK
Rational Functional Tester Plus	5724-Q60	L-KHUY-6TYMUK L-KHUY-6K2PB7
Rational Performance Tester	5724-J96	L-KHUY-6TYMM8
Rational Professional Bundle	5724-J13	See Note
Rational Robot	5724-G24	L-KHUY-6K2PB7
Rational Systems Developer	5724-M10	L-KHUY-6TYMRW
Ratl ClearQuest and Functional Testing	5724-032	L-KHUY-6TYMUK L-KHUY-6K2PB7 L-KHUY-6KUH93
Ratl Manual Tester	5724-J29	L-KHUY-6TYMVF
Ratl Performance Test Pack-Virtual Test	5724-G27	L-GATT-5NDNTP
Ratl Software Architect	5724-I70	L-KHUY-6TYMQU
Ratl Software Modeler	5724-I69	L-KHUY-6TYMT3

The Program's LI will be available for review on the IBM Software License Agreement Web site

<http://www.ibm.com/software/sla/sladb.nsf>

**Limited warranty applies:** Yes

**Warranty:** IBM warrants that when the program is used in the specified operating environment it will conform to its specifications. The warranty applies only to the unmodified portion of the program. IBM does not warrant uninterrupted or error-free operation of the Program or that IBM will correct all Program defects. You are responsible for the results obtained from the use of the program.

IBM provides you with access to IBM databases containing information on known program defects, defect corrections, restrictions, and bypasses at no additional charge. Consult the IBM Software Support Guide for further information at

<http://www.ibm.com/software/support>

IBM will maintain this information for at least one year after the original licensee acquires the program ("Warranty Period").

**Program technical support:** Technical support of a program product will be available for a minimum of three years from the general availability date, as long as your Software Maintenance is in effect. This technical support allows you to obtain assistance (via telephone or electronic means) from IBM for product-specific, task-oriented questions regarding the installation and operation of the program product. Software Maintenance also provides you with access to updates, releases, and versions of the program. You will be notified, via announcement letter, of discontinuance of support with 12 months' notice. If you require additional technical support from IBM, including an extension of support beyond the discontinuance date, contact your IBM representative or IBM Business Partner. This extension may be available for a fee.

**Money-back guarantee:** If for any reason you are dissatisfied with the program and you are the original licensee, return it within 30 days from the invoice date, to the party (either IBM or its reseller) from whom you acquired it, for a refund.

For programs acquired under the IBM International Passport Advantage Agreement, this term applies only to your first acquisition of the program.

**Copy and use on home/portable computer:** Yes

**Passport Advantage applies:** Yes, and through the Passport Advantage Web site at

<http://www.ibm.com/software/passportadvantage>

This product is only available via Passport Advantage. It is not available as shrinkwrap.

**Agreement for Acquisition of Software Maintenance:** The IBM Agreement for Acquisition of Software Maintenance (Z125-6011) applies for maintenance and does not require customer signatures.

Yes

Software Maintenance is included with licenses purchased through Passport Advantage and Passport Advantage Express. Product upgrades and Technical Support are provided by the Software Maintenance offering as described in the Agreements. Product upgrades provide the latest versions and releases to entitled software and Technical Support provides voice and electronic access to IBM support organizations, worldwide.

IBM includes one year of Software Maintenance with each program license acquired. The initial period of Software Maintenance can be extended by the purchase of a renewal option, if available.

While your Software Maintenance is in effect, IBM provides you assistance for your routine, short duration installation and usage (how-to) questions, and code-related questions. IBM provides assistance via telephone and, if available, electronic access, to your information systems (IS) technical support personnel during the normal business hours (published prime shift hours) of your IBM support center. (This assistance is not available to your end users.) IBM provides Severity 1 assistance 24 hours a day, 7 days a week. For additional details, consult your IBM Software Support Guide at

<http://techsupport.services.ibm.com/guides/handbook.html>

Software Maintenance does not include assistance for the design and development of applications, your use of programs in other than their specified operating environment, or failures caused by products for which IBM is not responsible under the applicable agreements.

For additional information about the International Passport Advantage Agreement and the IBM International Passport Advantage Express Agreement, visit the Passport Advantage Web site at

<http://www.ibm.com/software/passportadvantage>

**Volume orders (IVO):** No

**iSeries™ Software Maintenance applies:** No

**Educational allowance available:** Not applicable

---

## IBM Electronic Services

---

IBM Global Services has transformed its delivery of hardware and software support services to put you on the road to higher systems availability. IBM Electronic Services is a Web-enabled solution that provides you with an exclusive, no-additional-charge enhancement to the service and support available on the IBM eServer® platform. These services provide the opportunity for greater system availability due to faster problem resolution and preemptive monitoring. IBM Electronic Services is comprised of two separate but complementary elements: IBM Electronic Services news page and IBM Electronic Service Agent™.

IBM Electronic Services news page provides you with a single Internet entry point that replaces the multiple entry points traditionally used by customers to access IBM Internet services and support. The news page enables you to gain easier access to IBM resources for assistance in resolving technical problems.

The IBM Electronic Service Agent is no-additional charge software that resides on your IBM eServer system. It is designed to proactively monitor events and transmit system inventory information to IBM on a periodic, customer-defined timetable. The IBM Electronic Service Agent tracks system inventory, hardware error logs, and performance information. If the server is under a current IBM maintenance service agreement or within the IBM warranty period, the Service Agent automatically reports hardware problems to IBM. Early knowledge about potential problems enables IBM to provide proactive service that may result in higher system availability and performance. In addition, information collected through the Service Agent will be made available to IBM service support representatives when they are helping answer your questions or diagnosing problems.

To learn how IBM Electronic Services can work for you, visit

<http://www.ibm.com/support/electronic>

## Prices

---

### Passport Advantage

For Passport Advantage information and charges, contact your IBM representative or authorized IBM Business Partner. Additional information is also available at

<http://www.ibm.com/software/passportadvantage>

### Business Partner information

If you are an IBM Business Partner — Distributor for Workstation Software acquiring products from IBM, you may link to Passport Advantage Online for resellers where you can obtain Business Partner pricing information. An IBM ID and password are required. Copy the Web address below into the address field of your browser.

<https://www.ibm.com/software/howtobuy/passportadvantage/paoreseller>

---

## Order now

---

To order, contact the Americas Call Centers or your local IBM representative.

To identify your local IBM representative, call 800-IBM-4YOU (426-4968).

Phone: 800-IBM-CALL (426-2255)  
Fax: 800-2IBM-FAX (242-6329)  
Internet: [callserv@ca.ibm.com](mailto:callserv@ca.ibm.com)  
Mail: IBM Americas Call Centers  
Dept. Teleweb Customer Support, 9th floor  
105 Moatfield Drive  
North York, Ontario  
Canada M3B 3R1

Reference: YE001

The Americas Call Centers, our national direct marketing organization, can add your name to the mailing list for catalogs of IBM products.

**Note:** Shipments will begin after the planned availability date.

### Trademarks

iSeries and Electronic Service Agent are trademarks of International Business Machines Corporation in the United States or other countries or both.

Passport Advantage, Rational, WebSphere, ClearCase, CICS, DB2, ClearQuest, zSeries, XDE, S/390, eServer, and PartnerWorld are registered trademarks of International Business Machines Corporation in the United States or other countries or both.

Pentium and Intel are registered trademarks of Intel Corporation.

Microsoft and Windows are trademarks of Microsoft Corporation.

Java is a trademark of Sun Microsystems, Inc.

Linux is a trademark of Linus Torvalds in the United States, other countries or both.

Other company, product, and service names may be trademarks or service marks of others.

---

This announcement is provided for your information only. For additional information, contact your IBM representative, call 800-IBM-4YOU, or visit the IBM home page at: <http://www.ibm.com>.