

Markus Keppeler

AIM Technical Pre-Sales

IBM Deutschland Informationssysteme GmbH



IBM WebSphere Application Server and Extensions

WebSphere

■ the fastest way to dynamic e-business ■

Customer and Partner Applications

Application Accelerators

[Development](#)

[Presentation](#)

[Deployment](#)

[Integration](#)

Foundation Extensions

Cross-Platform Foundation

Customer and Partner Applications

MQSeries Workflow **WS Commerce Suite** **Lotus Collaboration** **WS B2B Integrator**
Application Accelerators

Development

WS Homepage Builder
 WS Studio
 VisualAge for Java
 Versata Studio
 WS Business Components
 VisualAge Generator

Presentation

WS Transcoding Publisher
 WS Everyplace Suite
 WS Voice Server
 WS Translation Server
 WS Personalization
 WS Portal Server
 Web Content Management

Deployment

WS Edge Server
 WS Site Analyzer
 Tivoli Policy Director

Integration

MQSeries Integrator
 MQ Adapter Offering
 Host Integration

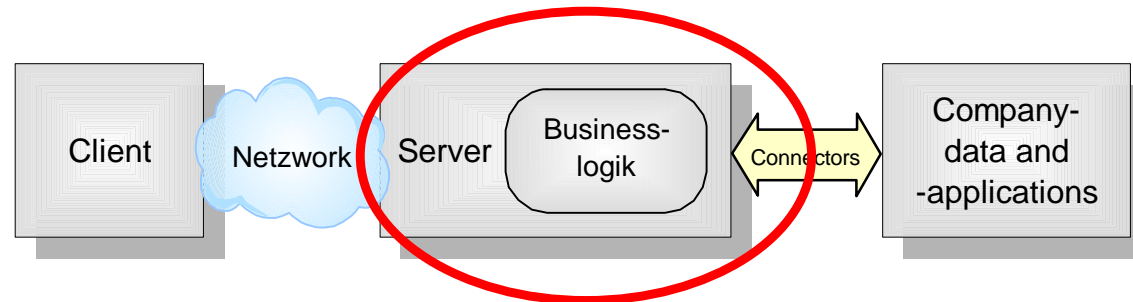
Foundation Extensions

WebSphere Application Server

MQSeries

Cross-Platform Foundation

Application Server Tasks



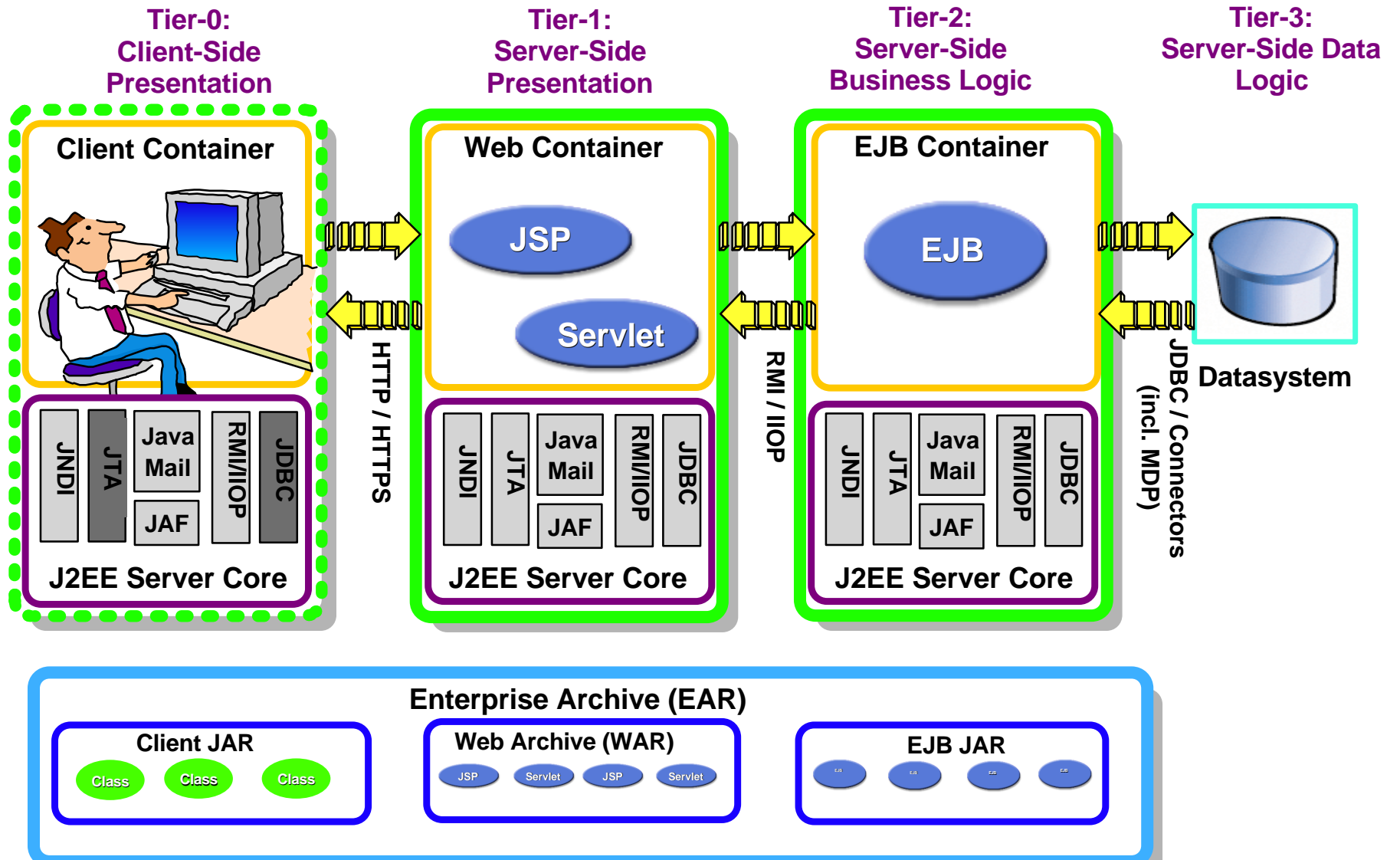
▶ functional

- ▶ Session State Management
- ▶ Runtime for Servlets, Java-Businesskomponenten, JSPs
- ▶ Connect to Backendsystemen

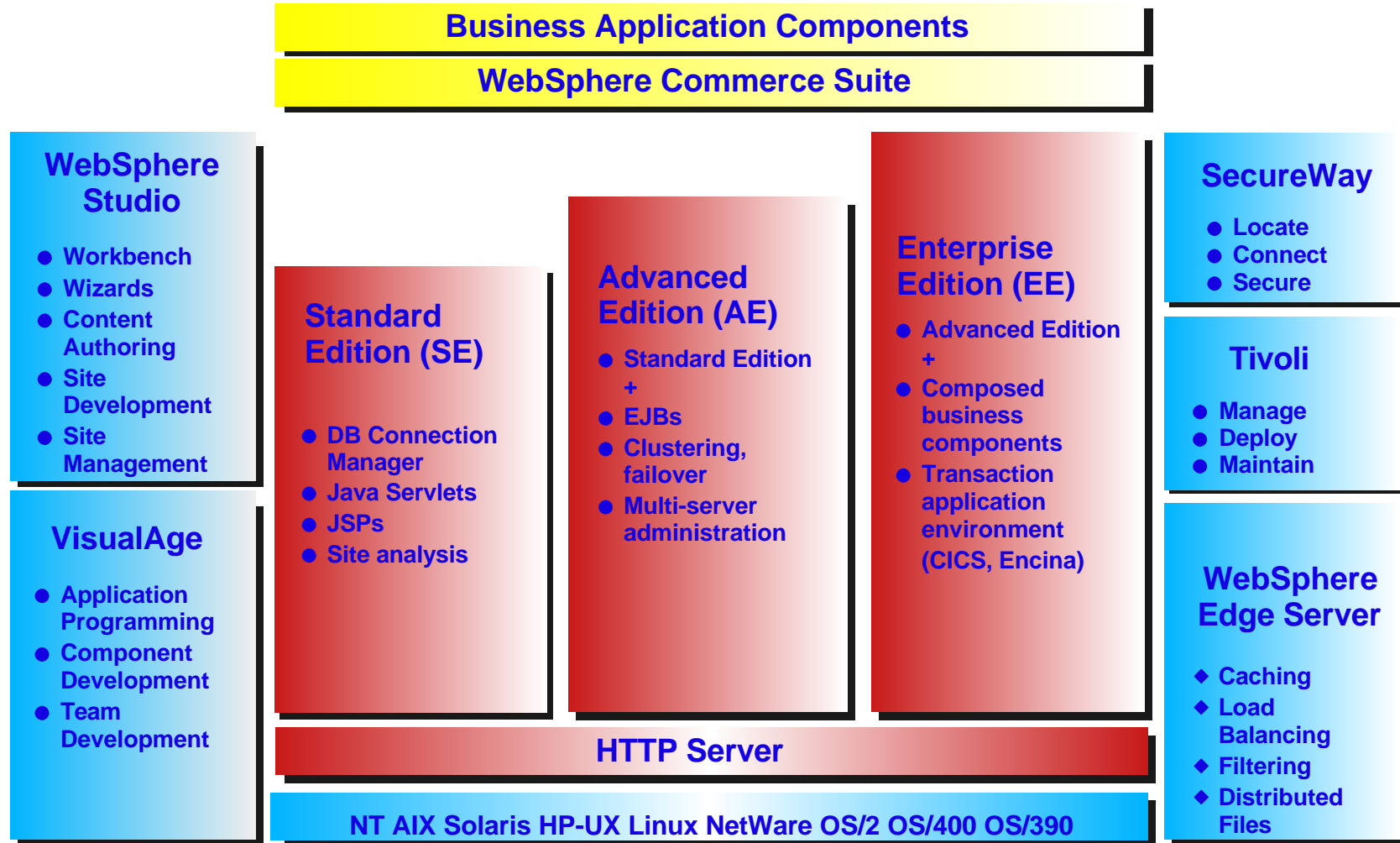
▶ non-functional

- ▶ Highperformance access
- ▶ Scalability (horizontal and vertical)
- ▶ Availability (failover handling and load balancing)
- ▶ Extensions
- ▶ Flexibility

J2EE Server Model



WebSphere Application Server



Build

Run

Manage

IBM HTTP Server

- HTTP Server (powered by Apache)
 - ▶ Graphical Administration (Concept 2)
 - ▶ Machine Translation between languages
 - ▶ WebDav Support for versioning
 - ▶ Security improvements
 - Password encryption on NT
 - LDAP, SSL improvements
 - Single sign-on to domain using LTPA
 - ▶ FastCGI support
 - ▶ Tivoli and SNMP instrumentation
 - ▶ Performance improvements on AIX and NT
 - AFPA / FRCA cacheing
 - ▶ Proxy/Cache module
 - ▶ Session affinity

Step 1 - informational websites

- WebSphere Standard Edition v3.5
 - ▶ Optimised access to databases
 - ▶ Personalisation Support
 - ▶ XML support
 - ▶ Servlets and JSPs
 - Access DB2, Oracle, MQ, CICS, Tuxedo, etc as a non-transactional two-tier client
 - ▶ Integrates into enterprise security with LDAP
 - ▶ Works with all major web servers
 - IIS, Netscape, Apache, Domino
 - ▶ IBM JDK 1.2.2 support
 - ▶ Alternative configuration tools
 - XMLConfig / WSCP / HTTP-base admin
 - ▶ Tivoli Plus modules

Step 2 - standalone transactional systems

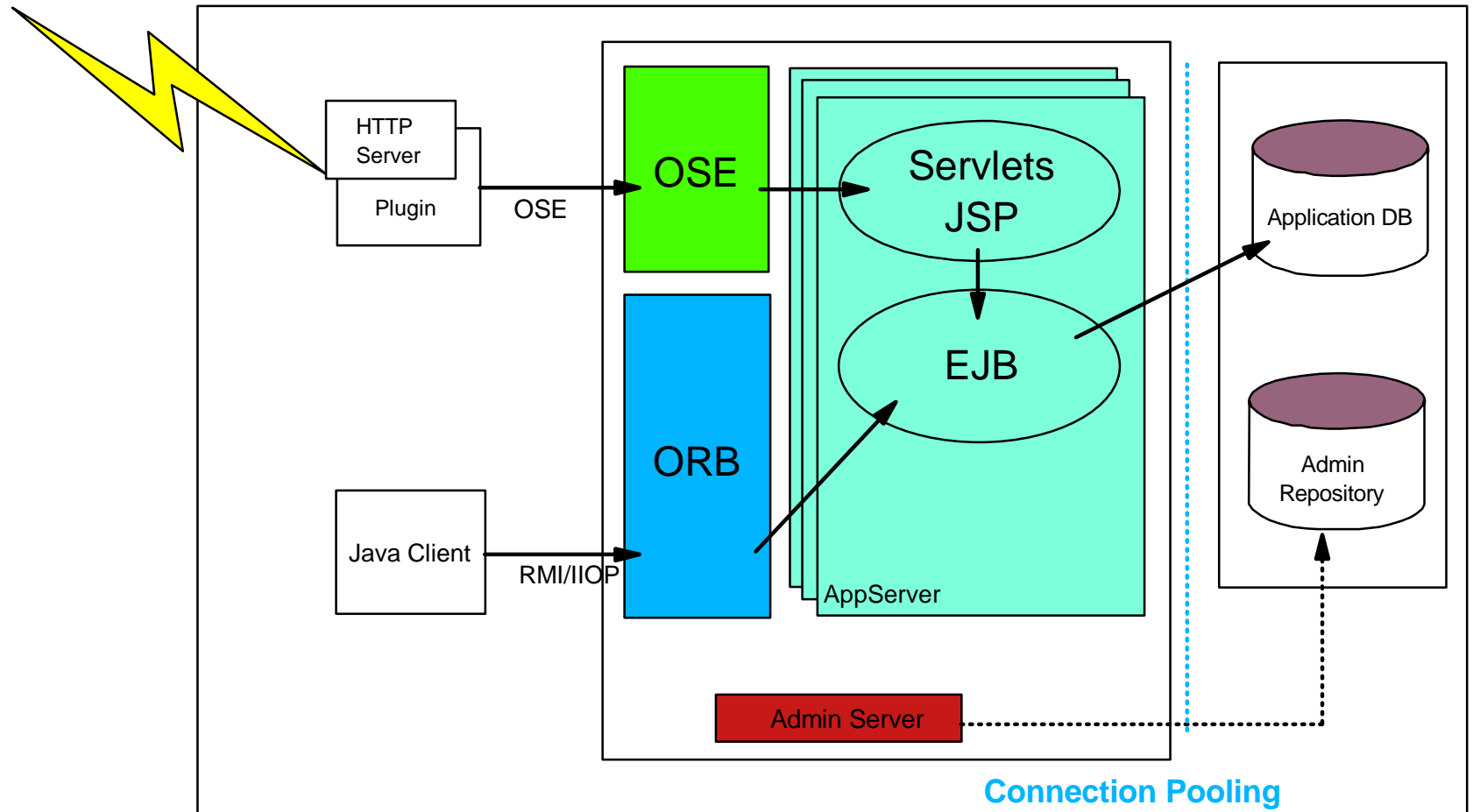
- WebSphere Advanced Edition v3.5
 - ▶ Scalable, Highly available transactional runtime
 - Multiple replicated nodes
 - ▶ EJB 1.0 plus support, including container managed persistence, RMI/IIOP, JMS, JTA/JTS
 - ▶ ACID transactions
 - ▶ Integrates with DB2, Sybase and Oracle databases
 - ▶ CORBA/IIOP support including enhanced Java ORB
 - ▶ One-Click install/Improved documentation
 - ▶ + all of Standard Edition

Step 3 - integrated transactional systems

- WebSphere Enterprise Edition v3.5
 - ▶ Supports EJBs, C++ and Java CORBA Business Objects, plus existing COBOL and C CICS and Encina transactions
 - ▶ Transactional integrity with DB2, Sybase, Oracle, IMS, CICS and MQSeries
 - ▶ Scalable
 - ▶ Full CORBA support (10/15 services) and support for Java, C++ and ActiveX clients

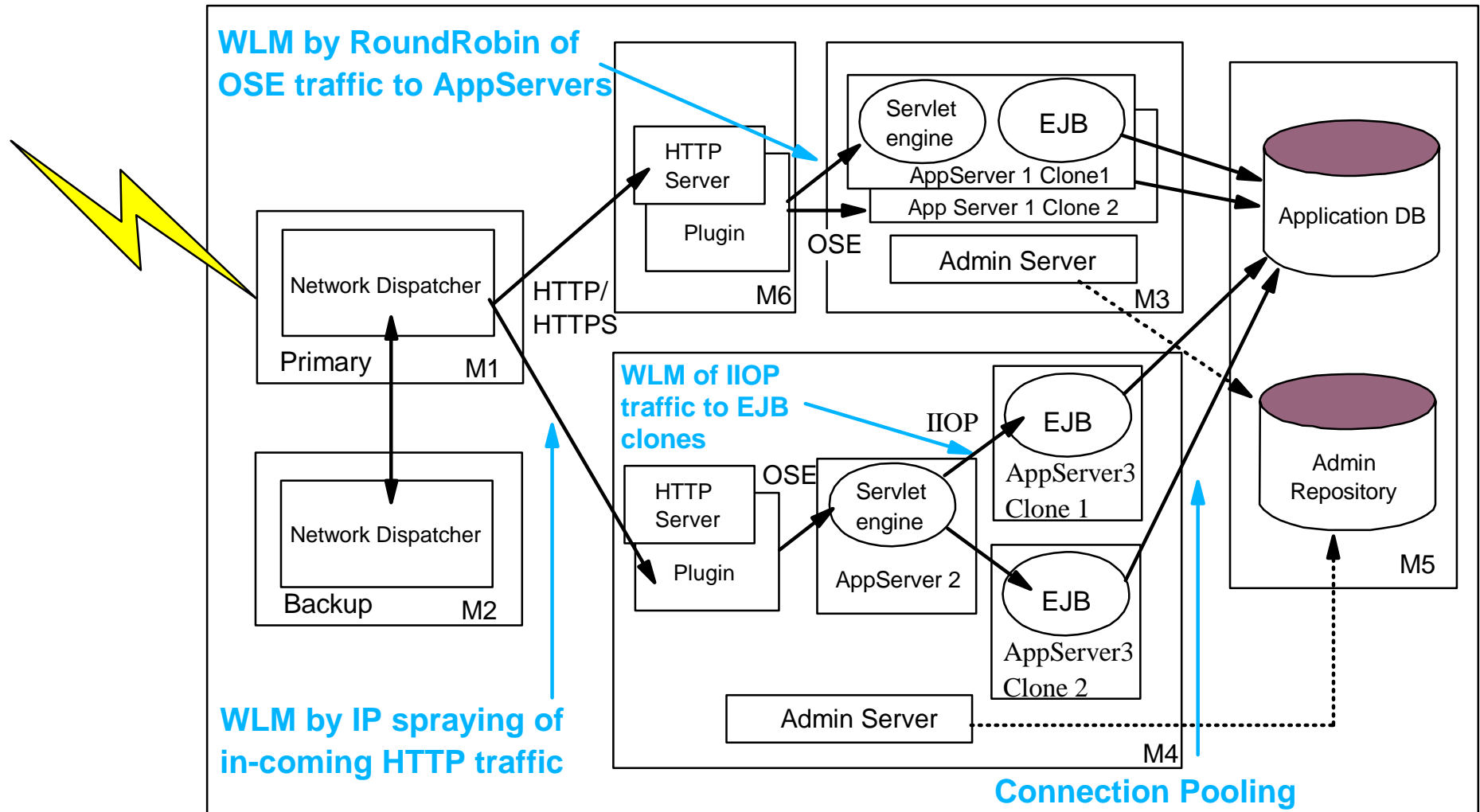
- + all of Standard & Advanced

WebSphere Architecture



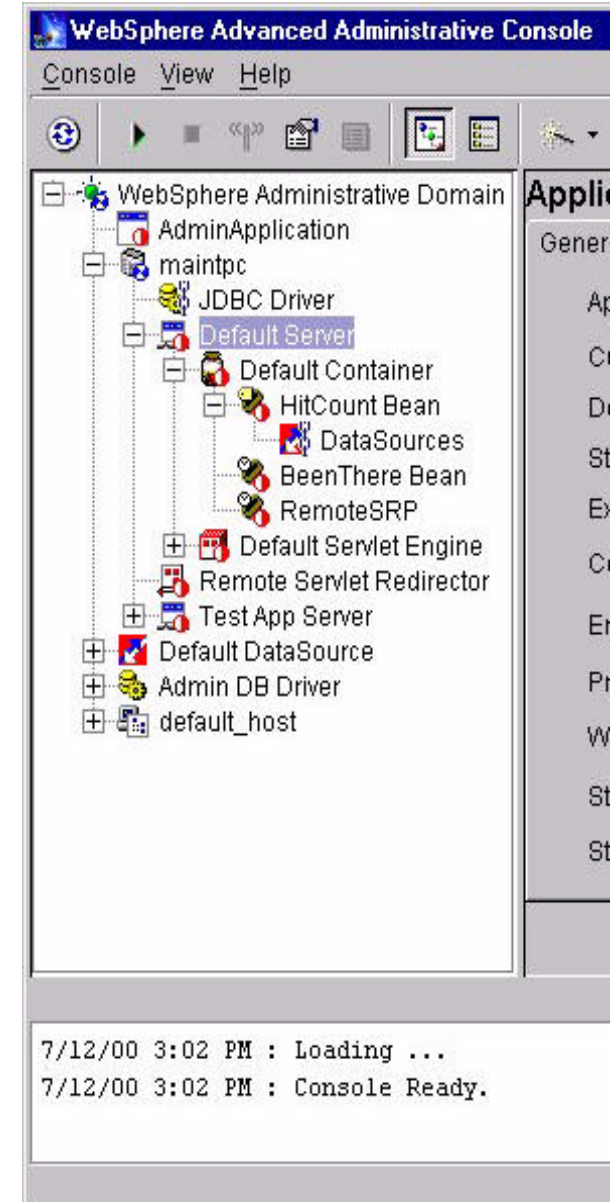
What is WebSphere WLM?

Use highly available database resources!



Admin Console Improvements

- Simplified menu
- Improved toolbar
- Performance Analyzer is a separate tool
- Better EJB deployment
 - ▶ Don't have to restart adminserver
 - ▶ Deployment descriptor can be viewed
- Enhanced tasks
- Context-sensitive actions
- Better Help
- New task wizards added
 - ▶ Create Data Source
 - ▶ Deploy Enterprise Beans
 - ▶ Security Tasks
 - ▶ Import/Export added
- Trace improvements



The XMLConfig Tool

- A utility based on Java classes in xmlconfig.jar
- Especially good for exporting and importing configurations
- Use from the command line:
 - ▶ Call setupCmdLine.bat/sh
 - ▶ Set up classpath
 - ▶ Invoke the XMLConfig tool

```
%JAVA_HOME%\bin\java %CLIENTSAS% -classpath %WAS_CP% -Dserver.root=%WAS_HOME%  
com.ibm.websphere.xmlconfig.XMLConfig %1 %2 %3 %4 %5 %6 %7 %8 %9
```

- Supported Operations

| | |
|--------|---------|
| Create | Update |
| Delete | Locate |
| Export | Start |
| Stop | Restart |
| Enable | Disable |

IBM Websphere Systems M...

- Introduction
- Commit All Modifications**
- Tasks
 - Create Objects
 - Create Virtual Host
 - Create Server
 - Create Servlet Engine
 - Create Web Applica
 - Create JDBC Driver
 - Create Data Source
 - Create Servlet
 - Export Workspace to X
- Resources
 - default_host
 - Admin DB Driver
 - Default DataSource
 - roman3500
 - Default Server
 - Default Servlet Engine
 - default_app
 - admin
 - install**
 - jsp10
 - file
 - invoker
 - ErrorReport
 - examples
 - WSsamplesD

install (servlet)

roman3500

Ready

The following properties have been assigned to this servlet. The properties may belong to the actual Administrative System Repository or they may have been altered within this Temporary Workspace.

NOTE: Submit Modifications will assign variables to the Temporary Workspace memory.

Servlet Properties

Name: install

Description: Install the WebServer Admin GUI

Java Class Name: com.ibm.servlet.engine.webapp.AdminClientServlet

Load Servlet at Server Startup? True False

Servlet Enabled: True False

Debug Mode: True False

Servlet URI Paths: /install

| NAME | VALUE |
|--------------------------------------|---------------------|
| install/ install/ IBMWebASv3_NT_Admi | adminclient.for.nt |
| install/ install/ IBMWebASv3_AIX_Adm | adminclient.for.aix |
| install/ install/ IBMWebASv3_SUN_Adm | adminclient.for.sun |

Init Parameters

Submit Modifications Delete Create Like...

How do you use?

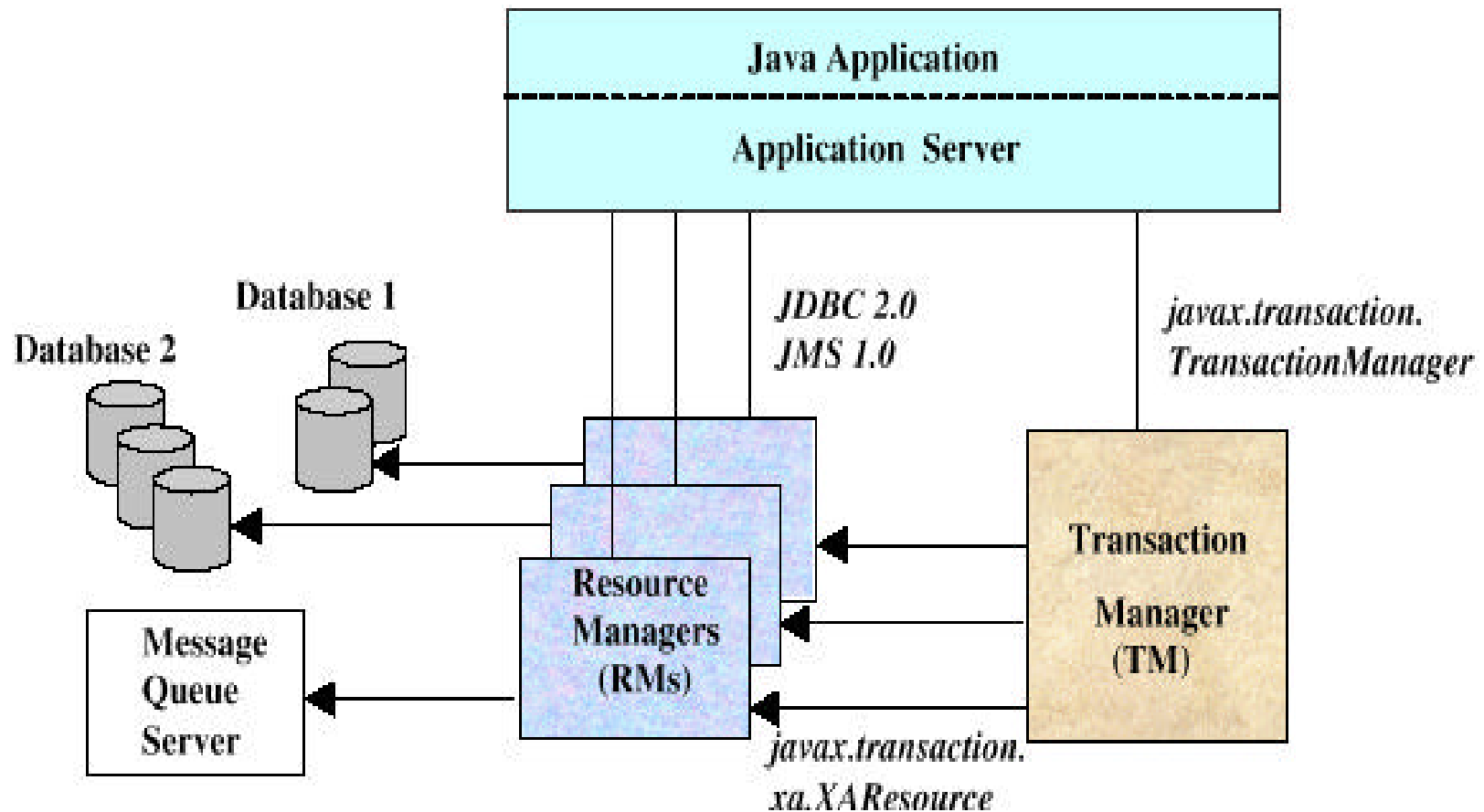
1. Navigate in topology tree
2. Change values
3. Submit changes
4. Repeat 2, 3 for many changes
5. Commit changes (write into repository as batch)

The wscp Tool (WS Control Program)

- Command-line program with interactive shell based on JACL (Java TCL)
- Use remotely by
 - ▶ Authenticating to the administrative server
 - Create a properties file
 - Add information to the .wscprc file
 - ▶ Connecting to the local and remote nodes
 - By default, wscp connects to the administrative server running on the local machine
 - Use the wscp.hostName property to specify a remote host
- Supported actions vary by object type
- Servlet actions include:

| | | |
|-------------|------------|--------|
| attributes | help | remove |
| containment | list | show |
| create | modify | start |
| defaults | operations | stop |

Application Server Transaction Mgmt



Basic Security Concepts

- Authentication
 - ▶ Process of verifying 'users'; i.e. userid/password, certificate or token

- Authorization
 - ▶ Process of determining if a principal has any rights to access a resource and the type of access
 - ▶ e.g. can a principal access a file; can he write or only read it

- Delegation
 - ▶ Process of giving a principal another identity

Authentication Mechanisms

■ Challenge Mechanisms

- None
- Basic (uid/pw)
- Certificate
- Token

■ Authentication Mechanisms

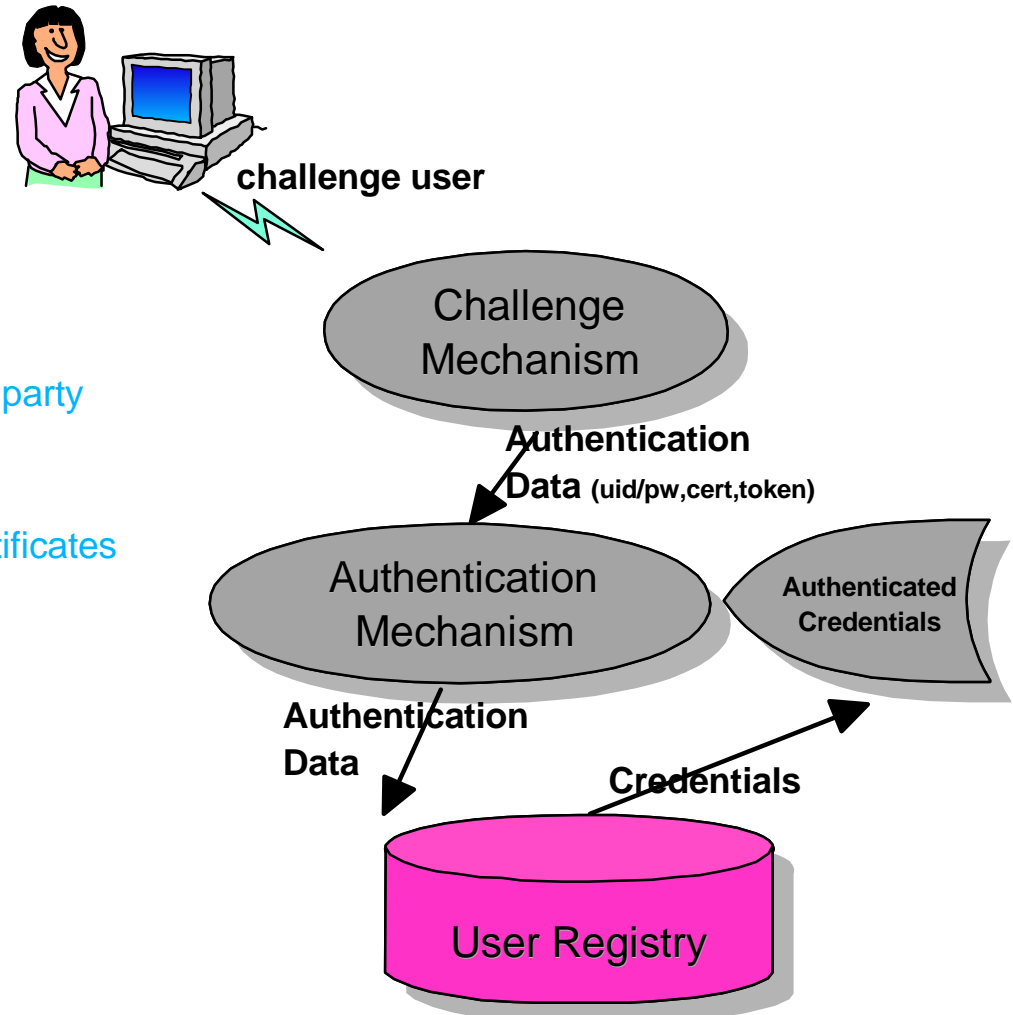
- **LTPA** - Lightweight, token-based, three party authentication
- **LDAP** - LDAP Bind over SSL
- **Certificate List** - List of valid digital certificates
- **User List** - List of valid users
- **OS** - Operating System authentication

■ User Registries

- **LDAP**
- **Operating System registry**

■ Secure Association Establishment

- **Inbound/Outbound Trust Lists**



WebServices - A New Web Model

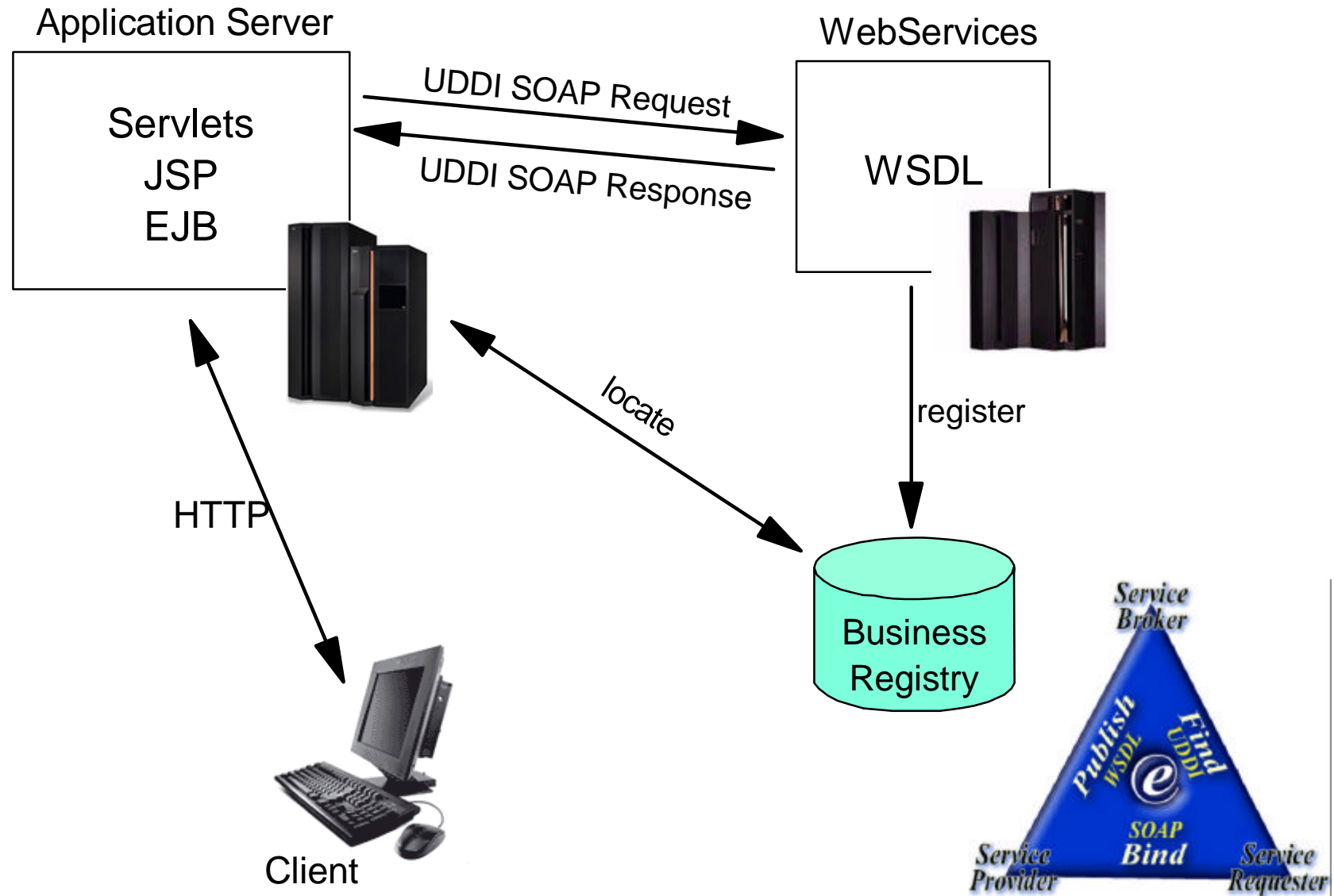
- Until now, the Web has provided for
 - ▶ browsing of linked documents
 - ▶ manually-initiated purchases and transactions
 - ▶ downloading files
 - all of this is manual, by way of a browser
- Web Services is a new model for using the Web
 - ▶ transactions initiated automatically by a program,
 - ▶ not necessarily using a browser
 - ▶ can be described, published, discovered, and invoked
 - ▶ dynamically in a distributed computing environment
 - ▶ new ways of using the web: intelligent agents,
 - ▶ marketplaces, auctions
 - all built on XML and other internet standards!

Web Services: Base Technologies

- SOAP - Simple Object Access Protocol
 - ▶ an XML protocol to invoke a method on a server to execute
 - ▶ a requested operation and get a response in XML
 - ▶ object-oriented programming on web-based objects
 - but with multiple return values
 - ▶ request message is sent by service requestor
 - ▶ response message is sent by service provider
- UDDI - Universal Description, Discovery, Integration
 - ▶ UDDI servers act as a directory of available services and
 - ▶ service providers
 - ▶ SOAP can be used to query UDDI for services
- WSDL - Web Services Description Language
 - ▶ an XML vocabulary to describe service interfaces



Web Services Scenario



Web Services Tools

- IBM Web Services Toolkit
 - ▶ An implementation of the Web Services architecture for creating, locating and invoking web services
 - ▶ Several useful papers on Web Services
 - ▶ Can be used with Apache Tomcat (included), or IBM WebSphere Application Server
 - ▶ Needs only a JDK to run
 - ▶ Available for free download from ibm.com/alphaworks
- IBM XML and Web Services Development Environment
 - ▶ Provides all of the developer tooling needed to create Web services
 - ▶ available at <http://www.ibm.com/alphaworks>



WebSphere Application Server 4.0

- IBM HTTP Server
 - ▶ Hardware Crypto Support
 - ▶ Security Enhancements
- Application Server
 - ▶ Single node/Multi node
 - ▶ J2EE 1.2.1 Full Programming Model Support including:
JSP 1.1, Servlet 2.2, EJB 1.1, JMS 1.0, JNDI 1.2, JSSE
 - ▶ Application Assembly Tool
 - ▶ Command Line Deployment Tool
 - ▶ XML4J 3.1.1 (Xerces 1.2.1) and Lotus XSL 2.0 (Xalan 2.0)
 - ▶ HTTP Transport (DMZ)
 - ▶ Web Services Enablement via SOAP, UDDI4J and WSDL
 - ▶ Tuning Wizzard
 - ▶ Message Beans
 - ▶ Dynamic Servlet/JSP Cache



Java Compatible™
Enterprise Edition

Java 2 Enterprise Edition (J2EE)

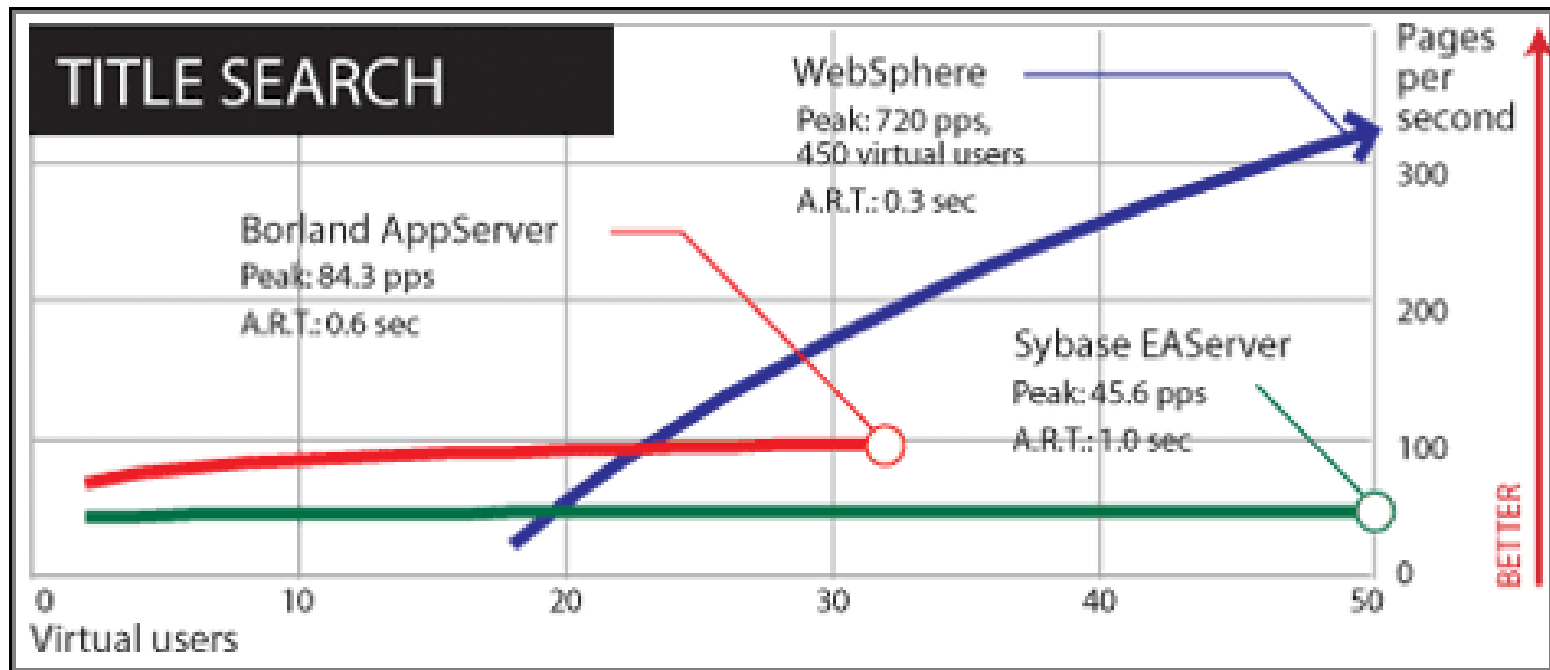
WebSphere Performance



Editors' Choice

IBM's **WebSphere Application Server**, Advanced Edition 3.5 was **by far the fastest** and **most scalable server** on the scenario test. At its peak, it maintained 4,000 virtual users at 177 pages per second. Because of its sophisticated dynamic page-caching algorithms, WebSphere was also the clear winner on the title search test. It also had the best A.R.T. at peak performance on nearly all of the tests.

(PC Magazine)



Summary

- Widest variety of operating system support
 - ▶ Provides scalability and freedom
- Quick and simple installation
 - ▶ Saves time and improves evaluations
- Built on mission-critical architecture
 - ▶ Better performance
 - ▶ High-availability and failover
- Flexible management
 - ▶ XML and scripting automate tasks
 - ▶ Shorter time to configure and deploy
 - ▶ Remote operations
 - ▶ Superior site analysis

IBM WebSphere Software

- ▶ IBM and e-business <http://www.software.ibm.com/ebusiness>
- ▶ IBM and Java <http://www.ibm.com/java>
- ▶ IBM Redbooks <http://www.redbooks.ibm.com>
- ▶ IBM WebSphere <http://www.software.ibm.com/webservers>
- ▶ IBM VisualAge Products <http://www.software.ibm.com/ad>
- ▶ Enterprise Java Beans <http://java.sun.com>

Software is the soul of e-business.

It takes **powerful software to transform** your business into an **e-business**.
That's the software **IBM makes.**



Customer and Partner
Applications

The difference
is WebSphere.

Development

Presentation

Deployment

Foundation Extensions

Web Application Serving and Integration

Foundation