

Ichimoku Kinko Hyo



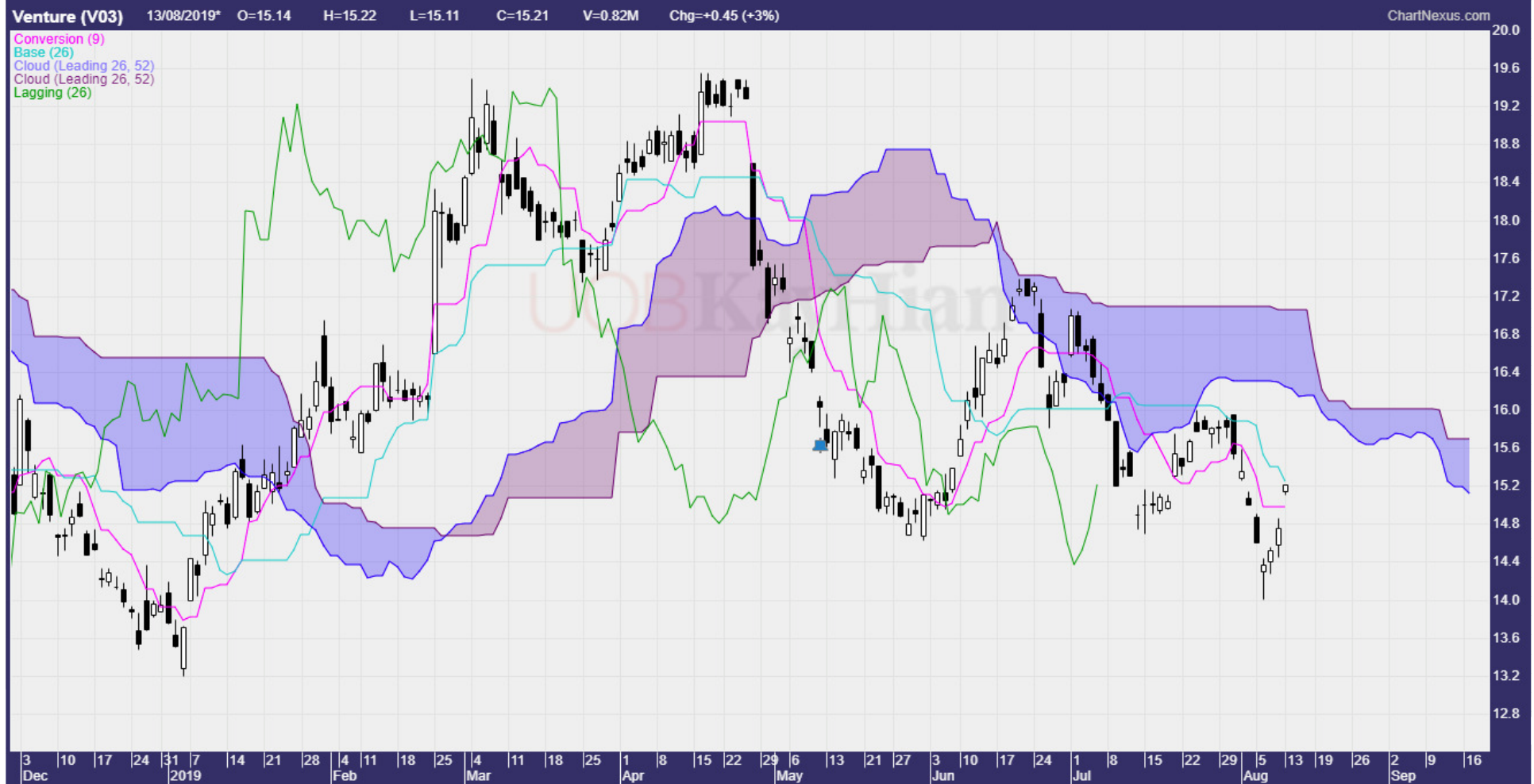
ONLINE TRADING
MADE EASY

UOBKayHian
Your trusted financial partner

Disclaimer

You may from time to time be provided with marketing material, investment & financial related information and reports, including but not limited to research reports and market or securities specific analysis. Please note that the information is provided for you by way of information only. All of the information, report and analysis were and should be taken as having been prepared for the purpose of general circulation and that none were made with regard to any specific investment objective, financial situation or the needs of any particular person who may receive the information, report or analysis (including yourself). Any recommendation or advice that may be expressed in or inferred from such information, reports or analysis therefore does not take into account and may not be suitable for your investment objectives, financial situation and particular needs.

First Look At The Ichimoku Chart



History Of Ichimoku Kinko Hyo

- **Developed by Goichi Hosoda**
- **Started in 1930s**
- **Took 30 years to formulate, test and perfect**
 - Using students to draw by hand and test
- **Published and introduced to the world in 1968**
- **Came to Western world in late 1990s to early 2000**
 - After Steve Nison's book

Concepts of Ichimoku Kinko Hyo

- **Can be a stand-alone trading system**
 - Dual MA crossover concept application
 - Support and Resistance trading
 - Directional view
 - Price projection
- **Best used in a trending market**
- **Not good for sideways**

Components of Ichimoku

Components of Ichimoku

Tenkan aka
Conversion

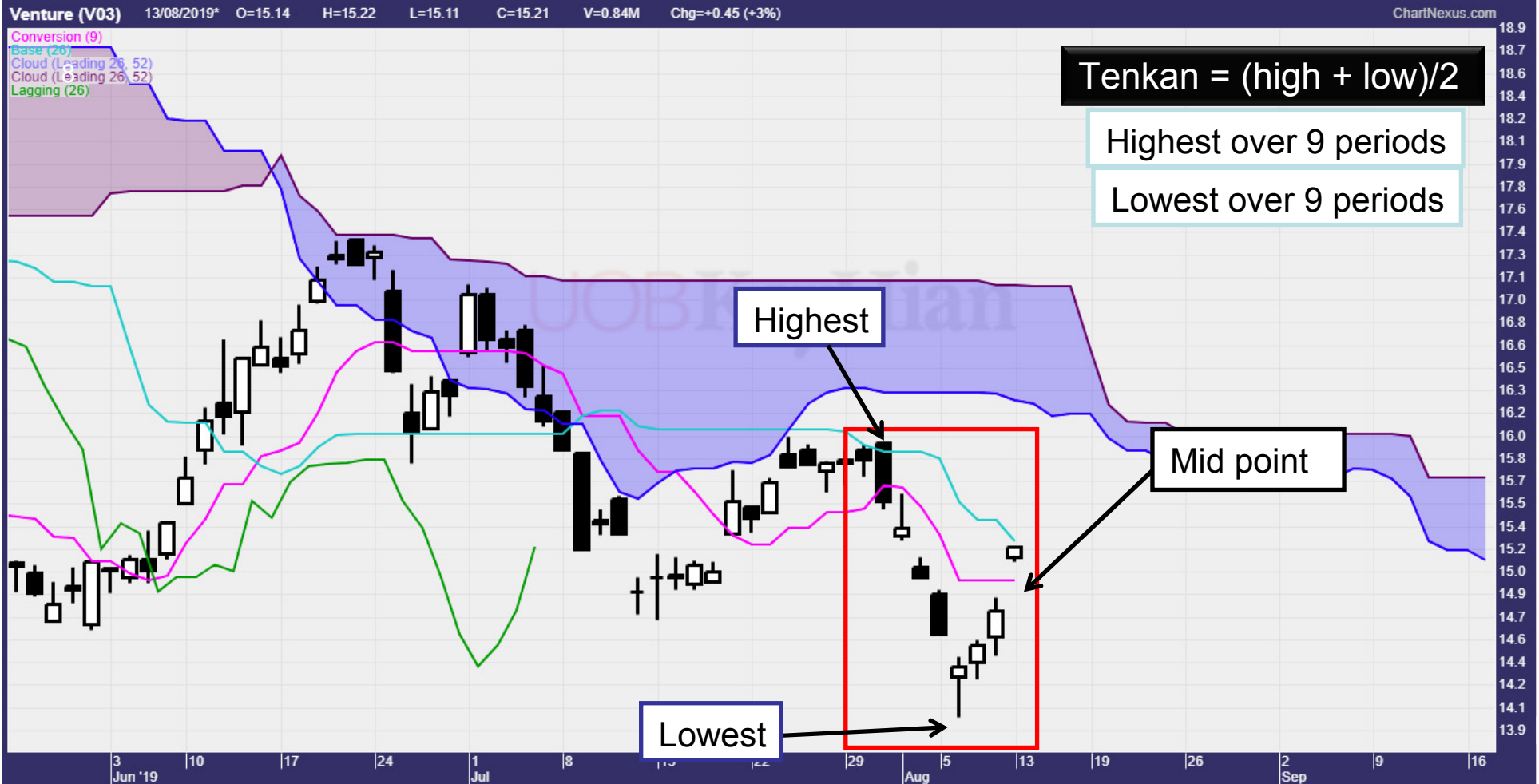
Kijun aka
Base

The 4 Components
of Ichimoku

Chikou aka
Lagging Span

Kumo aka
Cloud Leading

Tenkan Line aka Conversion



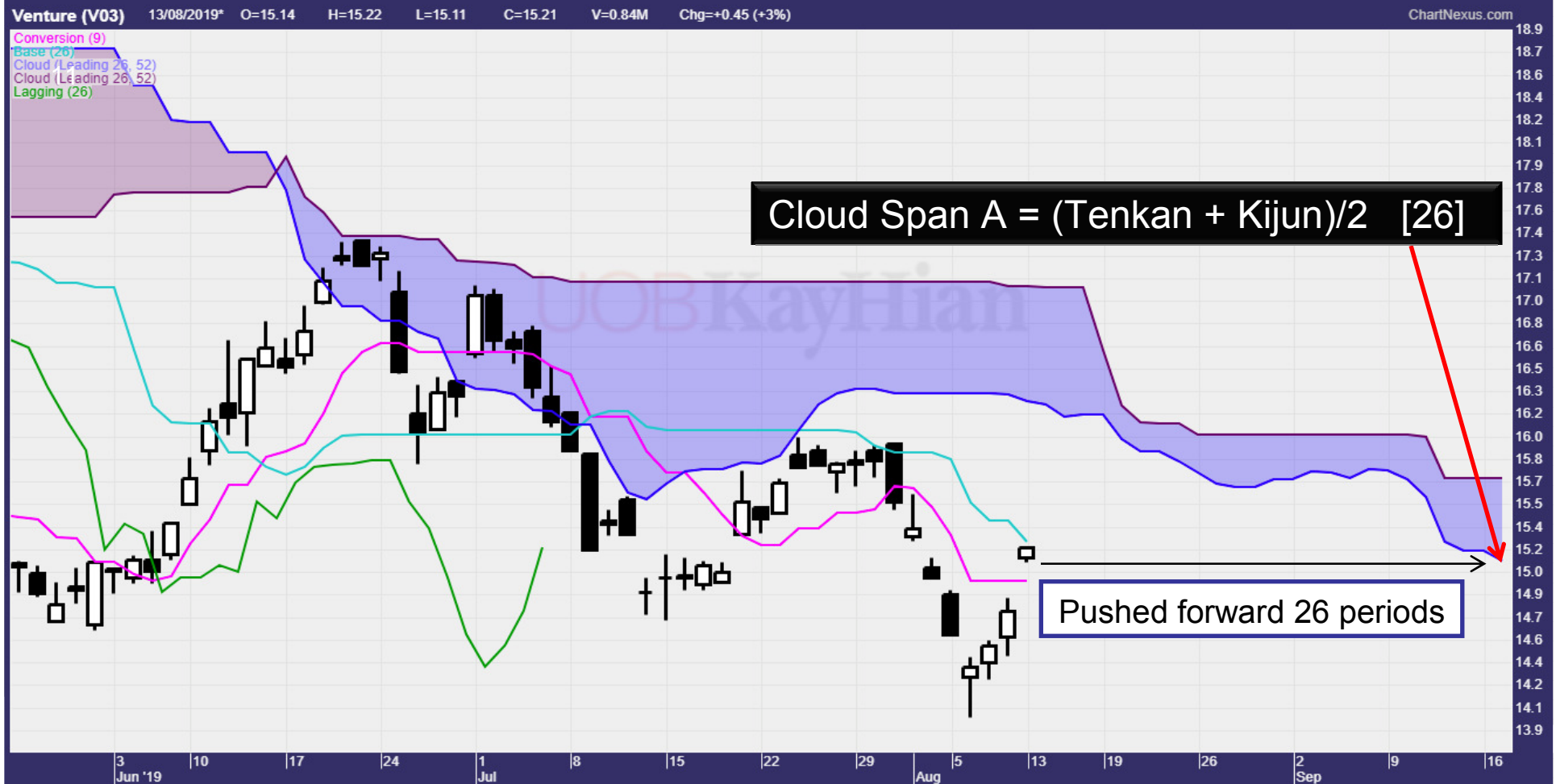
Kijun Line aka Base



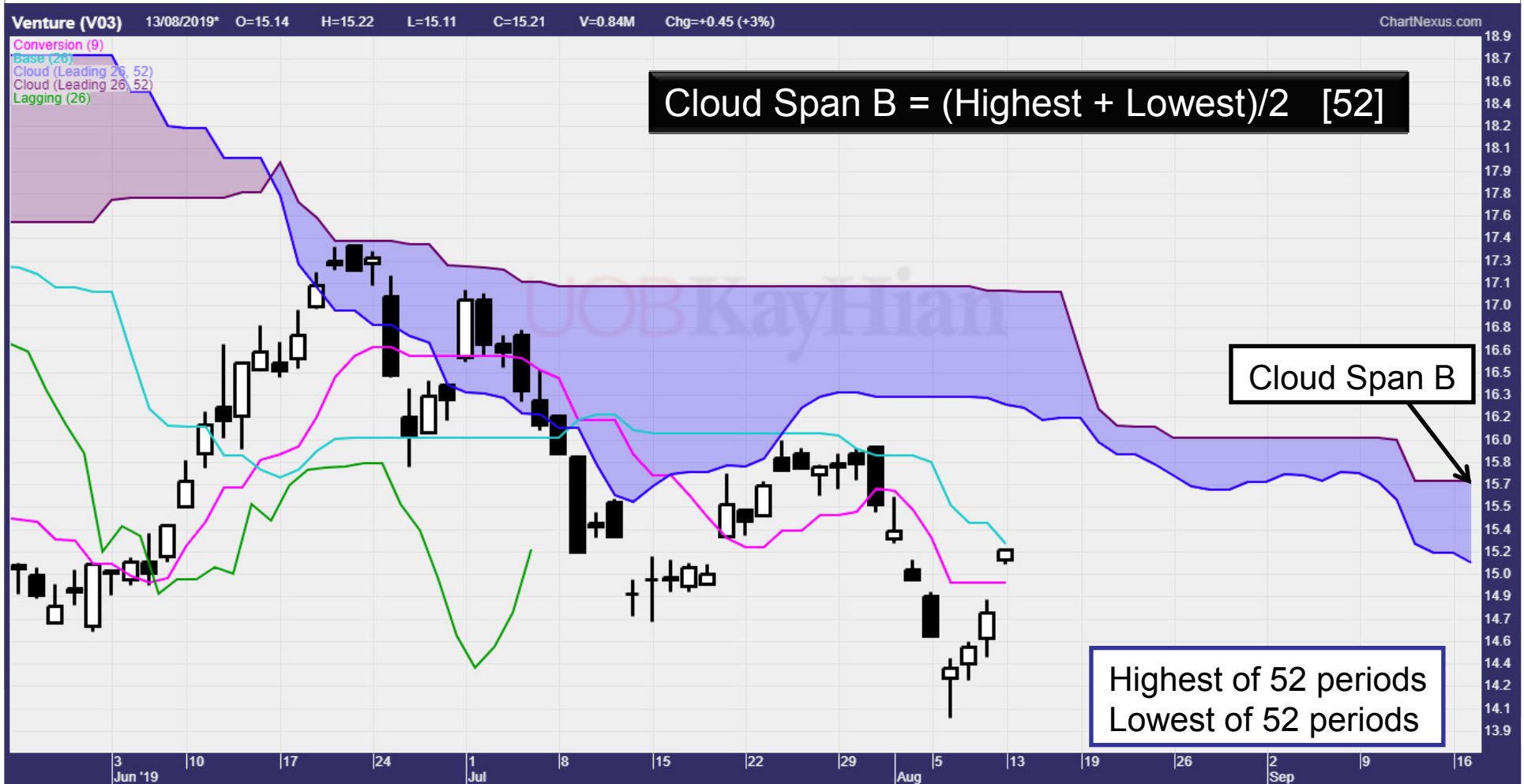
Chikou Line aka Lagging Span



Cloud Span A Line



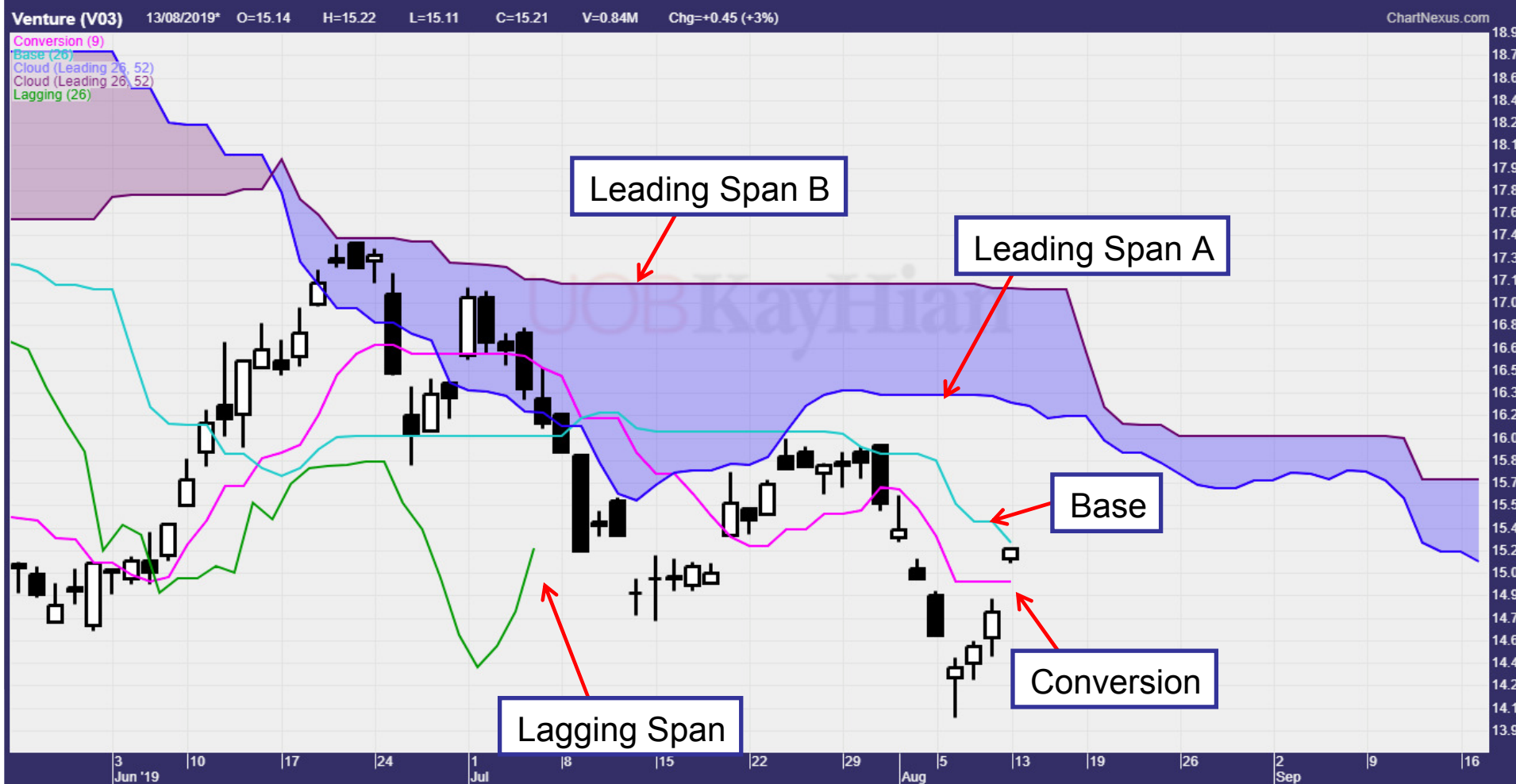
Cloud Span B Line



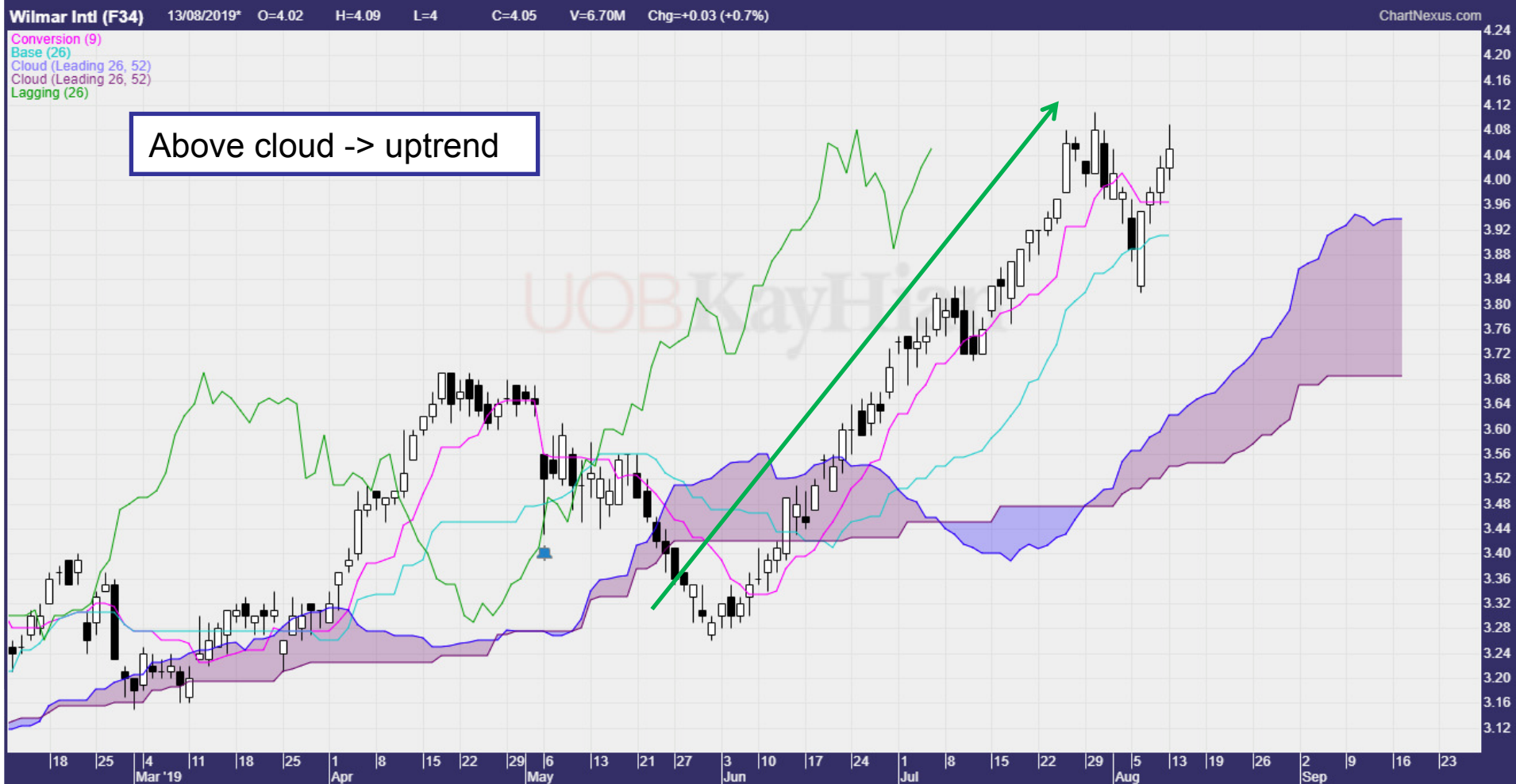
Ichimoku Cloud



Summary Of Ichimoku Components



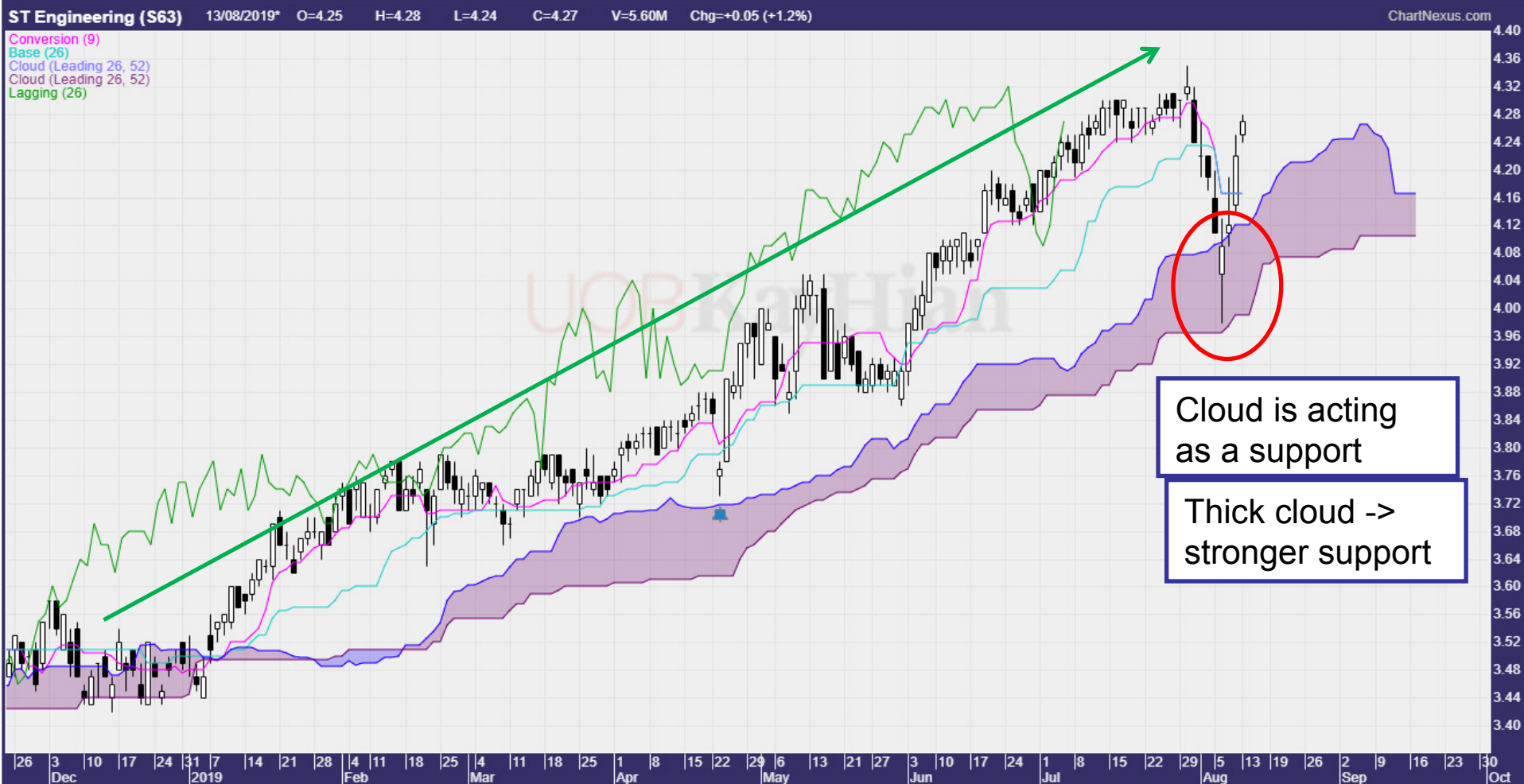
Trend in Ichimoku



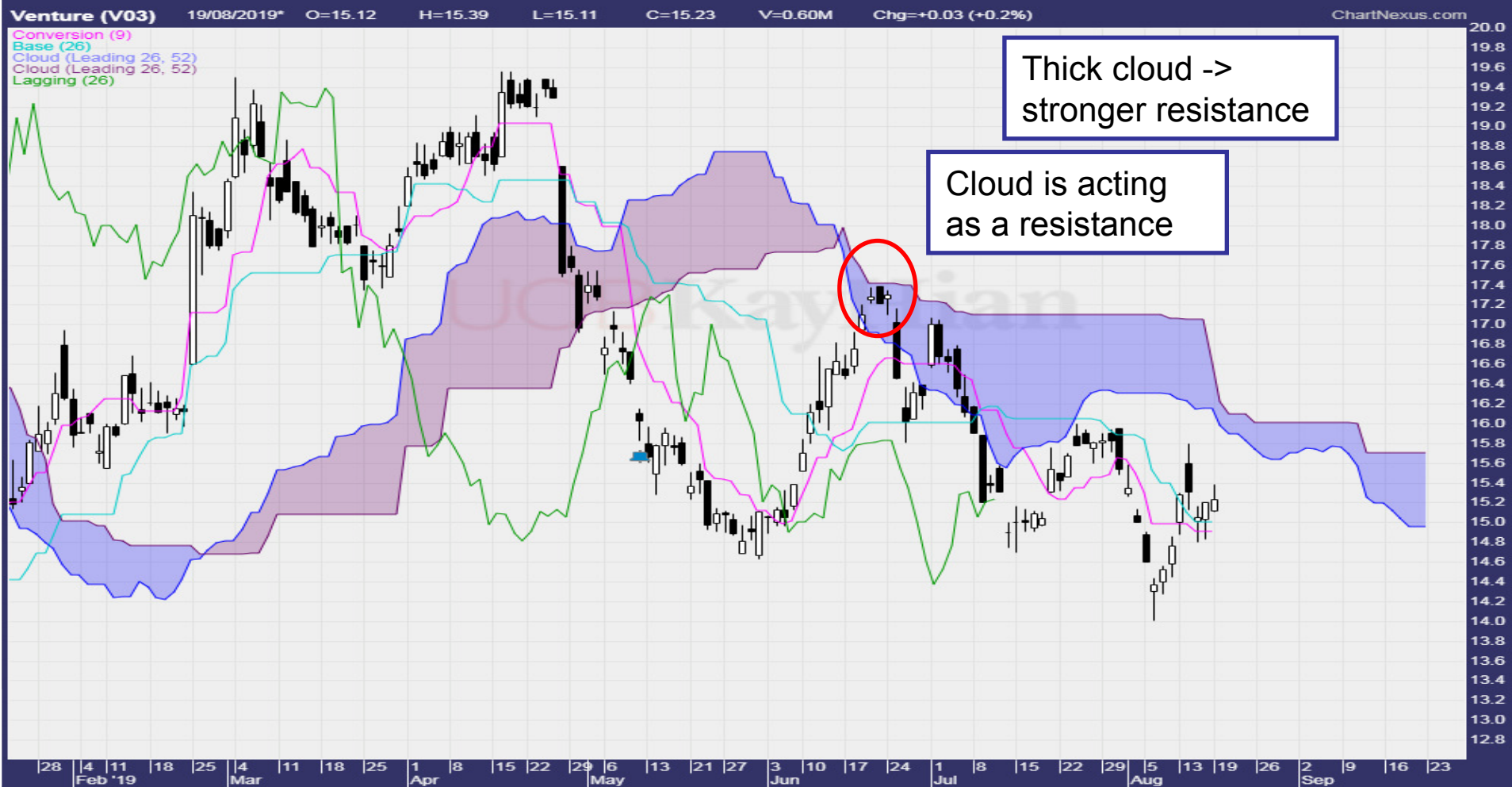
Trend in Ichimoku



Trend in Ichimoku



Trend in Ichimoku



Trend in Ichimoku

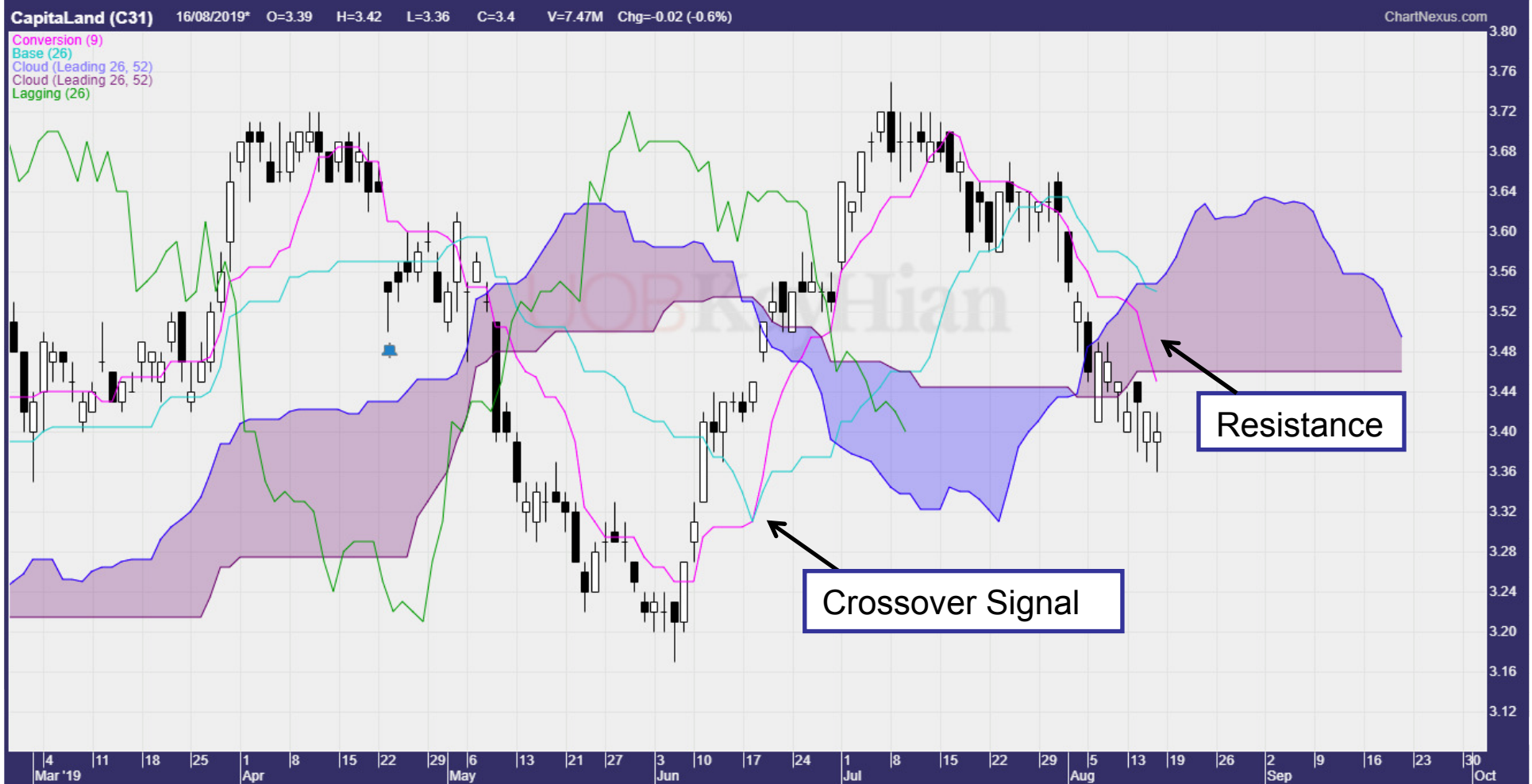


Characteristics of the Components

Characteristics of Tenkan Line

- **Faster indicator of market direction**
- **In very strong trend**
 - Acts as support or resistance in pullback
 - Very short term in nature
 - Very volatile
- **Used with Kijun**
 - Dual crossover trading signal

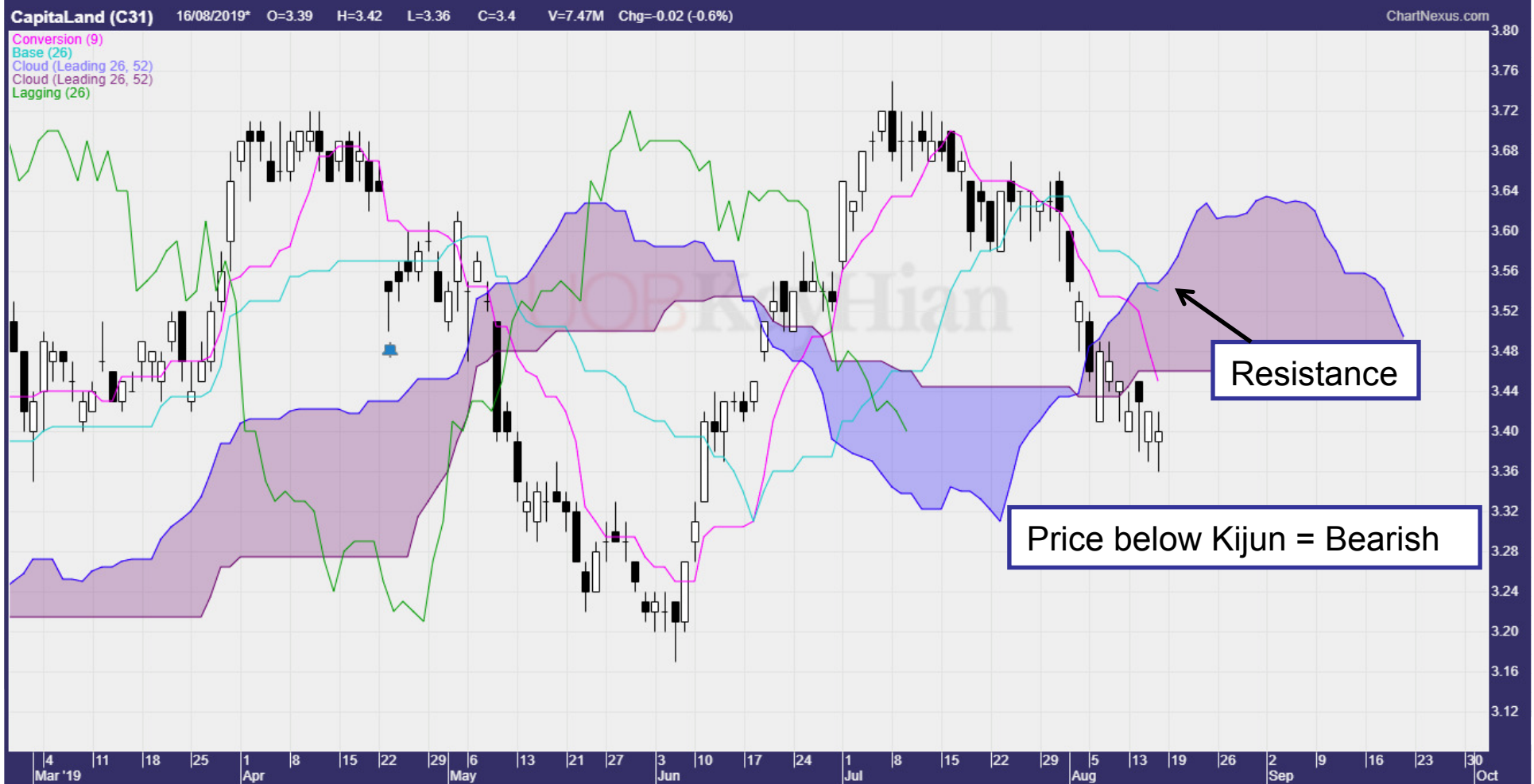
Characteristics of Tenkan Line



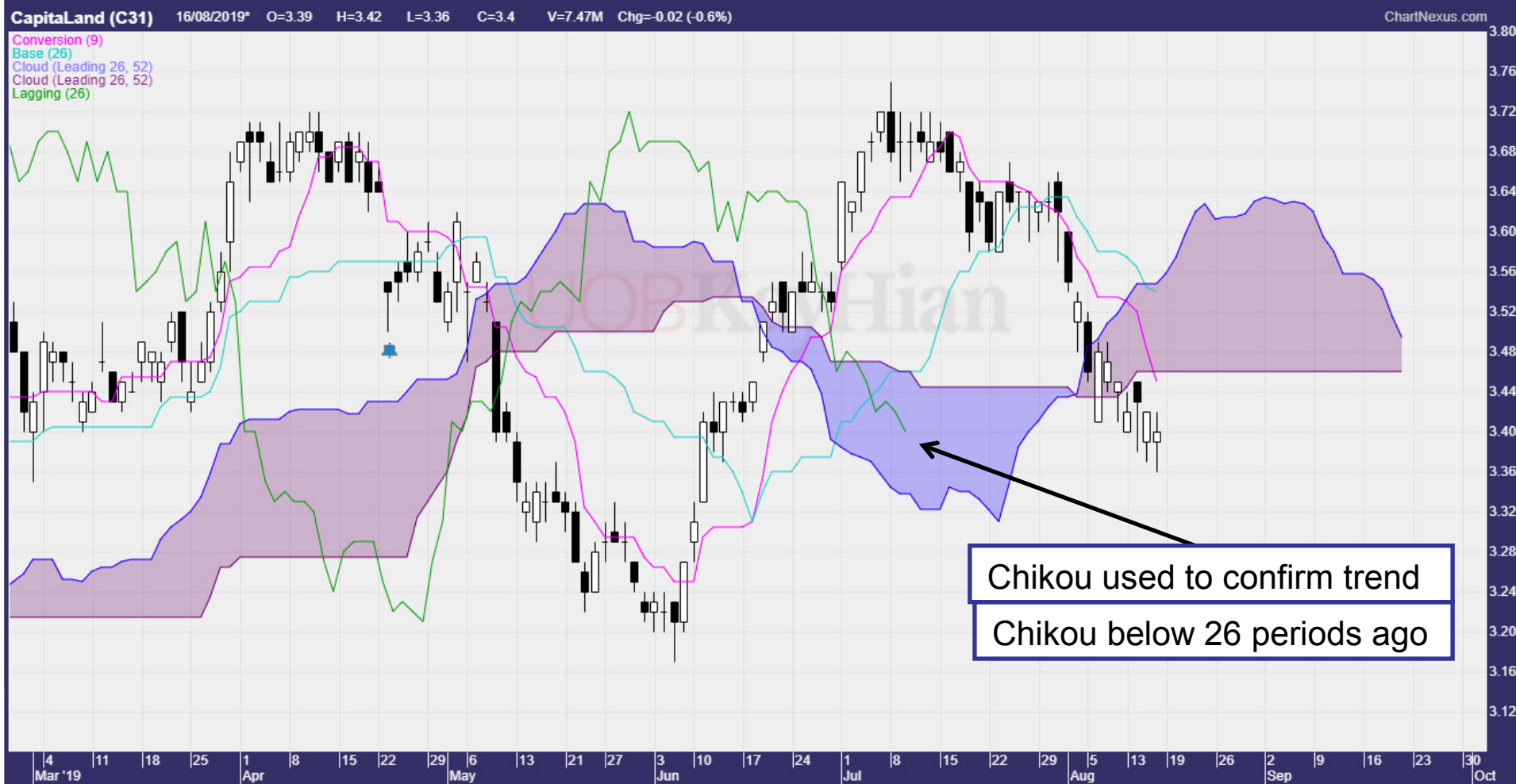
Characteristics of Kijun Line

- **Taken as market direction**
- **Price and Base Line scenario**
 - Price above Base line = Bullish
 - Price below Base line = Bearish
 - When compared with the Kumo, it is short term bullish or bearish
- **Trading Signal**
 - Price and Kijun crossover
 - Kijun as short term support or resistance

Characteristics of Kijun Line



Characteristics of Chikou Line

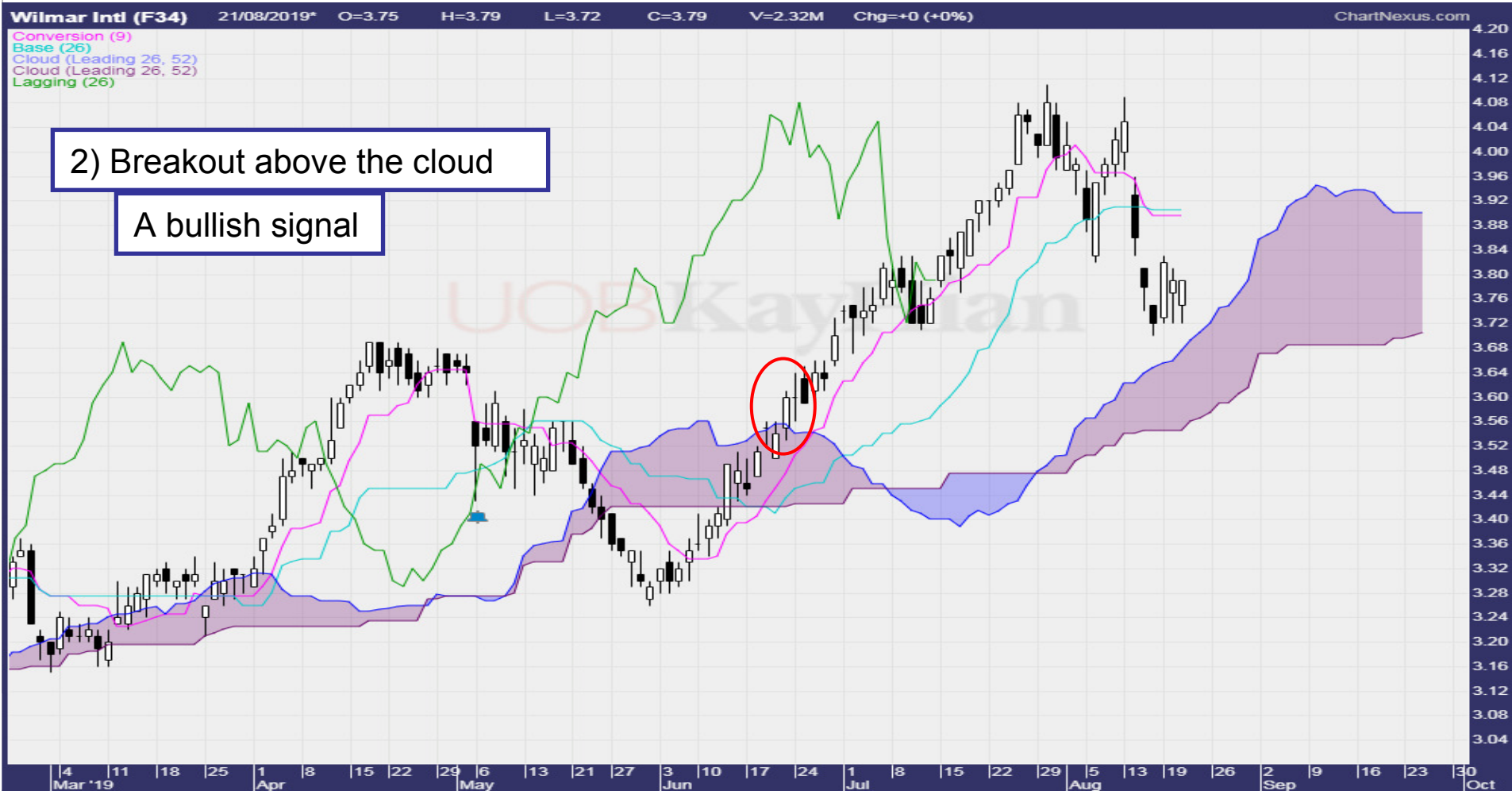


Trading with Ichimoku

Trading Strategy



Trading Strategy



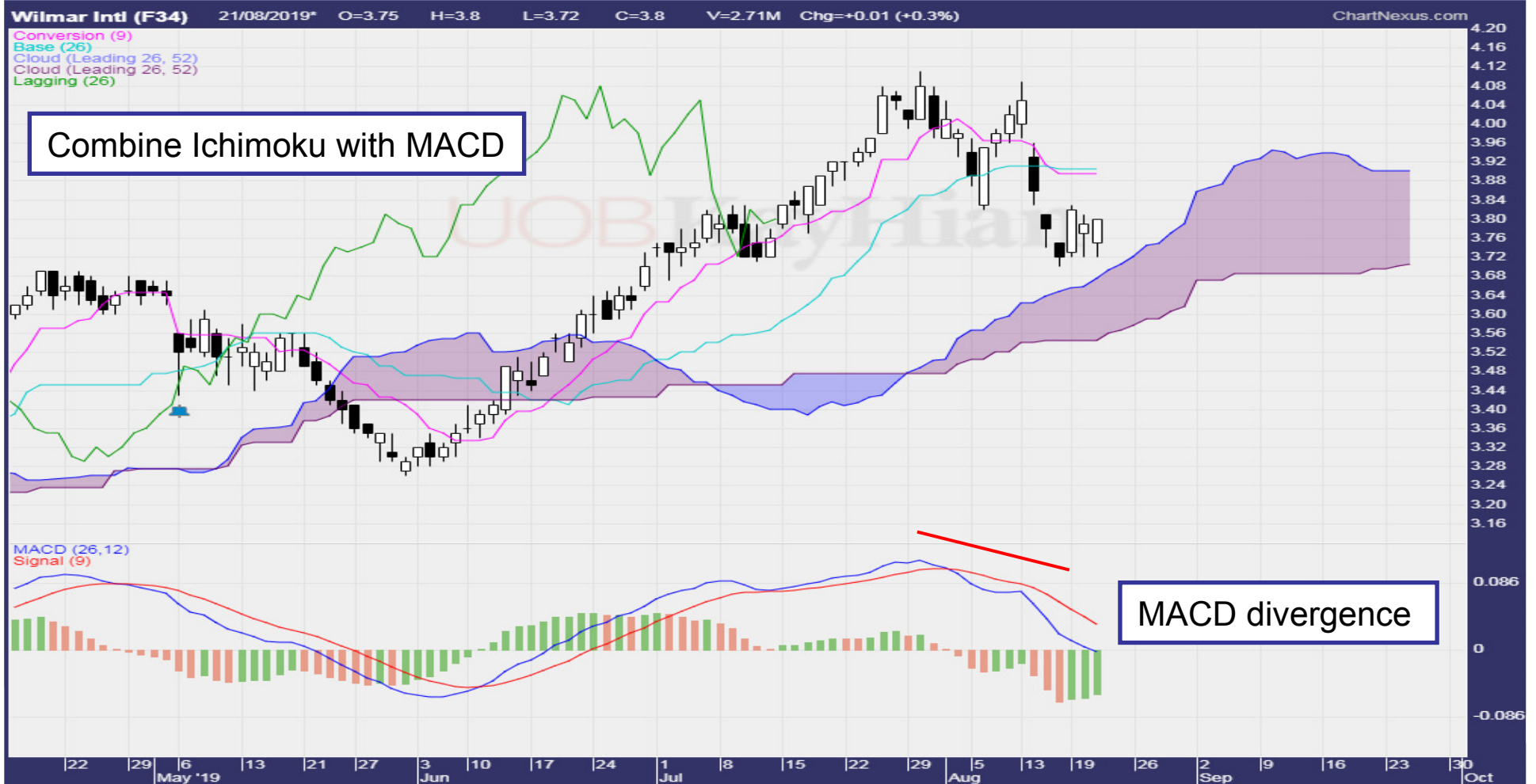
Trading Strategy



Trading Strategy



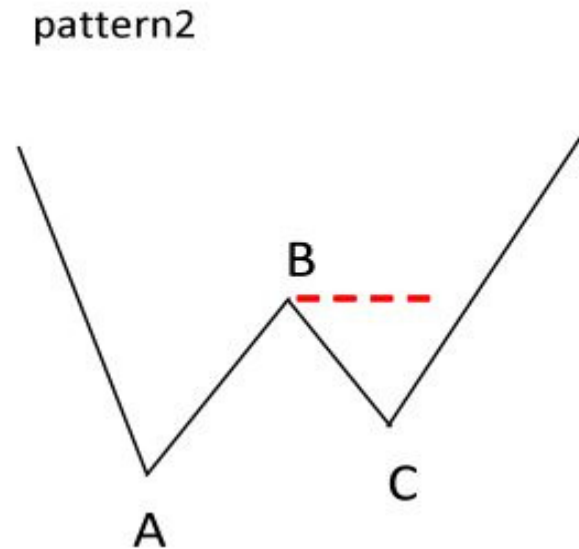
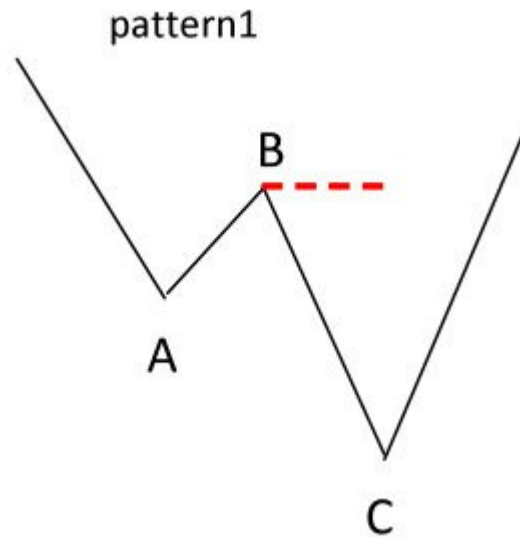
Trading Strategy



Reversal in Ichimoku

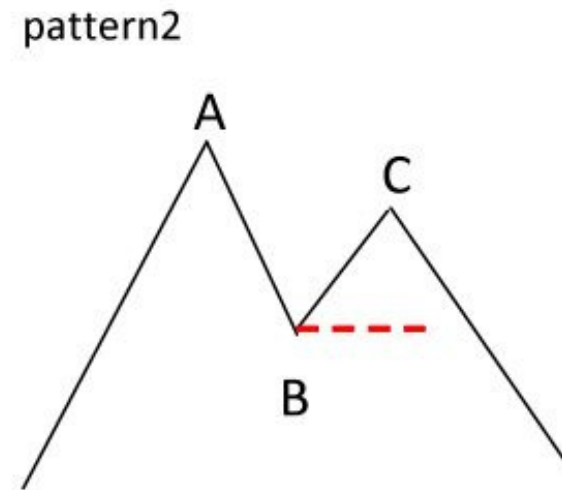
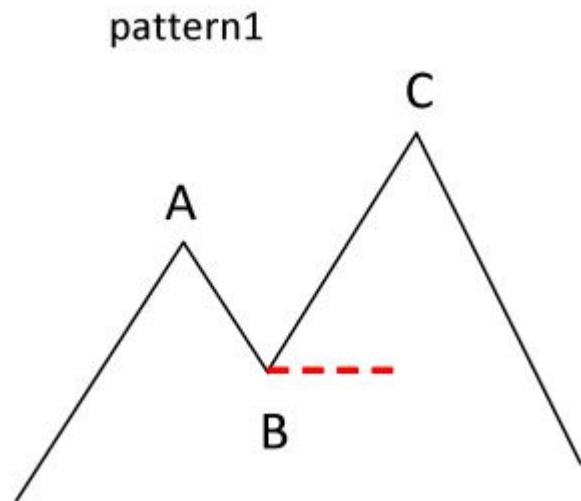
Trend Change in Ichimoku

Bottom Formation



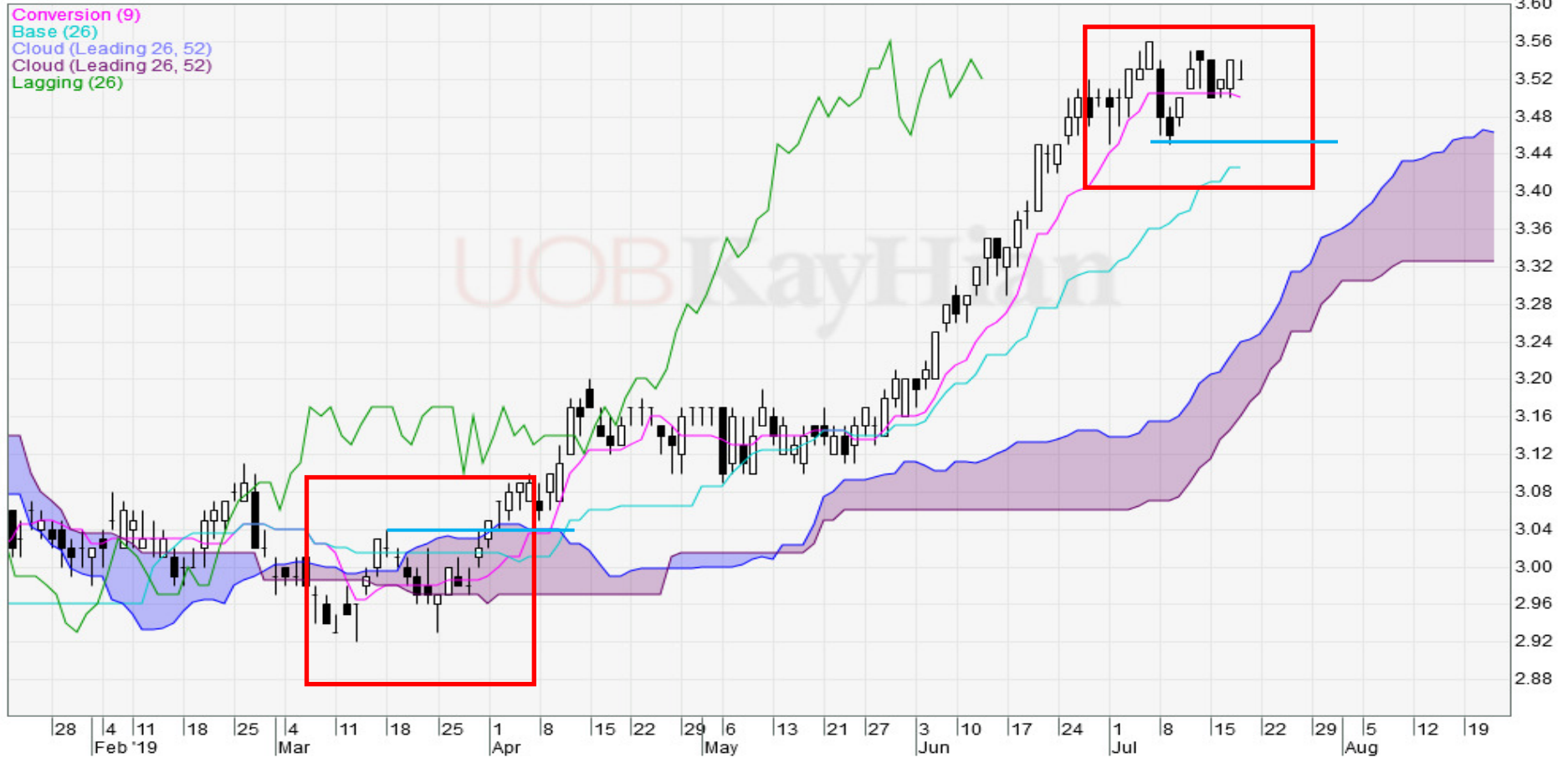
Trend Change in Ichimoku

Top Formation



Ichimoku Reversal

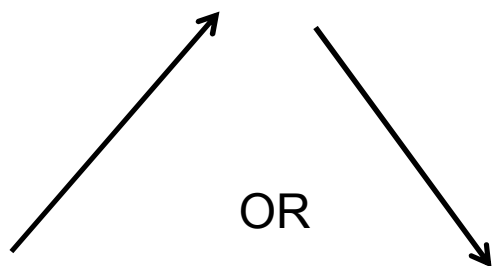
SingTel (Z74) 18/07/2019* O=3.52 H=3.54 L=3.52 C=3.52 V=4.22M Chg=-0.02 (-0.6%)



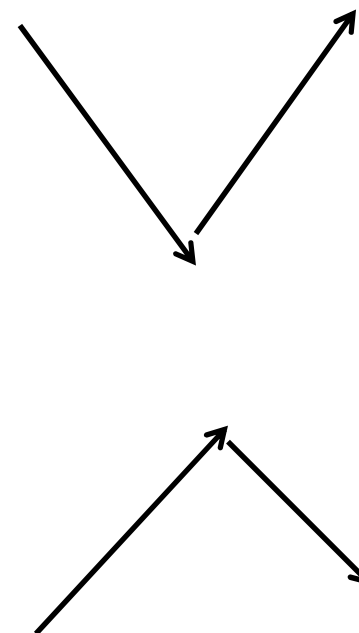
The Structure of Ichimoku

Basic Wave Structure

“I” Wave or 1 wave



“V” wave or 2 Waves

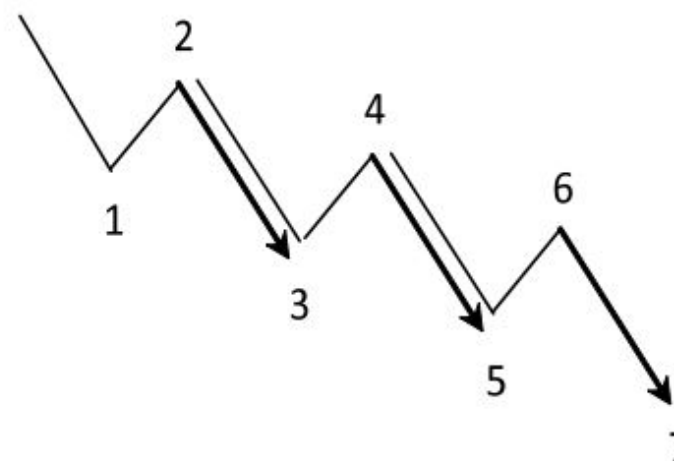


Basic Wave Structure

“N” Wave or 3 Waves

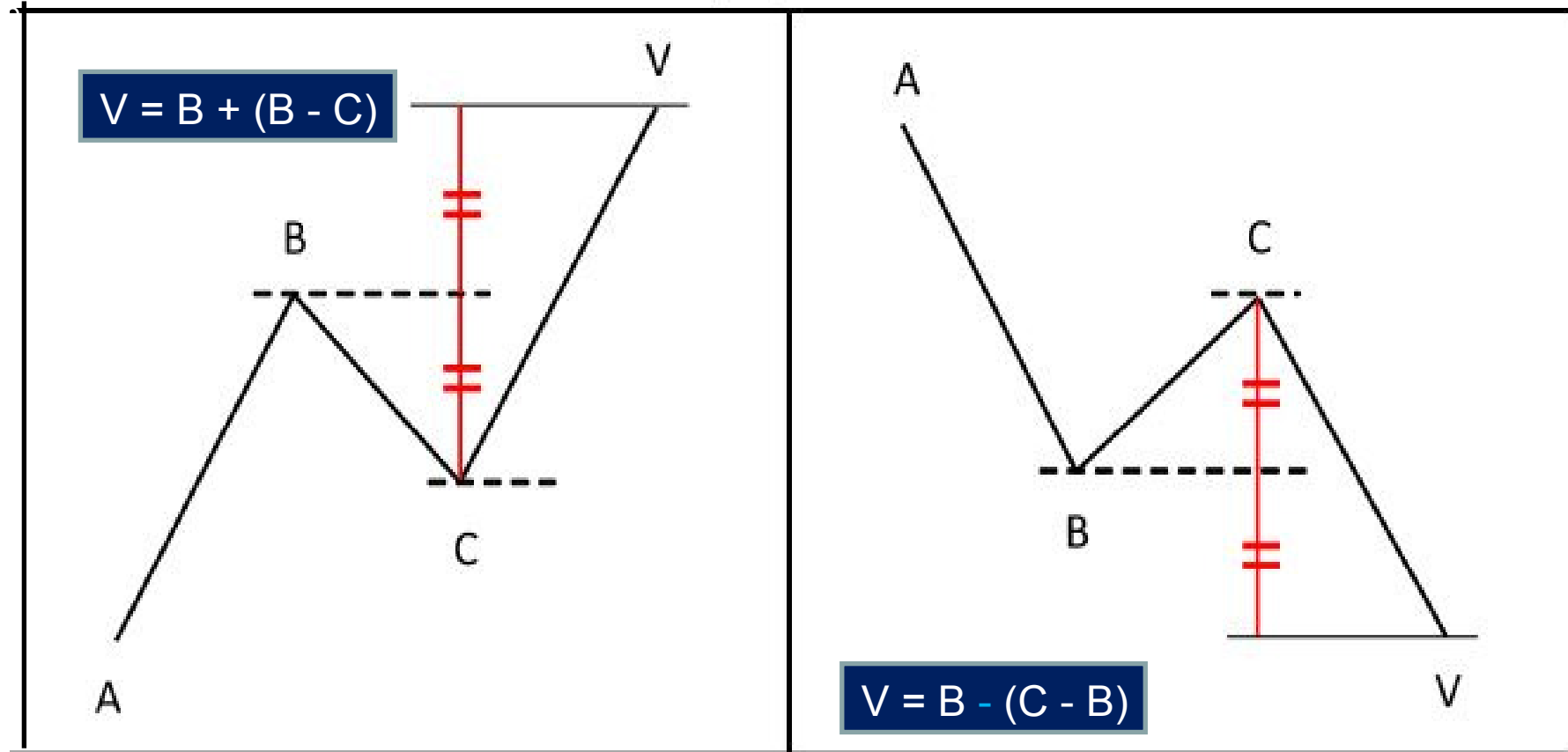


Series of waves

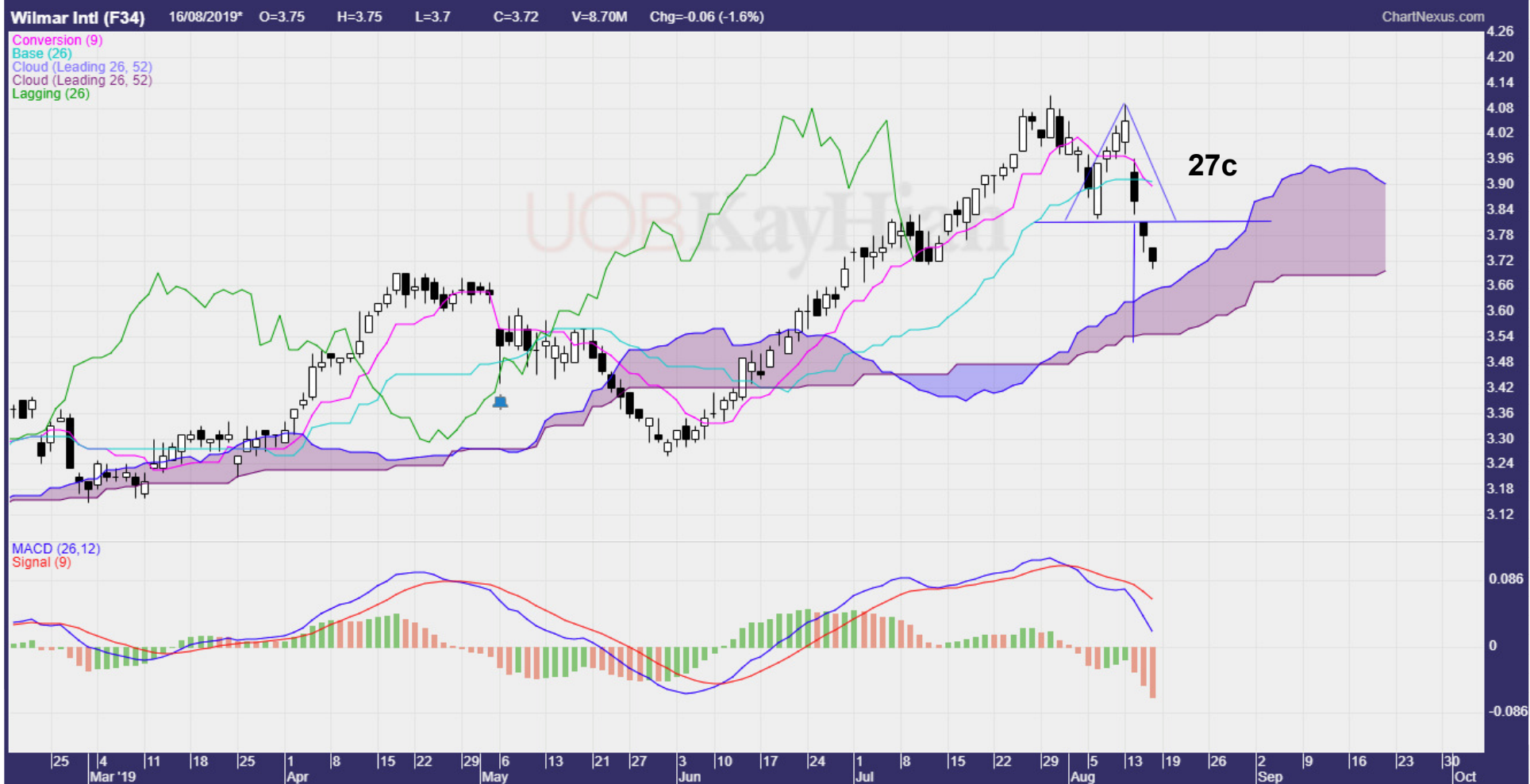


Ichimoku V Price Projection

V projection

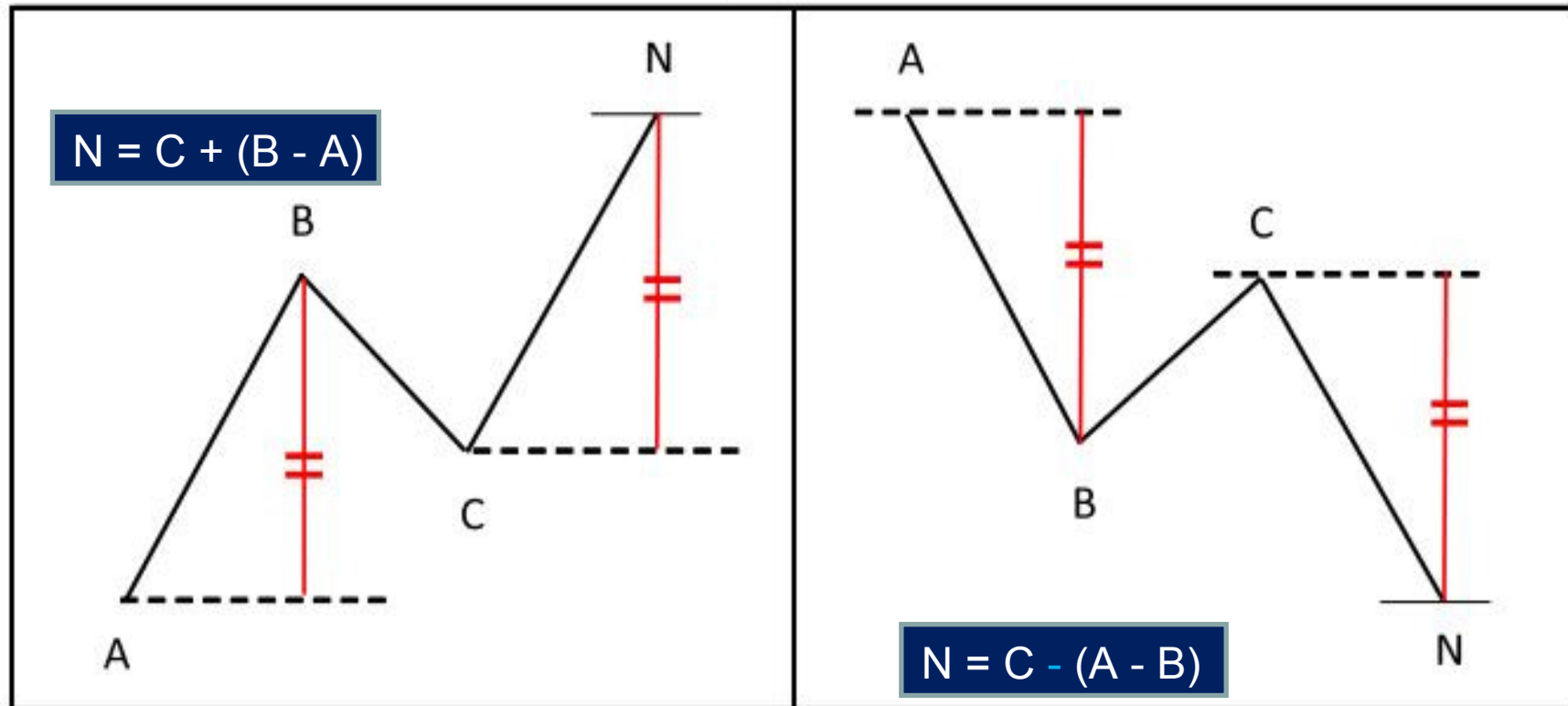


Price Projection V Wave

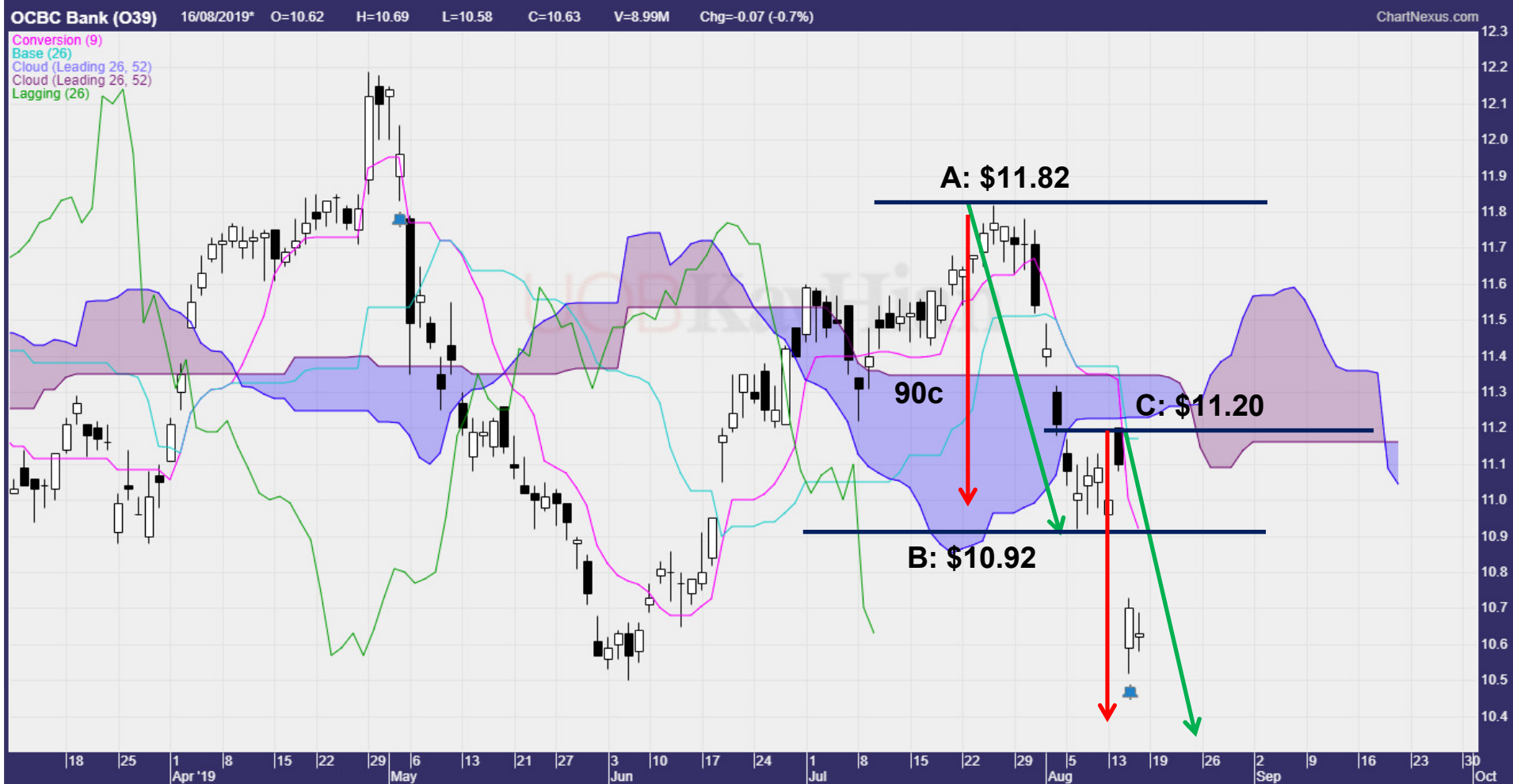


Ichimoku N Projection

N projection

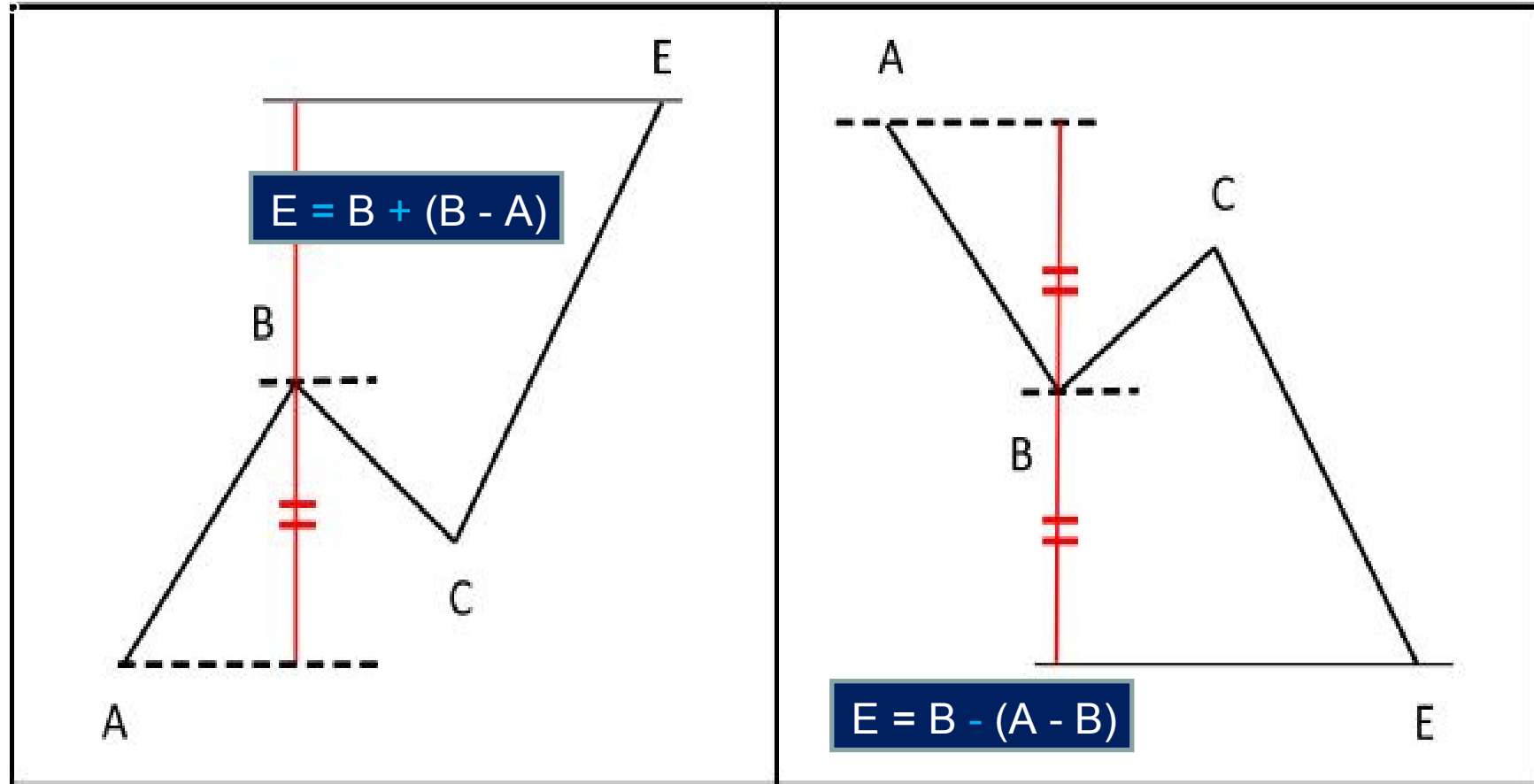


Ichimoku N Projection

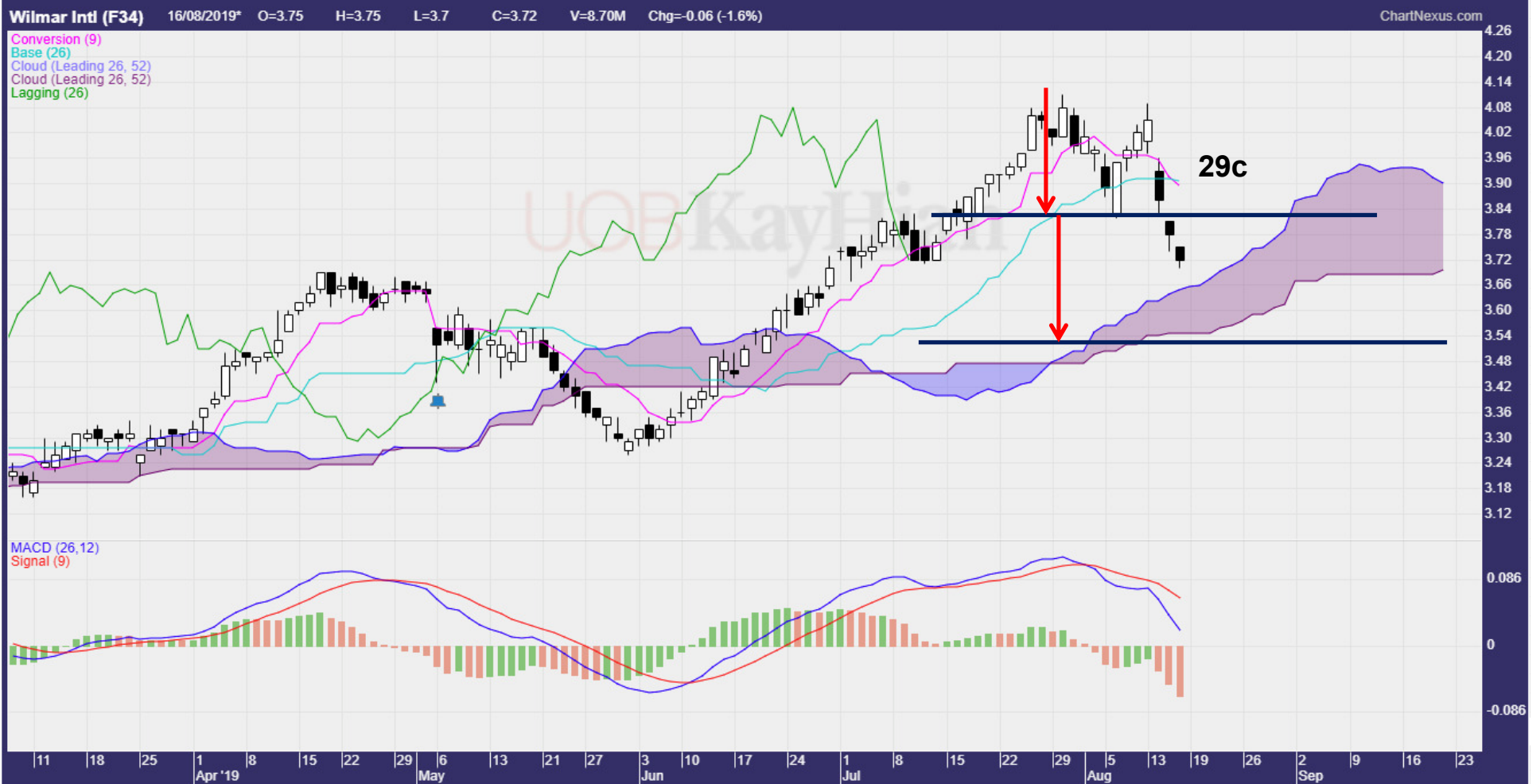


Ichimoku E Price Projection

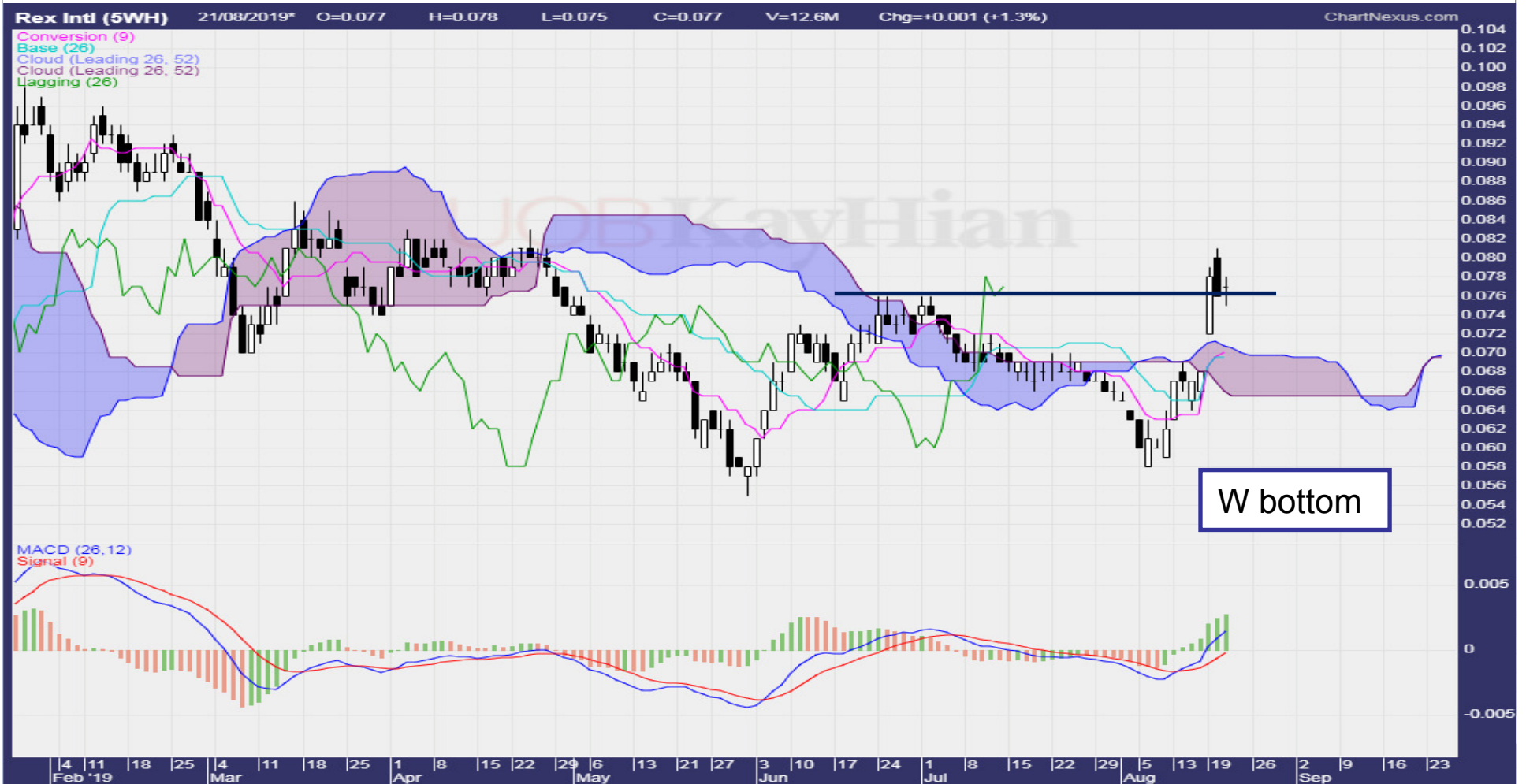
E projection



Ichimoku E Projection



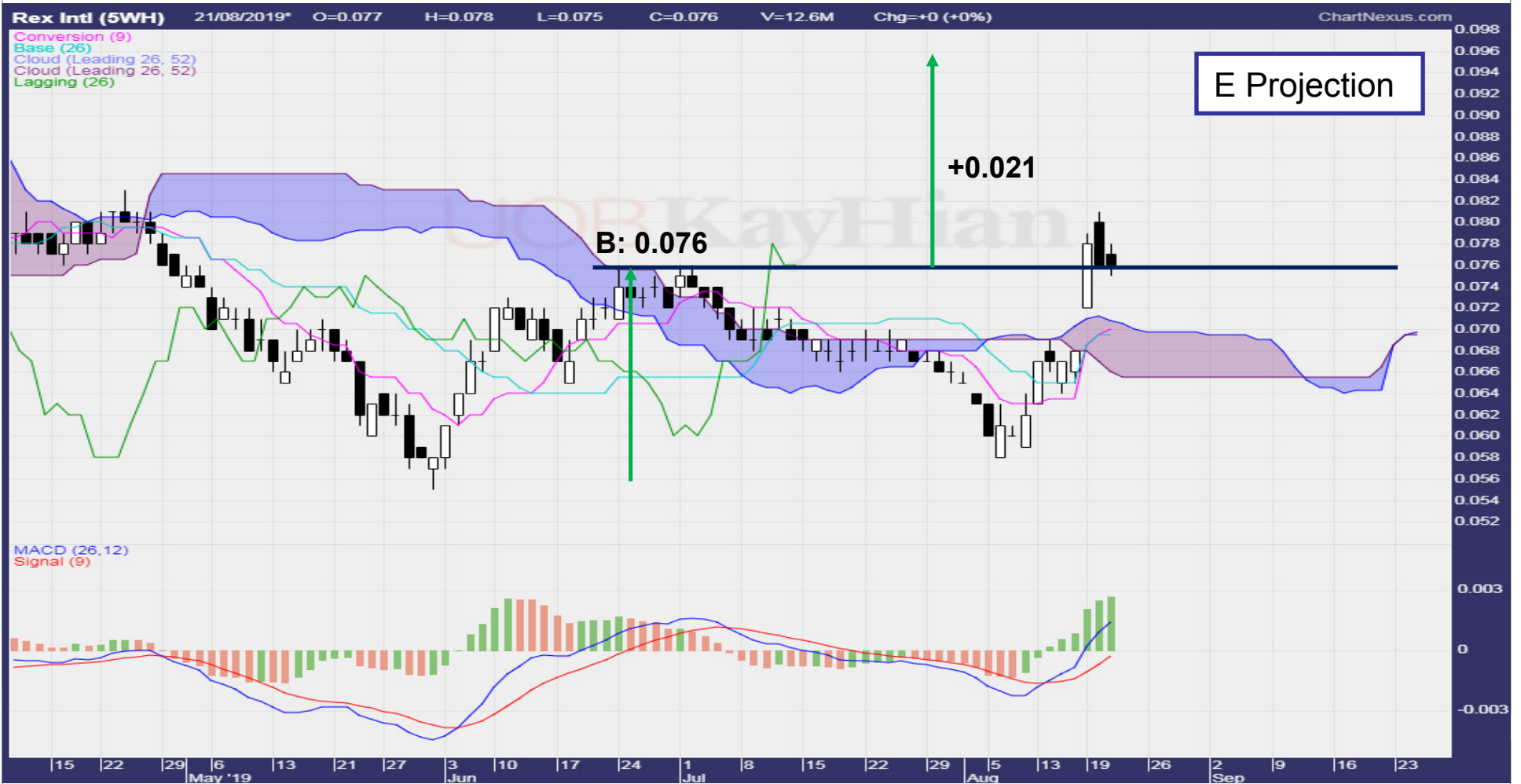
Trading with Ichimoku



Trading with Ichimoku



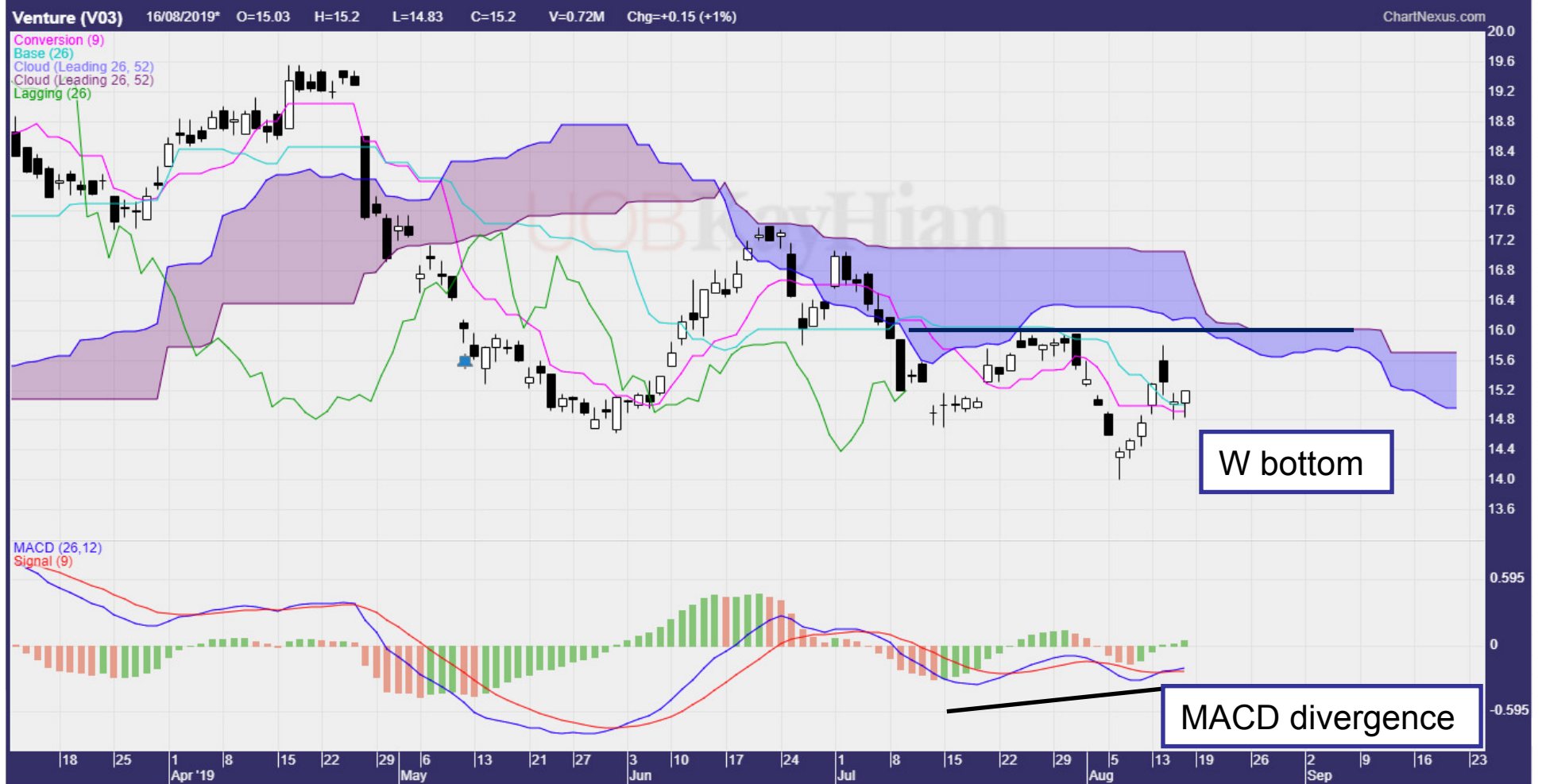
Trading with Ichimoku



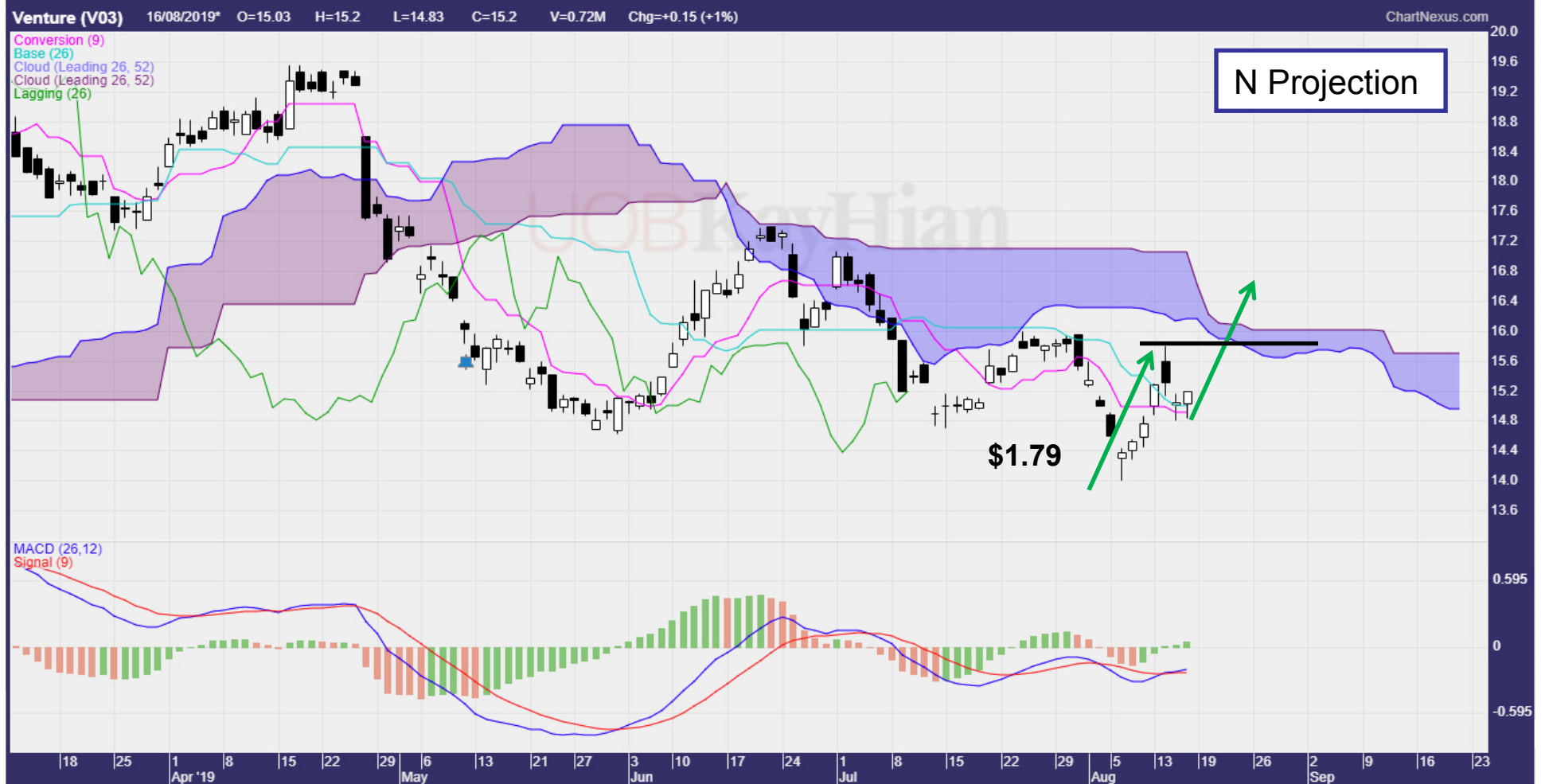
Trading with Ichimoku



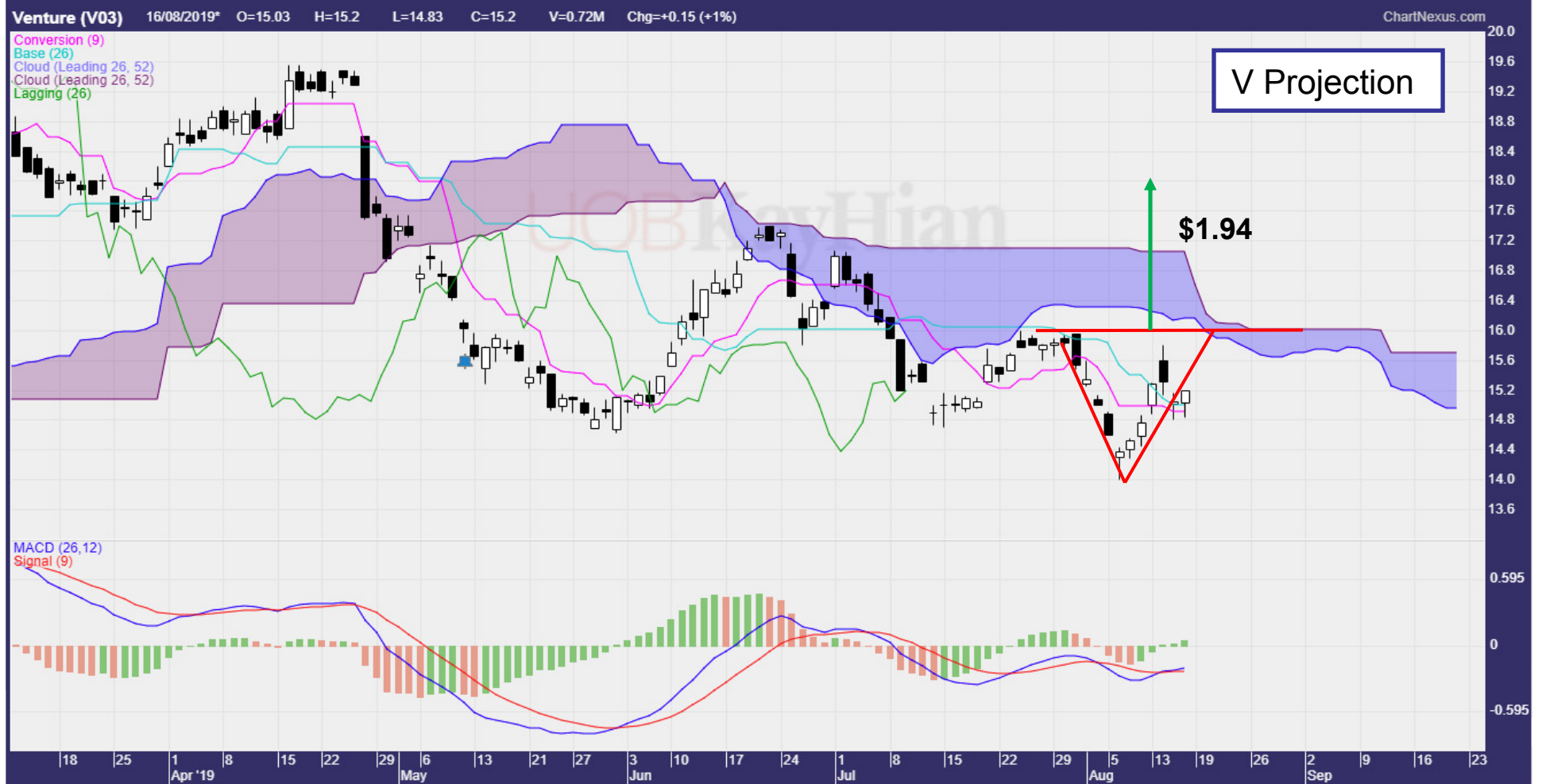
Trading with Ichimoku



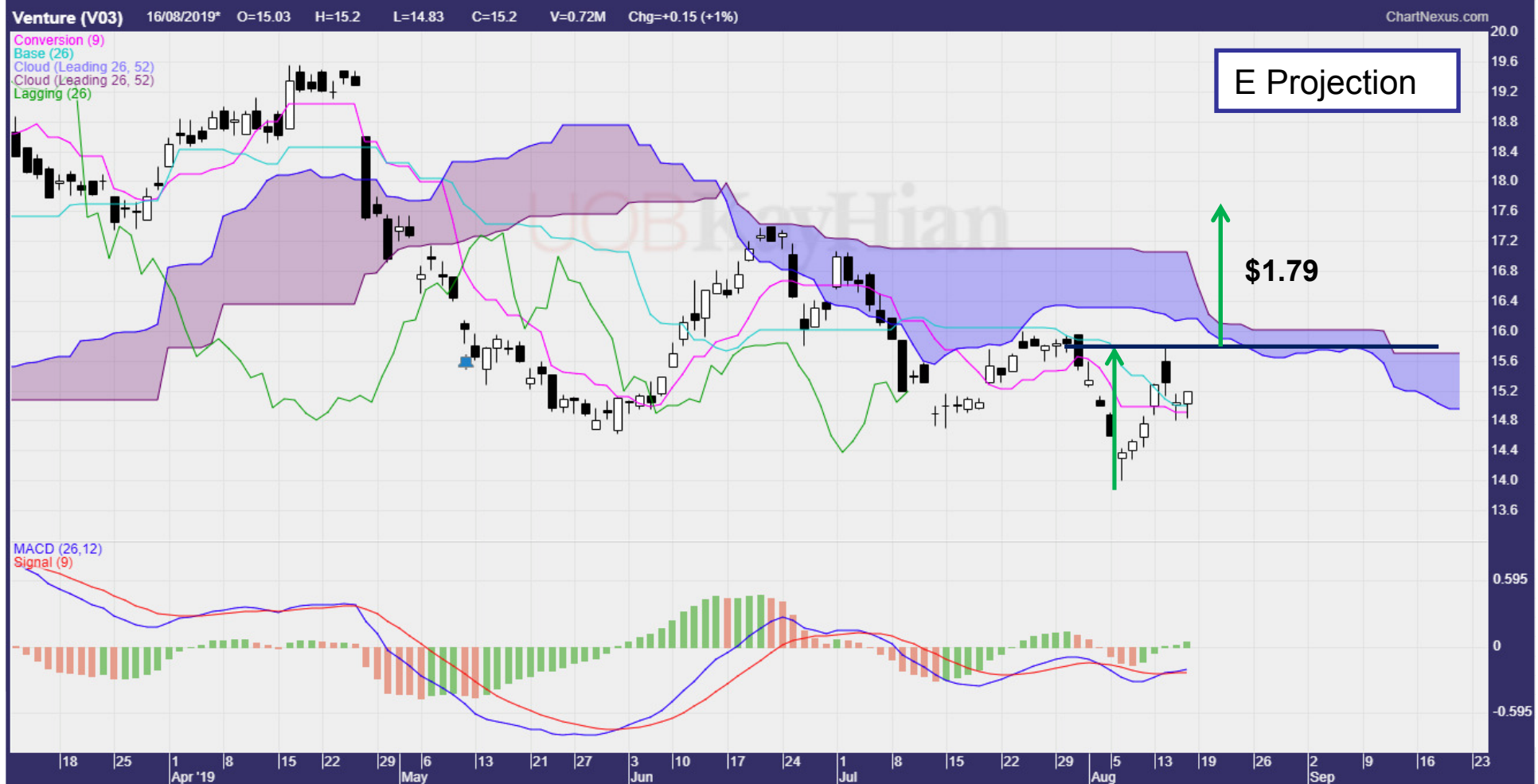
Trading with Ichimoku



Trading with Ichimoku



Trading with Ichimoku



Questions and Answers



Thank you